

OFFICIAL PROGRAM



**CHICAGO
CARDINALS**
VS.
**GREEN BAY
PACKERS**

STATE FAIR PARK

SUNDAY, OCTOBER 10

PRICE **15** CENTS



"The Aristocrat of the Low Price Field"

QUALITY AT LOW COST

YUNKER-HANSEN CO.

Greenfield 6461

7326 W. Greenfield Ave.

The Perfect Food

"VERIFINE ICE CREAM"

Verifine Dairy Products Co.

1130 W. Clarke St.

Phone Locust 5900

**SCHUEPPERT PRINTING
COMPANY**

Printing as YOU like it

214-216 S. Second St.

Phone DAly 0138

MILWAUKEE, WIS.



NATIONAL PROFESSIONAL FOOTBALL LEAGUE SCHEDULE

SUNDAY, OCTOBER 10

Philadelphia at Washington
Green Bay at Chi. Cardinals
(Milwaukee)
Chicago Bears at Cleveland
Pittsburgh at Detroit

SUNDAY, OCTOBER 17

Philadelphia at New York
Pittsburgh at Washington
Chi. Cardinals at Chi. Bears
Green Bay at Cleveland
Brooklyn at Detroit

SUNDAY, OCTOBER 24

Brooklyn at New York
Washington at Philadelphia
Cleveland at Green Bay
Detroit at Chicago Bears
Chicago Cardinals at Pittsburgh

SUNDAY, OCTOBER 31

Green Bay at Detroit
Chicago Bears at New York
Pittsburgh at Philadelphia
Washington at Brooklyn
Cleveland at Chicago Cardinals

SUNDAY, NOVEMBER 7

Pittsburgh at New York
Green Bay at Chicago Bears
Philadelphia at Brooklyn
Cleveland at Detroit

SUNDAY, NOVEMBER 14

Detroit at New York
Brooklyn at Chicago Bears
Washington at Pittsburgh
Philadelphia at Green Bay
(Milwaukee)

SUNDAY, NOVEMBER 21

Brooklyn at Pittsburgh
Green Bay at New York
Detroit at Chicago Cardinals
Washington at Cleveland

THURSDAY, NOVEMBER 25

Chicago Bears at Detroit
New York at Brooklyn

SUNDAY, NOVEMBER 28

Green Bay at Washington
Cleveland at Chicago Bears

SUNDAY, DECEMBER 5

Chi. Bears at Chi. Cardinals
Washington at New York



EARL L. LAMBEAU
COACH

Father of the Packers . . . it was his idea to start with . . . serving his 19th year . . . captain before he was coach . . . played until 1928 . . . and is third on the Packer all-time scoring list . . . 109 points on 12 touchdowns . . . 19 extra points . . . six field goals . . . a great forward passer, he tutored Herber and others in that art . . . played with George Gipp at Notre Dame . . . under the late Knute Rockne . . . longest service record as a National league coach . . . graduate of East high . . . and former East high coach . . . scouts for his own material . . . and seldom picks a lemon . . . everyone calls him "Curley."



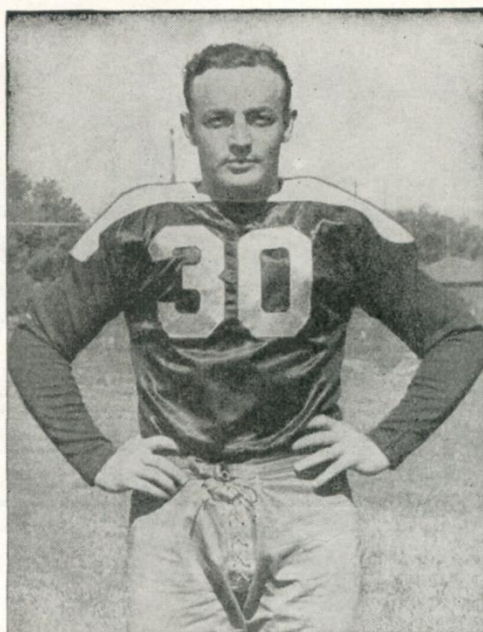
RICHARD SMITH
ASSISTANT COACH

Baseball in the summer and football in the fall . . . second year as Lambeau's helper . . . quick to diagnose the opposition's attack . . . played with the Packer championship team of 1929 . . . also was a Packer in 1927 . . . with the New York Yankees in 1928 . . . starred in the New York Giant forward wall in 1930 and 1931 . . . coached at Seton Hall college for three seasons . . . played with several baseball teams . . . including the New York Giants . . . baseball coach at Georgetown university in 1930 . . . assistant to Dr. C. W. Spears at the University of Wisconsin before coming to Green Bay . . . graduate Kaukauna high school . . . and Notre Dame university . . . had one year of varsity football at Lawrence college before entering South Bend school . . . where he was on the first string for two years . . . managed the Hopkinsville, Ky., farm for the Milwaukee Brewers this year . . . nicknamed "Red" because of his hair . . . married.



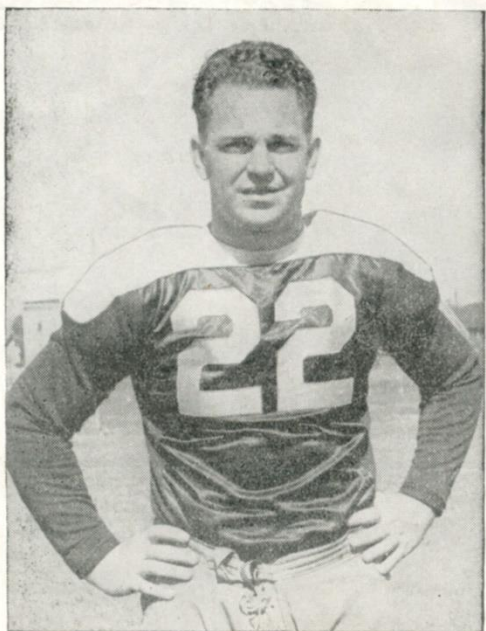
ROBERT MONNETT—Halfback

Even shorter than Paul Miller, he is one of the smallest backs in the league . . . but that does not make him less effective . . . 5 feet 8 $\frac{3}{4}$. . . tips the beam at something over 180 . . . came to the Packers from Michigan State . . . where he starred for three years and captained the team . . . better than average passer . . . salesman in Detroit . . . 26 years old . . . married . . . playing his fifth season with the Packers.



CLARK HINKLE—Fullback

Generally acknowledged as one of the greatest fullbacks in the league . . . a battering ram who always is good for a couple of yards . . . and not infrequently breaks into the clear for lengthy jaunts . . . always a threat . . . outstanding kicker . . . hits unusually hard . . . now in his sixth season with the Packers . . . makes his home in Green Bay . . . sells investments . . . married . . . 26 years old . . . 210 pounds . . . 5 feet 11 . . . Bucknell is his alma mater.



MILTON GANTENBEIN—End

Packer captain . . . plays on the right end of the line . . . few yards are made around him . . . once captain Wisconsin . . . this year is his seventh with the Packers . . . no going is too tough for him . . . about 200 pounds . . . a fraction over 6 feet . . . 27 years old and unmarried . . . ran a cherry camp in Door County last summer . . . sells insurance . . . from La Crosse, but calls Green Bay home.



DON HUTSON—End

A great all-around end, but especially noted as a pass receiver . . . has figured in some sensational plays in which Herber's passing also was a factor . . . came to the Packers from the University of Alabama . . . one of the speediest men on the squad . . . third season . . . plays baseball in the off-season . . . last season with Albany . . . home in Pine Bluff, Ark. . . led the 1935 ends' poll for the College all-star team . . . 190 pounds . . . 6 feet 1 . . . married.

Wisconsin's
Favorite
Dish



Delicious
Refreshing
Healthful

**SUNNYBROOK
BLUE GRASS
WISCONSIN CLUB**

and 383 other
famous brands



Wisconsin Liquor Co.

2560 N. 32nd STREET

Kilbourn 3090

**Milwaukee
Linen Supply Co.**
Rent ——— Why Buy Linen

1716 N. Arlington Place
Marquette 7060

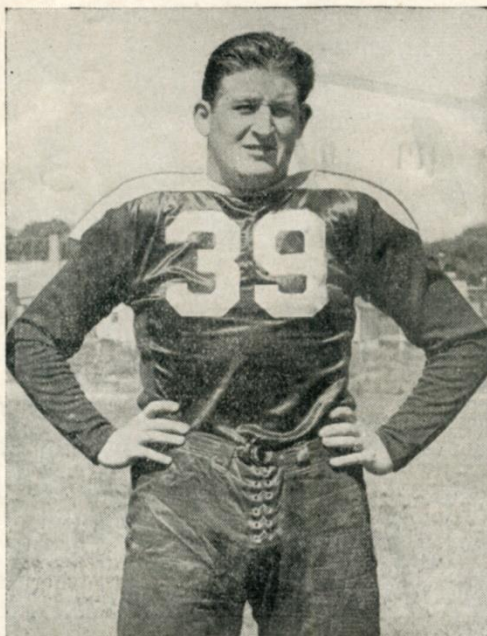
Bayley Blower Company

Manufacturers of

BLOWERS

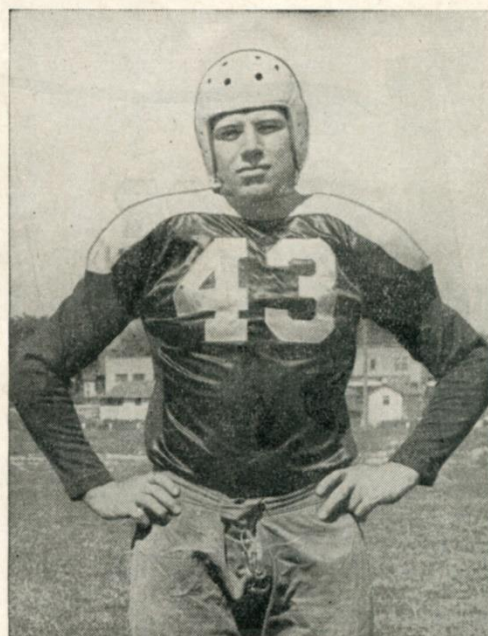
MILWAUKEE, WISCONSIN

Ziegler's *Betty Jane*
Candies



LON EVANS—Guard

Selected on several all-star teams last season . . . one of the smartest guards in the business . . . hails from Texas Christian university . . . this is his fifth season with the Packers . . . strong defensive player . . . soft spoken southerner . . . lives in Fort Worth, Texas . . . married and the father of a daughter . . . 25 years old . . . 6 feet 2 . . . an auditor by trade.



GEORGE SVENDSEN—Center

Had two years of varsity center and tackle at the University of Minnesota before being declared ineligible because of frosh football at Oregon . . . third season with the Packers . . . big and rugged . . . 6 feet 4, and 230 pounds . . . 24 years old . . . married . . . Minneapolis is his home town, but he now operates a filling station in Green Bay . . . great all-around player . . . pass interceptions are his specialty.



FRANCIS SCHAMMEL (ZUD)

Guard

All-America at Iowa . . . rated one of greatest guards in country . . . out of active competition for three seasons, coaching at alma mater . . . back this season as good as ever . . . married . . . weighs 230, 6 feet 1 . . . extremely aggressive, considered excellent pro prospect.



LOUIS J. GORDON—Tackle

Tackle from the University of Illinois championship team of 1927 . . . six years with the Chicago Cardinals . . . one year with Brooklyn before that . . . came to Green Bay last season . . . Man Mountain . . . he stands 6 feet 5 inches in his sweat sox . . . weighs 235 pounds . . . 29 years old . . . home in Chicago where he sells insurance and dabbles in politics . . . he is not married.

...FOR
**Speed!
Thrills!**

**AUTO RACES
AT THE
STATE FAIR**

PRICE
IN GRAND ST

for fine F

PABST



KEGLINED
TRADE MARK AM CAN CO

© 1936, Premier-Pabst Corp.

PABST

TAND **15c**

FLAVOR ask for

TAPaCan



.. delicious Brewery Goodness is sealed in right at the Brewery

While your taking in the State Fair—and the Auto Races—be sure to enjoy the delightful refreshment found only in Pabst TAPaCan . . . When you do—you'll agree there's nothing so delicious, so mellow, so refreshing as Pabst TAPaCan Export Beer or Old Tankard Ale. The brewery goodness, flavor and bouquet for which Pabst has been famous for 92 years is captured right at the brewery, sealed in and kept intact for your personal enjoyment—in the tamperproof, nonrefillable can trademarked Keglined . . . Don't miss this treat in fine flavor—call for—insist on Pabst TAPaCan.

- Brewery Goodness Sealed Right In
- Protected Flavor
- Non-refillable
- Flat Top—It Stacks
- Saves Half the Space
- No Deposits to Pay
- Nothing to Return
- No Breakage

Export **BEER • OLD TANKARD ALE**

Insist on
**PABST
TAPaCan**

GREEN BAY

Packers	3	777	73		34
First Downs					13

No.	NAME	UNIVERSITY	WEIGHT	POSITION
3	Miller	South Dakota State	180	Halfback
4	Schneidman	Iowa	200	Quarterback
5	Monnett	Michigan State	180	Halfback
7	Svendsen, Earl	Minnesota	190	Center
14	Hutson	Alabama	190	End
15	Johnson	Marquette	195	Fullback
16	Scherer	Nebraska	190	End
18	Bruder	Northwestern	203	Quarterback
21	Banet	Manchester (Indiana)	202	Halfback
22	Gantenbein	Wisconsin	200	End
23	Daniell	Pittsburgh	215	Tackle
24	Laws	Iowa	186	Halfback
25	Jankowski	Wisconsin	198	Fullback
26	Sturgeon	North Dakota State	260	Tackle
29	Lester	Texas Christian	210	Center
30	Hinkle	Bucknell	208	Fullback
32	Becker	Marquette	195	End
34	Engelbrechtsen	Northwestern	238	Guard
36	Michalske	Penn State	230	Guard
37	Schammel	Iowa	235	Guard
38	Herber	St. Regis	199	Halfback
39	Evans	Texas Christian	220	Guard
41	Seibold	Wisconsin	245	Tackle
43	Svendsen, George	Minnesota	230	Center
44	Goldenberg	Wisconsin	220	Guard
45	Smith	Southern California	223	Tackle
46	Letlow	San Francisco	212	Guard
47	Gordon	Illinois	240	Tackle

Oct. 24th

Cleveland

AT

GREEN BAY

OFFICIALS

Referee: Ed. Cochrane, Chicago
 Umpire: Robert Karch, Columbus
 Head Linesman: R. J. Erdlitz, Oshkosh
 Field Judge: W. R. Smith, Chicago

Intercept
Passes Comp
Run Comp

1	11	111	1111	9
1	11	11	1111	13

Visitors		7	*	6	13
First Downs	1	111	111	1111	11

CARDINALS

MILAN CREIGHTON, Coach
PHIL HANDLER, Ass't Coach

No.	NAME	UNIVERSITY	WEIGHT	POSITION
8	Lawrence, Jimmy	Texas Christian	185	Halfback
12	Tyler, Pete	Hardin Simmons	190	Halfback
15	Parker, Ray, "Buddy"	Centenary	195	Fullback
16	Reed, Rock	Louisiana State	170	Halfback
17	Nolan, Earl	University of Arizona	205	Tackle
18	Harmon, Ham	Tulsa	220	Center
19	May, Bill	Louisiana State	185	Halfback
20	Coffee, Pat	Louisiana State	185	Halfback
21	Pangle, Hal	Oregon State	200	Fullback
22	Baker, Conway	Centenary	225	Tackle
23	Blazine, Tony	Illinois-Wesleyan	230	Tackle
26	Miller, Milford	Chadron Teachers	220	Tackle
27	Tipton, Howard	Southern California	180	Halfback
28	Carter, Ross	Oregon	200	Guard
30	Morrow, John	Nebraska State Teachers	230	Guard
31	Tinsley, Gaynell	Louisiana State	195	End
32	Grovesnor, George	University of Colorado	175	Halfback
33	Russell, Dougal	Kansas State	190	Halfback
40	Smith, Bill	University of Washington	198	End
42	Wilson, Billy	Gonsaga	185	End
44	Velok, Bill	Tulsa	215	Guard
45	Deskin, Versil	Drake	200	End
46	Dugan, Leonard	Wichita	220	Center
47	Cuppoletti, Bree	Oregon	200	Guard
49	Robinson, Jack	Kirksville Teachers	220	Tackle

Nov.14th

Philadelphia

AT

FAIR PARK



IT'S A

TOUCHDOWN!



SHOP AT A & P — You can depend on our "All-American" lineup of values every day in the year.

Hit that line of values often and you will score on A & P low prices.

A & P FOOD STORES

THE GREAT ATLANTIC & PACIFIC TEA CO.

Milk — Cream and Chocolate Drink

Served by ***Luick***

Phone Marquette 1881

"The Finest in Dairy Products"

More people are enjoying old fashioned

CRISPY SUGAR CONES

Manufactured by

Washington Sugar Cone Co.

MILWAUKEE, WIS.

MARKS BROS. Dye Works, Inc.

OUR NAME IS YOUR PROTECTION

We Call and Deliver

1107-1113 W. WELLS ST. Phone Marquette 0555

ENTERTAINMENT

DANCING

GREEN BAY AND MILWAUKEE
PACKER FANS

*After the Game be sure and visit Milwaukee's
Newest and Best Nite Spot*

JOS. A. BUDAR

634 N. 5th ST. Opposite Hotel Schroeder

THE LONDON HAT SHOP & SHOE REPAIRING CO.

Expert Hat Cleaners & Shoe Repairers
General Dry Cleaners of Ladies
& Men's Wearing Apparel

Cleaners for the more particular

226 E. Wisconsin

Phone DAly 4153

711 N. Broadway

Milwaukee

For Lumber, Coal and Fuel Oil

CALL

NORTH SIDE LUMBER & FUEL CO.

A Friendly Place to Buy

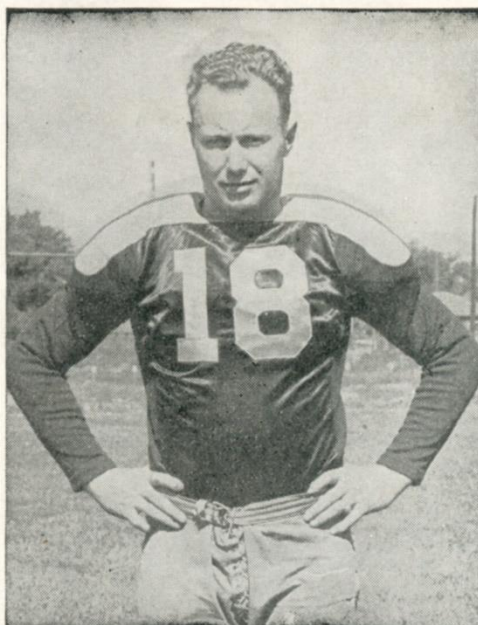
EDgewood 0400

BLuemound 7900



ARNOLD HERBER—Halfback
(Now No. 38)

Ace of the forward passers . . . a veteran at 27 . . . this is his seventh season . . . home town boy . . . one-time West high captain . . . then captained the Wisconsin University freshmen . . . played varsity ball at Regis College . . . has been honored many times . . . dubbed "Flash" in the east . . . now lives in De Pere . . . engaged in the soft drink business . . . just over 6 feet, and a few pounds over 200 . . . married . . . one child.



HENRY BRUDER—Quarterback

One of the most capable backs on the squad . . . plays any position behind the line . . . but is used principally as a blocker . . . a member of the Packers since 1931 . . . known at Northwestern as "Hard Luck Hank" . . . because of a jinx that followed him through three varsity years . . . has had better luck with the pros . . . operates a tire shop in Green Bay . . . 6 feet tall . . . and throws 197 pounds at the opposition . . . 30 years old . . . married . . . has one son.



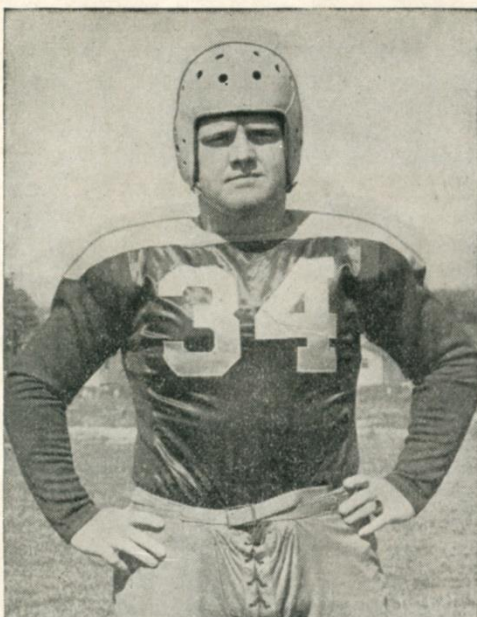
WAYLAND BECKER—End

Played in his third game against the College All-Stars this year . . . is a Green Bay up from the ranks at East high school . . . three years varsity at Marquette university where he was one of Frank Murray's outstanding ends . . . property of the Chicago Bears after college, but spent most of his time for two seasons with the Brooklyn Dodgers . . . came home to the Packers in a trade last year . . . 6 feet tall, he weighs 195 pounds . . . he is 26 years old . . . and married.



EDDIE JANKOWSKI—Fullback

Regarded as the nation's best professional football prospect of the 1936 crop . . . starred on mediocre Wisconsin teams, brilliantly with the All-Stars against the Packers . . . weighs 210, extremely rugged and tough . . . product of Milwaukee high school.



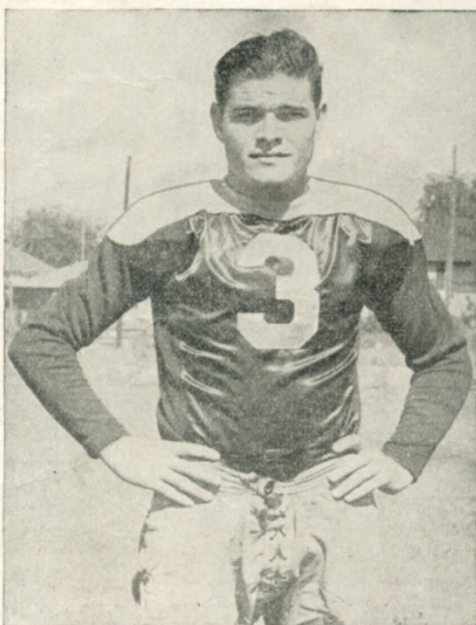
PAUL ENGBRETSEN—Guard

Known to his teammates as "Tiny" . . . weighs 240 pounds . . . stands 6 feet 1 . . . an outstanding guard . . . and one of the Packers' most dependable field goal kickers . . . has been around the circuit . . . started his pro career with the Chicago Bears . . . then went to Brooklyn . . . came to Green Bay midway in the 1934 season . . . this is his sixth season since leaving the Northwestern University campus . . . home in Chariton, Iowa . . . but spends most of his time in Green Bay . . . 27 years old . . . unmarried.



JOE LAWS—Halfback

Calls the signals . . . voted most valuable in the Big Ten in 1933 . . . three years varsity at the University of Iowa . . . left handed passer . . . also kicks from the port side . . . elusive runner . . . hustles punts back . . . weighs 185 . . . is 5 feet 9 . . . farms near Colfax, Iowa . . . 26 years old . . . married . . . this is his fourth season with the Packers.



PAUL MILLER—Halfback

One of the fastest men ever to wear a Packer uniform . . . and at 180 pounds one of the lightest of the present corps . . . hails from South Dakota State . . . where he made 19 touchdowns in one season . . . and captained the team . . . plays left halfback . . . this is his second year with the Packers . . . home in Platte, S. D. . . single . . . 23 years of age . . . printer.



ERNIE SMITH—Tackle

Blocks punts with the greatest of ease . . . All-America selection from the University of Southern California . . . resident of Los Angeles . . . third year in the National Professional league . . . all of them with the Packers . . . place kicker . . . played with many all-star combinations before that . . . handles his 234 pounds in an aggressive fashion . . . 6 feet 2 . . . 27 years old . . . married . . . sells insurance trusts.

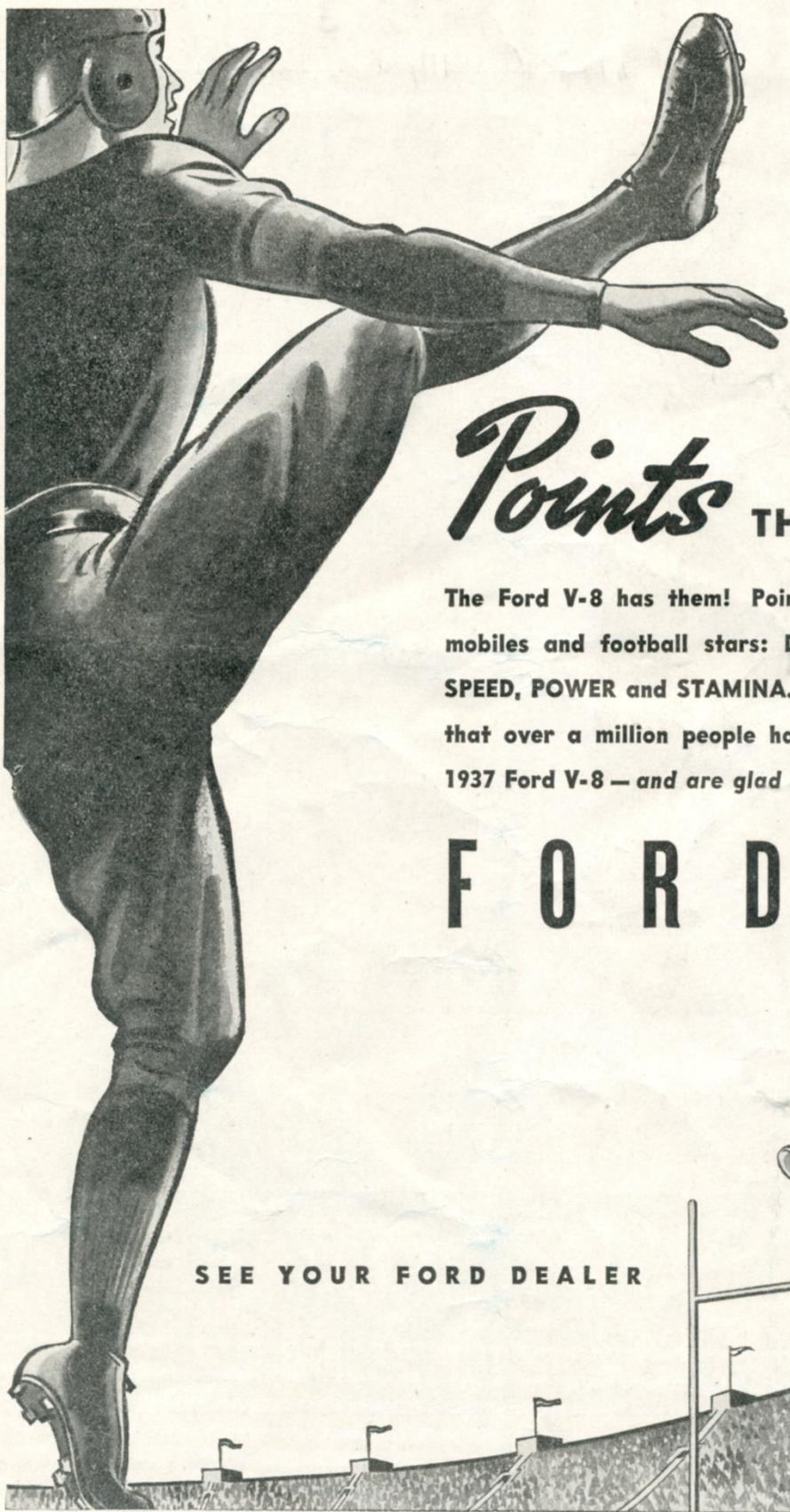
**CURTIS
CANDIES**



a Hit at any Event!

Baby Ruth
and
Butterfinger

**ON SALE HERE
AT ALL STANDS**



Points THAT COUNT!

The Ford V-8 has them! Points that count in automobiles and football stars: **DEPENDABILITY, STYLE, SPEED, POWER** and **STAMINA**. Thus it's not surprising that over a million people have already bought the 1937 Ford V-8 — *and are glad they did!*

F O R D V · 8

SEE YOUR FORD DEALER