

EAGLES ★ GIANTS

NOVEMBER 3rd
1946

SHIBE PARK



OFFICIAL 25¢ PROGRAM

Larry Tisdale

WHAT THE SIGNALS MEAN



Holding. (Penalty—by offense, 15 yards; by defense, 5 yards.)



Offside or violation of kick-off formation. (Penalty, 5 yards.)



Illegal forward pass. (Penalty 5 yards.)



Crawling, 5 yards; helping ball carrier, 15 yds.



Score—touchdown, field goal, or conversion.



Unnecessary clipping, kicker. (Penalty, 15 yards and possible loss of down.)



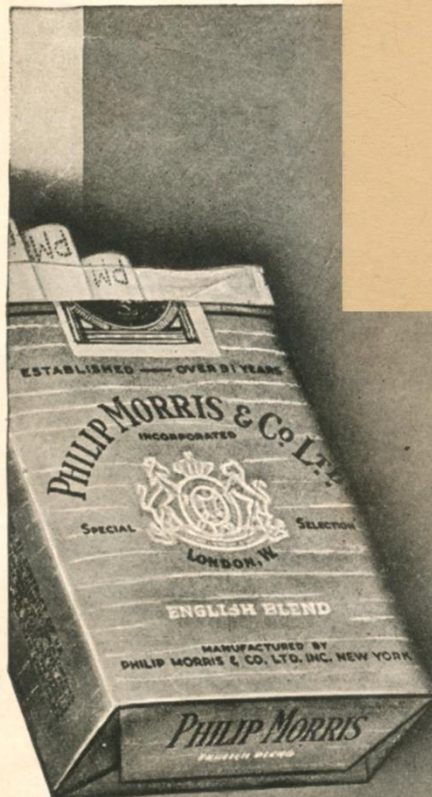
Interference with forward pass. (If penalty on offense, 15 yards and loss of down. Interference by defense, ball to offense on spot of foul as first down.)



Penalty refused, incomplete pass, missed field goal or conversion.

PLEASE COMPLETE AND
RETURN THIS CARD.

NO POSTAGE IS
REQUIRED.



BY EMINENT MEDICAL AUTHORITIES:

This finer-tasting cigarette is also far more considerate of your nose and throat... scientifically proved far less irritating to the smoker's nose and throat! So—

CALL FOR **PHILIP MORRIS**

America's *FINEST* Cigarette

WHAT THE SIGNALS MEAN



Holding. (Penalty—by offense, 15 yards; by defense, 5 yards.)



Offside or violation of kick-off formation. (Penalty, 5 yards.)



Illegal forward pass. (Penalty 5 yards.)



Crawling, 5 yards; helping ball carrier, 15 yds.



Score—touchdown, field goal, or conversion.



Unnecessary roughness, clipping, or roughing the kicker. (Penalty, 15 yards and possible disqualification.) Running into kicker. (Penalty, 5 yards.)



Player illegally in motion from shift or huddle. (Penalty, 5 yards.)



Penalty refused, incomplete pass, missed field goal or conversion, both sides offside, etc.



Interference with forward pass. (If penalty on offense, 15 yards and loss of down. Interference by defense, ball to offense on spot of foul as first down.)



Safety.

Extra time-outs. (Penalty, 5 yds.) Delay of game. (Penalty 15 yds.)



Time out.



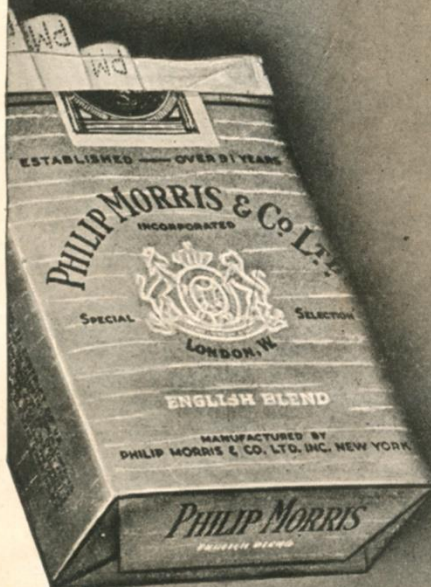
PHILIP MORRIS' SUPERIORITY RECOGNIZED

BY EMINENT MEDICAL AUTHORITIES!

This finer-tasting cigarette is also far more considerate of your nose and throat... scientifically proved far less irritating to the smoker's nose and throat! So—

CALL FOR **PHILIP MORRIS**

America's *FINEST* Cigarette

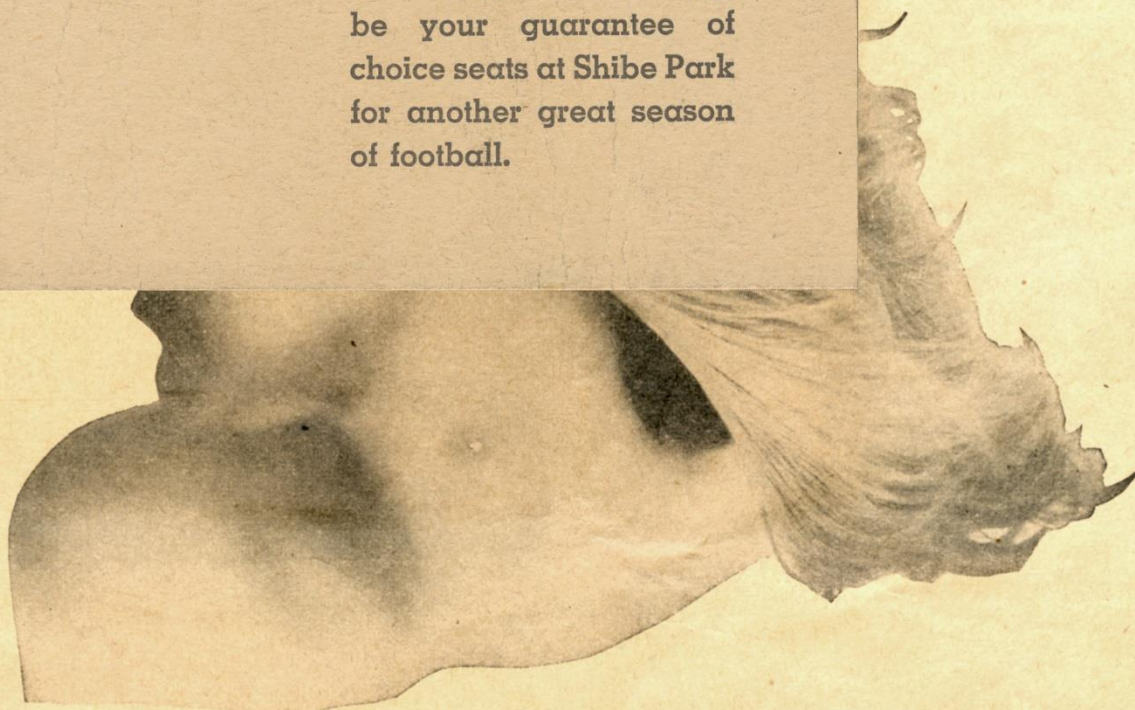




Breathless by Charbert

RESERVE your season tickets for the 1947 Eagles' home games now.

Return the card which you will find inside the back cover and this will be your guarantee of choice seats at Shibe Park for another great season of football.



Perfume that spins a moment into a memory



Breathless by Charbert



Perfume that spins a moment into a memory

Three Cheers FOR THAT SUNNY MORNING FLAVOR!

*You'll stand and cheer each time you savor
this whiskey's Sunny Morning Flavor!*



SCHENLEY

RESERVE

Blended Whiskey 86 proof. 65% grain neutral spirits. Copr. 1946, Schenley Distillers Corp., N. Y. C.



EAGLES GRID REVIEW

Official Publication of the Philadelphia Eagles. Published for, and on sale at, all home games.

PHILADELPHIA EAGLES

Alexis Thompson President
Harry M. Thayer... Vice Pres. and Gen. Mgr.
Al Ennis Publicity Director
Don Hall Program Manager

A. Earle Neale Head Coach
John Kellison Assistant Coach
Charlie Ewart Backfield Coach
Fred Schubach Trainer

TODAY'S GAME

Today, Coach Neale forgets that Steve Owen is a personal friend and instructs his flashy Eagles to go to work on the Giant.

Owen will not field the same type team as last year, and will introduce to Philadelphians eleven new Giants. Eleven men that have added much power and resourcefulness to his 1946 team.

The 33-player roster is composed of thirteen holdovers from 1945, eleven first-year players and nine veteran Giants back from war service.

Among the newcomers are three standouts. They are Frank Filchock, Sammy Baugh's shadow for six years with the Redskins, and a pair of all-America tackles, Dewitt Coulter,

West Point's 1945 famed performer, and Jim White, Notre Dame's 1943 line ace.

Filchock has added great aerial strength to the Polo Ground's Club, surprising running ability and natural leadership calling plays. He has made good his ambition to be No. 1 player on a big pro club. Frank holds his new mates in high esteem. All the Giants reciprocate that feeling.

Steve Owen was fortunate indeed to come up with two rookie all-American tackles. Coulter and White, big, strong and fast, brought strength where it was most needed.

Yes, a new Giant comes to Philadelphia today. Tea will be served during time-out.

You Can Win Two FREE TICKETS

Three pairs of tickets for the next Eagles' home games are given away at half time to the holders of lucky number programs.

To Our Next Home Game!

LUCKY NUMBER PROGRAM

See Esslinger's Adv. on Inside Back Cover

Representatives for National Advertising: Don Spencer Company, Inc., 271 Madison Avenue, New York 16, N. Y.

"Home of the Eagles"

★ ★ ★

COFFEE SHOP

Penguin

Cocktail Lounge

★ ★ ★

600 ROOMS :: 600 BATHS

Each with Radio

from \$3.00

DANIEL CRAWFORD, Jr., Pres. and Gen. Mgr.

★ ★ ★

HOTEL PHILADELPHIAN

39th and Chestnut Streets

Unrestricted Day and Evening Parking

★ ★ ★

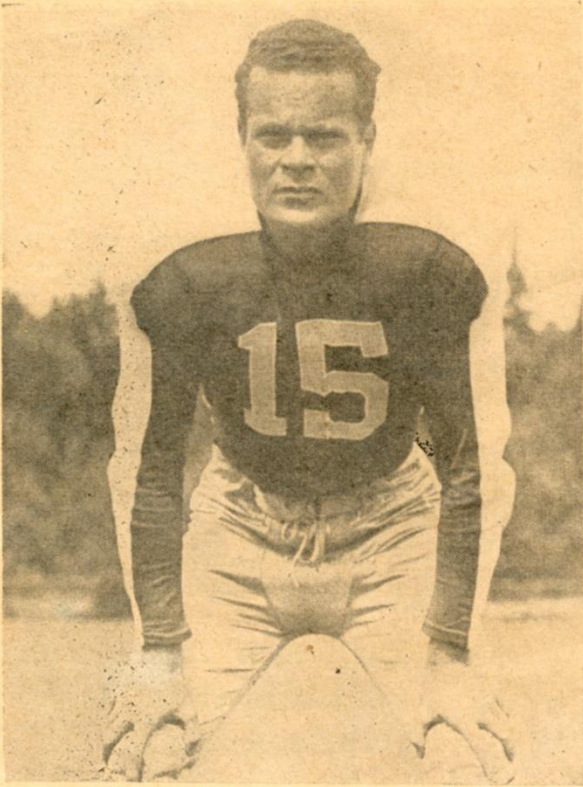
Buy Victory Bonds

National Football League Schedule for 1946

Date	Clubs	Scores
Sept. 20	Cards at Pittsburgh (Night)	7-14
Sept. 29	Chicago Bears at Green Bay	30- 7
" "	Philadelphia at Los Angeles	25-14
" "	Pittsburgh at Washington	14-14
Sept. 30	New York at Boston (Night)	17- 0
" "	Detroit at Chicago Cards (Night)	14-34
Oct. 6	Boston at Philadelphia	25-49
" "	Chicago Bears at Chicago Cardinals	34-17
" "	Detroit at Washington	16-17
" "	Los Angeles vs. Green Bay at Milwaukee	21-17
" "	New York at Pittsburgh	17-14
Oct. 13	Chicago Cardinals at Detroit	36-14
" "	Green Bay at Philadelphia	19- 7
" "	Los Angeles at Chicago Bears	28-28
" "	New York at Washington	14-24
" "	Pittsburgh at Boston	16- 7
Oct. 20	Chicago Cardinals at New York	24-28
" "	Detroit at Los Angeles	14-35
" "	Philadelphia at Chicago Bears	14-21
" "	Pittsburgh at Green Bay	7-17
" "	Washington at Boston	14- 6
Oct. 27	Boston at Pittsburgh	7-33
" "	Chicago Bears at New York	0-14
" "	Detroit vs. Green Bay at Milwaukee	7-10
" "	Los Angeles at Chicago Cardinals	10-34
" "	Philadelphia at Washington	28-24
Nov. 3	Chicago Cardinals at Boston	
" "	Green Bay at Chicago Bears	
" "	Los Angeles at Detroit	
" "	New York at Philadelphia	
" "	Washington at Pittsburgh	
Nov. 10	Boston at Washington	
" "	Chicago Bears at Los Angeles	
" "	Green Bay at Chicago Cardinals	
" "	Philadelphia at New York	
" "	Pittsburgh at Detroit	
Nov. 17	Boston at New York	
" "	Chicago Cardinals at Los Angeles	
" "	Green Bay at Detroit	
" "	Philadelphia at Pittsburgh	
" "	Washington at Chicago Bears	
Nov. 24	Chicago Cardinals at Green Bay	
" "	Detroit at Chicago Bears	
" "	Los Angeles at Boston	
" "	Pittsburgh at New York	
" "	Washington at Philadelphia	
Nov. 28	Boston at Detroit (Thanksgiving morning)	
Dec. 1	Chicago Cardinals at Chicago Bears	
" "	Green Bay at Washington	
" "	Los Angeles at New York	
" "	Pittsburgh at Philadelphia	
Dec. 8	Chicago Bears at Detroit	
" "	Green Bay at Los Angeles	
" "	Philadelphia at Boston	
" "	Washington at New York	

• World Championship in home park of Eastern Division winner on December 15.

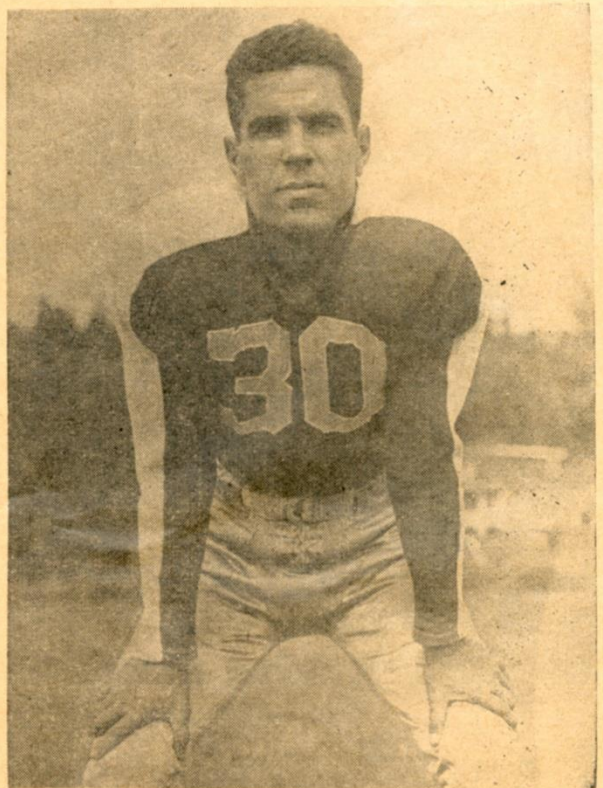
Eagle Halfbacks



STEVE VAN BUREN

STEVE VAN BUREN, the Eagles' first draft choice for the 1944 season, has more than justified the high opinion held of him by the Philadelphia coaches. In his first year (1944) he finished fifth among the league's ball carriers, with 444 yards in 80 attempts for a 5.5 yards average. Last season he almost doubled this performance when he picked up 832 yards in 143 attempts and a norm of 5.8 yards. He scored 5 touchdowns in 1944 and 18 in 1945, the last performance establishing a new league record for touchdowns scored in a season (formerly held by Don Hutson when he scored 17 in 1942). The Boy from the Bayous also led the league in number of touchdowns running (16); he paced the field of punt returners with 4 returned for 154 yards; and led the kickoff returners with 13 brought back for 373 yards. In two years Van Buren has carried the ball 223 times for 1276 yards and a 5.6 yards average, has scored 21 touchdowns and has kicked 2 extra points to give him a total point score of 152.

BOSH PRITCHARD, member of the Eagles' backfield in 1942, enlisted in the Navy at the close of the season, and was discharged last June. . . . While on naval duty at San Diego last season, he played with the San Diego Bombers of the Pacific Coast League, and led that circuit in forward passing, being the only Bomber to make the All-League team. . . . He is quite a crooner, having had his own 15-minute radio program on a San Diego radio station for the past six months. . . . In addition to running the opposition ragged, Bosh entertains the crowd between halves by crooning into a field microphone.



BOSH PRITCHARD

Backfield Coach — Charlie Ewart



CHARLIE EWART

Began his football career as a center on the undefeated Connecticut State Championship Hillhouse High School (New Haven) team in 1931, but upon entering The Hopkins School (New Haven) the following year, his coach converted him into a quarterback.

He entered Yale University in 1934, and called the signals on the freshman eleven. He was varsity quarterback at Yale in 1935, 1936 and 1937, when Greasy Neale was backfield coach under "Ducky" Pond. He also played on the freshman basketball team in 1934 and 1935.

He played the No. 1 or wingback during his career at Yale. Neale says of him, "Although he weighed only 170 pounds, he was a great blocker, not only on the opposing tackles, but

on the backers-up, who usually outweighed him by 30 pounds. He was a smart, heady player, with a natural football instinct, and proved himself a great field general."

He quarterbacked a Yale team to victory over Pennsylvania at Franklin Field, Philadelphia, in 1935, after it appeared that Yale was hopelessly beaten. Pennsylvania led 20-6 at the half. Spurred on by Ewart's brilliant quarterbacking, the Yale team got rolling in the second half, and Ewart's 74-yard pass to Larry Kelly put the Elis in front, from where they went on to win by a 31-20 final score.

After graduating in 1938, Ewart remained at Yale for two years, to receive his Master of Arts degree, majoring in American History.

In 1938, 1939 and 1940, he was a member of the football coaching staff at Wesleyan University at Middletown, Connecticut, officiating as backfield and kicking coach under Jack Blott, former University of Michigan All-American and present Michigan line coach. In 1941 he served as backfield coach at Dartmouth under "Tuss" McLaughry.

During the war he was connected with the Federal Bureau of Investigation, being appointed a Special Agent on February 23, 1942. Assigned to the Buffalo, N. Y., Field Division in May, 1942, he remained there until October of that year, when he was transferred to the Newark, N. J., Field Division, where he was stationed when his resignation from the F.B.I. became effective on July 19, 1946.

Married and the father of a five months' old son, Ewart has been living in East Orange, N. J., but plans to move to Philadelphia.

Jack Ferrante



Ben Kish

PABST BLUE RIBBON BEER :- VAN MERRIT BEER
CARLINGS RED CAP ALE

7

Two Great Eagles



ROY ZIMMERMAN

ROY ZIMMERMAN has been a potent factor in the Eagles' surge to the top in recent years. In three seasons with the club he has passed for 2622 yards and 26 touchdowns, has place-kicked 87 extra points out of 95 attempts, and has booted 9 field goals. Against Boston in 1944 (October 22nd) he threw a 75-yard touchdown pass to Mel Bleeker, and against the Cleveland Rams last season (October 28th) he fired one for 74 yards into the arms of Jack Ferrante for a score. Last season he led the league in pass interceptions, grabbing seven enemy tosses, and returning them for 90 yards.

JACK FERRANTE is a product of the Philadelphia sandlots who has made good in the big league without benefit of college coaching. . . . Greasy Neal calls him "the most improved player in the league." . . . Last season he caught 21 passes for 474 yards and seven touchdowns, and collaborated with Roy Zimmerman on the season's longest touchdown pass (74 yards) against the Cleveland Rams. . . . Married and the father of two children, he lives in Upper Darby, Pa.



JACK FERRANTE

Visit The . . .

EAGLES' GRIDIRON BAR

IN THE

SPRINGFIELD HOTEL

(Flourtown on the Bethlehem Pike — Route 309)

NEW OWNERS
VIC SEARS **TOMMY THOMPSON**
ED HAGENBUCHER

DANCING EVERY EVENING TO HAL PFAFFS' ORCHESTRA
 KITCHEN UNDER DIRECTION OF ARMOND SCHMIDT
 DINING ROOM OPEN SUNDAYS

For Reservations Call
 WALTER McCULLA — WHITEMARSH 8-9821



PHILADELPHIA
 ★ 1224 MARKET STREET
 ★ 2254 NORTH FRONT ST.
 Other Stores in Camden and Wilmington
 ★ Also Lady Douglas Shoes at Moderate Prices



"Hmml The coach says some very nice things about you, Johnson!"

Thumbnail Sketches of Philadelphia Eagles

LARRY CABRELLI is starting his sixth season with the Eagles and his fourth as team captain . . .

Played varsity football and basketball at Colgate before coming to the Eagles in 1941. . . . Called by Coach Gus Dorais of the Detroit Lions "the best defensive end in pro football." . . . Born in Newark, N. J., but moved to Philadelphia five years ago.

Married and the father of an infant son, Lawrence Andrew, Jr.

JIM CASTIGLIA, one of Georgetown's great fullbacks, was drafted by the Eagles for the 1941 season, and played with them that year, then enlisted in the army, and rose to the rank of captain. . . . He was discharged late last fall and returned to the team, but too late to regain his pre-war form. . . . A stocky, powerful line plunger, Big Jim can always be depended upon to gain those precious two or three yards.

OTIS DOUGLAS, at an age when most athletes are thinking of carpet slippers and an easy chair, is making a determined bid for fame in pro football, and is already battling Vic Sears and Al Wistert, two All-League tackles, for a starting berth. . . . Recommended by Line Coach John Kellison, for whom he played at William & Mary in 1931, 1932 and 1933. . . . He captained the football and wrestling teams there. . . . His father played at W & M in 1896, and his two brothers followed him there. . . . After graduation, spent eleven years as a college coach, and was Director of Athletics at Akron University. Served three years as an army lieutenant. . . . Holds a commercial pilot's license and flies his own airplane.

JACK FERRANTE is a product of the Philadelphia sandlots who has made good in the big league without benefit of college coaching. . . . Greasy Neale calls him "the most improved player in the league." . . . Last season he caught 21 passes for 474 yards and seven touchdowns, and colliatorated with Roy Zimmerman on the season's longest touchdown pass (74 yards) against the Cleveland Rams. . . . Married and the father of two children, he lives in Upper Darby, Pa.

RAY GRAVES, who played with the team in 1942 and 1943, returns this year after a two year absence coaching the line of his Alma Mater, the University of Tennessee. . . . During the off season, he acts as a player scout for the Eagles in the South and Southwest. . . . Is married and the father of a two and a half-year-old daughter. . . . Home, Knoxville, Tennessee.

JACK HINKLE made his first appearance with the Eagles in Washington on December 7th, 1941, the day Pearl Harbor was bombed, immediately enlisted in the Army Air Force, from which he later received a medical discharge. . . . Before joining the Eagles he had played with the New York Yankees, in the same backfield with Tom Harmon and John Kimbrough, doing the blocking for the two high-priced and highly-publicized stars. . . . When he joined the Eagles, Greasy Neale let him carry the ball for the first time in his football career, and he lost the league ball carrying championship that year (1943) to Bill Paschal of the Giants by a one-yard margin. . . . He was injured in a pre-season game last year and never hit his real stride, but is looking forward to a great season in 1946.

DICK HUMBERT, football, basketball, baseball and track star at the University of Richmond, joined the Eagles in 1941, and celebrated his arrival in the big league by finishing second to Don Hutson for league pass-catching honors. . . . Served forty-one months in the Navy as skipper of a sub-chaser on duty in the Pacific. . . . Upon discharge joined the team late last season. . . . In pre-season games this year has shown that he has lost none of his pass-snaring wizardry. . . . Born in Reading, he now lives in Lewisburg, Pa., with his wife and nine-months-old daughter.

FRANK KILROY, 250 pounds of red-headed, fighting Irishman, will be playing his fourth season with the Eagles, being signed for the 1943 season after a brilliant college career at Temple University. . . . During the war he served as an officer in the Merchant Marine. . . . Coach Greasy Neale says this young giant—he is only 25 years old—has it in him to become one of the greatest tackles of all time. . . . Is married and lives in Philadelphia.

BEN KISH is starting his sixth year in the league and his fourth with the Eagles. One of the game's greatest blockers, Ben has been a bulwark of the Eagles' defense since he joined the team in 1943. . . . Following a brilliant college career at Pittsburgh, he was named captain of the East Team in the annual East-West Game of 1940, and was drafted by the Chicago Cardinals for that season, being traded later to the Brooklyn Dodgers. . . . He was purchased by the Eagles in 1943. . . . Married and lives in North Tonawanda, N. Y.

VIC LINDSKOG is playing his third season with the team. . . . A member of Stanford's great Rose Bowl team in 1941, he was regarded as one of the greatest pivot men ever developed on the West Coast. . . . Also won the Golden Gloves Pacific Coast Heavyweight Boxing Championship. . . . Extremely fast for a man his size, he is one of the first players downfield under kicks, and Coach Neale considers him one of the great downfield blockers of all time. . . . During the war he was a physical instructor at Stanford for an army specialized training program. . . . He is married and has one son, "Butch." . . . His home is in Palo Alto, California.

DUKE MARONIC, one of the two non-collegians on the Eagles, has made good in the pro loop without benefit of college coaching, and is strictly a product of the Steelton (Pa.) sandlots. . . . Although he won scholastic honors as a member of Steelton High School, it was with the semi-pros of the Pennsylvania coal region that he really learned to give it out—and take it. . . . He is a natural football player, cool under fire, and quick to learn. . . . Only 25, he has already won a starting berth as guard on the Eagles, and has many years of pro ball ahead of him. . . . Still lives in Steelton with his wife and infant son.

EDDIE MICHAELS is starting his eleventh year in professional football. . . . He has spent six years in the National Football League, and four in the American Association (now the American Football League). . . . Between engagements with the Chicago Bears in 1936 and 1938, he sandwiched a tour of duty with the Washington Redskins in 1937.

(Continued on Page 25)

Old Original **BOOKBINDERS**

125 WALNUT ST.

"... down ... on Walnut Street, there is still one of the finest sea-food restaurants in the world, Bookbinders."—Struthers Burt—PHILADELPHIA HOLY EXPERIMENT.

STEAKS

SHORE DINNERS

CHOPS

Open Daily

SCORES OF PAST EAGLES-GIANTS GAMES

1937	7	16	1939	3	13	1941	0	24	1944	17	24
	0	21		10	27		0	16		21	21
1938	14	10	1940	14	20	1942	17	35	1945	38	17
	7	17		7	17		0	14		21	28

GAMES WON BY EAGLES, 2; GIANTS, 13; TIED, 1

"Deliciously Different"



**HOLD ON TO
YOUR WAR
BONDS**

DARLENE
ICE CREAM

PHILA. DAIRY PRODUCTS CO., INC.

4th and Poplar Streets

Philadelphia Eagles Player Roster

No.	Player	Pos.	Ht.	Wt.	College	Yr. in NFL
7	ZIMMERMAN, ROY	QB	6.02	208	San Jose State	7th
10	SHERMAN, AL	QB	5.11	173	Brooklyn College	4th
11	THOMPSON, TOMMY	QB	6.00	195	Tulsa	5th
15	VAN BUREN, STEVE	HB	6.01	207	Louisiana State	3rd
30	PRITCHARD, BOSH	HB	5.10	170	Virginia Mil. Inst.	2nd
31	CASTIGLIA, JIM	FB	5.10	223	Georgetown	3rd
33	CRAFT, RUSSELL	HB	5.09	176	Alabama	1st
36	MUHA, JOE	FB	6.01 1/2	206	Virginia Mil. Inst.	1st
37	STEELE, ERNIE	HB	6.00	182	U. of Washington	5th
40	ORMSBEE, ELLIOTT	HB	5.10	172	Bradley Tech	1st
41	STEINKE, GIL	HB	6.00	174	Texas A. & I.	3rd
43	HINKLE, JACK	HB	6.00	185	Syracuse	5th
44	KISH, BEN	FB	6.01	221	Pittsburgh	6th
51	GRAVES, RAY	C	6.00	204	Tennessee	3rd
52	LINDSKOG, VIC	C	6.01	202	Stanford	3rd
53	WOJCIECHEWICZ, A.	C	6.00	220	Fordham	8th
60	MICHAELS, EDDIE	G	5.10	217	Villanova	7th
61	MARONIC, DUKE	G	5.09	217	No college	3rd
62	LIO, AUGIE	G	5.11	243	Georgetown	6th
64	MCDONOUGH, BOB	G	5.10	218	Duke	1st
66	WYHONIC, JOHN	G	6.00	203	Alabama	1st
70	WISTERT, AL	T	6.01	206	Michigan	4th
71	DOUGLAS, OTIS	T	6.00	223	William & Mary	1st
74	EIBNER, JOHN	T	6.03	217	Kentucky	3rd
76	KILROY, FRANK	T	6.01	250	Temple	4th
79	SEARS, VIC	T	6.03	210	Oregon State	6th
81	HUMBERT, DICK	E	6.01	176	U. of Richmond	3rd
82	SMEJA, RUDY	E	6.02	196	Michigan	3rd
83	FERRANTE, JACK	E	6.00	200	No college	4th
84	CABRELLI, LARRY	E	5.10	185	Colgate	6th
88	MCDOWELL, JAY	E	6.02	210	U. of Washington	1st
89	KRIEGER, ROBERT G.	E	6.01	190	Dartmouth	2nd

Head Coach, EARLE NEALE, West Virginia Wesleyan
Asst. Coach, JOHN KELLISON, West Virginia Wesleyan
Backfield Coach, CHARLIE EWART, Yale
Trainer, FRED SCHUBACH
Doctors, HARRISON F. FLIPPIN and FREDERICK A. BEALE

The Official Watch for Timing Today's Game Is Longines—"The World's Most Honored Watch"

PRO FOOTBALL CLASSIC - - -

— NEXT HOME GAME —

EAGLES vs. WASHINGTON REDSKINS

Shibe Park -:- Sunday, November 24, 1946

Every Wednesday
PHILCO
invites you to listen to

*Bing
Crosby!*



From now on, Wednesday is the night to hear Bing Crosby . . .
on "Philco Radio Time." Yes, radio's greatest singing personality is now brought
to you exclusively by Philco, world's largest radio manufacturer. So,
to hear Bing sing, listen every Wednesday night to his brand new show
for Philco . . . at 10 o'clock in the east and 9 o'clock everywhere else, over the
ABC Network plus many additional stations throughout the nation.



PHILCO

Famous for Quality the World Over



THE T-FORMATION has sprouted wings! Not that many coaches who had the unenviable job of doping out a successful defense for the bewildering quick-opening plays of the T ever thought otherwise. One coach reports that one of his star linemen, before being placed in protective custody recently, kept repeating: "Planes, coach, those fellows are using planes!"

But the Winged-T refers neither to the seemingly lighter-than-air gyrations of the T, nor (Heaven help us!) a suddenly discovered angelic quality it possesses. The Winged-T is nothing less than a full-fledged relative of the original T with a clever new variation that makes the devastating system even more effective! That is why you can expect to see a lot of it on the gridiron this fall.

The new formation is particularly associated with the masterminding of Coach Lou Little and his Columbia staff. In its first full season of use by the Blue and White last year this tricky variation of the basic T proved highly successful and many coaches have made reservations on the Winged-T this fall.

For over six years now, since the advent of the T in its modern destructive form, coaches have been faced with the dilemma of installing the new spectacular system or retaining the more familiar single-wing. Many reluctantly swallowed a dose of T only to find it was a mighty potent brew! The brain-child of the Chicago Bears' coaching staff, like any other powerful weapon, proved difficult to handle. Often instead of firing a back in approved fashion through the line into the clear, it "back-fired!" The reason for this is that the T is a demanding system. It takes a lot of work to get the right blend, and among the physical ingredients it requires are a fast, hard-plunging fullback, twinkletoe, quick-starting half-backs, an adroit ball-handling and passing quarterback, and linemen who can "brush-block" or screen their opponents at just the right moment. Over and above all, the whole attack is geared to split-second timing and precision, and a slight slip-up in the delicate mechanism of the T can pile up a play.

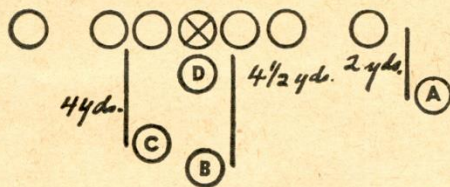
Many college teams disliked giving up the two and three-man interference of the single-wing, with its accent on the time-tested formula of "mowing 'em down," for the intricacies of the sometimes cantankerous model-T. As a result harassed coaches lay awake nights devising methods of combining the crushing strength of the single-wing with the explosive fury of the T. Several deviations, which leaned more or less to one system or the other, were worked out. Teams like Michigan and Ohio State, for instance, lined up with their backs in a T-formation and either ran plays directly from it or shifted into the single-wing before the ball was snapped back.

THE WINGED-"T"

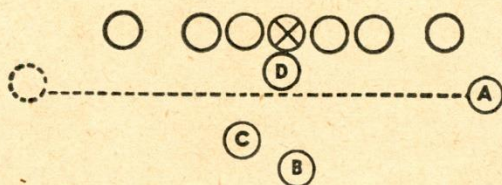
by Cal Small



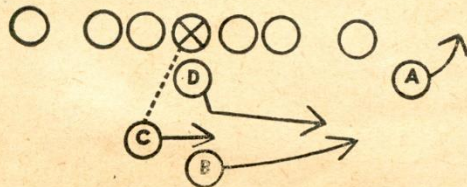
It remained for the coaching staff of Columbia, however, to develop fully a placing of the backs so that, *without the tip-off of a shift or non-shift, plays of either system could be sprung with equal ease.* The ingenious new Winged-T formation lines up like this (when the line is balanced):



The right halfback (A) is the wing and gives the formation its name. What has happened to the original T is that the right half has been shifted over to the flank from a point on the right side of the fullback (B) exactly corresponding to the halfback's position on the left (C). Now if the wing (A) is sent into motion before the ball is handed to the quarterback (D) a regular T-formation play can be worked:



If, however, the situation on the field indicates the wisdom of a single-wing power slant, the ball can be centered back directly to the left half or fullback and he can hit the line with several backs clearing the way for him:



Like atomic energy, the possibilities are endless! A team using the Winged-T has at its disposal the over four-hundred plays and sequences of the T-system and the benefit of over twenty years of single-wing development. Imagine the predicament of a lineman who has just been snowed under by a wall of interference on a single-wing play and then rises groggily to see a fleet-footed back knife through suddenly on a T thrust! No wonder coaches and fans are hopping on board the Winged-T this fall!



FORWARD PASS

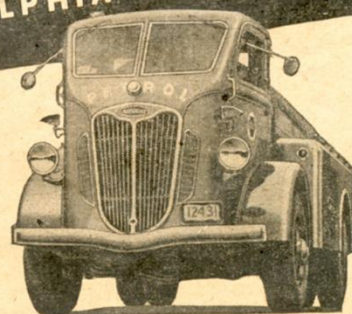
your heating worries this winter to Petrol and you'll score a satisfying victory against Old Man Winter. Petrol-plus service will make the runs to your home when you need oil, tackle the problem of variable weather, help you score the goal you're after—complete, care-free heating comfort all winter long. That's why so many thousands of Philadelphians root for the winning Petrol-plus teamwork.

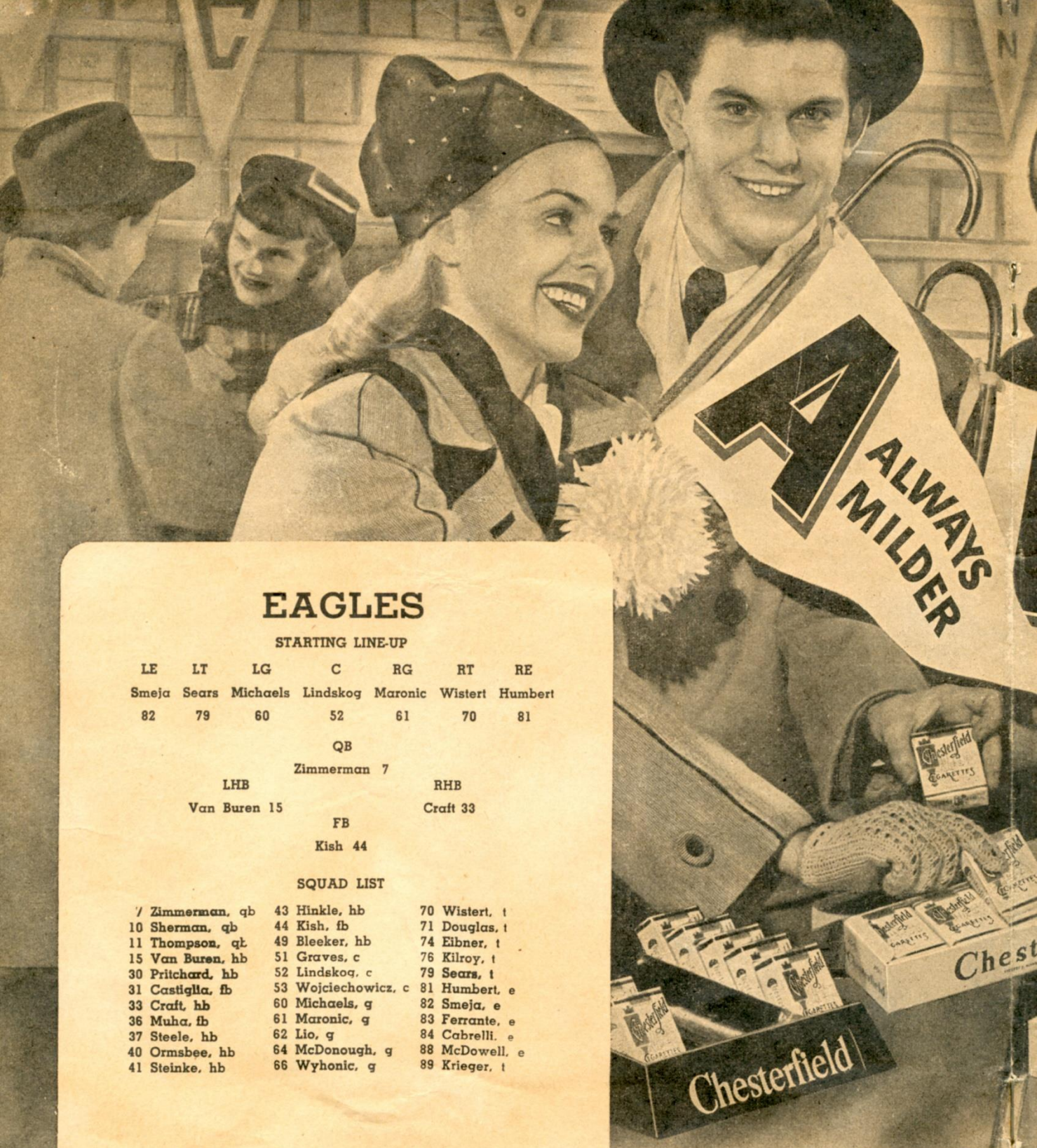
Petrol • plus SERVICE

1. Clean, dependable fuel oil
2. Prompt deliveries
3. Light, fast trucks
4. Courteous, careful drivers
5. Weather-Control deliveries
6. Ventalarm
7. Printed meter receipts
8. Neighborhood terminals
9. Round-the-clock oil burner service

PETROL CORPORATION
2012 CHESTNUT STREET, PHILADELPHIA 3
PHONE: LOCust 7-1400

LOOK FOR THE RED-AND-BLUE TRUCK
FOR CLEAN, DEPENDABLE FUEL OIL





EAGLES

STARTING LINE-UP

LE	LT	LG	C	RG	RT	RE
Smeja	Sears	Michaels	Lindskog	Maronic	Wistert	Humbert
82	79	60	52	61	70	81

QB

Zimmerman 7

LHB

Van Buren 15

RHB

Craft 33

FB

Kish 44

SQUAD LIST

7 Zimmerman, qb	43 Hinkle, hb	70 Wistert, t
10 Sherman, qb	44 Kish, fb	71 Douglas, t
11 Thompson, qt	49 Bleeker, hb	74 Eibner, t
15 Van Buren, hb	51 Graves, c	76 Kilroy, t
30 Pritchard, hb	52 Lindskog, c	79 Sears, t
31 Castiglia, fb	53 Wojciechowicz, c	81 Humbert, e
33 Craft, hb	60 Michaels, g	82 Smeja, e
36 Muha, fb	61 Maronic, g	83 Ferrante, e
37 Steele, hb	62 Lio, g	84 Cabrelli, e
40 Ormsbee, hb	64 McDonough, g	88 McDowell, e
41 Steinke, hb	66 Wyhonic, g	89 Krieger, t



**FOR ALL THE BENEFITS
OF SMOKING PLEASURE**

ALWAYS BUY

ALL OVER



B BETTER
TASTING

C COOLER
SMOKING

NEW YORK GIANTS

STARTING LINE-UP

LE	LT	LG	C	RG	RT	RE
Poole	Coulter	Dobelstein	Gladchuk	Younce	White	Howell
80	79	67	51	60	77	81

QB

Gorgone 25

LHB

Filchock 40

RHB

Franck 37

FB

Paschal 38

SQUAD LIST

1 Cope, t	40 Filchock, b	67 Dobelstein, g
10 Livingstone, b	41 Nix, b	70 Byler, t
11 Doolan, b	44 Reagan, b	71 Ragazzo, t
12 Brown, b	50 Strong, b	77 White, t
15 Soar, b	51 Gladchuk, c	79 Coulter, t
22 Hare, b	55 De Filippo, c	80 Poole, e
23 Filipowicz, b	57 Palazzi, c	81 Howell, e
25 Gorgone, b	60 Younce, g	83 Weiss, e
30 Hapes, b	61 Tuttle, g	85 Mead, e
37 Franck, b	65 Lunday, g	87 McCafferty, e
38 Paschal, b	66 Edwards, g	88 Liebel, e
		90 Carroll, t

BUY CHESTERFIELD

EVER AMERICA — *They're Tops*



WAlnut 2-0234

LYON & ARMOR Inc.

Printers

MAGAZINES
CATALOGUES
BOOK WORK



147 North Tenth Street
PHILADELPHIA, PENNA.

NEXT HOME GAME NOV. 24
WASH. REDSKINS at PHILADELPHIA

"Sidestep" Parking and Traffic Worries

**USE CONVENIENT PTC LINES
TO THE EAGLES HOME GAMES**

To SHIBE PARK... Take Route 21 or 33. Or
take Broad St. Subway to North Philadelphia
Station, then Route 54 west on Lehigh Ave.



FOR MEN ONLY

Yes, that was an old-fashioned idea about sporting goods stores, but at the new Mitchell & Ness store, you will be pleasantly surprised to find a modern sporting goods store especially designed to make shopping convenient and pleasant for all members of the family.

Women will like to shop at Mitchell & Ness because of the fine appointments and courteous service. Then, too, the location, within two blocks of all public transportation systems, is ideal. And for those who travel by automobile, there are two parking lots just across the street.

MITCHELL & NESS
1312 Arch Street
Philadelphia, Pa.

Giants To Watch



GEORGE FRANCK

GEORGE (SONIE) FRANCK, halfback, U. of Minnesota, 1939-41. Third season with Giants. Twenty-seven, 180, 6.00. Joined the Giants in 1941. After late start started to click, scoring four touchdowns on long runs. Rejoined club mid-season last year after crashing twice in Southwest Pacific as Marine flyer pilot. All-American ten-second halfback at Minnesota. Also won sprint honors. Voted most valuable member of 1941 Chicago All-Star team. Played semi-pro baseball in Midwest last summer as conditioner for '46 grid-iron campaign. Home—Mason City, Iowa.



FRANK LIEBEL

FRANK LIEBEL, End. Norwich U, 1940-42. Fifth season with Giants. Twenty-seven, 220, 6.01. National League's outstanding pass receiver in 1945 with ten touchdowns and 60 points, his club's leading scorer for the year. One of pro football's foremost 1945 accomplishments was Liebel's catch of three touchdown passes thrown by Arnie Herber in less than seven minutes.



**DESIGNED
FOR YOUR
PLEASURE**

*Today,
Tomorrow
and Always*



CHEER LEADER... For good cheer,
for good fellowship, for friendliness, Seagram's
7 Crown has proved itself a natural leader. And
no wonder. It's been in training for this particular
position for exactly 89 years!

Say Seagram's and be Sure of Pre-War Quality

Seagram's *Seven* **7** *Crown*

Seagram's 7 Crown Blended Whiskey. 65% Grain Neutral Spirits. 86.8 Proof. Seagram-Distillers' Corporation, Chrysler Building, New York

BURK'S Famous Quality

FRANKFURTER'S

Sold Exclusively at

SHIBE PARK

"The Taste is There"

New York Giants Roster

No.	Name	Post	Ht.	Wt.	College	Years Giant
1	COPE, FRANK (Capt.)	LT	6.02	230	Santa Clara	8
10	LIVINGSTON, HOWIE	RH	6.01	190	Fullerton J. C.	3
11	DOOLAN, JACK	RH	6.00	195	Georgetown	2
12	BROWN, DAVE	RH	5.11	190	Alabama	1
15	SOAR, HANK	RH	6.00	215	Providence	9
22	HARE, CECIL	FB	5.11	195	Gonzaga	1
23	FILIPOWICZ, STEVE	QB	5.08	200	Fordham	2
25	GORGONE, PETER	QB	6.00	220	Muhlenberg	1
30	HAPES, MERLE	FB	5.11	195	Mississippi	2
37	FRANCK, GEORGE	FB	6.00	190	Minnesota	3
38	PASCHAL, BILL	FB	6.00	200	Georgia Tech	4
40	FILCHOCK, FRANK	LH	5.11	190	Indiana	1
41	NIX, EMERY	LH	5.11	180	T.C.U.	2
44	REAGAN, FRANK	LH	6.00	185	Penn	1
50	STRONG, KEN	FB	6.01	210	New York U.	8
51	GLADCHUK, CHESTER	C	6.05	245	Boston College	2
55	DeFILLIPPO, LOU	C	6.01	230	Fordham	3
57	PALAZZI, LOU	C	6.00	195	Penn State	1
60	YOUNCE, LEN	LG	6.01	210	Oregon State	4
61	TUTTLE, ORVILLE	RG	5.09	215	Oklahoma City	6
65	LUNDAY, KEN	LG	6.03	220	Arkansas	6
66	EDWARDS, BILL	RG	6.00	215	Baylor	4
67	DOBELSTEIN, BOB	RG	6.01	210	U. of Tenn.	1
70	BYLER, JOE	RT	6.05	255	Nebraska	1
71	RAGAZZO, PHIL	RT	6.02	220	West. Reserve	2
77	WHITE, JAMES	LT	6.02	225	Notre Dame	1
79	COULTER, DeWITT	LT	6.04	225	West Point	1
80	POOLE, JIM	LE	6.03	225	Mississippi	6
81	HOWELL, JIM LEE	RE	6.06	215	Arkansas	7
83	WEISS, JOHN	RE	6.03	205	H. Snyder H. S.	3
85	MEAD, JACK	RE	6.03	210	Wisconsin	1
87	McCAFFERTY, DON	LE	6.04	220	Ohio State	1
88	LIEBEL, FRANK	RE	6.01	220	Norwich	5
90	CARROLL, VICTOR	RT	6.04	230	Nevada	4

Head Coach, STEVE OWEN, Phillips U.

Assistant Coach, RICHARD (RED) SMITH, Notre Dame

Line Coach, BILL OWEN, Phillips U.

Dentist, ARTHUR C. CROKER, D.D.S.

Backfield Coach, MIKE PALM, Penn State

Trainers, GUS MAUCH, CHARLEY PORTER

Physician, FRANCIS J. SWEENEY, M.D.

The Official Watch for Timing Today's Game Is Longines — "The World's Most Honored Watch"

After the Game

JOIN the HUDDLE



Where members of the original Bookbinder family are always on hand in person to see that your meal is the complete success that has made "Bookbinders Sea Food House" traditionally famous.

at **BOOKBINDERS**

SEA FOOD HOUSE, INC.

215 SOUTH 15th STREET

(Open 6 days a week including Sundays till midnight — closed all day Monday)

NOT CONNECTED WITH ANY OTHER RESTAURANT

WIBG



Broadcasting the Eagles Games



The Temple Games



Franny Murray's Sporting Page



Chuck Thompson—School Sports

DIAL 990

Official timing watch for the



EAGLES vs. GIANTS FOOTBALL GAME

Longines

The World's Most Honored Watch

winner of 10 world's fair grand prizes,

28 gold medals, and more honors for

accuracy than any other timepiece



Product of Longines-Wittnauer Watch Co.



Ringneck Pheasants for distinctive holiday dinners

OUR 1946 'hatch' of young, tender Ringneck Pheasants, the 'King of Game Birds', is now ready for shipment to those who desire something really different to serve during the festive holiday season. These prime birds, fed nothing but the choicest of fattening grains to make them plump, juicy and delicately flavored, will make a regal feast that will be long remembered. Anyone can roast them to perfection.

Plan now to serve Berkshire Game Farm pheasants as the main course at your important holiday dinner parties. A brace (hen and cock) will provide an un-

forgettable meal; and these magnificent birds, raised to grace a sportman's table, will add a new lustre to your reputation as a clever host or hostess. You and your guests will be thrilled over this unusual taste treat.

The birds are shipped in full plumage, or completely dressed, fast-frozen and wrapped in Pliofilm, the moistureproof guardian of goodness. A jar of home-made currant jelly and recipes for preparation are included with each order. Delivery in perfect condition anywhere in the United States is guaranteed. The price is \$12.00 per brace (2 birds), shipped prepaid.*

PRECOOKED WILD RICE!

Here's news! This rare and precious delicacy, practically a *must* on any menu that includes game birds, is now fully prepared, ready for you to heat and serve. Cooked to perfection, light and fluffy, it is packed in tins containing just the proper amount to serve with a brace of pheasants. We have a limited supply for those who demand a cuisine that is correct to the last detail. Be sure to include Precooked Wild Rice in your order! 12 ounce tin, \$1.35. 6 for \$8.00. Shipped prepaid.

AN UNUSUAL HOLIDAY GIFT!

What could be a more perfect expression of your own refined tastes than a brace of these Berkshire Game Farm Pheasants. If you are searching for 'something different' for those special names on your gift list, here is a wonderful way to say 'Happy Thanksgiving' or 'Merry Christmas'. Merely send us your list and we will ship gift packages for you at no extra charge. The gift package includes a brace of birds, in full plumage or dressed, a jar of currant jelly, recipes for preparation, and your gift card. A tin of Precooked Wild Rice will also be included if you wish.

A NEW TASTE SENSATION!

Smoked Pheasant



We have a limited number of Smoked Pheasants, a delicacy that is unsurpassed for eating enjoyment, for those who want something completely different. These are choice, plump birds from our own game farm, delicately seasoned with herbs and spices, and carefully smoke-cooked over aromatic applewood embers to a rich golden-brown. Truly a dish 'fit for a King'.

For a really exciting taste thrill, a flavor so delicious it is beyond comparison, order a brace of these Smoked Pheasants today! \$14.00 per brace. Also Smoked Mallard Ducks, \$10.00 per brace. Shipped prepaid.*



* Shipment to distant points is made by air express. You will be billed for the difference between rail and air charges. Safe arrival guaranteed.

**Berkshire
GAME FARM**

CRARYVILLE, N. Y.

NEW YORK OFFICE
271 MADISON AVE., NEW YORK CITY

BERKSHIRE GAME FARM, New York Office
271 Madison Avenue, New York 16, N. Y.

Please ship the items checked below, express prepaid*, to me at the following address. My check for \$..... is enclosed.

NAME.....

STREET.....

CITY..... ZONE..... STATE.....

- ☐ RINGNECK PHEASANTS, \$12.00 per brace
(includes currant jelly and recipes)
☐ full plumage ☐ oven-dressed
- ☐ PRECOOKED WILD RICE, 12 oz. tin, \$1.35

- ☐ SMOKED PHEASANTS
\$14.00 per brace
- ☐ SMOKED MALLARDS
\$10.00 per brace

To order gifts, merely attach your list with a selection from the above indicated for each name. Please specify whether for Thanksgiving, Christmas, or New Year's delivery. If you wish us to enclose your personal greeting cards, send the proper number with your order; if our cards are to be used, please print the name that is to be signed on the cards.



50,000 WATTS

Exclusively Broadcasting
All Games of the
**UNIVERSITY OF
PENNSYLVANIA**
For the
Eleventh Consecutive Year

WCAU
C.B.S. AFFILIATE

PHILADELPHIA'S LEADING RADIO INSTITUTION

Eagles Thumbnail Sketches

(Continued from Page 10)

... In 1939 he signed with the Wilmington Clippers, and remained with them four years, signing on with the Eagles in 1943. ... One of the strongest men in football today, Eddie keeps himself in shape during the off season by doing a little professional wrestling. ... Married and the father of a happy family, he makes his home in Wilmington, Delaware.

JOE MUHA, Virginia Military Institute's great triple threat fullback, was chosen by the Eagles as their first draft choice in 1943, but service with the Marine Corps prevented his reporting until this season. ... He served with the Marines for three years in the Pacific, Hawaii and Japan. ... Received the Presidential Unit Citation for action on Iwo Jima as an artillery forward observer. ... A versatile athlete, Muha won 10 letters at V. M. I. in football, baseball and track. ... He is married. ... Born in Central City, Pa., he now lives in Alhambra, California.

RUSSELL CRAFT, one of the South's great ball carriers, played his last college football at the University of Alabama in 1942, enlisting in the army upon graduation in the spring of '43. ... Regarded by the Eagles' coaches as one of the best prospects to come up to the big time in many a day. ... Served as a first lieutenant in the European Theatre, seeing service in France, Holland, Luxembourg and Germany. ... Is married and the father of a three-year-old daughter.

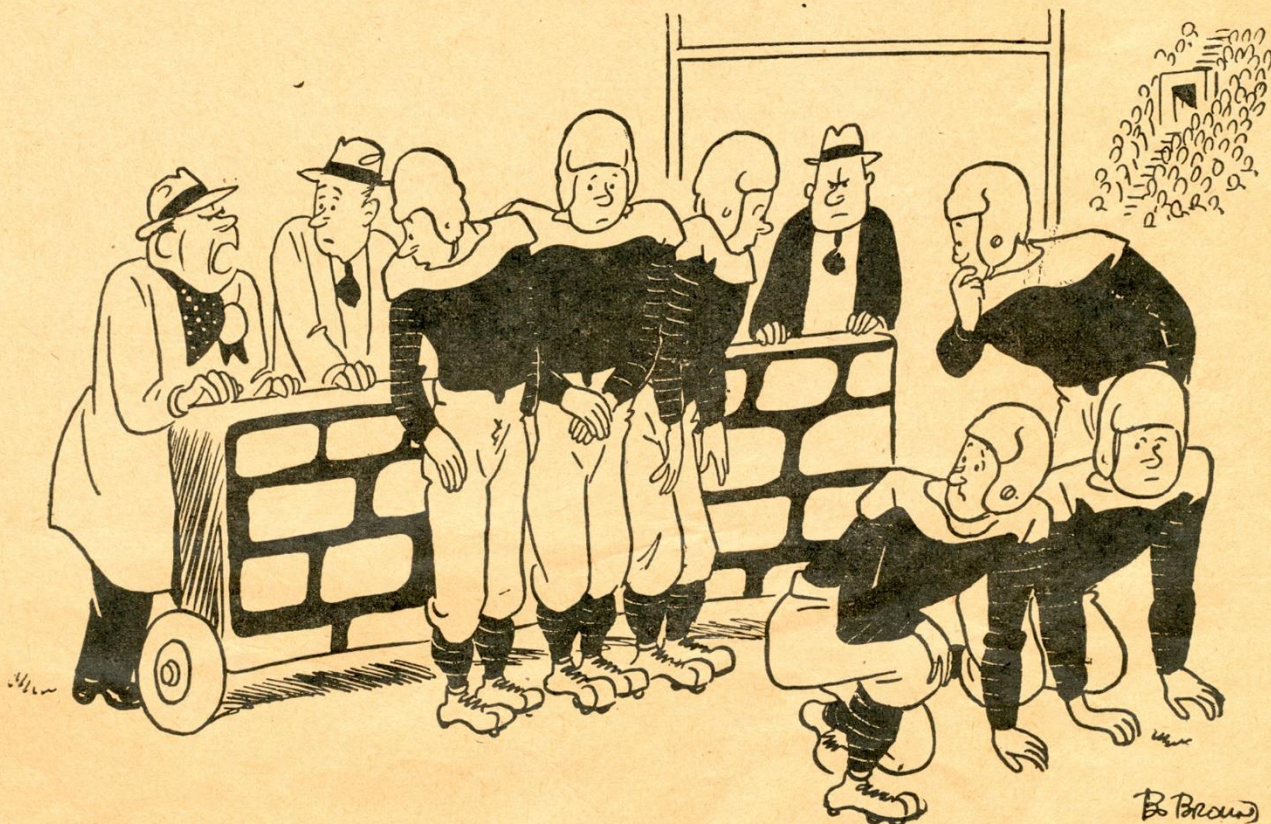


In 1876 when President Grant visited the Philadelphia Centennial, Schmidt's was a favorite Philadelphia brew.

Same Name ... Same Quality
SINCE 1860

Schmidt's
OF PHILADELPHIA
Beer Ale

© 1946 C. SCHMIDT & SONS, INC.



"It's the only way to make 'em realize their backs are to the wall!"

For Good Sports - -

7:30 THURSDAY NIGHT

"Here Comes Harmon"

BEFORE THE GAME SATURDAY

"Pigskin Preview"

6:30 SATURDAY

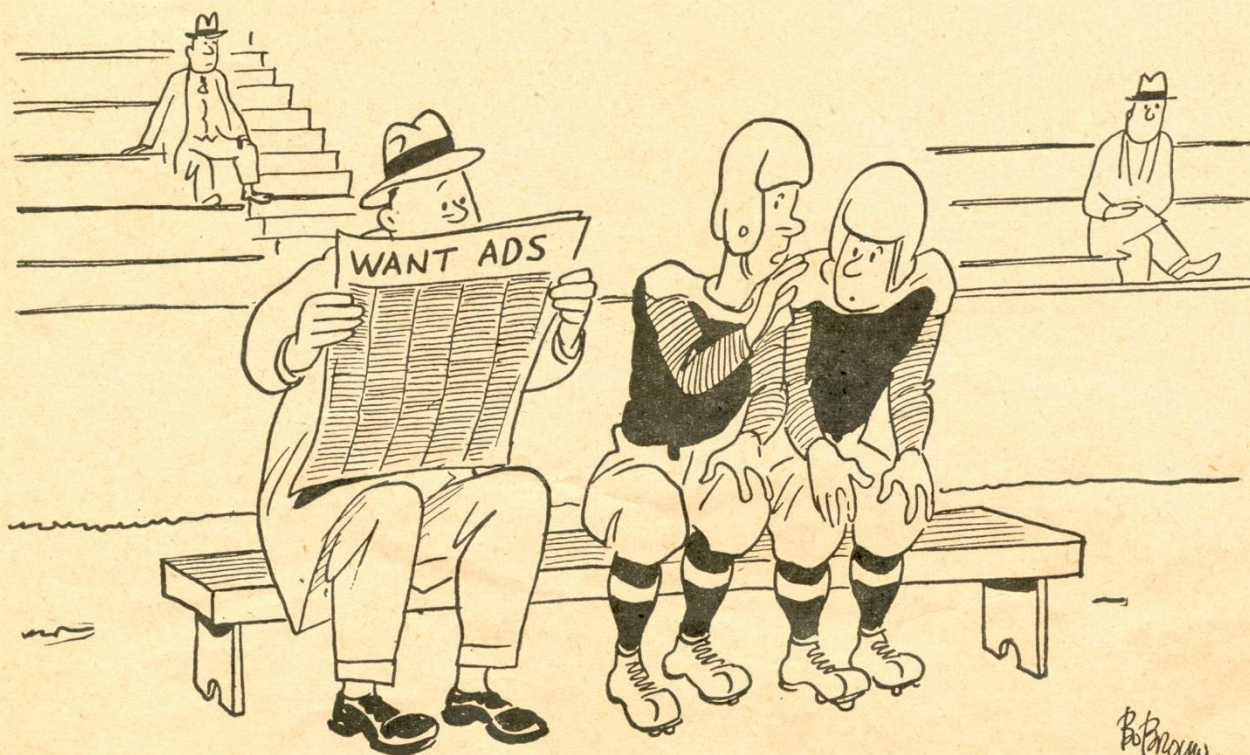
"Hunting and Fishing Club"

6:45 SATURDAY

"Football Roundup"

K Y W

1060 ON YOUR DIAL



"I don't think the Coach is satisfied with us!"

Bob Brown

Thumbnail Sketches of New York Giants

PASCHAL, WILLIAM (WILD BILL). Fullback. Georgia Tech, 1941. Fourth season with Giants. Twenty-four, 200, 6:0. Won National League ground-gaining title in 1943 (12 touchdowns, 572 yards) and 1944 (9 touchdowns, 737 yards). In Maritime service, played only half of 1945 season. Due to leg injury, had only few minutes of varsity football. Married. Two children. Birthplace—Atlanta. Home—New York.

POOLE, JAMES EUGENE (JIM). End. U. of Mississippi, 1934-36. Sixth season with Giants. With Chicago Cardinals last year. Thirty-one, 225, 6:2. Former All-National League end. Consistently one of the circuit's leading wingmen. Won three letters for football, baseball, basketball. Member of noted Ole Miss gridiron family. Brother of Barney Poole, current West Point regular end. Off-season occupation—farming and coaching basketball at U. of Mississippi. Married. One child. Home—Grenada, Miss.

SOAR, ALBERT HENRY (HANK). Fullback. Providence College, 1935-37. Ninth season with Giants. Thirty, 220, 6:2. Unusual pass defender and team player. Long army service in Greenland where he heard radio accounts of all Giant contests. Off-season occupation—baseball and basketball officiating. Married. Home—Pawtucket, R. I.

STRONG, KEN. Fullback. New York U., 1926-28. Twelfth year in National League, eight with Giants, four with Stapleton. Thirty-nine, 210, 6:0. Second all-time Giant high scorer, 275 points, 16 touchdowns, 30 field goals, 89 extra points. Giants' famed kicking specialist. Biggest thrill: scoring two touchdowns, one field goal, two extra points to beat Chicago Bears for 1934 national championship on ice-covered Polo Grounds.

WHITE, JAMES J. (JIM). Tackle. Notre Dame, 1941-43. First season with Giants. Twenty-five, 225, 6:2. All-American selection on Notre Dame's 1943 national championship eleven. The Irish beat Army 26-0 that year. The Cadets rebounded from that setback to win every game to the 1946 opening. White considered Notre Dame's all-time tackle. Off-season occupation—stevedoring. Home—Edgewater, N. J.

BYLER, JOE (BIG BOY). Tackle. U. of Nebraska, 1941-43. Twenty-four, 260, 6:5. Biggest Giant in club's history. First season with Giants; also as pro. Smashing type of lineman, winning All-American mention in 1942. Recent Army dischargee. Off-season occupation—construction. Married. Home—Republic, Nebr.

CARROLL, VICTOR E. (VIC). Tackle. U. of Nevada, 1934-36. Eleventh season in National League, four with Giants, seven with Washington. With Redskins played every line position. Most unusual accomplishment—putting on football shoes again after Redskins lost to Chicago Bears 73-0 for 1940 national championship. Gained three college letters each in football and basketball, one for swimming. Off-season occupation—engineering. Married. Two children. Home—Bellflower, Calif.

COPE, FRANK. Tackle. U. of Santa Clara, 1936-38. Ninth season in National League, eight with Giants. Thirty-one, 240, 6:2. Held all-National League

honors for tackles. Consistently one of the top circuit's best tackles. Earned college football letters. Off-season occupation—school teacher. Home—San Lorenzo, Calif.

COULTER DEWITT (TEX). Tackle. Dropped from United States Military Academy in June, 1946 because he was deficient in mathematics. Signed with the Giants several weeks later. Twenty-one, 225, 6:3. The Texan was rated West Point's greatest all-time tackle. He was named on practically every All-American team. Coulter was an outstanding boxer. He also won weight titles. He was placed second in the Cadet Corps severe physical test for strength and agility. All-American tackle, Coulter may develop into one of the gridiron's foremost ends. Last July Coulter married Miss Ruth Tindle of Fort Worth, a former student of Masonic Home. It was there that Coulter first won fame as a football star and track luminary. Occupation—commercial art study. Home—Fort Worth, Texas.

DEFILIPPO, LOU. Center. Fordham, 1938-40. Third season with Giants. Thirty, 230, 6:2. Out of the Navy in Southwest Pacific in time to perform last year. Rated Fordham's all-time No. 1 center. This season will snap the ball back to two former Ram mates, Jim Blumenstock and Steve Filipowicz. Last year at Fordham played 536 minutes out of possible 540. Off-season occupation—accounting. Married. One child. Home—Woodbridge, Conn.

DOOLAN, JACK. Halfback. Georgetown, 1940-42. Second season with Giants. Previously one with Redskins. Ten-second man, very dangerous in open field. Twenty-six, 195, 6:1. Home—Hasbrouck Heights, N. J.

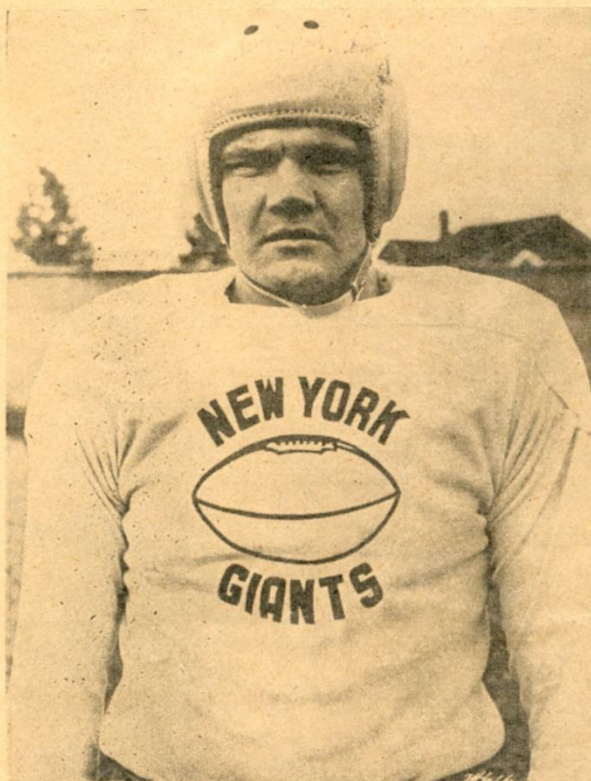
EDWARDS, W. B. (BILL). Guard. Baylor, 1937-39. Fourth season with Giants. Twenty-six, 220, 6:3. All-National League guard in 1942. Able to play every line position. Very effective down field. Off-season occupation—law. Married. One child. Home—Houston, Texas.

FILCHOCK, FRANK J. (FLIGIN' FRANKIE). Halfback. U. of Indiana, 1936-38. First season with Giants. Seventh in National League. Pittsburgh 1938. Washington 1938-39-40-41-44-45. With Navy '42-'43. National League forward passing champion in 1944. Attempts 147, completions 84, yards gained 1139, touchdowns 13. Percentage .571. Thirty, 193, 5:11. Expected to be Giants' all-time top aerialist. Won college letters in football and baseball. Passed up pro baseball career for the gridiron. Off-season occupation—salesman. Home—Washington, D. C. Born in Crucible, Pa.

FRANCK, GEORGE (SONIE). Halfback. U. of Minnesota 1939-41. Third season with Giants. Twenty-seven, 180, 6:0. Joined Giants in 1941. After late start started to click, scoring four touchdowns on long runs. Rejoined club mid-season last year after crashing twice in Southwest Pacific as Marine flyer pilot. All-American ten-second halfback at Minnesota. Also won sprint honors. Voted most valuable member of 1941 Chicago All-Star team. Played semipro baseball in Mid-West last summer as conditioner for '46 gridiron campaign. Home—Mason City, Iowa.

(Continued on Page 31)

Giant Fullbacks



DEWITT COULTER

DEWITT (TEX) COULTER. Tackle. Dropped from United States Military Academy in June, 1946, because he was deficient in mathematics. Signed with the Giants several weeks later. Twenty-one, 225, 6.03. The Texan was rated West Point's greatest all-time tackle. He was named on practically every All-American team. Coulter was an outstanding boxer. He also won weight titles. He was placed second in the Cadet Corps severe physical test for strength and agility. All-American tackle, Coulter may develop into one of the gridiron's foremost ends. Last July Coulter married Miss Ruth Tindle of Fort Worth, a former student of Masonic Home. It was there that Coulter first won fame as a football star and track luminary. Occupation—commercial art study. Home—Fort Worth, Tex.

WILLIAM (WILD BILL) PASCHAL. Full-back. Georgia Tech, 1941. Fourth season with Giants. Twenty-four, 200, 6.00. Won National League ground-gaining title in 1943 (12 touchdowns, 572 yards) and 1944 (9 touchdowns, 737 yards). In Maritime service, played only half of 1945 season. Due to leg injury, had only few minutes of varsity football. Married. Two children. Birthplace—Atlanta. Home—New York.



BILL PASCHAL

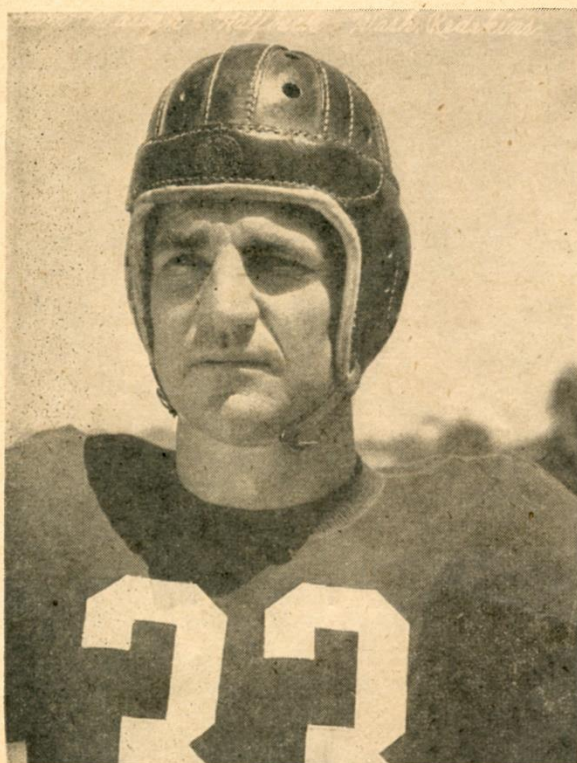
The All-American Drink



THERE'S NO BETTER kick-off to a good time than a frosty bottle of Coca-Cola. When there's life and tingle in the air, remember there's life and tingle in ice-cold Coke—to refresh you and keep you on your toes. Coke and good sport just simply go together. That's why, in stadiums across the land, *the pause that refreshes* with ice-cold Coca-Cola is part of the game—the friendly, sociable part—the part *you* play. Enjoy it.

Bottled Under Authority of The Coca-Cola Company by
PHILADELPHIA COCA-COLA BOTTLING COMPANY

The Redskins Are Coming



On Sunday, November 24th, Sammy Baugh and a tribe of vengeful Redskins will invade Shibe Park, tommyhawks in hand, determined to take a few scalps in return for the licking the high flying Eagles plastered on them in their own happy hunting grounds last Sunday.

The Washington tribe would take particular delight in beating the Eagles on any occasion but this time they are probably going through a special war dance in preparation after the way the Eagles came from behind and snatched a thrilling victory out of the hands of the confident Washington team. The 'Skins were riding along to what seemed like a sure fire easy triumph in Washnigton last Sunday when the first half ended with the Redskins on top 24 to 0, but the fighting Eagle team refused to be licked. Picking themselves up from the floor, carried on by the gifted pitching arm of Tommy Thompson, the Eagles scored an unprecedented upset by rolling up 28 points in the second half and pulling the game out 28 to 24.

For Thompson this was the greatest day in his pro-league career. The ex-Tulsa ace threw

3 touchdown passes in that last half drive. His last one to Jack Ferrante, which scored the winning touchdown, was thrown with only 90 seconds to go.

The Eagles are not resting comfortably on their laurels after their stunning victory. They know that the Redskins will be out to avenge their defeat at all costs. And they also know that this Redskin team is reminiscent of the Capitol City steamrollers of past years. Slingin' Sammy Baugh, for years one of the games outstanding aerial artists, has mastered the intricacies of T formation quarterbacking and is more of a threat than ever. In Dick Todd and Steve Bagarus the Washington aggregation has a pair of dangerous breakaway runners and in Frank Akins, last year's all-league fullback, and Jack Jenkins, they have a duo of battering ram line crashers. To add to this, the Washington forward wall, led by veteran center Aldrich, is as powerful as ever.

So the big question for this next meeting will be, will the Redskins bite the dust or add some Eagle scalps to their collection.

NATIONAL LEAGUE STANDING

Eastern Division

	<i>Points</i>					
	<i>W.</i>	<i>L.</i>	<i>T.</i>	<i>For</i>	<i>Agst</i>	
New York	4	1	0	90	62	
Washington	3	1	1	93	78	
Philadelphia	3	2	0	123	103	
Pittsburgh	3	2	1	98	69	
Boston	0	5	0	45	129	

Western Division

	<i>Points</i>					
	<i>W.</i>	<i>L.</i>	<i>T.</i>	<i>For</i>	<i>Agst</i>	
Chicago Bears	3	1	1	113	80	
Green Bay	3	2	0	70	72	
Los Angeles	2	2	1	108	118	
Chicago Cards	3	3	0	152	114	
Detroit	0	5	0	65	132	

Roster of Officials

REFEREES

No.	Name	School
2	Samuel A. Weiss	Duquesne
3	William Downes	Illinois Tech
4	Thomas Dowd	Holy Cross
5	Ronald Gibbs	St. Thomas
6	Rawson Bowen	U. C. L. A.
8	Carl Rebele	Penn State
9	Emil Heintz	Pennsylvania

UMPIRES

No.	Name	School
11	Joseph Crowley	Muhlenberg
12	Cletus Gardner	Villanova
14	Carl Brubaker	Ohio Wes.
15	Harry Robb	Penn State
16	James Blewett	California
18	John Kelly	Loyola
19	Samuel Wilson	Lehigh

FIELD JUDGES

No.	Name	School
21	Henry Haines	Penn State
22	Charles Sweeney	Notre Dame
23	Orian Landreth	Friends Univ.
24	John Fox	S. California
26	Eugene Miller	Pennsylvania
27	Wm. Grimberg	Villanova
28	William McHugh	DePaul

HEAD LINESMEN

No.	Name	School
30	Clarence Savage	Illinois
31	Charles Berry	Lafayette
32	John Mashin	Montana St.
33	Joseph Crowley	Muhlenberg
34	Yans Wallace	St. Francis
36	Dan Tehan	Cincinnati
37	Sam Pecoraro	Dallas Univ.
38	Lloyd Brazil	Detroit
39	Charles Gault	Muhlenberg

GIANTS' THUMBNAIL SKETCHES

(Continued from Page 27)

GLADCHUK, C. S. (CHET). Center. Boston College, 1938-40. Second season with Giants. Played in 1941. Joined Navy. Recent dischargee. Twenty-nine, 245, 6:4. All-American center in 1940. Keystone of B. C.'s great line that year. Chet is expected to ably fill the shoes of the departed Mel Hein, who was acclaimed the game's all-time No. 1 center in his fifteen brilliant years with the New York club. Home—Bridgeport, Conn.

HAPES, MERLE. Fullback. U. of Mississippi, 1939-41. Second season with Giants. Played in 1942. Joined Army, recently discharged. Twenty-eight, 185, 5:10. As Giant rookie finished fourteenth in National League top scorer, five touchdowns for 30 points. One of the greatest touchdown makers in southern college football. Competed in football, baseball, basketball and track. Married. Birthplace—California.

LIEBEL, FRANK. End. Norwich U, 1940-42. Fifth season with Giants. Twenty-seven, 220, 6:1. National League outstanding pass receiver in 1945 with ten touchdowns and 60 points, his club's leading scorer for the year. One of pro football's foremost 1945 accomplishments was Liebel's catching of three touchdown passes thrown by Arnie Herber in less than seven minutes.

*There's Something Special
about the Clothes at Al Cook*



The clothes at Al Cook are Something to get excited about. There's a selection that's handsome... patterns which are exclusive... tailoring by experts. See Al Cook.

SUITS - TOPCOATS - OVERCOATS

\$34.50 to \$90

Listen to Don Kellett—Philadelphia's ace Sports Commentator—Every Sunday WFIL 6:45—7:00 P.M.

No 36948

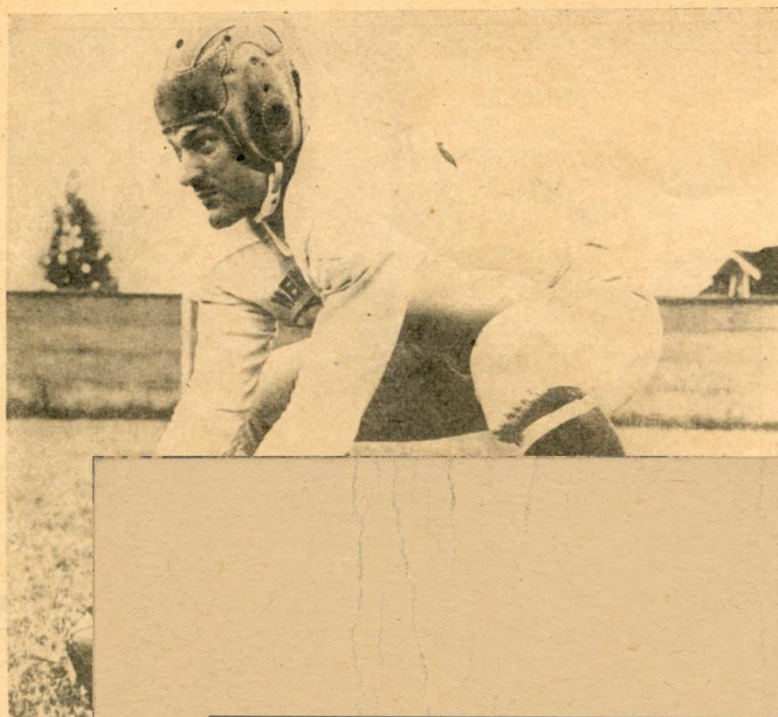


AL Cook

The Home of Nationally Famous Brands

6TH STREET AT BAINBRIDGE

Filling A Big Pair of Shoes



FIRST CLASS
Permit No. 10078
Sec. 510 (P.L.&R.)
Philadelphia, Pa.

BUSINESS REPLY CARD

No Postage Stamp Necessary If Mailed in the United States

2C.—POSTAGE WILL BE PAID BY—

PHILADELPHIA EAGLES

22 SOUTH 17TH STREET

PHILADELPHIA (3) PA.

"It's up to you to fill M

That was the toughest
Steve Owen since he starte
York Football Giants in
dressed to Chet Gladchuk l
New York club was taking

Wisc., training camp. Hein retired last Decem-
ber after fifteen continuous years in which time
he set numerous records as the game's all-time
No. 1 center and for ironman achievements.
When Ole Mel finally bowed out, the Giants
were agreed no one would ever match, or even
come close, to his tremendous record.

Gladchuk, All-American center on Boston
College's outstanding 1940 eleven, isn't the sort
to shy at big orders. When Chet received
Owen's edict to take over for Hein he quickly
got busy with increased enthusiasm. And the
towering New Englander is doing a swell job.
Giant coaches believe he'll finish the season as
the top center in the National League, which
is well stocked with star pivots. Especially

musical tune of their teeth rattling. Chet also
is a consistent accurate passer. And he loves
to play football.

After receiving his diploma Gladchuk de-
sired to continue on the gridiron. He was on
the Giants' player-draft and joined the club in
1941. Quickly realizing he had little chance
to supplant the peerless Hein, Chet asked and
received permission to try out at tackle. He
made good there. Shortly after the 1941 cam-
paign Gladchuk joined the Navy. He found
time to do some football coaching during his
Navy stint, which lasted until last spring.

Gladchuk is twenty-nine, 245 pounds, 6
feet 4 inches. Strangely, his address is 72
Tom Thumb Street, Bridgeport, Conn.

Filling A Big Pair of Shoes



CHET GLADCHUK, *whose unenviable assignment it is to plug the gap left by the retirement of the great Mel Hein.*

"It's up to you to fill Mel Hein's shoes."

That was the toughest order ever given by Steve Owen since he started coaching the New York Football Giants in 1930. It was addressed to Chet Gladchuk last August when the New York club was taking form at its Superior, Wisc., training camp. Hein retired last December after fifteen continuous years in which time he set numerous records as the game's all-time No. 1 center and for ironman achievements. When Ole Mel finally bowed out, the Giants were agreed no one would ever match, or even come close, to his tremendous record.

Gladchuk, All-American center on Boston College's outstanding 1940 eleven, isn't the sort to shy at big orders. When Chet received Owen's edict to take over for Hein he quickly got busy with increased enthusiasm. And the towering New Englander is doing a swell job. Giant coaches believe he'll finish the season as the top center in the National League, which is well stocked with star pivots. Especially

Bulldog Turner of the Bears and Charley Brock of the Packers.

Gladchuk is nearly twenty pounds bigger than was Hein at his peak. He is a more punishing backer-up than was Mel. Chet really likes to rack up opponents until he hears the musical tune of their teeth rattling. Chet also is a consistent accurate passer. And he loves to play football.

After receiving his diploma Gladchuk desired to continue on the gridiron. He was on the Giants' player-draft and joined the club in 1941. Quickly realizing he had little chance to supplant the peerless Hein, Chet asked and received permission to try out at tackle. He made good there. Shortly after the 1941 campaign Gladchuk joined the Navy. He found time to do some football coaching during his Navy stint, which lasted until last spring.

Gladchuk is twenty-nine, 245 pounds, 6 feet 4 inches. Strangely, his address is 72 Tom Thumb Street, Bridgeport, Conn.



Name Telephone

Please Print

Address Street City Zone

- (1) Please renew my present Season Ticket(s) for 1947. I desire additional seats.
- (2) I have no Season Tickets this year but for 1947 I desire Season Tickets. I prefer, if possible, () West Stand Upper, () South Stand Upper, () North Stand Upper, () East Stand Box, () East Stand Reserved.

NOTE: We cannot guarantee to fill new applications in exact location requested so kindly indicate a first and second choice.

All Season Tickets must be paid for by April 1st, 1947, or the seats will be released to other applicants.

"JUST RIGHT"

You can be sure Esslinger's is "just right." And if your program number is just right—it's printed directly above—you'll be the lucky winner of two tickets to the next Eagles' game! Announcement of lucky number winners will be made during this game!

Esslinger's

BEER



ALE

ESSLINGER'S INC., PHILADELPHIA, PA., SINCE 1868



LUCKY N^o 10615

"JUST RIGHT"

You can be sure Esslinger's is "just right." And if your program number is just right—it's printed directly above—you'll be the lucky winner of two tickets to the next Eagles' game! Announcement of lucky number winners will be made during this game!

Esslinger's

BEER



ALE

ESSLINGER'S INC., PHILADELPHIA, PA., SINCE 1868



ORIGINAL GOLD LABEL

KINSEY

Blended Whiskey

the unhurried whiskey
for unhurried moments



86,8 Proof. 65% Grain Neutral Spirits. Kinsey Distilling Corp., Linfield, Pa.