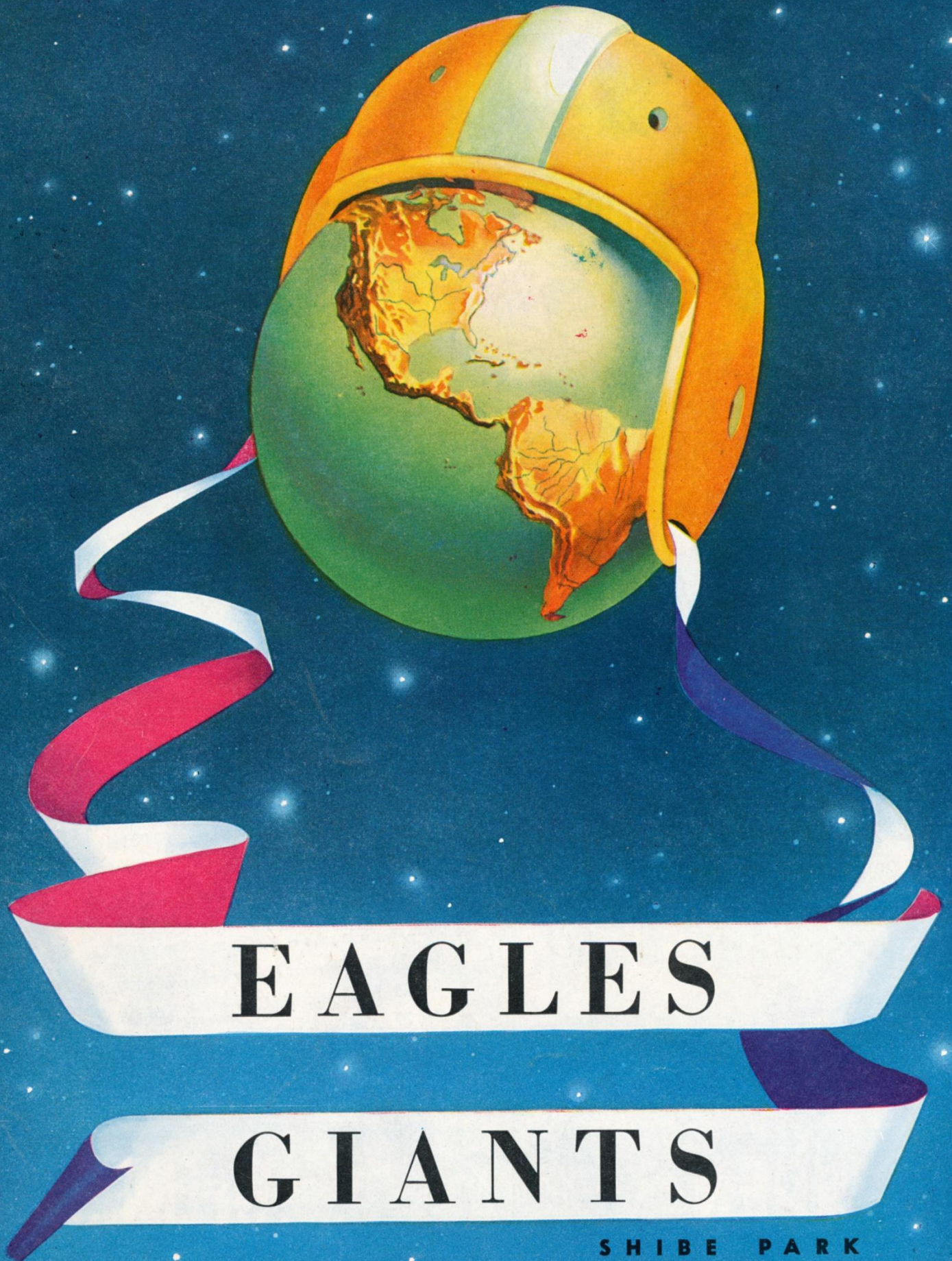


OFFICIAL **25c** PROGRAM



**EAGLES**

**GIANTS**

**SHIBE PARK**  
**DECEMBER 11 • 1949**



# WPEN



# PHILADELPHIA'S SPORTS STATION

**BASKETBALL  
FOOTBALL  
BASEBALL  
BOXING**



Broadcasting  
**ALL HOME & AWAY  
GAMES**

★ **EAGLES** ★

★ **WARRIORS** ★

★ **NOTRE DAME** ★

★ **VILLANOVA** ★

950

## COMING EVENTS

### BASKETBALL

Dec. 13	Phila. Warriors vs. Chicago	10:30 PM
Dec. 14	Penn vs. Maryland	8:00 PM
Dec. 14	Villanova vs. Tampa	9:30 PM
Dec. 16	Phila. Warriors vs. St. Louis	9:05 PM
Dec. 17	Phila. Warriors vs. Waterloo	1:30 PM
Dec. 17	St. Joseph's vs. So. Calif.	8:00 PM
Dec. 17	Temple vs. LaSalle	9:30 PM
Dec. 21	Phila. Warriors vs. Baltimore	9:05 PM
Dec. 26	LaSalle vs. U.C.L.A.	8:00 PM
Dec. 26	St. Joseph's vs. Utah	9:30 PM
Dec. 28	Phila. Warriors vs. New York	9:05 PM
Dec. 29	Temple vs. Santa Clara	8:00 PM
Dec. 29	LaSalle vs. San Francisco	9:30 PM
Dec. 31	Phila. Warriors vs. Fort Wayne	9:05 PM

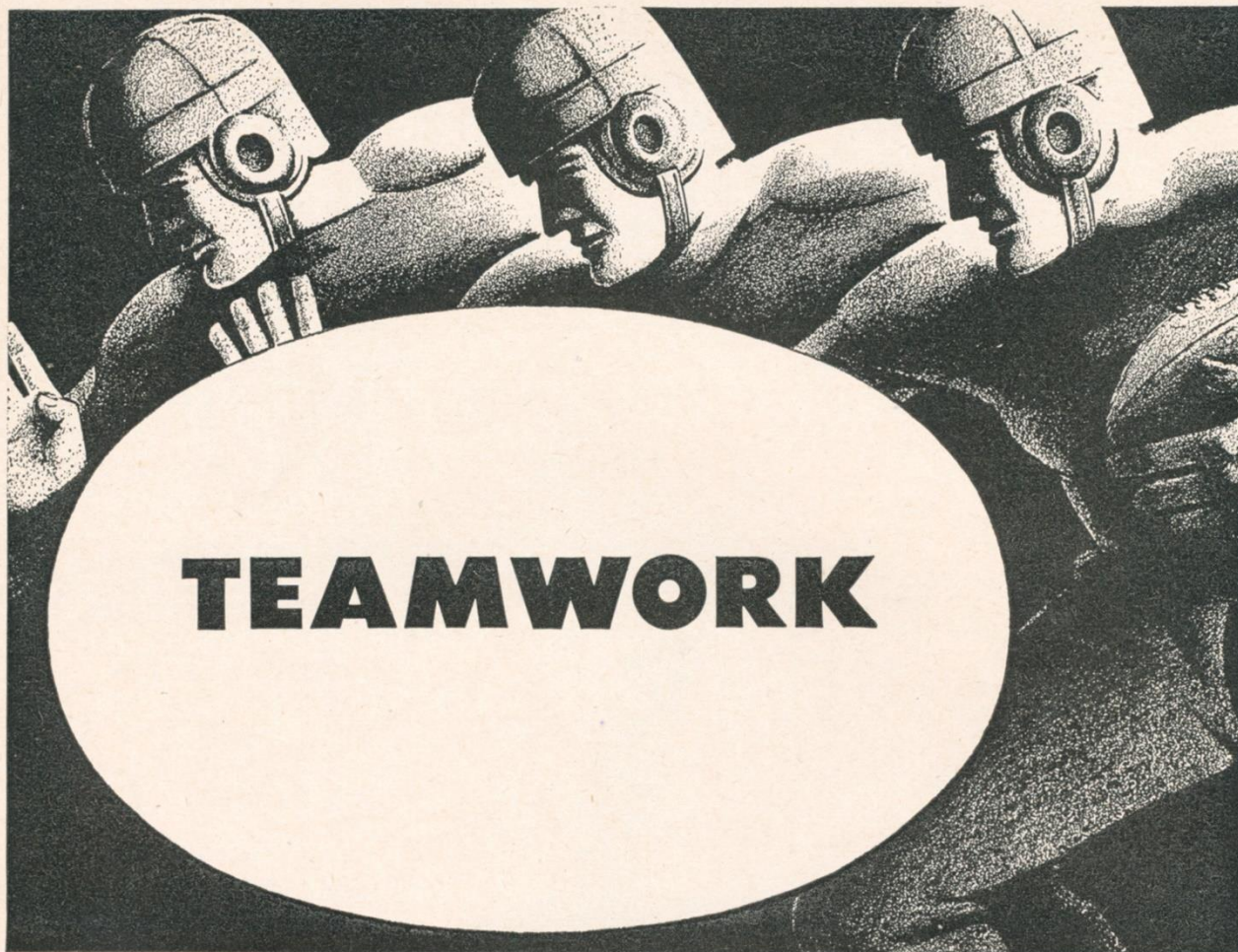
# WPEN

*The Sun Ray Drug Stations*

IN PHILADELPHIA

# WPEN-FM





# TEAMWORK

In the business world, as well as on the gridiron, teamwork often makes the difference between success and failure.

The experienced men in our Commercial Department will work with you as a team to arrange loans designed to help solve your problems in business finance.



## **FIDELITY-PHILADELPHIA TRUST COMPANY**

Organized 1866

BROAD AND WALNUT STREETS, PHILADELPHIA 9

Member Federal Reserve System

Member Federal Deposit Insurance Corporation



# FOOTBALL EQUIPMENT *for* CHAMPIONS!

*Worn by*  
**PHILADELPHIA EAGLES**  
*World's Champions — 1948*



*featuring*  
**RIDDELL**  
*Safety Suspension*  
**HELMETS**

*and*  
**RIDDELL**  
*Football*  
**SHOES**

The finest in football equipment for top-notch, championship performance.

The RIDDELL Safety Suspension Helmet is a superior example of thorough protection against head injuries.

RIDDELL football shoes provide that "snug-fit" comfort and footwork confidence for winning action on the gridiron.

distributed by

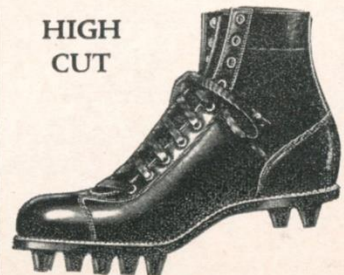
*Horace Partridge*

142 NORTH 13th STREET  
PHILADELPHIA 7, PA.

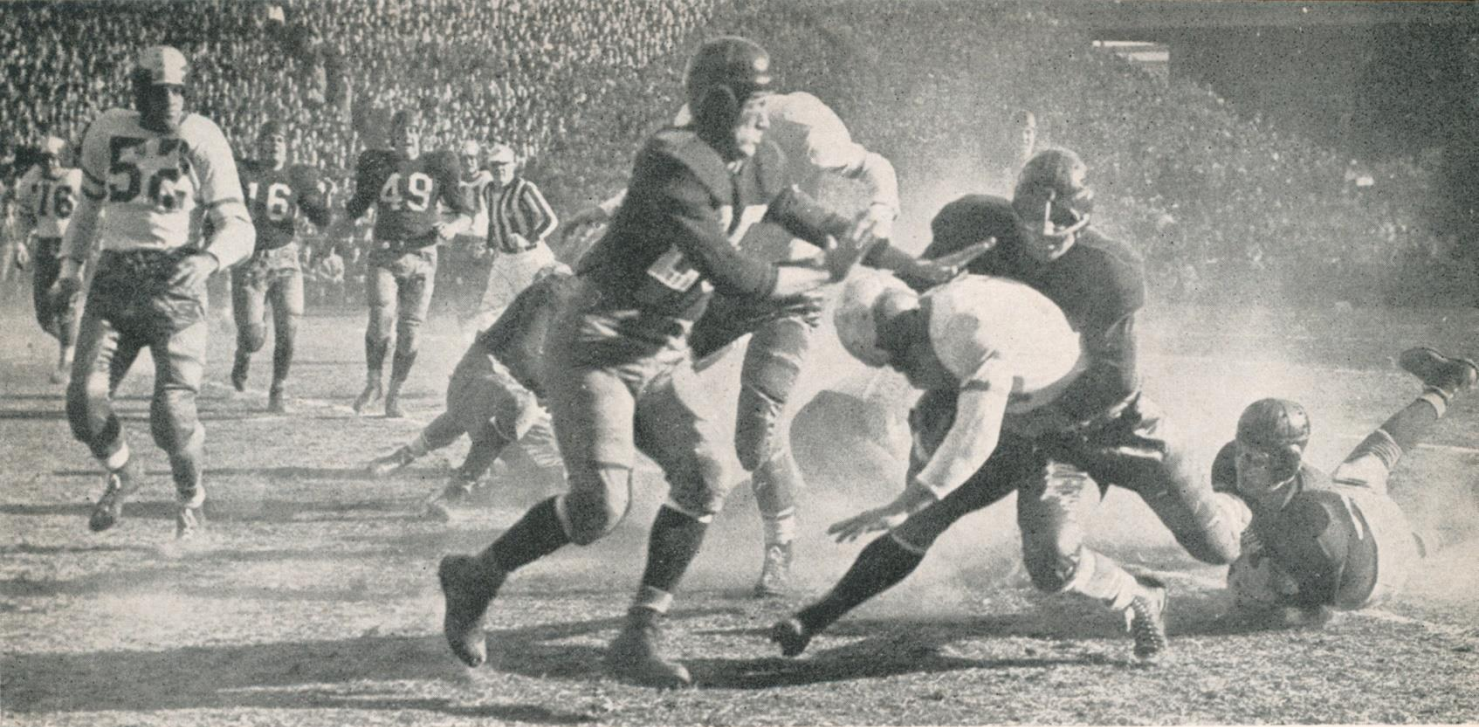
LOW  
CUT



HIGH  
CUT







**WORLD'S CHAMPIONS**

**PHILADELPHIA**

**VS**

**NEW YORK GIANTS**



**EAGLES**

**A** SET of six (6) souvenir programs for all the Eagles 1949 home games will make an excellent Christmas gift for some boy or girl. Programs contain autographed photos of the stars, action shots, thumbnail sketches, statistics and a wealth of information about the champions.

The complete set is available for \$1.00; single issues for 25c each.

Please send check, stamps or coin to:

The Philadelphia Eagles  
22 South 17th Street  
Philadelphia 3, Pa.

#### **CONTENTS**

In the Huddle .....	4
Seasons Greetings .....	5
Eagles Thumbnail Sketches .....	6 & 10
Eagles Players .....	7 & 11
Eagles Roster .....	9
Most Destructive Force in Football .....	13
Tips on Tommys Tossin' .....	14
Starting Line Ups .....	16 & 17
Giants Thumbnail Sketches .....	18, 21 & 22
Giant Players .....	19
Eagles Coaching Staff .....	20
Giants Roster .....	24
National League Schedule .....	26
Team Standings .....	27
National League Statistics .....	29
Notes from the Eagles Nest .....	31
NFL Roster of Officials .....	32
Previous Game Scores .....	33



# IN THE HUDDLE

by DEKE HOULGATE

**T**EN days before the League of Nations began its formal existence in Geneva, Switzerland . . . one week prior to the settlement of the terrible steel strike of 1919-1922 . . . exactly a month to a day after helium gas was first used in a dirigible, a young and comparatively unknown football coach startled the sports world by almost beating California's Wonder Team at Pasadena, California.

His lightly regarded Washington & Jefferson eleven did win a moral victory in old Tournament Park by coming up with a scoreless tie after having a touch-down called back. And his boys did play the Golden Bears to a standstill without taking a time-out or making a substitution.

Twenty-eight years later this same coach again stands at the top of the pigskin pile as the famed and feared skipper of the Philadelphia Eagles.

You've probably guessed by now that the man is Earle "Greasy" Neale!

Without fear of contradiction we can state that Greasy is the most successful coach over a longer span of years than any individual still active in the game and we would like to be the first to nominate him for football's new Hall of Fame . . . while he can enjoy the honor.

Neale coached at his alma mater, West Virginia Wesleyan, before going to the campus of the Presidents at Washington, Pennsylvania. He had also played major league baseball for the Cincinnati Reds. In both sports he was an immediate success because he seemed to sense athletic talent and once he located a star was able to get the most out of him.

As an assistant coach at Yale, Greasy was screened off from real public recognition, but not from approval by members of his profession. He had to wait for big time professional football to put the ultimate stamp of greatness upon him.

After winning the championship of the National Football League last year, he got the automatic assignment of facing the All-Stars in Chicago, a test that several other pro coaches in past years had flunked. He spanked the ex-college boys so badly last summer that several voices were raised in support of the suggestion that the game should be junked as too uneven.

Apparently headed for another national crown, Greasy goes right on winning, refusing to get "sot" in his ways. He adopts and adapts the best of modern formations and plays to his needs from week to week. His defenses are new and daring. Against one foe he will throw a nine man line. The next time out he will go orthodox. In a year when nearly all teams are pass crazy, he makes the most of a strong running game.

EARLE  
(GREASY)  
NEALE



Greasy is a first-class picker of football stars. He should know because he has seen some really good ones perform. Right now he commands, among others, the talents of Tommy Thompson, a top passer, Steve Van Buren, possibly the greatest running back in football history, Al Wister, a tackle's tackle, Chuck Bednarik, prize rookie center, and Clyde "Smackover" Scott, a back as dangerous as they come.

While Greasy was at Old Eli, Clint Frank and the fun loving Larry Kelley were helping to restore some of the old lustre . . . Franklin Roosevelt, a Harvard man, was denouncing such "marauding nations" as Japan, Germany and Italy and calling for a quarantine . . . fighting had just broken out between China and the Japanese . . . the Italians had grabbed Ethiopia . . . and John Steinbeck's "Grapes of Wrath" was a best seller.

Earle Neale is now in his ninth season as head coach of the Eagles but, to show you how time apparently marches on without brushing him aside, here are a few great names in the coaching profession and what they were doing back in Greasy's Eli days:

A young fellow from Centre College by the name of Matty Bell was just beginning to make a big reputation as coach at Southern Methodist . . . Frank Thomas had firmly established himself as a top man at Alabama, with two teams good enough to show in the Rose Bowl . . . John Bain "Jock" Sutherland was an institution at Pittsburgh, but a young one . . . Stub Allison could do no wrong at California . . . Howard Jones was having alumni trouble while staging a comeback at Southern California . . . Carnegie Tech was a powerful eastern contender under Howard Harpster and Chicago was getting ready to abandon football then taught by Clark Shaughnessy . . . Lou Little was fairly new around Columbia, but had a Rose Bowl win over Stanford under his belt and was the most popular mentor around New York . . . Cornell was about to fire veteran Gil Dobie and replace him with a modern man, Carl Snavely . . . Elmer Layden was Notre Dame's new coach and Dana Bible had just taken over at Texas . . . The rules changers were flirting with a number of ideas to offset the growing value of a good defense . . . Pop Warner had just advocated counting up first downs as a means of breaking ties . . . and Michigan was beginning to talk about getting a new coach.

That was midway in Greasy Neale's career!



"TO OUR FANS OUR HEARTFELT THANKS FOR YOUR LOYAL SUPPORT  
AND OUR SINCERE BEST WISHES FOR A MERRY CHRISTMAS AND  
A HAPPY AND PROSPEROUS NEW YEAR."

JAMES. P. CLARK  
President, Philadelphia Eagles



Alex Hopiechowsky

Cliff Patton

Neil Armstrong

Russ Craft

Fred Schumacher

Leo Skladany

Jim Parmelee

Tommy Thompson

Clyde Scott

Al Sears

Gail Ferrante

Bill Mackrides

Phil Douglas

Ben Kik

Duke Marone

Mike Jarmoluk

Mario Gammelli

Jay MacDowell

Vic Lindsay

Frank Kirby

Bosh Belfield

Walt Barnes

Dick Humbert

John Magee

Chuck Bednarek

George Sawitsky

Pat O'Neil

Larry Cabrelli

J X Reagan

Frank Ziegler

John Green

Joe Mihal

J Kelleson

Jack Myers

"Greasy" Neale

Steve Van Buren

Pat McLaughlin

Wm. McNeilly



# HIGH-FLYING EAGLES

**NEILL ARMSTRONG** . . . Slick pass catcher from Oklahoma Aggies . . . third year with Eagles . . . Deceptive motion much like Don Hutson . . . uses height (6 feet two inches) to best advantage . . . split starting left end assignments with Blackjack Ferrante . . . one of youngest players on team at 23 . . . fast and shifty . . . ran hurdles for Oklahoma A. & M. . . . makes his home in Tishomingo . . . married and father of husky boy.

**CHARLES BEDNARIK** . . . Chuck . . . from University of Pennsylvania . . . outstanding college player of the country last two years . . . Eagles' bonus pick . . . named to every All-American in 1947 and 1948 . . . 230 pounds and six feet three inches . . . extremely fast and agile . . . equally adept on offense and defense . . . performed all of Penn's punting chores . . . sought by every professional club in America . . . picked by Eagles' coach Greasy Neale as All-Star choice . . . particularly sharp on defense . . . intercepted seven forward passes in 1946 and six in 1947 . . . never known to make bad pass . . . married and makes his home with his parents in Bethlehem, Pa.

**JACK FERRANTE** . . . one of smartest pass catchers in game . . . back for seventh time in big leagues . . . caught 28 passes in 1948 for 444 yards and seven touchdowns . . . best day against Detroit snagging seven for three TD's and 184 yards . . . also product of Philadelphia sandlots . . . one of few players to make good in National League without benefit of college experience . . . in six years of pro ball has caught 100 passes for 1798 yards and 23 touchdowns and 138 points . . . successful salesman . . . married and father of two children.

**VIC LINDSKOG** . . . best offensive center in National League . . . sixth year with Eagles . . . All-America pivot on Stanford's 1941 Rose Bowl team . . . keen student of football particularly T formation . . . type to make successful coach . . . won Golden Gloves ring championship on West Coast . . . powerful physique . . . leads calisthenics . . . great down-field blocker . . . married and father of boy.

**JAY MAC DOWELL** . . . one of better defensive tackles in league . . . 215 pounds and six feet three inches tall . . . splits right tackle assignments with Al Wistert . . . also plays end on five-man line . . . fast for a big man and seldom fooled . . . third year with Eagles . . . works at insurance when he isn't playing football . . . from U. of Washington.

**BILL MACKRIDES** . . . Home town product . . . went west to make good at University of Nevada . . . third year with club for which he once acted as mascot . . . slick ball handler and deft passer . . . came through under terrific pressure in Bears' game of 1948 . . . Regular quarterback, Tommy Thompson, hurt in previous game . . . Mackrides started first professional game against club Eagles never had beaten . . . under miserable weather conditions quarterbacked Eagles to first victory over Bears.

**JOE MUHA** . . . leading punter in league . . . averaged 47.2 on 57 kicks . . . longest was 82 yards, a quick kick against New York . . . returns for fifth season with Eagles . . . his 1948 average best in League since 1942 . . . majored in civil engineering at V.M.I.

. . . now home designer in Los Angeles . . . Brother George star at Carnegie Tech . . . married and lives in South Pasadena, Calif.

**JIM PARMER** . . . sophomore from Oklahoma A. and M. . . . hard hitter and tackler . . . ground out 167 yards on 30 attempts at ball carrying for 5.6 average . . . scored three TD's . . . may be surprise of 1949 season.

**PETE PIHOS** . . . jumped 18th among pass receivers in 1947 to runner-up spot in 1948 . . . snagged 46 passes for total gain of 766 yards and 11 touchdowns . . . in two years with club totaled 69 passes caught, 1148 yards and 19 TD's . . . hard runner . . . likes game rough . . . knows how to use his 215 pounds . . . plays right end on offense and left end on defense . . . helps to back up line . . . probably most feared end in league by opposing coaches . . . won all-America honors at University of Indiana . . . studying law in off-season.

**BOSH PRITCHARD** . . . Mr. Outside . . . fast as whippet and just as agile . . . second best ball carrier on club . . . gained 517 yards on 117 tries . . . weighs but 163 . . . hard to tackle . . . fifth year with club . . . played at V.M.I. with Eagles' teammate Joe Muha . . . talented singer and disc jockey . . . has own radio show . . . scored eight touchdowns, six on runs . . . returned 24 punts for 282 yards . . . caught 27 passes for 252 yards and returned nine kickoffs for 249 . . . married former Kitty Lou Miller, daughter of Poss Miller, former Penn player . . . parents of baby boy.

*"Champions  
in our own right"*



- Complete BUICK service
- Always a fine selection of quality USED CARS
- Complete stock of BUICK PARTS & ACCESSORIES

**"SEE US FOR YOUR NEW BUICK"**

**BROAD STREET**

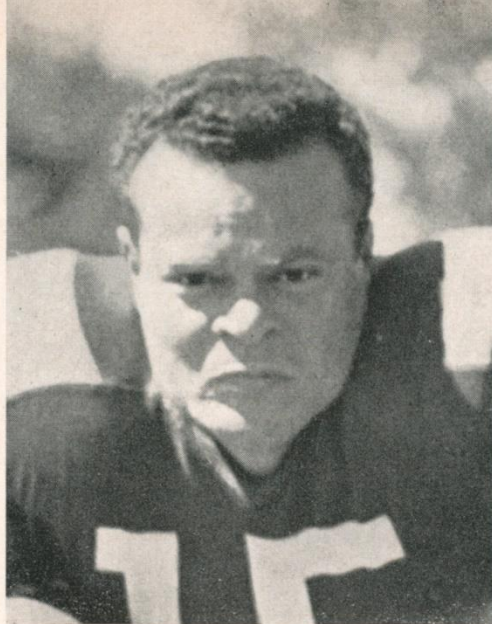
**Columbia, Montgomery Avenues**

**ST 2-4000**





53 AL WOJCIECHOWICZ C



15 STEVE VAN BUREN HB



35 PETE PIHOS E



65 CLIFF PATTON G

83 JACK FERRANTE E

# 1949 PHILADELPHIA EAGLES



75 GEORGE SAVITSKY T

36 JOE MUHA FB

27 CLYDE SCOTT HB

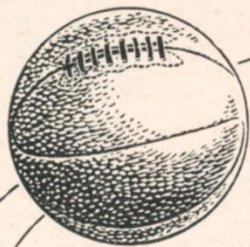
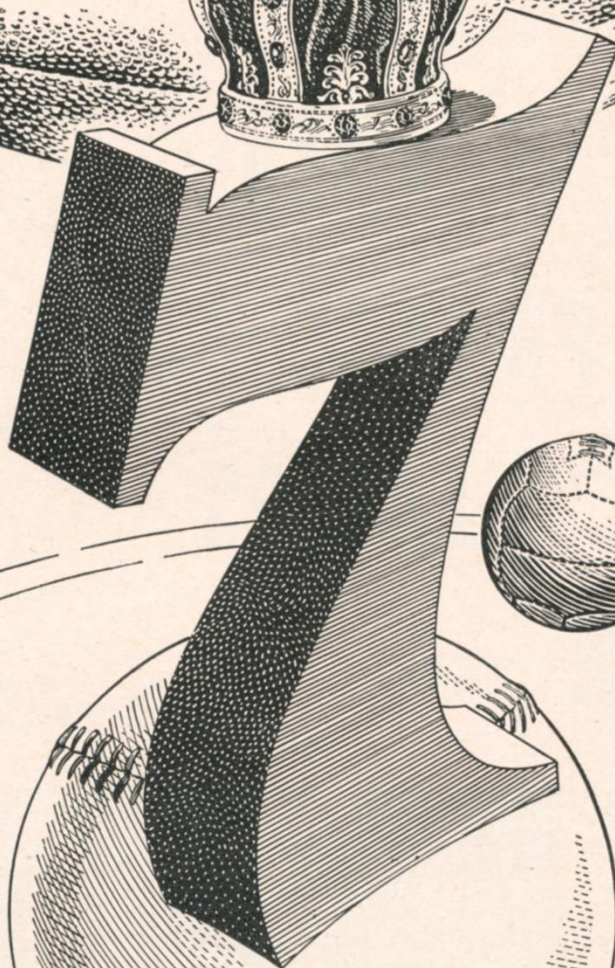




# Sure to be "on the ball"

Men who know the score are SURE to be 7 Crown rooters.  
They know that a drink made with Seagram's finest  
American whiskey is always SURE to be right on the ball!

*Say Seagram's* and be *Sure*







DRINK  
*Coca-Cola*

REG. U.S. PAT. OFF.

## PHILADELPHIA EAGLES

### 1949 ROSTER

No.	Name	Pos.	Wt.	Ht.	Age	College	Yrs. in N.F.L.
11	Thompson, Tommy . . .	QB	195	6:1	31	Tulsa	8
15	Van Buren, Steve . . .	HB	200	6:0½	28	Louisiana State	6
27	Scott, Clyde . . . . .	HB	175	6:0	25	Arkansas	1
30	Pritchard, Bosh . . . .	HB	163	5:11	28	V. M. I.	5
32	Myers, Jack . . . . .	FB	200	6:2	24	U. C. L. A.	2
33	Craft, Russ . . . . .	HB	172	5:9	28	Alabama	4
35	Pihos, Pete . . . . .	E	210	6:1	25	Indiana	3
36	Muha, Joe . . . . .	FB	205	6:1½	28	V. M. I.	4
39	Mackrides, Bill . . . .	QB	182	5:11½	24	Nevada	3
40	Reagan, Frank . . . . .	HB	180	5:11	30	Pennsylvania	5
41	Ziegler, Frank . . . . .	HB	175	5:11	25	Georgia Tech	1
43	Parmer, James . . . . .	HB	190	6:0	22	Okla. A. & M.	2
44	Kish, Ben . . . . .	FB	211	6:0	32	Pittsburgh	9
49	McHugh, Pat . . . . .	HB	165	5:11½	29	Georgia Tech	3
52	Lindskog, Vic . . . . .	C	200	6:1½	33	Stanford	6
53	Wojciechowicz, Al . . .	C	235	5:11½	34	Fordham	12
60	Bednarik, Chuck . . . .	C	230	6:3	24	Pennsylvania	1
61	Maronic, Duke . . . . .	G	205	5:11	27	None	6
64	Giannelli, Mario . . . .	G	265	6:0	28	Boston College	2
65	Patton, Cliff . . . . .	G	240	6:2	25	T. C. U.	4
67	Magee, John . . . . .	G	222	5:10	26	Rice	2
70	Wistert, Al . . . . .	T	218	6:1½	28	Michigan	7
74	Barnes, Walter . . . . .	G	241	6:1½	31	Louisiana State	2
75	Savitsky, George . . . .	T	242	6:2	25	Pennsylvania	2
76	Kilroy, Frank . . . . .	G	248	6:2	28	Temple	7
78	Jarmoluk, Mike . . . . .	T	240	6:5	26	Temple	4
79	Sears, Vic . . . . .	T	225	6:3½	30	Oregon State	9
80	Armstrong, Neill. . . .	E	186	6:2½	23	Okla. A. & M.	3
81	Humbert, Dick . . . . .	E	186	6:1½	30	Richmond	6
82	Skladany, Leo . . . . .	E	215	6:2	22	Pittsburgh	1
83	Ferrante, Jack . . . . .	E	205	6:1	32	None	7
88	MacDowell, Jay . . . .	T	222	6:2½	29	Washington	4

Head Coach . . Earle (Greasy) Neale  
Line Coach . . . . . John S. Kellison

End Coach . . . . . Larry Cabrelli  
Trainer . . . . . Otis Douglas

PHILADELPHIA COCA-COLA BOTTLING COMPANY



**JOHN PATTON** . . . Cliff . . . champion place-kicker . . . converted 60 straight extra points after touchdowns in two-year period . . . kicked 50 in row in 1948 . . . booted eight field goals in 12 attempts to 74 points—highest for team . . . Irish-Indian descent . . . father is sheriff of Clyde, Texas where Pattons own farm . . . Cliff joined Eagles mid-season of 1946 when picked up as free agent . . . eschewed promising baseball career to play pro football.

**GEORGE SAVITSKY** . . . Second year man from the University of Pennsylvania . . . understudied veteran Vic Sears . . . saw action in every game . . . born in New York but played high school football at Camden (N.J.) High School . . . first Penn player to take part in 32 consecutive games . . . also first Penn freshman to captain varsity team . . . participated in three East-West games . . . voted outstanding lineman of 1948 classic.

**CLYDE SCOTT** . . . Smackover . . . drafted by Eagles in 1947 . . . one of country's greatest all-round athletes . . . one of few to make All-American in football and Olympiad in track . . . finished close second to Bill Porter in Olympic hurdles final . . . in NC2-A meet (1947) ran 110-meter high hurdles in world record time of 13.7 . . . has run 100-yard dash in 9.4 . . . seemingly just as fast in football togs . . . made majority of All-America teams . . . and All-Southwest on every ballot . . . likened to Eagles' star, Steve Van Buren . . . runs hard and fast . . . married former "Miss Arkansas" Leslie Hampton . . . has two small children . . . outstanding at Navy and U. of Arkansas.

**VIC SEARS** . . . Oldest Eagle in point of continuous service . . . joined club in 1941 same year Head Coach Greasy Neale took over . . . 1949 season will be the ninth straight for Vic who entered professional football right off University of Oregon campus . . . missed only 14 minutes entire collegiate career.

**TOMMY THOMPSON** . . . leading passer of 1948 season . . . threw 246 passes, completed 141 for 1965 yards and 25 touchdowns . . . his percentage of completions was 57.3 . . . back for seventh season with Eagles . . . expert play caller . . . suffered shoulder separation on last play of first half of Washington game at Washington . . . played only few minutes of following game with Chicago Bears . . . returned to star in every subsequent game . . . hit peak in championship playoff with Cardinals . . . carried ball 11 times for 50 yards in snow . . . one of better golfers in Philadelphia amateur circles . . . Tulsa U. graduate.

**STEVE VAN BUREN** . . . greatest running back in America . . . holds marks for yards gained in one season (1008), attempts one season (217) and touchdowns one season (18) . . . slow starting last year but picked up in third game . . . made 171 yards against Washington for his best one-game effort . . . missed one complete game (Boston) and parts of two others but still gained 945 yards to lead the league in ball carrying for the third time in five years . . . scored 10 touchdowns running which was high for the league . . . natural athlete . . . could make good at any sport according to coaches . . . prone to underestimate own ability . . . married and makes his home in Pennfield, suburb of Philadelphia . . . starred at L. S. U.

**AL WISTERT** . . . Whitey . . . seventh season with Eagles . . . one of league's best tackles . . . weighs only 217 pounds but combines speed with charging power . . . smart and game wise . . . seldom makes a mistake . . . captained team last two years . . . Coach Neale gives Al credit for team's high morale . . . blocks while still on feet and his follow through motion is best in league . . . one of three Wistert brothers in football . . . Francis first at Michigan in 1931 and 1932 . . . Al in 1938-1942 and Alvin 1947, 1948 and 1949 . . . built up fine insurance clientele in Philadelphia . . . married and father of two daughters . . . now makes his home in Philadelphia.

**ALEX WOJCIECHOWICZ** . . . Wojie . . . 12 years in National League outranked in point of service only by Washington's Sammy Baugh now in his 13th year . . . spent eight and one third years with Detroit Lions . . . fourth year with Eagles . . . one of most popular players with Shibe Park fans . . . All-America with Fordham's Seven Blocks of Granite in 1937 . . . loves the game rough . . . two years all-state baseball catcher at South River (N.J.) High School . . . expert with knitting needles . . . married and father of four children . . . makes his home in Wanamassa, N.J.

**FRANK ZIEGLER** . . . one of two Georgia Tech stars with Eagles . . . Halfback Pat McHugh is the other . . . Ziegler played with the Yellow Jackets, 1946, '47 and '48 . . . Entered Tech in 1940 but left for service in spring of 1942 . . . Returned in 1946 and made the Tech second team . . . varsity fullback next two years . . . gained 278 yards on 63 attempts for Tech in 1948 and was tops in kickoff returns with 114 yards on six . . . weighs only 175 pounds.

*"Let's Go Philadelphia"*

## **HYGIENIC SANITATION CO.**

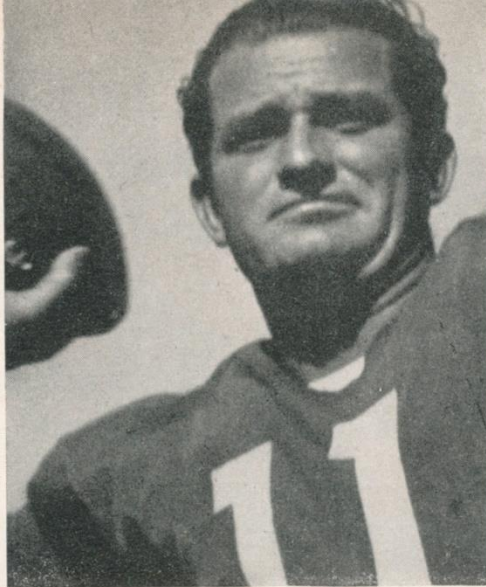
**Philadelphia, Harrisburg, Johnstown, Altoona,  
Washington, D. C., Cumberland, Md.**

**PENNSYLVANIA'S LARGEST EXTERMINATING ORGANIZATION**





49 PAT McHUGH HB



11 TOMMY THOMPSON QB



76 FRANK KILROY G



70 AL WISTERT T

88 JAY MACDOWELL T

# 1949 PHILADELPHIA EAGLES



41 FRANK ZIEGLER HB

30 BOSH PRITCHARD HB

60 CHUCK BEDNARIK C







# Who has the Strongest Football Lineup in PHILADELPHIA?

## We have— right at your fingertips.

During the football season, the WFIL stations will broadcast or televise a host of the Nation's outstanding gridiron contests. The top professional and college teams in the country are included in this all-star lineup of action-packed programs guaranteed to make the weekend the strong end of the week for any football fan.

*Here's the lineup which  
you—as a football fan—  
won't want to miss:*

•  
**NATIONAL FOOTBALL LEAGUE**  
*"Game of the Week"*  
**Sunday Afternoons on WFIL-TV**  
(When the Eagles are playing away dates)

•  
**UNIVERSITY OF PENNSYLVANIA**  
*Home Games*  
**Saturday Afternoons on WFIL**

•  
**NOTRE DAME and BIG TEN GAMES**  
**Saturday Afternoons on WFIL-TV**

•  
**"TOUCHDOWN"—Football Highlights  
of the Week, Fridays at 7:30 P.M.  
on WFIL-TV**

# WFIL

## 560

*First on your dial*

# WFIL-TV

*Channel 6*

The Philadelphia Inquirer Stations



This photo is typical of Steve Van Buren in action. Small wonder he possesses such nicknames as Wham Bam, Supersonic Steve, Weavin' Steven, Movin' Van, etc.

## **THE MOST DESTRUCTIVE FORCE IN FOOTBALL**

by STEVE SNIDER  
*United Press Sports Writer*

**P**ERHAPS there'll never be another Bronco Nagurski in football but the closest approach today is Steve Van Buren of the Philadelphia Eagles, a fabulous character in his own right.

At least the Bronk confined his savage assaults to his opponents during the years he was crushing bones for the Chicago Bears.

But Van Buren, who came up to the Eagles from Louisiana State six years ago, must be near-sighted. He can't see anything that gets in his way on a football field and ran over friend and foe alike as he led Philadelphia's National League champs into the East-West playoffs for the third straight year, setting an all-time rushing record in the process.

"We get more men hurt by Van Buren than by our opponents," moaned Coach Earle (Greasy) Neale, whose Eastern title holders have another whack today at the New York Giants before engaging in the championship playoff. "If he runs into anybody running interference for him, he puts the works to 'em. He has put two of our men on the shelf already."

Two votes for Van Buren as the hardest running back in football probably would be forthcoming from Jack Ferrante and Vic Lindskog, two Eagle "friends" who got in the way of Van Buren's forward progress this season and wound up with sidelining injuries.

Neale long has been a terrific Van Buren booster, once stepping out so far on a limb to call him a better



runner than Red Grange because he makes—or breaks—his own interference.

There isn't much doubt of his prowess. He already has cracked Nagurski's all-time rushing record in his sixth year of pro football. Against the Pittsburgh Steelers two weeks ago, he gained a yard for every pound of his hard rock weight—205—for his most spectacular day in pro football.

"He liked that," Neale said. "He figures he ought to gain 200 yards in every game. Against the Rams this year, he picked up 90 yards and was a tough man as usual but afterwards he roared into the locker room and said he ought to quit."

But the Bayou bombshell loves to run with the ball and he stayed around for more football as everyone knew he would.

Van Buren is a cinch to increase a career rushing record that'll stand for a long time. Every yard gained adds to his unbelievable mileage.

"He ought to be barred," said Steve Owen of the Giants.

Van Buren's running record is all the more remarkable because the Eagles operate out of a T formation generally considered to be more favorable for passing than rushing.

In the T, there is less interference for running backs but, as Greasy noted, that doesn't make much difference to the most destructive single force in football.



# TIPS ON TOMMY'S TOSSIN'

by TONY ZECCA

*International News Service Sports Writer*



**T**O hear Tommy Thompson tell it, anyone can be a good passer in football . . . *Almost*.

That *almost* is what narrows down the game's aerial artists to the likes of the Thompsons, Baughs, Lujacks and Conerlys.

First off, you've actually got to relish fading back—not out—from an onrushing horde of huskies bent upon smearing your profile into the turf, and then calmly be able to heave the pigskin for a bullseye, even as your feet are being swept from under you.

You've got to know when to pass, and what kind of pass to throw, he explains. Therein lies Tommy's forte. He knows he's got a couple other guys in the back-field—especially with the Eagles' juggernaut—with a streamroller in Steve Van Buren, and a souped up hot-rod in Bosh Pritchard.

Always banking on the surprise element—which he considers the most important element of strategy in the game—Tommy knows how to make the best use of his running backs to tighten up the defense, then cross them up by switching to the air.

The strapping, curly-topped number 11 from Tulsa explains he also capitalizes on the surprise element when the opposition is expecting a pass. If they are looking for a long one, he tosses a short one, and vice versa.

Tommy uses two types of forwards: the hard and sharp type—usually traveling less than 20 yards—and the long, soft, looping pass to cover maximum yardage. He also uses a different delivery for each.

In flipping the shorter pass, he throws overhand, cocking his arm with the ball above his ear and firing directly to the receiver, aiming about shoulder-high. When he heaves the long one, he lets it go side-arm, aiming the ball in an upward arc and twisting to give it a good spiral.

Tommy says it's much more difficult to throw the long ones, which are also more dangerous. When he lets go a long one, he must "lay" the ball to a certain spot—rather than pitch it directly to a man—so that the ball and the receiver will arrive there at the same time.

The Tulsa tosser uses the same grip in both deliveries, however, although it's quite unorthodox. Unlike most passers who hold their fingertips on the lace to get a firmer hold, he grips the ball more toward the end, without touching the lace. This makes the ball seem smaller to him, and gives him a better grip and spiral, he believes.

One of the main reasons for his success is knowing how to fade away from the line as fast as possible. If you notice, he does this without turning his head away from the field. That enables him to keep a steady watch on his deploying potential receivers from the time of the snap until he lets go of the ball.

Tommy's message to budding passers is that they learn to throw the ball running backwards, or off balance. And, above all, a passer shouldn't "wind-up" or get set. Passing a ball, he says, is comparable to a

baseball pitcher who has a man on first base. He advises would-be aerial artists to learn to fire the ball automatically from any position. A hop, or wind-up wastes precious seconds.

In fading, Tommy tries to stay in the pocket behind the center of the line. He should. He's got nearly three-quarters of a ton of beef in front of him to hold back the center of the opposition forward wall. The pocket gives you the best protection because the flanks are weaker, with incoming ends.

Every second counts in passing, he explains. The ball should be taken from the center in the passing grip. Fade back quickly, plant your right foot down, and push off of it for leverage as you fire.

The formula sounds easy. The practice makes perfect . . . nearly. Once you are able to throw the ball by instinct, he explains, you can develop the fine points of knowing when to call a pass play, and what kind to throw.

Always keep in mind the surprise element, he stresses. Ideal conditions—depending on the game—might be first down and 10 to go, or second and one, and even third and one. Usually, he points out, it's best to throw one any time when it's possible to pick up a first down on the next play if the pass doesn't click.

When the pass itself isn't being thrown as a surprise, like on third and 10, or first and 15, and the opposition is looking for a long heave, that's the time to cross them up with a short screen pass. If this connects, the receiver may have a wide-open field, because the defense has been spread out, expecting a long throw. Tommy believes that passing has been the prime influence in jazzing up the game, and with the increased use of the "T" formation, it has been speeded up even more.

You can't beat it as an offensive weapon, according to the Eagle ace. It's even an offensive threat when not being used. For example, on third and 10, when the opposition is expecting him to throw one, he'll let them believe it, and fade back for a pass. But while they deploy for the aerial, he'll hand the ball off for a running play.

However, Tommy warns that as lightning an offensive as the passing game may be, it can provide just as powerful a boomerang in the event of an interception. Tommy thinks a team's chances for victory are almost nil if it has three passes intercepted in one game. Not only do the interceptions cost you yardage, but they're demoralizing to your team.

And with all this, he still maintains that almost anyone can be a good passer in football. Well, maybe . . . if his name is also Tommy Thompson.



# MEET CAPT. AL. WISTERT & JAY MacDOWELL

IN PERSON

ALL AMERICAN PERFORMERS ON ANY FOOTBALL FIELD; AND TOP-FLIGHT LIFE INSURANCE MEN.

*They will serve you personally as they have many other families—  
—Among these the following:*



Capt. Al Wistert

Edward C. Buurma  
Public Relations—R.C.A.  
Sam Framo  
Phila. Shrimp King  
Edson Hagenbucher  
Tavern Owner  
James C. Hannes  
Old Falls Tavern  
Charles Lenz  
Trucking  
Victor Lindskog  
Eagles' Center  
Robert W. Peterson  
Electrical Appliances  
"Bosh" Pritchard  
Eagles' Half Back



Jay MacDowell

## THEY SERVE:

The Small Estate Owner  
The Large Estate Owner  
The Medium Estate Owner

The Professional Man  
The Man On His Way Up  
The Business Man

## WITHOUT CHARGE

by

Asset Analysis

Business Analysis

Policy Analysis

Of Course They Sell Life Insurance! But Only If You Need It—Want It—And Can Afford It!

Send In The Coupon Below Or Phone Their Office—Locust 4-1080—They Will Give All Inquiries  
Their Personal Attention.

Mail To:

BANKERS LIFE INSURANCE CO. OF NEBRASKA  
1529 WALNUT STREET  
PHILADELPHIA 2, PA.

Your Name .....

Address .....

Telephone .....



# PHILADELPHIA EAGLES SQUAD

LT	LG	C	RG	RT
Sears 79	Patton 65	Lindskog 52	Kilroy 76	Wistert 70
Savitsky 75	Giannelli 64	Wojciechowicz 53	Barnes 74	MacDowell 88
	Magee 67	Bednarik 60	Maronic 61	Jarmoluk 78

**LE**  
Ferrante  
83  
Armstrong  
80  
Skladany  
82

**RE**  
Pihos  
35  
Humbert  
81

**LHB**  
Van Buren  
15  
Ziegler  
41  
Craft  
33  
Reagan  
40

**QB**  
Thompson  
11  
Mackrides  
39

**FB**  
Muha  
36  
Myers  
32  
Kish  
44

**RHB**  
Pritchard  
30  
Parmer  
43  
McHugh  
49  
Scott  
27

28

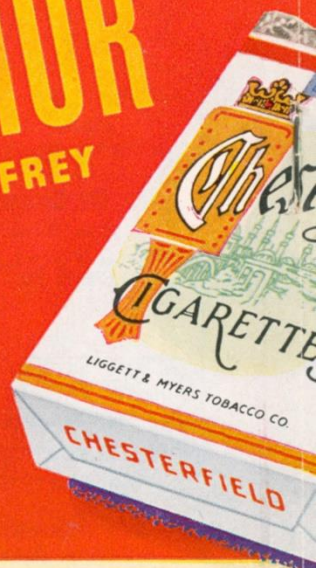
CHESTERFIELD  
RADIO AND TELEVISION

"Smoke Out"  
**Always Buy**



**ARTHUR**  
GODFREY

ARTHUR GODFREY—Next-door neighbor  
to 90 million people! You look at him—  
listen to him—laugh with him and love him!



ALL CBS RADIO AND TELEVISION STATIONS

**MILDER CHESTERFIELD**



LD'S BIG THREE  
VISION STARS SAY...

UR cigarette  
"Chesterfield"

**B**ING  
CROSBY

BING CROSBY—Through his records,  
his movies, and his radio programs,  
Bing has brought more pleasure to more  
people than any other living man.

ALL CBS RADIO STATIONS



**PERRY**

PERRY COMO—Now in his seventh year as  
Chesterfield's great radio and recording star. Today, millions  
acclaim him as television's greatest singing star.

ALL NBC RADIO AND TELEVISION STATIONS

# NEW YORK GIANTS SQUAD

LT	LG	C	RG	RT
White 77	Butkus 62	Coulter 79	Royston 61	De Rogatis 78
Hutchinson 71	Ettinger 74	Cannady 52	Baker 76	Austin 75
Sanchez 70	Colhouer 63			Kolman 72

**LE**  
Swiacki  
81  
Duden  
87  
Lo Vuolo  
89  
Agajanian  
8

**RE**  
Poole  
82  
Kershaw  
86  
Hensley  
85

**LHB**  
Roberts  
35  
Tunnell  
45  
Salscheider  
40

**QB**  
Conerly  
42  
Mallouf  
22  
Coates  
49

**FB**  
Greenhalgh  
12  
Mertes  
34  
Sulaitis  
21

**RHB**  
Scott  
30  
Mullins  
20  
Fischer  
37

**C**OMO

**Largest selling cigarette in America's Colleges**

(BY LATEST NATIONAL SURVEY)



# TERMINAL CHEVROLET COMPANY

7027 WESTCHESTER PIKE, UPPER DARBY

COMPLETE



Only One-Half Block from 69 St. Terminal—AL-4-4641-Boulevard 1998

## GIANT JOTTINGS

**WILLIAM AUSTIN** . . . Despite Bill's youth he has behind him 4 years' experience as regular tackle for Oregon State in the tough Pacific Coast Conference. Agile for a big boy and able to play either tackle slot equally well. Bill capped his collegiate career by starting at tackle for the West and playing a standout role in this year's Shrine game at San Francisco. Single—home town, Woodburn, Oregon.

**JOHN CANNADY** . . . In this, his 3rd season with the Giants, Big John qualifies as a real veteran and pro. Rough, durable, a savage line backer, John quickly made the grade as Giant pivot man and is one of the league's top centers. Has also played the back field both for the Giants and at Indiana. Single. Home in Charleston, South Carolina.

**CHARLES CONERLY** . . . Extravagant claims have been made for Charley Conerly in this his second year with the Giants. They are based on his remarkable achievements. In his senior year (1947) the lad from the cotton country led the nation's collegiate forward passers with record-breaking feats. He won the coveted honor of "Rookie of the Year" in 1948. Charley practically rewrote the Giants' record book for single season achievements. In 1947 Conerly smashed all collegiate marks, completing 133 out of 233 passes for 1367 yards and 18 touchdowns. In addition, carried ball 104 times for a rushing average of 4 yards per try. He also was a top level kicker. Conerly's 1948 record—attempts 299, completions 162. Percentage of completions .542.

Yards gained 2175. Touchdowns 22. Interceptions 4.3%.

**DEWITT COULTER** . . . Rated West Point's greatest all time tackle, this almost unanimous All-American of 1945 returns for his 4th season with the Giants as their new offensive center. The change to center was made during the preceding season and big Tex quickly showed unusual offensive strength at the position. With Cannady on defense and Coulter on offense the Giant pivot duties are in large and capable hands. Married. 1 child. Home in Fort Worth, Texas.

**AL DE ROGATIS** . . . One of the nations leading college tackles last season. Big, strong and rough. All-Southern selection. Many All-American honors, including first team All-American as chosen by the players themselves. Started for East in last New Years' Day Shrine game in San Francisco and made excellent impression on professional scouts. Single. A local boy. Al makes his home in Newark, New Jersey.

**DON (Red) ETTINGER** . . . One of the freshman "finds" of the league last year Red, as a rookie, was selected on several All-League teams. A throw back to the 'rock em and sock em' days, he's just a guy who likes to play football and the harder the hitting, the better. Has played fullback tackle, center and guard. Still has the speed of a back and should be even better this fall. Married, 2 children. Home in Sunflower, Kansas.

## FOR BETTER FRANKFURTERS

BUY —

FAMOUS  
FOR QUALITY

Sold exclusively at SHIBE PARK





BILL SWIACKI



TEX COULTER

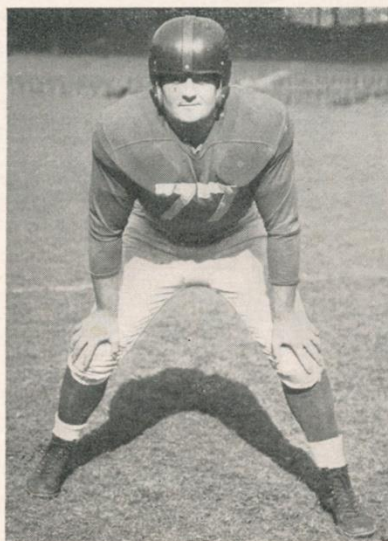


DON ETTINGER

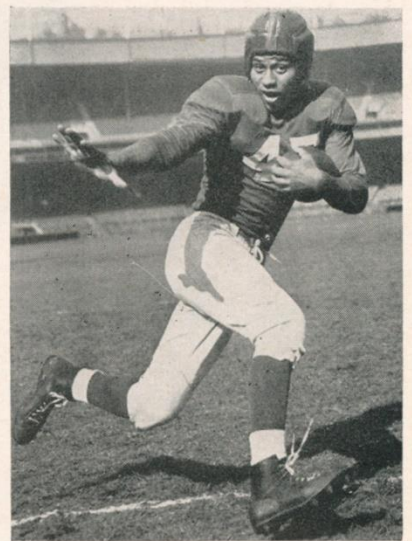
# ***NEW YORK GIANTS***



GENE ROBERTS



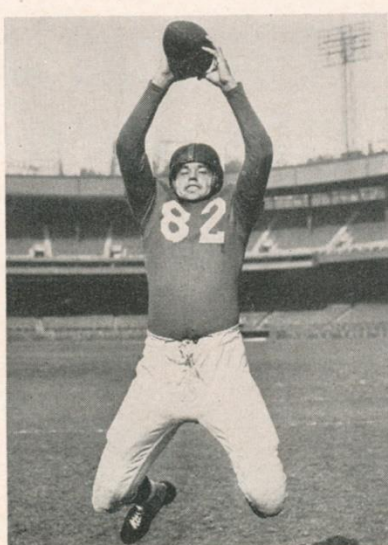
CAPTAIN JIM WHITE



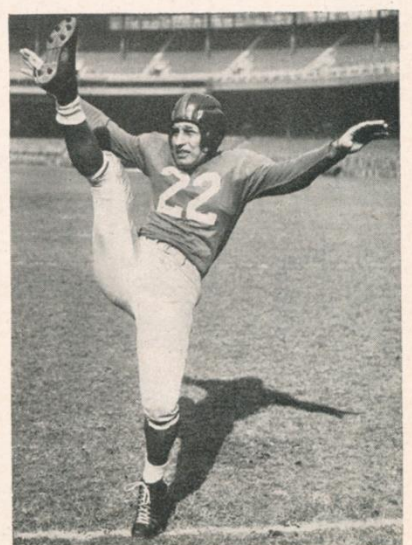
EMLLEN TUNNELL



BOB GREENHALGH



RAY POOLE

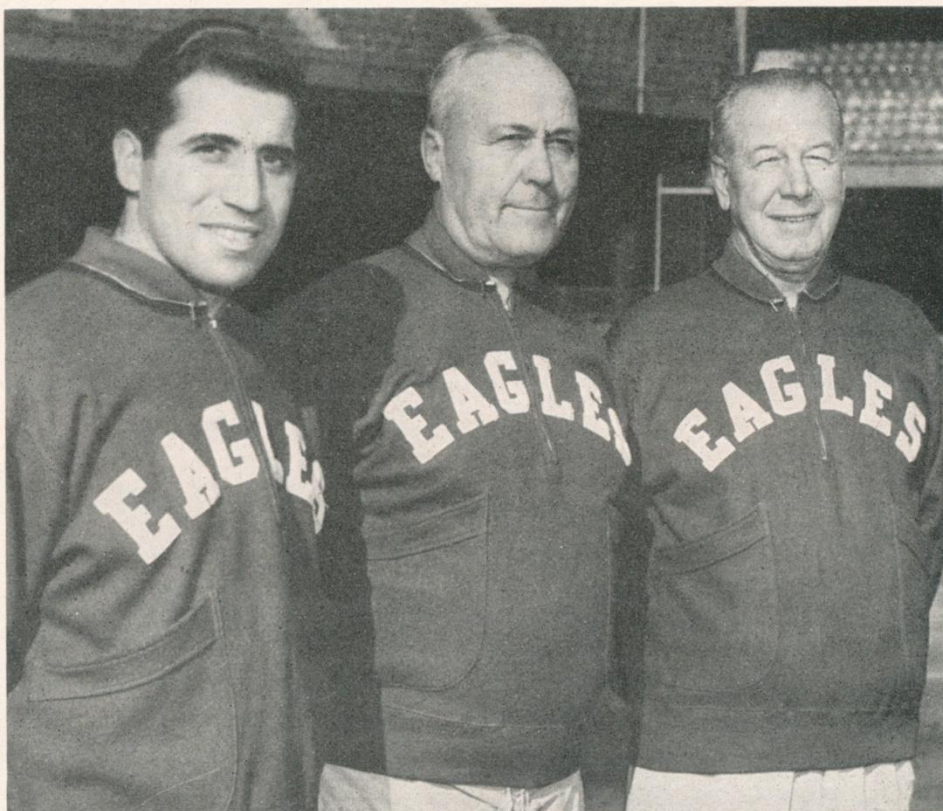


RAY MALLOUF



PHILADELPHIA EAGLES  
COACHING STAFF

The men who guided the Eagles to their Eastern Championship in 1947 and the World Championship in 1948. Left to right, LARRY CABRELLI, end coach; JOHN KELLISON, line coach; EARLE NEALE, ninth year as head coach for the Eagles.



# *The* **PENN SHERATON** *Hotel*

39<sup>TH</sup> And CHESTNUT STREETS

Home of the World Champion Eagles  
offers complete facilities for

- WEDDINGS AND RECEPTIONS
- CARD PARTIES — BANQUETS
- BUSINESS MEETINGS
- UNRESTRICTED PARKING

*Accommodating*

600 for Banquets

1500 for Dances

**Penn Sheraton  
Hotel**



THE HALLMARK OF HOSPITALITY

Transient and Permanent  
Accommodations





## GIANT JOTTINGS

**CLETUS FISCHER** . . . A speed boy scatback from Nebraska. Cletus is one of the major Giant acquisitions this year, operating out of left halfback in the T. In addition to his breakaway talents he ranks as one of the top defensive backs to come out of college football this year. Single—home in St. Edward, Nebraska.

**ROBERT GREENHALGH** . . . Bob was regular freshman fullback at Notre Dame in 1942. After service he transferred to San Francisco where pre-season injuries hampered him and prevented his realizing the promise he has always shown. A powerful bull-like plunger—hard blocker and tackler, Bob could be the answer to any team's need. In top form could make any pro team. Reunited now with his college teammate Joe Scott. Home—San Francisco, California.

**RALPH HUTCHINSON** . . . "Hutch" has been known for the past two seasons as one of the South's best tackles. Chattanooga, year in and year out, meets such teams as Georgia, Tennessee, Kentucky and Mississippi and therefore his reputation has been earned against the hardest type of competition. Has tremendous amount of speed. Was a first team Little All-American selection by the Associated Press last season. Played a fine game for the South in the Blue Gray game at Birmingham last Christmas. Married—one child. Home—Silas, Alabama.

**GEORGE KERSHAW** . . . Kershaw is an end who began his collegiate career as a back under Andy Kerr. However, his size soon marked him as ideal for the crashing end type and it was at end that "Jim" spent his last 2 years at Colgate. Although the Red Raiders did little passing it is noteworthy that in last Christmas' North-South game at Miami, Florida, Kershaw caught 4 passes in addition to showing his usual defensive skill. Single and makes his home in Oneonta, N. Y.

**RAY POOLE** . . . Ray, in his 3rd season with the Giants appears destined to be one of their great all

around end performers. Playing a particularly sturdy defensive game, last season he caught 35 passes for 492 yards and 3 touchdowns, a really great offensive season. His 9 passes caught against Pittsburgh ranks as the all time Giant record for receptions in a single game. Single. Home in Gloster, Miss.

**ED ROYSTON** . . . Another sophomore lineman who made the grade last fall. Came to Giants from the Cards labelled one of the best collegiate linemen of 1947. Played good hard football of the Giants over the last half of the season. Had usual rookie troubles but stood up under them and profited by them. Married. Home in Baltimore, Md.

**JACK SALSCHIEDER** . . . Jack carried 99 times last season for a total of 917 yards and a 9.3 yd. average per try. In addition to this remarkable performance, he proved himself a really great kicker in averaging 43.8 yards over the entire season. His feats sparked St. Thomas to a Cigar Bowl bid and brought Jack a berth on the Associated Press first team Little All-American. Married and makes his home in St. Paul, Minnesota.

**JOE SCOTT** . . . Here is another of the '48 Giant rookies who showed tremendous promise and is an experienced back this season. Led the league last year in kick off returns carrying 20 back for 569 yards and 1 touchdown. Also scored 4 other touchdowns, rushed for 198 yards and caught 17 passes for 235 yards. Combines speed, strength and ruggedness, a hard runner with a great feint and change of pace. Showed to great advantage on defense in several games last year. Married. Home in Murchison, Texas.

**JOE SULAITIS** . . . This is Joe's sixth season with the Giants. Big, strong and willing, he has performed in every backfield position as well as at end. The important thing is that wherever he is played Joe never fails to do a good job. Always rated a good receiver. Married, 1 child. Home in Rutherford, New Jersey.



**The CHEX girl says:**  
**"A PERFECT DEFENSE**  
**AGAINST THE**  
**GREATEST OFFENSE...**  
**BAD BREATH!"**



*Delicious*

✓ SWEETEN THE BREATH  
 ✓ CLEAN THE TASTE  
 ✓ AID DIGESTION

ON SALE AT SHIBE PARK REFRESHMENT STANDS

**BEER**  
**AS BEER**  
**SHOULD**  
**BE**

**Schmidt's**  
 OF PHILADELPHIA  
**BEER - ALE**

© 1949 C. SCHMIDT & SONS, INC., PHILADELPHIA, PA.

## GIANT JOTTINGS

**BILL SWIACKI . . .** Everything they said about Bill in Columbia is true. Coming to the Giants with a phenomenally spectacular collegiate career behind him, Bill proceeded to show the pro league how he did it. He finished the season 5th among the league's pass receivers. His 39 catches set a new Giant record for a single season. He made them good for 550 yards and 10 touchdowns. Teamed beautifully with Conerly to form the greatest new battery to hit the league in years. Unanimous All-American in 1947 and known to all football fans as the master of "impossible" catches. He backs up his spectacular qualities with serious hard working practice performances. Single. Home in South-bridge, Mass.

**EMLEN TUNNELL . . .** Another sophomore, Em proved himself last year as one of the more reliable of the many rookies. The sensation of last fall's training camp, Tunnell shows that he may be the best defensive half back to move into the Giant picture since Ward Cuff. Certainly in the Green Bay game last year Em played the finest defensive game a Giant has played since Cuff's time. Home in Garret Hill, Pa.

**JIM WHITE . . .** An All League selection in his first year of pro football in 1946, Jim is now a 4 year man with the Giants and their new field leader. All American in 1943, he is one of Notre Dame's great all time tackles. The new Giant captain is looking forward to his new responsibilities and hopes to lead a championship eleven next year.

## HOTELS PATRONIZED BY THE EAGLES

EAGLE HEADQUARTERS  
 in NEW YORK CITY

### HOTEL CONCOURSE PLAZA

Grand Concourse and 161st Street  
 A few short blocks from Polo  
 Grounds and Yankee Stadium.

under same management

### HOTEL MARTINIQUE

32nd Street at Broadway  
 1 block from Penn Station  
 Subway direct to Polo Grounds

### THE SHOREHAM

WASHINGTON, D. C.

L. GARDNER MOORE, MGR.

Washington Home of the Eagles

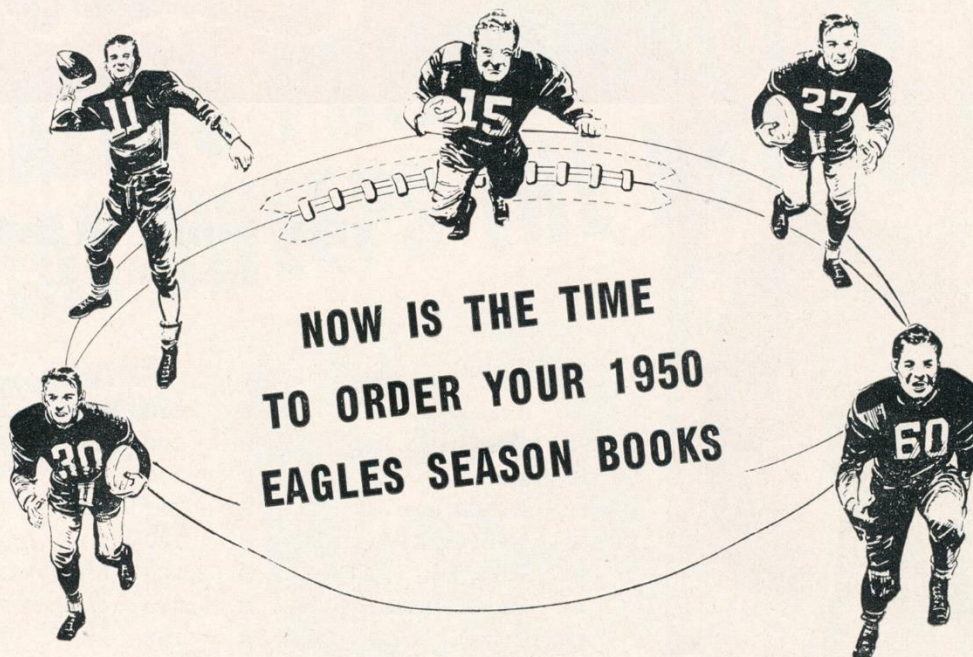
CHICAGO HOME OF  
 THE PHILADELPHIA EAGLES

### DEL PRADO

### HOTEL



# The EASY Way to Shop for Christmas



**Assure yourself a choice seat for all games!**

**See Football's greatest Stars in Action!**

● Don't miss the big games in 1950 . . . fill out and mail the application today! A \$10.00 deposit will reserve your seat in a desirable location. Your preference as to location will be considered in the order of receipt of application, after old fans' renewals have been filled.

**HERE'S AN IDEAL CHRISTMAS GIFT!  
A GIFT ENJOYED THROUGHOUT THE YEAR!**

Give your friends the opportunity to see all of the big games, too . . . give them Christmas gift certificates, made out in their names.

Use the coupon to indicate the number of Christmas Gift Certificates you desire. Before Christmas, we will send you a gift certificate for each, so that you can fill in name and address of each recipient.

**Send This Coupon Today . . . For 1950 Season Tickets and Christmas Gift Certificates!**

The Philadelphia Eagles, Inc.  
22 S. 17th Street  
Philadelphia 3, Pa.

Enclosed is my deposit of \$..... (ten dollars per ticket) covering my application for:

..... 1950 Season Tickets  
(No. of books)

..... Christmas Gift Certificates, for  
(No. of books) 1950 Season Tickets

Preferred location .....  
(1st choice) (2nd choice)

Name .....  
(Please print)

Address .....  
(Street)

.....  
(City) (Zone) (State)

Phone number .....

NOTE: A \$10.00 deposit required on each Season Ticket or Christmas Gift Certificate ordered.  
Make checks payable to: "Philadelphia Eagles".

**THE PHILADELPHIA EAGLES, INC.**

**22 S. 17th STREET**



**PHILADELPHIA 3, PENNA.**



DRINK  
*Coca-Cola*

REG. U.S. PAT. OFF.

## NEW YORK GIANTS

1949 ROSTER

No.	Name	Pos.	Wt.	Ht.	Age	College	Yrs. in N.F.L.
8	Agajanian, Ben . . . . .	E	210	6:0	30	New Mexico	2
12	Greenhalgh, Bob . . . . .	B	200	6:1	25	San Francisco	1
20	Mullins, Noah . . . . .	B	177	5:11	30	Kentucky	3
21	Sulaitis, Joe . . . . .	B	215	6:2	28	Dickinson H.S.	6
22	Mallouf, Ray . . . . .	B	180	5:11	31	S. M. U.	5
30	Scott, Joe . . . . .	B	200	6:1	23	San Francisco	2
34	Mertes, Bernard . . . . .	B	200	6:0	28	Iowa	1
35	Roberts, Gene . . . . .	B	188	5:11	25	Chattanooga	3
37	Fischer, Cletus . . . . .	B	170	5:9	24	Nebraska	1
40	Salscheider, Jack . . . . .	B	185	5:10	24	St. Thomas	1
42	Conerly, Charles . . . . .	B	185	6:1	25	Mississippi	2
45	Tunnell, Emlen . . . . .	B	187	6:1	24	Iowa	2
49	Coates, Ray . . . . .	B	200	6:1	25	Louisiana State	2
52	Cannady, John . . . . .	C	225	6:2	25	Indiana	3
61	Royston, Ed . . . . .	G	220	6:1	26	Wake Forest	2
62	Butkus, Carl . . . . .	T	245	6:1	27	Geo. Washington	1
63	Colhouer, J. C. . . . .	G	210	6:1	27	Oklahoma	4
70	Sanchez, John . . . . .	T	241	6:3	28	San Francisco	3
71	Hutchinson, Ralph . . . . .	T	230	6:2	24	Chattanooga	1
72	Kolman, Ed . . . . .	T	235	6:2	31	Temple	7
74	Ettinger, Don . . . . .	G	215	6:2	26	Kansas	2
75	Austin, William . . . . .	T	218	6:1	21	Oregon State	1
76	Baker, John . . . . .	G	210	6:2	26	California	1
77	White, James . . . . .	T	225	6:2	28	Notre Dame	4
78	De Rogatis, Al . . . . .	T	235	6:4	22	Duke	1
79	Coulter, Dewitt . . . . .	C	245	6:4	24	West Point	4
81	Swiacki, Bill . . . . .	E	195	6:2	24	Columbia	2
82	Poole, Ray . . . . .	E	215	6:2	27	Mississippi	3
85	Hensley, Richard . . . . .	E	210	6:4	21	Kentucky	1
86	Kershaw, George . . . . .	E	225	6:3	22	Colgate	1
87	Duden, Dick . . . . .	E	212	6:3	24	Navy	1
89	Lo Vuolo, Frank . . . . .	E	210	6:2	25	St. Bonaventure	1

Head Coach . . . . . Steve Owen  
Line Coach . . Richard (Red) Smith

Backfield Coach . . . . Al Sherman  
End Coach . . . . . Jim Lee Howell

PHILADELPHIA COCA-COLA BOTTLING COMPANY



★ ★ ★ ★  
EPOCH MAKING NEW  
TRIUMPHS HERE FROM  
PHILCO LABORATORIES

# 1950 TELEVISION NEWS

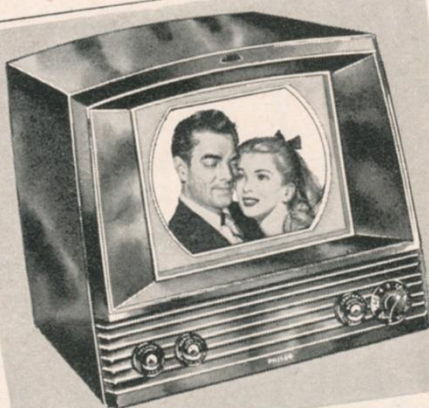
★ ★ ★ ★  
PHILCO RESEARCH NOW  
OBSOLETE OUTDOOR  
AND INDOOR TV AERIALS

## AMAZING PHILCO BUILT-IN AERIAL SWEEPS THE NATION!

### PHILCO SUPER-POWER FOR FINEST PERFORMANCE IN ALL LOCATIONS

Yes, the amazing performance of 1950 Philco television with Built-In Aerial depends on a new super-power circuit with vast increase in sensitivity, plus new exclusive features.

Pictures are not only bigger but better . . . with finer contrast and greater clarity. Famous Philco Wide-Screen gives the utmost in enjoyment for the price you pay. New Philco High Gain Auto-Selector tunes all 12 Stations And



AERIAL BUILT-IN and completely concealed in the cabinet. New Philco super-sensitive television circuit gives you sharper, clearer pictures ever on big 61 square inch screen. High Gain Automatic Station Selector tunes all 12 television channels. Distinctive Mahogany plastic cabinet.

MODEL 1104  
**\$229.95**  
See and  
hear

### AMERICA'S BUYERS HAIL "PLUG IN AND PLAY" TELEVISION

No Aerial of Any Kind Needed  
on the Roof or on the Set . . .  
No Installation Cost!

Philco research has put the television aerial *inside the cabinet* — completely out of sight! It's hailed everywhere as the television invention of the year . . . the Philco Electronic Built-In Aerial System. Far more than an aerial alone, this newest Philco advance is a complete *electronic system* with a simple control that tunes it to any station.

In up to 8 out of 10 locations  
No Aerial Needed

TELEVISION COMBINATIONS  
See and hear

# It's Headline News

## IN TELEVISION EVERYWHERE

**Y**ES, 1950 Philco television with the Electronic Built-In Aerial System is the big news in the industry today . . . another triumph of Philco pioneering research! For now, in up to 8 out of 10 locations no aerial of any kind needed on the roof or on the set . . . no installation cost . . . *just plug in and play!* It's an amazing advance!

And even in weak signal locations requiring an outside aerial . . . *yes, even where others may fail . . .* Philco's new super-power circuits give you the finest possible performance from the available signal, with a *new high* in picture sharpness and clarity. See all the new Philco models now on display at your Philco dealer. *Order now for Christmas!*

**PHILCO** *Famous for Quality the World Over*



# THE ONE...AND ONLY WHISKY

that gives you all three!



# Old Classic

A BLEND OF STRAIGHT WHISKIES FOUR YEARS OLD  
86 PROOF • CONTINENTAL DISTILLING CORPORATION  
PHILADELPHIA, PENNSYLVANIA

## 1949 National Football League Schedule

DATE	CLUBS	SCORES
Sept. 22	Philadelphia at N. Y. Bulldogs (N)	7-0
Sept. 23	Detroit at Los Angeles (N)	24-27
Sept. 25	Chi. Bears at Green Bay	17-0
" "	N. Y. Giants at Pittsburgh	7-28
Sept. 26	Washington at Chi. Cards (N)	7-38
Sept. 30	N. Y. Giants at N. Y. Bulldogs (N)	38-14
Oct. 2	Chi. Bears at Chi. Cards	17-7
" "	Los Angeles at Green Bay	48-7
Oct. 3	Philadelphia at Detroit (N)	22-14
" "	Washington at Pittsburgh (N)	27-14
Oct. 7	Green Bay at New York Bulldogs	19-0
Oct. 8	Detroit at Pittsburgh	7-14
" "	Chicago Cards at Philadelphia	3-28
Oct. 9	Los Angeles at Chicago Bears	31-16
" "	New York Giants at Washington	45-35
Oct. 16	Chicago Cards-Green Bay at Milwaukee	39-17
" "	Los Angeles at Detroit	21-10
" "	New York Bulldogs at Washington	14-38
" "	Philadelphia at Chicago Bears	21-38
" "	Pittsburgh at New York Giants	21-17
Oct. 23	Chi. Bears at N. Y. Giants	28-35
" "	Detroit at Chi. Cards	24-7
" "	Green Bay at Los Angeles	7-35
" "	N. Y. Bulldogs at Pittsburgh	13-24
" "	Washington at Philadelphia	14-49
Oct. 30	Chi. Bears at Los Angeles	24-27
" "	Detroit-Green Bay at Milwaukee	14-16
" "	N. Y. Giants at Chi. Cards	41-38
" "	Philadelphia at Pittsburgh	38-7
" "	Washington at N. Y. Bulldogs	14-14
Nov. 6	Chicago Cards at Detroit	42-19
" "	Green Bay at Chicago Bears	3-24
" "	Los Angeles at Philadelphia	14-38
" "	N. Y. Bulldogs at N. Y. Giants	31-24
" "	Pittsburgh at Washington	14-27
Nov. 13	Chicago Cards at New York Bulldogs	65-20
" "	Detroit at Chicago Bears	24-27
" "	Los Angeles at Pittsburgh	7-7
" "	New York Giants at Green Bay	30-10
" "	Philadelphia at Washington	44-21
Nov. 20	Chi. Bears at Washington	31-21
" "	Detroit at N. Y. Giants	45-21
" "	Los Angeles at Chi. Cards	28-28
" "	N. Y. Bulldogs at Philadelphia	0-42
" "	Pittsburgh-Green Bay at Milwaukee	30-7
Nov. 24	Chi. Bears at Detroit	28-7
Nov. 27	Green Bay at Chi. Cards	21-41
" "	N. Y. Bulldogs at Los Angeles	20-42
" "	Pittsburgh at Philadelphia	17-34
" "	Washington at N. Y. Giants	7-23
Dec. 4	Chi. Cards at Los Angeles	31-27
" "	Green Bay at Washington	0-30
" "	N. Y. Bulldogs at Detroit	27-28
" "	Philadelphia at N. Y. Giants	24-3
" "	Pittsburgh at Chi. Bears	21-30
Dec. 11	Chi. Cards at Chi. Bears	
" "	Green Bay at Detroit	
" "	N. Y. Giants at Philadelphia	3-28
" "	Pittsburgh at N. Y. Bulldogs	
" "	Washington at Los Angeles	
Dec. 18	Championship Playoff in the West	



## STANDING OF TEAMS

### EASTERN DIVISION

	W.	L.	T.	Pct.
PHILADELPHIA EAGLES ...	10	1	0	.909
New York Giants .....	6	5	0	.545
Pittsburgh Steelers .....	5	5	1	.500
Washington Redskins .....	4	6	1	.400
New York Bulldogs .....	1	9	1	.100

### WESTERN DIVISION

	W.	L.	T.	Pct.
Los Angeles Rams .....	7	2	2	.778
Chicago Bears .....	8	3	0	.727
Chicago Cardinals .....	6	4	1	.600
Detroit Lions .....	3	8	0	.273
Green Bay Packers .....	2	9	0	.182

## PHILADELPHIA EAGLES FOOTBALL CLUB

### ADMINISTRATIVE STAFF

JAMES P. CLARK .....	<i>President</i>
FRANK L. MCNAMEE .....	<i>Treasurer</i>
PAUL C. LEWIS .....	<i>Secretary</i>
VINCENT A. McNALLY .....	<i>Asst. Gen. Mgr.</i>
ED HOGAN .....	<i>Publicity Director</i>
JOSEPH A. DONOGHUE .....	<i>Ticket Manager</i>
VICTOR MOORE .....	<i>Arrangement Director</i>
SAM LANGE .....	<i>Entertainment Director</i>
FRED SCHUBACH .....	<i>Equipment Manager</i>

### COACHING STAFF

EARLE (GREASY) NEALE .....	<i>Head Coach</i>
JOHN S. KELLISON .....	<i>Assistant Coach</i>
LARRY A. CABRELLI .....	<i>Assistant Coach</i>
OTIS DOUGLAS .....	<i>Trainer</i>

### OFFICE

22 South Seventeenth Street  
Philadelphia 3, Pa.  
Telephone: Rittenhouse 6-1323

## THE CHRYSLER DEALERS LISTED BELOW ARE AT YOUR SERVICE WITH BEAUTIFUL NEW CHRYSLERS AND PLYMOUTHS, PARTS AND SERVICE, GUARANTEED TRADE-INS

### SENTMAN MOTOR CO.

5630 CHESTNUT ST.

### WM. T. JONES & SONS

6330 N. BROAD ST.

### JOHN H. KOEGLER, INC.

126 MONTGOMERY AVE.  
BALA-CYNWYD, PA.

### QUAKER CITY MOTORS, INC.

JOHN MORRISON, PRES.  
4233-37 FRANKFORD AVE.

### PMF MOTORS

A. PITALE, J. MONTONE, E. L. FRANKEL  
18th & JACKSON STS.

### J. HARRY SWOPE, INC.

199 SOUTH MacDADE BOULEVARD  
DARBY, PA.



7 OFFICIAL TIMING WATCH FOR THE 8

GIANTS — EAGLES FOOTBALL GAME

*Longines*

*The World's Most Honored Watch*

THE WORLD STANDARD OF ACCURACY FOR SPORTS  
TIMING . . . 10 WORLD'S FAIR GRAND PRIZES, 28 GOLD  
MEDALS . . . HIGHEST OBSERVATORY ACCURACY HONORS



*Product of*

*Longines-Wittnauer Watch Company*

SINCE 1866, WATCHES OF THE HIGHEST CHARACTER

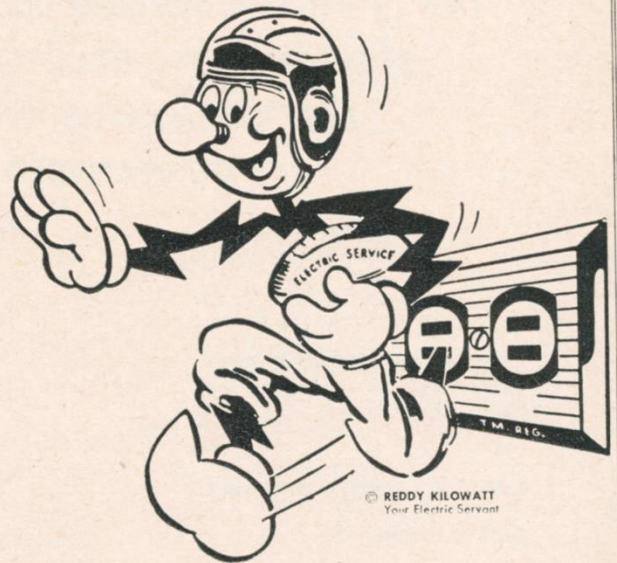
LONGINES WATCHES from \$71.50; WITTAUER WATCHES from \$34.75



*Reddy Kilowatt*

ALL-AMERICAN  
CHOICE

FAST • EFFICIENT  
DEPENDABLE



© REDDY KILOWATT  
Your Electric Servant

PHILADELPHIA ELECTRIC COMPANY



# National Football League Statistics

## LEADING GROUND GAINERS

	Atts.	Yds. Gained	Longest Gain	Ave.
<b>Van Buren, Philadelphia</b>	242	1050	41	4.3
Canadeo, Green Bay	191	982	54	5.1
Angsman, Chi Cards	120	669	82	5.6
Nuzum, Pittsburgh	126	578	64	4.6
Roberts, NY Giants	133	566	63	4.3

Longest Gain: 97 yds Robt. Gage, Pittsburgh vs Chi Bears, Dec. 4, 1949  
(Equals record of Andy Uram, Green Bay, made October 8, 1939, vs Cards)

## LEADING PASSERS

	*Stdg.	Atts.	Com.	Yds. G	Td. P	Pct. Com.	LP	Int.	Pct. Int.
Conerly, NY Giants	1	282	143	2040	17	50.7	85	17	6.0
<b>Thompson, Philadelphia</b>	2	193	105	1596	15	54.4	75	10	5.2
Baugh, Washington	3	207	116	1595	15	56.0	76	12	5.8
Lujack, Chi Bears	4	273	138	2170	17	50.5	81	19	7.0
Layne, NY Bulldogs	5	265	139	1663	9	52.5	69	15	5.7

Longest Completion: 85 yds Charles Conerly, NY Giants vs Chi Bears, Oct. 23, 1949 TD.

\*Standings computed on an inverse grading system based on number of completions, per cent of completions, touchdown passes, yards gained, and per cent of interceptions.

## LEADING PASS RECEIVERS

	Received	Yds. Gained	Longest Gain	Touchdowns
Fears, Los Angeles	67	854	42	7
Mann, Detroit	57	832	41	2
Chiple, NY Bulldogs	54	609	69	2
Keane, Chi Bears	45	689	39	6
Swiacki, NY Giants	45	607	42	4

Longest Completion: 85 yds Gene Roberts, NY Giants vs Chi Bears, Oct. 23, 1949 TD.

## LEADING SCORERS

	Td. R	Td. P	Tot. Td	XP	XPM	FG	FGA	Tot. Pts.
Roberts, NY Giants	9		17					102
Harder, Chi Cards	7	1	8	42	2	3	5	99
Dudley, Detroit	3	2	5	27	2	5	13	72
Waterfield, Los Angeles	1		1	39	0	9	15	72
<b>Van Buren, Philadelphia</b>	10	1	11					66

## LEADING PUNTERS

	*Stdg.	No.	Ave. Dist.	Longest
Waterfield, Los Angeles	1	45	44.4	61
Boyda, NY Bulldogs	2	49	43.3	57
Poillon, Washington	3	59	40.1	59
Cochran, Chi Cards	4	45	41.6	59
Geri, Pittsburgh	5	35	43.5	82

Longest Punt: 82 yds Joe Geri, Pittsburgh vs Green Bay, Nov. 20, 1949

## PUNT RETURN LEADERS

	*Stdg.	No.	Yds. Ret.	Ave. Dist.	Longest	Touchdown
Smith, Los Angeles	1	25	393	15.7	85	1
Tunnell, NY Giants	2	23	291	12.7	67	1
<b>Reagan, Philadelphia</b>	2	19	251	13.2	42	1
Cochran, Chi Cards	2	13	287	22.1	71	2
Triplett, Detroit	5	20	254	12.8	62	1

Longest Return: 85 yds Verda Smith, Los Angeles vs Green Bay, Oct. 2, 1949.

\*Standings computed on an inverse grading system based on number and average distance.





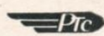
**IT ALL DEPENDS  
ON WHERE YOU SIT...**

A seat in the saddle is fun... but remember the mare that decided to go it on two legs?

Neither is it fun to sit behind the wheel of your car on the way to and from the football game and "run interference" through heavy traffic, impatient horn honkers, scurrying pedestrians and "No Parking" signs.

Why not go to the game the easy way? Let PTC take you skillfully and quickly through the crowds. Saves cars! Time! Temper! And expense!

You'll be in better mood for the game... in better mood to relax for more fun after the game.



**PHILADELPHIA TRANSPORTATION COMPANY**

HAUGHTON WEYMOUTH & BISHOP

•

INSURANCE BROKERS FOR THE EAGLES

•

FIDELITY-PHILADELPHIA TRUST BUILDING

PHILADELPHIA 9, PA.

## **Outfitters of World's Champions PHILADELPHIA EAGLES**

•

With MAC GREGOR-GOLDSMITH FOOTBALL EQUIPMENT  
—used by leading professional football and baseball teams  
and college and high school teams throughout the country

•

## **MITCHELL & NESS**

*Sporting Goods*

**1312 ARCH STREET**

**PHILADELPHIA**

The Official Watch for Timing Today's Game is Longines—"The World's Most Honored Watch."





## NOTES FROM THE EAGLES' NEST

by ED HOGAN

**W**ELL, we'll wrap this one up in mothballs until next year. And may the new year be as good to our Eagles as 1949! After the Eagles sewed up the Eastern championship against Pittsburgh two weeks ago everybody relaxed, everybody that is except, Head Coach Greasy Neale. He gave in somewhat by remarking that it was a great load off his shoulders but he told the boys we've still got to keep on winning.

★ ★ ★

Perhaps the most relieved individual isn't even a member of the Eagles, although he's around us so much we have adopted him. He is the very capable Pennsylvania Railroad passenger agent, Mickey McAllister. Mickey, knowing the time needed to set up trips and move big parties, has been trying for some weeks to arrange the Eagles' western trip for the championship playoff. But fearing they might jinx the Eagles, nobody would talk very much. In fact, Neale walked into Vince McNally's office a few days before the Pittsburgh game, saw McAllister there and beat a hasty retreat. "I don't want to see you now," cracked Neale as he flew down the stairs.

★ ★ ★

Noticed the Associated Press All-American team and was pleased to see that two of the Eagles' draft choices, Penn's John (Bull) Schweder and Notre Dame's Jim Martin made the first eleven. Schweder, drafted last year, was named at guard and Martin, drafted as our third choice this year, at tackle. Martin, by the way, has set some kind of a record at Notre Dame for starting in consecutive games. And our number one choice, Wisconsin's Bob Wilson, was first choice on the Big Ten and second team All-America. Wilson plays end and center and backs up the line. Ivy Williamson, Wisconsin coach, has told Greasy Neale that

Wilson is a great ball player, good enough and fast enough to play fullback. Still another draft choice of the Eagles, is Paul Campbell, Texas quarterback and passer who will be eligible to play for us in 1950.

★ ★ ★

They're calling Tackle-Trainer-Coach Otis Douglas "The Razorback Kid" these days. Douglas has been mentioned as the successor of John Barnhill at the University of Arkansas, Clyde Scott's Alma Mater. Maybe by the time this sees the light of day, Douglas will have some word on it officially. Anyway, Otis, here's our best. We're confident you'll make good at anything you try. We would hate to lose a valuable guy like yourself. In fact, Coach Neale who would be hard pressed to replace Douglas, recommended Otis for the position.

★ ★ ★

We would like to take this opportunity to thank the boys of the press, radio and television for their grand coverage of us this year. Undoubtedly, it has been the best in the history of the Eagles. The spreads on the games and about individuals have been terrific locally and out of town. Wordage on the radio and television networks have helped spread the Eagles' gospel. They have made our job pleasant. For this, thanks.

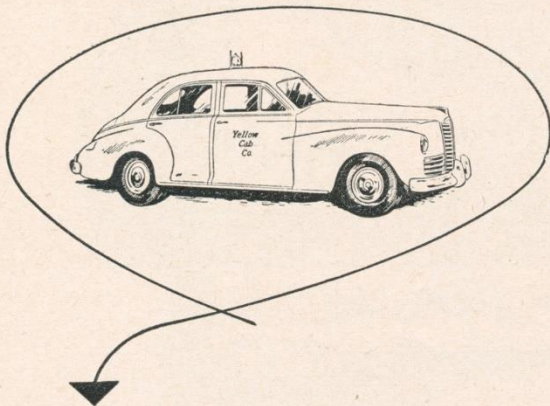
★ ★ ★

Also, we want to hand a few kudos to Billy McCauley and his ground crew at Shibe Park and to the Shibe Park management, Roy Mack, Connie Mack, Sr. and Jr.

★ ★ ★

See you next year!





# IT PAYS TO GO BY YELLOW

*Save Time . . . Parking  
. . . Traffic Worries*

**Phone WALnut 2-8400  
or your neighborhood number**

If you live in Frank-  
ford, Mayfair or  
the Northeast, dial  
DELaware 6-3200.

Subscribers in Boule-  
vard Exchange and  
Overbrook Hills call  
Boulevard 3200.

If you live in Logan-  
Olney-Oak Lane, dial  
GLadstone 5-5400.

If you live in Yeadon,  
Clifton Heights, Aldan  
or Lansdowne, call  
MADison 3-3200.

If your home is in  
Germantown, or  
Chestnut Hill, dial your  
neighborhood num-  
ber VIctor 4-2200.

Subscribers in Clear-  
brook, Hilltop and  
Sunset Exchanges call  
Sunset 3200.

If you want a cab in  
South Philadelphia,  
dial HOWard 5-3200.

In Sharon Hill, Colling-  
dale, Darby and  
Glenolden, call  
Darby 5500.

In Overbrook Park  
call GRANite 2-3200.

**Yellow Cab Co.**



"When he gets the ball, just trip him. He's always good  
for four yards!"

## THE NATIONAL FOOTBALL LEAGUE ROSTER OF OFFICIALS

### GIBBS' CREW

No.	Name	Position	College
5	Gibbs, Ronald	Referee	St. Thomas
17	Beiersdorfer, James	Umpire	None
37	Pecoraro, Sam	Head Linesman	Dallas Univ.
46	Grigsby, Claude T.	Back Judge	Georgetown
28	McHugh, William F.	Field Judge	DePaul Univ.

### DOWNES' CREW

3	Downes, William	Referee	Illinois Tech.
14	Brubaker, Carl H.	Umpire	Ohio Wesleyan
36	Tehan, Dan	Head Linesman	Xavier Univ.
44	Austin, Robert C.	Back Judge	St. Ambrose
22	Sweeney, Charles A.	Field Judge	Notre Dame

### HEINTZ'S CREW

9	Heintz, Emil	Referee	Univ. of Pa.
19	Wilson, Samuel M.	Umpire	Lehigh
31	Berry, Charles F.	Head Linesman	Lafayette
48	Hightberger, John M.	Back Judge	Carnegie Tech.
21	Haines, Henry	Field Judge	Penn State

### WALLACE'S CREW

34	Wallace, Yans	Referee	None
15	Robb, Harry D.	Umpire	Penn State
4	Dowd, Tom	Head Linesman	Holy Cross
26	Miller, Eugene E.	Back Judge	Penn State
39	Gault, Charles	Field Judge	Muhlenberg

### GLASCOTT'S CREW

7	Glascott, John	Referee	Univ. of Pa.
11	Crowley, Joseph G.	Umpire	Muhlenberg
35	McKenney, Joseph	Head Linesman	Boston College
8	Rebele, Carl	Back Judge	Penn State
27	Grimberg, William H.	Field Judge	Villanova

### BOWEN'S CREW

		(Coast)	
6	Bowen, Rawson	Referee	U.C.L.A.
12	Gardner, Cletus	Umpire	Villanova
47	Grenier, Jacques	Head Linesman	Univ. of N. H.
42	Duncan, Norman D.	Back Judge	U.C.L.A.
7	Kemp, Rockwell	Field Judge	U.S.C.

### ALTERNATES

49	Hamer, James E.	Cal. State Teachers
50	Houston, Lawrence	U.C.L.A.



# Old Original BOOKBINDERS

125 WALNUT ST.

"... down ... on Walnut Street, there is still one of the finest sea-food restaurants in the world, Bookbinders."—Struthers Burt—PHILADELPHIA HOLY EXPERIMENT.

STEAKS

SHORE DINNERS

CHOPS

Open Daily

## SCORES OF PAST EAGLES-GIANTS GAMES

1933.....	0 56	1937.....	7 16	1941.....	0 24	1945.....	38 17
	14 20		0 21		0 16		21 28
1934.....	0 17	1938.....	14 10	1942.....	17 35	1946.....	24 14
	6 0		7 17		0 14		17 45
1935.....	0 10	1939.....	3 13	1943.....	28 14	1947.....	23 0
	14 21		10 27		14 42		41 24
1936.....	10 7	1940.....	14 20	1944.....	24 17	1948.....	45 0
	17 21		7 17		21 21		35 14
						1949.....	24 3

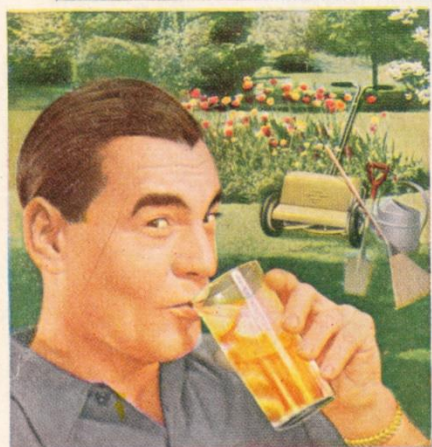
EAGLES WON 12 — GIANTS WON 20 — TIED 1



Whatever your hobby

When day is done . . . you  
deserve

**SCHENLEY**



**It's a Grand and Glorious Feeling** when you land the biggest trout of the day. And it's a glorious feeling, too, when you enjoy Schenley in your favorite drink. For Schenley is richer, finer *always*. Its smooth, mellow taste is the result of Schenley's rare, older whiskies and matchless blending skill. So, when day is done, treat yourself to the best. Enjoy Schenley, the whisky of *unchanging* perfection.

**Whatever Your Hobby . . .**

fishing, gardening, or "arm-chair" baseball . . . when day is done, it's time for Schenley. Treat yourself and your friends to delicious drinks made with finer-tasting Schenley. You'll agree every drop of Schenley is richer, more satisfying!



*Richer  
Finer*

**SCHENLEY**



A Schenley Mark of Merit Whiskey

from **SCHENLEY**

*the House of Aged Whiskies*

RARE PRE-WAR QUALITY BLENDED WHISKY. THE STRAIGHT WHISKIES IN THIS PRODUCT ARE 5 YEARS OR MORE OLD. 35% STRAIGHT WHISKY. 65% GRAIN NEUTRAL SPIRITS. 86 PROOF. SCHENLEY DISTRIBUTORS, INC., NEW YORK CITY.

