



SHIBE PARK • DECEMBER 10 • 1950

EAGLES

GIANTS

OFFICIAL PROGRAM
TWENTY-FIVE CENTS

WPEN PHILADELPHIA'S SPORTS STATION



**FOOTBALL
BASKETBALL
BASEBALL
BOXING**



Broadcasting
**ALL HOME & AWAY
GAMES**

•
**World Champion
EAGLES**

•
NOTRE DAME

•
**MAJOR BOXING BOUTS
EVERY MONDAY NIGHT**

COMING EVENTS

BASKETBALL

Dec. 12	Warriors vs. N.Y. Knickerbockers	9:05 P.M.
Dec. 14	Warriors vs. Ft. Wayne Pistons	9:05 P.M.
Dec. 16*	Penn vs. Muhlenberg	8:00 P.M.
Dec. 16*	Villanova vs. Louisville	10:00 P.M.
Dec. 16*	Temple vs. N.C. State	8:00 P.M.
Dec. 16*	LaSalle vs. St. Joseph	10:00 P.M.
Dec. 19	Warriors vs. Minneapolis Lakers	9:05 P.M.
Dec. 23	LaSalle vs. Niagara	8:00 P.M.
Dec. 23	St. Joseph vs. Utah	10:00 P.M.

BOXING

Monday Nites "Fight of the Week" 10:00 P.M.

*"Round Robin" coverage introduced so successfully
by WPEN last season

950

102.9

WPEN

The Sun Ray Drug Stations

IN PHILADELPHIA

WPEN-FM

Vic Hendler Proudly Presents

1951 TV Champs



16-inch Picture Tube
145 Square Inch Screen

It's the new PHILCO 1634-M with *Balanced Beam*—makes the finest picture in television better than ever! Luxurious Mahogany veneer console cabinet, Built-In Aerial, and new, exclusive 1951 Philco features. Come in for a demonstration.

NEW, EXCLUSIVE 1951
PHILCO
Balanced Beam
TELEVISION

Now, enjoy the newest advance in television on our **SPECIAL EASY TERMS**. New Philco invention *balances the picture tube scanning beam*...yes, does away with blurred edges or smeared images!

**FIRST TRUE-FOCUS
PICTURE IN
TELEVISION HISTORY**



NO BLUR



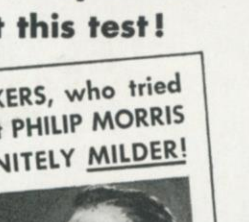
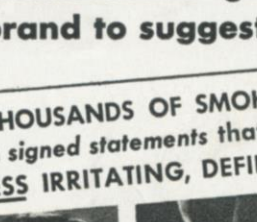
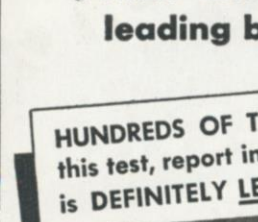
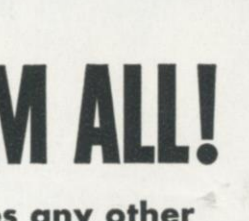
NO SMEAR

Vic Hendler

ST 2-5454

6th & Diamond Sts.

OVER A QUARTER CENTURY OF FAITHFUL SERVICE



WE DARE THEM ALL!

PHILIP MORRIS challenges any other leading brand to suggest this test!

HUNDREDS OF THOUSANDS OF SMOKERS, who tried this test, report in signed statements that PHILIP MORRIS is **DEFINITELY LESS** IRRITATING, **DEFINITELY Milder!**



1 ... Light up a PHILIP MORRIS. Just take a puff—DON'T INHALE—and s-l-o-w-l-y let the smoke come through your nose. Easy, isn't it? And NOW ...

2 ... Light up your present brand. Do exactly the same thing—DON'T INHALE. Notice that bite, that sting? Quite a difference from PHILIP MORRIS!

Try this simple test. We believe that you, too, will agree... PHILIP MORRIS is indeed, America's **FINEST** Cigarette!

NO CIGARETTE HANGOVER

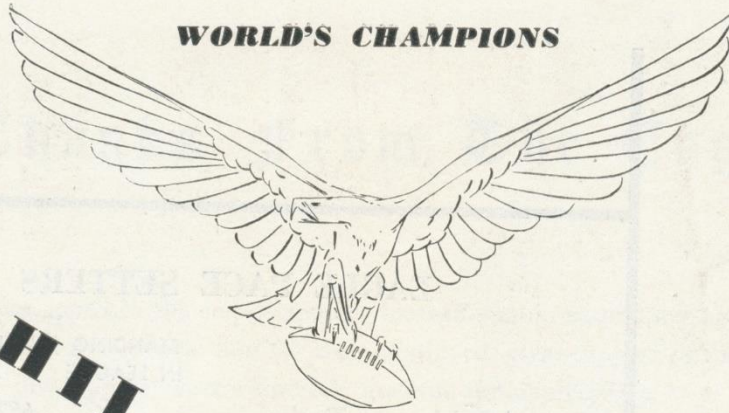
means **MORE SMOKING PLEASURE!**



CALL
FOR

PHILIP MORRIS

WORLD'S CHAMPIONS



PHILADELPHIA EAGLES
vs
NEW YORK GIANTS

DECEMBER 10 • 1950

A SET of six (6) souvenir programs for all the Eagles 1950 home games will make an excellent Christmas gift for some boy or girl. Programs contain autographed photos of the stars, action shots, thumbnail sketches, statistics and a wealth of information about the champions.

The complete set is available for \$1.00; single issues for 25c each.

Please send check, stamps or coin to:

The Philadelphia Eagles
22 South 17th Street
Philadelphia 3, Pa.

CONTENTS

Eagle Pace Setters.....	4
Christmas Message	5
Steve Van Buren.....	6
Hometown Product	7
The Rambling Wrecker.....	9
Eagles Players	11 & 13
Eagle Etchings	14 & 15
Offensive and Defensive Line-Ups.....	17 & 20
Eagles Squad	18
Giants Squad	19
Giants Players and Coach.....	22 & 23
Giant Jottings	24 & 25
1951 Season Book Plans.....	26 & 27
National League Officials.....	29
Players' Colleges	30
Eagles Coaching Staff.....	31
National League Statistics.....	33
National League Schedule.....	34 & 35
Team Standings	36



EAGLE PACE SETTERS

		STANDING IN LEAGUE	PRESENT RECORD
Ground Gaining.....	Ziegler.....	2.....	682 Yds. gained
Passing.....	Thompson.....	13.....	897 Yds. gained
Pass Receiving.....	Ferrante.....	—.....	569 Yds. gained
Scoring.....	Patton.....	9.....	55 Total points
Punting.....	Reagan.....	4.....	41.5 Av. distance
Punt Returns.....	Sandifer.....	—.....	9.2 Av. distance
Kickoff Returns.....	Craft.....	2.....	34.3 Av. distance
Interceptions.....	Sutton.....	4.....	67 Yds. ret.

Men who know the score

know **THREE FEATHERS**

...the whiskey that's

way ahead on every point that counts

smoothness...

mellowness...

flavor!

Blended whiskey 86.8 proof. 65% grain neutral spirits. Three Feathers Distilling Co., Lawrenceburg, Ind.

Thanks From The Eagles

As we approach the end of another football season we find ourselves again indebted to our loyal fans for their continued, great support of the Eagles. For this support, we are sincerely grateful and appreciative.

No football team in this land has enjoyed as much solid backing as the Philadelphia Eagles and no city is as proud of its team as Philadelphia is of the Eagles. Many thanks from everybody concerned.

We of the Eagles' management, now concluding our second year as owners of the team, extend to our loyal rooters our sincere wishes for a Merry Christmas and a Happy New Year.

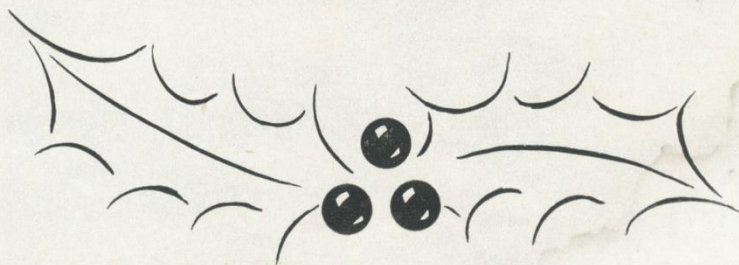
And, as president of the Philadelphia Eagles, I can assure you of our continued efforts to bring the best in football to the city which so richly deserves the finest in all fields of endeavor. In the years to come there will be no slackening in our efforts to continue to keep the Philadelphia Eagles up at the top.

May the new year, 1951, be a most prosperous and happy one for all of you.

Sincerely,

Las F Clark

President, Philadelphia Eagles



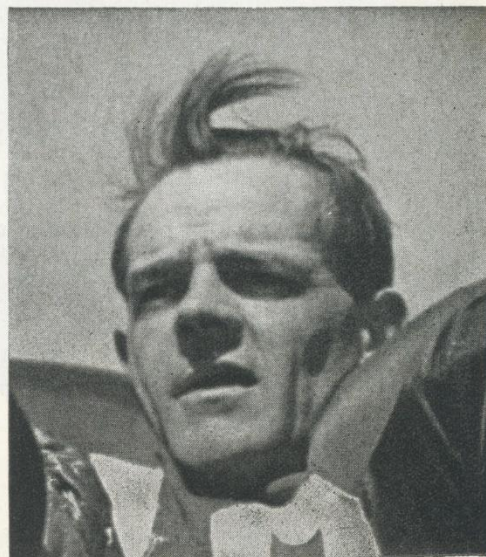


Steve Van Buren

HOME TOWN PRODUCT

BY DICK CRESAP

Of The Philadelphia Bulletin Sports Staff



FRANK REAGAN

FRANK REAGAN, one of Philadelphia's prize football products, plays against the Giants today and even the televisitors must have seen enough this season to recognize the fact he's not only still a star but also a pretty nice guy. And here's one reason why:

When the Eagles played the Giants two weeks ago, Reagan caught a punt and was tackled almost immediately. He tried to squirm for another yard, a maneuver the rival pros like most because they can really cream the practically helpless ball carrier. So? Two of the nearest and biggest Giants on the scene kept their knees to themselves and merely pressed Reagan to earth.

Sportsmanship? Yes, but not only that. Frank, a fairly frail chap of 31, played four seasons with New York, helping the Giants win the Eastern Division championship in 1946—and he made a lot of friends in Gotham from stout Steve Owen on down.

One of the greatest athletes in the long history of the University of Pennsylvania, the 180-pound Reagan is still carrying his own weight well, 10 years after he finished starring for the Quakers. The last decade includes the four years with the Giants and the last two with the Eagles, plus four which could have been slightly tougher—four years with the Marine Corps, all but eight months of it on the battleship New Jersey. That chunk of iron fired at friend and foe through 18 separate engagements from Tarawa up to and including Japan. It got shot at, too.

Today's game against his former playmates, the Giants, could be the last for Frank. After all, he's been playing football for about 20 years, starting as a kid and then blazing at Northeast Catholic High before going to Pennsylvania where he is considered one of the four best backs in the Quakers' modern era. Besides, he has other business connections in the city, a charming wife and three children who don't want to see the old man come home some Sunday night with his nose breathing in his right ear. Plus that, he's had several offers to coach football and that he thinks he'd like.

Reagan's name is seldom seen in the scoring column or in the yardage gained from ball-carrying list since he is used only on defense, except when he's punting. However, he has led the Eagles interceptors in yardage returned this season, traveling for 132 yards and one touchdown. Furthermore, he's listed as carrying the ball from scrimmage three times for a total of 55 yards.

The big one in the latter note was his 40-yard romp against Washington when, back to punt, he thought the kick would be blocked and decided to gallop. He did—for 40 yards.

Most fans figure Reagan's greatest value, however, is in kicking the ball. Last year, Joe Muha, the regular booter, was laid up for a short time and Frank took over. He kicked eight times and averaged almost 46 yards with his longest just 63, which indicates he had few flukes. As of last week, Reagan booted 37 times—all but one, which was Muha's fine 48-yarder—and averaged better than 40 yards.

Tommy Thompson, the Eagles quarterback, told a story a couple of years ago when Reagan first came to the club, the nut of which Tommy was glad to have Frank on his side.

"I remember throwing three touchdown passes against the Giants one day," said Tommy, "and then Reagan became the Giant safety man. He intercepted three passes. It makes a little difference."

Greasy Neale, the Birds' coach, has frequently called Reagan the brains of the defensive backfield, an ace at diagnosing plays and getting up to cover them.

Reagan—and the Eagles—would like nothing better than for Frank to duplicate his 1949 effort against the Giants. He played his best ball of the season in that one, tackling all over the field and running a New York punt for a 41-yard touchdown.

One more like that zig-zag gallop would top off another good season for Philadelphia's favorite.

← Here's what the opposition sees when they meet Steve Van Buren head-on. Best of luck to you, Steve, on your "big day"!

football on **WCAU**

television channel 10

U. of P. HOME GAMES

PIGSKIN PREVIEW

full hour preceding U. of P. games

FOOTBALL SCORECARD

following U. of P. games

PHILADELPHIA EAGLES

October 15—Baltimore
November 12—Washington
November 26—New York

"TOUCHDOWN"

Friday at 7 p. m.

COMPLETE RESULTS

by Bill Campbell, Saturdays
at 7:30 p.m.

radio

ALL U. of P. GAMES

"KICK-OFF TIME"

preceding
Penn games

"GRIDIRON CLUB"

with Bill Sears, Fridays
at 8 p.m.

WCAU

am
tv

• The Philadelphia Bulletin Stations

The Rambling Wrecker

BY TONY ZECCA

International News Service Sports Writer



PAT McHUGH, a fellow with the working end of a swivel chair where his hips should be, walked in on Greasy Neale one day while the coach was thinking about digging into the grab bag for 1949 draft bait.

The red head isn't the kind of a product you'd ordinarily expect from the state of Alabama. The only thing slow about him is his typical Southern drawl, but even that runs faster than par.

This was one of the days he was revved up more than usual.

"Coach," he sputtered. "I know a nifty prospect you might be able to draft for the team. Name of Ziegler." "Ziegler," said Greasy. "Can't seem to place him. Where'd he play and what position?"

"Why, he followed me at Georgia Tech," went on McHugh. "And boy is he a runner. Played half and fullback."

"You really think he's good?"

"Good!" said Pat. "Why you should see this boy in action. They call him the 'Zoomer' because he's so fast. He goes like a bullet. Big and strong. Reckon he must weigh close to 200 and stands about six feet. You ought to grab him Coach."

Neale could not overlook this slightly terrific buildup. Such a draftee would fit into his plans like two Canasta jokers when you're trying to meld 120.

Here seemed a good prospect for the backfield despite the fact that his ball carriers already were the envy of every coach in the loop. Of course, at that time, Pritchard's knee was in fine working order, and Scott's shoulder was as sound as a savings bond. But Neale figured it would be very nice to have a big, strong, hard runner to pace Van Buren.

Thus, on the strength of Pat's glowing endorsement, Neale made Frank Ziegler his number three draft choice for 1949.

He wasn't quite prepared for what was to follow. He fished Ziegler in the third round of the draft pool as planned, but after taking one look he was tempted to throw him back in again for size.

Because Ziegler looked anything but like a football player, nor does he even now when you see him in street clothes. The "big, brawny bruiser" described so eloquently by McHugh turned out to be a somewhat scrawny (as football players go) looking guy with slight shoulders and a chest smaller than the waists of some of the line behemoths. His height was more like five-eleven and he was about 30 pounds shy of the 200 that McHugh gave him.

This guy a football player? Maybe water boy for the Vassar daisy chain. He looked like you could knock him over with the proverbial feather. And so did Neale at that moment.

"My Gawd," cried Neale, "there goes my third draft choice."

And Ziegler went. But not the way Neale thought.

Like his nickname of "Zoomer," he literally zoomed

out of the Eagle backfield and exploded into the line every time he took a handoff or lateral from the quarterback.

McHugh finally emerged from the doghouse at training camp because Ziegler came up to his billing and then some. Of course the description he gave Neale was still way off the beam, but to McHugh, who isn't too big himself—weighing less than 165—Ziegler probably did look like a bruiser.

The coaches—from Neale on down—were goggle-eyed with amazement at the way Ziegler carried the ball. He didn't skip, dodge or feint, or speed his way past oncoming tacklers. He powered by them, brushed them off. From the far end of the field, you'd think Van Buren was carrying.

Yet to see him off the field in civvies, you'd never dream that he was a power-runner in the big time football arena. What makes him a scourge of the opposition when he's lugging the pigskin? Here's the way Neale tells it: "Two things about Ziegler make him great. He doesn't look like a football player from the waist up. All he has there is heart—which you can't see—but there's plenty of that. He's one of those do-or-die guys who just refuses to go down and stay there. That's the first point. The other is his legs. They don't seem to belong to the rest of him. They're thick, full of muscle and power which enable him to get off the way he does."

And end coach Larry Cabrelli says: "I've never seen a guy with such a perfect set of legs. Why Ziegler can generate enough power in them to drive like a 200-pounder. That's why he's hard to knock down."

This is born out by statistics making him the team's top ground gainer, averaging nearly five yards per carry. His total yardage ranks him with the best ball-toters in this "big man's" league.

All this from a guy who doesn't look the part.

It goes almost without saying that he proved to be manna from heaven this season for the Eagles with their backfield woes. With dependable Steve Van Buren sidelined early in the season, Ziegler stepped right into Steve's cleat marks to the amazement and gratification of the staff and fans.

His biggest fan is Van Buren himself, who seems to get almost a vicarious thrill when he sees his "understudy" tote the ball.

The entire team, for that matter, takes to him like big brothers.

"Stay down, stay down," they yell from the bench when he's tackled. This is because Frank is one of those guys who tries to get every last inch, and most of your big injuries in pro football come when you try to get up after you've been tackled. That's when they gang up on you.

His favorite play, like Van Buren's, is slicing over right tackle. He needs only a flash of light, and he drives through.

Unlike the ditty which is synonymous with his Alma Mater, he's no rambling wreck from Georgia Tech.

Ziegler's a rambling wrecker!

You a Monday Morning Quarterback?

Be a Saturday-Sunday expert!...

Let the WFIL stations take you right onto the field while the game is still in play.

Throughout the Football Season, WFIL and WFIL-TV will carry a full schedule of the outstanding games being played all over the country.

College Games on Saturdays—Penn, Notre Dame, Army, Purdue, Cornell, Navy... many more.

Pro-Football on Sundays—Eagles... Cardinals... Steelers... Rams... Giants... Browns... Bears.

PLUS—a Thanksgiving Special!
Pittsburgh Steelers vs. Chicago Cardinals



WFIL-TV

CHANNEL 6

Saturdays: Leading College Games

Sundays: Professional Football

Tuesdays—11 P.M.: Eagles' Home Games (film)

WFIL

560 ON YOUR DIAL

Saturdays: U. of Pennsylvania games, every week

Variable kick-off times will be announced in advance of each game.

Extra Points

EAGLES' NEST

Tuesdays, 7:30 P.M. — WFIL-TV

PRO FOOTBALL HIGHLIGHTS

Fridays, 8:30 P.M. — WFIL-TV

GEORGE WALSH LOOKS 'EM OVER

Mondays through Saturdays, 7:00 P.M., WFIL-TV

TOM MOOREHEAD

Mondays through Saturdays, 6:15 P.M., WFIL

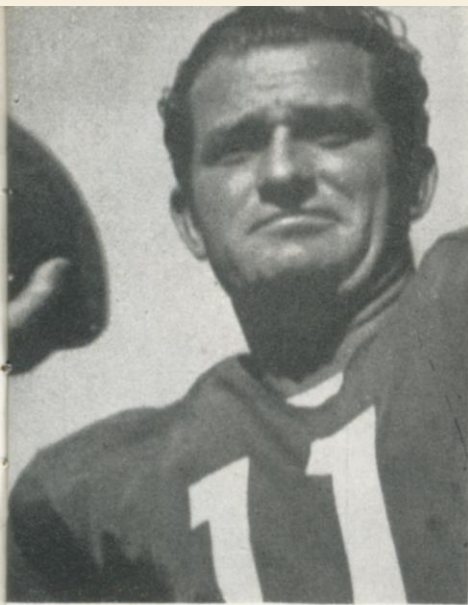
WFIL-TV

CHANNEL 6

WFIL

560 ON YOUR DIAL

The Philadelphia Inquirer Stations



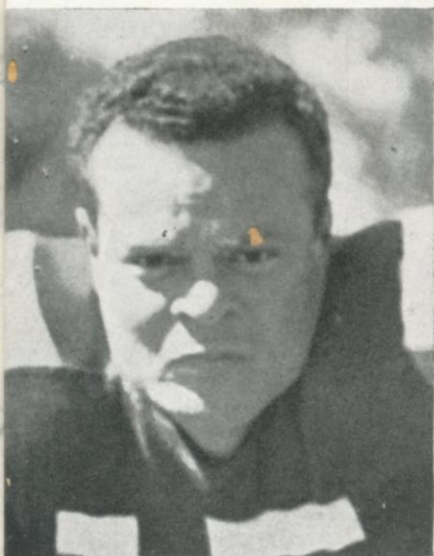
11 TOMMY THOMPSON QB



65 CLIFF PATTON G



39 BILL MACKRIDES QB



15 STEVE VAN BUREN HB

1950 PHILADELPHIA EAGLES



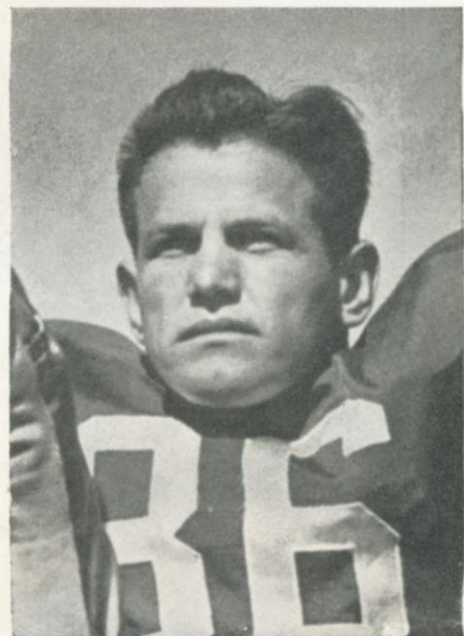
60 CHUCK BEDNARIK C



35 PETE PIHOS E



64 MARIO GIANNELLI G



36 JOE MUHA FB



"Oh! Listen to the One-Man Band!"

A one-man band makes an amusing vaudeville act, but not much harmony. Though we may applaud such an odd performance, we must admit that the music would be more satisfactory if each instrument were played by an accomplished musician.

The corporate executor or trustee is *not* a one-man band. A trained man is responsible for each "instrument" in the management of your estate.

You and your lawyer are invited to discuss the affairs of your estate with a trust officer of this Company.

FIDELITY-PHILADELPHIA Trust Company

BROAD AND WALNUT STREETS, PHILADELPHIA 9

Member
Federal Reserve System

Organized 1866

Member
Federal Deposit Insurance Corporation

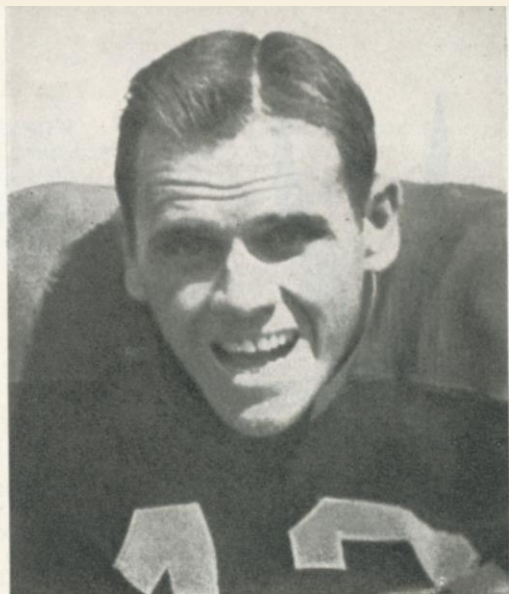
Fidelity presents **GREAT MUSIC** on Television, 10:30 P.M., Sundays
on WPTZ (Channel 3), Guy Marriner, commentator



52 VIC LINDSKOG C



41 FRANK ZIEGLER HB



43 JIM PARMER HB



32 JACK MYERS FB

1950 PHILADELPHIA EAGLES



33 RUSS CRAFT HB



53 AL WOJCIECHOWICZ C



79 VIC SEARS T



49 PAT McHUGH HB



EAGLE ETCHINGS

NEILL ARMSTRONG . . . Slick pass catcher from Oklahoma Aggies . . . fourth year with Eagles . . . Deceptive motion much like Don Hutson . . . uses height (6 feet two inches) to best advantage . . . split starting left end assignments with Blackjack Ferrante . . . fast and shifty . . . ran hurdles for Oklahoma A. & M. . . . makes his home in Tishomingo . . . married and father of two children.

CHARLES BEDNARIK . . . Chuck . . . from University of Pennsylvania . . . outstanding college player of the country in 1947 and 1948 . . . Eagles' bonus pick . . . named to every All-American in 1947 and 1948 . . . won Maxwell Club, Los Angeles Times, and Helms Foundation awards as player of year for 1948 . . . sought by every professional club in America . . . picked by Eagles' coach Greasy Neale as All-Star choice . . . particularly sharp on defense . . . intercepted seven forward passes in 1946 and six in 1947 . . . opposing teams just refused to throw in his territory in 1948 . . . scored only touchdown of his college career in 1948 against Columbia . . . played offense and defense last year, his first in professional football . . . married.

RUSS CRAFT . . . fifth year with Eagles . . . sturdy defensive back . . . particularly keen on pass defense . . . at 5 feet 9 inches one of shortest men on squad but also one of most durable . . . graduate of Alabama.

JACK FERRANTE . . . one of smartest pass catchers in game . . . back for eighth time in big leagues . . . caught 34 passes in 1949 for 508 yards and seven touchdowns . . . product of Philadelphia sandlots . . . one of few players to make good in National League without benefit of college experience . . . in seven years of pro ball has caught 134 passes for 2306 yards and 28 touchdowns and 168 points . . . successful salesman . . . married and father of two children.

MARIO GIANNELLI . . . Yoyo . . . huge Italian from Boston College . . . third year with club . . . agile for big man—he weighs 270 pounds . . . played left guard splitting assignments with Cliff Patton and John Magee . . . difficult to hurt . . . in 1938 and 1939 played in 18 consecutive games without substitution at high school.

VIC LINDSKOG . . . best offensive center in National League . . . seventh year with Eagles . . . All-America pivot on Stanford's 1941 Rose Bowl team . . . keen student of football particularly T formation . . . type to make successful coach . . . won Golden Gloves ring championship on West Coast . . . powerful physique . . . leads calisthenics . . . married and father of boy.

PAT Mc HUGH . . . fourth year in big time . . . nicknamed Red Fox, Hinge Hips, Razor's Edge . . . most nervous player on club . . . considered best pass defender in league . . . intercepted six passes for 89 yards in 1949 . . . weighs only 166 pounds.

BILL MACKRIDES . . . Home town product . . . went west to make good at University of Nevada . . . fourth

year with club for which he once acted as mascot . . . slick ball handler and deft passer . . . came through under terrific pressure in Bears' game of 1948 . . . Regular quarterback, Tommy Thompson, hurt in previous against club Eagles never had beaten and quarterbacked Eagles to first victory over Bears.

JAY MAC DOWELL . . . one of better defensive tackles in league . . . 215 pounds and six feet three inches tall . . . splits right tackle assignments with Al Wistert . . . also plays end on five-man line . . . fast for a big man and seldom fooled . . . fourth year with Eagles.

JOE MUHA . . . one of the game's finest punters . . . averaged 40 yards per try . . . returns for sixth season with Eagles . . . majored in civil engineering at VMI . . . now home designer in Los Angeles area . . . Brother George star at Carnegie Tech . . . used chiefly as blocker on running plays . . . smart and aggressive . . . fast for big man . . . one of most dependable men on squad . . . married and makes his home in South Pasadena.

JIM PARMER . . . third year man from Oklahoma A. and M. . . . hard hitter and tackler . . . teammates say he hits almost as hard as Van Buren . . . carried ball 66 times in 1949 for 234 yards and five touchdowns . . . plays offense and defense . . . well regarded by Coach Neale . . . looks for best year in 1950 . . . married and father of daughter.

JOHN CLIFF PATTON . . . better known as Cliff . . . one of league's best conversion artists and field goal kicker . . . streak of consecutive extra points stopped in Washington last year at 84, new league record . . . wound up season with 18 straight . . . kicked nine field goals in 1949 . . . his 48 yarder against Pittsburgh season's best . . . Irish-Indian descent . . . father is sheriff of Clyde, Texas, where family owns farm . . . Cliff joined Eagles midway of 1946 season when picked up as free agent . . . passed up promising baseball career to play pro football . . . married and father of one child.

PETE PIHOS . . . snagged 34 passes for total gain of 484 yards and 4 touchdowns . . . in three years with club total 103 passes caught, 1632 yards and 23 Td's . . . hard runner . . . likes game rough . . . knows how to use his 215 pounds . . . plays right end on offensive and left end on defense . . . helps to back up line . . . probably most feared end in league by opposing coaches . . . won All-American honors at University of Indiana.

VIC SEARS . . . Oldest Eagle in point of continuous service . . . joined club in 1941 same year Head Coach Greasy Neale took over . . . 1950 season will be the tenth straight for Vic who entered professional football right off University of Oregon campus . . . missed only 14 minutes entire collegiate career . . . named team captain for 1950.

For Officials' Signals and Penalties See Page 2.

BUD SUTTON . . . Philadelphia product from Northeast High and Temple University . . . played 1949 season with Buffalo Bills . . . starred on Temple's teams in 1946 and 1947 . . . passed up baseball career (second baseman) to play pro football . . . one of four Temple University graduates on squad . . . 180-pound speedster . . . equally adept on offense and defense.

STEVE VAN BUREN . . . greatest football player in America . . . holds six National League records . . . returning for his seventh year with Eagles . . . led league in ground gaining fourth time in six years . . . carried ball 263 times to gain 1146 yards, new records . . . average per try of 4.4 yards . . . broke own records for attempts and carries per season . . . also set career marks for times carried (1020) and yards gained (4904) . . . total yards gained 1004 greater than old record set by Clark Hinkle of Green Bay in TEN year period . . . Steve compiled his in SIX . . . other league records: most touchdowns in one year (18) and most touchdowns running one year (16) . . . tallied 12 TD's last year for grand total of 67 . . . biggest day of career against Pittsburgh at Shibe Park last year gaining 205 yards . . . record is 215 by Cliff Battles set in 1933 . . . natural athlete, could make good at any sport . . . prone to underestimate his own ability . . . married and makes his home in Pennfield, suburb of Philadelphia.

ALEX WOJCIECHOWICZ . . . Wojie . . . 13 years in National League outranked in point of service only by Washington's Sammy Baugh now in his 14th year . . . spent eight and one-third years with Detroit Lions . . . fifth year with Eagles . . . one of most popular players with Shibe Park fans . . . All-America with Fordham's Seven Blocks of Granite in 1937 . . . loves the game rough . . . two years all-state baseball catcher at South River (N. J.) High School . . . expert with knitting needles . . . married and father of four children . . . makes his home in Wanamassa, N. J.

TOMMY THOMPSON . . . league's leading passer of 1948 season and second in percentage of completions to Sammy Baugh in 1949 . . . completed 116 passes out of 214 attempts for 16 touchdowns . . . percentage of completions 54.2 . . . passed for 1727 yards . . . back for eighth year with Eagles . . . called by Greasy Neale "smartest quarterback in football" . . . one of better amateur golfers in Philadelphia District . . . married and makes his home in Ambler, Pa.

AL WISTERT . . . Whitey . . . eighth season with Eagles . . . one of league's best tackles . . . weight 217 pounds but combines speed with charging power . . . smart and game wise . . . seldom makes a mistake . . . Coach Neale gives Al credit for team's high morale . . . blocks while still on feet and his follow through motion is best in league . . . one of three Wistert brothers in football . . . Francis first at Michigan in 1931 and 1932 . . . Al in 1938-1942 and Alvin 1947, 1948 and 1949 . . . built up fine insurance clientele in Philadelphia . . . married and father of two daughters . . . now makes his home in Philadelphia.

NORMAN WILLEY . . . fullback and end from Marshall College of Huntington, W. Va. . . 6 feet 2½ inches tall and weighs 210 pounds . . . tough line cracker . . . 22 years old . . . starting end for Marshall in 1947 and 1948 . . . shifted to fullback and played regularly last year . . . also won letters in basketball . . . member of Marshall College basketball team which won Los Angeles National Invitation Tournament in 1947 . . . single and lives in Pine Grove, W. Va.

FRANK ZIEGLER . . . one of two Georgia Tech stars with Eagles . . . Halfback Pat McHugh is the other . . . Ziegler played with Yellow Jackets in 1946, 1947 and 1948 . . . joined Eagles last year . . . weighs less than 175 pounds but runs almost as hard as Van Buren . . . surprise package of 1949 season . . . gained 283 yards on 84 attempts . . . plays left half right behind Van Buren . . . looks for even better year in 1950.

SEE THE **EAGLES NEST...A TELEVISION REVIEW OF PHILADELPHIA EAGLES GAMES ON TUESDAY NIGHT FOLLOWING EACH GAME**

DON KELLETT, as commentator, will give highlights of the game as they are presented on the screen.

COACH GREASY NEALE, ASSISTANT COACH VINCE McNALLY and selected players, such as Steve VanBuren, Tommy Thompson, Captain Al Wistert, Chuck Bednarik (former U. of P. star), will be interviewed from time to time.

Hear the expert analysis of the game . . . see the plays in review . . . relive the excitement of the World Champion Eagles pitted against great teams!

EAGLES NEST

WFIL-TV (Channel 6) ... 7:30-8 P.M. TUESDAYS

Sponsored by

Schmidt's
OF PHILADELPHIA
Beer-Ale



**DON KELLETT
COMMENTATOR**



Be *Sure* to make it Seven

In football, it takes that *extra* point after a touchdown to make a score of 7. But in a highball, why not make it 7 right at the start? Then you're *Sure* of that *extra* goodness—the *extra* smoothness—that have made Seagram's 7 Crown the all-American favorite.

Say Seagram's and be Sure

Seagram's 7 Crown. Blended Whiskey, 86.8 Proof, 65% Grain Neutral Spirits. Seagram-Distillers Corporation, Chrysler Building, New York

Have a Coke

DRINK

Coca-Cola

TRADE MARK ®

PHILADELPHIA EAGLES LINE-UP (OFFENSE)

BY POSITION

<u>LE</u>	<u>LT</u>	<u>LG</u>	<u>C</u>	<u>RG</u>	<u>RT</u>	<u>RE</u>
Ferrante 83	Sears 79	Maronic 61	Bednarik 60	Kilroy 76	Wistert 70	Pihos 35
<u>QB</u>						
Thompson 11						
<u>LH</u>			<u>RH</u>			
Van Buren 15			Ziegler 41			
<u>FB</u>						
Muha 36						

NEW YORK GIANTS LINE-UP (DEFENSE)

BY POSITION

<u>LE</u>	<u>LT</u>	<u>LG</u>	<u>C</u>	<u>RG</u>	<u>RT</u>	<u>RE</u>
Duncan 86	Weinmeister 73	Milner 61	Cannady 52	Baker 60	DeRogatis 78	Poole 82
<u>QB</u>						
Schnellbacher 83						
<u>LH</u>			<u>RH</u>			
Tunnell 45			Clay 12			
<u>FB</u>						
Landry 49						

OFFICIALS

Name	Position	College	No.
Emil Heintz	Referee	Pennsylvania	9
Samuel M. Wilson	Umpire	Lehigh	19
Charles F. Berry	Head Linesman	Lafayette	31
Henry Haines	Back Judge	Penn State	21
George Vergara	Field Judge	Notre Dame	33

See line-ups on page 20 for Eagles' defense and Giants' offense

PHILADELPHIA COCA-COLA BOTTLING COMPANY

EAGLES SQUAD

No.	Player	Pos.	Wt.	Ht.	Age
11	Tommy Thompson	B	200	6'1"	32
15	Steve Van Buren	B	205	6'½"	29
21	Bill Boedeker	B	190	5'11½"	26
31	Dan Sandifer	B	190	6'2"	23
32	Jack Myers	B	202	6'2"	25
33	Russ Craft	B	173	5'9"	29
35	Pete Pihos	E	215	6'1"	26
36	Joe Muha	B	210	6'1½"	29
39	Bill Mackrides	B	182	5'11½"	25
40	Frank Reagan	B	182	5'11"	31
41	Frank Ziegler	B	171	5'11½"	26
43	Jim Parmer	B	196	6'	23
44	Norman Willey	E	211	6'2½"	23
45	Joseph Sutton	B	170	5'11"	26
49	Pat McHugh	B	160	5'11½"	30
52	Vic Lindskog	C	202	6'1½"	34
53	Alex Wojciechowicz	C	246	5'11½"	35
60	Chuck Bednarik	C	240	6'3"	25
61	Duke Maronic	G	218	5'9"	29
64	Mario Giannelli	G	265	6'	29
65	Cliff Patton	G	256	6'2"	26
67	John Magee	G	215	5'10"	27
70	Al Wistert	T	228	6'1½"	29
74	Walter Barnes	T	248	6'3"	32
75	Walt Stickel	T	245	6'4"	28
76	Frank Kilroy	G	258	6'2"	29
78	Mike Jarmoluk	T	269	6'5"	28
79	Vic Sears	T	224	6'3½"	31
80	Neill Armstrong	E	184	6'2½"	24
83	Jack Ferrante	E	216	6'1"	33
85	Billy Hix	E	214	6'2"	23
88	Jay MacDowell	T	229	6'2½"	30
89	John Green	E	194	6'1"	28

THE LARGEST SE IN AMERICA

BY LATEST NA



Always **B**uy **MUCH Milder**

SELLING CIGARETTE S COLLEGES

IONAL SURVEY



GIANTS SQUAD

No.	Player	Pos.	Wt.	Ht.	Age
12	Randall Clay	B	185	6'	22
16	James Ostendarp	B	178	5'8"	25
20	Travis Tidwell	B	185	5'10"	25
21	Joe Sulaitis	B	215	6'2"	29
22	Harmon Rowe	B	185	6'	27
30	Joe Scott	B	195	6'1"	24
31	Eddie Price	B	190	5'11"	25
34	Bob Jackson	B	210	5'11"	25
35	Gene Roberts	B	190	5'11"	26
42	Charles Conerly	B	185	6'1"	26
45	Emlen Tunnell	B	180	6'1"	25
49	Tom Landry	B	185	6'2"	25
51	Dick Woodard	C	225	6'2"	24
52	John Cannady	C	225	6'2"	26
53	John Rapacz	C	245	6'4"	25
60	Jon Baker	G	220	6'2"	27
61	Bill Milner	G	220	6'1½"	27
66	John Mastrangelo	G	230	6'3"	24
70	John Sanchez	T	230	6'3"	29
73	Arnie Weinmeister	T	245	6'4"	27
74	Don Ettinger	G	210	6'2"	27
75	Bill Austin	G	220	6'1½"	21
77	James White	T	230	6'2"	29
78	Al DeRogatis	T	240	6'4"	23
79	George Roman	T	235	6'4"	25
80	Kelly Mote	E	190	6'2"	27
81	Bill Swiacki	E	195	6'2"	25
82	Ray Poole	E	215	6'2"	28
83	Otto Schnellbacher	E	190	6'2"	27
85	Ellery Williams	E	185	6'	24
86	Jim Duncan	E	205	6'2"	24
87	Leo Skladany	E	210	6'2"	23
88	Bob McChesney	E	190	6'2"	23

CHESTERFIELD

Have a Coke

DRINK

Coca-Cola

TRADE MARK ®

NEW YORK GIANTS LINE-UP (OFFENSE)

BY POSITION

<u>LE</u>	<u>LT</u>	<u>LG</u>	<u>C</u>	<u>RG</u>	<u>RT</u>	<u>RE</u>
Swiacki 81	Sanchez 70	Sulaitis 21	Rapacz 53	Austin 75	Mastrangelo 66	McChesney 88
<u>QB</u>						
Tidwell 20						
<u>LH</u>						
Ostendarp 16			RH			
Roberts 35						
<u>FB</u>						
Price 31						

PHILADELPHIA EAGLES LINE-UP (DEFENSE)

BY POSITION

<u>LE</u>	<u>LT</u>	<u>LG</u>	<u>C</u>	<u>RG</u>	<u>RT</u>	<u>RE</u>
Green 89	Sears 79	Barnes 74	Wojciechowicz 53	Giannelli 64	Jarmoluk 78	MacDowell 88
<u>QB</u>						
Reagan 40						
<u>LH</u>						
Craft 33			<u>RH</u>			
Sutton 45						
<u>FB</u>						
Muha 36						

OFFICIALS

Name	Position	College	No.
Emil Heintz	Referee	Pennsylvania	9
Samuel M. Wilson	Umpire	Lehigh	19
Charles F. Berry	Head Linesman	Lafayette	31
Henry Haines	Back Judge	Penn State	21
George Vergara	Field Judge	Notre Dame	33

See line-ups on page 17 for Eagles' offense and Giants' defense

PHILADELPHIA COCA-COLA BOTTLING COMPANY



Just in time for Christmas

ANOTHER GREAT PHILCO FIRST... FULL REMOTE CONTROL TELEVISION!



FROM ACROSS THE ROOM, YOU CAN

1. Turn the Set On
2. Select your Channel
3. Adjust Volume
4. Adjust Fine Tuning
5. Adjust Picture Contrast
6. Change Stations
7. Turn the Set Off



• **COMPLETE REMOTE CONTROL AND BALANCED BEAM TELEVISION** in this luxurious Philco Model 2176. Great 215 sq. in. true-focus picture on a 20 inch gray filter-face rectangular tube . . . AM-FM radio and Philco phonograph that plays *all* records automatically. The absolute ultimate in a combination!

*NOW a giant 20 inch true-focus picture
that you can control from across the room*

ANOTHER unprecedented triumph in Philco engineering! Never before in any set has full and complete remote control been possible. But now Philco enables you to control your set completely — turn it on or off, adjust the picture — without rising from your easy chair!

Only Philco has it! And only Philco gives you Balanced Beam Television which *balances* the electron beam that

"paints" the picture on the tube . . . locks it in positive focus over the entire picture area. Now you can enjoy thrillingly sharp, clear pictures . . . entirely free of blur or smear . . . the first true-focus picture in television history.

But these are only two of Philco's great advantages. The new 1951 Philcos offer you the Philco Custom-Duplex Chassis which means vastly increased

sensitivity, performance, and picture quality with remarkable freedom from "ghosts," "snow" and other interference. They also have the famous Philco Electronic Built-in Aerial that outperforms all others by as much as 3 to 1.

Compare Philco with any other set for picture quality . . . tone . . . design . . . value. Prove to yourself that Philco Balanced Beam Television tops them all!

TUNE IN! Philco Television Playhouse, Sunday evenings, NBC-TV Network
. . . Don McNeill's TV Club, Wednesday evenings, ABC-TV Network.



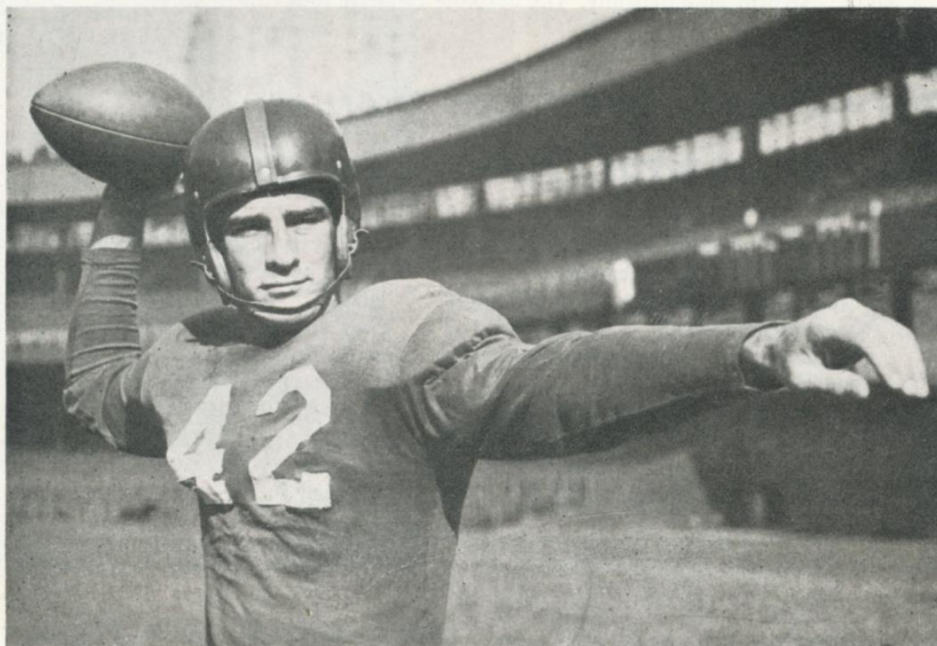
AND BEST OF ALL, A PHILCO

NEW YORK GIANTS . .



STEVE OWEN

For head coach Steve Owen, 1950 is his 25th season with the Giants and his 20th as head coach. During this period the great New York club has won nine sectional titles and three world championships.



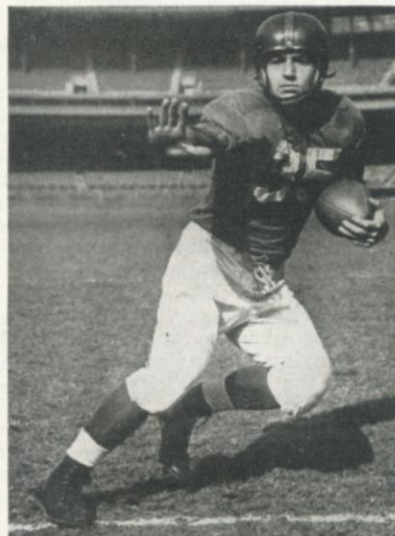
CHUCK CONERLY

Here's "Chuckin'" Charley Conerly, All-American quarterback from Mississippi in 1947, National Football League "rookie of the year" in '48, who's the "arm" of the Giants. He holds the NFL record of 36 completions in one game, and the collegiate record of 133 completions in one season.

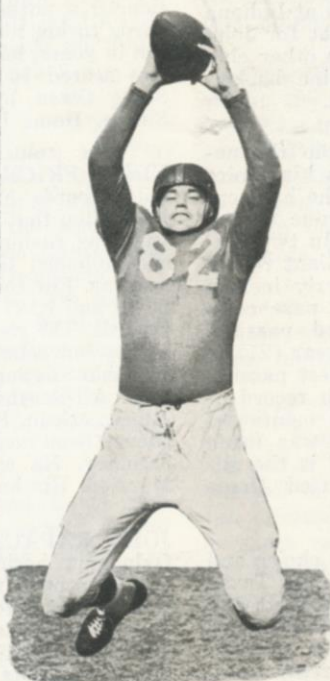
. A Proud Name in Football



BILL SWIACKI—End



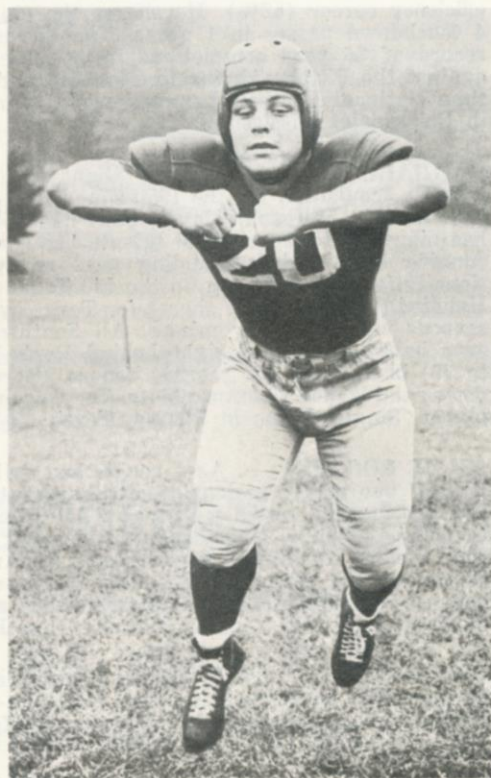
GENE ROBERTS—Halfback



RAY POOLE—End



EMLLEN TUNNELL—Halfback



JOHN CANNADY—Center

GIANT JOTTINGS

BILL AUSTIN . . . Bill did not reach his 21st birthday until midway through last season. Returning this fall he had behind him the experience of a 4 year regular at Oregon State and 1 year regular in the National Football League. All of which is quite a lot for a 21 year old. The Giant brain trust shifted Bill from tackle to a guard spot this fall, a switch of which he heartily approves. Single. Home in Woodburn, Oregon.

JON BAKER . . . Possibly the best new guard in action in the league last fall. Baker joined the Giants late during their final pre-season exhibition swing. Reminds many old Giant rooters of Bill Edwards and has much the same style of play. As his stay at California was interrupted by the war John eventually played 5 seasons college football, also 3 years of rugby and one crew. Gained both All Pacific Coast and All-American honors. Bob Tessier, California's line coach, calls Baker the best guard he has coached. Single. Home in San Francisco, California.

JOHN CANNADY . . . "Big John" is back for his fourth season. The likeable South Carolina boy who did his college playing for Indiana is one of the top defensive centers of the league. Played in the backfield at Indiana and also, briefly, for the Giants. But the spot for John is just a little bit behind that line when the other club has the ball. Rough, durable—a savage line backer. Single. Home in Charleston, South Carolina.

CHARLES CONERLY . . . Charley rewrote the nation's collegiate forward passing records in his senior year (1947) at Ole Miss. In Giant uniform he has continued the same pace in establishing his name among the very top of professional football stars. In two seasons he has written his name all over the Giant record book. Giant records presently held by Conerly include most pass completions 1 year (162), most pass completions 1 game (36), most yards gained passing, career (4313), most yards gained passing 1 year (2175), most yards gained passing 1 game (363), best passing efficiency career (52%). He shares the club record of 4 touchdown passes in 1 game. The above mentioned record of 36 pass completions in 1 game was made against the Pittsburgh Steelers in 1948 and is the all-time National Football League record. Married. Home in Clarksdale, Mississippi.

RANDALL CLAY . . . An early Giant draft choice and a major acquisition for the 1950 squad is the big Texas boy. A right halfback, Clay is built like Joe Scott and has many of Joe's principal talents being an excellent running back and outstanding pass receiver. Exceptionally fast, he ran a leg on the 440 Texas relay team. Handled the extra point chores for Texas over past two seasons with very few misses. All Southwest Conference halfback finished right behind Doak Walker (83 to 76) in the race for scoring honors. Scored 8 touchdowns and kicked 28 extra points. Very strong defensive player. Single. Home in Pampa, Texas.

AL DE ROGATIS . . . As a rookie last fall Al proved himself one of professional football's greatest tackles. Big, strong, and rough, he was an All-Southern Selection while at Duke and also received many All-American Honors, including First Team All-American as chosen by the players themselves. He starred in the Annual East-West Shrine Game after his senior year. Married. Makes his home in Newark, New Jersey.

TOM LANDRY . . . This National League "rookie" was a stand-out performer for the Brooklyn-New York Yankees of the former All America Conference last

season. Though used primarily on defense by the Yankees, Steve Owen returned Landry to the offensive fullback spot at which he operated so successfully for Texas. Over and above his all-around backfield talents, Tom last fall established himself as one of the football's top punters, averaging 44.1 yards in 51 attempts. Married. Home in Houston, Texas.

JOHN MASTRANGELO . . . Mastrangelo comes to the Giants as one of the former Yankees selected by Steve Owen in the league merger agreement. The big Notre Damer is considered by many as the best defensive guard of the former AAC. John had previously distinguished himself in 1 season of NFL play with the Pittsburgh Steelers. Played for 3 different coaches at Notre Dame, Hugh Devore, Ed McKeever and Frank Leahy. Works off season as flour salesman. Married. Home in Vandegrift, Pa.

JAMES OSTENDARP . . . Ostendarp is one of the top small college backs of the 1949 season. Last fall he rushed for an average of over 100 yards per game, his 8 game season total being 828 yards. Though not considered a passer, he did throw 7 times and added 69 yards to his total as he led Bucknell to their best season in years, losing only 2 games both by a single point. Jim scored 10 touchdowns and was recommended to Steve Owen by Hooks Mylin former N.Y.U. Coach. Single. Home in Baltimore, Maryland.

EDDIE PRICE . . . Price has one of the most remarkable records of recent collegiate football history. It isn't often that a major college back can gain over 1,000 yards by rushing in a single season but Eddie not only accomplished that feat but did it for two consecutive seasons. For the Green Wave Price ran for 1,178 yards in '48 and 1,137 in '49. His average both years was over 6 yards. The record shows not only tremendous running ability but consistency and the ability to take the beating that distinguishes the great back from the good one. All-Southeastern Conference, All-Southern and All-American, Price is another of the Rebel team which Steve Owen coached to victory in the Senior Bowl last January. He was the Giants' second draft selection. Married. His home is in New Orleans, Louisiana.

JOHN RAPACZ . . . The addition of the Giant from Oklahoma assures the Giants of the most powerful center corps in the League. As John also played a great deal of tackle for the late Chicago Hornets he can also be considered as insurance at that position. All-American Center in 1946 and 1947, Rapacz this year is in his third season as a professional. After the 1949 season he was chosen on the second all-conference team of the former AAC. Actually he was recognized as the top defensive center of that league. He was the Giants first draft choice at the June draft of veteran players of the former AAC. Single. He now makes his home in Kalamazoo, Michigan.

GENE ROBERTS . . . In his senior year in college Gene was a little All American first team selection and the 2nd highest scorer in the nation. Had several seasons where he was handicapped by a succession of injuries but last season took his place among the league's all time performers with 17 touchdowns for 102 points. Only Steve Van Buren with 18 touchdown jaunts has exceeded Gene's record in all the league's history. Equalled Giant record of 3 touchdowns in a single game 4 times. Has led Giants in rushing for last 2 seasons and ranked 5th in league in that department in 1949. Married. Home in Kansas City, Missouri.

For Officials' Signals and Penalties See Page 2.

FOR BETTER FRANKFURTERS

BUY — **Burk's**

**FAMOUS
FOR QUALITY**

Sold exclusively at SHIBE PARK

JOHN SANCHEZ . . . One of the best moves the Giants made last fall was to obtain John from the Washington Redskins after the 3rd game of the season. He was immediately dropped into an offensive tackle berth and played regularly for the remainder of the season. His return to the Giants completed a cycle as he was an original Giant draft choice. Captained San Francisco U. team in 1946 and was All Coast and Little All American. He is an expert linguist who has made his living as a Spanish teacher. Married. Home in San Francisco, California.

OTTO SCHNELLBACHER . . . Also known as "The Claw" from the manner in which he plucks passes out of air. A two-way threat who can be used either as offensive end or defensive half back. At the latter spot was outstanding man of late All-America Conference, holding the Conference record for interceptions (11) and for yards returned after interception (239 yards). Playing end in college was all Big Seven in 1946 and 1947, also receiving prominent All American mention. Starred also on the basketball court and was twice All American forward. A top Giant acquisition of the former Conference players. Married. Home in Alexandria, Minnesota.

WILLIAM SWIACKI . . . Bill came to the Giants with a phenomenally spectacular collegiate career behind him. Now he is in his third year with the Giants. The great ex-Columbia pass-snatcher has certainly shown the pro league how he did it. In his rookie year (1948) Swiacki set a new Giant record of 39 receptions in a single season which he made good for 550 yards. Last fall he proceeded to break his own mark with 47 catches for 652 yards. In 1947, his senior year at Columbia,

Swiacki established his reputation as master of "impossible" catches. His most noteworthy reception of that season were those which enabled the light Blue to break the Army winning streak. Bill was a unanimous All-American choice after that season. A serious, hard-working performer in practice, those great catches are the result of such training sessions and don't just happen. Single. Home in Southbridge, Massachusetts.

EMLEN TUNNELL . . . Last fall Emlen took his place among the great defensive backs of professional football. As a member of the Giant's defensive platoon Emlen proved a strong weapon of attack as he returned two pass interceptions and one punt for touchdowns. Over the season the negro ace intercepted 10 enemy passes and ran them back 251 yards. He ran 26 punts back 315 yards. He was third in the League in both departments, i.e., pass interceptions and punt returns. Tunnell is that rarity among present day players, a deadly tackler who prefers defensive assignments. Single. Home in Garret Hill, Pennsylvania.

TRAVIS TIDWELL . . . Giants number one draft choice. Playing varsity ball as a freshman in 1946 led nation in total offense. Sustained ankle injury in baseball in spring of 1947 and only last fall regained full efficiency as a T quarterback. Recipient of award as most valuable player in Southeastern Conference last fall. Participated in two post season all-star games. Blue-Gray at Montgomery and Senior Bowl at Jacksonville. Selected outstanding player on the field and so honored after both games. Played under coaching of Steve Owen in the Senior Bowl and the combination brought victory. Single. Home in Birmingham, Alabama.

"Let's Go Philadelphia"

HYGIENIC SANITATION CO.

**Philadelphia, Harrisburg, Johnstown, Altoona, Pittsburgh,
Washington, D. C., Cumberland, Md., Olean, N. Y.**

PENNSYLVANIA'S LARGEST EXTERMINATING ORGANIZATION

Announcing

1951 SEASON BOOK PLANS

FOR THE CONVENIENCE of our loyal fans, The Philadelphia Eagles are offering several plans for the purchase of 1951 season books.

All seats in Shibe Park will be offered on a season book basis. This will be done in first-come, first-served fashion after 1950 season book holders have exercised their options to renew, and, when possible, to improve their present locations.

THE FOLLOWING PRICES WILL PREVAIL:

\$24.00
Includes Tax

\$18.00
Includes Tax

\$11.10
Includes Tax

A \$10.00 deposit for each ticket is required at time of selection. The final payment will be due on June 15, 1951. You may, of course, pay in full at time of selection.

IF YOU HAVE SEASON BOOKS FOR 1950 . . . YOU WANT TO RENEW FOR 1951.

You will be mailed an application to renew your present locations. Fill it out and return to The Philadelphia Eagles office, 22 South 17th St., Phila. 3, Pa., enclosing a check or money order for \$10.00 deposit on each book.

YOU DON'T HAVE A SEASON BOOK . . . BUT YOU WANT SOME FOR 1951.

On the opposite page you will find an order blank. Fill it out and mail to The Philadelphia Eagles office, 22 South 17th St., Phila. 3, Pa., enclosing check or money order for \$10.00 deposit on each book. Your ticket order will be filled as soon as it is received by us. You are invited to come to the Eagles office after March 1, 1951 to express your desires and examine the Shibe Park chart to see what is available.

1951 SEASON BOOK CLUB PLAN

WE ARE OFFERING a group plan whereby sports-minded organizations and groups may purchase tickets by paying \$1.00 weekly commencing January 8, 1951 or later dates if desired.

Groups of ten or more may be formed, with someone appointed to handle their weekly payments.

Upon completion of ten weekly payments, come in to The Philadelphia Eagles office, 22 South 17th St., Phila. 3, Pa. and select your seats. Otherwise, notify us by mail of your desires, and we will endeavor to accommodate you. For further information call Rittenhouse 6-1323.

\$24.00 Tickets in 24 Weekly Payments

\$18.00 Tickets in 18 Weekly Payments

\$11.10 Tickets in 11 Weekly Payments

SEASON BOOKS MAKE SPLENDID GIFTS



Here is a reproduction of the attractive gift certificate available for fans who want to give Eagles tickets as presents for Christmas or other occasions. The sender will long be remembered by anyone who receives this thoughtful gift.

NOTE: If you now hold a season book in your name, do not fill out this order. This is only for fans who do not as yet hold season books.

1951 SEASON BOOK ORDER

The Philadelphia Eagles

CHAMPIONS 1948-1949

I hereby order season books at $\left\{ \begin{array}{l} 24.00 \\ 18.00 \\ 11.10 \end{array} \right\}$ per book, tax included.
Number

Purchaser.....
(Last Name) (First Name) (Middle Initial)

Address.....
(Street) (City) (Zone) (State)

Phone.....
(Home Number) (Business Number)

Enclosed is check in amount of \$..... as deposit on books.

NOTE: Clip out the above order and mail with check or money order covering \$10.00 deposit on each book to The Philadelphia Eagles, 22 S. 17th St., Philadelphia 3, Pa.

Teams that have flown with Capital

ALABAMA
BOSTON COLLEGE
BOSTON U.
BOWLING GREEN
BROOKLYN
CHATTANOOGA
CLEMSON
DETROIT
DUKE
DUQUESNE
GEORGE WASHINGTON
GEORGETOWN
HOLY CROSS
ILLINOIS
JOHN CARROLL
KENTUCKY
LOUISIANA STATE
MARQUETTE
MARYLAND
MIAMI U. OF OHIO
MINNESOTA
NAVY
NORTH CAROLINA
NORTH CAROLINA STATE
NOTRE DAME
PITTSBURGH
PURDUE

RICHMOND
ST. BONAVENTURE
SAN FRANCISCO
SOUTH CAROLINA
TENNESSEE
TULANE
VANDERBILT
VIRGINIA
V.M.I.
WAKE FOREST
WAYNE
WILLIAM AND MARY
WISCONSIN
YOUNGSTOWN

BALTIMORE COLTS
CHICAGO CARDINALS
CHICAGO HORNETS
CLEVELAND BROWNS
DETROIT LIONS
GREEN BAY PACKERS
LOS ANGELES RAMS
NEW YORK YANKEES
PHILADELPHIA EAGLES
PITTSBURGH STEELERS
SAN FRANCISCO 49'ers
WASHINGTON REDSKINS



The Eagles take to the air!



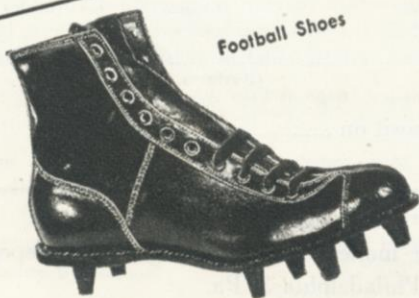
Yes, the Philadelphia Eagles and more than 50 other top football teams travel with Capital Airlines — because the coaches and players know that Capital's 23 years experience in scheduled air transportation assures them of fast, comfortable trips.

Capital
AIRLINES

Riddell

FOOTBALL EQUIPMENT

Safe and Sure . . .
both head and foot!



Football Shoes



Safety Suspension Helmets

An outstanding team . . .
famous for safety first and
dependable performance on
the nation's gridirons.

JOHN T. RIDDELL, INC.
1259 N. WOOD STREET
CHICAGO 22, ILLINOIS

THE NATIONAL FOOTBALL LEAGUE ROSTER OF OFFICIALS

DOWNES' CREW

No.	Name	Position	College
3	Downes, William	Referee	Illinois Tech
14	Brubaker, Carl H.	Umpire	Ohio Wesleyan
36	Tehan, Dan	Head Linesman	Xavier Univ.
44	Austin, Robert C.	Back Judge	St. Ambrose
22	Sweeney, Charles A.	Field Judge	Notre Dame

GIANGRECO'S CREW

10	Giangreco, Samuel	Referee	Manhattan College
15	Robb, Harry D.	Umpire	Penn State
38	Ohrenberger, Wm. H.	Head Linesman	Boston College
49	Hamer, James E.	Back Judge	Cal. State Teachers
27	Grimberg, William H.	Field Judge	Villanova

GIBBS' CREW

5	Gibbs, Ronald	Referee	St. Thomas
17	Beiersdorfer, James	Umpire	None
37	Pecoraro, Samuel	Head Linesman	Dallas Univ.
46	Grigsby, Claude T.	Back Judge	Georgetown
28	McHugh, William F.	Field Judge	De Paul Univ.

GLASCOTT'S CREW

7	Glascott, John	Referee	Pennsylvania
11	Crowley, Joseph G.	Umpire	Muhlenberg
35	McKenney, Joseph	Head Linesman	Boston College
8	Rebele, Carl	Back Judge	Penn State
39	Gault, Charles	Field Judge	Muhlenberg

HEINTZ'S CREW

9	Heintz, Emil	Referee	Pennsylvania
19	Wilson, Samuel M.	Umpire	Lehigh
31	Berry, Charles F.	Head Linesman	Lafayette
21	Haines, Henry	Back Judge	Penn State
33	Vergara, George	Field Judge	Notre Dame

WALLACE'S CREW

34	Wallace, Yans	Referee	None
16	Pritchard, William	Umpire	Penn State
48	Highberger, John M.	Head Linesman	Carnegie Tech
26	Miller, Eugene E.	Back Judge	Penn State
32	Brazil, Lloyd	Field Judge	Univ. of Detroit

ALTERNATE

45	Lehecka, Joseph R.	Lafayette
----	--------------------	-----------

COAST OFFICIALS

20	Blewett, James J.	Umpire	Univ. of California
6	Bowen, Rawson	Referee	U.C.L.A.
23	Brubaker, Harry	Referee	Loyola (L.A.)
41	Devine, Clyde F.	Head Linesman	Oregon State
42	Duncan, Norman D.	Back Judge	U.C.L.A.
40	Gaddy, John R.	Field Judge	Univ. of S. Francisco
12	Gardner, Cletus	Umpire	Villanova
47	Grenier, Jacques	Head Linesman	Univ. of N. H.
50	Houston, Lawrence	Back Judge	U.C.L.A.
7	Kemp, Rockwell	Field Judge	U.S.C.
30	Martinelli, Marty	Head Linesman	Santa Clara
43	Rothert, Harlow P.	Back Judge	Stanford
24	Terremere, Albert J.	Umpire	Santa Clara

Outfitters of World's Champions PHILADELPHIA EAGLES

With MAC GREGOR-GOLDSMITH FOOTBALL EQUIPMENT
—used by leading professional football and baseball teams
and college and high school teams throughout the country

MITCHELL & NESS

Distributors

1312 ARCH STREET

PHILADELPHIA

HERE IS WHERE THEY MATRICULATED

EAGLES

NAME	COLLEGE
Armstrong, Neill	Oklahoma A. & M.
Barnes, Walter	L. S. U.
Bednarik, Chuck	Pennsylvania
Boedeker, Bill	Kalamazoo
Craft, Russ	Alabama
Ferrante, Jack	None
Giannelli, Mario	Boston College
Green, John	Tulsa
Hix, Billy	Arkansas
Jarmoluk, Mike	Temple
Kilroy, Frank	Temple
Lindskog, Vic	Stanford
Mackrides, Bill	Nevada
Magee, John	Rice
MacDowell, Jay	U. of Washington
Maronic, Dusan	None
McHugh, Pat	Georgia Tech
Muha, Joe	V. M. I.
Myers, Jack	U. C. L. A.
Parmer, Jim	Oklahoma A. & M.
Patton, Cliff	T. C. U.
Pihos, Pete	Indiana
Reagan, Frank	Pennsylvania
Sandifer, Dan	Louisiana State
Sears, Vic	Oregon State
Stickel, Walt	Pennsylvania
Sutton, Joe	Temple
Thompson, Tommy	Tulsa
Van Buren, Steve	L. S. U.
Willey, Norman	Marshall
Wistert, Al	Michigan
Wojciechowicz, Alex	Fordham
Ziegler, Frank	Georgia Tech

GIANTS

NAME	COLLEGE
Austin, Bill	Oregon State
Baker, Jon	California
Cannady, John	Indiana
Clay, Randall	Texas
Conerly, Charles	Mississippi
DeRogatis, Al	Duke
Duncan, Jim	Wake Forest
Ettinger, Don	Kansas
Griffith, Forrest	Kansas
Jackson, Bob	N. Carolina A & T
Landry, Tom	Texas
Mastrangelo, John	Notre Dame
McChesney, Bob	Hardin Simmons
Milner, Bill	Duke
Mote, Kelly	Duke
Ostendarp, James	Bucknell
Poole, Ray	Mississippi
Price, Eddie	Tulane
Rapacz, John	Oklahoma
Roberts, Gene	Chattanooga
Roman, George	Western Reserve
Rowe, Harmon	San Francisco
Sanchez, John	San Francisco
Schnellbacher, Otto	Kansas
Scott, Joe	San Francisco
Skladany, Leo	Pittsburgh
Sulaitis, Joe	Dickinson H. S.
Swiacki, Bill	Columbia
Tidwell, Travis	Auburn
Tunnell, Emlen	Iowa
Weinmeister, Arnie	Washington
White, James	Notre Dame
Williams, Ellery	Santa Clara
Woodard, Dick	Iowa

**Convene
here**



for that mellow nip—

**Good taste...good
cheer...good fellow-
ship!**

*The***HUNT***Room*

Bennett E. Tousley
Vice-President and General Manager

THE *Bellvue-
Stratford*

Broad & Walnut Streets Philadelphia, Pa.

"New in face... Old in grace"

Pictures of Your FAVORITE PLAYERS

Glossy prints of your favorite Eagles players are now available for only 25c.

If you live out of town you may buy them by mail. Just send 25c for each picture you desire plus postage of 6c and they will be sent to you.

VISIT OR WRITE:

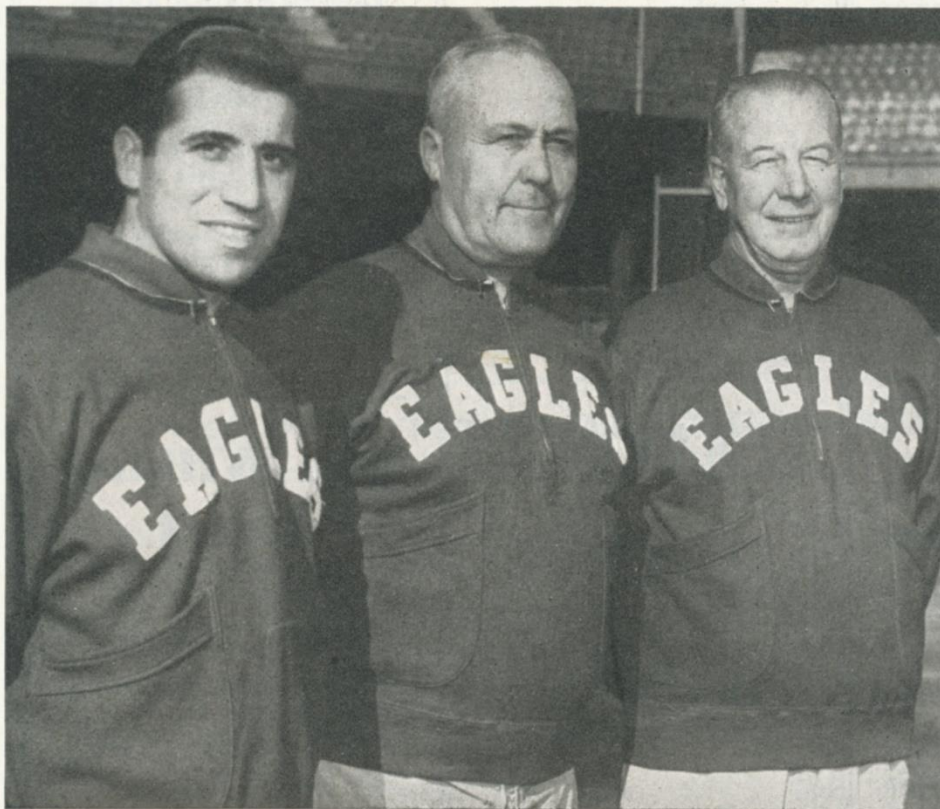
The Philadelphia Eagles, Inc.

22 South 17th Street

Philadelphia 3, Pa.

The Official Watch for Timing Today's Game is Longines—"The World's Most Honored Watch."

Philadelphia Eagles Coaching Staff



The men who guided the Eagles to their Eastern Championship in 1947 and the World Championship in 1948 and 1949. Left to right, LARRY CABRELLI, end coach; JOHN KELLISON, line coach; EARLE NEALE, tenth year as head coach for the Eagles.

REDDY KILOWATT
Your Electric Servant
ALL-AMERICAN CHOICE

SCORES EVERY TIME



Just flip the switch
and electricity snaps into action . . .
saves work, saves time.

PHILADELPHIA ELECTRIC COMPANY

A BUSINESS-MANAGED, TAX-PAYING UTILITY COMPANY OWNED BY MORE THAN 100,000 STOCKHOLDERS

CHICAGO HOME OF
THE PHILADELPHIA EAGLES

DEL PRADO HOTEL

53rd St. at Lake Michigan

The Huntington

PASADENA, CALIFORNIA

•
The most distinguished
address in Southern California

HOTELS PATRONIZED by the WORLD CHAMPION EAGLES

EAGLES HEADQUARTERS
IN NEW YORK CITY
**HOTEL
CONCOURSE PLAZA**
Grand Concourse and 161st Street
A few short blocks from Polo
Grounds and Yankee Stadium.

•
under same management
**HOTEL
MARTINIQUE**
32nd Street at Broadway
1 block from Penn Station
Subway direct to Polo Grounds

The Willard Hotel

WASHINGTON, D. C.

(Completely Airconditioned)

Douglas A. Stalker, Vice President

WASHINGTON HOME
OF THE EAGLES

HAUGHTON WEYMOUTH & BISHOP

•
INSURANCE BROKERS FOR THE EAGLES

•
FIDELITY-PHILADELPHIA TRUST BUILDING
PHILADELPHIA 9, PA.

Philadelphia Eagles Football Club

Owned and operated by Philadelphians

ADMINISTRATIVE STAFF

JAMES P. CLARK *President*
FRANK L. McNAMEE *Treasurer*
PAUL C. LEWIS *Secretary*
VINCENT A. McNALLY *Asst. Gen. Mgr.*
ED HOGAN *Publicity Director*
JOSEPH A. DONOGHUE *Ticket Manager*
SAM LANGE *Entertainment Director*
FRED SCHUBACH *Equipment Manager*

COACHING STAFF

EARLE (GREASY) NEALE *Head Coach*
JOHN S. KELLISON *Assistant Coach*
LARRY A. CABRELLI *Assistant Coach*
FRANK WIECHEC *Trainer*

OFFICE

22 South Seventeenth Street
Philadelphia 3, Pa.
Telephone: RIttenhouse 6-1323



NATIONAL FOOTBALL LEAGUE STATISTICS

LEADING GROUND GAINERS

	Atts.	Yds. Gained	Long Gain	Ave.
Motley, Cleveland	136	762	69	5.6
Ziegler, Philadelphia	154	682	52	4.4
Geri, Pittsburgh	172	627	47	3.6
Price, N. Y. Giants	107	600	61	5.6
Van Buren, Philadelphia	168	588	41	3.5

Longest Gains: 96 yds, James Spavital, Baltimore vs Green Bay, 11/5/50 TD.

96 yds, Bob Hoernschemeyer, Detroit vs N. Y. Yanks, 11/23/50 TD.

LEADING PASSERS

	*Stdg.	Atts.	Com.	Yds. G	TdP	Pct. Com.	LP	Int.	Ave. Gain Yds.
Van Brocklin, Los Angeles.....	1	233	127	2061	18	54.5	58	14	8.85
Ratterman, N. Y. Yanks.....	2	273	131	2089	21	48.0	69	23	7.65
Geri, Pittsburgh	3	101	38	766	5	37.6	68	14	7.58
Layne, Detroit	4	292	136	2159	16	46.6	82	17	7.39
Graham, Cleveland	5	221	114	1622	10	51.6	80	19	7.34

Longest Completion: 85 yds, Tobin Rote, Green Bay vs N. Y. Yanks, 10/19/50 TD.

*Standings based on average gain per pass attempted.

LEADING PUNTERS

	*Stdg.	No.	Ave. Dist.	Longest
Morrison, Chi Bears	1	50	43.8	65
Gillom, Cleveland	2	63	43.4	66
Sanders, N. Y. Yanks	3	69	42.4	63
Reagan, Philadelphia	4	50	41.5	68
Smith, Detroit	5	23	41.3	56

Longest Punt: 76 yds, Jim Hardy, Chi Cards vs Chi Bears, 12/3/50.

*Standings computed on average distance.

KICKOFF RETURN LEADERS

	*Stdg.	No.	Yds. Ret.	Ave. Dist.	Longest	Touchdowns
Triplett, Detroit	1	8	411	51.4	97	1
Craft, Philadelphia	2	9	309	34.3	103	1
Smith, Los Angeles	3	22	742	33.7	97	3
Chandnois, Pittsburgh	4	12	351	29.3	60	0
Saenz, Washington	5	12	347	28.9	71	0

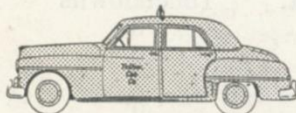
Longest Return: 103 yds, Russ Craft, Philadelphia vs Los Angeles, 10/7/50 TD.

*Standings computed on basis of average return.

INTERCEPTION LEADERS

	No.	Yds. Ret.	Touchdowns	Longest
Lewis, Los Angeles	12	275	0	36
Sanders, N. Y. Yanks	12	172	0	29
Doll, Detroit	12	163	1	38
Sutton, Philadelphia	8	67	0	32
James, Cleveland	8	51	0	34

Longest Return: 99 yds, George Buksar, 18 yds. lateral to Ernest Zalejski, 81 yds, Baltimore vs Washington 11/26/50 TD.



YELLOW CAB COMPANY OF PHILADELPHIA

1950 League Schedule

DATE	CLUBS	SCORES
Sept. 16	Cleveland at Philadelphia (N)	35-10
Sept. 17	Chicago Bears at Los Angeles	24-20
" "	Detroit at Green Bay	45-7
" "	N. Y. Giants at Pittsburgh	18-7
" "	N. Y. Yanks at San Francisco	21-17
" "	Washington at Baltimore	38-14
Sept. 22	N. Y. Yanks at Los Angeles (N)	28-45
Sept. 24	Cleveland at Baltimore	31-0
" "	Chi. Bears at San Francisco	32-20
" "	Philadelphia at Chi. Cardinals	45-7
" "	Pittsburgh at Detroit	7-10
" "	Washington vs. Green Bay at Milwaukee	21-35
Sept. 29	Detroit at N. Y. Yanks (N)	21-44
Oct. 1	Chicago Bears at Green Bay	21-31
" "	Los Angeles at San Francisco	35-14
" "	N. Y. Giants at Cleveland	6-0
" "	Pittsburgh at Washington	26-7
Oct. 2	Baltimore at Chi. Cardinals (N)	13-55
Oct. 7	Cleveland at Pittsburgh (N)	30-17
" "	Los Angeles at Philadelphia (N)	20-56
Oct. 8	Chi. Cardinals at Chi. Bears	6-27
" "	Green Bay at N. Y. Yanks	31-44
" "	N. Y. Giants at Washington	21-17
" "	San Francisco at Detroit	7-24
Oct. 12	San Francisco at N. Y. Yanks (N)	24-29
Oct. 15	Chi. Cardinals at Cleveland	24-34
" "	Green Bay at Chicago Bears	14-28
" "	Los Angeles at Detroit	30-28
" "	Philadelphia at Baltimore	24-14
" "	Pittsburgh at N. Y. Giants	17-6
Oct. 19	Green Bay at N. Y. Yanks	17-35
Oct. 22	Baltimore at Los Angeles	27-70
" "	Chi. Cardinals at Washington	38-28
" "	Cleveland at N. Y. Giants	13-17
" "	Detroit at San Francisco	27-28
" "	Philadelphia at Pittsburgh	17-10
Oct. 29	Baltimore at San Francisco	14-17
" "	Chicago Bears at N. Y. Yanks	27-38
" "	Detroit at Los Angeles	24-65
" "	N. Y. Giants at Chi. Cardinals	3-17

1950 League Schedule

DATE	CLUBS	SCORES
" "	Pittsburgh at Cleveland	7-45
" "	Washington at Philadelphia	3-35
Nov. 5	Chicago Bears at Detroit	35-21
" "	Cleveland at Chi. Cardinals	10- 7
" "	Green Bay at Baltimore	21-41
" "	Pittsburgh at Philadelphia	9- 7
" "	San Francisco at Los Angeles	21-28
" "	Washington at N. Y. Giants	21-24
Nov. 12	Baltimore at Pittsburgh	7-17
" "	Chi. Cardinals at N. Y. Giants	21-51
" "	Los Angeles vs. Green Bay at Milwaukee	45-14
" "	N. Y. Yanks at Chicago Bears	20-28
" "	Philadelphia at Washington	33- 0
" "	San Francisco at Cleveland	14-34
Nov. 19	Chi. Cardinals at Philadelphia	14-10
" "	Green Bay at Detroit	21-24
" "	Los Angeles at N. Y. Yanks	43-35
" "	N. Y. Giants at Baltimore	55-20
" "	San Francisco at Chi. Bears	0-17
" "	Washington at Cleveland	14-20
Nov. 23	Pittsburgh at Chi. Cardinals	28-17
" "	N. Y. Yanks at Detroit	14-49
Nov. 26	Baltimore at Washington	28-38
" "	Los Angeles at Chicago Bears	14-24
" "	Philadelphia at N. Y. Giants	3- 7
" "	San Francisco at Green Bay	21-25
Dec. 3	Chi. Bears at Chi. Cardinals	10-20
" "	Detroit at Baltimore	45-21
" "	Green Bay at Los Angeles	14-51
" "	N. Y. Yanks at N. Y. Giants	7-51
" "	Philadelphia at Cleveland	7-13
" "	Washington at Pittsburgh	24- 7
Dec. 10	Baltimore at N. Y. Yanks	
" "	Chi. Cardinals at Pittsburgh	
" "	Cleveland at Washington	
" "	Detroit at Chicago Bears	
" "	Green Bay at San Francisco	
" "	N. Y. Giants at Philadelphia	
Dec. 17	Championship Playoff in home city of American Conference Champion	

why the Eagles prefer *Adams* clothes!



Tommy Thompson:

"They fit me to a T"



Steve Van Buren:

"Yardage ahead in value"



Pete Pihos:

"No end of big selections"



Clyde Scott:

"Styling that's just my speed"



Cliff Patton:

"Extra points in fine tailoring"



Coach Neale

and the team:

"Champions all the way"

Adams

CLOTHES

PHILADELPHIA

1013 MARKET ST. • 4628 FRANKFORD AVE.

other stores centrally located in

NORRISTOWN • WILMINGTON

CHESTER • ALLENTOWN

made by Adams • sold by Adams

• worn by America's best-dressed men



IT ALL
DEPENDS
ON WHERE
YOU SIT...



Reserved seats for the game are nice to have—but not much good if you're stuck in a traffic jam 10 blocks away from the stadium, arguing about a crumpled fender.

It's surprising how often it happens on the way to and from the football games . . . when everyone's impatient to make time through heavy traffic, impatient horn honkers, scurrying pedestrians and "No Parking" signs.

Why not go to the game the easy way? Let PTC take you skillfully and quickly through the crowds. Saves cars! Time! Temper! And expense!

**PTC PHILADELPHIA
TRANSPORTATION COMPANY**

STANDING OF TEAMS

AMERICAN CONFERENCE

	W.	L.	T.	Pct.
New York Giants	9	2	0	.818
Cleveland Browns	9	2	0	.818
PHILADELPHIA EAGLES	6	5	0	.545
Chicago Cardinals	5	6	0	.455
Pittsburgh Steelers	5	6	0	.455
Washington Redskins	3	8	0	.273

NATIONAL CONFERENCE

	W.	L.	T.	Pct.
Los Angeles Rams	9	3	0	.750
Chicago Bears	8	3	0	.727
New York Yanks	6	5	0	.545
Detroit Lions	6	5	0	.545
Green Bay Packers	3	8	0	.273
San Francisco 49'ers	2	9	0	.182
Baltimore Colts	1	10	0	.091

OFFICIAL TIMING WATCH FOR THE EAGLES-GIANTS FOOTBALL GAME

Longines

The World's Most Honored Watch

THE WORLD STANDARD OF ACCURACY FOR SPORTS
TIMING . . . 10 WORLD'S FAIR GRAND PRIZES, 28 GOLD
MEDALS . . . HIGHEST OBSERVATORY ACCURACY HONORS



Product of

Longines-Wittnauer Watch Company

SINCE 1866, WATCHES OF THE HIGHEST CHARACTER
LONGINES WATCHES from \$71.50; WITTAUER WATCHES from \$34.75

