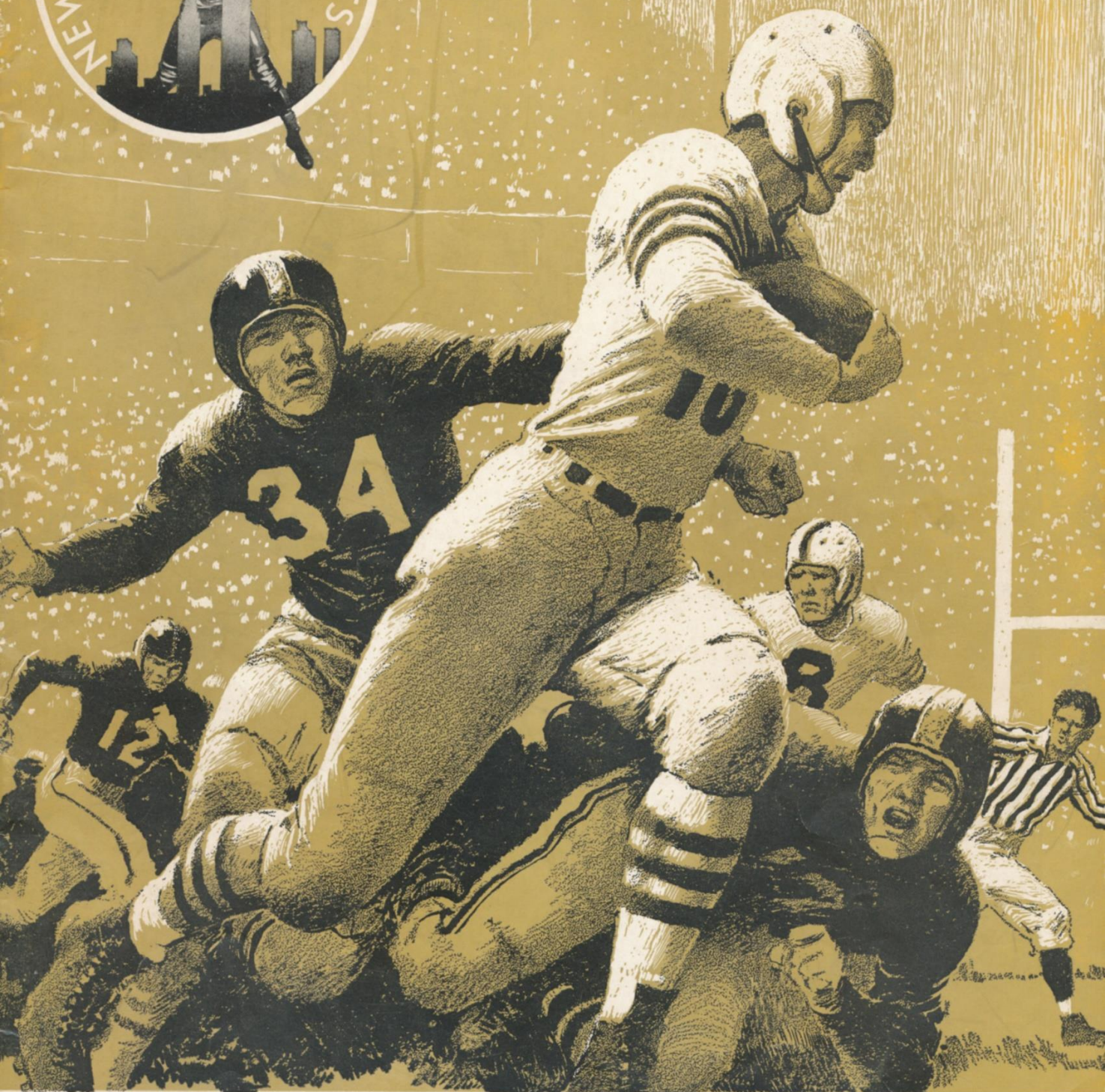




OFFICIAL PROGRAM • THIRTY-FIVE CENTS



PITTSBURGH

STEELERS

POLO GROUNDS • NOVEMBER 15, 1953



LUCKIES TASTE BETTER!

Cleaner, Fresher,
Smoother!

Be Happy

GO LUCKY!



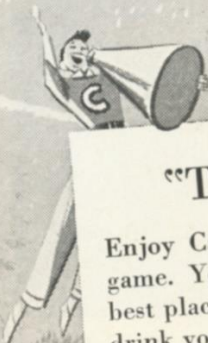
COPR., THE AMERICAN TOBACCO COMPANY

Suits your taste
to a



"The best of them all"

Enjoy Canada Dry at the game and after the game. You'll find it—to your pleasure—at the best places. You'll also find it the most delicious drink you've ever tasted.



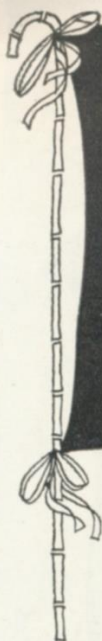
Longines

The World's Most Honored Watch

ACCEPTED AS OFFICIAL WATCH
FOR TIMING
CHAMPIONSHIP SPORTS EVENTS
IN ALL FIELDS ALL OVER THE WORLD
INCLUDING THIS GAME

*Product of
Longines-Wittnauer Watch Company*





GO GIANTS GO



BACK YOUR NEW YORK GIANTS!

Throughout the 1953 season you'll see football at its finest at the Polo Grounds when you back your New York Giants. Cheer your team on to victory as the Giants meet the top teams in the National Football League. And if you are not at present a season ticket holder, stop in at the box office while here, and investigate all the advantages of season tickets for 1954.

Tune in...Television and Radio!

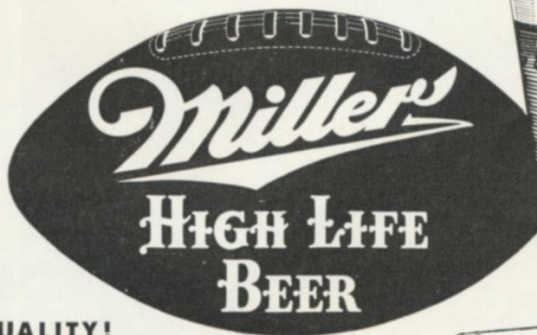


When you can't get out to the game in person, follow the Giants on Television and Radio. Miller High Life again will be bringing you the play-by-play telecasts and radio broadcasts over an extensive network of Eastern stations. Consult your newspaper for times and dates of all Miller High Life broadcasts and telecasts.

Enjoy Life with Miller High Life!

At the game, at home or at your favorite tavern or restaurant, treat yourself and your friends to an extra measure of pleasure with Miller High Life, the Champagne of Bottle Beer.

THE NATIONAL CHAMPION OF QUALITY!





Pick the WINNER!

New York Giants ball carrier heads for paydirt as teamwork opens hole for touchdown against New York Yanks in Polo Grounds contest. Notice converging Yanks closing in too late.

Prest-o-lite hi-level Battery

***needs water only
3 times a year***

IN NORMAL CAR USE

LASTS LONGER, TOO !



Prest-O-Lite Battery Company, Inc., Toledo 1, Ohio

CAMEL

America's most popular cigarette!



GIANTS BACK TO A-FORMATION

TWO striking changes are Polo Grounds probabilities this afternoon. One is the return in force of the Giants to the A formation, a single wing offense invented by Steve Owen in 1937 and used to win league titles in '38, '39, '41, '44, and '46. The other is the appearance of Kyle Rote and/or Frank Gifford in the passer-runner role of A formation tailback.

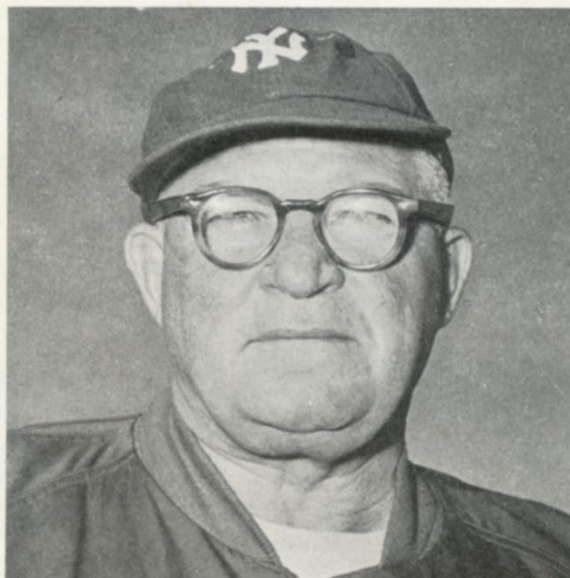
This is the formation from which Ed Danowski passed so successfully back in the thirties. It helped Tuffy Leemans and Bill Paschal to three rushing championships. It is the formation from which Ward Cuff ran so fearsomely from wingback.

The Giants switched to the T in 1949 but the A was never wholly abandoned. It was Owen's baby and he inserted it into games unexpectedly from time to time to win some startling victories. This season the Swing T, a product of several years' work, was to have embraced both A and T setups.

Now it is back to the A for the Giants, not for surprise or effect but for bread and butter yardage. It is a change forced by circumstance.

Arnold Galiffa, Giant quarterback, will not play today. He may see no action again this season. He has a fracture of the transverse process of the spine, sustained last week against the Eagles.

The transverse process is a small bone jutting off the lower portion of the vertebrae. This injury



STEVE OWEN

is an old associate of the Giants who lost three players to it on three successive Sundays in 1951, Bill Stribling, Harmon Rowe and Travis Tidwell.

The loss of Galiffa puts the offensive burden squarely on Charley Conerly, with no other quarterback to relieve him. But Rote and Gifford, who could not fulfill the T quarterback role are more than adequate replacements as A formation tailbacks. Both were passing tailbacks in college. Both passed for touchdowns last year.

And of course both are runners, who, when fading to pass, can never be rushed too recklessly by enemy linemen. Gifford is, in addition, a quick kick threat.

Thus the return to the A will give the Giants maximum running effectiveness and better pass protection, all of which equals an improved attack. It will also utilize two great players, Gifford and Rote, to the maximum of their abilities.

So it's back to the A for the Giants. The A may not win any championships this season. But it will have much to say as to which contenders meet in the playoff game.

The Giants play Washington, Philadelphia, Cleveland and Detroit after today. None, particularly the red-hot Eagles and the Lions, who are tied with Los Angeles and San Francisco in the Western Conference can afford defeat.

ATTENTION FANS!

For the comfort and convenience of those attending Giant home games, it is requested that all ticket-holders take their seats by way of the entrance ramps leading to their own sections.

These entrance ramps are clearly marked. Using them will take you to your seat by the most direct route and with a minimum of confusion.

Give yourself—and the other fellow—a break and avoid walking in front of other sections while going to your seat.

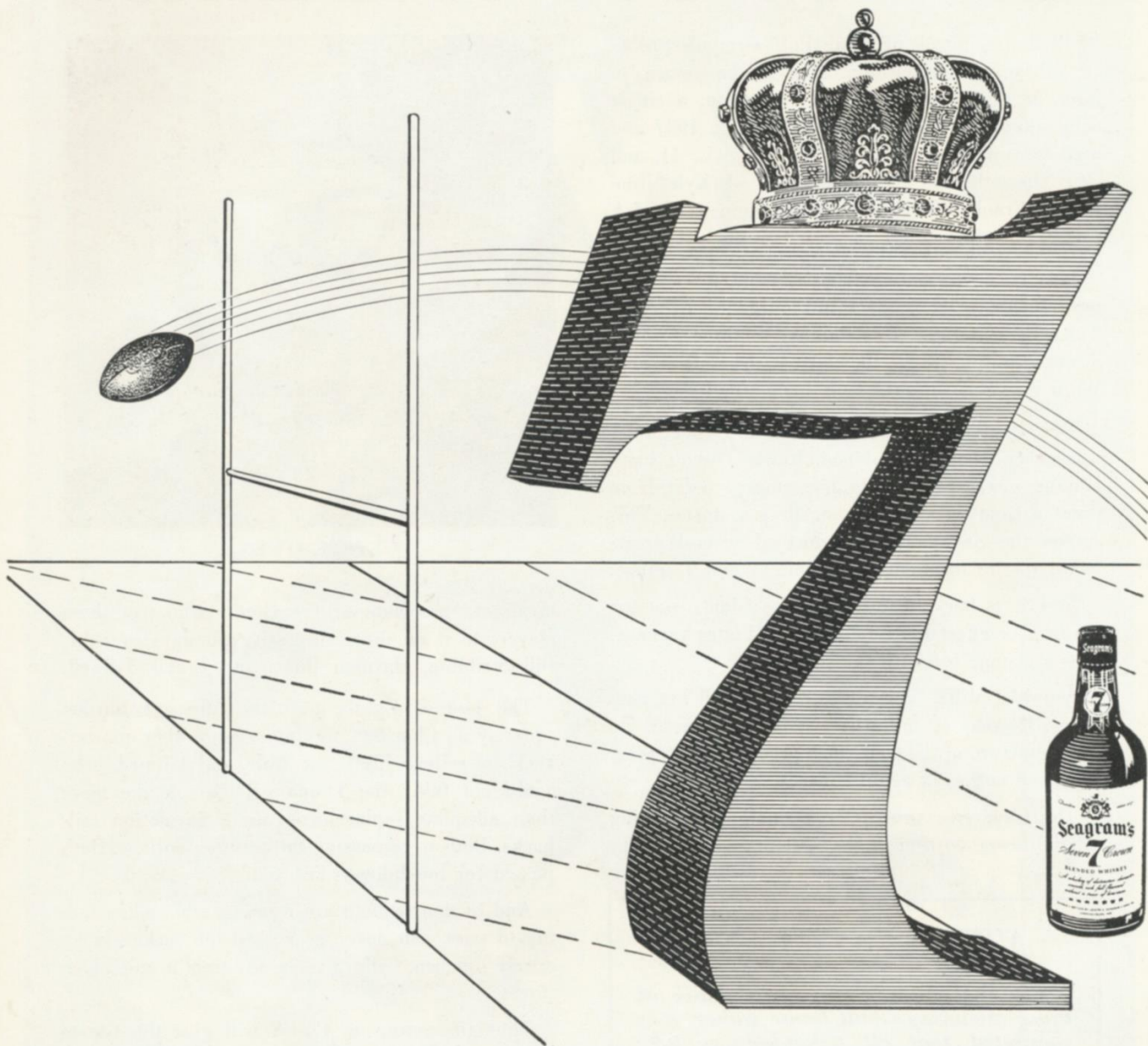
This also applies in leaving the Polo Grounds before the end of a game. The quickest way out is by the nearest ramp.

PLEASE COOPERATE!

PLEASE COOPERATE!

1920 — 34th Year, National Football League — 1953

This book is published by HARRY M. STEVENS, Inc., 320 Fifth Avenue, New York 1, N. Y.



A Sure Point!

You're always on the winning side when you make a Sure point of ordering Seagram's 7 Crown. After the game, enjoy the champion smoothness and taste of this all-American favorite.

Say Seagram's and be Sure

Seagram's 7 Crown. Blended Whiskey. 86.8 Proof. 65% Grain Neutral Spirits. Seagram-Distillers Corp., N. Y.



FRANK GIFFORD . . . Gridiron ace.



FRANK GIFFORD . . . Actor. This is a scene from Universal-International's new picture, "All-American," in which the Giant halfback plays a leading role. At the moment, Frank is having a bit of trouble with cinema star Tony Curtis.

GIFFORD: *Giant of Many Parts*

THERE is little doubt today as to who is the most versatile Giant on the field. Players, coaches and most of the fans, too, say: Frank Gifford.

The former Southern California All-American is just 23 years old. He has been a Giant less than two seasons. But already he has established a reputation for dependability, durability and versatility unmatched in the National Football League.

Gifford runs, punts, passes, kicks extra points and field goals. He is extremely fast, a vicious tackler, a sure fingered pass catcher. In addition, he is so fine a defensive player that Coach Steve Owen rarely gives him opportunity anymore to display his offensive talents.

This afternoon you will see Gifford as one of the sturdy spokes of the Giant umbrella defense and as deep man when the Steelers punt or kick off. If the occasion presents itself, you might also see him on offense, where last year as a rookie he gained 116 yards rushing, completed one touchdown pass and caught five passes.

And Gifford is no slouch off the field. New Yorkers will see him soon starring in the movie "All American" with Tony Curtis and Herman Hickman. In the movie, Gifford plays fullback to Curtis' quarterback. He is somewhat of a villain and leading up to the finale Curtis knocks him into a swimming pool for his villainy.

Incidentally, Gifford, an accomplished college quarterback before he became a Giant halfback, taught Curtis all the actor knows about playing quarterback. The two spent long morning hours while the picture was being produced practicing ball handling, fading to pass, etc. Three quarters of Gifford's salary came for his acting and good looks. The other quarter was for instructing Curtis in the quarterback role. In the process the two became fast friends and Curtis taught Gifford some of the magic tricks he had learned for a prior role as Houdini.

On the football field Gifford is somewhat of a Houdini himself. He comes up from the secondary at dazzling speed to make tackles and interceptions or, at the last second, to bat down sure touchdowns. If pro football were a one-platoon operation, Coach Owen is on record as saying that Gifford would be the most valuable back in the league.

The handsome halfback is 6 foot 1 and 195 pounds. He, his wife, Maxine, and their baby boy live in Los Angeles in the off season. Acting is only one of Frank's off-season activities. He is not thinking of the screen as a career but he is not entirely decided on what else he would like to do.

In the mean time he can do anything on a football field. And Giant fans are glad of it.

MELROSE *RARE*

The
whiskey
you'll
Personally
Recommend

So exceptional is Melrose Rare that you'll be proud to personally recommend it. That is how the reputation of Melrose has grown . . . one man telling another . . . and another . . . since 1885.

NATIONAL LEAGUE LEADERS

Rushing	Perry, San Francisco	115 for 599 yards.
Passing	Graham, Cleveland	96 for 1,603 yds.
Receiving	Nickel, Pittsburgh	40 for 490 yds.
Scoring	Groza, Cleveland	57 pts.
Punting	Brady, Pittsburgh	48.9-yd. avg.
Punt Returns	Carmichael, Green Bay	11 for 148 yds.
Kick-Off Returns	Arenas, San Francisco	8 for 340 yds.
Interceptions	Christensen, Detroit	7 for 167 yds.



Full 90 proof

\$4⁸⁵ \$3¹⁰
4/5 QT. PINT

BLENDED WHISKEY, 60% NEUTRAL GRAIN SPIRITS. MELROSE DISTILLERS, INC., NEW YORK, N. Y.

Meet the Giants



Frank Gifford

Frank Gifford (16), second-year Giant from Southern California, is perhaps the most versatile back on Steve Owen's squad. He performed brilliantly on offense as a rookie last year, was shifted to defense in an emergency and now is a mainstay of the umbrella secondary. He's a deadly tackler, a vigilant pass defender and a dazzling broken-field runner on punt returns and interceptions. He also has blossomed out as a field goal kicker.

Ray Krouse (70) has established himself as a solid and dependable tackle in three seasons with the Giants. The big fellow from Maryland—he weighs 250 pounds—is serviceable both ways but has been concentrating on defense this year. Amazingly agile for his size, he's a relentless crasher who keeps plowing in to raise ructions in the opposing backfield.



Ray Krouse



Dick Yelvington

Dick Yelvington (72) won his spurs with the Giants as a rookie last year and today rates as a key performer in Steve Owen's offensive line. The big blond 230-pounder from Georgia has an explosive charge and makes good use of his speed and weight as a blocker. When Rote, Price and Grandelius break away, you can bet that Dick has had a lot to do with spring them.

Bill Albright (75), 232-pound graduate of Wisconsin, has been a valuable member of the Giants for three seasons. Fast and rugged, he has been variously used as a running guard, middle guard on defense and a line-backer. Perhaps his biggest thrill as a Giant came in the first 1953 game with the Cardinals, when he pounced on a Chicago fumble and rushed the ball across for a touchdown.



Bill Albright



Bill Stribling

Bill Stribling (81) is carrying on an old tradition that the Giants must have at least one star end from Ole Miss. Now in his third season at the Polo Grounds, Bill has come into his own as a pass-grabber and is a favored target of Charley Conerly and Arnie Galiffa. Fast and sure-handed, he specializes in fielding long tosses and is a breakaway threat after getting the ball.

George Kennard (67) came out of Kansas as a rookie to make the grade with the Giants last year and currently is understudying Bill Austin at running guard. If Kennard were heavier, there would be no keeping him out of the line-up, for he is one of the fastest Giant linemen and hits as hard as anyone. But at 205 pounds, he lacks the straight ahead bulldozing power to play regularly up front in football's big league.



George Kennard

AUTOGRAPH COLLECTORS: "Meet the Giants" will be a weekly program feature.

1920 — 34th Year, National Football League — 1953

PITTSBURGH STEELERS—LINE UP

KICK-
2:05 P

OFFENSE

R. H. Chandnois (49)		F. B. Rogel (33)		Q. B. Finks (7)		L. H. Mathews (25)	
R. E. Nickel (81)	R. T. Hughes (65)	R. G. McFadden (64)	C. Walsh (56)	L. G. Schweder (66)	L. T. Gaona (72)	L. E. Barker (89)	

DEFENSE

L. E. Tarasovic (82)		L. T. Ferry (78)		M. G. Dodrill (60)		R. T. Stautner (70)		R. E. McPeak (84)	
L. H. DeCarlo (26)	L. L. B. Flanagan (57)	SAFETY Calvin (35)		M. L. B. Hogan (63)	R. L. B. Matuszak (62)	R. H. Butler (80)			

Steeler Roster

No.	Name	Position	Weight	Height	College	Yrs. Pro
7	Finks, Jim	QB	175	6:00	Tulsa	5
14	Marchibroda, Teddy	QB	170	5:10	St. Bonaventure-Detroit	1
18	Brady, Pat	QB	195	6:01	Nevada-Bradley	2
25	Mathews, Ray	HB	185	6:00	Clemson	3
26	DeCarlo, Art	HB	195	6:03	Georgia	1
27	Brandt, Jim	HB	200	6:01	St. Thomas	2
33	Rogel, Fran	FB	200	5:11	Penn State	4
34	Fullerton, Ed	B	185	5:11	Maryland	1
35	Calvin, Tom	HB	200	6:00	Alabama	2
39	Elter, Leo	FB	200	5:10	Duquesne-Villanova	1
49	Chandnois, Lynn	HB	205	6:02	Michigan State	4
56	Walsh, Bill	C	235	6:02	Notre Dame	5
57	Flanagan, Richard	G	215	6:00	Ohio State	5
60	Dodrill, Dale	G	210	6:01	Colorado A. and M.	3
61	Tepe, Louis	C	200	6:02	Duke	1
62	Matuszak, Marvin	T	225	6:03	Tulsa	1
63	Hogan, Darrell	G	210	5:10	Trinity	5
64	McFadden, Marvin	G	215	6:00	Michigan State	1
65	Hughes, George	T	225	6:01	William and Mary	4
66	Schweder, John	G	225	6:01	Pennsylvania	4
70	Stautner, Ernie	T	235	6:01	Boston College	4
72	Gaona, Robert	T	235	6:03	Wake Forest	1
75	Bolkovac, Nick	T	230	6:01	Pitt	1
76	Hegarty, Bill	T	240	6:04	Villanova	1
77	Palmer, Tom	T	240	6:02	Wake Forest	1
78	Ferry, Lou	T	245	6:02	Villanova	4
80	Butler, Jack	E	195	6:00	St. Bonaventure	3
81	Nickel, Elbie	E	195	6:01	Cincinnati	7
82	Tarasovic, George	E	240	6:04	Louisiana State	2
83	Alderton, John	E	200	6:01	Maryland	1
84	McPeak, Bill	E	200	6:01	Pitt	5
88	Sulima, George	E	200	6:02	Boston University	2
89	Barker, Ed	E	195	6:03	Washington State	1

GIANT SPEC

Punting—Avinger (34),
PAT and FG—Clay (12)
Kick-Offs—Rote (44), G

OFFICIAL

Referee
William Downes (3)

Umpire
Carl Brubaker (14), C

Head Lines
Samuel Pecoraro (37),

Back Jud
Victor Mettler (52),

Field Jud
Charles Sweeney (22),

STEELER SPEC

Punting—Brady (18), Cha
PAT and FG—Bolkovac (1)
Kickoffs—Nickel (81), B

STEELER STAFF: Joe Bach, head coach; Walt Kiesling, Charles Cherundolo, Edgar Jones, assistant coaches; Mayo Donelli, trainer; Jack Lee, assistant trainer and equipment manager; Dr. P. H. A. Faix, physician.

Watch the GIANT QUARTERBACK HUDDLE every

The Official Watch for Timing Today's Game is Lo



Compare.

SW

CALVERT RESERVE BLENDED WHISKEY — 86.8 PROOF —

2K-OFF
5 P.M.

NEW YORK GIANTS—LINE UP

OFFENSE

R. H. Rote (44)		F. B. Price (31)		Q. B. Conerly (42)		L. H. Grandelius (24)	
R. E. Stribling (81)	R. T. Yelvington (72)	R. G. Austin (60)	C. Rapacz (53)	L. G. Lagod (65)	L. T. Brown (79)	L. E. Anderson (82)	

DEFENSE

L. E. Duncan (86)	L. T. Weinmeister (73)	M. G. Ramona (61)	R. T. Krouse (70)	R. E. Sulaitis (21)
L. H. Landry (49)	SAFETY Tunnell (45)	L. L. B. Woodard (51)	R. L. B. Cannady (52)	R. H. Long (22)

Giant Roster

SPECIALISTS

4), Landry (49).
(12), Rote (44).
, Gifford (16).

CIALS

eree
(3), Illinois Tech
pire
(4), Ohio Wesleyan
linesman
(37), Dallas University
Judge
(52), Notre Dame
Judge
(22), Notre Dame

SPECIALISTS

, Chandnois (49).
vac (75), Nickel (81).
, Bolkovac (75).

No.	Player	Position	Weight	Height	Age	College	Yrs. Pro
12	Clay, Randy	HB	191	6:01	25	Texas	2
16	Gifford, Frank	HB	190	6:01	23	So. California	2
17	Galiffa, Arnold	QB	195	6:02	26	Army	1
21	Sulaitis, Joe	E	215	6:02	32	Dickinson H. S.	10
22	Long, Buford	HB	190	6:01½	21	Florida	1
24	Grandelius, Sonny	HB	195	6:00	23	Michigan State	1
31	Price, Eddie	FB	190	5:11	27	Tulane	4
34	Avinger, Butch	FB	215	6:01	24	Alabama	1
35	Hodel, Merwin	FB	205	6:02	22	Colorado	1
42	Conerly, Charlie	QB	185	6:01	29	Mississippi	6
44	Rote, Kyle	HB	195	6:00	25	So. Methodist	3
45	Tunnell, Emlen	HB	183	6:01	28	Iowa	6
49	Landry, Tom	HB	195	6:01	28	Texas	5
51	Woodard, Dick	C	225	6:01	27	Iowa	4
52	Cannady, John	C	225	6:02	29	Indiana	7
53	Rapacz, John	C	260	6:04	28	Oklahoma	6
55	Wietecha, Ray	C	215	6:01	24	Northwestern	1
60	Austin, Bill	G	225	6:01	24	Oregon State	3
61	Ramona, Joe	G	210	6:01	22	Santa Clara	1
63	Peviani, Bob	G	210	6:01	21	So. California	1
65	Lagod, Chet	G	220	6:02	25	Chattanooga	1
66	Stroud, Jack	G	215	6:01	24	Tennessee	1
67	Kennard, George	G	205	6:00	24	Kansas	2
70	Krouse, Ray	T	250	6:03	26	Maryland	3
72	Yelvington, Dick	T	230	6:02½	26	Georgia	2
73	Weinmeister, Arnie	T	235	6:04	30	Washington	6
75	Albright, Bill	G	232	6:01	24	Wisconsin	3
78	Douglas, DeWayne	T	240	6:03	21	Florida	1
79	Brown, Roosevelt, Jr.	T	245	6:03	21	Morgan State	1
80	Pelfrey, Ray	E	190	6:00	23	E. Kentucky State	3
81	Stribling, Bill	E	205	6:01	26	Mississippi	3
82	Anderson, Cliff	E	215	6:02	24	Indiana	2
86	Duncan, Jim	E	205	6:02	27	Wake Forest	4

very Thursday at 8 P.M. on WABD-TV (Channel 5).

is Longines—"The World's Most Honored Watch."

GIANT STAFF: Steve Owen, Phillips U., head coach; Al Sherman, Brooklyn College, backfield coach; Ed Kolman, Temple, line coach; Jim Lee Howell, Arkansas, end coach; Al DeRogatis, assistant line coach; Sid Moret and John Johnson, trainers; Dr. Francis Sweeny, physician; Dr. Arthur Croker, dentist; Charles Cordero, equipment manager.

...and you'll
witch to Calvert

OF — 65% GRAIN NEUTRAL SPIRITS. CALVERT DISTILLERS CORPORATION, NEW YORK CITY



Be WISE About KING SIZE

**Ask yourself... Do you
have all this with your
present cigarette?**

- Clean, fresh taste after smoking
- Full enjoyment of food
- Freedom from cigarette cough
- Mouth and throat comfort
- All day smoking enjoyment

**If you answer "NO" to ANY of these questions—
IT'S TIME TO CHANGE TO PHILIP MORRIS!**

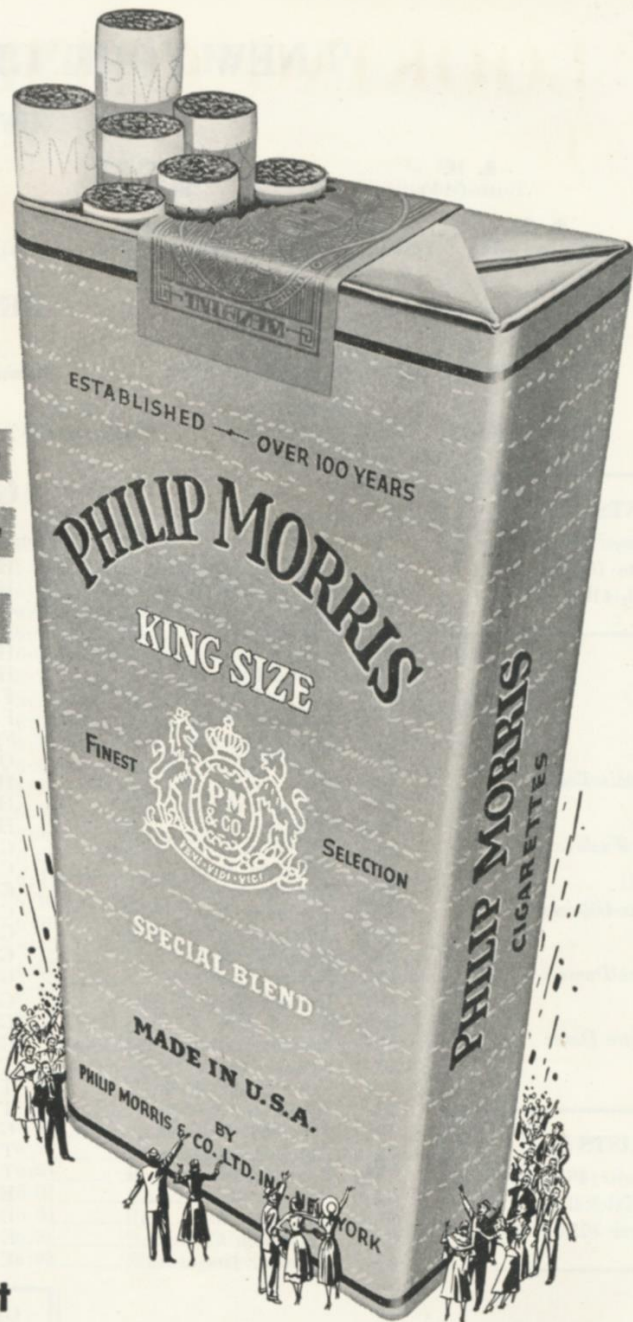


OF THE MANY KING SIZE cigarettes on the market, none is like PHILIP MORRIS KING SIZE. *This King is different... made an exclusive way... the PHILIP MORRIS way... to give you every good thing you want in*

a cigarette. Be wise! If you're not getting *everything* you want from your cigarette—*it's time to change to PHILIP MORRIS! King Size or Regular, if it's PHILIP MORRIS, it's America's finest cigarette!*

**CALL
FOR**

PHILIP MORRIS

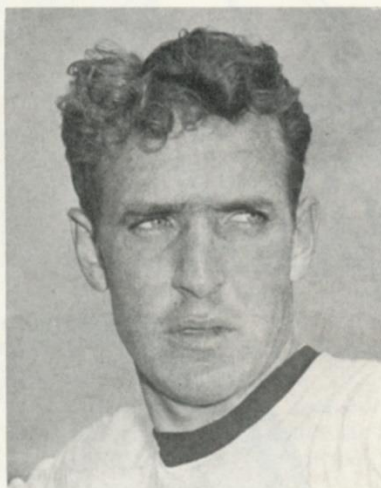


LOOKING OVER THE STEELERS

THE Giants have good reason to respect their opponents of today—the Pittsburgh Steelers. The Men of Steel have been the toughest foe for the Giants since World War II. Pittsburgh has beaten Steve Owen's squad eleven times in seventeen meetings since 1945, at the cost of a couple of divisional titles for the Polo Grounders. By way of adding insult to injury, the Steelers handed the Giants the worst defeat in their long history last season in a 63-7 debacle at Forbes Field last December. On top of that, they knocked off the Giants 24-14 in Pittsburgh a few weeks ago.

Pittsburgh, coached for the second season by Joe Bach, has a typically rugged and hard-hitting team, featuring a high-powered offensive backfield and a rib-cracking defensive line.

The Steeler backfield, rated one of the best in the league, is composed of Jim Finks (7), a sharp-shooting T-passer who threw twenty touchdown bullseyes in 1952; Ray Mathews (25), a feather-footed left half who can run like the wind; Lynn Chandnois (49), perhaps the most feared breakaway runner in the pro



JIM FINKS

game, and Fran Rogel (33), a rip-roaring fullback who ranks among the league's top ground-gainers.

Three other valuable cogs in the Pittsburgh attack are Elbie Nickel (81), a pass-catching end who fakes with such consummate artistry that he is almost impossible to cover; Bill Walsh (56), the choice of the experts as the best blocking center in football's big league for the last couple of seasons, and Pat Brady (18), a prodigious left-footed punter.

Pittsburgh's defensive line, stingier in giving up yardage than any other forward wall in the circuit, arrays as follows from left to right: George Tarasovic (82), Lou Ferry (78), Dale Dodrill (60), Ernie Stautner (70) and George McPeak (84). These boys play for keeps, particularly McPeak.

On the rare occasions when the Steeler line is penetrated Dick Flanagan (57), Darrell Hogan (63) and Marv Matuszak (62), a trio of hard-tackling linebackers, are there to keep matters under control, which they do very well.

If Pittsburgh has a defensive weakness, it is in the back line, where Art DeCarlo (26), Tom Calvin (35) and Jack Butler (80) can be beaten by a well-thrown pass. Charley Conerly clicked with touchdown passes to Randy Clay and Buford Long against this trio at Pittsburgh in October.

The Giants hope that Conerly is on target today because Pittsburgh is mighty hard to dent on the ground. The Giant secondaries had better be alert, too. Chandnois, Mathews and Nickel, in particular, are dangerous from any point on the field.

Statistical Comparison of Today's Rivals

TEAM STATISTICS

	Giants	Steelers
Won-Lost Record	2-5	3-4
Points scored	81	137
Points yielded	122	186
First downs made	69	129
First downs yielded	110	107
Total yards gained	1,208	2,018
Total yards yielded	2,009	2,165
Yards gained, rushing	568	826
Yards yielded, rushing	753	649
Passes attempted	173	266
Passes completed	73	119
Yards gained, passing	805	1,329
Passes had intercepted	23	13
Passes attempted against	213	235
Passes completed against	95	120
Yards yielded, passing	1,389	1,578
Passes intercepted by	12	11
Ball lost, fumbles	6	9
Opponents' fumbles recovered	11	7
Yards lost, penalties	315	320

SERIES RECORD

Giants won 20; Pittsburgh won 13; 2 ties.
Points: Giants 601, Pittsburgh 487.

INDIVIDUAL STATISTICS

Rushing

	Att.	Y.G.	Avg.
Grandelius (24), Giants	88	219	2.5
Rote (44), Giants	27	118	4.4
Price (31), Giants	57	113	2.0
Rogel (33), Steelers	109	424	4.0
Chandnois (49), Steelers	66	268	4.0
Mathews (25), Steelers	31	67	2.0

Passing

	Att.	Comp.	Y.G.	TDs.	Pct.
Conerly (42), Giants	139	63	623	5	45.3
Galiffa (17), Giants	13	4	129	1	30.8
Finks (7), Steelers	240	110	1263	7	45.8

Pass-Receiving

	No.	Y.G.	TDs.
Rote (44), Giants	11	182	2
Stribling (81), Giants	11	114	0
Pelfrey (80), Giants	10	163	2
Nickel (81), Steelers	40	490	3
Chandnois (49), Steelers	24	240	0
Mathews (25), Steelers	18	257	4

Scoring

	TD	FG	PAT	Pts.
Gifford (16), Giants	2	1	1	16
Clay (12), Giants	1	0	9	15
Mathews (25), Steelers	6	0	0	36
Bolkovac (75), Steelers	1	4	17	35

*A famous whiskey
in a fabulous decanter*



It's here! Enjoy it now!
today's **SCHENLEY**
... the best-tasting whiskey in ages
in a crystal-bright holiday decanter
at no additional cost

See how inviting the sleek decanter looks! How wonderfully smooth and satisfying the whiskey tastes! Here is a whiskey you will always serve with pride. For it gives eloquent testimony to your own good taste.

Enjoy Schenley today . . . and order your supply for the holidays. In its handsome gift-box, it's the perfect gift!

The same fine whiskey is available, as always, in the distinctive Schenley round bottle.



BLENDING WHISKEY, 86 PROOF. 65% GRAIN NEUTRAL SPIRITS. ©1953, SCHENLEY DISTRIBUTORS, INC., NEW YORK, N. Y.

REDSKINS HERE NEXT SUNDAY



EDDIE LeBARON

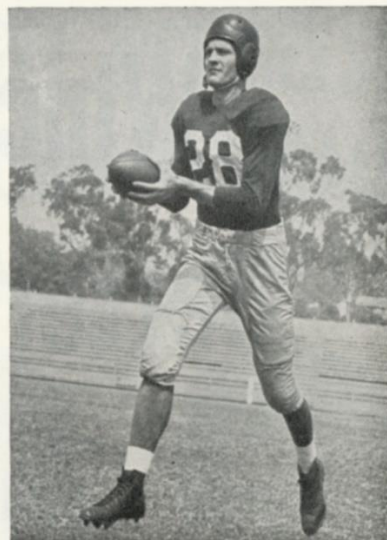
WASHINGTON'S colorful and dynamic Redskins come to the Polo Grounds to furnish the opposition for your Giants next Sunday. Steve Owen's boys have a score to settle with their old rivals from the nation's capital. The Redskins handed the Giants a 13-9 trimming in the first 1953

meeting of the teams at Washington.

No team in the National League has a more imposing collection of "name" backs than Washington. The Redskins' corps of ball-toters includes Jack Scarbath, Maryland's All-America quarterback of 1952; Eddie LeBaron, the flashy little magician from College of Pacific; mercurial Charley (Choo Choo) Justice from North Carolina; Leon (Mule Train) Heath, pile-driving fullback from Oklahoma; Harry Gilmer, pint-size triple threat from Alabama, and that great veteran, Bullet Bill Dudley.

Another important member of the Washington cast is Hugh Taylor. This pass-catching genius, a favored target of Sammy Baugh, is the toughest end to cover in the whole circuit, on the word of no less an authority than Super-Scout Jack Lavelle, who has seen them all. The records show that Taylor always gives the Giants a hard time.

Washington's explosive attack, which features long-range strikes on the ground and through the



HUGH TAYLOR

air, promises a busy afternoon for the Giants. New York-Washington games generally produce something out of the ordinary. These teams have battled it out so often for top honors in the league's Eastern division that their annual November clash at the Polo Grounds has come to be known as the pro loop's "Ivy League" game.

Coming Giant Attractions at Polo Grounds

Buy Choice Seats in Advance

GAME

4

NOV. 22

**WASHINGTON
REDSKINS**

NEW YORK FOOTBALL GIANTS **NEW YORK BASEBALL GIANTS**
11 West 42nd Street 100 West 42nd Street
New York 18, N. Y. New York 18, N. Y.
Mon.-Fri., 9-5; Sat., 9-1 Mon.-Fri., 9-5; Sat., 9-12.

or

Fill Out the Attached Blank

(MAIL ORDERS WILL RECEIVE SPECIAL CONSIDERATION)

GAME

5

NOV. 29

**PHILADELPHIA
EAGLES**

NEW YORK FOOTBALL GIANTS
11 West 42nd St., N. Y. 18, N. Y.

**1953 GIANT GAMES
AT POLO GROUNDS**

Enclosed find \$..... to cover cost
of ☐ Reserved ☐ Lower Box Seats for
the Giant home games marked here →

Name.....

Mail tickets to:

Address.....

City.....Zone.....State.....

No.
of
Ticks.

**NOV. 22
WASHINGTON**

**NOV. 29
PHILADELPHIA**

**DEC. 13
DETROIT**

GAME

6

DEC. 13

**DETROIT
LIONS**

Make Check or Money Order Payable to N. Y. Football Giants

\$4.80 LOWER
BOX SEATS

\$3.60 and \$2.00 RESERVED
SEATS

\$1.25 BLEACHER
SEATS

Tickets Now on Sale at Rear of Lower Section 16 and Eighth Ave. Entrance

Which Cigarette Is Better for Your Health Than All Other Leading Brands?

THE ANSWER IS...

**WORLD'S ONLY CIGARETTE
WITH DOUBLE-BARRELLED
HEALTH PROTECTION**

- 1. New Health-Guard Filter**
- 2. Plus King-Size Length**



King-Size Filter Tip VICEROY

GIANT JOTTINGS

THE recent Armed Forces separation order which may permit Willie Mays to rejoin the baseball Giants for spring training may also permit Don Heinrich, leading collegiate passer of 1950 and '52, to join the Football Giants next August. The order states that an enlisted man who has a job waiting for him and can prove it, is eligible for discharge after having served 21 months of his 24-month hitch.

Heinrich, former University of Washington quarterback, was drafted at the conclusion of the 1952 football season. Thus, he might be available to the Giants for their August exhibition games in 1954.

After topping the NCAA passing statistics in 1950, injuries kept Heinrich out of the 1951 campaign. The Giants picked him in the player draft that winter. Heinrich justified the Giants' faith in him the following season by again leading all NCAA passers.

Arnie Weinmeister, himself a Washington alumnus, thinks Heinrich will become one of the pro game's greatest quarterbacks. Among other things, Don has the advantage of size. He stands 6 feet and weighs 190.

Another bright future Giant prospect is James Gray, East Texas State quarterback, who sets a collegiate passing record every time he makes a completion. At last count, Gray needed only a single touchdown pass to tie Babe Parilli's record for most touchdown passes in a college career.

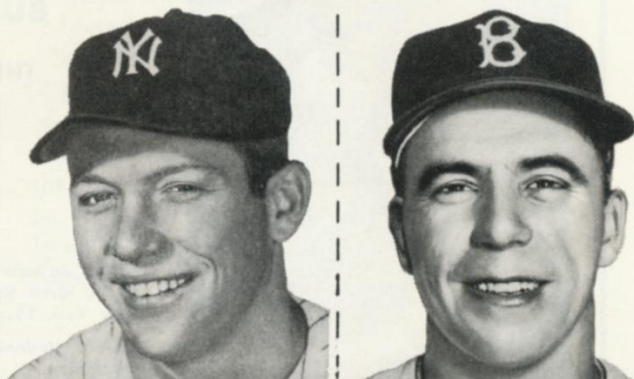
Largely because of Gray's efforts, East Texas State was unbeaten up to last week's game. Gray, 6 feet 3 inches and 200 pounds, was chosen in the player draft by the Giants a year ago.

Today's clash between the Giants and Steelers will find two former Michigan State teammates on opposing sides of the line. Sonny Grandelius and Lynn Chandnois, both of whom have many boosters as the "best Spartan back ever," played together under Biggie Munn at East Lansing... Merwin Hodel, the new Giant fullback from Colorado, is a registered pharmacist and is planning to go into the pharmacy business in New York.

Remaining Giant Home Games

Nov. 22.....	Washington Redskins
Nov. 29.....	Philadelphia Eagles
Dec. 13.....	Detroit Lions

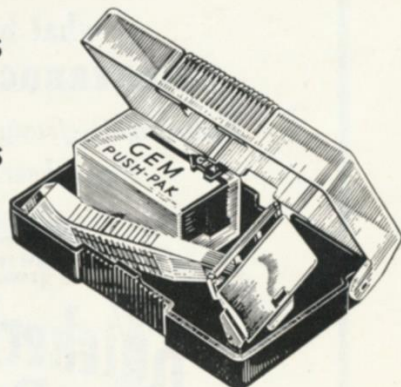
MICKEY MANTLE AND PEE WEE REESE EACH CLAIM BASEBALL'S CLOSEST SHAVE!



"I think the SQUEEZE-PLAY is the closest shave base- ball has to offer." <i>Mickey Mantle</i>	"I think the DOUBLE-PLAY is certainly the closer shave." <i>Pee Wee Reese</i>
--	--

But — both agree that the
closest and cleanest shave
is with a **GEM** because

GEM gives
you more
clean shaves
than any
other single
or double
edge blade.



GEM

RAZORS and BLADES



BOB COUSY, Boston Celtics

—TONIGHT IN MADISON SQUARE GARDEN—
Mikan - Cousy - Zaslofsky - Macauley - Lovellette

SEE BASKETBALL'S GREATEST STARS IN ACTION

**MINNEAPOLIS
LAKERS**

vs.

**BOSTON
CELTICS**

and

**BALTIMORE
BULLETS**

vs.

**NEW YORK
KNICKS**

THESE GAMES WILL NOT BE TELEVISED

**Saturday Night
KNICKS vs. SYRACUSE**

Tickets on sale at Madison Square Garden box office. Mail orders promptly filled. Write Basketball Dept., Madison Square Garden, 307 W. 49th St., New York 19, N. Y.

Special student discounts for Knicks' Garden games. Write for our club ticket plan.

PRICES—\$3.50, \$3, \$2.50, \$2 and \$1.

The overwhelming swing to Knickerbocker proves
**No other beer can match
its magnificent flavor!**

No matter what beer you buy...
what beer you try...

KNICKERBOCKER has no equal!

Extra light—frosty-dry—less "filling" too!

Finest beer you ever drank!



©1953, RUPPERT KNICKERBOCKER BEER AND RUPPERT ALE, JACOB RUPPERT, N. Y. C.

SCOUTING AROUND *With Jack Lavelle*

THIS is a specially good story because it really happened. . . . The Steelers were giving the Browns a whale of a battle at Cleveland last Sunday and, with the score 17-16 against them just before the end of the first half, called time out for a field goal try, square in front of the horns. . . . Bolkovac, who doesn't miss often, tried the kick. . . . He met ball squarely but before it ever got off his foot it was blocked.

The ball went dribbling off to the right, then all of a sudden it popped straight up into the air and hung there. . . . Renfro from way back in defensive halfback came racing along and picked it off. . . . He's a 9.5-second sprinter and the Steelers couldn't even throw sand at him. . . . So he went 79 yards to a touchdown and the score was 24-17 Cleveland instead of 19-17 Pittsburgh.

It's an overworked gag to cite the funny bounces that a football can take but I've never seen a weirder one. . . . That was enough to break your heart and the Steelers, who had been giving better than they were taking up to that point, never did get back into the contest.

You can't sell this team of Joe Bach's short, though. . . . In my book Chandnois is about the most dangerous back in the league. . . . He's a superlative football player

—a real strong character for them in the offensive sense. . . . Mathews is another guy you have to watch every minute, too. . . . Then there's Nickel, who fakes, catches and runs with the ball better than any right end in the loop except maybe Lavelli. . . . And don't forget my left-footed Irish compadre, Brady. . . . He just about punts that ball out of sight.



I wish I honestly could say that I thought someone was going to head off Cleveland. . . . It doesn't look like it now. . . . But I'm still willing to bet that the Browns won't go through undefeated. . . . If they get by the Forty-Niners today, I might even have to hedge on that. . . . And with a neat reverse of my field, I'm going to pick them to beat San Francisco.

TODAY'S SELECTIONS: Philadelphia over Baltimore; Washington over Bears; Detroit over Green Bay; Los Angeles over Cards; Cleveland over San Francisco.

(Super-Scout Jack Lavelle files his confidential report in this space every week.)

On The Ball—

Celebrating 100 years of service to the community, the city's pioneer in Branch Banking provides 78 conveniently located offices throughout Greater New York.

Offering complete banking service, we invite you to come in the nearest branch and discuss your banking business with us.

**CORN EXCHANGE BANK
TRUST COMPANY**

Member Federal Deposit Insurance Corporation

THIS WEEKEND'S NFL PAIRINGS

Home Team	Visiting Team
N. Y. GIANTS	PITTSBURGH
Won 2, Lost 5, Tied 0	Won 3, Lost 4, Tied 0
7—Los Angeles (a)	21—Detroit (a)
14—Pittsburgh (a)	24—New York
9—Washington (a)	31—Chicago Cards
21—Chicago Cards	7—Philadelphia (a)
0—Cleveland	31—Green Bay
23—Chicago Cards (a)	7—Philadelphia
7—Philadelphia (a)	16—Cleveland (a)
—Pittsburgh	—New York (a)
—Washington	—Cleveland
—Philadelphia	—Washington
—Cleveland (a)	—Chicago Cards (a)
—Detroit	—Washington (a)
81	122 137 186

Home Team	Visiting Team
PHILADELPHIA	BALTIMORE
Won 4, Lost 2, Tied 1	Won 3, Lost 4, Tied 0
21—San Francisco (a)	13—Chicago Bears
21—Washington	17—Detroit
13—Cleveland (a)	16—Chicago Bears (a)
23—Pittsburgh	14—Green Bay (a)
56—Chicago Cards (a)	27—Washington
35—Pittsburgh (a)	24—Green Bay
30—New York	7—Detroit (a)
—Baltimore	—Philadelphia (a)
—Chicago Cards	—Los Angeles
—New York (a)	—San Francisco
—Washington (a)	—Los Angeles (a)
—Cleveland	—San Francisco (a)
199	127 118 156

Home Team	Visiting Team
WASHINGTON	CHICAGO BEARS
Won 3, Lost 3, Tied 1	Won 1, Lost 5, Tied 1
24—Chicago (a)	9—Baltimore (a)
21—Philadelphia (a)	17—Green Bay (a)
13—New York	14—Baltimore
14—Cleveland	28—San Francisco
17—Baltimore (a)	24—Los Angeles (a)
3—Cleveland (a)	14—San Francisco (a)
28—Chicago Cards	21—Green Bay
—Chicago Bears	—Washington (a)
—New York (a)	—Detroit
—Pittsburgh (a)	—Los Angeles
—Philadelphia	—Detroit (a)
—Pittsburgh	—Chicago Cards
120	144 127 160

Home Team	Visiting Team
GREEN BAY	DETROIT
Won 2, Lost 4, Tied 1	Won 5, Lost 2, Tied 0
0—Cleveland	38—Pittsburgh
13—Chicago Bears	17—Baltimore (a)
20—Los Angeles	24—San Francisco
37—Baltimore	19—Los Angeles
14—Pittsburgh a()	14—San Francisco (a)
35—Baltimore (a)	24—Los Angeles (a)
21—Chicago Bears (a)	17—Baltimore
—Detroit	—Green Bay (a)
—San Francisco	—Chicago Bears (a)
—Detroit (a)	—Green Bay
—San Francisco (a)	—Chicago Bears
—Los Angeles (a)	—New York (a)
140	172 163 144

Home Team	Visiting Team
CHICAGO CARDS	LOS ANGELES
Won 0, Lost 7, Tied 0	Won 5, Lost 2, Tied 0
13—Washington	21—New York
7—Cleveland	30—San Francisco (a)
28—Pittsburgh (a)	38—Green Bay (a)
7—New York (a)	31—Detroit (a)
17—Philadelphia	38—Chicago Bears
20—New York	37—Detroit
17—Washington (a)	27—San Francisco
—Los Angeles	—Chicago Cards (a)
—Philadelphia (a)	—Baltimore (a)
—Cleveland (a)	—Chicago Bears (a)
—Pittsburgh	—Baltimore
—Chicago Bears (a)	—Green Bay
109	210 222 156

Home Team	Visiting Team
CLEVELAND	SAN FRANCISCO
Won 7, Lost 0, Tied 0	Won 5, Lost 2, Tied 0
27—Green Bay (a)	31—Philadelphia
27—Chicago Cards (a)	31—Los Angeles
37—Philadelphia	21—Detroit (a)
30—Washington (a)	35—Chicago Bears (a)
7—New York (a)	10—Detroit
27—Washington	24—Chicago Bears
34—Pittsburgh	31—Los Angeles (a)
—San Francisco	—Cleveland (a)
—Pittsburgh (a)	—Green Bay (a)
—Chicago Cards	—Baltimore (a)
—New York	—Green Bay
—Philadelphia (a)	—Baltimore
189	53 183 158

NATIONAL LEAGUE LEADERS

RUSHING

1. Perry, San Francisco	115 for 599 yds.
2. Justice, Washington	76 for 459 yds.
3. Towler, Los Angeles	100 for 444 yds.

PASSING

1. Graham, Cleveland	96 of 150 for 1,603 yds.
2. Thomason, Philadelphia	82 of 143 for 1,259 yds.
3. Van Brocklin, Los Angeles	91 of 174 for 1,475 yds.

PASS-RECEIVING

1. Nickel, Pittsburgh	40 for 490 yds.
2. Pihos, Philadelphia	39 for 662 yds.
3. Stonesifer, Cardinals	38 for 474 yds.

SCORING

1. Groza, Cleveland	57 pts.
2. Cone, Green Bay	56 pts.
3. Agajanian, Los Angeles	54 pts.
3. Walston, Philadelphia	54 pts.

NATIONAL LEAGUE STANDINGS

EASTERN CONFERENCE

	W.	L.	T.	Pct.	Points For	Points Agst.
Cleveland	7	0	0	1.000	189	53
Philadelphia	4	2	1	.667	199	127
Washington	3	3	1	.500	120	144
Pittsburgh	3	4	0	.429	137	186
NEW YORK	2	5	0	.286	81	122
Chicago Cardinals	0	7	0	.000	109	210

WESTERN CONFERENCE

Detroit	5	2	0	.714	163	144
Los Angeles	5	2	0	.714	222	156
San Francisco	5	2	0	.714	183	158
Baltimore	3	4	0	.429	118	156
Green Bay	2	4	1	.333	140	172
Chicago Bears	1	5	1	.167	127	160

Something to cheer about!

W THREE FEATHERS

GIANT LEADERS

Ground-Gaining	
Grandelius	88 for 219 yds.
Passing	
Conerly	63 of 139 for 623 yds.
Pass Receiving	
Rote	11 for 182 yds.
Scoring	
Gifford	16 pts.
Punting	
Landry	40.8-yd. avg.
Punt Returns	
Tunnell	27 for 171 yds.
Kick-Off Returns	
Gifford	10 for 274 yds.
Interceptions	
Long	3 for 59 yds.

Very Special Reserve

means all that its name implies . . . Chosen from special reserves of the choicest whiskies in the world . . . to bring you a very special reward in drinking pleasure!

Now available in the new and handsome "VSR Oval" bottle.



BLENDING WHISKEY • 86.8 PROOF • 65% GRAIN NEUTRAL SPIRITS • THREE FEATHERS DISTILLING CO., ALADDIN, PA.

SMOKERS BY THE THOUSANDS ***NOW*** CHANGING TO CHESTERFIELD

*the **ONLY** cigarette
ever to give you...*

①

PROOF of LOW NICOTINE HIGHEST QUALITY

The country's six leading cigarette brands were analyzed—chemically—and Chesterfield was found *low in nicotine—highest in quality.*

②

A PROVEN RECORD with smokers

Again and again, over a full year and a half a group of Chesterfield smokers have been given thorough medical examinations...the doctor's reports are a matter of record, "*No adverse effects to the nose, throat and sinuses from smoking Chesterfields.*" A responsible independent research laboratory supervises this continuing program.

*Don't you want to
try a cigarette
with a record like this?*

Rhonda Fleming

CHESTERFIELD BEST FOR YOU

