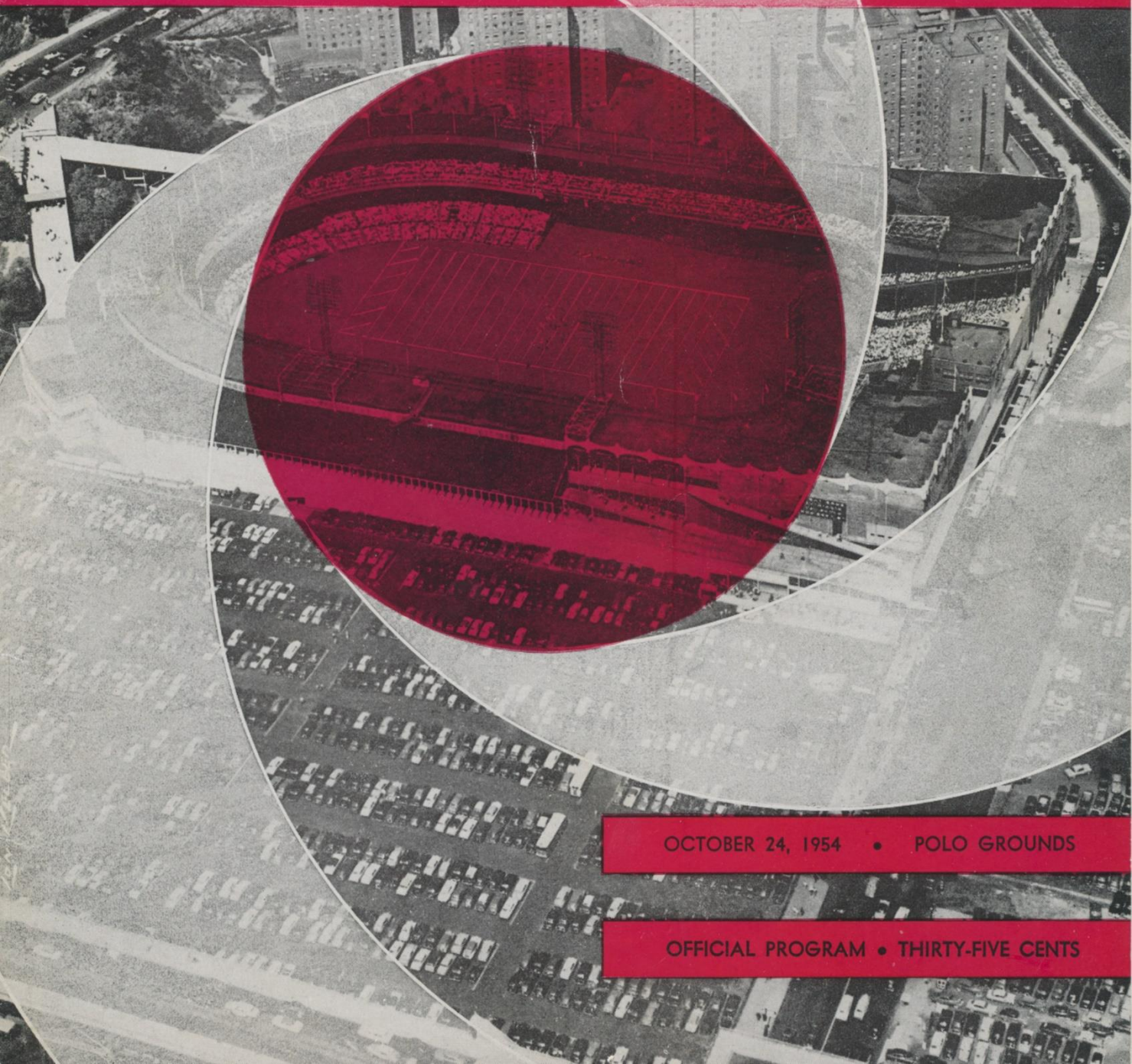


# GIANTS REDSKINS



OCTOBER 24, 1954 • POLO GROUNDS

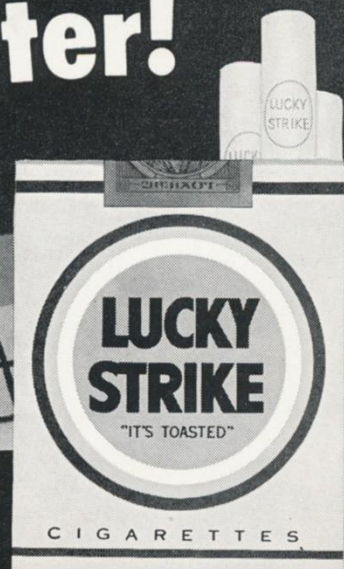
OFFICIAL PROGRAM • THIRTY-FIVE CENTS



What makes  
a Lucky  
taste better?

**"IT'S TOASTED"**  
to taste better!

**LUCKIES TASTE BETTER**  
Cleaner, Fresher, Smoother!



COPR., THE AMERICAN TOBACCO COMPANY



WATER

CLUB SODA

SPARKLING

CANADA DRY WATER

CANADA DRY GINGER ALE

THE TEAM WITH THE HIGHEST SCORE!

for bringing pleasure to all America!

QUININE WATER

CANADA DRY Quinac GIN AND TONIC MIXER

2 QUARTER 5 D LINE 6 YDS. TO GO 7

PLAY

OFFICIAL WATCH FOR NATIONAL FOOTBALL LEAGUE



*Longines*



*The World's Most Honored Watch*

ACCEPTED AS OFFICIAL WATCH  
FOR TIMING  
CHAMPIONSHIP SPORTS EVENTS  
IN ALL FIELDS ALL OVER THE WORLD  
INCLUDING THIS GAME

*Product of  
Longines-Wittnauer Watch Company*







**BACK YOUR  
NEW YORK GIANTS!**

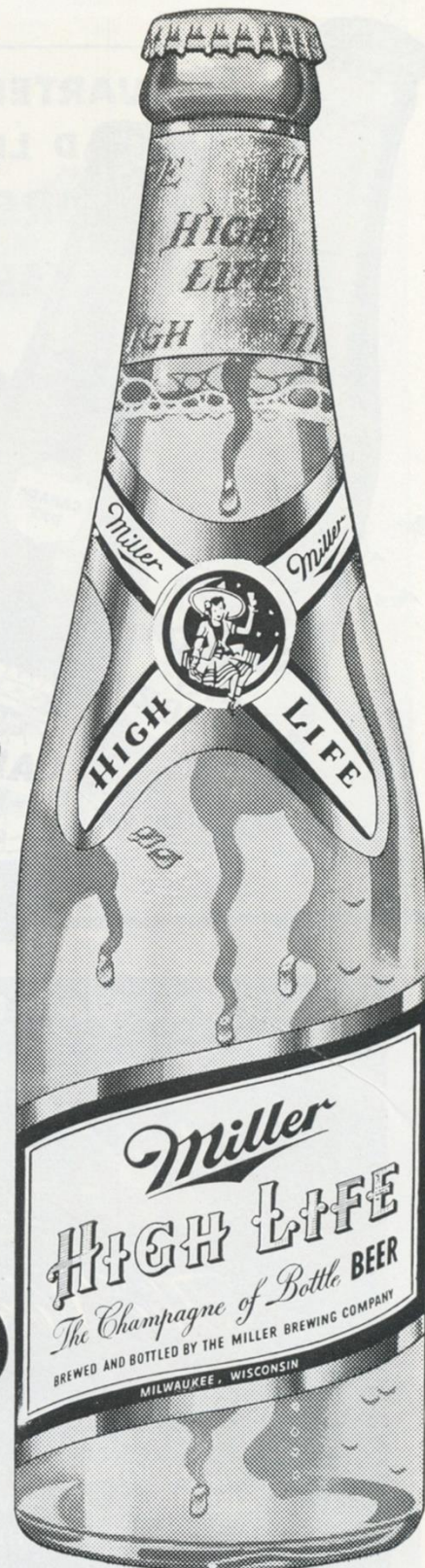
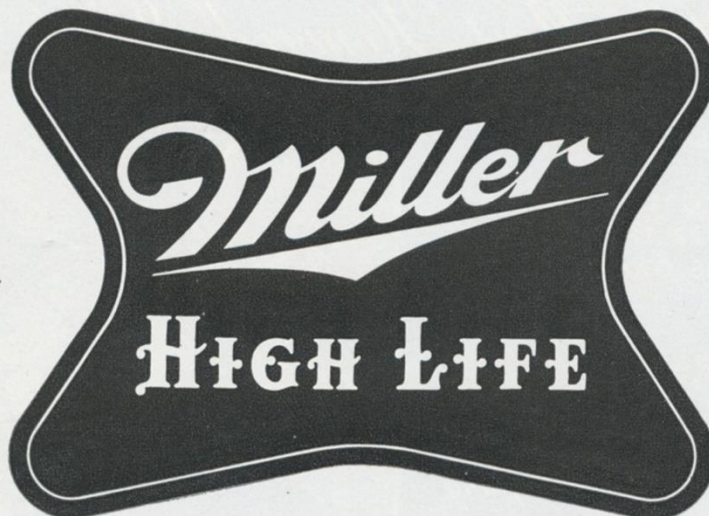
When you can't attend the games in person, follow the Giants on WMGM as Miller High Life, the Champagne of Bottle Beer, brings you the play-by-play reports of all games, home and away.



**Enjoy Life with Miller High Life!**

At the game, at home or at your favorite tavern, hotel, club or restaurant, treat yourself and your friends to an extra measure of pleasure with golden, gleaming Miller High Life.

**THE  
NATIONAL  
CHAMPION  
OF QUALITY**



A genuine Milwaukee beer . . . Miller High Life is brewed and bottled by the Miller Brewing Company ONLY . . . and ONLY in Milwaukee, Wisconsin.





New York Giants ball carrier heads for paydirt as teamwork opens hole for touchdown in hard fought Polo Grounds contest. Notice converging tacklers closing in too late.

*Pick the **WINNER!***

# Prest-o-lite hi-level Battery

*needs water only  
3 times a year*

IN NORMAL CAR USE

**LASTS LONGER, TOO !**

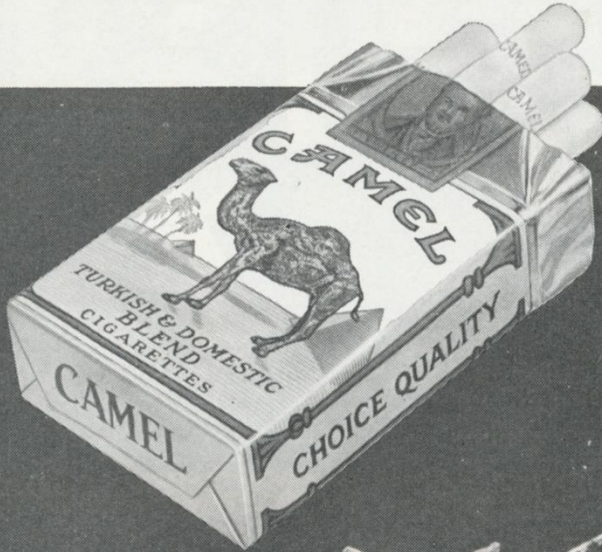


Prest-O-Lite Battery Company, Inc., Toledo 1, Ohio



# CAMEL

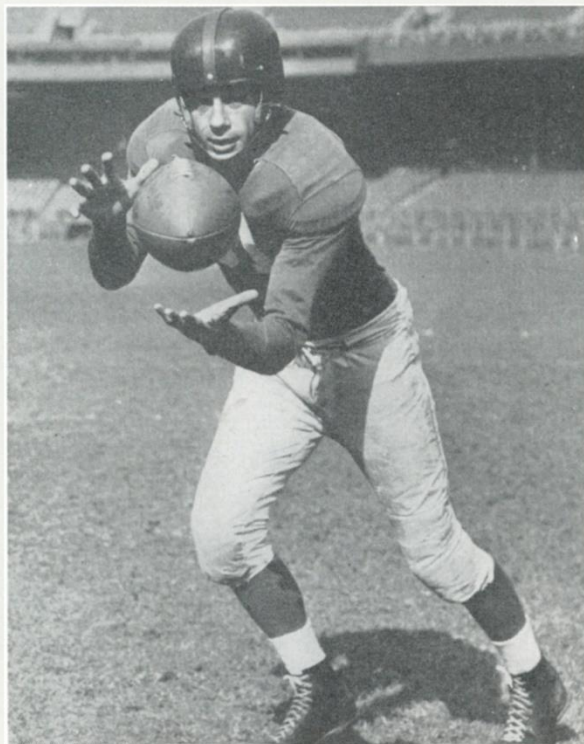
FOR MORE PURE PLEASURE!



*So Mild—  
yet so  
rich-tasting!*



# Touchdowns a Schnelker Specialty



End Coach **BILL SWIACKI** (left) has an adept pupil in **BOB SCHNELKER** (right).

**I**N Bob Schnelker, the Giants have their most effective touchdown pass catcher since Bill Swiacki. And, oddly, Schnelker is under the tutelage of Swiacki, who came out of retirement to coach the Giant ends.

Schnelker nabbed his sixth scoring pass in four games against the Cardinals here last Sunday. It was a plunging catch in the corner of a ball at his shoe tops, as Schnelker headed for the sideline.

Afterwards Swiacki commented, "The catch was difficult enough but I do not see how he avoided going out of bounds. It was a marvelous recovery to check momentum and make the touchdown."

Schnelker is a raw-boned athlete of 6 feet 4 and 215 pounds. He was drafted by the Cleveland Browns in 1950 but reported instead to the Marines at Parris Island. In 1953, when he returned to football, he was cut by the Browns and went to Philadelphia on waivers. He came to the Giants this year in a trade.

As a Giant, Schnelker already has made a fine start towards a place in the records. With six touchdown catches, he is only four removed from the club record of ten set by Frank Liebel in 1945 and equalled by Swiacki in 1948.

If Schnelker stays with the Giants for a number of years, he will have a chance to surpass Liebel's high of twenty touchdown receptions in six seasons or Swiacki's seventeen for three.

Schnelker is big and strong, but not particularly fast. He is the best blocker among the Giant ends. He has caught only twelve passes this season, so half have been for touchdowns.

Bob's deepest disappointment was being cut by the Browns and his most pleasant surprise was coming to the Giants.

"I was the last to be dropped by the Browns in '53," he recalls, "and it was a blow, because I live in Ohio and also have great respect for Paul Brown. He runs a team precisely. Everything has to be exactly so. Then I was backed up behind Pihos and Walston with the Eagles.

"When I came to the Giants I was surprised to find a team run on the same lines as Brown works. Out in Oregon, in the Giant camp, there was no compromise. You had to do the job just right or it wouldn't do."

Schnelker ascribes the success he has had to precision and physique. "I know I am not fast," he says. "But I have good hands and am strong enough and big enough to block the halfbacks off and fight for the ball.

"Most important, though, is the running of the pattern. When you get the timing of the pattern just right, as our coaches insist, you are working with everybody else on the team.

"I think I am a better player than I was last year. It is surprising what can be learned as a rookie. You learn to relax, most of all, and you get a fundamental idea of the habits of the players in the league and how to handle them."

Schnelker, 24 years old, played at Bowling Green (on an unbeaten team in his junior year) and caught 20 touchdowns in three seasons. He lives in Upper Sandusky, Ohio, is married, and expects an heir soon.

1920 — 35th Year, National Football League — 1954

This book is published by **HARRY M. STEVENS, Inc.**, 320 Fifth Avenue, New York 1, N. Y.



OPEN A NEW WORLD OF WHISKEY ENJOYMENT...

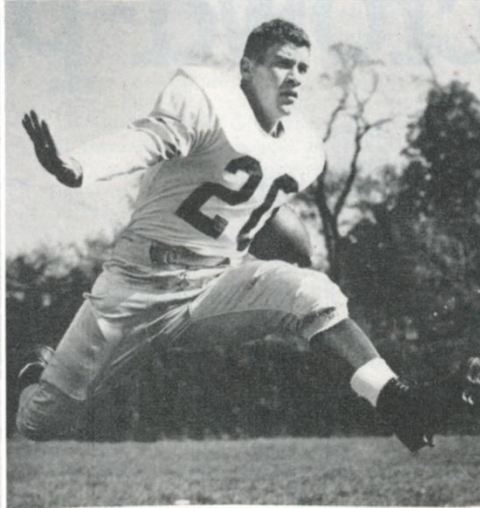
Say Seagram's and be Sure



SEAGRAM-DISTILLERS CORPORATION, NEW YORK CITY. BLENDED WHISKEY. 86.8 PROOF. 65% GRAIN NEUTRAL SPIRITS.



# Giants Boast Backfield Depth



**GIANT "BULLPEN" BACKS:** With Bobby Epps (left), Herb Johnson (above) and Cutter Long (right) on hand to relieve Eddie Price, Frank Gifford and Kyle Rote, the 1954 Giants are able to keep offensive pressure on all the way.

**T**HE New York Giants have the only all All-American backfield in pro football in Charlie Conerly, Kyle Rote, Eddie Price and Frank Gifford. But the Giants also can present a second backfield which seems to have every bit as much speed and vigor.

That would be a group with Bobby Clatterbuck at quarterback, Herb Johnson at left half, Buford Long at right half and Bobby Epps at fullback.

## ATTENTION FANS!

*For the comfort and convenience of those attending Giant home games, it is requested that all ticket-holders take their seats by way of the entrance ramps leading to their own sections.*

*These entrance ramps are clearly marked. Using them will take you to your seat by the most direct route and with a minimum of confusion.*

*Give yourself—and the other fellow—a break and avoid walking in front of other sections while going to your seat.*

**PLEASE COOPERATE!**

Conerly, Rote, Price and Gifford were nationally known as college players and were magazine cover boys. Their fame has continued to grow in National Football League play.

While they achieved less national renown, Clatterbuck, Johnson, Long and Epps were well known in their own bailiwicks as collegians. Clatterbuck at Houston, Johnson at West Point, Long at Florida and Epps at Pittsburgh.

Of the four only Long is a veteran. Called "Cutter" by his teammates, Long already had a reputation when he was the star of the Lake Wales High School team. So sought after was he by Southeastern Conference colleges that he announced as a high school junior that he would attend Florida. That got the other colleges off his neck and he was able to get some studying done.

Long is 6 foot 1 and still growing. His weight is now close to 200 and he has lost none of his early speed. At Florida he was a 24-foot broad jumper and a 9.9 dashman. He is probably the fastest man on the Giant squad.

The New Yorkers drafted him No. 4 in 1953. It was evident from the start that he would be a star. In his first Polo Grounds game

(against the 49ers) he scored two touchdowns on pass receptions, one for 60 yards.

Johnson, who played on the 1949 and '50 West Point teams as a defensive back, has been a sensation with the Giants.

Herb is one of the smallest backs in the league at 5 foot 10, 172. He is not particularly fast, either, but he has terrific drive for his size and a change of pace which is confusing to tacklers. He's 25 years old.

Epps, All-East selection at Pittsburgh, is the fire-plug type fullback, 5 foot 8, 195 pounds. He is built very close to the ground and runs even closer. It takes a clean shot by a tackler to bring him down. His weight and power is in his huge thighs. Coach Howell loves to watch him run the "draw" play, on which Bobby often bulls through the secondary carrying two or three tacklers on his back. His team mates call him "Little Tank," the reference being to the Ram's Tank Younger, who outweighs him by 35 pounds.

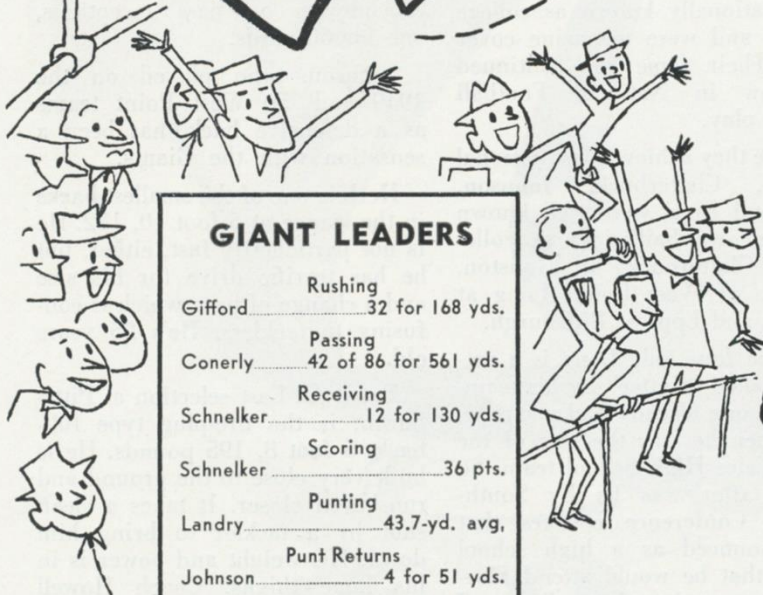
Long, Epps and Clatterbuck, the rookie signal-caller who has been so impressive, are all 22 years old. In the words of Coach Howell, "they only have about a dozen seasons left with the Giants."



# great crowd-pleaser!



What a treat to  
find such a real  
good quality whiskey  
at such a low price!



## GIANT LEADERS

Rushing	
Gifford.....	32 for 168 yds.
Passing	
Conerly.....	42 of 86 for 561 yds.
Receiving	
Schnelker.....	12 for 130 yds.
Scoring	
Schnelker.....	36 pts.
Punting	
Landry.....	43.7-yd. avg.
Punt Returns	
Johnson.....	4 for 51 yds.
Kick-Off Returns	
Johnson.....	6 for 130 yds.
Interceptions	
Nolan.....	4 for 31 yds.



Choice  
of a  
Lifetime



\$4<sup>05</sup> 4/5 QT. \$2<sup>55</sup> PINT

# Golden Wedding

BLENDED WHISKEY • 86 PROOF • 70% GRAIN NEUTRAL SPIRITS • JOSEPH S. FINCH & CO., ALADDIN, PA.



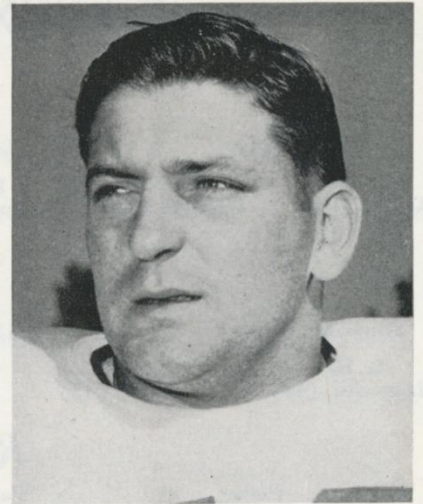
## Meet the Giants



*Char. Conerly*

**Charley Conerly (42)**, now in his seventh season with the Giants, has established himself as one of football's greatest passers and gamest competitors. Going into this campaign, the former All-America from Ole Miss had thrown 83 touchdown passes and held virtually every mark in the passing section of the Giant record book. With competent relief after having carried the load alone for years, Chucking Charley looks sharper than ever.

**Ray Krouse (70)**, No. 2 Giant draft choice in 1951, is co-captain of the club with Kyle Rote and one of its defensive mainstays. The 250-pound Maryland graduate not only has a devastating straight-ahead charge but possesses amazing lateral mobility for a player of his bulk. Ray was shifted to left tackle this season after three years on the right side and is doing his usual bang-up job in the new position.



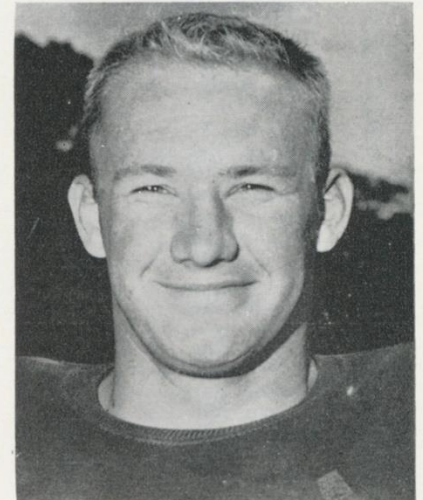
*Ray Krouse*



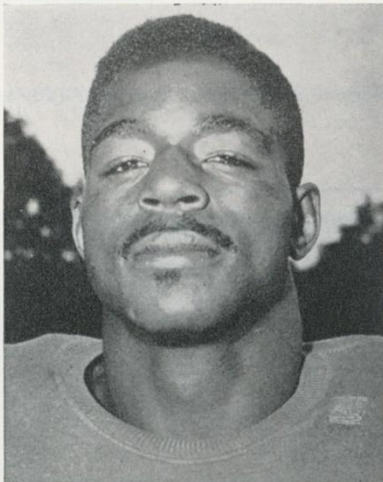
*Em Tunnell*

**Em Tunnell (45)**, a seven-year Giant from Iowa, has been the New Yorkers' not so "secret weapon" ever since his arrival at the Polo Grounds. Year after year, Em has gained more ground as a defensive back than most of his offensive colleagues. A far-ranging and vigilant secondary, he specializes in dazzling punt, kick-off and interception returns. No back in football is more dangerous in the open field. A broken ankle suffered in training handicapped him earlier this season but he's going at full speed now.

**Bill Albright (75)**, who came from Wisconsin to the Polo Grounds in 1951, is a key defenseman. He plays the middle guard spot in the five-man Giant line. A robust 232-pounder, Bill doesn't root out easy. He also gives enemy passers a bad time. Middle guards don't get much chance to catch the eye but Albright did once last season when he scooped up a fumble and raced 16 yards with it for his first pro touchdown.



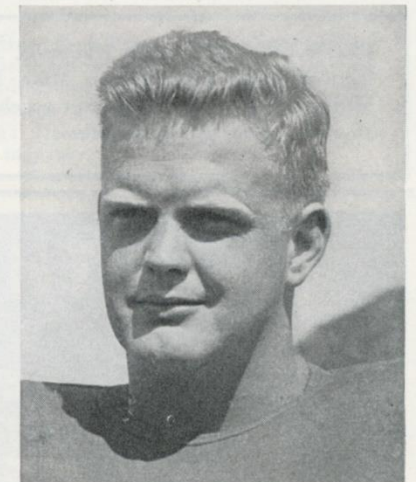
*Bill Albright*



*Roosevelt Brown*

**Roosevelt Brown (79)** is a long-shot draft selection who paid off for the Giants. He was their 27th choice in the 1953 draw and wound up as an offensive regular at left tackle as a rookie last year. Strong, fast and smart, the 245-pound Morgan State graduate seems headed for stardom as a pro. He blocks with crisp authority in the line and downfield.

**Dick Yelvington (72)**, out of Georgia, joined the Giants in 1952 and immediately won his spurs as an offensive tackle. A knee injury slowed him down toward the close of his rookie campaign but an operation restored him to full efficiency last year, during which he added luster to his reputation. Now an old hand, Dick ranks as one of the Giant reliables.



*Dick Yelvington*

AUTOGRAPH COLLECTORS: "Meet the Giants" will be a weekly program feature.  
1920 — 35th Year, National Football League — 1954



# WASHINGTON REDSKINS—LINE-UP

KICK-OFF  
2:05 P.M.

## OFFENSE

<b>R. H.</b> Wells (41)	<b>F. B.</b> Goode (39)	<b>Q. B.</b> Scarbath (18)	<b>L. H.</b> Justice (22)
<b>R. E.</b> Taylor (84)	<b>R. T.</b> Barfield (73)	<b>R. G.</b> Witucki (63)	<b>C.</b> Ulinski (50)
		<b>L. G.</b> Berschet (60)	<b>L. T.</b> Boll (62)
			<b>L. E.</b> Barker (87)

## DEFENSE

<b>L. E.</b> Yowarsky (85)	<b>L. T.</b> Ricca (75)	<b>M. G.</b> Sparks (68)	<b>R. T.</b> Peters (79)	<b>R. E.</b> Ostrowski (88)
<b>L. H.</b> Janowicz (43)	<b>L. L. B.</b> Felton (45)	<b>SAFETY</b> Scudero (28)	<b>SAFETY</b> Rosso (20)	<b>R. L. B.</b> Adduci (44)
				<b>R. H.</b> Alban (42)

## Redskin Roster

No.	Player	Position	Weight	Height	College	Yrs. Pro
12	Gilmer, Harry	HB	173	6:00	Alabama	7
16	Dorow, Al	QB	194	6:00	Michigan State	1
18	Scarbath, Jack	QB	208	6:02	Maryland	2
20	Rosso, George	HB	177	5:11	Ohio State	1
22	Justice, Charley	HB	178	5:10	North Carolina	4
27	Menasco, Don	HB	185	6:00	Texas	5
28	Scudero, Joe	HB	175	5:10	San Francisco	1
36	Drazenovich, Chuck	FB	224	6:01	Georgia	1
39	Goode, Rob	FB	226	6:04	Texas A. and M.	4
41	Wells, Billy	HB	178	5:09	Michigan State	1
42	Alban, Dick	HB	192	6:00	Northwestern	3
43	Janowicz, Vic	HB	184	5:09	Ohio State	1
44	Adduci, Nick	HB	210	5:10	Nebraska	1
45	Felton, Ralph	HB	210	5:11	Maryland	5
46	Atkeson, Dale	FB	210	6:02	No College	1
50	Ulinski, Harry	C	228	6:04	Kentucky	5
51	Schrader, Jim	C	233	6:02	Notre Dame	1
60	Berschet, Marv	G	220	6:02	Illinois	1
62	Boll, Don	T	274	6:02	Nebraska	2
63	Witucki, Slug	G	253	5:11	Indiana	4
68	Sparks, Dave	T	238	6:01	South Carolina	2
69	Hansen, Ron	G	219	6:00	Minnesota	1
70	Modzelewski, Dick	T	259	6:00	Maryland	2
73	Barfield, Ken	G	238	6:02	Mississippi	1
74	Morgan, Bob	T	235	6:00	Maryland	1
75	Ricca, Jim	T	274	6:04	Georgetown	4
79	Peters, Volney	T	230	6:04	Southern California	3
82	Carson, John	E	200	6:03	Penn State	5
84	Taylor, Hugh	E	208	6:04	Oklahoma City College	8
85	Yowarski, Walt	E	235	6:02	Kentucky	3
87	Barker, Ed	E	193	6:03	Washington State	2
88	Ostrowski, Chet	E	225	6:01	Notre Dame	1
89	Tereshinski, Joe	E	222	6:02	Georgia	8

REDSKIN STAFF: Joe Kuharich, Notre Dame, head coach; Herman Ball, Davis-Elkins, Mike Nixon, Pittsburgh, Wayne Millner, Notre Dame, assistant coaches; George Lentz, trainer; Joseph Kuczo, assistant trainer.

### GIANT SPECIAL

Punting—Landry (49), Con  
PAT and FG—Agajanian (8)  
Gifford (16).  
Kick-Offs—Agajanian (8), F  
Gifford (16).

### OFFICIALS

**Referee**  
John Glascott (7), Pe

**Umpire**  
Samuel Wilson (19)

**Head Linesman**  
Charles Berry (31),

**Back Judge**  
Stanley Jaworowski (29)

**Field Judge**  
Michael Lisetski (16),

### REDSKIN SPECIAL

Punting—Justice (22), Janov  
PAT and FG—Felton (45),  
Kick-Offs—Janowicz (43), G

The Official Watch for Timing Today's Game Is Long

SMOOTHER GOING DOWN





# NEW YORK GIANTS—LINE-UP

## OFFENSE

R. H. Rote (44)		F. B. Price (31)		Q. B. Conerly (42)		L. H. Gifford (16)	
R. E. McAfee (80)	R. T. Yelvington (72)	R. G. Stroud (66)	C. Wietecha (55)	L. G. Austin (60)	L. T. Brown (79)	L. E. Schnelker (85)	

## DEFENSE

L. E. Knight (34)		L. T. Krouse (70)		M. G. Albright (75)		R. T. Shipp (74)		R. E. Poole (78)	
L. H. Berry (24)	L. SAFETY Tunnell (45)	L. L. B. Svoboda (30)	R. L. B. Cannady (52)	R. SAFETY Nolan (25)	R. H. Landry (49)				

### NT SPECIALISTS

ry (49), Conerly (42).  
Agajanian (8), Rote (44),  
Agajanian (8), Rote (44),

### OFFICIALS

*Referee*  
Scott (7), Pennsylvania

*Umpire*  
Wilson (19), Lehigh

*Head Linesman*  
Berry (31), Lafayette

*Back Judge*  
Browski (29), Georgetown

*Field Judge*  
Setski (16), Muhlenberg

### KIN SPECIALISTS

ce (22), Janowicz (43).  
Felton (45), Janowicz (43).  
owicz (43), Goode (39).

## Giant Roster

No.	Player	Position	Weight	Height	Age	College	Yrs. Pro
8	Agajanian, Ben	E	215	6:00	35	New Mexico	4
12	Clatterbuck, Bobby	QB	195	6:03	22	Houston	1
16	Gifford, Frank	HB	195	6:01	24	USC	3
20	Johnson, Herb	HB	172	5:10	25	Army	1
22	Long, Buford	HB	195	6:01	22	Florida	2
24	Berry, Wayne	HB	175	6:00	25	Washington State	1
25	Nolan, Dick	HB	185	6:01	22	Maryland	1
27	Rich, Herb	HB	180	5:11	25	Vanderbilt	5
30	Svoboda, Bill	FB	210	6:00	26	Tulane	5
31	Price, Eddie	FB	190	5:11	28	Tulane	5
34	Knight, Pat	FB	200	6:02	25	SMU	2
35	Epps, Bobby	FB	195	5:08	22	Pittsburgh	1
42	Conerly, Charlie	QB	185	6:01	30	Mississippi	7
44	Rote, Kyle	HB	195	6:00	26	SMU	4
45	Tunnell, Em	HB	183	6:01	29	Iowa	7
49	Landry, Tom	HB	195	6:01	29	Texas	6
52	Cannady, John	C	240	6:02	30	Indiana	8
53	Rapacz, John	C	260	6:04	29	Oklahoma	7
55	Wietecha, Ray	C	225	6:01	25	Northwestern	2
60	Austin, Bill	G	225	6:01	25	Oregon State	4
65	Carroccio, Russ	G	235	6:01	23	Virginia	1
67	Kennard, George	G	215	6:00	25	Kansas	3
70	Krouse, Ray	T	260	6:03	27	Maryland	4
71	Collins, Ray	T	230	5:11	26	L. S. U.	2
72	Yelvington, Dick	T	230	6:02	26	Georgia	3
74	Shipp, Billy	T	275	6:05	23	Alabama	1
75	Albright, Bill	G	240	6:01	25	Wisconsin	4
78	Poole, Barney	E	240	6:03	30	Mississippi	5
79	Brown, Roosevelt	T	245	6:03	22	Morgan State	2
80	McAfee, Ken	E	205	6:02	24	Alabama	1
85	Schnelker, Bob	E	215	6:04	24	Bowling Green	2
88	Wilkins, Dick	E	195	6:02	29	Oregon	3
89	Livingston, Cliff	E	205	6:03	23	UCLA	1

GIANT STAFF: Jim Lee Howell, Arkansas, head coach; Vince Lombardi, Fordham, backfield coach; Ed Kolman, Temple, line coach; Bill Swiacki, Columbia, end coach; Tom Landry, Texas, defensive coach; John Johnson and Sid Moret, trainers; Dr. Francis Sweeny, physician; Dr. Arthur G. Croker, dentist; Joseph Pugni, equipment manager.

ame Is Longines—"The World's Most Honored Watch"

BLENDED WHISKEY—86.8 PROOF—65% GRAIN NEUTRAL SPIRITS. CALVERT DISTILLERS CO., N.Y.C.

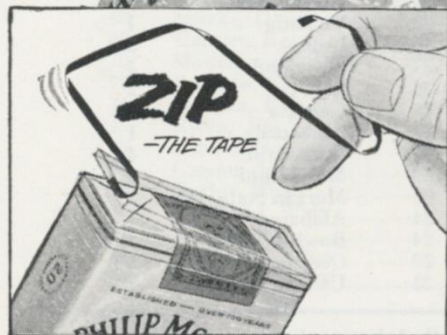
# Calvert

## SATISFIES





New! Only PHILIP MORRIS has it!



*Fastest opening pack in the world!*

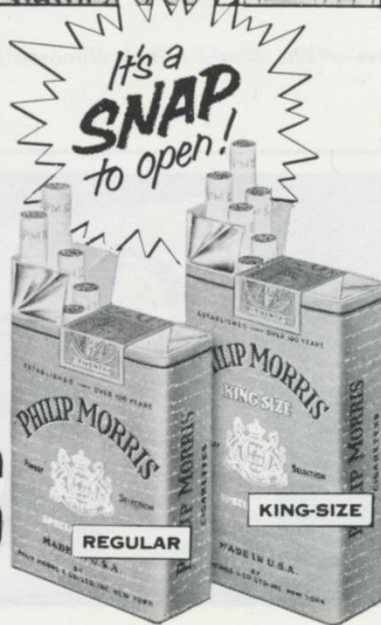
As fast as you can say "Philip Morris" this new, exclusive snap-open pack opens. And just as quickly and easily it closes. No more messy exploded-looking packs. No torn cigarette ends. No annoying tobacco crumbs in pocket or purse. And your PHILIP MORRIS cigarettes stay fresher . . . because the snap-open end folds neatly back into place. For full flavor . . . fine aroma . . . full smoking pleasure . . . get PHILIP MORRIS King Size or Regular. New snap-open pack yours at no extra cost!



CALL  
FOR

**PHILIP MORRIS**

*America's Finest Cigarette . . . In The Exclusive "Snap-Open" Pack*





# Looking Over the Redskins



**JACK SCARBATH**

Some of football's most illustrious names are on the Redskin roster. Washington's backfield corps includes **Charley (Choo-Choo) Justice (22)**, **Jack Scarbath (18)**, **Harry Gilmer (12)** and **Vic Janowicz (43)** of All-America fame.

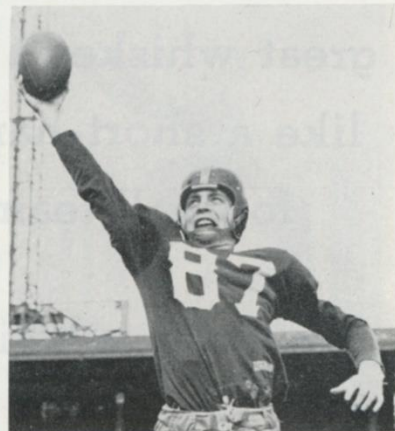
The Skins also have some imposing new backfield talent. In their rookie group, in addition to Janowicz, are **Al Dorow (16)**



**ROB GOODE**

and **Billy Wells (41)** of Michigan State and **Ralph Felton (45)** of Maryland. The return of **Rob Goode (39)** from service supplies them with a big added wallop at fullback.

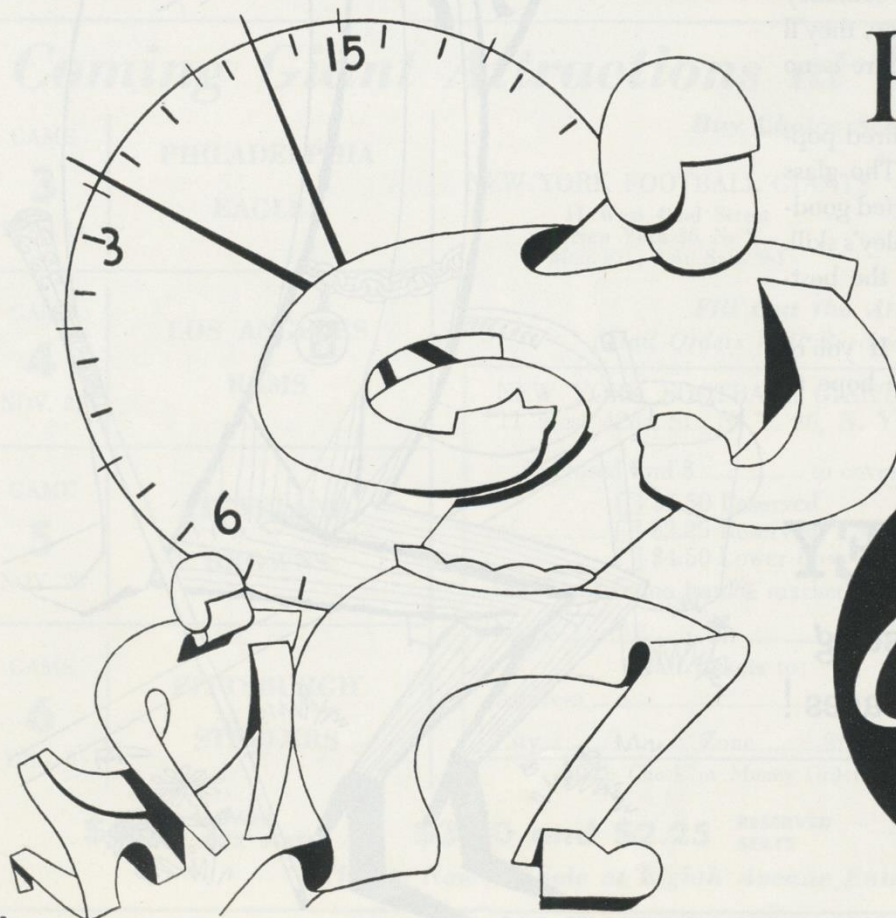
Washington has two crack pass-receiving ends in **Hugh Taylor**



**ED BARKER**

**(84)** and **Ed Barker (87)**. Taylor has been a long-time nemesis of the Giants and Barker gave them a lot of trouble by grabbing two touchdown passes from Scarbath in Washington.

Up front, the Redskins present **Dick Modzelewski (70)**, ex-Maryland; **Joe Ostrowski (88)**, ex-Notre Dame, **Jim Ricca (75)**, of Brooklyn and Georgetown, and other stalwarts.



## Pause... Refresh





A great whiskey's  
like a short-handed  
football team

...it has no substitute!

Winning teams. Crisp Fall days. Whiskey. It doesn't matter much what you're talking about. That word "great" is one you don't toss around reckless-like. You save it for something real special.

And to a heap of people, our Schenley is special whiskey. *Great* whiskey, they'll tell you. Some claim, in fact, there is no substitute for Schenley.

The reason Schenley's so all-fired popular is here in this hourglass. The glass itself represents Nature's unhurried goodness. The big 'S' stands for Schenley's skill. Together, they make Schenley the best-tasting whiskey in ages!

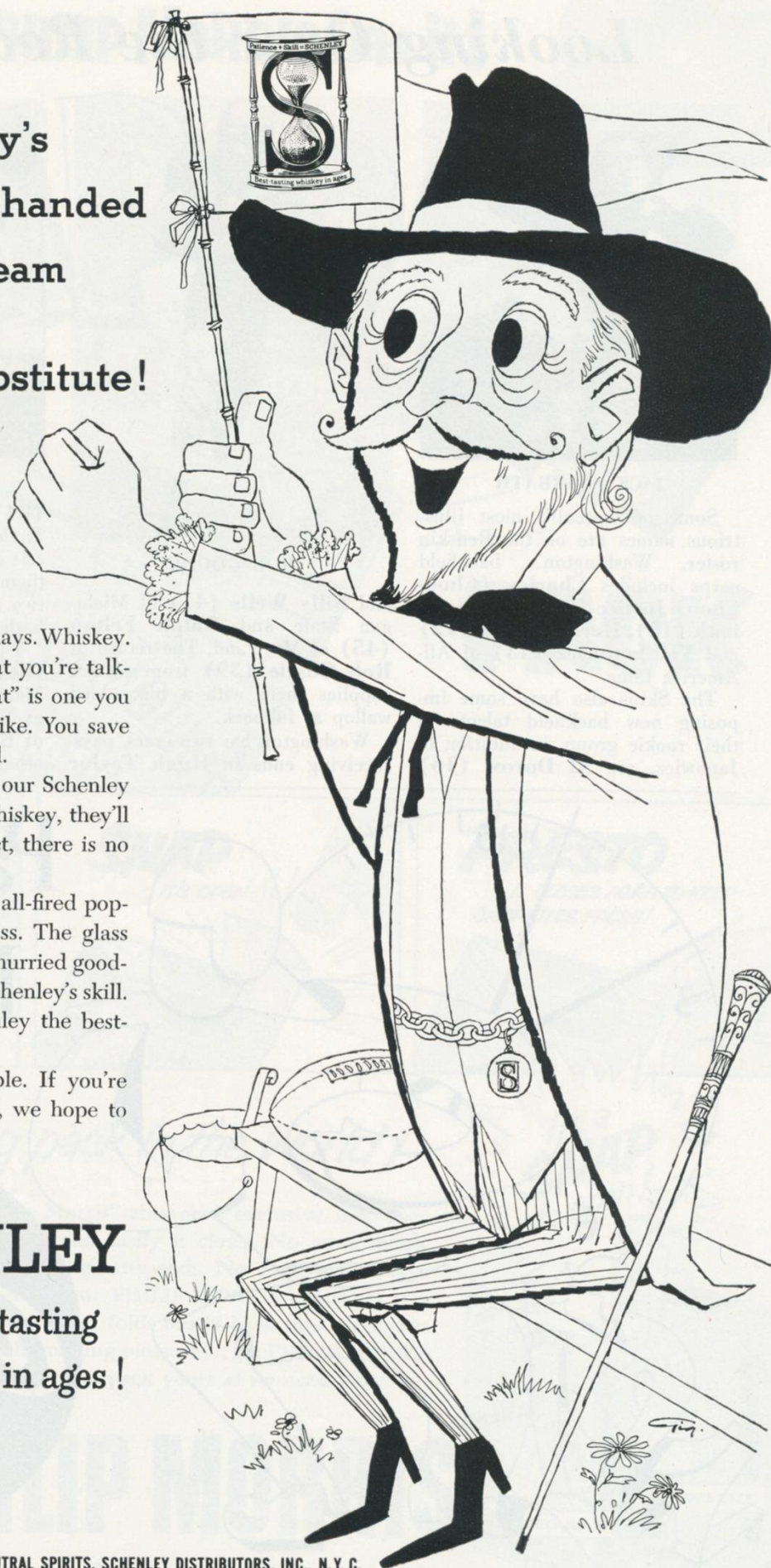
That's it, plain and simple. If you're not a Schenley fan already, we hope to have the pleasure soon.



# SCHENLEY

the best-tasting  
whiskey in ages!

BLENDED WHISKEY, 86 PROOF. 65% GRAIN NEUTRAL SPIRITS. SCHENLEY DISTRIBUTORS, INC., N.Y.C.





# EAGLES HERE ON NOV. 14



**BOBBY WALSTON**

The Philadelphia Eagles will be here three weeks from today, which promises a highly exciting afternoon of football at the Polo Grounds. Away to a flying start, the Eagles have established themselves as the "team to beat" in the NFL's Eastern Conference.

The all-star Philadelphia cast is headed by a brilliant aerial combination. In Bobby Thomason, the Eagles have one of football's finest

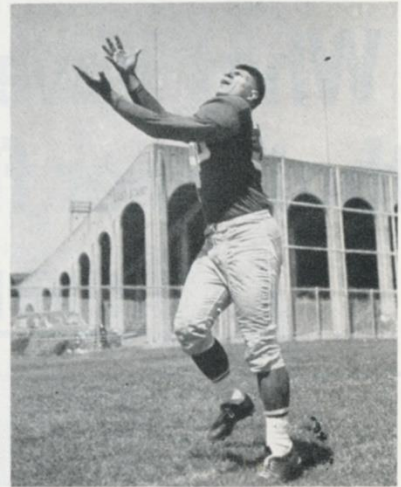


**BOBBY THOMASON**

passers and, in Pete Pihos and Bobby Walston, they have two of the swiftest and most elusive receivers. Jerry Williams, a scampering halfback, is another favorite target of Thomason and Adrian Burk, relief quarterback.

Rugged Jim Parmer, swift Don Johnson and Williams are the spearheads of Philadelphia's fast-striking running attack, which has been strengthened by the addition to the squad of Neil Worden, Notre Dame's brilliant fullback of the past four seasons.

A rock-ribbed Philadelphia de-



**PETE PIHOS**

fense is built around such familiars as Chuck Bednarik, Frank Kilroy, Mike Jarmoluk and Norm Willey, who is just about the most devastating end in the business.

The Giants surprised the Eagles, 37-28, at the Polo Grounds last year after bowing to them, 30-7, at Philadelphia. Their Nov. 14 meeting shapes up as one of the highlights of the Polo Grounds campaign.

## Coming Giant Attractions at Polo Grounds

GAME

**3**

NOV. 14

**PHILADELPHIA**

**EAGLES**

GAME

**4**

NOV. 21

**LOS ANGELES**

**RAMS**

GAME

**5**

NOV. 28

**CLEVELAND**

**BROWNS**

GAME

**6**

DEC. 5

**PITTSBURGH**

**STEELERS**

*Buy Choice Seats in Advance*

*at*

**NEW YORK FOOTBALL GIANTS NEW YORK BASEBALL GIANTS**

11 West 42nd Street  
New York 36, N. Y.  
Mon.-Fri., 9-5; Sat., 9-1

100 West 42nd Street  
New York 36, N. Y.  
Mon.-Fri., 9-5; Sat., 9-12

*or*

*Fill Out the Attached Blank*

*(Mail Orders Will Receive Special Consideration)*

**NEW YORK FOOTBALL GIANTS**  
11 West 42nd St., N. Y. 36, N. Y.

No.  
of  
Ticks.

**1954 GIANT GAMES  
AT POLO GROUNDS**

Enclosed find \$..... to cover cost

of ☐ \$3.50 Reserved  
☐ \$2.25 Reserved Seats for  
☐ \$4.50 Lower Box

the Giant home games marked here →

Name.....

Mail tickets to:

Address.....

City.....Zone.....State.....

**NOV. 14  
PHILADELPHIA**

**NOV. 21  
LOS ANGELES**

**NOV. 28  
CLEVELAND**

**DEC. 5  
PITTSBURGH**

Make Check or Money Order Payable to N. Y. Football Giants

**\$4.50 LOWER  
BOX SEATS**

**\$3.50 and \$2.25 RESERVED  
SEATS**

**\$1.25 BLEACHER  
SEATS**

*Tickets Now on Sale at Eighth Avenue Entrance*



**What have Viceroy's got  
that other filter cigarettes  
haven't got?**



**THE ANSWER IS**

**20,000 Filters**  
**in every Viceroy Tip**



*New King-Size Filter Tip*

**VICEROY**  
WORLD'S LARGEST-SELLING  
FILTER TIP CIGARETTE



ONLY A PENNY  
OR TWO MORE  
THAN CIGARETTES  
WITHOUT FILTERS

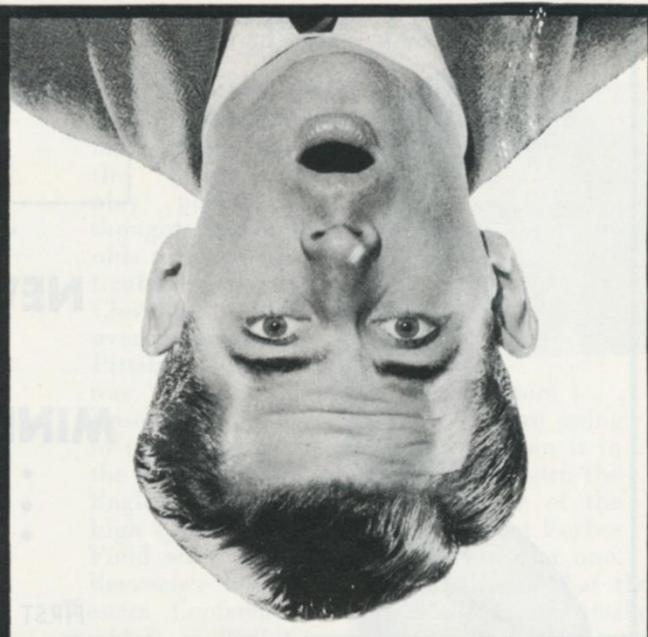


# Giant Jottings

THE Giants didn't set any records last Sunday against the Cardinals (unlike two weeks ago, when four were equaled against the Redskins) but when was the last time three different passers threw touchdown passes in the same game? ... Charley Conerly, who pitched four against the Redskins, was outdone last week by Frank Gifford, two to one ... But it was Kyle Rote who opened the scoring with a 19-yard toss to Ken MacAfee ... MacAfee made a terrific tumbling catch in the end zone ... A few minutes later Gifford passed to Bob Schnelker for the second touchdown ... MacAfee had to leap for Rote's pass, but Schnelker had to dive for Gifford's near the corner in left center field ... Schnelker then made a miraculous recovery to avoid the sideline and scoot into the end zone ... Next came Conerly's pass to MacAfee, who ran a beautiful pattern and was in the clear behind the goal posts ... Giant fans held their breaths as Conerly's pass had to clear two defenders and the goalposts ... The fourth scoring pass, by Gifford again was the longest, the ball traveling some 45 yards in the air diagonally across field to Eddie Price waiting in the end zone ... All Giant scoring was done at the same end of the field, even Ben Agajanian's sixth field goal (he's attempted seven) ... Conerly was voted the best Giant offensive player and Ray Collins, 230 pound tackle, the best on defense ... Both received Schick Electric Shavers ... At the conclusion of four weeks of NFL competition, the Giants still were in the lead offensively with 137 points and were second to Detroit in the number of points scored by the opposition ... And the Lions have played one less game.

Suburban followers of the Giants can purchase tickets in advance at the Davega stores in Jamaica, White Plains, Hackensack and Newark. ... Attention New Jersey fans! Public Service busses will make excursion trips to the Polo Grounds from Newark and Paterson each Sunday the Giants play at home.

Ben Agajanian is the NFL leader in field goals, with six hits in seven shots, and ranks third among the NFL scorers with 34 points. ... However, Booting Ben stands second to Bob Schnelker among the Giant point-makers. ... The pass-grabbing Giant end, with 36 points, is topped in the league only by Philadelphia's Bobby Walston, who has matched the Agajanian-Schnelker total of 70 points by combining their two talents. ... There are two local products on the 1954 Giant roster in Dick Nolan of White Plains and Russ Carroccio of Passaic. ... Carroccio, who replaced Jack Stroud, now on the injured list, is a protege of Augie Lio, former NFL guard and place-kicking great. ... Russ, a Virginia graduate, is a place-kicker of ability himself although, with Agajanian on the scene, he is not likely to get much chance to show his skill. ... Nolan, who played at Maryland, is developing fast as a defensive back under the tutelage of player-coach Tom Landry and Em Tunnell.



## THE GEM 'V'-EDGE may upset all your ideas about shaving!

The reason is simple. GEM has 4 times more steel than wafer-thin, double-edge blades. It's a well known fact that you can put a sharper edge on a heavier piece of steel. And in a razor blade, it's sharpness that counts. That's why GEM'S extra steel can be honed to its famous 'V'-Edge—the sharpest edge angle of all!

### Here's why GEM'S 'V'-EDGE gives you better shaves



The GEM Blade with 4-times more steel comes to a longer, sharper 'V'-Edge—the sharpest edge angle of all. It gives you more, easier and longer lasting shaves.

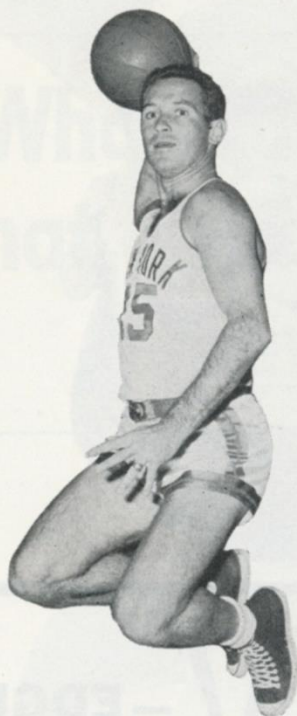
You get 10 GEM 'V'-Edge blades in a dispenser with a used blade vault PLUS a GEM Razor in a handy, lightweight traveling case ... all for only 98¢!



AVOID '5 O'CLOCK SHADOW'!

WITH GEM





DICK McGUIRE

## MADISON SQUARE GARDEN League Opener

This Saturday Evening  
**NEW YORK KNICKS**  
VS.  
The Champion  
**MINNEAPOLIS LAKERS**

- Pollard
- Sunderlage
- Martin
- Mikkelsen
- Skoog
- Holstein
- Lovellette

FIRST GAME OF DOUBLEHEADER, 7:30

Tickets on sale at Madison Square Garden box office. Mail orders promptly filled. Write Basketball Dept., Madison Square Garden, 307 W. 49th St., New York 19, N. Y. Add 25c per order for handling and mailing.

Special student discounts for Knicks' Garden games. Write for our club ticket plan.

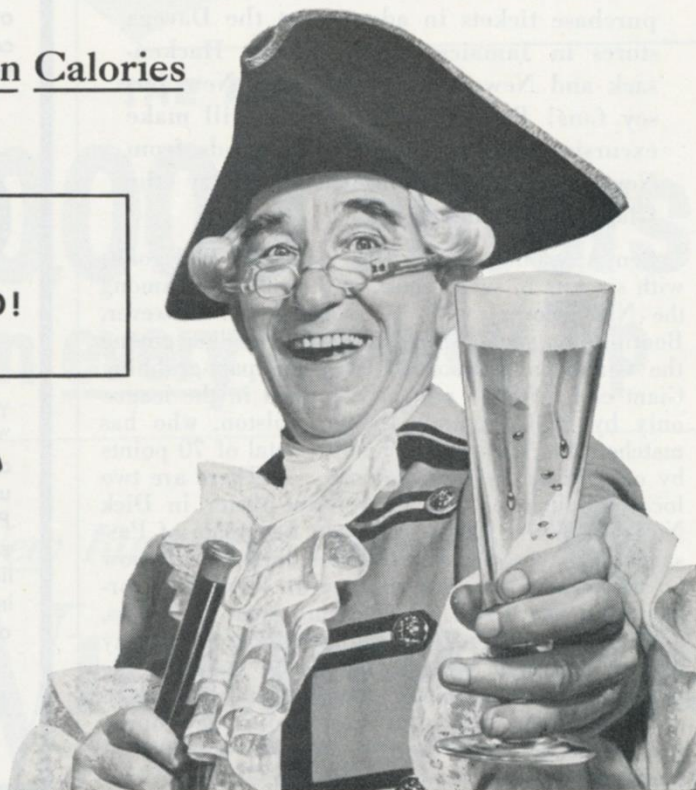
PRICES—\$4, \$3.50, \$3, \$2.50, \$2 and \$1

# *Less filling...more delicious, too!*

Never before...a Beer so low in Calories  
*that tastes so good!*

EXTRA LIGHT—FROSTY-DRY,  
FINEST BEER YOU EVER TASTED!

NEW YORK'S  
FAMOUS  
**Knickerbocker  
Beer**





# SCOUTING AROUND . . . . . With Jack Lavelle

**I**F this comes out more garbled than usual, it's because my emanuensis (that's a good word) had trouble understanding my sign language over the phone. . . . Somewhere between Forbes Field and LaGuardia Airport last Sunday night, I lost my voice. . . . In my work, I'd rather lose a leg. . . . But it's an ill wind etc. . . . My wife is the happiest gal in West Hempstead. . . . Says she can get a word in edgewise for the first time since she's known me. . . . And boy, is she transmitting!

Thinking it over, maybe it was the sight of the Steelers racking up the Browns that left me speechless. . . . What Pittsburgh did to Paul Brown shouldn't even happen to G. Preston Marshall today. . . . Just to give you an idea of how completely the Steelers took charge, they even blocked a field-goal attempt by Lou Groza. . . . I wonder when that last happened?

Dale Dodrill, as tough a middle guard as you will see around the circuit, pulled that stunt. . . . Bill Walsh, Pittsburgh's center, played the best game of his life. . . . Lynn Chandnois was sensational, Ray Mathews was terrific, Jim Finks was tremendous and, if I could think of enough more adjectives, I'd run all the way down through the Steeler roster. . . . I would like to say a special word about Johnny Lattner, though. He's football's Eddie Stanky: can't run, pass or kick, just knows how to beat you.

*(Super-Scout Jack Lavelle files his confidential report in this space every week.)*

Strange thing about the Pittsburgh-Cleveland game was that the Browns didn't play poorly. . . . I thought Renfro, Reynolds and Colo, in particular, were great. . . . Cleveland just got overwhelmed by a Pittsburgh team that was "up" sky high for the occasion. . . . From here on in, those Steelers are going to take a lot of beating—and I mean it in the singular sense. . . . Their game with the Eagles (last night) should be one of the high spots of the season. . . . I'll bet Forbes Field will really be jumping for that one.

Remember how I told you last week that the Western Conference "weak sisters" would make trouble? . . . Well, Green Bay made me look pretty good, I thought, by whomping Los Angeles and that was quite a scare the Bears threw into the Forty-Niners. . . . There'll be more of same. . . . And mark my words, the Redskins and Cardinals will be heard from in the East, too.

**THIS WEEKEND'S PREDICTIONS** (in a weak voice): Pittsburgh over Philadelphia, Cleveland over Cardinals, Detroit over San Francisco, Los Angeles over Bears, Green Bay over Baltimore.



*To Serve You Better*

98 Convenient Offices Throughout

Greater New York

**CHEMICAL  
CORN EXCHANGE  
BANK**

Founded 1824

Member Federal Deposit Insurance Corporation



# This Weekend's NFL Pairings

Home Team		Visiting Team	
N. Y. GIANTS		vs.	WASHINGTON
Won 3, Lost 1, Tied 0			Won 0, Lost 4, Tied 0
41—Chicago Cards (a) .....	10	7—San Francisco (a) .....	41
14—Baltimore (a) .....	20	7—Pittsburgh (a) .....	37
51—Washington (a) .....	21	21—New York .....	51
31—Chicago Cards .....	17	21—Philadelphia .....	49
—Washington .....		—New York (a) .....	
—Cleveland (a) .....		—Baltimore .....	
—Pittsburgh (a) .....		—Cleveland (a) .....	
—Philadelphia .....		—Pittsburgh .....	
—Los Angeles .....		—Chicago Cards (a) .....	
—Cleveland .....		—Philadelphia (a) .....	
—Pittsburgh .....		—Cleveland .....	
—Philadelphia (a) .....		—Chicago Cards .....	
137	68	56	178

PITTSBURGH		vs.	PHILADELPHIA	
<i>Won 3, Lost 1, Tied 0</i>			<i>Won 4, Lost 0, Tied 0</i>	
21—Green Bay (a) .....	20		28—Cleveland .....	10
37—Washington .....	7		35—Chicago Cards (a) .....	16
22—Philadelphia (a) ...	24		24—Pittsburgh .....	22
55—Cleveland .....	27		49—Washington (a) ....	21
.....Philadelphia .....			.....Pittsburgh (a) .....	
.....Chicago Cards (a) .....			.....Green Bay .....	
.....New York .....			.....Chicago Cards .....	
.....Washington (a) .....			.....New York (a) .....	
.....San Francisco .....			.....Cleveland (a) .....	
.....Chicago Cards .....			.....Washington .....	
.....New York (a) .....			.....Detroit (a) .....	
.....Cleveland (a) .....			.....New York .....	
135	78	136	69	

CHICAGO CARDS		vs.	CLEVELAND	
Won 0, Lost 4, Tied 0			Won 1, Lost 2, Tied 0	
10—New York .....	41		10—Philadelphia (a) ...	28
16—Philadelphia .....	35		31—Chicago Cards .....	7
7—Cleveland (a) .....	31		27—Pittsburgh (a) .....	55
17—New York (a) .....	31		.....Chicago Cards (a) .....	
.....Cleveland .....			.....New York .....	
.....Pittsburgh .....			.....Washington .....	
.....Philadelphia (a) .....			.....Chicago Bears (a) .....	
.....Los Angeles (a) ...			.....Philadelphia .....	
.....Washington .....			.....New York (a) .....	
.....Pittsburgh (a) .....			.....Washington (a) .....	
.....Chicago Bears .....			.....Pittsburgh .....	
.....Washington (a) ...			.....Detroit .....	
<hr/>			<hr/>	
50	138	68		90

Home Team		Visiting Team	
SAN FRANCISCO		vs.	DETROIT
<i>Won 3, Lost 0, Tied 1</i>			<i>Won 3, Lost 0, Tied 0</i>
41—Washington .....	7	48—Chicago Bears .....	23
24—Los Angeles (a) ..	24	21—Los Angeles .....	3
23—Green Bay (a) .....	17	35—Baltimore .....	0
31—Chicago Bears (a) ..	24	—San Francisco (a) ..	.....
—Detroit .....	.....	—Los Angeles (a) ..	.....
—Chicago Bears .....	.....	—Baltimore (a) .....	.....
—Los Angeles .....	.....	—San Francisco .....	.....
—Detroit (a) .....	.....	—Green Bay (a) .....	.....
—Pittsburgh (a) .....	.....	—Green Bay .....	.....
—Baltimore (a) .....	.....	—Philadelphia .....	.....
—Green Bay .....	.....	—Chicago Bears (a) ..	.....
—Baltimore .....	.....	—Cleveland (a) .....	.....
119	72	104	26

LOS ANGELES		vs.	CHICAGO BEARS	
Won 1, Lost 2, Tied 1			Won 2, Lost 2, Tied 0	
48—Baltimore (a) .....	0		23—Detroit (a) .....	48
24—San Francisco .....	24		10—Green Bay (a) .....	3
3—Detroit (a) .....	21		28—Baltimore .....	9
17—Green Bay (a) .....	35		24—San Francisco .....	31
—Chicago Bears .....			—Los Angeles (a) ..	
—Detroit .....			—San Francisco (a) ..	
—San Francisco (a) ..			—Green Bay .....	
—Chicago Cards .....			—Cleveland .....	
—New York (a) .....			—Baltimore (a) .....	
—Chicago Bears (a) ..			—Los Angeles .....	
—Baltimore .....			—Chicago Cards (a) ..	
—Green Bay .....			—Detroit .....	
92	80	85		91

BALTIMORE		vs.	GREEN BAY	
<i>Won 1, Lost 3, Tied 0</i>			<i>Won 1, Lost 3, Tied 0</i>	
0—Los Angeles .....	48	20—Pittsburgh .....	21	
20—New York .....	14	3—Chicago Bears .....	10	
9—Chicago Bears (a) .....	28	17—San Francisco .....	23	
0—Detroit (a) .....	35	35—Los Angeles .....	17	
—Green Bay .....		—Baltimore (a) .....		
—Washington (a) .....		—Philadelphia (a) .....		
—Detroit .....		—Chicago Bears (a) .....		
—Green Bay (a) .....		—Baltimore .....		
—Chicago Bears .....		—Detroit .....		
—San Francisco .....		—Detroit (a) .....		
—Los Angeles (a) .....		—San Francisco (a) .....		
—San Francisco (a) .....		—Los Angeles (a) .....		
29	125	75		71

## NATIONAL LEAGUE LEADERS

### RUSHING

1. Perry, San Francisco .....	50 for 356 yds.
2. McElhenny, San Francisco .....	45 for 331 yds.
3. Reid, Green Bay .....	37 for 234 yds.

### PASSING

1. Van Brocklin, Los Angeles .....	53 of 100 for 1081 yds.
2. Graham, Cleveland .....	45 of 69 for 694 yds.
3. Dublinski, Detroit .....	29 of 48 for 474 yds.

### PASS-RECEIVING

1. Wilson, San Francisco .....	22 for 289 yds.
2. Pihos, Philadelphia .....	21 for 317 yds.
3. Boyd, Los Angeles .....	20 for 555 yds.

### SCORING

1. Walston, Philadelphia .....	70 pts.
2. SCHNELKER, NEW YORK .....	36 pts.
3. AGAJANIAN, NEW YORK .....	34 pts.

## NATIONAL LEAGUE STANDINGS

### EASTERN CONFERENCE

	W.	L.	T.	Pct.	For	Agst.
Philadelphia .....	4	0	0	1.000	136	69
NEW YORK .....	3	1	0	.750	137	68
Pittsburgh .....	3	1	0	.750	135	68
Cleveland .....	1	2	0	.333	68	90
Chicago Cards .....	0	4	0	.000	50	138
Washington .....	0	4	0	.000	56	178

### WESTERN CONFERENCE

Detroit .....	3	0	0	1.000	104	26
San Francisco .....	3	0	1	1.000	119	72
Chicago Bears .....	2	2	0	.500	85	91
Los Angeles .....	1	2	1	.333	92	80
Baltimore .....	1	3	0	.250	29	125
Green Bay .....	1	3	0	.250	75	71

1920 — 35th Year, National Football League — 1954



# Highlight on any program...

## NATIONAL LEAGUE LEADERS

Rushing	Perry, San Francisco	50 for 356 yds.
Passing	Van Brocklin, Los Angeles	53 for 1081 yds.
Receiving	Wilson, San Francisco	22 for 289 yds.
Scoring	Walston, Philadelphia	70 pts.
Punting	Van Brocklin, Los Angeles	47.2-yd. avg.
Punt Returns	Christiansen, Detroit	6 for 102 yds.
Kick-Off Returns	Bowman, Detroit	3 for 135 yds.
Interceptions	Stits, Detroit	5 for 73 yds.



The whiskey that  
didn't watch the clock  
...seven long years!



STRAIGHT BOURBON WHISKEY  
86 PROOF • OLD CHARTER DISTILLERY CO.  
LOUISVILLE, KENTUCKY



# OLD CHARTER

KENTUCKY'S FINEST WHISKEY



# THIS IS IT ! **L&M NOW KING SIZE** **OR REGULAR**

*Much  
More Flavor  
Much Less  
Nicotine!*



**BOTH**  
*Same Low  
Price!*

**It's the FILTER that Counts — and L&M has the Best!**

L&Ms have already won the quickest, most enthusiastic nation-wide acceptance a cigarette ever had. Now, L&M comes to you in king-size, too . . . the same great cigarette — *at the same low price* as regular.

In either size — only L&M Filters give you the Miracle Tip — the

effective filtration you need. You get much more flavor — much less nicotine — a light and mild smoke. Remember, it's the filter that counts . . . and L&M has the best!

Today, buy L&Ms king-size or regular. **THEY'RE JUST WHAT THE DOCTOR ORDERED!**

**MIRACLE TIP**



**L&M — AMERICA'S HIGHEST QUALITY FILTER CIGARETTE**