

EAGLES GIANTS

Larry Tisdale
SEPTEMBER 24, 1955
CONNIE MACK STADIUM



OFFICIAL
PROGRAM

50¢

WCAU

RADIO



20th consecutive year.

Now exclusively broadcasting
University of Pennsylvania games
Byrum Saam with Bill Campbell
SPONSORED BY MORRELL-FELIN CO.

5th consecutive year.

Exclusive Broadcasts All Eagles Games
Byrum Saam with Claude Haring
SPONSORED BY ATLANTIC REFINING CO.
and
NATIONAL BOHEMIAN BEER



THE PHILADELPHIA EAGLES, Inc.

FOOTBALL CLUB

FRANK L. McNAMEE
President

JAMES P. CLARK
Vice President

JOSEPH A. DONOGHUE
Secretary

HARRY S. SYLK
Treasurer

VINCENT A. McNALLY
General Manager

JAMES W. TRIMBLE
Head Coach

EDWARD S. HOGAN
Publicity Director

S. E. CORNER 15th AND LOCUST STREETS • PHILADELPHIA 2, PA. • PENNYPACKER 5-4014

AUTHORIZED EAGLES TICKET AGENCIES

PHILADELPHIA: Gimbel Brothers, 8th and Chestnut Sts.; Denery Sporting Goods, 2765 Kensington Ave.; Denery Sporting Goods, 7949 Oxford Ave.; Bond Clothes, 63 W. Cheltenham Ave.; Connie Mack Stadium, 21st & Lehigh Ave.; Sam Framo, 2246 W. Allegheny Ave.; Dave Shusterman, 6384 Castor Ave.; Central City Ticket Office, 1422 Chestnut St.; Cottman Sporting Goods, 1807 Cottman Ave.

ALLENTOWN, PA.: Witwer-Jones Co., 923 Hamilton St.
ATLANTIC CITY, N. J.: Carroll Print Shop, 2646 Atlantic Ave.

BETHLEHEM, PA.: United Army-Navy Store, 124 E. Third St.; Romeo's Ticket Agency, Sun Inn Hotel.

BRIDGETON, N. J.: Dorr Furniture Co., 46 N. Laurel St.

BRISTOL, PA.: Field's Sporting Goods Store, c/o John Field, Jr., 515 Wood St.; Singer Brothers.

BRYN MAWR, PA.: Maddens Service Station.

CHESTER, PA.: Smed's Sport Center, 824 Edgmont Ave.

COATESVILLE, PA.: Sante Drug Store, 8th and Main St.

CONSHOHOCKEN, PA.: Anthony's Men's Shop, c/o Frank M. Zinni, 125 Fayette St.

FAIRLESS HILLS, PA.: Singer Brothers, c/o Herman Silber.

HARRISBURG, PA.: Shenk and Tittle, 313 Market St.

HATBORO, PA.: Bailey & Associates, 219 N. York Road.

LANCASTER, PA.: Shenk Brothers, 30 W. King St.

MILLVILLE, N. J.: Dorr Furniture Co., 113 N. High St.

NORRISTOWN, PA.: Frank Jones, 228 W. Main St.

PENNSGROVE, N. J.: Charles Charlap's Sons, 35 S. Broad St.

PHOENIXVILLE, PA.: Werner Bus Lines, 142 Pennsylvania Ave.

PITMAN, N. J.: Woodward's Auto Supply, 162 S. Broadway.

POTTSTOWN, PA.: Bechtel's Sports Shop, 157 High St.

POTTSVILLE, PA.: Joe Biltheiser, Penn Cigar Store.

READING, PA.: Park Bowling, 1016 Penn St.; Neubling's, 9th and Penn St.

SPRINGHOUSE, PA.: Springhouse Tavern.

TRENTON, N. J.: George Case Sporting Goods, 121 E. Hanover St.

UPPER DARBY, PA.: Terminal Ticket Office, 69th and Market Sts.

WILLOW GROVE, PA.: Bednarik Sporting Goods, 37 Easton Road.

WILMINGTON, DEL.: Wilmington Sporting Goods, 1009 Tatnall St.

YORK, PA.: Central Ticket Agency, Western Union Lobby.

GET YOUR TICKETS NOW!

Remember, the earlier you apply the better locations you will receive. Attached below is an application blank for the remaining five games this season at Connie Mack Stadium. Don't get shut out for the big games for with this fine Eagles team, one of the better balanced in the league, going so well, you'll want to see them in every game. Win, lose or draw, the Eagles will provide you with the best football in the land!

APPLICATION FOR 1955 SINGLE GAME TICKETS

THE PHILA. EAGLES, INC. FOOTBALL CLUB
15TH & LOCUST STS., PHILADELPHIA 2, PA.

Enclosed is my check for \$ for tickets to the following games at Connie Mack Stadium:

No. of
Tickets

Washington Redskins, Saturday, Oct. 1, 7:35 P.M. (EDT)

@ \$5.00 ☐ — \$4.00 ☐ — \$3.00 ☐ — \$2.00 ☐

Pittsburgh Steelers, Sunday, Oct. 30, 2:05 P.M. (EST)

@ \$5.00 ☐ — \$4.00 ☐ — \$3.00 ☐ — \$2.00 ☐

Cleveland Browns, Sunday, Nov. 13, 2:05 P.M. (EST)

@ \$5.00 ☐ — \$4.00 ☐ — \$3.00 ☐ — \$2.00 ☐

Los Angeles Rams, Sunday, Nov. 27, 2:05 P.M. (EST)

@ \$5.00 ☐ — \$4.00 ☐ — \$3.00 ☐ — \$2.00 ☐

Chicago Cardinals, Sunday, Dec. 4, 2:05 P.M. (EST)

@ \$5.00 ☐ — \$4.00 ☐ — \$3.00 ☐ — \$2.00 ☐

NAME
(Please Print)

PHONE

ADDRESS

CITY ZONE STATE

All prices include Taxes. Make Checks Payable to "Philadelphia Eagles." Add 35c to cover insurance and mailing.

EAGLES NEST ON WPFH

The Eagles Nest, an entertaining and informative show that takes you behind the scenes of professional football, will be seen every Tuesday night starting at 9:30 P.M. over TV Station WPFH, Channel 12. Bosh Pritchard will emcee the weekly show with Head Coach Jim Trimble as his permanent guest. Members of the Eagles' squad and others well known in pro football will be guests on the different shows. The Interstate Loan Co. is sponsoring the Eagles Nest.



*Light up a Lucky—
it's light-up time!*

LUCKIES TASTE BETTER

Cleaner, Fresher, Smoother!



**"IT'S
TOASTED"**
to taste
better!

© A. T. Co. PRODUCT OF *The American Tobacco Company* AMERICA'S LEADING MANUFACTURER OF CIGARETTES

EAGLES TITLE - BOUND

By Herb Good

Philadelphia Inquirer Football Writer

After patient years of rebuilding, after much trial and much error, are the Eagles finally ready for the all-out effort needed to bring back the National Football League pennant to the Quaker City? Just about every sign indicates that they are.

Most of the experts have installed the Green and White as the favorite to end Cleveland's long reign in the Eastern Conference as a result of compiling the best record in pre-season competition.



Herb Good

But this dazzling pre-season achievement in itself is not sufficient reason for unusual optimism. Since Jim Trimble has been head coach the Eagles have made a habit of doing well during the warm-up period. They won the "hinterland title" two years ago and yet finished a relatively poor second behind the Browns.

Last season they won their last five warm-up games, got off to a flying start in the regular campaign, but bogged down amid a crop of injuries in mid-season and were unable to rebound fast enough to keep the Browns from sneaking off with the diadem.

Why then should this season be any different? Doesn't a team that reaches top efficiency before the season usually have a disastrous slump during the regular campaign?

For one thing, the spirit among the Eagles is the highest it has been since the championship days of '49. They sense this is the big year toward which they've been striving and they're convinced they now have all the necessary weapons to reach the golden goal.

Thanks to such rookies as Dick Bielski, No. 1 draft choice from Maryland, and Ted Wegert, former Bainbridge star who never played college ball, and the transformation of defensive ace Jerry Norton into a ball carrier, the Birds now have a slashing ground attack to complement the devastating air arm directed by Adrian Burk and Bobby Thomason.

The overhead attack has been made more effective than ever by the use of Bobby Walston, leading NFL scorer as an end last year, at halfback in Trimble's new "three-end offense." It figures to take some of the pressure off veteran Pete Pihos and enable him to have his greatest season yet. The pre-season victory

over the Chicago Bears here in the 18th Inquirer Classic was achieved through the air largely by means of the three-end strategy.

More speed and blocking strength has been added to the offensive line by Buck Lansford, rookie tackle from Texas; Bill Stribling, an experienced end who played previously with the New York Giants; Bob Kelley, first-year center from West Texas State, and the ageless Bucko Kilroy, who'll start his 13th season on offense rather than defense.

The defense, second best in the league last year, shapes up as strong as ever, if not stronger, with the switch of tackle Frank Wydo from the offensive unit, and the addition of tackle Jim Weatherall, former Oklahoma All-American, on the line and return from service of Bibbles Bawel and debut of Eddie Bell, Penn All-American, in the secondary.

The most vital difference, however, in the current squad is that it has considerably more depth than the teams of the past couple seasons. Almost every player can play two positions with equal effectiveness and this gives the team much desired versatility.

The Eagles had two or three players sidelined with injuries during the playing of the pre-season schedule—key veterans such as Jim Parmer, the club's leading ground gainer last year; Toy Ledbetter, Ralph Goldston and Tom Higgins, among others—yet the Birds kept rolling over foe after foe, a most accurate tip-off on the team's greater depth.

To be sure, injuries to key personnel unquestionably would hurt the Eagles' chances, but not nearly so much as they did last season.

It isn't likely that the Birds are so far advanced at this stage as to have a letdown later. Six new players are on the offensive unit and they are only starting to function smoothly together and should improve steadily as the season progresses.

Despite their enviable record, the Eagles' play was quite spotty in most of the tune-up games. But they gave this observer the impression of a club with tremendous latent power backed up with furious desire not unlike a giant airliner straining impatiently for the skies while the motors are being warmed up on the runway.

There's no telling how high the Birds might soar if they find their wings strong and true in this opening flight against the Giants.

This is the test that tells the story!



EAGLES' COACHING STAFF: (L. to R.) Abe Stuber, Backfield Coach; Chas. Gauer, End Coach; Jim Trimble, Head Coach; Chuck Drulis, Line Coach.

THE EAGLES' BIOGRAPHIES

ENDS

ROBERT HAROLD WALSTON

Age	Ht.	Wt.	College	Yr. Eagle	Residence
26	6'	185	Georgia	5th	Glennville, Ga.

Bobby . . . Sure-Foot . . . the hardluck kid of 1954 . . . well on his way to new scoring record when came a cropper in fifth game . . . in first four games scored 70 points (league record is 138) . . . fractured jaw at Pittsburgh and used only to kick extra points in next three games . . . still led team in touchdowns scored with 11 . . . caught 31 passes for 581 yards . . . kicked 36 extra points out of 39 and four field goals in 10 tries . . . won scoring championship of NFL with 114 points . . . also won title as rookie-of-year in 1951 . . . pound for pound one of finest offensive ends in league . . . scored three times against Cardinals (10/3) and three times against Washington (10/17) . . . in four years Walston has caught 129 passes for 2312 yards and 27 touchdowns . . . has kicked 140 out of 149 extra points and 25 field goals in 54 tries . . . will also be used as offensive halfback in 1955 . . . married, father of daughter and lives in Georgia.

Walston's Pass-Reception and Scoring Record:

Year	No.	Yds.	Long Pass	TD	EXP	FG	Tot. Pts.
1951 ..	31	512	43	8	28	6	94
1952 ..	26	469	65	3	31	11	82
1953 ..	41	750	62	5	45	4	87
1954 ..	31	581	t75	11	36	4	*114
	129	2312	75	27	140	25	377

t Touchdowns. * High in league.

PETER LOUIS PIHOS

Age	Ht.	Wt.	College	Yr. Eagle	Residence
31	6'1	210	Indiana	9th	Paoli, Pa.

Big Pete . . . greatest end in National League . . . back for his ninth season under big top and all with Eagles . . . rookie member of Eagles' first divisional championship team in 1947 . . . led league in pass receiving in 1953 with 63 and tied for top last year with 60 . . . gained 1049 yards on aerials in 1953 and added 872 last year . . . also tallied 10 touchdowns in each of last two seasons . . . in eight top years with Eagles, Pihos has caught 311 passes for 4755 yards and 54 touchdowns, all of which are Eagles' club records . . . has starred in all five All-Pro Bowl games in Los Angeles . . . one of few utility men in professional football . . . could play most any position on team . . . Jim Trimble, head coach, calls Pihos "greatest opportunist." "Pete will catch the one you need to get out of the hole" . . . has fierce pride in everything he does . . . lives in Philadelphia suburb with wife and three children.

Pihos' Pass-Reception Record

Year	No.	Yards	Long Pass	TD's
1947	23	382	t66	7
1948	46	766	48	11
1949	34	484	49	4
1950	38	447	43	6
1951	35	536	38	5
1952	12	219	t47	1
1953	*63	1049	59	10
1954	†60	872	34	10
	311	4755	66	54

* High for League. † Tied for first. t Touchdowns.

THOMAS COSTER SCOTT, JR.

Age	Ht.	Wt.	College	Yr. Eagle	Residence
25	6'2	220	Virginia	3rd	Elkins Park, Pa.

Scottie . . . played left defensive end ever since first day reporting to Eagles in September, 1953 . . . hasn't missed a single minute of action . . . rated one of cleverest defensive wingmen in National League . . . teams with Wildman Willey to give Eagles top two in NFL . . . All-American in football and lacrosse in senior year (1952) at Virginia . . . high draft choice by Los Angeles Rams . . . secured by Eagles prior to opening of 1953 season . . . married.

MAJURE BLANKS STRIBLING

Age	Ht.	Wt.	College	*Yr. Eagle	Residence
27	6'1	205	Mississippi	1st	Taylorsville, Miss.

Bill . . . three years' experience with New York Giants . . . led Giants' receivers in 1952 . . . named All-Southeastern Conference end last year at Ole Miss 1950 . . . veteran of 18 months in Army . . . single.

* Three years with the New York Giants.

NORMAN EARLE "WILD MAN" WILLEY

Age	Ht.	Wt.	College	Yr. Eagle	Residence
27	6'3	225	Marshall	6th	Penns Grove, N. J.

Wild Man Willey, a name to remember in the NFL . . . one of the most talented players in pro football . . . able to play almost any position on the team . . . rated the number one defensive end in 1954 and selected on the All-Pro team . . . also named to All-Pro Bowl game in Los Angeles where he scored a touchdown on recovered fumble for East team . . . played offensive end in 1954 during Bobby Walston's recuperation . . . in college sparkled as fullback and end and won national renown as a basketball player . . . his wit and agile mind keep team relaxed and entertained on road trips . . . on the field he's a wild man who likes nothing better than to smack down enemy passers . . . married college sweetheart.

TACKLES

THOMAS JOSEPH HIGGINS

Age	Ht.	Wt.	College	*Yr. Eagle	Residence
25	6'2	230	North Carolina	2nd	Newark, N. J.

Tom . . . rookie with Chicago Cardinals in 1953 . . . released during 1954 training and signed by Eagles . . . played substitute guard and tackle for Birds last season . . . married.

* Played 1953 with Chicago Cardinals.

MICHAEL JARMOLUK, JR.

Age	Ht.	Wt.	College	*Yr. Eagle	Residence
32	6'5	250	Temple	7th	Broad Axe, Pa.

Big Mike . . . back for his 10th season in NFL . . . came out of voluntary retirement after an-

nouncing he was hanging up his cleats at close of 1954 season . . . urge to play again "too strong to resist" . . . tower of strength as right defensive tackle . . . fast and agile enough to play both ways . . . started in pro football with Chicago Bears in 1946 . . . joined Eagles in 1949. * Played with Chicago Bears, 1946-47; Boston Yanks, 1948; New York Bulldogs, start of 1949.

ALEX JOHN LANSFORD

Age	Ht.	Wt.	College	Yr. Eagle	Residence
21	6'2	230	Texas	Rookie	Carizzo Spr'gs, Tex.

Buck . . . tall, tough Texan . . . All-Southwest Conference tackle in 1954 . . . co-captain of Texas Longhorns in 1954 . . . started every game at tackle for three varsity seasons . . . called number one defensive lineman in Southwest . . . older brother, Jim, All-Conference tackle on Texas' conference championship team in 1950 . . . used as place-kicker in 1954 first time and missed only three conversions in 15 tries . . . Eagles' number two draft choice for 1955.

JESSE WILLIAM RICHARDSON

Age	Ht.	Wt.	College	Yr. Eagle	Residence
25	6'2	240	Alabama	3rd	Philadelphia, Pa.

Jess . . . Cap'n Easy . . . called most improved tackle on squad last year . . . filled in at left defensive tackle replacing Vic Sears and did remarkable job . . . home town product from Roxborough High . . . fast for big man and hard to dislodge . . . played guard at Alabama . . . single.

KENNETH DAVID SNYDER

Age	Ht.	Wt.	College	Yr. Eagle	Residence
25	6'5	230	Georgia Tech.	4th	Elkins Park, Pa.

Lum . . . raw-boned, lean and tough . . . fastest lineman on Eagles . . . plays offensive tackle on right side . . . named to All-Pro Bowl game last two years . . . hailed by coaches for desire and competitive spirit . . . first man down field on punts and kickoffs . . . on way to top as insurance salesman . . . married and father of baby girl.

JAMES PRESTON WEATHERALL

Age	Ht.	Wt.	College	Yr. Eagle	Residence
25	6'4	235	Oklahoma	Rookie	Amarillo, Texas

Big Jim . . . originally drafted by Eagles for 1952 season . . . spent next two years in Marines . . . played with championship Edmonton team in Canada last year . . . named unanimous All-American two straight years while in college . . . awarded Outland Trophy as nation's outstanding senior lineman . . . kicked 76 of 94 extra points in 1950 and 1951 . . . speed big asset . . . married.

(Continued on Page 13)

dial



**for the
EAGLES'
away games!**

Sunday	Oct. 9	Eagles vs Cleveland Browns	3:00 PM
Saturday	Oct. 15	Eagles vs Pittsburgh Steelers	7:30 PM
Sunday	Oct. 23	Eagles vs Chicago Cardinals	2:00 PM
Sunday	Nov. 6	Eagles vs Washington Redskins	2:00 PM
Sunday	Nov. 20	Eagles vs New York Giants	2:00 PM
Sunday	Dec. 11	Eagles vs Chicago Bears	2:00 PM

presented by Atlantic Refining and Ford Motor Co.

... more thrills Mondays at 9 PM !

NOTRE DAME FOOTBALL HIGHLIGHTS

WFIL-TV

channel



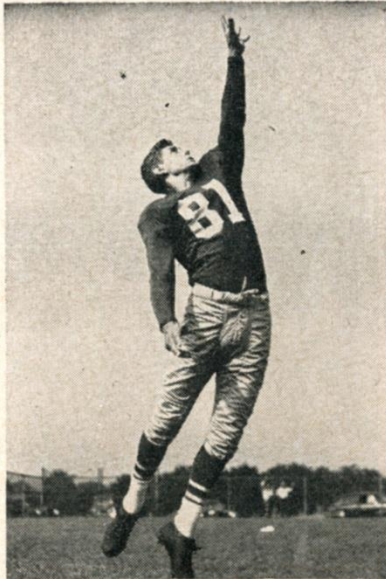
**... the fighting Irish in action
against the nation's top collegiate teams**

presented by M. A. Bruder & Sons

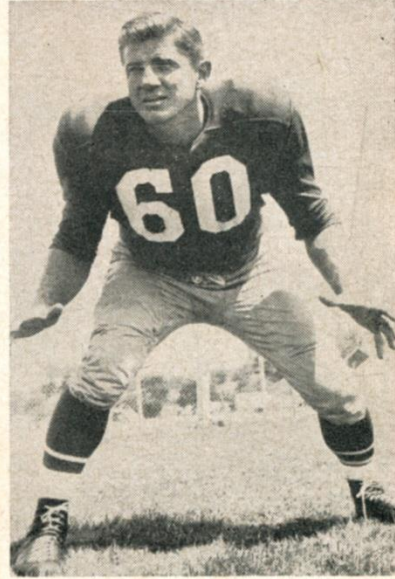
WATCH THESE EAGLES IN ACTION!



ROY BARNI, HB



BIBBLES BAWEL, HB



CHUCK BEDNARIK, C-LB



EDDIE BELL, E-HB



CHEVROLET

*Deal direct for
your **BIG DEAL!***

NEW CHEVROLETS

*All Models and Colors
PRICED TO SELL!*

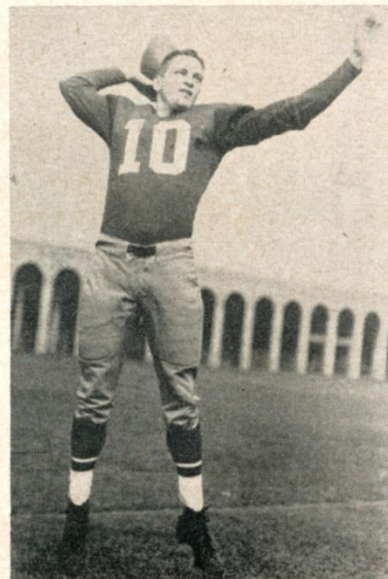
DOAN-CALHOUN
"The Chevrolet Tycoons"

4605-13 N. 5th St., Phila.

Open Sun. & Eves. DA 4-2500



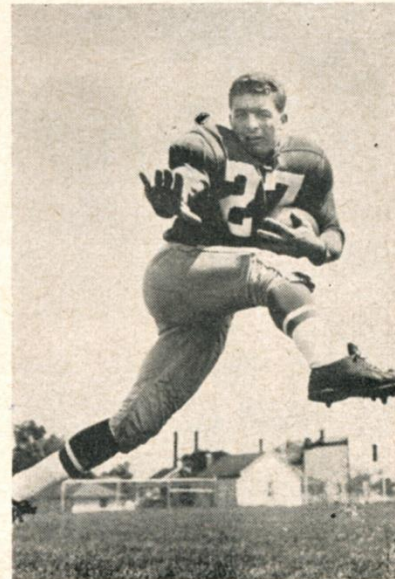
DICK BIELSKI, FB



ADRIAN BURK, HB



HARRY DOWDA, HB



HAROLD GIANCANELLI, HB

WATCH THESE EAGLES IN ACTION!



RALPH GOLDSTON, FB



TOM HIGGINS, T




BOB HUDSON, HB



KEN HUXHOLD, G

**ACCIDENT
& HEALTH**
**LIFETIME INCOME
PROTECTION**
HOSPITAL • MEDICAL
SURGICAL

Mutual 
OF OMAHA

Mutual Benefit Health & Accident Assn.

LARGEST EXCLUSIVE HEALTH &
ACCIDENT CO. IN THE WORLD

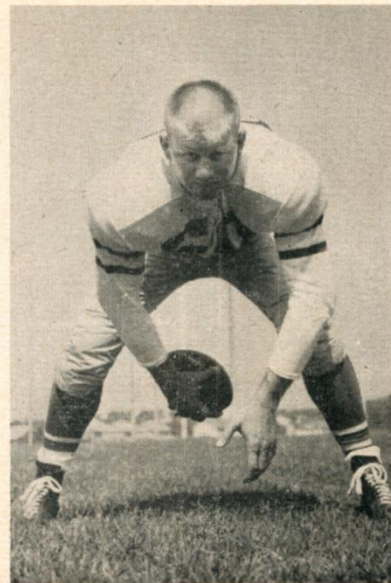
Kingsley 6-1500
FIDELITY-PHILA. TRUST BLDG.
123 SOUTH BROAD STREET
PHILADELPHIA, PA.



MIKE JARMOLUK, T



DON JOHNSON, HB



BOB KELLEY, C



FRANK KILROY, G



Always
dependable

Reddy Kilowatt

YOUR RELIABLE ELECTRIC SERVANT

PHILADELPHIA ELECTRIC COMPANY

A BUSINESS-MANAGED, TAX-PAYING UTILITY COMPANY OWNED BY MORE THAN 100,000 STOCKHOLDERS



U.S. OLYMPIC COMMITTEE



AMERICAN AUTOMOBILE ASS'N



AMATEUR ATHLETIC UNION



NAT'L COLLEGIATE ATHLETIC ASS'N



NAT'L AERONAUTIC ASS'N



AMERICAN POWER BOAT ASS'N



NAT'L HORSE SHOW ASS'N

Longines

THE WORLD'S MOST HONORED WATCH

Official Watch for the

PHILADELPHIA EAGLES

Quality leader among the finest watches of the world is Longines—winner of 10 World's Fair Grand Prizes and 28 Gold Medals for excellence and elegance, highest Observatory Honors for accuracy.

Of special interest to sportsmen is a series of highly efficient Longines Automatic Watches employing an exclusive self-winding principle. They are shock-resistant, anti-magnetic, with unbreakable mainsprings; many are waterproof*. These outstanding Longines watches are priced from \$75 to \$195.

*as long as crystal, back and stem are intact.



Longines
Oslo Automatic.
14K gold waterproof* case.
Sweep second hand. \$195.

SOLD AND SERVICED
BY MORE THAN
4000 LEADING JEWELERS WHO
PROUDLY DISPLAY THIS EMBLEM



WATCH THESE EAGLES IN ACTION!



BUCK LANSFORD, T



TOY LEDBETTER, HB



JOHN MAGEE, G



JERRY NORTON, HB

WINNING MORE FANS
EVERY DAY BECAUSE...

REGULAR GRIND
Boscul
THAT GOOD CUP OF
COFFEE

Boscul Coffee is now Enriched with
**GENUINE
MOCHA COFFEE**
for Extra Flavor



JIM PARMER, FB



PETE PIHOS, E



JESS RICHARDSON, T



WAYNE ROBINSON, C-LB

**No matter
which one**

you

choose

you can't

lose

with

Gibson's

LEAGUE LEADERS

		Team	1954 Record
Ground Gaining	Perry	49ers	1049 yds. gained
Passing	Van Brocklin	Rams	2637 yds. gained
Pass Receiving	Pihos	Eagles	872 yds. gained
Scoring	Walston	Eagles	114 total points
Punting	Brady	Steelers	43.2 Av. Dist.
Punt Returns	Switzer	Packers	12.8 Av. Dist.
Kickoff Returns	Reynolds	Browns	29.5 Av. Dist.



Gibson 4X

rich and robust

4⁴⁵
4/5 qt.

2.80 pt.



Gibson 8

smooth and light

4¹²
4/5 qt.

2.60 pt.

GIBSON'S XXXX RYE WHISKEY, A BLEND 86.8 PROOF, 51% STRAIGHT RYE WHISKEY, 49% GRAIN NEUTRAL SPIRITS

GIBSON DIAMOND 8 BLENDED WHISKEY, 86 PROOF, 65% GRAIN NEUTRAL SPIRITS. GIBSON DISTILLING CO., ALADDIN, PA.

OUTFITTERS OF
PHILADELPHIA EAGLES

With

MacGregor[®]

FOOTBALL EQUIPMENT — used by leading professional football
and baseball teams and college
and high school teams through-
out the country.

MITCHELL & NESS

Distributors

1312 ARCH STREET

PHILADELPHIA

LETTERPRESS PRINTING and OFFSET LITHOGRAPHY

Smith-Edwards
C O M P A N Y

1413-21 VINE STREET • PHILADELPHIA 2, PA. • LO 7-1441

Printers for The Philadelphia Eagles

FRANK WYDO

Age	Ht.	Wt.	College	*Yr. Eagle	Residence
31	6'4	235	Cornell-Duquesne	4th	Hibbs, Pa.

Big Pal . . . started every game as left offensive tackle since joining Eagles in 1952 . . . played five good years with Pittsburgh Steelers before trade to Birds . . . fast man down field on punts and kickoffs . . . married and father of three children.

* Played with Pittsburgh, 1947-1951.

GUARDS**KENNETH WAYNE HUXHOLD**

Age	Ht.	Wt.	College	Yr. Eagle	Residence
26	6'1½	225	Wisconsin	2nd	Madison, Wis.

Hux . . . joined Eagles last year after Marine hitch . . . originally property of Chicago Cardinals . . . started 1954 as substitute left guard . . . wound up starting last six games on offense . . . fast and agile . . . All Big Ten tackle senior year at Wisconsin (1951) . . . played two years with Quantico Marines . . . rated best offensive guard in service . . . married.

FRANCIS JOSEPH KILROY

Age	Ht.	Wt.	College	Yr. Eagle	Residence
34	6'2	250	Temple	13th	Philadelphia, Pa.

Bucko . . . iron man of National Football League . . . 1955 season his 13th in NFL . . . owns almost incredible record for durability . . . oldest player in NFL in point of service . . . overlooked in college draft . . . walked into Eagles' office, June of 1943 and asked for tryout . . . indestructible Irishman, now rated finest middle guard in league, has played in even 100 straight league games prior to start of 1955 season . . . has missed only one NFL battle in 12 years or 137 games . . . ankle injury received in practice nine years ago forced Bucko to sit out Eagles game in New York, November 10, 1946, only game he missed in dozen seasons . . . adding pre-season and post-season games including three championship, three All-Pro Bowl and two Pro vs. All-Star games in 12 years, Bucko has participated in 149 straight or 199 out of a possible 200 . . . holds all-time Eagles record for durability and ranks with league's notable achievements . . . home town product from Temple University . . . boyish face and deceptive grin belie his toughness under fire . . . married and father of six children.

JOHN WESLEY MAGEE, JR.

Age	Ht.	Wt.	College	Yr. Eagle	Residence
32	5'10	220	Rice Institute	8th	Kaplan, La.

Maggie . . . Tank . . . most underrated guard in league . . . quiet, reserved, but a little guy who knows his job and does it well . . . surviving member of 1948-1949 championship team . . . starting right guard last six years . . . type to make excellent coach . . . married and father of two children.

EDWARD JOSEPH SHARKEY

Age	Ht.	Wt.	College	*Yr. Eagle	Residence
28	6'3	235	Duke	2nd	Arcadia, Florida

Irish . . . eight year in professional football . . . played four years with old New York Yankees and one each with Cleveland and Baltimore . . . purchased by Eagles for 1954 season . . . played guard and tackle as well as linebacker . . . one of fastest men in league . . . married and father of boy.

*Four years with New York Giants and one each with Cleveland and Baltimore.

CENTERS AND LINEBACKERS**CHARLES PHILIP "CHUCK" BEDNARIK**

Age	Ht.	Wt.	College	Yr. Eagle	Residence
30	6'3	230	Pennsylvania	7th	Abington, Pa.

Chuck is considered the finest center and linebacker in professional football . . . the 1955 season will be his seventh in the big time and all for the Eagles . . . named all-pro the last five years just as he was named All-American his three varsity years at University of Pennsylvania . . . starred in all five All-Pro Bowl games in Los Angeles . . . named MVP in 1954 classic . . . fiery competitor and great morale booster . . . acts as defensive team captain and also calls signals on defense . . . happiest when he's jamming opposition and smacking down ball carriers . . . in 1953 against Baltimore Colts, a game won by the Eagles at Connie Mack Stadium, 45-14, Chuck scored his first touchdown in pro football and promptly threw the football into the stands . . . he had scored on an intercepted pass . . . it will be recalled that in 1948 when playing his senior year for Penn against Columbia in New York, Chuck scored his collegiate touchdown and kicked the ball into the stands . . . kicks off for Eagles and reserve punter . . . Chuck was born and reared in Bethlehem, Pa. . . married childhood sweetheart and now makes his home in Abington, Pa., with wife, Emma, and four children . . . top salesman for wine company.

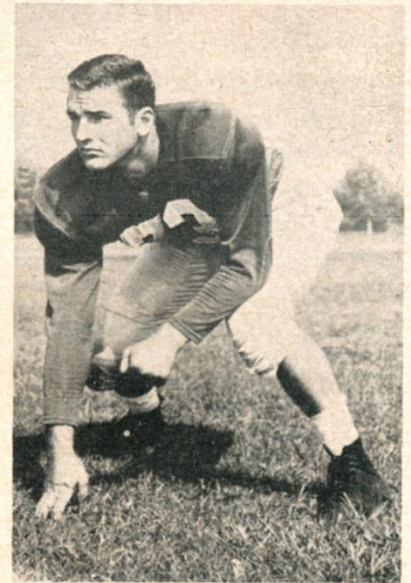
WATCH THESE EAGLES IN ACTION!



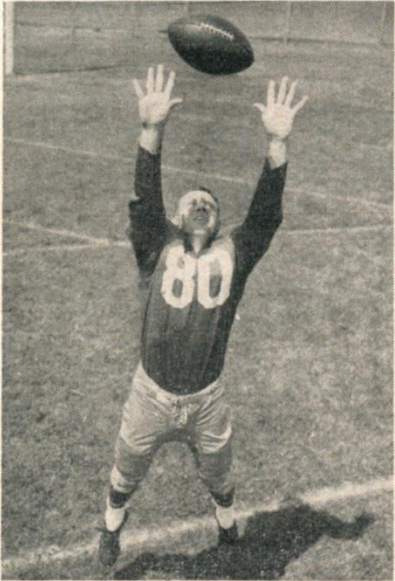
TOM SCOTT, E



ED SHARKEY, G-T

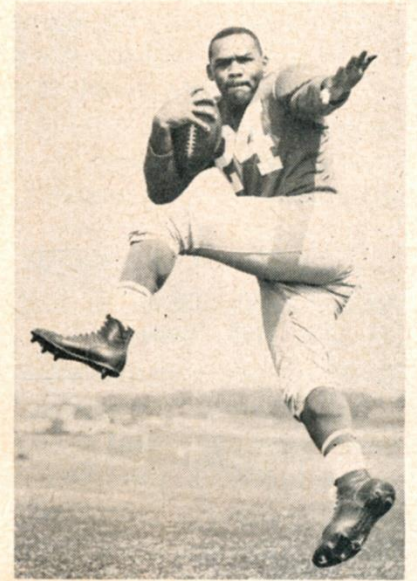


LUM SNYDER, T

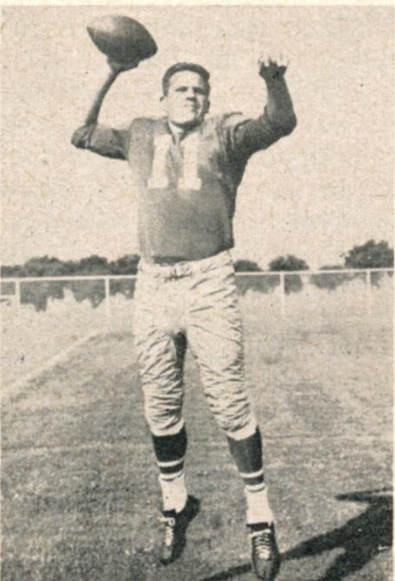


BILL STRIBLING, E

FELIN'S
ALL MEAT
HOT DOGS
MORRELL - FELIN CO.
4142 N. Germantown Ave.
Philadelphia 40, Pa.



GEO. TALIAFERRO, HB



BOBBY THOMASON, QB



BOBBY WALSTON, E-HB



JIM WEATHERALL, T

ROBERT KELLEY

Age	Ht.	Wt.	College	Yr. Eagle	Residence
25	6'2	225	W. Texas State	1st	Bovina, Texas

Tex . . . lean, tough and wiry . . . originally drafted for 1952 season but service in Navy delayed bow in professional football . . . started all pre-season games as offensive center . . . good blocker and quick in motion . . . could be one of rookies to make 1955 team . . . married.

WAYNE L. ROBINSON

Age	Ht.	Wt.	College	Yr. Eagle	Residence
25	6'2	230	Minnesota	4th	Minneapolis, Minn.

One of most talented linebackers in National League . . . agility and maneuverability chief assets . . . seldom caught out of position . . . hard, sure tackler . . . intercepted four passes for 41 yards in 1954 . . . one of six Eagles in All-Pro Bowl game in Los Angeles in January, 1955 . . . can play offensive center when necessary . . . captained 1951 Minnesota eleven and averaged better than 45 minutes per game during varsity career . . . married and father of two children.

QUARTERBACKS**ADRIAN MATTHEW BURK**

Age	Ht.	Wt.	College	*Yr. Eagle	Residence
27	6'2½	190	Baylor	5th	Henderson, Texas

Abe . . . Big A . . . teams with Bobby Thomason to give Eagles best quarterback corps in National League . . . finished sixth among NFL's top passers and ninth among punters in 1954 . . . against Washington last year at Griffith Stadium (10/17) tied league record with seven touchdown passes . . . led league in total TD flings with 23 . . . also had year's longest completed pass, 84-yarder to Jerry Williams, one of five TD's against Washington in Philadelphia (11/28) . . . last year completed 123 out of 281 attempts for 1740 yards and 23 td's . . . started pro career with old Baltimore Colts in 1950 . . . joined Eagles in 1951 . . . in five seasons in NFL Burk has thrown 769 passes, completed 351 for 5216 yards and 51 touchdowns . . . has done all punting for Eagles in last three years . . . averaged better than 40 yards per boot in 1954 . . . married, father of two children and lives in Texas.

* Played with Baltimore in 1950.

ROBERT LEE THOMASON

Age	Ht.	Wt.	College	*Yr. Eagle	Residence
27	6'1½	200	VMI	4th	Hatboro, Pa.

Bobby . . . one-half of Eagles' celebrated one-two quarterback punch . . . alternates with Adrian Burk as signal caller and passer . . . last season completed 83 out of 170 for 1242 yards and 10 touchdowns and had only 13 intercepted . . . came up with Los Angeles Rams in 1949 . . . absent from big time in 1950 but returned in 1951 . . . sent on lend-lease to Green Bay Packers . . . secured by Eagles for 1952 season . . . now in fourth year for Birds . . . in five years' competition in NFL, Bobby has thrown 919 passes, completed 471 for 6394 yards and 50 touchdowns . . . quarterback East team in All-Pro Bowl game in 1954 . . . married and lives with wife and daughter in Hatboro, Pa., Philadelphia suburb.

* Played with Los Angeles in 1949 and Green Bay in 1951.

BACKS**ROY BRUNO BARNI**

Age	Ht.	Wt.	College	*Yr. Eagle	Residence
28	5'11	185	San Francisco	2nd	San Francisco, Cal.

Barney . . . signed as free agent in 1954 and won starting defensive post in deep secondary . . . played two years with Chicago Cardinals prior to debut with Eagles in 1954 . . . named All-Coast halfback in sophomore year (1947) at San Francisco . . . played high school football and baseball at San Francisco's famed Galileo High School . . . intercepted two passes in 1954 . . . married.

* Played two seasons (1952-1953) with Chicago Cardinals.

EDWARD RAYMOND BAWEL

Age	Ht.	Wt.	College	Yr. Eagle	Residence
24	6'1	185	Evansville (Ind.)	2nd	Boonville, Ind.

Bibbles . . . nickname ties in with last name which is pronounced BOBBLE . . . returns to Eagles after two years in Army . . . played one year (1952) with Birds and performed sensationally in defensive backfield . . . signed as free agent as end candidate but converted to backfield by coach Jim Trimble . . . married.

EDWARD BELL

Age	Ht.	Wt.	College	Yr. Eagle	Residence
24	6'1	205	Pennsylvania	Rookie	Philadelphia, Pa.

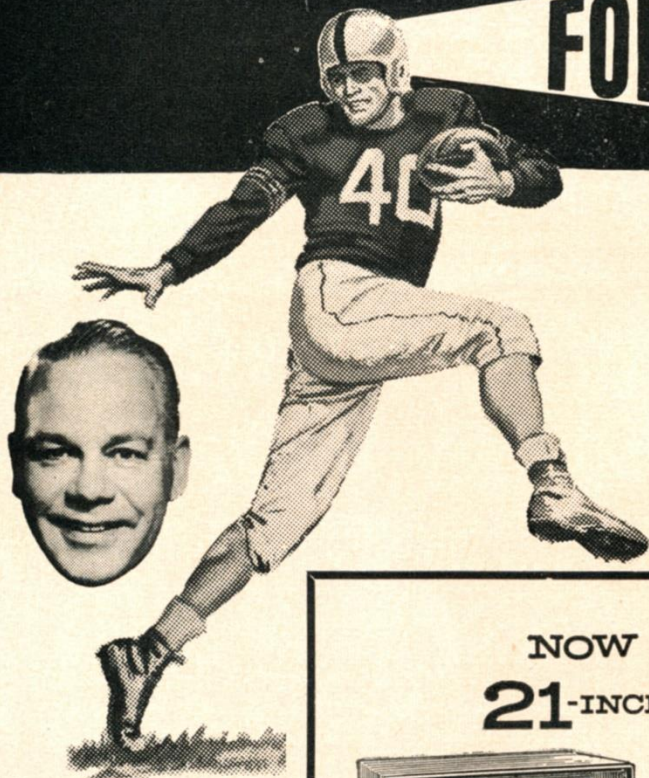
Joins Eagles after two-year hitch in Army . . . originally selected by Birds for 1953 season . . . All-American at Pennsylvania in 1952 . . . called finest defensive end and back in Red and Blue history . . . also outstanding as pass

(Continued on Page 31)

Follow The Leaders

FOR

COLOR TV



MORT FARR

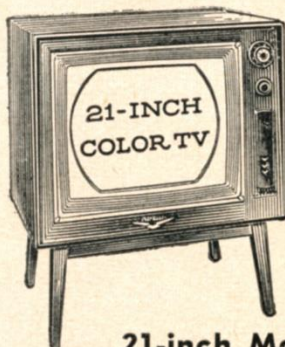
AND RCA VICTOR

First in Black and White ★ First in Color

TAVERNS and CLUBS:

Color TV is a big business draw! Bring your customers back by being first to show these outstanding events in COLOR. See Mort Farr for set and installation.

NOW ENJOY RCA VICTOR 21-INCH COLOR TV



BIG AS LIFE....
You can have full 21-inch Big Color TV in your home right now! Choose from two stunning new RCA Victor cabinet styles.

REAL AS LIFE...
See more and more new color shows *plus* standard telecasts in sharp, clear black-and-white. Both sets are compatible with UHF-VHF tuners!

**RCA COLOR TV
PRICES START AT ...**

\$395



21-inch Model 21CT661 ..\$795

SEE

all these games in

COLOR!

- ★ September 17 Miami University at Georgia Tech. 3:30 P.M.
- ★ October 15 Notre Dame at Michigan State 2:45 P.M.
- ★ October 29 Iowa at Michigan 2:15 P.M.
- ★ November 26 Army and Navy 1:15 P.M.
- ★ January 1 Rose Bowl
(and other games to be announced)
- ★ September 28 WORLD SERIES 12:45 P.M.

Plus 78 Color Shows Including 3 Spectaculars A Month!
(Five times last year's color TV schedule)

SEE

MORT FARR for the best in Color TV

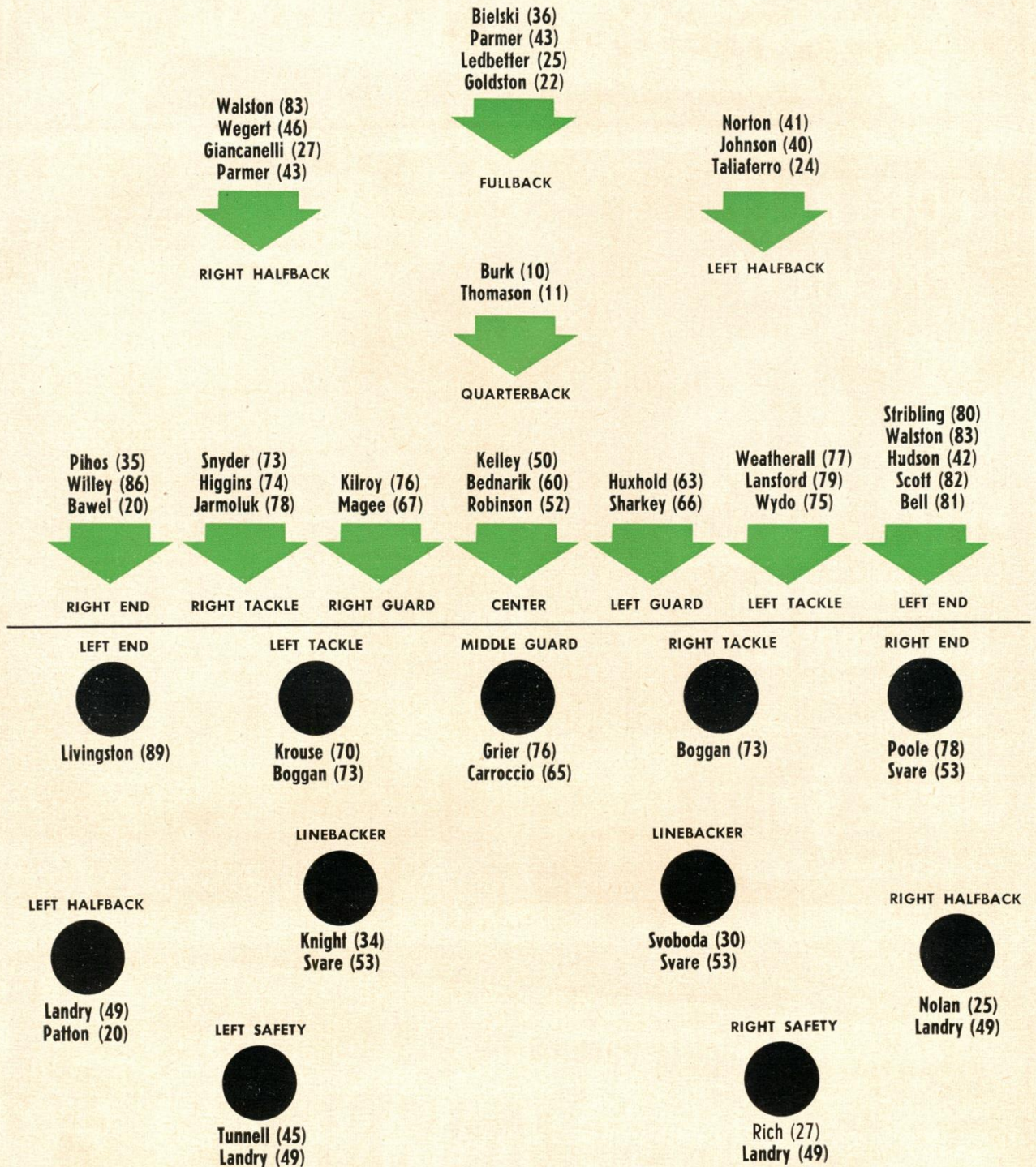
**FARR Better Service
For Over 30 Years**

69th Street below Chestnut
OPEN EVERY NITE 'TIL 10 P.M.

**Phones: GR 6-6060
FL 2-3400**

When THE EAGLES Have The Ball

EAGLES OFFENSIVE DEPTH



GIANTS DEFENSIVE DEPTH

WHEN THE GIANTS HAVE THE BALL, TURN TO PAGE 24

Leave it to the pros...

AFTER THE GAME, STEP OUT... ENJOY A
Calvert "Lo-Ball"
AS A PROFESSIONAL MAKES IT!



CALVERT DISTILLERS CO., N. Y. C. BLENDED WHISKEY—86.8 PROOF—65% GRAIN NEUTRAL SPIRITS

FOOTBALL PREVIEW

with
**GENE
KELLY**



every Saturday before
NCAA FOOTBALL

PRESENTED BY
Fidelity-Philadelphia Company

CHANNEL 3 WPTZ

First in Television in Philadelphia

EAGLES ROSTER

HEAD COACH: James W. (Tiny) Trimble

ASSISTANTS: Chuck Drulis, Line Coach; Charles Gauer, End Coach;

Abe Stuber, Backfield Coach

No.	Name	Pos.	Ht.	Wt.	Age	College	Yr. in League
10	Burk, Adrian	HB	6'2	200	27	Baylor	6th
11	Thomason, Bobby	QB	6'1	200	27	V M I	6th
20	Bawel, Bibbles	HB	6'1	185	24	Evansville (Ind.)	2nd
22	Goldston, Ralph	FB	5'11	195	26	Youngstown	4th
24	Taliaferro, Geo.	HB	6'	195	28	Indiana	6th
25	Ledbetter, Toy	HB	5'10	200	27	Okla. A & M	4th
27	Giancanelli, Harold	HB	5'10	179	26	Loyola (LA)	3rd
33	Barni, Roy	HB	5'11	185	28	San Francisco	4th
35	Pihos, Pete	E	6'1	207	31	Indiana	9th
36	Bielski, Dick	FB	6'1	215	23	Maryland	1st
40	Johnson, Don	HB	6'	187	23	California	3rd
41	Norton, Jerry	HB	5'11	200	24	S M U	2nd
42	Hudson, Bob	HB	6'4	220	25	Clemson	5th
43	Parmer, Jim	FB	6'	195	28	Okla. A & M	8th
44	Dowda, Harry	HB	6'2	205	30	Wake Forest	7th
46	Wegert, Ted	HB	5'11	195	23	No College	1st
50	Kelley, Bob	C	6'2	225	25	W. Texas State	1st
52	Robinson, Wayne	C-LB	6'2	220	25	Minnesota	4th
60	Bednarik, Chuck	C-LB	6'3	230	30	Pennsylvania	7th
63	Huxhold, Ken	G	6'1	215	26	Wisconsin	2nd
66	Sharkey, Ed	G-T	6'3	235	28	Duke	8th
67	Magee, John	G	5'10	220	32	Rice	8th
72	Richardson, Jess	T	6'2	235	25	Alabama	3rd
73	Snyder, Lum	T	6'5	230	25	Georgia Tech.	4th
74	Higgins, Tom	T	6'2	230	25	North Carolina	3rd
75	Wydo, Frank	T	6'4	235	31	Duquesne-Cornell	9th
76	Kilroy, Frank	G	6'2	250	34	Temple	13th
77	Weatherall, Jim	T	6'4	235	25	Oklahoma	1st
78	Jarmoluk, Mike	T	6'5	250	32	Temple	10th
79	Lansford, Buck	T	6'2	230	21	Texas	1st
80	Stribling, Bill	E	6'1	205	27	Mississippi	4th
81	Bell, Eddie	E-HB	6'1	208	24	Pennsylvania	1st
82	Scott, Tom	E	6'2	222	25	Virginia	3rd
83	Walston, Bobby	E-HB	6'	190	26	Georgia	5th
86	Willey, Norman	E	6'3	231	28	Marshall	6th

World Famous for Seafood Since 1865!

OLD ORIGINAL BOOKBINDER'S

125 WALNUT STREET • Philadelphia

The official watch for timing this game is LONGINES, "the world's most honored watch"



☆ STAR
PERFORMERS ☆

Here's the action you see at the pro games! With nearly everyone from both teams in on the action, one of the Eagles' Backs goes over the line carrying two Los Angeles Rams defense men with him.

Prest-o-lite hi-level Battery



**needs water only
3 times a year**

IN NORMAL CAR USE

LASTS LONGER, TOO!

Prest-O-Lite Battery Company, Inc., Toledo 1, Ohio

THE EAGLES

PROBABLE STARTING LINE-UP

No.	Name	Position
80	BILL STRIBLING	LE
77	JIM WEATHERALL	LT
63	KEN HUXHOLD	LG
50	BOB KELLEY	C
76	FRANK KILROY	RG
73	LUM SNYDER	RT
35	PETE PIHOS	RE
10	ADRIAN BURK	QB
41	JERRY NORTON	LHB
83	BOBBY WALSTON	RHB
36	DICK BIELSKI	FB

THE EAGLE SQUAD

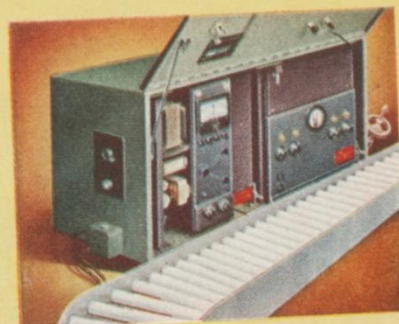
10 Burk, HB	60 Bednarik, C-LB
11 Thomason, QB	63 Huxhold, G
20 Bawel, HB	66 Sharkey, G-T
22 Goldston, FB	67 Magee, G
24 Taliaferro, HB	72 Richardson, T
25 Ledbetter, HB	73 Snyder, T
27 Giancanelli, HB	74 Higgins, T
33 Barni, HB	75 Wydo, T
35 Pihos, E	76 Kilroy, G
36 Bielski, FB	77 Weatherall, T
40 Johnson, HB	78 Jarmoluk, T
41 Norton, HB	79 Lansford, T
42 Hudson, HB	80 Stribling, E
43 Parmer, FB	81 Bell, E-HB
44 Dowda, HB	82 Scott, E
46 Wegert, HB	83 Walston, E-HB
50 Kelley, C	86 Willey, E
52 Robinson, C-LB	



America

Only Chesterfield is Made the Modern Way—with *AccuRay*

Today—discover for yourself what modern science can do to increase your cigarette enjoyment! Try Chesterfield —the cigarette made the modern way... measurably smoother... cooler... best for you!





is Best

THIS IS IT! L&M has the purest and best filter your lips ever touched... the pure, white Miracle Tip. What's more, L&M gives you a rich, good tasting, and fully satisfying smoke. No wonder smokers everywhere say, "L&M's got everything!"

L&M — America's Best Filter Cigarette!

THE GIANTS

PROBABLE STARTING LINE-UP

No.	Name	Position
85	BOB SCHNELKER	LE
79	ROOSEVELT BROWN	LT
60	BILL AUSTIN	LG
55	RAY WIETECH	C
66	JACK STROUD	RG
72	DICK YELVINGTON	RT
80	KEN MacAFEE	RE
42	CHUCK CONERLY	QB
16	FRANK GIFFORD	LHB
44	KYLE ROTE	RHB
31	BILL PRICE	FB

THE GIANTS SQUAD

8	Agajanian, E	53	Svare, C
11	Heinrich, QB	55	Wietecha C
12	Clatterbuck, QB	60	Austin, G
16	Gifford, HB	61	Beck, G
20	Patton, HB	62	West, G
22	Long, HB	65	Carroccio, G
25	Nolan, HB	66	Stroud, G
27	Rich, HB	67	Kennard, G
29	Webster, HB	70	Krouse, T
30	Svoboda, FB	72	Yelvington, T
31	Price, FB	73	Boggan, T
33	Triplett, FB	76	Grier, T
34	Knight, E	78	Poole, E
42	Conerly, QB	79	Brown, T
44	Rote, HB	80	MacAfee, E
45	Tunnell, HB	85	Schnelker, E
48	Heap, HB	89	Livingston, E
49	Landry, HB		

PURE WHITE



There's nothing
like a Coke

PHILADELPHIA EAGLES FIVE YEAR RECORD vs 1955 HOME OPPONENTS

NEW YORK GIANTS	
Eagles	Opponent
3	1950 7
7	9
24	1951 26
7	23
7	1952 31
14	10
30	1953 7
28	37
29	1954 14
14	27

WASHINGTON REDSKINS	
Eagles	Opponent
35	1950 3
33	0
23	1951 27
35	21
38	1952 20
21	27
21	1953 21
0	10
41	1954 33
49	21

PITTSBURGH STEELERS	
Eagles	Opponent
17	1950 10
7	9
34	1951 13
13	17
31	1952 25
26	21
23	1953 7
35	7
7	1954 17
24	22

CLEVELAND BROWNS	
Eagles	Opponent
10	1950 35
7	13
17	1951 20
9	24
7	1952 49
28	20
13	1953 37
42	27
0	1954 6
28	10

LOS ANGELES RAMS	
Eagles	Opponent
56	1950 20

CHICAGO CARDS	
Eagles	Opponent
45	1950 7
10	14
17	1951 14
10	1952 7
22	28
56	1953 17
38	0
35	1954 16
30	14



DRINK

Coca-Cola

IN BOTTLES

"COKE" IS A REGISTERED TRADE MARK

THE PHILADELPHIA COCA-COLA BOTTLING COMPANY

N. W. CORNER OF ERIE AVENUE & G. STREET, PHILADELPHIA 34, PENNSYLVANIA



SAM, JR.

Eat Where the
Eagles and other Pro
League Team
Players Eat

Tickets for Eagles Games
Sold up to 2 A.M.
every morning.



SAM FRAMO

Our Beautiful Air-
Conditioned Dining
Room Accommodates
150 People



JAMES

THE FRAMO'S "Shrimp Kings"

2242-44-46 WEST ALLEGHENY AVENUE

FOR RESERVATION—PHONE RA 5-9799—BA 9-0756—BA 9-8062

Private Parties—Banquets

Finest Steaks in Philadelphia

Small or Large Groups

GIANTS ROSTER

HEAD COACH: Jim Lee Howell

ASSISTANTS: Vince Lombardi, Backfield Coach;

Ed Kolman, Line Coach; Ken Kavanaugh, End Coach

No.	Name	Pos.	Ht.	Wt.	Age	College	Yr. in League
8	Agajanian, Ben	E	6'	215	36	New Mexico	5th
11	Heinrich, Don	Q	6'	180	24	Washington	2nd
12	Clatterbuck, Bob	Q	6'3	195	23	Houston	2nd
16	Gifford, Frank	HB	6'1	195	25	U S C	4th
20	Patton, Jim	HB	6'	190	23	Mississippi	1st
22	Long, Buford	HB	6'1	195	23	Florida	3rd
25	Nolan, Dick	HB	6'1	185	23	Maryland	2nd
27	Rich, Herb	HB	5'11	185	27	Vanderbilt	8th
29	Webster, Alex	HB	6'3	210	24	N. Carolina St.	1st
30	Svoboda, Bill	FB	6'	210	27	Tulane	5th
31	Price, Eddie	FB	5'11	190	29	Tulane	6th
33	Triplett, Mel	FB	6'1	215	23	Toledo	1st
34	Knight, Pat	E	6'2	210	26	S M U	3rd
42	Conerly, Charlie	Q	6'1	185	31	Mississippi	8th
44	Rote, Kyle	HB	6'	195	27	S M U	5th
45	Tunnell, Emlen	HB	6'1	183	30	Iowa	8th
48	Heap, Joe	HB	5'11	185	23	Notre Dame	1st
49	Landry, Tom	HB	6'1	195	30	Texas	7th
53	Svare, Harland	C	6'	215	24	Wash. State	3rd
55	Wietecha, Ray	C	6'1	215	26	Northwestern	3rd
60	Austin, Bill	G	6'1	225	26	Oregon State	5th
61	Beck, Ray	G	6'2	225	23	Georgia Tech.	2nd
62	West, Stan	G	6'2	235	28	Oklahoma	6th
65	Carroccio, Russ	G	6'	235	24	Virginia	2nd
66	Stroud, Jack	G	6'1	215	26	Tennessee	3rd
67	Kennard, George	G	6'	215	26	Kansas	4th
70	Krouse, Ray	T	6'3	260	28	Maryland	5th
72	Yelvington, Dick	T	6'2	230	28	Georgia	4th
73	Boggan, Rex	T	6'4	245	25	Mississippi	1st
76	Grier, Roosevelt	T	6'5	261	22	Penn State	1st
78	Poole, Barney	E	6'3	250	31	Mississippi	7th
79	Brown, Roosevelt	T	6'3	245	23	Morgan State	3rd
80	MacAfee, Ken	E	6'2	205	26	Alabama	2nd
85	Schnelker, Bob	E	6'4	215	25	Bowling Green	3rd
89	Livingston, Cliff	E	6'3	215	24	U C L A	2nd

SEE

NCAA Football Games

Exclusively on Television
every Saturday

PRESENTED BY

BENDIX & CROSLY

BLUE CROSS

GENERAL CIGAR

SCHICK

CHANNEL 3 WPTZ

First in Television in Philadelphia

"LET'S GO PHILADELPHIA"

HYGIENIC SANITATION CO.

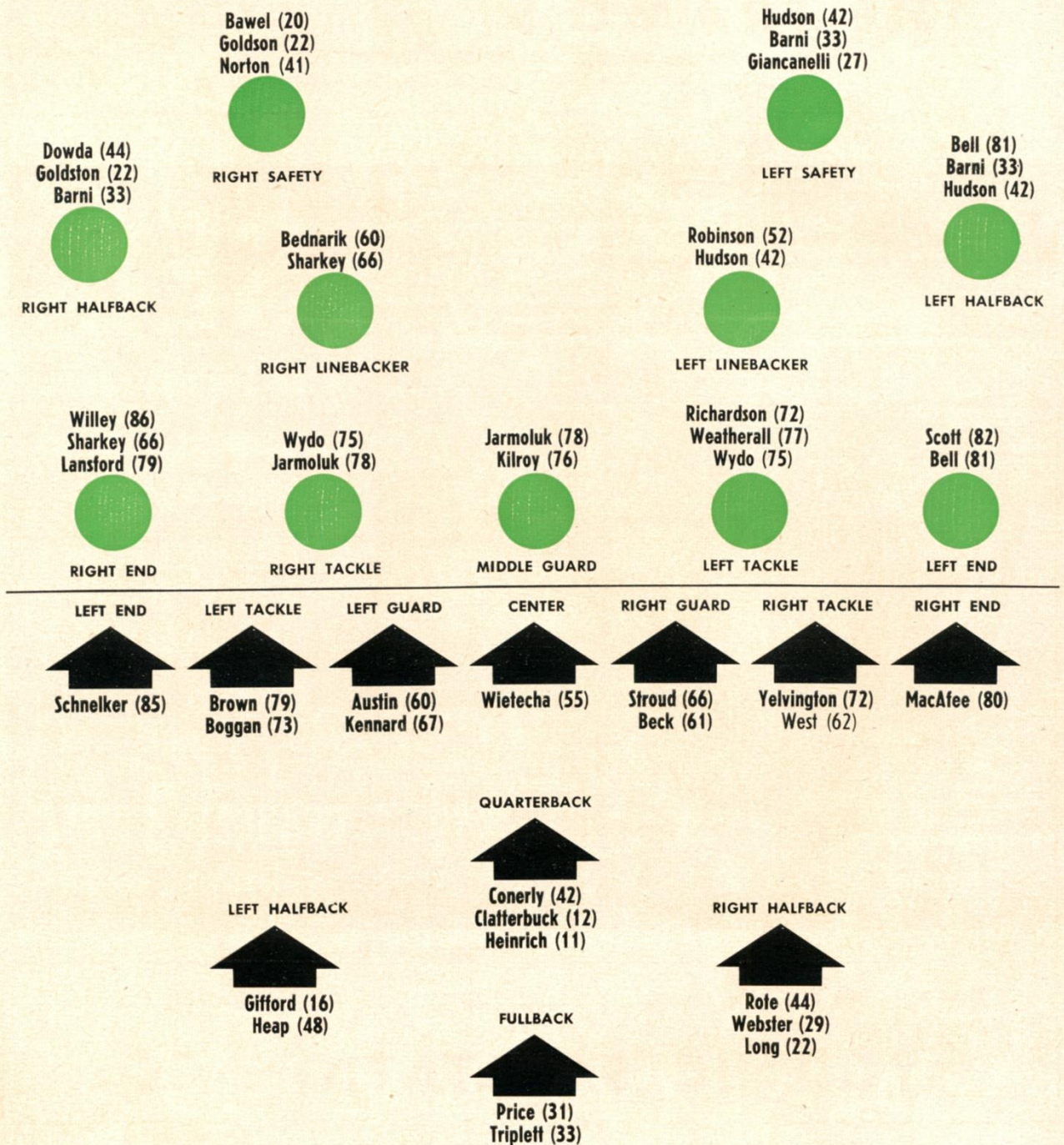
Philadelphia, Harrisburg, Johnstown, Altoona and Pittsburgh, Pa.;
Washington, D. C.; Baltimore, Cumberland, and Salisbury, Maryland;
Rochester and Olean, N. Y.; Louisville, Ky.;
Camden and Trenton, N. J.

LARGEST EXTERMINATING ORGANIZATION IN THE EAST

The official watch for timing this game is LONGINES, "the world's most honored watch"

When THE GIANTS Have The Ball

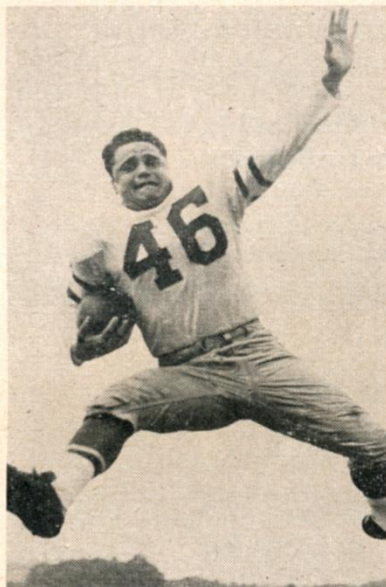
EAGLES DEFENSIVE DEPTH



GIANTS OFFENSIVE DEPTH

WHEN THE EAGLES HAVE THE BALL, TURN TO PAGE 17

WATCH THESE EAGLES IN ACTION!



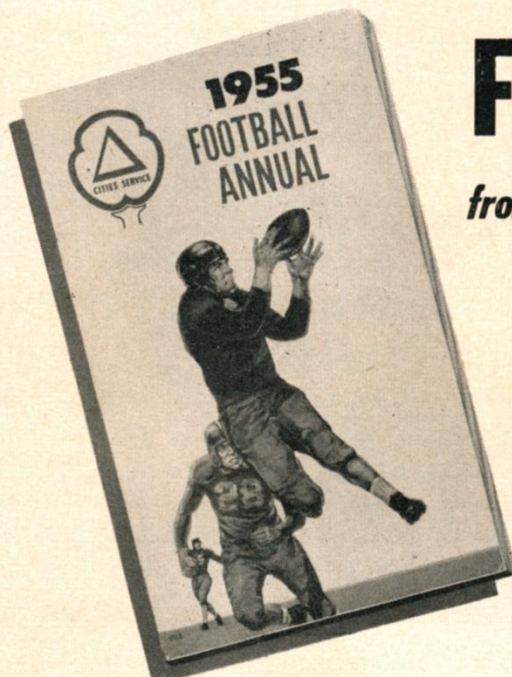
TED WEGERT, HB



NORMAN WILLEY, E



FRANK WYDO, T



FREE!

from your **CITIES SERVICE** *dealer*

It's yours for the asking! A complete 54-page pocket size gridiron guide.

Gives You:

A look at the stars for 1955 — football big-timers of the East, the South, the Mid-west, the South-west and the Far-west • Stories by the late Grantland Rice, Fred Russell of the Nashville Banner, Irving Marsh of the New York Herald-Tribune, Howard Roberts of the Chicago Daily News, Tommy Turner of the San Francisco Chronicle • An All-American check list of the most promising performers of 1955 • The ALL-STAR REVIEW, showing the Highlights and Heroes of 1954 • All official schedules including the professional National Football League.

Another **FREE** service from your **CITIES SERVICE** dealer.

STOP IN on your way home — *he'll be glad to serve you!*

CITIES SERVICE OIL CO. •

2012 CHESTNUT ST., PHILA. 3, PA. •

LOcust 7-0360

GAME FILMS ON TV

Complete films of all Eagles' football games will be shown every Monday night over TV Station WPFH, Channel 12, starting at 10:50. Bosh Pritchard, former Eagles' star, will handle the narration. Broad Motors will sponsor the film.

Get Glossy Pictures of Your Favorite Eagles' Players! Only 25 Cents Each . . .

Stop in at Eagles' Ticket Office or Mail
Necessary Amount Plus Six Cents Postage

3 TOP FAVORITES
Warwick Room
Embassy Room
Coach Room



The Warwick
 LOCUST AT SEVENTEENTH PEnnypacker 5-3800

HAUGHTON WEYMOUTH & BISHOP,
 Inc.

•
**INSURANCE BROKERS
 FOR THE EAGLES**

•
 BACKED BY 22 YEARS EXPERIENCE

•
 Fidelity-Philadelphia Trust Building
 Philadelphia 9, Pa.

PE 5-4524

NFL 1955 SCHEDULE

SATURDAY, SEPTEMBER 24 (Night)

New York at Philadelphia

SUNDAY, SEPTEMBER 25

Chicago Bears at Baltimore
 Detroit at Green Bay
 Los Angeles at San Francisco
 Washington at Cleveland

MONDAY, SEPTEMBER 26 (Night)

Chicago Cards at Pittsburgh

SATURDAY, OCTOBER 1 (Night)

Detroit at Baltimore
 Washington at Philadelphia

SUNDAY, OCTOBER 2

Chicago Bears at Green Bay
 Cleveland at San Francisco
 New York at Chicago Cards
 Pittsburgh at Los Angeles

SATURDAY, OCTOBER 8 (Night)

Baltimore vs. Green Bay at Milwaukee

SUNDAY, OCTOBER 9

Chicago Cards at Washington
 Los Angeles at Detroit
 New York at Pittsburgh
 Philadelphia at Cleveland
 San Francisco at Chicago Bears

SATURDAY, OCTOBER 15 (Night)

Philadelphia at Pittsburgh

SUNDAY, OCTOBER 16

Baltimore at Chicago Bears
 Chicago Cards at New York
 Cleveland at Washington
 Los Angeles vs. Green Bay at Milwaukee
 San Francisco at Detroit

SUNDAY, OCTOBER 23

Chicago Bears at San Francisco
 Detroit at Los Angeles
 Green Bay at Cleveland
 Philadelphia at Chicago Cards
 Pittsburgh at New York
 Washington at Baltimore

SATURDAY, OCTOBER 29 (Night)

Green Bay at Baltimore

SUNDAY, OCTOBER 30

Chicago Bears at Los Angeles
 Cleveland at Chicago Cards
 Detroit at San Francisco
 Pittsburgh at Philadelphia
 Washington at New York

SATURDAY, NOVEMBER 5 (Night)

Baltimore at Detroit
Pittsburgh at Chicago Cards

SUNDAY, NOVEMBER 6

Green Bay at Chicago Bears
New York at Cleveland
Philadelphia at Washington
San Francisco at Los Angeles

SUNDAY, NOVEMBER 13

Baltimore at New York
Chicago Cards at Green Bay
Cleveland at Philadelphia
Detroit at Pittsburgh
Los Angeles at Chicago Bears
San Francisco at Washington

SUNDAY, NOVEMBER 20

Chicago Bears at Detroit
Los Angeles at Baltimore
Philadelphia at New York
Pittsburgh at Cleveland
San Francisco vs. Green Bay at Milwaukee
Washington at Chicago Cards

THURSDAY, NOVEMBER 24 (Thanksgiving)

Green Bay at Detroit

SUNDAY, NOVEMBER 27

Chicago Bears at Chicago Cards
Cleveland at New York
Los Angeles at Philadelphia
San Francisco at Baltimore
Washington at Pittsburgh

SUNDAY, DECEMBER 4

Baltimore at Los Angeles
Chicago Cards at Philadelphia
Cleveland at Pittsburgh
Detroit at Chicago Bears
Green Bay at San Francisco
New York at Washington

SUNDAY, DECEMBER 11

Baltimore at San Francisco
Chicago Cards at Cleveland
Green Bay at Los Angeles
New York at Detroit
Philadelphia at Chicago Bears
Pittsburgh at Washington

MONDAY, DECEMBER 26

World's Championship Playoff Game in home city of Western Conference Champion.

**For complete
banking
and
trust services**

use

FIDELITY



A BILLION DOLLAR TRUST COMPANY —
A GREAT COMMERCIAL BANK

FIDELITY-PHILADELPHIA
TRUST COMPANY

Bankers since 1866

14 CONVENIENT OFFICES

In Philadelphia:

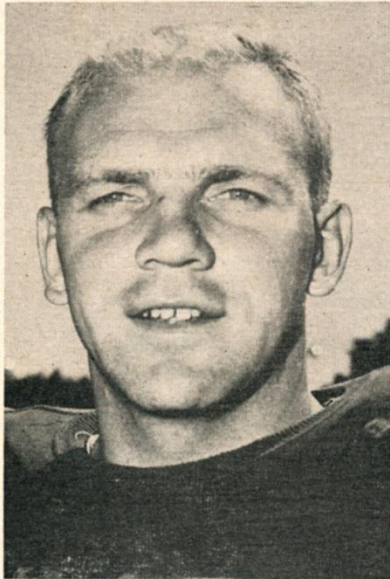
Broad and Walnut Streets
N.E. Cor. 3rd and Chestnut Streets
18th and Walnut Streets
5th Street above Olney Avenue
City Line Avenue west of Haverford Road
Ogontz Avenue at Washington Lane
Roosevelt Boulevard and Magee Avenue

In Delaware County:

Chester—5th and Market Streets (S.W. corner)
Chester—5th and Market Streets (S.E. corner)
Chester—Third and Yarnall Streets
Marcus Hook—Tenth and Market Streets
Clifton Heights—Baltimore Pike and Ogden Street
Clifton Heights—242 West Baltimore Avenue
Ridley Park—Swarthmore and Hinckley Avenues

Member Federal Deposit Insurance Corporation
Member Federal Reserve System

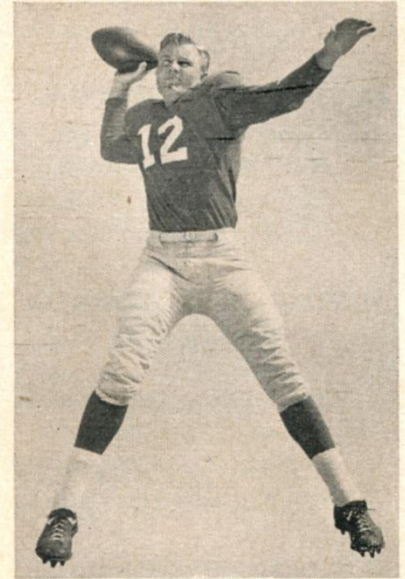
TONITE — WATCH THESE GIANTS IN ACTION!



BILL AUSTIN, G



ROOSEVELT BROWN, T



BOB CLATTERBUCK, QB



CHARLEY CONERLY, QB

PHILA'S STYLE-CENTER FOR MEN SINCE 1921

TOUCHDOWN!

You'll score everytime in clothing and furnishings from Boyd's . . . famous nationally for nationally famous brands in stock for

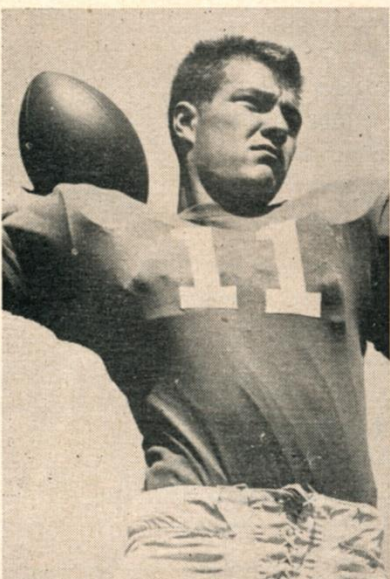
- TALL MEN UP TO 7-FEET
- STOUT MEN TO SIZE 60
- AND EVERY MAN IN-BETWEEN
- 5 MONTHS TO PAY

the BOYD store
FOR MEN
1217 MARKET ST.

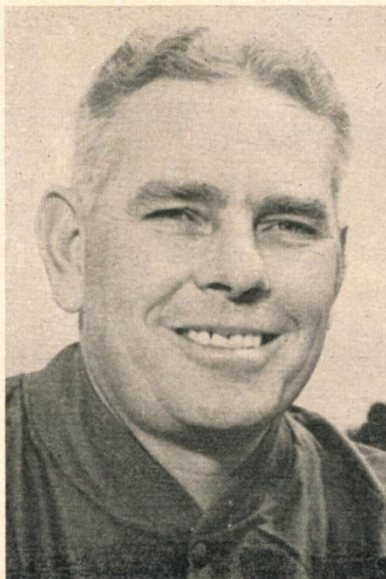
Open Mon., Wed., Fri. Eves; LO 7-9554



FRANK GIFFORD, HB



DON HEINRICH, QB



JIM LEE HOWELL, COACH

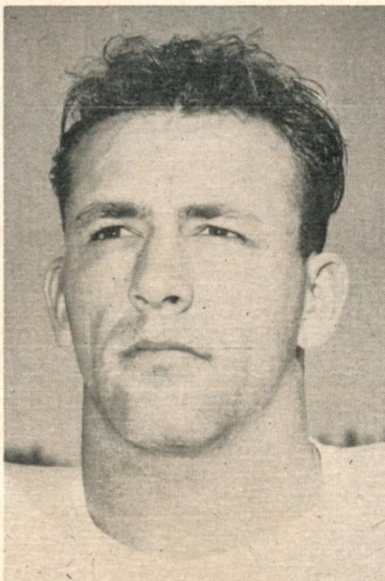


RAY KROUSE, T

TONITE — WATCH THESE GIANTS IN ACTION!



TOM LANDRY, HB



CLIFF LIVINGSTON, E



KEN MacAFEE, E



EDDIE PRICE, FB

?

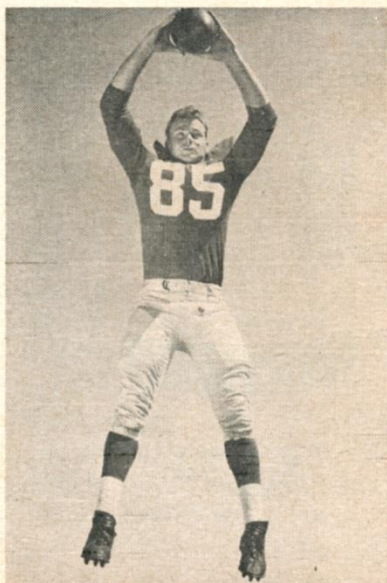
HAVE YOU TRIED
FIERSTIEN BROS.
PHILADELPHIA'S
**LARGEST GROWING
OLDSMOBILE DEALER**
You'll Be Surprised!

Listen to Steve Allison—WPEN—
11 P.M. - 2 A.M.

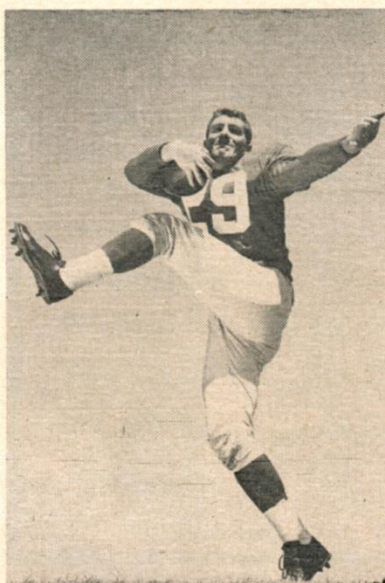
FIERSTIEN BROS.
6000 York Road - 5949 N. Broad St.
WA 7-1000



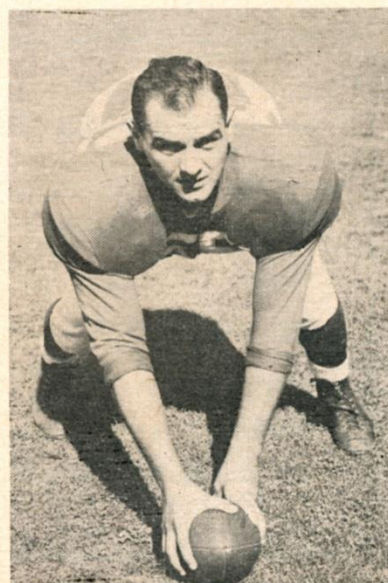
KYLE ROTE, HB



BOB SCHNELKER, E

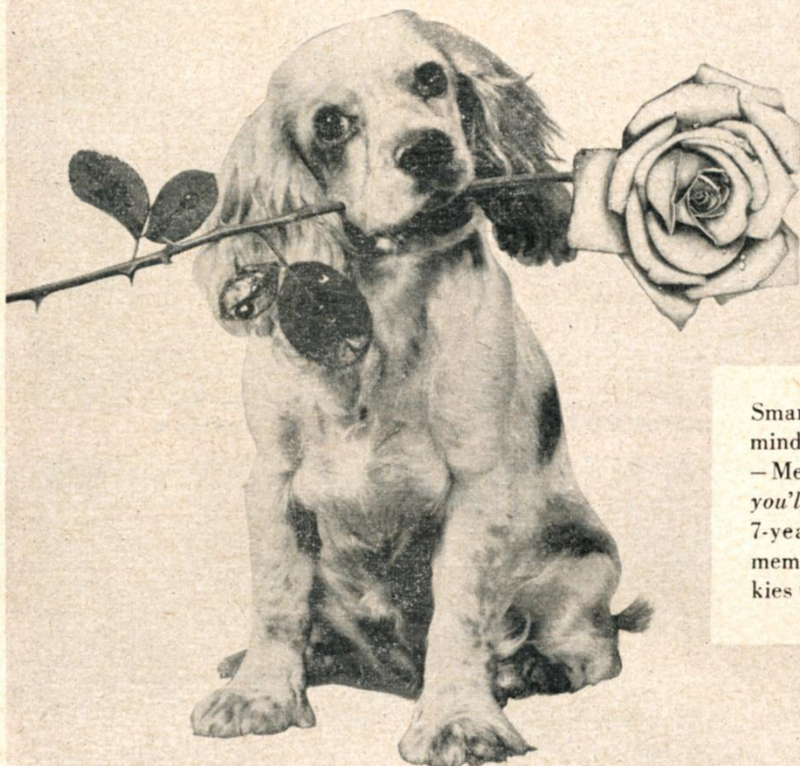


ALEX WEBSTER, HB



RAY WIETCHA, C

My master likes MELROSE



Smart pup! He calls the right play...reminds his master to drink "the very best" — Melrose Rare, of course. Once tasted, you'll never forget the flavor of its rare 7-year-old whiskies. And Melrose, remember, contains *more, older, finer* whiskies than any other leading spirit blend!

MELROSE

RARE



EAGLES PACE SETTERS

		Standing in League	1954 Record
Ground Gaining ..	Parmer	16th	408 yds. gained
Passing	Burk	6th	1740 yds. gained
Pass Receiving ..	Pihos	tied 1st	875 yds. gained
Scoring	Walston	1st	114 total points
Punting	Burk	9th	40.0 av. dis.
Kick-off Returns ..	Giancanelli	20th	22.7 av. dist.

\$4.80
4/5 Qt.

BLENDED WHISKEY, 90 PROOF. 40% STRAIGHT WHISKIES, 60% GRAIN NEUTRAL SPIRITS. MELROSE DISTILLERS COMPANY, NEW YORK

catcher . . . had standout day against Notre Dame in 1952 . . . scored touchdown on long pass to tie score at 7-7 and then later caught Johnny Lattner from behind to prevent ND score and preserve deadlock . . . play on Lattner called "greatest I ever saw" by Eagles' mentor, Jim Trimble . . . played one year of Army football at Fort Monmouth . . . wasn't interested in football until he entered West Philadelphia High . . . named All-Scholastic in senior year . . . married.

RICHARD ADAM BIELSKI

Age	Ht.	Wt.	College	Yr. Eagle	Residence
23	6'1½	220	Maryland	Rookie	Baltimore, Md.

Dick . . . Bulldozer . . . Eagles top draft selection for 1955 . . . expected to provide Eagles with punch missing since Steve Van Buren was injured in 1951 . . . runs hard and hits like his nickname, bulldozer . . . injuries plagued him for first half of 1954 season at Maryland . . . had field day in finale against Missouri NCAA-TV attraction on Thanksgiving Day . . . he scored twice and kicked four extra points . . . voted "Outstanding Player of the Game" in the North-South classic, outshining Alan Ameche, Wisconsin All-American . . . gained 105 yards out of total 230 . . . again in Senior Bowl game Bielski turned in top fullback performance . . . scored winning touchdown for South on 14-yard bull-like thrust up the middle . . . place kicking and conversions earned him the title of "The Collegiate Toe" . . . kicked ball into end zone on 27 out of 29 tries . . . as a sophomore averaged 4.8 yards per carry; as junior 6.4 and in 1954 5.1 even though used sparingly early part of season . . . has kicked field goals of 47, 45 and 40 yards . . . excelled defensively . . . Maryland coaches used movies of Bielski's blocking to teach other players . . . they call it "Picture Blocking" . . . unanimous All-Conference, All-South and All-Players All American . . . also named Ukrainian Athlete of Year . . . married, father of two-year old daughter, Debra-Jo, and makes his home in Baltimore where he was born.

HARRY C. DOWDA

Age	Ht.	Wt.	College	*Yr. Eagle	Residence
30	6'2	205	Wake Forest	2nd	Washington, D. C.

Yokum . . . joined Eagles last year after five seasons with Washington Redskins . . . won starting job with defensive secondary . . . intercepted two passes for 34 yards . . . won letters in baseball and football at Wake Forest . . . now playing seventh year in National League . . . married and father of two children.

* Played five seasons (1949-1953) with Washington.

HAROLD ARTHUR GIANCANELLI

Age	Ht.	Wt.	College	Yr. Eagle	Residence
26	5'10	179	Loyola (L. A.)	3rd	Los Angeles, Cal.

Skippy . . . last year carried ball 33 times for 47 yards . . . caught 14 passes for 195 and four touchdowns . . . in two years with Birds gained 178 yards on 77 tries . . . caught 34 passes for 591 yards and 10 td's . . . led team in kickoff returns in 1954 with 17 for 387 yards for 22.7 average . . . married.

RALPH PETER GOLDSTON

Age	Ht.	Wt.	College	Yr. Eagle	Residence
26	5'11	195	Youngstown	4th	Youngstown, Ohio

Goldie . . . one of rookie stars of 1952 season, gaining 210 yards on 65 carries . . . then broke a leg in pre-season game of 1953 . . . out entire season . . . returned last year and played all defense . . . married and father of two children.

ROBERT WILLARD HUDSON

Age	Ht.	Wt.	College	*Yr. Eagle	Residence
25	6'4	220	Clemson	3rd	Philadelphia, Pa.

Bob . . . led team in interceptions last year with eight for 89 yards . . . plays deep secondary . . . uses height and speed to best advantage . . . third year with Eagles as defensive back after playing offensive end two years with New York Giants . . . when secured on waivers from Giants, coach Trimble called it "one of our luckiest breaks" . . . "Bob has quick reactions," says Trimble. "He's able to cope with those tall, shifty ends" . . . married and father of young girl.

* Played two years (1951-1952) with New York Giants.

DONALD LEE JOHNSON

Age	Ht.	Wt.	College	Yr. Eagle	Residence
23	6'	187	California	3rd	Bakersfield, Cal.

Don . . . led Eagles in ground gaining as sensational rookie in 1953 . . . ground out 439 yards on 83 carries . . . came a cropper in 1954 and played only parts of first six games . . . suffered serious knee injury at Pittsburgh in October . . . later operated on and cartilage removed . . . his loss in 1954 seriously hampered team's offense . . . now sound of wind and limb again and looks to banner season . . . married and father of two baby daughters.

TOY LEDBETTER

Age	Ht.	Wt.	College	Yr. Eagle	Residence
27	5'10	200	Okl. A & M	4th	Tulsa, Okla.

Second best ground gainer for Eagles in 1954 . . . picked up 241 yards on 81 carries and one touchdown . . . caught 15 passes for 192 yards and three td's . . . heavy-duty back and tough

(Continued on Page 32)

... left side of face fractured in opening game of 1953 season in San Francisco ... but missed only next two games ... started with Eagles in 1950, played first 10 games then departed for Army service ... returned in 1953 ... in three seasons with Birds has gained 681 yards on 189 carries ... single.

JEROME RAYMOND NORTON

Age	Ht.	Wt.	College	Yr. Eagle	Residence
24	5'11½	185	SMU	2nd	Dallas, Texas

Rookie defensive back of 1954 ... likely to be used on offense in 1955 ... return of Bell and Bawel to defensive backfield will give Jerry chance to run ball ... intercepted five passes and returned one for 69 twisting, turning yards against Giants (12/12) for touchdown ... also returned 21 punts for 87 yards.

GEORGE TALIAFERRO

Age	Ht.	Wt.	College	*Yr. Eagle	Residence
28	6'	195	Indiana	1st	Baltimore, Md.

Former Colt back signed by Eagles as free agent three weeks before NFL season opened ... top Colt back two years ago with 1,187 yards on total offense ... All-American in 1948 at Indiana ... voted top rookie in old All-American Conference for 1949 while with L.A.

Dons ... with N. Y. Yanks in 1950 and 1951, Dallas in 1952 and Colts 1953 and 1954 ... triple threat back, passes, runs, and punts ... married and father of two children.

*Played with L. A. Dons (1949); N. Y. Yanks (1951-1952); Dallas (1952) and Baltimore (1953-1954).

JAMES PARMER

Age	Ht.	Wt.	College	Yr. Eagle	Residence
28	6'	185	Okla. A & M	8th	Artesia, N. M.

One of few surviving members of championship teams of 1948 and 1949 ... 1954 Big Jim's greatest year ... led team in ground gaining first time with 4088 yards on 119 attempts ... also caught 12 passes for 40 yards ... shifted to halfback this season, his normal position, after seven years of fullbacking ... one of the league's top all-around performers ... married and father of two children.

THEODORE WEGERT

Age	Ht.	Wt.	College	Yr. Eagle	Residence
23	5'11	195	—	1st	Riverhead, L. I.

Dashing Dutchman ... sensation of pre-season schedule ... no college experience but star player while four years in Navy ... scored 63 touchdowns at Bainbridge and Newport ... recommended to Head Coach Jim Trimble by Bainbridge coach ... Wegert's dad also asked Trimble to give Ted trial ... hits hard and fast ... led Eagles in ground gaining during pre-season campaign ... single.



You travel with distinction and comfort when you

Go By YELLOW

TAXICABS • LIMOUSINES • CABULANCE • AIRPORT SERVICE

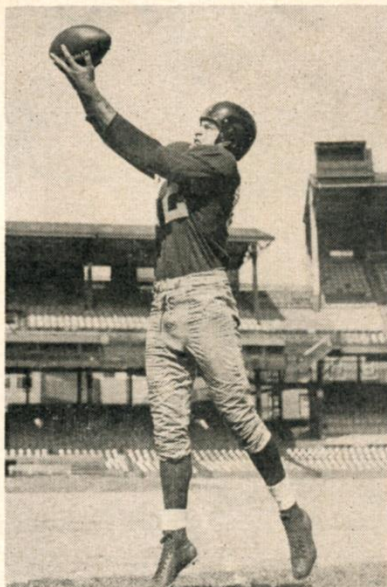
YELLOW CAB COMPANY OF PHILADELPHIA • WALnut 2-8400

YELLOW LIMOUSINE SERVICE, INC. • WALnut 2-8440

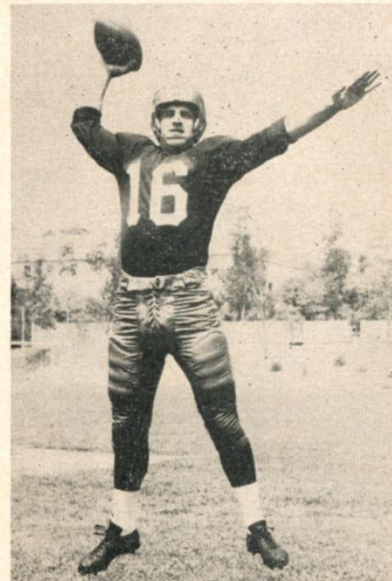
DON'T MISS THESE REDSKINS! HERE OCTOBER 1st



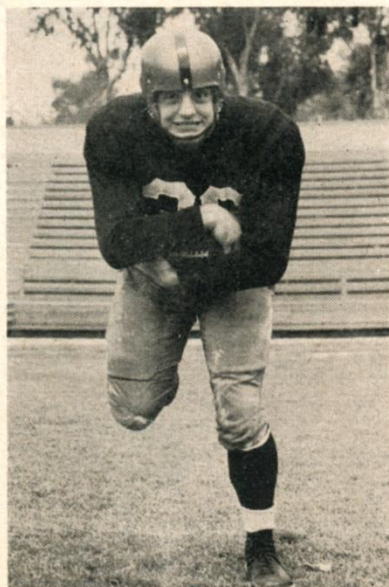
DALE ATKESON, B



JOHN CARSON, E



AL DOROW, B



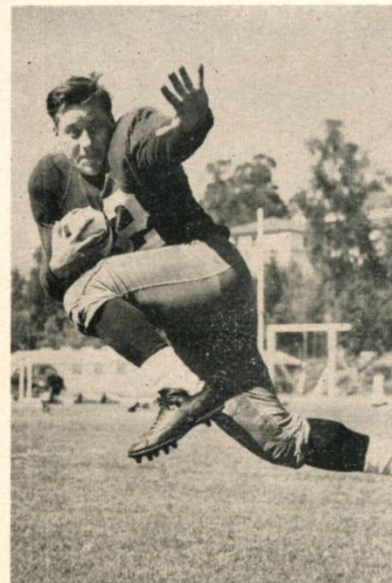
CHECK DRAZENOVICH, B

Need Money? How Much?

You name it — from
\$100 up. Any of our 24
offices will serve
you quickly, courteously.

**The
Pennsylvania
Company**
for Banking and Trusts

Founded 1812
Member - Federal Reserve System
Federal Deposit Insurance Corporation



LEO ELTER, B



ROB GOODE, B



RALPH GUGLIELMI, B



VIC JANOWICZ, B

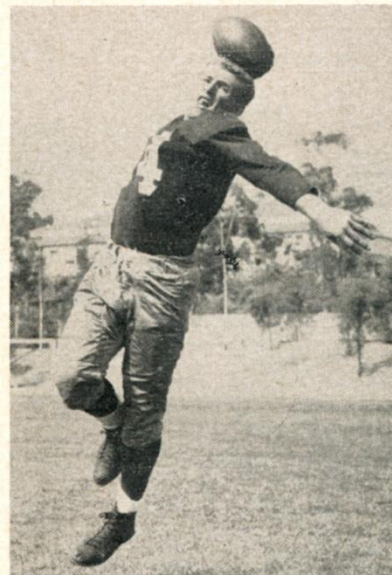
DON'T MISS THESE REDSKINS! HERE OCTOBER 1st



CHARLIE JONES, E



J. D. KIMMEL, T



EDDIE LeBARON, QB



RON MARCINIAK, T

Jim Belcher Buick

Sales Champ says:

"I'm as near as your telephone.
Call me at MAdison 6-0300 or
SHerwood 7-7212. Ask about my
money-saving deals on New
Buicks. They're Unbeatable."

Jim Belcher Buick

33 E. Baltimore Pike
Clifton Heights, Pa.
Madison 6-0300 - Sherwood 7-7212



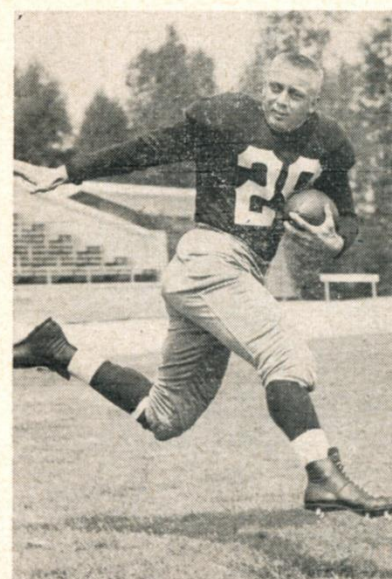
CHET OSTROWSKI, E



JOE SCUDERO, B



HARRY ULINSKI, C



BERT ZAGERS, HB

ALL-TIME INDIVIDUAL PRO RECORDS

MOST ATTEMPTS

1320 Steve Van Buren, Philadelphia, 1944-1951
(eight seasons) (gained 5,860 yards,
averaged 4.4 yards)

MOST ATTEMPTS (one season)

271 Eddie Price, N. Y. Giants, 1951 (gained
971 yards)

MOST ATTEMPTS (one game)

39 Harry Newman, N. Y. Giants vs. Green Bay,
10/11/34 (gained 114 yards)

MOST YARDS GAINED

5,860 Steve Van Buren, Philadelphia, 1944-51
(eight seasons)

MOST YARDS GAINED (one season)

1,146 Steve Van Buren, Philadelphia, 1949

MOST YARDS GAINED (one game)

218 Gene Roberts, N. Y. Giants vs. Chicago
Cardinals, 11/12/50 (26 attempts)

MOST PASSES ATTEMPTED

3,016 Sammy Baugh, Washington, 1937-1952
(sixteen seasons)

MOST PASSES ATTEMPTED (one season)

380 Tobin Rote, Green Bay, 1954 (completed
180)

MOST PASSES ATTEMPTED (one game)

60 Davey O'Brien, Philadelphia vs. Washing-
ton, 12/1/40 (33 completions)

MOST PASSES COMPLETED

1,709 Sammy Baugh, Washington, 1937-1952
(sixteen seasons)

MOST PASSES COMPLETED (one season)

210 Sammy Baugh, Washington, 1947 (at-
tempted 354)

MOST PASSES COMPLETED (one game)

36 Charley Conerly, N. Y. Giants vs. Pitts-
burgh 12/5/48

MOST YARDS GAINED PASSING

22,085 Sammy Baugh, Washington, 1937-1952
(sixteen seasons)

MOST YARDS GAINED PASSING (one season)

2,938 Sammy Baugh, Washington, 1947 (12
games)

MOST YARDS GAINED PASSING (one game)

554 Norman Van Brocklin, Los Angeles vs.
N. Y. Yanks, 9/28/51

MOST TOUCHDOWN PASSES

187 Sammy Baugh, Washington, 1937-1952
(sixteen seasons)

MOST TOUCHDOWN PASSES (one season)

28 Sid Luckman, Chicago Bears, 1943 (10
games)

MOST TOUCHDOWN PASSES (one game)

7 Sid Luckman, Chicago Bears vs. N. Y. Giants,
11/14/43

7 Adrian Burk, Philadelphia vs. Washington,
10/17/54

MOST CONSECUTIVE GAMES THROWING TOUCHDOWN PASSES

23 Cecil Isbell, Green Bay (12 in 1941, 11 in
1942)

BEST PASSING EFFICIENCY (500 or more attempts)

56.7% Sammy Baugh, Washington, 1937-1952
(1,709 completions in 3,016 attempts)

MOST PASSES CAUGHT

489 Don Hutson, Green Bay, 1935-1945 (eleven
seasons)

MOST PASSES CAUGHT (one season)

84 Tom Fears, Los Angeles, 1950

MOST PASSES CAUGHT (one game)

18 Tom Fears, Los Angeles vs. Green Bay,
12/3/50 (189 yards)

MOST TOUCHDOWN PASSES CAUGHT

101 Don Hutson, Green Bay, 1935-1945 (eleven
seasons)

MOST TOUCHDOWN PASSES CAUGHT (one season)

17 Don Hutson, Green Bay, 1942
17 Elroy Hirsch, Los Angeles, 1951

MOST TOUCHDOWN PASSES CAUGHT (one game)

5 Bob Shaw, Chicago Cardinals vs. Baltimore
10/2/50

MOST YARDS GAINED CATCHING PASSES

8,010 Don Hutson, Green Bay, 1935-1945
(eleven seasons)

All-Time Individual Pro Records

Continued

MOST YARDS GAINED CATCHING

PASSES (one season)

1,495 Elroy Hirsch, Los Angeles, 1951

MOST YARDS GAINED CATCHING

PASSES (one game)

303 Jim Benton, Cleveland Rams vs. Detroit, 11/22/45

MOST POINTS SCORED

825 Don Hutson, Green Bay, 1935-1945 (eleven seasons) (105 tds, 174 ex. pts., 7 f. gs.)

MOST POINTS SCORED (one season)

138 Don Hutson, Green Bay, 1942 (17 tds, 33 ex. pts., 1 f. g.)

MOST POINTS SCORED (one game)

40 Ernie Nevers, Chicago Cardinals vs. Chicago Bears, 11/28/29

MOST TOUCHDOWNS SCORED

105 Don Hutson, Green Bay, 1935-1945 (eleven seasons)

MOST TOUCHDOWNS SCORED (one game)

6 Ernie Nevers, Chicago Cardinals vs. Chicago Bears, 11/28/29

6 Bill Jones, Cleveland Browns vs. Chicago Bears, 11/25/51

MOST FIELD GOALS

81 Lou Groza, Cleveland, 1950-1954 (five seasons)

MOST FIELD GOALS (one season)

23 Lou Groza, Cleveland, 1953

MOST FIELD GOALS (one game)

5 Bob Waterfield, Los Angeles vs. Detroit, 12/9/51 (17, 40, 25, 20 and 39 yards)

MOST EXTRA POINTS

315 Bob Waterfield, Los Angeles, 1945-1952 (eight seasons)

MOST EXTRA POINTS (one season)

54 Bob Waterfield, Los Angeles, 1950 (missed four)

MOST EXTRA POINTS (one game)

9 Pat Harder, Chicago Cardinals vs. N. Y. Giants, 10/17/48

9 Bob Waterfield, Los Angeles vs. Baltimore, 10/22/50

MOST PUNTS (one season)

92 Howard Maley, Boston Yanks, 1947

MOST PUNTS (one game)

14 Sammy Baugh, Washington vs. Philadelphia, 11/5/39

14 John Kinscherf, N. Y. Giants vs. Detroit, 11/7/43

14 George Taliaferro, N. Y. Yanks vs. L. A. Rams, 9/28/51

BEST PUNTING AVERAGE (one season)

48.7 yards Sammy Baugh, Washington, 1942 (30 punts)

MOST PUNT RETURNS (one season)

38 Emlen Tunnell, N. Y. Giants, 1953 (Returned 223 yards)

MOST PUNT RETURNS (one game)

7 Bosh Pritchard, Philadelphia vs. Green Bay, 11/29/42 (Returned 81 yards)

MOST KICKOFF RETURNS (one season)

34 Woodley Lewis, Los Angeles, 1954 (836 yds., average 24.6 yds.)

MOST KICKOFF RETURNS (one game)

4 Wally Triplett, Detroit vs. Los Angeles, 10/29/50 (294 yds., average 73.6 yds.)

LONGEST RUNS

LONGEST RUN FROM SCRIMMAGE

97 yards Andy Uram, Green Bay vs. Chicago Cards, 10/8/39 (TD)

97 yards Bob Gage, Pittsburgh vs. Chicago Bears, 12/4/49 (TD)

LONGEST RETURN OF KICKOFF

105 yards Frank Seno, Chi. Cards vs. N. Y. Giants, 10/20/46 (TD)

LONGEST PUNT RETURN

98 yards Gil Le Febvre, Cincinnati vs. Brooklyn, 12/3/33 (TD)

LONGEST RETURN WITH INTERCEPTION

102 yards Robert Smith, Detroit vs. Chicago Bears, 11/24/49 (TD)

LONGEST RETURN WITH MISSED FIELD GOAL

99 yards Jerry Williams, Los Angeles vs. Green Bay, 12/16/51 (TD)

LONGEST RETURN WITH FUMBLE

98 yards George Halas, Chicago Bears vs. Thorpe's Indians, 11/4/23 (TD)

LONGEST RUN WITH INTERCEPTED LATERAL

93 yards Dick Poillon, Washington vs. Phila., 11/21/48 (TD)

STEELERS IN ACTION! HERE OCTOBER 30th



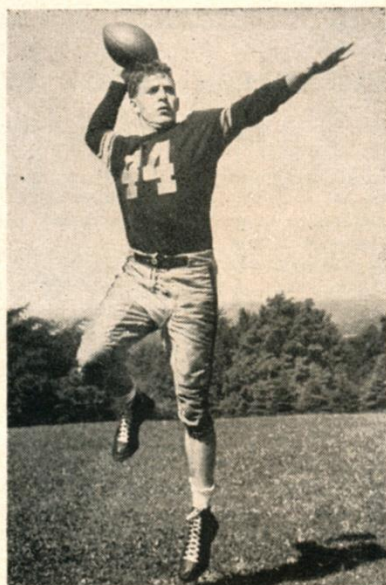
JIM BRANDT, HB



FRED BROUSSARD, C



DALE DODRILL, G



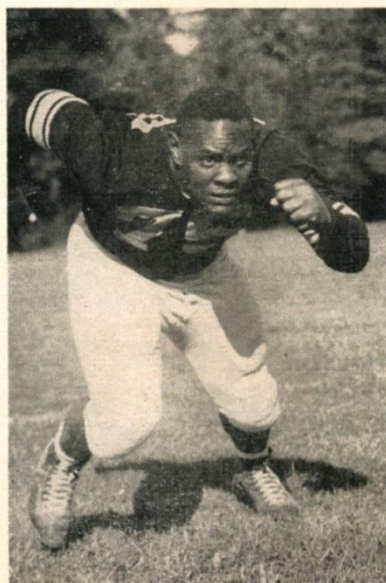
JIMMY FINKS, QB

Exide
BATTERIES
for
EVERY
BATTERY
PURPOSE

THE ELECTRIC STORAGE BATTERY CO.
 P.O. Box 8109 Phila. 1, Pa.



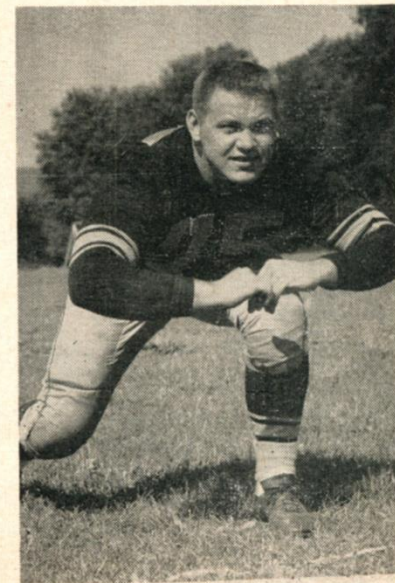
RAY MATHEWS, HB



WILLIE McCLUNG, G



BILL McPEAK, E



DICK MODZELEWSKI, G

STEELERS IN ACTION! HERE OCTOBER 30th



MARION MOTLEY, FB



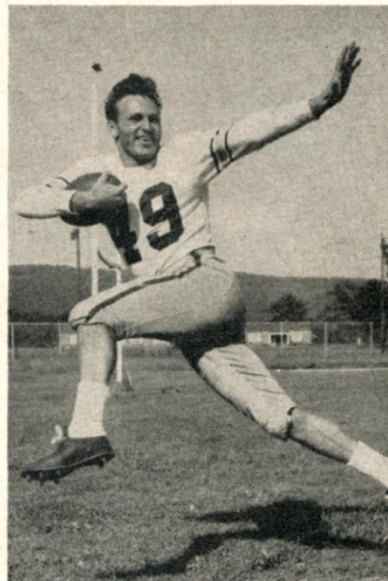
ELBIE NICKEL, E



FRAN ROGEL, FB



ERNIE STAUTNER, T



LYNN CHANDNOIS, HB



JOHN SCHWEDER, G



LOU FERRY, T

BIG-SCREEN COLOR TV IS HERE!

Mort Farr, leading TV and appliance dealer at 69th Street below Chestnut, announces immediate delivery and installation is now available on beautiful new 21-inch color television sets by RCA-Victor. Farr, a Brand Name Retailer-Of-The-Year winner and one of the first dealers to introduce black-and-white television in this area, is now one of the first to sell and service color TV.

These new full-size TV sets have far more viewing area than older small-screen color sets. Pictures are steady and brilliant; won't blur or fade. And these are compatible sets, receiving standard black-and-white telecasts sharp and clear as well as color.

Mort Farr maintains a complete service center with specialized equipment and an experienced factory-trained staff to assure expert installation and maintenance of color TV at all times.

Color television is expected to make rapid strides this fall with the advent of large-screen color and a widely-expanded scheduling of color programs, five times greater than last year. On September 17 the first color telecast of a college football game was carried on a national network; the game between Georgia Tech. and U. of Miami. A number of important sports events will be telecast in color with at least five college football games including the Army and Navy and Rose Bowl games, and the World Series. In addition, over 78 color shows are scheduled with three spectaculars a month. It is estimated that 350,000 color sets will be purchased during 1956.

Just as was the case with black and white TV, the first big-screen color TV sets are being installed by Mort Farr in taverns and clubs; an added attraction for their customers that results in more sales, and more repeat business.

OFFICIAL FOOTBALL SIGNALS



Offside or Free Kick Violation
Hands on hips
ENCROACHMENT—Same signal followed by placing one hand on top of cap.



Crawling, Pushing or Helping Runner
Pushing movement of hands to front with arms downward.



Unsportsmanlike Conduct
Arms outstretched, palms down.
(Same signal means continuing action fouls are disregarded.)



Penalty Refused, Incomplete Pass, Play Over, or Missed Goal
Sifting of hands in horizontal plane.



Safety
Palms together over head.



Illegal Motion At Snap
Horizontal arms with either hand.



First Down
Arm raised, then pointed toward defensive team's goal.



Holding
Grasping of one wrist.
Illegal Use of Hands or Arms
Holding Signal followed by Interference Signal.



Touchdown, Field Goal or Successful Try
Both arms extended above head.



Dead Ball or Neutral Zone Established
One arm aloft, open hand (With fist closed—Fourth Down)



Delay of Game or Excess Time-Out
Folded Arms.
Illegal Formation—Same signal followed by over and over rotation of forearms in front of body.



No Time-Out or Time-In with Whistle
Full arm circles to simulate winding clock.

ROSTER OF OFFICIALS — 1955 EAST AND MID-WEST OFFICIALS

No.	Name	College or University
44	Austin, Robert	St. Ambrose
17	Beiersdorfer, James	None
31	Berry, Charles	Lafayette
39	Castree, Gilbert	Virginia
57	Connell, Joseph	Pittsburgh
45	Cooperman, Samuel	Muhlenberg
50	Crowe, James	Indiana
11	Crowley, Joseph	Muhlenberg
4	Dowd, Thomas	Holy Cross
3	Downes, William	Illinois Tech.
10	Giangreco, Samuel	Manhattan
5	Gibbs, Ronald	St. Thomas
7	Glascott, John	Pennsylvania
27	Grimberg, William	Villanova
49	Hamer, James	California St. Tehrs.
48	Highberger, John	Carnegie Tech.
29	Jaworowski, Stanley	Georgetown
38	Kane, James	Loyola (Md.)
33	Knight, Warren	Carnegie Tech.
16	Lisetski, Michael	Muhlenberg
23	McHugh, William	De Paul
52	Mettler, Victor	Notre Dame
55	Pace, John	Illinois
51	Palazzi, Louis	Penn State
37	Pecoraro, Samuel	Dallas
22	Sweeney, Charles	Notre Dame
36	Tehan, Daniel	Xavier (Ohio)
35	Timlin, Thomas	Niagara
25	Tracy, John	Xavier (Ohio)
34	Wallace, Yans	None
53	Wiesenbaugh, Henry	Pittsburgh
19	Wilson, Samuel M.	Lehigh

WEST COAST OFFICIALS

No.	Name	College or University
6	Bowen, Rawson	U. C. L. A.
44	Brown, Raymond Tay	U. S. C.
23	Brubaker, Harry	Loyola (L. A.)
42	Duncan, Norman	U. C. L. A.
12	Gardner, Cletus	Villanova
54	Gonzales, Joseph	U. S. C.
9	Heintz, Emil	Pennsylvania
58	Hutchison, Elvin	U. S. C.
56	Schachter, Norman	Alfred
24	Terremere, Albert	Santa Clara
40	Underhill, James	St. Mary's (Calif.)



Illegal Forward Pass
Waving hands behind back.
Intentional Grounding of Pass—Same as above followed by raised hand flung downward.



Interference with Fair Catch or Forward Pass
Pushing hands forward from shoulder with hands vertical.



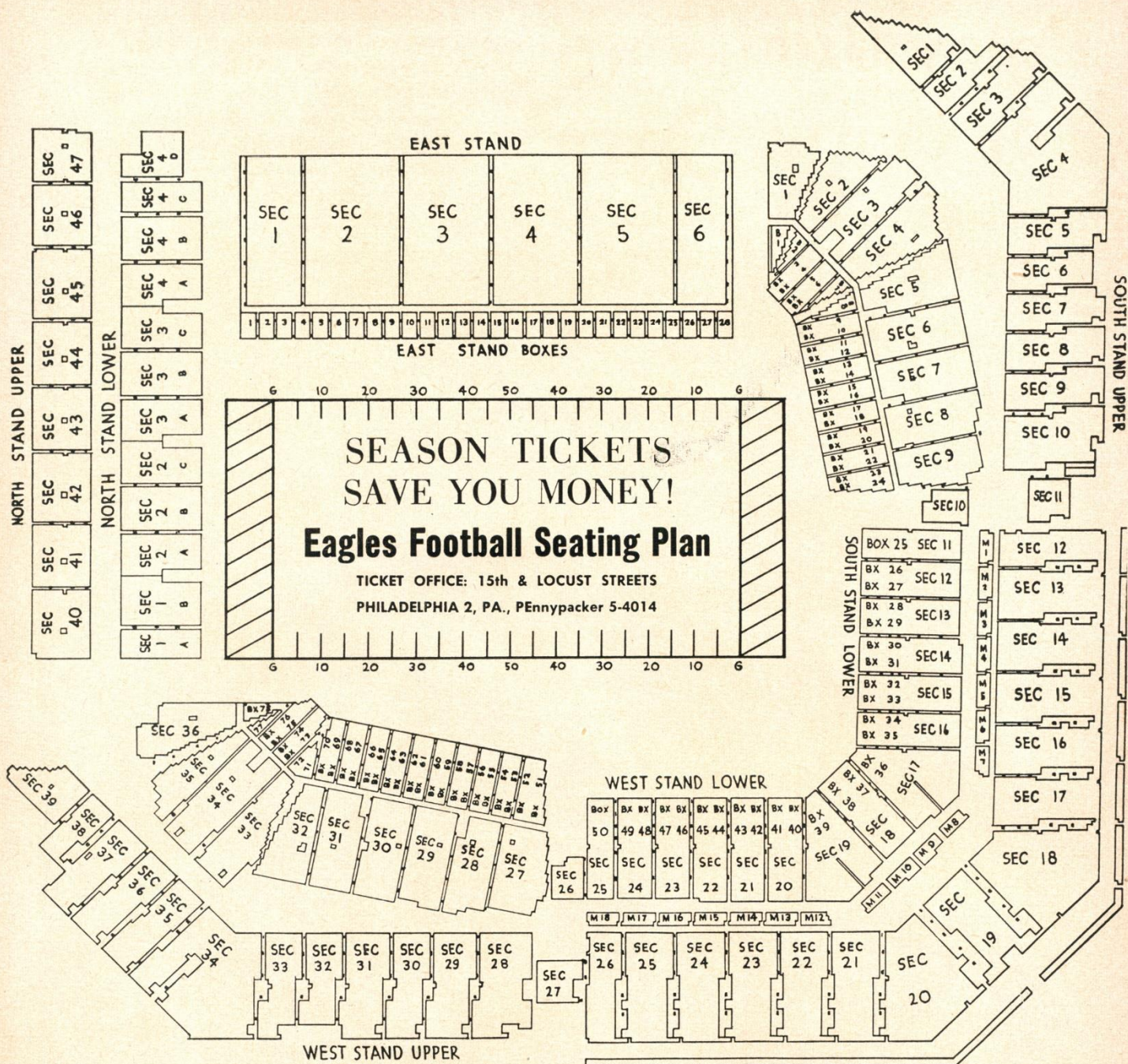
Loss of Down
(Follows signal for foul)
Tapping both shoulders with finger tips.



Personal Foul
Striking one wrist above head
Clipping—Salute followed by striking back of knee with hand.
Running into or Roughing the Kicker—Salute followed by swinging leg.
Running into passer—Salute followed by raised arm swung forward.
Tripping—Salute followed by hooking foot behind opposite ankle.



Time-Out
Hands criss-crossed over head.
Touchback
Time-Out Signal followed by arm swung at side.



OFFICIALS FOR TONIGHT'S GAME

Referee: Thomas Timlin, Niagara
 Umpire: Joseph Crowley, Muhlenberg
 Head Linesman: Warren Knight,
 Carnegie Tech.
 Back Judge: Samuel Giangreco, Manhattan
 Field Judge: James Kane, Loyola, Md.

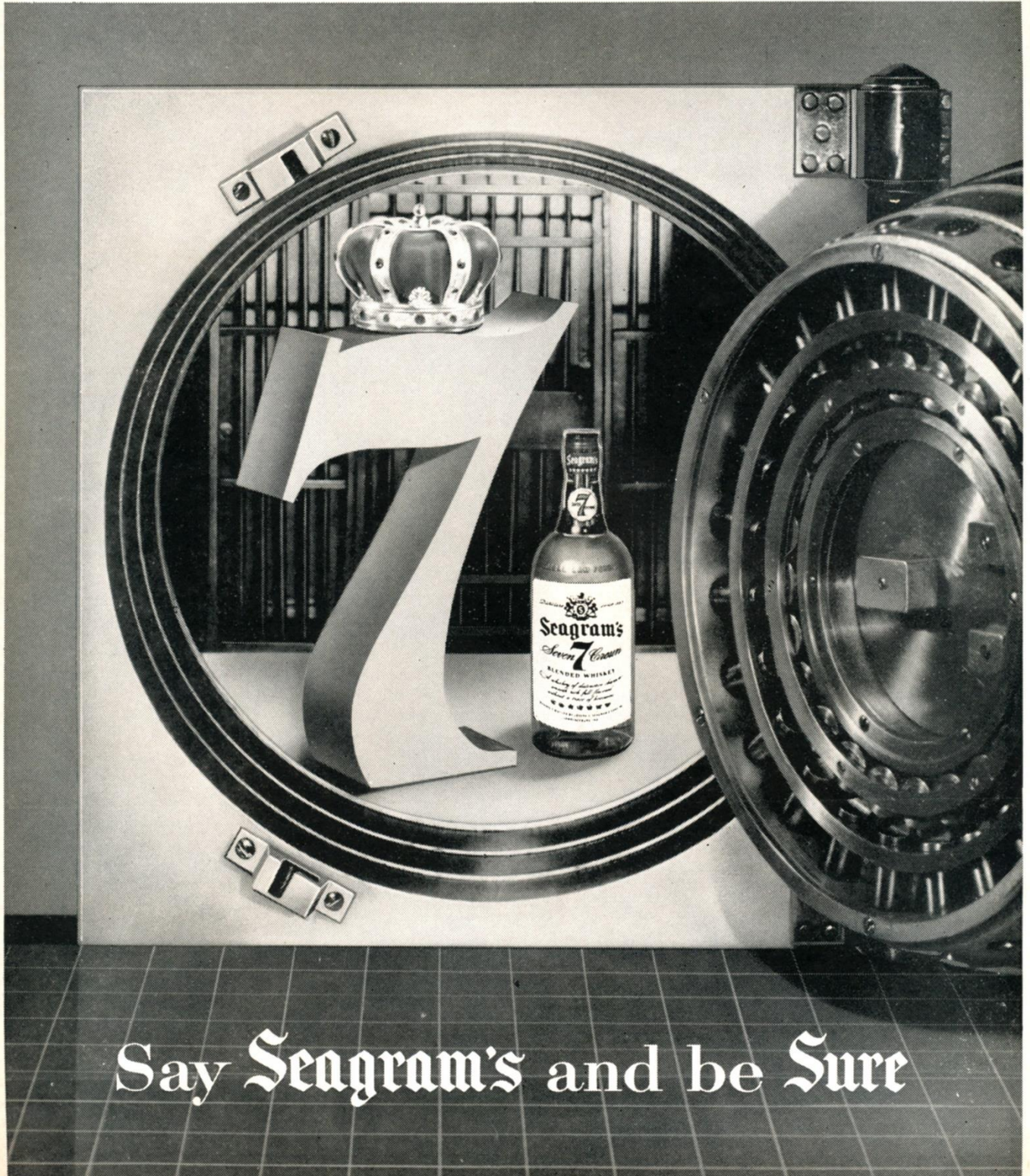
BUY GROUP TICKETS

Attend the Eagles' home games in groups.
 Contact Ed Doyle or Jim Gallagher in the
 Eagles' ticket office for information. Tele-
 phone, Pennypacker 5-4014.

Enjoy the security of being **Sure**

.....

Security is the dream of millions. When this quality is discovered in a product, that product becomes the choice of millions. Among whiskies it is obvious that Seagram's 7 Crown enjoys this honor. For year after year more millions have found they can be sure of the same matchless flavor in every drop... every bottle of Seagram's 7 Crown.



Say Seagram's and be **Sure**

SEAGRAM-DISTILLERS COMPANY, NEW YORK CITY. BLENDED WHISKEY. 86.8 PROOF. 65% GRAIN NEUTRAL SPIRITS.



100 YEARS IN AMERICA



*...and still the
National Champion of Quality*

The excitement of seeing a bird explode out of the underbrush... the thrill of watching a well-executed retrieve... these things never change for the true hunting enthusiast.

Unchanging, too, for 100 years, is the deep-down goodness and matchless quality of MILLER HIGH LIFE, the favorite beer of so many sportsmen throughout America. For the final, fitting touch to *your* day of hunting... and on *all* refreshment occasions, *enjoy life with Miller High Life!*



BREWED ONLY IN MILWAUKEE BY THE
MILLER BREWING COMPANY FOR 100 YEARS



Miller
HIGH LIFE

© Miller Brewing Company
Milwaukee, Wisconsin

