



EAGLES

NOVEMBER 20, 1955

POLO GROUNDS



*Light up a Lucky—
it's light-up time!*

LUCKIES TASTE BETTER

Cleaner, Fresher, Smoother!



*"IT'S
TOASTED"
to taste
better!*

Elegant end to a perfect day!

Schenley RESERVE

The subtle difference that you note in Schenley Reserve is its truly elegant taste. Enjoy it tonight.



BLENDED WHISKEY, 86 PROOF. 65% GRAIN NEUTRAL SPIRITS. SCHENLEY DISTILLERS CO., N. Y. C.



100 YEARS IN AMERICA



...and still the
National Champion of Quality

The excitement of seeing a bird explode out of the underbrush... the thrill of watching a well-executed retrieve... these things never change for the true hunting enthusiast.

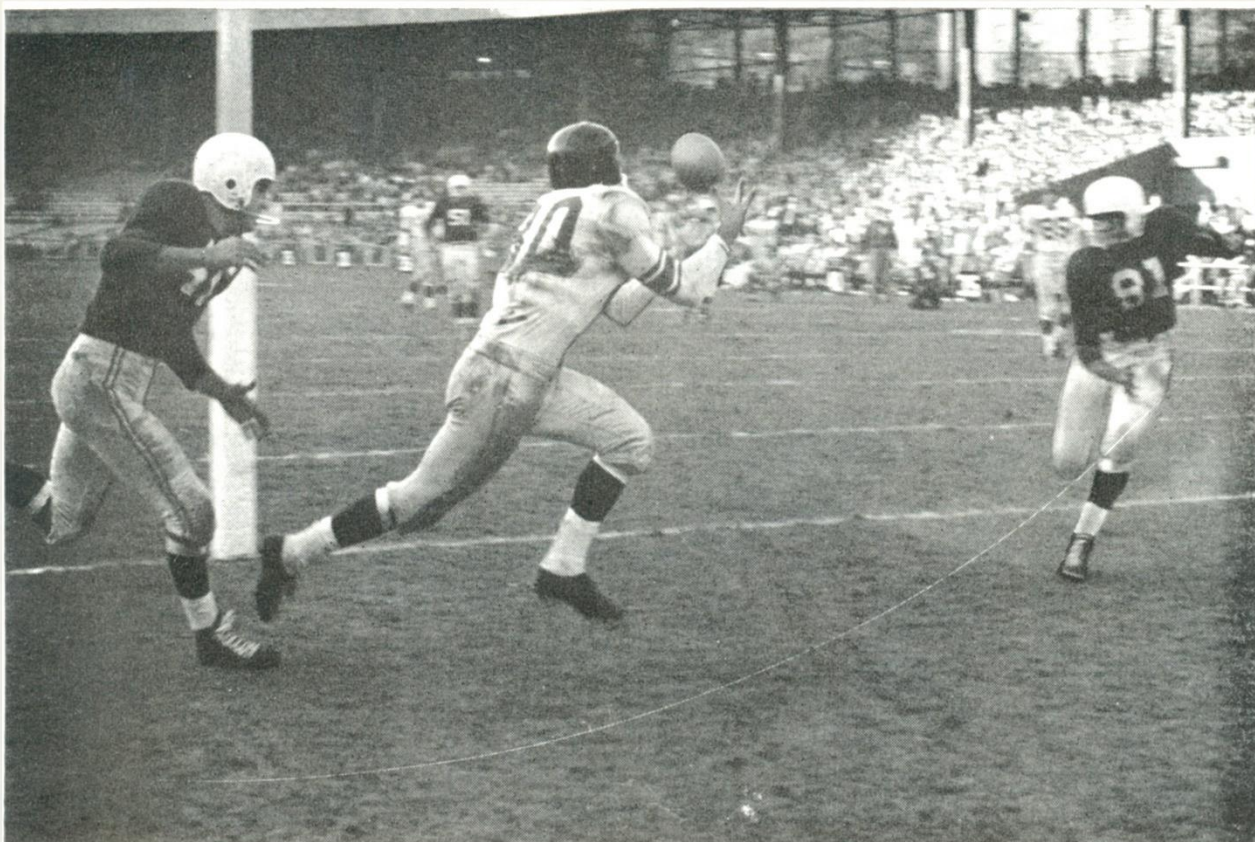
Unchanging, too, for 100 years, is the deep-down goodness and matchless quality of MILLER HIGH LIFE, the favorite beer of so many sportsmen throughout America. For the final, fitting touch to *your* day of hunting... and on *all* refreshment occasions, *enjoy life with Miller High Life!*



BREWED ONLY IN MILWAUKEE BY THE
MILLER BREWING COMPANY FOR 100 YEARS



© Miller Brewing Company
Milwaukee, Wisconsin



☆ STAR ☆
PERFORMERS ☆

Here's the action you see at the pro games! Ken MacAfee of the Giants is catching a Chuck Conerly pass for a touchdown against the Chicago Cardinals.

Prest-o-lite hi-level Battery



**needs water only
3 times a year**
IN NORMAL CAR USE

LASTS LONGER, TOO!

Prest-O-Lite Battery Company, Inc., Toledo 1, Ohio

CAMEL

FOR MORE PURE PLEASURE!



*So Mild—
yet so
rich-tasting!*



Giants "Put It All Together"

Against Colts in Top 1955 Effort

JIM LEE HOWELL and his Giant coaching staff had reason to feel proud with the play of their charges against the Baltimore Colts last Sunday. It was one of the best balanced performances turned in by a Giant squad in recent years.

Against a rival that was tied for second place in the NFL's Western Conference, the New Yorkers had an edge in first downs, 19 to 18; an edge in yards gained from scrimmage, 334 to 306, and most, importantly, an edge in the final score, 17-7.

These points stand out:

1. After the first period, in which they had trouble getting unwound, the Giants maintained ball-control, making one sustained march after another. Particularly striking was their nifty execution of the "belly series" sweep, in which Charley Conerly plunks the ball into the fullback's middle, rides with him toward the line, then takes back the pigskin and flips it to a circling halfback.

Baltimore, which has one of the strongest defensive lines in the league, was repeatedly baffled by this play and Polo Grounds fans had a chance to appreciate the rare running talents of Frank Gifford and Alex Webster, who took the pitchouts from Conerly

ATTENTION FANS!

For the comfort and convenience of those attending Giant home games, it is requested that all ticket-holders take their seats by way of the entrance ramps leading to their own sections.

These entrance ramps are clearly marked. Using them will take you to your seat by the most direct route and with a minimum of confusion.

Give yourself—and the other fellow—a break and avoid walking in front of other sections while going to your seat.

PLEASE COOPERATE!

after the fake to the fullback. Webster, by the way, gained 63 yards in 13 rushes, 23 more than Baltimore's vaunted Alan Ameche picked up in the same number of attempts.

2. Having established respect for his running game, Conerly was able to do some of his most effective passing of the season. He hit Kyle Rote, Gifford and Ken McAfee with some beauties.

The patterns these fleet receivers ran from various flanking positions tied the Colts' secondary into knots.

3. The Giant defense, a weak spot during the first half of the campaign, continued its steady improvement. Ameche never got to see more than a glimpse of daylight and the mercurial L. G. Dupre was kept bottled up, too, after breaking loose for one long run in the first quarter. As long as it mattered, the Giant secondary defense had Baltimore's pass receivers completely under control.

Still a bit thin up front, the Giants did a clever job of supporting their frontier by varying deployments of line-backers. Harland Svare, playing off or on the line on the right side, did a whale of a job. Pat Knight and Bill Svoboda made tackles all over the field, too.

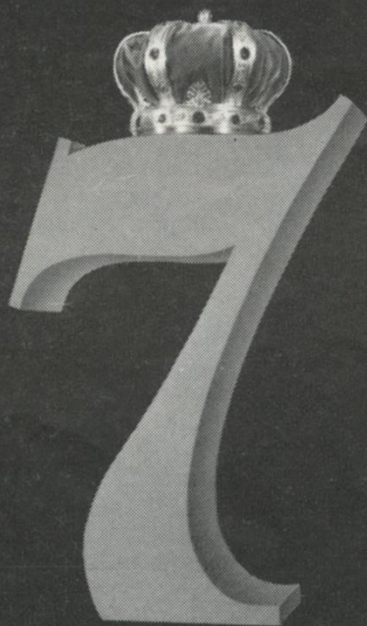
All in all, it was a glowing team effort by the Giants. Vince Lombardi, backfield coach; Ed Kolman, line coach; Ken Kavanaugh, end coach; Tom Landry, defensive coach, and commander-in-chief Howell all can take deep bows along with the players who carried out their instructions.

The progress the Giants showed in "putting it all together" promises more exciting action here.



GIANT COACHING STAFF: Ed Kolman, Ken Kavanaugh, Jim Lee Howell, Tom Landry, Vin Lombardi.

This book is published by HARRY M. STEVENS, Inc., 320 Fifth Avenue, New York 1, N. Y.



THE SYMBOL OF
American Whiskey
AT ITS FINEST

The Standard

by which the Finest
American Whiskey
is judged

No other whiskey in history has satisfied so many millions... in so many diverse walks of life... in so many parts of America. It is this unprecedented popularity of Seagram's 7 Crown that has made it the standard by which the finest American whiskey is judged.

Say **Seagram's**
and be **Sure**

“They Shall Not Pass”— That’s Tunnell’s Motto

IN view of the Eagles’ aerial prowess, the Giants feel that victory today will depend largely on their defense.

One Giant who is not awed by the task is Em Tunnell, All-Pro safety man, holder of NFL all-time record for pass interceptions and the only Giant who has played in every Pro-Bowl game.

Defense, to Tunnell, has become a habit. This is his eighth season with the New Yorkers, making him the dean of the Giants. Yet Tunnell has not played as much as a moment on offense since his rookie season. Frequently, though, Em has been the Giants’ leading ground-gainer.

In 1953, for instance, Tunnell returned 38 punts for 223 yards, 17 kickoffs for 479 yards and six interceptions for 117 yards. This total of 819 yards was surpassed by no one on the Giants and by only two offensive backs in the whole league. In 1952, Em gained 924 yards on “defense,” which topped ball-carrying champion Dan Towler’s scrimmage production by 30 yards.

Tunnell is proudest of the fact that he holds the NFL career pass interception record. At last count he had latched onto 59 enemy aerials. Em is a step slower now than when he thrilled the fans game after game with spectacular runbacks but this has not cut down



his game-saving interceptions. He has five so far in '55.

The Iowa graduate holds one other NFL record, most punts returned in a season, 38. He set this mark in 1953. It is quite a testimonial to Em’s durability. A dozen times or more he was smashed down in his tracks but he always came back for more. He has played in 87 consecutive games since 1948, a mark topped only by big, rugged linemen. Pro play is rough on slender backs like Tunnell.

In 1951, Em made four touchdowns, tying a NFL runback mark, including a 100-yard run with a

kickoff and an 83-yard run with a punt.

Tunnell’s secret, he explains, is this: “When I’m catching a punt or kickoff, I can see the tacklers closest to me out of the corner of my eye. I always figure I have them beat, so I only worry about the other tacklers who aren’t close to me. It’s easy to fake a man who’s right on top of you. The far away ones are harder.”

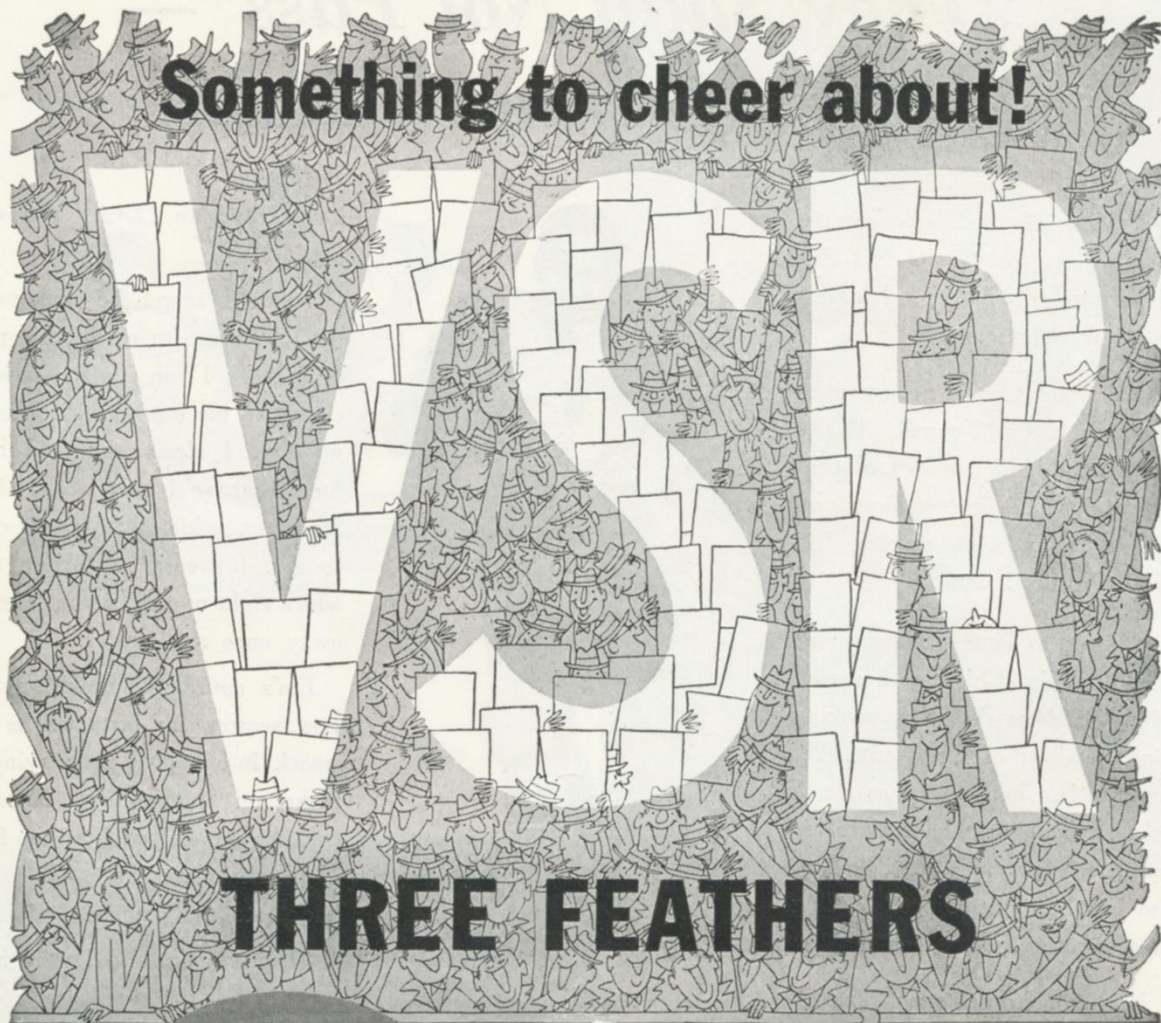
Em’s courage is unquestioned. Last season, for instance, he ran smack into a goal post trying to make an interception. Knocked cold, he was helped from the field. A moment later he was running back into the game.

“The trainers and I were holding him on the sidelines,” recalls Dr. Francis Sweeny, the Giants’ physician. “But Em broke away from us and ran back onto the field.”

Dr. Sweeny, who has seen the great ones come and go during his twenty-five years with the Giants, lists Tunnell among the five gamest players he has known. Most injured players are anxious to be treated by the doctor. Not Tunnell.

“He’s the hardest man on the team to send to the hospital after the game when he’s hurt,” says Dr. Sweeny. “If you turn your back on him, he’s gone, and you won’t see him again until Tuesday at practice.”

PLEASE USE ENTRANCE RAMP NEAREST YOUR SEAT



GIANT LEADERS

Rushing
Webster..... 81 for 428 yds.

Passing
Conerly..... 68 of 144 for 932 yds.

Pass-Receiver
Rote..... 22 for 456 yds.

Scoring
Agajanian..... 35 pts.

Punting
Landry..... 40.9-yd. avg.

Interceptions
Tunnell..... 5 for 51 yds.

Very Special Reserve

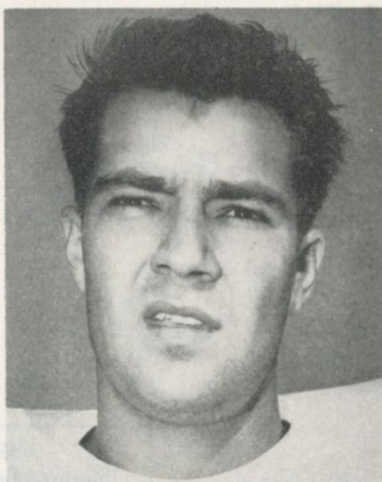
You'll know it's very special when you see the "Oval" label and taste the Very Special Reserves of whiskey that give it its name.

Ask for VSR the Very Smooth Reliable whiskey in the "OVAL" bottle.



BLENDED WHISKEY • 86.8 PROOF • 65% GRAIN NEUTRAL SPIRITS • THREE FEATHERS DISTILLING CO., ALADDIN, PA.

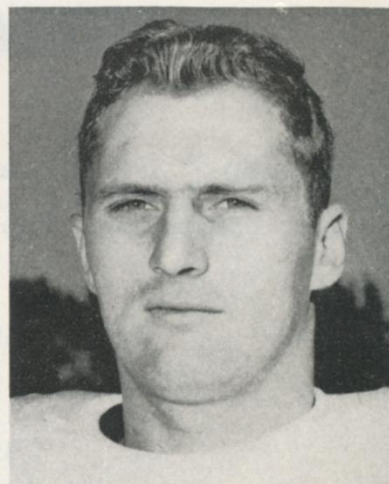
Meet the Giants



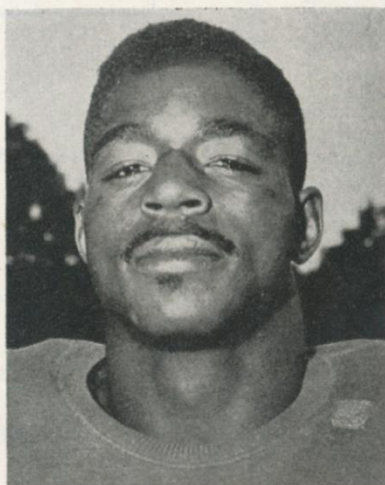
Don Heinrich

Don Heinrich (11) is gradually working into the Giant quarterback picture. It's comforting to Coach Jim Lee Howell to know he has such a capable replacement for Charley Conerly. Don runs the team decisively, handles the ball deftly and is a pinpoint passer, particularly on quickies over the line. At Washington, where he set a flock of NCAA passing records in 1950-1952, they called Heinrich the Bremerton Bazooka. It's easy to see why.

Ken McAfee (80), one of last year's rookie finds, got into action a couple of games ago after spending the first half of the season on the disabled list. The fleet Alabamian supplies one of the Giants' chief needs—that of a "long end," who can go for distance on pass receptions. He grabbed 24 passes for 438 yards and 8 touchdowns in 1954. Now that he's getting his strength back, you'll hear from him again.



Ken McAfee



Rosie Brown

Roosevelt Brown (76), playing his third season as the Giants' regular offensive right tackle, might be described as a long-shot who paid off. He was the No. 27 choice of the Giants in the 1953 college draft. From the time he showed up in camp, the Giants have been thanking their lucky stars they got away with naming him so late. Big, strong, durable and fast, he's one of the best blockers in the league. Morgan State was Rosy's college.

George Kennard (67), from Kansas, is a four-year Giant. Serviceable at both guards on offense, he has been a starter more often than not. As pro guards go, George is not a big man, weighing only 215 pounds. But he blocks "big," in the line and downfield, and has the speed to get out ahead on wide plays and stay there. The Giants signed him as a free agent. It was a move they don't regret.



George Kennard



Jack Stroud

Jack Stroud (66), the strong, silent man of the Giants' offensive line, has been a Polo Grounds fixture for three seasons. He usually starts at right guard. The handsome Tennessee graduate is a devastating blocker. Look at any picture of a Giant running play and the chances are you'll see No. 66 with his shoulder rammed into the middle of some opponent in front of the ball-carrier. Jack weighs only 215 but he makes every pound count.

Pat Knight (34) is loosely classified as an end. Actually he's likely to play almost anywhere along or in back of the defensive line. Wherever he is, the opposition will be conscious of the 210-pound Texan. He loves to crash and break up plays before they get a chance to develop. A Giant for three years, with one year out for injuries, Pat was Kyle Rote's blocker in their bright college days at SMU.



Pat Knight

AUTOGRAPH COLLECTORS: "Meet the Giants" will be a weekly program feature.

PLEASE USE ENTRANCE RAMP NEAREST YOUR SEAT

PHILADELPHIA EAGLES

KICK-
2:05

OFFENSE

R. H. Wegert (46) F. B. Bielski (36) Q. B. Burk (10) L. H. Giancanelli (27)
R. E. Pihos (35) R. T. Snyder (73) R. G. Carroccio (64) C. Kelley (50) L. G. Huxhold (63) L. T. Weatherall (77) L. E. Walston (83)

DEFENSE

L. E. Scott (82) L. T. Richardson (72) M. G. Ricca (71) R. T. Jarmoluk (78) R. E. Willey (86)
L. H. Bell (81) L. L. B. Robinson (52) L. SAFETY Hudson (42) R. SAFETY Bawel (20) R. L. B. Bednarik (60) R. H. Dowda (44)

Eagle Roster

No.	Player	Position	Weight	Height	College	Yrs. Pro
10	Burk, Adrian	B	200	6:02	Baylor	6
11	Thomason, Bobby	B	200	6:01	V. M. I.	6
20	Bawel, Bibbles	B	185	6:01	Evansville (Ind.)	2
22	Goldston, Ralph	B	195	5:11	Youngstown	4
27	Giancanelli, Harold	B	179	5:10	Loyola (L. A.)	3
35	Pihos, Pete	E	207	6:01	Indiana	9
36	Bielski, Dick	B	215	6:01	Maryland	1
38	Goode, Rob	B	230	6:04	Texas A. and M.	5
41	Norton, Jerry	B	200	5:11	S. M. U.	2
42	Hudson, Bob	B	220	6:04	Clemson	5
43	Parmer, Jim	B	195	6:00	Oklahoma A. and M.	8
44	Dowda, Harry	B	205	6:02	Wake Forest	7
46	Wegert, Ted	B	195	5:11	No College	1
50	Kelley, Bob	L	225	6:02	West Texas State	1
52	Robinson, Wayne	L-B	220	6:02	Minnesota	4
60	Bednarik, Chuck	L-B	230	6:03	Pennsylvania	7
63	Huxhold, Ken	L	215	6:01	Wisconsin	2
64	Carroccio, Russell	L	235	6:00	Virginia	2
71	Ricca, Jim	L	270	6:04	Georgetown	5
72	Richardson, Jess	L	235	6:02	Alabama	3
73	Snyder, Lum	L	230	6:05	Georgia Tech	4
74	Higgins, Tom	L	230	6:02	North Carolina	3
75	Wydo, Frank	L	235	6:04	Duquesne-Cornell	9
77	Weatherall, Jim	L	235	6:04	Oklahoma	1
78	Jarmoluk, Mike	L	250	6:05	Temple	10
79	Lansford, Buck	L	230	6:02	Texas	1
80	Stribling, Bill	E	205	6:01	Mississippi	4
81	Bell, Eddie	E-B	208	6:01	Pennsylvania	1
82	Scott, Tom	E	222	6:02	Virginia	3
83	Walston, Bobby	E-B	190	6:00	Georgia	5
86	Willey, Norman	E	231	6:03	Marshall	6

GIANT SPE
Punting—Landry (49),
PAT and FG—Agajanian
Rote (44).
Kick-Offs—Agajanian (44).
Rote (44).

OFFICIALS

Referee
John Glascott (7)

Umpire
Samuel Wilson

Head Line Judge
Charles Berry (1)

Back Judge
Victor Mettler (5)

Field Judge
Michael Lisetski (1)

EAGLE SPE

Punting—Burk (10),
(36).
PAT and FG—Walston
Kick-Offs—Bielski (36)

EAGLE STAFF: Jim Trimble, Indiana, head coach; Charles Drulis, Temple, line coach; Charles Gauer, Colgate, end coach; Abe Stuber, Missouri, backfield coach; Steve Van Buren, personnel director; Frank Wiechec, trainer; Dr. Thomas Dowd, physician; Dr. Francis Loftus, dentist; Fred Schubach, equipment manager.

The Official Watch for Timing Today's Game Is

PLEASE USE ENTRANCE RA

SMOOTHER GOING DOWN



CK-OFF
5 P.M.

NEW YORK GIANTS

OFFENSE

R. H. Webster (29)	F. B. Epps (35)	L. H. Gifford (16)	Q. B. Heinrich (11)
R. E. Rote (44)	R. T. Yelvington (72)	R. G. Stroud (66)	C. Wietecha (55)
L. G. Austin (60)	L. T. Brown (79)	L. E. Schnelker (85)	

DEFENSE

L. E. Yowarsky (78)	L. T. Krouse (70)	M. G. Beck (61)	R. T. Boggan (73)	R. E. Grier (76)
L. H. Landry (49)	L. SAFETY Tunnell (45)	L. L. B. Svoboda (30)	R. L. B. Knight (34)	R. SAFETY Rich (27)
R. H. Nolan (25)				

SPECIALISTS

(49), Conerly (42).
Agajanian (8), Gifford (16),
an (8), Gifford (16),

OFFICIALS

Referee
t (7), Pennsylvania

Umpire
lson (19), Lehigh

Linesman
ry (31), Lafayette

Back Judge
er (52), Notre Dame

Field Judge
ski (16), Muhlenburg

SPECIALISTS

(0), Norton (41), Bielski
lston (83), Bielski (36).
(36), Bednarik (60).

Giant Roster

No.	Player	Position	Weight	Height	Age	College	Yrs. Pro
8	Agajanian, Ben	E	215	6:00	36	New Mexico	6
11	Heinrich, Don	QB	180	6:00	24	Washington	2
12	Clatterbuck, Bob	QB	190	6:03	23	Houston	2
16	Gifford, Frank	HB	205	6:01	25	USC	4
20	Patton, Jim	HB	175	5:10	23	Mississippi	1
25	Nolan, Dick	HB	185	6:01	23	Maryland	2
27	Rich, Herb	HB	185	5:11	27	Vanderbilt	6
28	Weaver, Larrye	HB	190	5:11	23	Fullerton J. C.	1
29	Webster, Alex	HB	210	6:03	24	North Carolina St.	1
30	Svoboda, Bill	FB	215	6:00	27	Tulane	6
33	Triplett, Mel	FB	218	6:01	23	Toledo	1
34	Knight, Pat	E	210	6:02	26	SMU	3
35	Epps, Bobby	FB	195	5:08	23	Pittsburgh	2
42	Conerly, Charley	QB	185	6:01	31	Mississippi	8
44	Rote, Kyle	HB	205	6:00	27	SMU	5
45	Tunnell, Emlen	HB	195	6:01	30	Iowa	8
48	Heap, Joe	HB	185	5:11	23	Notre Dame	1
49	Landry, Tom	HB	195	6:01	30	Texas	7
55	Wietecha, Ray	C	225	6:01	26	Northwestern	3
60	Austin, Bill	G	225	6:01	26	Oregon State	5
61	Beck, Ray	G	225	6:02	23	Georgia Tech	2
62	West, Stan	G	235	6:02	28	Oklahoma	6
66	Stroud, Jack	G	215	6:01	26	Tennessee	3
67	Kennard, George	G	220	6:00	26	Kansas	4
70	Krouse, Ray	T	260	6:03	28	Maryland	5
72	Yelvington, Dick	T	230	6:02	28	Georgia	4
73	Boggan, Rex	T	245	6:04	25	Mississippi	1
76	Grier, Roosevelt	T	261	6:05	22	Penn State	1
78	Yowarsky, Walt	E	235	6:02	27	Kentucky	4
79	Brown, Roosevelt	T	245	6:03	23	Morgan State	3
80	MacAfee, Ken	E	215	6:02	26	Alabama	2
84	Svare, Harland	C	215	6:00	24	Washington State	3
85	Schnelker, Bob	E	215	6:04	25	Bowling Green	3

e is Longines—"The World's Most Honored Watch"

RAMP NEAREST YOUR SEAT

GIANT STAFF: Jim Lee Howell, Arkansas, head coach; Vince Lombardi, Fordham, backfield coach; Ed Kolman, Temple, line coach; Ken Kavanaugh, L. S. U., end coach; Tom Landry, Texas, defensive coach; John Johnson and Sid Moret, trainers; Dr. Francis Sweeny, physician; Dr. Arthur G. Croker, dentist; Joseph Pugni, equipment manager.

BLENDED WHISKEY - 86.8 PROOF - 65% GRAIN NEUTRAL SPIRITS. CALVERT DISTILLERS CO., N.Y.C.

Calvert

SATISFIES





The Gentle Touch

A GENTLE act, a gentle help, a gentle thing, can say so much. That's why gentleness is what modern taste demands in cigarettes. And that's why today's Philip Morris — born gentle, refined to special gentleness in the

making — finds so many of its friends among our young smokers. Enjoy the gentle pleasure, the fresh unfiltered flavor, of today's Philip Morris.

In the convenient snap-open pack, regular or smart king size.



Philip Morris

... gentle for modern taste

A bright new package
for the new
gentle Philip Morris

Looking Over the Eagles



DICK BIELSKI

It has been a disappointing season for the Eagles, who were rated at least on even terms with the Browns when the barrier was sprung. However, in a league so finely balanced as the NFL, it doesn't take much to tip the scales. Jim Trimble's team retains the basic virtues that caught the eye of the prognosticators and, despite its in-and-out performance, takes

the field at least an even-money choice against any rival.

Philadelphia's two prime assets are a great passing game and a rock-ribbed defensive line. In Bobby Thomason (11) and Adrian Burk (10), the Eagles have two poised quarterbacks who can throw with anyone. The one who's hot on a given day gets the call. On the terminal end, Philadelphia also has two of the best in Pete Pihos (35), twice league-leader in receptions, and Bobby Walston (83). Hal Giancanelli (27), fleet and slippery halfback, is another favored passing target.

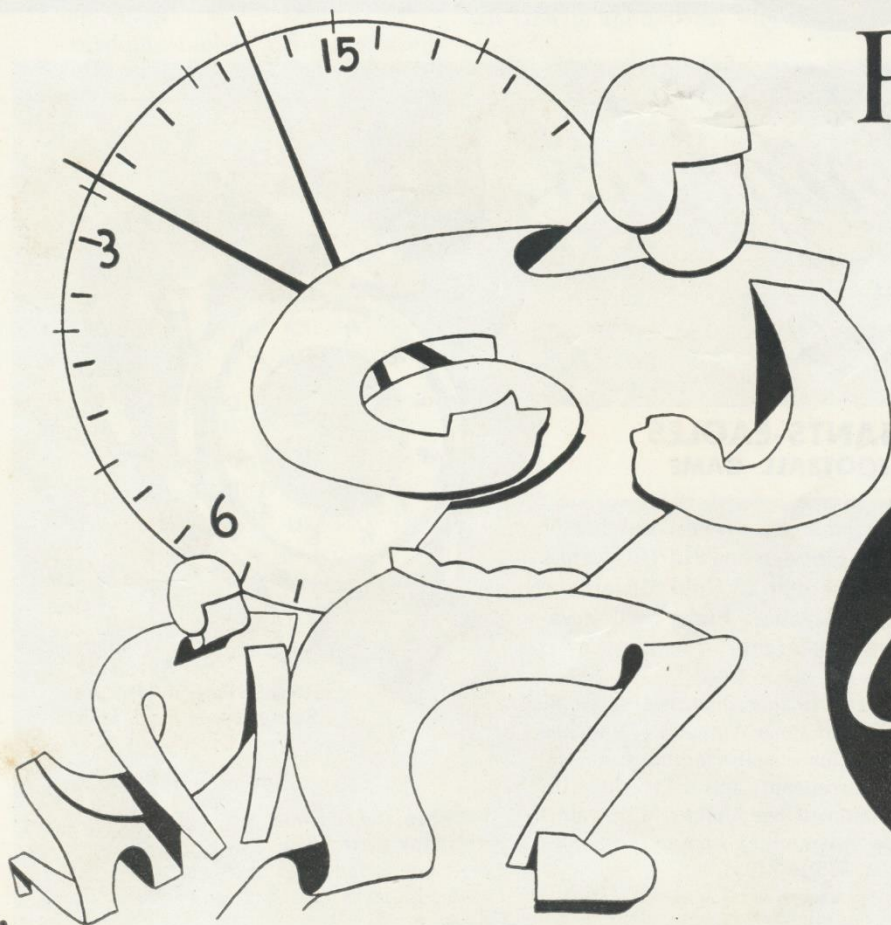
Running has been an Eagle weakness, as replacements in the offensive line have not come up to expectations. However, they don't lack ground wallop. Ted Wegert (46), a rookie with no college experience, and Dick Bielski (36), another freshman from Maryland, both can carry the mail if they get any kind of blocking assistance. The veteran Jim Parmer (43) still is around and Bob



TED WEGERT

Goode (38) recently was picked up from the Redskins.

Philadelphia's celebrated defensive line features Norm Willey (86) and Tom Scott (82) at the ends, huge Mike Jarmoluk (78) at right tackle and Chuck Bednarik (60) and Wayne Robinson (52), linebackers who specialize in harassing pass-catching ends. It's a rough-and-ready crew.



Pause...
Refresh



2 QUARTER **5 D LINE** **VICTORS 6** **HORSE TEAM 7** **DOWNS 3**

YDS. TO GO 7

THE TEAM WITH THE HIGHEST SCORE!

for bringing pleasure to all America!

CLUB SODA
CANADA DRY
SPARKLING
CANADA DRY WATER

CANADA DRY GINGER ALE

QUININE WATER
CANADA DRY
Quinac
GIN AND TONIC MIXER

Longines

THE WORLD'S MOST HONORED WATCH

Official Watch for the

GIANTS-EAGLES FOOTBALL GAME

Quality leader among the finest watches of the world is Longines—winner of 10 World's Fair Grand Prizes and 28 Gold Medals for excellence and elegance, highest Observatory Honors for accuracy.

Of special interest to sportsmen is a series of highly efficient Longines Automatic Watches employing an exclusive self-winding principle. They are shock-resistant, anti-magnetic, with unbreakable mainsprings; many are waterproof*. These outstanding Longines watches are priced from \$75 to \$195.

*as long as crystal, back and stem are intact.

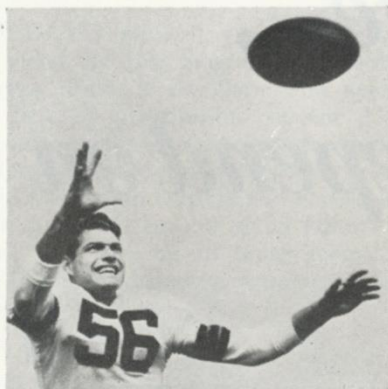
Longines
Oslo Automatic.
14K gold waterproof* case.
Sweep second hand. \$195.

SOLD AND SERVICED
BY MORE THAN
4000 LEADING JEWELERS WHO
PROUDLY DISPLAY THIS EMBLEM

U.S. OLYMPIC COMMITTEE
AAA
AMERICAN AUTOMOBILE ASS'N
AMATEUR ATHLETIC UNION
NAT'L COLLEGIATE ATHLETIC ASS'N
NAT'L AERONAUTIC ASS'N
AMERICAN POWER BOAT ASS'N
NAT'L HORSE SHOW ASS'N

LONGINES
WITH
EMBLEM

Browns Here Next Sunday



DANTE LAVELLI

The Giants will close their home season next Sunday against the Cleveland Browns. Anyone who watched the telecast of the thrilling battle between the New Yorkers and their arch-foes from Ohio a couple of weeks ago at Cleveland won't want to miss the return match.

A late drive gave the Browns a 24-14 decision but Jim Lee Howell's boys were unconvinced that Paul Brown's squad was the better team. The Giants have support in this sentiment from the viewers.

Adding fuel to a fire that needs little stoking are the anguished

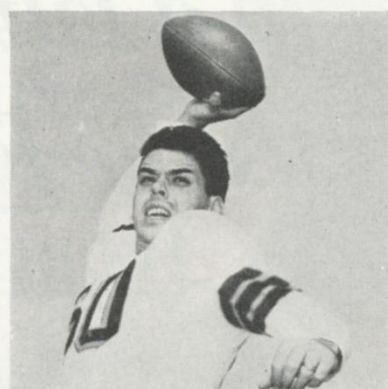


LOU GROZA

bleats attributed to Otto Graham, who had to retire when shaken up by a hard but clean tackle, and the much-publicized poke Don Colo of the Browns took at Charley Conerly of the Giants on the last play of the game.

As for the Browns, they have not radically changed their formula in ten years of operation. In view of the record, why should they?

The Browns' offensive bread-



OTTO GRAHAM

and-butter is Graham's pin-point passing to Dante Lavelli, Pete Brewster, et al. George Ratterman stands in ably on the rare occasions when Automatic Otto gets racked up. They supplement their aerial game with a sound running attack that packs added punch with Big Ed Modzelewski operating alongside Fred Morrison. Their defense is as solid as a rock, and Lou Groza still booms those field goals from long-range.

With all its virtues, Cleveland never has it easy against the Giants. Next Sunday figures to add another sizzling chapter to a great series.

Last Giant Game at Polo Grounds

CLEVELAND BROWNS

With

OTTO GRAHAM
GEORGE RATTERMAN
FRED MORRISON
ED MODZELEWSKI
DUB JONES
DANTE LAVELLI
PETE BREWSTER
LOU GROZA
FRANK GATSKI
DON COLO
LEN FORD
DON PAUL

GAME

6

NOV. 27

TICKET PRICES: \$4.50 LOWER BOX SEATS \$3.50 And \$2.50 RESERVED SEATS

HERE'S WHERE TO BUY TICKETS IN PERSON

NEW YORK FOOTBALL GIANTS NEW YORK BASEBALL GIANTS

11 West 42nd Street
New York 36, N. Y.
Mon.-Fri., 9-5; Sat., 9-1

100 West 42nd Street
New York 36, N. Y.
Mon.-Fri., 9-5; Sat., 9-12

OR

DAVEGA STORES

Jamaica—163-24 Jamaica Avenue
Hempstead—45 Main Street
Newark—110 Market Street

Hackensack—325 Main Street
White Plains—175 Main Street
Harlem—125 West 125th Street

Brooklyn—360 Fulton Street

OTHER OUTLET

ENGLEWOOD SPORTS SHOP, 31 East Palisade Avenue, Englewood, N. J.

ADDRESS ALL
MAIL ORDERS:

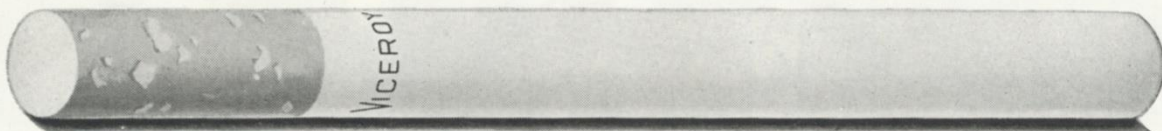
TICKET MANAGER
NEW YORK FOOTBALL GIANTS
11 West 42nd Street
New York 36, N. Y.

(Add 35 cents for mailing and handling)

Make check or money order payable: NEW YORK FOOTBALL GIANTS, INC.

Tickets Now on Sale at Eighth Avenue Entrance

In a Filter Cigarette... it's the Filter You Depend on



... AND YOU CAN REALLY DEPEND ON THE VICEROY FILTER

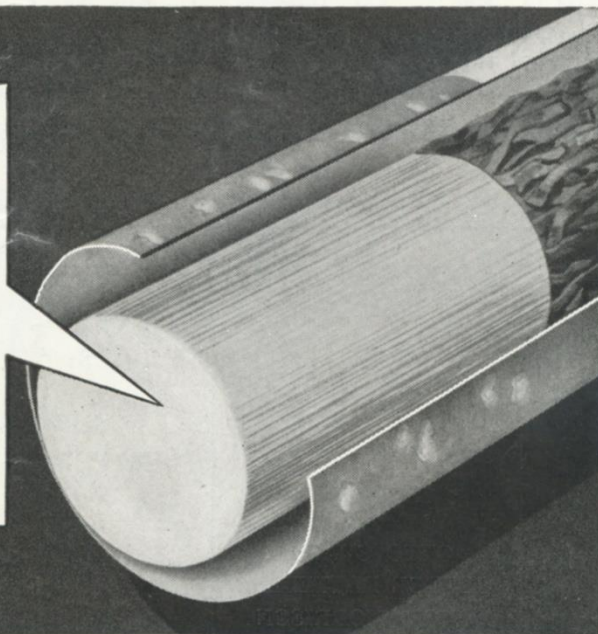
Every VICEROY filter tip contains 20,000 tiny filter traps—*twice as many of these filter traps as any other brand!* And every VICEROY tip is made through the solubilization of pure natural material.

No wonder VICEROYS taste even better than unfiltered cigarettes. No wonder more people smoke VICEROYS than any other filter cigarette in the world. Find out for yourself. Next time, get VICEROY!

ONLY VICEROY GIVES YOU

20,000 Filter Traps

**TWICE AS MANY OF
THESE FILTER TRAPS AS
ANY OTHER BRAND!**



*King-Size
Filter Tip* **VICEROY**



World's Most Popular Filter Tip Cigarette
Only a Penny or Two More
Than Cigarettes Without Filters

Giant Jottings

TODAY'S musical entertainment will be provided by the Saugus High School Band of Saugus, Mass. If the show isn't good, it won't be for lack of preparation. Jerome J. Mitchell, the director, scheduled a practice for the Polo Grounds yesterday. Ted McMillan is the Saugus drum major. A flock of baton-twirlers and cheerleaders will support the band. In one of its feature numbers, the band will line up in tepee formation and play "Hiawatha" while the auxiliaries do an Indian dance.

This year's Giant team has one unparalleled distinction. No NFL historian can recall another pro team that has three double-consonant line-backers like Svare, Svoboda and Knight.

Polo Grounds fans enjoyed the enthusiasm of the rooters who accompanied the Colts to New York last Sunday. Several of the banners flaunted by Baltimore adherents drew chuckles. One read, "Goliath was a Giant also and look what happened to him." Another said, "New York can have Turley, we'll take Ameche." The visiting contingent had a lot of fun, the Giants won—so everybody was happy.

The Yankee Stadium parking lots will be open again for the Giants' home finale with the Browns next Sunday. These facilities supplement those provided in the official Polo Grounds parking lot adjacent to the field. It's just one stop on the IND subway or a short walk across the bridge from Sedgwick Avenue to get from the Stadium to the Polo Grounds.

A fan commented the other day on the frequency with which the fair catch is signalled on punts these days. The explanation is simple. Almost all the pro teams are punting from spread formation. With the kicker 15 to 18 yards behind the line, he is almost immune from the chance of a blocked kick and concentrate on getting off a high, long kick. At the same time, the linemen, who in close kick formation would have to make protective blocks before going downfield, now can take off with the snap to cover the kick. The effect is that most safety men have decided that discretion is the better part of valor.

Last call for New Jersey fans! Don't forget the package deal the Giants have worked out in conjunction with the Public Service Bus Company. For \$5, you get a \$3.50 reserved seat and round-trip bus transportation to the Polo Grounds. Busses leave the Public Service terminals in Newark and Paterson starting at noon.

There are a couple of familiar faces on the Eagles. Bill Stribling, who put in a couple of years with the Giants, sees considerable action as an offensive end for Philadelphia and Russ Carrocchio, who was released by the Giants just a few weeks ago, has taken over at middle guard on defense. The New York-Philadelphia traffic hasn't been completely one-sided. The Giants picked up Bob Schnelker from the Eagles in a 1954 pre-season trade.

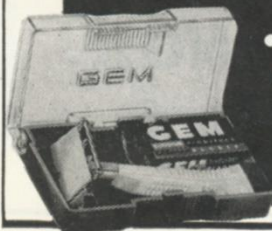
DON'T SCRAPE OFF WHISKERS
**SHAVE CLOSER
WITHOUT
IRRITATION!**

GEM "SLIM-V"
FLAT-TOP RAZOR
puts blade closer
to your face.

Unlike bulky round top razors, Gem "Slim-V" slants blade to shear off whiskers squarely at the base. Prevents skin scraping. Shaves closer.

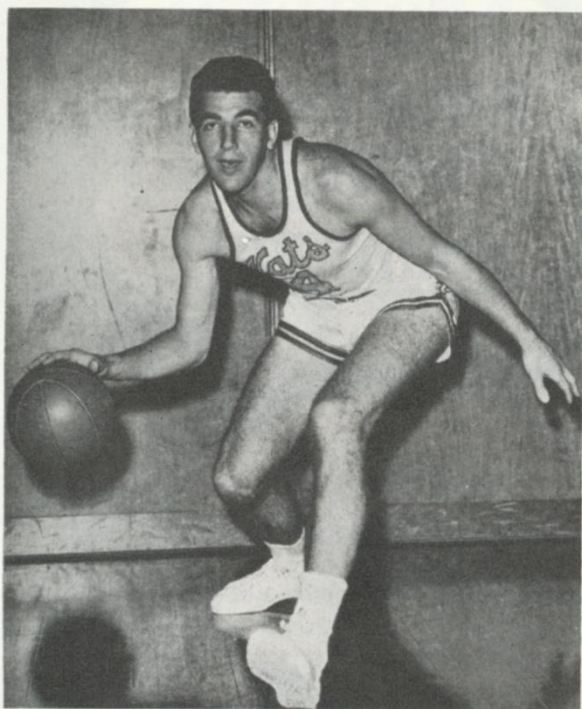
GET **GEM**
SLIM "V" RAZOR

SPECIAL VALUE!



- GEM RAZOR
- PACK OF BLADES
- TRAVEL CASE

49¢



ADOLPH SCHAYES, Syracuse Nationals

Pro Basketball Madison Square Garden

This Saturday Night

THE 1954-55 CHAMPION

Syracuse Nationals

(With Adolph Schayes, Paul Seymour, Ed Conlin, George King, Red Rocha, Earl Lloyd)

VS.

New York Knicks

(Harry Gallatin, Carl Braun, Dick McGuire, Nat Clifton, Ray Felix, Ken Sears)

FIRST GAME STARTS 7:30

Prices—\$1, \$2, \$2.50, \$3, \$3.50, \$4

Tickets on sale at Madison Square Garden box office. Mail orders promptly filled. Write Basketball Dept., Madison Square Garden, 307 W. 49th St. Add 25 cents for handling and mailing.

Go— GIANTS Go!

**ASK THE BOY
FOR THE
LESS FILLING...
More Delicious Beer**



Knickerbocker

New York's Famous Beer

Scouting Around . . .

with Jack Lavelle



I'VE discovered the secret of the Chicago Bears' success. George Halas has two big signs posted in the Bears' dressing room. One reads, "It is more blessed to give than to receive." The other says, "Do unto others before they do it unto you." I can't think

of any better mottos for a football team to follow. The Bears seem to have taken them to heart. It looks like the old Papa Bear may take a title with him when he retires from coaching at the end of this season—although I won't believe he has retired until he fails to show up on the bench.

This story hasn't got anything to do with football but I get to chuckling every time I hear it. Bugs Baer was grabbing a fast bite on his way to catching a train. A bore backed him into a corner and Bugs finally got edgy. "Isn't this suit a beauty?" droned the bore. "I got it in London." Baer fixed him with a piercing glance and asked, "Where were you at the time?" and took off for Grand Central.

In much the same situation, Tom Meany got off another classic squelcher. A non-stop conversationalist trapped him for hours. After standing it as long as he could, Tom said, "Well, I've got to go now." "Can I drive you home?" asked his windy friend. "You already have," was Meany's rejoinder.

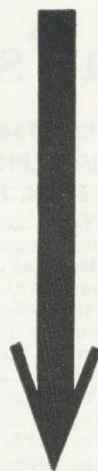
I watched the Eagles give it to the Browns last Sunday. They did Cleveland up Brown, believe me. The Browns were really hurting at the end. After making a lot of mistakes in the first half, Philadelphia finally got together and did a real job. You could notice the effect our ball game of the Sunday before had on the Browns. They seemed to be a bit tender, if that's the way to put it.

Chuck Bednarik played one of the best games I've ever seen him play. Tom Scott was terrific, too. Norm Willey is better known for having been around the league longer but you won't see many better defensive ends than Scott. The whole Eagle line play is mighty tough. When those boys hit, you can hear the leather pop from any part of the ballpark.

It was Adrian Burk's turn to play quarterback for the Eagles and he had a great day, running as well as passing. Bill Stribling, who used to play here, was his best receiver. He made a couple of catches that were worthy of Willie Mays. Another former Giant, Russ Carrocchio, made his presence felt at middle guard. He whaled the daylights out of Cleveland's Frank Gatski, who isn't used to such indignities.

TODAY'S SELECTIONS—After last Sunday's one-for-five record, maybe I should pass. But you can't keep a good man down, so here goes: Bears over Detroit, Baltimore over Los Angeles, Cleveland over Pittsburgh, Green Bay over San Francisco and Cardinals over Washington (which you maybe won't go for).

Super-Scout Jack Lavelle files his confidential report in this space every week.



Dollars

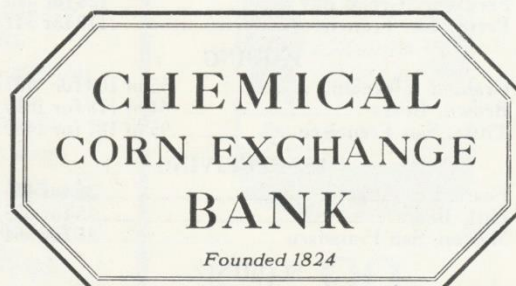
at your service

When you need money for some worthwhile purpose—such as medical or dental services, education, home repairs or remodeling, a new car—come to Chemical Corn Exchange Bank.

You may borrow from \$100 to \$5,000, or even more at low rates which include life insurance protection.

If you live or work in any of the five boroughs of New York City you will find an office of Chemical Corn Exchange Bank nearby. Your application will receive courteous, prompt and confidential attention.

*For dollars at your service—
Chemical Corn Exchange Bank.*



Convenient Offices throughout Greater New York
Member Federal Deposit Insurance Corporation

Today's NFL Pairings

Home Team		Visiting Team		Home Team		Visiting Team	
N. Y. GIANTS		vs.	PHILADELPHIA	DETROIT		vs.	CHICAGO BEARS
Won 3, Lost 5, Tied 0			Won 3, Lost 4, Tied 1	Won 2, Lost 6, Tied 0			Won 5, Lost 3, Tied 0
17—Philadelphia (a).....	27	27—New York	17	17—Green Bay (a)	20	17—Baltimore (a)	23
17—Chicago Cards (a)	28	30—Washington	31	13—Baltimore (a)	28	3—Green Bay (a)	24
23—Pittsburgh (a)	30	17—Cleveland (a)	21	10—Los Angeles	17	19—San Francisco	20
10—Chicago Cards	0	7—Pittsburgh (a)	13	24—San Francisco	27	38—Baltimore	10
17—Pittsburgh	19	24—Chicago Cards (a)	24	13—Los Angeles (a)	24	34—San Francisco (a)	23
35—Washington	7	24—Pittsburgh	0	21—San Francisco (a)	38	31—Los Angeles (a)	20
14—Cleveland (a)	24	21—Washington (a)	34	24—Baltimore	14	52—Green Bay	31
17—Baltimore	7	33—Cleveland	17	31—Pittsburgh (a)	28	24—Los Angeles	3
—Philadelphia	—	—New York (a)	—	—Chicago Bears	—	—Detroit (a)	—
—Cleveland	—	—Los Angeles	—	—Green Bay	—	—Chicago Cards (a)	—
—Washington (a)	—	—Chicago Cards	—	—Chicago Bears (a)	—	—Detroit	—
—Detroit (a)	—	—Chicago Bears (a)	—	—New York	—	—Philadelphia	—
150	142	183	157	153	196	218	154

CLEVELAND		vs.	PITTSBURGH	BALTIMORE		vs.	LOS ANGELES
Won 6, Lost 2, Tied 0			Won 4, Lost 4, Tied 0	Won 4, Lost 4, Tied 0			Won 5, Lost 3, Tied 0
17—Washington	27	14—Chicago Cards	7	23—Chicago Bears	17	23—San Francisco (a)	14
38—San Francisco (a)	3	26—Los Angeles (a)	27	28—Detroit	13	27—Pittsburgh	26
21—Philadelphia	17	30—New York	23	24—Green Bay (a)	20	17—Detroit (a)	10
24—Washington (a)	14	13—Philadelphia	7	10—Chicago Bears (a)	38	28—Green Bay (a)	30
41—Green Bay	10	19—New York (a)	17	13—Washington	14	24—Detroit	13
26—Chicago Cards (a)	20	0—Philadelphia (a)	24	14—Green Bay	10	20—Chicago Bears	31
24—New York	14	13—Chicago Cards (a)	27	14—Detroit (a)	24	27—San Francisco	14
17—Philadelphia (a)	33	28—Detroit	31	7—New York (a)	17	3—Chicago Bears (a)	24
—Pittsburgh	—	—Cleveland (a)	—	—Los Angeles	—	—Baltimore (a)	—
—New York (a)	—	—Washington	—	—San Francisco	—	—Philadelphia (a)	—
—Pittsburgh (a)	—	—Cleveland	—	—Los Angeles (a)	—	—Baltimore	—
—Chicago Cards	—	—Washington (a)	—	—San Francisco (a)	—	—Green Bay	—
208	138	143	163	133	153	169	162

CHICAGO CARDS		vs.	WASHINGTON	GREEN BAY		vs.	SAN FRANCISCO
Won 3, Lost 4, Tied 1			Won 5, Lost 3, Tied 0	Won 4, Lost 4, Tied 0			Won 3, Lost 5, Tied 0
7—Pittsburgh (a)	14	27—Cleveland (a)	17	20—Detroit	17	14—Los Angeles	23
26—New York	17	31—Philadelphia (a)	30	24—Chicago Bears	3	3—Cleveland	38
24—Washington (a)	10	10—Chicago Cards	24	20—Baltimore	24	20—Chicago Bears (a)	19
0—New York (a)	10	14—Cleveland	24	30—Los Angeles	28	27—Detroit (a)	24
24—Philadelphia	24	14—Baltimore (a)	13	10—Cleveland (a)	41	23—Chicago Bears	34
20—Cleveland	26	7—New York (a)	35	10—Baltimore (a)	14	38—Detroit	21
27—Pittsburgh	13	34—Philadelphia	21	31—Chicago Bears (a)	52	14—Los Angeles (a)	27
14—Green Bay (a)	31	7—San Francisco	0	31—Chicago Cards	14	0—Washington (a)	7
—Washington	—	—Chicago Cards (a)	—	—San Francisco	—	—Green Bay (a)	—
—Chicago Bears	—	—Pittsburgh (a)	—	—Detroit (a)	—	—Baltimore (a)	—
—Philadelphia (a)	—	—New York	—	—San Francisco (a)	—	—Green Bay	—
—Cleveland (a)	—	—Pittsburgh	—	—Los Angeles (a)	—	—Baltimore	—
144	145	144	164	176	193	139	193

NATIONAL LEAGUE LEADERS

RUSHING

1. Ameche, Baltimore	142 for 707 yds.
2. Ferguson, Green Bay	128 for 633 yds.
3. Perry, San Francisco	110 for 541 yds.

PASSING

1. Graham, Cleveland	55 of 108 for 987 yds.
2. Brown, Bears	64 of 118 for 1016 yds.
3. Tittle, San Francisco	95 of 187 for 1480 yds.

PASS-RECEIVING

1. Fears, Los Angeles	36 for 435 yds.
2. Hill, Bears	35 for 655 yds.
3. Wilson, San Francisco	35 for 564 yds.

SCORING

1. Walker, Detroit	69 pts.
2. Blanda, Bears	60 pts.
3. Janowicz, Washington	60 pts.

NATIONAL LEAGUE STANDINGS

EASTERN CONFERENCE

	W.	L.	T.	Pct.	Points For	Points Agst.
Cleveland	6	2	0	.750	208	138
Washington	5	3	0	.625	144	164
Pittsburgh	4	4	0	.500	143	163
Philadelphia	3	4	1	.429	183	157
Chicago Cards	3	4	1	.429	144	145
NEW YORK	3	5	0	.375	150	142

WESTERN CONFERENCE

Chicago Bears	5	3	0	.625	218	154
Los Angeles	5	3	0	.625	169	162
Green Bay	4	4	0	.500	176	193
Baltimore	4	4	0	.500	133	153
San Francisco	3	5	0	.375	139	193
Detroit	2	6	0	.250	153	196

PLEASE USE ENTRANCE RAMP NEAREST YOUR SEAT

My master likes MELROSE



Smart pup! He calls the right play...reminds his master to drink "the very best" — Melrose Rare, of course. Once tasted, *you'll* never forget the flavor of its rare 7-year-old whiskies. And Melrose, remember, contains *more, older, finer* whiskies than any other leading spirit blend!

MELROSE

RARE



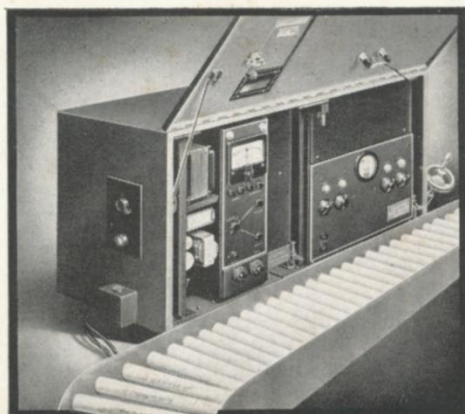
NATIONAL LEAGUE LEADERS

Rushing	Ameche, Baltimore	142 for 707 yds.
Passing	Graham, Cleveland	58 of 108 for 987 yds.
Pass-Receiving	Fears, Los Angeles	36 for 435 yds.
Scoring	Walker, Detroit	69 pts.
Punting	Van Brocklin, Los Angeles	46-yd. avg.
Punt Returns	Drzewiecki, Bears	15 for 140 yds.
Kick-Off Returns	Carmichael, Green Bay	8 for 281 yds.
Interceptions	Sherman, Los Angeles	8 for 72 yds.



Full 90 proof

Enjoy a Cool Mildness impossible before

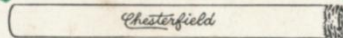


—thanks to the Miracle of *AccuRay*

Get truly modern cigarette enjoyment! With electronic accuracy. Accu-Ray checks and controls the making of your Chesterfield. For the first time you get a...

comes through. Yet because this *measurably* better cigarette *smokes more slowly* — you enjoy a cool mildness never possible before.

↓ PERFECT-SMOKE-COLUMN-FROM-END-TO-END! ↓



Notice the extra flavor that

So put a smile in your smoking! Buy Chesterfield! Smoother ... cooler ... best for you!



PUT A
SMILE IN YOUR
SMOKING!



Chesterfield

Made the Modern Way — with *AccuRay*