

OCTOBER 28, 1956

YANKEE STADIUM



EAGLES

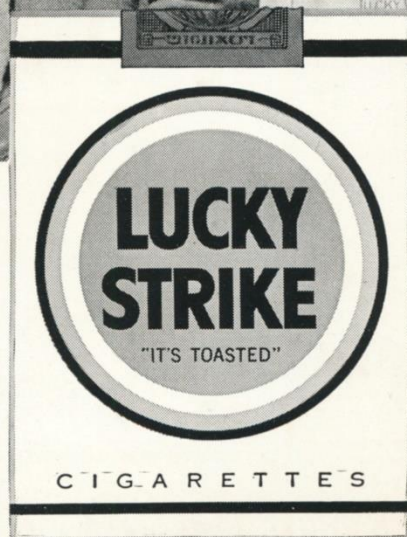
Light up a Lucky—

it's light-up time!



Luckies Taste Better

Cleaner, Fresher, Smoother!

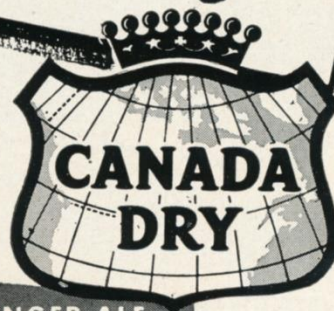


**"IT'S
TOASTED"**
to taste
better!

PRODUCT OF *The American Tobacco Company* AMERICA'S LEADING MANUFACTURER OF CIGARETTES



**Confound it, man,
I asked for
Canada Dry!**



**GINGER ALE
CLUB SODA
QUININE WATER**

A Mixer for Every Taste

OFFICIAL WATCH FOR



**U. S. OLYMPIC
COMMITTEE
1948-1952-1956**



**NAT'L AERONAUTIC
ASSN.**



**NAT'L COLLEGIATE
ATHLETIC ASSN.
CHAMPIONSHIPS**



**AMERICAN AUTO-
MOBILE ASSN.**



**NATIONAL SKI
ASSN.**



**AMERICAN
POWERBOAT
ASSN.**



**A.A.U.
CHAMPIONSHIPS**



**NATIONAL HORSE
SHOW ASSN.**

and many others

Longines

THE WORLD'S MOST HONORED WATCH

Official Watch for the

**GIANTS-EAGLES
FOOTBALL GAME**

Longines, first watch of sport, is recognized as official for timing world records and international events by all international sports and contest associations. Every Longines watch, for whatever its use, is made to be the best of its kind. For yourself, as a gift, no other name on a watch means so much as Longines, the world's most honored watch.

Longines Wittnauer Watch Company

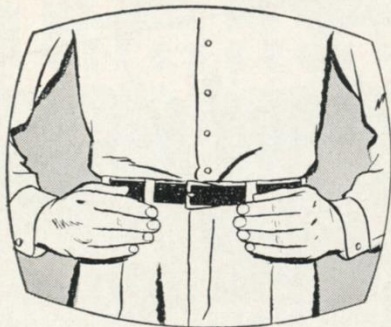


**10 WORLD'S FAIR
GRAND PRIZES
28 GOLD MEDALS**

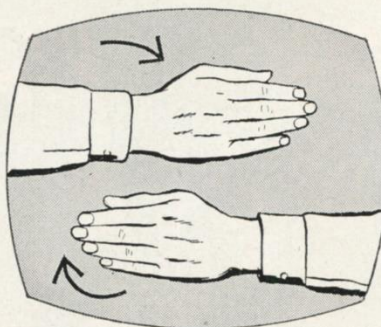


Longines watches to cope with outdoor life—fully protected against all common watch hazards. For her—Longines Skylark "A.P." For him—Longines Sportsman "D", each \$89.50. Other Longines watches from \$71.50.

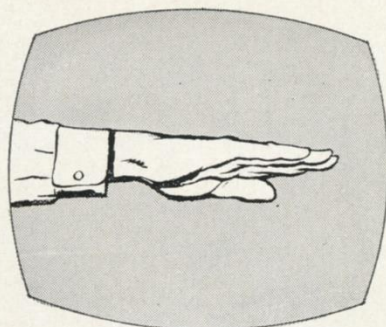
DO YOU KNOW YOUR SIGNS?



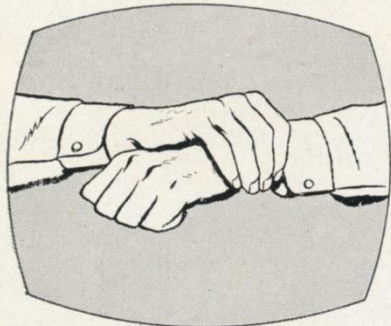
Arms akimbo signal flashed to indicate team off-side.



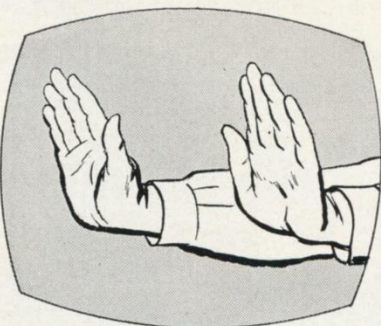
Signal used for illegal position or procedure.



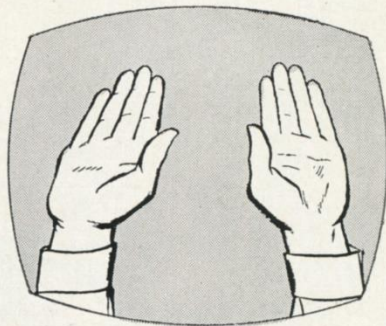
Offensive team charged with illegal motion or shift.



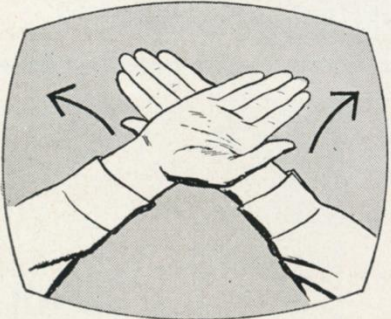
This signal means illegal use of hands or arms.



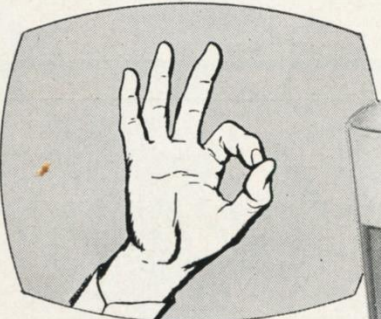
Signal for forward pass or kick catching interference.



Familiar signal for touch-down or field goal.



Team — or official — calls for time out.



Fan calls for Ballantine's famous real beer flavor — the liveliest taste in town!

Ask the man for

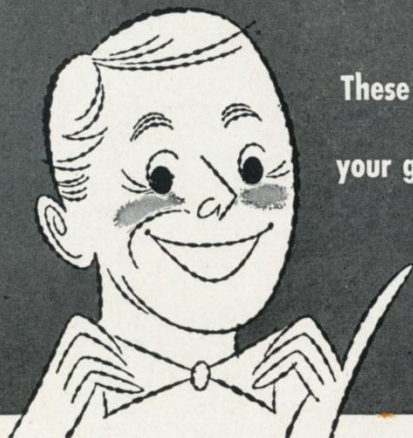
Ballantine beer

YOU'LL BE SO GLAD YOU DID!



P. BALLANTINE & SONS, NEWARK, N. J.

FOR *Championship* GROOMING EVERY DAY MAKE IT **MENNEN** ALL THE WAY!



These famous Mennen products are designed for your good health and your good grooming needs. Be sure you get **MENNEN FOR MEN**

MENNEN Spray Deodorant FOR MEN

No. 1 seller gives round-the-clock protection.

60¢* \$1.00*



MENNEN Foam Shave

Smoother shaves with Special Menthol Formula. Fastest growing seller.

79¢*



MENNEN Shampoo FOR MEN

Designed for men's use and convenience—with hexachlorophene and lanolin.

75¢*



MENNEN 3 great shave creams . . .

lather regular 40¢ 60¢
brushless 35¢ 55¢
lather with menthol

60¢*



MENNEN Skin Bracer

2 to 1 favorite—the after shave lotion men buy for themselves!

60¢* \$1.00*



MENNEN Hair Creme

Greaseless . . . best for natural daily grooming.

60¢*



MENNEN New AFTA

No-sting, non-alcoholic after shave lotion . . . soothes and conditions.

\$1.00*



MENNEN After-Shave Talc

Regular or electric shave—ideal before or after . . . neutral tint doesn't show.

35¢* 60¢*



MENNEN Bath Talc FOR MEN

Bath-fresh comfort and protection.

60¢*



*Plus Fed. Tax

DON'T MISS THESE
GREAT **MENNEN**

TV SHOWS



WED. NITE FIGHTS
ABC-TV Network



HIGH FINANCE
Starring Dennis James
CBS-TV Network

LOVE THAT CAMEL!

WATCH

Phil Silvers

AS SGT. BILKO ON THE
"PHIL SILVERS SHOW" CBS-TV



R. J. Reynolds Tobacco Co., Winston-Salem, N. C.

HAVE A REAL CIGARETTE

...have a Camel!

Discover the difference between "just smoking" and Camels!

Taste the difference! Camels are rich, full-flavored, and deeply satisfying — pack after pack. *Feel* the difference! The exclusive Camel blend of quality tobaccos has never

been equalled for smooth, agreeable smoking. *Enjoy* the cigarette smoked by more people, year after year, than any other brand. Try Camels — they've really got it!



GIANT COACHES: Left to right—Vince Lombardi, Ed Kolman, Jim Lee Howell, Ken Kavanagh, Tom Landry.

Giants Stress Coaching Staffwork

JIM LEE HOWELL and his staff are entitled to take deep bows for the well-rounded performance of the Giants in last Sunday's home opener against the Pittsburgh Steelers.

This 1956 Giant squad is the best balanced Giant team in years—and it didn't get that way by luck or accident.

The slick all-around job the Giants turned in against the Steelers, and have been turning in Sunday after Sunday, represents the culmination of three years of painstaking effort by Howell and his aides: Vince Lombardi, Ed Kolman, Ken Kavanagh and Tom Landry.

There was much work to be done when Howell took command of the Giants at the start of the 1954 campaign. The team obviously needed a top-to-bottom overhauling.

Personnel had begun to wear thin in several key spots. The offense had not consistently kept pace with pro football's accelerated attacking tempo. The defense needed shoring.

A straight-thinking, straight-

talking, hard-nosed football man, Howell quickly sized up the Giant deficiencies and did something about them.

It takes only a quick glance at the Giant roster to appreciate the personnel changes that have been made at Jim Lee's instigation. The 33-man Giant squad includes only ten players who antedate the Howell regime.

The attack has been completely restyled to a point where it is no exaggeration to say that the Giant offense is the most varied and advanced in pro football. Defensive variations have been added that impose an added burden on the opposition.

These sweeping changes came about by the correlated effort of a young, aggressive coaching staff

that works together like a well-oiled machine.

Pooh-poohing his own part in the obvious all-around Giant improvement, Howell modestly declares, "The staff does the work. I just keep peace."

An organizational genius in his quiet way, Jim Lee has assigned each of his aides a definite area of responsibility and stands firmly behind their decisions.

Here's how the coaching chores are divided: Lombardi, backfield coach, has charge of the offense and selects the play sequences that are to be emphasized in any given game. Kavanagh, end coach, sets the pass patterns. Kolman, line coach, directs the special units used for punting, place-kicking and kick-offs. Landry, defensive coach, designs the defense to be used.

Considering the effectiveness the Giants have showed in running and passing, in stopping enemy runs and passes and in punting and place-kicking, the Howell staff system is a smashing success.

Hats off to Jim Lee and his aides!

Giant Games at Stadium

Oct. 28.....Philadelphia Eagles
Nov. 11.....Chicago Cardinals
Nov. 25.....Chicago Bears
Dec. 2.....Washington Redskins
Dec. 9.....Cleveland Browns

Kick-Off Time: 2:05 P.M.

PLEASE USE ENTRANCE RAMP NEAREST YOUR SEAT

This book is published by HARRY M. STEVENS, Inc., 320 Fifth Avenue, New York 1, N. Y.



More toasts are made with
Seagram's 7 Crown than any other whiskey...
because it's American whiskey at its finest

Say Seagram's and be Sure

An "Old Pro" But Young at Heart, That's the Giants' Em Tunnell

DOING business again for the Giants at his same old stand of left safety is one of pro football's most remarkable "old pros"—Emlen Tunnell.

Few rookies ever faced as much pressure as did Tunnell, the first Negro to play for the Giants, in 1948. The story is told of some early season games that year when Tunnell caught a punt and was immediately hurled to the ground by four of five beefy linemen.

"Signal for a fair catch next time," instructed one of the coaches. "You're not playing in college now. These players are big enough and fast enough to knock you into little pieces if you don't."

Obediently, Tunnell made a fair catch on the next punt. There was a smattering of booing from the stands. Tunnell looked up in surprise as he jogged to the bench. On the second fair catch the booing was more pronounced.



"If you want a fair catch on the next punt you better put in someone else," Tunnell grimly told the coaches. "I'm not making any more fair catches. The crowd thinks I'm afraid. I'll show them."

Twice on succeeding punts Tunnell was buried by tacklers. The third time he twisted loose and was off on a spectacular touchdown run that brought the crowd, roaring, to its feet.

That was the beginning of a great career for Em, who walked in off the street to get his job with the Giants after a couple of seasons at Iowa. Now in his ninth season, Tunnell is the all time NFL record holder for interceptions. He holds another record for most punts returned in a season, and he once made four touchdown runbacks in a season, tying a third mark. He has never missed selection to the Pro Bowl Game, one of the few stars so honored. In addition, he has played in 94 consecutive games, a total seldom approached by slender halfbacks.

Tunnell is an intelligent, reliable, but at the same time, a care-free young man who would rather be a football player than president. In the off season he travels for a beer company, which regards him as a valuable member of its sales force. With the money he has made from pro football, he has bought a home for his mother in Garrett Hill, Pa. He is single.

For years Tunnell has been the Giants' offense on defense. While some fans wondered why so talented a broken field runner was not given a chance in the offensive backfield, the Giants pointed out that year after year Tunnell gained as much or more ground from his defensive safety position as the League's best running backs.

One season Dan Towler won the ball carrying championship with 894 yards. Not a bad total—but Tunnell beat that with 924 gained running back punts, kickoffs and intercepted passes. In addition, more than one wounded halfback



was moaning that the 183 pound Tunnell tackled harder than any man in football.

Tunnell, as much as any other player, has caused a pronounced change in one phase of the game. He became so deadly at running back punts that coaches experimented with various spread punt formations, and then selected the one most likely to stop Tunnell before he got started. Today, all clubs use a spread which throws half a dozen or more tacklers downfield under the punt.

Em's courage is unquestioned. Once he ran into a goal post while trying to intercept a pass. Knocked cold, he was helped to the bench. A few seconds later he was seen running back into the game. "The trainers and I were holding him at the sidelines," recalled Dr. Francis Sweeny, team physician. "But Em broke away from us and ran back onto the field."

Dr. Sweeny, after 25 years with the Giants, lists Tunnell as one of the half dozen gamest Giants of all time, speaking of him in the same breath with Mel Hein, Ward Cuff and other legendary Giant heroes.

Em's getting into the legendary class himself but he's a legend who's still very much alive.

PLEASE USE ENTRANCE RAMP NEAREST YOUR SEAT

J. W. DANT WORLD'S LARGEST SELLING BONDED BOURBON



I'm Newt Kook, President of the Dant Distillery. Down in Kentucky we have a saying:

"The only way to have a friend is to be one..."

And I don't know a better way of being a friend to so many as to give them so much for so little. My J. W. Dant genuine Kentucky sour mash bourbon does just that. No wonder it has made more friends the world over than any other Bond!

GIANT LEADERS

Rushing.....	Gifford: 42—298 yds.
Passing.....	Conerly: 33 of 61
Receiving.....	Gifford: 20—239 yds.
Scoring.....	Triplett: 36 pts.
Punting.....	Chandler: 41.8-yd. avg.
Punt Returns.....	Tunnell: 5—37 yds.
Kick-Off Returns.....	Filipski: 4—98 yds.
Interceptions.....	Hughes: 1—38 yds.



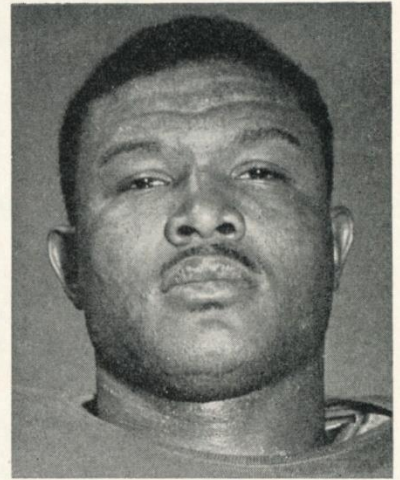
Meet the Giants



Char. Conerly

Charley Conerly (42), now in his ninth season with the Giants, is one of pro football's great clutch players. Going into the current season, the former Mississippi All-America had thrown 113 touchdown passes. He holds just about every Giant passing record and several league marks. Originally a single wing tailback, Chuck has developed into a slick T quarterback.

Mel Triplett (33) was late in reporting last year and saw limited service as a rookie. He's making up for lost time this season. He scored three touchdowns in each of the first two Giant games. A powerful, determined runner, he gives the Giants their heaviest inside punch in years. The 24-year-old Toledo graduate is married and has five children.



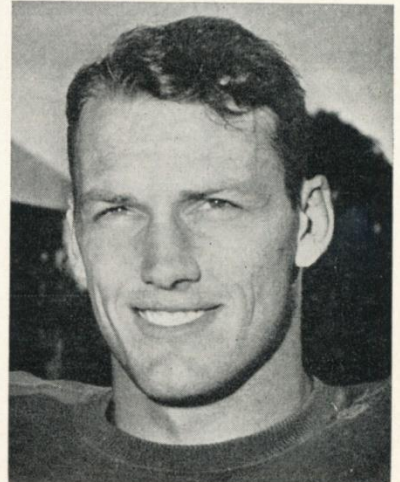
Mel Triplett



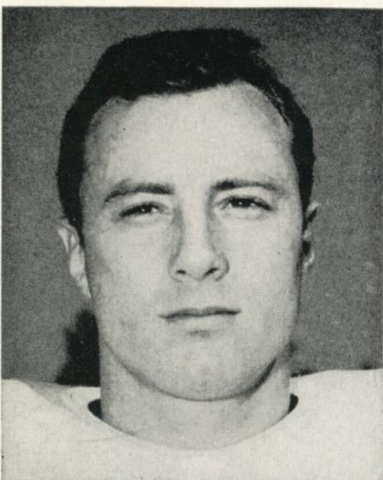
Bob Schnelker

Bob Schnelker (85), a Bowling Green alumnus, came to the Giants in 1954 after putting in a year with the Eagles. He was the New Yorkers' top pass-receiver in 1954 and ranked third on the team last season, grabbing a total of eleven touchdown tosses in these two campaigns. He is not extremely fast but has the knack of getting loose and seldom muffs a pass he can reach. Also does a solid job of blocking.

Jack Stroud (66), a four-year Giant, at last is getting long-deserved recognition for his blocking feats. The square-shouldered, deep-chested Tennessee graduate, as often as not, is the guy who springs Gifford, Webster or Triplett on their long dashes. Fast afoot, he shines at pulling out of the line and leading wide plays. Keep your eyes on his No. 66.



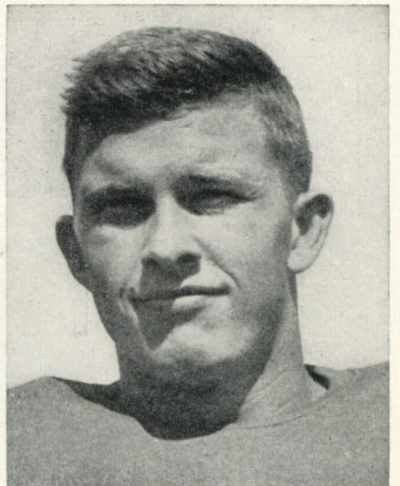
Jack Stroud



Herb Rich

Herb Rich (27) talked of calling it quits at the end of last season. But the lure of football proved too strong for this veteran of seven pro campaigns and, to the delight of the Giants, he decided to give it another whirl. Acquired from Los Angeles during the 1954 season, the 28-year-old Vanderbilt graduate is a deadly tackler and vigilant pass-defender at right safety.

Ray Beck (61), a Giant since 1952, with time out for years of Army service, probably is the most versatile Giant lineman. Jim Howell does not hesitate to use the big Georgia Tech graduate anywhere. As a rookie, he was a regular offensive guard. Since his return from service, he has settled down at middle defensive guard and is rated one of the best. Despite his 225 pounds, he's as fast and nifty as a halfback.



Ray Beck

AUTOGRAPH COLLECTORS: "Meet the Giants" will be a weekly program feature.

PLEASE USE ENTRANCE RAMP NEAREST YOUR SEAT

PHILADELPHIA EAGLES

KICK-O
2:05 P.

OFFENSE

L. H. Keller (23)		Q. B. Thomason (11)		F. B. Schaefer (24)		R. H. Giancanelli (27)	
R. E. Bredice (89)	R. T. Dimmick (65)	R. G. Huxhold (63)	C. Kelley (50)	L. G. Lansford (79)	L. T. Wydo (75)	L. E. Walston (83)	

DEFENSE

L. E.-L. B. Scott (82)		TACKLE Weatherall (77)	TACKLE Richardson (72)	TACKLE Campbell (78)	TACKLE Youngelman (73)	R. E.-L. B. Willey (86)	
L. H. Bell (81)	L. S. Norton (41)	C. L. B. Bednarik (60)	R. S. Bawel (20)	R. H. Brookshier (40)			

Eagle Roster

No.	Player	Position	Weight	Height	Age	College	Yrs. Pro
10	Burk, Adrian	QB	190	6:02	28	Baylor	7
11	Thomason, Bobby	QB	200	6:01	28	VMI	7
20	Bawel, Bibbles	HB	190	6:01	25	Evansville (Ind.)	3
22	Riley, Leon	HB	190	6:01	24	Detroit	2
23	Keller, Ken	HB	185	5:11	22	North Carolina	1
24	Schaefer, Don	FB-HB	195	6:00	22	Notre Dame	1
25	Retzlaff, Palmer	HB	205	6:01	26	South Dakota State	1
27	Giancanelli, Harold	HB	179	5:10	27	Loyola (L. A.)	4
36	Bielski, Dick	FB	226	6:01	24	Maryland	2
40	Brookshier, Tom	HB	194	6:01	24	Colorado	2
41	Norton, Jerry	HB	200	5:11	25	SMU	3
43	Parmer, Jim	HB	195	6:00	29	Oklahoma A. and M.	9
45	Ryan, Rocky	E-HB	195	6:01	24	Illinois	1
50	Kelley, Bob	C	225	6:02	26	West Texas	2
52	Robinson, Wayne	LB	225	6:02	26	Minnesota	5
53	Pellegrini, Bob	LB	230	6:02	21	Maryland	1
60	Bednarik, Chuck	LB	230	6:03	31	Pennsylvania	8
63	Huxhold, Ken	G	225	6:02	27	Wisconsin	3
65	Dimmick, Tom	G-LB	240	6:06	25	Houston	1
66	D'Agostino, Frank	G	250	6:01	22	Auburn	1
68	Nipp, Maurice	G	220	6:00	26	Loyola (L. A.)	3
72	Richardson, Jess	T	250	6:02	26	Alabama	4
73	Youngelman, Sid	T	250	6:03	24	Alabama	2
75	Wydo, Frank	T	235	6:04	32	Duquesne-Cornell	10
77	Weatherall, Jim	T	235	6:04	26	Oklahoma	2
78	Campbell, Marion	T	248	6:03	25	Georgia	3
79	Lansford, Buck	T	230	6:02	22	Texas	2
80	Stribling, Bill	E	205	6:01	28	Mississippi	5
81	Bell, Eddie	E-HB	205	6:01	25	Pennsylvania	2
82	Scott, Tom	E	220	6:02	26	Virginia	4
83	Walston, Bobby	E	185	6:00	27	Georgia	6
86	Willey, Norman	E	245	6:03	29	Marshall	7
89	Bredice, John	E	203	6:01	22	Boston U.	1

GIANT SPECI
PAT and FG—Agajanian (1)
Gifford (1)
Punting—Chandler (34)
Kick-Offs—Chandler (34)

OFFICIAL

Referee

John Glascott (7), I

Umpire

Louis Palazzi (51),

Back Jud

Stanley Jaworowski (29)

Head Lines

Charles Berry (31)

Field Jud

Michael Lisetski (16)

EAGLE SPECI

PAT and FG—Walston (1)

Punting—Burk

Kick-Offs—Bielski (36)

EAGLE STAFF: Hugh Devore, Notre Dame, head coach; Steve Owen, Phillips U., assistant coach; Ed Doherty, Boston College, assistant coach; Frank Kilroy, Temple, player-coach; Steve Van Buren, Louisiana State, assistant coach; Frank Wiechee, trainer; Fred Schubach, equipment manager; Dr. Thomas Dowd, physician; Dr. Francis Loftus, dentist.

The Official Watch for Timing Today's Game I L

PLEASE USE ENTRANCE RAMP

Enjoy it tonight!

Calvert



RESERVE

NEW YORK GIANTS

OFFENSE

R. H. Webster (29)	F. B. Triplett (33)	Q. B. Heinrich (11)	L. H. Gifford (16)
R. E. MacAfee (80)	R. T. Yelvington (72)	R. G. Stroud (66)	C. Wietecha (55)
		L. G. Spinks (62)	L. T. Brown (79)
			L. E. Schnelker (85)

DEFENSE

L. E. Yowarsky (78)	L. T. Modzelewski (77)	M. G. Huff (70)	R. T. Grier (76)	R. E. Robustelli (81)
L. W. Hughes (48)	L. L. B. Svoboda (30)	L. S. Tunnell (45)	R. S. Rich (27)	R. L. B. Svare (84)
				R. W. Nolan (25)

SPECIALISTS

Agajanian (8), Chandler (34),
Gifford (16)
Huff (34), Conerly (42)
Huff (34), Agajanian (8)

OFFICIALS

Referee

Huff (7), Pennsylvania

Umpire

Huff (51), Penn State

Back Judge

Huff (29), Georgetown

Line Judge

Huff (31), Lafayette

Field Judge

Huff (16), Muhlenberg

SPECIALISTS

Huff (83), Bielski (36).
Huff—Burk (10).
Huff (36), Walston (83).

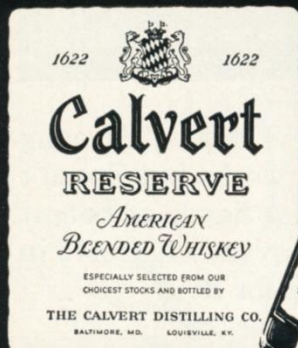
Giant Roster

No.	Player	Position	Weight	Height	Age	College	Yrs. Pro
8	Agajanian, Ben	E	215	6:00	37	New Mexico	7
11	Heinrich, Don	QB	180	6:00	25	Washington	3
12	Clatterbuck, Bobby	QB	195	6:03	24	Houston	3
16	Gifford, Frank	HB	205	6:01	26	U. S. C.	5
20	Patton, Jim	HB	180	5:11	24	Mississippi	2
25	Nolan, Dick	HB	185	6:01	24	Maryland	3
27	Rich, Herb	HB	185	5:11	28	Vanderbilt	7
29	Webster, Alex	HB	210	6:03	25	North Carolina State	2
30	Svoboda, Bill	FB	210	6:01	27	Tulane	7
33	Triplett, Mel	FB	215	6:01	24	Toledo	2
34	Chandler, Don	HB	205	6:02	21	Florida	1
40	Filipski, Gene	HB	185	5:10	25	Villanova	1
42	Conerly, Charley	QB	195	6:01	32	Mississippi	9
44	Rote, Kyle	HB	205	6:00	28	S. M. U.	6
45	Tunnell, Em	HB	200	6:01	31	Iowa	9
48	Hughes, Ed	HB	180	6:01	24	Tulsa	3
55	Wietecha, Ray	C	225	6:01	27	Northwestern	4
61	Beck, Ray	G	225	6:02	24	Georgia Tech	3
62	Spinks, Jack	G	240	6:01	26	Alcorn A. and M.	4
65	Huth, Gerald	G	210	6:00	23	Wake Forest	1
66	Stroud, Jack	G	230	6:01	27	Tennessee	4
70	Huff, Sam	T	230	6:01	21	West Virginia	1
72	Yelvington, Dick	T	235	6:02	27	Georgia	5
76	Grier, Roosevelt	T	275	6:05	23	Penn State	2
77	Modzelewski, Dick	T	260	6:00	25	Maryland	4
78	Yowarsky, Walt	T	235	6:02	28	Kentucky	5
79	Brown, Roosevelt	T	245	6:03	24	Morgan State	4
80	MacAfee, Ken	E	205	6:02	27	Alabama	3
81	Robustelli, Andy	E	230	6:01	28	Arnold	6
82	Katcavage, Jim	E	225	6:03	21	Dayton	1
84	Svare, Harland	E	215	6:00	25	Washington State	4
85	Schnelker, Bob	E	215	6:04	26	Bowling Green	4
89	Livingston, Cliff	E	215	6:03	25	U. C. L. A.	3

Longines—"The World's Most Honored Watch"

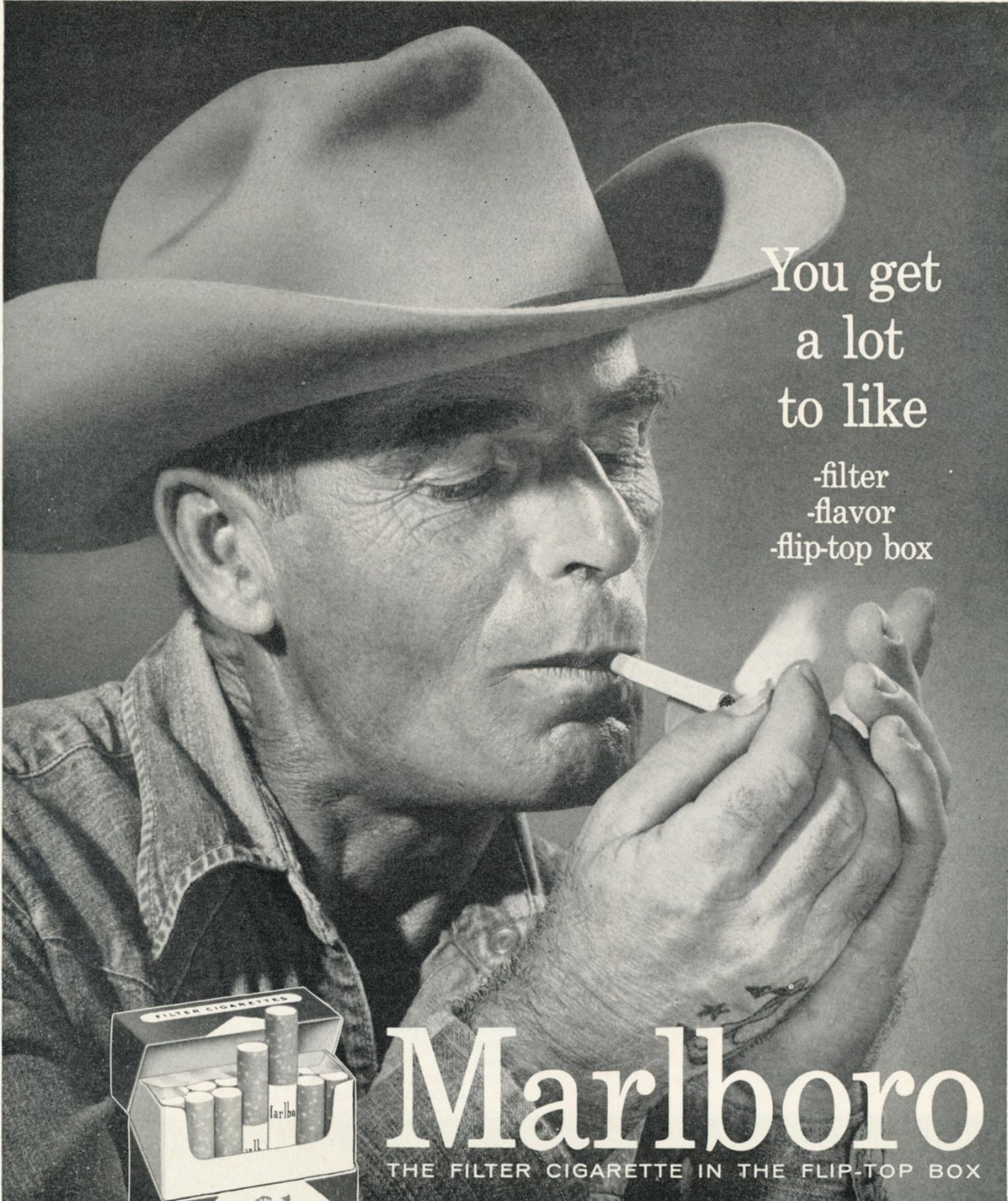
RAMP NEAREST YOUR SEAT

GIANT STAFF: Jim Lee Howell, Arkansas, head coach; Vince Lombardi, Fordham, backfield coach; Ed Kolman, Temple, line coach; Ken Kavanaugh, L. S. U., end coach; Tom Landry, Texas, defensive coach; John Johnson, Sid Moret and John Dziegiel, trainers; Dr. Francis J. Sweeny, physician; Dr. Arthur G. Croker, dentist.



Nothing finer in American taste

CALVERT DISTILLERS CO., N.Y.C. • AMERICAN BLENDED WHISKEY • 86.8 PROOF • 65% GRAIN NEUTRAL SPIRITS



You get
a lot
to like

-filter
-flavor
-flip-top box

Marlboro

THE FILTER CIGARETTE IN THE FLIP-TOP BOX



**NEW
FLIP-TOP BOX**

Firm to keep
cigarettes
from crushing.
No tobacco
in your pocket.

This Marlboro is a lot of cigarette. The easy-drawing filter feels right in your mouth. It works but doesn't get in the way. You get the man-size flavor of honest tobacco. The Flip-Top Box keeps every cigarette in good shape and you don't pay extra for it.

POPULAR
FILTER PRICE

MARLBORO BRINGS YOU GIANTS GAMES ON TV

Looking Over the Eagles



TOM SCOTT

The Eagles have a new coaching staff, headed by Hughey Devore, the old Notre Damer, and a lot of new players. But the basic character of the team hasn't changed much. Philadelphia still features passing on the attack and rib-crushing line play on defense.

In **Bobby Thomason (11)** and **Adrian Burk (10)**, the Eagles have two "old pro" quarterbacks who still can throw with the best. For the past six years,

these fellows have been taking turns in the handback slot with lethal effect. If one isn't "hot," the other usually is. This seems to be Thomason's year. He has been doing most of the work. However, Burk stands in constant readiness to relieve and meanwhile supplies the Eagles with the best punting in the NFL.

The veteran **Bobby Walston (83)** tops a gifted receiving corps that includes the fleet and elusive **Skippy Giancanelli (27)** and **John Bredice (89)**, a rookie from Boston U.

New boys supply running punch that the Eagles lacked last year. **Don Schaefer (24)**, Notre Dame's 1955 All-America fullback, and **Ken Keller (23)**, a shifty lad from North Carolina, both have cracked the starting line-up.

The defensive unit is led by those destructive ends, **Norm (Wild Man) Willey (86)** and **Tom Scott (82)**. They have a contest on every play, to see who can hit the other team's passer first and hardest. Then, there are those devastating line-backers, **Chuck Bednarik (60)**, a peren-

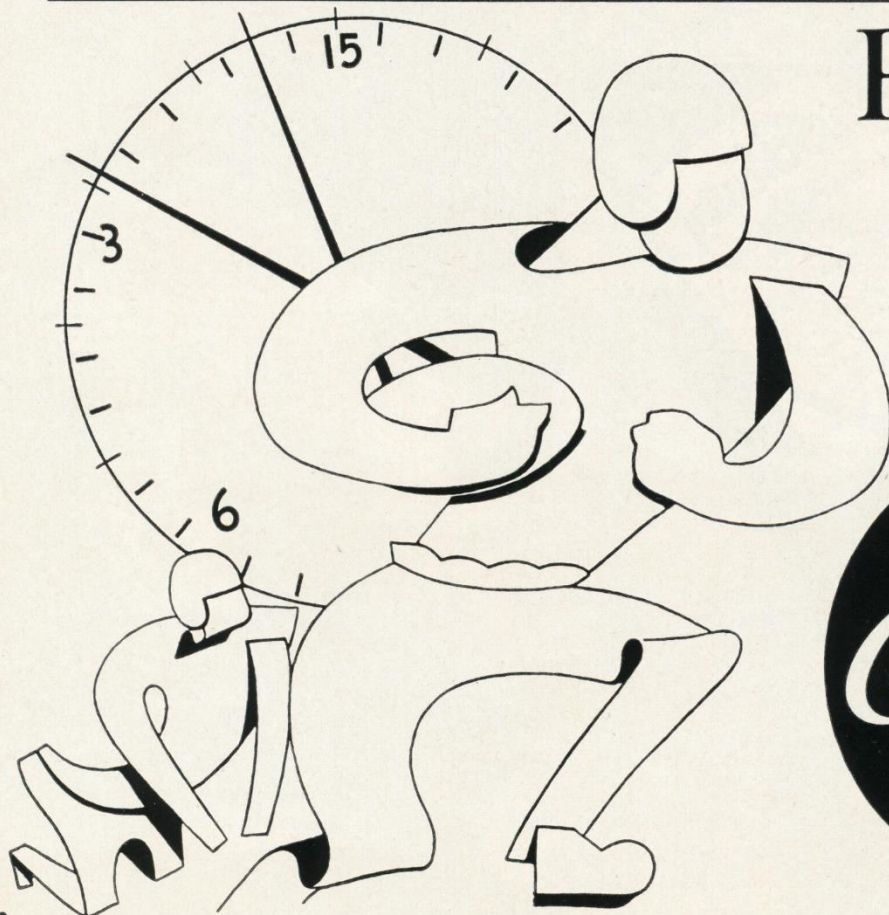


NORM WILLEY

nial all-league selection, and **Wayne Robinson (52)**.

In Philadelphia's defensive set-up four "tackles" play in the middle of the line. Reading from left to right, they are **Jim Weatherall**, **Jess Richardson**, **Marion Campbell** and **Sid Youngelman**, a Brooklyn boy.

It's hard to know what's going to develop in any NFL game but the Eagles have what it takes to make a contest against any foe.



Pause... Refresh



AFTER THE GAME SEE FOR YOURSELF

Clearly finer in the bottle...

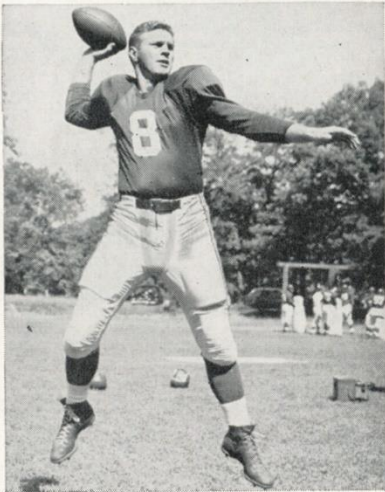
Clearly finer to your taste!

Schenley Elegance



SCHENLEY DISTILLERS CO., N. Y. C. BLENDED WHISKEY, 86 PROOF. 65% GRAIN NEUTRAL SPIRITS.

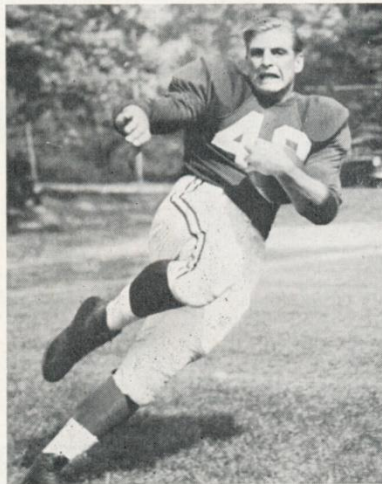
Cardinals Here on Nov. 11



LAMAR McHAN

The Chicago Cardinals, surprise team of the NFL to date on the strength of victories over the Browns, Giants and Redskins in their first three games, will be the next visitor to Yankee Stadium. They fly in to town to meet the Giants two weeks hence.

With them they will bring possibly the fastest group of backs in all of football. Heading their contingents of speedboys is big Ollie Matson. The 1952 Olympic sprint-

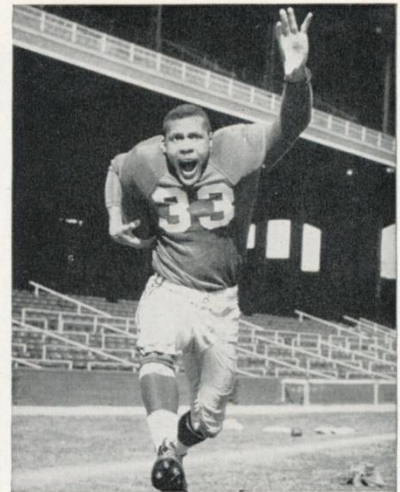


JOHN OLSZEWSKI

er was the NFL's top ground-gainer at last look.

Matson's supporting cast includes Alex Burl, a rookie from Colorado A. and M., who has run the 100 in 9.4 seconds, and Frank Bernardi, another whirlwind first-year runner from Colorado.

The Cardinals have power as well as speed, with Johnny Olzewski and Joe Childress, the 1955 All-America from Auburn, at full-back. Also, their passing game is



OLLIE MATSON

much improved, Lamar McHan, a single wing tailback at Arkansas, at last having mastered the intricacies of T-formation.

Among the other stars of the Chicago Southsiders are Don Stonesifer, a time-tested pass-receiver, and Dick (Night Train) Lane, a crack pass defender.

There wasn't a dull moment in the 35-27 Chicago game between the Cardinals and Giants. The outlook is for another wild and woolly thriller here two weeks hence.

Coming Giant Attractions at Stadium

GAME
3
NOV. 11

**CHICAGO
CARDINALS**

TICKET
PRICES:

\$5.00

**BOX
SEATS**

\$4.00

**RESERVED
SEATS**

Here's Where to Buy Tickets in Person

JOHN JARRELL, Inc.
518 Fifth Ave.
New York, N. Y.
Mon.-Sat., 9-5

YANKEE STADIUM
161st St. and River Ave.
Bronx, N. Y.
Mon.-Sat., 9-5

OR

DAVEGA STORES

Jamaica—163-24 Jamaica Avenue
Hempstead—45 Main Street

Hackensack—325 Main Street
White Plains—175 Main Street

Newark—110 Market Street

OTHER OUTLETS

ENGLEWOOD SPORTS SHOP, 31 East Palisade Ave., Englewood, N. J.
ED AND ANDY'S SPORTS SHOP, Stamford, Conn.

GAME
5
DEC. 2

**WASHINGTON
REDSKINS**

GAME
6
DEC. 9

**CLEVELAND
BROWNS**

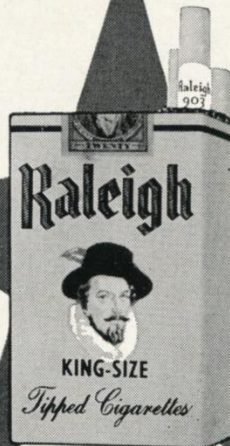
ADDRESS ALL
MAIL ORDERS TO:

TICKET MANAGER
NEW YORK FOOTBALL GIANTS
11 West 42nd Street
New York 36, N. Y.

(Add 35c for mailing and handling).

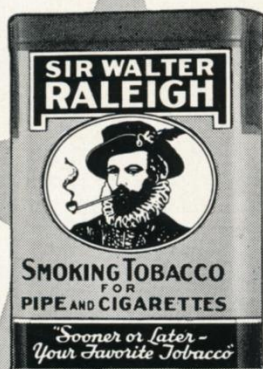
Make check or money order payable: NEW YORK FOOTBALL GIANTS, INC.

Tickets Now on Sale at Advance Sale Windows in Main Lobby



All-Stars

FROM
Brown & Williamson Tobacco Corp.



Giant Jottings

Charley Conerly bagged two trophies for his brilliant efforts in last Sunday's 38-10 victory over the Pittsburgh Steelers. Chucking Charley received the Jewish Consumptive Relief Society Trophy as the game's outstanding performer and also carried off the weekly Longines award as the top Giant on offense. . . . Sam Huff, the rookie middle guard from West Virginia, won the Longines defensive award.

Gene Filipski's spectacular debut as an offensive halfback against the Steelers pleased the Giants no end because Jack Mara went to all kinds of trouble to track down the former Army and Villanova star after his release by the Cleveland Browns. The Giant prexy finally collared Gene in San Francisco after missing connections with him in Cleveland, Philadelphia and Calgary, Ont. Off what he showed against Pittsburgh, Filipski will get plenty of work as a relief for Frank Gifford and Alex Webster.

The Irvington, N. J., High School band will provide pre-game and between-halves entertainment today. This well-drilled marching and playing unit, which is directed by Marlo Brinser, has played at Giant games before and never has failed to make a big hit. . . . Incidentally, that was a cute touch by the Hempstead High School band last Sunday in making a prominent display of umbrellas in their "spectaculars." The Long Islanders were rained out twice in scheduled appearances before Giant crowds last year.

Attention, automobile drivers: In addition to the numerous parking lots in the immediate vicinity of Yankee Stadium, the Polo Grounds lots will be in operation for all Giant home games. It's only a short walk from the Polo Grounds to the Stadium, or a one-stop ride on the IND Sixth Avenue subway's D train.

Have you ever seen two halfbacks who run lower or cut quicker than the Giants' Frank Gifford and Alex Webster? . . . Football technicians admire the Giants' skillful execution of the "ride" series (call it the "belly" or "drive" series, if you prefer). This sequence is built around a prolonged quarterback fake to the fullback. Sometimes the fullback keeps the ball, sometimes the quarterback plucks it back out of the fullback's middle and delivers it to a trailing halfback and sometimes, after faking delivery to a halfback, the quarterback will drop back to pass as Conerly did twice for touchdowns last Sunday. It's all very confusing to the opposition.

Giant Parking Facilities

STADIUM PARKING LOTS

South side 157th St., Ruppert Pl. to Cromwell Ave.
Between Cromwell and River Aves., on 153rd St.
163rd to 164th Sts., between River and Gerard Aves.
151st St. and River Ave., opposite Bronx County Jail.

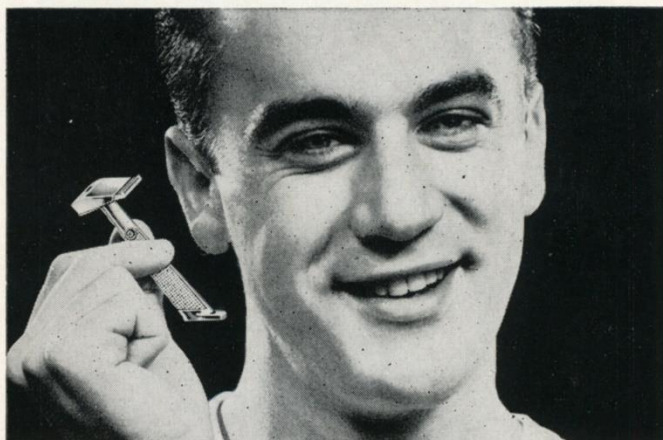
PRIVATELY OWNED PARKING LOTS

West side Ruppert Pl., between 157th and 158th Sts.
West side River Ave., between 151st and 153rd Sts.
West side River Ave., and 157th St.
East side River Ave., North of 153rd St.
East side River Ave., North 151st St.
East side River Ave., 164th to 165th Sts.
East side River Ave., South of 162nd St.

GARAGES

Cromwell Ave. and 157th St.
East side of River Ave., South side of 158th St.
East side of River Ave., North side of 157th St.
East side of River Ave., South side of 157th St.
North side of 158th St., between River and Gerard Aves.

Greatest thing that's happened to men...since women!

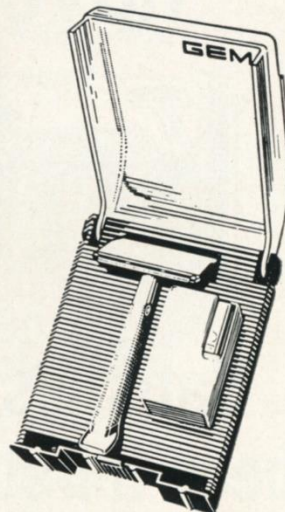


IT'S THE HEAVY, ALL-METAL **NEW GEM RAZOR** WITH FLAT-TOP DESIGN THAT HUGS YOUR CHEEK

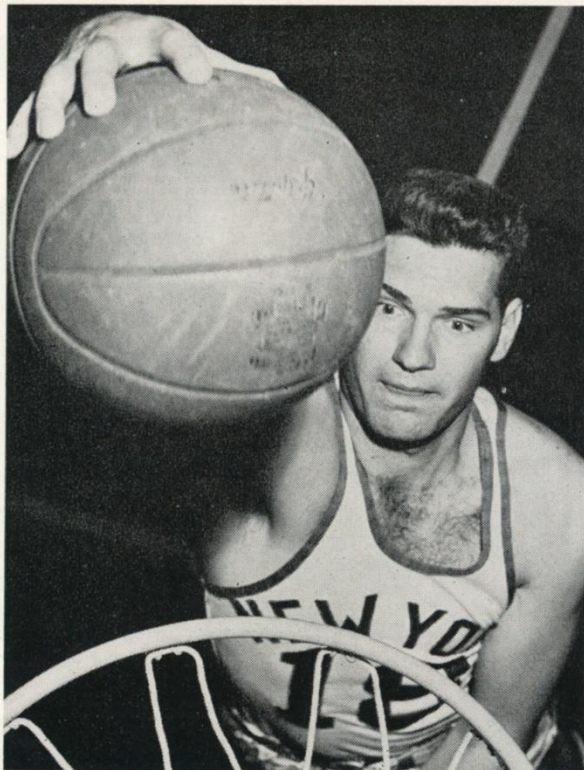


AND ALWAYS HOLDS THE BLADE AT THE PERFECT ANGLE FOR A CLOSE, CLEAN SHAVE WITHOUT IRRITATION!

NEW GEM RAZOR WITH FLAT-TOP DESIGN



ONLY
\$1.00 WITH DISPENSER OF GEM BLADES
AND TRAVEL CASE



GARY BERGEN

**Professional Basketball
MADISON SQUARE GARDEN**

Sunday Night, Nov. 11

**1955-56 Champion
PHILADELPHIA WARRIORS
vs.
NEW YORK KNICKS
and
ROCHESTER ROYALS
vs.
MINNEAPOLIS LAKERS**

FIRST GAME: 7:15 P.M.

This Doubleheader Will Not Be Televised

PRICES: \$4.50, \$4, \$3, \$2.50, \$2, \$1

Tickets on sale at Madison Square Garden box office. Mail orders promptly filled. Write Basketball Dept., Madison Square Garden, 307 West 49th St. Add 25 cents for handling and mailing.

THIRSTY?

have a

Knick

**Satisfies your
beer thirst better**

Ruppert Knickerbocker Beer, Jacob Ruppert, N. Y. C.



Knickerbocker

New York's Famous Beer

Scouting Around . . .

with Jack Lavelle



HAVE you run across the football term "slot T" yet? Well, if you haven't, you probably will soon, because it's making the rounds pretty good in the Mid-western provinces. So, to add to the confusion, I'll attempt to tell you what it's all about. "Slot T"

is nothing more than a new name for an old T formation variation. It involves sending an end out as a flanker and placing a halfback inside of him, in the "slot." Normal procedure in setting flankers is to have the halfback outside the end.

The Chicago Bears have been using the "slot T" for years and this season the Steelers, Eagles and Packers have taken it up. It's a good passing formation for teams that have a spare fast end. You may have noticed that the Steelers used Elbie Nickel, normally an end, as their "slot" halfback last Sunday. Check the Eagles today and you'll probably see John Bredice, Philadelphia's good rookie end, there a lot of the time, too.

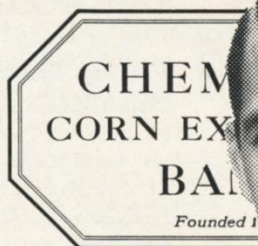
A lot of people have been asking such questions about the Cardinals as "Are they really that good?" and "Will they stay up there?" The answers are "Yes" and "Maybe." I have to hedge on the second question because in this league anything can happen and usually does. But I will say this: it's no accident the Cardinals are up there and it's not going to be easy to knock them down. That big Ollie Matson kills you and Lamar McHan has come along to give them a passing threat to support their running game.

The Cardinals have three good new backs in Alex Burl, Frank Bernardi and Joe Childress. Johnny Olszewski has had to play better than ever before to keep Childress out of the starting line-up. They also have an unsung hero in Gern Nagler. He hasn't cracked the headlines much but, in my book, he's one of the real good ends in the league. Don't kid yourself. The Cards have a lot of talent and, what's more, they believe in themselves.

For what they're worth, here are some random observations about the league in general: For the fifth or sixth year in a row, there's better balance than ever before. There's no such thing as a patsy any more. . . . The Packers, as far as they can go, are as good as any team in the league. . . . Perry Jeter of the Bears is a rookie back who's going to go far in this game. . . . Cleveland's Lou Groza was a better place-kicker when he had Otto Graham to spot the ball for him. . . . Buddy Parker really has the Lions fired up this season. If there ever was "a team called desire" Detroit is it.

TODAY'S SELECTIONS—I called five out of five last week (you'll pardon the typographical errors on the Eagles-Cardinals and Redskins-Browns games; the printer couldn't read my handwriting). So here we go again. . . . Redskins over Cardinals (and after that big build-up for the Cardinals, too); Steelers over Browns; Lions over Rams; Bears over Forty-Niners and Packers over Colts.

Super-Scout Jack Lavelle files his confidential report in this space each week.



Knowing New Yorkers SAVE Where They Can BORROW When They Need To

Chemical Corn Exchange Bank fulfills every banking need (personal loans, auto loans, home improvement loans, special and regular checking accounts are just a few). Chemical offices are conveniently located in all 5 boroughs of New York. In addition, Chemical pays 2½% interest a year—compounded every 3 months—on savings deposits from \$10 to \$25,000.

See phone book for office
nearest you



THE BANK THAT'S

*Near You
in Greater New York*

Member Federal Deposit Insurance Corporation

Today's National League Pairings

Home Team	Visiting Team
NEW YORK	PHILADELPHIA
<i>Won 3, Lost 1, Tied 0</i>	<i>Won 2, Lost 2, Tied 0</i>
38—San Francisco (a)..... 21	7—Los Angeles (a)..... 27
27—Chicago Cards (a)..... 35	13—Washington..... 9
21—Cleveland (a)..... 9	35—Pittsburgh (a)..... 21
38—Pittsburgh..... 10	6—Chicago Cards..... 20
—Philadelphia.....	—New York (a).....
—Pittsburgh (a).....	—Chicago Cards (a).....
—Chicago Cards.....	—Pittsburgh.....
—Washington (a).....	—Cleveland.....
—Chicago Bears.....	—San Francisco.....
—Washington.....	—Cleveland (a).....
—Cleveland.....	—Washington (a).....
—Philadelphia (a).....	—New York.....
124	75 61 77

Home Team	Visiting Team
LOS ANGELES	DETROIT
<i>Won 1, Lost 3, Tied 0</i>	<i>Won 4, Lost 0, Tied 0</i>
27—Philadelphia..... 7	20—Green Bay (a)..... 16
30—San Francisco (a)..... 33	31—Baltimore (a)..... 14
21—Detroit (a)..... 24	24—Los Angeles..... 21
17—Green Bay (a)..... 42	20—San Francisco..... 17
—Detroit.....	—Los Angeles (a).....
—Chicago Bears.....	—San Francisco (a).....
—San Francisco.....	—Washington (a).....
—Chicago Bears (a).....	—Baltimore.....
—Baltimore (a).....	—Green Bay.....
—Pittsburgh (a).....	—Chicago Bears.....
—Baltimore.....	—Pittsburgh.....
—Green Bay.....	—Chicago Bears (a).....
95	106 95 68

CHICAGO CARDS	WASHINGTON
<i>Won 4, Lost 0, Tied 0</i>	<i>Won 1, Lost 3, Tied 0</i>
9—Cleveland..... 7	13—Pittsburgh (a)..... 30
35—New York..... 27	9—Philadelphia (a)..... 13
31—Washington (a)..... 3	3—Chicago Cards..... 31
20—Philadelphia (a)..... 6	20—Cleveland..... 9
—Washington.....	—Chicago Cards (a).....
—Philadelphia.....	—Detroit.....
—New York (a).....	—New York.....
—Pittsburgh (a).....	—Cleveland (a).....
—Pittsburgh.....	—New York (a).....
—Green Bay.....	—Philadelphia.....
—Chicago Bears (a).....	—Pittsburgh.....
—Cleveland (a).....	—Baltimore (a).....
95	43 45 83

SAN FRANCISCO	CHICAGO BEARS
<i>Won 1, Lost 3, Tied 0</i>	<i>Won 3, Lost 1, Tied 0</i>
21—New York..... 38	21—Baltimore (a)..... 28
33—Los Angeles..... 30	37—Green Bay (a)..... 21
7—Chicago Bears (a)..... 31	31—San Francisco..... 7
17—Detroit (a)..... 20	58—Baltimore..... 27
—Chicago Bears.....	—San Francisco (a).....
—Detroit.....	—Los Angeles (a).....
—Los Angeles (a).....	—Green Bay.....
—Green Bay (a).....	—Los Angeles.....
—Philadelphia (a).....	—New York (a).....
—Baltimore (a).....	—Detroit (a).....
—Green Bay.....	—Chicago Cards.....
—Baltimore.....	—Detroit.....
78	119 147 83

CLEVELAND	PITTSBURGH
<i>Won 1, Lost 3, Tied 0</i>	<i>Won 1, Lost 3, Tied 0</i>
7—Chicago Cards (a)..... 9	30—Washington..... 13
14—Pittsburgh (a)..... 10	10—Cleveland..... 14
9—New York..... 21	21—Philadelphia..... 35
9—Washington (a)..... 20	10—New York (a)..... 38
—Pittsburgh.....	—Cleveland (a).....
—Green Bay (a).....	—New York.....
—Baltimore.....	—Philadelphia (a).....
—Philadelphia (a).....	—Chicago Cards.....
—Washington.....	—Chicago Cards (a).....
—Philadelphia.....	—Los Angeles.....
—New York (a).....	—Detroit (a).....
—Chicago Cards.....	—Washington (a).....
39	60 71 100

BALTIMORE	GREEN BAY
<i>Won 1, Lost 3, Tied 0</i>	<i>Won 2, Lost 2, Tied 0</i>
28—Chicago Bears..... 21	16—Detroit..... 20
14—Detroit..... 31	21—Chicago Bears..... 37
33—Green Bay (a)..... 38	38—Baltimore..... 33
27—Chicago Bears (a)..... 58	42—Los Angeles..... 17
—Green Bay.....	—Baltimore (a).....
—Cleveland (a).....	—Cleveland.....
—Detroit (a).....	—Chicago Bears (a).....
—Los Angeles.....	—San Francisco.....
—San Francisco.....	—Detroit (a).....
—Los Angeles (a).....	—Chicago Cards (a).....
—San Francisco (a).....	—San Francisco (a).....
—Washington.....	—Los Angeles (a).....
102	148 117 107

NATIONAL LEAGUE LEADERS

RUSHING

1. Casares, Chicago Bears.....76 for 401 yds.
2. Matson, Chicago Cards.....66 for 372 yds.
3. McElhenny, San Francisco.....64 for 345 yds.

PASSING

1. Brown, Chicago Bears.....35 of 52 for 569 yds.
2. McHan, Chicago Cards.....16 of 33 for 313 yds.
3. Wade, Los Angeles.....44 of 83 for 759 yds.

PASS-RECEIVING

1. Howton, Green Bay.....22 for 516 yds.
2. GIFFORD, NEW YORK.....20 for 239 yds.
3. Walston, Philadelphia.....16 for 289 yds.

SCORING

1. Lane, Detroit.....38 pts.
2. TRIPLETT, NEW YORK.....36 pts.
3. Casares, Chicago Bears.....36 pts.

NATIONAL LEAGUE STANDINGS

EASTERN CONFERENCE

	W.	L.	T.	Pct.	Points For	Agst.
Chicago Cards.....	4	0	0	1.000	95	43
NEW YORK.....	3	1	0	.750	124	75
Philadelphia.....	2	2	0	.500	61	77
Pittsburgh.....	1	3	0	.250	71	100
Cleveland.....	1	3	0	.250	39	60
Washington.....	1	3	0	.250	45	83

WESTERN CONFERENCE

	W.	L.	T.	Pct.	Points For	Agst.
Detroit.....	4	0	0	1.000	95	68
Chicago Bears.....	3	1	0	.750	147	83
Green Bay.....	2	2	0	.500	117	107
Baltimore.....	1	3	0	.250	102	148
San Francisco.....	1	3	0	.250	78	119
Los Angeles.....	1	3	0	.250	95	106

PLEASE USE ENTRANCE RAMP NEAREST YOUR SEAT

SITTING PRETTY



*"My master
prefers
Melrose"*

If pleasure is your goal, put Melrose Rare in your drink and you'll really be sitting pretty with "the very best"! What makes Melrose so *Rare*? It's mellowed with superb whiskies seven years old...*more, older, finer* whiskies than any leading blend!

There's nothing to compare with

MELROSE

RARE



NATIONAL LEAGUE LEADERS

Rushing.....	Casares, Bears.....	76 for 401 yds.
Passing.....	Brown, Bears.....	35 of 52 for 569 yds.
Pass-Receiving.....	Howton, Green Bay.....	22 for 516 yds.
Scoring.....	Lane, Detroit.....	38 pts.
Punting.....	Burk, Philadelphia.....	45.4-yd. avg.
Punt Returns.....	Taseff, Baltimore.....	9 for 192 yds.
Kick-Off Returns.....	Matson, Cardinals.....	5 for 191 yds.
Interceptions.....	Lane, Cardinals.....	4 for 139 yds.



BLENDED WHISKEY, 90 PROOF. 40% STRAIGHT WHISKIES, 60% GRAIN NEUTRAL SPIRITS. MELROSE DISTILLERS COMPANY, NEW YORK

LIKE YOUR PLEASURE **BIG?**



FAINT PLEASURE AIN'T PLEASURE!
IF YOU SMOKE **FOR REAL** SMOKE **CHESTERFIELD!**
MORE **REAL FULL FLAVOR**, SATISFACTION TOO...
THIS ALL-OUT SMOKE DOES MORE FOR YOU!
PACKED **MORE SMOOTHLY BY ACCU-RAY**,
IT'S **THE SMOOTHEST TASTING SMOKE** TODAY!



©Liggett & Myers Tobacco Co.

SMOKE FOR REAL...
SMOKE CHESTERFIELD