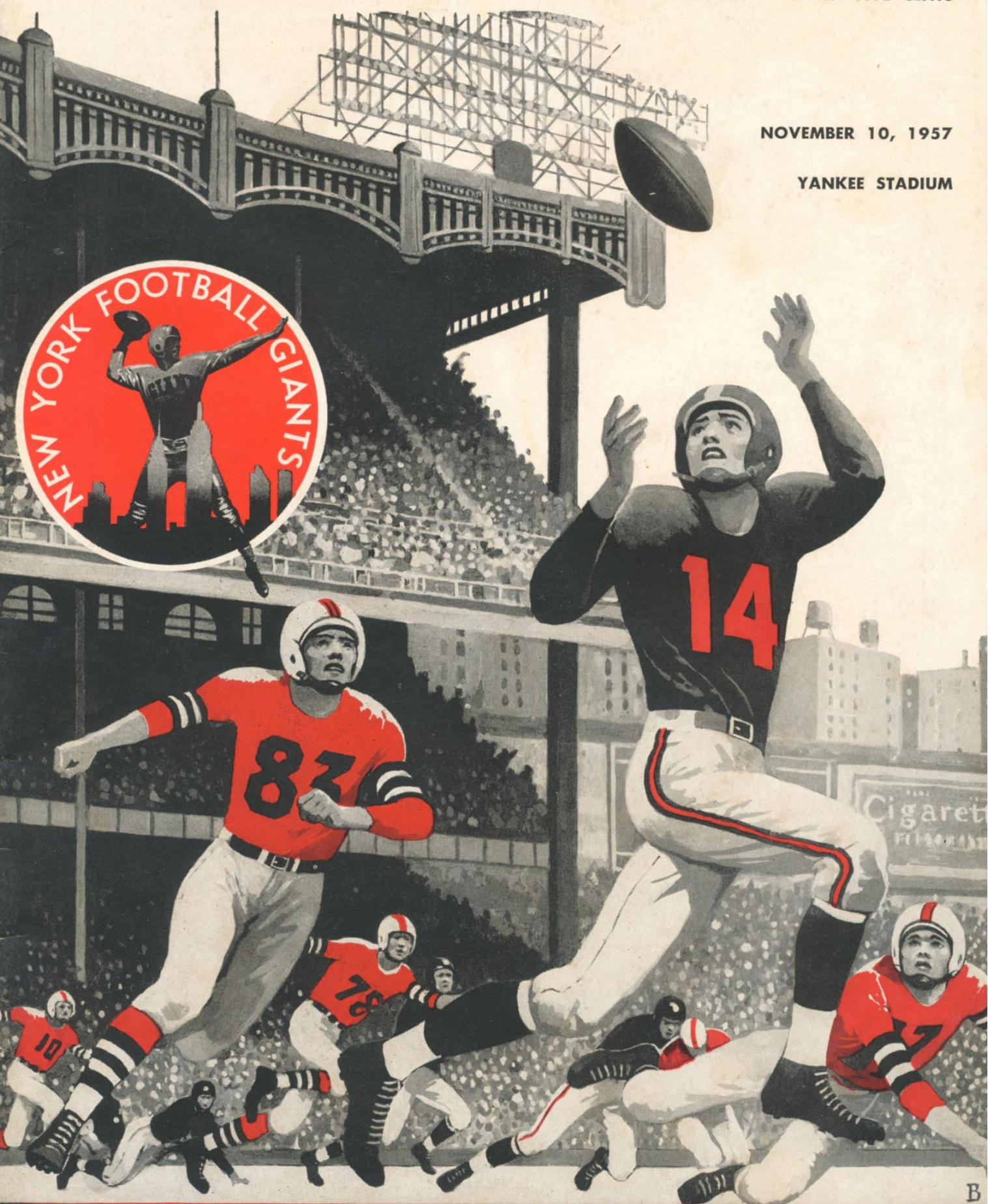


NOVEMBER 10, 1957

YANKEE STADIUM



# GIANTS vs. CARDINALS



# Quality



*Products of*

*The American Tobacco Company*

*"Tobacco IS OUR MIDDLE NAME"*





Confound it, man,  
I asked for  
**Canada Dry!**



*A Mixer for Every Taste*

GINGER ALE  
CLUB SODA  
QUININE WATER



*Longines*

THE WORLD'S MOST HONORED WATCH

OFFICIAL WATCH FOR THE  
**GIANTS-CARDS  
FOOTBALL GAME**

Longines, first watch of sport, is recognized as official for timing world records and international events by all international sports and contest associations. Every Longines watch, for whatever its use, is made to be the best of its kind. For yourself, as a gift, no other name on a watch means so much as Longines, the world's most honored watch.

*Longines-Wittnauer Watch Company*



10 WORLD'S FAIR  
GRAND PRIZES  
28 GOLD MEDALS



Longines self-winding watches to cope with outdoor life—fully protected against all common watch hazards. For her—Longines Skylark Automatic, \$92.50. For him—Longines All-Guard Automatic, \$99.50. Other Longines watches from \$71.50.

OFFICIAL WATCH FOR



U. S. OLYMPIC COMMITTEE  
1948-1952-1956



NAT'L AERONAUTIC ASSN.



NAT'L COLLEGIATE ATHLETIC  
ASSN. CHAMPIONSHIPS



NATIONAL SKI ASSN.



AMERICAN  
POWERBOAT ASSN.



AAU CHAMPIONSHIPS  
AND MANY OTHERS



NATIONAL HORSE  
SHOW ASSN.



# League Leaders

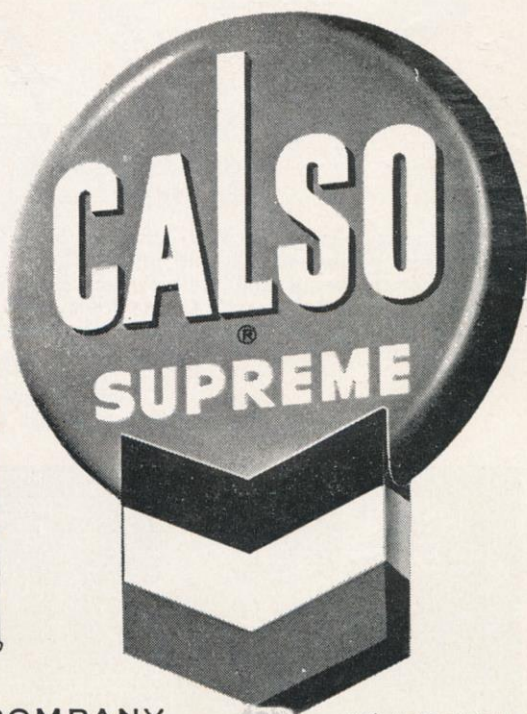
## CALSO SUPREME

# 300-PLUS

Today's Gasoline  
for Today's Horsepower

## RPM Supreme Motor Oil

—the motor oil that  
halts engine wear!



PRODUCTS OF THE CALIFORNIA OIL COMPANY

TM'S "CALSO," "RPM" AND  
CHEVRON DESIGN®



## GIANTS AT STADIUM

Nov. 10.....Chicago Cardinals

Nov. 17.....Philadelphia Eagles

Dec. 1.....San Francisco '49ers

Dec. 15.....Cleveland Browns

*Kick-Off Time—2:05 P.M.*



GIANT LEADERS: Coach Jim Lee Howell with Captains Kyle Rote and Bill Svoboda.

# The Best Offense . . .

**T**ODAY'S game with the Cardinals sends the Giants into the second half of their schedule. Coach Jim Lee Howell's world champions reached the midpoint of the race with a 4-2 won-lost record that puts them very much in the running for another National League title.

That they have done so well against the intensified opposition of what all experts agree is the "best league ever" and in the face of a series of harassing injuries to key personnel reflects high credit on the Giants as a team.

In a lot of ways, this has been a rough season on the Giants. They haven't had the use of Don Heinrich, normally their starting

quarterback, for the last five games. Mel Triplett, whose blocking and plunging from fullback means so much to the attack, missed a couple of games.

Injuries and illness have taken a heavy toll of the offensive line, also. In every game, one or more forwards have been out of action. At various times, Tom Yelvington, Jack Stroud, Ken MacAfee and Jack Spinks have been drydocked.

Fortunately, Charlie Conerly has done a tremendous job of keeping the attack rolling. Bobby Epps provided stalwart relief service at fullback. Fellows like Stroud, before he was hurt, Bill Austin, Walt Yowarsky and Bob

Schnelker pitched in to plug the gaps up front.

However, the offensive platooners would be the first to point out that their colleagues of the defensive unit deserve at least equal credit for keeping the Giants in the race.

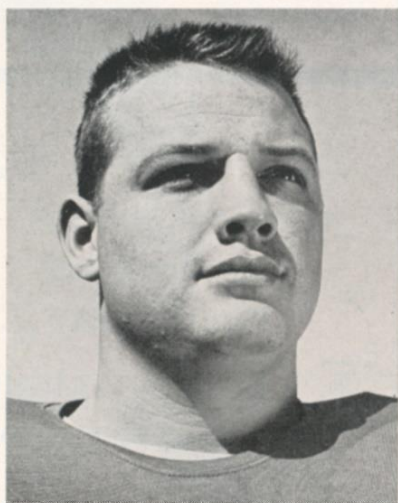
At Green Bay last Sunday, as you undoubtedly observed on your TV screen, the Giant defensive platooners had another big day.

Yes, they did get caught in the switches a couple of times on Packer long-gainers. But Bill Svoboda and his wrecking crew provided the two touchdowns that constituted the 31-17 Giant margin of victory and saved the day with a classic goal line stand.

Awarded the ball on the Giant 1-yard line on a pass-interference penalty in the end zone, the Packers could not gain an inch in four thrusts at the Giant line. If they had been able to put it across the score would have been tied. It was truly one of the memorable moments of the season.

To make it even a redder-letter day, two members of the defensive unit wrote their names into the scoring summary. Sam Huff pounced on a Packer punt blocked by Cliff Livingston for a touchdown and Em Tunnell, reviving a happy old custom, picked off a Packer pass and returned it 52 yards for the lock-up tally.

So, once again, hat's off to the defensive platoon!



SAM HUFF



EM TUNNELL

*This book is published by HARRY M. STEVENS, Inc., 320 Fifth Avenue, New York 1, N. Y.*

**PLEASE USE ENTRANCE RAMP NEAREST YOUR SEAT**



*For Better Looks*  
**MEN...**

*Better Look for*  
**MENNEN!**



**MENNEN  
Spray Deodorant  
For Men**

No. 1 seller gives round-the-clock protection.

60¢\* \$1.00\*



**MENNEN  
Skin Bracer**

More men personally chose this than any other.

30¢\* 60¢\* \$1.00\*



**MENNEN  
Bath Talc For Men**

Bath-fresh comfort and protection. Contains a full-fledged deodorant.

60¢\*



**MENNEN  
Foam Shave**

Smoother shaves with Special Menthol Formula.

79¢



**MENNEN  
4 great shave creams...**

lather 60¢  
lather with menthol 40¢ 60¢  
brushless 35¢ 55¢  
brushless with menthol 55¢



**MENNEN AFTA**

No-sting, non-alcoholic after shave lotion... soothes and conditions.

1.00\*



**MENNEN  
Shave Talc**

Regular or electric shave—ideal before or after... neutral tint doesn't show.

35¢\*



**MENNEN  
Electric Pre-Shave**

For closer, cleaner shaves. Reduces shaver friction... cools with menthol.

75¢



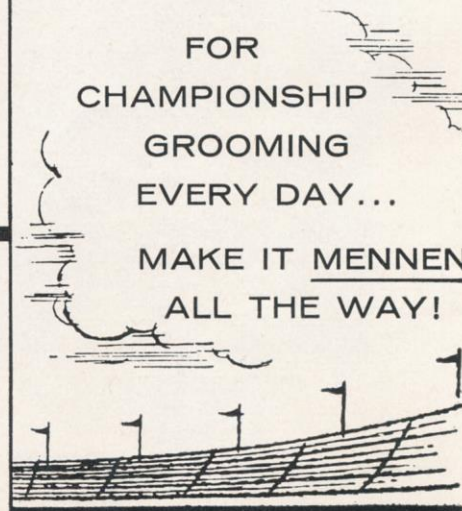
FOR  
CHAMPIONSHIP  
GROOMING  
EVERY DAY...

MAKE IT MENNEN  
ALL THE WAY!

Look for this world-famous line-up  
of good grooming products by

**MENNEN**

GREATEST NAME IN GOOD GROOMING SINCE 1879



\*Plus Fed. Tax



# *“Foot” Is the First Part of the Name of This Game*

ONE of the things that has sold so many people on pro football is the marvelous proficiency of the game's specialists.

Pro passers hit receivers in the eye—and can specify which eye—up to 50 yards. Pro receivers catch anything they can get their hands on and most need to get only one hand on the ball to tuck it away.

However, the specialties that the pros have developed to the highest degree are the kicking arts.

The point-after-touchdown is made so automatically that some authorities, including Bert Bell, the National Football League commissioner, believe it might profitably be eliminated as a superfluity.

Field goals from any point inside midfield, some times even from beyond, are routine. It's a rare N.F.L. game that doesn't produce at least two or three 3-pointers.

The average N.F.L. kick-off carries to the goal line. Booming drives of 70 yards and more that carry clear out of the end zone occur so frequently as to provoke only a few “ohs and ahs.”



**BEN AGAJANIAN**



**DON CHANDLER**

Punters, from 15 yards behind the scrimmage line in the standard spread formation now used, consistently hoist skyscraping spirals 40 yards or more into enemy ground. Boots angled inside the rival 20-yard line find the “coffin corner” with uncanny accuracy.

The N.F.L. kicking standard is so high that any deficiency is serious, almost fatal.

Fortunately, the Giants have no such problem. Their kicking specialists—Ben Agajanian and Don Chandler—rank with the best.

The 38-year-old Agajanian has been booting extra points and field goals for pay since 1944. His place-kicking efforts—Ben never has scored a touchdown—have established him as the third highest Giant scorer—in just six seasons with the club.

Perhaps the most accurate of all pro kickers up to 35 yards, Bootin' Ben also has good range. He holds the All-American Conference record of 53 yards and set a Giant mark of 50 yards against the Redskins this season.

The nation's top collegiate punter in 1955, Chandler joined the Giants last season and quickly demonstrated his specialist qualifications. One of the most graceful kickers the game has known, he sends his punts soaring amazingly high and far with the merest flick of his powerful right leg.

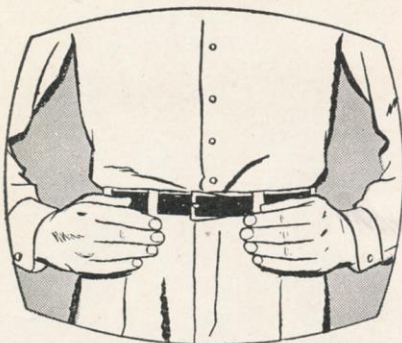
Progressing fast as a place-kicker under Agajanian's tutelage, Don this season also has developed into a tremendous kick-off man.

Coach Jim Lee Howell is happy to have a couple of booters like this in his kick.

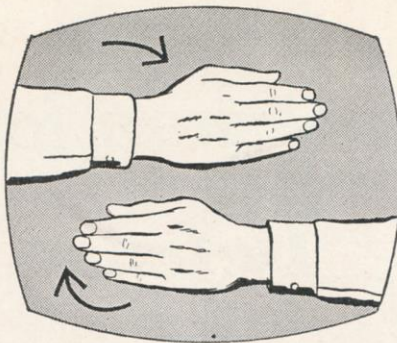
**PLEASE USE ENTRANCE RAMP NEAREST YOUR SEAT**



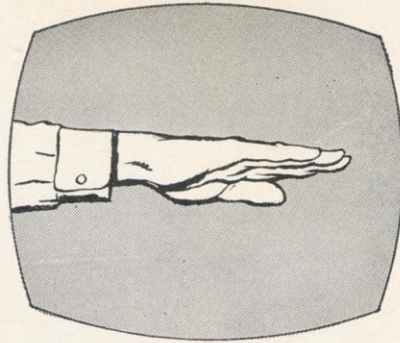
# DO YOU KNOW YOUR SIGNS?



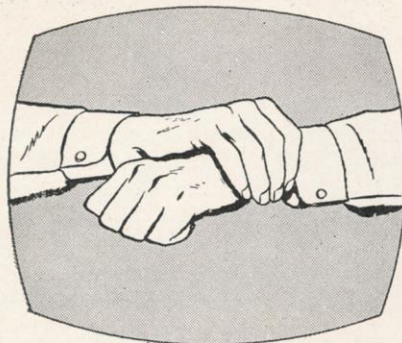
Arms akimbo signal flashed to indicate team off-side.



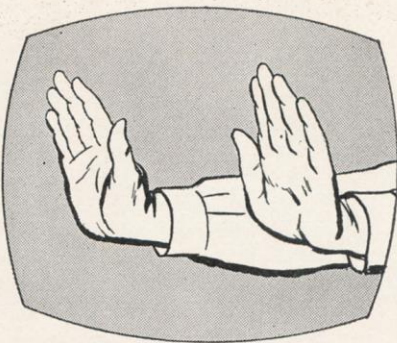
Signal used for illegal position or procedure.



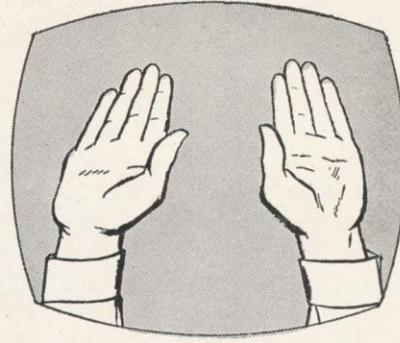
Offensive team charged with illegal motion or shift.



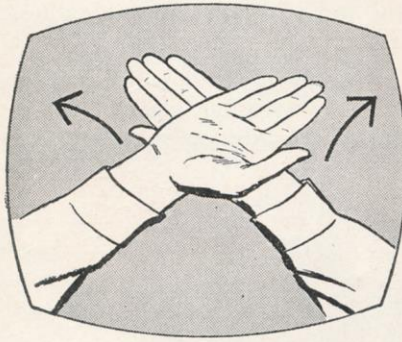
This signal means illegal use of hands or arms.



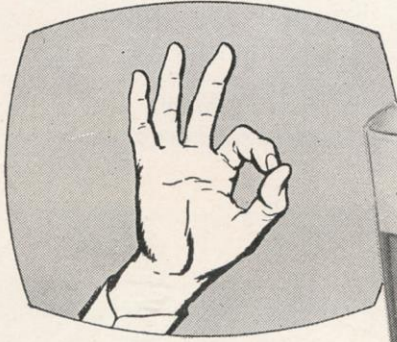
Signal for forward pass or kick catching interference.



Familiar signal for touchdown or field goal.



Team — or official — calls for time out.



Fan calls for Ballantine's famous real beer flavor — the liveliest taste in town!

Ask the man for  
**Ballantine beer**  
 YOU'LL BE SO GLAD YOU DID!



P. BALLANTINE & SONS, NEWARK, N. J.



# Next Sunday, the Eagles!



**BILL BARNES**

The Giants, ambushed by the Redskins' rookie backs in their last Stadium appearance, will have to cope with another prize collection of precocious pros next Sunday.

The Philadelphia Eagles will bring to the Stadium a group of first-year backs that experts rate every bit as highly as the rampant young Redskins who impressed so highly here.

Coach Hughey Devore has been starting three rookies in his backfield. Sonny Jurgensen, of Duke

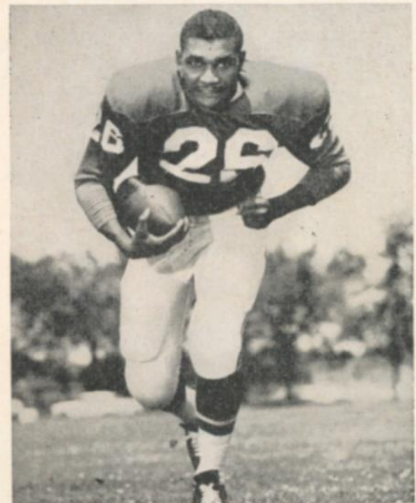


**SONNY JURGENSEN**

fame, has wrested the quarterback post from Bobby Thomason, one of football's fine old pros, and Al Dorow, another experienced hand.

Bill Barnes, the "sleeper" All-America from Wake Forest who gave the Giants fits in the Chicago All-Star game, is their starting left halfback. At fullback, they have installed the fleet and powerful Clarence (Hi) Peaks, from Michigan State.

Supporting Barnes, performing kick-return chores and other odd jobs is another of 1956's great college players, Tommy McDonald, the sparkplug of Oklahoma's unbeaten national champions.



**CLARENCE PEAKS**

Other newcomers who have made the grade are Jimmy Harris, another flashy Oklahoma back, now playing defense; John Simeron, 254-pound offensive center from Purdue, and Tom Saidock, 260-pound defensive tackle from Michigan State.

These talented new players, plus 1956 and 1955 additions to the old hard core that still includes Chuck Bednarik, Tom Scott, Norm Willey, Frank Wydo and Bobby Wals-ton stamps the Eagles as a rising force in the Eastern Division.

## Coming Giant Attractions at Stadium

<p>GAME <b>4</b> NOV. 17</p>	<p><b>PHILADELPHIA EAGLES</b></p>	<p>TICKET PRICES: <b>\$5.00</b> <i>BOX SEATS</i></p>	<p><b>\$4.00</b> <i>RESERVED SEATS</i></p>
<p>GAME <b>5</b> DEC. 1</p>	<p><b>SAN FRANCISCO FORTY-NINERS</b></p>	<p><i>Here's Where to Buy Tickets in Person</i></p> <div> <div> <p><b>YANKEE STADIUM</b> 161st St. and River Ave. Bronx, N. Y. Mon.-Sat., 9-5 P.M.</p> </div> <div> <p><b>YANKEE TICKET OFFICE</b> North Mezzanine Grand Central Station Mon.-Fri., 10-6 P.M.; Sat., 10-4</p> </div> </div> <p>OR</p> <div> <p><b>DAVEGA STORES</b></p> <p>Jamaica—163-24 Jamaica Avenue      Hackensack—325 Main Street Hempstead—45 Main Street      White Plains—175 Main Street Newark—110 Market Street</p> </div> <p><b>OTHER OUTLETS</b> <b>ANDY ROBUSTELLI'S SPORTS SHOPS</b> in Stamford and Cos Cob, Conn.</p>	
<p>GAME <b>6</b> DEC. 15</p>	<p><b>CLEVELAND BROWNS</b></p>	<p><b>ADDRESS ALL MAIL ORDERS TO:</b> <b>TICKET MANAGER</b> <b>NEW YORK FOOTBALL GIANTS</b> 10 Columbus Circle New York 19, N. Y.</p> <p>(Add 50c for mailing and handling)</p>	

*Make check or money order payable: NEW YORK FOOTBALL GIANTS, INC.*

***Tickets Now on Sale at Advance Sale Windows in Main Lobby***



MM-M-M—  
LOVE THAT FLAVOR!



# HAVE A REAL CIGARETTE— HAVE A Camel



Discover the difference between  
“just smoking”... and Camels!

No fads or fancy stuff in this cigarette—simply the finest taste in smoking. The exclusive Camel blend of quality tobaccos has never been equalled for *smooth* smoking. Try the good, rich flavor of Camels, the largest-selling cigarette today. They've really got it!

R. J. Reynolds Tobacco Company, Winston-Salem, N. C.



# BOY FROM BIPPUS . . . . Chris Schenkel

A LUST for travel has stirred Sportscaster Chris Schenkel most of his life. This is not surprising when you consider that home, to Chris Schenkel, is Bippus, Ind., a teeming metropolis of 300 which lies almost hidden amid the tall corn some 30 miles southeast of Fort Wayne.

Four older brothers and sisters already had done all there was to do in Bippus. Chris' father, Philip, furthermore, was the Rockefeller of the place.

At 12, Chris decided he would have to move on. With six-year-old brother Phil, he worked up a musical act—Chris playing guitar and Phil the mandolin—and the two baby-faced minstrels commenced to tour the Midwest.

By the time he was 15, Chris had taken up oratory and he soon decided that this new dodge was more reliable than twanging a guitar. His imagination was stirred by Ted Husing. "I remember thinking that sportscasting must be a great way to make a living," he recalls.

A Bippus basketball tourney



CHRIS SCHENKEL

was sold out. Chris induced a representative of the telephone company to rig amplifiers to the bank, barber shop and drug store phones with Chris "broadcasting" play by play from the gym. This was his first "network" show.

Meanwhile, young Chris had won a number of oratorical contests, one of which provided a scholarship to Purdue. He ma-

jored in speech and got practical experience on the University station—"everything from Big Ten games on down."

In 1943 he entered the Army. Since he had learned German from his parents, he was sent to the University of Pittsburgh to master a third language, the purpose being to fit him for intelligence work in Europe.

At Pitt, signals got crossed and he was made to attend classes in—you guessed it—German. And, after two semesters of intelligence courses, he was sent to the Philippines as an infantry officer. He was in combat four months. Asked did he shoot anyone, he replies: "I don't know. I imagine so."

After discharge, he got work in Pawtucket, R. I., and broadcast Harvard and Boston College football games and local horse racing. But his eyes were on New York all the time. In 1956 he won an audition over 60 others as color announcer for the giants.

The fee would be \$100 a game for 12 games. Chris deliberated

(Continued on page 17)



HARRY GALLATIN, Detroit Pistons

## Pro Basketball Madison Square Garden

This Saturday Night

### DETROIT PISTONS

(With ex-Knicks Harry Gallatin, Dick McGuire, Walt Dukes and Nat Clifton, plus George Yardley)

vs.

### NEW YORK KNICKS

(Carl Braun, Willie Naulls, Mel Hutchins, Kenny Sears, Charlie Tyra, Guy Sparrow)

FIRST GAME STARTS 7:15

Prices—\$4.50, \$3, \$2.50, \$2, \$1.50

Tickets on sale at Madison Square Garden box office. Mail orders promptly filled. Write Basketball Dept., Madison Square Garden, 307 W. 49th St. Add 25 cents for handling and mailing.





# Crowning achievement

**OF 100 YEARS OF CRAFTSMANSHIP !**

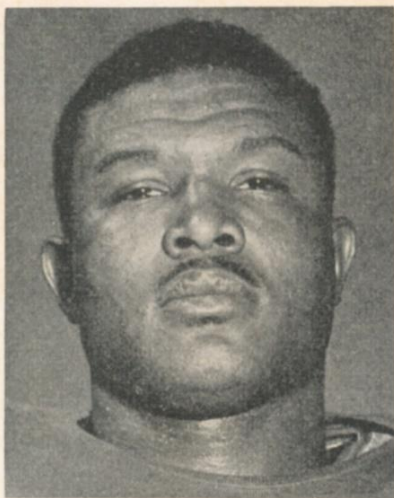
With craftsmanship comes perfection. In a product... and in the pleasure it delivers. Your confidence in the unchanging quality of Seagram's 7 Crown has made it the most popular whiskey of our time... the American whiskey of the century.

**Say Seagram's and be Sure**  
OF AMERICAN WHISKEY AT ITS FINEST

SEAGRAM-DISTILLERS COMPANY, NEW YORK CITY. BLENDED WHISKEY. 86 PROOF. 65% GRAIN NEUTRAL SPIRITS.



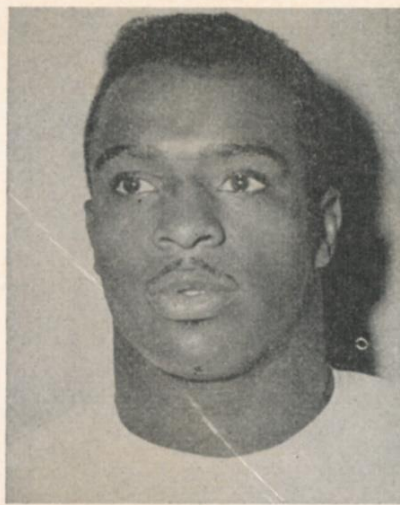
# Giant Gallery



*Mel Triplett*

**Mel Triplett (33)**, a No. 5 draft choice in 1955, has capably filled a long-standing Giant need for a fullback who can block and hit the line authoritatively. When big Mel rams his shoulders into a rival end or linebacker, he leaves a permanent impression. As a ballcarrier, he has first-down power plus breakaway speed. The 25-year-old Toledo graduate is the father of five children.

**Bobby Epps (35)**, back in action after a year of service as an Army lieutenant, supplies the Giants with a welcome complementary punch at fullback. The stubby Pittsburgh graduate, very fast on the getaaway, is an explosive runner on quick-openers and "draw" plays and, while he may not bruise his blocking targets as much as Triplett does, seldom misses the mark. A No. 14 draft choice in 1954, Bobby is married and has one son.



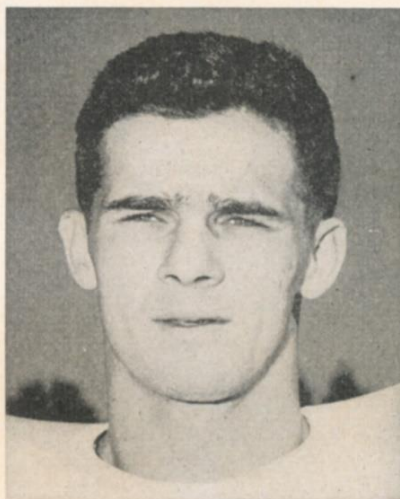
*Bobby Epps*



*Jim Patton*

**Jim Patton (20)**, one of the many Ole Miss stars who have made the grade with the Giants, took over as regular right safety last season after a year of apprenticeship. Perhaps the fastest Giant, he's a far-ranging pass-defender and a crisp, decisive tackler. His speed makes him a breakaway threat on kick returns and interceptions. He raced 50 yards to a TD on an interception against the Steelers. Drafted No. 8 in 1955, Jim is married, has two youngsters.

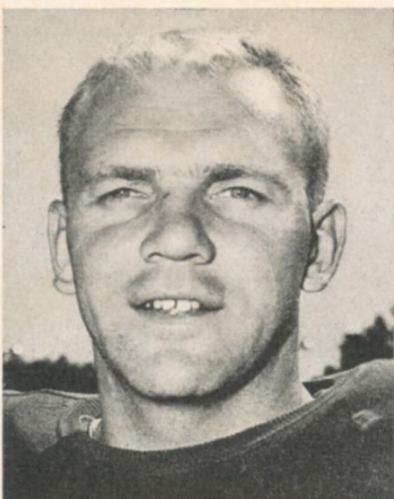
**Dick Nolan (25)**, one of the neighbors' boys from White Plains, has been Giants' regular right-side cornerman on defense for three of his four seasons with the New Yorkers. He's a fiery competitor who specializes in coming up fast to make booming tackles. A college star at Maryland, Dick was a No. 4 draft choice in 1954. He is married, has two children.



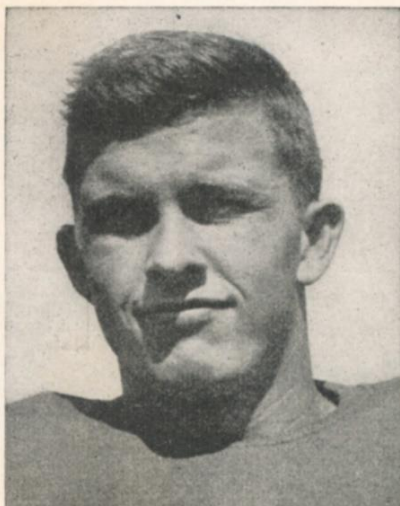
*Dick Nolan*

**Bill Austin (60)**, a member of the Giant family since 1950, has made a great comeback from a hobbling 1956 knee injury. The husky blond from Oregon State first cracked the Giant regular line-up as a 20-year-old in 1950. With time out for two years in the Army, he has been a key offensive player ever since. Excels at pulling out to lead interference on wide plays. A No. 13 draft choice in 1949, Bill is an off-season resident of Los Angeles. He's a benedict.

**Ray Beck (61)**, a 1951 All-America at Georgia Tech who was drafted No. 2 in 1952, is perhaps the most versatile Giant lineman. As a rookie, he was an outstanding offensive guard. In 1955, after two years of Army service, he excelled as a defensive middle guard and linebacker. Last year, he played four different positions on the offensive line. Ray and his wife, Claire, who have two youngsters, are talented entertainers who have enlivened many a Giant party with their singing and dancing act.



*Bill Austin*



*Ray Beck*

**AUTOGRAPH COLLECTORS:** "Giant Gallery" is a weekly program feature.

**PLEASE USE ENTRANCE RAMP NEAREST YOUR SEAT**



# Cardinals on Offense

R. H. Mann (44)	F. B. Olszewski (36)	Q. B. McHan (8)	L. H. Matson (33)
R. E. Nagler (86)	R. T. Jennings (70)	R. G. Konovsky (67)	C. Putnam (50)
		L. G. Hogland (64)	L. T. Teeuws (74)
			L. E. Boydston (83)

# Giants on Defense

L. E. Yowarsky (78)	L. T. Modzelewski (77)	M. G. Huff (70)	R. T. Katcavage (75)	R. E. Robustelli (81)
L. W. Hughes (48)	L. L. B. Svoboda (30)	L. S. Tunnell (45)	R. S. Patton (20)	R. L. B. Svare (84)
				R. W. Nolan (25)

## CHICAGO CARDINALS ROSTER

No.	Player	Position	Weight	Height	Age	College	Yrs. Pro
7	Marchibroda, Ted	QB	180	5:10	26	St. Bonaventure-Det.	4
8	McHan, Lamar	QB	197	6:01	24	Arkansas	4
12	Larson, Paul	QB	185	5:11	25	California	1
20	Lewis, Woodley	HB	195	6:00	31	Oregon	8
21	Sears, Jim	HB	180	5:11	26	U. S. C.	2
31	Hammack, Mal	FB	200	6:02	24	Florida	2
33	Matson, Ollie	HB	210	6:02	27	U. S. F.	5
35	Childress, Joe	HB	200	6:00	23	Auburn	2
36	Olszewski, Johnny	FB	196	5:11	26	California	5
40	Crow, London	HB	187	6:01	24	U. S. C.	3
41	Hill, Jim	HB	190	6:02	29	Sam Huston	3
44	Mann, Dave	HB	190	6:02	25	Oregon State	3
49	Bernardi, Frank	HB	180	5:09	23	Colorado	3
50	Putman, Earl	C	308	6:06	25	Arizona St., Tempe	1
51	Sanford, Leo	C	230	6:01	27	Louisiana Tech	7
53	Tubbs, Jerry	C	216	6:02	22	Oklahoma	1
55	West, Stan	C	235	6:02	29	Oklahoma	8
57	Brettschneider, Carl	G	220	6:01	25	Iowa State	2
64	Hogland, Doug	G	245	6:03	26	Oregon State	5
65	Toogood, Charley	G	230	6:00	30	Nebraska	7
66	Husmann, Ed	G	225	6:00	25	Nebraska	3
67	Konovsky, Bob	G	245	6:02	22	Wisconsin	2
70	Jennings, Jack	T	245	6:04	30	Ohio State	8
72	Ulrich, Chuck	T	250	6:04	26	Illinois	4
73	Lunceford, Dave	T	240	6:04	23	Baylor	1
74	Teeuws, Len	T	245	6:05	28	Tulane	6
75	Pasquesi, Tony	T	250	6:04	24	Notre Dame	3
76	Finnin, Tom	T	260	6:02	29	Detroit	5
81	Lane, Dick	HB	190	6:02	30	Scottsbluff Junior	6
83	Boydston, Max	E	207	6:02	25	Oklahoma	3
84	Sugar, Leo	E	210	6:01	28	Purdue	4
85	Summerall, Pat	E	230	6:04	27	Arkansas	6
86	Nagler, Gern	E	190	6:02	24	Santa Clara	4
88	Sagely, Floyd	E	190	6:01	24	Arkansas	3
89	Weber, Charles	E	225	6:01	27	Westchester	3

CARDINAL STAFF—Ray Richards, Nebraska, head coach; Chuck Drulis, Temple, line coach; Bob Nowaskey, George Washington, end coach; Tom Keane, Ohio State, assistant coach; Charley Trippi, Georgia, assistant coach; Dr. Joseph Doller, trainer; Phil Bouzeos, equipment manager; Dr. R. C. O'Halloran, physician.

The Official Watch for Timing Today's Game

PLEASE USE ENTRANCE

Enjoy it tonight!

# Calvert



RESERVE



CK-OFF  
5 P.M.

## Giants on Offense

R. H. Webster (29) F. B. Triplett (33) Q. B. Conerly (42) L. H. Gifford (16)  
R. E. MacAfee (80) R. T. Yelvington (72) R. G. Strond (66) C. Wietecha (55) L. G. Beck (61) L. T. Brown (79) L. E. Rote (44)

## Cardinals on Defense

L. E. Weber (89) L. T. Ulrich (72) M. G. West (55) R. T. Finnin (76) R. E. Summerall (85)  
L. W. Lane (81) L. L. B. Brettschneider (57) L. S. Lewis (20) R. S. Crow (40) R. L. B. Sanford (51) R. W. Hill (41)

### SPECIALISTS

Agajanian (8), Chandler (34),  
Ford (16)  
Conerly (34), Conerly (42)  
Agajanian (8)

### OFFICIALS

#### Referee

Minneapolis (52), Minnesota

#### Umpire

Philadelphia (51), Penn State

#### Head Linesman

Pittsburgh (48), Carnegie Tech

#### Chief Judge

Georgetown (29), Georgetown

#### Field Judge

Loyola (38), Loyola (Md.)

### ADDITIONAL SPECIALISTS

Summerall (85), Lewis (20).  
Mann (44).  
Summerall (85), Lewis (20).

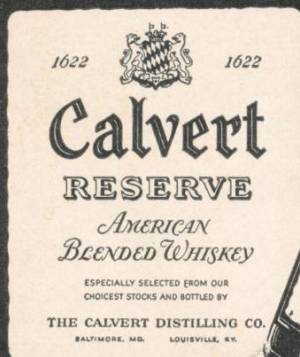
## NEW YORK GIANTS ROSTER

No.	Player	Position	Weight	Height	Age	College	Yrs. Pro
8	Agajanian, Ben	E	215	6:00	38	New Mexico	9
11	Heinrich, Don	QB	180	6:00	26	Washington	4
12	Clatterbuck, Bob	QB	195	6:03	25	Houston	4
16	Gifford, Frank	B	205	6:01	27	Southern California	6
20	Patton, Jim	B	180	5:11	25	Mississippi	3
21	Crawford, Ed	B	185	6:03	23	Mississippi	1
22	Bookman, John	B	175	5:11	23	Miami (Fla.)	1
25	Nolan, Dick	B	180	6:01	25	Maryland	4
29	Webster, Alex	B	215	6:03	26	North Carolina State	3
30	Svoboda, Bill	LB	215	6:00	28	Tulane	8
33	Triplett, Mel	B	215	6:02	25	Toledo	3
34	Chandler, Don	B	205	6:02	22	Florida	2
35	Epps, Bobby	B	205	5:08	25	Pittsburgh	3
40	Filipski, Gene	B	185	5:10	26	Villanova	2
42	Conerly, Charles	QB	185	6:01	36	Mississippi	10
44	Rote, Kyle	B	205	6:00	29	Southern Methodist	7
45	Tunnell, Emlen	B	200	6:01	32	Iowa	10
48	Hughes, Ed	B	180	6:01	26	Tulsa	4
55	Wietecha, Ray	C	225	6:01	28	Northwestern	5
60	Austin, Bill	G	225	6:01	28	Oregon State	7
61	Beck, Ray	G	225	6:02	25	Georgia Tech	4
66	Stroud, Jack	G	240	6:01	28	Tennessee	5
68	Spinks, Jack	G	240	6:01	26	Alcorn A. and M.	4
70	Huff, Sam	LB	230	6:01	22	West Virginia	2
72	Yelvington, Dick	T	240	6:02	28	Georgia	6
75	Katcavage, Jim	E	230	6:03	22	Dayton	2
77	Modzelewski, Dick	T	260	6:00	26	Maryland	5
78	Yowarsky, Walt	E	235	6:02	29	Kentucky	6
79	Brown, Roosevelt	T	245	6:03	24	Morgan State	5
80	MacAfee, Ken	E	210	6:02	28	Alabama	4
81	Robustelli, Andy	E	230	6:01	29	Arnold	7
83	Martinkovic, John	E	245	6:03	30	Xavier	7
84	Svare, Harland	LB	215	6:00	26	Washington State	5
85	Schnelker, Bob	E	215	6:04	27	Bowling Green	5
89	Livingston, Cliff	E	215	6:03	27	U. C. L. A.	4

Is Longines—"The World's Most Honored Watch"

RAMP NEAREST YOUR SEAT

GIANTS STAFF: Jim Lee Howell, Arkansas, head coach; Vince Lombardi, Fordham, backfield coach; John Dell Isola, Fordham, line coach; Ken Kavanaugh, L. S. U., end coach; Tom Landry, Texas, defensive coach; John Johnson, Sid Moret and John Dziegiel, trainers; Dr. Francis J. Sweeny, physician; Dr. Arthur C. Croker, dentist.



# Nothing finer in American taste

CALVERT DISTILLERS CO., N.Y.C. • AMERICAN BLENDED WHISKEY • 86.8 PROOF • 65% GRAIN NEUTRAL SPIRITS



The Marlboro Man

**MARLBORO  
BRINGS YOU  
GIANTS'  
GAMES  
ON TV...**

See your local listing  
for time and station

*A lot of man... a lot of cigarette*

*"He gets a lot to like—filter, flavor, flip-top box." The works.*

A filter that means business. An easy draw that's all flavor. And the flip-top box that ends crushed cigarettes.

(MADE IN RICHMOND, VIRGINIA, FROM A PRIZED RECIPE)



POPULAR FILTER PRICE





**CARDS' DEFENSIVE PLATOON:** Front, from left: Summerall, Finnin, West, Ulrich, Weber. Back: Hill, Sanford, Crow, Sagely, Brettschneider, Lane.



**OLLIE MATSON**

**E**VER since the "Dream Backfield" era of Paul Christman, Charley Trippi, Elmer Angsman and Pat Harder, the Cardinals have featured an explosive attack.

This flock of Birds is carrying on that tradition. There is no more feared runner in football than big Ollie Matson. The 1952 Olympic sprinter from San Francisco, working his way up among the league's all-time ground-gainers, is a breakaway threat every time he handles the ball. Dave Mann, Matson's companion halfback, is another mercurial runner and pass-catcher.

To supplement this outside menace, the Cardinals have "keep you honest" inside punch. Devil-may-care Johnny Olszewski and Joe Childress, who understudies him at fullback, are high-voltage line-crashers. Then there is the brilliant Lamar McHan, a quarterback

## About the Cardinals



**LAMAR  
McHAN**

who ranks among the league's top passers and also likes to tuck that ball under his arm and carry it himself.

Gern Nagler, whose 83-yard dash with a McHan toss against the Redskins a few weeks back is the league's longest 1957 scoring



**JOHNNY OLSZEWSKI**

pass, and Max Boydston, of Oklahoma fame, are fleet, nifty receivers.

A seasoned, hard-blocking line, featuring Jack Jennings and Len Teeuws, completes the formidable Cardinal offensive unit.

A swift, far-ranging secondary distinguishes Coach Ray Richards' defensive platoon. Dick (Night Train) Lane has been an all-league corner man the last couple of seasons and Lindon Crow, at right safety, led the pro circuit in interceptions in 1956.

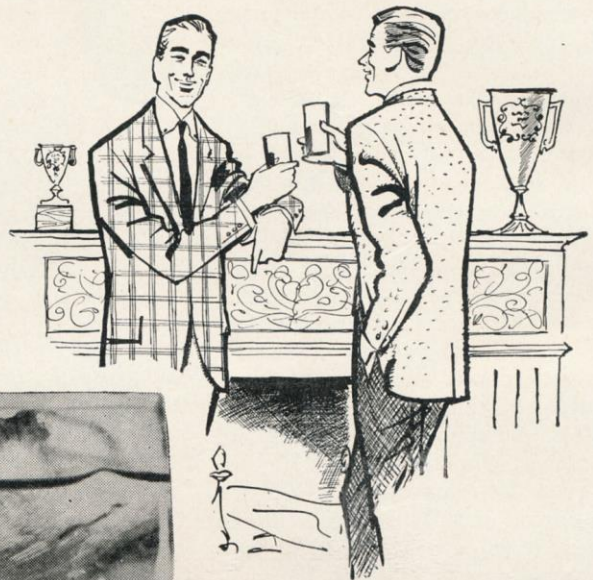
Among the more interesting Cardinal rookies are Earl Putnam, offensive center from Arizona State whose 308 pounds establish him as the bulkiest player in the league; Jerry Tubbs, Oklahoma's All-America center of 1956, and Paul Larson, who led the nation in total offense at California a few years back.

**PLEASE USE ENTRANCE RAMP NEAREST YOUR SEAT**



MEN WHO KNOW THE SCORE...

*Live in Elegance*  
*...enjoy* **Schenley**





## BOYFROMBIPPUS

(Continued from page 9)

only briefly, then resigned from all his New England assignments. Though he had nothing else lined up in New York, luck was with him. Ted Husing became ill and Chris took over Husing's Monday night fights. The next year Harry Wismer lost his voice while telecasting a Giant game from Pittsburgh. Chris did so well as a fill-in that he was hired for the TV job the following year. He has held it ever since.

By now, he has done virtually every major sporting event—racing's "Triple Crown" classics, the Masters Golf Tournament, Madison Square Garden basketball tournaments, the Milwaukee Braves road games.

He is married to the former Fran Paige and has a 2-year-old daughter, Christina. He has not had a vacation since he came to New York in 1952. "I remember that I got this job substituting for others," Chris says with a grin. "I don't want anyone substituting for me."

## Jottings on the Giants

Except when he's bamboozling the opposition with his deft fakes, there's no sham or pretense about Charlie Conerly. On his own initiative the other day, Charlie corrected an error of long standing on the Giant official roster. "I'm 36 years old, not 33," said the Giant quarterback. "What's more, I'm not ashamed of it and hope to keep playing until I'm at least 40."

You probably are aware of it by now, but for the benefit of late-comers, the Giant office has been moved to the Coliseum Tower, 10 Columbus Circle. The IND, IRT (West Side local) and BMT subways—59th Street-Columbus Circle stops—will drop you practically on the doorstep.

Bootin' Ben Agajanian is handing out cigars in celebration of the birth of a daughter, his fourth youngster . . . Apologies to Bob Schnelker for having called him "Otto" in the Redskin program. Must have been thinking of Otto Schnellbacker . . . The Giants and visiting teams doff their hats to the Yankee grounds crew and Jim Thompson, the Stadium superin-

tendent, for the great job they have done on the Stadium gridiron. "We have the best turf in the whole league," says Coach Jim Lee Howell.

Another commercial, in the public interest: Don't try to buy Giant tickets on Saturdays at 10 Columbus Circle. That office is closed Saturdays. Go to one of the other outlets: Yankee Stadium, the Yankee ticket office in Grand Central, the Davega Stores in Newark, Hackensack, Jamaica, Hempstead and White Plains or Andy Robustelli's Sports Shops in Stamford and Cos Cob.

Cliff Livingston of the Giants had won \$6,000 on "Name That Tune" going into this week's show . . . The current issue of Ebony Magazine has an elaborate feature on the Giants' Em Tunnell . . . Beating the college bushes for future Giant talent are Al De Rogatis, the former tackle, and Allie Sherman, the ex-backfield coach who just recently joined the scouting staff. De-Ro, now an old hand at bird-dogging, spotted Alex Webster and Sam Huff, among others.

**GULF OIL—BALLANTINE BEER—BEN-GAY**

**BOWERY SAVINGS BANK**



**Present**

**THE GIANTS**

**ON**

**WINS**

**1010 on Your Radio Dial**

**All Home and Away Games**

**PLAY-BY-PLAY BY LES KEITER**



# Touchdown!



KING-SIZE  
**FILTER**

# KOOL

the cigarette with the  
**SNOW-FRESH FILTER**

Blocked by the hot cigarette habit? You can break that habit with refreshing Filter Kool. Kools taste *clean* and *fresh* and *light* . . . the *snow-fresh filter* makes the menthol right! So, put yourself on the winning team, the KOOL team! Break the hot cigarette habit with refreshing Filter Kool! Buy a carton today!



## Giant Blackboard

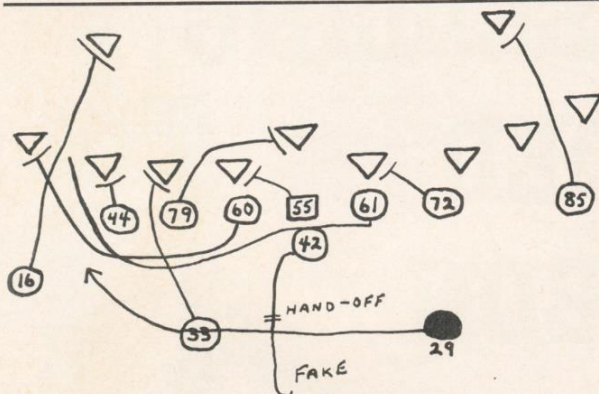
TODAY, we'll rapidly review another of the Giants' favored attacking sequences.

Vin Lombardi, head coach Jim Lee Howell's professor of offensive nomenclature, calls the formation from which the diagrammed off-tackle play evolves "balanced left over."

It's "balanced" because flankers are set out on opposite sides, approximately equidistant from the ball. It's "left" because the left halfback is the flanked back. It's "over" because the fullback moves over from his normal position behind center into the spot vacated by the left halfback.

Equally often, the Giants use a "balanced right over" formation, with Webster (29), instead of Gifford (16), in the flanking position.

On the "balanced left over" play illustrated, Conerly (42) whirls out to his left on taking the handback from center. He fakes to the fullback—Triplet (33) or Bobby Epps (35)—who drives into the line, then hands off to the right half—Webster (29).



Led by two guards, Austin (60) and Beck (61), Webster slants to his left. Depending on the blocking angles Austin and Rote (44) are able to get on the defensive corner man and outside linebacker, Alex goes wide or cuts inside.

The Giant fullback blocks the defensive right end, releasing the left tackle—Brown (79)—for an angle shot at the middle line-backer. Webster and Gifford, running to the right, have made a lot of yardage on this powerful play the last three seasons.

Since an effective football attack consists of play sequences off the same formation, rather than just a series of unrelated plays, the Giants exploit all possibilities of their "balanced over" formation.

Could be that the fullback will get the ball on his dive into the line or for a sweep to the right, with the halfback faking a dive. Could be that either the fullback or the halfback who stays in gets a quick pitch for a fast sweep, with the end and flanker on that side cross-blocking the defensive corner-man and outside line-backer.

Could also be that the quarterback will pass off a double fake, drop back directly to pass or make a "draw" hand-off to either deep back on a feigned retreat to pass.

How many of these things the Giants actually will do in one game from "balanced over" depends on the course of the contest, the defense and what's working. The use of this versatile formation emphasizes the progressive aspect of Giant football.

## Greatest thing that's happened to men...since women!

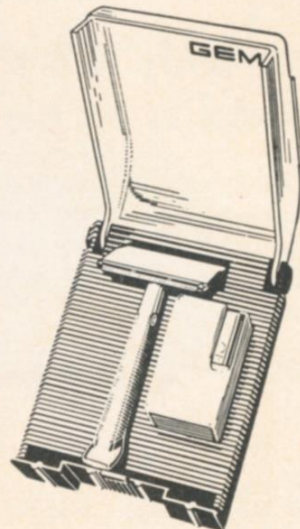


IT'S THE HEAVY, ALL-METAL **NEW GEM RAZOR** WITH FLAT-TOP DESIGN THAT HUGS YOUR CHEEK



AND ALWAYS HOLDS THE BLADE AT THE PERFECT ANGLE FOR A CLOSE, CLEAN SHAVE WITHOUT IRRITATION!

**NEW  
GEM**  
RAZOR WITH  
FLAT-TOP DESIGN



ONLY  
**\$1.00** WITH DISPENSER OF GEM BLADES  
AND TRAVEL CASE



# J. W. DANT

## WORLD'S LARGEST SELLING BONDED BOURBON



I'm Newt Kook, President of the Dant Distillery. Down in Kentucky we have a saying:

**"The only way to have a friend is to be one..."**

And I don't know a better way of being a friend to so many as to give them so much for so little. My J. W. Dant genuine Kentucky sour mash bourbon does just that. No wonder it has made more friends the world over than any other Bond!

### GIANT LEADERS

Rushing.....	Webster: 89—355 yds.
Passing.....	Conerly: 62 of 110
Receiving.....	Gifford: 16—227 yds.
Scoring.....	Agajanian: 29 pts.
Punting.....	Chandler: 45.3-yd. avg.
Punt Returns.....	Filipski: 12—74 yds.
Kick-Off Returns.....	Filipski: 11—227 yds.
Interceptions.....	Tunnell: 2—52 yds.





## All-Time Giant Records

### TEAM RECORDS

**World Champions**—1927, 1934, 1938, 1956  
**Conference Champions**—1933, 1934, 1935, 1938, 1939, 1941, 1944, 1946, 1956  
**Points, Season**—311 (1956—13 Games); 308 (1930—17 Games); 297 (1948—12 Games)  
**Opponents Points, Season**—388 (1948)  
**Fewest Opponents Points, Season**—20 (1927)  
**Points, Game**—56 (against Philadelphia Eagles, 10/15/33)  
**Opponents Points, Game**—63 (Chicago Cardinals, 10/17/48; Pittsburgh Steelers, 11/30/52)  
**First Downs, Season**—239 (1956)  
**First Downs, Game**—31 (vs. Pittsburgh, 12/5/48)  
**Touchdowns, Season**—42 (1948, 1956)  
**Touchdowns, Game**—8 vs. Philadelphia, 10/15/33; 8 vs. Green Bay, 11/21/48; 8 vs. Baltimore Colts, 11/19/50  
**Yards, Passing, Season**—2,504 (1948)  
**Yards, Rushing, Season**—2,336 (1950)  
**Yards, Game**—625 (vs. N. Y. Yanks, 12/3/50)  
**Yards, Passing, Game**—363 (vs. Pittsburgh Steelers, 12/5/48)  
**Interceptions By, Season**—41 (1951)  
**Interceptions By, Game**—8 (vs. Green Bay, 11/21/48; vs. N. Y. Yanks, 12/16/51)

### PASS INTERCEPTIONS

#### Passes Intercepted, Season

11 Otto Schnellbacher, 1951      10 Emlen Tunnell, 1949  
 10 Frank Reagan, 1947

#### Passes Intercepted, Career

67\*Em Tunnell (1948-56)

### PUNTING

#### Punts, Game

14 John Kinscherf vs. Detroit, 11/7/43

#### Longest Punt

74 yds.—Len Younce, 1943

#### Punting Average, Season

47.4 yds.—Kay Eakin, 1941

\*Through 1956.

### Giant Picture Pack

Attention, Giant fans! Here's a collector's item for you. For just one dollar, you can get a complete set of Giant player pictures—autographed, 5 by 7 inch, glossy prints of all the stars and their thumbnail biographies. You can obtain this picture pack from Stadium vendors or at Stadium souvenir stands. Or send \$1 to Giant Pictures, P. O. Box 119, Brooklyn 1, N. Y.

### Giant Parking Facilities

#### Stadium Parking Lots

South side 157th St., Ruppert Pl. to Cromwell Ave.  
 Between Cromwell and River Aves., on 153rd St.  
 163rd to 164th St., between River and Gerard Aves.  
 151st St. and River Ave., opposite Bronx County Jail.

#### Privately Owned Parking Lots

West side Ruppert Pl., between 157th and 158th Sts.  
 West side River Ave., between 151st and 153rd Sts.  
 West side River Ave., and 157th St.  
 East side River Ave., North of 153rd St.  
 East side River Ave., North 151st St.  
 East side River Ave., 164th to 165th Sts.  
 East side River Ave., South of 162nd St.

#### Garages

Cromwell Ave. and 157th St.  
 East side of River Ave., South side of 158th St.  
 East side of River Ave., North side of 157th St.  
 East side of River Ave., South side of 157th St.  
 North side of 158th St., between River and Gerard Aves.

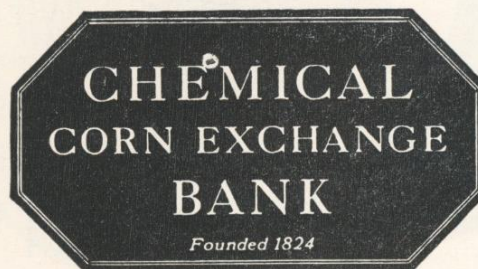
Also, the Polo Grounds lots again will be in service for all Giant games at the Stadium.

easy  
does  
it



The Knowing New Yorker meets his expenses, pays his bills, by mail. You enjoy a lot of time and energy-saving benefits with a Special Checking Account. No required balance. Costs so little—is so convenient and safe. Monthly statements help keep your budget straight. Open a Special Checking Account now. All other banking services here, too.

See phone book for office  
nearest you



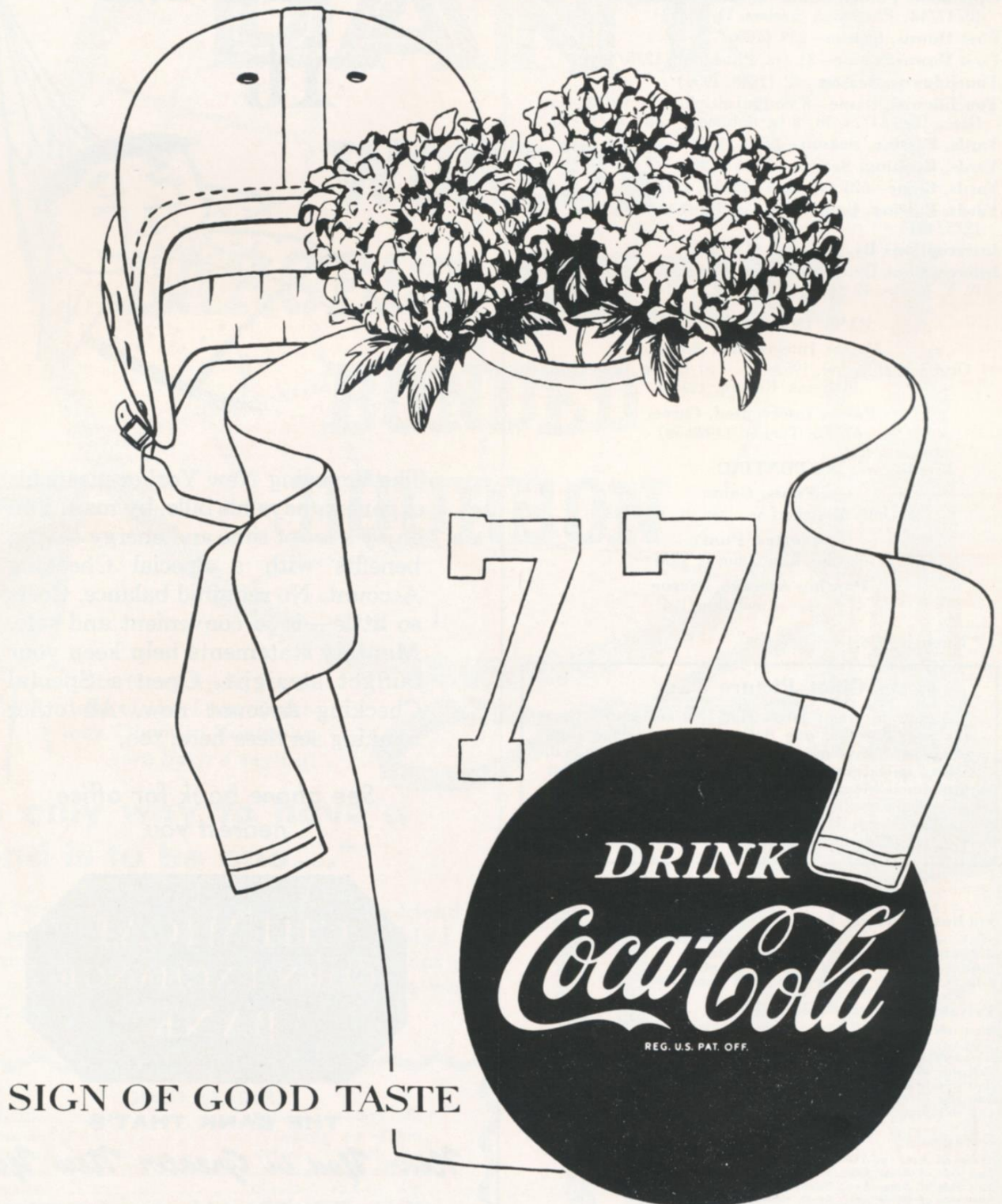
THE BANK THAT'S

*Near You in Greater New York*

Member Federal Deposit Insurance Corporation



# All-America favorite ...ice-cold Coke



SIGN OF GOOD TASTE

"Coke" is a registered trade-mark.



# NATIONAL LEAGUE OFFICIALS' SIGNALS



Offside



Crawling, Pushing,  
Helping Runner



Illegal Motion



Illegal Pass



Unsportsmanlike  
Conduct



Pass Interference



Holding, Illegal  
Use of Hands



Personal Foul  
(indication of  
offense follows)



Delay of Game,  
Excess Time-Out



Touchdown, Field  
Goal, Extra Point



Safety



Loss of Down



Penalty Declined,  
Incomplete Pass,  
Missed Goal



First Down



Dead Ball



No Time-Out or  
Time In with Whistle



Time-Out

**THIRSTY?**  
have a  
**Knicker**

Satisfy Your  
beer thirst better

Ruppert Knickerbocker Beer, Jacob Ruppert, N. Y. C.



**Knickerbocker**

New York's Famous Beer



# This Week's League Pairings

Home Team		Visiting Team		Home Team		Visiting Team	
NEW YORK		CHICAGO CARDS		WASHINGTON		BALTIMORE	
Won 4, Lost 2		Won 2, Lost 4		Won 2, Lost 4		Won 3, Lost 3	
3—Cleveland (a) .....	6	20—San Francisco (a) .....	10	7—Pittsburgh (a) .....	28	34—Detroit .....	14
24—Philadelphia (a) .....	20	14—Washington .....	37	37—Chicago Cards (a) .....	14	21—Chicago Bears .....	10
24—Washington (a) .....	20	20—Pittsburgh (a) .....	29	20—New York .....	24	45—Green Bay (a) .....	17
35—Pittsburgh .....	0	44—Washington (a) .....	14	14—Chicago Cards .....	44	27—Detroit (a) .....	31
14—Washington .....	31	7—Cleveland .....	17	31—New York (a) .....	14	21—Green Bay .....	24
31—Green Bay (a) .....	17	21—Philadelphia .....	38	17—Cleveland (a) .....	21	13—Pittsburgh .....	19
—Chicago Cards .....		—New York (a) .....		—Baltimore .....		—Washington (a) .....	
—Philadelphia .....		—New York .....		—Cleveland .....		—Chicago Bears (a) .....	
—Chicago Cards (a) .....		—Cleveland (a) .....		—Philadelphia (a) .....		—San Francisco .....	
—San Francisco .....		—Chicago Bears .....		—Chicago Bears (a) .....		—Los Angeles .....	
—Pittsburgh (a) .....		—Philadelphia (a) .....		—Philadelphia .....		—San Francisco (a) .....	
—Cleveland .....		—Pittsburgh .....		—Pittsburgh .....		—Los Angeles (a) .....	
131	94	126	145	126	145	161	115

PHILADELPHIA		DETROIT		CHICAGO BEARS		GREEN BAY	
Won 2, Lost 4		Won 3, Lost 3		Won 2, Lost 4		Won 2, Lost 4	
13—Los Angeles (a) .....	17	14—Baltimore (a) .....	34	17—Green Bay (a) .....	21	21—Chicago Bears .....	17
20—New York .....	24	24—Green Bay (a) .....	14	10—Baltimore (a) .....	21	14—Detroit .....	24
7—Cleveland (a) .....	24	10—Los Angeles .....	7	17—San Francisco .....	21	17—Baltimore .....	45
17—Cleveland .....	7	31—Baltimore .....	27	34—Los Angeles .....	26	14—San Francisco .....	24
0—Pittsburgh (a) .....	6	17—Los Angeles (a) .....	35	17—San Francisco (a) .....	21	24—Baltimore (a) .....	21
38—Chicago Cards (a) .....	21	31—San Francisco (a) .....	35	16—Los Angeles (a) .....	10	17—New York .....	31
—Detroit .....		—Philadelphia (a) .....		—Green Bay .....		—Chicago Bears (a) .....	
—New York (a) .....		—San Francisco .....		—Baltimore .....		—Los Angeles .....	
—Washington .....		—Chicago Bears .....		—Detroit (a) .....		—Pittsburgh (a) .....	
—Pittsburgh .....		—Green Bay .....		—Washington .....		—Detroit (a) .....	
—Washington (a) .....		—Cleveland .....		—Chicago Cards (a) .....		—Los Angeles (a) .....	
—Chicago Cards .....		—Chicago Bears (a) .....		—Detroit .....		—San Francisco (a) .....	
95	99	127	152	111	120	107	162

CLEVELAND		PITTSBURGH		LOS ANGELES		SAN FRANCISCO	
Won 5, Lost 1		Won 4, Lost 2		Won 2, Lost 4		Won 5, Lost 1	
6—New York .....	3	28—Washington .....	7	17—Philadelphia .....	13	10—Chicago Cards .....	20
23—Pittsburgh (a) .....	12	12—Cleveland .....	23	20—San Francisco (a) .....	23	23—Los Angeles .....	20
24—Philadelphia .....	7	29—Chicago Cards .....	20	7—Detroit (a) .....	10	21—Chicago Bears (a) .....	17
7—Philadelphia (a) .....	17	0—New York (a) .....	35	26—Chicago Bears (a) .....	34	24—Green Bay (a) .....	14
17—Chicago Cards (a) .....	7	6—Philadelphia .....	0	35—Detroit .....	17	21—Chicago Bears .....	17
21—Washington .....	17	19—Baltimore (a) .....	13	10—Chicago Bears .....	16	35—Detroit .....	31
—Pittsburgh .....		—Cleveland (a) .....		—San Francisco .....		—Los Angeles (a) .....	
—Washington (a) .....		—Green Bay .....		—Green Bay (a) .....		—Detroit (a) .....	
—Los Angeles .....		—Philadelphia (a) .....		—Cleveland (a) .....		—Baltimore (a) .....	
—Chicago Cards .....		—New York .....		—Baltimore (a) .....		—New York (a) .....	
—Detroit (a) .....		—Washington (a) .....		—Green Bay .....		—Baltimore .....	
—New York (a) .....		—Chicago Cards (a) .....		—Baltimore .....		—Green Bay .....	
98	63	94	98	115	113	134	119

## NATIONAL LEAGUE LEADERS

### RUSHING

1. Wilson, Los Angeles .....	94 for 496 yds.
2. McElhenny, San Francisco .....	88 for 419 yds.
3. Brown, Cleveland .....	101 for 388 yds.

### PASSING

1. LeBaron, Washington .....	47 of 74 for 751 yds.
2. O'Connell, Cleveland .....	35 of 59 for 547 yds.
3. McHan, Cardinals .....	50 of 108 for 940 yds.

### RECEIVING

1. Conner, San Francisco .....	27 for 351 yds.
2. McLaren, Pittsburgh .....	24 for 315 yds.
3. Dooley, Bears .....	22 for 311 yds.

### SCORING

1. Blanda, Bears .....	45 pts.
2. Mutscheller, Baltimore .....	42 pts.
3. Baker, Washington .....	36 pts.

## NATIONAL LEAGUE STANDINGS

### EASTERN CONFERENCE

	W.	L.	T.	Pct.	Points For	Agst.
Cleveland .....	5	1	0	.833	98	63
NEW YORK .....	4	2	0	.667	131	94
Pittsburgh .....	4	2	0	.667	94	98
Chicago Cards .....	2	4	0	.333	126	145
Philadelphia .....	2	4	0	.333	95	99
Washington .....	2	4	0	.333	126	145

### WESTERN CONFERENCE

San Francisco .....	5	1	0	.833	134	119
Baltimore .....	3	3	0	.500	161	115
Detroit .....	3	3	0	.500	127	152
Chicago Bears .....	2	4	0	.333	111	120
Green Bay .....	2	4	0	.333	107	162
Los Angeles .....	2	4	0	.333	115	113

PLEASE USE ENTRANCE RAMP NEAREST YOUR SEAT



# SITTING PRETTY



*"My master  
prefers  
Melrose"*

If pleasure is your goal, put Melrose Rare in your drink and you'll really be sitting pretty with "the very best"! What makes Melrose so *Rare*? It's mellowed with superb whiskies seven years old...*more, older, finer* whiskies than any leading blend!

There's nothing to compare with

# MELROSE

RARE



## NATIONAL LEAGUE LEADERS

Rushing.....	Wilson, Los Angeles.....	69 for 392 yds.
Passing.....	LeBaron, Washington.....	38 of 59 for 627 yds.
Pass-Receiver.....	Conner, San Francisco.....	19 for 257 yds.
Scoring.....	Mutscheller, Baltimore.....	42 pts.
Punting.....	Deschaine, Green Bay.....	47.9-yd. avg.
Punt Returns.....	Lewis, Cardinals.....	8 for 83 yds.
Kick-Off Returns.....	Wells, Pittsburgh.....	4 for 152 yds.
Interceptions.....	Christiansen, Detroit.....	6 for 64 yds.



BLENDED WHISKEY, 90 PROOF. 40% STRAIGHT WHISKIES, 60% GRAIN NEUTRAL SPIRITS. MELROSE DISTILLERS COMPANY, NEW YORK



# Live Modern

Free up! Get more out of life...  
get more out of smoking!



## Light into that Live Modern flavor!

Smoke today's most exciting cigarette... L&M!  
Only L&M gives you "Live Modern" flavor... the full,  
exciting flavor that means more taste... more aroma!  
Every L&M pack ever made has carried this state-  
ment: "A blend of premium quality cigarette tobaccos  
including special aromatic types."

**L&M lets you pick the pack that suits you best!**



©1957  
Liggett  
& Myers  
Tobacco Co.

HANDY PACKS (King and Reg.)

CRUSH-PROOF BOX (Costs no more)