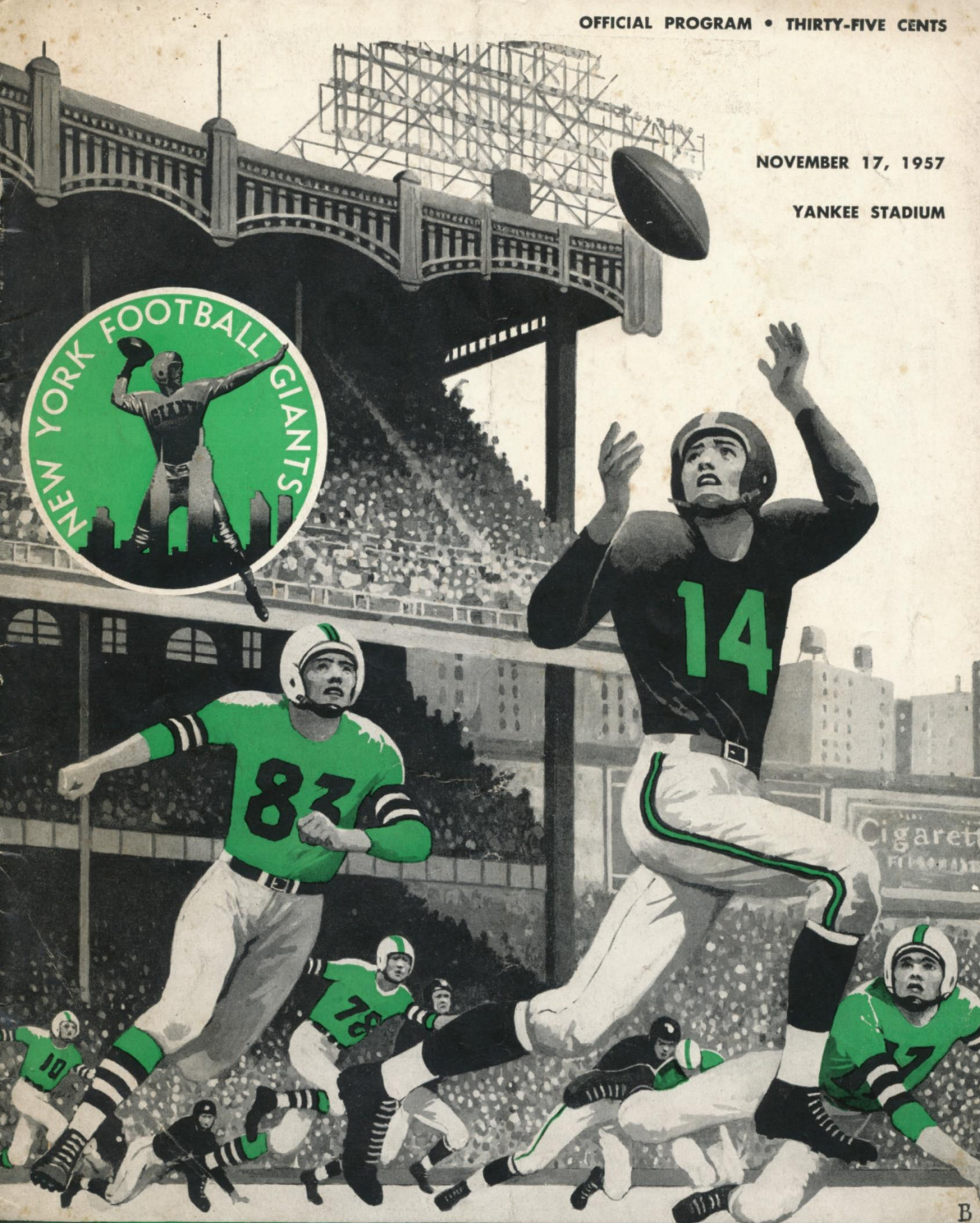


NOVEMBER 17, 1957

YANKEE STADIUM



GIANTS vs. EAGLES

Quality



Products of

The American Tobacco Company
"Tobacco IS OUR MIDDLE NAME"



**Confound it, man,
I asked for
Canada Dry!**



**GINGER ALE
CLUB SODA
QUININE WATER**

A Mixer for Every Taste



Longines

THE WORLD'S MOST HONORED WATCH

OFFICIAL WATCH FOR THE
**GIANTS-EAGLES
FOOTBALL GAME**

Longines, first watch of sport, is recognized as official for timing world records and international events by all international sports and contest associations. Every Longines watch, for whatever its use, is made to be the best of its kind. For yourself, as a gift, no other name on a watch means so much as Longines, the world's most honored watch.

Longines-Wittnauer Watch Company



10 WORLD'S FAIR
GRAND PRIZES
28 GOLD MEDALS



Longines self-winding watches to cope with outdoor life—fully protected against all common watch hazards. For her—Longines Skylark Automatic, \$92.50. For him—Longines All-Guard Automatic, \$99.50. Other Longines watches from \$71.50.

OFFICIAL WATCH FOR



U.S. OLYMPIC COMMITTEE
1948-1952-1956



NAT'L AERONAUTIC ASSN.



NAT'L COLLEGIATE ATHLETIC
ASSN. CHAMPIONSHIPS



NATIONAL SKI ASSN.



AMERICAN
POWERBOAT ASSN.



AAU CHAMPIONSHIPS
AND MANY OTHERS



NATIONAL HORSE
SHOW ASSN.

League Leaders

CALSO SUPREME

300-PLUS

Today's Gasoline
for Today's Horsepower

RPM Supreme Motor Oil

—the motor oil that
halts engine wear!



PRODUCTS OF THE CALIFORNIA OIL COMPANY

TM'S "CALSO," "RPM" AND
CHEVRON DESIGN ®

GIANTS AT STADIUM

Nov. 17.....Philadelphia Eagles

Dec. 1.....San Francisco '49ers

Dec. 15.....Cleveland Browns

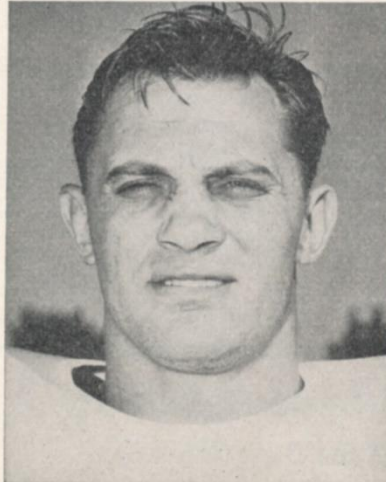
Kick-Off Time—2:05 P.M.

Cheer for the Giants

*Cheer for the New York Giants
And we'll go to victory.
Cheer for the Football Giants,
A fighting team we'll always be.
Cheer for the Red and Blue,
From the Bronx to Lower Bay,
And we will fly our banner high
And win—today!*

*Onward, onward,
Drive on to victory!
Onward Giants,
Onward to victory, to victory!
We'll make a score
And then some more.
They're all the same,
We'll win our game.*

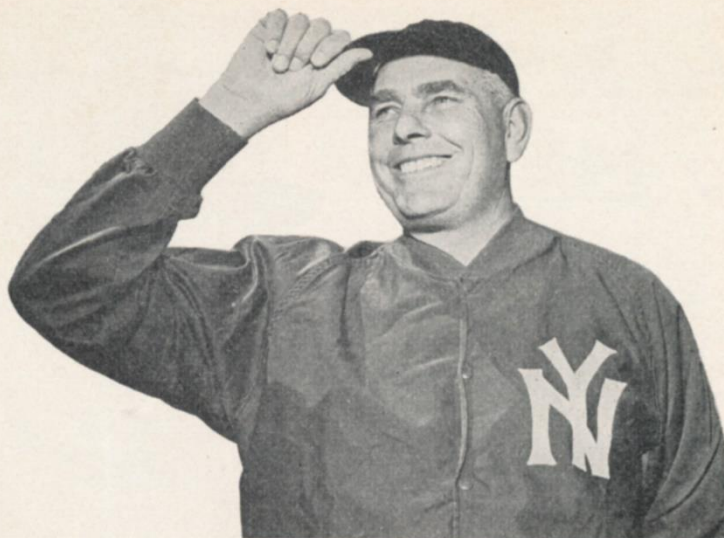
THIS stirring march, to which cold, black, unmusical type fails to do justice, was composed by Kyle Rote and Cy Gillis, whose name appear only on the unnumbered roster of Giant fans.



GIANT CAPTAINS: Kyle Rote and Bill Svoboda.

This book is published by HARRY M. STEVENS, Inc., 320 Fifth Avenue, New York 1, N. Y.

PLEASE USE ENTRANCE RAMP NEAREST YOUR SEAT



JIM LEE HOWELL

It has been given this prominent display because the thought occurs that it might be a good thing for New York's sporting brotherhood to get behind the Big Town's team and do a little all-out rooting.

Over the last couple of seasons, the Giants have established their right to support from the home community by playing a brand of football that gridiron technicians, enviously, have to admit is "the best."

Football is a game in which emotional attitude is of paramount importance. In big league baseball, with its 154-game schedule, the weight of superior average performance can carry a team. In big league football a team has only twelve games and it has to be "up" for all of them to stay in contention.

In this "dog day" stage of the season, when abused bodies begin to revolt under the burden of accumulated bruises, a football team needs all the spiritual uplift it can get to retain peak form.

This is an appeal to all of you who have enjoyed these rousing afternoons of topflight football entertainment at the Stadium to get in there and give these fighting Giants a little fighting support.

Not that the Giants aren't doing very well on their own but, obviously, with the schedule the way it is, they can use all the help they can get to keep the National Football League pennant flying from the Stadium flagstaff.

After today's game, Jim Lee Howell's boys must play the Cardinals—you saw last Sunday how dynamic they can be—in Chicago; the San Francisco Forty-Niners, who lead the Western Conference, here on Dec. 1; the rugged Steelers in Pittsburgh, and then in a Dec. 15 Stadium finale (perhaps) the Cleveland Browns!

There's no doubt of it. The Giants have a hard row to hoe. So let's give them a hand from the stand for the rest of the way, with the refrain...

*Cheer for the New York Giants
And we'll go to victory.
Cheer for the Football Giants,
A fighting team we'll always be.
Cheer for the Red and Blue,
From the Bronx to Lower Bay,
And we will fly our banner high
And win—today!*

For Better Looks
MEN...

Better Look for
MENNEN!



**MENNEN
Spray Deodorant
For Men**

No. 1 seller gives round-the-clock protection.

60¢* \$1.00*



**MENNEN
Skin Bracer**

More men personally chose this than any other.

30¢* 60¢* \$1.00*



**MENNEN
Bath Talc For Men**

Bath-fresh comfort and protection. Contains a full-fledged deodorant.

60¢*



**MENNEN
Foam Shave**

Smoother shaves with Special Menthol Formula.

79¢



**MENNEN
4 great shave creams...**

lather 60¢
lather with menthol 40¢ 60¢
brushless 35¢ 55¢
brushless with menthol 55¢



MENNEN AFTA

No-sting, non-alcoholic after shave lotion... soothes and conditions.

1.00*



**MENNEN
Shave Talc**

Regular or electric shave—ideal before or after... neutral tint doesn't show.

35¢*



**MENNEN
Electric Pre-Shave**

For closer, cleaner shaves. Reduces shaver friction... cools with menthol.

75¢



FOR
CHAMPIONSHIP
GROOMING
EVERY DAY...

MAKE IT MENNEN
ALL THE WAY!

**Look for this world-famous line-up
of good grooming products by**

MENNEN

GREATEST NAME IN GOOD GROOMING SINCE 1879



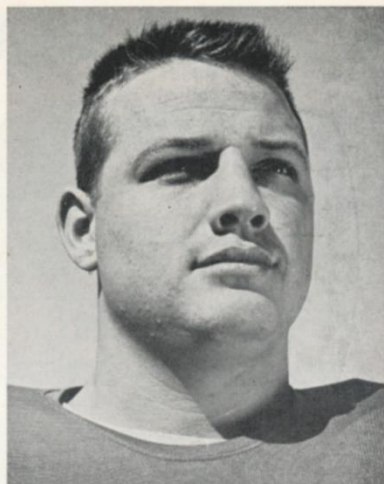
*Plus Fed. Tax

YOU undoubtedly have asked or been asked "What do these guys (meaning pro football players) do when they're not clobbering each other out there?"

Running down the Giant roster numerically, here's your answer. (Over the pleas of the salesmen and public relations men, name brands are omitted, for lack of space.)

Agajanian—Operates sporting good shop. **Heinrich**—Will sell anything. **Clatterbuck**—Insurance claims adjustor. **Gifford**—Actor, TV performer, sports writer, business entrepreneur. **Patton**—U. S. Department of Agriculture inspector. **Crawford**—Completing work toward master's degree in physical education.

Bookman—Public relations man for brewery. **Nolan**—Holds regional sales franchise for vacuum cleaners and other appliances.

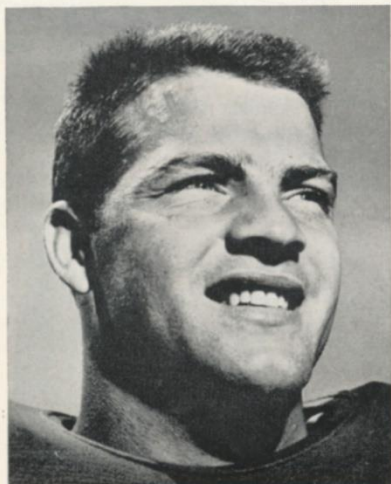


SAM HUFF

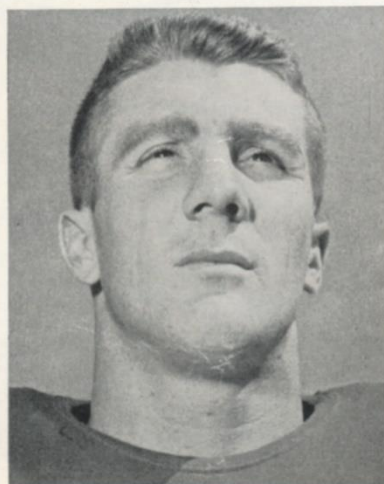


ANDY ROBUSTELLI

What the Giants Do



FRANK GIFFORD



ALEX WEBSTER

Webster—Salesman, last with freight line. **Svoboda**—"Rough neck" work on off-shore oil-drilling rig. **Triplett**—Recreation director. **Chandler**—Sells insurance.

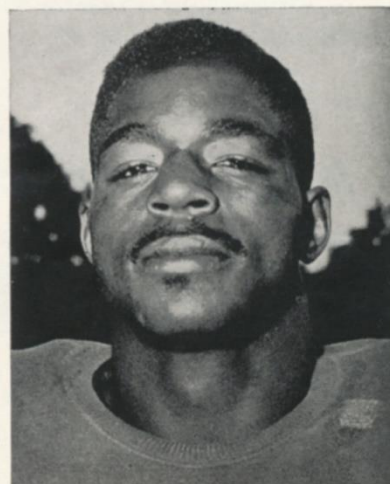
Epps—Army lieutenant previously, now will begin civil engineering career. **Filipski**—Studying dentistry. **Conerly**—Cotton and cattle farmer. **Rote**—TV sports commentator, semi-pro song writer, operates general insurance agency. **Tunnell**—Public relations man for brewery. **Hughes**—Engineering trainee with utilities company.

Wietecha—Tavern operator. **Austin**—Sells petroleum products. **Beck**—Co-operator of trucking business with brother. **Stroud**—Salesman in assorted lines, aids father in general contracting business. **Spinks**—Constable, specializing in investigation. **Huff**—Furniture salesman, may also teach industrial arts and physical education in high school.

Yelvington—Beach patrol supervisor. **Katcavage**—Army up to now, ready to begin industrial management career. **Modzelewski**—Regional sales representative for brewery. **Yowarsky**—Restaura-

teur in Cleveland. **Brown**—Physical education instructor at Morgan State College. **MacAfee**—Public relations work with advertising agency, on brewery account.

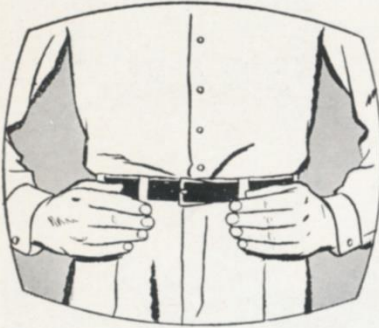
Robustelli—Operates two sporting good shops, conduct summer day camp. **Martinkovic**—Automobile salesman. **Svare**—Youth guidance work, considering shift to sales field. **Schnelker**—Teaches mathematics and physical education in high school. **Livingston**—Skilled carpenter, works in family building contractor business.



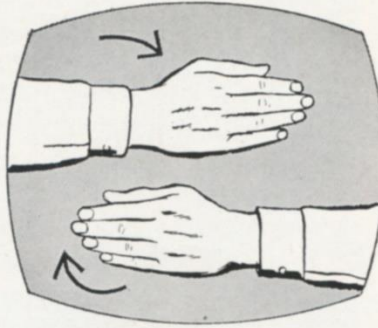
ROSIE BROWN

PLEASE USE ENTRANCE RAMP NEAREST YOUR SEAT

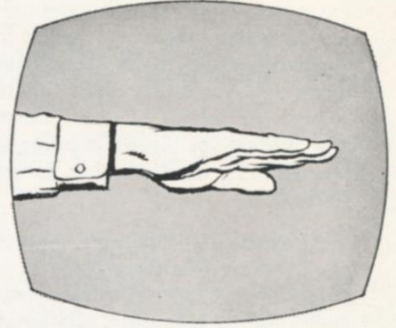
DO YOU KNOW YOUR SIGNS?



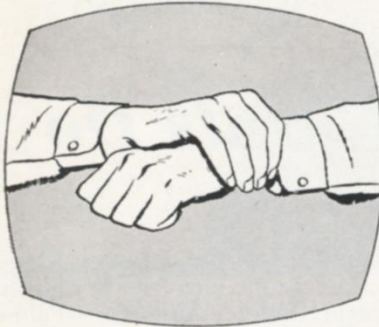
Arms akimbo signal flashed to indicate team off-side.



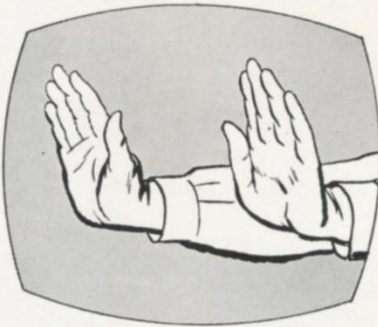
Signal used for illegal position or procedure.



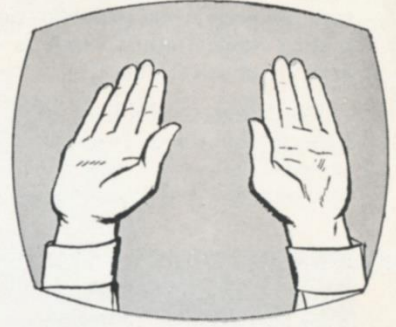
Offensive team charged with illegal motion or shift.



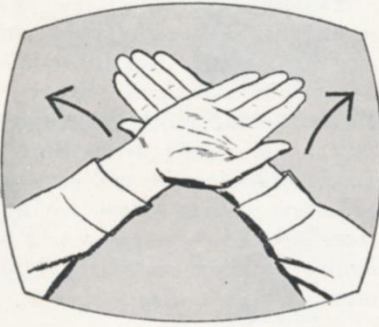
This signal means illegal use of hands or arms.



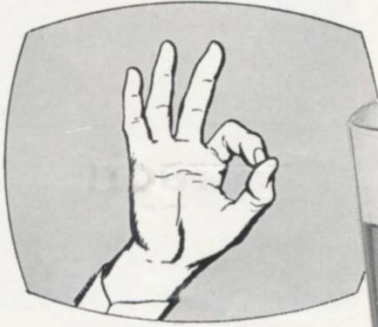
Signal for forward pass or kick catching interference.



Familiar signal for touch-down or field goal.



Team — or official — calls for time out.



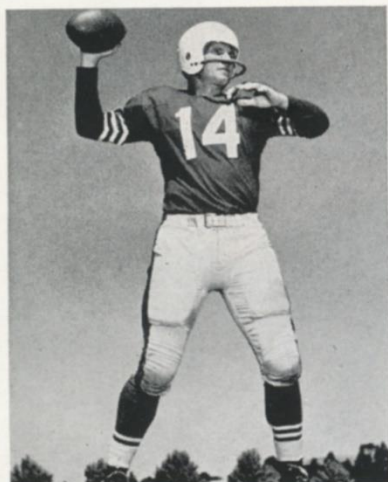
Fan calls for Ballantine's famous real beer flavor — the liveliest taste in town!

Ask the man for
Ballantine beer
 YOU'LL BE SO GLAD YOU DID!



P. BALLANTINE & SONS, NEWARK, N. J.

Next the Forty-Niners!



Y. A. TITTLE

San Francisco's colorful Forty-Niners, the National Football League's Western Conference leaders, will be at the Stadium two weeks from today to do battle with the Giants.

Coached by Frankie Albert, one of football's greatest quarterbacks, the Golden Gaters feature an explosive attack. No team in the league has greater long-range striking power.

The amazing Yelverton Abraham Tittle, who first thrilled Sta-



CLYDE CONNER

dium fans a decade ago, still is pitching pinpoint passes for the Forty-Niners. He's a daring, go-for-broke thrower whose effectiveness is enhanced by his exceptionally deceptive ball-handling.

As his principal receiver, Tittle has the fleet and nimble Clyde Conner, who has ranked among the league's leading pass-catchers since the start of the season.

The big wheel of the San Francisco running attack is Hurrying Hugh McElhenny, who has been one of pro football's hungriest ground-devourers for six years.

Other San Francisco stars include John Brodie, Stanford's 1956



HUGH McELHENNY

All-America quarterback; J. D. Smith and R. C. Owens, a couple of speedy halfbacks unburdened by first names; Leo Nomellini, Bob Toneff, Frank Morze and Bob St. Clair, a half-ton quartet of linemen, and Gordy Soltau and Billy Wilson, two dazzling ends.

This game will present Stadium fans with their only opportunity to see a Western Conference team. As things now stand, the Forty-Niners are *the* Western Conference team. Don't miss this one!

Coming Giant Attractions at Stadium

GAME 5—DEC. 1

SAN FRANCISCO

FORTY-NINERS

with

Y. A. TITTLE

HUGH McELHENNY

CLYDE CONNER

GAME 6—DEC. 15

CLEVELAND BROWNS

with

JIMMY BROWN

TOMMY O'CONNELL

LOU GROZA

**TICKET
PRICES:**

\$5.00

**BOX
SEATS**

\$4.00

**RESERVED
SEATS**

Here's Where to Buy Tickets in Person

YANKEE STADIUM

161st St. and River Ave.

Bronx, N. Y.

Mon.-Sat., 9-5 P.M.

YANKEE TICKET OFFICE

North Mezzanine

Grand Central Station

Mon.-Fri., 10-6 P.M.; Sat., 10-4

OR

DAVEGA STORES

Jamaica—163-24 Jamaica Avenue

Hempstead—45 Main Street

Newark—110 Market Street

Hackensack—325 Main Street

White Plains—175 Main Street

OTHER OUTLETS

ANDY ROBUSTELLI'S SPORTS SHOPS
in Stamford and Cos Cob, Conn.

ADDRESS ALL

MAIL ORDERS TO:

TICKET MANAGER

NEW YORK FOOTBALL GIANTS

10 Columbus Circle

New York 19, N. Y.

(Add 50c for mailing and handling)

Make check or money order payable: NEW YORK FOOTBALL GIANTS, INC.

Tickets Now on Sale at Advance Sale Windows in Main Lobby

MM-M-M—
LOVE THAT FLAVOR!



HAVE A REAL CIGARETTE— HAVE A Camel



Discover the difference between
“just smoking”... and Camels!

No fads or fancy stuff in this cigarette—simply the finest taste in smoking. The exclusive Camel blend of quality tobaccos has never been equalled for *smooth* smoking. Try the good, rich flavor of Camels, the largest-selling cigarette today. They've really got it!

R. J. Reynolds Tobacco Company, Winston-Salem, N. C.

THANK YOU! Les Keiter

Q—Where did your sportscasting career actually begin?

A—If you mean my first experience in commercial radio, I did my very first "mike" job the month I graduated from the University of Washington in Seattle, July 1941, with Station KGA, Spokane, Washington. Actually, though, I planned to forge a broadcasting career, with the emphasis on sports, as a youngster. In fact, at the age of 9 I broadcast my first baseball game... a make-believe re-creation in front of my pals as a campfire skit at a summer YMCA camp!

Q—Did you participate in sports as an athlete in high school or college?

A—Yes, most actively, although my success fell somewhat short of All-American or All-Anything caliber. It smacked of All-Scrub! Actually, I played both baseball and football all through school, with a broken shoulder ending my gridiron career after earning Frosh numerals at Washington. As for baseball, I once dreamed of hitting homers in the majors, but when college pitching proved



LES KEITER

my undoing (I hit 'em long-and-seldom!) I decided to grab a mike instead of a bat.

Q—In addition to your calling the Giants play-by-play for the second year, what other sports have you broadcast?

A—In my three and one-half years here in New York, with WINS, I've handled the Knickerbockers, the Yankee pre-and-post shows; aired the fights from East-

ern Parkway for a year; telecast golf for ABC-TV, and done some one-shots like the Gold Cup Boat Race at Detroit and the St. Louis Hawks-Boston Celtics NBA championship last spring. Before coming East, I spent four years in San Francisco, airing two major league re-creations daily, and covered the Pacific Coast Conference football and basketball games, both in SF and for the now-defunct Liberty Broadcasting System.

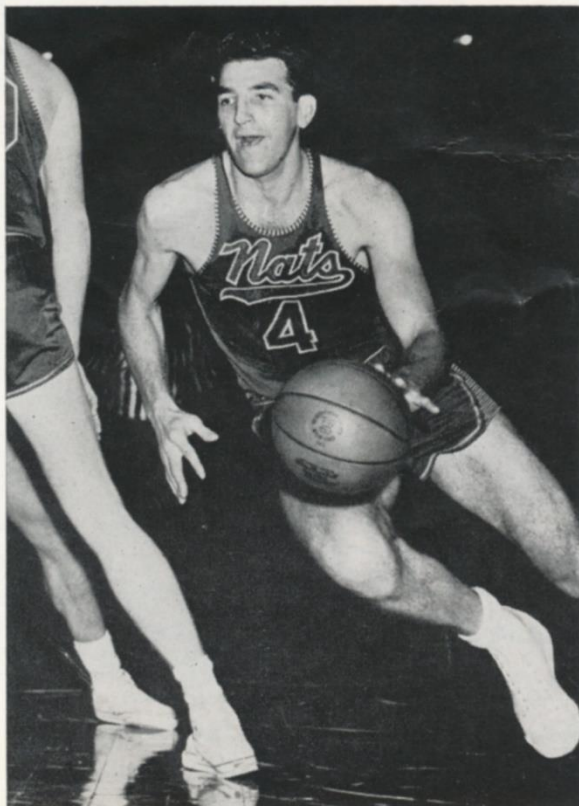
Q—You said you started in 1941...then you have been airing sports for 16 years?

A—Yes, though I was "out-of-action" with a 4-year Navy hitch during World War II...and I did get in six months in charge of the AFRS station on Peleliu Island in the Pacific.

Q—Speaking of the Pacific, weren't you also in Hawaii doing sports on the air?

A—I spent two years in Honolulu in 1949 and 1950, covering everything from major league ball to high school and college football and basketball, and weekly box-

(Continued on page 17)



DOLPH SCHAYES, Syracuse Nationals

Pro Basketball Madison Square Garden

This Saturday Night

Syracuse Nationals

(With Adolph Schayes, Red Kerr, Earl Lloyd, Paul Seymour Togo Palazzi, Larry Costello, Bob Harrison)

vs.

New York Knicks

(Mel Hutchins, Charlie Tyra, Willie Naulls, Carl Braun Kenny Sears, Ron Sobie and Larry Friend)

FIRST GAME STARTS 7:15

Prices—\$4.50, \$3, \$2.50, \$2, \$1.50

Tickets on sale at Madison Square Garden box office. Mail orders promptly filled. Write Basketball Dept., Madison Square Garden, 307 W. 49th St. Add 25 cents for handling and mailing.



Crowning achievement

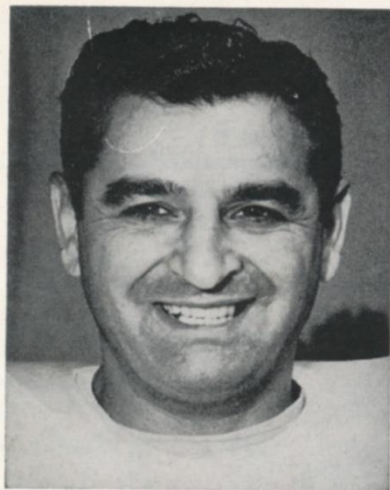
OF 100 YEARS OF CRAFTSMANSHIP !

With craftsmanship comes perfection. In a product... and in the pleasure it delivers. Your confidence in the unchanging quality of Seagram's 7 Crown has made it the most popular whiskey of our time... the American whiskey of the century.

Say Seagram's and be Sure
OF AMERICAN WHISKEY AT ITS FINEST

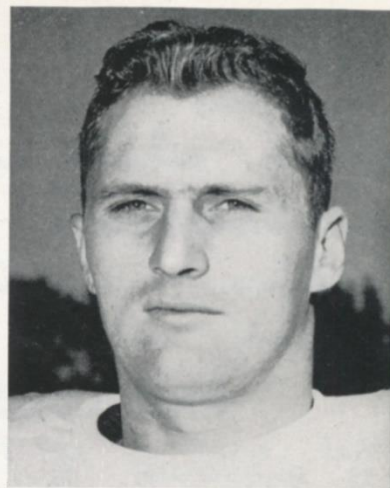
SEAGRAM-DISTILLERS COMPANY, NEW YORK CITY. BLENDED WHISKEY. 86 PROOF. 65% GRAIN NEUTRAL SPIRITS.

Giant Gallery



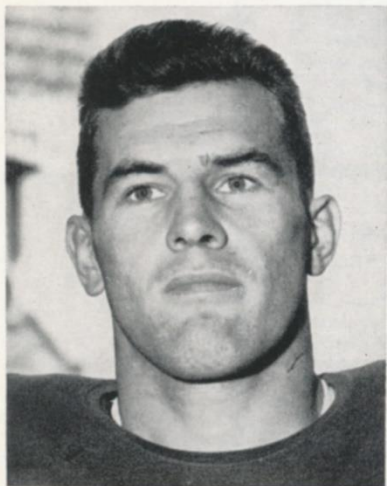
Ben Agajanian

Ben Agajanian (8), one of pro football's oldest active players at 38, has been booting field goals and extra points with unerring accuracy since 1944. Although a Giant for only 5 seasons, he ranks third among the club's all-time scorers. He set a Giant record by booting a 50-yard field goal against the Redskins this season. A resident of Long Beach, Calif., Ben is married and has four children.



Ken MacAfee

Ken MacAfee (80), the Giants' regular right end for the past four seasons, has earned the reputation of being one of football's most dangerous clutch pass-catchers. During his tenure with the Giants, he has averaged a touchdown for every fourth catch. One of the fastest Giants, he specializes in long gainers. A graduate of Alabama, Ken is married and has two youngsters.



Gene Filipski

Gene Filipski (40), an outstanding college back at Army and Villanova, was obtained from the Browns at the start of last season. He has served the Giants well as their No. 1 replacement at the offensive halfbacks and has provided many thrills for Stadium fans with his dare-devil punt and kick-off returns. With his wife and two children, makes his home in Philadelphia.



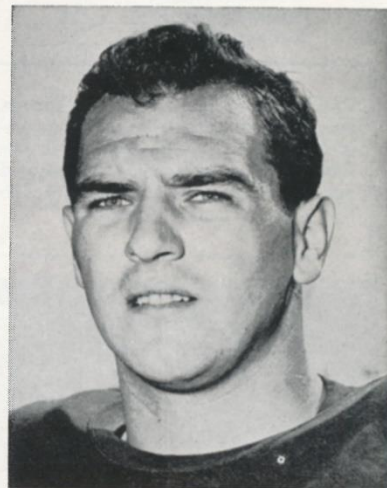
Dick Yelvington

Dick Yelvington (72), a product of Georgia, has been the Giants' regular offensive tackle for six seasons. A rugged 240-pounder who gets off the mark fast, his crisp blocking was a big factor in the Giants' drive to the NFL title last year. An off-season resident of Ormond Beach, Fla., he formerly worked as a diver for a salvage concern, now is a beach patrol supervisor.



Jack Stroud

Jack Stroud (66) has been a bulwark of the Giants' offensive line for five years. The deep-chested former All-America from Tennessee has the speed to get out ahead of the backs on wide plays and the power to make his straight-ahead blocks stick. His versatility makes him equally serviceable at guard and tackle. Married, with two children, lives in Knoxville.



Ray Wietecha

Ray Wietecha (55) played four positions—center, line-backer, defensive halfback and end—as a Giant rookie in 1953. The following season, the former Northwestern star was installed at offensive center. The Giant coaches rate him as the best pivotman in the NFL. He's a sharp-shooting blocker, who specializes in chopping down line-backers, and does a stalwart job of protecting the passer. Single, his home is in East Chicago, Ind.

AUTOGRAPH COLLECTORS: "Giant Gallery" is a weekly program feature.

PLEASE USE ENTRANCE RAMP NEAREST YOUR SEAT

Eagles on Offense

KICK-O
2:05 P.

R. H. Retzlaff (44) F. B. Peaks (26) Q. B. Thomason (11) L. H. Barnes (33)
R. E. Stribling (80) R. T. Gaona (71) R. G. Lansford (79) C. Simerson (53) L. G. Gibron (64) L. T. Youngelman (73) L. E. Walston (83)

Giants on Defense

L. E. Yowarsky (78) L. T. Modzelewski (77) M. G. Huff (70) R. T. Katcavage (75) R. E. Robustelli (81)
L. W. Hughes (48) L. L. B. Svoboda (30) L. S. Tunnell (45) R. S. Patton (20) R. L. B. Svare (84) R. W. Nolan (25)

PHILADELPHIA EAGLES ROSTER

No.	Player	Position	Weight	Height	Age	College	Yrs. Pro
9	Jurgensen, Sonny	QB	197	5:11	23	Duke	1
10	Dorow, Al	QB	188	6:00	27	Michigan State	4
11	Thomason, Bobby	QB	190	6:01	29	VMI	8
20	Harris, Jimmy	HB	180	6:01	22	Oklahoma	1
23	Keller, Ken	HB	188	5:11	23	North Carolina	2
25	McDonald, Tommy	HB	176	5:10	23	Oklahoma	1
26	Peaks, Clarence	HB	214	6:01	22	Michigan State	1
32	Worden, Neil	FB	195	5:10	26	Notre Dame	2
33	Barnes, Bill	HB	187	5:11	22	Wake Forest	1
36	Bielski, Dick	FB	217	6:00½	25	Maryland	3
40	Brookshier, Tom	HB	190	6:01	25	Colorado	3
41	Norton, Jerry	HB	196	5:11	26	SMU	4
42	Hudson, Bob	LB	227	6:04	27	Clemson	6
44	Retzlaff, Pete	HB	205	6:01	26	South Dakota State	2
45	Ryan, Rocky	HB	202	6:01	25	Illinois	2
53	Simerson, John	C	254	6:03	22	Purdue	1
60	Bednarik, Chuck	LB	235	6:03	32	Pennsylvania	9
63	Huxhold, Ken	G	235	6:01½	28	Wisconsin	4
64	Gibron, Abe	G	260	5:11	32	Purdue	8
65	Mavraides, Menil	G	230	6:01	25	Notre Dame	2
68	Koman, Bill	G	230	6:02	23	North Carolina	2
71	Gaona, Bob	T	240	6:03	26	Wake Forest	5
72	Richardson, Jess	T	275	6:03	27	Alabama	5
73	Youngelman, Sid	T	260	6:03	25	Alabama	3
74	Wydo, Frank	T	220	6:04	33	Duquesne-Cornell	11
75	Saidock, Tom	T	260	6:04	27	Michigan State	1
77	Weatherall, Jim	T	245	6:04	27	Oklahoma	3
78	Campbell, Marion	T	249	6:03	28	Georgia	4
79	Lansford, Buck	G	235	6:02	23	Texas	3
80	Stribling, Bill	E	208	6:01	29	Mississippi	6
81	Bell, Eddie	E	215	6:01	26	Pennsylvania	3
82	Scott, Tom	E	225	6:02	27	Virginia	5
83	Walston, Bobby	E	185	6:00	28	Georgia	7
84	Burnine, Hank	E	185	6:02	24	Missouri	2
86	Willey, Norman	E	225	6:03	30	Marshall	8

GIANT SPEC
PAT and FG—Agajanian
Gifford (34)
Punting—Chandler (34)
Kick-Offs—Chandler (34)

OFFICIAL
Rejere
Harry Brubaker (23), X
Unpir
Joseph Crowley 11

Head Line
Elvin Hutchison

Back Ju
John Tracy (25), X

Field Ju
Herman Rohrig (2)

EAGLE SPEC
PAT and FG—Walston
Punting—Norton (4)
Kick-Offs—Bielski (4)

EAGLE STAFF—Hugh J. Devore, Notre Dame, head coach; Steve Owen, Phillips, assistant coach; Frank Kilroy, Temple, assistant coach; Charles Gauer, assistant coach; Bobby Thomason, V. M. I., quarterback coach; Frank Wiechec, trainer; Fred Schubach, equipment manager; Dr. Thomas Dowd, physician; Dr. Francis Loftus, dentist.

The Official Watch for Timing Today's Game Is L

PLEASE USE ENTRANCE RAM

Enjoy it tonight!

Calvert



RESERVE

CK-OFF
05 P.M.

Giants on Offense

R. H. Webster (29) F. B. Triplett (33) Q. B. Conerly (42) L. H. Gifford (16)
R. E. MacAfee (80) R. T. Yelvington (72) R. G. Stroud (66) C. Wietecha (55) L. G. Beck (61) L. T. Brown (79) L. E. Rote (44)

Eagles on Defense

L. E. Scott (82) L. T. Weatherall (77) M. G. Campbell (78) R. T. Saidock (75) R. E. Willey (86)
L. W. Bell (81) L. L. B. Bednarik (60) L. S. Norton (41) R. S. Harris (20) R. L. B. Hudson (42) R. H. Brookshier (40)

SPECIALISTS

Aganianian (8), Chandler (34),
Gifford (16)
Conerly (34), Conerly (42)
Aganianian (8)

OFFICIALS

Referee
r (23), Loyola (L. A.)
Umpire
ley (11), Muhlenberg
d Linesman
chison (58), U. S. C.
ack Judge
(25), Xavier (Ohio)
ield Judge
hrig (27), Nebraska

SPECIALISTS

alston (83), Bielski (36).
ton (41).
ielski (36).

NEW YORK GIANTS ROSTER

No.	Player	Position	Weight	Height	Age	College	Yrs. Pro
8	Aganianian, Ben	E	215	6:00	38	New Mexico	9
11	Heinrich, Don	QB	180	6:00	26	Washington	4
12	Clatterbuck, Bob	QB	195	6:03	25	Houston	4
16	Gifford, Frank	B	205	6:01	27	Southern California	6
20	Patton, Jim	B	180	5:11	25	Mississippi	3
21	Crawford, Ed	B	185	6:03	23	Mississippi	1
22	Bookman, John	B	175	5:11	23	Miami (Fla.)	1
25	Nolan, Dick	B	180	6:01	25	Maryland	4
29	Webster, Alex	B	215	6:03	26	North Carolina State	3
30	Svoboda, Bill	LB	215	6:00	28	Tulane	8
33	Triplett, Mel	B	215	6:02	25	Toledo	3
34	Chandler, Don	B	205	6:02	22	Florida	2
35	Epps, Bobby	B	205	5:08	25	Pittsburgh	3
40	Filipski, Gene	B	185	5:10	26	Villanova	2
42	Conerly, Charles	QB	185	6:01	36	Mississippi	10
44	Rote, Kyle	B	205	6:00	29	Southern Methodist	7
45	Tunnell, Emlen	B	200	6:01	32	Iowa	10
48	Hughes, Ed	B	180	6:01	26	Tulsa	4
55	Wietecha, Ray	C	225	6:01	28	Northwestern	5
60	Austin, Bill	G	225	6:01	28	Oregon State	7
61	Beck, Ray	G	225	6:02	25	Georgia Tech	4
66	Stroud, Jack	G	240	6:01	28	Tennessee	5
68	Spinks, Jack	G	240	6:01	26	Alcorn A. and M.	4
70	Huff, Sam	LB	230	6:01	22	West Virginia	2
72	Yelvington, Dick	T	240	6:02	28	Georgia	6
75	Katcavage, Jim	E	230	6:03	22	Dayton	2
77	Modzelewski, Dick	T	260	6:00	26	Maryland	5
78	Yowarsky, Walt	E	235	6:02	29	Kentucky	6
79	Brown, Roosevelt	T	245	6:03	24	Morgan State	5
80	MacAfee, Ken	E	210	6:02	28	Alabama	4
81	Robustelli, Andy	E	230	6:01	29	Arnold	7
83	Martinkovic, John	E	245	6:03	30	Xavier	7
84	Svare, Harland	LB	215	6:00	26	Washington State	5
85	Schnelker, Bob	E	215	6:04	27	Bowling Green	5
89	Livingston, Cliff	E	215	6:03	27	U. C. L. A.	4

Is Longines—"The World's Most Honored Watch"

RAMP NEAREST YOUR SEAT

GIANTS STAFF: Jim Lee Howell, Arkansas, head coach; Vince Lombardi, Fordham, backfield coach; John Dell Isola, Fordham, line coach; Ken Kavanaugh, L. S. U., end coach; Tom Landry, Texas, defensive coach; John Johnson, Sid Moret and John Dziegiel, trainers; Dr. Francis J. Sweeny, physician; Dr. Arthur C. Croker, dentist.



Nothing finer
in American taste

CALVERT DISTILLERS CO., N.Y.C. • AMERICAN BLENDED WHISKEY • 86.8 PROOF • 65% GRAIN NEUTRAL SPIRITS

The Marlboro Man

**MARLBORO
BRINGS YOU
GIANTS'
GAMES
ON TV...**

See your local listing
for time and station

A lot of man... a lot of cigarette

"He gets a lot to like—filter, flavor, flip-top box." The works.

A filter that means business. An easy draw that's all
flavor. And the flip-top box that ends crushed cigarettes.

(MADE IN RICHMOND, VIRGINIA, FROM A PRIZED RECIPE)



About the Eagles



JIMMY HARRIS



TOMMY McDONALD

THE Eagles are in the midst of a rebuilding program that stamps them as one of the rising powers in the National Football League's Eastern Division. In fact, Coach Hugh Devore's efforts to bolster a team that had begun to run down already have had concrete results. The Birds have given every foe a real scrap and on Oct. 20 accounted for one of the season's most shocking upsets by handing the Cleveland Browns that team's first defeat.

Philadelphia's roster includes seven rookies and seven second-year pros, plus several acquisitions from other clubs. This new talent has infused the team with new life.

Washington boasts with reason of its fine crop of freshman backs. There are observers who believe that the Eagles have just as many good new backs as the Redskins.

Two newcomers—Bill Barnes, from Wake Forest, and Clarence (Hi) Peaks, from Michigan State—are the spearheads of a strengthened rushing attack. Both these boys are driving, slashing runners who have power and breakaway speed.

Another rookie, Sonny Jurgensen from Duke, has been doing a competent job of supporting the still-dangerous Bobby Thomason, now a player-coach, at quarterback.

Jimmy Harris and Tommy McDonald, of Oklahoma's 1956 national collegiate champions, have further brightened the Philadelphia backfield picture. Harris has won a regular berth on the defensive platoon at right safety. McDonald is an all-purpose performer, who fills in on both offense and defense and has distinguished himself as a kick returner.

Two new linemen have made the grade as regulars. They are

Tom Saidock, 260-pound defensive tackle from Michigan State, and John Simerson, 254-pound offensive center from Purdue.

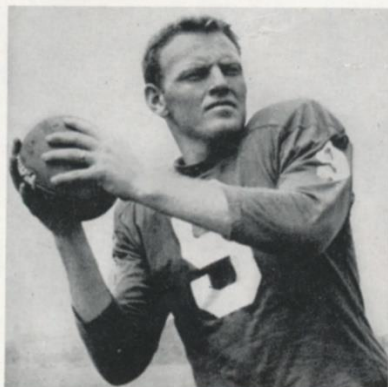
Along with these rookies and such sophomores as Neil Worden, Ken Keller, Pete Retzlaff and Menil Mavraides, who impressed last year, the Eagles have a sizable cadre of tried-and-true veterans.

Prominent in this group, besides the resourceful and imaginative Thomason, are Norm Willey and Tom Scott, as destructive a pair of defensive ends as there is in the league; Bobby Walston, mercurial pass receiver and place-kicking specialist, and Chuck Bednarik, still going strong as a linebacker in his ninth season.

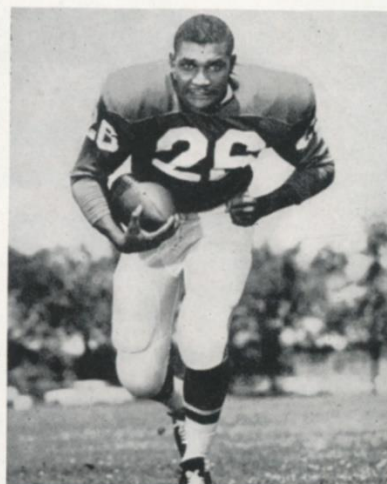
This is a team with a bright future and a pretty fair team right now!



BILL BARNES



SONNY JURGENSEN



CLARENCE PEAKS

PLEASE USE ENTRANCE RAMP NEAREST YOUR SEAT

MEN WHO KNOW THE SCORE...

Live in Elegance
...enjoy **Schenley**



THANK YOU! . . .

(Continued from page 9)

ing on the air . . . also handled the New Year's Pineapple Bowl Game in those years . . . incidentally, in the '50 Pineapple Bowl game, Eddie LeBaron first showed me his quarterback wizardry as his College of Pacific team annihilated the University of Hawaii, 75-0 . . . the previous year Stanford played and I'll never forget their winning touchdown—a 50-yard plus pass thrown by Bill McColl after a reverse—the same play we saw here at the Stadium in that 17-all tie with the Bears last year.

Q—Is your year-round sports enthusiasm shared in your own home out on Long Island, Les?

A—You bet! My wife, Lila, was a wide-eyed sports fan before I met her, and kept all my statistics for me before we started having our own "statistics." Our big boy, Rickey, who will be 7 this week, already does his own football broadcasts in the backyard and is Mickey Mantle's No. 1 booster in Roslyn, while our twins, Bobby and Marty, already have their favorite ball stars even though just in kindergarten.

Jottings on the Giants

Attention Giant fans! Alicia Landry, Tom Landry's wife, lost a charm bracelet, probably at the Stadium, on Oct. 27, when the Redskins were here. The bracelet doesn't have great intrinsic value. However, since the charms include souvenirs of Tom's participation in the Giants' championship victory of last year and the Orange Bowl game of 1949 with Texas, it means a lot to the Landrys. Its return will be greatly appreciated.

Once again . . . the new Giant office in the Coliseum Tower, 10 Columbus Circle, is not open on Saturdays. To buy Giant tickets on Saturdays, go to one of the other ticket outlets. They are Yankee Stadium, the Yankee ticket office in Grand Central Station, the Davega stores in Newark, Hackensack, Jamaica, Hempstead and White Plains and Andy Robustelli's sports shops in Stamford and Cos Cob.

Frank Gifford, oft honored in story, now also is honored in song. Tally Records of Bakersfield, Calif. (Frank's home town), has come out with a new "side" entitled "What a Boy!" The lyrics,

based on the gridiron achievements of Gifford, include this refrain:

*"In the game, he's a hero
When it's zero to zero,
He's who comes through.
What a boy!"*

Sandy Reid sings the song, which was jointly composed by Ralph Yaw and Georgie Starbuck Galbraith.

The Bergenfield (N. J.) High School Band will provide today's between-halves entertainment. This crack unit, directed by Dr. Bernard Baggs, performs annually in Macy's Thanksgiving Day Parade. Recommended: "Pro Football Highlights," presented each Tuesday at 8:30 P.M. and Thursday at 11 P.M. on Channel 11.

Bootin' Ben Agajanian completed the erasure of Ken Strong's place-kicking marks from the Giant record book last Sunday against the Cardinals. Already producer of the most Giant field goals (44) and the longest (50 yards), Ben now also has kicked the most extra points (149) and has the longest extra-point streak (69 in a row).

GULF OIL—BALLANTINE BEER—BEN-GAY

BOWERY SAVINGS BANK



Present

THE GIANTS

ON

WINS

1010 on Your Radio Dial

All Home and Away Games

PLAY-BY-PLAY BY LES KEITER

Touchdown!



KING-SIZE
FILTER

KOOL

the cigarette with the
SNOW-FRESH FILTER

Blocked by the hot cigarette habit? You can break that habit with refreshing Filter KOOL. KOOLS taste *clean* and *fresh* and *light* . . . the *snow-fresh filter* makes the menthol right! So, put yourself on the winning team, the KOOL team! Break the hot cigarette habit with refreshing Filter KOOL! Buy a carton today!

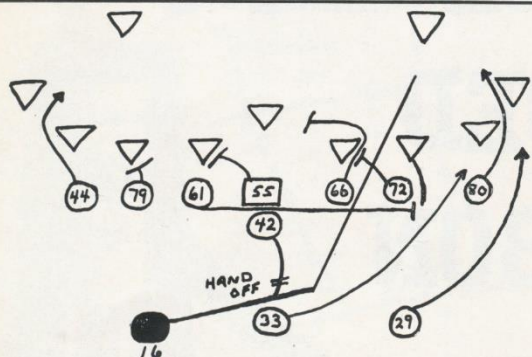
Giant Blackboard

YOU may have noticed that the Giants stayed in "regular" T formation, to use their nomenclature, for much of the time against the Cardinals last Sunday. In "regular" T, the two halfbacks and fullback keep abreast, three to four yards back, and except for the ends, who may edge out, the line stays reasonably tight.

Normal pro football procedure, you undoubtedly have observed, is to send out one back as a flanker and to split an end on the opposite side. Many teams, including the Giants on occasion, will flank both ends and post a back wide, too, in a "slot" position inside one end.

Using a wide attacking front spread the defense, isolating blocking targets and facilitating passes. However, it also disperses the attacking team's blocking power.

For a team good enough and brave enough to risk a direct challenge to the inevitable opposing 250-pound defensive rush line, there's still no stronger formation than the "regular" T. It would be used more if pro teams, necessarily conscious



of roster restrictions and extended schedules, could chance the physical attrition of continual frontal contact.

The beauty of "regular" T is that any play in the book can be run off it with maximum power and deception.

This basic formation's inherent strength plus his resolute and opportunistic running, put Frank Gifford in the spotlight last Sunday.

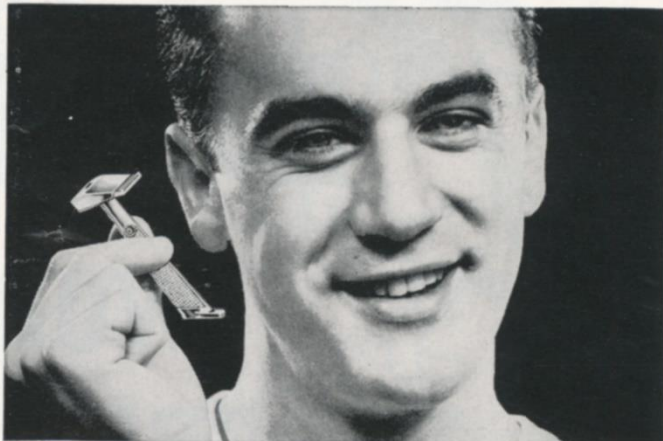
The Giants' dazzling left halfback was particularly effective on the "regular" T play that is digrammed here.

On this play, Gifford starts wide to his right, as if to sweep, then cuts sharply inside tackle. Yelvington (72), from right tackle, cross-blocks the defensive left guard and Beck (61), pulling out from left guard, trap blocks the defensive left tackle, who is permitted to come through, to open the hole. Stroud (66) shoots through from right guard to pick off the middle line-backer and Wietecha (55) cross blocks the right guard.

MacAfee (80) goes downfield from right end, and Triplett (33) and Webster (29) flare to the outside from fullback and right half, respectively, to divert the outside line-backer and corner-man from the point of contact.

This is just one of many strong plays the Giants run off "regular" formation. Gifford's pass-run option sweeps generally evolve from this set-up.

Greatest thing that's happened to men...since women!



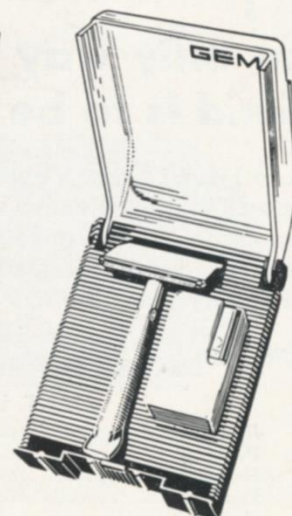
IT'S THE HEAVY, ALL-METAL **NEW GEM RAZOR** WITH FLAT-TOP DESIGN THAT HUGS YOUR CHEEK



AND ALWAYS HOLDS THE BLADE AT THE PERFECT ANGLE FOR A CLOSE, CLEAN SHAVE WITHOUT IRRITATION!

NEW GEM

**RAZOR WITH
FLAT-TOP DESIGN**



ONLY
\$1.00 WITH DISPENSER OF GEM BLADES
AND TRAVEL CASE

J. W. DANT

WORLD'S LARGEST SELLING BONDED BOURBON



I'm Newt Kook, President of the Dant Distillery. Down in Kentucky we have a saying:

"The only way to have a friend is to be one..."

And I don't know a better way of being a friend to so many as to give them so much for so little. My J. W. Dant genuine Kentucky sour mash bourbon does just that. No wonder it has made more friends the world over than any other Bond!

GIANT LEADERS

Rushing.....	Gifford: 91—390 yds.
Passing.....	Conerly: 72 of 131
Receiving.....	Gifford: 20—318 yds.
Scoring.....	Agajanian: 38 pts.
Punting.....	Chandler: 45.2-yd. avg.
Punt Returns.....	Filipski: 16—87 yds.
Kick-Off Returns.....	Patton: 8—193 yds.
Interceptions.....	Bookman: 2—54 yds.



1957 Giant Statistics

TEAM RECORD

GIANTS	OPP.	GIANTS	OPP.
57 1st downs rush.	42	162 Yds., interceptions	144
57 1st downs pass.	36	32 Punts	38
11 1st downs pen.	14	45.2 Punting average	
125 Total 1st downs	92	30 Punts returned	16
1095 Net yards rush.	855	116 Yds. punt ret.	171
1145 Net yards pass.	862	22 Kick-offs returned	26
19 Yds. lost, att. pass.	107	629 Yds. kick-off ret.	607
281 Rushing attempts	199	46 Penalties	24
148 Passing attempts	135	410 Yards penalized	238
81 Passes completed	60	15 Fumbles	17
8 Passes int. by	7	6 Opp. fumbles recov.	9

INDIVIDUAL RECORDS

RUSHING

	Att.	Yds.	L.G.	Avg.
Gifford	91	390	24	4.3
Webster	99	378	34	3.8
Epps	36	175	55	4.8
Triplett	34	117	13	3.4
Filipski	5	27	11	5.4
Conerly	8	15	12	1.8
Heinrich	1	1	1	1.0
Chandler	1	4	4	4.0
Clatter'k	3	0	0	0.0

RECEIVING

	No.	Yds.	TDs.	L.G.
Gifford	20	318	0	63
Webster	20	216	1	41
Schnel'r	14	275	5	66
Rote	14	182	2	24
MacAfee	6	106	2	28
Epps	6	37	0	12
Triplett	1	12	0	12

PASSING

	Att.	Comp.	Int.	Yds.	L.G.	TDs.	Pct.
Conerly	131	72	7	941	63	7	.549
Heinrich	9	3	0	41	28	0	.333
Gifford	6	4	0	143	66	2	.667
Clatterbuck	2	2	0	39	29	1	1.000

SCORING

	TD-R	TD-P	TDs.	PAT.	FG.	Pts.
Agajanian	0	0	0	20-20	11-6	38
Schnelker	0	5	5	0	0	30
Gifford	2	1	3	0	0	18
Webster	1	1	2	0	0	12
Rote	0	2	2	0	0	12
MacAfee	0	2	0	0	0	12
Bookman	1	0	0	0	0	6
Conerly	1	0	0	0	0	6
Heinrich	1	0	0	0	0	6
Huff	1	0	0	0	0	6
Patton	1	0	0	0	0	6
Tunnell	1	0	0	0	0	6

PUNT RETURNS

	No.	Yds.	L.G.
Filipski	16	87	17
Tunnell	6	16	6
Patton	7	16	7

INTERCEPTIONS

	No.	Yds.	L.G.
Tunnell	2	52	52
Patton	2	50	50
Bookman	2	54	31
Svoboda	1	0	0
Huff	1	6	6

PUNTING

	No.	Avg.	Lgst.
Chandler	32	45.2	61

KICK-OFF RETURNS

	No.	Yds.	L.G.
Filipski	14	336	41
Patton	8	193	33

Giant Picture Pack

Attention, Giant fans! Here's a collector's item for you. For just one dollar, you can get a complete set of Giant player pictures—autographed, 5 by 7 inch, glossy prints of all the stars and their thumbnail biographies. You can obtain this picture pack from Stadium vendors or at Stadium souvenir stands. Or send \$1 to Giant Pictures, P. O. Box 119, Brooklyn 1, N. Y.

easy
does
it



The Knowing New Yorker meets his expenses, pays his bills, by mail. You enjoy a lot of time and energy-saving benefits with a Special Checking Account. No required balance. Costs so little—is so convenient and safe. Monthly statements help keep your budget straight. Open a Special Checking Account now. All other banking services here, too.

See phone book for office
nearest you

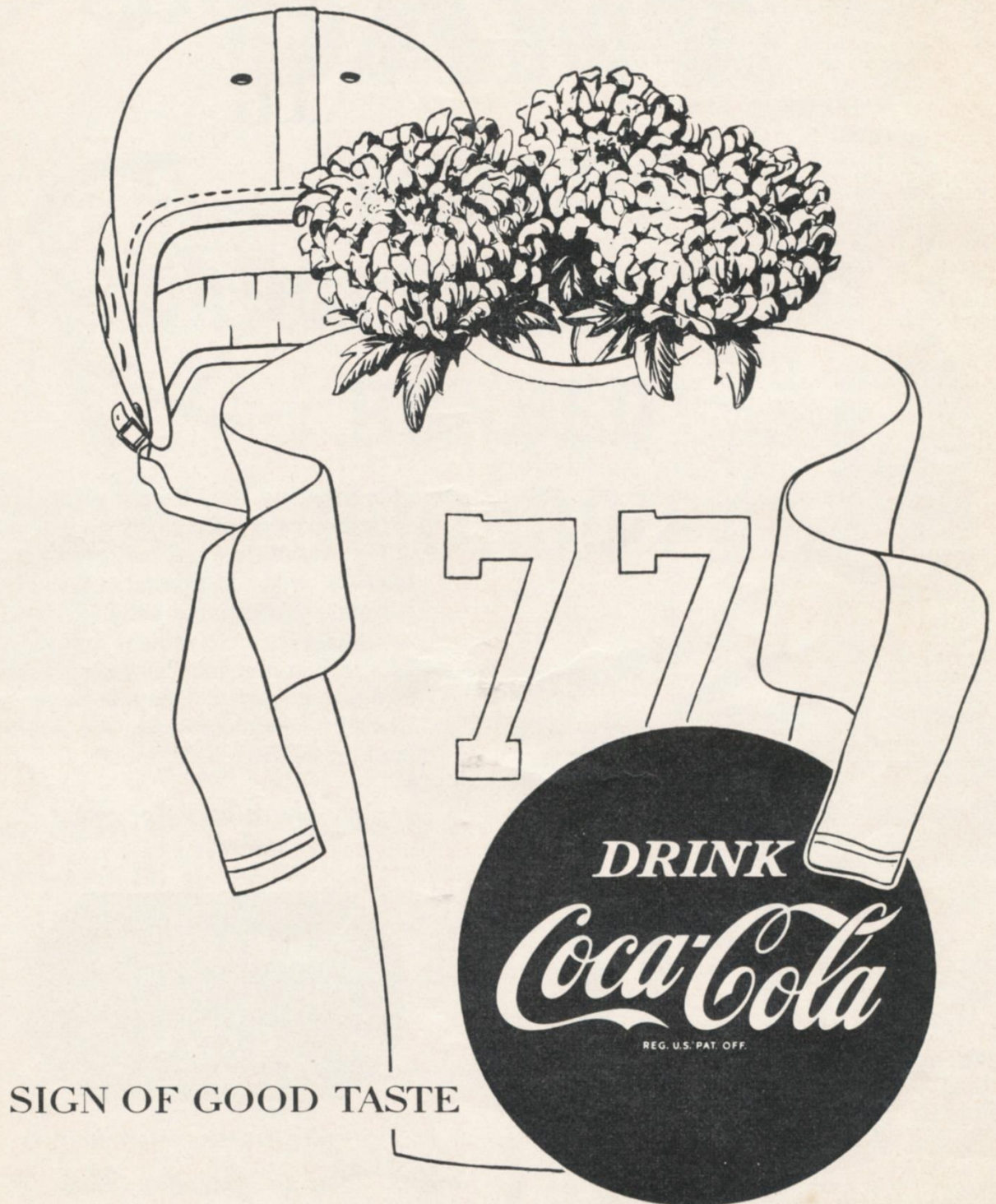


THE BANK THAT'S

Near You in Greater New York

Member Federal Deposit Insurance Corporation

All-America favorite ...ice-cold Coke



SIGN OF GOOD TASTE

"Coke" is a registered trade-mark.

NATIONAL LEAGUE OFFICIALS' SIGNALS



Offside



Crawling, Pushing,
Helping Runner



Illegal Motion



Illegal Pass



Unsportsmanlike
Conduct



Pass Interference



Holding, Illegal
Use of Hands



Personal Foul
(indication of
offense follows)



Delay of Game,
Excess Time-Out



Touchdown, Field
Goal, Extra Point



Safety



Loss of Down



Penalty Declined,
Incomplete Pass,
Missed Goal



First Down



Dead Ball



No Time-Out or
Time In with Whistle



Time-Out

THIRSTY?
have a
Knicker

Satisfy Your
beer thirst better



Knickerbocker

New York's Famous Beer

Ruppert Knickerbocker Beer, Jacob Ruppert, N. Y. C.

This Week's League Pairings

Home Team		Visiting Team		Home Team		Visiting Team	
NEW YORK		PHILADELPHIA		GREEN BAY		LOS ANGELES	
Won 5, Lost 2		Won 2, Lost 5		Won 2, Lost 5		Won 3, Lost 4	
3—Cleveland (a)	6	13—Los Angeles (a)	17	21—Chicago Bears	17	17—Philadelphia	13
24—Philadelphia (a)	20	20—New York	24	14—Detroit	24	20—San Francisco (a)	23
24—Washington (a)	20	7—Cleveland (a)	24	17—Baltimore	45	7—Detroit (a)	10
35—Pittsburgh	0	17—Cleveland	7	14—San Francisco	24	26—Chicago Bears (a)	34
14—Washington	31	0—Pittsburgh (a)	6	24—Baltimore (a)	21	35—Detroit	17
31—Green Bay (a)	17	38—Chicago Cards (a)	21	17—New York	31	10—Chicago Bears	16
27—Chicago Cards	14	16—Detroit	27	14—Chicago Bears (a)	21	37—San Francisco	24
—Philadelphia	—	—New York (a)	—	—Los Angeles	—	—Green Bay (a)	—
—Chicago Cards (a)	—	—Washington	—	—Pittsburgh (a)	—	—Cleveland (a)	—
—San Francisco	—	—Pittsburgh	—	—Detroit (a)	—	—Baltimore (a)	—
—Pittsburgh (a)	—	—Washington (a)	—	—Los Angeles (a)	—	—Green Bay	—
—Cleveland	—	—Chicago Cards	—	—San Francisco (a)	—	—Baltimore	—
158	108	111	126	121	183	152	137
WASHINGTON		CLEVELAND		CHICAGO BEARS		BALTIMORE	
Won 2, Lost 5		Won 6, Lost 1		Won 3, Lost 4		Won 4, Lost 3	
7—Pittsburgh (a)	28	6—New York	3	17—Green Bay (a)	21	34—Detroit	14
37—Chicago Cards (a)	14	23—Pittsburgh (a)	12	10—Baltimore (a)	21	21—Chicago Bears	10
20—New York	24	24—Philadelphia	7	17—San Francisco	21	45—Green Bay (a)	17
14—Chicago Cards	44	7—Philadelphia (a)	17	34—Los Angeles	26	27—Detroit (a)	31
31—New York (a)	14	17—Chicago Cards (a)	7	17—San Francisco (a)	21	21—Green Bay	24
17—Cleveland (a)	21	21—Washington	17	16—Los Angeles (a)	10	13—Pittsburgh	19
17—Baltimore	21	24—Pittsburgh	0	21—Green Bay	14	21—Washington (a)	17
—Cleveland	—	—Washington (a)	—	—Baltimore	—	—Chicago Bears (a)	—
—Philadelphia (a)	—	—Los Angeles	—	—Detroit (a)	—	—San Francisco	—
—Chicago Bears (a)	—	—Chicago Cards	—	—Washington	—	—Los Angeles	—
—Philadelphia	—	—Detroit (a)	—	—Chicago Cards (a)	—	—San Francisco (a)	—
—Pittsburgh	—	—New York (a)	—	—Detroit	—	—Los Angeles (a)	—
143	166	122	63	132	134	182	132
CHICAGO CARDS		PITTSBURGH		DETROIT		SAN FRANCISCO	
Won 2, Lost 5		Won 4, Lost 3		Won 4, Lost 3		Won 5, Lost 2	
20—San Francisco (a)	10	28—Washington	7	14—Baltimore (a)	34	10—Chicago Cards	20
14—Washington	37	12—Cleveland	23	24—Green Bay (a)	14	23—Los Angeles	20
20—Pittsburgh (a)	29	29—Chicago Cards	20	10—Los Angeles	7	21—Chicago Bears (a)	17
44—Washington (a)	14	0—New York (a)	35	31—Baltimore	27	24—Green Bay (a)	14
7—Cleveland	17	6—Philadelphia	0	17—Los Angeles (a)	35	21—Chicago Bears	17
21—Philadelphia	38	19—Baltimore (a)	13	31—San Francisco (a)	35	35—Detroit	31
14—New York (a)	27	0—Cleveland (a)	24	27—Philadelphia (a)	16	24—Los Angeles (a)	37
—New York	—	—Green Bay	—	—San Francisco	—	—Detroit (a)	—
—Cleveland (a)	—	—Philadelphia (a)	—	—Chicago Bears	—	—Baltimore (a)	—
—Chicago Bears	—	—New York	—	—Green Bay	—	—New York (a)	—
—Philadelphia (a)	—	—Washington (a)	—	—Cleveland	—	—Baltimore	—
—Pittsburgh	—	—Chicago Cards (a)	—	—Chicago Bears (a)	—	—Green Bay	—
140	172	94	122	154	168	158	156

NATIONAL LEAGUE LEADERS

RUSHING

1. Wilson, Los Angeles	99—501 yds.
2. Brown, Cleveland	115—464 yds.
3. McElhenny, San Francisco	94—252 yds.

PASSING

1. O'Connell, Cleveland	42 of 70—703 yds.
2. LeBaron, Washington	51 of 94—871 yds.
3. Unitas, Baltimore	90 of 157—1285 yds.

RECEIVING

1. McLaren, Pittsburgh	31—397 yds.
2. Conner, San Francisco	30—412 yds.
3. Berry, Baltimore	26—483 yds.

SCORING

1. Blanda, Bears	48 pts.
2. Matson, Cardinals	42 pts.
2. Mutscheller, Baltimore	42 pts.

NATIONAL LEAGUE STANDINGS

EASTERN CONFERENCE

	W.	L.	T.	Pct.	Points For	Points Agst.
Cleveland	6	1	0	.857	122	63
NEW YORK	5	2	0	.714	158	108
Pittsburgh	4	3	0	.571	94	122
Chicago Cards	2	5	0	.286	140	172
Philadelphia	2	5	0	.286	111	126
Washington	2	5	0	.286	143	166

WESTERN CONFERENCE

San Francisco	5	2	0	.714	158	156
Baltimore	4	3	0	.571	182	132
Detroit	4	3	0	.571	154	168
Chicago Bears	3	4	0	.429	132	134
Los Angeles	3	4	0	.429	152	137
Green Bay	2	5	0	.286	121	183

PLEASE USE ENTRANCE RAMP NEAREST YOUR SEAT

SITTING PRETTY



*"My master
prefers
Melrose"*

If pleasure is your goal, put Melrose Rare in your drink and you'll really be sitting pretty with "the very best"! What makes Melrose so *Rare*? It's mellowed with superb whiskies seven years old...*more, older, finer* whiskies than any leading blend!

There's nothing to compare with

MELROSE

RARE



NATIONAL LEAGUE LEADERS

Rushing.....	Wilson, Los Angeles.....	99 for 501 yds.
Passing.....	O'Connell, Cleveland.....	42 of 70 for 703 yds.
Receiving.....	McLaren, Pittsburgh.....	31 for 397 yds.
Scoring.....	Blanda, Bears.....	48 pts.
Punting.....	Chandler, Giants.....	45.2-yd. avg.
Punt Returns.....	Scudero, Washington.....	9 for 84 yds.
Kick-Off Returns.....	McIlhenny, Green Bay.....	7 for 218 yds.
Interceptions.....	Butler, Pittsburgh.....	8 for 70 yds.



BLENDED WHISKEY, 90 PROOF. 40% STRAIGHT WHISKIES, 60% GRAIN NEUTRAL SPIRITS. MELROSE DISTILLERS COMPANY, NEW YORK

Live Modern

Free up! Get more out of life . . .
get more out of smoking!



Light into that
Live Modern flavor!

Smoke today's most exciting cigarette...L&M!
Only L&M gives you "Live Modern" flavor...the full,
exciting flavor that means *more* taste...more aroma!
Every L&M pack ever made has carried this state-
ment: "A blend of premium quality cigarette tobaccos
including special aromatic types."

L&M lets you pick the pack that suits you best!



©1957
Liggett
& Myers
Tobacco Co.

HANDY PACKS (King and Reg.)

CRUSH-PROOF BOX (Costs no more)