

YANKEE STADIUM

OFFICIAL PROGRAM • 50 CENTS



N.Y.

GIANTS

VS.

PITTSBURGH

STEELERS

OCTOBER 26, 1958



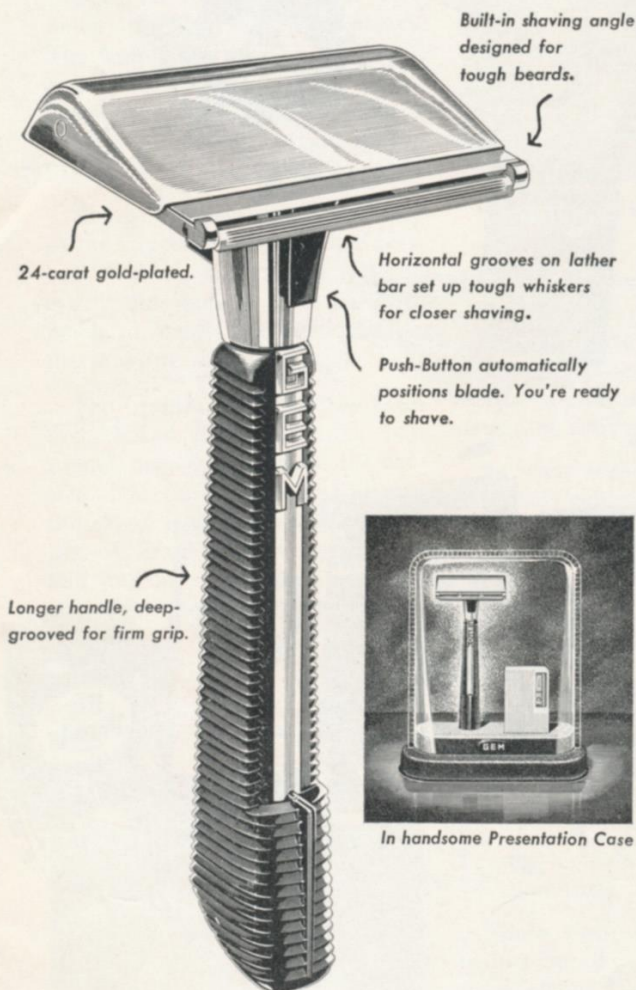
Pick
your
pleasure

PHILIP MORRIS INC.

The
Quality  *House*

Marlboro pack or box • Philip Morris pack or box • Parliament pack or box • Benson & Hedges cigarette case box

GEM INTRODUCES PUSH-BUTTON RAZOR FOR MEN WITH TOUGH BEARDS

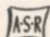


There's never been a razor like the new Gem Push-Button Razor. Teamed up with extra-heavy, extra-sharp Gem Blades, it's the most powerful combination in history for shaving tough beards. Get tough with your tough beard—get the new Gem Push-Button Razor in the handsome Presentation Case today.

Avoid '5 o'clock shadow' with Gem.

\$1.00

Handsome Presentation Case contains Gem Push-Button Razor and Blades in Dispenser . . .

PRECISION  PRODUCTS

OFFICIAL PROGRAM

NEW YORK



GIANTS

vs. PITTSBURGH STEELERS

YANKEE STADIUM • Oct. 26, 1958

Volume 33

Number 2

CONTENTS

Today's Another Day	3
Giant Profile: Jim Patton	5
Giant Album	7 and 13
Coming Attractions	9
Jottings on the Giants	11
Giants' 1958 Statistics	15
Steelers' Roster and Line-up	16
Giants' Roster and Line-up	17
Looking Over the Steelers	19
Yankee Stadium Services	21
Steeler Stars	23
Giant-Steeler Series	25
N. F. L. Officials' Signals	27
Giant Blackboard	29
N. F. L. Statistical Leaders—1943-58	31
Today's Pairings, Team Record	32
N. F. L. Standings, Leaders	32

NEW YORK FOOTBALL GIANTS

John V. Mara *President-Treasurer*
Wellington T. Mara *Secretary*
Raymond J. Walsh *General Manager*

Jim Lee Howell *Head Coach*
Vince Lombardi *Offensive Coach*
Tom Landry *Defensive Coach*
John Dell-Isola *Line Coach*
Ken Kavanaugh *End Coach*

John Johnson, Sid Moret and John Dziegiel *Trainers*
Dr. Francis Sweeny *Physician*
Dr. Arthur Croker *Dentist*

Robert Daley *Publicity Director*

This book published by
HARRY M. STEVENS, Inc.
320 Fifth Avenue
New York 1, N. Y.



The "All-American" Team

The brands all America selects
for its smoking pleasure

Today's Another Day

EVERY year, when the National Football League campaign is about to get under way, Commissioner Bert Bell issues a statement to the effect that the league is so well-balanced that any team is capable of beating any other team on any given day.

Last Sunday's game between the Giants and the Cardinals is very much in point with this remark. The Giants had beaten the Cardinals, 37-7, at Buffalo three weeks previously. Presumably, playing at home, the New Yorkers should have even an easier time of it.

Things just don't work that way in the rugged pastime of pro football. There's so much ability on every club that it does not take much to swing the pendulum in the opposite direction.

The Giants, affected by injuries that slowed down first-rank personnel, turned up cold for the contest. The Cardinals, certainly an improved team under the coaching of Frank Ivy, were red hot and put on a spectacular second-half drive that decided matters.

Naturally, Coach Jim Lee Howell and the rest of the Giant official family were not happy about this turn of affairs. On the



COMMISSIONER BERT BELL

other hand, they appreciate that a team just cannot stay "up" for every game of a schedule that, including pre-season exhibitions, embraces eighteen contests over a period of four months.

So, they sensibly dismissed the Cardinal game as "just one of those things" and bent their energy toward getting the Giants ready for today's meeting with the Steelers, another rising force, and the other games that lie ahead.

This still looks like a Giant team that will have more good days than bad. Despite Cleveland's present commanding lead, Jim Lee and his boys haven't given up hope that they will give the Browns a tussle for the Eastern Division title.

There were some bright spots in last Sunday's general gloom at the Stadium. Don Maynard, seeing

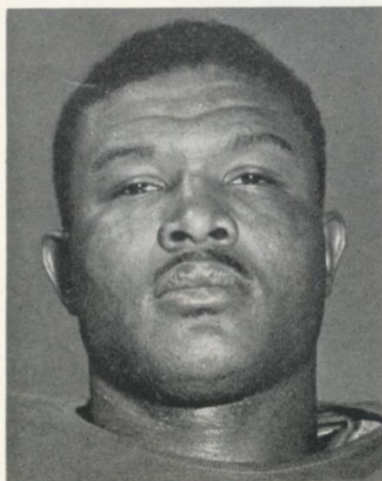
his first extensive service on offense after Frank Gifford's unfortunate knee injury, showed impressive speed as a ball-carrier and pass receiver.

Mel Triplett contributed another eye-catching exhibition of line-crashing. Ken MacAfee, who hadn't been much in evidence previously this season, indicated he still is as swift and elusive as ever as a pass-catcher.

Also, on a day when the Giant offensive platoon had trouble in holding the ball and keeping it moving, the defensive unit held the dike gamely under heavy pressure until the final stages of the contest.

Bill Svoboda, Sam Huff and Cliff Livingston, who filled in as right side linebacker in the absence of Harland Svare, distinguished themselves particularly, along with Andy Robustelli and Jim Patton.

We'll be disappointed—and so will they—if the Giants don't rebound vigorously today. On the other hand, don't forget those knowing words of Commissioner Bell. In this league, any team is capable of beating any other team on any given day.

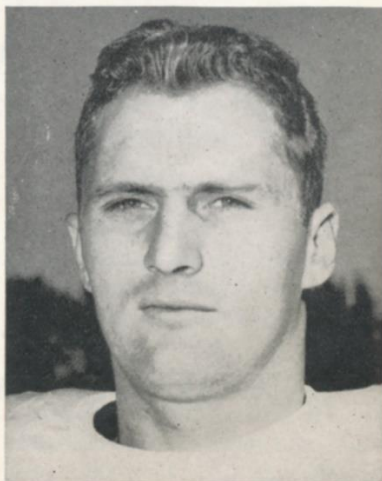


MEL TRIPLETT

GIANTS AT STADIUM

Oct. 26.....Pittsburgh Steelers
Nov. 9.....Baltimore Colts
Nov. 23.....Washington Redskins
Nov. 30.....Philadelphia Eagles
Dec. 14.....Cleveland Browns

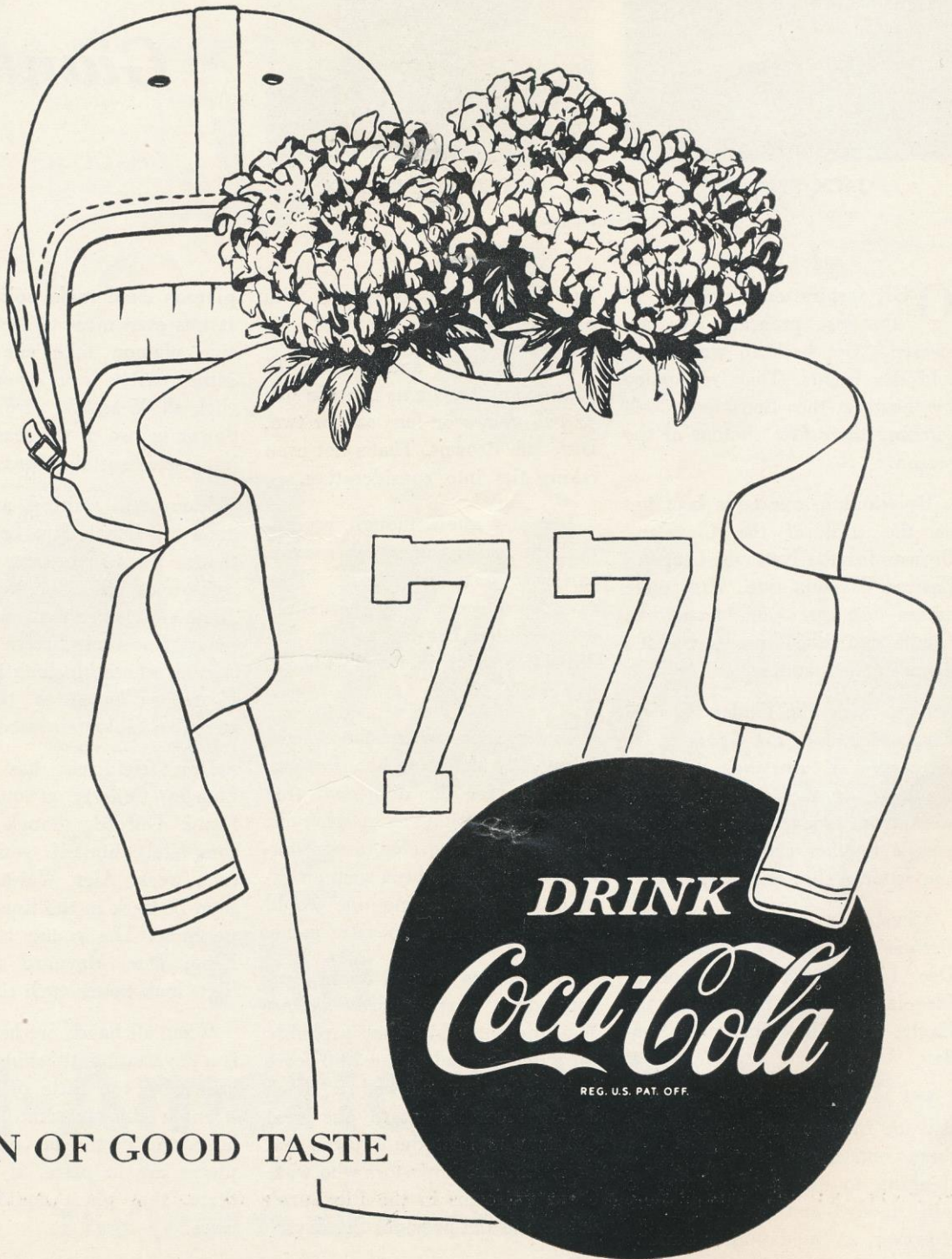
Kick-Off Time—2:05 P.M.



KEN MacAFEE

PLEASE USE ENTRANCE RAMP NEAREST YOUR SEAT

All-America favorite ...ice-cold Coke



SIGN OF GOOD TASTE

"Coke" is a registered trade-mark.

A Little Giant Who Plays Big

**Jim Patton, Only 180 Lbs.,
Is a Weighty Factor
On the Defense**

FOUR years ago a somewhat small rookie back named Jim Patton arrived in the Giants' training camp, determined to make the grade in pro football.

At Mississippi he had been the best defensive back in the Southeast Conference and Coach Jim Lee Howell, on a tour of the south one spring, saw Patton run a 100-yard dash in competition in 9.9 seconds.

Before he had been in camp a week, Patton had lost a head-to-head engagement with a 240-pound guard during a scrimmage. Groggy, he had been led to the dressing room to have four stitches taken in his lip.

"That sidelined me for a week," Jim recalls. "When I was ready to play again, they put me in on offense. I didn't think I could make the team, then. But I was determined to stick around until they cut me."

Nobody has cut the 26 year old Patton yet and they won't. He now is regarded as one of the best safety men in the National League, which means in the world.

As a rookie, Jim once beat Washington almost singlehandedly. Not only did he run the opening kick-off back 98 yards for a touchdown but he also later returned a punt 69 yards for another score. The Giants won 35-7.

The odds on running a kick-off all the way have been figured at 165 to 1, and a punt at 98 to 1. The odds on doing both in the same game are practically incalculable.

Patton remembers the punt runback as the easier of the two. "The punt was low and short and



JIM PATTON

I caught it on the dead run. There was an enormous alley up the middle. I was through there before anyone could stop me. Somebody grabbed my hand, but I jerked it away and kept running."

Patton, only 5-feet-10 and 180 pounds, also ran a pass interception 50 yards for a touchdown against the Steelers last year. "Earl Morrall, the passer, was the only one who could have stopped me but Harland Svare and Sam Huff took care of him. I just ran down the sideline."

As with so many Giants, Patton's big pro thrill was winning the world championship against the Bears in 1956, particularly

**"They Shall Not Pass"
Is Motto of Swift
Safety from Ole Miss**

since he had seemed the goat in an earlier game between the two teams.

The Giants were leading 17-3 with three minutes to go in that memorable game. "Dick Nolan and I had been pressing Harlon Hill, the Bears' end, all the way. On one play Dick would hit him and knock him off stride. On the next play I'd hit him. He couldn't get loose.

"With three minutes to go, I called off the press. The game seemed won and I said to Dick, let's play Hill loose now. All we have to do is keep him from getting behind us."

Hill quickly made one touchdown, catching a 75-yard pass on a fake end run which fooled the Giants completely. Seconds remained when the Bears got the ball again. Hill ran straight down the sideline with Patton tight on him all the way.

"I saw the ball coming and stuck out my hand. The ball was deflected off the top of my hand and I decided to tackle him and hope that he'd drop it. When I tackled him I knocked him forward and down to the level of the ball. I believe if I hadn't tackled him he never would have caught it."

That catch tied the score and represented Patton's biggest disappointment in football. He got even a few weeks later in the championship game, however, holding Hill scoreless, and practically catch-less.

Jimmy, who hails from Belzoni, Miss., is married, has two small sons, and works for the Department of Agriculture in the off season.

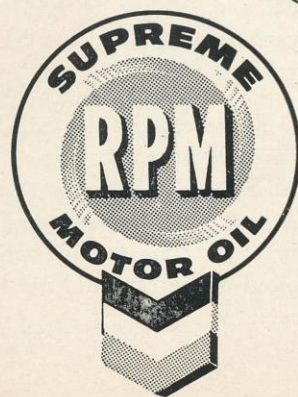


It's certainly O.K. with *us*, Hy Finn! Matter of fact, *most* of the American Motorists who've tried new CHEVRON Supreme Gasoline feel that way. So if *you* haven't discovered this outstanding super-premium gasoline yet, don't wait any longer. Make friends with CHEVRON Supreme and its great teammate, RPM Supreme Motor Oil, *yourself* — at any CALSO Station.

PRODUCTS OF THE CALIFORNIA OIL COMPANY



CHEVRON
SUPREME GASOLINE
At all CALSO stations!



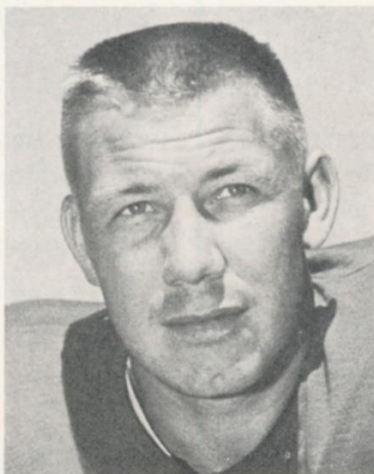
TM'S "CHEVRON," "RPM," CHEVRON DESIGN®

Giant Album



Char. Conerly

In a decade of stalwart service with the Giants, **Charley Conerly (42)** has won respect as one of pro football's great competitors. Going into this season, the former All-America from Ole Miss has thrown 134 TD passes. Only Sam Baugh (187) and Sid Luckman (139) had more. Originally a single-wing tailback, Charley has made himself over into a polished T quarterback.



Lindon Crow

Lindon Crow (41) is a new Giant but an old hand at pro football. An all-around star at USC, he was the Cardinals' No. 2 draft choice in 1955 and played regularly at defensive halfback for the Chicago South Siders for three seasons, leading the league in pass interceptions in 1956. The Giants got him, with Pat Summerall, for Dick Nolan and Bob Conrad last summer.



Pat Summerall

George Allen Summerall (88), more familiarly known as Pat, is a 7-year pro who came to the Giants from the Cardinals in a 1958 pre-season trade. A long-range place-kicking specialist whose 250 NFL points include field goals of 50 and 49 yards, he also is serviceable as a defensive end.



Frank Youso

Frank Youso (82), No. 2 on the Giants' 1958 draft list, is rapidly justifying his early selection. Rushed into action at right tackle on the offensive line, he has been more than pulling his 260-pound weight. Minnesota, which has sent a string of fine tackles to the Giants, was Frank's school.



Emlen Tunnell

After ten years of hell-for-leather defensive play, **Emlen Tunnell (45)** has retired from the regular Giant lineup. Over the years, there have been few more exciting defensemen than this blazing competitor from Iowa. Em set all manner of records and gained the fantastic total of 4,653 yards on punt, kick-off and interception returns.



Bob Schnelker

Bob Schnelker (85) has been a fixture at end for the Giants ever since they acquired him in a 1954 trade with the Eagles. The big blond from Bowling Green is a fast, powerful, sure-fingered pass-catcher, who is at his best under pressure. Going into this season he had grabbed 84 Giant passes, for 1448 yards and 16 TDs.

AUTOGRAPH COLLECTORS: Giant Album is a weekly feature

PLEASE USE ENTRANCE RAMP NEAREST YOUR SEAT

-- Guess which drink is better for you? --

Fizzless highball



1. Big feature, easy to make. Turn the tap, fill the glass. No longer socially acceptable, lacking in good taste.



2. What happened to the flavor of the liquor? A lifeless, bland drink.



3. Flat'er than a pancake! Wishy-washy... Your very best bet... start afresh.



4. Sparkling mixers save you money and trouble. Every drink tastes great... better for you too.

Sparkling highball



1. Big feature... delectable taste. Costs more than tap water... but worth 5 times as much... Why?



2. Makes a lively drink every time. Makes any liquor taste terrific!



3. The drink comes alive with flavor. Money saving... You bet! Why?



4. No wasted drinks... no disappointed drinkers. You're traveling first class with Canada Dry Mixers.

Research says: "Highballs with sparkling mixers are better for you"

Here's why—It's the lively bubbles!

- 1.** They speed the liquid through your system 80% faster than plain water.
- 2.** They aid your digestion.
- 3.** They curb unpleasant aftereffects.

Only Canada Dry Mixers have exclusive "Pin-Point Carbonation"—livelier, longer-lasting bubbles. Also superior flavor, from secret formulas, improve the taste of any liquor.



Colts Here on November 9



LENNY MOORE

The Giants go to Pittsburgh for a return game with the Steelers next Sunday. Then, two weeks from today, it's back to the Stadium for one of the big events of the season—their first game in three years with the frisky Baltimore Colts.

Away winging, the Colts won their first three games and shape up as a prime contender for the Western Division title. Coach Weeb Ewbank has done a tremendous rebuilding job and the Baltimore entry, improving each year, now rates as one of the Na-

tional League's top powers.

The Colts have a specially dynamic attacking unit. They are two deep at quarterback, with Johnny Unitas, whose 2550 yards gained on 172 pass completions led the league last year and George Shaw, the dashing Oregon All-America who was out with a knee injury in 1956-57.

These sharpshooters have two of the best receiving ends as targets. They are Ray Berry and Ray Mutscheller, who snagged 79 passes and scored 14 touchdowns between them in 1957. At last look, Berry was the league's top 1958 receiver.

Baltimore's backfield also fea-



RAY BERRY

tures breakaway runners. L. G. Dupre and Leonard Lyles, a rookie 9.5-second sprinter, at left half; Lenny Moore, Penn State will-o'-the wisp, and Jack Call, at right half, and big Alan (The Horse) Ameche, at fullback, need only a peek of daylight to be off to the races.

A big, rugged defensive unit is headed by Arthur Donovan Jr., son of the famous boxing referee and a perennial all-league tackle.

This game is a "must" for those who like football at its entertaining best. Don't miss it!



JOHNNY UNITAS

Coming Giant Attractions at Stadium

GAME 3 NOV. 9	BALTIMORE COLTS <i>with Lenny Moore</i>
GAME 4 NOV. 23	WASHINGTON REDSKINS <i>with Eddie LeBaron</i>
GAME 5 NOV. 30	PHILADELPHIA EAGLES <i>with Norm Van Brocklin</i>
GAME 6 DEC. 14	CLEVELAND BROWNS <i>with Jimmy Brown</i>

TICKET PRICES:

\$5.00

BOX SEATS

\$4.00

RESERVED SEATS

Here's Where to Buy Tickets in Person

YANKEE STADIUM
161st St. and River Ave.
Bronx, N. Y.
Mon.-Sat. 9-5 P.M.

YANKEE TICKET OFFICE
North Mezzanine
Grand Central Station
Mon.-Fri., 10-6 P.M.; Sat., 10-4

OR DAVEGA STORES

Jamaica—163-24 Jamaica Avenue
Hempstead—45 Main Street

Hackensack—325 Main Street
White Plains—175 Main Street

Newark—110 Market Street

OTHER OUTLETS

ANDY ROBUSTELLI'S SPORTS SHOPS
in Stamford and Cos Cob, Conn.

ADDRESS ALL MAIL ORDERS TO:

TICKET MANAGER
NEW YORK FOOTBALL GIANTS
10 Columbus Circle
New York 19, N. Y.

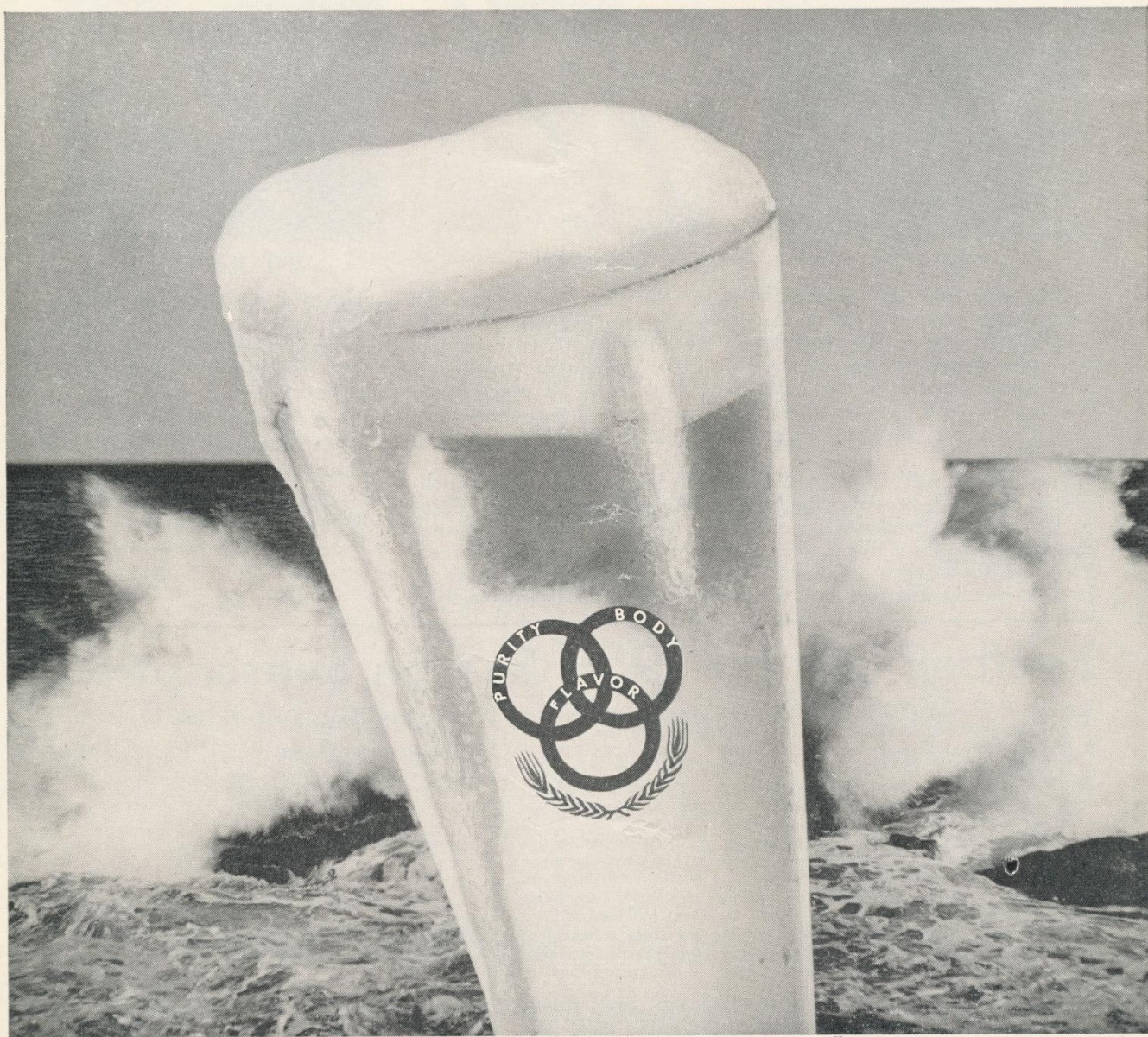
(Add 50c for mailing and handling)

Make check or money order payable: NEW YORK FOOTBALL GIANTS, INC.

Tickets Now on Sale at Advance Sale Windows in Main Lobby



Hey, getcha cold beer
Hey getcha Ballantine!



® Is a Reg. T. M. of P. Ballantine & Sons, Newark, N. J.

**the 'crisp'
refresher**



Now...largest-selling beer in the East!

Jottings on the Giants

TODAY'S between-halves entertainment will be supplied by the Irvington (N. J.) High School band. This crack marching musical organization, which is directed by Marlin H. Brinser, is an old favorite of Giant fans. It returns to the Stadium after a year's absence . . . Recommended viewing: Pro football highlights on WPIX, TV Channel 11, at 10 P.M. Tuesdays. This program presents a fast-moving review of the previous Sunday's pro games, including those played by the Giants and their upcoming opponents. It's a must for all fans who want to stay on top of developments in pro football.

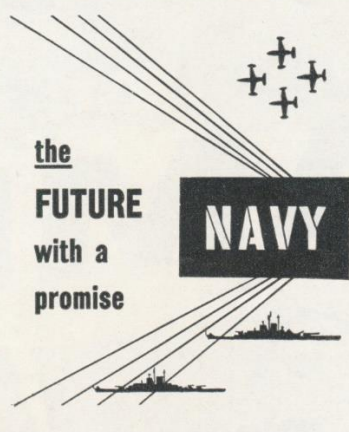
They're beginning to refer to the Giant dressing room as "the tepee." Phil King, Lindon Crow, Pat Summerall and Charley Conerly (this is a scoop, brought to light eleven years after Chuck's advent on the pro football scene) all had Indian antecedents. It might be added, to abuse an old saw, that while the men in question may be part Indian, they are all football players.

Em Tunnell's elevation to the starting defensive line-up last Sunday preserved a streak for the pride of Garrett Hill, Pa. It marked the eleventh straight home Giant opener in which Em was in action when play began . . . Attention New Jersey fans: Public Service will run busses to the Stadium for all Giant home games. They leave from Newark and

Elizabeth at 12:15 P.M. and from Paterson at 12:30 P.M.

Johnny Lujack has been receiving a lot of compliments for the splendid job he has been doing as back-up announcer to Chris Schenkel on the Giant road telecasts. The former Notre Dame and Chicago Bear quarterback has a wonderful sense of timing. At just the right point, he interjects various knowing observations that help viewing listeners get a clearer picture of developments on the field.

Don't forget the big Section Five Club dinner in honor of Giant coach Jim Lee Howell at the Concourse Plaza Hotel on the night of Nov. 30. Tickets may be obtained at Section Five Club headquarters in Room 229 at the Concourse Plaza. All the Giant players, club officials and many other sports celebrities will attend this gala affair, which follows the Giants' return game against the Philadelphia Eagles . . . Listen to "Giant Radio Huddle" on CBS each Thursday night at 10 P.M.



HOTEL MANHATTAN

HEADQUARTERS FOR
PROFESSIONAL TEAMS
IN NEW YORK CITY

New York's newest . . . Hotel Manhattan offers 1400 air-conditioned guest rooms, each with television and radio. Known as the "Home of Champions", this magnificent skyscraper hotel is ideally located in the heart of Times Square. Meet your friends at the Manhattan Bar or the new Playbill Room open daily for luncheon, dinner and supper.

Express Subway Trains Speed You to
Yankee Stadium from the Private
Subway Entrance of Hotel Manhattan

FRANK W. KRIDEL
Executive Vice President and General Manager



HOTEL
Manhattan
44TH TO 45TH STREETS
AT EIGHTH AVENUE • Judson 2-0300



I'VE ALWAYS TOLD
YOU, DOBERMAN, THE
BEST TOBACCO MAKES
THE BEST SMOKE!

BUT SARGE,
THAT WAS
MY LAST CAMEL
YA TOOK!

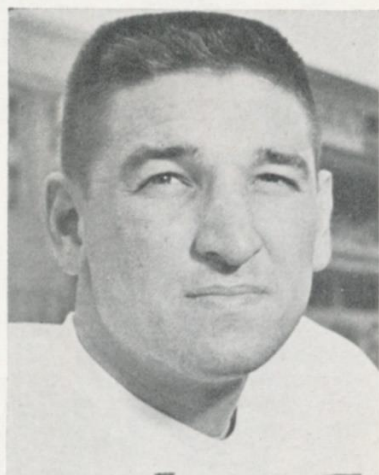
Have a real cigarette -
CAMEL



**CAMELS taste so rich and smoke so mild
they outsell every other brand today!**

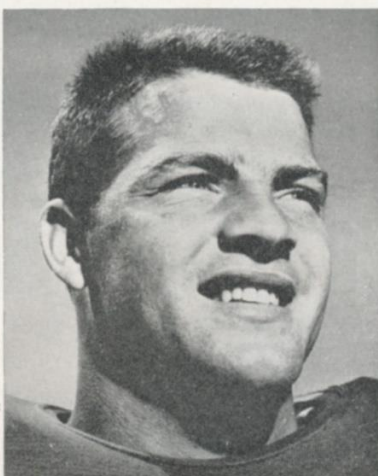
Watch Phil Silvers as Sgt. Bilko (with Pvt. Doberman) on "The Phil Silvers Show" CBS-TV

Giant Album



Philip King

The Giants appear to have made no mistake in naming **Phil King (24)** as their No. 1 choice in last winter's draft. This big (6-4 and 225) boy from Vanderbilt is a riproaring runner from either halfback or fullback and also is a gifted pass-receiver. "Part Indian but all football player," Phil is nicknamed "The Chief."



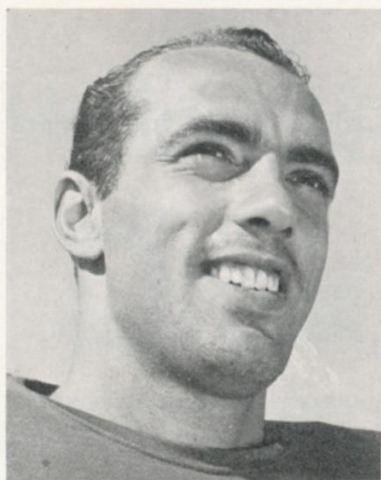
Frank Gifford

Frank Gifford (16) is back for his seventh season with the Giants after a period of doubt as to whether he'd quit football to pursue exclusively his budding career in Hollywood. Backs don't come any better than the ruggedly handsome USC alumnus. No. 1 draft choice of the Giants in 1952, he has been their No. 1 all-around player ever since.



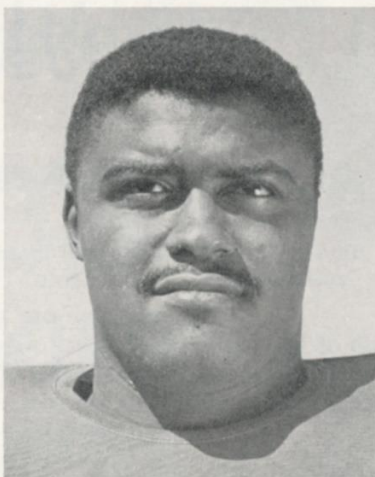
Don Maynard

Don Maynard (13), drafted No. 9 in 1957 as a future prospect, is making the Giant handicappers look good. A 9.6-second sprinter and champion hurdler at Texas Western, he has speed to burn and uses it to advantage as a ball-carrier, pass-receiver and kick-returner. Superstitious in reverse, he wears No. 13 by request.



Don Chandler

Don Chandler (34) led the NFL punting with a 44.6-yard average as a Giant sophomore last year after having finished among the leaders with a 41.9-yard average as a rookie. The Florida alumnus, a No. 5 draft choice in 1955 after winning the collegiate punting title, also is a long-distance place-kicker. More than just a specialist, Don sees some backfield service, too.



Rosy Grier

A spectacular performer for the Giants in 1955-56, **Roosevelt Grier (76)** is back in harness after a year in the Army. A 270-pounder who is as fast and nimble as many halfbacks, Rosy is one of the most destructive tackles in the business. A Penn State graduate, he hails from Linden, N. J.



Carl Karilivacz

Carl Karilivacz (21), a Glen Cove, L. I., native who attended Syracuse University, put in five seasons of stellar service with the Detroit Lions before he was acquired by the Giants in a 1958 pre-season trade. Fast, alert and knowing, he moved right into the defensive line-up at right halfback. Played end on Syracuse's Orange Bowl team of 1953.

AUTOGRAPH COLLECTORS: *Giant Album* is a weekly feature

PLEASE USE ENTRANCE RAMP NEAREST YOUR SEAT



Buy Your Dream Car This Year—under the

GOLD MEDAL

AUTO PLAN

How much would a new car mean to you and your family—in happiness, freedom and convenience?

This year, join the thousands of knowing New Yorkers who will choose Chemical to help them get behind the wheel of a new or late-model used car at a saving.

Chemical's Gold Medal Auto Plan provides you with the money you need to buy your dream car—at low cost and on easy-to-handle terms. You pay only \$3.75 a year per \$100, deducted in advance. Complete

life insurance protection, if you desire it, is available.

One of our friendly and experienced representatives will be glad to work out the Gold Medal Auto Plan to fit your requirements and your budget. He'll handle your application quickly, confidentially—and without red tape. The money is usually available the next day.

Visit any nearby Chemical Corn Exchange Bank office soon and see how easily Chemical's Gold Medal Auto Plan can solve your car buying problems.

Choose the Plan that fits your Budget

Amount of Loan	For 12 Months You Repay	For 24 Months You Repay
\$ 720	\$ 60	\$ 30
1440	120	60
2880	240	120
4920	410	205

Weeknights watch "7 O'CLOCK WORLD NEWS"
with Kevin Kennedy on WPIX-Channel 11



Member Federal Deposit Insurance Corporation

THE BANK THAT'S NEAR YOU IN GREATER NEW YORK

1958 Giant Statistics

FOUR-GAME TEAM RECORDS

GIANTS	OPPONENTS
35 First downs, rushing	26
24 First downs, passing	38
7 First downs, penalty	3
66 Total first downs	67
1168 Total yards gained	1376
646 Net yards gained, rushing	438
522 Net yards gained, passing	938
143 Number of rushing attempts	147
88 Number of passing attempts	119
38 Passes completed	63
8 Passes intercepted by	5
102 Yards on interception	14
23 Number of punts	18
44.8 Punting average	42.2
12 Punts returned	18
513 Punt return average	9.5
13 Kick-Offs returned	14
23.5 Kick-Off return average	20.8
12 Number of penalties	12
120 Yards lost, penalties	118
9 Number of fumbles	13
7 Opponents' fumbles recovered	4

INDIVIDUAL RECORDS

PASSING

	Att.	Comp.	Int.	Yds.	L.G.	TDs.	Pct.
Conerly	67	31	4	446	41	3	.463
Heinrich	15	5	0	68	41	1	.333
*Dublinsky	3	1	0	14	14	0	.333
Gifford	2	0	1	0	0	0	.000
Chandler	1	1	0	27	27	0	1.000

SCORING

	TD-R	TD-P	TDs.	PAT.	FG.	Pts.
Gifford	4	1	5	0	0	30
Summerall	0	0	0	10-12	2-5	16
Webster	2	0	2	0	0	12
King	1	0	1	0	0	6
Triplett	1	0	1	0	0	6
MacAfee	0	1	1	0	0	6
Rote	0	1	1	0	0	6
Schnelker	0	1	1	0	0	6

RUSHING

	Att.	Yds.	L.G.	Avg.
Gifford	40	211	33	5.3
Webster	47	201	54	4.3
Triplett	32	144	22	4.5
King	13	71	18	5.5
Maynard	5	27	14	5.4
Lott	2	11	6	5.5
Heinrich	2	-4	3	0.0
Conerly	2	-15	0	0.0

RECEIVING

	No.	Yds.	TDs.	L.G.
Gifford	11	185	1	41
Webster	7	72	0	37
Schnelker	6	126	1	41
MacAfee	3	37	1	22
Rote	3	33	1	16
Maynard	2	47	0	31
Triplett	2	10	0	7
Mischak	1	27	0	27

PUNT RETURNS

	No.	Yds.	L.G.
Crow	7	46	34
Maynard	5	18	18

INTERCEPTIONS

	No.	Yds.	L.G.
Crow	3	40	34
Patton	3	39	39
Huff	1	15	15
Tunnell	1	8	8

KICK-OFF RETURNS

	No.	Yds.	L.G.
King	7	135	31
Maynard	5	155	44
Triplett	1	15	15

PUNTING

	No.	Avg.	Lgst.
Chandler	23	44.8	59

*No longer with team.

"He tried to take my
Drake's
COOKIES"



Steelers on Offense

R. H. CHRISTY (20)	F. B. YOUNGER (39)	Q. B. LAYNE (22)	L. H. MATHEWS (25)
R. E. McCLAIREN (87)	R. T. VARRICHIONE (74)	R. G. NISBY (65)	C. BEATTY (57)
		L. G. SANDUSKY (62)	L. T. DESS (72)
			L. E. ORR (86)

Giants on Defense

L. E. KATCAVAGE (75)	L. T. MODZELEWSKI (77)	M. G. HUFF (70)	R. T. GRIER (76)	R. E. ROBUSTELLI (81)
L. W. HUGHES (48)	L. L. B. SVOBODA (30)	L. S. CROW (41)	R. S. PATTON (20)	R. L. B. SVARE (84)
				R. W. KARILIVACZ (21)

PITTSBURGH STEELERS ROSTER

No.	Player	Position	Weight	Height	College	Yrs. Pro
16	Dawson, Len	QB	180	6:00	Purdue	2
20	Christy, Dick	HB	180	5:10	North Carolina State	1
22	Layne, Bobby	QB	208	6:01	Texas	11
24	McCabe, Richie	HB	195	6:01	Northwestern	7
25	Mathews, Ray	E-HB	195	6:00	Clemson	8
26	Glick, Gary	HB	190	6:01	Colorado A. and M.	3
27	Derby, Dean	HB	185	6:00	Washington	2
30	Tracy, Tom	HB	205	5:09	Tennessee	3
35	Younger, Paul	FB	230	6:03	Grambling	10
39	Krutko, Larry	FB	220	6:02	West Virginia	1
42	Alban, Dick	HB	185	6:00	Pittsburgh	2
46	Reynolds, Billy	HB	200	6:00	Pittsburgh	4
50	Reger, John	LB	230	6:01	Pittsburgh	4
57	Beatty, Ed	C	225	6:03	Mississippi	4
60	Dodrill, Dale	G	215	6:01	Colorado A. and M.	8
61	Karras, Ted	T	235	6:01	Indiana	1
62	Sandusky, Mike	G	230	6:02	Maryland	2
64	Krisher, Bill	G	230	6:01	Oklahoma	1
65	Nisby, John	G	230	6:01	College of Pacific	2
66	Campbell, Dick	C-LB	225	6:01	Marquette	1
68	Dougherty, Bob	LB	235	6:02	Cincinnati-Kentucky	2
70	Stautner, Ernie	T-E	230	6:02	Boston College	9
71	Lewis, Joe	T	260	6:02	Compton	1
72	Dess, Darrel	T	235	6:00	North Carolina State	1
74	Varrichione, Frank	T	230	6:02	Notre Dame	4
75	Krupa, Joe	T	225	6:02	Purdue	3
77	Smith, Billy Ray	E	230	6:03	Arkansas	2
80	Butler, Jack	HB	195	6:01	St. Bonaventure	8
82	Tarasovic, George	E	245	6:04	L. S. U.	6
83	Lucas, Richard	E	210	6:02	Boston College	1
85	Bishop, Don	E	210	6:02	Los Angeles C. C.	1
86	Orr, Jimmy	E	195	6:02	Georgia	1
87	McClairen, Jack	E	210	6:04	Bethune-Cookman	4
88	Miner, Tom	E	235	6:04	Tulsa	1
90	Lasse, Dick	E-LB	220	6:02	Syracuse	1

GIANT SPEC

PAT and FG—Sun
Chandler
Punting—Chandler (3)
Kick-Offs—Summ
Chandler

OFFICIAL

Refere
Harry Brubaker (23)

Umpir

Tony Sacco (18),

Head Line

Lon Evans (53)

Back Ju

Gilbert Castree (3)

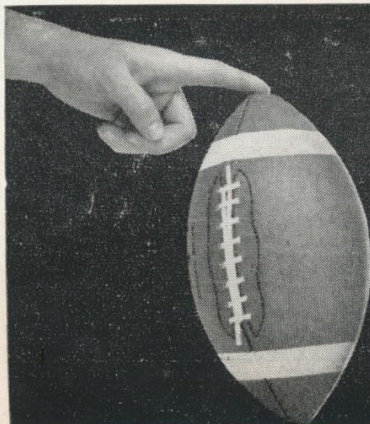
Field Ju

Charles Sweeney (2)

STEELER SPE

PAT and FG—Miner
Layne (2)
Punting—O
Kick-Offs—Miner (8)

PLEASE USE ENTRANCE RAM



Here's to the winning point!
CLEAR HEADS AGREE

CK-OFF
05 P.M.

Giants on Offense

R. H. WEBSTER (29)		F. B. TRIPLETT (33)		Q. B. CONERLY (42)		L. H. KING (24)	
R. E. SCHNELKER (85)	R. T. YOUSO (72)	R. G. BARRY (68)	C. WIETECHKA (55)	L. G. MISCHAK (62)	L. T. BROWN (79)	L. E. ROTE (44)	

Steelers on Defense

L. E. TARASOVIC (82)	L. T. LEWIS (71)	M. G. DODRILL (60)	R. T. KRUPA (75)	R. E. STAUTNER (70)
L. W. GLICK (26)	L. L. B. DOUGHERTY (68)	L. S. DERBY (27)	R. S. BUTLER (80)	R. W. ALBAN (42)

SPECIALISTS

S—Summerall (88),
andler (34).
dler (34), Conerly (42).
—Summerall (88),
andler (34).

FFICIALS

Referee
er (23), Loyola (L. A.)

Umpire
(18), St. Ambrose

d Linesman
ns (53), T. C. U.

ck Judge
street (39), Virginia

ld Judge
ney (22), Notre Dame

R SPECIALISTS

Miner (88), Glick (26),
ayne (22).

ng—Orr (86).

Miner (88), Glick (26).

NEW YORK GIANTS ROSTER

No.	Player	Position	Weight	Height	Age	College	Yrs. Pro
11	Heinrich, Don	QB	180	6:00	27	Washington	5
13	Maynard, Don	HB	178	6:00	22	Texas Western	1
16	Gifford, Frank	HB	205	6:01	28	Southern California	7
20	Patton, Jim	HB	180	5:10	26	Mississippi	4
21	Karilivacz, Carl	HB	190	6:01	27	Syracuse	6
22	Lott, Billy	HB	195	6:00	23	Mississippi	1
24	King, Phil	FB	225	6:04	22	Vanderbilt	1
29	Webster, Alex	HB	210	6:03	27	North Carolina State	4
30	Svoboda, Bill	LB	215	6:00	29	Tulane	9
33	Triplett, Mel	FB	215	6:01	26	Toledo	4
34	Chandler, Don	HB	205	6:02	23	Florida	3
41	Crow, Lindon	HB	200	6:01	25	Southern California	4
42	Conerly, Charley	QB	185	6:01	37	Mississippi	11
44	Rote, Kyle	E	205	6:00	30	Southern Methodist	8
45	Tunnell, Emlen	HB	200	6:01	33	Iowa	11
48	Hughes, Ed	HB	180	6:01	28	Tulsa	4
55	Wietecha, Ray	C	225	6:01	29	Northwestern	6
60	Guy, Melwood	G-T	248	6:03	23	Duke	1
61	Jelacic, Jon	G-E	230	6:03	22	Minnesota	1
62	Mischak, Bob	G	230	6:00	25	Army	1
66	Stroud, Jack	G	235	6:01	29	Tennessee	6
68	Barry, Al	G	230	6:02	26	Southern California	3
70	Huff, Sam	G	230	6:01	23	West Virginia	3
71	Brackett, M. L.	T	250	6:05	25	Auburn	3
72	Youso, Frank	T	260	6:04	22	Minnesota	1
75	Katcavage, Jim	T	230	6:03	23	Dayton	3
76	Grier, Roosevelt	T	270	6:05	25	Penn State	3
77	Modzelewski, Dick	T	260	6:00	27	Maryland	6
79	Brown, Roosevelt	T	245	6:03	25	Morgan State	6
80	MacAfee, Ken	E	215	6:02	29	Alabama	5
81	Robustelli, Andy	E	230	6:01	30	Arnold	8
84	Svare, Harland	LB	215	6:00	27	Washington State	6
85	Schnelker, Bob	E	215	6:04	28	Bowling Green	6
88	Summerall, Pat	E	235	6:04	28	Arkansas	7
89	Livingston, Cliff	LB	215	6:03	28	UCLA	5

RAMP NEAREST YOUR SEAT

Calvert

IS BETTER
RESERVE

IT'S THE WHISKEY
WITH THE MAN-SIZED FLAVOR!

©1958 CALVERT DIST. CO., N.Y.C. • 86 PROOF • 65% GRAIN NEUTRAL SPIRITS • BLENDED WHISKEY



THE GREATER

YONKERS

RACEWAY



See the world's most beautiful clubhouse . . . comfortably weather-conditioned. See every thrilling second of all 9 races. Trackside dining in the fabulous Empire Terrace. Escalators and elevators to all clubhouse and grandstand levels. World's largest Parkadrome with expanded valet service and front door parking. See it all . . . action . . . excitement . . . THRILLS, every weekday night at YONKERS.

DAILY DOUBLE 8:15 **FIRST RACE 8:25**

For Dining reservations, call GREENleaf 6-6430

General Admission \$1.95 tax incl.

Diners' Club Member

THE GIANT OF TROTTING

Looking Over the Steelers

THE Pittsburgh Steelers, a team the Giants never have been in the habit of taking lightly, command greater respect than ever this season.

Within the last couple of weeks, there has been a reunion in the Smoky City of two football men who long have been identified with success.

They are Buddy Parker, who before coming to Pittsburgh at the start of last season piloted the Detroit Lions to three divisional and two world championships, and Bobby Layne, whose gifted quarterbacking had much to do with those Parker accomplishments at Detroit.

The acquisition of Layne gave Pittsburgh the man it has sorely needed for years—a take-charge quarterback who can hit with passes and keep the attack rolling generally.

The handsome blond from Texas hadn't been with his old coach and new team for even a

week before he made his presence felt. In his debut, Bobby guided the Steelers to a stunning 24-3 victory over the Eagles.

As important as was the addition of Layne, the 1958 Steelers are more than a bootstrap operation dependent on the quick lift supplied by this established star.

A noted builder, Parker previously had made other significant, sweeping changes in his team. The Steelers began the season with a dozen rookies on their roster, plus other experienced newcomers obtained in deals with various NFL teams.

As starting backfield companions, Layne has Ray Mathews, an eight-year Steeler from Clemson who still can run as fast as any back in the league; Tom Tracy, a high-gear 205-pound bulldozer from Tennessee who is in his third NFL season, and 230-pound Paul (Tank) Younger, an established line-wrecker acquired from the Rams.



COACH BUDDY PARKER

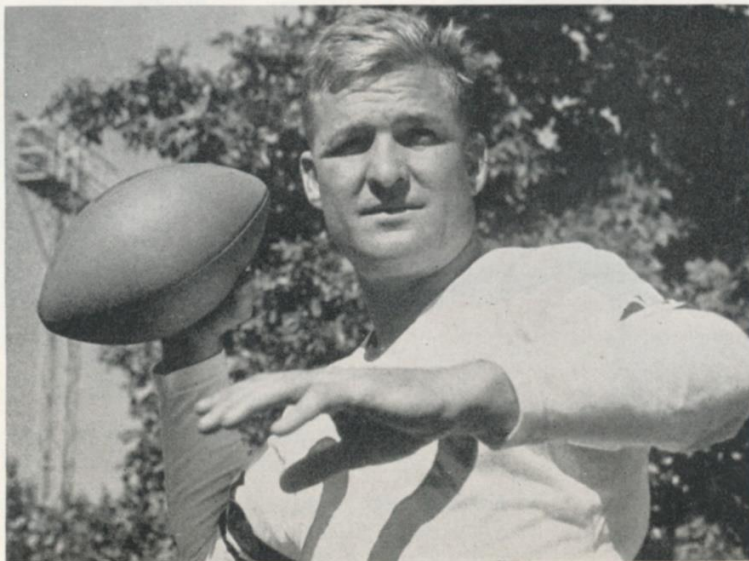
In support, there are a couple of gifted rookies—Dick Christy, the North Carolina Stater who crashed last season's Associated Press All-America team, and Larry Krutko, a rugged 220-pound crasher from West Virginia.

Jimmy Orr, from Georgia, and Richie Lucas, from Boston College, have been added to a swift corps of pass-receiving ends headed by the talented hold-over, Jumping Jack McClair.

Ferocious linemen abound on both Pittsburgh platoons. Among the bell-ringing names on the offensive tackle-to-tackle unit are Frank Varrichione of Notre Dame fame and Mike Sandusky, from Maryland. The defensive group includes the fearsome George Tarasovic, Ernie Stautner and Dale Dodrill, all of whom have won all-league rating at various times.

Jack Butler, an All-Leaguer last season, and Gary Glick, who also is one of the better NFL place-kickers, stand out in a solid secondary.

As Parker would be the first to admit, there still is work to be done in the rebuilding of the Steelers. But the reconstruction project is well under way.



BOBBY LAYNE: Old pro hand in new starring role.

PLEASE USE ENTRANCE RAMP NEAREST YOUR SEAT

Touchdown!



KING-SIZE
FILTER

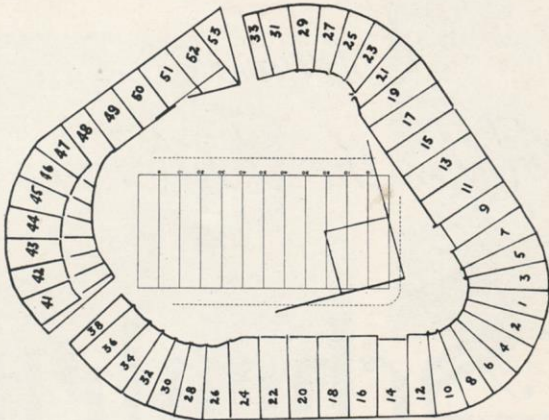
KOOL

the cigarette with the
SNOW FRESH FILTER

Blocked by hot cigarettes? Get into the clear — try a pack of refreshing Filter KOOL!

KOOLS taste *clean* and *fresh* and *light* . . . the *Snow Fresh* Filter makes the menthol *right*! So put yourself on the winning team . . . the KOOL team! For a cleaner, fresher taste all through the day . . . switch from "hots" to KOOLS!

Yankee Stadium Services & Facilities



LOST AND FOUND—Direct inquiries and reports to James K. Thomson, the Stadium Manager. Any attendant will direct you to his office.

REST ROOMS—Men: Gate 2, Press Gate, Stadium Club (lower, upper), Gate 6; Lower Sections 34, 8, 6, 15, 21, 27; Mezzanine Sections 27, 15, 5, 18, 28; Upper Sections 34, 20, 6, 15, 21; Bleacher Sections 43, 47, 52. **Women:** Gate 2, Gate 4, Stadium Club (lower, upper), Gate 6; Lower Sections 28, 20, 5, 15, 27; Mezzanine Sections 21, 15, 6, 18, 34; Upper Sections 28, 20, 5, 15, 29; Bleacher Sections 47, 52.

PUBLIC TELEPHONES—Gate 2, Gate 4, Press Gate, Stadium Club (lower, upper), Gate 6, Lower Sections 24, 14, 12, 11, 17, 27; Mezzanine Sections 27, 17, 7, 8, 22; South side 157th St., Ruppert Pl. to Cromwell Ave. Upper Sections 34, 20, 12, 8, 9, 19, 27; Bleacher Sections 41, 49, 51.

PARKING AREAS YANKEE LOTS

South side 157th St., Ruppert Pl. to Cromwell Ave.
Between Cromwell and River Aves., on 153rd St.
163rd to 164th Sts., between River and Gerard Aves.
151st St. and River Ave., opposite Bronx County jail.

PRIVATELY-OWNED LOTS

West side Ruppert Pl., between 157th and 158th Sts.
West side River Ave., between 151st and 153rd Sts.
West side River Ave. and 157th St.
East side River Ave., North of 153rd St.
East side River Ave., North of 151st St.
East side River Ave., 164th to 165th Sts.
East side River Ave., South of 162nd St.
Farmer's Square—Cromwell Ave. Roadway, and
West of 151st St. Viaduct, opposite Bronx County Jail.

GARAGES

Cromwell Ave. and 157th St.
East side of River Ave., South side of 158th St.
East side of River Ave., North side of 157th St.
East side of River Ave., South side of 157th St.
North side of 158th St., between River and Gerard Aves.
Also, the Polo Grounds lot again will be in service for all Giant games at the Stadium.

SOUVENIR PRICE LIST

Rooter Badge (All Teams).....	.25	Giants Bracelet	1.40
Picture Set (12 Players)35	Player Doll (small)75
Pennant (All Teams)50	Doll (large)	1.50
Giants Pen and Pencil Set75	Stadium Cap (ear laps)	2.00
Giants Player Trophy	1.00	Football (small)	1.50
Plastic Cushion	1.00	Football (large)	3.00

Souvenir Stands located at Gates 2, 4, 6; Lower Sections 2, 18; Mezzanine Sections 20, 23; Upper Sections 18, 21; Bleacher Sections 43, 50.

These items also are available by mail from Harry M. Stevens, Inc., Souvenir Dept., Yankee Stadium, Bronx 51, N. Y.

PARK & TILFORD



When you measure
whiskey value—it's
a good rule to buy
REPUTATION



A reputation is hard to build, easy to destroy. Because we value ours, we market only the finest whiskey your money can buy.

\$4.33
4/5 QUART

\$5.34
QUART

\$2.72
PINT

BLENDED WHISKEY. 65% GRAIN NEUTRAL SPIRITS. 86 PROOF. PARK & TILFORD, N. Y.

WITH MEN WHO KNOW THE SCORE...

*Elegance
Makes the Difference*

...enjoy **Schenley**
RESERVE

The Whisky of Elegance

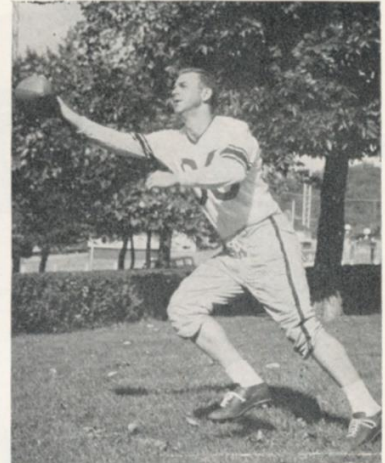




RICHIE LUCAS



LARRY KRUTKO



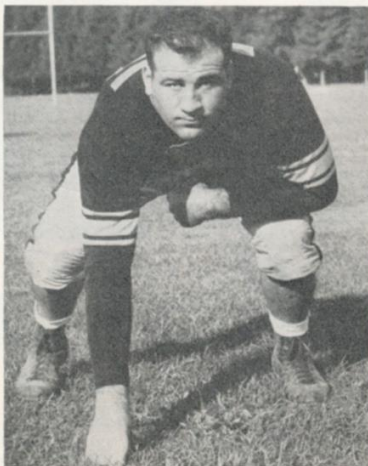
JIMMY ORR

Pittsburgh



ERNIE STAUTNER

Steelers



FRANK VARRICHIONE



RAY MATHEWS



JOHN REGER

PLEASE USE ENTRANCE RAMP NEAREST YOUR SEAT

J. W.
DANT
 WORLD'S
 LARGEST SELLING
 BONDED
 BOURBON



I'm Newt Kook, President of the Dant Distillery. Down in Kentucky we have a saying:

"The only way to have a friend is to be one..."

And I don't know a better way of being a friend to so many as to give them so much for so little. My J. W. Dant genuine Kentucky sour mash bourbon does just that. No wonder it has made more friends the world over than any other Bond!

GIANT LEADERS

Rushing	Gifford: 109—463 yds.
Passing	Conerly: 78 of 155
Receiving	Gifford: 25—295 yds.
Scoring	Gifford: 60 pts.
Punting	Chandler: 44.1-yd. avg.
Punt Returns	Maynard: 20—116 yds.
Kick-Off Returns	Maynard: 10—261 yds.
Interceptions	Patton: 11—183 yds.



Giant-Steeler Series

This will be the forty-fifth game of the series between the Giants and the Steelers in a rivalry that dates back to 1933.

The Giants hold the upper hand, having won 25 games. The Steelers have scored 17 victories. Two contests resulted in ties.

Tight, hard-hitting defensive football has marked the series. In twenty-one games, the winning team scored fewer than 20 points. In twenty-four games, the losing team scored seven points or fewer. The rivalry has produced six shutouts, all authored by the Giants.

The complete series record:

- 1933—New York Giants 23, Pittsburgh Steelers 2
h New York Giants 27, Pittsburgh Steelers 3
- 1934—New York Giants 14, Pittsburgh Steelers 12
h New York Giants 17, Pittsburgh Steelers 7
- 1935—New York Giants 42, Pittsburgh Steelers 7
h New York Giants 13, Pittsburgh Steelers 0
- 1936—Pittsburgh Steelers 10, New York Giants 7
- 1937—New York Giants 10, Pittsburgh Steelers 7
h New York Giants 17, Pittsburgh Steelers 0
- 1938—New York Giants 27, Pittsburgh Steelers 14
h Pittsburgh Steelers 13, New York Giants 10
- 1939—New York Giants 14, Pittsburgh Steelers 7
h New York Giants 23, Pittsburgh Steelers 7
- 1940—New York Giants 10, Pittsburgh Steelers 10
h New York Giants 12, Pittsburgh Steelers 0
- 1941—New York Giants 37, Pittsburgh Steelers 10
h New York Giants 28, Pittsburgh Steelers 7
- 1942—Pittsburgh Steelers 13, New York Giants 10
h Pittsburgh Steelers 17, New York Giants 9
- 1945—New York Giants 34, Pittsburgh Steelers 6
h Pittsburgh Steelers 21, New York Giants 7

GIANTS vs. ALL OPPONENTS

Opponent	W.	L.	T.	Pts.	Opp. Pts.
Baltimore	1	1	0	31	27
Chicago Bears	13	20	2	404	547
Chicago Cards	26	8	0	785	537
Cleveland Browns	5	11	1	236	329
Detroit Lions	4	8	1	158	268
Green Bay Packers	14	14	2	405	393
Los Angeles Rams	0	5	0	91	155
Philadelphia Eagles	31	17	1	909	724
Pittsburgh Steelers	25	17	2	805	605
San Francisco 49ers	2	1	0	78	62
Washington Redskins	27	16	1	863	727

- 1946—New York Giants 17, Pittsburgh Steelers 14
h New York Giants 7, Pittsburgh Steelers 0
- 1947—h Pittsburgh Steelers 38, New York Giants 21
Pittsburgh Steelers 24, New York Giants 7
- 1948—h New York Giants 34, Pittsburgh Steelers 27
Pittsburgh Steelers 38, New York Giants 28
- 1949—Pittsburgh Steelers 28, New York Giants 7
h Pittsburgh Steelers 21, New York Giants 17
- 1950—New York Giants 18, Pittsburgh Steelers 7
h Pittsburgh Steelers 17, New York Giants 6
- 1951—New York Giants 13, Pittsburgh Steelers 13
h New York Giants 14, Pittsburgh Steelers 0
- 1952—Pittsburgh Steelers 63, New York Giants 7
- 1953—Pittsburgh Steelers 24, New York Giants 14
h Pittsburgh Steelers 14, New York Giants 10
- 1954—New York Giants 30, Pittsburgh Steelers 6
h New York Giants 24, Pittsburgh Steelers 3
- 1955—Pittsburgh Steelers 30, New York Giants 23
h Pittsburgh Steelers 19, New York Giants 17
- 1956—h New York Giants 38, Pittsburgh Steelers 10
New York Giants 17, Pittsburgh Steelers 14
- 1957—h New York Giants 35, Pittsburgh Steelers 0
Pittsburgh Steelers 21, New York Giants 10
(Points—Giants 805, Steelers 605)

h Game played in New York.

Enjoy 'em at the Game and at Home

Here at Yankee Stadium, reach for MRS. WAGNER'S delicious individual pies. At home, enjoy the fresh-baked goodness of MRS. WAGNER'S family-size pies. Both ways, you're in for real enjoyment.



Why bake when you can buy

Mrs. Wagner's Pies



"THESE FRANKFURTS ARE HICKORY SMOKED!"

Enjoy 'em at home, the circus, the football field, *everywhere!*
Take your choice—regular or all-beef franks—both are *all meat!* Both deliciously hickory-smoked! Available in jars and cellophane, too. By famous . . .

Stahl-Meyer



FAMOUS FERRIS HICKORY SMOKED CANNED HAM AND FERRIS BACON ARE TWO MORE FINE PRODUCTS MANUFACTURED AND KITCHEN TESTED BY STAHL-MEYER INC.

NATIONAL LEAGUE OFFICIALS' SIGNALS



Offside



Crawling, Pushing,
Helping Runner



Illegal Motion



Illegal Pass



Unsportsmanlike
Conduct



Pass Interference



Holding, Illegal
Use of Hands



Personal Foul
(indication of
offense follows)



Delay of Game,
Excess Time-Out



Touchdown, Field
Goal, Extra Point



Safety



Loss of Down



Penalty Declined,
Incomplete Pass,
Missed Goal



First Down



Dead Ball



No Time-Out or
Time In with Whistle



Time-Out



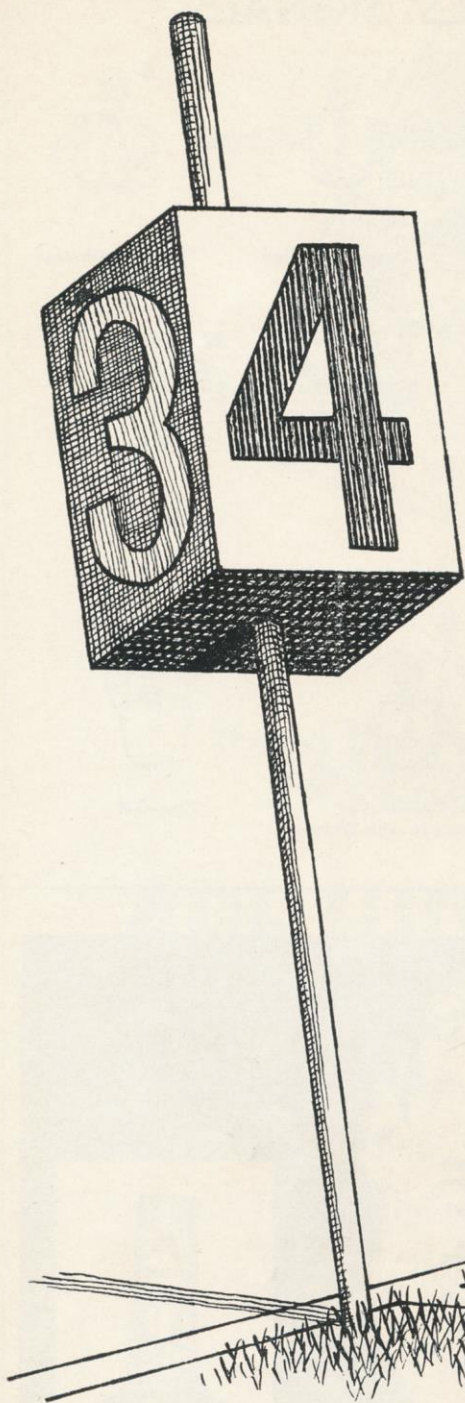
BY APPOINTMENT
TO THOSE
WHO THOUGHTFULLY
JUDGE WHISKEY
BY EXPERIENCE

MELROSE

THE VINTAGE WHISKEY

Vintage Blended Whiskey, 90 Proof, 60% Grain Neutral Spirits. Melrose Distillers Co., N. Y.





Before they call
that 4th down kick
Stand up, brother . . .

Sing out for Knick



Knickerbocker

NEW YORK'S FAMOUS BEER

Jacob Ruppert, N. Y. C.

Giant Blackboard

THE Giant offensive repertoire includes plays from half a dozen different formations.

Sometimes the Giants keep their three deep backs in normal T alignment behind center, with ends in tight. More frequently, they flank one halfback and post an end wide on the opposite side.

They also often line up in "balanced formation," with two backs in normal halfback position, a third back set out on one side and an end flanked on the other side.

In brief, the diagrammed formation presents a balanced backfield and split ends, with a slot back set between the flanked left end and the left tackle. The set-up can be duplicated to the right.

From this formation, the Giants can run power sweeps to each side, quick-hitting "pop" plays over the tackles, cutback thrusts over the middle, cross-backs, reverses and a wide variety of pass plays.

That's the test of a formation: the number of different plays that can be run off it without tell-tale variations of position.

The play detailed is a check off a cutback by the right halfback.

Don Heinrich or Charley Conerly, whoever is at quarterback, spins right, fakes a hands-off to Alex Webster and flips a long pitch to Phil King or Mel Triplett, whoever is running from the other halfback spot.

In full flight to the left when he gets the ball, King or Triplett sweeps end. Rosy Brown, at left tackle, makes an outside block on the defensive right end; Kyle Rote, at left end, blocks the right outside linebacker; the slot back, Triplett or King, blocks the right corner man; Bob Mischak, at left guard, takes the right safety; Ray Wietecha, at center, cuts left to pick off pursuers and the right side Giant linemen head downfield to help in any way they can.

Normally, on wide plays, the Giants pull both guards. However, with an end and a slot back on station, there's no need to on this play. Also, the pitch-out is so wide that the guards couldn't possibly get out in front of the carrier.

Result, if all goes as planned: a Giant touchdown.

Today's illustrated play evolves from a variation of the "balanced formation" that Vince Lombardi, the Giants' offensive coach, describes as "balanced left, inside." This house designation can be literally translated into terms more intelligible for general consumption.



KEN SEARS, N. Y. Knicks

Pro Basketball Madison Square Garden

This Coming Saturday Night

NEW YORK KNICKS

(Kenny Sears, Carl Braun, Willie Naulls,
Richie Guerin, Ray Felix)

VS.

PHILADELPHIA WARRIORS

(Paul Arizin, Tom Gola, Ernie Beck, Jack
George, Woody Sauldsbury)

NO TELEVISION

First Game—7:15 P.M.

Prices—\$4.50, \$3, \$2.50, \$2, \$1.50

Tickets on sale at Madison Square Garden box office.
Mail orders promptly filled. Write Basketball Dept.,
Madison Square Garden, 307 West 49th Street.
Add 25 cents for handling and mailing.

HOME AND AWAY GAMES ON RADIO WINS (1010KC) BROUGHT TO YOU BY BUDWEISER



"There's no substitute
for that
TIP-TOP
feeling"

Tip-Top Bread and Cakes... just a teeny bit better!

"Tip-Top" Reg. U. S. Pat. Off., Ward Baking Company

Above all... it's light!



Please be patient if you don't find Long John the first try! Shipments of this wonderfully light whisky are barely trickling over from Scotland.

86 PROOF • BLENDED SCOTCH WHISKY • DREYFUS, ASHBY CO., INC. • SOLE U. S. IMPORTERS, N. Y.

NFL Statistical Leaders For Past Fifteen Years

BALL CARRYING

	Yards Gained	Atts.
1957—James Brown, Cleveland	942	202
1956—Rick Casares, Chicago Bears	1,126	234
1955—Alan Ameche, Baltimore	961	213
1954—Joseph Perry, San Francisco	1,049	173
1953—Joseph Perry, San Francisco	1,018	192
1952—Dan Towler, Los Angeles	894	156
1951—ED PRICE, NEW YORK	971	*271
1950—Marion Motley, Cleveland	810	140
1949—Steve Van Buren, Philadelphia	*1,146	263
1948—Steve Van Buren, Philadelphia	945	201
1947—Steve Van Buren, Philadelphia	1,008	217
1946—William Dudley, Pittsburgh	604	146
1945—Steve Van Buren, Philadelphia	832	143
1944—BILL PASCHAL, NEW YORK	737	196
1943—BILL PASCHAL, NEW YORK	572	147

FORWARD PASSING

	Passes	Comp.	Yds.	Tds.
1957—Tom O'Connell, Cleve.	110	63	1,229	9
1956—Ed Brown, Chi. Bears	168	96	1,667	11
1955—Otto Graham, Cleve.	185	98	1,721	15
1954—Norm Van Brocklin, L. A.	260	139	2,637	13
1953—Otto Graham, Cleve.	258	167	2,722	11
1952—Norm Van Brocklin, L. A.	205	113	1,736	14
1951—Bob Waterfield, L. A.	176	88	1,566	13
1950—Norm Van Brocklin, L. A.	233	127	2,061	18
1949—Sam Baugh, Washington	255	145	1,903	18
1948—Tommy Thompson, Phila.	246	141	1,965	25
1947—Sam Baugh, Washington	*354	*210	*2,938	25
1946—Bob Waterfield, L. A.	251	127	1,747	18
1945—Sam Baugh, Washington	182	128	1,669	11
1944—Frank Filchock, Wash.	147	84	1,139	13
1943—Sam Baugh, Washington	239	133	1,754	23

PASS RECEIVING

	Caught	Yards	Tds.
1957—Billy Wilson, San Francisco	52	757	6
1956—Billy Wilson, San Francisco	60	889	5
1955—Pete Pihos, Philadelphia	62	864	7
1954—Pete Pihos, Philadelphia	60	872	10
Billy Wilson, San Francisco	60	830	5
1953—Pete Pihos, Philadelphia	63	1,049	10
1952—Mac Speedie, Cleveland	62	911	5
1951—Elroy Hirsch, Los Angeles	66	*1,495	*17
1950—Tom Fears, Los Angeles	*84	1,116	7
1949—Tom Fears, Los Angeles	77	1,013	9
1948—Tom Fears, Los Angeles	51	698	4
1947—Jim Keane, Chicago Bears	64	910	10
1946—Jim Benton, Los Angeles	63	981	6
1945—Don Hutson, Green Bay	47	834	9
1944—Don Hutson, Green Bay	58	866	9
1943—Don Hutson, Green Bay	47	776	11

SCORING

	TDs	PAT	FG	Pts.
1957—Sam Baker, Washington	1	29	14	77
Lou Groza, Cleveland	0	32	15	77
1956—Bobby Layne, Detroit	5	33	12	99
1955—Doak Walker, Detroit	7	27	9	96
1954—Robert Walston, Philadelphia	11	36	4	114
1953—Gordon Soltau, San Francisco	6	48	10	114
1952—Gordon Soltau, San Francisco	7	34	6	94
1951—Elroy Hirsch, Los Angeles	17	0	0	102
1950—Doak Walker, Detroit	11	38	8	128
1949—Pat Harder, Chicago Cards	8	45	3	102
GENE ROBERTS, N. Y.	17	0	0	102
1948—Pat Harder, Chicago Cards	6	53	7	110
1947—Pat Harder, Chicago Cards	7	39	7	102
1946—Ted Fritsch, Green Bay	10	13	9	100
1945—Steve Van Buren, Phila.	*18	2	0	110
1944—Don Hutson, Green Bay	9	31	0	85
1943—Don Hutson, Green Bay	12	36	3	117

*League record.

SEASON AFTER SEASON...



"Ahh ...
So Pure!"

She's New York's Best Girl!

White Rock

for sparkling fine beverages

The White Rock Girl stays so popular because the brand she represents satisfies so completely! Thanks to superior carbonation, a White Rock drink keeps sparkling from the first pour to the last sip. So for a lighter, livelier drink every time, don't just mix it ... *White Rock it!*



Today's N. F. L. Pairings

Home Team		Visiting Team	
NEW YORK		PITTSBURGH	
Won 2, Lost 2		Won 1, Lost 3	
37—Cards at Buffalo	7	20—San Francisco (a)	23
24—Philadelphia (a)	27	12—Cleveland	45
21—Washington (a)	14	24—Philadelphia	3
6—Chicago Cards	23	10—Cleveland (a)	27
—Pittsburgh		—New York (a)	
—Cleveland (a)		—Washington	
—Baltimore		—Philadelphia (a)	
—Pittsburgh (a)		—New York	
—Washington		—Chicago Cards (a)	
—Philadelphia		—Chicago Bears	
—Detroit (a)		—Washington (a)	
—Cleveland		—Chicago Cards	
88	71	66	98

Home Team		Visiting Team	
BALTIMORE		WASHINGTON	
Won 4, Lost 0		Won 2, Lost 2	
28—Detroit	15	24—Philadelphia (a)	14
51—Chicago Bears	38	10—Chicago Cards (a)	37
24—Green Bay at Milw.	17	14—New York	21
40—Detroit (a)	14	37—Green Bay	21
—Washington		—Baltimore (a)	
—Green Bay		—Pittsburgh (a)	
—New York (a)		—Chicago Cards	
—Chicago Bears (a)		—Cleveland	
—Los Angeles		—New York (a)	
—San Francisco		—Cleveland (a)	
—Los Angeles (a)		—Pittsburgh	
—San Francisco (a)		—Philadelphia	
143	84	85	93

CHICAGO CARDS		CLEVELAND	
Won 2, Lost 2		Won 4, Lost 0	
7—New York at Buff.	37	30—Los Angeles (a)	27
37—Washington	10	45—Pittsburgh (a)	12
28—Cleveland (a)	35	35—Chicago Cards	28
23—New York (a)	6	27—Pittsburgh	10
—Cleveland		—Chicago Cards (a)	
—Philadelphia		—New York	
—Washington (a)		—Detroit	
—Philadelphia (a)		—Washington (a)	
—Pittsburgh		—Philadelphia	
—Los Angeles		—Washington	
—Chicago Bears (a)		—Philadelphia (a)	
—Pittsburgh (a)		—New York (a)	
95	88	137	77

LOS ANGELES		DETROIT	
Won 2, Lost 2		Won 0, Lost 3, Tied 1	
27—Cleveland	30	15—Baltimore (a)	28
33—San Francisco (a)	3	13—Green Bay (a)	13
42—Detroit (a)	28	28—Los Angeles	42
10—Chicago Bears (a)	31	14—Baltimore	40
—Detroit		—Los Angeles (a)	
—Chicago Bears		—San Francisco (a)	
—San Francisco		—Cleveland (a)	
—Green Bay (a)		—San Francisco	
—Baltimore (a)		—Chicago Bears	
—Chicago Cards (a)		—Green Bay	
—Baltimore		—New York	
—Green Bay		—Chicago Bears (a)	
112	92	70	123

GREEN BAY		PHILADELPHIA	
Won 0, Lost 3, Tied 1		Won 1, Lost 3	
20—Chicago Bears	34	14—Washington	24
13—Detroit	13	27—New York	24
17—Baltimore at Milw.	24	3—Pittsburgh (a)	24
21—Washington (a)	37	24—San Francisco	30
—Philadelphia		—Green Bay (a)	
—Baltimore (a)		—Chicago Cards (a)	
—Chicago Bears (a)		—Pittsburgh	
—Los Angeles		—Chicago Cards	
—San Fran. at Milw.		—Cleveland (a)	
—Detroit (a)		—New York (a)	
—San Francisco (a)		—Cleveland	
—Los Angeles (a)		—Washington (a)	
71	108	68	102

SAN FRANCISCO		CHICAGO BEARS	
Won 2, Lost 2		Won 3, Lost 1	
23—Pittsburgh	20	34—Green Bay (a)	20
3—Los Angeles	33	38—Baltimore (a)	51
6—Chicago Bears (a)	28	28—San Francisco	6
30—Philadelphia (a)	24	31—Los Angeles	10
—Chicago Bears		—San Francisco (a)	
—Detroit		—Los Angeles (a)	
—Los Angeles (a)		—Green Bay	
—Detroit (a)		—Baltimore	
—Green Bay at Milw.		—Detroit (a)	
—Baltimore (a)		—Pittsburgh (a)	
—Green Bay		—Chicago Cards	
—Baltimore		—Detroit	
62	105	131	87

NATIONAL LEAGUE LEADERS

RUSHING

1. Brown, Cleveland	94 for 635 yds.
2. Mitchell, Cleveland	42 for 370 yds.
3. Wilson, Los Angeles	36 for 302 yds.

PASSING

1. Le Baron, Washington	30 of 53 for 514 yds.
2. Reynolds, Cardinals	39 of 69 for 631 yds.
3. Brodie, San Francisco	40 of 68 for 602 yds.

RECEIVING

1. Berry, Baltimore	23 for 361 yds.
2. Shofner, Los Angeles	19 for 424 yds.
3. Owens, San Francisco	19 for 278 yds.

SCORING

1. Brown, Cleveland	60 pts.
2. Galimore, Bears	42 pts.
3. Moore, Baltimore	36 pts.

NATIONAL LEAGUE STANDINGS

EASTERN CONFERENCE

	W.	L.	T.	Pct.	Points For	Points Agst.
Cleveland	4	0	0	1.000	137	77
NEW YORK	2	2	0	.500	88	71
Washington	2	2	0	.500	85	93
Chicago Cardinals	2	2	0	.500	95	88
Philadelphia	1	3	0	.250	68	102
Pittsburgh	1	3	0	.250	66	98

WESTERN CONFERENCE

	W.	L.	T.	Pct.	Points For	Points Agst.
Baltimore	4	0	0	1.000	143	84
Chicago Bears	3	1	0	.750	131	87
Los Angeles	2	2	0	.500	112	92
San Francisco	2	2	0	.500	62	105
Green Bay	0	3	1	.000	71	108
Detroit	0	3	1	.000	70	123

PLEASE USE ENTRANCE RAMP NEAREST YOUR SEAT

ONCE
IN A
BLUE
MOON



Rare is the whiskey of such character and savor that it unfailingly offers complete and perfect pleasure. And if this triumph won't quite change the stars in their courses or shade a gold moon blue, at least it can win more advocates than any other whiskey in the world's history. It can . . . and *did*. Its name is 7 Crown.

Say **Seagram's** and be **Sure**
OF THE FIRST AND FINEST AMERICAN WHISKEY



CHESTERFIELD SALUTES THE
AIR FORCE
 MEN OF AMERICA

MEET STEVE CANYON ON TV MILTON CANIFF'S
 LEGENDARY HERO COMES TO LIFE IN AUTHENTIC EPISODES
 FILMED ROUND THE WORLD...WITH THE COOPERATION OF THE
 U. S. AIR FORCE...

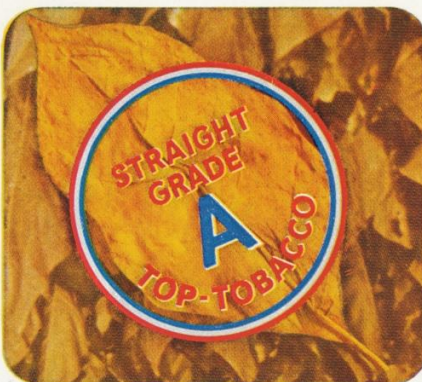


Jets go flashing through the mile-high air! Move in fast and hit the target square!

Mission accomplished... and you'll find a man



Stops and takes big pleasure when and where he can... Chesterfield!



Always the top-tobacco, straight Grade-A, the top-tobacco in the U. S. A.



Sun-drenched top-tobacco's gonna mean You're smokin' smoother and smokin' clean!

When you've earned a smoke—nothing satisfies like the
BIG CLEAN TASTE OF TOP-TOBACCO!

CHESTERFIELD



REGULAR

KING