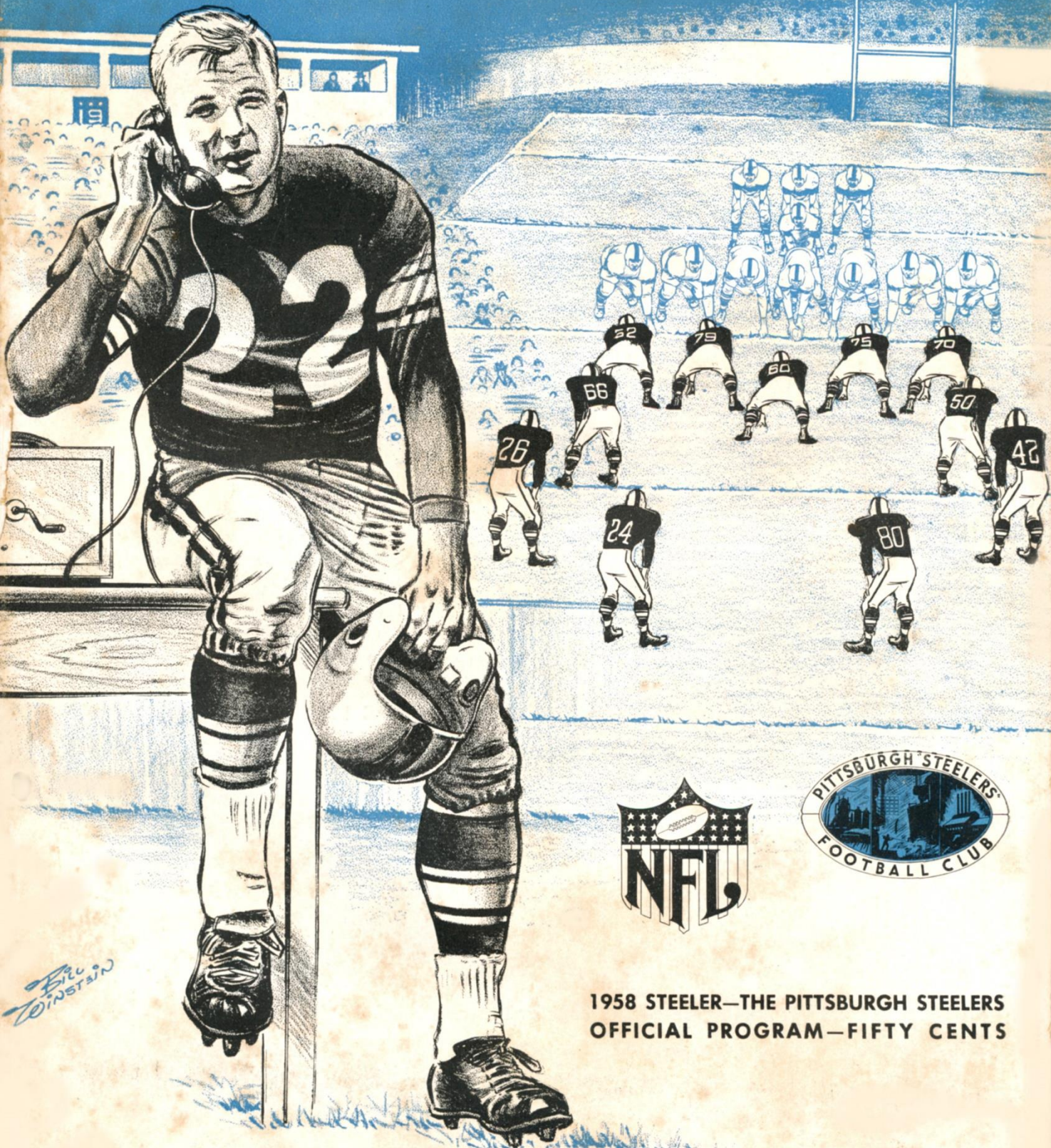


PITTSBURGH STEELERS

NEW YORK GIANTS

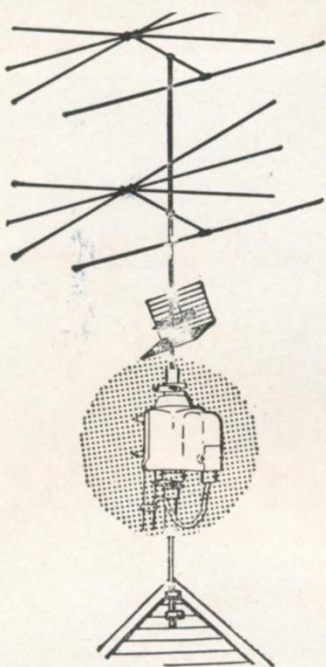
PITT STADIUM, NOVEMBER 16, 1958



1958 STEELER—THE PITTSBURGH STEELERS
OFFICIAL PROGRAM—FIFTY CENTS

FOR THE BEST IN . . .

BLACK and WHITE . . . and COLOR TELEVISION



Fully enclosed weather-sealed rotor turns antenna . . . points it in any direction for top signal "pickup". Fits all standard antennas.

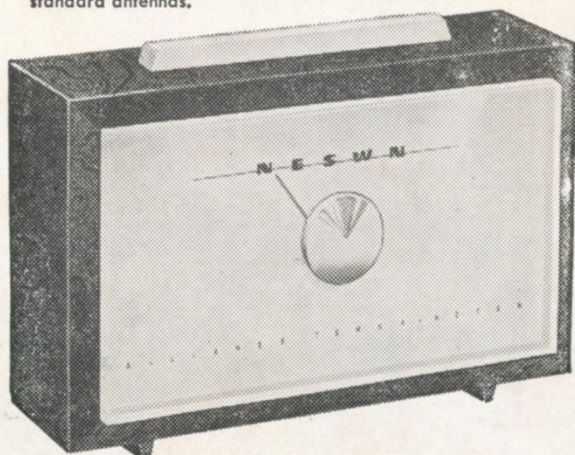
... BE SURE YOU INSTALL
ALLIANCE
TENNA • ROTOR

KEEPS YOUR COLOR SPARKLING—LIFELIKE
Black and white is clearer—cleaner

Color TV is critical . . . more sensitive to reflections! Turning your antenna ever so little with **Alliance Tenna-Rotor** can be the difference between rich, full color . . . color that's muddy or no color at all! Alliance Tenna-Rotor aims your antenna on the station . . . overcomes interference . . . makes for clearer TV pix.

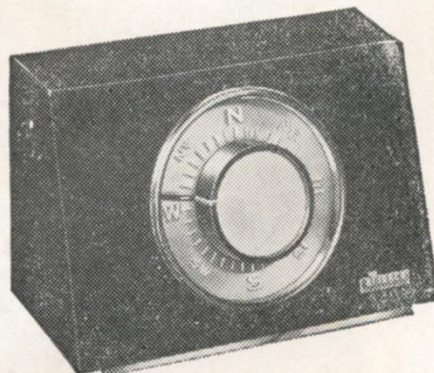
In fringe areas or in multi-station towns, Tenna-Rotor is your assurance for the **best** in black and white or **color TV**.

AS LOW AS **\$24.50**



Model T-12 with Tenna-Teller dial is extremely accurate. Comes in new decorator colors—forest green, ivory, or standard mahogany. Price **\$34.25**.

Model U-98 the first and finest fully automatic rotator. You "just set it and forget it" . . . also in new decorator colors. Price **\$44.25**.



Call FAirfax 2-2400, Extension 253, for the name of the dealer nearest you.

HAMBURG BROTHERS, INC. Wholesale Distributors
PITTSBURGH • WHEELING • YOUNGSTOWN

THE 1958 STEELER

OFFICIAL PUBLICATION OF



THE PITTSBURGH STEELERS

26th Year in the National Football League

Steeler Season Books Make The Ideal Gift

31 SHOPPING DAYS UNTIL CHRISTMAS!



Here is a reproduction of the attractive gift certificate available for fans who want to give Steeler tickets as presents for Christmas, or any other occasion. The sender will long be remembered by anyone receiving this thoughtful and desirable gift.

They can be secured on the Budget Plan, too!

Drop in at 139 Sixth Street, Roosevelt Hotel, or telephone EXpress 1-1200, and talk to our ticket men.

Table of Contents

	Page
Poor Old Charley	4
When The Steelers Have The Ball	6
On The Spot	8
Roster of The Steelers	10
John Reger	12
Pictures of The Giants	17-20-25
Roster of The Giants	19
Thirty-One Years Young	21
When The Giants Have The Ball	22
Tom Tracy	24
Entertainment	24
Officials	24
NFL Leaders	24
NFL Schedule	25
Pictures of The Bears	26

SCORES OF PAST STEELERS-GIANTS GAMES

1950	Steelers	7	—	Giants	18
	"	17	—	"	6
1951	"	13	—	"	13
	"	0	—	"	14
1952	"	63	—	"	7
	"		—	"	
1953	"	24	—	"	14
	"	14	—	"	10
1954	"	6	—	"	30
	"	3	—	"	24
1955	"	30	—	"	23
	"	19	—	"	17
1956	"	14	—	"	17
	"	10	—	"	38
1957	"	0	—	"	35
	"	21	—	"	10

POOR OLD CHARLEY

By JACK SELL
Post-Gazette Football Writer

Today may mark the final local appearance of one of pro football's great forward passers when Chuckin' Charley Conerly of the New York Giants hurls the pigskin against the Pittsburgh Steelers in Pitt Stadium.

The University of Mississippi graduate was 37 years old last September 19 and has been going to the pro football wars for eleven seasons. He has to quit sometime and this just might be his last time around.

Conerly had the misfortune to get off on the wrong foot in the Maramen's home opener in Yankee Stadium. He missed the mark with numerous flings, had others intercepted. As a result the Chicago Cardinals copped a 23-6 decision. Earlier in Buffalo the New Yorkers had shuffled the Cards, 37-7.

In Big Town you must win or else. "Poor old Charley" was over the hill, the sports pages screamed. The Steelers were shocked to hear the veteran booed the next Sunday when Rooney U. visited the Stadium.

Coach Jim Lee Howell listened to the razzberries and decided to keep his star on the

bench except for holding the ball on placements. Don Heinrich did all the passing and won, 17-6.

But the Chucker wasn't done. The Giants traveled to Cleveland for a battle with the unbeaten Browns. When the final gun barked the Gothamites had won, 21-17, with Conerly pitching for three TDs.

Last Sunday he found the range for another six-pointer when the Baltimore Colts were handed their first loss, 24-21. So "Poor old Charley" isn't acting his age.

Back in 1948 at Forbes Field Conerly set an NFL record of 36 completions in a single game. It withstood the threats of some great passers now for 10 years.

Curiously Charley was drafted by the Washington Redskins then traded to the Giants. He was Rookie-of-Year as a singleging tailback in 1948, then switched to the T in 1949.

If Rooney U. wants to stick in the NFL race they will have to handle "Poor old Charley" this afternoon.

★ ★ ★

FOLLOW THE STEELERS ON

★ ★ ★

WWSW

AM-970 Kcs, 5,000 Watts — FM-94.5 Mgs, 50,000 Watts

ASK THE MEN IN YOUR PLANT WHO DRIVE KENNY ROSS CHEVIES

The
Steelers



*Sure... ask the men who work with you...
they'll tell you how EASY it is to buy a*

NEW CHEVROLET from KENNY

Then ask yourself... Why don't I hop over to Kenny's?

KENNY ROSS, I SAY!



Kenny Ross Chevrolet

Cedar 1-3600

1100 WESTERN AVE., NORTH SIDE, Over Manchester Bridge



"THE ONLY WINTER TIRE
WITH GUARANTEED TRACTION"

**THE
GENERAL
TIRE**

Ed Feigenbaum Says:

*"You Go in Snow or
I'll Pay the Tow!"*

•
**TWO GREAT
WINTER TIRES**
•

**FOR SAFE
HUMAN MILEAGE**



HAWKINSON TREADS, Inc.

4627 Baum Blvd.

MUseum 2-3788

Pittsburgh 13, Pa.

CAMPBELL DIVISION

3701 Bigelow Blvd.

MAYflower 1-1275

Pittsburgh 13, Pa.

When THE STEELERS Have The Ball

STEELERS OFFENSIVE DEPTH



GIANTS DEFENSIVE DEPTH

When THE GIANTS Have The Ball Turn To Page 22

HERE'S JUST THE TICKET FOR DEPENDABLE TRANSPORTATION

All around town call
YELLOW CAB

for the

BEST cab service

FAirfax 2-8100

Radio Dispatched



Between town
and the Airport

Ride in comfort in roomy
buses and limousines. Also
direct limousine service to
and from Hotel Webster
Hall in Oakland.



AIRLINES TRANSPORTATION CO.
GRant 1-2250



S...T...O...N...E...Y...S

Smoother Beer...Adding Cheer

Stoney's

AT YOUR FAVORITE DEALERS OR TAVERN
Custom Brewed by the House of Jones, Smithton, Pa.



Saturday, December 13, 1958

STEELERS' BICENTENNIAL GAME

DATEWAY
TO THE FUTURE

Pittsburgh Steelers vs. Chicago Cardinals

KICK-OFF AT 1:30 P. M.

GREAT HALF-TIME SHOW

FAMILY DAY AT THE STADIUM

PARENTS BRING YOUR CHILDREN FREE

Any Two Children Under 16 Years of Age Admitted Free When Accompanied by Parents
Children Will Be Seated In Section 24

Game Will Be Televised Coast-to-Coast
But Blacked Out In This Area

Steeler Alumni Will Be Present

**IRON CITY SAND
& GRAVEL CORP.**

Producers of
Washed River Sand, Gravel
and Crushed Gravel

**VANG READY MIXED
CONCRETE COMPANY**

Concrete
Delivered Anywhere



GRANT BUILDING, PITTSBURGH, PA.
GRant 1-0700

RIVER SHIPPING & SUPPLY CORPORATION

Building Supplies - Ready Mixed Concrete - Concrete Block
WEST ELIZABETH, PA. — ELIZABETH 302-3

**Brewed with pure
mountain spring water**



**ROLLING
ROCK**
Premium
BEER



**On The
? Spot ?**



QUESTION:

What was your reaction when you were told that you had been traded?

ANSWER: Tom Tracy —

"Well, frankly, I wasn't too happy. Detroit is a fine football town and I thought the Lions' chances of taking the league again were excellent. But I'm happy as can be now in Pittsburgh. I'm playing more than I would have in Detroit and this team isn't far from the top. The people have been very nice to me and I think with a couple of wins, we'll draw pretty well."



QUESTION:

Who was the finest punter you ever saw?

ANSWER: Dale Dodrill —

"Horace Gillom of the Browns was the best I ever played against but the best I ever saw was Pat Brady who played a couple of seasons with us. Watching him kick was like watching a baseball batter with a perfect swing. I remember one time while practicing at Forbes Field he got one off that must have gone eighty yards in the air. There was a strong wind behind Pat and the ball actually sailed out of the park. He was one guy that other pro players would just stand back and watch in amazement."

QUESTION:

What do you consider the most important asset of a runner?

ANSWER: Ollie Matson of the Chicago Cards —

"I guess the most obvious answer would be speed but I'm inclined to feel that a change of pace is at least as important. In this league you find on any defensive team a couple of guys who are pretty fast. The change of pace is the thing that will spring a runner or give him the extra steps he needs to pull away."

STEELERS AT THE STADIUM

Nov. 30 _____ Chicago Bears
Dec. 13 _____ Chicago Cardinals

A Delicious Snack A Luscious Meal

CORNER BEEF by RICHEST'S

When you pick up your tickets, to the Steelers' game, just cross the street and take home a savory pound.

RICHEST'S — 140 SIXTH STREET
Opposite Steelers' Ticket Office

Office
FAirfax 1-3115

Residence
ALlegheny 1-3582

JOHN R. HESS

GENERAL CONTRACTOR
and ENGINEERING

847 W. North Ave. N. S., Pittsburgh 33, Pa.

PUT YOUR
PITTSBURGH FUN
INTO A

Golden Weekend

Choice seats at
**TOP STAGE
AND SCREEN
ATTRACTIONS**
*plus a
glamorous suite
at the*
**CARLTON HOUSE
HOTEL**
with free parking



plus



*Sunday Brunch
at the
world famous*
TOWN & COUNTRY

*for details call
the assistant manager*

**CARLTON
HOUSE HOTEL**

550 GRANT ST. • GRant 1-6060

John Penn, Manager

**\$21
for 2**

FOR A
FUN-FILLED
WEEKEND

Williams Vending Machine Co.

CIGARETTE MACHINES
MUSIC BOXES

1400 EAST STREET
North Side, Pittsburgh 12, Pa.
Phone CEdar 1-7006

william penn flower shop

SINCE 1918

NOW SERVING YOU FROM 2 LOCATIONS

Distinctive Floral Arrangements
and Fruit Baskets

DOWNTOWN East Liberty Branch
PENN-SHERATON HOTEL 132 N. HIGHLAND AVE.
Express 1-3675 EMerson 1-7400

DELIVERIES EVERYWHERE — FLOWERS TELEGRAPHED
MEMBER F. T. D.

FOR THE FINEST SPORTS COVERAGE

Watch WIIC Channel

11

BASEBALL

Oct. 1—World Series

PRO FOOTBALL

Sept. 14—New York-Baltimore

Sept. 21—Washington-Chicago Bears

NCAA FOOTBALL

Sept. 20—Vanderbilt-Missouri or
Oklahoma St.-Denver

Sept. 27—Auburn-Tennessee

Oct. 4—California-Washington State

Oct. 11—Big Ten (to be selected)

Oct. 18—Regional (to be selected)

Oct. 25—Regional (to be selected)

Nov. 1—Big Ten (to be selected)

Nov. 8—Regional (to be selected)

Nov. 15—Regional (to be selected)

Nov. 22—Iowa-Notre Dame

Nov. 27—Texas-Texas A & M

Nov. 29—Army-Navy

Dec. 6—Miami-Oregon or
Boston College-Holy Cross

SPECIAL GAMES

Dec. 27—East-West and Blue-Gray

Dec. 28—Pro Football Championship
(tentative date)

Jan. 1—Rose Bowl and Sugar Bowl

Jan. 3—Senior Bowl

Jan. 11—Pro Bowl

PITT FOOTBALL

Highlights of each Pitt game will be
shown on film Sunday night, 6:30 to
7, after the Saturday game.

COLLEGE BASKETBALL

Dec. 13—"Game of the Week" series
starts. Nation's top college
teams will be seen each
Saturday.

March—NIT Games

PRO BASKETBALL

Oct. 12—NBA pro basketball begins.
Games each Sunday after-
noon.

BOXING

Friday nights at 10 p. m.

PITTSBURGH STEELERS

No.	Name	Pos.	Ht.	Wt.	College	Yrs. Pro
16	Dawson, Len	QB	6	180	Purdue	2
20	Christy, Dick	HB	5.10	180	No. Carolina St.	1
22	Layne, Bobby	QB	6.1	208	Texas	11
24	McCabe, Richie	HB	6	185	Pitt	2
25	Mathews, Ray	E-HB	6	195	Clemson	8
26	Glick, Gary	HB	6.1	190	Colorado A & M	3
27	Derby, Dean	HB	6	185	Washington	2
30	Tracy, Tom	HB	5.9	205	Tennessee	3
34	Elter, Leo	FB	5.10	205	Villanova	6
35	Younger, Paul	FB	6.3	230	Grambling	10
42	Alban, Dick	HB	6.1	195	Northwestern	7
46	Reynolds, Billy	HB	6	195	Pitt	4
50	Reger, John	LB	6.1	225	Pitt	4
57	Beatty, Ed	C	6.3	225	Mississippi	4
60	Dodrill, Dale	G	6.1	215	Colorado A & M	8
61	Karras, Ted	T	6.1	235	Indiana	1
62	Sandusky, Mike	G	6.2	230	Maryland	2
64	Krisher, Bill	G	6.1	220	Oklahoma	1
65	Nisby, John	G	6.1	230	College of Pacific	2
66	Campbell, Dick	C-LB	6.1	225	Marquette	1
68	Dougherty, Bob	LB	6.2	235	Cincinnati	2
70	Stautner, Ernie	T-E	6.2	230	Boston College	9
71	Lewis, Joe	T	6.2	260	Compton	1
72	Dess, Darrell	T	6	235	No. Carolina St.	1
74	Varrichione, Frank	T	6.2	230	Notre Dame	4
75	Krupa, Joe	T	6.2	225	Purdue	3
77	Smith, Billy Ray	E	6.3	230	Arkansas	2
80	Butler, Jack	HB	6.1	195	St. Bonaventure	8
82	Tarasovic, Geo.	LB-E	6.4	245	LSU	6
85	Bishop, Don	E	6.2	210	Los Angeles C. C.	1
86	Orr, Jimmy	E	6.2	195	Georgia	1
87	McClair, Jack	E	6.4	210	Bethune-Cookm'n	4
88	Miner, Tom	E	6.4	235	Tulsa	1
90	Lasse, Dick	E-LB	6.2	220	Syracuse	1



End Ed Bernet, left, and Linebacker Ralph Felton, right, of the Steelers get some first hand information on steelmaking from Joe

Simonin, works manager of the Allenport (Pa.) Works of Pittsburgh Steel Co. Five gridders toured the plant with Simonin.

Pittsburgh Steelers at Pittsburgh Steel

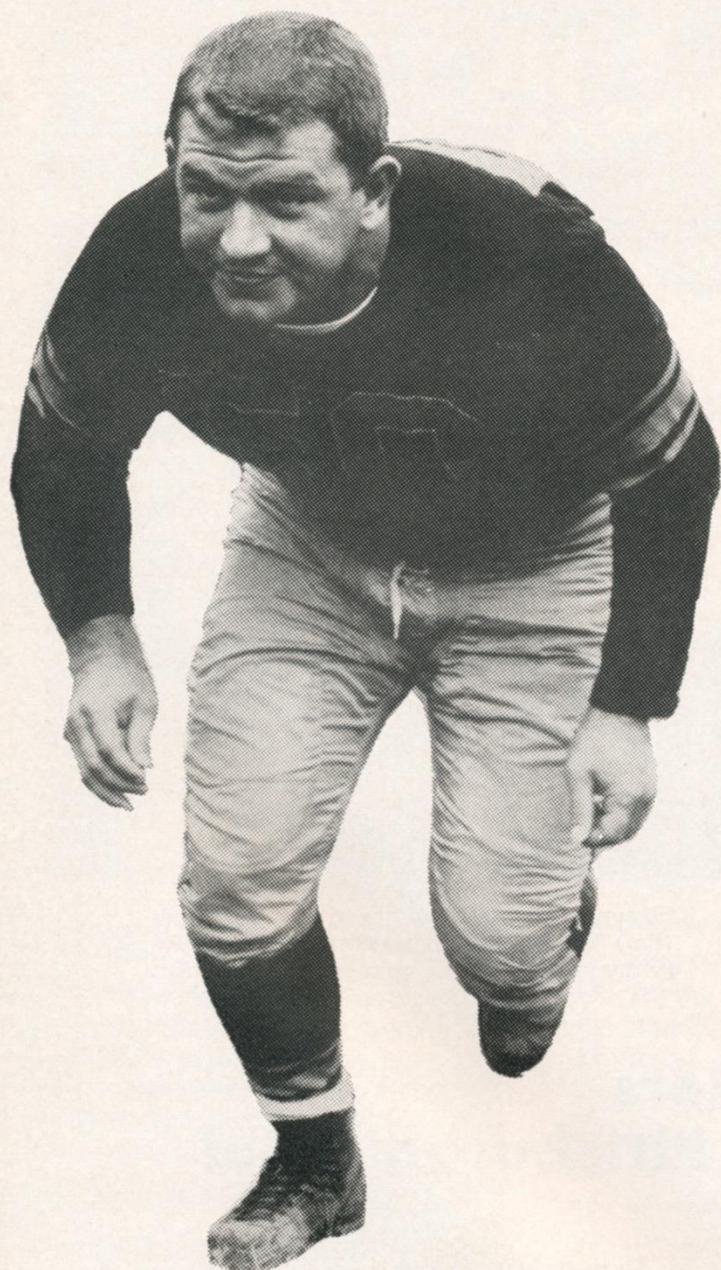
There's a source of mutual pride in two Pittsburgh teams with similar names—the hard-hitting Pittsburgh Steelers and the steelmaking team of Pittsburgh Steel Co.

Both teams take pride in their work. Both are working hard to beat records. In the steelmaking mills and on the gridiron, these two teams can be counted on for a championship try.

During their pre-season training sessions at nearby California, Pa., five Steelers took time out to tour the Allenport (Pa.) Works of Pittsburgh Steel Co. On this visit Tackles Ernie Stautner and Frank Varrichione, Linebacker Ralph Felton, Quarterback Len Dawson and End Ed Bernet saw something of the activity which gave their team its name—steelmaking.

Pittsburgh Steel Company

Grant Building • Pittsburgh 30, Pennsylvania



JOHN REGER

Linebacker . . . played freshman ball at Pitt . . . then entered military service . . . joined Steelers and is in his fourth year as a linebacker . . . strong and fast . . . loves to play . . . a resident of Sewickley.



**THE STEELERS CHOOSE
UNITED AIR LINES
FOR 1958 TEAM TRAVEL**

When you travel, why don't you,
too, fly the airline of champions?



a great
drink
begins
with a
great
whiskey



The first obligation of a whiskey is to please you. A great whiskey, like Seagram's 7 Crown, handles this duty with ease...inspiring every drink with its inimitable touch of perfection.

Say **Seagram's** and be **Sure**
OF AMERICAN WHISKEY AT ITS FINEST



What a team!

*All made for your pleasure
by Philip Morris Inc.*



STEELERS

PROBABLE STARTING LINE-UP

No.	Name	Position
86	JIMMY ORR	LE
61	TED KARRAS	LT
62	MIKE SANDUSKY	LG
57	ED BEATTY	C
72	DARRELL DESS	RG
74	FRANK VARRICHIONE	RT
87	JACK McCLAIREN	RE
22	BOBBY LAYNE	QB
25	RAY MATHEWS	LH
30	TOM TRACY	RH
34	LEO ELTER	FB

THE SQUAD

16 Dawson, QB	50 Reger, LB	74 Varrichione, T
20 Christy, HB	57 Beatty, C	75 Krupa, T
22 Layne, QB	60 Dodrill, G	77 Smith, E
24 McCabe, HB	61 Karras, T	80 Butler, HB
25 Mathews, E-HB	62 Sandusky, G	82 Tarasovic, LB-E
26 Glick, HB	64 Krisher, G	85 Bishop, E
27 Derby, HB	65 Nisby, G	86 Orr, E
30 Tracy, HB	66 Campbell, C-LB	87 McClairen, E
34 Elter, FB	68 Dougherty, LB	88 Miner, E
35 Younger, FB	70 Stautner, T-E	90 Lasse, E-LB
42 Alban, HB	71 Lewis, T	
46 Reynolds, HB	72 Dess, T	

All of the Steelers away games are brought to you by MARLBORO. Check your newspaper for time and channel.



GIANTS

PROBABLE STARTING LINE-UP

No.	Name	Position
44	KYLE ROTE	LE
71	M. L. BRACKETT	LT
62	BOB MISCHAK	LG
55	RAY WIETecha	C
68	AL BARRY	RG
72	FRANK YOUSO	RT
85	BOB SCHNELKER	RE
42	CHARLEY CONERLY	QB
16	FRANK GIFFORD	LH
24	PHIL KING	RH
33	MEL TRIPLETT	FB

THE SQUAD

11 Heinrich, QB	42 Conerly, QB	72 Youso, T
13 Maynard, HB	44 Rote, E	75 Katcavage, T
16 Gifford, HB	45 Tunnell, HB	76 Grier, T
20 Patton, HB	48 Hughes, HB	77 Modzelewski, T
21 Karilivacz, HB	55 Wietecha, C	79 Brown, T
22 Lott, HB	60 Guy, G	80 MacAfee, E
24 King, FB	61 Jelacic, E	81 Robustelli, E
29 Webster, HB	62 Mischak, G	84 Svare, LB
30 Svoboda, LB	66 Stroud, G	85 Schnelker, E
33 Triplett, FB	68 Barry, G	88 Summerall, E
34 Chandler, HB	70 Huff, G	89 Livingston, LB
41 Crow, HB	71 Brackett, T	

All of the Steelers away games are brought to you by MARLBORO. Check your newspaper for time and channel.

.....enjoy its

welcome lift!



STEELERS FIVE YEAR RECORD VS 1958 HOME OPPONENTS

WASHINGTON REDSKINS

Steelers		Opponent
9	1953	17
14		13
37	1954	7
14		17
14	1955	23
17		28
30	1956	13
23		0
28	1957	7
3		10

NEW YORK GIANTS

Steelers		Opponent
24	1953	14
14		10
6	1954	30
3		24
30	1955	23
19		17
10	1956	38
14		17
21	1957	10
0		35

CLEVELAND BROWNS

Steelers		Opponent
16	1953	20
16		34
55	1954	27
7		42
14	1955	41
7		30
10	1956	14
24		16
12	1957	23
0		24

CHICAGO CARDINALS

Steelers		Opponent
31	1953	28
21		17
14	1954	17
20		17
14	1955	7
13		27
14	1956	7
27		38
29	1957	20
27		2

PHILADELPHIA EAGLES

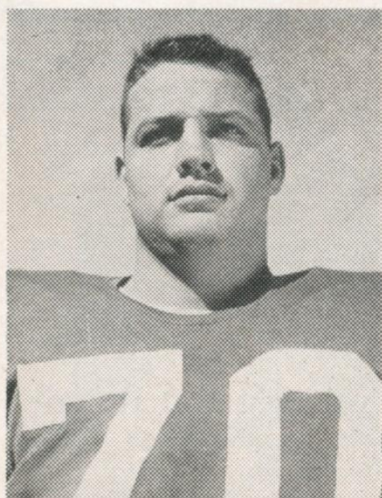
Steelers		Opponent
7	1953	35
7		23
22	1954	24
17		7
13	1955	7
0		24
21	1956	35
7		14
6	1957	0
6		7

CHICAGO BEARS

No meetings in League competition since 1947

QUAKER STATE COCA-COLA BOTTLING COMPANY

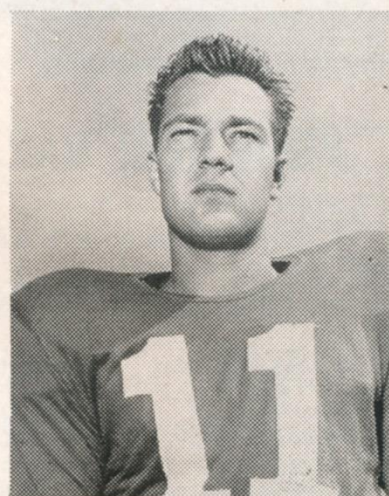
5722 CENTRE AVENUE, E. E., PITTSBURGH 6, PENNSYLVANIA



Sam Huff, Guard, Giants



Andy Robustelli, End, Giants



Don Heinrich, Back, Giants

Family Day At The Stadium, December 13th

NORTH SIDE DEPOSIT BANK THE FRIENDLY BANK

516 Federal Street CEDar 1-6900
Member of Federal Deposit Insurance Corporation

COLONIAL SUPPLY CO.

Mill and Mine Supplies

217 Fort Pitt Boulevard COurt 1-4488

Allegheny Contracting Industries INCORPORATED

EIGHTH AND BINGHAM STREETS
PITTSBURGH 3, PA.

HEmlock 1-7740

GENERAL CONSTRUCTION
ENGINEERING
ASPHALT • CONCRETE
EXCAVATING



PENN ROSE BAR & GRILL

Cocktails with Meals a Specialty

144 Sixth Street

Pittsburgh 19, Pa.

Phone ATLantic 1-1170

We are one of the oldest and largest heating contractors in Western Penna.

We have thousands of satisfied customers, and have been in business since 1925.

We specialize in repair and installation of gas, coal, steam, hot water boilers.

We also maintain special departments for real estate and church work.

No job is too large or too small.

Free engineering surveys, and estimates.

The next time you have a heating problem, CALL CEDar 1-0452 for quick emergency service.

Allegheny Furnace and Repair

322 Federal Street Pittsburgh 12, Pa.

If it's for the heating system we have it!

Largest Diversified Stock of Tires and Tubes in Pennsylvania

McPeak Tire Corp.

240 Boulevard of the Allies, Pittsburgh, Pa.

COurt 1-5559 - 60 - 62



Johnny Laughlin's

SHAMROCK ROOM



PITTSBURGH'S SPORTSMEN'S RETREAT

STEELERS TICKET AGENCY

917-919 WESTERN AVE.

CEdar 1-2468

N. S., PITTSBURGH, PA.

ST

with **ELECTRONIC**

"Magic-Eye" **INSPECTION**



Every bottle of today's Premium Duquesne is electronically inspected to assure perfect purity! In fact, Duquesne is the only beer that gives you both natural taste and perfect purity! So for pure enjoyment . . . have a "DUKE!"

NEW YORK GIANTS

No.	Name	Pos.	Ht.	Wt.	College	Yrs. Pro
11	Heinrich, Don	QB	6	180	Washington	5
13	Maynard, Don	HB	6	178	Texas Western	1
16	Gifford, Frank	HB	6.1	205	So. California	7
20	Patton, Jim	HB	5.10	180	Mississippi	4
21	Karilivacz, Carl	HB	6.1	190	Syracuse	6
22	Lott, Billy	HB	6	195	Mississippi	1
24	King, Phil	FB	6.4	225	Vanderbilt	1
29	Webster, Alex	HB	6.3	210	N. C. State	4
30	Svoboda, Bill	LB	6	215	Tulane	9
33	Triplett, Mel	FB	6.1	215	Toledo	4
34	Chandler, Don	HB	6.2	205	Florida	4
41	Crow, Lindon	HB	6.1	200	So. California	4
42	Conerly, Charley	QB	6.1	185	Mississippi	11
44	Rote, Kyle	E	6	205	SMU	8
45	Tunnell, Emlen	HB	6.1	200	Iowa	11
48	Hughes, Ed	HB	6.1	180	Tulsa	4
55	Wietecha, Ray	C	6.1	225	Northwestern	6
60	Guy, Buzz	G	6.2	240	Duke	1
61	Jelacic, Jon	E	6.3	230	Minnesota	1
62	Mischak, Bob	G	6	230	Army	1
66	Stroud, Jack	G	6.1	235	Tennessee	6
68	Barry, Al	G	6.2	230	U. S. C.	3
70	Huff, Sam	G	6.1	230	West Virginia	3
71	Brackett, M. L.	T	6.5	250	Auburn	3
72	Youso, Frank	T	6.4	260	Minnesota	1
75	Katcavage, Jim	T	6.3	230	Dayton	3
76	Grier, Roosevelt	T	6.5	270	Penn State	3
77	Modzelewski, Dick	T	6	260	Maryland	6
79	Brown, Roosevelt	T	6.3	245	Morgan State	6
80	MacAfee, Ken	E	6.2	215	Alabama	5
81	Robustelli, Andy	E	6.1	230	Arnold	8
84	Svare, Harland	LB	6	215	Washington State	6
85	Schnelker, Bob	E	6.4	215	Bowling Green	6
88	Summerall, Pat	E	6.4	235	Arkansas	7
89	Livingston, Cliff	LB	6.3	215	UCLA	5

Have a "Duke"





BROOKLINE

SAVINGS & TRUST COMPANY

OPEN

NOON TILL 9

Tuesdays & Thursdays

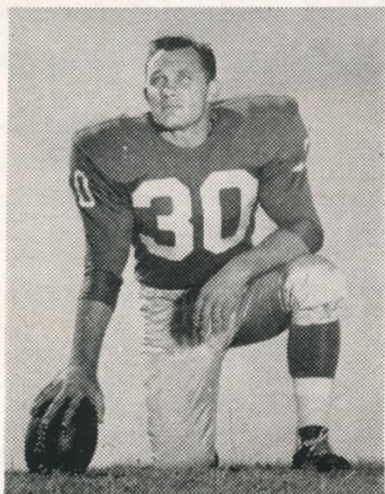
9 TO 5

Monday, Wednesday & Friday

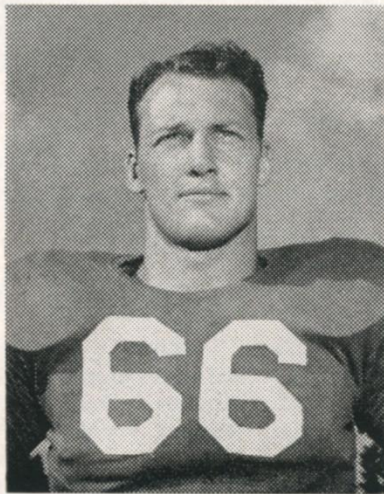
820 BROOKLINE BLVD.

426 McNeilly Rd. • FI 1-4800

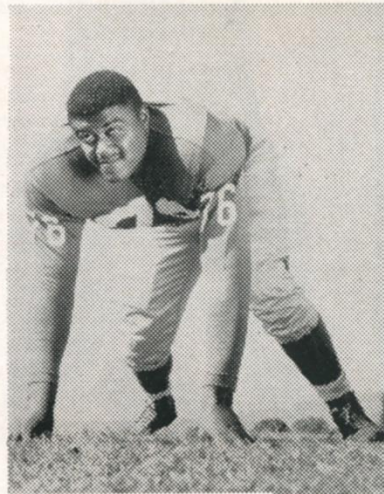
MEMBER FEDERAL DEPOSIT INSURANCE CORP.



Bill Svoboda, Linebacker, Giants



Jack Stroud, Guard, Giants



Roosevelt Grier, Tackle, Giants

J. KENNY TRANSFER

INC.

Kenny Warehouse, Inc.

Phone SPalding 1-4885

A. Mamaux & Son

CANVAS, ASBESTOS, PLASTIC

By the Yard or Roll

TARPAULINS

100,000 Square Feet in Stock

120 Boulevard of the Allies

COurt 1-3500

SWEET CLEAN Laundry & Cleaners

*Elegant Shirts
and
Bonded Pick-up*

MOntrose 1-8700

B. M. O'HANLON *Prescription Optician*

ATlantic 1-0503

2050 JENKINS ARCADE

PITTSBURGH, PA.

THIRTY-ONE YEARS YOUNG

While waiting for his wife to arrive at Willow Run airport in Detroit last month, Bobby Layne was informed over the loudspeaker that a call was waiting for him. Over the phone the husky blond received word that he was the property of the Pittsburgh Steelers. Before leaving the airport Layne had reservations for his wife and himself on a flight to Pittsburgh that same evening.

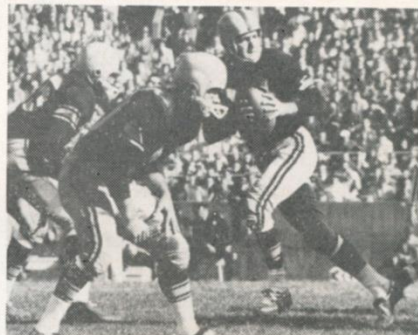
Riding out to the South Park practice field the following morning with defensive halfback Richie McCabe, Layne lost no time in asserting himself as a man with a purpose. As he shook hands with his new team-mates Layne began asking pointed questions. "Who're our best long receivers?" "Who's done most of the ball carrying?" "How's Tracy working out?" Before the practice at the South Park field was completed the rest of the Steelers were aware that their new field general, a ten year veteran, had the mental attitude of a rookie.

Layne's ten years in the National Football League have been stormy and filled with ups and downs. Drafted originally by the Steelers in 1948 the Lubock, Texas, native was traded to the Chicago Bears when he refused to play in the single wing. At Chicago Layne collected splinters watching Sid Luckman and Johnny Lujack direct the talent-laden Bears. At the end of the '48 season Layne was traded to the New York Bulldogs. Bobby directed the Bulldogs to a rather inglorious record that included one win and one tie. In a series of player and franchise switches in 1950 Layne wound up in Detroit where he was to achieve true stardom under Buddy Parker. Just missing the league title in 1951, the Lions came back in 1952 to grab the world championship. Three times in the following five years Layne led Detroit to division championships. Last year in an early December game with the Browns, Layne suffered a broken leg and a dislocated ankle. Word went out that the veteran quarterback was considering quitting the game and even if he didn't quit he would never regain his old form. Fortunately for the Steelers neither of these predictions came true.

Layne's name can be found in most NFL passing records right behind Sammy Baugh. As cool a performer as pro ball has ever seen, Layne spots his receiver, then delays until the last moment before letting fly. He possesses unerring accuracy on passes up to fifty and sixty yards. Layne's short passes are of the bullet variety that are most difficult to intercept. Bobby's ball-handling is above average, at least. His fakes are deceptive and his hand-offs and pitch-outs are sure. As icing on the cake the husky blond has always shown an eagerness and an ability to run with the ball. Hardly the fastest man on the team, Layne jokes about his own running ability, but he's a difficult man to lay a hand on when he finds his receivers covered.

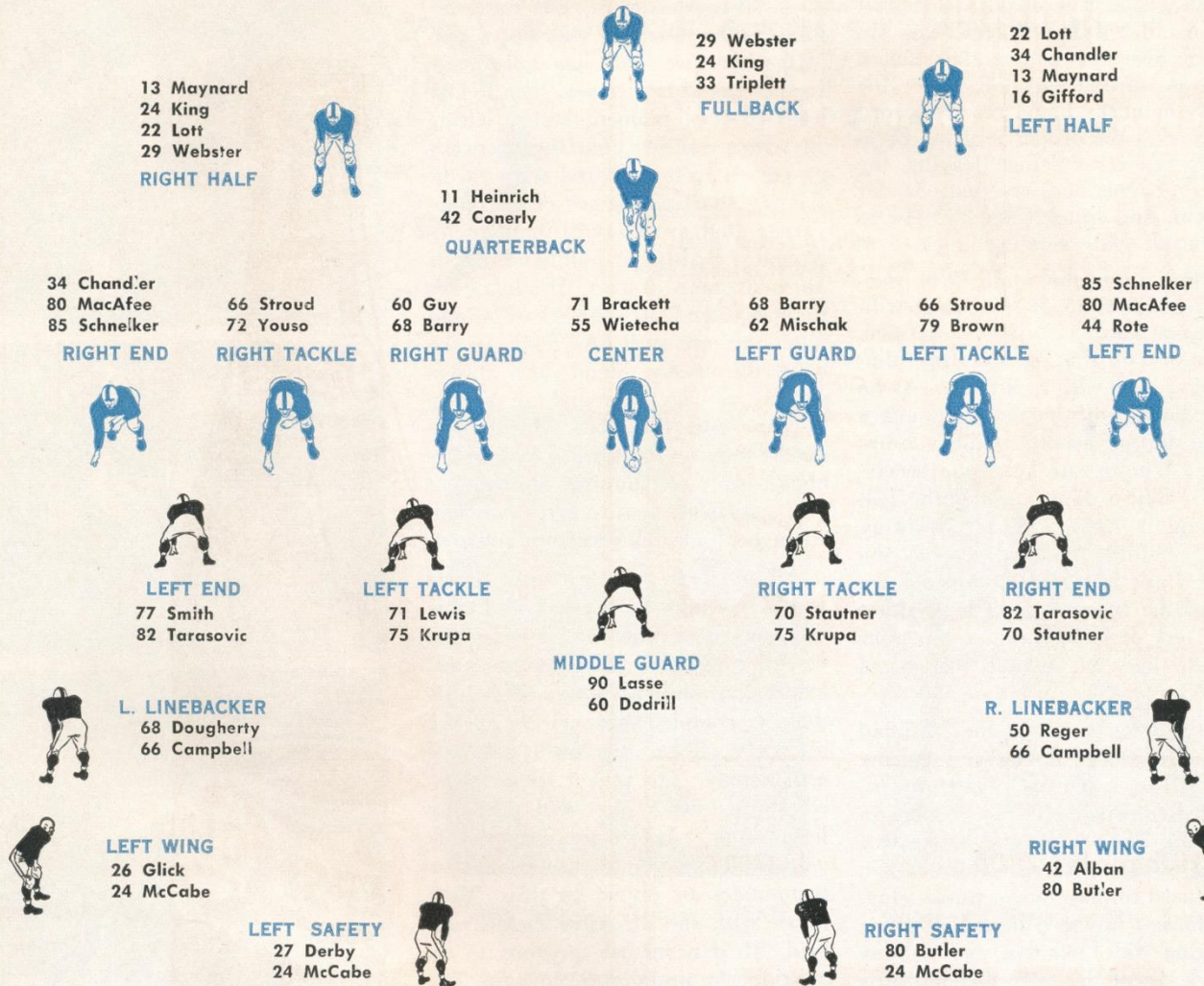
All of these tremendous assets would perhaps be wasted if Layne did not possess the one all-important essential of any great quarterback, leadership ability. Layne feels his duty is complete supervision of the offensive play of the team and acts accordingly. The player whose missed block foils a play will probably hear about it before the next play is called. One might expect his fellow team-mates to object to this. Most agree with the offensive tackle who said "He'd never ask anybody to do anything he wouldn't do himself. The guy has guts coming out all over him. The heaviest equipment he wears are his shoes because he doesn't want to be slowed down by extra weight. The morale of this team has improved 100% since he came here simply because some of his desire to win has rubbed off on the rest of us."

At thirty-one, the six-two, 208 lb. dynamo might be considered in the twilight of his career, but he has given no thought to retirement. Recently, in a hesitating Texas drawl, Layne made a statement that fell on anxious ears. "Ah wouldn't even think of quitting befo' we got a championship here in Pittsburgh, and even then ah'd probably stick around awhile because ah sorta' like to be on top". . . That's the only place a guy like Mr. Layne belongs.



When THE GIANTS Have The Ball

GIANTS OFFENSIVE DEPTH



STEELERS DEFENSIVE DEPTH

When THE STEELERS Have The Ball Turn To Page 6

We Salvage and Recondition Athletic Goods—Band Uniforms

U. S. INDUSTRIAL GLOVE Co. of Pa.

1920 ROSE STREET, PITTSBURGH 19, PA.

Steelers' Uniform Valet

Call Us For An Opportunity To Bid

ATlantic 1-5935 - 1-6439



headquarters for the STEELERS

THE *Pick-Roosevelt*

Air-
Conditioned
Rooms
Radio & TV
Children Free

after the game . . .

meet your friends at The
Pick-Roosevelt for delicious
food and beverages in The
Sylvan Room, Hide-Away
Bar and Gill-'n'-Quill.

E. A. Leach, Manager
ATlantic 1-3700



Free Teletype Reservations for all Albert Pick Hotels

HUbbard 1-7400

J. J. FERRY

FERRY **ELECTRIC COMPANY**

Electrical Contractors

430 East Warrington Avenue
Pittsburgh 10, Pennsylvania



Say Pepsi Please

METROPOLITAN BOTTLING CO.

400 GRAHAM STREET

McKEES ROCKS

FE 1-6767

FOOTBALL

THE GREATEST OF ALL THE
BOWL GAMES

LOS ANGELES
MEMORIAL

COLISEUM

SUNDAY JAN. 11th

THE NATIONAL LEAGUE

ALL-STAR

EAST VS
WEST



PRO BOWL GAME



TOM TRACY

This versatile back has shown the fans plenty of speed, drive and agility. Performed brilliantly against the Eagles.

TODAY

ENTERTAINMENT

JEANNETTE HIGH SCHOOL BAND

This talented, sparkling group will perform at half-time under the direction of Mr. John Loudszun.

VERNON LODGE'S DIXIELANDERS

This melodious aggregation will entertain throughout the game. Tom Conway, vocal soloist, will continue to delight the fans with his talents.

OFFICIALS

Referee	William Downes—3
Umpire	Carl Bauer—15
Head Linesman	John Highberger—48
Back Judge	Stanley Jaworowski—29
Field Judge	James A. Kane—38

NFL LEADERS

Rushing — Brown, Browns, 1011 yards on 152 tries.
Passing — LeBaron, Redskins, 933 yards on 52 completions.

Receivers — Retzlaff, Eagles, 491 yards on 34 catches.

Scoring — Brown, Browns, 90 points on 15 TDs.

Punting — Baker, Redskins, 44.8 average for 28.

Punt Returns — Arnett, Rams, 198 yards on 13 tries.

Kickoff Returns — Lyles, Colts, 367 yards on 9 tries.

Interceptions — Nelson, Colts, 199 yards on 7 pilfers.



WORLD WIDE
COVERAGE

WE INSURE THE STEELERS

HALE & HALE AGENCY

210 Grant Street

Greater Pittsburgh Airport

COurt 1-3355 or 1-3359

THE 1959 BUICK



THE NEWEST IS HERE

SEE IT AT
**NORTH SIDE
BUICK CO.**

Established 1920

100 WEST STOCKTON AVENUE

FAirfax 1-7800

National Football League Schedule

SUNDAY, NOV. 23

Pittsburgh at Chicago Cards	1:05
Chicago Bears at Detroit	1:35
Los Angeles at Baltimore	2:05
Philadelphia at Cleveland	2:05
San Francisco vs. Green Bay at Milwaukee	1:05
Washington at New York	2:05

THURSDAY, NOV. 27 (Thanksgiving)

Green Bay at Detroit	12:00
----------------------	-------

SUNDAY, NOV. 30

Chicago Bears at Pittsburgh	1:30
Los Angeles at Chicago Cards	1:05
Philadelphia at New York	2:05
San Francisco at Baltimore	2:05
Washington at Cleveland	2:05

SATURDAY, DEC. 6

Baltimore at Los Angeles	1:35
--------------------------	------



Frank Gifford, Back, Giants

SUNDAY, DEC. 7

Pittsburgh at Washington	2:05
Chicago Cards at Chicago Bears	1:05
Cleveland at Philadelphia	1:35
Green Bay at San Francisco	1:35
New York at Detroit	1:35

SATURDAY, DEC. 13

Chicago Cards at Pittsburgh	1:30
-----------------------------	------

SUNDAY, DEC. 14

Baltimore at San Francisco	1:35
Cleveland at New York	2:05
Detroit at Chicago Bears	1:05
Green Bay at Los Angeles	1:35
Philadelphia at Washington	2:05

SUNDAY, DEC. 28

World's Championship Playoff in Home City of Eastern Conference Champions.

SUNDAY, JAN. 11, 1959

All Star Pro-Bowl Game at Los Angeles

Represented for National Advertising by SPENCER ADVERTISING COMPANY, 271 Madison Ave., New York City

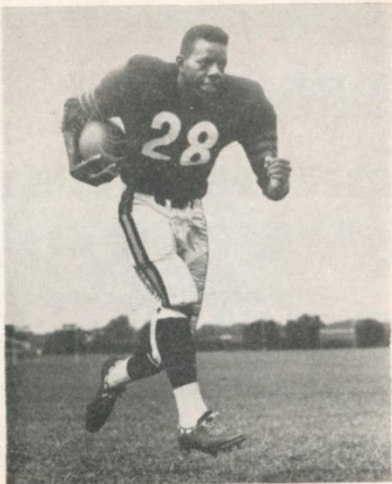


Mill, Mine, Machinists, Industrial and Railroad Supplies

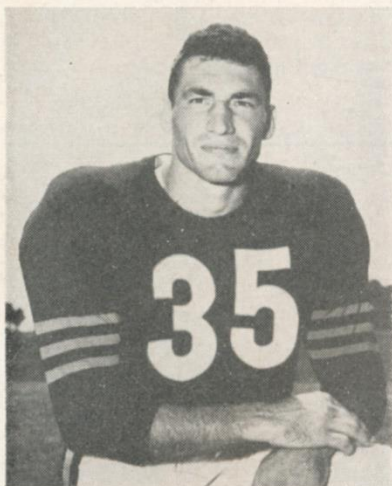
109-111 WOOD STREET

GRant 1-2770

PITTSBURGH, PA.



Willie Gallimore, Back, Bears



Rick Casares, Back, Bears



Harlin Hill, End, Bears

Morrison & McCluan, Inc.

PITTSBURGH, PA.


Distributors of . . .

PictSweet Fruits and Vegetables
SeaPak Shrimp
Welch's Grape Juice
Grand Duchess Steaks
Jewell's Chicken
Blue Water Fish
Sara Lee Bakery Products
Stouffer's Pre-Cooked Foods
Rath Meats
Sunkist Lemon Products

PREMIUM QUALITY FROZEN FOODS

Sold at Better Stores Everywhere





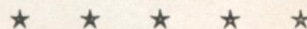
**BE WISE!
SAVE**

For His Future

Open a Savings Account Now!

LIBERAL DIVIDENDS
ACCOUNTS INSURED UP TO \$10,000

Pittsburgh Home Savings
AND LOAN ASSOCIATION
438 WOOD ST. (Downtown) AT. 1-0780



No End of Pleasure Here

BOOT & SADDLE COCKTAIL LOUNGE

Hotel Webster Hall

4415 Fifth Avenue
Pittsburgh 13, Pa.
MA 1-7700

FOOD SERVICE UNTIL 2 A.M.

THE NEW ASCOT ROOM
Elegance In Dining

150 Car Parking Lot Adjoins Hotel

READY MIXED CONCRETE

Phone ATLantic 1-5590
or HAZel 1-0117

MARION
COAL & SUPPLY COMPANY

Jones Law Building

**The Most Complete
Selection in Pittsburgh!**



621 LIBERTY AVE.
DOWNTOWN PITTSBURGH

For All Your
**OFFICE FURNITURE
OFFICE EQUIPMENT
OFFICE SUPPLIES**

Always Be Sure To Call

ATLantic 1-3737

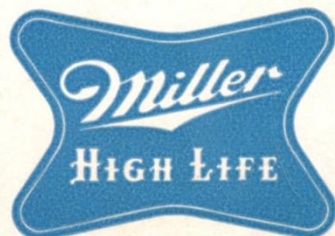
*"The Business Man's Department
Store Since 1879"*



"I'm glad they
still brew a beer
like this!"



BREWED IN THE GREAT TRADITION



ONLY IN MILWAUKEE

© Miller Brewing Co., Milw., Wis.

NATURAL TASTE

PERFECT PURITY

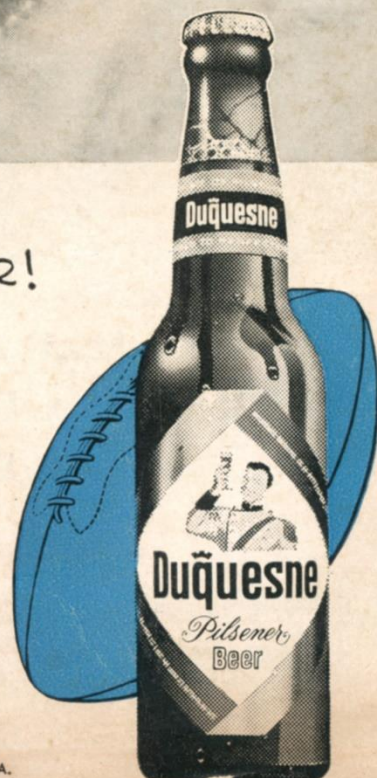
"Have a
DUKE!"



ANOTHER GREAT SEASON FOR A GREAT BEER!

ELECTRONICALLY
INSPECTED

Duquesne



THE DUQUESNE BREWING COMPANY, PITTSBURGH, PA.