

YANKEE STADIUM

OFFICIAL PROGRAM • 50 CENTS



vs.

WASHINGTON

REDSKINS

NOVEMBER 23, 1958



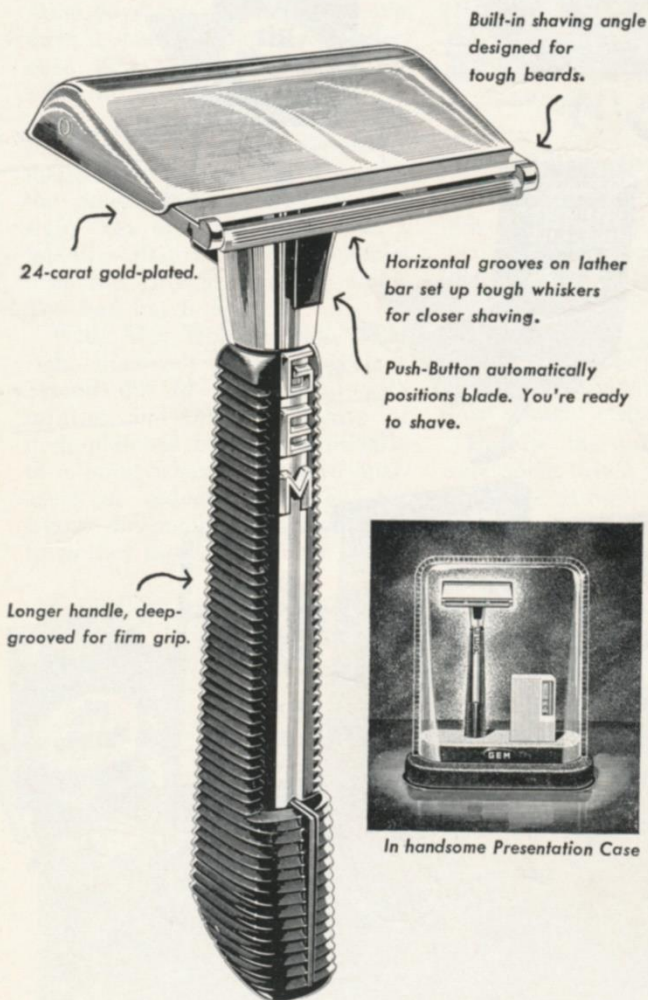
Pick
your
pleasure

PHILIP MORRIS INC.

The Quality  *House*

Marlboro pack or box • Philip Morris pack or box • Parliament pack or box • Benson & Hedges cigarette case box

GEM INTRODUCES *PUSH-BUTTON* RAZOR FOR MEN WITH TOUGH BEARDS

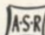


There's never been a razor like the new Gem Push-Button Razor. Teamed up with extra-heavy, extra-sharp Gem Blades, it's the most powerful combination in history for shaving tough beards. Get tough with your tough beard—get the new Gem Push-Button Razor in the handsome Presentation Case today.

Avoid '5 o'clock shadow' with Gem.

Handsome Presentation Case contains Gem Push-Button Razor and Blades in Dispenser . . .

\$1⁰⁰

PRECISION  PRODUCTS

OFFICIAL PROGRAM NEW YORK GIANTS



vs. WASHINGTON REDSKINS
YANKEE STADIUM • Nov. 23, 1958

Volume 33

Number 4

CONTENTS

Back to Work	3
Giant Profile: Phil King	5
Giant Album	7 and 13
Coming Attractions	9
Jottings on the Giants	11
Giants' 1958 Statistics	15
Redskins' Roster and Line-up	16
Giants' Roster and Line-up	17
Looking Over the Redskins	19
Yankee Stadium Services	21
Redskin Stars	23
Giant-Redskin Series	25
N. F. L. Officials' Signals	27
Giant Blackboard: A Capitol Play	29
N. F. L. Champions, Play-offs	31
Today's N. F. L. Pairings, Team Record	32
N. F. L. Standings, Leaders	32

NEW YORK FOOTBALL GIANTS

John V. Mara *President-Treasurer*
Wellington T. Mara *Secretary*
Raymond J. Walsh *General Manager*

Jim Lee Howell *Head Coach*
Vince Lombardi *Offensive Coach*
Tom Landry *Defensive Coach*
John Dell-Isola *Line Coach*
Ken Kavanaugh *End Coach*

John Johnson, Sid Moret and John Dziegiel *Trainers*
Dr. Francis Sweeney *Physician*
Dr. Arthur Croker *Dentist*

Robert Daley *Publicity Director*

This book published by
HARRY M. STEVENS, Inc.
320 Fifth Avenue
New York 1, N. Y.



The "All-American" Team

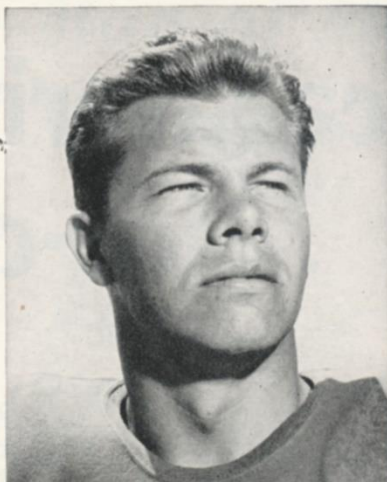
The brands all America selects
for its smoking pleasure

Back to Work

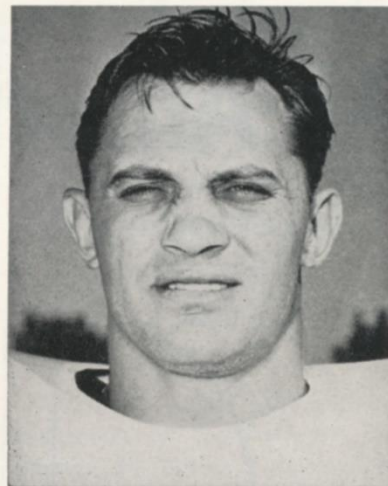
IT was a disappointment but hardly a shock that the Giants lost to the Steelers. That's the hard, cruel way of life in the rough, tough National Football League. Some days you're up, some days you're down and some days it doesn't make much difference how you are because the other team is invincible.

In retrospect, that's about what happened in Pittsburgh. The automatic reaction after the defeat by the Steelers was to say, with a sigh, "Oh well, the Giants had a letdown after those big victories over the Browns and the Colts. Too bad but it figured."

With Alex Webster, Don Heinrich, Roosevelt Brown and Jack Stroud out of the line-up with injuries and other mainstays of both platoons battered physically to a point where they were operating at reduced efficiency, the Giants did not begin to match the form they displayed against Cleve-



KYLE ROTE



BILL SVOBODA

land and Baltimore.

However, it should not be forgotten that they were playing against the hottest team in the league. Always tough defensively, the Steelers have meshed into a potent offensive force under the direction of Bobby Layne and, in beating the Giants, hung up their third straight victory.

Despite the final result, there were some bright spots for Coach Jim Lee Howell in Pittsburgh. The Giants were an efficient looking outfit in seizing a 10-0 lead in

the first twenty-five minutes of the game.

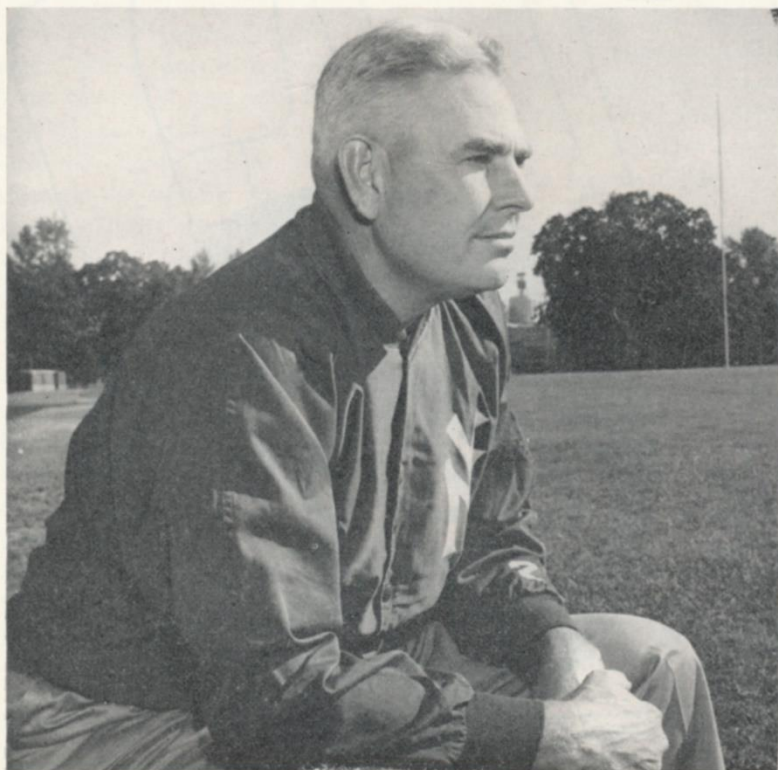
Frank Gifford demonstrated that he has almost completely recovered from his knee injury. Phil King did another fine job, as a fill-in for Webster. The rookie linemen, Frank Youso and Bob Mischak, added to the good impression they have made over the season. Cliff Livingston made tackles all over the lot from the left linebacker spot. Don Chandler punted sensationally.

Drained emotionally and downright exhausted after their tremendous efforts on the previous two Sundays, the Giants could not hold the pace over the full route. But it was encouraging, at least, to see that they had not completely lost their touch.

The problem now is clear. To stay in the race, the Giants can afford no more letdowns. Kyle Rote and his companions of the offensive platoon must keep the ball moving for longer periods. Bill Svoboda and his cohorts of the defensive platoon must maintain more constant pressure.

Today's game with the Redskins shapes up as one of the key contests of the season. If the Giants can repeat their 21-14 Washington victory over the 'Skins, they will be in a strong position to launch a stretch drive for the flag.

Back to work, men!



JIM LEE HOWELL

GIANTS AT STADIUM

Nov. 23.....Washington Redskins

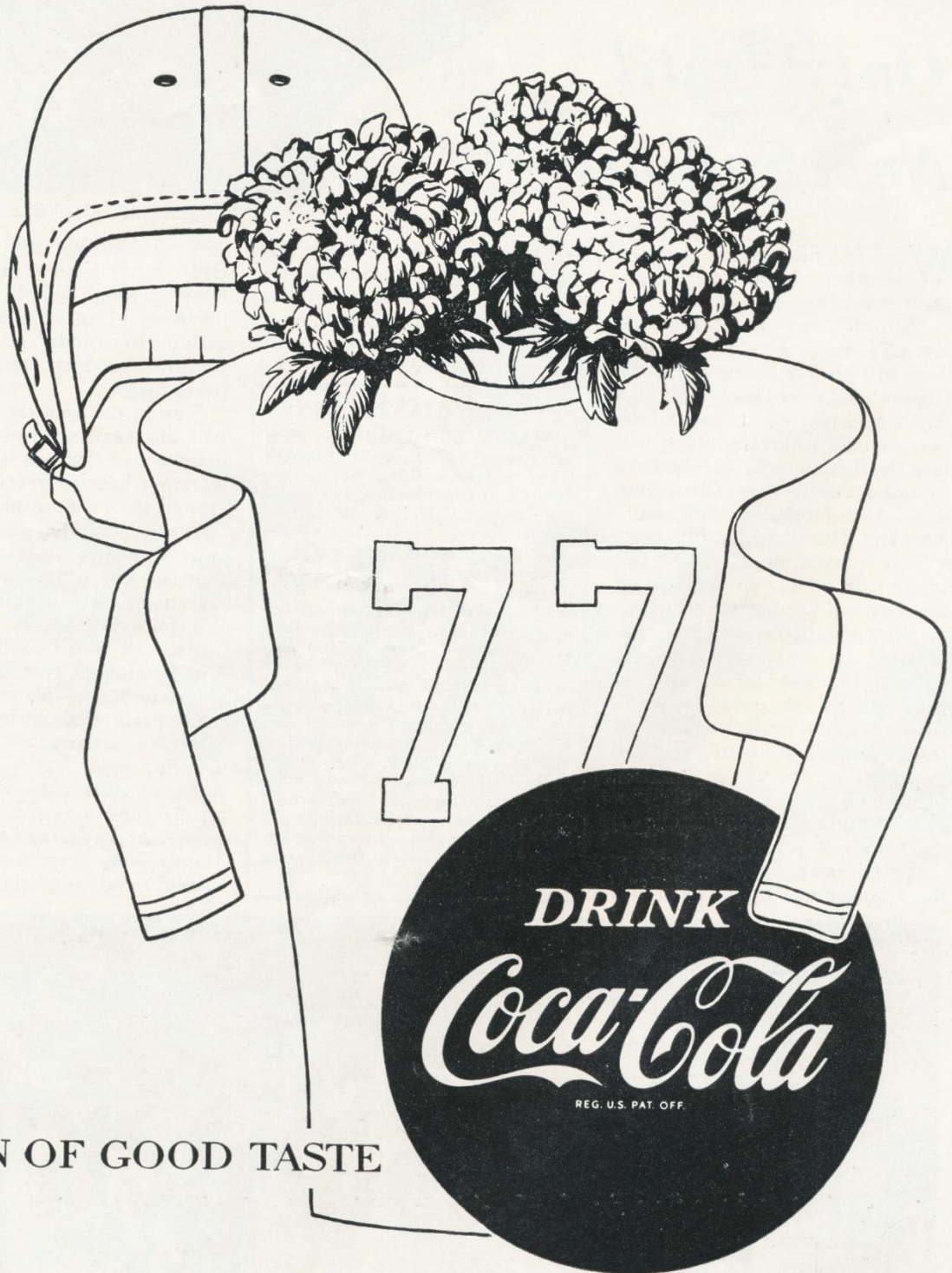
Nov. 30.....Philadelphia Eagles

Dec. 14.....Cleveland Browns

Kick-Off Time—2:05 P.M.

PLEASE USE ENTRANCE RAMP NEAREST YOUR SEAT

All-America favorite ...ice-cold Coke



SIGN OF GOOD TASTE

"Coke" is a registered trade-mark.

Phil King—Man of Many Talents

**Giant Rookie Has Proved
Capable at Fullback as
Well as Halfback**

FEW football players ever have reached the big time with as many qualifications as the Giants' versatile rookie halfback Phil King.

King, 6 feet 4, 223 pounds, a 10-second dash man, has the big four—brains, brawn, speed and desire. Also, pro football fits in exactly with the long term plans the personable Vanderbilt youngster has made for his life.

Asked whether he preferred to play fullback or halfback, King replied: "I don't care where I play, just so long as I play." As a collegian, he made runs of 88 and 76 yards, plus others that were shorter, but resulted in the same six points.

"I prefer running inside," he said. "When you try to sweep the ends, you run a long way without gaining any ground, before you cut downfield. When you go through the middle you're gaining with every step. It just takes maybe one block and you're gone."

The Giants use King at fullback as well as halfback because of his size, plus the need to have a fullback who is a skilled receiver. King has the range and speed of an end, together with a world of power. These qualities make him an excellent spare wheel in the Giant backfield. He also is a capable punter.

As a collegian he was named to the Senior Bowl and Blue-Grey Games (in the latter he combined



PHIL KING

with fellow rookie Don Maynard to score all Grey points in a 21-20 victory). He played with Vanderbilt in the Gator Bowl and starred for the College All-Stars as they trounced the Detroit Lions.

That game was his baptism as a pro. He names it his top football thrill so far.

As for brains, King plans to become a lawyer. His degree is in business administration and he will enter law school as soon as possible, either in New York, or at Vanderbilt. He is married and the father of an infant daughter.

Law school must wait for a while. An ROTC second lieutenant in the Transportation Corps, he will enter the army for six months training next January. This will enable him to report to the Giants'

**An Embryonic Lawyer, the
Vanderbilt Alumnus Also
Is a Skilled Musician**

camp next summer without missing a season.

Thus he would need perhaps five years to complete his law courses. He not only loves football, but sees in it a way to finance his future. He is 22 years old.

Also under the "brains" category, the former Vanderbilt captain and No. 1 draft choice of the Giants has been playing the clarinet since he was eleven years old.

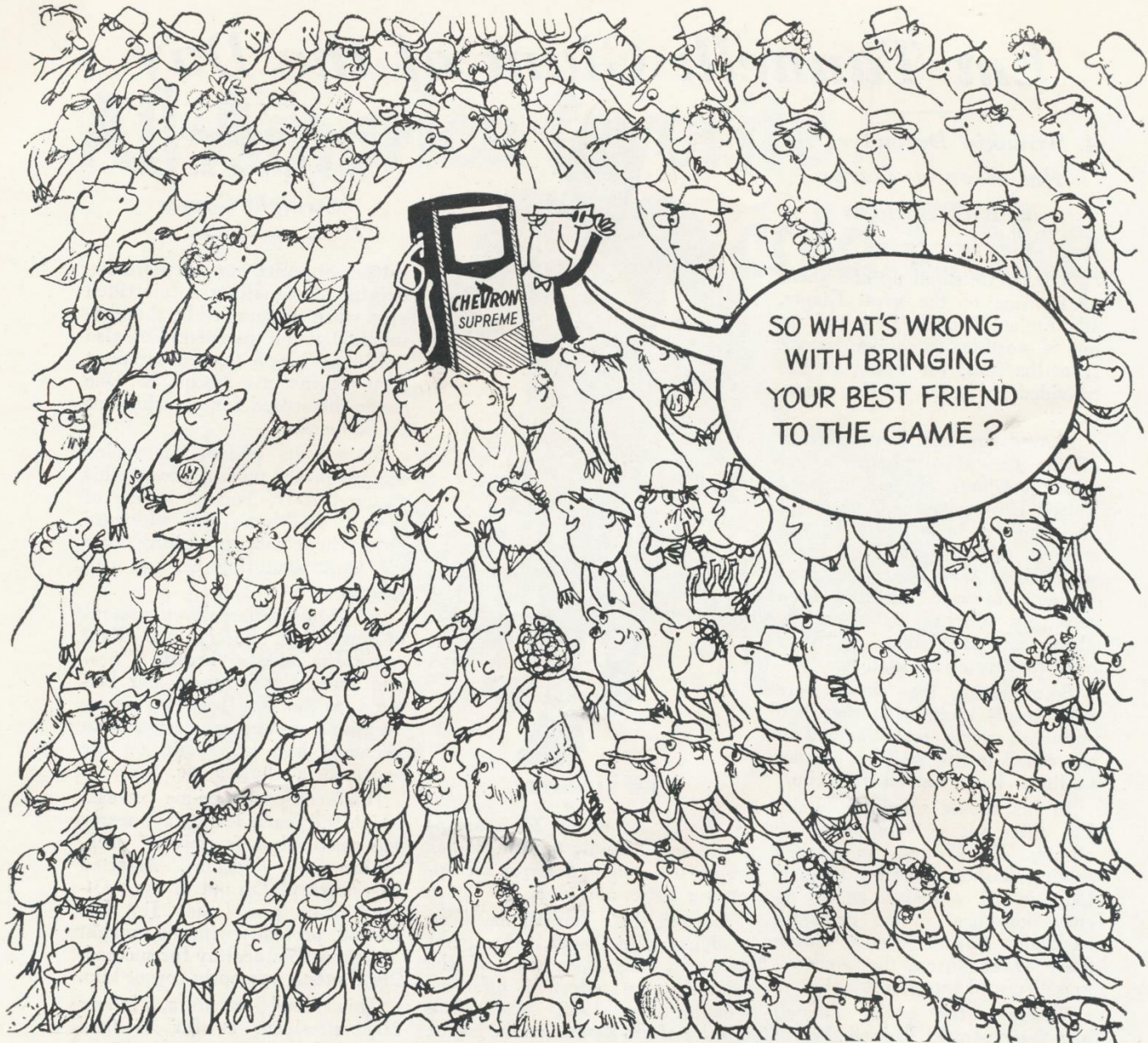
"But as soon as I got to high school, why of course I was on the football team, so I was never able to play in a full-fledged band. I still play at home, for myself and my wife Pat, mostly."

King says he likes all kinds of music, from Mantovani to the classics, except "country music, which I can't stand," and opera, which he feels he does not know sufficiently yet. "You don't get much opportunity to go to the opera in Knoxville," he says. He is addicted to hi-fi and has an elaborate rig at home.

Known as "The Chief," because he is part Indian, King was described by one Vanderbilt enthusiast as a player who "runs with the speed of a deer and hits with the crunching power of the buffalo."

Judging from his play in his increasingly frequent appearances with the Giants, the intelligent, soft-spoken Tennessean is every bit as hard to bring down as the above description implies.

PLEASE USE ENTRANCE RAMP NEAREST YOUR SEAT



It's certainly O.K. with *us*, Hy Finn! Matter of fact, *most* of the American Motorists who've tried new CHEVRON Supreme Gasoline feel that way. So if *you* haven't discovered this outstanding super-premium gasoline yet, don't wait any longer. Make friends with CHEVRON Supreme and its great teammate, RPM Supreme Motor Oil, *yourself* — at any CALSO Station.

PRODUCTS OF THE CALIFORNIA OIL COMPANY



CHEVRON
SUPREME GASOLINE
At all CALSO stations!



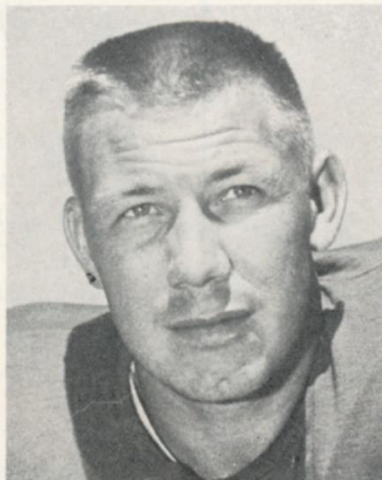
TM'S "CHEVRON," "RPM," CHEVRON DESIGN®

Giant Album



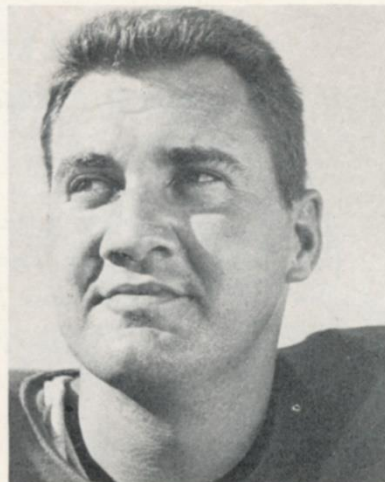
Char. Conerly

In a decade of stalwart service with the Giants, **Charley Conerly (42)** has won respect as one of pro football's great competitors. Going into this season, the former All-America from Ole Miss has thrown 134 TD passes. Only Sam Baugh (187) and Sid Luckman (139) had more. Originally a single-wing tailback, Charley has made himself over into a polished T quarterback.



Lindon Crow

Lindon Crow (41) is a new Giant but an old hand at pro football. An all-around star at USC, he was the Cardinals' No. 2 draft choice in 1955 and played regularly at defensive halfback for the Chicago South Siders for three seasons, leading the league in pass interceptions in 1956. The Giants got him, with Pat Summerall, for Dick Nolan and Bob Conrad last summer.



Pat Summerall

George Allen Summerall (88), more familiarly known as Pat, is a 7-year pro who came to the Giants from the Cardinals in a 1958 pre-season trade. A long-range place-kicking specialist whose 250 NFL points include field goals of 50 and 49 yards, he also is serviceable as a defensive end.



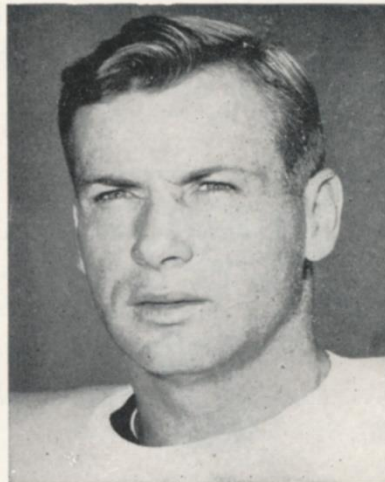
Frank Youso

Frank Youso (82), No. 2 on the Giants' 1958 draft list, is rapidly justifying his early selection. Rushed into action at right tackle on the offensive line, he has been more than pulling his 260-pound weight. Minnesota, which has sent a string of fine tackles to the Giants, was Frank's school.



Em Tunnell

After ten years of hell-for-leather defensive play, **Emlen Tunnell (45)** has retired from the regular Giant lineup. Over the years, there have been few more exciting defensemen than this blazing competitor from Iowa. Em set all manner of records and gained the fantastic total of 4,653 yards on punt, kick-off and interception returns.



Bob Schnelker

Bob Schnelker (85) has been a fixture at end for the Giants ever since they acquired him in a 1954 trade with the Eagles. The big blond from Bowling Green is a fast, powerful, sure-fingered pass-catcher, who is at his best under pressure. Going into this season he had grabbed 84 Giant passes, for 1448 yards and 16 TDs.

AUTOGRAPH COLLECTORS: *Giant Album* is a weekly feature

PLEASE USE ENTRANCE RAMP NEAREST YOUR SEAT

Guess which drink is better for you?

Fizzless highball



1. Big feature, easy to make. Turn the tap, fill the glass. No longer socially acceptable, lacking in good taste.



2. What happened to the flavor of the liquor? A lifeless, bland drink.



3. Flat'er than a pancake! Wishy-washy... Your very best bet... start afresh.



4. Sparkling mixers save you money and trouble. Every drink tastes great... better for you too.

Sparkling highball



1. Big feature... delectable taste. Costs more than tap water... but worth 5 times as much... Why?



2. Makes a lively drink every time. Makes any liquor taste terrific!



3. The drink comes alive with flavor. Money saving... You bet! Why?



4. No wasted drinks... no disappointed drinkers. You're traveling first class with Canada Dry Mixers.

Research says: "Highballs with sparkling mixers are better for you"

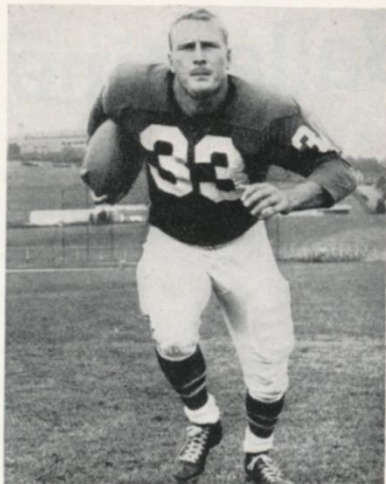
Here's why—It's the lively bubbles!

- 1.** They speed the liquid through your system 80% faster than plain water.
- 2.** They aid your digestion.
- 3.** They curb unpleasant aftereffects.

Only Canada Dry Mixers have exclusive "Pin-Point Carbonation"—livelier, longer-lasting bubbles. Also superior flavor, from secret formulas, improve the taste of any liquor.



Eagles Here Next Sunday



BILL BARNES

The Giants have a little job of score-settling to do next Sunday. That's when they play their return game with the Eagles, who were inhospitable enough to defeat them, 27-24, in Philadelphia.

Coached this year by Buck Shaw, one of pro football's old masters, and quarterbacked by Norm Van Brocklin, one of the National League's top passers for a decade, the Eagles are a more formidable force than they have been for some time.

They have perked up particu-



NORM VAN BROCKLIN

larly on attack. The addition of Van Brocklin to those strong young runners, Bill Barnes and Clarence Peaks, has given them a ground-air balance that commands high respect.

The 1958 Eagles also have considerably more depth than in the past. Sonny Jurgensen, another capable quarterback, supports Van Brocklin. Walt Kowalczyk, Michigan State's 1957 All-American, and Billy Wells, formerly with the Steelers and Redskins, also are explosive runners.

Pete Retzlaff, previously a defensive specialist, has blossomed out as a crack pass-receiver as flanker back, a position he shares



CLARENCE PEAKS

with elusive Tommy McDonald, Bobby Walston and Andy Nacrelli, the old Fordham star (remember when Fordham had a football team), are other favorite targets of the sharpshooting Van Brocklin.

The Giant defense will have to be sharp to stand off this array of talent and the presence of such stalwarts as Tom Scott on the Eagle defensive platoon also will put heavy pressure on the Giant Attack. It all adds up to another rousing pro football show at the Stadium.

Coming Giant Attractions at Stadium

GAME

5

NOV. 30

**PHILADELPHIA
EAGLES**

with

*Norm Van Brocklin
Clarence Peaks
Bill Barnes
Billy Wells
Bobby Walston*

**TICKET
PRICES:**

\$5.00

**BOX
SEATS**

\$4.00

**RESERVED
SEATS**

Here's Where to Buy Tickets in Person

YANKEE STADIUM

161st St. and River Ave.
Bronx, N. Y.
Mon.-Sat. 9-5 P.M.

YANKEE TICKET OFFICE

North Mezzanine
Grand Central Station
Mon.-Fri., 10-6 P.M.; Sat., 10-4

OR

DAVEGA STORES

Jamaica—163-24 Jamaica Avenue
Hempstead—45 Main Street

Hackensack—325 Main Street
White Plains—175 Main Street

Newark—110 Market Street

OTHER OUTLETS

ANDY ROBUSTELLI'S SPORTS SHOPS
in Stamford and Cos Cob, Conn.

GAME

6

DEC. 14

**CLEVELAND
BROWNS**

*with Jimmy Brown
Bobby Mitchell
Milt Plum
Ray Renfro
Lou Groza*

**ADDRESS ALL
MAIL ORDERS TO:**

**TICKET MANAGER
NEW YORK FOOTBALL GIANTS**
10 Columbus Circle
New York 19, N. Y.

(Add 50c for mailing and handling)

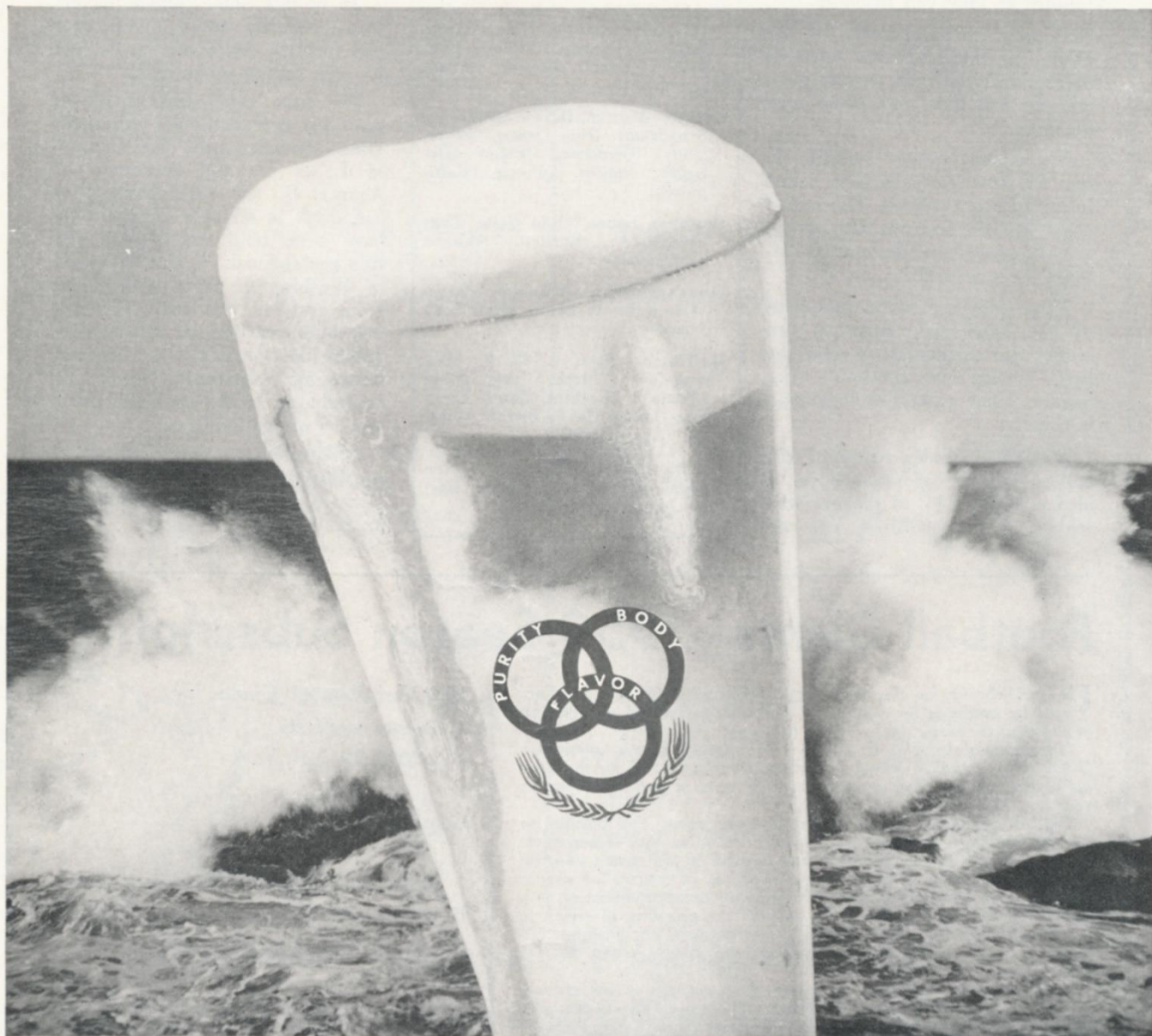
Make check or money order payable: NEW YORK FOOTBALL GIANTS, INC.

Tickets Now on Sale at Advance Sale Windows in Main Lobby



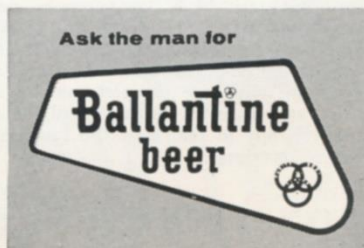
Hey, getcha cold beer

Hey getcha **Ballantine!**



® Is a Reg. T. M. of P. Ballantine & Sons, Newark, N. J.

the 'crisp'
refresher



Now...largest-selling beer in the East!



Jottings on the Giants

TODAY'S between-halves entertainment will be provided by the Burlington (Vermont) High School Band. The Giants had an opportunity to observe this crack marching unit in action when they used to train at St. Michael's College in Burlington. They were impressed with what they saw. So will you be, they think. Give these talented youngsters from the Green Mountains a warm reception.

Alex Webster and Dick Modzelewski will step to front and center today to receive watches as the offensive and defensive heroes, respectively, of the game with the Colts two weeks ago. The Longines-Wittennauer Watch Company will present these awards at each Giant home game.... Listen in on "Giant Radio Huddle" on CBS each Thursday night at 10 P.M.

More than 500 friends and followers from East Brunswick, N. J.,

will give Alex Webster a "day" at the Stadium next Sunday, in conjunction with the game against the Philadelphia Eagles.... Next Sunday qualifies as the social highlight of the Giant season. Also scheduled is the Section Five Club dinner at the Hotel Concourse Plaza after the game. Tickets may

be obtained at Section Five Club headquarters, Room 229, Hotel Concourse Plaza. Coach Jim Lee Howell and all the Giants will attend.

A number of the Giants plan to stay in New York the year round and will be available for post-season employment. Anyone who's interested in hustling, forceful sales or executive talent will do well to look into the possibility of hiring a Giant. Direct inquiries to the Giant office, 10 Columbus Circle, New York 19, N. Y. The phone number is JU 2-7272.

Roy Campanella and Monty Irvin head the committee for "Emlen Tunnell Day," which will be celebrated on Dec. 14, when the Giants play the Browns. Friends and followers of the veteran Giant defensive star are invited to send contributions to Tunnell Day Headquarters, Room 228, 60 East Forty-second Street.

CAREER AHEAD...

In The Air

On The Sea

Under The Sea

Career training in over 60 major fields in the new electronic

NAVY



HOTEL MANHATTAN HEADQUARTERS FOR PROFESSIONAL TEAMS IN NEW YORK CITY

New York's newest... Hotel Manhattan offers 1400 air-conditioned guest rooms, each with television and radio. Known as the "Home of Champions", this magnificent skyscraper hotel is ideally located in the heart of Times Square. Meet your friends at the Manhattan Bar or the new Playbill Room open daily for luncheon, dinner and supper.

Express Subway Trains Speed You to
Yankee Stadium from the Private
Subway Entrance of Hotel Manhattan

FRANK W. KRIDEL

Executive Vice President and General Manager



HOTEL

Manhattan

44TH TO 45TH STREETS
AT EIGHTH AVENUE • JUDSON 2-0300



I'VE ALWAYS TOLD
YOU, DOBERMAN, THE
BEST TOBACCO MAKES
THE BEST SMOKE!

BUT SARGE,
THAT WAS
MY LAST CAMEL
YA TOOK!

Have a real cigarette -
CAMEL



CAMELS taste so rich and smoke so mild
they outsell every other brand today!

Watch Phil Silvers as Sgt. Bilko (with Pvt. Doberman) on "The Phil Silvers Show" CBS-TV

Giant Album



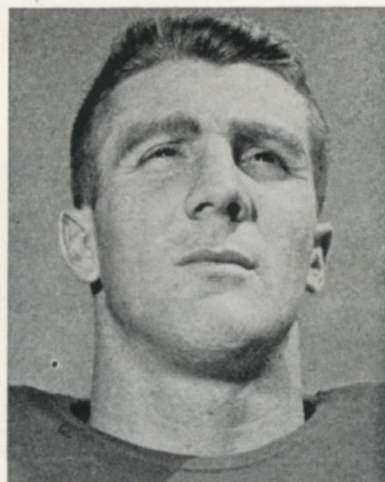
Jim Patton

In four seasons as a Giant, **Jim Patton (20)** has quietly but emphatically attained star stature. Only 180 pounds but quick as a cat on his feet and a never-miss tackler, the Ole Miss speed-boy now rates as the stiffest spoke in the Giant defensive umbrella. Well-briefed enemy passers take pains to avoid attacking the right safety sector he so ably patrols.



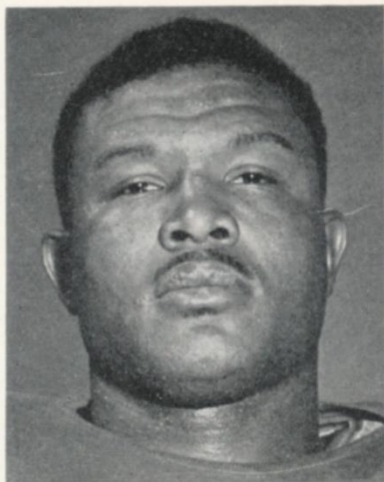
Carl Karilivacz

Carl Karilivacz (21), a Glen Cove, L. I., native who attended Syracuse University, put in five seasons of stellar service with the Detroit Lions before he was acquired by the Giants in a 1958 pre-season trade. Fast, alert and knowing, he moved right into the defensive line-up at right halfback. Played end on Syracuse's Orange Bowl team of 1953.



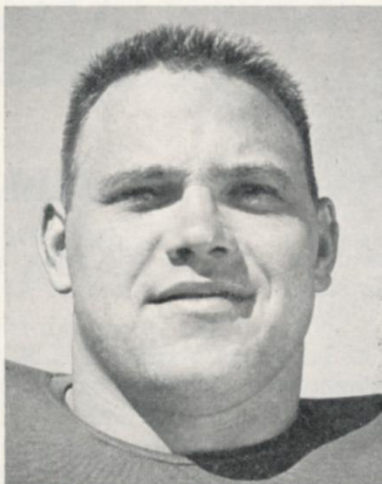
Alex Webster

Alex Webster (29), cast off by the Redskins in 1953, came to the Giants in 1955 after two brilliant seasons in Canada. The big North Carolina State graduate has been a great runner for the Giants. Through 1957, he had rushed for 1806 yards, caught 73 passes for 796 more yards and scored 22 TDs.



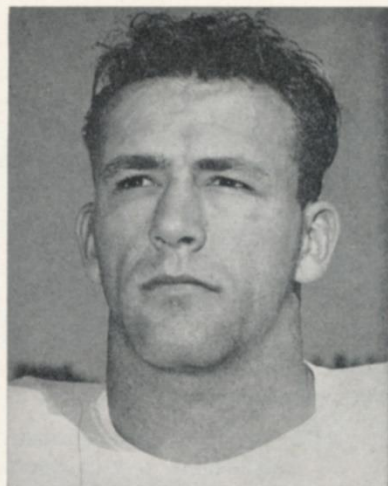
Mel Triplett

Mel Triplett (33), a No. 5 draft choice in 1955, has supplied the Giants with a wallop at fullback that long had been lacking. He's a riproaring runner and a lethal blocker who is particularly effective at protecting the passer. A graduate of the University of Toledo, where he was football captain in 1954.



Dick Modzelewski

Dick Modzelewski (77), joined the Giants in 1956 after dividing three previous pro seasons between Washington and Pittsburgh. A rugged, willing 260-pounder, he's a fixture on the defensive rush line. "Little Mo," a product of Maryland, represents an ideal combination of the immovable object and irresistible force.



Cliff Livingston

Cliff Livingston (89) doesn't often appear in the starting line-up but the rugged U. C. L. A. graduate has made himself valuable to the Giants in many ways over the past five years. He's a dependably spare linebacker and end and a kick-blocking terror on the special-purpose platoons. His brother, Howie, preceded him on the Giants.

AUTOGRAPH COLLECTORS: *Giant Album* is a weekly feature

PLEASE USE ENTRANCE RAMP NEAREST YOUR SEAT



Buy Your Dream Car This Year—under the

GOLD MEDAL

AUTO PLAN

How much would a new car mean to you and your family—in happiness, freedom and convenience?

This year, join the thousands of knowing New Yorkers who will choose Chemical to help them get behind the wheel of a new or late-model used car at a saving.

Chemical's Gold Medal Auto Plan provides you with the money you need to buy your dream car—at low cost and on easy-to-handle terms. You pay only \$3.75 a year per \$100, deducted in advance. Complete

life insurance protection, if you desire it, is available.

One of our friendly and experienced representatives will be glad to work out the Gold Medal Auto Plan to fit your requirements and your budget. He'll handle your application quickly, confidentially—and without red tape. The money is usually available the next day.

Visit any nearby Chemical Corn Exchange Bank office soon and see how easily Chemical's Gold Medal Auto Plan can solve your car buying problems.

Choose the Plan that fits your Budget

Amount of Loan	For 12 Months You Repay	For 24 Months You Repay
\$ 720	\$ 60	\$ 30
1440	120	60
2880	240	120
4920	410	205

Weeknights watch "7 O'CLOCK WORLD NEWS"
with Kevin Kennedy on WPIX-Channel 11



Member Federal Deposit Insurance Corporation

THE BANK THAT'S NEAR YOU IN GREATER NEW YORK

1958 Giant Statistics

EIGHT-GAME TEAM RECORD

GIANTS	OPPONENTS
68 First downs, rushing	57
52 First downs, passing	62
11 First downs, penalty	5
131 Total first downs	124
2212 Total yards gained	2497
1208 Net yards gained, rushing	942
1004 Net yards gained, passing	1555
305 Number of rushing attempts	273
167 Number of passing attempts	218
76 Passes completed	102
14 Passes intercepted by	9
155 Yards on interceptions	99
47 Number of punts	35
44.3 Punting average	41.1
27 Punts returned	36
4.0 Punt return average	7.1
26 Kick-off returns	25
19.7 Kick-off return average	21.9
29 Number of penalties	26
249 Yards lost, penalties	284
17 Number of fumbles	21
10 Opponents' fumbles recovered	7

INDIVIDUAL RECORDS

PASSING

	Att.	Comp.	Int.	Yds.	L.G.	TDs.	Pct.
Conerly	133	66	8	886	41	7	.496
Heinrich	25	7	0	101	41	1	.280
Gifford	5	1	0	63	63	0	.200
*Dublinsky	3	1	0	14	14	0	.333
Chandler	1	1	0	27	27	0	1.000

SCORING

	TD-R	TD-P	TDs.	PAT.	FG.	Pts.
Gifford	6	1	7	0	0	42
Summerall	0	0	0	19-21	5-11	34
Webster	3	2	5	0	0	30
Schnelker	0	2	2	0	0	12
Rote	0	2	2	0	0	12
King	1	0	1	0	0	6
Triplett	1	0	1	0	0	6
MacAfee	0	1	1	0	0	6
Heinrich	1	1	1	0	0	6
Karilivacz	1	0	1	0	0	6

RUSHING

	Att.	Yds.	L.G.	Avg.
Triplett	81	358	24	4.4
Webster	86	346	54	4.0
Gifford	61	291	33	4.8
King	51	175	18	3.4
Maynard	9	17	14	1.9
Chandler	1	15	15	15.0
Lott	2	11	6	5.5
Heinrich	5	—4	6	0.0
Conerly	9	—9	11	0.0

RECEIVING

	No.	Yds.	TDs.	L.G.
Gifford	20	264	1	37
Webster	19	215	2	37
Schnelker	14	305	2	63
Rote	6	88	2	25
Maynard	5	84	0	31
King	5	56	0	18
MacAfee	4	42	1	22
Triplett	2	10	0	7
Mischak	1	27	0	27

PUNT RETURNS

	No.	Yds.	L.G.
Maynard	13	61	18
Crow	10	46	34
Tunnell	4	0	0

INTERCEPTIONS

	No.	Yds.	L.G.
Patton	7	69	39
Crow	3	40	34
Huff	2	23	15
Karilivacz	1	15	15
Tunnell	1	8	8

KICK-OFF RETURNS

	No.	Yds.	L.G.
Maynard	8	210	44
King	9	184	31
Lott	5	78	24
Triplett	3	39	15
Brown	1	6	0

PUNTING

	No.	Avg.	Lgst.
Chandler	47	44.3	67

*No longer with team.

"He tried to take my
Drake's
COOKIES"



Redskins on Offense

KICK-C
2:05 P

R. H. PODOLEY (24)	F. B. BOSSLER (31)	Q. B. LE BARON (14)	L. H. SUTTON (30)
R. E. WALTON (81)	R. T. LEMEK (70)	R. G. STANFEL (60)	C. SCHRADER (51)
		L. G. STEPHENS (67)	L. T. BOLL (62)
			L. E. CARSON (82)

Giants on Defense

L. E. KATCAVAGE (75)	L. T. MODZELEWSKI (77)	M. L. B. HUFF (70)	R. T. GRIER (76)	R. E. ROBUSTELLI (81)
L. W. HUGHES (48)	L. L. B. SVOBODA (30)	L. S. CROW (41)	R. S. PATTON (20)	R. L. B. SVARE (84)
				R. W. KARILIVACZ (21)

WASHINGTON REDSKINS ROSTER

No.	Player	Position	Weight	Height	Age	College	Yrs. Pro
0	Olszewski, John	FB	202	6:00	27	California	6
3	Guglielmi, Ralph	QB	195	6:01	25	Notre Dame	2
10	Bukich, Rudy	QB	200	6:01	26	Southern California	4
14	LeBaron, Eddie	QB	165	5:07	28	College of Pacific	6
20	Nix, Doyle	HB	188	6:01	25	Southern Methodist	2
24	Podoley, Jim	HB	200	6:02	25	Central Michigan	2
25	Lynch, Dick	HB	200	6:01	22	Notre Dame	1
27	Walters, Les	E-HB	185	6:00	21	Penn State	1
28	Scudero, Joe	HB	174	5:10	28	San Francisco	5
29	Zagers, Bert	HB	185	5:11	25	Michigan State	3
30	Sutton, Ed	HB	207	6:01	23	North Carolina	2
31	Bosseler, Don	FB	207	6:01	22	Miami (Fla.)	2
36	Drazenovich, Chuck	FB	229	6:01	31	Penn State	9
41	Watson, Sid	HB	194	5:10	26	Northeastern	4
42	Anderson, Bill	E-HB	195	6:03	22	Tennessee	1
45	Felton, Ralph	FB	210	5:11	26	Maryland	5
47	James, Dick	HB	180	5:09	24	Oregon	3
49	Baker, Sam	FB	217	6:02	27	Oregon State	4
51	Schrader, Jim	C	236	6:02 1/2	26	Notre Dame	4
52	Allen, Johnny	C	227	6:02 1/2	25	Purdue	4
54	Fulcher, Bill	G	200	6:00	24	Georgia Tech	3
56	Brueckman, Charles	C	220	6:02	22	Pittsburgh	1
60	Stanfel, Dick	G	230	6:03	31	San Francisco	7
62	Boll, Don	T	272	6:02 1/2	31	Nebraska	6
66	Voytek, Ed	G-T	240	6:02	23	Purdue	2
67	Stephens, Red	G	232	6:01	28	San Francisco	4
70	Lemek, Ray	T	237	6:01	24	Notre Dame	2
71	Renfro, Will	E-T	237	6:05	26	Memphis State	2
72	Weatherall, Jim	T	245	6:04	28	Oklahoma	4
73	Miller, John	T	250	6:05	24	Boston College	2
80	Brito, Gene	E	230	6:02	32	Loyola	7
81	Walton, Joe	E	205	5:11	22	Pittsburgh	2
82	Carson, John	E	200	6:02 1/2	28	Georgia	5
88	Ostrowski, Chet	E	235	6:02	28	Notre Dame	5
89	Dee, Bob	E	230	6:04	25	Holy Cross	2

GIANT SPEC

PAT and FG—Sum
Chandler ()
Punting—Chandler (34)
Kick-Offs—Summ
Chandler ()

OFFICIAL

Referee
George Rennix (52)

Umpire
Louis Palazzi (51),

Head Lines
Charles F. Ber

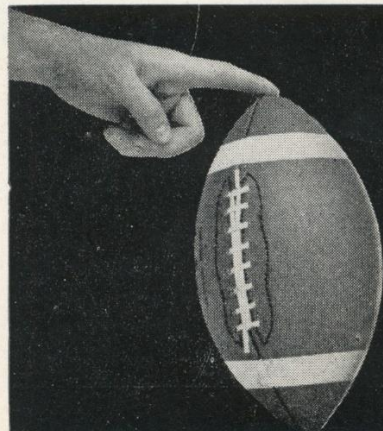
Back Jud
Cleo N. Diehl (37),

Field Jud
Don Looney (59)

REDSKIN SPEC

PAT and FG—Baker (4)
Punting—Baker (49),
Kick-Offs—Baker (49)

PLEASE USE ENTRANCE RAM



Here's to the winning point!
CLEAR HEADS AGREE

CK-OFF
05 P.M.

Giants on Offense

R. H. WEBSTER (29)	F. B. TRIPLETT (33)	Q. B. HEINRICH (11)	L. H. GIFFORD (16)
R. E. SCHNELKER (85)	R. T. YOUSO (72)	R. G. BARRY (68)	C. WIETecha (55)
L. G. MISCHAK (62)	L. T. BRACKETT (71)	L. E. ROTE (44)	

Redskins on Defense

L. E. BRITO (80)	L. T. WEATHERALL (72)	M. L. B. DRAZENOVICH (36)	R. T. RENfro (71)	R. E. OSTROWSKI (88)
L. W. NIX (20)	L. L. B. FULCHER (54)	L. S. SCUDERO (28)	R. S. JAMES (47)	R. W. LYNCH (25)

NEW YORK GIANTS ROSTER

No.	Player	Position	Weight	Height	Age	College	Yrs. Pro
11	Heinrich, Don	QB	180	6:00	27	Washington	5
13	Maynard, Don	HB	178	6:00	22	Texas Western	1
16	Gifford, Frank	HB	205	6:01	28	Southern California	7
20	Patton, Jim	HB	180	5:10	26	Mississippi	4
21	Karilivacz, Carl	HB	190	6:01	27	Syracuse	6
22	Lott, Billy	HB	195	6:00	23	Mississippi	1
24	King, Phil	FB	225	6:04	22	Vanderbilt	1
29	Webster, Alex	HB	210	6:03	27	North Carolina State	4
30	Svoboda, Bill	LB	215	6:00	29	Tulane	9
33	Triplett, Mel	FB	215	6:01	26	Toledo	4
34	Chandler, Don	HB	205	6:02	23	Florida	3
41	Crow, Lindon	HB	200	6:01	25	Southern California	4
42	Conerly, Charley	QB	185	6:01	37	Mississippi	11
44	Rote, Kyle	E	205	6:00	30	Southern Methodist	8
45	Tunnell, Emlen	HB	200	6:01	33	Iowa	11
48	Hughes, Ed	HB	180	6:01	28	Tulsa	4
55	Wietecha, Ray	C	225	6:01	29	Northwestern	6
60	Guy, Melwood	G-T	248	6:03	23	Duke	1
61	Jelacic, Jon	G-E	230	6:03	22	Minnesota	1
62	Mischak, Bob	G	230	6:00	25	Army	1
66	Stroud, Jack	G	235	6:01	29	Tennessee	6
68	Barry, Al	G	230	6:02	26	Southern California	3
70	Huff, Sam	G	230	6:01	23	West Virginia	3
71	Brackett, M. L.	T	250	6:05	25	Auburn	3
72	Youso, Frank	T	260	6:04	22	Minnesota	1
75	Katcavage, Jim	T	230	6:03	23	Dayton	3
76	Grier, Roosevelt	T	270	6:05	25	Penn State	3
77	Modzelewski, Dick	T	260	6:00	27	Maryland	6
79	Brown, Roosevelt	T	245	6:03	25	Morgan State	6
80	MacAfee, Ken	E	215	6:02	29	Alabama	5
81	Robustelli, Andy	E	230	6:01	30	Arnold	8
84	Svare, Harland	LB	215	6:00	27	Washington State	6
85	Schnelker, Bob	E	215	6:04	28	Bowling Green	6
88	Summerall, Pat	E	235	6:04	28	Arkansas	7
89	Livingston, Cliff	LB	215	6:03	28	UCLA	5

RAMP NEAREST YOUR SEAT

Calvert

IS BETTER
RESERVE

IT'S THE WHISKEY
WITH THE MAN-SIZED FLAVOR!

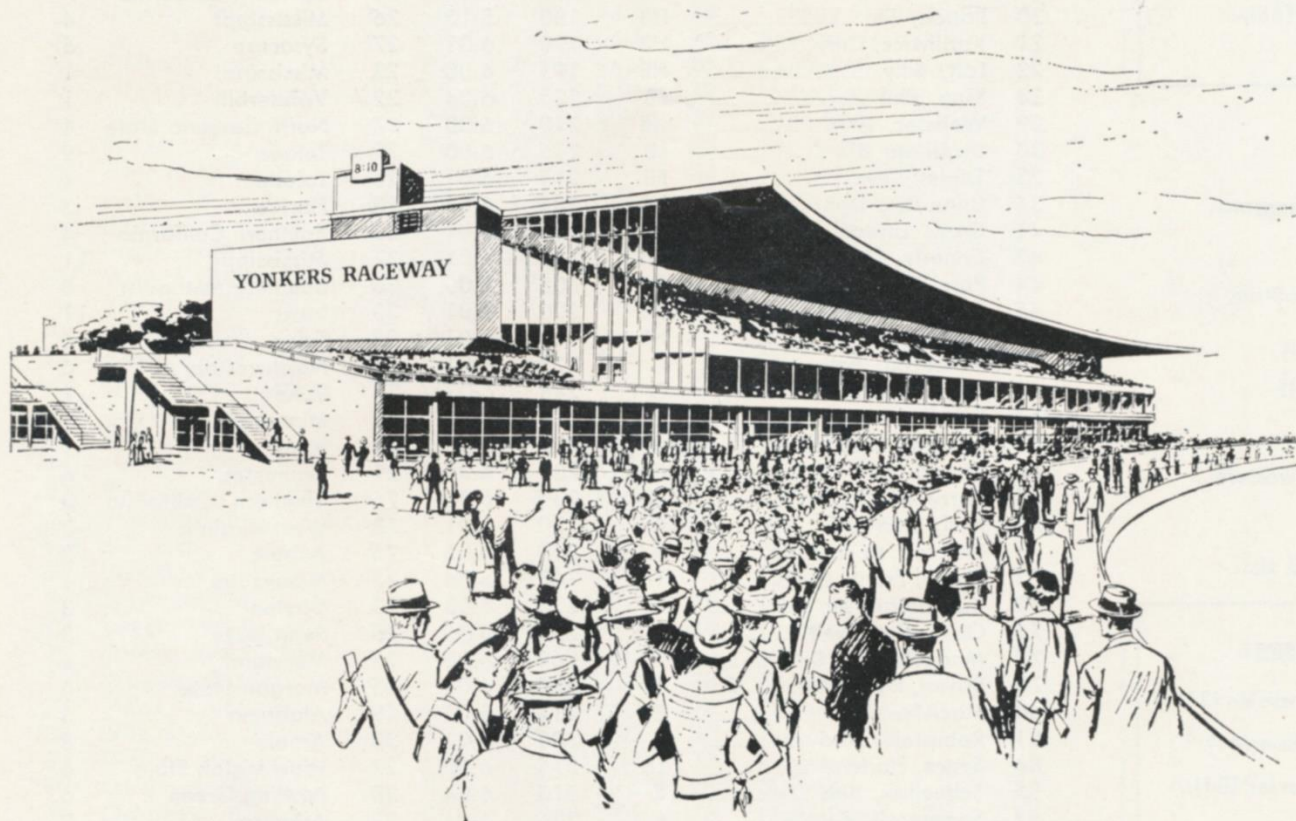
©1958 CALVERT DIST. CO., N.Y.C. • 86 PROOF • 65% GRAIN NEUTRAL SPIRITS • BLENDED WHISKEY



THE GREATER

YONKERS

RACEWAY



See the world's most beautiful clubhouse . . . comfortably weather-conditioned. See every thrilling second of all 9 races. Trackside dining in the fabulous Empire Terrace. Escalators and elevators to all clubhouse and grandstand levels. World's largest Parkadrome with expanded valet service and front door parking. See it all . . . action . . . excitement . . . THRILLS, every weekday night at YONKERS.

DAILY DOUBLE 8:15 FIRST RACE 8:25

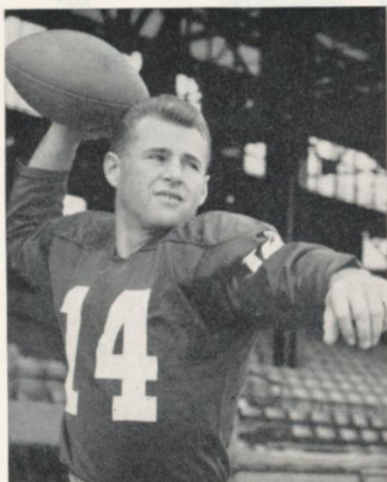
For Dining reservations, call Greenleaf 6-6430

General Admission \$1.95 tax incl.

Diners' Club Member

THE GIANT OF TROTTING

Looking Over the Redskins



EDDIE LE BARON

LIKE every National Football League team, the Redskins are capable of beating any opponent on any given day. Coach Joe Kuharich's current Washington team is particularly well-endowed with attacking weapons and, in the final analysis, it is attack that wins football games. No one yet has figured a way to win without scoring.

The Redskins' ability to score commands the highest respect. They are a versatile bunch, who can light up the scoreboard early and often by running, by passing and by place-kicking.

The littlest brave among the Redskins is the big chief of the Capitol tribe. The warrior in question, of course, is Eddie LeBaron. There's no more colorful quarterback in football than this amazingly deft, resourceful and nervy 5-foot 7-inch 165-pound graduate of the College of the Pacific.

No one since Frankie Albert performs greater wonders of prestidigitation than LeBaron and

Eddie backs up his shell-and-pea-game ball-handling with pin-point passing. For example, the little guy fired five touchdown passes against the Cardinals a couple of Sundays ago. Runner-up to Cleveland's Tommy O'Connell last year, he's making a strong run for the league passing title this season.

It helps LeBaron's passing that Washington has what it believes is the best set of running backs in the league. Ed Sutton, Don Bosseler and Jim Podoley, who comprise the regular trio, are young, swift 200-pounders who gobble up yardage in big chunks from the Kuharich version of the unbalanced line, "lonely end" T formation. They're all gifted pass-catchers, too, particularly the fleet Podoley, who has given the Giants a lot of trouble the last couple of years.

Other prime passing targets of the sharpshooting LeBaron are Johnny Carson and Joe Walton, an All-America end at Pittsburgh a few years back. Carson, very fast afoot, is what is described in the trade as a "long end." Walton is a wizard at getting open in tight quarters and specializes in diving catches.

Washington has good backfield depth. Ralph Guglielmi, of Notre Dame fame, is a capable understudy for LeBaron. Bert Zagers, Joe Scudero, Sid Watson and Dick



JOE KUCHARICH

James are experienced spare half-backs and a rookie from Tennessee named Bill Anderson, who doubles at halfback and end, also has shown to advantage. Then, the acquisition of hard-hitting Johnny Olszewski from the Cardinals has provided another inside threat.

Another important cog in the Redskin attack is Sam Baker. This big boomer from Oregon State booted 14 field goals in 23 attempts last year to tie Cleveland's Lou Groza for the league scoring title with 77 points. Baker is an outstanding punter, too.

Washington's sturdy offensive line features Dick Stanfel, recognized for years as one of pro football's best running guards. There are a couple of perennial all-leaguers on the defensive line, too. They are big Chuck Drazenovich, at middle backer, and rough, tough Gene Brito at left end.

Make no mistake about it, this is a good Redskin team. The Giants will have to be at their best to stand up against it.



PLEASE USE ENTRANCE RAMP NEAREST YOUR SEAT

Touchdown!



KING-SIZE
FILTER

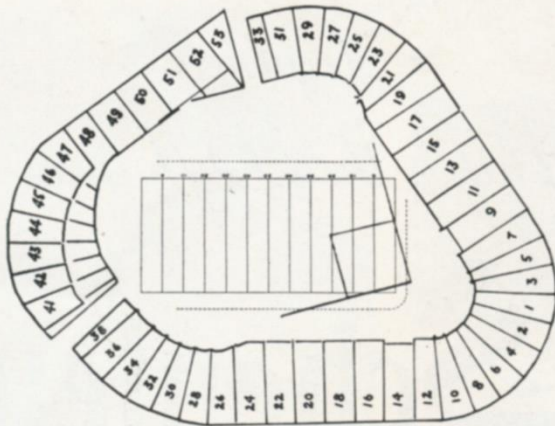
KOOL

the cigarette with the
SNOW FRESH FILTER

Blocked by hot cigarettes? Get into the clear—try a pack of refreshing Filter KOOL!

KOOLS taste *clean* and *fresh* and *light* . . . the *Snow Fresh* Filter makes the menthol *right*! So put yourself on the winning team . . . the KOOL team! For a cleaner, fresher taste all through the day . . . switch from "hots" to KOOLS!

Yankee Stadium Services & Facilities



LOST AND FOUND—Direct inquiries and reports to James K. Thomson, the Stadium Manager. Any attendant will direct you to his office.

REST ROOMS—**Men:** Gate 2, Press Gate, Stadium Club (lower, upper), Gate 6; Lower Sections 34, 8, 6, 15, 21, 27; Mezzanine Sections 27, 15, 5, 18, 28; Upper Sections 34, 20, 6, 15, 21; Bleacher Sections 43, 47, 52. **Women:** Gate 2, Gate 4, Stadium Club (lower, upper), Gate 6; Lower Sections 28, 20, 5, 15, 27; Mezzanine Sections 21, 15, 6, 18, 34; Upper Sections 28, 20, 5, 15, 29; Bleacher Sections 47, 52.

PUBLIC TELEPHONES—Gate 2, Gate 4, Press Gate, Stadium Club (lower, upper), Gate 6, Lower Sections 24, 14, 12, 11, 17, 27; Mezzanine Sections 27, 17, 7, 8, 22; South side 157th St., Ruppert Pl. to Cromwell Ave. Upper Sections 34, 20, 12, 8, 9, 19, 27; Bleacher Sections 41, 49, 51.

PARKING AREAS

YANKEE LOTS

South side 157th St., Ruppert Pl. to Cromwell Ave.
Between Cromwell and River Aves., on 153rd St.
163rd to 164th Sts., between River and Gerard Aves.
151st St. and River Ave., opposite Bronx County jail.

PRIVATELY-OWNED LOTS

West side Ruppert Pl., between 157th and 158th Sts.
West side River Ave., between 151st and 153rd Sts.
West side River Ave. and 157th St.
East side River Ave., North of 153rd St.
East side River Ave., North of 151st St.
East side River Ave., 164th to 165th Sts.
East side River Ave., South of 162nd St.
Farmer's Square—Cromwell Ave. Roadway, and
West of 151st St. Viaduct, opposite Bronx County Jail.

GARAGES

Cromwell Ave. and 157th St.
East side of River Ave., South side of 158th St.
East side of River Ave., North side of 157th St.
East side of River Ave., South side of 157th St.
North side of 158th St., between River and Gerard Aves.
Also, the Polo Grounds lot again will be in service for all Giant games at the Stadium.

SOUVENIR PRICE LIST

Rooter Badge (All Teams).....	.25	Giants Bracelet.....	1.40
Picture Set (12 Players).....	.35	Player Doll (small).....	.75
Pennant (All Teams).....	.50	Doll (large).....	1.50
Giants Pen and Pencil Set.....	.75	Stadium Cap (ear laps).....	2.00
Giants Player Trophy.....	1.00	Football (small).....	1.50
Plastic Cushion.....	1.00	Football (large).....	3.00

Souvenir Stands located at Gates 2, 4, 6; Lower Sections 2, 18; Mezzanine Sections 20, 23; Upper Sections 18, 21; Bleacher Sections 43, 50.

These items also are available by mail from Harry M. Stevens, Inc., Souvenir Dept., Yankee Stadium, Bronx 51, N. Y.

PARK & TILFORD



When you measure
whiskey value—it's
a good rule to buy
REPUTATION



A reputation is hard to build, easy to destroy. Because we value ours, we market only the finest whiskey your money can buy.

\$4.33
4/5 QUART

\$5.34
QUART

\$2.72
PINT

BLENDED WHISKEY. 65% GRAIN NEUTRAL SPIRITS. 86 PROOF. PARK & TILFORD, N. Y.

WITH MEN WHO KNOW THE SCORE...

*Elegance
Makes the Difference*

... enjoy **Schenley**
RESERVE

The Whisky of Elegance



Redskin



JIM PODOLEY



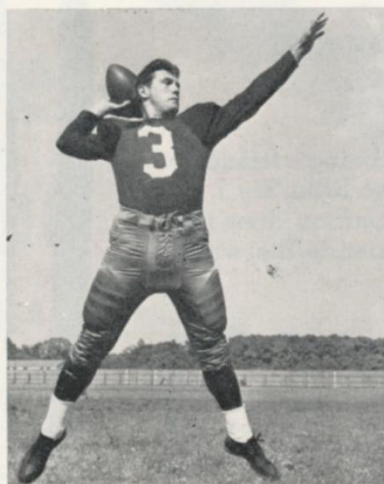
GENE BRITO



DICK STANFEL



JOHN OLSZEWSKI



RALPH GUGLIELMI

Stars



DON BOSSELER



ED SUTTON

PLEASE USE ENTRANCE RAMP NEAREST YOUR SEAT

J. W.
DANT
 WORLD'S
 LARGEST SELLING
 BONDED
 BOURBON



I'm Newt Kook, President of the Dant Distillery. Down in Kentucky we have a saying:

"The only way to have a friend is to be one..."

And I don't know a better way of being a friend to so many as to give them so much for so little. My J. W. Dant genuine Kentucky sour mash bourbon does just that. No wonder it has made more friends the world over than any other Bond!

GIANT LEADERS

Rushing	Gifford: 109—463 yds.
Passing	Conerly: 78 of 155
Receiving	Gifford: 25—295 yds.
Scoring	Gifford: 60 pts.
Punting	Chandler: 44.1-yd. avg.
Punt Returns	Maynard: 20—116 yds.
Kick-Off Returns	Maynard: 10—261 yds.
Interceptions	Patton: 11—183 yds.



Giants vs. Redskins

SERIES RECORD

	W.	L.	T.	Pts.	Opp. Pts.
Giants	27	16	1	863	727
Redskins	16	27	1	727	863

Over the years, few National Football League rivalries have stirred up as much furore as that between the Giants and the Redskins.

Ever since that memorable December day in 1937, when 10,000 war-whooping, feather-wearing Washington fans jarred Times Square from its Sunday morning somnolence by parading up Broadway behind a blaring band, there has been a special quality of excitement attached to Giant-Redskin games.

Led by the incomparable Sammy Baugh and Cliff Battles, the Redskins won that 1937 game, 49-14, repeating an earlier 13-3 victory in Washington.

Since, the Giants have had the upper hand. But as often as not, the games with the Redskins have been spine-tingling, see-saw, down-to-the-wire thrillers.

The Giants' 21-14 victory in Washington on Oct. 12 was in that tradition and more of the same may be expected today.

GIANTS vs. ALL OPPONENTS

Opponent	W.	L.	T.	Pts.	Opp. Pts.
Baltimore	2	1	0	55	48
Chicago Bears	13	20	2	404	547
Chicago Cards	26	8	0	785	537
Cleveland Browns	6	11	1	257	346
Detroit Lions	4	8	1	158	268
Green Bay Packers	14	14	2	405	393
Los Angeles Rams	0	5	0	91	155
Philadelphia Eagles	31	17	1	909	724
Pittsburgh Steelers	26	18	2	832	642
San Francisco 49ers	2	1	0	78	62
Washington Redskins	27	16	1	863	727

The complete series record:

1937—Wash. 13, Giants 3	1948—Wash. 41, Giants 10
Wash. 49, Giants 14	Wash. 28, Giants 21
1938—Giants 10, Wash. 7	1949—Giants 45, Wash. 35
Giants 36, Wash. 0	Giants 23, Wash. 7
1939—Wash. 0, Giants 0	1950—Giants 21, Wash. 17
Giants 9, Wash. 7	Giants 24, Wash. 21
1940—Wash. 21, Giants 7	1951—Giants 35, Wash. 14
Giants 21, Wash. 7	Giants 28, Wash. 14
1941—Giants 17, Wash. 10	1952—Giants 14, Wash. 10
Giants 20, Wash. 13	Wash. 27, Giants 17
1942—Giants 14, Wash. 7	1953—Wash. 13, Giants 9
Wash. 14, Giants 7	Wash. 24, Giants 21
1943—Giants 14, Wash. 10	1954—Giants 51, Wash. 21
Giants 31, Wash. 7	Giants 24, Wash. 7
*Wash. 28, Giants 0	1955—Giants 35, Wash. 7
1944—Giants 16, Wash. 13	Giants 27, Wash. 20
Giants 31, Wash. 0	1956—Wash. 33, Giants 7
1945—Wash. 24, Giants 14	Giants 28, Wash. 14
Wash. 17, Giants 0	1957—Giants 24, Wash. 20
1946—Wash. 24, Giants 14	Wash. 31, Giants 14
Giants 31, Wash. 0	1958—Giants 21, Wash. 14
1947—Wash. 28, Giants 20	
Giants 35, Wash. 10	

*Divisional playoff.

Enjoy 'em at the Game and at Home

Here at Yankee Stadium, reach for MRS. WAGNER'S delicious individual pies. At home, enjoy the fresh-baked goodness of MRS. WAGNER'S family-size pies. Both ways, you're in for real enjoyment.



Why bake when you can buy

Mrs. Wagner's Pies



"THESE FRANKFURTS ARE HICKORY SMOKED!"

Enjoy 'em at home, the circus, the football field, *everywhere!*
Take your choice—regular or all-beef franks—both are *all meat!* Both deliciously hickory-smoked! Available in jars and cellophane, too. By famous . . .

Stahl-Meyer



FAMOUS FERRIS HICKORY SMOKED CANNED HAM AND FERRIS BACON ARE TWO MORE FINE PRODUCTS MANUFACTURED AND KITCHEN TESTED BY STAHL-MEYER INC.

NATIONAL LEAGUE OFFICIALS' SIGNALS



Offside



Crawling, Pushing,
Helping Runner



Illegal Motion



Illegal Pass



Unsportsmanlike
Conduct



Pass Interference



Holding, Illegal
Use of Hands



Personal Foul
(indication of
offense follows)



Delay of Game,
Excess Time-Out



Touchdown, Field
Goal, Extra Point



Safety



Loss of Down



Penalty Declined,
Incomplete Pass,
Missed Goal



First Down



Dead Ball



No Time-Out or
Time In with Whistle



Time-Out



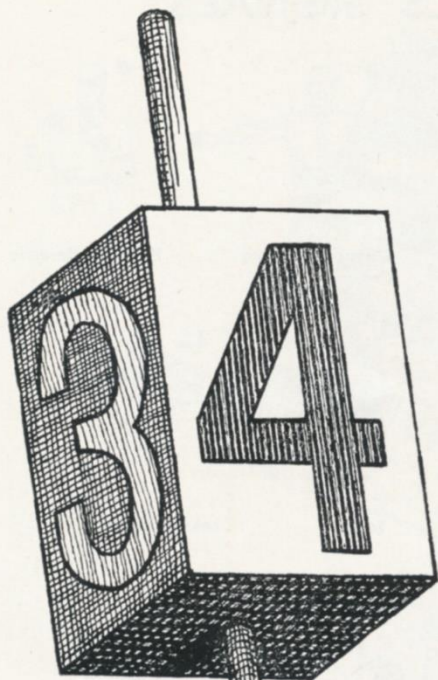
BY APPOINTMENT
TO THOSE
WHO THOUGHTFULLY
JUDGE WHISKEY
BY EXPERIENCE

MELROSE

THE VINTAGE WHISKEY

Vintage Blended Whiskey, 90 Proof, 60% Grain Neutral Spirits. Melrose Distillers Co., N. Y.





Before they call
that 4th down kick
Stand up, brother . . .

Sing out for Knick



Knickerbocker

NEW YORK'S FAMOUS BEER

Jacob Ruppert, N. Y. C.

Giant Blackboard: A Capitol Play

As a change of pace, today's play diagram involves the opponents, instead of the Giants. We're doing this for two reasons: 1) the Redskin attack is somewhat different, i.e., they are the only National League team whose basic formation involves an unbalanced line; 2) the Washington offense is a progenitor of sorts of the Army "lonely end" attack that has created such high excitement among the varsity set.

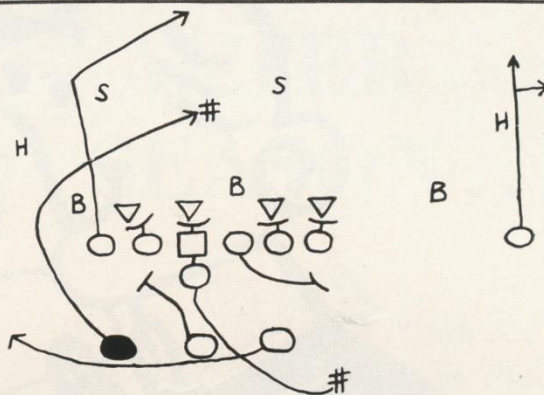
Except that their split end does enter the huddle, the Redskins have used for several seasons the same basic deployment that Army has adopted.

They run from an unbalanced line (four men on one side of center), with the long side end set out 15 to 18 yards. The backs either stay in regulation T alignment or a halfback may be flanked, most often in a wing or slot position on the same side as the open end.

This formation generates a lot of power to the strong side and also imposes on the defense the burden of added vigilance against counter-thrusts to the weak side, which necessarily must be left lightly guarded.

The play diagrammed is one that Eddie LeBaron, Washington's gifted little quarterback, works exceptionally well. It involves a pass off a feinted sweep to the short side.

On taking the snap, LeBaron executes a reverse pivot to the left and rolls out to the right, faking hand-offs to the fullback and right halfback as he goes, with the right guard as a blocking convoy.



The left halfback moves initially as though to act as the lead blocker on a running play, then cuts sharply right to take a pass over the middle. Meanwhile the left end goes downfield and also breaks in. The isolated end may go straight downfield or run a "square-out" course. They are alternate receivers.

It's a tough pass pattern to stop. The defensive right halfback, right linebacker and middle linebacker must initially react to the faked runs.

That leaves it up to the safety men to cover the left end and left halfback man-to-man. With a good passer throwing to fast receivers who know where they are going, there's a lot of pressure on those isolated deep defenders.



Si
Green

NBA DOUBLEHEADER
TUESDAY NIGHT

KNICKS vs
CINCINNATI ROYALS

with Si Green and Jack Twyman

PHILADELPHIA vs ST. LOUIS

1st Game 7 PM

TICKETS NOW AT BOX OFFICE
\$1.50, \$2.00, \$2.50, \$3.00, \$4.50 tax incl.

Home and Away Games on Radio WINS—1010 on your Dial
Brought to You by Budweiser

MADISON SQ. GARDEN



"There's no substitute
for that
TIP-TOP
feeling"

Tip-Top Bread and Cakes...just a teeny bit better!

"Tip-Top" Reg. U. S. Pat. Off., Ward Baking Company

Above all...it's light!



Please be patient if you don't find Long John the first try! Shipments of this wonderfully light whisky are barely trickling over from Scotland.

86 PROOF • BLENDED SCOTCH WHISKY • DREYFUS, ASHBY CO., INC. • SOLE U. S. IMPORTERS, N. Y.

National League Champions

In the National Football League's first twelve seasons, the champion was the team with the highest won-and-lost percentage. In 1933, the league was split into Eastern and Western divisions. Since then, the divisional champions have met after the regular season ends for pro football's "world championship."

LEAGUE LEADERS—1921-32

		W.	L.	T.	Pct.
1921	Chicago Staleys (Bears)	10	1	1	.909
1922	Canton Bulldogs	10	0	2	1.000
1923	Canton Bulldogs	11	0	1	1.000
1924	Cleveland Indians	7	1	1	.875
1925	Chicago Cardinals	11	2	1	.846
1926	Frankford Yellow Jackets	14	1	1	.933
1927	New York Giants	11	1	1	.917
1928	Providence Steam Rollers	8	1	2	.889
1929	Green Bay Packers	12	0	1	1.000
1930	Green Bay Packers	10	3	1	.769
1931	Green Bay Packers	12	2	0	.857
1932	Chicago Bears	7	1	6	.875

PLAY-OFF RESULTS—1933-57

1933	(Dec. 17 at Chicago) Chicago Bears 23, New York 21.
1934	(Dec. 9 at New York) New York 30, Chicago Bears 13.
1935	(Dec. 15 at Detroit) Detroit 26, New York 7.
1936	(Dec. 13 at New York) Green Bay 21, Boston 6.
1937	(Dec. 12 at Chicago) Washington 28, Chicago Bears 21.
1938	(Dec. 11 at New York) New York 23, Green Bay 17.
1939	(Dec. 10 at Milwaukee) Green Bay 27, New York 0.
1940	(Dec. 8 at Washington) Chicago Bears 73, Washington 0.
1941	(Dec. 21 at Chicago) Chicago Bears 37, New York 9.
1942	(Dec. 13 at Washington) Washington 14, Chicago Bears 6.
1943	(Dec. 26 at Chicago) Chicago Bears 41, Washington 21.
1944	(Dec. 17 at New York) Green Bay 14, New York 7.
1945	(Dec. 16 at Cleveland) Cleveland 15, Washington 14.
1946	(Dec. 15 at New York) Chicago Bears 24, New York 14.
1947	(Dec. 28 at Chicago) Chicago Cardinals 28, Philadelphia 21.
1948	(Dec. 19 at Philadelphia) Philadelphia 7, Chicago Cardinals 0.
1949	(Dec. 18 at Los Angeles) Philadelphia 14, Los Angeles 0.
1950	(Dec. 24 at Cleveland) Cleveland 30, Los Angeles 28.
1951	(Dec. 23 at Los Angeles) Los Angeles 24, Cleveland 17.
1952	(Dec. 28 at Cleveland) Detroit 17, Cleveland 7.
1953	(Dec. 27 at Detroit) Detroit 17, Cleveland 16.
1954	(Dec. 26 at Cleveland) Cleveland 56, Detroit 10.
1955	(Dec. 26 at Los Angeles) Cleveland 38, Los Angeles 14.
1956	(Dec. 30 at New York) New York 47, Chicago Bears 7.
1957	(Dec. 29 at Detroit) Detroit 59, Cleveland 14.

1957 N. F. L. STATISTICAL LEADERS

RUSHING

	Att.	Y.G.
Brown, Cleveland	202	942
Casares, Bears	204	700
Bosseler, Washington	167	673
Johnson, Detroit	129	621
Wilson, Los Angeles	127	616

PASSING

	Comp.	Y.G.
O'Connell, Cleveland	63	1229
LeBaron, Washington	99	1508
Unitas, Baltimore	172	2550
Van Brocklin, L. A.	132	2105
McHan, Cardinals	87	1568

PASS-RECEIVING

	Caught	Yds.
Wilson, San Francisco	52	757
Berry, Baltimore	47	800
McClair, Pittsburgh	46	630
GIFFORD, N. Y.	41	588
Moore, Baltimore	40	687

SCORING

	TD	PAT	FG
Baker, Wash.	1	29	14
Groza, Cleve.	0	32	15
Cone, Green Bay	2	26	12
Blanda, Bears	1	23	14
Cothren, L. A.	0	28	11

Punting—CHANDLER, NEW YORK, 44.6-yd. avg. Punting Returns—Zagers, Washington, 15.5-yd. avg. Kick-Off Returns—Arnett, Los Angeles, 28-yd. avg. Interceptions—Davis, Baltimore, 10—219 yds.

SEASON AFTER SEASON...



"Ahh...
So Pure!"

She's New York's
Best Girl!

White Rock
for sparkling fine beverages

The White Rock Girl stays so popular because the brand she represents satisfies so completely! Thanks to *superior carbonation*, a White Rock drink keeps sparkling from the first pour to the last sip. So for a lighter, livelier drink every time, don't just mix it... *White Rock it!*



Today's N. F. L. Pairings

Home Team		Visiting Team	
NEW YORK		WASHINGTON	
Won 5, Lost 3		Won 3, Lost 5	
37—Cards at Buffalo	7	24—Philadelphia (a)	14
24—Philadelphia (a)	27	10—Chicago Cards (a)	37
21—Washington (a)	14	14—New York	21
6—Chicago Cards	23	37—Green Bay	21
17—Pittsburgh	6	10—Baltimore (a)	35
21—Cleveland (a)	17	16—Pittsburgh (a)	24
24—Baltimore	21	45—Chicago Cards	31
10—Pittsburgh (a)	31	10—Cleveland	20
—Washington	—	—New York (a)	—
—Philadelphia	—	—Cleveland (a)	—
—Detroit (a)	—	—Pittsburgh	—
—Cleveland	—	—Philadelphia	—
160	146	166	203

Home Team		Visiting Team	
BALTIMORE		LOS ANGELES	
Won 7, Lost 1		Won 5, Lost 3	
28—Detroit	15	27—Cleveland	30
51—Chicago Bears	38	33—San Francisco (a)	3
24—Green Bay at Milw. 17	42	42—Detroit (a)	28
40—Detroit (a)	14	10—Chicago Bears (a)	31
35—Washington	10	24—Detroit	41
56—Green Bay	0	41—Chicago Bears	35
21—New York (a)	24	56—San Francisco	7
17—Chicago Bears (a)	0	20—Green Bay (a)	7
—Los Angeles	—	—Baltimore (a)	—
—San Francisco	—	—Chicago Cards (a)	—
—Los Angeles (a)	—	—Baltimore	—
—San Francisco (a)	—	—Green Bay	—
272	118	253	182

CLEVELAND		PHILADELPHIA	
Won 6, Lost 2		Won 2, Lost 5, Tied 1	
30—Los Angeles (a)	27	14—Washington	24
45—Pittsburgh (a)	12	27—New York	24
35—Chicago Cards	28	3—Pittsburgh (a)	24
27—Pittsburgh	10	24—San Francisco	30
38—Chicago Cards (a)	24	35—Green Bay (a)	38
17—New York	21	21—Chicago Cards (a)	21
10—Detroit	30	24—Pittsburgh	31
20—Washington (a)	10	49—Chicago Cards	21
—Philadelphia	—	—Cleveland (a)	—
—Washington	—	—New York (a)	—
—Philadelphia (a)	—	—Cleveland	—
—New York (a)	—	—Washington (a)	—
222	162	197	213

DETROIT		CHICAGO BEARS	
Won 3, Lost 4, Tied 1		Won 5, Lost 3	
15—Baltimore (a)	28	34—Green Bay (a)	20
13—Green Bay (a)	13	38—Baltimore (a)	51
28—Los Angeles	42	28—San Francisco	6
14—Baltimore	40	31—Los Angeles	10
41—Los Angeles (a)	24	27—San Francisco (a)	14
21—San Francisco (a)	24	35—Los Angeles (a)	41
30—Cleveland (a)	10	24—Green Bay	10
35—San Francisco	21	0—Baltimore	17
—Chicago Bears	—	—Detroit (a)	—
—Green Bay	—	—Pittsburgh (a)	—
—New York	—	—Chicago Cards	—
—Chicago Bears (a)	—	—Detroit	—
197	202	217	169

CHICAGO CARDS		PITTSBURGH	
Won 2, Lost 5, Tied 1		Won 4, Lost 4	
7—New York at Buff.	37	20—San Francisco (a)	23
37—Washington	10	12—Cleveland	45
28—Cleveland (a)	35	24—Philadelphia	3
23—New York (a)	6	10—Cleveland (a)	27
24—Cleveland	38	6—New York (a)	17
21—Philadelphia	21	24—Washington	16
31—Washington (a)	45	31—Philadelphia (a)	24
21—Philadelphia (a)	49	31—New York	10
—Pittsburgh	—	—Chicago Cards (a)	—
—Los Angeles	—	—Chicago Bears	—
—Chicago Bears (a)	—	—Washington (a)	—
—Pittsburgh (a)	—	—Chicago Cards	—
192	241	158	165

GREEN BAY		SAN FRANCISCO	
Won 1, Lost 6, Tied 1		Won 3, Lost 5	
20—Chicago Bears	34	23—Pittsburgh	20
13—Detroit	13	3—Los Angeles	33
17—Baltimore at Milw.	24	6—Chicago Bears (a)	28
21—Washington (a)	37	30—Philadelphia (a)	24
38—Philadelphia	35	14—Chicago Bears	27
0—Baltimore (a)	56	24—Detroit	21
10—Chicago Bears (a)	24	7—Los Angeles (a)	56
7—Los Angeles	20	21—Detroit (a)	35
—San Fran. at Milw.	—	—Green Bay at Milw.	—
—Detroit (a)	—	—Baltimore (a)	—
—San Francisco (a)	—	—Green Bay	—
—Los Angeles (a)	—	—Baltimore	—
126	243	128	244

NATIONAL LEAGUE LEADERS

RUSHING

1. Brown, Cleveland	179 for 1173 yds.
2. Ameche, Baltimore	114 for 539 yds.
3. Mitchell, Cleveland	75 for 518 yds.

PASSING

1. LeBaron, Washington	56 of 102 for 971 yds.
2. Wade, Los Angeles	116 of 221 for 1858 yds.
3. McHan, Cardinals	50 of 109 for 881 yds.

RECEIVING

1. Retzlaff, Philadelphia	38 for 553 yds.
2. Berry, Baltimore	36 for 565 yds.
3. Conner, San Francisco	36 for 369 yds.

SCORING

1. Brown, Cleveland	102 pts.
2. Galimore, Bears	66 pts.
3. Moore, Baltimore	60 pts.

NATIONAL LEAGUE STANDINGS

EASTERN CONFERENCE

	W.	L.	T.	Pct.	Points For	Points Agst.
Cleveland	6	2	0	.750	222	162
NEW YORK	5	3	0	.625	160	146
Pittsburgh	4	4	0	.500	158	165
Washington	3	5	0	.375	166	203
Chicago Cards	2	5	1	.286	192	241
Philadelphia	2	5	1	.286	197	213

WESTERN CONFERENCE

Baltimore	7	1	0	.875	272	118
Chicago Bears	5	3	0	.625	217	169
Los Angeles	5	3	0	.625	253	182
Detroit	3	4	1	.429	197	202
San Francisco	3	5	0	.375	128	244
Green Bay	1	6	1	.143	126	243

PLEASE USE ENTRANCE RAMP NEAREST YOUR SEAT

ONCE
IN A
BLUE
MOON



Rare is the whiskey of such character and savor that it unfailingly offers complete and perfect pleasure. And if this triumph won't quite change the stars in their courses or shade a gold moon blue, at least it can win more advocates than any other whiskey in the world's history. It can . . . and *did*. Its name is 7 Crown.

Say **Seagram's** and be **Sure**
OF THE FIRST AND FINEST AMERICAN WHISKEY



THEY SAID IT COULDN'T BE DONE *BUT HERE IT IS!*

PUFF BY PUFF...

TODAY'S L&M GIVES YOU...

Less tars & More taste

DON'T SETTLE FOR ONE WITHOUT THE OTHER!

Change to L&M and get 'em both. Yes, today's L&M gives you the unbeatable combination of less tars and more taste! L&M's taste is so full and rich . . . it's a rare mixture of the Southland's finest cigarette tobaccos. And you get L&M's patented* filtering process — assuring you of less tars in the smoke, puff by puff, than ever before.

"Couldn't be done, couldn't be done." Hardly anyone dreamed that 50,000,000 people would be able to enjoy a "Western" . . . in their own homes . . . on the same evening! But that's how many Americans watch "GUNSMOKE" . . . TV's most popular program, every Saturday on CBS-TV.

*Only L&M has U. S. patent number on the side of the pack. This patent (No. 2,805,671) covers L&M's exclusive process that electrostatically adds extra filtering fibers.

Light into that **Live Modern** flavor | change to modern **L&M**

AMANDA BLAKE AND JIM ARNESS TAKE AN L&M BREAK ON GUNSMOKE SET, HOLLYWOOD

©1958 LIGGETT & MYERS TOBACCO CO.