

PHILADELPHIA
EAGLES

NEW YORK
GIANTS



**OFFICIAL
PROGRAM**

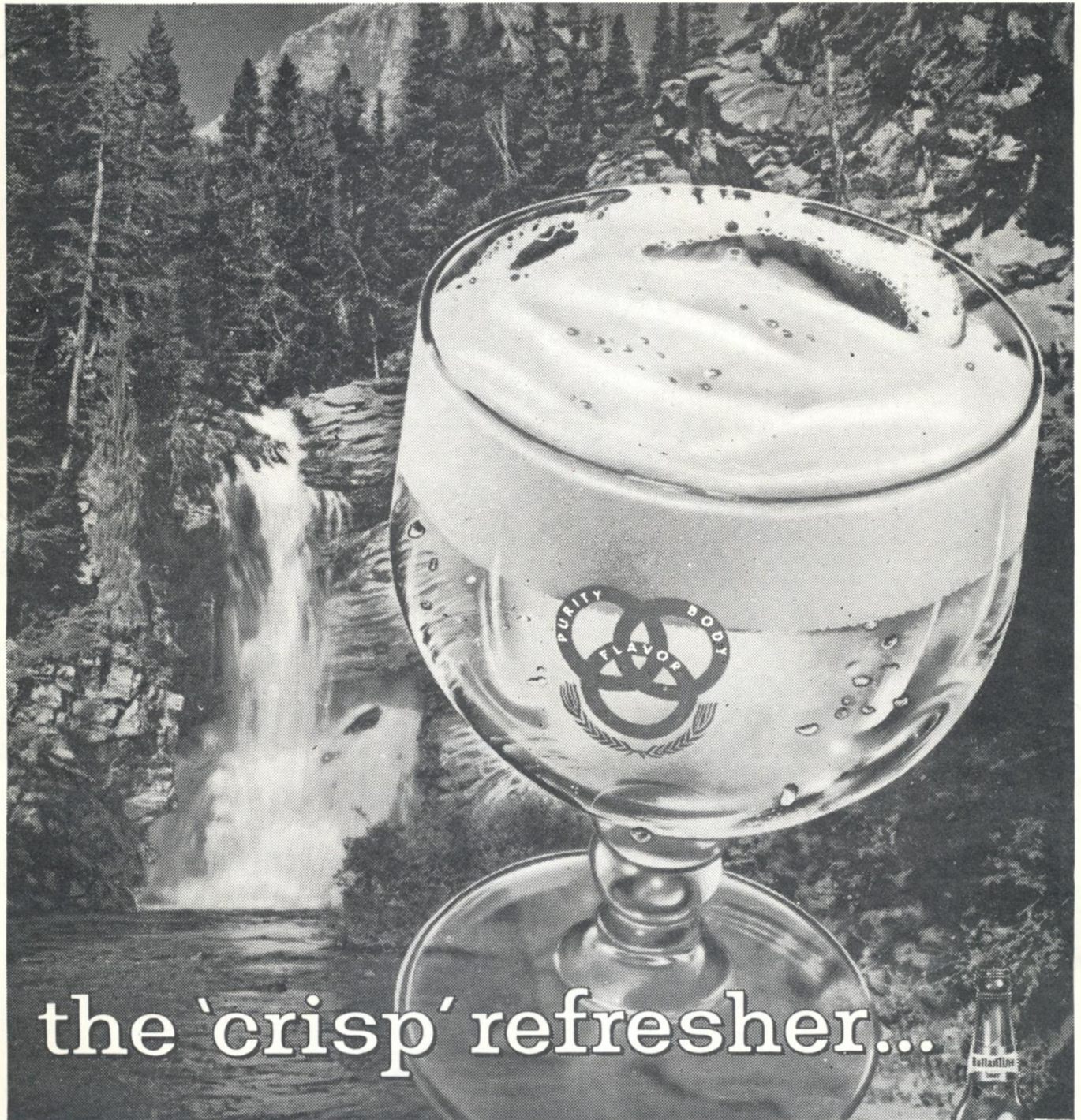
50¢

OCTOBER 4, 1959

FRANKLIN FIELD

B. Brown

Ballantine LIGHT LAGER beer



the 'crisp' refresher...

© IS A REG. T. M. OF P. BALLANTINE & SONS, NEWARK, N. J.

**It's the crisp kind of light
...with true lager flavor!**



No wonder Ballantine is the largest-selling beer in the East.





THE PHILADELPHIA EAGLES FOOTBALL CLUB

JAMES P. CLARK
Chairman of Board

FRANK L. McNAMEE
President

JOSEPH A. DONOGHUE
Exec. V. P. & Sec.

VINCENT A. McNALLY
General Manager

HARRY S. SYLK
Treasurer

LAWRENCE T. SHAW
Head Coach

EDWARD S. HOGAN
Publicity Director

S.E. CORNER 15th AND LOCUST STREETS

• PHILADELPHIA 2, PA. •

PEnnypacker 5-4014

EAGLES AND STEELERS RENEW OLD RIVALRY SUNDAY, OCT. 11

Spearheaded by the great Bobby Layne, now in his 12th season in the National League and apparently as sharp as ever, Pittsburgh's rejuvenated Steelers will be on Franklin Field next Sunday to meet the Eagles in another cross state grid rivalry. All of the Eagles-Steelers' games in the past have been exciting right up to the final gun.

Since Layne, former Detroit Lions' star, joined the Steelers late last October, the club is unbeaten. It opened the 1959 National League season by whipping the Cleveland Browns in a 17-7 upset before a packed house at Forbes Field, Pittsburgh and with Layne throwing two TD passes, kicking a 25-yard field goal and adding both extra points.

Defensively, the Steelers are perhaps the toughest in the Eastern Conference. Now, with an offense to balance it, Pittsburgh is title-minded. Its stock rose considerably after beating the Browns.

Layne's favorite target for his aerial shots is the sensational Jimmy Orr, one of the 1958 star rookies from the Uni-

versity of Georgia. This six-foot-two speedster last year caught 33 for 910 yards and seven touchdowns. His average per catch, 27.6 yards, was the highest in the league.

Tom "The Bomb" Tracy is the Steelers' main rushing threat. He's only 5'9 and weighs 205 pounds but as one Pittsburgh typewriter jockey put it, "He folds himself up like a ball and just rolls."

Tracy was third in the NFL in rushing in 1958 with 714 yards on 169 carries and five touchdowns. He also caught 32 passes for 535 yards and four more scores.

Heading up Pittsburgh's famed defense are the durable Ernie Stautner in his 10th year; linebacker Dale Dodrill, ninth season, and fourth year man Joe Krupa. Dodrill, 6'1, 215, ranks with the league's top linebackers and always has been a tough nut for the Eagles to crack.

When the Eagles and Steelers meet, the fur flies, so **DON'T FORGET THE DATE: SUNDAY, OCTOBER 11 AT FRANKLIN FIELD.**



MORT FARR *Mr. Color TV* says:

The Price is Right! Performance is Proved!

You can now own **RCA VICTOR** "LIVING COLOR" TV for only pennies a day more than a good black and white set . . . and we give you a generous trade in allowance on your present TV. You get the finest reception in black and white on all regular shows plus all color shows in beautiful, natural color.

Come in for a demonstration . . . Color Shows every night



With so many big shows in COLOR this season, you'll want to enjoy all the color and excitement and a feeling of "being there" that is yours only with "Living Color" TV! And you'll want to deal with America's champion brand name retailer, Mort Farr . . . who sells, installs and services more Color TV than any other dealer. Call now for immediate delivery.

See this ALL-STAR lineup of top TV Shows for the whole family:

- WORLD SERIES • NCCA FOOTBALL GAMES • PRO-CHAMPIONSHIP FOOTBALL • ARMY-NAVY GAME • ROSE BOWL GAME • TOURNAMENT OF ROSES • SUNDAY SHOWCASE • TUESDAY SPECTACULARS
- FRIDAY SPECIALS • NEW WESTERNS • TOP VARIETY REVUES
- BEST CHILDREN'S PROGRAMS

. . . plus many other network and local shows being announced daily.

VISIT OUR NEW HI-FIDELITY AND STEREO DEMONSTRATION ROOMS

MORT FARR

Champion Brand Name Retailer

Farr Better Service For Over 35 Years

69th St. below Chestnut • Open Every Nite 'Til 10

PHONE: GR 6-6060 • FL 2-3400

MEET THE PHILADELPHIA EAGLES

DARREL G. ASCHBACHER

Pos.	Born	Ht.	Wt.	College	Yr. Eagle	Residence
LB-E	6/2/35	6'1½	223	Oregon	Rookie	Prineville, Ore.

Signed as free agent . . . recommended by Norman Van Brocklin . . . played guard, tackle and end in college . . . has possibilities as defensive end or line-backer in pro league.

BILLY RAY BARNES

Pos.	Born	Ht.	Wt.	College	Yr. Eagle	Residence
B	5/14/35	5'11	202	Wake Forest	3rd	Landis, N. C.

Bullet . . . bulldozer . . . led Eagles in ground gaining in 1958 for second straight season grinding out 551 yards on 156 tries . . . also scored seven touchdowns running . . . in two years with Birds totaled 1,080 yards rushing on 299 attempts for 3.6 average . . . in 1958 caught 35 passes for 423 yards, second to leader Pete Retzlaff . . . two-year total in pass receptions: 54 for 635 yards . . . last season threw six passes, completed four for 104 yards and three touchdowns including 71-yarder to Bobby Walston vs. Chicago Cardinals . . . finished ninth among league's top ball carriers in 1957 and eighth in 1958 . . . as Wake Forest collegian second in nation in rushing in 1956 with 1,010 yards . . . named to Look All-American and Atlantic Coast Conference All teams . . . also voted Football Player of Year in AAC . . . star baseball player.

CHARLES PHILIP BEDNARIK

Pos.	Born	Ht.	Wt.	College	Yr. Eagle	Residence
C-LB	5/1/25	6'3	235	Pennsylvania	11th	Abington, Pa.

Chuck . . . the 1959 football season will be Chuck's 11th in the National League, all with the Eagles . . . a top pro star since his rookie year, 1949, Chuck ranks with the all-time great linebackers and centers . . . after nine years of playing defense, was shifted to offensive center by head coach Buck Shaw for the '58 season to provide better blocking and pass protection . . . rugged, durable, missing only three games out of possible career total of 120 . . . played total of 334 minutes in 1958 . . . born and reared in Bethlehem, Pa. . . spent two and half years in Air Corps seeing service in ETO . . . waist gunner for more than 30 missions . . . entered Pennsylvania after war service in 1945 . . . named All-American last two varsity seasons . . . Eagles' bonus pick for 1949 . . . participated in seven of the nine All Pro Bowl games in Los Angeles . . . year round salesman for concrete company . . . married childhood sweetheart and makes his home with wife and four daughters including set of twins in Abington, Pa.

RICHARD ADAM BIELSKI

Pos.	Born	Ht.	Wt.	College	Yr. Eagle	Residence
E	9/17/32	6'0½	218	Maryland	5th	Maple Shade, N. J.

Dick . . . converted to right end shortly after start of 1958 season . . . finished with pass catching record of 23 for 234 yards and one touchdown . . . played flanker and fullback in 1957 and fullback two previous years . . . handles team's kicking off chores . . . excellent blocker . . . Eagles' number one selection for 1955 season . . . holds club record with two 50-yard field goals.

THOMAS J. BROOKSHIER

Pos.	Born	Ht.	Wt.	College	Yr. Eagle	Residence
B	12/16/31	6'1	198	Colorado	5th	Denver, Colo.

Won starting role in defensive secondary as rookie in 1953 . . . has held it ever since with two years out (1954-55) for Air Force duty . . . considered one of the top pass defenders in National League . . . clever, hard tackler . . . assistant coach under Buck Shaw at Air Force Academy in 1955 . . . in four seasons with Eagles has intercepted 14 passes for 146 yards . . . hobbled by leg injuries most of 1958 season . . . still played 269 minutes in 11 games.

FRANCIS MARION CAMPBELL

Pos.	Born	Ht.	Wt.	College	*Yr. Eagle	Residence
T	5/25/29	6'3	250	Georgia	4th	Chester, S. C.

Swamp Fox . . . tough, hard-bitten tackle . . . bothered by a foot injury all season but still played 11 games totaling 315 minutes . . . easy going South Carolinian except on football field . . . extremely popular with teammates . . . played two years (1954-55) with San Francisco before joining Eagles 10 days prior to opening of 1956 season . . . plugged biggest weakness on Eagles' line . . . third choice by 49ers for 1953 season but didn't bow in as a rookie until 1954 . . . spent two years as Army officer following graduation from Georgia.

*Played two seasons (1954-55) with San Francisco.

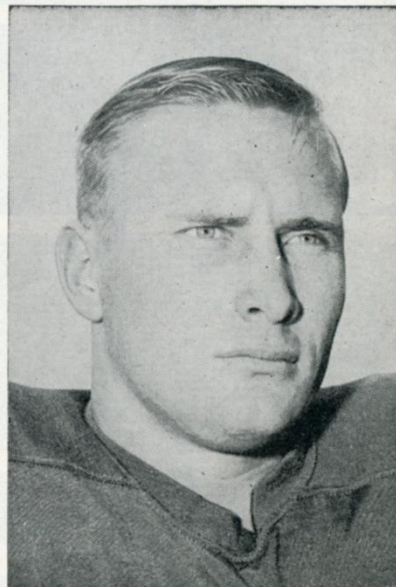


Darrel Aschbacher, G

Need Money . . . Fast?

You name it—from \$100 up. Any of our 36 convenient offices will serve you quickly, courteously . . . and at low bank rates.

The
First Pennsylvania
Banking and Trust Company
Member Federal Deposit Insurance Corporation



Billy Barnes, B

FOOTBALL BY THE YARD!



Home and Away Games

THE PHILADELPHIA EAGLES

Presented by: Your Rambler Dealers

M. A. Bruder & Sons, Inc. (M.A.B. Paint Stores)
Stewart-Warner Corp. (Alemite)



Home and Away Games

UNIVERSITY OF PENNSYLVANIA

Presented by: The Gulf Oil Corporation

and The Philadelphia Electric Company



Play by Play by

BILL CAMPBELL

Commentary by

BILL BRANSOME

THESE SPORTS EXCLUSIVES ON...

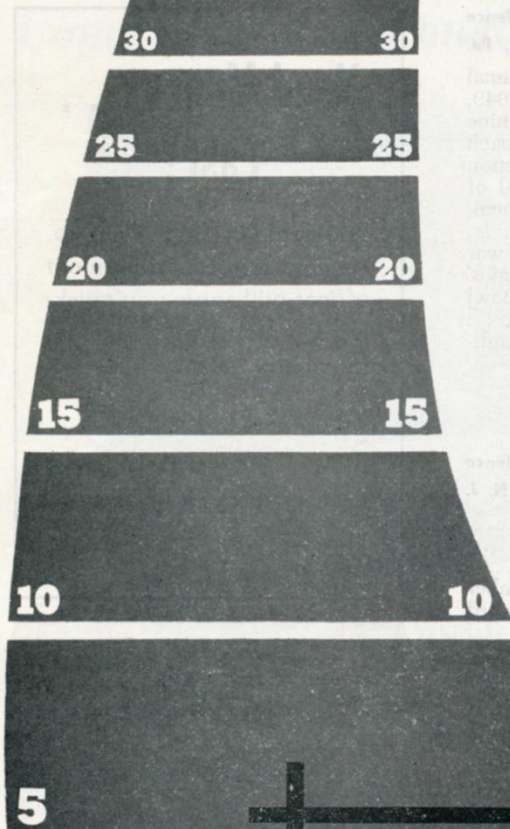
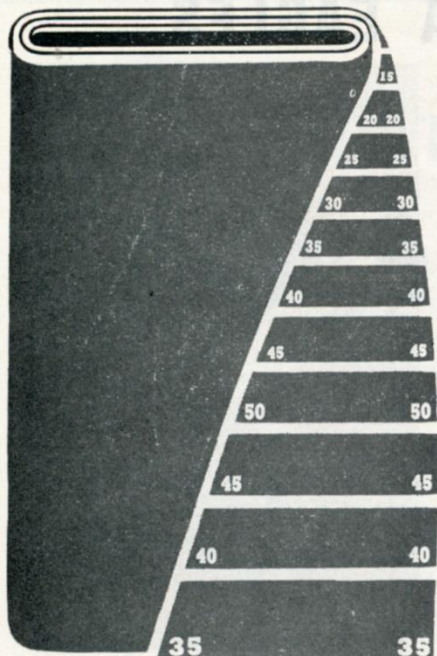
WCAU

RADIO

CBS IN PHILADELPHIA

DOUBLE YOUR
LISTENING
PLEASURE
ON

1210



MEET THE PHILADELPHIA EAGLES

GERALD BERNARD HUTH

Pos.	Born	Ht.	Wt.	College	*Yr. Eagle	Residence
G	7/23/33	5'11	210	Wake Forest	1st	Floyd Knobs, Ind.

Secured from New York Giants in trade for Tom Scott . . . surprise rookie starter as offensive guard for Giants in 1956 . . . excelled as blocker . . . in Army during 1957 and '58 seasons.

*Played 1956 with New York.

GENE PAUL JOHNSON

Pos.	Born	Ht.	Wt.	College	Yr. Eagle	Residence
B	9/18/35	6'0	190	Cincinnati	Rookie	Charleston, W. Va.

Gene . . . number one end at Cincinnati for two seasons then moved to halfback for senior year . . . hurt most of spring . . . recovered and injured again prior to start of 1958 season . . . returned to full time action for last three games . . . considered excellent pass receiver but even a better defensive back.

CHRISTIAN ADOLPH JURGENSEN

Pos.	Born	Ht.	Wt.	College	Yr. Eagle	Residence
QB	8/23/34	5'11	200	Duke	3rd	Roxboro, N. C.

Sonny . . . played only a total of 25 minutes in 1958 as against 120 his rookie year, 1957 . . . but Sonny says he learned more watching Norman Van Brocklin and playing less than he did in 1957 . . . both Van Brocklin and head coach Buck Shaw freely predict Sonny has everything to be a top QB star in NFL . . . threw 22 passes and completed 12 for 259 yards but until finale in Washington had thrown only four, appearing as a QB in only one other game . . . against the Skins hit on 10 out of 18 for 226 and a long of 61 . . . Ace Parker, Duke coaching aide, said of Jurgensen: "The finest pro quarterback prospect I've seen in years."

EDWARD MICHAEL KHAYAT

Pos.	Born	Ht.	Wt.	College	*Yr. Eagle	Residence
T	9/14/35	6'3	230	Tulane	2nd	Mott Pt., Miss.

Eddie . . . originally signed as free agent by Washington Redskins for 1957 season . . . played first string defensive tackle for Skins in '57 . . . released middle of 1958 season . . . played last five games for Eagles in '58, signed as free agent . . . brother starting tackle for Ole Miss.

*Played with Washington (1957).

WALTER JOSEPH KOWALCZYK

Pos.	Born	Ht.	Wt.	College	Yr. Eagle	Residence
B	4/17/35	6'	205	Michigan State	2nd	Rochester, Mich.

Reds . . . one of the league's top rookies of 1957 . . . played offense and defense totaling 216 minutes in 12 games . . . head coach Buck Shaw says: "Kowalczyk will be a great player in this league in a couple of years either on offense or defense" . . . with Norton and Brookshier, regulars on defense, playing at only one half their efficiency due to injuries, Kowalczyk spelled both during the entire 1958 season . . . tough spot for rookie on defense . . . carried the ball only 17 times for 43 yards, caught eight passes for 72 and scored one TD . . . one of Michigan State's greatest football players . . . named All-American, All Big Ten and All Midwest in senior year (1957) . . . also named MVP for 1956 Rose Bowl classic.

THOMAS LOUDERBACK

Pos.	Born	Ht.	Wt.	College	Yr. Eagle	Residence
LB-G	3/5/33	6'1	220	San Jose State	2nd	Petaluma, Cal.

Originally selected by Washington Redskins for 1955 season . . . released then spent next two seasons in Army . . . signed as free agent by Cleveland prior to 1958 season . . . also cut by Browns and signed by Eagles week before '58 season opened . . . three-sport star at high school in Petaluma and played football at Santa Rosa Junior College before transferring to San Jose State where he captained team in 1954 . . . named to All-Pacific Coast eleven in 1954 and played in East-West and College All Star games in 1955.

KENNETH ADAM MacAFEE

Pos.	Born	Ht.	Wt.	College	*Yr. Eagle	Residence
E	8/3/29	6'2	215	Alabama	1st	North Easton, Mass.

Originally signed by New York Giants as free agent while in Marines . . . with Giants five seasons (1954-1958) . . . traded to Eagles prior to start of 1959 season in deal for Tom Scott . . . made football reputation as member of Quantico Marine eleven . . . good speed, sharp blocker . . . in five seasons in NFL caught 70 passes for 1,073 yards and 17 touchdowns.

*Played with New York (1954-58).



Chuck Bednarik, C

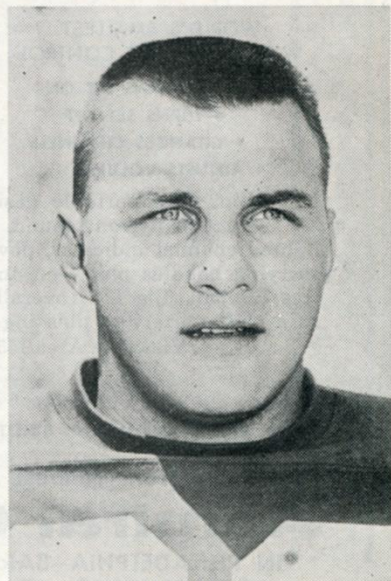
Exide

BATTERIES

for

EVERY BATTERY PURPOSE

THE ELECTRIC STORAGE BATTERY CO.
P.O. Box 8109 Phila. 1, Pa.



Dick Bielski, E



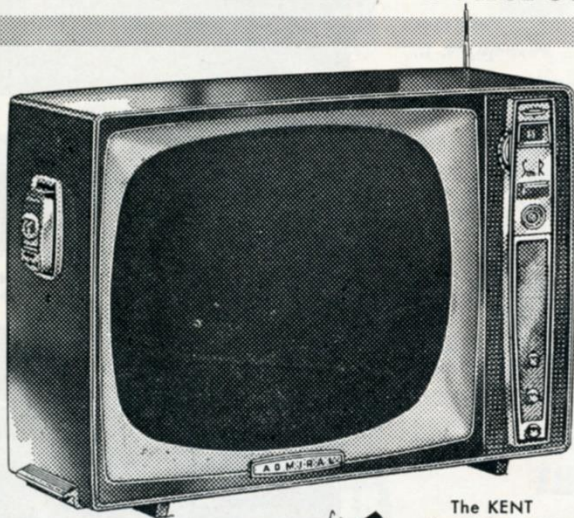
Admiral Silver

Anniversary Value!

NEW SPACE AGE

Admiral TV

World's First Portable TV
with
Wireless Remote Control



The KENT
Model PS17F23

WORLD'S SLIMMEST,
SMARTEST PORTABLE
PLUS

Admiral SON-R

WORLD'S SMALLEST
WIRELESS REMOTE CONTROL

- TURNS SET ON
- TURNS SET OFF
- CHANGES CHANNELS
- ADJUSTS VOLUME

New thin, trim portable design with every big TV feature. Out-front sound, big sharp pictures, lighted channel indicator, powerful. New chassis, carrying handles plus—an amazing Son-R Wireless Control. Big 17" (overall diagonal) picture. In a wide variety of pleasing colors.
(Viewable Area 155 sq. in.)



Admiral MARK OF QUALITY THROUGHOUT THE WORLD!

For the Name of Your Nearest ADMIRAL Dealer Call

Admiral Corp.

IN PHILADELPHIA—Baldwin 3-9810
IN HARRISBURG—JOrdan 4-0266

PHILADELPHIA EAGLES

THOMAS FRANKLIN McDONALD

Pos.: B-E—Born: 7/26/34—Ht.: 5'10—Wt.: 182

College: Okla.—Yr. Eagle: 3rd—Res.: Albuquerque, N. M.

Scouter . . . Sooner . . . hobbled by pulled muscles through most of 1958 pre-season campaign . . . missed league opener then went on pass catching spree . . . totaled 29 caught for 603 yards and nine touchdowns . . . averaged better than 20 yards per catch . . . played only 10 games, also missing game at New York because of injury . . . caught only one vs. New York at Franklin Field but that was a 91-yard beauty for a TD . . . also scored on long pass plays of 47, 31 and 26 yards . . . used only sparingly rookie year (1957) until final third of season when inserted into lineup as flanker or end then caught fire . . . returned 14 kickoffs in '58 for 262 yards and 18 punts for 135 . . . in two seasons totals 38 passes caught for 831 yards and 12 touchdowns . . . All-American, unanimous, senior year at Oklahoma (1957) . . . won Maxwell Club award as nation's outstanding college football player . . . probably fastest man on Eagles . . . as collegian clocked in 9.9 for "100" and 21.8 for "220" . . . played in 1959 All-Pro Bowl game, Los Angeles.

JOHN STANLEY NOCERA

Pos.: B—Born: 5/4/34—Ht.: 6'11/2—Wt.: 215

College: Iowa—Yr. Eagle: Rookie—Res.: Youngstown, O.

Nose . . . rated as one of the better blockers and linebackers in Big Ten . . . good team leader . . . started first game as sophomore in 1957 Rose Bowl game and his last for Iowa in 1959 Rose Bowl classic . . . best offensive season, 1957, when he averaged 6.5 yards per carry . . . first came to Iowa in 1953, stayed one day, went home and joined Army for tour of duty in Alaska . . . returned to Iowa for 1956 season . . . stand-out on defense at Iowa as well as on offense . . . strong enough and quick enough to play linebacker.

DONALD FRED OWENS

Pos.: T—Born: 4/3/32—Ht.: 6'5—Wt.: 255

College: Miss. Southern—*Yr. Eagle: 2nd—Res.: St. Louis, Mo.

Big Boy . . . played as rookie with Washington Redskins in 1957 . . . secured by Eagles in player trade . . . performed as defensive tackle in all 12 league games, playing total of 353 minutes . . . named outstanding lineman of 1957 Senior Bowl game . . . Korean veteran.
*Played 1957 with Washington.

JOSEPH ANTHONY PAGLIEI

Pos.: B—Born: 4/12/34—Ht.: 6'—Wt.: 212

College: Clemson—Yr. Eagle: Rookie—Res.: Clairton, Pa.

Pag . . . up for second try . . . reported late in 1958 pre-season campaign . . . then returned to finish Army service . . . placed on Eagles' military reserve . . . three-year star at Clemson as ball carrier, passer and punter.

PHILADELPHIA EAGLES

CLARENCE PEAKS

Pos.: FB—Born: 9/23/35—Ht.: 6'1—Wt.: 218
College: Michigan State—Yr. Eagle: 3rd—Res.: Phila., Pa.

Hi . . . finished second in ball carrying in 1958 and fourth in pass receiving . . . saw action in only 11 games, playing 229 minutes . . . rushed for 386 yards on 115 carries and gained 248 yards on 29 pass receptions . . . had best day against Chicago Cardinals in Franklin Field, scoring four times, three on ground . . . in two seasons accounted for 881 yards on 240 carries; 347 yards on 40 passes caught and six touchdowns . . . Eagles' number one selection for 1957 . . . in tough Big Ten averaged 5.2 yards per carry and better than 41 yards per punt.

ROBERT F. PELLEGRINI

Pos.: LB—Born: 11/13/34—Ht.: 6'2—Wt.: 225
College: Maryland—Yr. Eagle: 3rd—Res.: Pennsauken, N. J.

Rocky . . . played linebacker last season (1958) and did excellent job . . . head coach Buck Shaw says: "Pellegrini is on his way to rank with the league's all time great linebackers" . . . moved to defensive spot when veteran linebacker Chuck Bednarik was switched to offensive center . . . intercepted four passes for 90 yards to lead club . . . returned to Eagles in 1958 after year's absence in Army . . . star rookie in 1956 . . . named "Outstanding Service Player of Year" including all Army, Navy and Marine teams in 1957 . . . Eagles' number one selection for 1956 after being named everybody's All-American at Maryland in 1955.

ARTHUR L. POWELL

Pos.: E—Born: 2/25/37—Ht.: 6'2½—Wt.: 200
College: San Jose State—Yr. Eagle: Rookie—Res.: San Diego, Cal.

11th choice in 1959 selections . . . played one year of collegiate football but led nation that year (1956) with 40 pass receptions for 583 yards and five touchdowns . . . played football in Canada last two seasons . . . also basketball performer of note, scoring 47 points in one game for San Jose State . . . brother to Charley Powell, former San Francisco 49er and now professional boxer.

PALMER RETZLAFF

Pos.: E-FL—Born: 8/21/31—Ht.: 6'1—Wt.: 209
College: S. Dakota S.—Yr. Eagle: 4th—Res.: Ellendale, N. D.

Pistol Peter . . . after two years of alternating between offense and defense, changed to flanker by Buck Shaw . . . blossomed into top echelon of pass catchers in National League . . . tied for league championship with Baltimore's Ray Berry, each catching 56 . . . Pete made 766 yards and two touch downs . . . caught seven vs. Washington here and again nabbed seven against the Chicago Cards in Franklin Field . . . caught six for 121 yards against Green Bay . . . in three years with Eagles, Pete has caught 78 for 1,045 yards and two TD's . . . former Little All-American from South Dakota State where he set four ball carrying records . . . also shot put and discus star . . . spent two years in Army following graduation . . . originally selected by Detroit Lions . . . sold to Eagles shortly after start of 1956 season . . . played in his first Pro Bowl game in 1959 and scored winning TD on pass from Norman Van Brocklin.

JESSE WILLIAM RICHARDSON

Pos.: T—Born: 8/18/30—Ht.: 6'3—Wt.: 270
College: Alabama—Yr. Eagle: 7th—Res.: Phila., Pa.

Big Jess . . . missed all of the 1957 season with torn ligaments . . . but returned for a full season in '58 showing no ill effects of knee injury . . . plays left tackle in four-man defensive line . . . in 1958 totaled 365½ minutes in 12 games, third best on team.


*America's Most
Magnificent Bourbon*



**Great companion at the game . . .
Old Hickory in this handy pint flask!**

OLD HICKORY

STRAIGHT BOURBON WHISKY • 86 PROOF
OLD HICKORY DISTILLERS CO., PHILA., PA.



Heidelberg

Lounge
and Restaurant

~~~~~

*Dinner-Supper*

*Viennese & German Food*

*Imported Beer on Tap*

~~~~~

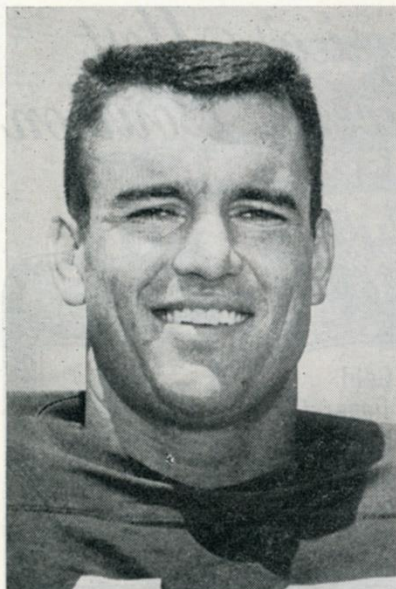
**CONTINUOUS
ENTERTAINMENT
TILL 2 A.M.**

~~~~~

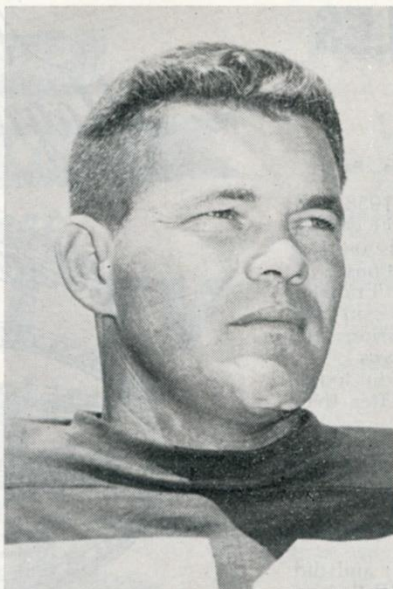
**PENN-SHERWOOD HOTEL**  
3900 Chestnut Street  
Philadelphia  
EVergreen 6-9000

KURT A. SMITH      INNKEEPER

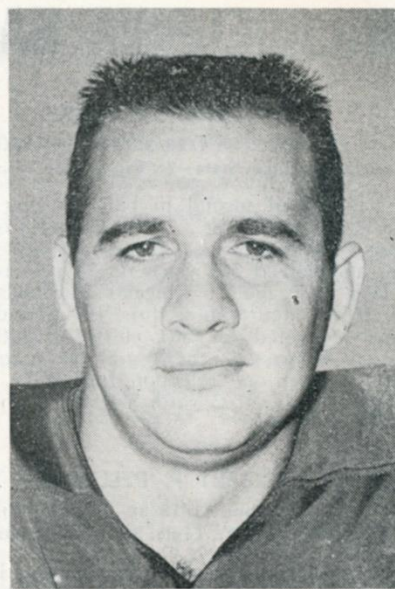
# MEET THE PHILADELPHIA EAGLES



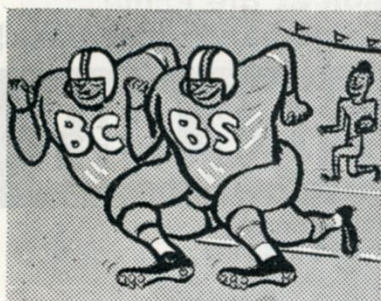
Tom Brookshier, B



Marion Campbell, T



Jim Carr, B



Send for **FREE**  
**FOOTBALL MANUAL**

"How to Be a  
Grandstand Quarterback"

by } Gene Kelly and  
Charles Tomasco

For your copy, write Public Relations Dept.

**BLUE CROSS**

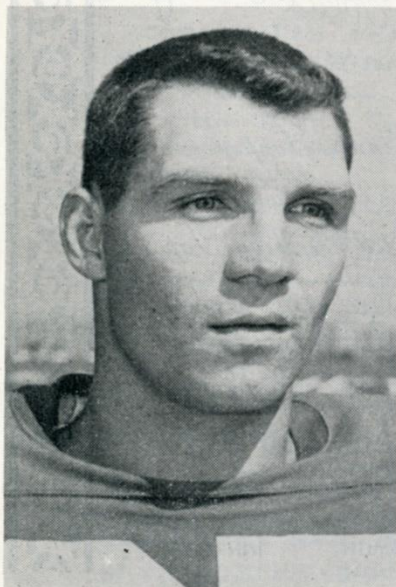
112 S. 16th St., Philadelphia 2



Gerry Huth, G



and enjoy a  
fresh-tasting cigar



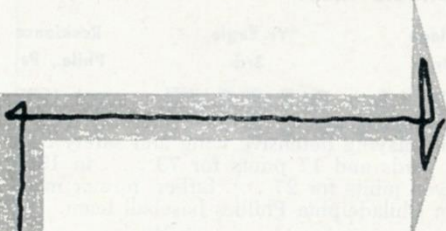
Gene Johnson, B



Sonny Jurgensen, QB



Ed Khayat, T



*For complete one-stop banking  
and trust facilities...*

bank at

# **FIDELITY**

**PHILADELPHIA TRUST COMPANY**

**25** *offices in Philadelphia, Delaware, Bucks and Montgomery Counties*

Accounts insured up to \$10,000 for each depositor through Federal Deposit Insurance Corporation

# **ALL OUT PERFORMANCE**

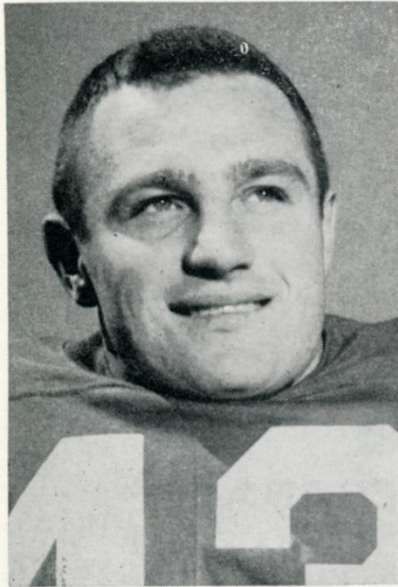
**Your dependable  
low-cost  
electric servant**



## **PHILADELPHIA ELECTRIC COMPANY**

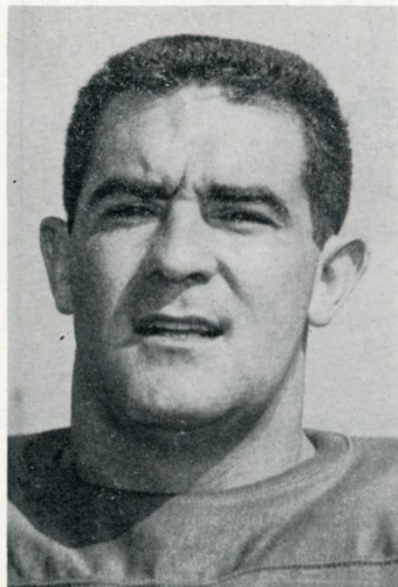
A BUSINESS-MANAGED, TAX-PAYING UTILITY COMPANY OWNED BY MORE THAN 100,000 STOCKHOLDERS

# MEET THE PHILADELPHIA EAGLES



Walt Kowalczyk, B

IN PHILA.  
THE SWING IS TO  
**AMOROSO'S**  
ITALIAN  
**BREAD - ROLLS**  
try a  
**HOAGIE**  
on  
**AMOROSO'S**  
**ROLL**



Tom Louderback, LB

## LEON FRANCIS RILEY

| Pos. | Born    | Ht. | Wt. | College | *Yr. Eagle | Residence   |
|------|---------|-----|-----|---------|------------|-------------|
| B    | 8/24/33 | 6'1 | 190 | Detroit | 3rd        | Phila., Pa. |

Lee . . . joined Eagles first time in 1956 from Detroit Lions . . . spent 1957 in Army where he was named to All-Army team as offensive halfback at Ft. Dix . . . returned to Eagles last season playing defensive wing and safety . . . in 1956 returned 15 kickoffs for 381 yards and 17 punts for 73 . . . in 1958 returned nine kickoffs for 205 and seven punts for 27 . . . father, former manager of farm team and talent scout for Philadelphia Phillies baseball team.

\*Played one year (1955) with Detroit.

## THERON COLEMAN SAPP

| Pos. | Born    | Ht. | Wt. | College | Yr. Eagle | Residence      |
|------|---------|-----|-----|---------|-----------|----------------|
| B    | 6/15/35 | 6'1 | 200 | Georgia | Rookie    | Macon, Georgia |

Bomber . . . one of the South's top running backs . . . led South to 21-12 spectacular victory over North in 1959 Senior Bowl classic, rushing for 158 yards and scoring two touchdowns on plunges . . . in three seasons at Georgia, netted 1,265 yards, losing only eight in three years . . . averaged 4.8 per try . . . overcame accident to neck in 1954 . . . led team two straight years in rushing, gaining 599 in 1957 and 635 in 1958 . . . named to All Southeast Conference and All-Southern first teams . . . youngest of 10 children.

## J. D. SMITH

| Pos. | Born    | Ht. | Wt. | College | Yr. Eagle | Residence              |
|------|---------|-----|-----|---------|-----------|------------------------|
| T    | 5/27/36 | 6'5 | 250 | Rice    | Rookie    | Richland Springs, Tex. |

One of the biggest football players in Southwest Conference . . . played end as freshman . . . switched to tackle as sophomore . . . named to All-Southwest Conference first team . . . played in Blue-Gray game . . . starred in Rice games against Army and Texas as defensive tackle . . . coaches say he has sufficient speed to play offensive tackle with pros.

## WILLIAM J. STRIEGEL

| Pos. | Born    | Ht. | Wt. | College | Yr. Eagle | Residence     |
|------|---------|-----|-----|---------|-----------|---------------|
| G-LB | 5/28/36 | 6'2 | 230 | C O P   | Rookie    | Chico, Calif. |

Bill . . . selected for 1958 season . . . hurt leg in practice for College All-Star game and declared out for season . . . three-year letterman at COP . . . starter in 1956 and 1957 . . . named All Pacific Coast and All American honorable mention . . . led team in defensive statistics, totaling 127 points on 17 unassisted tackles, 51 tackle assists, one pass interception and four recovered fumbles . . . also lettered in rugby.

## ROBERT HAROLD WALSTON

| Pos. | Born     | Ht. | Wt. | College | Yr. Eagle | Residence          |
|------|----------|-----|-----|---------|-----------|--------------------|
| E    | 10/17/28 | 6'  | 191 | Georgia | 9th       | Maple Shade, N. J. |

Bobby . . . steady, dependable Eagle since 1951 . . . holds three Eagles' lifetime records: most extra points (214); most points one game (25); most field goals (48) and most total points (580) . . . also leads club in field goals one season (11) and field goals one game (4) . . . led Eagles in point scoring seven out of last eight years . . . in 1958 caught 21 passes for 298 yards and three touchdowns including a 71-yarder from halfback Billy Barnes against the Chicago Cardinals . . . totaled 227 passes caught in eight seasons for 3,909 yards and 37 touchdowns . . . sure-foot Bobby has missed only 12 conversions in 226 attempts.

## CHARLES FREDERICK WEBER, JR.

| Pos. | Born    | Ht. | Wt. | College      | *Yr. Eagle | Residence              |
|------|---------|-----|-----|--------------|------------|------------------------|
| LB   | 3/25/31 | 6'  | 235 | West Chester | 1st        | Huntingdon Valley, Pa. |

Chuck . . . first year with club he has wanted to play for since Abington (Pa.) High School days . . . named Little All-American guard at West Chester State Teachers in 1953 and All-Marine in 1954 . . . selected by Cleveland Browns and played for them in 1955 season . . . then traded to Chicago Cards and remained with them through 1958 season . . . secured by Eagles in off-season trade for linebacker Bill Koman . . . captained Cards' 1958 season . . . teaches school in off season.

\*Played with Cleveland (1955) and with Chicago Cards (1956-57-58).

OUTFITTERS OF  
**PHILADELPHIA EAGLES**

With

*MacGregor*

FOOTBALL EQUIPMENT—used by leading professional football and baseball teams and college and high school teams throughout the country.

**HEY KIDS!**


Now you can get junior size, official Philadelphia Eagles helmets, uniforms and footballs with authentic Eagles players signatures!

**MITCHELL & NESS**

DISTRIBUTORS

1312 ARCH STREET

PHILADELPHIA

*Novelty Printing*  *Company*

512 SOUTH BROAD STREET • PHILADELPHIA 46, PENNA.

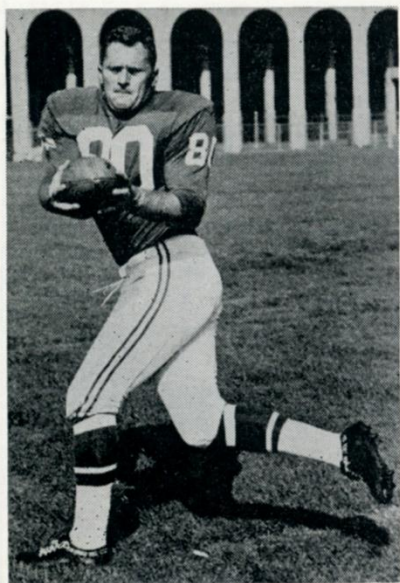
PENNYPACKER 5-4100

FINE LETTERPRESS AND OFFSET PRINTING

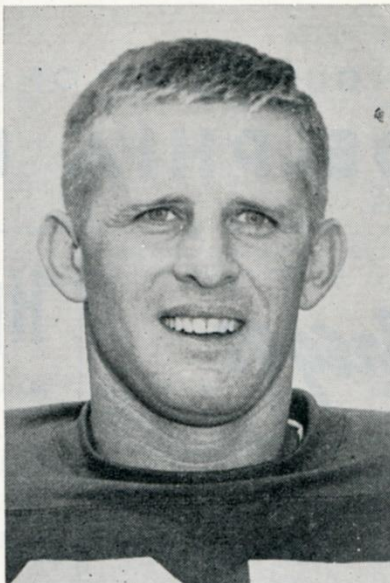
**Call PE 5-4100**

PRINTERS FOR THE PHILADELPHIA EAGLES

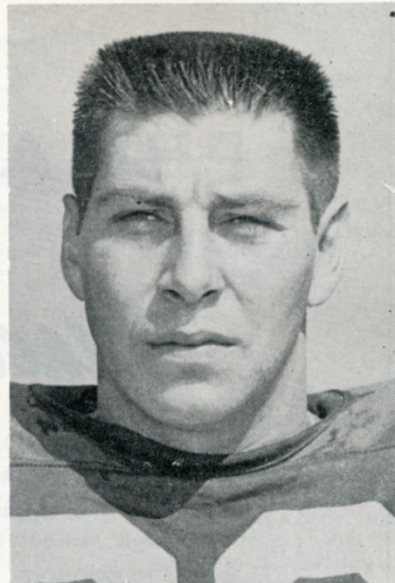
# MEET THE PHILADELPHIA EAGLES



Ken MacAfee, E



Tom McDonald, B



John Nocera, LB



Don Owens, T

Some Companies  
Have Raised Their  
Rates — But . . .

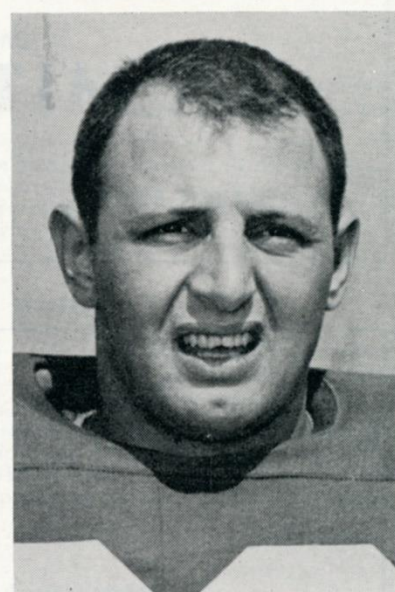
**UNIVERSAL**

**INSURED DRIVERS**

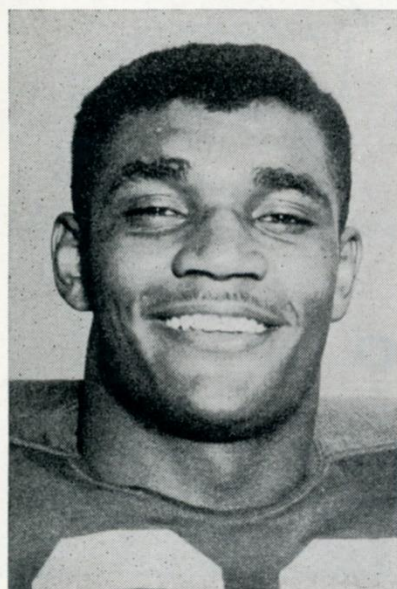
ARE STILL SAVING  
UP TO \$40 ON THEIR  
AUTO INSURANCE

**CALL EV 2-3800**

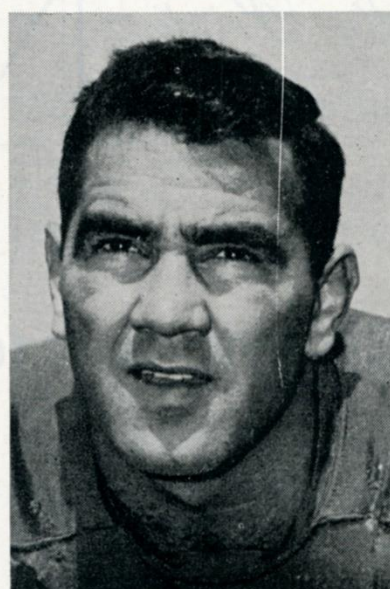
BROAD & YORK • F & ALLEGHENY  
4211 CHESTNUT  
15 E. CHELTEN AVE.



Joe Pagliei, B



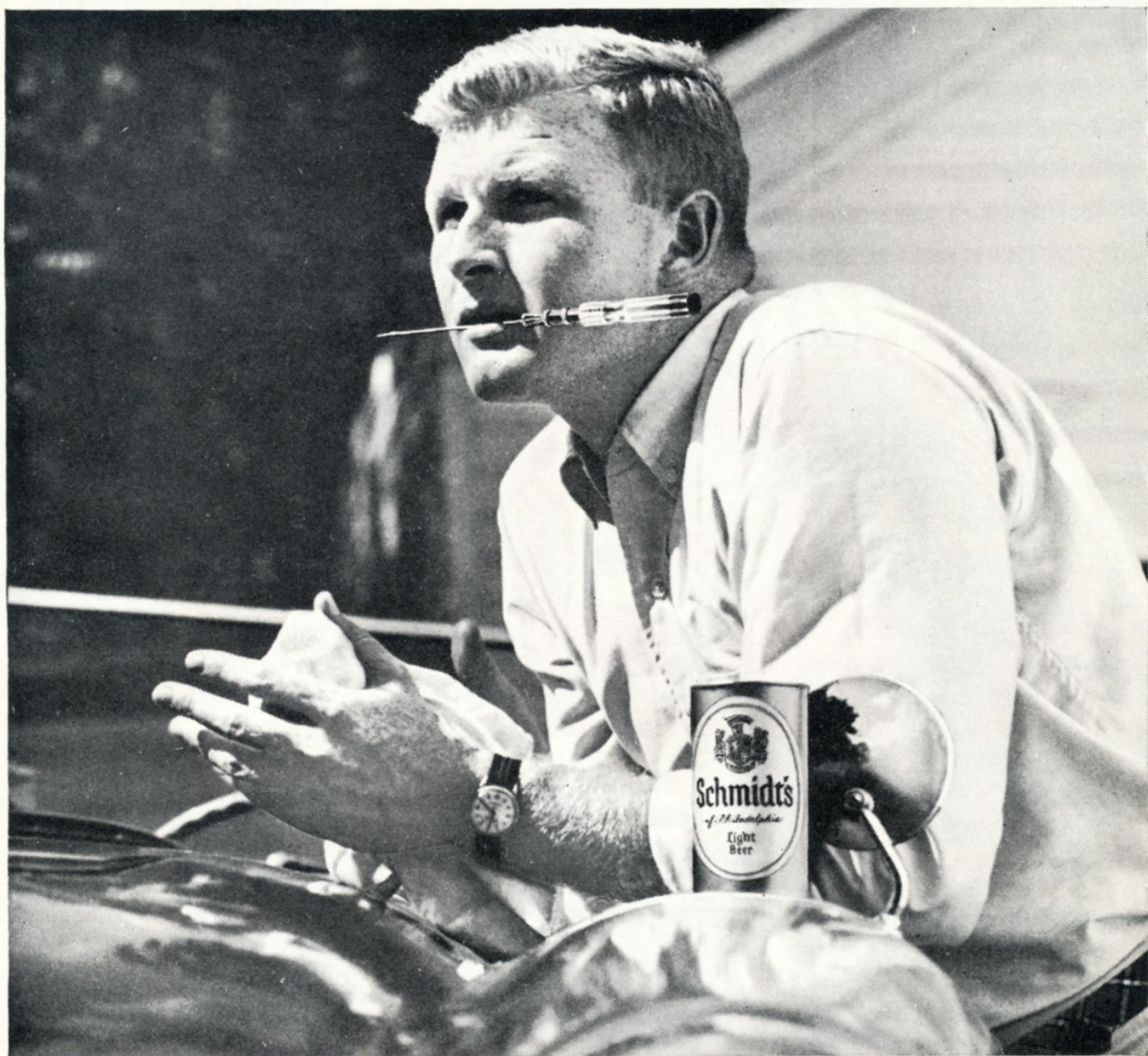
Clarence Peaks, B



Bob Pellegrini, LB



Art Powell, E



## For the 1 man in 4 who wants the beer with Full-Strength Taste

This is it, man! This is beer! Beer as beer should be—  
with *full-strength taste*. That's Schmidt's of Philadelphia.

Schmidt's has a thirst-killing bite that refreshes like  
nothing else. Roll it on your tongue . . . taste it in your  
throat . . . feel it go down. That's *full-strength taste*.

# Schmidt's *of Philadelphia*

**Beer as beer should be**

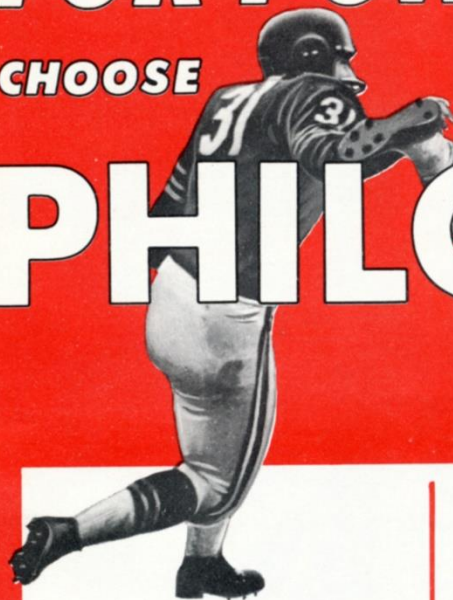


©1959,  
C. SCHMIDT & SONS,  
INC., PHILA., PA.

# FOR POWER!

CHOOSE

# PHILCO



WORLD'S MOST POWERFUL  
4-TRANSISTOR

**Portable Radio**

PHILCO T-45. Postcard sized powerhouse... outplays other 5-Transistor sets. Big set tone plus private ear speaker jack. Ivory and Terracotta or Aqua.

**\$29<sup>95</sup>**



**For Convenience!**

PHILCO TC-47. Automatic clock all-transistor portable. Wakes you to music. In beautiful tan or white leather.

**\$59<sup>95</sup>**



**For Versatility!**

PHILCO 765. All new swivel clock push-button radio. Wakes you to music. Has new Snooz Alarm for 40 extra winks. Ivory or Ebony.



**For Beauty!**

PHILCO T-60. Sleek styling and superb tone. Plays on just two penlight batteries. Unique Handle-Stand.

**\$34<sup>95</sup>**

## for STEREO SOUND

CHOOSE A PHILCO PORTABLE PLAYER



PHILCO 1413. The Aragon, Beautiful Travel-light stereo portable with lift-off stereo speaker in lid. Place the units up to 12 feet apart. Plays all the new stereo records plus all your old records with breathtaking new sound quality. Leather-like finish in rich tan or white alligator.

**\$75<sup>00</sup>**



# HIGH SCHOOL and COLLEGE STUDENTS! VOTE FOR YOUR FOOTBALL STAR OF THE MONTH!

IF HE PLAYS FOOTBALL HE'S ELIGIBLE.  
HE'LL WIN A HANDSOME SUIT FROM RIPLEY'S VAST SELECTION.



## When THE EAGLES Have The Ball

WHEN THE GIANTS HAVE THE BALL, TURN TO PAGE 22

McDonald (25)  
Powell (87)  
Walston (83)

FLANKER



Van Brocklin (11)  
Jurgensen (9)

QUARTERBACK



Kowalczyk (43)  
Paglieri (32)  
Peaks (26)

FULLBACK



Barnes (33)  
Sapp (30)

LEFT HALFBACK

Bielski (36)  
MacAfee (80)  
Wilson (88)

RIGHT END



J. D. Smith (76)  
McCusker (75)

RIGHT TACKLE



S. Campbell (67)  
Striegel (68)

RIGHT GUARD



Bednarik (60)  
Loudenback (61)

CENTER



Huth (65)  
Aschbacher (50)

LEFT GUARD



DeLucca (74)  
Owens (70)

LEFT TACKLE



Walston (83)  
Powell (87)

LEFT END



### EAGLES OFFENSIVE DEPTH

### GIANTS DEFENSIVE DEPTH



LEFT END  
Kacavage (75)  
Scott (82)



LEFT TACKLE  
Grier (76)  
Kacavage (75)



RIGHT TACKLE  
Modzelewski (77)  
Guy (60)



RIGHT END  
Robustelli (81)  
Scott (82)



LEFT  
LINEBACKER  
Livingston (89)  
Scott (82)



MIDDLE  
LINEBACKER  
Huff (70)  
Svare (84)



RIGHT  
LINEBACKER  
Svare (84)  
Scott (82)



LEFT WING  
Crow (41)  
Sutherin (26)



RIGHT WING  
Lynch (22)  
Morrison (40)

LEFT SAFETY  
Nolan (25)  
Crow (41)



RIGHT SAFETY  
Patton (20)  
Crow (41)

THE MAGIC TOUCH  
OF TRUE

Continental

styling. Ripley works magic with men's fashions and prices, too . . . brings you this season's new and flattering CONTINENTAL in the same fabulous woollens you'll find in \$100 suits . . . yet Ripley priced at just

\$ 49.95

RIPLEY HAS EVERYTHING FOR THE CAMPUS TOO! A complete line of suburban coats and zippered jackets. Many are reversible. Choose from wools, flannels, gabardines and corduroys in popular styles and shades.

Jackets from \$ 12.95



RIPLEY

IS  
HEADQUARTERS  
FOR

Mens

TOPCOATS  
OVERCOATS  
SPORTS JACKETS  
OUTER WEAR  
LEISURE WEAR  
SLACKS  
SHOES  
HATS  
HABERDASHERY

Boys

SUITS  
TOPCOATS  
OVERCOATS  
RAINCOATS  
SLACKS  
HABERDASHERY

Ripley

Tailor Made Clothes for Men & Boys

FREE ALTERATIONS

Charge It—Take 6 Mos. to Pay

All Stores Open Mon., Wed., Fri. & Sat. Eves.

3 Convenient Locations to Serve You

1215 MARKET ST.

608 SOUTH ST.

53 S. 69th ST. UPPER DARBY



# For SPORTS on TV Keep tuned to

Don't miss any of these thrilling sporting highlights which will all be telecast on WRCV-TV this coming weekend:

# 3

## FRIDAY

OCT. 9th

### BOXING—10 PM

Friday Night Fights from Madison Square Garden.

### BOWLING—10:45 PM

"JACKPOT BOWLING" with huge cash prizes.

## SATURDAY

OCT. 10th

### FOOTBALL—1:15 PM

"FOOTBALL PREVIEW" Film clips of local college games with commentary by Frank Reagan and Jim Bonner.

### FOOTBALL—1:45 PM

NCAA GAME OF THE WEEK.

### WRESTLING—4:30 PM

Professional wrestling matches.

## SUNDAY

OCT. 11th

### BOWLING—1:00 PM

"CHAMPIONSHIP BOWLING".

## EAGLES ROSTER

### EAGLES' COACHING STAFF

LAWRENCE T. "BUCK" SHAW .....Head Coach  
JERRY WILLIAMS, NICK SKORICH, CHARLEY GAUER  
and FRANK KILROY .....Assistant Coaches  
FRED SCHUBACH, SR. ....Equipment Manager  
TOM McCOY .....Trainer

| No. | Name             | Pos. | Ht.  | Wt. | Age | College            | Yr. In NFL |
|-----|------------------|------|------|-----|-----|--------------------|------------|
| 9   | Jurgensen, Sonny | QB   | 5'11 | 200 | 25  | Duke               | 3rd        |
| 11  | Van Brocklin, N. | QB   | 6'1  | 202 | 33  | Oregon             | 11th       |
| 21  | Carr, Jim        | B    | 6'2  | 198 | 23  | Morris Harvey      | 3rd        |
| 22  | Riley, Lee       | B    | 6'0  | 190 | 26  | Detroit            | 4th        |
| 25  | McDonald, Tom    | B    | 5'10 | 182 | 25  | Oklahoma           | 3rd        |
| 26  | Peaks, Clarence  | FB   | 6'1  | 220 | 24  | Michigan State     | 3rd        |
| 27  | Johnson, Gene    | B    | 6'0  | 190 | 24  | Cincinnati         | 1st        |
| 29  | Nocera, John     | B    | 6'1½ | 215 | 25  | Iowa               | 1st        |
| 30  | Sapp, Theron     | B    | 6'1  | 200 | 24  | Georgia            | 1st        |
| 32  | Pagliei, Joe     | B    | 6'0  | 220 | 25  | Clemson            | 1st        |
| 33  | Barnes, Billy    | B    | 5'11 | 202 | 24  | Wake Forest        | 3rd        |
| 36  | Bielski, Dick    | B-E  | 6'0½ | 218 | 27  | Maryland           | 5th        |
| 40  | Brookshier, Tom  | B    | 6'1  | 198 | 27  | Colorado           | 5th        |
| 43  | Kowalczyk, Walt  | B    | 6'0  | 205 | 24  | Michigan State     | 2nd        |
| 44  | Retzlaff, Pete   | B-E  | 6'1  | 209 | 28  | South Dakota State | 4th        |
| 50  | Aschbacher, D.   | E-LB | 6'1  | 215 | 24  | Oregon             | 1st        |
| 51  | Weber, Chuck     | LB   | 6'0  | 235 | 28  | W. Chester Tchrs   | 5th        |
| 53  | Pellegrini, Bob  | LB   | 6'2½ | 235 | 24  | Maryland           | 3rd        |
| 60  | Bednarik, Chuck  | C-LB | 6'3  | 235 | 34  | Pennsylvania       | 11th       |
| 61  | Louderback, Tom  | G    | 6'2  | 234 | 26  | San Jose State     | 2nd        |
| 63  | Catlin, Tom      | LB   | 6'2  | 220 | 28  | Oklahoma           | 5th        |
| 65  | Huth, Gerry      | G    | 5'11 | 210 | 26  | Wake Forest        | 2nd        |
| 66  | Robb, Joe        | LB   | 6'3  | 225 | 22  | Texas Christian    | 1st        |
| 67  | Campbell, Stan   | G    | 6'2  | 230 | 26  | Iowa State         | 6th        |
| 68  | Striegel, Bill   | G-LB | 6'2  | 230 | 23  | COP                | 1st        |
| 70  | Owens, Don       | T    | 6'5  | 255 | 24  | Miss. Southern     | 3rd        |
| 72  | Richardson, Jess | T    | 6'3  | 272 | 29  | Alabama            | 7th        |
| 73  | Khayat, Ed       | T    | 6'4  | 225 | 24  | Tulane             | 3rd        |
| 74  | DeLucca, Jerry   | T    | 6'3  | 245 | 23  | Middle Tenn.       | 1st        |
| 75  | McCusker, Jim    | T    | 6'2  | 245 | 23  | Pittsburgh         | 2nd        |
| 76  | Smith, J. D.     | T    | 6'5  | 250 | 23  | Rice               | 1st        |
| 78  | Campbell, Marion | T    | 6'3  | 250 | 30  | Georgia            | 6th        |
| 80  | MacAfee, Ken     | E    | 6'2  | 215 | 30  | Alabama            | 6th        |
| 83  | Walston, Bobby   | E    | 6'0  | 191 | 30  | Georgia            | 9th        |
| 87  | Powell, Art      | E    | 6'2½ | 200 | 22  | San Jose State     | 1st        |
| 88  | Wilson, Jerry    | E-T  | 6'3  | 240 | 22  | Auburn             | 1st        |

### OFFICIALS FOR TODAY'S GAME

Referee: GEORGE RENNIX, Minnesota  
Umpire: LOU PALAZZI, Penn State  
Head Linesman: CHARLEY BERRY, Lafayette  
Back Judge: CLEO DIEHL, Northwestern  
Field Judge: DON LOONEY, TCU

THE SPORTS  
TO SEE  
ARE ALL ON

# 3

NB

WRCV-TV

BLENDED WHISKEY. 86 PROOF. 65% GRAIN NEUTRAL SPIRITS. SEAGRAM-DISTILLERS COMPANY. NEW YORK CITY.



In a  
changing  
world

relax...and count on the pleasure of the world's most respected whiskey

say **Seagram's** and be **Sure**



# What a team!

*All made for your pleasure  
by Philip Morris Inc.*



## THE EAGLES' SQUAD

|    |                  |    |                  |    |                |
|----|------------------|----|------------------|----|----------------|
| 9  | Jurgensen, QB    | 40 | Brookshier, B    | 68 | Striegel, G-LB |
| 11 | Van Brocklin, QB | 43 | Kowalczyk, B     | 70 | Owens, T       |
| 21 | Carr, B          | 44 | Retzlaff, B-E    | 72 | Richardson, T  |
| 22 | Riley, B         | 50 | Aschbacher, E-LB | 73 | Khayat, T      |
| 25 | McDonald, B      | 51 | Weber, LB        | 75 | McCusker, T    |
| 26 | Peaks, FB        | 53 | Pellegrini, LB   | 76 | Smith, T       |
| 27 | Johnson, B       | 60 | Bednarik, C-LB   | 78 | M. Campbell, T |
| 29 | Nocera, B        | 61 | Louderback, G    | 80 | MacAfee, E     |
| 30 | Sapp, B          | 63 | Catlin, LB       | 83 | Walston, E     |
| 32 | Pagliei, B       | 65 | Huth, G          | 87 | Powell, E      |
| 33 | Barnes, B        | 66 | Robb, LB         | 88 | Wilson, E-T    |
| 36 | Bielski, B-E     | 67 | S. Campbell, G   |    |                |

## EAGLES

### PROBABLE STARTING LINEUP

| No. | Name                | Position |
|-----|---------------------|----------|
| 83  | BOBBY WALSTON       | LE       |
| 74  | JERRY DeLUCCA       | LT       |
| 65  | GERRY HUTH          | LG       |
| 60  | CHUCK BEDNARIK      | C        |
| 67  | STAN CAMPBELL       | RG       |
| 76  | J. D. SMITH         | RT       |
| 36  | DICK BIELSKI        | RE       |
| 11  | NORMAN VAN BROCKLIN | QB       |
| 33  | BILLY BARNES        | LH       |
| 25  | TOM McDONALD        | FL       |
| 43  | WALT KOWALCZYK      | FB       |

All of the Eagles away games are brought to you by MARLBORO. Check your newspaper for time and channel.



# GIANTS

## PROBABLE STARTING LINEUP

| No. | Name            | Position |
|-----|-----------------|----------|
| 44  | KYLE ROTE       | LE       |
| 79  | ROOSEVELT BROWN | LT       |
| 68  | AL BARRY        | LG       |
| 55  | RAY WIETecha    | C        |
| 66  | JACK STROUD     | RG       |
| 72  | FRANK YOUSO     | RT       |
| 85  | BOB SCHNELKER   | RE       |
| 42  | CHARLIE CONERLY | QB       |
| 16  | FRANK GIFFORD   | LH       |
| 29  | ALEX WEBSTER    | FL       |
| 33  | MEL TRIPLETT    | FB       |

## THE GIANTS' SQUAD

|    |              |    |              |    |                |
|----|--------------|----|--------------|----|----------------|
| 11 | Heinrich, QB | 40 | Morrison, HB | 75 | Katcavage, E   |
| 15 | Shaw, QB     | 41 | Crow, HB     | 76 | Grier, T       |
| 16 | Gifford, HB  | 42 | Conerly, QB  | 77 | Modzelewski, T |
| 20 | Patton, HB   | 44 | Rote, E      | 78 | Schmidt, T     |
| 22 | Lynch, HB    | 55 | Wietecha, C  | 79 | Brown, T       |
| 24 | King, HB     | 60 | Guy, G       | 80 | Biscaha, E     |
| 25 | Nolan, HB    | 62 | Dess, G      | 81 | Robustelli, E  |
| 26 | Sutherin, HB | 66 | Stroud, T    | 82 | Scott, LB      |
| 29 | Webster, HB  | 68 | Barry, G     | 84 | Svare, LB      |
| 31 | Scott, HB    | 70 | Huff, LB     | 85 | Schnelker, E   |
| 33 | Triplett, FB | 71 | Kelly, G     | 88 | Summerall, E   |
| 34 | Chandler, HB | 72 | Youso, T     | 89 | Livingston, LB |

All of the Eagles away games are brought to you by MARLBORO. Check your newspaper for time and channel.

# BE REALLY REFRESHED



## EAGLES' FIVE YEAR RECORD VS 1959 HOME OPPONENTS

### NEW YORK GIANTS

| Eagles |      | Opponent |
|--------|------|----------|
| 14     | 1954 | 27       |
| 29     |      | 14       |
| 27     | 1955 | 17       |
| 7      |      | 31       |
| 3      | 1956 | 20       |
| 7      |      | 21       |
| 20     | 1957 | 24       |
| 0      |      | 13       |
| 27     | 1958 | 24       |
| 10     |      | 24       |

### PITTSBURGH STEELERS

| Eagles |      | Opponent |
|--------|------|----------|
| 24     | 1954 | 22       |
| 7      |      | 17       |
| 7      | 1955 | 13       |
| 24     |      | 0        |
| 35     | 1956 | 21       |
| 14     |      | 7        |
| 0      | 1957 | 6        |
| 7      |      | 6        |
| 3      | 1958 | 24       |
| 24     |      | 31       |

### WASHINGTON REDSKINS

| Eagles |      | Opponent |
|--------|------|----------|
| 49     | 1954 | 21       |
| 41     |      | 33       |
| 30     | 1955 | 31       |
| 21     |      | 34       |
| 13     | 1956 | 9        |
| 17     |      | 19       |
| 21     | 1957 | 12       |
| 7      |      | 42       |
| 14     | 1958 | 24       |
| 0      |      | 20       |

### CHICAGO CARDINALS

| Eagles |      | Opponent |
|--------|------|----------|
| 35     | 1954 | 16       |
| 30     |      | 14       |
| 24     | 1955 | 24       |
| 27     |      | 3        |
| 6      | 1956 | 20       |
| 17     |      | 28       |
| 38     | 1957 | 21       |
| 27     |      | 31       |
| 21     | 1958 | 21       |
| 49     |      | 21       |

### LOS ANGELES RAMS

| Eagles |      | Opponent |
|--------|------|----------|
| 14     | 1949 | 0        |
| 56     | 1950 | 20       |
| 21     | 1955 | 23       |
| 7      | 1956 | 27       |
| 13     | 1957 | 17       |

### CLEVELAND BROWNS

| Eagles |      | Opponent |
|--------|------|----------|
| 28     | 1954 | 10       |
| 0      |      | 6        |
| 17     | 1955 | 21       |
| 33     |      | 17       |
| 0      | 1956 | 16       |
| 14     |      | 17       |
| 7      | 1957 | 24       |
| 17     |      | 7        |
| 14     | 1958 | 28       |
| 14     |      | 21       |



COCA-COLA AND CONE ARE REGISTERED TRADEMARKS

THE PHILADELPHIA COCA-COLA BOTTLING COMPANY  
PHILADELPHIA, PENNSYLVANIA

## GIANTS ROSTER

### GIANTS' COACHING STAFF

JIM LEE HOWELL .....Head Coach

AL SHERMAN, JOHN DELL ISOLA,  
KEN KAVANAUGH, TOM LANDRY .....Assistant Coaches

| No. | Name              | Pos. | Ht.  | Wt. | Age | College           | Yr. In NFL |
|-----|-------------------|------|------|-----|-----|-------------------|------------|
| 11  | Heinrich, Don     | QB   | 6'0  | 180 | 28  | Washington        | 6th        |
| 15  | Shaw, George      | QB   | 6'0  | 180 | 26  | Oregon            | 5th        |
| 16  | Gifford, Frank    | QB   | 6'1  | 205 | 29  | U.S.C.            | 8th        |
| 20  | Patton, Jim       | HB   | 5'10 | 180 | 27  | Mississippi       | 5th        |
| 22  | Lynch, Dick       | HB   | 6'1  | 200 | 23  | Notre Dame        | 2nd        |
| 24  | King, Phil        | HB   | 6'4  | 225 | 23  | Vanderbilt        | 2nd        |
| 25  | Nolan, Dick       | HB   | 6'1  | 185 | 27  | Maryland          | 6th        |
| 26  | Sutherin, Don     | HB   | 6'0  | 205 | 23  | Ohio State        | 1st        |
| 29  | Webster, Alex     | HB   | 6'3  | 225 | 28  | N. Carolina State | 5th        |
| 31  | Scott, George     | HB   | 6'1  | 180 | 21  | Miami of Ohio     | 1st        |
| 33  | Triplet, Mel      | FB   | 6'1  | 215 | 27  | Toledo            | 5th        |
| 34  | Chandler, Don     | HB   | 6'2  | 205 | 24  | Florida           | 4th        |
| 40  | Morrison, Joe     | HB   | 6'1  | 194 | 21  | Cincinnati        | 1st        |
| 41  | Crow, Lindon      | HB   | 6'1  | 200 | 26  | U.S.C.            | 5th        |
| 42  | Conerly, Charlie  | QB   | 6'1  | 185 | 38  | Mississippi       | 12th       |
| 44  | Rote, Kyle        | E    | 6'0  | 200 | 31  | S.M.U.            | 9th        |
| 55  | Wietecha, Ray     | C    | 6'1  | 225 | 30  | Northwestern      | 7th        |
| 60  | Guy, Buzz         | G    | 6'3  | 248 | 24  | Duke              | 2nd        |
| 62  | Dess, Darrell     | G    | 6'0  | 235 | 24  | N. Carolina State | 2nd        |
| 66  | Stroud, Jack      | T    | 6'1  | 235 | 30  | Minnesota         | 7th        |
| 68  | Barry, Al         | G    | 6'2  | 230 | 27  | U.S.C.            | 4th        |
| 70  | Huff, Sam         | LB   | 6'1  | 230 | 24  | West Virginia     | 4th        |
| 71  | Kelly, Ellison    | G    | 6'1  | 231 | 23  | Michigan State    | 1st        |
| 72  | Youso, Frank      | T    | 6'4  | 260 | 23  | Minnesota         | 2nd        |
| 75  | Katcavage, Jim    | E    | 6'3  | 230 | 24  | Dayton            | 4th        |
| 76  | Grier, Rosey      | T    | 6'5  | 285 | 26  | Penn State        | 4th        |
| 77  | Modzelewski, Dick | T    | 6'0  | 260 | 28  | Maryland          | 7th        |
| 78  | Schmidt, Bob      | T    | 6'4  | 245 | 23  | Minnesota         | 2nd        |
| 79  | Brown, Rosey      | T    | 6'3  | 245 | 26  | Morgan State      | 7th        |
| 80  | Biscaha, Joe      | E    | 6'1  | 190 | 22  | Richmond          | 1st        |
| 81  | Robustelli, Andy  | E    | 6'1  | 230 | 31  | Arnold            | 9th        |
| 82  | Scott, Tom        | LB   | 6'2  | 220 | 29  | Virginia          | 7th        |
| 84  | Svare, Harland    | LB   | 6'0  | 214 | 28  | Washington State  | 7th        |
| 85  | Schnelker, Bob    | E    | 6'4  | 215 | 29  | Bowling Green     | 7th        |
| 88  | Summerall, Pat    | E    | 6'4  | 235 | 29  | Arkansas          | 8th        |
| 89  | Livingston, Cliff | LB   | 6'3  | 215 | 29  | U.C.L.A.          | 6th        |

## HALFTIME ENTERTAINMENT

October 4—Franklin Field

THE CABELLEROS OF HAWTHORNE, N. J.



## For SPORTS on TV Keep tuned to

Don't miss any of these thrilling sporting highlights which will all be telecast on WRCV-TV this coming weekend:

# 3

## FRIDAY

OCT. 9th

### BOXING—10 PM

Friday Night Fights from Madison Square Garden.

### BOWLING—10:45 PM

"JACKPOT BOWLING" with huge cash prizes.

## SATURDAY

OCT. 10th

### FOOTBALL—1:15 PM

VIEW" Film clips of local college games with commentary by Frank Reagan and Jim Bonner.

### FOOTBALL—1:45 PM

NCAA GAME OF THE WEEK.

### WRESTLING—4:30 PM

Professional wrestling matches.

## SUNDAY

OCT. 11th

### BOWLING—1:00 PM

"CHAMPIONSHIP BOWLING".



THE SPORTS  
TO SEE  
ARE ALL ON

# 3

NBC

WRCV-TV

# HIGH SCHOOL and COLLEGE STUDENTS! VOTE FOR YOUR FOOTBALL STAR OF THE MONTH!

IF HE PLAYS FOOTBALL HE'S ELIGIBLE.  
HE'LL WIN A HANDSOME SUIT FROM RIPLEY'S VAST SELECTION.



## When THE GIANTS Have The Ball

WHEN THE EAGLES HAVE THE BALL, TURN TO PAGE 15

Webster (29)  
Scott (31)  
Chandler (34)

FLANKER



Conerly (42)  
Heinrich (11)  
Shaw (15)

QUARTERBACK



Triplett (33)  
King (24)  
Webster (29)

FULLBACK



Gifford (16)  
Morrison (40)  
Chandler (34)

LEFT HALFBACK

Schnelker (85)  
Biscaha (80)  
Summerall (88)

RIGHT END



Youso (72)  
Guy (60)  
Stroud (66)

RIGHT TACKLE



Stroud (66)  
Dess (62)

RIGHT GUARD



Wietecha (55)  
Schmidt (78)

CENTER



Barry (68)  
Kelly (71)

LEFT GUARD



Brown (79)  
Schmidt (78)

LEFT TACKLE



Rote (44)  
Biscaha (80)

LEFT END



### GIANTS OFFENSIVE DEPTH

### EAGLES DEFENSIVE DEPTH



LEFT END  
Khayat (73)  
Robb (66)



LEFT TACKLE  
Richardson (72)  
M. Campbell (78)



RIGHT TACKLE  
Owens (70)  
M. Campbell (78)



RIGHT END  
M. Campbell (78)  
Khayat (73)



LEFT  
LINEBACKER  
Catlin (23)  
Nocera (29)  
Striegel (68)



RIGHT  
LINEBACKER  
Pellegrini (53)  
Catlin (63)



MIDDLE  
LINEBACKER  
Weber (51)  
Louderback (61)



LEFT WING  
Johnson (27)  
Carr (21)

RIGHT WING  
Brookshier (40)  
Riley (22)



LEFT SAFETY  
Carr (21)  
Powell (87)



RIGHT SAFETY  
Riley (22)  
Powell (87)

THE MAGIC TOUCH  
OF TRUE

Continental

styling. Ripley works magic with men's fashions and prices, too . . . brings you this season's new and flattering CONTINENTAL in the same fabulous woollens you'll find in \$100 suits . . . yet Ripley priced at just

\$ 49.95

RIPLEY HAS EVERYTHING FOR THE CAMPUS TOO! A complete line of suburban coats and zippered jackets. Many are reversible. Choose from wools, flannels, gabardines and corduroys in popular styles and shades.

Jackets \$ 12.95 from



RIPLEY

IS  
HEADQUARTERS  
FOR

Mens

TOPCOATS  
OVERCOATS  
SPORTS JACKETS  
OUTER WEAR  
LEISURE WEAR  
SLACKS  
SHOES  
HATS  
HABERDASHERY

Boys

SUITS  
TOPCOATS  
OVERCOATS  
RAINCOATS  
SLACKS  
HABERDASHERY

Ripley

Tailor Made Clothes for Men & Boys

FREE ALTERATIONS

Charge It—Take 6 Mos. to Pay

All Stores Open Mon., Wed., Fri. & Sat. Eves.

3 Convenient Locations to Serve You

1215 MARKET ST.

608 SOUTH ST.

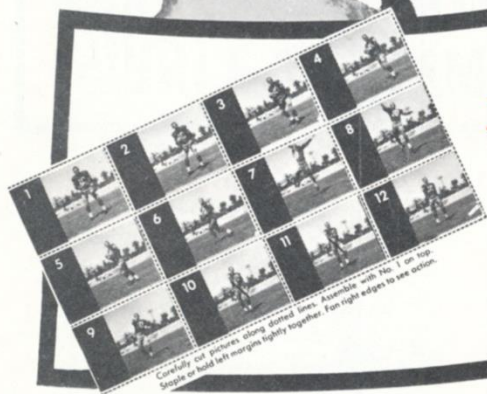
53 S. 69th ST. UPPER DARBY

Favorite of the Eagles...a winner with fans big and small

# San Giorgio FOR "PRO-POWER" ENERGY



**FREE ACTION PHOTOS**  
of pro stars in every  
San Giorgio Noodles package.  
The youngsters will go for these!



For "PRO-POWER" Energy and great eating you can't beat flavor-rich dishes made with top quality San Giorgio.

San Giorgio Macaroni Products taste better because they're made better...to cook up firm, not mushy. Man, San Giorgio is he-man food!

Sold at leading food stores

SAN GIORGIO MACARONI, INC., LEBANON, PA.

Get behind this winning team... San Giorgio thin Spaghetti topped with San Giorgio's special sauce. It's slow-simmered the old-time country kitchen way to blend all the savory ingredients. Delicious!



# Anytime...Any Occasion

*Serve*

## OL'SMOKEY

All Meat

# FRANKFURTERS



AT HOME... AND  
AT FRANKLIN FIELD

PICK UP **OL' SMOKEY** FRANKFURTERS...  
at your favorite Food Market

ROYALIST PROVISION CO., INC., PHILA., PA.

## INTERNATIONAL TRUCKS

SCORE  
AGAIN!

with the "WORLDS MOST COMPLETE LINE"



Multi-Million-Mile diesels.

NO OTHER LINE OFFERS SO MANY MODELS

from the  
**LARGEST DIESEL**  
to the  
**SMALLEST PICKUP**



... have a **JOB** for a **TRUCK**?

We have the **RIGHT TRUCK** for the **JOB**!

See them now at the  
International Branch  
nearest you.

- 660 East Erie Ave.  
Phila. 34, Pa.
- 4500 Woodland Ave.  
Phila. 43, Pa.

- 728 Union Blvd.  
Allentown, Pa.
- North 5th & Richmond Sts.  
Reading, Penna.
- Kaighn Ave. & Crescent Blvd.  
Camden, N. J.

- 128 Nineteenth Ave.  
Paterson, N. J.
- 2058 Brunswick Ave.  
Trenton 8, N. J.

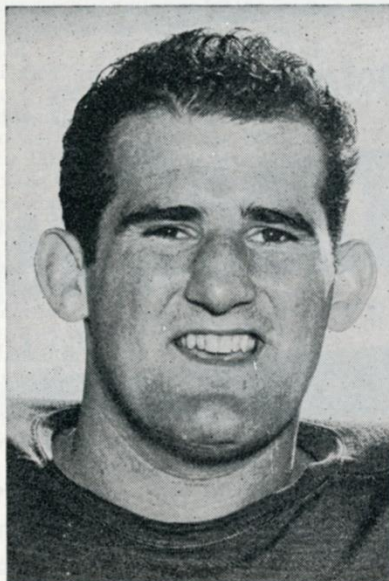
Ask for Your "Free" Copy  
IH Football Sportsfolio



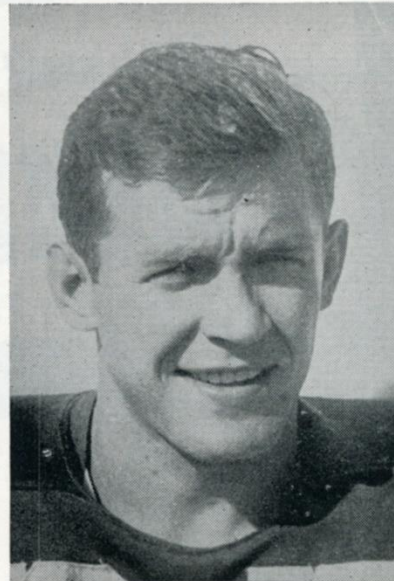
# MEET THE PHILADELPHIA EAGLES



Pete Retzlaff, E



Jess Richardson, T



Lee Riley, B



Theron Sapp, B

**SERVICE**

made us grow!

If you need service  
today, call

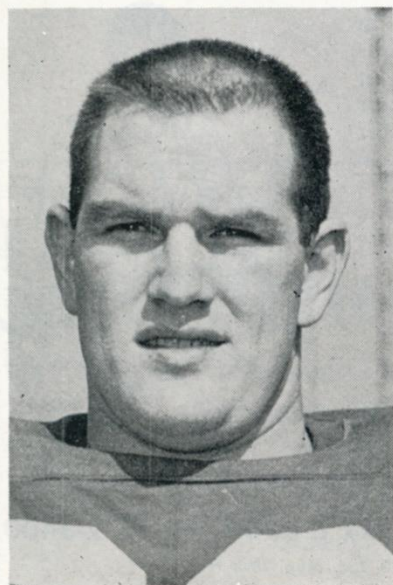
**"THE GENERAL"**

---

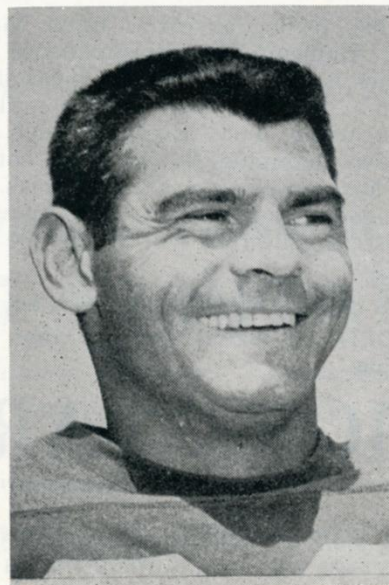
**GENERAL**  
COPPER & BRASS CO.  
POST OFFICE BOX 5353  
PHILADELPHIA, PA.



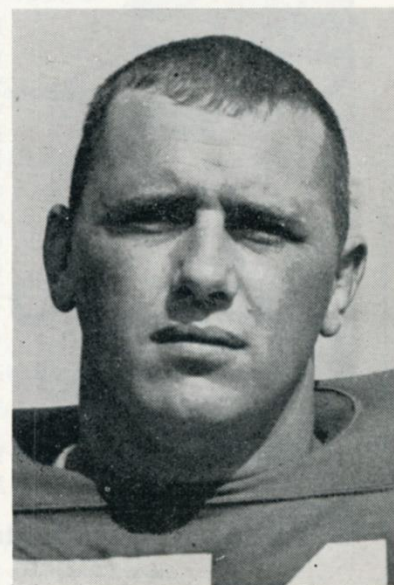
J. D. Smith, T



Bill Striegel, G



Bobby Walston, E



Chuck Weber, LB



**Norman Van Brocklin, QB**

Position: Quarterback  
Born: March 15, 1926  
Height: 6'1  
College: Oregon  
\*Year Eagle: 2nd  
Residence: Wayne, Pa.

Dutch . . . one of National League's all-time greats as passer and punter . . . excellent play caller and team leader . . . secured from Los Angeles Rams in "most celebrated winter trade of 1958" . . . played nine years with Rams before joining Eagles . . . holds NFL record for yards gained passing one game: 554 against New York in 1951 . . . lifetime (10 years) percentage of passes completed is .532 . . . career punting average for 410 punts is 42.9 . . . NFL's top man in passing in 1950, 1952 and 1954 . . . led all punters in 1955 and 1956 . . . in ten notable seasons as one of the finest pro athletes extant has completed 1,209 passes in 2,271 attempts for 18,523 yards and 133 touchdowns . . . in 10 seasons has averaged 227 attempts, 121 completions, 1,852 yards and 13 touchdowns per year . . . first year with Eagles (1958) set club record for passing attempts, 374, and completions, 198 . . . his 1958 attempts and completions led NFL . . . threw 91-yarder to McDonald vs. New York on October 5 for his longest career pass . . . played in seven of the nine Pro Bowl Games in Los Angeles, quarterbacked East to 28-21 victory in 1959 Pro Bowl . . . extremely popular with players . . . "a pleasure to coach," says Buck Shaw . . . assists in Eagles' public relations department in off season . . . has established residence in Philadelphia area . . . attended Acalanes High School in Walnut Creek (Calif.), served two years in the Navy and then enrolled at University of Oregon where as junior was named All-America, leading his team to an unbeaten season in Conference play . . . wife, Gloria, former member of Oregon faculty . . . they have three daughters, Karen, Lynn and Judy.

\*Played nine seasons with Los Angeles (1949-57).

**Van Brocklin's Career Record**

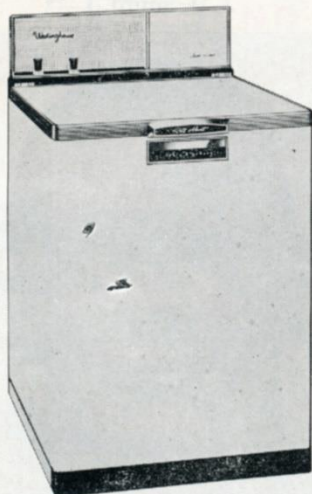
| Passing |       |       |      |        |      |      | Punting     |     |      |             |
|---------|-------|-------|------|--------|------|------|-------------|-----|------|-------------|
| Year    | Atts. | Comp. | Int. | Yds.   | Pct. | Tds. | Pos. League | No. | Av.  | Pos. League |
| 1949    | 58    | 32    | 2    | 601    | .532 | 6    | 7th         | 2   | 45.5 | 22nd        |
| 1950    | 233   | 127   | 14   | 2061   | .546 | 18   | 1st         | 11  | 42.4 | 20th        |
| 1951    | 194   | 100   | 11   | 1725   | .514 | 13   | 2d          | 48  | 41.5 | 4th         |
| 1952    | 205   | 113   | 17   | 1736   | .552 | 14   | 1st         | 29  | 43.1 | 4th         |
| 1953    | 286   | 156   | 14   | 2393   | .546 | 19   | 2d          | 60  | 42.2 | 6th         |
| 1954    | 260   | 139   | 21   | 2637   | .535 | 13   | 1st         | 44  | 42.6 | 3rd         |
| 1955    | 272   | 144   | 15   | 1890   | .530 | 8    | 6th         | 60  | 44.6 | 1st         |
| 1956    | 124   | 68    | 12   | 966    | .548 | 7    | 4th         | 48  | 43.1 | 1st         |
| 1957    | 265   | 132   | 21   | 2105   | .498 | 20   | 4th         | 54  | 44.3 | 2nd         |
| 1958    | 374   | 198   | 20   | 2409   | .529 | 15   | 13th        | 54  | 41.0 | 8th         |
| Totals  | 2271  | 1209  | 147  | 18,523 | .532 | 133  |             | 410 | 42.9 |             |



**Mort Farr says:**

***Don't Be A Dishwasher — Buy One!***

You can own the new **WESTINGHOUSE IMPERIAL ROLL ABOUT DISHWASHER** for just 25¢ a day



It's like having an extra "hired hand" in your kitchen! The Westinghouse Dishwasher is the only one that heats its own water . . . doesn't start washing until water is steaming hot. Exclusive hot water booster guarantees 140 degrees hot wash and final rinse water . . . You wash dishes cleaner and faster. Plan ahead now for a Christmas gift that will please the whole family!

- **NO INSTALLATION COST**—rolls anywhere.
- **PORTABLE**—take it with you when you move.



**MORT FARR**

Champion Brand Name Retailer • Farr Better Service For Over 35 Years

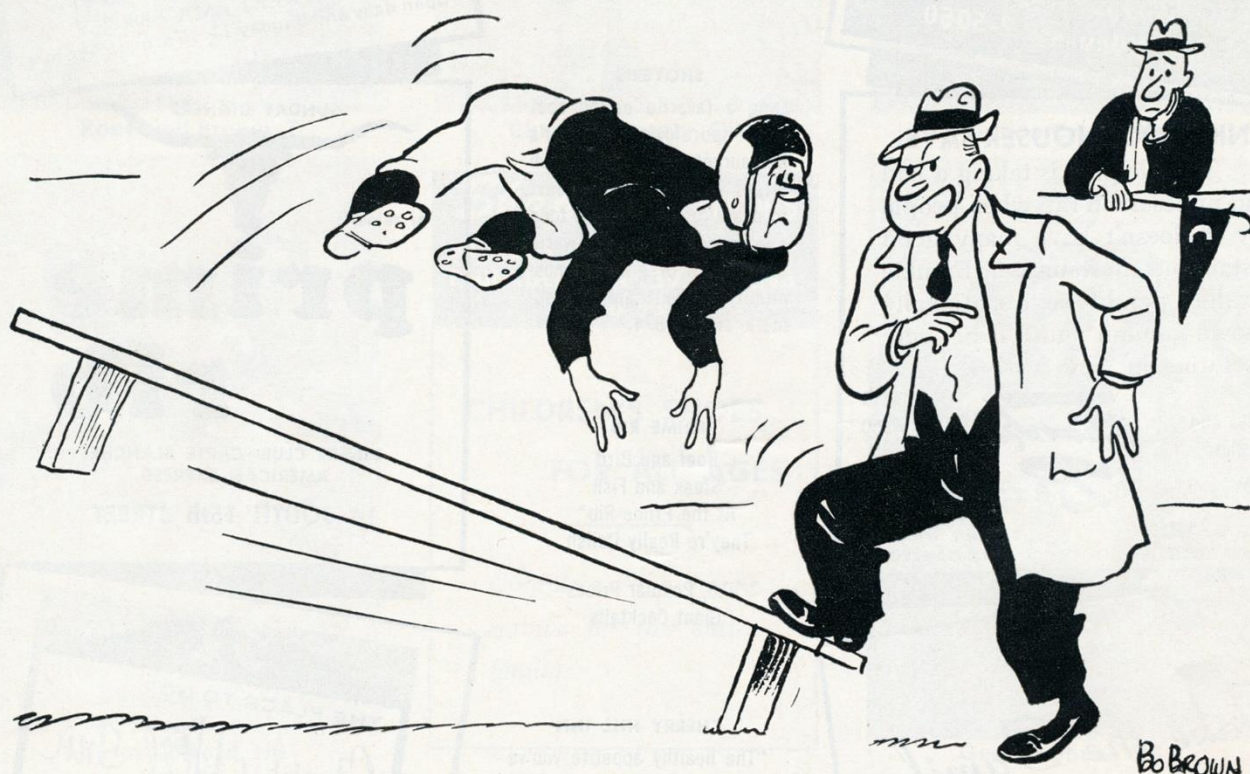
**69th St. below Chestnut, Upper Darby, Pa. Phone: GR 6-6060 • FL 2-3400**

Hear "Something to Say" with Taylor Grant on WIP at 6:10 and 11:10 P.M. Mon. thru Fri.

World Famous for Seafood Since 1865!

# OLD ORIGINAL BOOKBINDER'S

125 WALNUT STREET • Philadelphia



'Okay, Williams—I'm going to give you your big chance!'

"LET'S GO PHILADELPHIA"

## HYGIENIC SANITATION CO.

Philadelphia, Harrisburg, Johnstown, Altoona and Pittsburgh, Pa.  
 Washington, D. C.; Baltimore, Cumberland, and Salisbury, Maryland;  
 Rochester and Olean, N. Y.; Louisville, Ky.;  
 Camden and Trenton, N. J.

LARGEST EXTERMINATING ORGANIZATION IN THE EAST

# After the Game

**Cinelli's COUNTRY HOUSE**  
Across from Garden State Park  
where Rt 38 and Haddonfield Road  
meet at Circle—South Haddonfield, N. J.



**INTERNATIONAL CUISINE**

**Cocktail Lounge**

OPEN SUNDAY 1:00 P. M. to 3:00 A. M.  
phone **NO**RMANDY 2-5050

## FRANK BROOKHOUSER SAYS:

"... Philadelphia is taking a bad and undeserved rap when people say it doesn't have many good restaurants. Restaurateur Frankie Bradley would be a nationally known column figure if he were operating in New York..."

Open  
Sundays and  
Before and  
After the  
Theatre  
HOME OF THE  
SHOW FOLK

**Frankie Bradley's**

BEHIND THE OLD  
RITZ-CARLTON

KI 5  
4350

*Take the Family  
out to  
Dinner*



## CINELLI'S

Established 1909

Our food has attracted patronage from all sections of the Eastern Seaboard and has justly earned the reputation:

"On the Jersey side, it's Cinelli's"

Members—Diners Club,  
American Express Co.

## SHOYER'S

Long a favorite eating spot with sport-lovers, Shoyer's Restaurant at 412 Arch Street is famed from coast to coast for its gourmet food... served in an old-world atmosphere of gracious hospitality. A Philadelphia landmark since 1874.

## PRIME RIB

Beef and Bird  
Steak and Fish  
At the Prime Rib\*  
They're Really Delish.

\*P.S. Popular Prices  
Giant Cocktails

## CHERRY HILL INN

"The healthy appetite you've worked up at the game will find the utmost satisfaction at Cherry Hill Inn, Route 38 at Haddonfield, N. J. Generous sized drinks too and all at a mighty modest price. You'll love the good fellowship in the robust atmosphere of this Country Inn where Eagle fans and the players head after the game."

Top off your Sunday pleasure with a delectable dinner at the Gourmet's Rendezvous

Every dish from meat to fish is a specialty of the house!

**SHOYER'S**

RESTAURANT • SINCE 1874  
412 ARCH STREET • MA 7-8800  
Open daily and Sunday 11:30 a.m. to 9 p.m.



## SUNDAY DINNERS

al reiner's

**prime rib**

DINERS CLUB—CARTE BLANCHE  
AMERICAN EXPRESS

14 SOUTH 15th STREET

THE PLACE TO GO!

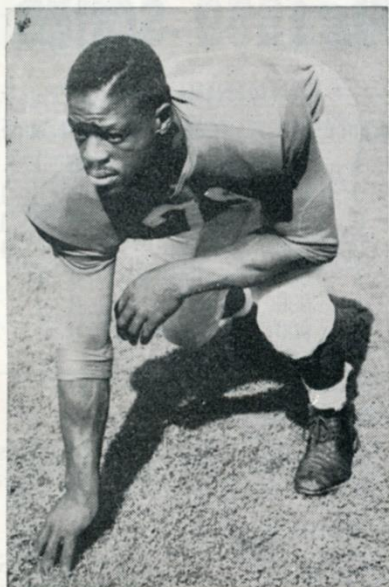
**Cherry Hill Inn**

N. J. Rt. 38 at Haddonfield Rd.  
NEAR HADDONFIELD, N. J.  
• Fabulous Food • Cocktail Lounge  
and Bar • Parking for 600 Cars •  
Just a few minutes from downtown  
Philadelphia via Benjamin Franklin  
Bridge, then follow N. J. Turnpike  
signs on Rt. 38—4 miles.  
F. R. Clausen, General Manager  
NOrmandy 2-7200  
"A New Idea in Old Fashioned Hospitality"



**Between Halves... Phone in Your Reservations**

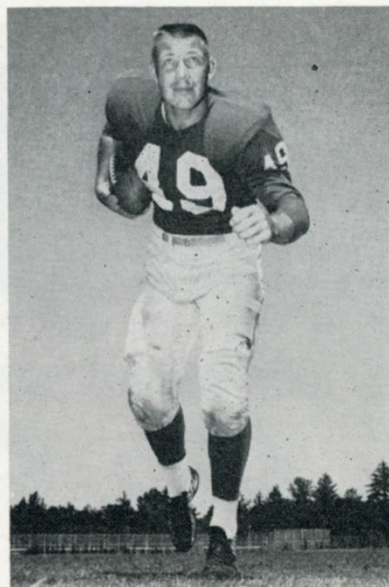
# TODAY — WATCH THESE GIANTS IN ACTION



Roosevelt Brown, T



Charley Conerly, QB



Lindon Crow, HB



Frank Gifford, HB

## *Shapiro's* SHOES

213-215 SOUTH 52nd ST.  
PHILADELPHIA 39, PENNA.  
GR 6-5323

### CHILDREN'S SHOES FOR ALL AGES

*Complete shoe repair  
service for the entire  
family.*



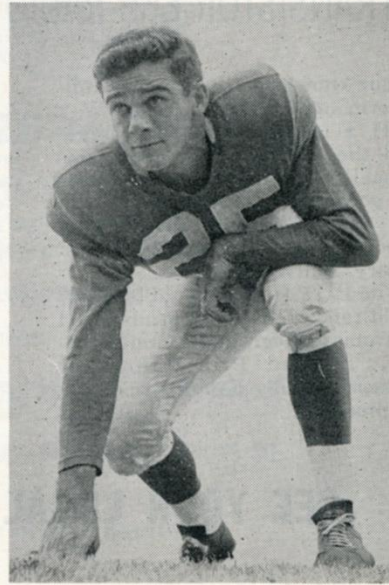
George Shaw, QB



Sam Huff, LB



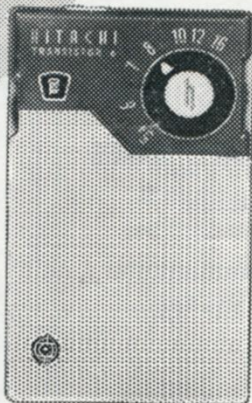
Jim Katcavage, E



Dick Nolan, HB



look at the  
size of it!



the incredible  
**TRANSISTOR 666 RADIO by HITACHI**

To our knowledge the smallest full-performance radio made ( $2\frac{3}{4}$ W x  $3\frac{1}{4}$ H x  $1\frac{1}{2}$ D). Though no larger than the palm of your hand, this Hitachi 666, with its 6 transistors and powerful dynamic speaker, is a giant in performance . . . operates indoors or out on a single, standard battery. Fully guaranteed.

Who BUT Hitachi could build it? World-renowned leaders in advanced electronics design and manufacturing . . . Grand Prix Winner at Brussels World's Fair for scientific equipment.

Shockproof case in fashion-accent color combinations: Red-grey, pearl-white, black-gold. Personal-listening earphone included.

**39.95**

**SEE YOUR LOCAL DEALER**

# NFL 1959 SCHEDULE

## STANDINGS

| Eastern Conference |   |       |                   | Western Conference |       |   |       |
|--------------------|---|-------|-------------------|--------------------|-------|---|-------|
|                    | W | L     | Pct.              |                    | W     | L | Pct.  |
| New York .....     | 1 | 0     | 1.000             | Green Bay .....    | 1     | 0 | 1.000 |
| Chicago Cards ..1  | 0 | 1.000 | San Francisco ..1 | 0                  | 1.000 |   |       |
| Pittsburgh .....   | 1 | 0     | 1.000             | Baltimore .....    | 1     | 0 | 1.000 |
| Eagles .....       | 0 | 1     | .000              | Los Angeles .....  | 0     | 1 | .000  |
| Washington .....   | 0 | 1     | .000              | Detroit .....      | 0     | 1 | .000  |
| Cleveland .....    | 0 | 1     | .000              | Chicago Bears ..0  | 1     | 1 | .000  |

### SATURDAY, SEPTEMBER 26

New York Giants 23 ..... Los Angeles Rams 21  
Pittsburgh Steelers 17 ..... Cleveland Browns 7

### SUNDAY, SEPTEMBER 27

**SAN FRANCISCO 24 ..... EAGLES 14**  
Baltimore 21 ..... Detroit 9  
Green Bay 9 ..... Chicago Bears 6  
Chicago Cards 49 ..... Washington Redskins 21

### SATURDAY NITE, OCTOBER 3

Chicago Bears at Baltimore

### SUNDAY, OCTOBER 4

**NEW YORK at EAGLES**  
Cleveland at Chicago Cards  
Detroit at Green Bay  
Los Angeles at San Francisco  
Washington at Pittsburgh

### SUNDAY, OCTOBER 11

**PITTSBURGH at EAGLES**  
Baltimore at Detroit  
Chicago Cards at Washington  
Los Angeles at Chicago Bears  
New York at Cleveland  
San Francisco at Green Bay

### SUNDAY, OCTOBER 18

**EAGLES at NEW YORK**  
Baltimore at Chicago Bears  
Chicago Cards at Cleveland  
Los Angeles vs. Green Bay at Milwaukee  
Pittsburgh at Washington  
San Francisco at Detroit

### SUNDAY, OCTOBER 25

**EAGLES vs. CHICAGO CARDS**  
**at Minneapolis**  
Chicago Bears at San Francisco  
Detroit at Los Angeles  
Green Bay at Baltimore  
New York at Pittsburgh  
Washington at Cleveland

### SUNDAY, NOVEMBER 1

**WASHINGTON at EAGLES**  
Chicago Bears at Los Angeles  
Cleveland at Baltimore  
Detroit at San Francisco  
Green Bay at New York  
Pittsburgh at Chicago Cards

# RESULTS — STANDING

## SUNDAY, NOVEMBER 8

EAGLES at CLEVELAND  
 Baltimore at Washington  
 Chicago Cards at New York  
 Detroit at Pittsburgh  
 Green Bay at Chicago Bears  
 San Francisco at Los Angeles

## SUNDAY, NOVEMBER 15

CHICAGO CARDS at EAGLES  
 Baltimore vs. Green Bay at Milwaukee  
 Cleveland at Washington  
 Los Angeles at Detroit  
 Pittsburgh at New York  
 San Francisco at Chicago Bears

## SUNDAY, NOVEMBER 22

LOS ANGELES at EAGLES  
 Chicago Bears at Detroit  
 New York vs. Chicago Cards at Minneapolis  
 Pittsburgh at Cleveland  
 San Francisco at Baltimore  
 Washington at Green Bay

## THURSDAY, NOVEMBER 26 (Thanksgiving Day)

Green Bay at Detroit

## SUNDAY, NOVEMBER 29

EAGLES at PITTSBURGH  
 Chicago Bears at Chicago Cards  
 Los Angeles at Baltimore  
 San Francisco at Cleveland  
 Washington at New York

## SATURDAY, DECEMBER 5

Baltimore at San Francisco

## SUNDAY, DEC. 6

EAGLES at WASHINGTON  
 Chicago Cards at Detroit  
 Cleveland at New York  
 Green Bay at Los Angeles  
 Pittsburgh at Chicago Bears

## SATURDAY, DECEMBER 12

Baltimore at Los Angeles

## SUNDAY, DECEMBER 13

CLEVELAND at EAGLES  
 Chicago Cards at Pittsburgh  
 Detroit at Chicago Bears  
 Green Bay at San Francisco  
 New York at Washington

## SUNDAY, DECEMBER 27

World's Championship Playoff in Home City  
 of Western Conference Champions.

## SUNDAY, JANUARY 17, 1960

ALL-STAR PRO-BOWL GAME  
 AT LOS ANGELES

## TRADITIONALLY

the Discriminating choose  
 The Warwick for their  
 before and after the  
 game huddle.

*Warwick Room*  
*Embassy Room*  
*Coach Room*

## The Warwick

LOCUST at SEVENTEENTH • Pennypacker 5-3800



## \$20 to \$2000

Loans for any good purpose.

You may choose from a wide  
 variety of repayment plans.

Sensible terms.

▼ Dependable service since 1878.

## HOUSEHOLD FINANCE

*Corporation*  
Loans above \$600 made by

## HOUSEHOLD CONSUMER DISCOUNT CO.

See phone book  
 for office nearest you

# H. Wilson Ltd.



From ankle-lovin' garter lengths to shoulder-huggin', thigh-squeezin' suits, **Wilson's** is fast turning downtown Chestnut Street into Philadelphia's own Madison Ave. Often called the **home of the original wait seam**, Hal Wilson's unpretentious shop is a memorial to men who will tolerate nothing less than authenticity in conservative tailoring. Stop in. Lose yourself among the racks, rows and tables of distinctive natural clothing and accompaniments. Then ask about Hal's **Discount Policy**. You'll wonder how he does it.

**705 CHESTNUT STREET, PHILA. 6, PA.**  
 WAlnut 2-3922  
 Daily 9 to 6    Wed. 9 to 9  
 Diner's Club Cards & Citizen's Charge Plan Accepted  
 Free Parking at 615 Chestnut Street

HAUGHTON WEYMOUTH & BISHOP,  
 Inc.

**INSURANCE BROKERS  
 FOR THE EAGLES**

BACKED BY 26 YEARS EXPERIENCE

Fidelity-Philadelphia Trust Building  
 Philadelphia 9, Pa.

PE 5-4524

# EAGLES — GIANTS ALL-TIME RECORD

|                | Home or<br>Away | Eagles | Giants |
|----------------|-----------------|--------|--------|
| Oct. 15, 1933  | (A)             | 0      | 56     |
| Dec. 10, 1933  | (H)             | 14     | 20     |
| Oct. 28, 1934  | (A)             | 0      | 17     |
| Dec. 3, 1934   | (H)             | 6      | 0      |
| Nov. 24, 1935  | (A)             | 0      | 10     |
| Dec. 1, 1935   | (H)             | 14     | 21     |
| Sept. 13, 1936 | (H)             | 10     | 7      |
| Oct. 25, 1936  | (A)             | 17     | 21     |
| Oct. 3, 1937   | (H)             | 7      | 16     |
| Oct. 17, 1937  | (A)             | 0      | 21     |
| Sept. 25, 1938 | (H)             | 14     | 10     |
| Oct. 16, 1938  | (A)             | 7      | 17     |
| Sept. 24, 1939 | (H)             | 3      | 13     |
| Oct. 15, 1939  | (A)             | 10     | 27     |
| Sept. 28, 1940 | (H)             | 14     | 20     |
| Oct. 13, 1940  | (A)             | 7      | 17     |
| Sept. 13, 1941 | (H)             | 0      | 24     |
| Oct. 12, 1941  | (A)             | 0      | 16     |
| Oct. 11, 1942  | (A)             | 17     | 35     |
| Nov. 8, 1942   | (H)             | 0      | 14     |
| Oct. 29, 1944  | (A)             | 24     | 17     |
| Nov. 12, 1944  | (H)             | 21     | 21     |
| Nov. 11, 1945  | (H)             | 38     | 17     |
| Dec. 2, 1945   | (A)             | 21     | 28     |
| Nov. 3, 1946   | (H)             | 24     | 14     |
| Nov. 10, 1946  | (A)             | 17     | 45     |
| Oct. 5, 1947   | (H)             | 23     | 0      |
| Nov. 9, 1947   | (A)             | 41     | 24     |
| Oct. 10, 1948  | (H)             | 45     | 0      |
| Nov. 7, 1948   | (A)             | 35     | 14     |
| Dec. 4, 1949   | (A)             | 24     | 3      |
| Dec. 11, 1949  | (H)             | 17     | 3      |
| Nov. 26, 1950  | (A)             | 3      | 7      |
| Dec. 10, 1950  | (H)             | 7      | 9      |
| Oct. 21, 1951  | (A)             | 24     | 26     |
| Dec. 9, 1951   | (H)             | 7      | 23     |
| Oct. 4, 1952   | (H)             | 7      | 31     |
| Oct. 26, 1952  | (A)             | 14     | 10     |
| Nov. 8, 1953   | (H)             | 30     | 7      |
| Nov. 29, 1953  | (A)             | 28     | 37     |
| Nov. 14, 1954  | (A)             | 14     | 27     |
| Dec. 12, 1954  | (H)             | 29     | 14     |
| Sept. 24, 1955 | (H)             | 27     | 17     |
| Nov. 20, 1955  | (A)             | 7      | 31     |
| Oct. 28, 1956  | (A)             | 3      | 20     |
| Dec. 15, 1956  | (H)             | 7      | 21     |
| Oct. 5, 1957   | (H)             | 20     | 24     |
| Nov. 17, 1957  | (A)             | 0      | 13     |
| Oct. 5, 1958   | (H)             | 27     | 24     |
| Nov. 30, 1958  | (A)             | 10     | 24     |

EAGLES WON 17; LOST 32; TIED 1.

## Merger Series

|               |     | Phil-Pitt | Giants |
|---------------|-----|-----------|--------|
| Oct. 9, 1943  | (H) | 28        | 14     |
| Oct. 24, 1943 | (A) | 14        | 42     |

# NEW YORK GIANTS

## FRANK GIFFORD

**Halfback—Offense; 8th Year; Southern California; 29; 205; 6'1; Bakersfield, Calif.**

*Pro:* Drafted No. 1 in '52. One of the most versatile backs in NFL history, and one of the finest. In '56, third at pass catching and fifth at rushing, the first player to finish so high in both. Repeated in first 10 at both in '57 with a fourth catching and a 10th rushing. MVP of NFL in '56. Made Pro Bowl squad five straight years. On Bowl squad as defense player in '53 and as offense player in '54, first man to make it both ways. As a forward passer, has thrown 12 touchdowns in 41 attempts. Played 50 minutes both ways for last five games of '53, in emergency.

*School:* Genuine Iron Man triple-threat player in age of specialization at USC. As senior rushed 841 yards, completed 32 of 61 passes, scored seven touchdowns, and kicked 26 extra points and two field goals for 74 points. Of 111 passes in three years, only three were intercepted. Also was accurate punter and crack pass catcher. Played both single-wing tailback and T quarterback. Co-captain of West against East, and of North against South, and worked 60 minutes in both games. Halfback on American Football Coaches Assn. All-American team.

*Personal:* Born Aug. 16, 1930. Under contract to Warner Bros. for moving pictures. Has had featured roles. Has TV show and sports column in Bakersfield. Wife Maxine was sweetheart at USC; they have two sons and a daughter.

## JIM PATTON

**Halfback—Defense; 5th Year; Mississippi; 26; 180; 5'10; Belzoni, Miss.**

*Pro:* Drafted No. 8 in '55. Sprinter-fast. In one game as rookie scored touchdowns on 98-yard kickoff return and 69-yard punt return. Regular right safety. Was NL interception leader in 1958 with 11, gaining 183 yards. Called by defensive coach Tom Landry "one of finest defensive backs" in pro ball.

*School:* Tabbed by many as best defense halfback in Southeastern Conference. Dash man on track team; Coach Howell saw him run 100 in 9.9 in competition.

*Personal:* Married, with two children.

## ANDY ROBUSTELLI

**End—Defense; 9th Year; Arnold; 31; 230; 6'1; Stamford, Conn.**

*Pro:* Drafted No. 19 by Rams in '51. Traded to Giants for draft pick for '56. Provided tremendous lift in Giant title drive of '56. Annual as all-star pro defense end. Solves blocking pocket to hurry or drop quarterback. In one game in Cleveland he downed George Ratterman six times for 60 yards in Giant win. Great favorite with fans.

*School:* Little All-America 1948-49-50. All-New England 1949-50. Three letters in baseball.

*Personal:* Has two sports goods stores in Stamford area. Married, with five children.

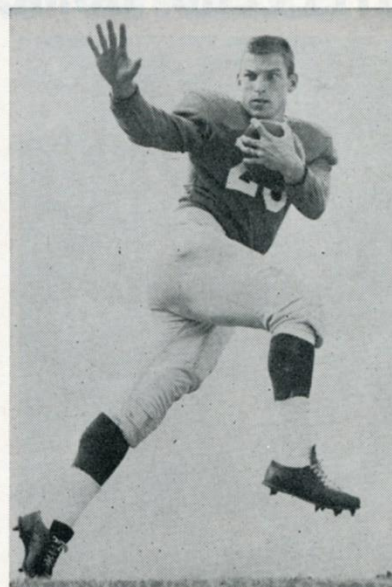
## KYLE ROTE

**End—Offense; 9th Year; Southern Methodist; 31; 205; 6; San Antonio, Texas**

*Pro:* Bonus choice in '51 draft. Second all-time Giant pass receiver, with 183 to 195 for Frank Gifford. Offense captain. One of league's consistently outstanding players. Probably would have amassed spectacular statistics were it not for knee injury as rookie, which required cartilage operation. Gradually shifted from heavy-duty ball carrying to end for last four years.

*School:* Unanimous All-America in '50. Sportsmanship Trophy of Southwest Conference. Made one of college football's greatest individual stands when he nearly snapped Notre Dame's four-year unbeaten march in finale of '49 in Cotton Bowl.

*Personal:* Born Oct. 27, 1927. Lives in Scarsdale, N. Y. Represents Texas trucking firm and also has radio and TV interests. Played minor league baseball. Can give golf pros a tussle. Giant player representative. Club champ in almost every sport. Married, with three sons.



Jimmy Patton, HB

## EDGCOMB STEEL COMPANY

PHILADELPHIA

STEEL —————  
ALUMINUM  
————— BRASS



Andy Robustelli, E

# STEELERS COME TO PHILA. SUNDAY OCTOBER 11



Jack Butler, HB



Bobby Layne, QB



Dale Dodrill, G



George Tarasovic, LB

*Relax . . .*  
and enjoy the game!

**GO BY**  
**YELLOW**  
TAXICABS

CADILLAC CHAUFFEURED  
LIMOUSINES

YELLOW CAB CO. OF PHILA.  
WA 2-8400

•

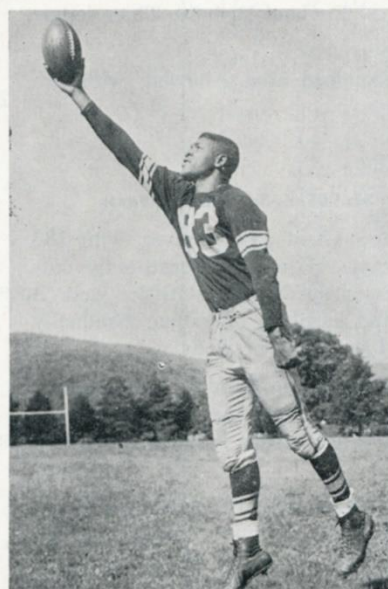
YELLOW LIMOUSINE SERVICE, INC.  
WA 2-8440



Ernie Stautner, T



Ray Mathews, E



Jack McClairan, E



Len Dawson, QB

# REDSKINS BATTLE EAGLES SUNDAY NOVEMBER 1



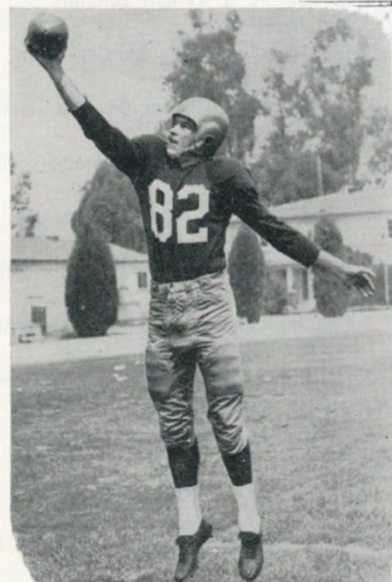
Sam Baker, B



Don Boll, T



Don Bosseler, FB



John Carson, E

## PHOTO-ARTS PRODUCTIONS, Inc.

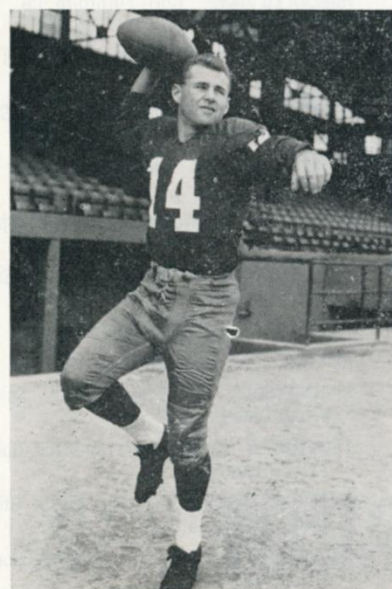
*Official Photographers  
for the Philadelphia Eagles*

Philadelphia's  
Leading Producers of  
TELEVISION COMMERCIALS  
INDUSTRIAL  
SALES TRAINING  
AND  
SPORTS FILMS

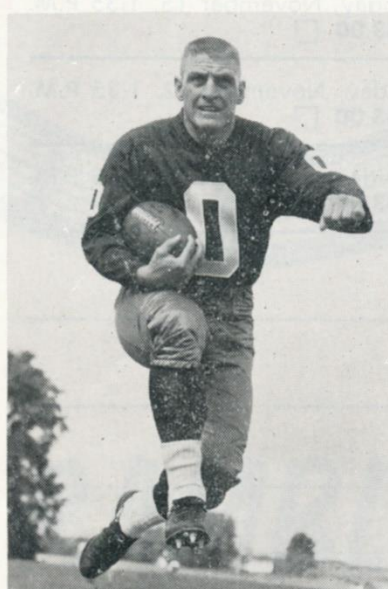
2330 Market St. LO 3-3696



Leo Elter, FB



Eddie LeBaron, QB



John Olszewski, FB



Chet Ostrowski, E

## EAGLES TICKET OFFICE OPEN WED. NIGHTS

For your ticket buying convenience the Eagles' ticket offices at 15th & Locust Streets will be open every Wednesday night until nine o'clock. So when you are in town shopping, stop in at the Eagles' ticket office and buy your tickets for the best sports attraction in town.

## NOTICE!

If you are expecting a telephone call or any other message while attending a game at Franklin Field, please leave your seat location at the box office and an attendant will notify you. No announcements will be made over the public address system.

## AUTHORIZED EAGLES' TICKET AGENCIES

PHILADELPHIA: Gimbel Brothers, Ticket Office, 8th & Chestnut Sts.; Denery Sporting Goods, 2765 Kensington Ave.; Denery Sporting Goods, 7949 Oxford Ave.; Bond Clothes, 63 W. Cheltenham Ave.; Sam Framo, 2246 W. Allegheny Ave.; Dave Shusterman, 6384 Castor Ave.; Penn Sherwood Hotel, 39th & Chestnut Sts.; Walnut Park Plaza Hotel, 63rd & Walnut Sts.; Central City Ticket Office, 1422 Chestnut St.

ALLENTOWN, PA.: Witwer Jones Co., 923 Hamilton St.

ARDMORE, PA.: Spritzler's, 16 W. Lancaster Ave.

ATLANTIC CITY, N. J.: Carroll Print Shop, 2646 Atlantic Ave.

AUDUBON, N. J.: Mike Hayes, 23 White Horse Pike.

BETHLEHEM, PA.: Romeo's Ticket Agency, Colonial Grill, 100 W. Broad St.

BRIDGETON, N. J.: Dorr Furniture Co., 462 N. Laurel St.

BRISTOL, PA.: Field's Sporting Goods, 515 Wood St.

CAMDEN, N. J.: Quaker City Bus Terminal, Broadway & Cooper Sts.

CHELTENHAM, PA.: Gimbel Brothers Ticket Office.

CHESTER, PA.: Smed's Sport Center, 824 Edgmont St.

COATESVILLE, PA.: Sante Drug Store, 8th & Main Sts.

CONSHOHOCKEN, PA.: Anthony's Men's Shop, 117 Fayette St.

DOWNINGTOWN, PA.: Downingtown Farmers' Market Sports Center.

HARRISBURG, PA.: Shenk & Tittle, 313 Market St.

HATBORO, PA.: Bailey Associates, 219 N. York Rd.

LANCASTER, PA.: Shenk Bros., 30 W. King St.

LEVITTOWN, PA.: Central Record Stores.

MILLVILLE, N. J.: Dorr Furniture Co., 113 N. High St.

NORRISTOWN, PA.: Frank Jones, 228 W. Main St.

PENNSGROVE, N. J.: Charles Charlap's Sons, 35 S. Broad St.

PHOENIXVILLE, PA.: Werner Bus Lines, 142 Penna. Ave.

PITMAN, N. J.: Woodward's Auto Supply, 162 S. Broadway.

POTTSTOWN, PA.: Bechtel's Sport Shop, 157 High St.

POTTSVILLE, PA.: Penn Cigar Store.

READING, PA.: Nuebling's, 9th & Penn Sts.

SPRINGHOUSE, PA.: Charles Burns, Springhouse Tavern.

TRENTON, N. J.: Geo. Case Sporting Goods, 121 E. Hanover St.

UPPER DARBY, PA.: Terminal Ticket Office, 69th & Market Sts.

WILDWOOD, N. J.: Scoop's Sporting Goods, 202 W. Rio Grande Ave.

### SINGLE TICKET APPLICATION

## PHILADELPHIA EAGLES FOOTBALL CLUB

15th and LOCUST STREETS, PHILADELPHIA 2, PA. • PE 5-4014

Enclosed is my check for \$.....for tickets to the following game(s):

Number  
of Tickets



### CHAMPIONSHIP GAMES AT FRANKLIN FIELD

PITTSBURGH STEELERS .....Sunday, October 11, 1:35 P.M.  
Tickets @ \$6.00 ☐ - \$5.00 ☐ - \$3.00 ☐

WASHINGTON REDSKINS .....Sunday, November 1, 1:35 P.M.  
Tickets @ \$6.00 ☐ - \$5.00 ☐ - \$3.00 ☐

CHICAGO CARDINALS .....Sunday, November 15, 1:35 P.M.  
Tickets @ \$6.00 ☐ - \$5.00 ☐ - \$3.00 ☐

LOS ANGELES RAMS .....Sunday, November 22, 1:35 P.M.  
Tickets @ \$6.00 ☐ - \$5.00 ☐ - \$3.00 ☐

CLEVELAND BROWNS .....Sunday, December 13, 1:05 P.M.  
Tickets @ \$6.00 ☐ - \$5.00 ☐ - \$3.00 ☐

Name.....

Please Print

Address.....

City

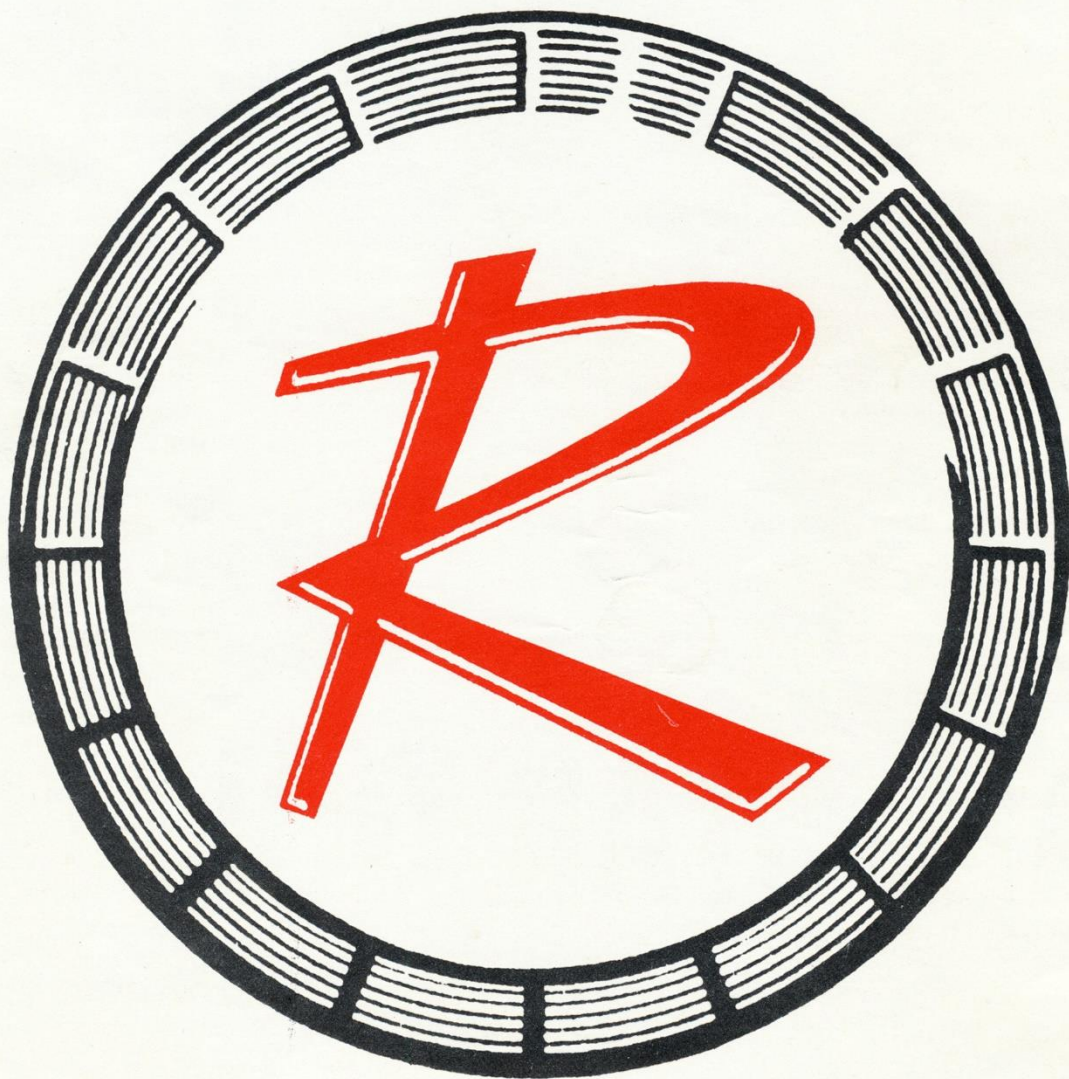
Zone

State

Phone Number.....

All Prices Include Taxes. Make Checks Payable to "Philadelphia Eagles." Add 35¢ to cover insurance and mailing.

*Be Smart . . .* → **GO RAMBLER**

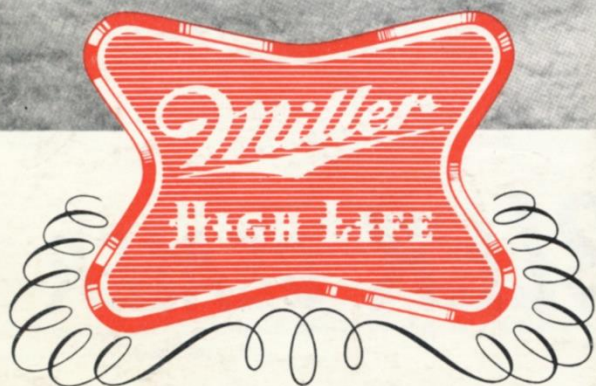


**SEE YOUR RAMBLER DEALER**

Greatest  
Sport Show  
on TV

# ALL-STAR GOLF

One full hour of  
exciting golf thrills



MILLER BREWING CO., MILWAUKEE, WIS.

every week on

**WFIL-TV** Channel 6

Check local station listings for date and time