

YANKEE STADIUM

OFFICIAL PROGRAM • 50 CENTS



VS.

PITTSBURGH

STEELERS

NOVEMBER 15, 1959

What a team!



All packed with pleasure by Philip Morris Inc.

PHILIP MORRIS • PARLIAMENT • MARLBORO • BENSON & HEDGES



GEM GIVES YOU THE TOUGH TEAM TO TAME A TOUGH BEARD

New! GEM Push-Button Razor

Automatically gives you the one
correct shaving angle to
shave your tough
beard.



Proved! GEM Extra-Sharp Blades

4 times the steel of ordinary
blades. Only blade heavy enough to hold
a cutting edge—18% sharper by scientific test.

Never before have you used a
razor like the new Gem Push-Button
Razor. Teamed with an extra-heavy,
extra-sharp Gem Blade, it's the most
efficient instrument in history for
shaving tough beards. Join the Gem
Team now—only \$1. **GEM guaran-
tees: no "5 o'clock shadow!"**

See World Championship Golf every Sunday
afternoon on NBC-TV—sponsored by Gem

\$1.00

in Presentation
Case
with Dispenser
of Gem Blades.

PRECISION **ASR** PRODUCTS

A•S•R PRECISION PRODUCTS

OFFICIAL PROGRAM

NEW YORK GIANTS



vs. PITTSBURGH STEELERS

YANKEE STADIUM • Nov. 15, 1959

Volume 35

Number 4

CONTENTS

A Hard Row	3
Coach and Four Make Giants Go	5
Giant Album	7 and 13
Redskins Here Nov. 29	9
Jottings on the Giants	11
Giants' 1959 Statistics	15
Steelers' Roster and Line-up	16
Giants' Roster and Line-up	17
Looking Over the Steelers	19
Yankee Stadium Services	21
Steeler Stars	23
Giants-Steelers Series	25
N. F. L. Officials' Signals	27
Giant Blackboard: Stunting	29
All-Time Giant Records	32
This Week's N. F. L. Pairings, Team Records	32
N. F. L. Standings and Leaders	32

NEW YORK FOOTBALL GIANTS

JOHN V. MARA	President
WELLINGTON T. MARA	Vice-President
RAYMOND J. WALSH	General Manager
TIMOTHY J. MARA	Secretary-Treasurer
JIM LEE HOWELL	Head Coach
AL SHERMAN	Offensive Coach
TOM LANDRY	Defensive Coach
JOHN DELL ISOLA	Line Coach
KEN KAVANAUGH	End Coach
WALT YOWARSKY	Assistant Coach and Scout
JOHN JOHNSON, SID MORET and JOHN DZIEGIEL	Trainers
DR. FRANCIS SWEENEY	Physician
DR. ARTHUR CROKER	Dentist
DON SMITH	Director of Publicity

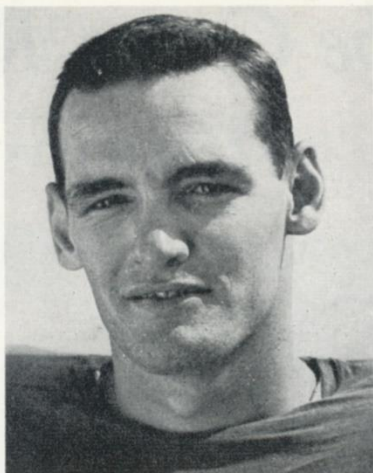
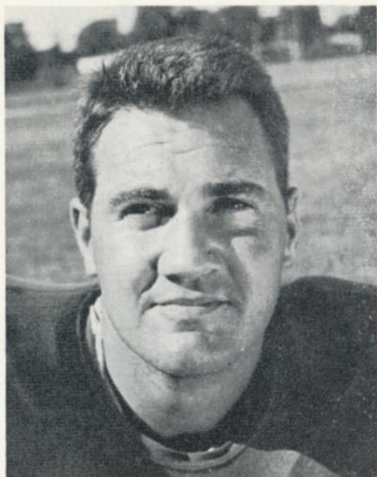
This book published by
HARRY M. STEVENS, Inc.
320 Fifth Avenue
New York 1, N. Y.

QUALITY



Products of *The American Tobacco Company*

"Tobacco IS OUR MIDDLE NAME"



A Hard Row...

PRIZE-WINNERS: Pat Summerall and Dick Lynch won the weekly Coro Awards as top Giants on offense and defense against the Cardinals.

THE Giants beat the Cardinals last Sunday on three field goals by Pat Summerall and stalwart defensive play. That made it five in a row for Jim Lee Howell's boys. They lead the National League's Eastern Conference with a 6-1 won-lost record.

How does the coach feel about getting the Giants over the campaign's first-half hump in such fine shape?

"It's great to be out in front. What's the use of kidding? I'm tickled to death about it," says Big Jim.

"But we're not deluding ourselves. In this league, we could go 1-4 for the rest of the way just as easily as we went 6-1 up to here. It even could happen if we keep playing good football.

"Take the game with the Cardinals. I thought our team played pretty fair football. But Chicago gave us fits from start to finish. Did the Cardinals look like a club that had lost five games? I'll let you answer that one.

"Now we have the Steelers coming up. We know—and you know—how tough they can be. Then it's the Cardinals again, in Minneapo-

lis. Out there on Nov. 22 we may be playing in six feet of snow.

"To wind things up, we have two games with the Redskins, here and there, with Cleveland in between. If anyone thinks those are breathers, ask Baltimore."

Coach Jim paused a moment, for breath and reflection, then continued: "The subject of Baltimore brings up a point. There has been a lot of loose talk the last couple of years about how much stronger the Western Conference is than the Eastern.

"At Los Angeles last year, when I was coaching the East in the

Pro Bowl game, we got a skinful of that. They pooh-poohed our defense. 'You're not facing any good pass receivers,' they said. They pooh-poohed Jimmy Brown. 'He'd never make all those yards in the rough, tough West,' they said. A lot of other things were said along the same lines.

"You can't answer statements like that because the people who make them aren't going to listen to you, anyway, so I didn't make too much of a fuss.

"Have you noticed, though, how the wind out of the West has died down? If you want to know why, take a look at the results (see page 32). We beat the Rams and Packers. Cleveland and Washington knocked off the Colts. Pittsburgh tied Detroit. There was one East-West upset. San Francisco beat Philadelphia, but that was early, before the Eagles got flying.

"In my book, we're in the tough division—and I've got that 4-1-1 record to back me up. There's just one trouble about proving the point. It makes me worry about what's going to happen to us. We've run out of games with the West. We have to play the rough, tough East from here on in."

Ode to the Defense

While raking leaves on his Long Island estate the other day, Bob Sheppard, the erudite "Voice of the Stadium," was impelled by the muse to compose these ringing lines:

These are the four that the carriers fear:

Robustelli, Katcavage, Modzelewski and Grier!

These are the three that the runners find tough:

Livingston, Sware and husky Sam Huff!

And these make the passers reluctant to throw:

Nolan and Lynch, Patton and Crow!

PLEASE USE ENTRANCE RAMP NEAREST YOUR SEAT

Enjoy the Game Refreshed



Time out...
Have a Coke



SIGN OF GOOD TASTE

Coach and Four Make Giants Go



BRAIN TRUST: Johnny Dell Isola, Ken Kavanaugh, Tom Landry, Allie Sherman, Jim Lee Howell.

MANY head football coaches, particularly old-liners, are charter members of the Leader Cult. They set up their command posts conspicuously out in front and gush forth noisily as the founts of all knowledge on matters pertaining to their teams—and just about everything else.

Under Jim Lee Howell, the Giants operate under a more modern concept. Few coaches are better qualified to command than Howell. Consider some of the things he has been and done en route to his role as the autumnal resident genius at Yankee Stadium.

Big Jim was president of the Student Council and captain of a basketball team that went to the final tryouts for the 1936 Olympics, as well as a star end, at the University of Arkansas. He was company commander of a Marine combat unit in the Pacific Theatre in World War II. He served a term in the Arkansas State Senate by the dicta of his fellow citizens of Lonoke, where, off-seasons, he sagely administered his own rice plantation and prize cattle herd. While still playing big league football, he was a successful small college coach at Staten Island's

Wagner College.

If ever a man had a right to view himself as eight feet tall, instead of a mere 6-foot-6, it was Howell, when the big chance to take charge of the Giants came his way at the end of the 1953 season. Big Jim took command all right, in a manner that has added greatly to his stature. But he did it in his own level-headed, enlightened way.

It is Howell's singular theory that coaching command and responsibility in modern football should be plural. Pro football is a specialized game, with distinct units for attack, defense, kicking and kick defense, etc. So, Big Jim reasoned, why not apply the same principle to coaching?

That he had done, to an extent unapproached elsewhere, with brilliant results. Under the Howell regime, the Giants are the only National League club—in East or West—that has consistently finished over .500.

Under the Howell delegation-of-authority system, Allie Sherman is charged with planning the over-all attack and Tom Landry with charting the over-all defense. Ken Kavanaugh, end coach, de-

signs pass patterns tailored to fit the attack plan. Johnny Dell Isola, line coach, plots stunts to implement the defense plan.

Much in the manner of a chairman of the board, Howell confers with his aides each Tuesday to review strategy. He has the power to veto their suggestions, of course, but seldom exercises it. And once a plan has been agreed on, Big Jim leaves it to Sherman and Landry to execute same.

It's part of the system, also, for Howell, after a game, to refer questions on details to the man responsible for them—Landry, Sherman, Kavanaugh or Dell Isola, as the case may be.

This *modus operandi* has helped keep Giant morale high, on the playing as well as the coaching level. The Giant assistants, in turn, listen to and respect suggestions by the players.

Yes, there's rivalry between the Giant platoons. But it's a healthy rivalry, stimulated by the desire to excel and underlined by a spirit of togetherness that springs from a head coach who believes in being on the team, not just its leader.



Sorry, Hy Finn...hot dogs and soda pop are strictly cash-and-carry! But for CHEVRON Supreme Gasoline, the high-octane super premium, a CHEVRON Credit Card is good as gold. It's good for a raft of other automotive products, too...at CHEVRON Stations and thousands of other stations from coast to coast. Get one yourself. Ask any Chevron Dealer for an application.



CHEVRON SUPREME GASOLINE

PRODUCT OF THE CALIFORNIA OIL COMPANY

Giant Album



Jack Stroud

Jack Stroud (66), thankfully, is sound again after a couple of seasons of being plagued by knee injuries. When he's on solid underpinning, there's no better guard in the business than the deep-chested Tennessee graduate. Even when hobbled, as he was during most of 1957 and 1958, he was better than fair. Jack puts his 235 pounds to effective blocking use on straightahead plays and also is a tiger at leading the interference on sweeps.



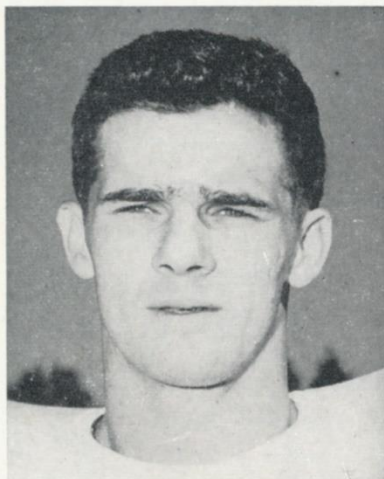
Mel Triplett

For five years **Mel Triplett (33)** has provided the Giants with lethal blocking and powerful running from the fullback position. The 215-pound Ohioan, drafted No. 5 by the Giants in 1955 after winning All-Ohio honors at the University of Toledo, hits the line with tremendous impact and keeps chugging for extra yards after being tackled. Mel, the father of five children, is studying to become a sociologist.



George Scott

George Scott (31), a comparatively unsung No. 19 draft choice from Miami of Ohio, earned his spurs with the Giants this year by his spirited running in pre-season training. Quick in his movements and fast afoot, the 180-pound youngster from Bainbridge, Pa., has done a good job as a kick-off and punt returner. He also fits into the picture as a spare offensive halfback. He's an excellent pass-catcher.



Dick Nolan

Dick Nolan (25) is on his second tour of defensive backfield duty with the Giants. He broke in with them, out of the University of Maryland, in 1954 and played here through 1957. In 1958 he went to the Cardinals in the deal for Lindon Crow. He returned to the Giants, by way of the Packers, this season. It has been a happy homecoming for the gamester from White Plains, N. Y.—and for the Giants.



Frank Youso

A year of experience has worked wonders for **Frank Youso (72)**, who joined the Giants last year out of the University of Minnesota. Big, fast and aggressive from the start, Frank now has learned the tricks of the trade and seems headed toward rating as one of the game's top offensive tackles. The 6-foot 4-inch, 260-pound Youso hails from International Falls, Minn., also the home town of the great Bronco Nagurski.



Lindon Crow

Lindon Crow (41), a No. 2 draft choice of the Cardinals in 1955, was acquired by the Giants in a 1958 trade. Fast, rugged and knowing, he has turned in a solid job as left corner man in the secondary defense. The league-leading pass interceptor in 1956, the U. S. C. graduate has made some important steals for the Giants, notably the end zone grab that helped beat the Browns a few weeks back.

AUTOGRAPH COLLECTORS: Giant Album is a weekly feature

PLEASE USE ENTRANCE RAMP NEAREST YOUR SEAT

Guess which drink is better for you?

Fizzless highball



1. Big feature, easy to make. Turn the tap, fill the glass. No longer socially acceptable, lacking in good taste.



2. What happened to the flavor of the liquor?
A lifeless, bland drink.



3. Flat'er than a pancake!
Wishy-washy...
Your very best bet...
start afresh.



4. Sparkling mixers save you money and trouble. Every drink tastes great... better for you too.

Sparkling highball

1. Big feature... delectable taste. Costs more than tap water... but worth 5 times as much... Why?



2. Makes a lively drink every time. Makes any liquor taste terrific!



3. The drink comes alive with flavor. Money saving... You bet! Why?



4. No wasted drinks... no disappointed drinkers. You're traveling first class with Canada Dry Mixers.



Research says: "Highballs with sparkling mixers are better for you"

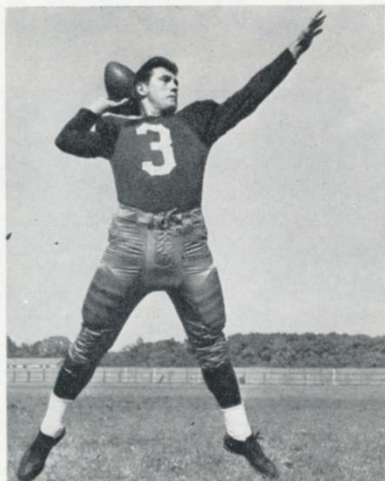
Here's why—It's the lively bubbles!

1. They speed the liquid through your system 80% faster than plain water.
2. They aid your digestion.
3. They curb unpleasant aftereffects.

Only Canada Dry Mixers have exclusive "Pin-Point Carbonation"—livelier, longer-lasting bubbles. Also superior flavor, from secret formulas, improve the taste of any liquor.



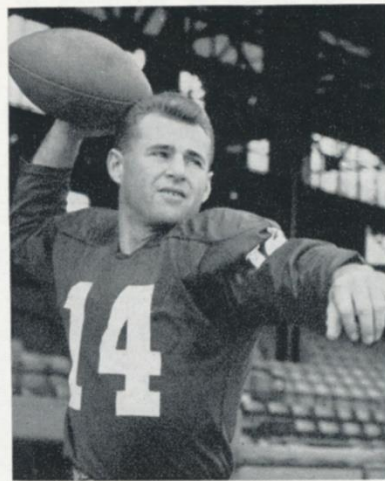
Redskins Here Nov. 29



RALPH GUGLIELMI



DON BOSSELER



EDDIE LE BARON

YOU'LL have to watch the Giants on Channel 2 next Sunday. They'll be in Minneapolis for a return engagement with the Chicago Cardinals. But two weeks from today, they'll be back in person to meet the Redskins in the first of two successive home games that will wind up the 1959 Stadium season—barring play-offs.

The Redskins have had trouble getting untracked. But with their great offensive personnel, they're always a threat. In Ralph Guglielmi and Eddie LeBaron, they have two of the league's most deadly passers. Don Bosseler, Jim Podoley, Ed Sutton and Dick James are a brilliant set of runners. Sam Baker is the best combination punter-place kicker in the business. The cast directed by

Coach Mike Nixon also includes a lot of other hard-nosed performers.

Over the years, Giants-Redskins games have produced many bonus thrills. This contest should be no exception. With the Giants in the thick of the title fight, every game from here on in is critical. This could be more critical than any because of its booby-trap potentialities. It's a game that the Giants will be expected to win. In this league, that can be the kiss of death.

So we look forward to seeing you here again on Nov. 29 for another stirring afternoon of sports entertainment. As increasing millions of Americans appreciate, there's no football like pro football!

Coming Giant Attractions at Stadium

GAME

5

NOV. 29

**WASHINGTON
REDSKINS**

*with Ralph Guglielmi
Eddie LeBaron
Don Bosseler
Sam Baker*

**TICKET
PRICES:**

\$5.00

**BOX
SEATS**

\$4.00

**RESERVED
SEATS**

Here's Where to Buy Tickets in Person

YANKEE STADIUM
161st St. and River Ave.
Bronx, N. Y.
Mon.-Sat. 9-5 P.M.

YANKEE TICKET OFFICE
North Mezzanine
Grand Central Station
Mon.-Fri., 10-6 P.M.; Sat., 10-4

OR

DAVEGA STORES

Jamaica—163-24 Jamaica Avenue
Hempstead—45 Main Street
Newark—110 Market Street

Hackensack—325 Main Street
White Plains—175 Main Street

ALSO

ANDY ROBUSTELLI'S SPORTS SHOP
in Stamford, Conn.

GAME

6

DEC. 6

**CLEVELAND
BROWNS**

*with Jimmy Brown
Bobby Mitchell
Milt Plum
Lou Groza*

**ADDRESS ALL
MAIL ORDERS TO:**

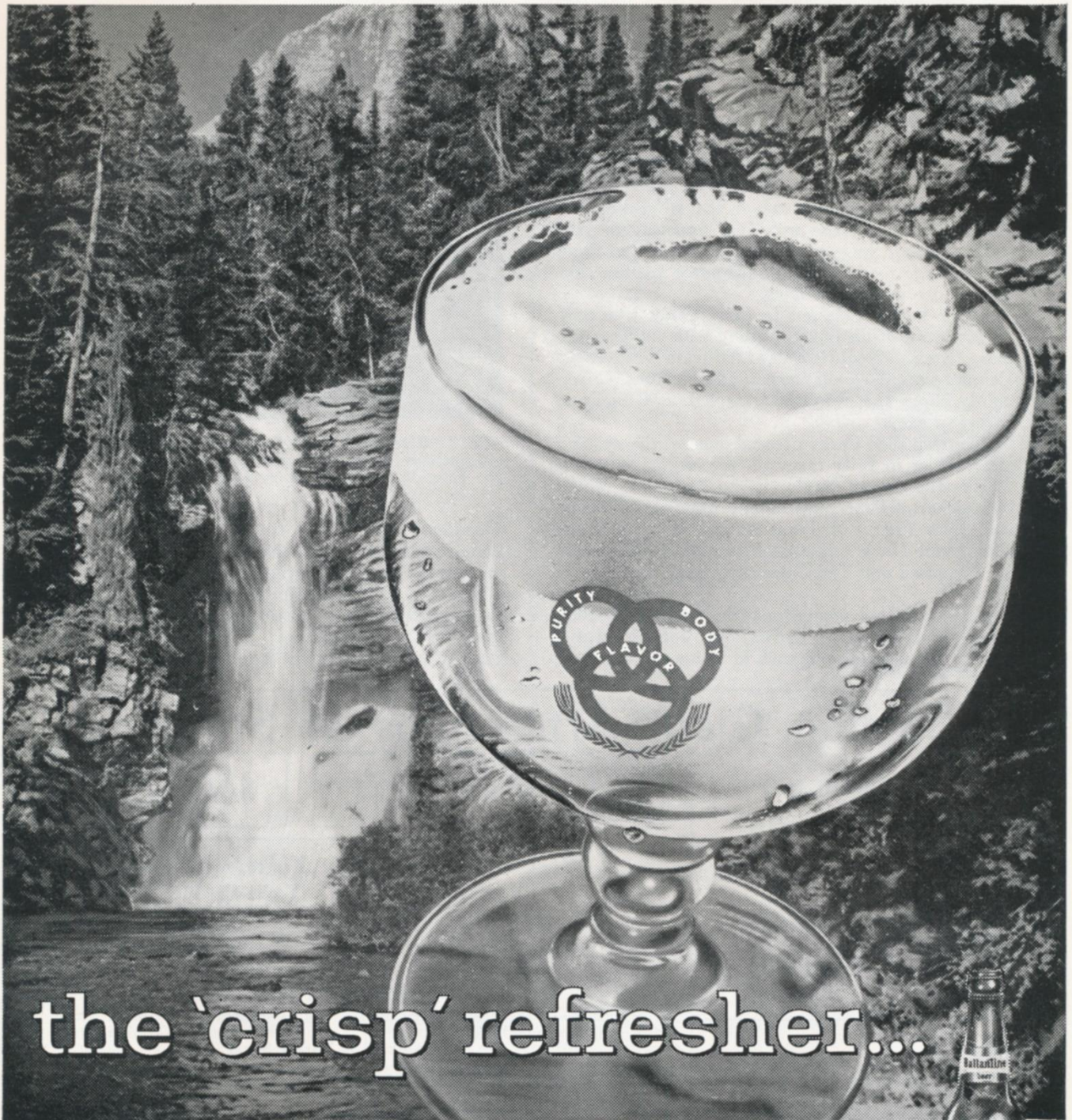
**TICKET MANAGER
NEW YORK FOOTBALL GIANTS**
10 Columbus Circle
New York 19, N. Y.

(Add 50c for mailing and handling)

Make check or money order payable: NEW YORK FOOTBALL GIANTS, INC.

Tickets Now on Sale at Advance Sale Windows in Main Lobby

Ballantine LIGHT LAGER beer



the 'crisp' refresher...

© IS A REG. T. M. OF P. BALLANTINE & SONS, NEWARK, N. J.

It's the crisp kind of light
...with true lager flavor!



No wonder Ballantine is the largest-selling beer in the East.



Jottings on the Giants

DON'T forget "Charlie Conerly Day" at the Stadium two weeks from today, when the Giants meet the Redskins. And order your tickets for the "Charlie Conerly Night" dinner-dance that follows at the Concourse Plaza Hotel. Tickets for this gala affair, priced at \$10, may be obtained from Harry Bachrach at Section Five Club headquarters in the Concourse Plaza. Make reservations now!

Today's halftime entertainment will be provided by the Bergenfield (N. J.) High School band, a long-time favorite of Giant fans. This crack unit is directed by Bernard T. Baggs, Director of Music and Adult Education in the Bergenfield public schools. Dr. Baggs formerly commanded the 318th Infantry, 80th Infantry Division and 722nd Army Air Forces bands. For the seventh consecutive year, Dr. Baggs' Bergenfield pupils have been selected to perform in the Macy Thanksgiving Day Parade.

Bryan Maher, a Giant fan, is



DAY AND NIGHT tribute to Charlie Conerly set for Nov. 29.

organizing an excursion of Giant fans to Washington for the Dec. 13 game with the Redskins. The party will leave from the Concourse Plaza Hotel in chartered busses at 11:30 A.M., Saturday, Dec. 12, and arrive at the Hotel DuPont

Plaza (Giant headquarters) in Washington at 4:30 P.M. There'll be a cocktail party in honor of the Giants that evening. The special busses will leave the DuPont Plaza for Griffith Stadium at 12:30 P.M. Sunday, take off for New York after the game at 5 P.M. and arrive back at the Concourse Plaza at 9:30 P.M. The fee, including transportation, hotel and cocktail party, is \$19.75 (based on two in a room). Add \$2 if you want a single room. Buy game tickets through the Giant office. Make reservations by Dec. 1 with the Maher Travel Bureau, Hotel Concourse Plaza, Bronx 51, N. Y. (CYpress 3-4848). Let's all follow the "Big Blue Team" to victory!

The Bermuda-length jumper dresses worn by the Giants' cheerleaders are of Modern Juniors design by Mona Roset. The novel leotites and attractive blue shoes are by Capezio.



HOTEL MANHATTAN HEADQUARTERS FOR PROFESSIONAL TEAMS IN NEW YORK CITY

New York's newest... Hotel Manhattan offers 1400 air conditioned guest rooms, each with television and radio. Known as the "Home of Champions," this magnificent skyscraper hotel is ideally located in the heart of Times Square. Meet your friends at the Manhattan Bar or the new Playbill Restaurant for cocktails, luncheon, dinner and supper.

Express Subway Trains Speed You to
Yankee Stadium from the Private
Subway Entrance of Hotel Manhattan

FRANK W. KRIDEL

Executive Vice President and General Manager



HOTEL

Manhattan

44TH TO 45TH STREETS
AT EIGHTH AVENUE • JUDson 2-0300



Have a real cigarette— have a **CAMEL**

Nobody beats Camel to the draw for rich tobacco flavor and easygoing mildness. "My kind of cigarette—no fads or fancy stuff," says "Lawman" star John Russell. Co-star Peter Brown goes along: "Tastes good, smokes mild." Today more people smoke Camels than any other brand. The best tobacco makes the best smoke.



Tune in Camel's exciting new "LAWMAN" on ABC-TV

R. J. Reynolds Tobacco Co.,
Winston-Salem, N. C.

Giant Album



Geo Shaw

George Shaw (15), the 1955 bonus draft choice of Baltimore, came to the Giants from the Colts in exchange for a future draft choice just prior to the season. A crackerjack passer whose four-season pro record shows 210 completions in 410 attempts for 2820 yards and 21 TDs, the former Oregon star gives the Giants a "second home run hitter" in support of Charlie Conerly at quarterback. The quotes are Coach Howell's.



Frank Gifford

In eight brilliant seasons with the Giants, **Frank Gifford (16)** has established himself as one of the team's all-time greats. They don't make backs more versatile than the handsome Southern California graduate, Frank annually finishes among the leaders in rushing and receiving, throws a mean running pass, can place-kick and would be welcomed back on the defensive platoon, on which he was a rookie regular. Versatile off the field too, he has made his mark in Hollywood, on television and in various business enterprises.



Cha. Conerly

Only Sammy Baugh and Bobby Layne have thrown more N. F. L. touchdowns passes than **Charlie Conerly (42)**. The gallant 38-year-old Giant quarterback had fired 147 pay-off shots going into this season and had gained nearly ten miles on his 1212 pass completions. A triple threat single-wing tailback at Mississippi and as a Giant rookie in 1948, Charlie switched under center when the Giants changed to T formation in 1949. Always at his best in the clutch, Conerly has played a starring role in most of the important Giant victories of his long tenure.



Alex Webster

Alex Webster (29) has been a great chips-down runner for the Giants for five seasons. Going into this year, he had carried the ball 2,290 yards and scored 20 touchdowns. A product of Kearny, N. J., and North Carolina State, Alex failed to make the grade with the Redskins in 1953 but played so well in Canada that year and in 1954 that the Giants signed him in 1955. It was an inspired move and, with Gifford, he gives the Giants as fine a pair of half-backs as there is in the league.



Kyle Rote

Kyle Rote (44), the bonus choice of the Giants in the 1951 draft, is another offensive key to the Giants' recent success. A triple-threat tailback at Southern Methodist, he switched from the backfield to end in 1955 and has become one of the league's top wingmen. He's a solid blocker, a masterful faker and specializes in making impossible catches.



Don Heinrich

On the word of Jim Lee Howell, no quarterback in football is better at probing opposing defenses than **Don Heinrich (11)**. This six-year Giant from Washington has done many notable jobs of finding soft spots that can be exploited. He's also a remarkably deft ball-handler and a deadly short passer. As a collegian, he led the nation in passing in 1950 and 1952. Don gives the Giants enviable bench depth in pro football's most vital position.

AUTOGRAPH COLLECTORS: Giant Album is a weekly feature

PLEASE USE ENTRANCE RAMP NEAREST YOUR SEAT



Her Secret? She Opened a

GOLD MEDAL

SPECIAL CHECKING ACCOUNT

No more money-budget problems. Now she consults her checkbook and tells exactly how much she spent for each item. Why don't you open a Gold Medal Special Checking Account today?

- Low cost
- No minimum balance required
- Convenience — make deposits at any of our 102 banking offices throughout Greater New York
- Your name printed on each check — without charge
- Cancelled checks are legal proof of payment
- Gold Medal Service — courteous, accurate, friendly

**CHEMICAL BANK
NEW YORK
TRUST COMPANY**

Founded 1824

MEMBER FEDERAL DEPOSIT INSURANCE CORPORATION

*The Bank That's
Near You In Greater New York*

1959 Giant Statistics

SEVEN-GAME TEAM RECORD

GIANTS	OPPONENTS
42 First downs, rushing	36
60 First downs, passing	60
6 First downs, penalty	5
108 Total first downs	101
2190 Total yards gained	1813
805 Yards gained, rushing	623
1385 Yards gained, passing	1190
245 Number of rushing attempts	214
171 Number of passing attempts	186
97 Passes completed	89
12 Passes intercepted by	8
47.7 Punting average	42.4
28 Punts returned	21
1.6 Punt return average	9.0
21 Kick-offs returned	28
23.0 Kick-off return average	27.1
27 Penalties	21
236 Yards penalized	175
17 Fumbles	14
8 Opponents' fumbles recovered	12

INDIVIDUAL RECORDS

PASSING

	Att.	Comp.	Int.	Yds.	L.G.	TDs.	Pct.
Conerly	122	70	3	994	77	4	.574
Shaw	36	24	1	433	46	1	.667
Heinrich	9	3	3	44	32	0	.333
Gifford	3	0	1	0	0	0	.000
Webster	1	0	0	0	0	0	.000

SCORING

	TD-R	TD-P	TDs.	PAT.	FG.	Pts.
Summerall	0	0	0	14-14	10-16	44
Gifford	2	2	4	0	0	24
Webster	3	0	3	0	0	18
Schnelker	0	2	2	0	0	12
Conerly	1	0	1	0	0	6
Huff	1	0	1	0	0	6
Rote	0	1	1	0	0	6
Svare	1	0	1	0	0	6
Triplet	1	0	1	0	0	6

RUSHING

	Att.	Yds.	L.G.	Avg.
Gifford	50	221	37	4.4
Triplet	56	196	15	3.5
Webster	44	136	16	3.1
Morrison	42	121	12	3.0
King	36	93	24	2.6
Conerly	9	22	10	2.4
Scott	2	10	7	5.0
Heinrich	2	3	9	1.5
Shaw	3	3	1	1.0

RECEIVING

	No.	Yds.	TDs.	L.G.
Gifford	28	531	2	77
Schnelker	20	384	2	66
Webster	15	198	0	41
Morrison	12	128	0	33
Rote	12	119	1	13
Triplet	4	50	0	23
Summerall	2	32	0	21
King	3	17	0	18
Scott	1	12	0	12

PUNT RETURNS

	No.	Yds.	L.G.
Morrison	8	17	7
Scott	12	17	13
Patton	4	6	6
Crow	4	6	5

INTERCEPTIONS

	No.	Yds.	L.G.
Crow	3	24	24
Patton	3	1	1
Svare	2	96	70
Nolan	2	39	34
Livingston	1	9	9
Lynch	1	0	0

KICK-OFF RETURNS

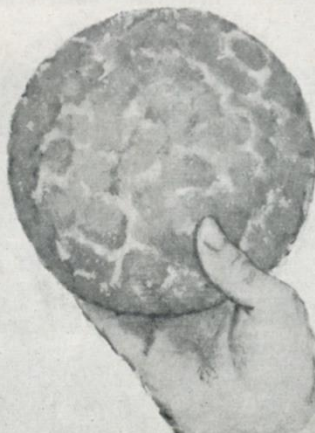
	No.	Yds.	L.G.
Scott	10	253	33
Morrison	10	227	29
Summerall	1	3	3

PUNTING

	No.	Avg.	Lgst.
*Chandler	35	47.7	62

*League leader.

"He tried to take my
Drake's
COOKIES"



Steelers on Offense

R. H. MATHEWS (25)	F. B. KRUTKO (39)	Q. B. LAYNE (22)	L. H. TRACY (30)
R. E. ORR (86)	R. T. VARRICHIONE (74)	R. G. NISBY (65)	C. BEATTY (57)
		L. G. SANDUSKY (62)	L. T. KARRAS (61)
			L. E. BREWSTER (88)

Giants on Defense

L. E. KATCAVAGE (75)	L. T. MODZELEWSKI (77)	M. L. B. HUFF (70)	R. T. GRIER (76)	R. E. ROBUSTELLI (81)
L. W. CROW (41)	L. L. B. LIVINGSTON (89)	L. S. NOLAN (25)	R. S. PATTON (20)	R. L. B. SVARE (84)
				R. W. LYNCH (22)

PITTSBURGH STEELERS ROSTER

No.	Player	Position	Weight	Height	College	Yrs. Pro
16	Dawson, Len	QB	195	6:00	Purdue	3
20	Call, Jack	HB	195	6:01	Colgate	3
22	Layne, Bobby	QB	210	6:01	Texas	12
24	Luna, Bobby	HB	195	6:01	Alabama	1
25	Mathews, Ray	HB	195	6:00	Clemson	9
26	Hall, Ronnie	HB	190	6:00	Missouri Valley	1
27	Derby, Dean	HB	195	6:00	Washington	3
30	Tracy, Tom	HB	205	5:09	Tennessee	4
34	Elter, Leo	FB	205	5:10	Villanova	7
35	Hayes, Rudy	LB	215	6:00	Clemson	1
39	Krutko, Larry	FB	225	6:00	West Virginia	1
42	Alban, Dick	HB	195	6:01	Northwestern	8
43	Barnett, Tom	HB	190	5:11	Purdue	1
50	Reger, John	LB	230	6:01	Pitt	5
57	Beatty, Ed	C	225	6:03	Mississippi	5
60	Dodrill, Dale	G	215	6:01	Colorado State	9
61	Karras, Ted	G	235	6:01	Indiana	2
62	Sandusky, Mike	G	230	6:02	Maryland	3
65	Nisby, John	G	230	6:01	College of Pacific	3
66	Campbell, Dick	LB	225	6:01	Marquette	2
68	Henry, Mike	LB	215	6:02	U. S. C.	1
70	Stautner, Ernie	T	230	6:03	Boston College	10
71	Lewis, Joe	T	260	6:02	Compton	2
72	Beams, Byron	T	250	6:06	Notre Dame	1
73	Fisher, Ray	T	230	6:00	Eastern Illinois U.	1
74	Varrichione, Frank	T	230	6:02	Notre Dame	5
75	Krupa, Joe	T	225	6:02	Purdue	4
77	Smith, Billy Ray	E	230	6:04	Arkansas	3
80	Butler, Jack	HB	195	6:01	St. Bonaventure	9
82	Tarasovic, George	E	245	6:04	L. S. U.	7
83	Dial, Buddy	HB	185	6:01	Rice	1
84	Nagler, Gern	E	190	6:02	Santa Clara	6
86	Orr, Jim	E	195	6:00	Georgia	2
87	McClair, Jack	E	200	6:04	Bethune-Cookman	5
88	Brewster, Darrel	E	210	6:04	Purdue	8
89	Lasse, Dick	LB	230	6:02	Syracuse	2

GIANT SPECIAL

Punting—Chandler
PAT, FG and Kick-Offs—
Chandler
Holding for PAT, FG—
Kick Returns—Morris
(31), King (24), F

OFFICIALS

Referee

William Downes (31)

Umpire

Frank Sinkovitz (1)

Head Lines

John Highberger (48),

Back Judge

Stanley Jaworowski (2)

Field Judge

James Kane (38), L

STEELER SPECIAL

Punting—Luna
PAT, FG—Luna
Kick-Offs—Luna
Holding for PAT, FG—
Kick Returns—Call (2)

PLEASE USE ENTRANCE RAMPS

Calvert Reserve

CK-OFF
05 P.M.

Giants on Offense

R. H. WEBSTER (29)	F. B. TRIPLETT (33)	Q. B. HEINRICH (11)	L. H. GIFFORD (16)
R. E. SCHNELKER (85)	R. T. YOUSO (72)	R. G. STROUD (66)	C. WIETecha (55)
		L. G. BARRY (68)	L. T. BROWN (79)
			L. E. ROTE (44)

Steelers on Defense

L. E. TARASOVIC (82)	L. T. LEWIS (71)	M. L. B. DODRILL (60)	R. T. FISHER (73)	R. E. STAUTNER (70)
L. W. DERBY (27)	L. L. B. CAMPBELL (66)	L. S. LUNA (24)	R. S. BUTLER (80)	R. W. ALBAN (42)

SPECIALISTS

—Chandler (34).
ck-Offs—Summerall (88),
andler (34).
AT, FG—Conerly (42).
Morrison (40), G. Scott
g (24), Patton (20)

OFFICIALS

Referee

ynes (3), Illinois Tech

Umpire

nkovitz (20), Duke

d Linesman

ger (48), Carnegie Tech

ck Judge

owski (29), Georgetown

eld Judge

e (38), Loyola (Md.)

R. SPECIALISTS

ng—Luna (24).
FG—Gyne (22).
Offs—Luna (24).
AT, FG—Dawson (16).
—Call (20), Tracy (30).

NEW YORK GIANTS ROSTER

No.	Player	Position	Weight	Height	Age	College	Yrs. Pro
11	Heinrich, Don	QB	180	6:00	28	Washington	6
15	Shaw, George	QB	180	6:00	26	Oregon	5
16	Gifford, Frank	HB	205	6:01	29	U. S. C.	8
20	Patton, Jim	HB	180	5:10	27	Mississippi	5
22	Lynch, Dick	HB	200	6:01	23	Notre Dame	2
24	King, Phil	HB	225	6:04	23	Vanderbilt	2
25	Nolan, Dick	HB	185	6:01	27	Maryland	6
29	Webster, Alex	HB	225	6:03	28	North Carolina State	5
31	Scott, George	HB	180	6:01	21	Miami (Ohio)	1
33	Triplet, Mel	FB	215	6:01	27	Toledo	5
34	Chandler, Don	HB	205	6:02	24	Florida	4
40	Morrison, Joe	HB	194	6:01	21	Cincinnati	1
41	Crow, Lindon	HB	200	6:01	26	U. S. C.	5
42	Conerly, Charlie	QB	185	6:01	38	Mississippi	12
44	Rote, Kyle	E	200	6:00	31	S. M. U.	9
48	Stits, Bill	HB	195	6:00	27	U. C. L. A.	6
55	Wietecha, Ray	C	225	6:01	30	Northwestern	7
60	Guy, Buzz	G	248	6:03	24	Duke	2
62	Dess, Darrell	G	235	6:00	24	North Carolina State	2
66	Stroud, Jack	T	235	6:01	30	Tennessee	7
68	Barry, Al	G	230	6:02	27	U. S. C.	4
70	Huff, Sam	LB	230	6:01	24	West Virginia	4
71	Kelly, Ellison	G	231	6:01	23	Michigan State	1
72	Youso, Frank	T	260	6:04	23	Minnesota	2
75	Katcavage, Jim	E	230	6:03	24	Dayton	4
76	Grier, Rosey	T	285	6:05	26	Penn State	4
77	Modzelewski, Dick	T	260	6:00	28	Maryland	7
78	Schmidt, Bob	T	245	6:04	23	Minnesota	2
79	Brown, Rosey	T	245	6:03	26	Morgan State	7
80	Biscaha, Joe	E	190	6:01	22	Richmond	1
81	Robustelli, Andy	E	230	6:01	31	Arnold	9
82	Scott, Tom	LB	220	6:02	29	Virginia	7
84	Svare, Harland	LB	214	6:00	28	Washington State	7
85	Schnelker, Bob	E	215	6:04	27	Bowling Green	7
88	Summerall, Pat	E	235	6:04	29	Arkansas	8
89	Livingston, Cliff	LB	215	6:03	29	U. C. L. A.	6

E RAMP NEAREST YOUR SEAT

MORE POWER TO PLEASE

Calvert
RESERVE
American Blended Whiskey

Improve your **WHOLE** appearance with Wildroot-Palmolive care



For your hair . . .

WILDROOT CREAM-OIL

Keeps Hair Groomed Longer—
Makes Hair Feel Stronger than
hair groomed an ordinary way!

WILDROOT HAIR TONIC CREAM-OIL



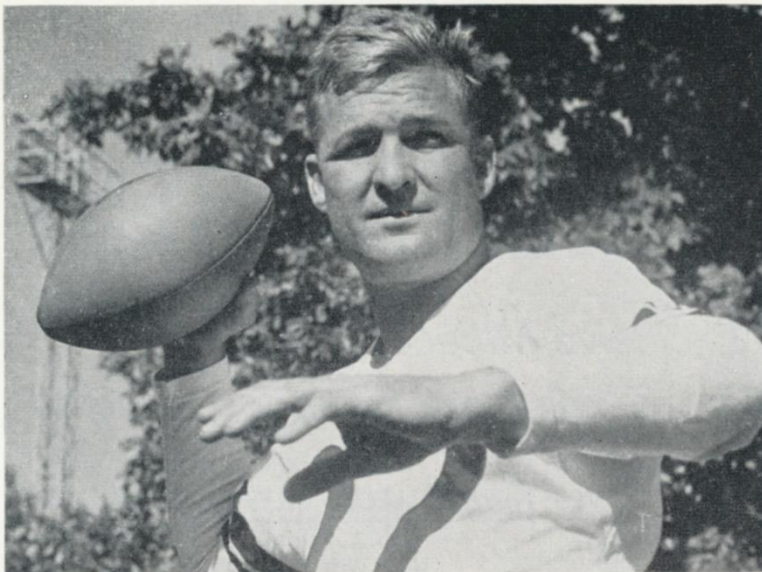
For your face . . .

PALMOLIVE RAPID-SHAVE

. . . Regular or Menthol
both Super Moisturized for
the Fastest, Smoothest
Shaves Possible. Shave cleanly,
comfortably with Rapid-Shave!

To look your best, look for these good grooming aids





"COACH ON FIELD": Bobby Layne, quarterback par excellence

Looking Over The Steelers

WITH us today for their annual visit to the Stadium are the rough, tough Pittsburgh Steelers, an opponent the Giants have learned to respect as much as any rival—including the Cleveland Browns.

The Men of Steel from the Steel City traditionally play the most rugged football in the National League. And, since Buddy Parker took over as coach in 1957 and Bobby Layne rejoined him as quarterback in 1958, the Steelers have augmented their habitual rock-and-sock line play, on offense and defense, with some of the fanciest fripperies in the pro game.

In Layne, lured away from the Lions early last season by Parker, Pittsburgh has one of football's truly dominant personalities.

The Blond Bomber from Texas is one of the great passers—only Sammy Baugh has thrown more touchdown passes. He's an outstanding place-kicker. Once also a brilliant runner, he's still a threat on roll-outs, although the ankle he broke with Detroit in 1957 has slowed him down a step or two.

But most of all, Bobby is a quarterback in the truest sense of the word. Nobody runs a ball game better or commands greater respect from the players he leads. As Parker puts it, "He's a coach on the field."

With Layne at the helm, the Steelers have developed one of the most dangerous attacks in the business. It centers around Bobby's passing, to an outstanding corps of receivers headed by Jimmy Orr, Ray Mathews, Pete Brewster, Vern Nagler and Buddy Dial. These are snake-hipped fellows who run knot-tying patterns and have the speed to go deep for the game-breaking attack.

While Pittsburgh's ground attack suffers from lack of depth at the running positions, the Men of Steel have a highly effective carrier in Tom (The Bomb) Tracy, a high-geared little armored tank who packs 205 pounds on a 5-foot 9-inch frame and chugs along inexorably whether there's an opening or not.



HEAD MAN: Buddy Parker

His deep backfield companion is Larry Krutko, a 220-pound crasher who drills hard into the holes opened by a crisp-blocking offensive line led by Frank Varichione at right tackle and Ed Beatty at center.

On defense, the Steelers present a unit that compares in quality to the mighty protectors of the Giant goal line.

Ernie Stautner, a perennial all-league choice, and George (The Beast) Tarasovic, who also has won all-star acclaim, are the destructive leaders of an intractable rush line. Dale Dodrill—another all-leaguer—John Reger and Dick Campbell back up the line uncompromisingly.

An experienced deep secondary features fleet Jack Butler, the only safety man in the league who rates mention in the same breath as New York's Jimmy Patton.

This is a formidable crew, indeed, and it comes here filled with wrath at having let the Giants get off the hook in that memorable thriller at Pittsburgh a few weeks back, when a spectacular goal line stand preserved a 21-16 New York victory.

A formidable second-half team, in game and season, the Steelers present a mighty challenge to the Giants. Our boys had better be ready.

PLEASE USE ENTRANCE RAMP NEAREST YOUR SEAT

YOUR FILTER CIGARETTE NO LONGER FILTERS BEST

*New LIFE's Exclusive Millecel Filter Has
Far More Absorbing Power! Far More Filtering Capacity!*



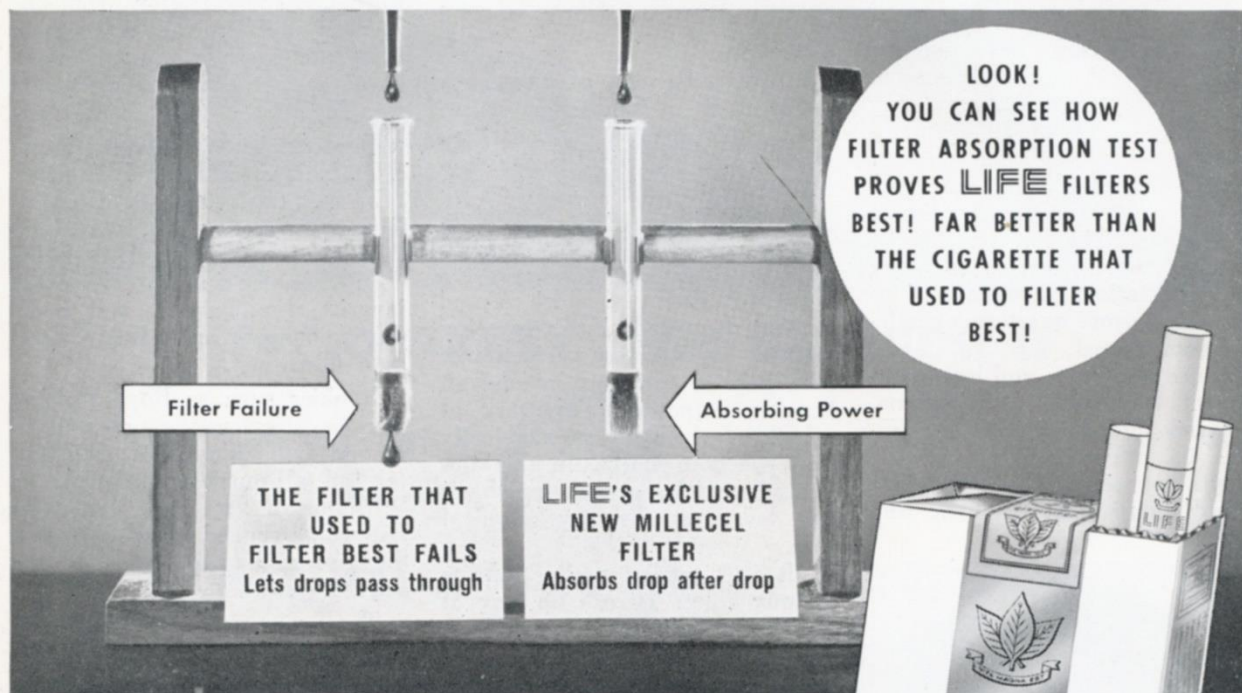
SEE TV TEST THAT PROVES NEW MILLECEL FILTER SUPERIORITY!

1. In test shown below, the filter on the right is Life's new Millecel Super Filter. On the left is the filter that used to filter best.
2. Equal amounts of liquid are dropped into each filter.
3. After only a few drops, the filter

that used to filter best fails. Lets drops pass right through.

4. But Life's exclusive new Millecel Super Filter absorbs drop after drop.

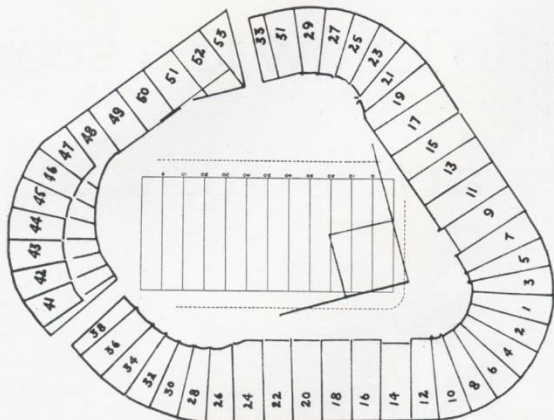
Proof positive! Life's Millecel Super Filter filters best by far!



New LIFE
FILTERS BEST BY FAR

The secret of LIFE is in the filter!

Services & Facilities Yankee Stadium



LOST AND FOUND—Direct inquiries and reports to James K. Thomson, the Stadium Manager. Any attendant will direct you to his office.

REST ROOMS—**Men:** Gate 2, Press Gate, Stadium Club (lower, upper), Gate 6; Lower Sections 34, 8, 6, 15, 21, 27; Mezzanine Sections 27, 15, 5, 18, 28; Upper Sections 34, 20, 6, 15, 21; Bleacher Sections 43, 47, 52. **Women:** Gate 2, Gate 4, Stadium Club (lower, upper), Gate 6; Lower Sections 28, 20, 5, 15, 27; Mezzanine Sections 21, 15, 6, 18, 34; Upper Sections 28, 20, 5, 15, 29; Bleacher Sections 47, 52.

PUBLIC TELEPHONES —Gate 2, Gate 4, Press Gate, Stadium Club (lower, upper), Gate 6, Lower Sections 24, 14, 12, 11, 17, 27; Mezzanine Sections 27, 17, 7, 8, 22; South side 157th St., Ruppert Pl. to Cromwell Ave. Upper Sections 34, 20, 12, 8, 9, 19, 27; Bleacher Sections 41, 49, 51.

PARKING AREAS YANKEE LOTS

South side 157th St., Ruppert Pl. to Cromwell Ave.
Between Cromwell and River Aves., on 153rd St.
163rd to 164th Sts., between River and Gerard Aves.
151st St. and River Ave., opposite Bronx County jail.

PRIVATELY-OWNED LOTS

West side Ruppert Pl., between 157th and 158th Sts.
West side River Ave., between 151st and 153rd Sts.
West side River Ave. and 157th St.
East side River Ave., North of 153rd St.
East side River Ave., North of 151st St.
East side River Ave., 164th to 165th Sts.
East side River Ave., South of 162nd St.
Farmer's Square—Cromwell Ave. Roadway, and
West of 151st St. Viaduct, opposite Bronx County Jail.
East 168th St. and River Ave.

GARAGES

Cromwell Ave. and 157th St.
East side of River Ave., South side of 158th St.
East side of River Ave., North side of 157th St.
East side of River Ave., South side of 157th St.
North side of 158th St., between River and Gerard Aves.
Also, the Polo Grounds lot again will be in service for all Giant games at the Stadium.

SOUVENIR PRICE LIST

Rooter Badge (All Teams).....	.25	Plastic Cushion.....	1.00
Picture Set (12 Players).....	.25	Player Doll (small).....	.75
Team Pennants (small).....	.50	Stadium Cap (ear laps).....	2.00
Team Pennants (large).....	.75	Giants Bracelet.....	1.40
Giants Pen and Pencil Set.....	.75	Football (small).....	1.50
Giants Player Trophy.....	1.00	Football (large).....	3.00

Souvenir Stands located at Gates 2, 4, 6; Lower Sections 2, 18; Mezzanine Sections 20, 23; Upper Sections 18, 21; Bleacher Sections 43, 50.

These items also are available by mail from Harry M. Stevens, Inc., Souvenir Dept., Yankee Stadium, Bronx 51, N. Y.

PARK & TILFORD



When you measure
whiskey value—it's
a good rule to buy
REPUTATION



A reputation is hard to build, easy to destroy. Because we value ours, we market only the finest whiskey your money can buy.

\$4.30
4/5 QUART

\$5.29
QUART

\$2.70
PINT

BLENDED WHISKEY. 70% GRAIN NEUTRAL SPIRITS. 86 PROOF. PARK & TILFORD, N. Y.

Men who know the score
are turning to

... enjoy **Schenley**
RESERVE

The Whisky of Elegance

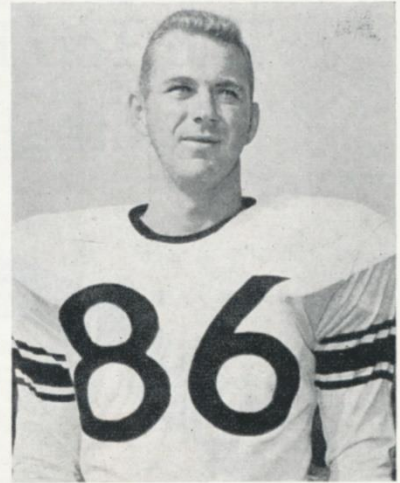




TOM TRACY



JACK BUTLER



JIMMY ORR

Steeler

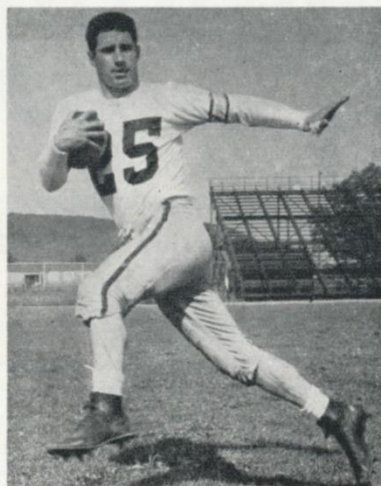


ERNIE STAUTNER

Stars



FRANK VARRICHIONE



RAY MATHEWS



JOHN REGER

PLEASE USE ENTRANCE RAMP NEAREST YOUR SEAT

League Leaders!

The Top Bourbon ... Like the Top
Football Team ... has Quality!

J.W. DANT WORLD'S LARGEST SELLING BONDED BOURBON



Take your choice of the two Kentucky favorites—Dant 100 Proof Bottled in Bond or J. W. Dant 86 Proof ... its mild, light, lower-priced partner.

NATIONAL LEAGUE LEADERS

Rushing.....	Brown, Cleveland, 183-862 yds.
Passing.....	Guglielmi, Washington, 26 of 60-515 yds.
Receiving.....	Berry, Baltimore, 44-643 yds.
Scoring.....	Brown, Cleveland, 60 pts.
Punting.....	CHANDLER, NEW YORK, 47.7-yd. avg.
Punt Returns.....	Butler, Green Bay, 7-80 yds.
Kick-Off Returns.....	Powell, Philadelphia, 9-296 yds.
Interceptions.....	Lowe, Detroit, 5-130 yds.



FOUNDER MEMBER

Series Review:

GIANTS vs. STEELERS

Of all the Giants' old-line Eastern Conference opponents, the Steelers have given the New Yorkers the hardest time in recent years.

Although the Giants hold a 27-18-2 over-all edge in the series between the clubs, which has continued without a lapse since its inception in 1933, the rivalry has been a virtual stand-off since the end of World War II in 1945.

Of the twenty-eight games the teams have played during that span, the Giants have won 14, the Steelers 13 and there has been one tie.

The Steelers scored two-game sweeps in 1947, 1949, 1953 and 1955 and, in the single game played in 1952, handed the Giants a 63-7 beating that was the worst ever suffered by the New Yorkers.

The Giants registered sweeps in 1946, 1954 and 1956 and, with a 21-16 victory in hand in that bone-crushing thriller at Pittsburgh a few weeks back, have a chance to post another.

But, as the record indicates, Pittsburgh doesn't beat easily.

GIANTS vs. ALL OPPONENTS

Opponent	W.	L.	T.	Pts.	Opp. Pts.
Baltimore Colts	2	2	0	72	71
Chicago Bears	14	20	2	451	554
Chicago Cards	27	8	0	794	540
Cleveland Browns	9	11	1	290	362
Detroit Lions	5	8	1	177	285
Green Bay Packers	15	14	2	425	396
Los Angeles Rams	3	7	0	208	224
Philadelphia Eagles	33	18	1	978	790
Pittsburgh Steelers	27	18	2	853	658
San Francisco 49ers	2	1	0	78	62
Washington Redskins	28	16	1	893	727

The complete series record:

1933—Giants 23, Steelers 2	1947—Steelers 38, Giants 21
Giants 27, Steelers 3	Steelers 24, Giants 7
1934—Giants 14, Steelers 12	1948—Giants 34, Steelers 27
Giants 17, Steelers 7	Steelers 38, Giants 28
1935—Giants 42, Steelers 7	1949—Steelers 28, Giants 7
Giants 13, Steelers 0	Steelers 21, Giants 17
1936—Steelers 10, Giants 7	1950—Giants 18, Steelers 7
1937—Giants 10, Steelers 7	Steelers 17, Giants 6
Giants 17, Steelers 0	1951—Giants 13, Steelers 13
1938—Giants 27, Steelers 14	Giants 14, Steelers 0
Steelers 13, Giants 10	1952—Steelers 63, Giants 7
1939—Giants 14, Steelers 7	1953—Steelers 24, Giants 14
Giants 23, Steelers 7	Steelers 14, Giants 10
1940—Giants 10, Steelers 10	1954—Giants 30, Steelers 6
Giants 12, Steelers 0	Giants 24, Steelers 3
1941—Giants 37, Steelers 10	1955—Steelers 30, Giants 23
Giants 28, Steelers 7	Steelers 19, Giants 17
1942—Steelers 13, Giants 10	1956—Giants 38, Steelers 10
Steelers 17, Giants 9	Giants 17, Steelers 14
1945—Giants 34, Steelers 6	1957—Giants 35, Steelers 0
Steelers 21, Giants 7	Steelers 21, Giants 10
1946—Giants 17, Steelers 14	1958—Giants 17, Steelers 6
Giants 7, Steelers 0	Steelers 31, Giants 10
	1959—Giants 21, Steelers 16

Enjoy 'em at the Game and at Home

Here at Yankee Stadium, reach for MRS. WAGNER'S delicious individual pies. At home, enjoy the fresh-baked goodness of MRS. WAGNER'S family-size pies. Both ways, you're in for real enjoyment.



Why bake when you can buy

Mrs. Wagner's Pies



"THESE FRANKFURTS ARE HICKORY SMOKED!"

Enjoy 'em at home, the circus, the football field, *everywhere!*
Take your choice—regular or all-beef franks—both are *all meat!* Both deliciously hickory-smoked! Available in jars and cellophane, too. By famous...

Stahl-Meyer



FAMOUS FERRIS HICKORY SMOKED CANNED HAM AND FERRIS BACON ARE TWO MORE FINE PRODUCTS MANUFACTURED AND KITCHEN TESTED BY STAHL-MEYER INC.

NATIONAL LEAGUE OFFICIALS' SIGNALS



Offside



Crawling, Pushing,
Helping Runner



Illegal Motion



Illegal Pass



Unsportsmanlike
Conduct



Pass Interference



Holding, Illegal
Use of Hands



Personal Foul
(indication of
offense follows)



Delay of Game,
Excess Time-Out



Touchdown, Field
Goal, Extra Point



Safety



Loss of Down



Penalty Declined,
Incomplete Pass,
Missed Goal



First Down



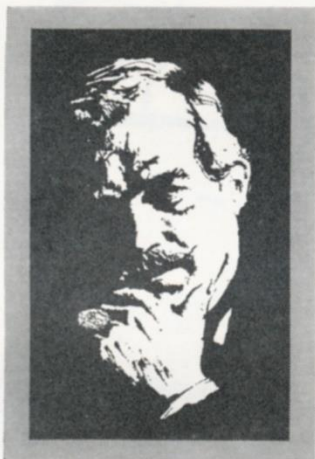
Dead Ball



No Time-Out or
Time In with Whistle



Time-Out



RECOMMENDED BY THOSE WHO
THINK BEFORE THEY DRINK



Original
MELROSE
Old Fashion Whiskey



SUPERLATIVE BLENDED WHISKEY 86 PROOF. 65% GRAIN NEUTRAL SPIRITS. MELROSE DISTILLERS CO., N. Y.



A Football Star with quite a reputation
Could run sixty yards without hesitation
He could pass and kick... be his own blocker
go over the goal line

Knocking for Knickerbocker



RUPPERT

Knickerbocker

New York's Famous Beer

Jacob Ruppert, N.Y.C.

Giant Blackboard: Stunting

DON'T ever get the idea that just because the Giants usually line up the same way on defense—with their four rush-liners head-and-head to the offensive guards and tackles, one line-backer close up on the tight end and the other backers off the line a bit, opposite the center and in the gap left by the split offensive end—that the adamant New York defense is static.

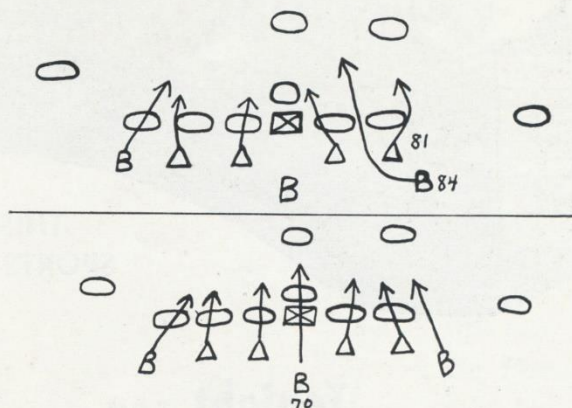
From this basic four-three set-up, defensive coach Tom Landry's wreckers execute umpty-ump of the defensive plays that are known as "stunts" in the baffling lexicon of the gridiron.

Two of them are diagrammed in the adjacent column, from tracings of drawings by Texas Tom himself.

The top diagram depicts a maneuver the Giants have named "Blitz Wanda," because it is designed to break the weakside (Wanda) line-backer into the opposing backfield. The same play, worked on the strongside, is called "Storm Sara."

As the defenders' course arrows indicate, "Blitz Wanda" is based on diverging charges by Andy Robustelli (81), right end, and Harland Sware (84), right line-backer. Robustelli charges wide, to draw out the offensive left tackle and also to protect the outside, as Sware slices through inside the tackle in a bid to smear the play before it can develop.

The bottom diagram shows a seven-man rush, called "Migs Red Dog," in which Sam Huff (70),



the middle (Migs) line-backer is the principal gap-shooter. On this play, Huff directs his charge at the vulnerable offensive center as the other six Giant frontiersmen barrel in with all the power they can muster.

Slanting or crossing charges often will be used by the other linemen on this play to help Huff break through. For instance, one of the Giant tackles might cross charge on the center.

Take time out from watching the ball this afternoon and study the coordinated action of the Giant defensive line and its backers. You'll soon get to appreciate the marvelous flexibility of the four-three set-up devised by Landry.



See America's Dream Track! Heated, weather-controlled Grandstand areas. Luxury dining in the Cloud Casino and Promenade Cafe! Diners' Club member. For reservations phone Pioneer 6-6000. Sorry—children under 18 not permitted. Daily Double closes 8:20 P.M. Season ends November 30th.

MADISON SQ GARDEN

THIS WEEK'S
SPORTS CALENDAR

Tonight 7 PM
RANGERS vs TORONTO

Next Sunday
RANGERS vs DETROIT

\$1.75, 2.50, 3.50, 4, 5, tax incl.

TICKETS NOW AT BOX OFFICE
OR BY MAIL



Tuesday 7 PM
NBA DOUBLEHEADER
KNICKS vs ST. LOUIS
SYRACUSE vs CINCINNATI

Saturday
KNICKS vs BOSTON CELTICS

with Bob Cousy and Big Bill Russell

\$1.50, 2, 2.50, 3, 3.50, 5, tax incl.

All-Time Giant Records

(Through 1958)

SCORING

Most Points Career—351, Ken Strong, 8 years; 319, Ward Cuff, 9 years; 295, Ben Agajanian, 5 years; 292, FRANK GIFFORD, 7 years.

Most Points, One Season—102, Gene Roberts, 1949.

Most Touchdowns, Career—46, FRANK GIFFORD, 7 years; 31, KYLE ROTE, 8 years; 29, Bill Paschal, 5 years.

Most Points, Game—18, Gene Roberts (four times, 1948); Frank Liebel, 1945; KYLE ROTE, 1953; BOB SCHNELKER, 1954; MEL TRIPLETT (twice), 1956.

Most Extra Points, Career—157, Agajanian.

Most Consecutive Extra Points—81, Agajanian.

Most Field Goals, Career—46, Agajanian; 36, Strong; 33, Ward Cuff.

Most Field Goals, Season—13, Agajanian, 1954.

Most Field Goals, Game—3, Ray Poole, Agajanian, SUMMERALL.

Longest Field Goal—50, Agajanian, 1957.

BALL CARRYING

Most Yards Gained, Career—3292, Eddie Price, 1950-55; 3117, Tuffy Leemans, 1936-43; 2807, FRANK GIFFORD, 1952-58; 2027, Kink Richards, 1933-39.

Most Yards Gained, Season—971, Price, 1951.

Most Yards Gained, Game—218, Gene Roberts vs. Cards, 1950.

Most Attempts, Career—926, Leemans.

Most Attempts, Season—271, Price 1951 (N. F. L. record).

Most Attempts, Game—39, Harry Newman vs. Green Bay, 1934 (N. F. L. record).

Longest Run from Scrimmage—91, Hap Moran vs. Green Bay, 1930.

FORWARD PASSING

Completions—Career: 1,219, CONERLY; Season: 162, CONERLY in 1949; Game: 36, CONERLY vs. Steelers, 1948 (N. F. L. record).

Attempts—Career: 2,435, CONERLY; Season: 305, CONERLY in 1949; Game: 53, CONERLY in 1948.

Yards Gained—Career: 16,651, CONERLY; Season: 2,175, CONERLY in 1948; Game: 363, CONERLY in 1948.

Touchdown Passes—Career: 145, CONERLY (plus two in 1956 title game); Season: 22, CONERLY in 1948; Game: 4, by CONERLY four times, by Paul Governali, Ed Danowski and Arnie Herber once each.

Longest Gain Passing—88 yards, Frank Reagan, 1947.

Highest Percentage Complete—Career, 50%, CONERLY; Season: 55.2%, CONERLY in 1957.

PASS RECEIVING

Most Caught, Career—199, FRANK GIFFORD, 7 years; 183, KYLE ROTE, 8 years.

Most Caught, Season—55, GIFFORD, 1956.

Most Caught, Game—11, GIFFORD, 1957; 9, Ray Poole (twice), Bill Swiacki.

Longest Gain—88, George Franck, 1947.

Most Touchdowns, Career—28, ROTE, 8 years; 24, Frank Liebel, 6 years.

Most Touchdowns, Season—10, Liebel, 1945, Swiacki, 1948.

Most Touchdowns, Game—3, Gene Roberts (twice), 1949; Liebel, 1945; BOB SCHNELKER, 1954.

Most Yards, Career—2,889, ROTE; 2,570, GIFFORD; 1,755, Liebel.

Most Yards, Season—734, GIFFORD, 1956.

Most Yards, Game—212, Roberts vs. Packers, 1949.

Interceptions, Career—74, Em Tunnell, 11 years (N. F. L. all-time record).

Interceptions, Season—11, JIM PATTON, 1958.

PUNTING

Longest Punt—74, Len Younce, 1943.

Highest Average, Season—47.4, Kay Eakin, 1941.

Currently active Giants capitalized.

SEASON AFTER SEASON...



She's New York's
Best Girl!

White Rock
for sparkling fine beverages

The White Rock Girl stays so popular because the brand she represents satisfies so completely! Thanks to *superior carbonation*, a White Rock drink keeps sparkling from the first pour to the last sip. So for a lighter, livelier drink every time, don't just mix it... *White Rock it!*



This Week's N. F. L. Pairings

Home Team		Visiting Team	
NEW YORK		PITTSBURGH	
Won 6, Lost 1		Won 2, Lost 4, Tied 1	
23—Los Angeles (a)	21	17—Cleveland	7
21—Philadelphia (a)	49	17—Washington	23
10—Cleveland (a)	6	24—Philadelphia (a)	28
24—Philadelphia	7	27—Washington (a)	6
21—Pittsburgh (a)	16	16—New York	21
20—Green Bay	3	24—Chicago Cards (a)	45
9—Chicago Cards	3	10—Detroit	10
—Pittsburgh		—New York (a)	
—Cards @ Minn.		—Cleveland (a)	
—Washington		—Philadelphia	
—Cleveland		—Chicago Bears (a)	
—Washington (a)		—Chicago Cards	
128	105	135	140

Home Team		Visiting Team	
CHICAGO BEARS		SAN FRANCISCO	
Won 3, Lost 4		Won 6, Lost 1	
6—Green Bay (a)	9	24—Philadelphia	14
26—Baltimore (a)	21	34—Los Angeles	0
21—Los Angeles	28	20—Green Bay (a)	21
7—Baltimore	21	34—Detroit (a)	13
17—San Francisco (a) ..	20	20—Chicago Bears	17
26—Los Angeles (a)	21	33—Detroit	7
28—Green Bay	17	24—Los Angeles (a)	16
—San Francisco		—Chicago Bears (a)	
—Detroit (a)		—Baltimore (a)	
—Chicago Cards (a)		—Cleveland (a)	
—Pittsburgh		—Baltimore	
—Detroit		—Green Bay	
131	137	189	88

WASHINGTON		CLEVELAND	
Won 3, Lost 4		Won 5, Lost 2	
21—Chicago Cards (a) ..	49	7—Pittsburgh (a)	17
23—Pittsburgh (a)	17	34—Chicago Cards (a) ..	7
23—Chicago Cards	14	6—New York	10
6—Pittsburgh	27	17—Chicago Cards	7
7—Cleveland (a)	34	34—Washington	7
23—Philadelphia (a) ..	30	38—Baltimore (a)	31
27—Baltimore	24	28—Philadelphia	7
—Cleveland		—Washington (a)	
—Green Bay (a)		—Pittsburgh	
—New York (a)		—San Francisco	
—Philadelphia		—New York (a)	
—New York		—Philadelphia (a)	
130	195	164	86

GREEN BAY		BALTIMORE	
Won 3, Lost 4		Won 4, Lost 3	
9—Chicago Bears	6	21—Detroit	9
28—Detroit	10	21—Chicago Bears	26
21—San Francisco	20	31—Detroit (a)	24
6—L. Angeles @ Milw. 45		21—Chicago Bears (a) ..	7
21—Baltimore (a)	38	38—Green Bay	21
3—New York (a)	20	31—Cleveland	38
17—Chicago Bears (a) ..	28	24—Washington (a)	27
—Baltimore @ Milw.		—Green Bay @ Milw.	
—Washington		—San Francisco	
—Detroit (a)		—Los Angeles	
—Los Angeles (a)		—San Francisco (a) ..	
—San Francisco (a) ..		—Los Angeles (a)	
105	167	187	152

PHILADELPHIA		CHICAGO CARDS	
Won 4, Lost 3		Won 2, Lost 5	
14—San Francisco (a) ..	24	49—Washington	21
49—New York	21	7—Cleveland	34
28—Pittsburgh	24	14—Washington (a)	23
7—New York (a)	24	7—Cleveland (a)	17
28—Cards @ Minn.	24	24—Phila. @ Minn.	28
30—Washington	23	45—Pittsburgh	24
7—Cleveland (a)	28	3—New York (a)	9
—Chicago Cards		—Philadelphia (a)	
—Los Angeles		—New York @ Minn.	
—Pittsburgh (a)		—Chicago Bears	
—Washington (a)		—Detroit (a)	
—Cleveland		—Pittsburgh (a)	
163	168	149	156

DETROIT		LOS ANGELES	
Won 1, Lost 5, Tied 1		Won 2, Lost 5	
9—Baltimore (a)	21	21—New York	23
10—Green Bay (a)	28	0—San Francisco (a) ..	34
24—Baltimore	31	28—Chicago Bears (a) ..	21
13—San Francisco	34	45—Green Bay @ Milw. 6	
17—Los Angeles (a)	7	7—Detroit	17
7—San Francisco (a) ..	33	21—Chicago Bears	26
10—Pittsburgh (a)	10	16—San Francisco	24
—Los Angeles		—Detroit (a)	
—Chicago Bears		—Philadelphia (a)	
—Green Bay		—Baltimore (a)	
—Chicago Cards		—Green Bay	
—Chicago Bears (a) ..		—Baltimore	
90	164	138	151

NATIONAL LEAGUE LEADERS

RUSHING

1. Brown, Cleveland	183 for 862 yds.
2. Smith, San Francisco	139 for 696 yds.
3. Matson, Los Angeles	116 for 687 yds.

PASSING

1. Guglielmi, Washington	26 of 60 for 515 yds.
2. Wade, Los Angeles	85 of 137 for 1133 yds.
3. CONERLY, NEW YORK	70 of 122 for 994 yds.

RECEIVING

1. Berry, Baltimore	44 for 643 yds.
2. Wilson, San Francisco	31 for 412 yds.
3. GIFFORD, NEW YORK	28 for 531 yds.

SCORING

1. Brown, Cleveland	60 pts.
2. Davis, San Francisco	55 pts.
3. Conrad, Cardinals	53 pts.

NATIONAL LEAGUE STANDINGS

EASTERN CONFERENCE

	W.	L.	T.	Pct.	Points For	Points Agst.
NEW YORK	6	1	0	.857	128	105
Cleveland	5	2	0	.714	164	86
Philadelphia	4	3	0	.571	163	168
Washington	3	4	0	.429	130	195
Pittsburgh	2	4	1	.333	135	140
Chicago Cards	2	5	0	.286	149	156

WESTERN CONFERENCE

San Francisco	6	1	0	.857	189	88
Baltimore	4	3	0	.571	187	152
Green Bay	3	4	0	.429	105	167
Chicago Bears	3	4	0	.429	131	137
Los Angeles	2	5	0	.286	138	151
Detroit	1	5	1	.167	90	164

PLEASE USE ENTRANCE RAMP NEAREST YOUR SEAT

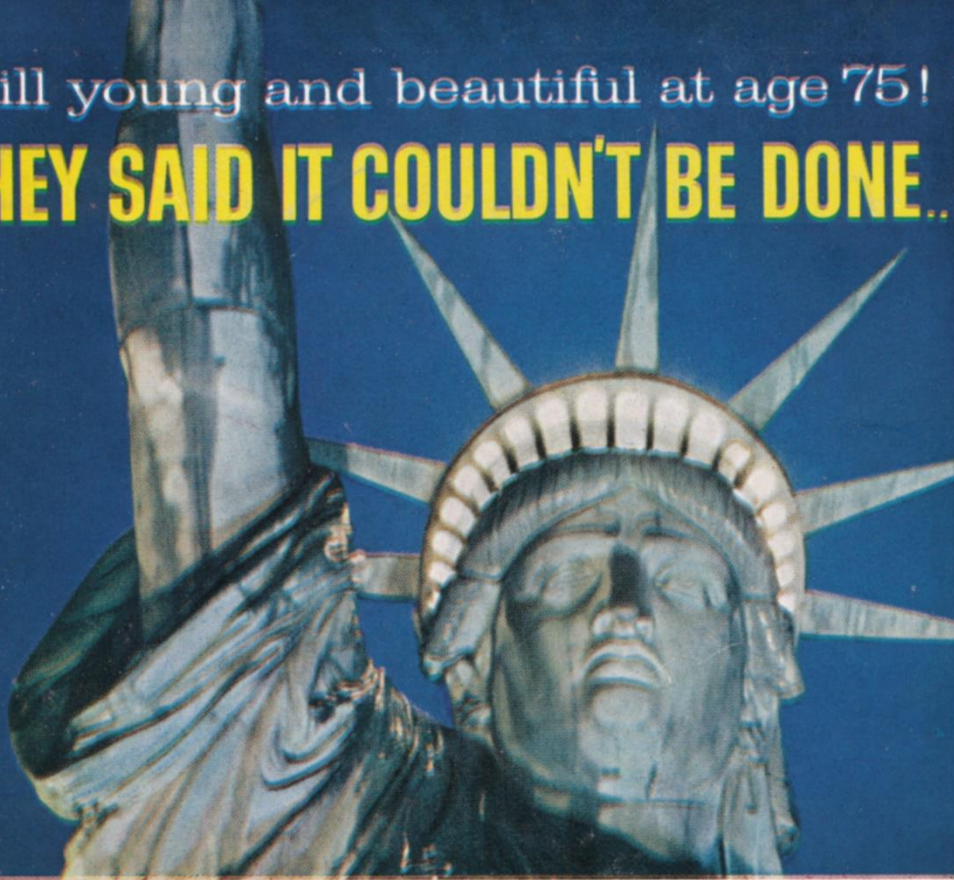


Invitation
to Relaxation The time is twilight, the mood is mellow, the drink is
7 Crown—the happiest combination to end a long day's labors. If you haven't savored these
rewards of relaxation, do so tonight, keeping in mind the spirit of the hour is the whiskey that delivers
clarity and character of taste surpassing any other. **SAY SEAGRAM'S AND BE SURE**



Still young and beautiful at age 75!

THEY SAID IT COULDN'T BE DONE...



A cigarette that's **Low** in tar
with **More** taste to it!

THEY SAID IT COULDN'T BE DONE...



**But America's
most famous
lady does it!**

No Paris design of '59 is more lovely than this ageless beauty, a gift from France 75 years ago. Miss Liberty has welcomed millions to these shores with the words, "Give me your tired, your poor, your huddled masses yearning to breathe free . . . I lift my lamp beside the golden door."



But L&M does it!

When you're in New York, be sure to see Miss Liberty. And right now, enjoy an **L&M** — Low in tar, with More taste to it. That free-drawing, pure white Miracle Tip is so advanced, **L&M** can use the light, mild premium quality tobaccos you need for full, rich tobacco taste. That's why **L&M** is *Kindest to your taste!*

Live Modern with L&M
KINDEST
TO YOUR TASTE!

©1959 LIGGETT & MYERS TOBACCO CO.