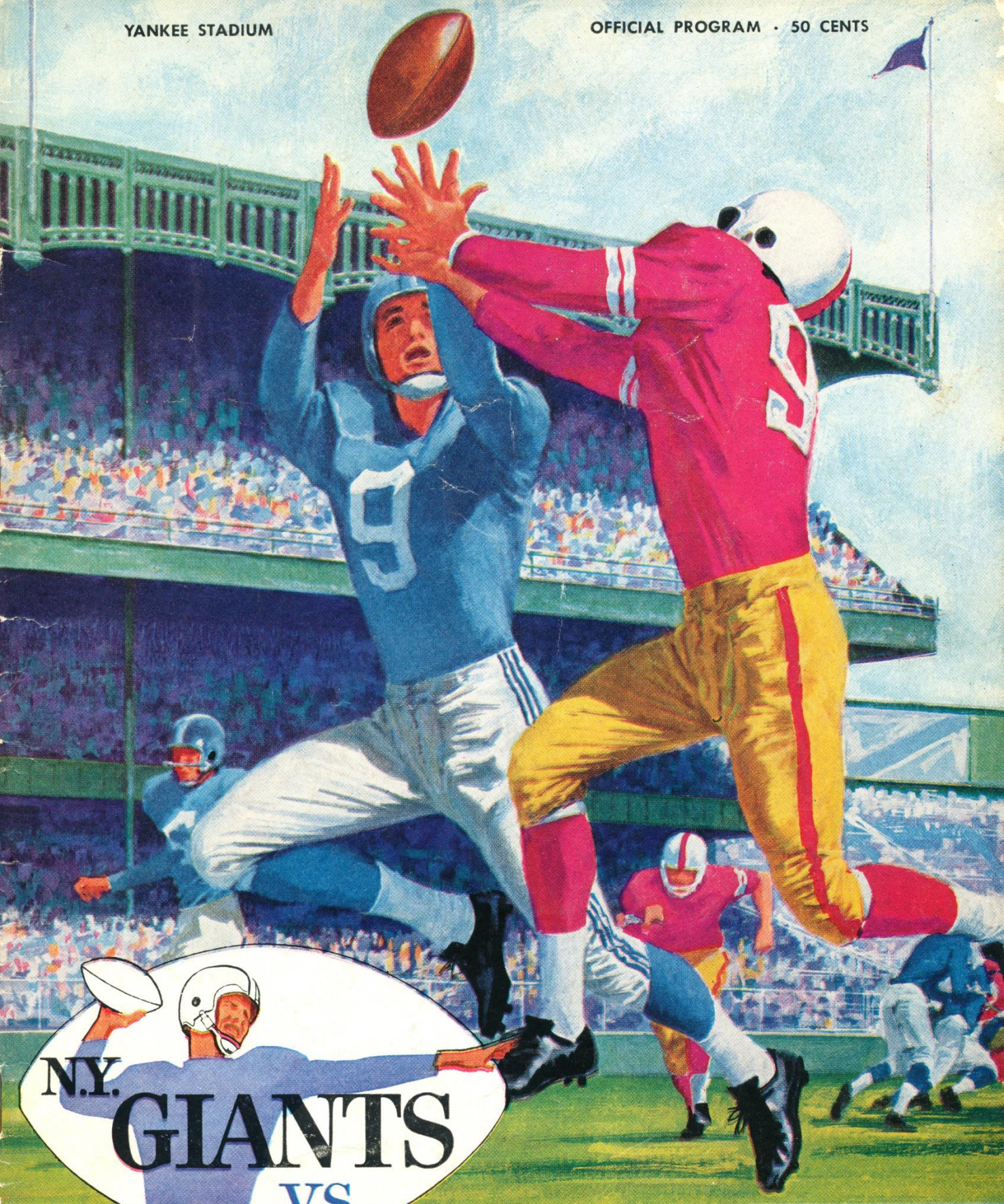


YANKEE STADIUM

OFFICIAL PROGRAM • 50 CENTS



PITTSBURGH

STEELERS

NOVEMBER 13, 1960





# Marlboro Men

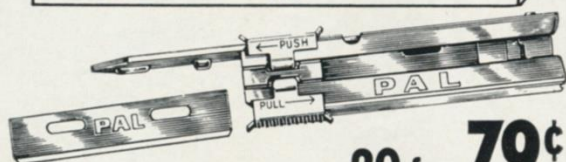
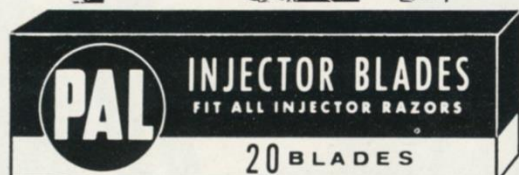
Recognize them in civvies? When they are not playing football, these five New York Giants are members of the Marlboro sales team. Here's the way they look as they travel around the country, making new friends for "the filter cigarette with the unfiltered taste". Take their advice and try Marlboro. You get a lot to like.



# PAL<sup>®</sup>

## INJECTOR BLADES

SPONSOR  
NATIONAL LEAGUE  
**PRO-FOOTBALL**  
EVERY SUNDAY  
**CBS-TV**



**20 for 79¢**

Why pay an extra 19¢ for Injector Blades? Pal Injector Blades are made of the finest steel, using the latest production methods, yet they cost 19¢ less! And, Pal Injector Blades fit all injector razors.

*Buy the Best  
for Less!*

**PAL**  
**INJECTOR BLADES**

PRECISION  PRODUCTS

A•S•R PRODUCTS COMPANY • NEW YORK 17, N. Y.

OFFICIAL PROGRAM

## NEW YORK GIANTS



**vs. PITTSBURGH STEELERS**

YANKEE STADIUM • Nov. 13, 1960

Volume 36

Number 3

### CONTENTS

Hail! . . . and Go! Go! Go! .....	3
"You Have to Love" the Game .....	5
Giant Gallery .....	7 and 13
Eagles Here Next Sunday .....	9
Coming Giant Attractions .....	9
Jottings on the Giants .....	11
Giant Blackboard: Pass Protection .....	15
Giants' Roster and Line-up .....	16
Steelers' Roster and Line-up .....	17
Looking Over the Steelers .....	19
Yankee Stadium Services .....	21
Giant Gallery .....	23
Giants' 1960 Statistics .....	25
Giants-Steelers Series Review .....	29
N. F. L. Officials' Signals .....	31
Today's N. F. L. Pairings—1960 Results .....	32
N. F. L. Standings and Leaders .....	32

### New York Football Giants

JOHN V. MARA .....	President
WELLINGTON T. MARA .....	Vice-President
RAYMOND J. WALSH .....	General Manager
TIMOTHY J. MARA .....	Secretary-Treasurer
JIM LEE HOWELL .....	Head Coach
AL SHERMAN .....	Offensive Coach
HARLAND SVARE .....	Defensive Coach
ANDY ROBUSTELLI .....	Assistant Defensive Coach
JIM PATTON .....	Assistant Defensive Coach
ED KOLMAN .....	Line Coach
KEN KAVANAUGH .....	End Coach
WALT YOWARSKY .....	Assistant Coach and Scout
JOHN JOHNSON, SID MORET and JOHN DZIEGIEL .....	Trainers
DR. FRANCIS SWEENEY .....	Physician
DR. ARTHUR CROKER .....	Dentist
DON SMITH .....	Director of Publicity

Cover Illustration by Carol Johnson

This book published by  
HARRY M. STEVENS, Inc.  
320 Fifth Avenue  
New York 1, N. Y.



# Quality



Products of *The American Tobacco Company*

"Tobacco IS OUR MIDDLE NAME"



# Hail!

## ... and

# Go!Go!Go!

**H**AIL to our Giants for having played one of the truly great games of the beneficent coaching regime of Jim Lee Howell at snowy, wind-whipped Cleveland Stadium last Sunday!

Although the Giants had beaten the Browns five times in a row, no one gave our boys much chance after their tie with the Redskins and loss to the Cardinals. Frankly, they didn't deserve much consideration off those showings.

In the Big One at Cleveland, though, it was a different story. These were the Giants at their best—overwhelming on defense, sharp on attack and quick to take advantage of opportunities in both phases of play.

In a take-charge performance all the way, the Giants clamped down so firmly on Cleveland's attack that only twice in the con-



**THEY LEAD THE GIANTS:** Kyle Rote (left), offensive captain, and Andy Robustelli, defensive captain.

test were the Browns able to put together two first downs. With the ball, our boys staged three sustained scoring marches and were driving to another tally when time ran out. They moved well at other times, too, in their best offensive display of the season. The 17-13 score doesn't begin to tell their superiority.

Andy Robustelli and his defensive platooners were magnificent,

with Jim Katcavage the outstanding hero, perhaps, as the game shaped up on television. But to watchers here, it was the offensive platoon that rated the loudest kudos.

Charlie Conerly, back at the throttle, called one of his finest games. Mel Triplett put Jimmy Brown in the shadow with his thunderous running. Frank Gifford was the darting, dodging, resourceful Gifford of old. Joe Morrison and Kyle Rote made important contributions, too.

In this corner, though, top honors belong collectively to the offensive line. Rosie Brown, Darrell Dess, Ray Wietecha, Jack Stroud, Frank Youso and Bob Schnelker, at the tight end, all but annihilated Cleveland's forwards with their explosive blocking.

There have been days when we felt these good men and true had lost that little something extra that had distinguished them in past campaigns. They staged a performance that made the entertainment of such doubts a shameful thing. Hats off to them!

Enough of congratulations. . . . There's still work to be done and a lot of it. We can't think of a better way of starting than to "beat them Steelers." After all, New York has a debt to pay to Pittsburgh. Remember the World Series!

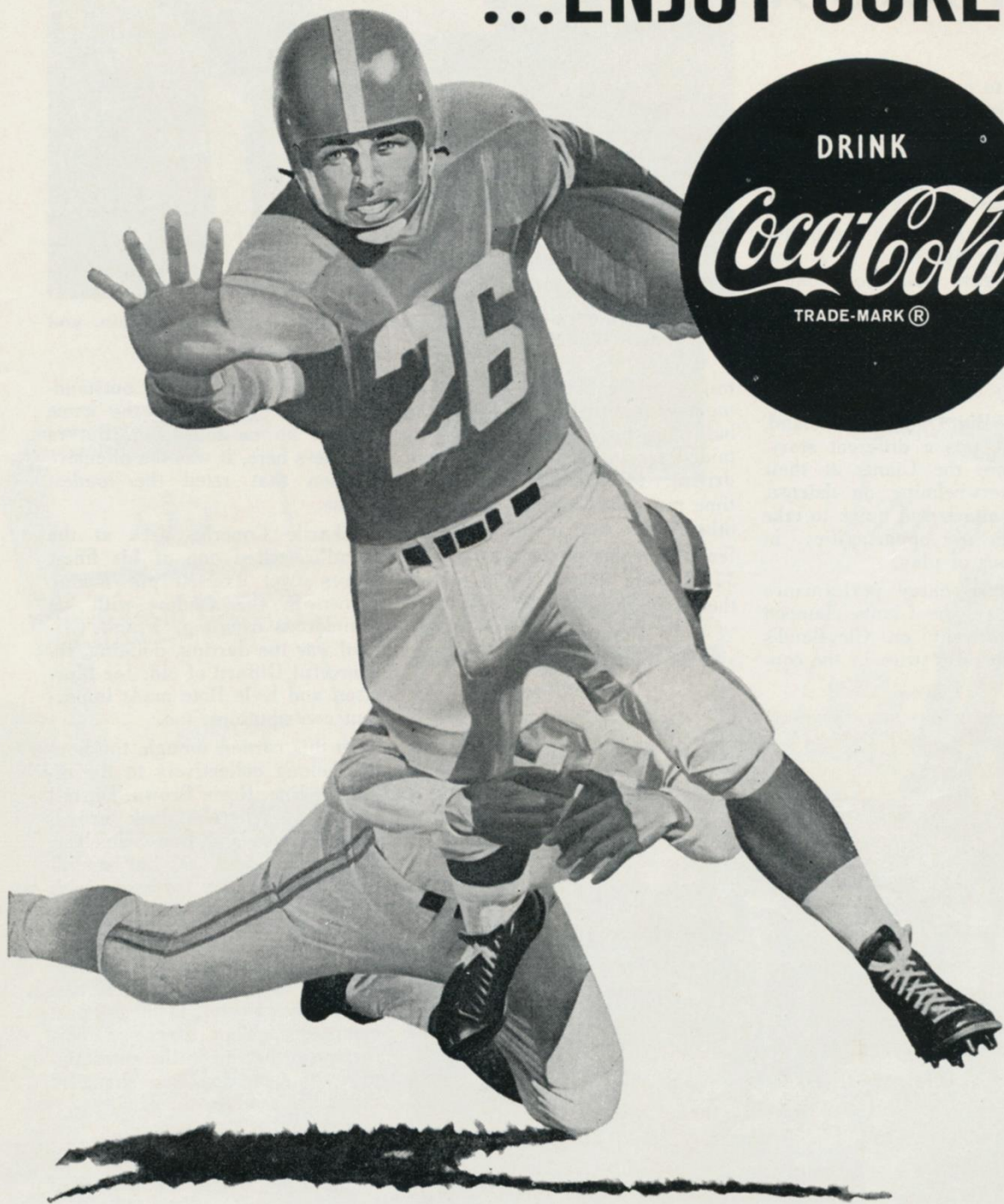


**READ ALL ABOUT IT:** Giant president Jack Mara receives copies of new books authored by members of the Giants. Publicity director Don Smith (left) delivers *THE NEW YORK GIANTS* (Coward-McCann), while quarterback Charlie Conerly presents *THE FORWARD PASS* (E. P. Dutton), written in collaboration with Tom Meany.

**PLEASE USE ENTRANCE RAMP NEAREST YOUR SEAT**



**BE REALLY REFRESHED!**  
**...ENJOY COKE!**





# "You Have to Love" the Game

By BILL WALLACE  
New York Herald-Tribune

**EDITOR'S NOTE:** This excellent recent story by Bill Wallace, who covers the Giants for the Herald-Tribune, not only tells the story of Joe Morrison, one of the rising young Giants, but also paints a vivid picture of a pro football player's life and attitude toward the game.

OF all the players on the N. Y. Giants, the one with the brightest future is 23-year-old Joe Morrison from Lima, Ohio. Midway through his second play-for-pay season, Morrison has proven to be a very good football player and perhaps in time he will become a great one.

Ahead lies the adulation of the New York crowds, bigger pay checks and unlimited opportunities in the field of ancillary rights (endorsements, etc.) exploited so profitably by today's hero, Frank Gifford.

In the back of his good mind, Morrison undoubtedly is aware of the financial possibilities but he insists that money, as such, plays a very small part in his present football life. "Sure, you play for pay," said Morrison yesterday, "but I can't believe anybody plays football just for money. You have to love it."

## Must Be Devoted

It is Joe's contention that the pro game makes such extraordinary demands, physically and mentally, that a successful player must become a dedicated one. "You have to set your mind to what you're doing and think of nothing else. You have to concentrate all the time."

Morrison is dedicated and he lives the strange, introverted life of the pro player in the big city. Back home in Ohio there is Mrs. Morrison, a house, two sons and

a good job with a steel company. From mid-July to late December, Joe will get home once, maybe twice. "My wife, she understands how it has to be."

In New York ("It's a nice town



JOE MORRISON

but I wouldn't want to live here"), Morrison resides in a small one-room apartment shared by two teammates, Darrell Dess and Jim Leo, at the Concourse-Plaza Hotel in the Bronx. The apartment has a kitchenette and Morrison does a lot of cooking for the trio. "Steaks, chops, hamburgers. They wash up."

During the week football prac-

tice usually takes from 10 to 3:30, meetings, field work, movies. Then sack time. "We're great sleepers." At night comes study of the Giants' play book, a movie, some bowling, a call home, very seldom a visit downtown. And that's how it is from October to December with everything concentrated toward those vital Sundays, game days.

Morrison was a big wheel at the University of Cincinnati, a quarterback and halfback drafted third by the Giants in 1959. He had read all about those famous names, Gifford, Conerly, Rote, and wondered, when reporting as an anxious rookie, just what they would be like.

They were fine. "On this team," said Joe, "there's an understanding that rookies get all the help they want. I was green and puzzled. Alex Webster, Gifford, Don Chandler, they all helped me. And this year I helped Jimmy Webster. I guess I didn't help him enough."

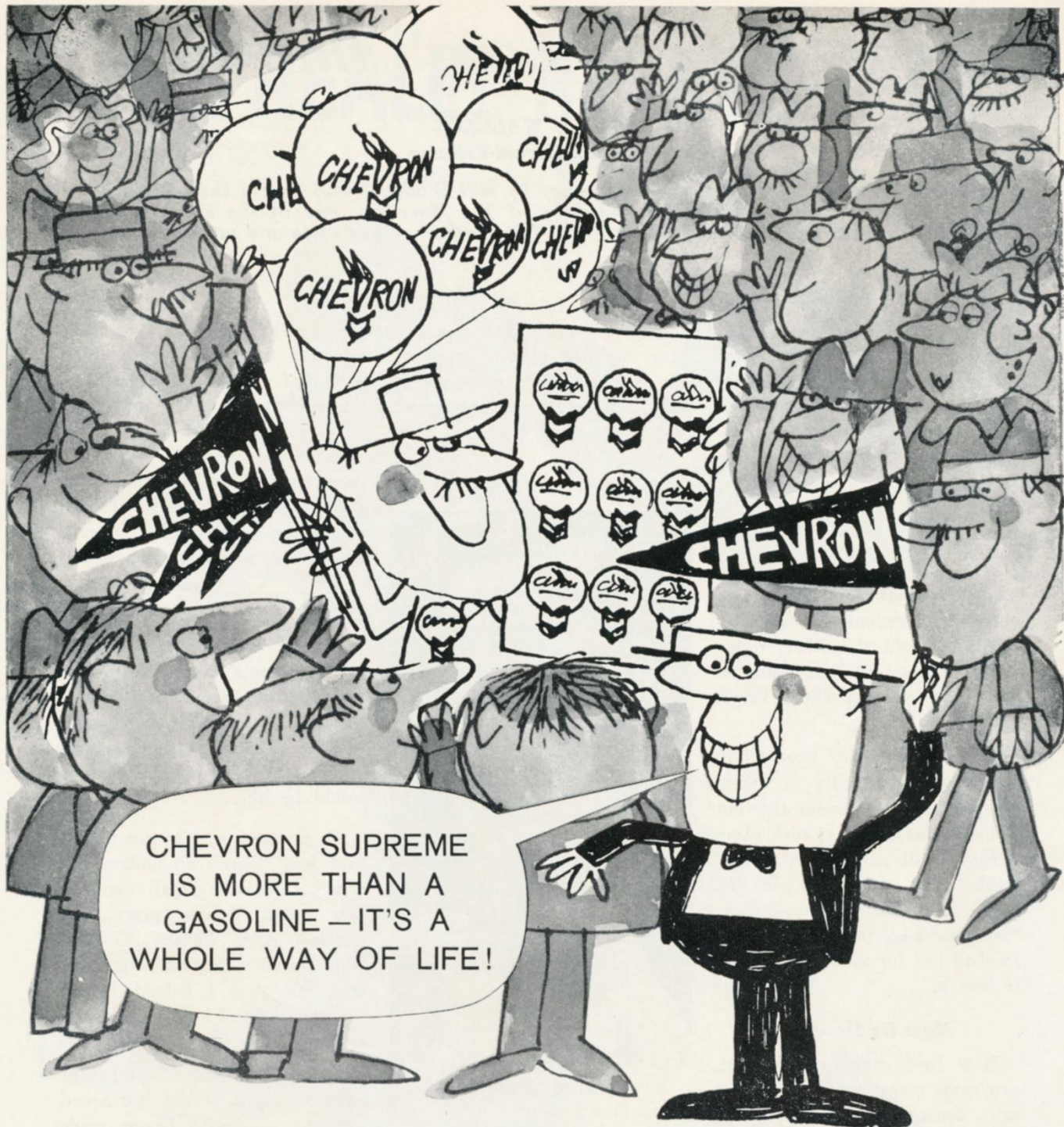
Jimmy, younger brother of Alex, was one of the last squad cuts the all-veteran Giants made in late September.

The sense of belonging to a great team has now come to Morrison as well it should. "A year ago I wouldn't have dared to make a suggestion about how to run a play or take an advantage of a defense. Now I do."

It is hard to imagine just where the Giants would be without Joe.

PLEASE USE ENTRANCE RAMP NEAREST YOUR SEAT





You've gone too far this time, Hy Finn. Sure, Chevron Supreme fans are the most loyal anywhere. They're always bragging about the top-form performance Chevron Supreme gives 'em. They use their Chevron Credit Cards all the time, too. But really, Hy, there *are* other things in life. Like RPM Supreme, the motor oil that actually halts engine wear.



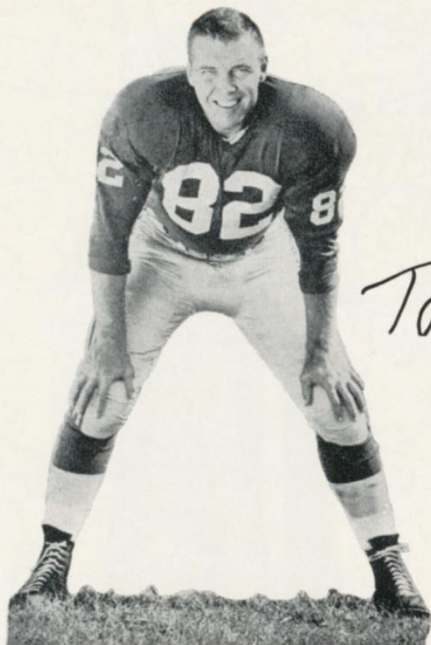
PRODUCTS OF  
CALIFORNIA  
OIL COMPANY



TM'S "RPM," "CHEVRON," "CHEVRON SUPREME," CHEVRON DESIGN®



# Giant Gallery



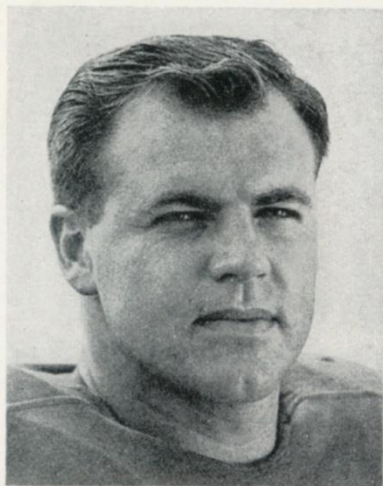
*Tom Scott*

The Giants acquired **Tom Scott (82)** in a 1959 pre-season trade with the Eagles. A graduate of Virginia, where he also was an All-America in lacrosse, Scott is a rugged, knowing outside line-backer. A nephew of Lester Scott of Madison Square Garden's executive staff, Tom lives in Abington, Pa., with his wife, Joan, and their five youngsters.



*Proverb Jacobs*

The No. 2 draft choice of the Eagles in 1958, **Proverb Jacobs (73)**, was signed by the Giants as a free agent last spring. The 225-pound California graduate fits into the picture as a spare tackle. He is serviceable on both offense and defense. In a pinch, he also could handle the place-kicking assignment. He can really boom the ball.



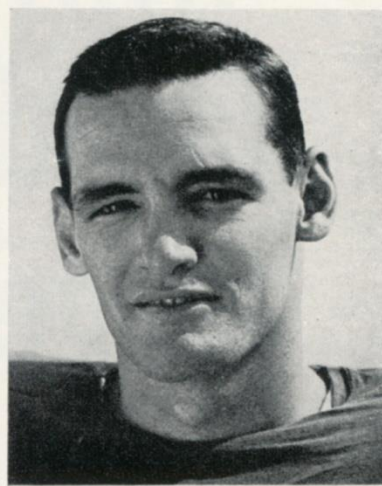
*Bob Schmidt*

**Bob Schmidt (52)** has been a reliable handyman on the Giant offensive line for three seasons. On frequent occasions, he has filled in at the tackles for Rosie Brown and Frank Youso. He also is the No. 1 replacement for Ray Wietecha at center. At Minnesota, Bob played both at tackle and end. He was drafted by the Cardinals in 1958.



*Geo Shaw*

The bonus draft choice of the Colts in 1955 after a brilliant varsity career at Oregon, **George Shaw (15)** was Baltimore's regular quarterback for three years. He lost out to Johnny Unitas while injured and was traded to the Giants in 1959. He did fine work in spots last year and has been their prime mover this season.



*Dick Lynch*

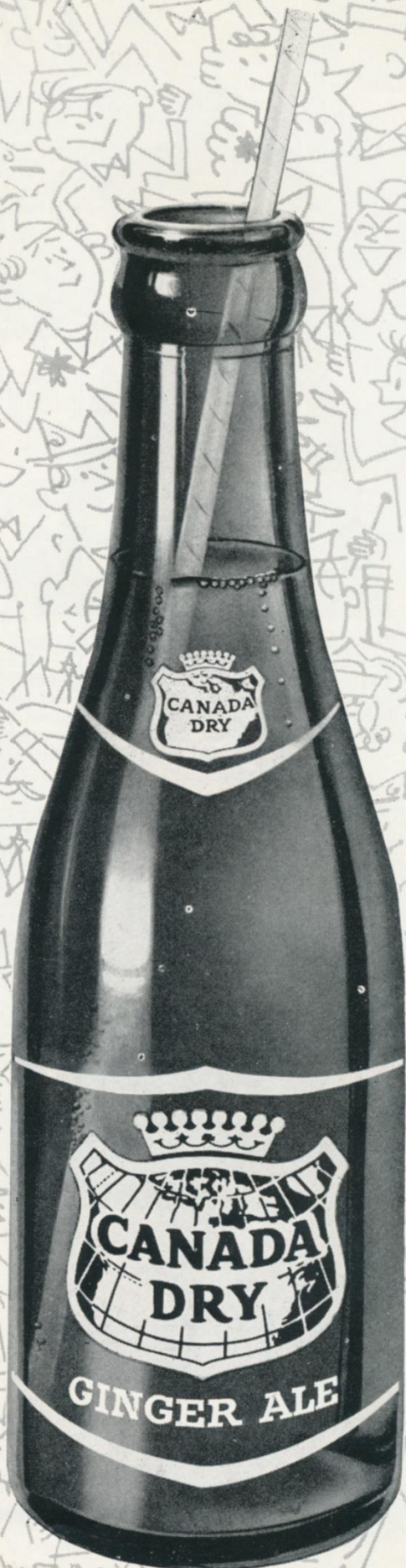
After one season with the Redskins, **Dick Lynch (22)** came to the Giants via a 1959 trade. He moved right into the defensive backfield, at right half, and has done a bang-up job. A Jerseyan, from Bound Brook, Dick won varsity fame at Notre Dame in 1957 by scoring the touchdown that ended Oklahoma's record 47-game winning streak.

PLEASE USE ENTRANCE RAMP NEAREST YOUR SEAT



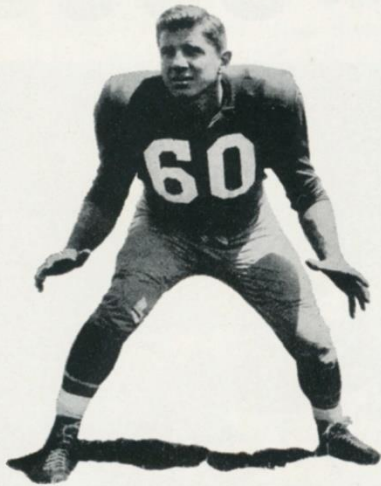
# **Spectating is more sparkling ...with Canada Dry Ginger Ale...**

**So is socializing after the game  
with Canada Dry Ginger Ale  
in your tall drinks.**





# Eagles Here Next Sunday



CHUCK BEDNARIK

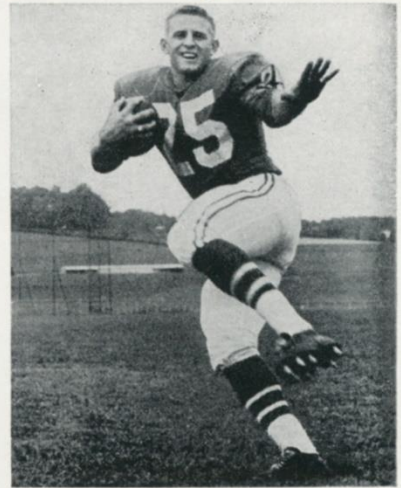
**F**LYING on stronger wings than in several years, the predatory Philadelphia Eagles will swoop into Yankee Stadium to meet the Giants next Sunday.

Those who televised the great performance the Eagles staged in beating the Browns three weeks ago don't have to be told that this promises to be one of the most exciting contests of the season.

The Eagles, coached by the canny Buck Shaw, will present a star-studded offensive cast led by Norm Van Brocklin, passer extraordinary; Tommy McDonald, Pete Retzlaff and Bobby Walston, breakaway receivers; Clarence Peaks, Billy Barnes, Ted Dean and



NORM VAN BROCKLIN



TOMMY McDONALD

other dangerous runners.

Their hard-bitten defensive unit includes Bob Pellegrini, Tom Brookshier and a 1958-59 All-America, Maxie Baughan of L.S.U. Likely to bob up on either unit, or on both, is the amazing Chuck Bednarik, who at age 35, played 59 destructive minutes against the Browns.

Don't miss this game! It should be a dilly!

## Coming Giant Attractions at Stadium

GAME

**4**

NOV. 20

PHILADELPHIA  
EAGLES

TICKET  
PRICES:

**\$5.00**

BOX  
SEATS

**\$4.00**

RESERVED  
SEATS

### Here's Where to Buy Tickets in Person

YANKEE STADIUM

161st St. and River Ave.  
Bronx, N. Y.  
Mon.-Sat. 9-5 P.M.

YANKEE TICKET OFFICE

North Mezzanine  
Grand Central Station  
Mon.-Fri., 10-6 P.M.; Sat., 10-4

OR

DAVEGA STORES

Jamaica—163-24 Jamaica Avenue  
Hempstead—45 Main Street

Hackensack—325 Main Street  
White Plains—175 Main Street

Newark—110 Market Street

ALSO

ANDY ROBUSTELLI'S SPORTS SHOP  
in Stamford, Conn.

GAME

**5**

DEC. 4

DALLAS  
COWBOYS

GAME

**6**

DEC. 18

CLEVELAND  
BROWNS

ADDRESS ALL  
MAIL ORDERS TO:

TICKET MANAGER  
NEW YORK FOOTBALL GIANTS  
10 Columbus Circle  
New York 19, N. Y.

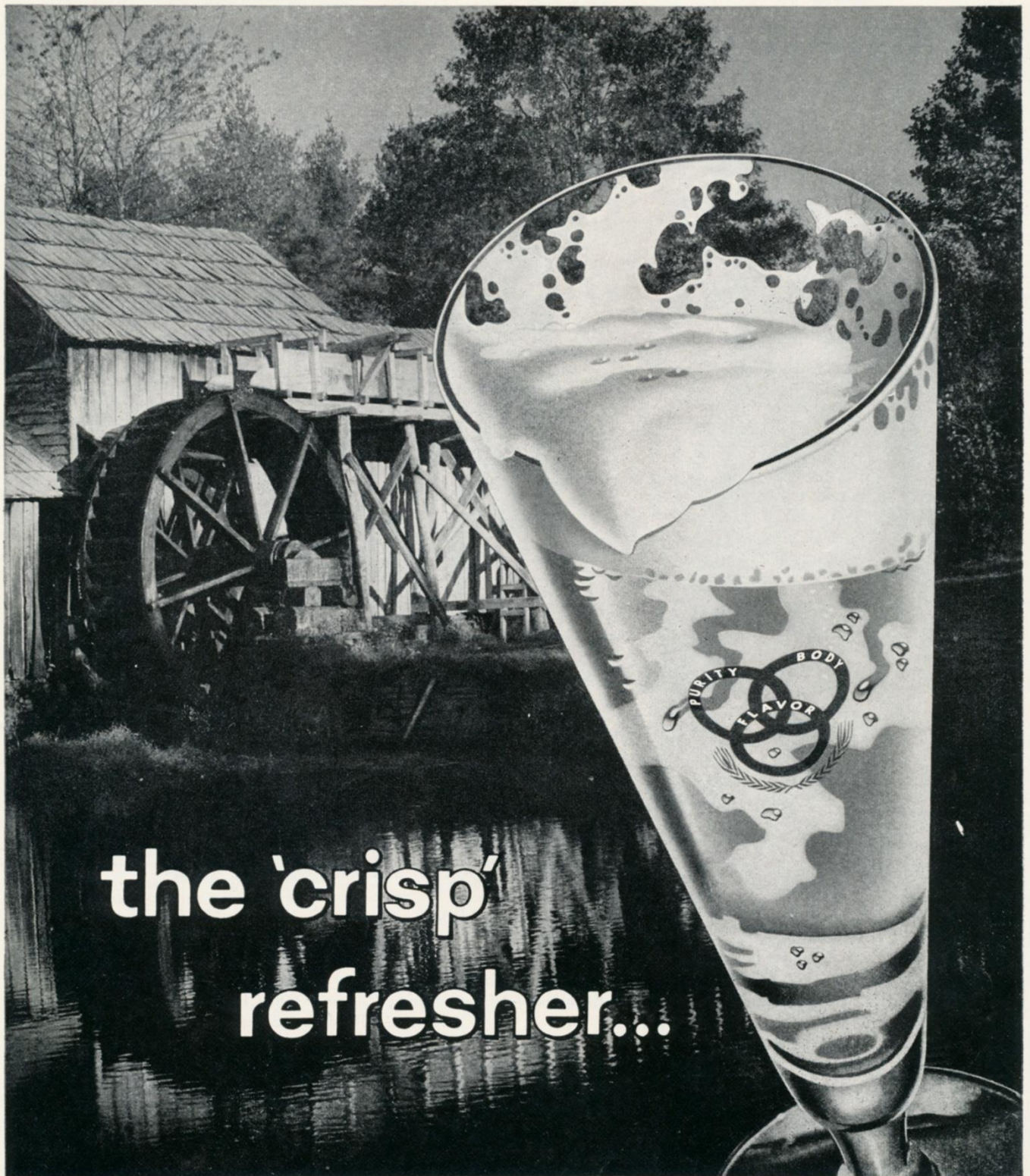
(Add 50c for mailing and handling)

Make check or money order payable: NEW YORK FOOTBALL GIANTS, INC.

*Tickets Now on Sale at Advance Sale Windows in Main Lobby of Stadium*



# Ballantine LIGHT LAGER beer



the 'crisp'  
refresher...

® Is a Reg. T. M. of P. Ballantine & Sons, Newark, N. J.

the light beer with true lager flavor!

*No wonder Ballantine is the largest-selling beer in the East.*



# Jottings

**T**HE Midland Park, N. J., High School marching band, directed by Donald S. George, will provide the halftime entertainment today. . . . Joe Morrison scored another "double" during the Giants' last home game against the Cardinals. . . . Joe won the Coro Jewelry Award as the outstanding Giant player and also the Van Heusen Pleasure-Wear Award. . . . Winner of the Coro defensive award was halfback Lindon Crow.

Pro grid fans won't want to miss the weekly New York Giants Huddle radio show on CBS every Thursday night at 9:45 P.M. . . . Place-kicking star Pat Summerall is the man at the mike. . . . Halfback Frank Gifford also has a weekly show—the N. Y. Giant Clinic—which originates from the Stadium on Saturdays.

The Section Five Club of Yankee Stadium will stage a dinner-dance in honor of Andy Robustelli on Sunday evening, December 4, at the Biltmore Hotel.



**CHEER, CHEER**—These young ladies are the Giant cheerleaders. The roster, from left to right, top row: Connie Lucca, Beverly Meyer, Connie Walsh, Mary Cassidy, Joan Nitrate and Chris Noel. Bottom row: Ann Dermody, Erin Roach, Kitten Cashman, Muffin Fitzpatrick. Their costumes are Perky Outfits, by Mona Roset for Modern Juniors.

. . . Tickets for the gala event are priced at \$12.50 per person. . . . Robustelli also will be honored that day by fans, friends and teammates prior to the Dallas game.

Bobby Layne of the Steelers will stay over in New York to attend

tomorrow's luncheon of the Pro Quarterback Club. That's the new luncheon group of business men and sports fans organized by Kyle Rote and James A. Farley, Jr. It meets each Monday after a Giant home game at Leone's Restaurant.



## HOTEL MANHATTAN HEADQUARTERS FOR PROFESSIONAL TEAMS IN NEW YORK CITY

New York's newest . . . Hotel Manhattan offers 1400 air conditioned guest rooms, each with television and radio. Known as the "Home of Champions," this magnificent skyscraper hotel is ideally located in the heart of Times Square. Meet your friends at the Manhattan Bar or the new Playbill Restaurant for cocktails, luncheon, dinner and supper.

Express Subway Trains Speed You to  
Yankee Stadium from the Private  
Subway Entrance of Hotel Manhattan

**FRANK W. KRIDEL**

Executive Vice President and General Manager



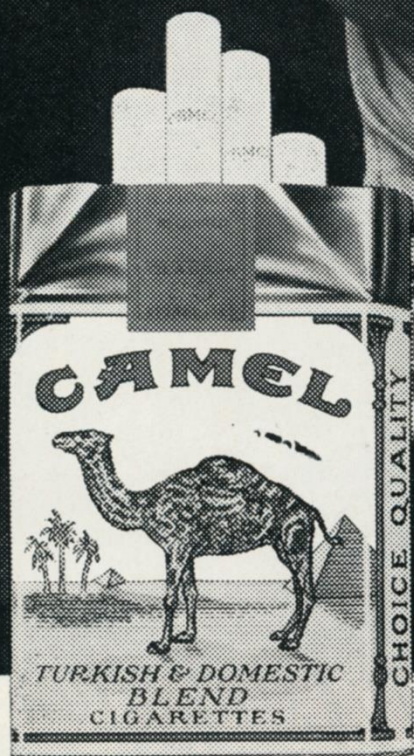
**HOTEL** *Manhattan*  
44TH TO 45TH STREETS  
AT EIGHTH AVENUE • JUDSON 2-0300





# Have a real cigarette—have a **CAMEL**

*Dick Nolan*  
PROFESSIONAL FOOTBALL STAR



**The best tobacco makes the best smoke!**

R. J. Reynolds Tobacco Co., Winston-Salem, N. C.



# Giant Gallery



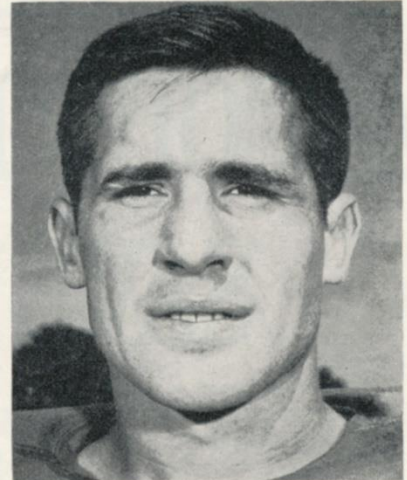
*Lee Grosscup*

Backing up Charlie Conerly and George Shaw at quarterback for the Giants is **Lee Grosscup (11)**. This young man from Utah is a rookie in name only. The Giants' No. 1 draft choice in 1959, he was on the "taxi squad" last year. A brilliant passer and clever ball-handler, he'll be heard from. As a collegian, he completed 20 passes vs. Army in 1957.



*Jim Leo*

**Jim Leo (30)**, a 1960 addition to the Giant roster, hails from Cincinnati, where he was a teammate of Joe Morrison for two years. The Giants' No. 3 draft selection, he distinguished himself against the Colts in the College All-Star game and is doing good work on the Giants' special units. He's also a capable end and linebacker.



*Bob Simms*

Rutgers has provided the Giants with an excellent rookie end in **Bob Simms (83)**. Blessed with size and speed, Bob can do a good job at either the "tight" or "loose" end. The Giants would not hesitate to use him on defense, either. As a member of the special unit that covers kicks, he has made some rib-rattling tackles. He's a man to watch.

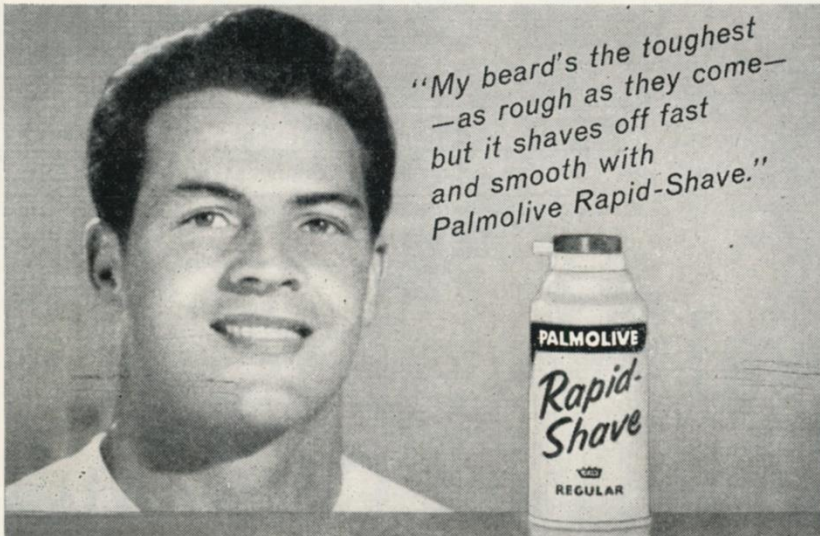


Take a tip  
from  
**FRANK GIFFORD**

—backfield sensation of  
the New York Giants

## Get Palmolive Rapid-Shave

**SUPER-MOISTURIZED FOR THE FASTEST, SMOOTHEST SHAVES POSSIBLE**



*"My beard's the toughest  
—as rough as they come—  
but it shaves off fast  
and smooth with  
Palmolive Rapid-Shave."*



**MAKE IT FAST AND MAKE IT SMOOTH—  
USE RAPID-SHAVE IN THE MORNING!**

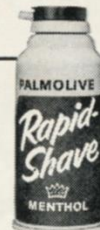
**Super-Moisturized Lather  
Soaks Whiskers With 17  
Beard-Softening Ingredients**



Rich Rapid-Shave lather is super-moisturized with 17 separate beard-softening ingredients that start to work on contact.



Rapid-Shave sets you up for a fast shave... a smooth shave... a complete shave... a comfortable shave from start to finish.



Try  
Rapid-Shave  
Regular  
or  
Rapid-Shave  
Menthol





# NEW KIND OF CHECKING ACCOUNT REMEMBERS TO SAVE FOR YOU { *with interest on your savings too* }

## New CHECK'nSAVE account at Chemical New York gives complete checking service plus painless savings

If you're one of the people who want to save but always seem to put it off, here's good news for you.

Now you can hang on to part of every paycheck in spite of yourself. Just come in and open a CHECK'nSAVE account at Chemical New York. This new kind of account lets you write the checks you want, and saves for you automatically, as well. And, of course, you get interest on your savings compounded every three months.

**How it works.** Just tell us how much a month you want to save—from \$10 on up. Then, on the 5th or 18th of the month—whichever is best for you—we automatically tuck that amount away for you.

We take care of all the details. No paper work, no standing in line, no bookkeeping for you. Every month you get a notice of the money transferred to your savings account—and a statement on your checking account (either Regular or Special).

**CHECK'nSAVE at any of our 105 offices.** You can open your CHECK'nSAVE account in just 15

minutes at any of our 105 offices in Greater New York. Wherever you go, you'll get the friendly, neighborhood bank service you'd expect from "the New York Bank with the hometown touch."

So, if you want to hang on to more than your check stubs, get started now on a program of regular and painless saving, through a CHECK'nSAVE account at Chemical New York.

**Pick your goal—then CHECK'nSAVE for it.**

Your goal	Amount to set aside each month		
	1 year	2 years	3 years
\$200	\$16.67		
300	25.00	\$12.50	
500	41.67	20.83	\$13.89
1000	83.33	41.67	27.77
(Does not include interest compounded every quarter)			

*Member Federal Deposit Insurance Corporation*

**Chemical Bank**  
**New York Trust Company**  
*The New York Bank with the Hometown Touch*

105 Offices In  
Greater New York  
Founded 1824



# Giant Blackboard: Pass Protection

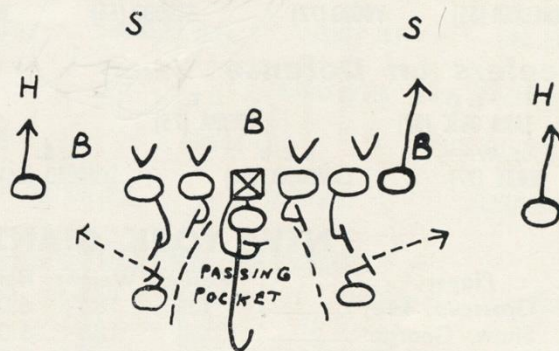
**I**F there is any phase of football that the pros stress as much as defensive pass coverage, it is offensive pass (or passer) protection. This is fundamental, because having a good passer and good receivers doesn't mean a thing if the passer can't get the ball away before he's clobbered.

The staple pass in pro football is the so-called dropback pass, in which the quarterback retreats into passing position immediately on taking the center snap, either faking hand-offs en route or just getting back and getting set without deception.

The dropback pass is favored over the rollout, or running, quarterback pass for these reasons: (1) on dropback passes, the quarterback has a better chance to get set and spot his target; (2) it is easier to organize protection for him and (3) continually exposing a quarterback to enemy fire on roll-outs increases the risk of injury.

With an offensive team lined up in the standard pro split backfield, counter-set flanker formation and the defense deployed in the conventional pro 4-3 defense, the basic principles of pass protection are illustrated in the accompanying diagram, prepared with the assistance of Allie Sherman, the offensive coach of the Giants.

The key to good pass protection is the formation of an impenetrable barrier of blockers so the passer can throw from what we label the "passing pocket." (Sherman calls it the "critical alley.")



As the diagram shows, this is done as follows: the offensive guards block the defensive tackles playing opposite them, giving ground slightly but keeping inside position; the offensive center retreats, braced to meet the charge of a blitzy linebacker, or to seal holes as needed.

Depending on the pass pattern in use, both, one or neither of the halfbacks will assist in forming the pocket. They take one step forward, against the chance of a defender's breaking through the middle, then turn to the outside.

This may seem very simple—and in conception it is. But there's nothing simple about getting into proper blocking position, and holding it, against a ripsnorting 250-pound rushliner who wants in. Watch the war that goes on in the "alley."

"He tried to take my

**Drake's**  
**COOKIES"**





## Giants on Offense

R. H. MORRISON (40) F. B. TRIPLETT (33) Q. B. CONERLY (42) L. H. GIFFORD (16) KICK-OFF 2:05 P.M.  
 R. E. SCHNELKER (85) R. T. YOUSO (72) R. G. STROUD (66) C. WIETecha (55) L. G. DESS (62) L. T. BROWN (79) L. E. ROTE (44)

## Steelers on Defense

L. E. TARA'OVIC (82) L. T. KRUPA (75) M. L. B. HENRY (37) R. T. STAUTNER (70) R. E. SMITH (77)  
 L. W. DERBY (27) L. L. B. CAMPBELL (66) L. S. SCUDERO (26) R. S. MOEGLE (47) R. L. B. REGER (50) R. W. BARNETT (43)

## NEW YORK GIANTS ROSTER

No.	Player	Position	Weight	Height	Age	College	Yrs. Pro
11	Grosscup, Lee	QB	185	6:01	23	Utah	1
15	Shaw, George	QB	180	6:00	27	Oregon	6
16	Gifford, Frank	HB	200	6:01	30	U. S. C.	9
20	Patton, Jimmy	HB	180	5:10	28	Mississippi	6
21	Riley, Lee	HB	190	6:01	27	Detroit	5
22	Lynch, Dick	HB	200	6:01	24	Notre Dame	3
24	King, Phil	HB-FB	225	6:04	24	Vanderbilt	3
25	Nolan, Dick	HB	185	6:01	28	Maryland	7
26	Sutton, Ed	HB	207	6:01	25	North Carolina	4
29	Webster, Alex	HB	225	6:03	29	N. Carolina State	6
30	Leo, Jim	E-LB	215	6:01	22	Cincinnati	1
33	Triplett, Mel	FB	215	6:01	28	Toledo	6
34	Chandler, Don	HB	205	6:02	25	Florida	5
40	Morrison, Joe	FB-HB	194	6:01	22	Cincinnati	2
41	Crow, Lindon	HB	205	6:01	27	U. S. C.	6
42	Conerly, Charles	QB	185	6:01	39	Mississippi	13
44	Rote, Kyle	E	200	6:00	32	S. M. U.	10
48	Stits, Bill	HB	195	6:00	28	U. C. L. A.	8
52	Schmidt, Bob	C-T	245	6:04	24	Minnesota	3
55	Wietecha, Ray	C	225	6:01	31	Northwestern	8
62	Dess, Darrell	G	235	6:00	25	N. Carolina State	3
66	Stroud, Jack	T-G	235	6:01	31	Tennessee	8
70	Huff, Sam	LB	230	6:01	25	West Virginia	5
72	Youso, Frank	T	260	6:04	24	Minnesota	3
73	Jacobs, Proverb	T	255	6:05	25	California	2
74	Cordileone, Lou	T-G	240	6:00	23	Clemson	1
75	Katcavage, Jim	E	230	6:03	25	Dayton	5
76	Grier, Roosevelt	T	285	6:05	27	Penn State	5
77	Modzelewski, Dick	T	260	6:00	29	Maryland	8
78	Boll, Don	T	272	6:02	33	Nebraska	8
79	Brown, Roosevelt	T	245	6:03	27	Morgan State	8
81	Robustelli, Andy	E	230	6:01	32	Arnold	10
82	Scott, Tom	LB	220	6:02	30	Virginia	8
83	Simms, Bob	E	210	6:01	22	Rutgers	1
84	Svare, Harland	LB	215	6:00	29	Washington State	8
85	Schnelker, Bob	E	215	6:04	30	Bowling Green	8
88	Summerall, Pat	E	235	6:04	30	Arkansas	9
89	Livingston, Cliff	LB	215	6:03	30	U. C. L. A.	7

### GIANT SPECIALISTS

Punting—Chandler (34), C Kimber (86).  
 PAT, FG and Kicks-Offs—Su Chandler (34).  
 Holding for PAT, FG—Co  
 Kick Returns—Crow (41),  
 Riley (21), Sutton (

### OFFICIALS

#### Referee

(9) Emil Heintz, Penns

#### Umpire

(12) Cletus Gardner, V

#### Head Linesman

(30) George Murphy, U

#### Back Judge

(41) Jack Nix, U. S

#### Field Judge

(56) Norman Schachter

### STEELER SPECIALISTS

Punting—Green (8  
 PAT, FG and Kick-Offs—Re  
 Layne (22).  
 Holding for PAT, FG—Scude  
 Layne (22) FG.  
 Kick Returns—Carpente  
 Scudero (26), Moegle

PLEASE USE ENTRANCE RAMP N

You deserve

# Calvert

...the whiskey with a "Stand  
 insured for one mill



**KICK-OFF**  
**2:05 P.M.**

R. H. DIAL (84)	F. B. SCALES (34)	Q. B. LAYNE (22)	L. H. TRACY (30)
R. E. CARPENTER (40)	R. T. VARRICHIONE (74)	C. BEATTY (57)	L. T. JAMES (55)
	R. G. NISBY (65)	L. G. SANDUSKY (62)	L. E. ORR (86)

## Steelers on Offense

## Giants on Defense

L. E. KATCAVAGE (75)	L. T. MODZELEWSKI (77)	M. L. B. HUFF (70)	R. T. GRIER (76)	R. E. ROBUSTELLI (81)
L. W. CROW (41)	L. L. B. LIVINGSTON (89)	L. S. NOLAN (25)	R. S. PATTON (20)	R. L. B. SVARE (84)
				R. W. LYNCH (22)

### NT SPECIALISTS

andler (34), Conerly (42),  
Kimber (86).  
Kicks-Offs—Summerall (88),  
Chandler (34).  
PAT, FG—Conerly (42).  
s—Crow (41), Stits (48),  
y (21), Sutton (26).

### OFFICIALS

#### Referee

Heintz, Pennsylvania

#### Umpire

Gardner, Villanova

#### Head Linesman

George Murphy, U. S. C.

#### Back Judge

Jack Nix, U. S. C.

#### Field Judge

erman Schachter, Alfred

### ELER SPECIALISTS

ting—Green (89).  
Kick-Offs—Rechichar (44),  
Layne (22).  
PAT, FG—Scudero (26) PAT,  
Layne (22) FG.  
turns—Carpenter (40),  
ro (26), Moegle (47).

## PITTSBURGH STEELERS ROSTER

No.	Player	Position	Weight	Height	College	Yrs. Pro
10	Bukich, Rudy	QB	200	6:02	U. S. C.	5
20	Morris, Jack	HB	190	5:11	Oregon	3
22	Layne, Bobby	QB	210	6:02	Texas	13
26	Scudero, Joe	HB	174	5:10	San Francisco	6
27	Derby, Dean	HB	180	6:00	Washington	4
28	Johnston, Rex	HB	195	6:01	U. S. C.	1
30	Tracy, Tom	HB	205	5:09	Tennessee	5
34	Scales, Charles	FB	210	5:11	Indiana	1
35	Johnson, John Henry	FB	215	6:02	Arizona St. (Tempe)	6
36	Hayes, Rudy	LB	215	6:00	Clemson	2
37	Henry, Mike	LB	215	6:02	U. S. C.	2
39	Krutko, Larry	FB	225	6:00	West Virginia	2
40	Carpenter, Preston	HB	205	6:02	Arkansas	5
42	Wren, Lowe	HB	205	6:00	Missouri	5
43	Barnett, Tom	HB	190	5:11	Purdue	2
44	Rechichar, Bert	HB	210	6:01	Tennessee	8
46	Williamson, Fred	HB	215	6:02	Northwestern	1
47	Moegle, Dicky	HB	195	6:01	Rice	6
50	Reger, John	LB	230	6:01	Pitt	6
55	James, Dan	C	275	6:04	Ohio State	1
57	Beatty, Ed	C	225	6:03	Mississippi	6
62	Sandusky, Mike	G	230	6:01	Maryland	4
64	Kapele, John	T	240	6:00	Brigham Young	1
65	Nisby, John	G	230	6:01	C. O. P.	4
66	Campbell, Dick	LB	225	6:01	Marquette	3
68	Stehouwer, Ron	G	240	6:02	Colorado State	1
70	Stautner, Ernie	E	230	6:02	Boston College	11
71	Lewis, Joe	T	260	6:02	Compton	3
72	Beams, Byron	T	245	6:06	Notre Dame	2
73	Renfro, Will	T	220	6:05	Memphis State	4
74	Varrichione, Frank	T	230	6:02	Notre Dame	6
75	Krupa, Joe	T	225	6:02	Purdue	5
77	Smith, Billy Ray	E	230	6:03	Arkansas	4
82	Tarasovic, George	E	245	6:04	L. S. U.	8
84	Dial, Buddy	E	195	6:01	Rice	2
86	Orr, Jimmy	E	200	6:00	Georgia	3
88	Brewster, Darrel	E	210	6:04	Purdue	9
89	Green, Bobby Joe	HB	175	5:11	Florida	1

ENCE RAMP NEAREST YOUR SEAT

# Reserve

"Standard of Excellence"

ne million dollars!





*Now...as in the Good Old Days...*

**PARK & TILFORD IS YOUR ASSURANCE OF QUALITY!**



**BROOKLYN BRIDGE... 1873** View of Manhattan side during construction of largest suspension bridge in the world at the time. Completed 10 years later, the bridge is still very much in use today.

**PARK & TILFORD... 1840** When picture was taken, Park & Tilford was 33 years old, already famous for fine whiskeys. Today's Park & Tilford is the finest in history... *a century of quality in every bottle.*

# PARK & TILFORD

*Fine Whiskeys Since 1840*

RESERVE, the finest-tasting whiskey of its type

PRIVATE STOCK, America's rich, rare luxury whiskey



PARK & TILFORD, N. Y. • RESERVE, 70% GRAIN NEUTRAL SPIRITS • PRIVATE STOCK, BLEND OF STRAIGHT WHISKEYS • ALL 96 PROOF.





**HAND-OFF . . .** from Bobby Layne to Tom Tracy, men to watch.

ANY consideration of the Pittsburgh Steelers has to begin with the fact that they have on their side the one and only Bobby Layne.

The Blond Bomber from Texas probably is the most dominant individual player in pro football. The No. 1 draft choice of the Chicago Bears in 1948, he has left an indelible stamp on the National Football League as a Bear, as a New York Bulldog in 1949, as a Detroit Lion in 1950-57 and as a Steeler since 1958.

Going into this season, Layne had thrown 163 touchdown passes (a total exceeded only by Sammy Baugh's 187); had scored 22 touchdowns and had booted 29 field goals.

The cold statistics tell only part of the story. There are better mechanics at passing, running and kicking than Bobby. But no quar-

## Looking Over the Steelers

terback takes more thorough charge on the field, runs a game better or drives his team harder and gets more out of it.

Coach Buddy Parker, who has led the Layne cheering section ever since they formed a title-winning combination at Detroit, has done a great job of organizing a worthy supporting cast in Pittsburgh for his ace.

As Steeler backfield cohorts, Layne has Tom (The Bomb) Tracy, a bulldozing carrier who also catches and throws passes, and John Henry Johnson, a mercurial power runner acquired from the Lions since last season.

Pittsburgh's pass-receivers rate with the best. The top three are Buddy Dial, the 1958 Rice All-America end who has been recast as a flanking back; Jimmy Orr, the 1958 National League rookie-of-the-year, and Preston Carpenter and Darrell Brewster, formerly of the Browns.

From tackle to tackle, the Steelers' offensive line is a blue-ribbon unit, too, with an outstanding performer in Frank Varrichione at right tackle and a promising newcomer in Dan James at left tackle.

The retirement of Jack Butler, Dale Dodrill and Dick Alban left gaps in Pittsburgh's defensive pla-



**THE BOSS . . .** Buddy Parker, now in third year at Pittsburgh.

toon. But a hard core of stalwarts remains. Its leaders include Ernie Stautner, back at tackle where he belongs; George Tarasovic, at end; John Reger at linebacker and Tom Barnett, at halfback.

As companions in an uncompromisingly rugged rushline, Stautner and Tarasovic have Joe Krupa and Billy Ray Smith. Rudy Hayes, Dick Henry and Marion Campbell assist Reger with the linebacking. Dickie Moegle, Dean Derby, Lowe Wren, Joe Scudero and Rex Johnston round out the deep secondary.

To complete the picture, the veteran Bert Rechichar, who can boot the ball as far as anyone, was acquired from the Colts to relieve Layne of the place-kicking. Pittsburgh has a tradition of hard-nosed, rock-and-sock football. The 1960 Steelers follow this party line.



**GR-R-R-R . . .** Steeler rushliners Billy Ray Smith, Ernie Stautner, Joe Krupa and George Tarasovic look mean, play mean.



# NOW...A FILTER MADE OF TOBACCO ITSELF!

Kentucky Kings  
with the  
all-tobacco filter  
for that  
all-tobacco taste

All  
Tobacco  
Filter

SMOOTHS THE SMOKE  
NATURALLY...  
yet never dulls  
the taste as  
artificial filters do



KING-SIZE  
POPULAR PRICE

A NEW KIND OF CIGARETTE! NEW KENTUCKY KINGS WITH THE ALL-TOBACCO FILTER MADE OF GOLDEN TOBACCO CUT FILTER-FINE

Now comes the best news smokers ever had. New Kentucky Kings has discovered the way to make a filter of tobacco itself. Yes, Kentucky Kings is a new kind of cigarette—the only cigarette with the all-tobacco filter for that all-tobacco taste. Filters the smoke naturally for that

all-tobacco taste—never dulls the flavor as artificial filters do. Improves smoking with smoothness you miss in every other all-tobacco cigarette. Enjoy new Kentucky Kings with the all-tobacco filter... the great idea... the great taste in smoking today.

TAKE IT  
FROM A  
TOBACCO  
EXPERT



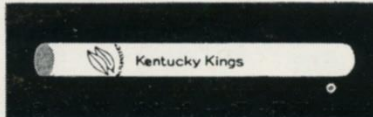
See how the all-tobacco filter is created from golden tobacco cut filter-fine.



Filter-fine tobacco is made into the all-tobacco filter by patented machines.



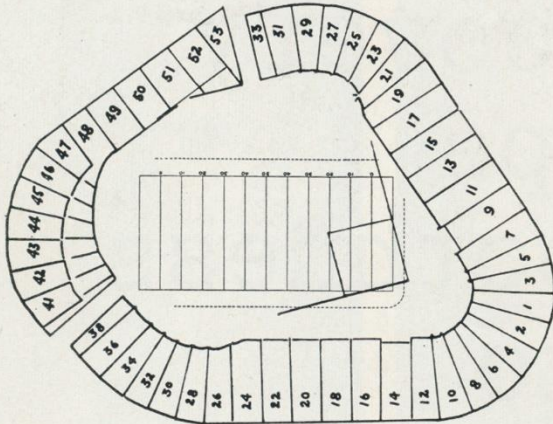
Kentucky Kings combines the all-tobacco filter with a luxury blend of tobaccos.



Only new Kentucky Kings with the all-tobacco filter smooths the smoke naturally, yet never dulls the taste as artificial filters do. Kentucky Kings—the all-tobacco filter for that all-tobacco taste.



# Yankee Stadium Services & Facilities



**LOST AND FOUND**—Direct inquiries and reports to James K. Thomson, the Stadium Manager. Any attendant will direct you to his office.

**REST ROOMS**—**Men:** Gate 2, Press Gate, Stadium Club (lower, upper), Gate 6; Lower Sections 34, 8, 6, 15, 21, 27; Mezzanine Sections 27, 15, 5, 18, 28; Upper Sections 34, 20, 6, 15, 21; Bleacher Sections 43, 47, 52. **Women:** Gate 2, Gate 4, Stadium Club (lower, upper), Gate 6; Lower Sections 28, 20, 5, 15, 27; Mezzanine Sections 21, 15, 6, 18, 34; Upper Sections 28, 20, 5, 15, 29; Bleacher Sections 47, 52.

**PUBLIC TELEPHONES**—Gate 2, Gate 4, Press Gate, Stadium Club (lower, upper), Gate 6, Lower Sections 24, 14, 12, 11, 17, 27; Mezzanine Sections 27, 17, 7, 8, 22; South side 157th St., Ruppert Pl. to Cromwell Ave. Upper Sections 34, 20, 12, 8, 9, 19, 27; Bleacher Sections 41, 49, 51.

## PARKING AREAS YANKEE LOTS

South side 157th St., Ruppert Pl. to Cromwell Ave.  
Between Cromwell and River Aves., on 153rd St.  
163rd to 164th Sts., between River and Gerard Aves.  
151st St. and River Ave., opposite Bronx County jail.

## PRIVATELY-OWNED LOTS

West side Ruppert Pl., between 157th and 158th Sts.  
West side River Ave., between 151st and 153rd Sts.  
West side River Ave. and 157th St.  
East side River Ave., North of 153rd St.  
East side River Ave., North of 151st St.  
East side River Ave., 164th to 165th Sts.  
East side River Ave., South of 162nd St.  
Farmer's Square—Cromwell Ave. Roadway, and  
West of 151st St. Viaduct, opposite Bronx County Jail.  
East 168th St. and River Ave.

## GARAGES

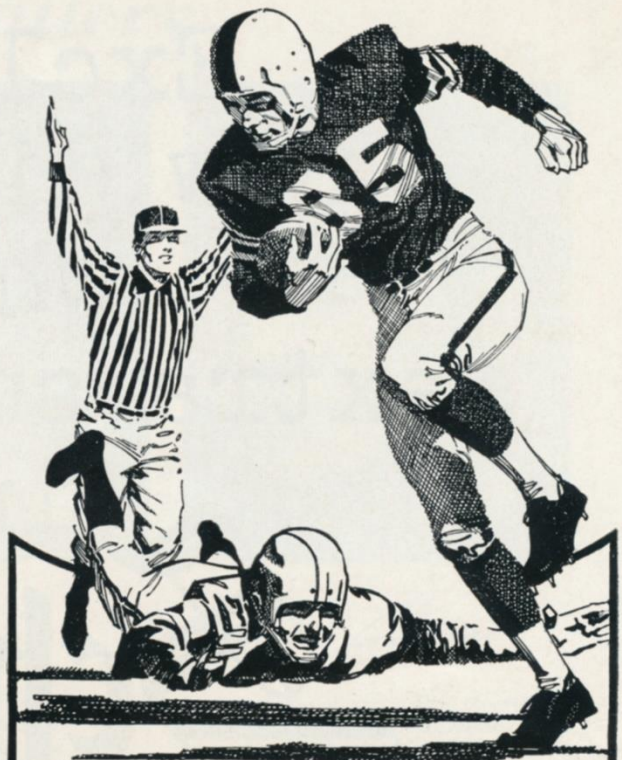
Cromwell Ave. and 157th St.  
East side of River Ave., South side of 158th St.  
East side of River Ave., North side of 157th St.  
East side of River Ave., South side of 157th St.  
North side of 158th St., between River and Gerard Aves.  
Also, the Polo Grounds lot again will be in service for all Giant games at the Stadium.

## SOUVENIR PRICE LIST

Rooter Badge (All Teams) .....	.25	Plastic Cushion .....	1.00
Picture Set (36 Players).....	.50	Stadium Cap (ear laps).....	2.00
Team Pennants (large) .....	.75	Knitted Hat .....	1.50
Pen and Pencil Set .....	.75	Football (small) .....	1.50
Player Doll (small) .....	.75	Football (large) .....	3.00
Giants Player Trophy .....	1.00		

Souvenir Stands located at Gates 2, 4, 6; Lower Sections 7, 14; Mezzanine Section 10; Bleacher Sections 43, 50.

These items also are available by mail from Harry M. Stevens, Inc., Souvenir Department, Yankee Stadium, Bronx 51, N. Y.



All 13 National League  
Professional football teams  
chose **UNITED AIR LINES**  
for team travel this year.



The big reason more athletic  
organizations chose **UNITED**  
is the *extra care* **UNITED**  
takes with every detail of  
their trips...from the  
planning to the personal,  
attentive, dependable service.

For reservations on United Jet  
Mainliners call your Travel Agent or  
United Air Lines.



THE EXTRA CARE LINE



Exclusive  
new discovery  
whips  
extra smoothness  
into

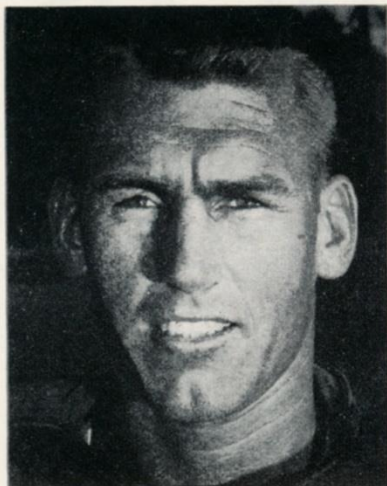
**Schenley**  
WHISKY



**AFTER THE GAME...TASTE THE DIFFERENCE**  
Schenley Distillers Co., N.Y.C. • Blended Whisky, 86 Proof, 65% Grain Neutral Spirits.



# Giant Gallery



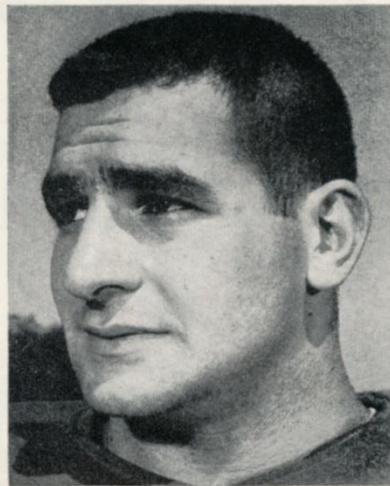
*Bill Stits*

An eight-year pro who previously played with the Lions, '49ers and Redskins, **Bill Stits (48)** signed with the Giants as a free agent in 1959. This rangy speedster from U. C. L. A. is a versatile player who fits in well as a spare defensive back, a runback man and even as an offensive end. His home is in Manhattan Beach, Calif.



*Lee Riley*

**Lee Riley (21)**, a graduate of the University of Detroit, joined the Giants this season after having put in four years with the Philadelphia Eagles. Swift and smart, he's the Giants' No. 1 replacement in the deep secondary. There's no better open-field tackler on the squad and he has a nose for the ball on pass plays.



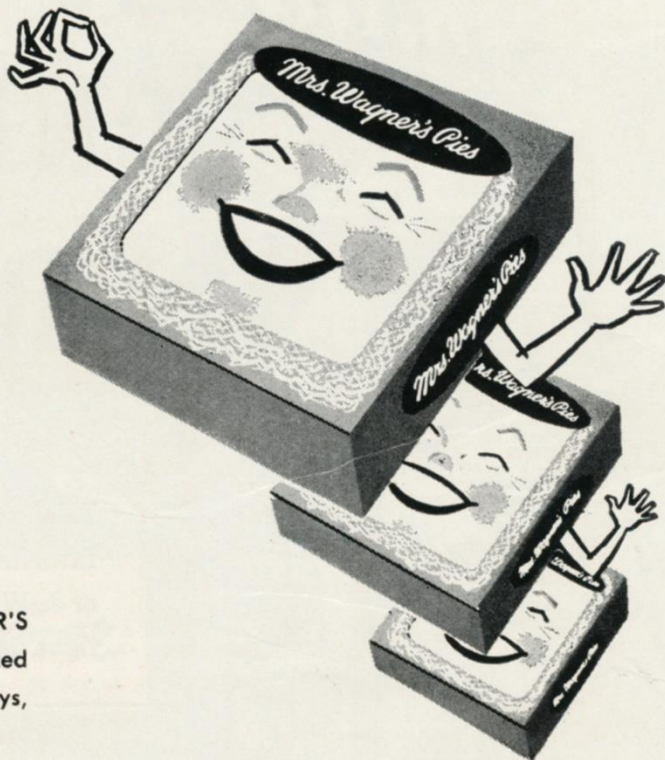
*Lou Cordileone*

On the basis of exhaustive reports, the Giants made **Lou Cordileone (74)** their No. 1 choice in the 1960 draft. Their agents tabbed the 245-pound Clemson tackle as the best blocking lineman they saw last year. The appraisal was sound, Big Lou has a rosy future in pro football. From Jersey City, he always has wanted to be a Giant.

## Enjoy em at the Game and at Home

Here at the Yankee Stadium, reach for MRS. WAGNER'S delicious individual pies. At home, enjoy the fresh-baked goodness of MRS. WAGNER'S family-size pies. Both ways, you're in for real enjoyment.

## Why bake when you can buy



*Mrs. Wagner's Pies*



# League Leaders!

The Top Bourbon... Like the Top  
Football Team... has Quality!

## J.W. DANT WORLD'S LARGEST SELLING BONDED BOURBON



Take your choice of the two Kentucky favorites—Dant 100 Proof Bottled in Bond or J. W. Dant 86 Proof... its mild, light, lower-priced partner.

### NATIONAL LEAGUE LEADERS

Rushing	Taylor, Green Bay, 128-540 yds.
Passing	Plum, Cleveland, 68 of 99-1075 yds.
Receiving	Berry, Baltimore, 46-862 yds.
Scoring	Hornung, Green Bay, 83 pts.
Punting	Van Brocklin, Philadelphia, 45.7 vd. Avg.
Punt Returns	Butler, Dallas, 8-112 yds.
Kick-Off Returns	Sample, Baltimore, 11-366 yds.
Interceptions	Norton, St. Louis, 5-63 yds.



FOUNDER MEMBER



# 1960 Giant Statistics

## SIX-GAME TEAM RECORD

GIANTS	OPPONENTS
40 First downs, rushing .....	46
57 First downs, passing .....	41
11 First downs, penalty .....	8
108 Total first downs .....	95
1831 Total yards gained .....	1453
746 Yards gained, rushing .....	721
1085 Yards gained, passing .....	732
202 Number of rushing attempts .....	219
168 Number of passing attempts .....	142
78 Passes completed .....	70
12 Passes intercepted by .....	8
37.0 Punting average .....	42.7
12 Punts returned .....	7
5.0 Punt return average .....	9.3
17 Kick-offs returned .....	20
21.0 Kick-off return average .....	18.3
27 Penalties .....	30
248 Yards penalized .....	320
24 Fumbles .....	15
9 Opponents fumbles recovered .....	15

## INDIVIDUAL RECORDS

### PASSING

	Att.	Comp.	Int.	Yds.	L.G.	TDs.	Pct.
Shaw .....	93	48	7	739	58	7	.516
Conerly .....	62	26	3	387	44	2	.419
Gifford .....	5	2	1	11	7	0	.400
Grosscup .....	6	2	0	17	9	0	.333
Morrison .....	1	0	1	0	0	0	.000
Summerall .....	1	0	0	0	0	0	.000

## SCORING

	TD-R	TD-P	TDs	PAT	FG	SFY	Pts.
Rote .....	0	5	5	0	0	0	30
Triplett .....	4	1	5	0	0	0	30
Summerall .....	0	0	0	16-16	3-10	0	25
Gifford .....	3	1	4	0	0	0	24
Morrison .....	0	2	2	0	0	0	12
Crow .....	1	0	1	0	0	0	6
Grier .....	0	0	0	0	0	1	2

## RUSHING

	Att.	Yds.	L.G.	Avg.
Triplett .....	53	298	33	5.6
Gifford .....	63	193	15	3.0
Morrison .....	51	181	11	3.6
King .....	11	49	11	4.5
Sutton .....	3	14	8	4.5
Shaw .....	9	10	11	0.9
Grosscup .....	2	7	5	3.5
Webster .....	3	6	4	2.0
Conerly .....	7	-12	6	—

## RECEIVING

	Att.	Yds.	TDs.	L.G.
Rote .....	26	401	5	32
Mor'son .....	18	256	2	51
Sch'ker .....	17	225	0	24
Gifford .....	11	164	1	44
Simms .....	1	58	0	58
Triplett .....	2	32	1	24
Sutton .....	1	14	0	14
King .....	1	4	0	4

## INTERCEPTIONS

	No.	Yds.	L.G.
Patton .....	3	75	34
Lynch .....	1	32	32
Nolan .....	1	20	20
Huff .....	1	16	16
Crow .....	1	3	3
Livingston .....	1	0	0

## PUNT RETURNS

	No.	Yds.	L.G.
Stits .....	6	39	16
Riley .....	4	20	14
Crow .....	2	1	1

## KICK-OFF RETURNS

	No.	Yds.	L.G.
Stits .....	9	210	39
Sutton .....	6	124	26
Riley .....	1	24	24
Brown .....	1	0	0

## PUNTING

	No.	Avg.	Lgst.
Conerly .....	18	36.9	59
Chandler .....	7	37.0	50

## EVERYBODY GETS A KICK OUT OF THESE WONDERFUL GIFTS— WATCHBANDS

By *Forstner*®

EXCLUSIVE CREATIONS THAT LEND  
NEW BEAUTY TO EVERY WATCH!

Most admired because these ultra-thin, luxurious looking watch bracelets are so distinctively designed, so finely made. Smooth, cool, comfortable, completely flexible, instantly adjustable to wrist size. See a variety of KOMFIT and AMERICANA styles at better jewelers everywhere.

*Forstner*  
JEWELRY'S NAME FOR QUALITY

FORSTNER, INC., Irvington, N. J.



the unique  
**KOMFIT**® "Grand"

12Kt. Gold Filled with  
Stainless Steel lining  
\$15.40 (plus Fed. Tax).  
All Stainless Steel \$8.95  
(no tax)



the exquisite  
**AMERICANA**

New gleaming 12Kt. Gold  
Filled mesh style \$8.00 (plus  
Fed. Tax).  
Square Snake Chain styles  
from \$7.50.

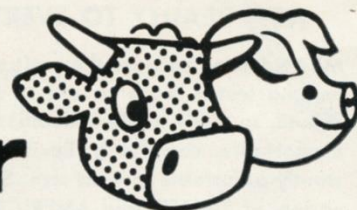




# "THESE FRANKFURTS ARE HICKORY SMOKED!"

Enjoy 'em at home, the circus, the football field, *everywhere!*  
Take your choice—regular or all-beef franks—both are *all meat!* Both deliciously hickory-smoked! Available in jars and cellophane, too. By famous...

## Stahl-Meyer



FAMOUS FERRIS HICKORY SMOKED CANNED HAM AND FERRIS BACON ARE TWO MORE FINE PRODUCTS MANUFACTURED AND KITCHEN TESTED BY STAHL-MEYER INC.





## Smart new ways to toast your favorite pro team!

Host your football guests wearing a magnificently styled club jacket tailored by Hart Schaffner & Marx from world's finest Fortuna flannel by Forstmann. Distinctive NFL lining and buttons. Limited supply means only season ticket holders are eligible to buy this jacket, Men's \$69.50, Women's \$65. Pure silk NFL team ties are by Damen, \$2.50.

Many kinds of sparkling Weico glassware—all in team colors of your choice—can add to party fun. Eleven piece ice bucket caddy set, seen on table, \$10. Bent glass ash tray set, \$3.50. Eight piece martini set, host holds pitcher, \$6. Eight or 13 piece sets of glasses with one or all 13 team

emblems, in 5 different sizes, \$3.50 to \$9.50.

Team dolls with nodding heads, seen on back bar, are 5" high, \$1 each, by L.A. Rams Mdse. Div.

RCA Victor has captured half time excitement in a colorful album starring the NFL Marching Band playing all team fight songs, \$3.98.

Couple in doorway wear corded embossed vinyl "Stadium" coats, sleeves and hood lined with NFL rayon print. Leather buttons, flap covered patch pocket, \$8.95, by Dolphin Rainwear. This price includes carrying case with cushion.

**OFFICIAL NFL TEAM MERCHANDISE IS FEATURED IN YOUR CITY AT:**

**Abraham & Straus, 422 Fulton St., Brooklyn**

**Arnold Constable Corp. 435 Fifth Avenue**

And other leading department stores, men's and boys' shops and sporting goods stores.



# RUPPERT PEOPLE

*have a thirst for living!*



A *thirst* for living means a *taste* for Ruppert! Ruppert is the light lively beer for people who live livelier lives. Four generations of the Ruppert family have seen to it *personally* that Ruppert has the finest flavor your money can buy. So live a little! Open up a Ruppert and swallow deep.

*Have a Ruppert! Brewed since 1867 by four generations of the Ruppert family!*



*Bright  
new  
label...  
same  
fine  
Ruppert!*

© 1960, JACOB RUPPERT, NEW YORK CITY



## Series Review:

### GIANTS vs. STEELERS

IN recent years, the Steelers have rivalled the Browns as the Giants' most troublesome Eastern Conference foe. Although the Giants hold on overall edge of 28-19-2 in a series that began in 1933, the rivalry has been a virtual stand-off since the end of World War II in 1945.

Of thirty meetings between the teams during the post-war years, the Giants have won 15, the Steelers 13 and there has been one tie—a 13-13 deadlock in 1951.

The Steelers scored two-game sweeps in 1947, 1949, 1953 and 1955 and, in the single game of 1952, handed the Giants a 63-7 beating that remains the worst ever to have been suffered by the New Yorkers.

The Giants accomplished sweeps in 1946, 1954 and 1956. With a 19-17 victory in hand in the cliff-hanger at Pittsburgh a few weeks ago, they have a chance to put across another slam.

However, as the record reveals, Pittsburgh doesn't beat easily.

The complete series record:

1933—Giants 23, Steelers 2	1948—Giants 34, Steelers 27
Giants 27, Steelers 3	Steelers 38, Giants 28
1934—Giants 14, Steelers 12	1949—Steelers 28, Giants 7
Giants 17, Steelers 7	Steelers 21, Giants 17
1935—Giants 42, Steelers 7	1950—Giants 18, Steelers 7
Giants 13, Steelers 0	Steelers 17, Giants 6
1936—Steelers 10, Giants 7	1951—Giants 13, Steelers 13
1937—Giants 10, Steelers 7	Giants 14, Steelers 0
Giants 17, Steelers 0	1952—Steelers 63, Giants 7
1938—Giants 27, Steelers 14	1953—Steelers 24, Giants 14
Steelers 13, Giants 10	Steelers 14, Giants 10
1939—Giants 14, Steelers 7	1954—Giants 30, Steelers 6
Giants 23, Steelers 7	Giants 24, Steelers 3
1940—Giants 10, Steelers 10	1955—Steelers 30, Giants 23
Giants 12, Steelers 0	Steelers 19, Giants 17
1941—Giants 37, Steelers 10	1956—Giants 38, Steelers 10
Giants 28, Steelers 7	Giants 17, Steelers 14
1942—Steelers 13, Giants 10	1957—Giants 35, Steelers 0
Steelers 17, Giants 9	Steelers 21, Giants 10
1945—Giants 34, Steelers 6	1958—Giants 17, Steelers 6
Steelers 21, Giants 7	Steelers 31, Giants 10
1946—Giants 17, Steelers 14	1959—Giants 21, Steelers 16
Giants 7, Steelers 0	Steelers 14, Giants 9
1947—Steelers 38, Giants 21	1960—Giants 19, Steelers 17
Steelers 24, Giants 7	

#### GIANTS vs. ALL OPPONENTS

Opponent	W.	L.	T.	Pts.	Opp. Pts.
Baltimore Colts .....	2	3	0	88	102
Chicago Bears .....	14	20	2	451	554
Cleveland Browns .....	11	11	1	355	382
Detroit Lions .....	5	8	1	177	285
Green Bay Packers .....	15	14	2	425	396
Los Angeles Rams .....	3	7	0	208	224
Philadelphia Eagles .....	33	18	1	978	790
Pittsburgh Steelers .....	28	19	2	872	675
St. Louis Cardinals .....	29	9	0	890	594
San Francisco 49ers .....	3	1	0	99	81
Washington Redskins .....	30	17	2	986	775

## SEASON AFTER SEASON . . .



"Ahh . . .  
So Pure!"

She's New York's  
Best Girl!

**White Rock**  
for sparkling fine beverages

The White Rock Girl stays so popular because the brand she represents satisfies so completely! Thanks to *Superior carbonation*, a White Rock drink keeps sparkling from the first pour to the last sip. So for a lighter-livelier drink every time, don't just mix it . . . *White Rock it!*







Your Dates at the Garden...

Tonite 7 PM **HOCKEY**  
**RANGERS vs MONTREAL**

---

This Tuesday **NBA Doubleheader**  
**BOSTON CELTICS vs DETROIT PISTONS**  
**KNICKS vs LOS ANGELES LAKERS**

---

This Wednesday **HOCKEY**  
**RANGERS vs BOSTON**

---

This Friday **BASKETBALL**  
**KNICKS vs PHILA. WARRIORS**  
with WILT "THE STILT" CHAMBERLAIN

---

Next Sunday **HOCKEY**  
**RANGERS vs DETROIT**

---



# NATIONAL LEAGUE OFFICIALS' SIGNALS



Offside



Crawling, Pushing,  
Helping Runner



Illegal Motion



Illegal Pass



Unsportsmanlike  
Conduct



Pass Interference



Holding, Illegal  
Use of Hands



Personal Foul  
(indication of  
offense follows)



Delay of Game,  
Excess Time-Out



Touchdown, Field  
Goal, Extra Point



Safety



Loss of Down



Penalty Declined,  
Incomplete Pass,  
Missed Goal



First Down



Dead Ball



No Time-Out or  
Time In with Whistle



Time-Out

Enjoy  
**MELROSE**  
Whiskey Born Great!



## "A Toast to Greatness"

There's royal pleasure for you in Melrose . . . an incredibly smooth blend selected from our treasured reserves. Rich and mellow—yet light and appealing. Tonight, make yours MELROSE—the toast to greatness.



SUPERLATIVE BLENDED WHISKEY, 86 PROOF, 65% GRAIN NEUTRAL SPIRITS, MELROSE DISTILLERS CO., NEW YORK, N. Y.



# NFL Pairings and Results

Home Team		Visiting Team		Home Team		Visiting Team	
NEW YORK		PITTSBURGH		CHICAGO		BALTIMORE	
Won 4, Lost 1, Tied 1		Won 2, Lost 4, Tied 1		Won 3, Lost 2, Tied 1		Won 5, Lost 2	
21—@ San Francisco	19	35—@ Dallas	28	17—@ Green Bay	14	20—Washington	0
35—@ St. Louis	14	20—@ Cleveland	28	7—@ Baltimore	42	42—Chicago	7
19—@ Pittsburgh	17	17—New York	19	34—Los Angeles	27	21—@ Green Bay	35
24—Washington	24	27—St. Louis	14	27—San Francisco	10	31—Los Angeles	17
13—St. Louis	20	27—@ Washington	27	24—@ Los Angeles	24	17—@ Detroit	30
17—@ Cleveland	13	13—Green Bay	19	7—@ San Francisco	25	45—@ Dallas	7
—Pittsburgh		7—@ Philadelphia	34	—Baltimore		38—Green Bay	24
—Philadelphia		—@ New York		—Detroit		—@ Chicago	
—@ Philadelphia		—Cleveland		—Dallas		—San Francisco	
—Dallas		—Washington		—Green Bay		—Detroit	
—@ Washington		—Philadelphia		—@ Cleveland		—@ Los Angeles	
—Cleveland		—@ St. Louis		—@ Detroit		—@ San Francisco	
129	107	146	169	116	142	214	120
PHILADELPHIA		WASHINGTON		DETROIT		LOS ANGELES	
Won 5, Lost 1		Won 1, Lost 3, Tied 2		Won 2, Lost 4		Won 2, Lost 4, Tied 1	
24—Cleveland	41	0—@ Baltimore	20	9—@ Green Bay	28	21—St. Louis	43
27—@ Dallas	25	26—Dallas	14	10—San Francisco	14	9—@ San Francisco	13
31—St. Louis	27	24—@ New York	24	10—@ Philadelphia	28	27—@ Chicago	34
28—Detroit	10	27—Pittsburgh	27	30—Baltimore	17	17—@ Baltimore	31
31—@ Cleveland	29	10—Cleveland	31	35—@ Los Angeles	48	24—Chicago	24
34—Pittsburgh	7	7—@ St. Louis	44	24—@ San Francisco	0	48—Detroit	35
—Washington		—@ Philadelphia		—Los Angeles		38—@ Dallas	13
—@ New York		—St. Louis		—@ Chicago		—@ Detroit	
—New York		—@ Pittsburgh		—Green Bay		—Green Bay @ Mil.	
—@ St. Louis		—@ Cleveland		—@ Baltimore		—San Francisco	
—@ Pittsburgh		—New York		—Dallas		—Baltimore	
—@ Washington		—Philadelphia		—Chicago		—Green Bay	
175	139	94	160	118	135	184	193
CLEVELAND		ST. LOUIS		GREEN BAY		DALLAS	
Won 4, Lost 2		Won 4, Lost 3		Won 4, Lost 2		Won 0, Lost 7	
41—@ Philadelphia	24	43—@ Los Angeles	21	14—Chicago	17	28—Pittsburgh	35
28—Pittsburgh	20	14—New York	35	28—Detroit	9	25—Philadelphia	27
48—@ Dallas	7	27—@ Philadelphia	31	35—Baltimore	21	14—@ Washington	26
29—Philadelphia	31	14—@ Pittsburgh	27	41—San Fran. @ Mil.	14	7—Cleveland	48
31—@ Washington	10	12—Dallas	10	19—@ Pittsburgh	13	10—@ St. Louis	12
13—New York	17	20—@ New York	13	24—@ Baltimore	38	7—Baltimore	45
—St. Louis		44—Washington	7	—Dallas		13—Los Angeles	38
—@ Pittsburgh		—@ Cleveland		—Los Angeles @ Mil.		—@ Green Bay	
—@ St. Louis		—@ Washington		—@ Detroit		—San Francisco	
—Washington		—Cleveland		—@ Chicago		—@ Chicago	
—Chicago		—Philadelphia		—@ San Francisco		—@ New York	
—@ New York		—Pittsburgh		—@ Los Angeles		—@ Detroit	
190	109	174	144	161	112	104	231

## NATIONAL LEAGUE LEADERS

### RUSHING

1. Taylor, Green Bay	128 for 540 yds.
2. Crow, St. Louis	107 for 524 yds.
3. Brown, Cleveland	95 for 521 yds.

### PASSING

1. Plum, Cleveland	68 of 99 for 1075 yds.
2. Unitas, Baltimore	107 of 201 for 1778 yds.
3. Van Brocklin, Philadelphia	89 of 151 for 1369 yds.

### RECEIVING

1. Berry, Baltimore	46 for 862 yds.
2. Randle, St. Louis	32 for 452 yds.
3. Phillips, Los Angeles	28 for 516 yds.

### SCORING

1. Hornung, Green Bay	83 pts.
2. Walston, Philadelphia	61 pts.
3. Berry, Baltimore	54 pts.
4. Mitchell, Cleveland	54 pts.

## NATIONAL LEAGUE STANDINGS

### EASTERN CONFERENCE

	W.	L.	T.	Pct.	Points For	Points Against
Philadelphia	5	1	0	.833	175	139
NEW YORK	4	1	1	.800	129	107
Cleveland	4	2	0	.667	190	109
St. Louis	4	3	0	.571	174	144
Pittsburgh	2	4	1	.333	146	169
Washington	1	3	2	.250	94	160

### WESTERN CONFERENCE

Baltimore	5	2	0	.714	214	120
Green Bay	4	2	0	.667	161	112
Chicago	3	2	1	.600	116	142
San Francisco	3	4	0	.429	95	139
Detroit	2	4	0	.333	118	135
Los Angeles	2	4	1	.333	184	193
Dallas	0	7	0	.000	104	231

## SAN FRANCISCO—BYE

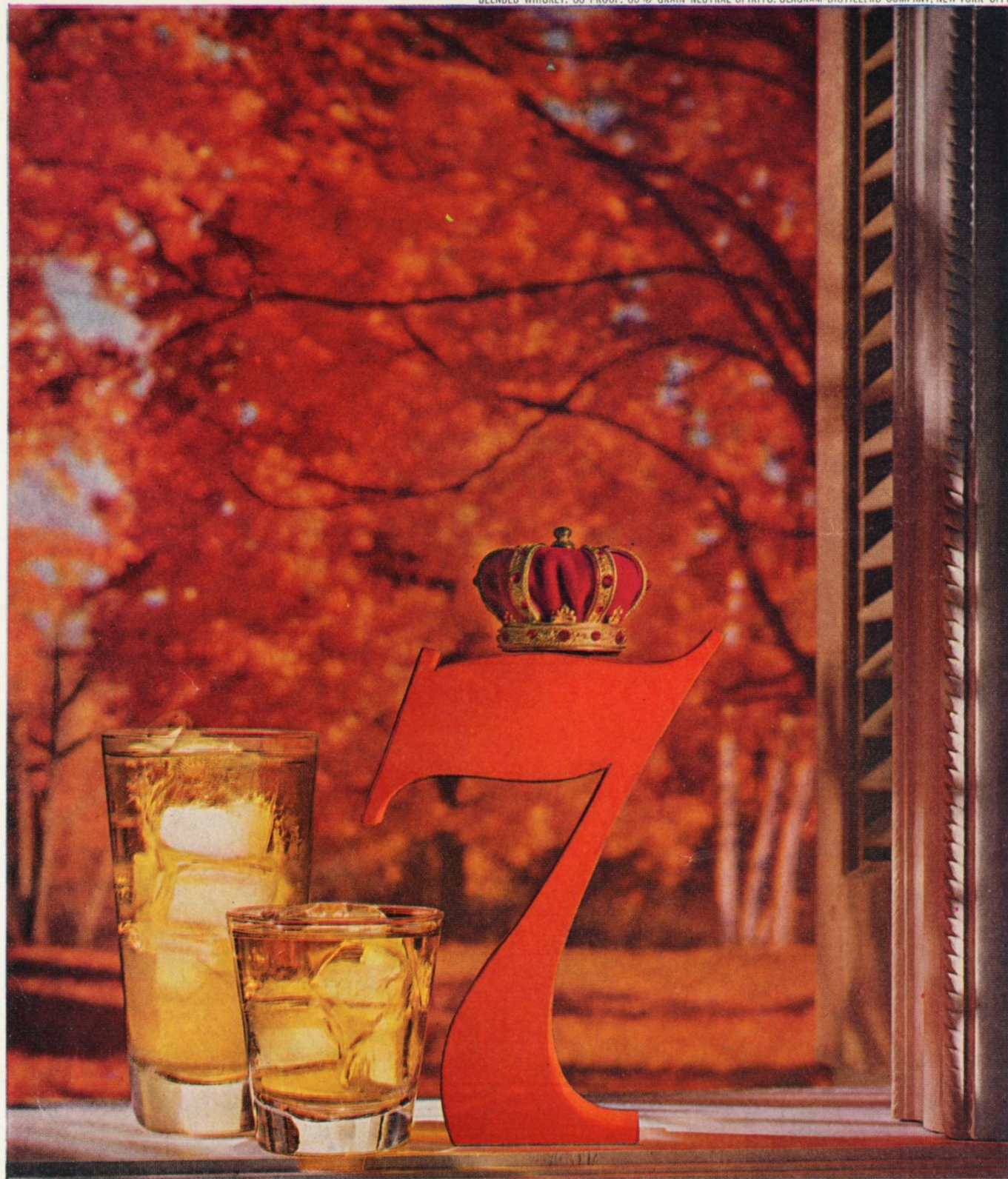
Won 3, Lost 4

19—New York	21
13—Los Angeles	9
14—@ Detroit	10
10—@ Chicago	27
14—Green Bay @ Mil.	41
25—Chicago	24
0—Detroit	24
—@ Dallas	
—@ Baltimore	
—@ Los Angeles	
—Green Bay	
—Baltimore	

95 139

PLEASE USE ENTRANCE RAMP NEAREST YOUR SEAT





# Invitation to Relaxation

The time is twilight, the mood is mellow, the drink is 7 Crown—the happiest combination to end a long day's labors. If you haven't savored these rewards of relaxation, do so tonight, keeping in mind the spirit of the hour is the whiskey that delivers clarity and character of taste surpassing any other. **SAY SEAGRAM'S AND BE SURE**





L&M TAKES YOU TO A DIFFERENT CAMPUS EVERY  
SATURDAY FOR COLLEGE FOOTBALL AT ITS BEST  
...ABC-TV, STARTS SEPT. 17.

**L&M**  
has found  
the secret  
that  
**UNLOCKS  
FLAVOR**  
in a filter  
cigarette



IN L&M, WITH THE PURE WHITE MIRACLE TIP... *FINE TOBACCOS CAN BE BLENDED*  
*NOT TO SUIT A FILTER - BUT TO SUIT YOUR TASTE...* **REACH FOR FLAVOR - REACH FOR L&M**