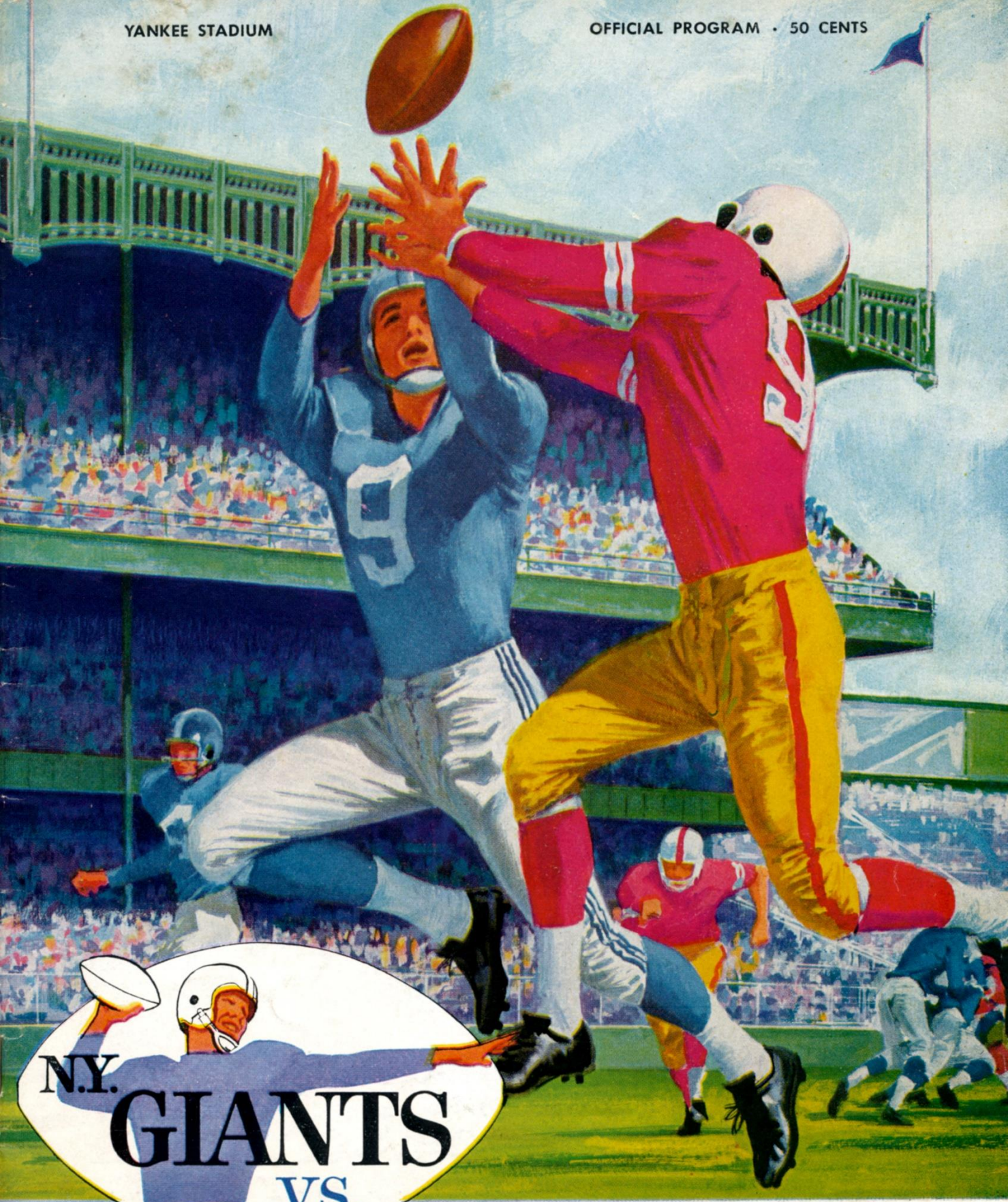


YANKEE STADIUM

OFFICIAL PROGRAM • 50 CENTS



N.Y.  
**GIANTS**  
VS.

DALLAS

**COWBOYS**

DECEMBER 4, 1960





# Marlboro Men

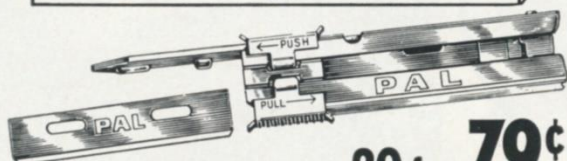
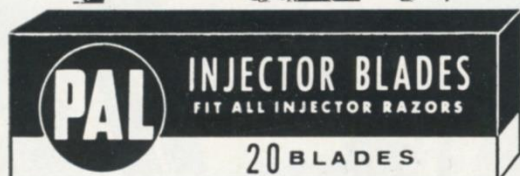
Recognize them in civvies? When they are not playing football, these five New York Giants are members of the Marlboro sales team. Here's the way they look as they travel around the country, making new friends for "the filter cigarette with the unfiltered taste". Take their advice and try Marlboro. You get a lot to like.



# PAL<sup>®</sup>

## INJECTOR BLADES

SPONSOR  
NATIONAL LEAGUE  
**PRO-FOOTBALL**  
EVERY SUNDAY  
**CBS-TV**



20 for **79¢**

Why pay an extra 19¢ for Injector Blades? Pal Injector Blades are made of the finest steel, using the latest production methods, yet they cost 19¢ less! And, Pal Injector Blades fit all injector razors.

*Buy the Best  
for Less!*

# PAL

## INJECTOR BLADES

PRECISION  PRODUCTS

A•S•R PRODUCTS COMPANY • NEW YORK 17, N. Y.

## OFFICIAL PROGRAM

## NEW YORK



## GIANTS

## vs. DALLAS COWBOYS

YANKEE STADIUM • Dec. 4, 1960

Volume 36

Number 5

### CONTENTS

Hang in There, Giants! .....	3
Giant Gallery .....	5 and 13
Yankee 1961 Ticket Plans .....	7
Next, the Browns! .....	9
Giant 1961 Season Subscriptions .....	9
Jottings on the Giants .....	11
Giants' 1960 Statistics .....	15
Giants' Roster and Line-up .....	16
Cowboys' Roster and Line-up .....	17
Looking Over the Cowboys .....	19
Yankee Stadium Services .....	21
Giant Gallery .....	23
Giant Blackboard: Draw Play .....	25
Giants vs. All Opponents .....	29
N. F. L. Officials' Signals .....	31
Today's N. F. L. Pairings—1960 Results .....	32
N. F. L. Standings and Leaders .....	32

### New York Football Giants

JOHN V. MARA .....	President
WELLINGTON T. MARA .....	Vice-President
RAYMOND J. WALSH .....	General Manager
TIMOTHY J. MARA .....	Secretary-Treasurer
JIM LEE HOWELL .....	Head Coach
AL SHERMAN .....	Offensive Coach
HARLAND SVARE .....	Defensive Coach
ANDY ROBUSTELLI .....	Assistant Defensive Coach
JIM PATTON .....	Assistant Defensive Coach
ED KOLMAN .....	Line Coach
KEN KAVANAUGH .....	End Coach
WALT YOWARSKY .....	Assistant Coach and Scout
JOHN JOHNSON, SID MORET and JOHN DZIEGIEL .....	Trainers
DR. FRANCIS SWEENEY .....	Physician
DR. ARTHUR CROKER .....	Dentist
DON SMITH .....	Director of Publicity
DAN RUBIN .....	Team Photographer

Cover Illustration by Carol Johnson

This book published by  
HARRY M. STEVENS, Inc.  
320 Fifth Avenue  
New York 1, N. Y.



# Quality



Products of *The American Tobacco Company*

"Tobacco IS OUR MIDDLE NAME"



# Hang In There, Giants

**A**LTHOUGH it's beginning to look that way, the Giants are not ready yet to admit that they are dead as the kings of the National League's Eastern Division.

Certainly, there was no hint of defeatism in that tremendous battle Jim Lee Howell's boys put up, unfortunately in vain, against the Eagles at Philadelphia last Sunday.

Considering how hard put the Giants were by injuries, with Frank Gifford, Charlie Conerly and Jim Katcavage out of action and other key operatives hurting, their performance at Franklin Field was positively phenomenal.

Our boys never were more devastating on attack and defense than in that first period. Striking for touchdowns, from long range and on a sustained march, the first two times they had possession and adding a field goal, while keeping the Eagles from



**COACH JIM LEE HOWELL**

making so much as one first down, they jumped away to a 17-0 lead.

It appeared to us that the game turned on the two 15-yard penalties suffered by the Giants early in the second period—for having an ineligible receiver downfield and for holding. These nipped promising advances in the bud and the Giants never regained full offensive momentum.

Philadelphia's three rapid-fire interceptions followed and, with the help of a forward fumble for a touchdown, the Eagles tied the score at 17-all in a twinkling.

To their credit, the Giants fought back into the lead on Pat Summerall's field goal as time was running out in the first half. The picture brightened further when they moved in for another field goal with a take-charge drive at the start of the third quarter.

Unhappily, this proved to be their last fling. As the third period ended, the Eagles intercepted again. With the help of that added

defensive opportunism, plus a subsequent fumble recovery, Norm Van Brocklin, Philadelphia's admirable old pro, picked the weary and battered New Yorkers apart in the last quarter.

Coach Howell, his staff and Giant fans should be proud of the team for the determination and desire that was apparent in its effort. But, as had been feared, at much less than 100 per cent strength, you just can't face up to level opposition in this tough football league.

Bright spots amidst the gloom of a key defeat were the lift that Ed Sutton gave to the decimated attack; Joe Morrison's continued fine work; Kyle Rote's magnificent pass-catching; defensive heroics by Sam Huff, Jim Patton, Harland Sware and others.

In fact, hail to all the game and gallant Giants. They certainly have merited loyal support. The race is not over yet. Hang in there, men!



**ED SUTTON**



**KYLE ROTE**

**PLEASE USE ENTRANCE RAMP NEAREST YOUR SEAT**

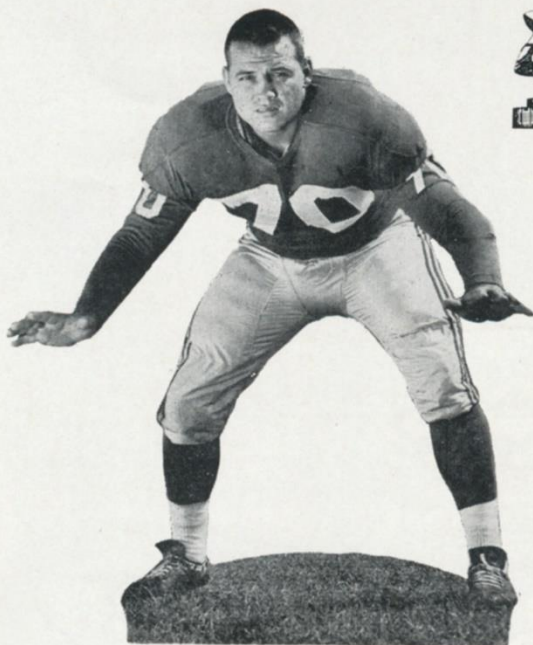


**BE REALLY REFRESHED!**  
**...ENJOY COKE!**





# Giant Gallery



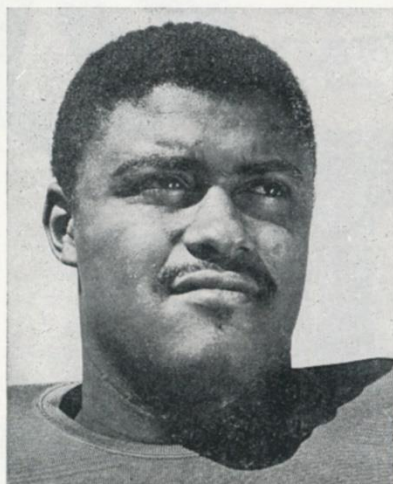
*Sam Huff*

In five years with the Giants, **Sam Huff (70)** has earned acclaim as the N. F. L.'s top middle-line-backer. The deceptively roly-poly 230-pound West Virginia graduate, a college tackle, has uncanny play perception and the speed to range from sideline to sideline. The containing jobs he has done on Jim Brown, Alan Ameche and Rick Casares have been classics.



*Harlan Svare*

The Giants promoted **Harlan Svare (84)** to the coaching staff this season as vice president in charge of defense. The presumption was he'd handle the job from the bench. For a while he did but the lure of combat was too strong. By the time the season started, Swede was back in the right line-backing post, wreaking havoc as of yore.



*Rosy Grier*

Big **Rosy Grier (76)** has been a constant bulwark of the mighty rush-line that has helped the Giants win three divisional titles in the last four years. Amazingly agile for his 280 pounds, he gives fits to enemy runners and passers in his smashing sallies from right tackle. A gifted singer, the 1954 Penn State graduate plans a career in that field.



*Jack Stroud*

Deep-chested **Jack Stroud (66)**, an All-America tackle at Tennessee, has been a key member of the Giants' offensive platoon for eight seasons. A rugged 235-pounder who can run like a deer, he's a picture-book blocker. Out in front of a carrier on wide plays or firing out straight ahead from either guard or tackle, he seldom fails to hit his targets dead center.



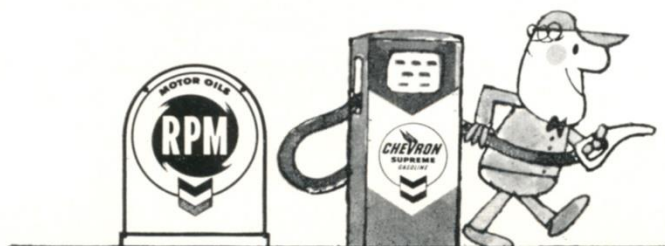
*Jimmy Patton*

The only knock there has ever been against **Jimmy Patton (20)** is excess valor. The peerless Giant safety weighs only 180 pounds but backs off from no man. Fortunately, he's all whalebone and whipcord and shows no signs of wear in his sixth pro campaign. Like Andy Robustelli, the Mighty Mite from Mississippi has been made an assistant coach this season.





You've gone too far this time, Hy Finn. Sure, Chevron Supreme fans are the most loyal anywhere. They're always bragging about the top-form performance Chevron Supreme gives 'em. They use their Chevron Credit Cards all the time, too. But really, Hy, there *are* other things in life. Like RPM Supreme, the motor oil that actually halts engine wear.

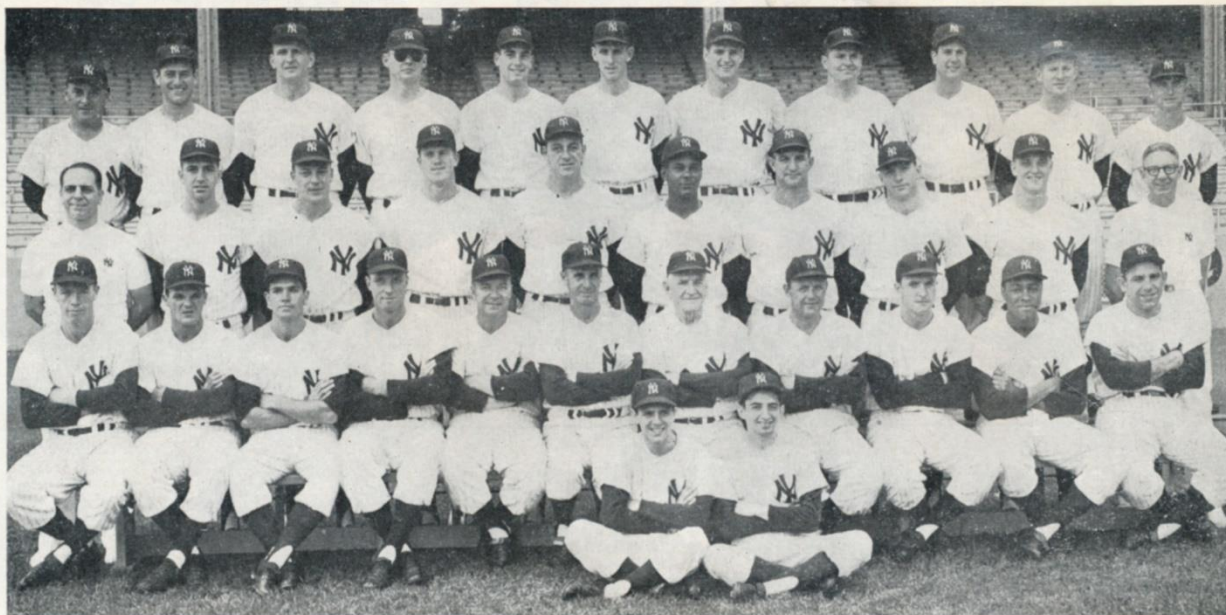


PRODUCTS OF  
CALIFORNIA  
OIL COMPANY



THIS "RPM," "CHEVRON," "CHEVRON SUPREME," CHEVRON DESIGN®





*Rear row, left to right—Luis Arroyo, Duke Maas, Eli Grba, Ryne Duren, Bill Stafford, Jim Coates, Ralph Terry, Bob Turley, Art Ditmar, Whitey Ford, Bobby Shantz. Middle row—Joe Soares, Trainer: Cletis Boyer, Joe DeMaestri, Tony Kubek, Dale Long, Hector Lopez, Bob Cerv, Mickey Mantle, Roger Maris, Gus Mauch, Trainer. Front row—Gil McDougald, Bill Skowron, Bobby Richardson, Jim Hegan, Coach; Eddie Lopat, Coach; Frank Crosetti, Coach; Casey Stengel, Manager; Ralph Houk, Coach; Johnny Blanchard, Elston Howard, Yogi Berra. Seated in front—Frank Prudenti, Fred Bengis, Bat Boys.*

## Soon It Will Be "PLAY BALL" at



If the 1960 "down to the wire" pennant race is any indication, 1961 promises to be another great season; and to assure yourself of the best selection of seats for the BIG games, take advantage of the COMBINATION TICKET PLAN. This plan entitles you to the same choice seats for the crucial dates and the opportunity to obtain World Series tickets if the Yankees successfully defend their American League Championship.

## NEW YORK YANKEES

For further information phone CYpress 3-4300

or

Write — TICKET OFFICE, Yankee Stadium, Bronx 51, N. Y.

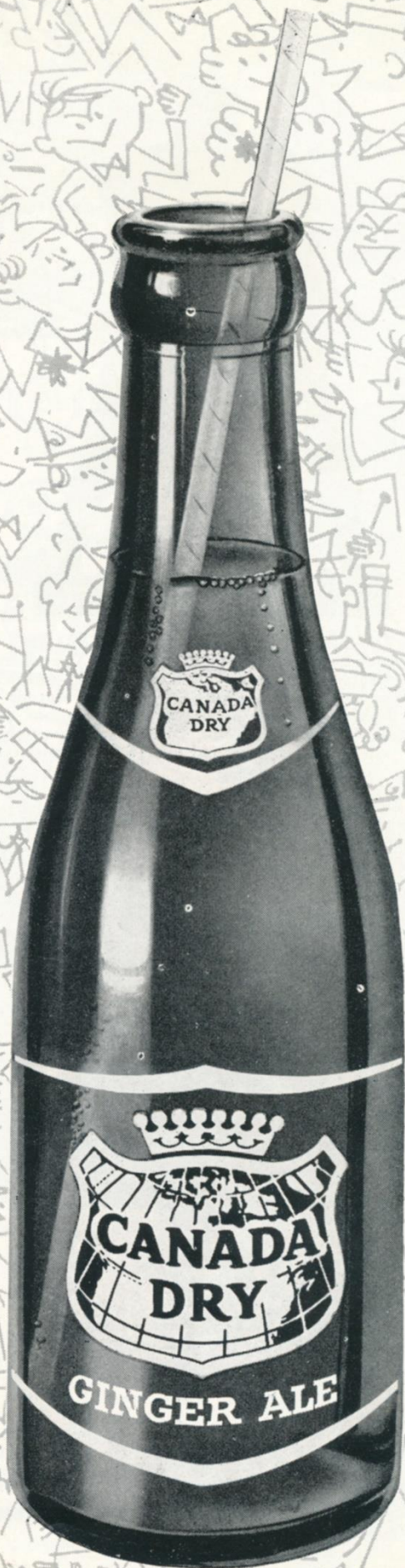
### NOVEL CHRISTMAS GIFT IDEA!

Looking for an unusual Christmas gift for the sports fans on your shopping list? Between halves today or right after the game, stop at the Advance Ticket Windows behind home plate and pick up Yankee Gift Tickets for 1961. Here's a gift that keeps on giving through the next baseball season. You can purchase any combination of box or reserved seats for one game or the Combination Plan for all Sundays, nights, holidays and the opener. Gift Tickets may be exchanged by the recipient for game tickets next season. Your personalized gift comes in an attractive gift folder. Stop at the ticket office here today for your Yankee Gift Tickets.



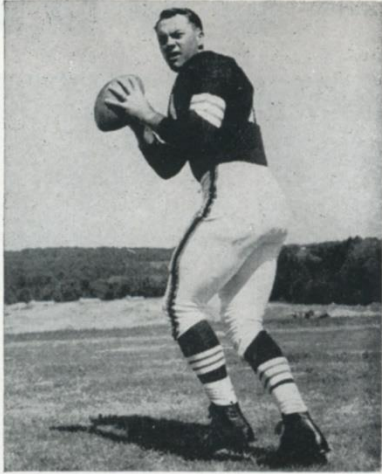
# **Spectating is more sparkling ...with Canada Dry Ginger Ale...**

**So is socializing after the game  
with Canada Dry Ginger Ale  
in your tall drinks.**





# Next, the Browns



MILT PLUM



JIM BROWN



BOB MITCHELL

**C**LEVELAND'S big bad Browns will invade the Stadium two weeks from today to close the Giants' season. For once, it does not look as though this game, which so often has been the tell-tale, will decide the National League race.

But that detracts only slightly from the appeal of a contest that has developed into the pro game-of-the-year so far as New York fans are concerned. There's al-

ways a special atmosphere surrounding a Giant-Brown game.

In twenty-three regular season and play-off games since the Browns came into the league in 1950, New York and Cleveland have battled to a stand-off. Each has won eleven games and there has been one tie. The Giants won the first 1960 meeting of the teams, 17-13. That made it six straight victories for Jim Lee Howell's boys over their arch-

rivals from Cleveland.

Needless to say, Coach Paul Brown will have his team steamed up for this match. Jimmy Brown, Bobby Mitchell, Milt Plum and Company are rough customers in any case. They'll be in a really surly mood for this one. We congratulate the fortunate ticket holders for this sold-out game and urge that prospective bleacherites show up early. It should be a game to remember.

## Football Giants—1961 Season Subscription

*This season more Giant fans than ever before discovered the best way to solve their ticket problems was by season subscription. Many inquiries are now being received at the Giant office regarding subscription for 1961.*

*If you were a season subscriber this year, your same seats automatically are held in your name for 1961. Sometime in the spring you will receive a bill covering the seats which are registered in your name at the Giants office.*

*If you were not a subscriber in 1960 but wish to be one for 1961, we suggest you fill out and mail the blank appearing below.*

*Our 1961 Season Ticket Brochure will be ready in February and will include all necessary information, including the areas in which vacancies now exist.*

*If you prefer a personal visit, our Ticket Windows at 10 Columbus Circle will be open for that purpose as of February 1st.*

New York Football Giants, Inc.  
10 Columbus Circle  
New York 19, New York

Gentlemen:

Please send me your 1961 Season Ticket Brochure when it is ready for mailing:

Name .....

Address .....

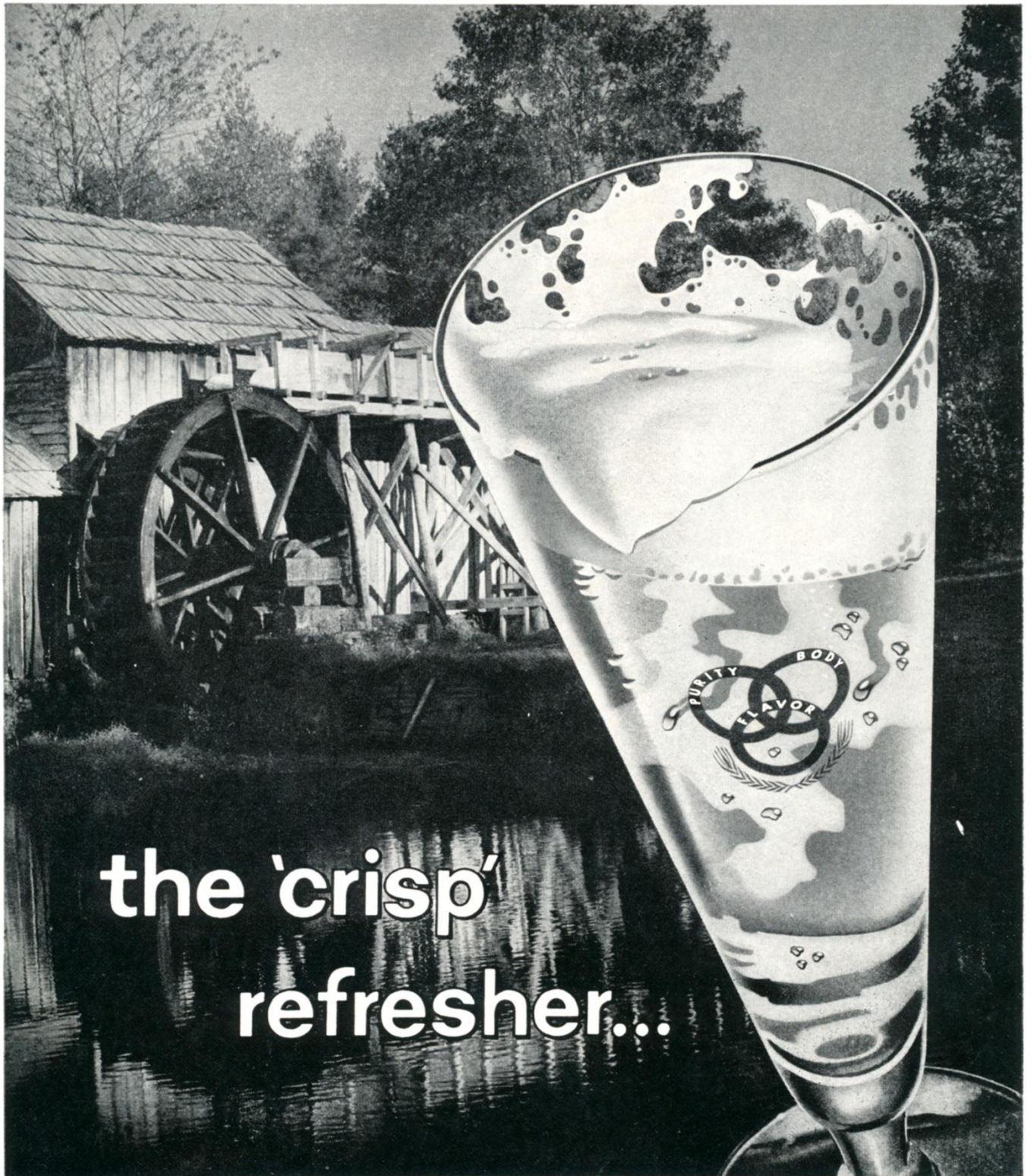
City & Zone..... State.....

**This blank is for use of new applicants. 1960 Season reservations are automatically renewed.**

**SEASON TICKETS—YOUR BEST BUY IN ENTERTAINMENT**



# Ballantine LIGHT LAGER beer



the 'crisp'  
refresher...

© Is a Reg. T. M. of P. Ballantine & Sons, Newark, N. J.

the light beer with true lager flavor!

*No wonder Ballantine is the largest-selling beer in the East.*



# Jottings on the Giants

**A**NDY Robustelli, the Giants' great defensive end, will be honored before today's game by Connecticut friends and neighbors from Stamford and Bridgeport and other Giant fan groups. He also will be the guest of honor tonight at the Section Five Club's annual Football Giant dinner-dance at the Biltmore Hotel. Certainly no one deserves tribute more than Andy, who has been a Giant of towering stature ever since he joined the club in 1956.

The Bergenfield High School band will furnish today's between-the-halves entertainment. This crack New Jersey unit, which is directed by Dr. Bernard T. Baggs, never has failed to make a hit in its several previous appearances at Yankee Stadium for Giant games. Dr. Braggs, who formerly commanded the 318th Infantry, 80th Infantry and 722nd Army Air Force bands, is the director of music and adult education in the Bergenfield public schools. His pupils have been selected to perform in the Macy's Thanksgiving Day parade for eight straight years.

Kyle Rote and Tom Scott received the weekly Coro Jewelry Awards for outstanding offensive and defensive performance in the game with the Eagles

*(Continued on Page 29)*



ANDY ROBUSTELLI



## HOTEL MANHATTAN HEADQUARTERS FOR PROFESSIONAL TEAMS IN NEW YORK CITY

New York's newest... Hotel Manhattan offers 1400 air conditioned guest rooms, each with television and radio. Known as the "Home of Champions," this magnificent skyscraper hotel is ideally located in the heart of Times Square. Meet your friends at the Manhattan Bar or the new Playbill Restaurant for cocktails, luncheon, dinner and supper.

Express Subway Trains Speed You to  
Yankee Stadium from the Private  
Subway Entrance of Hotel Manhattan

FRANK W. KRIDEL

*Executive Vice President and General Manager*



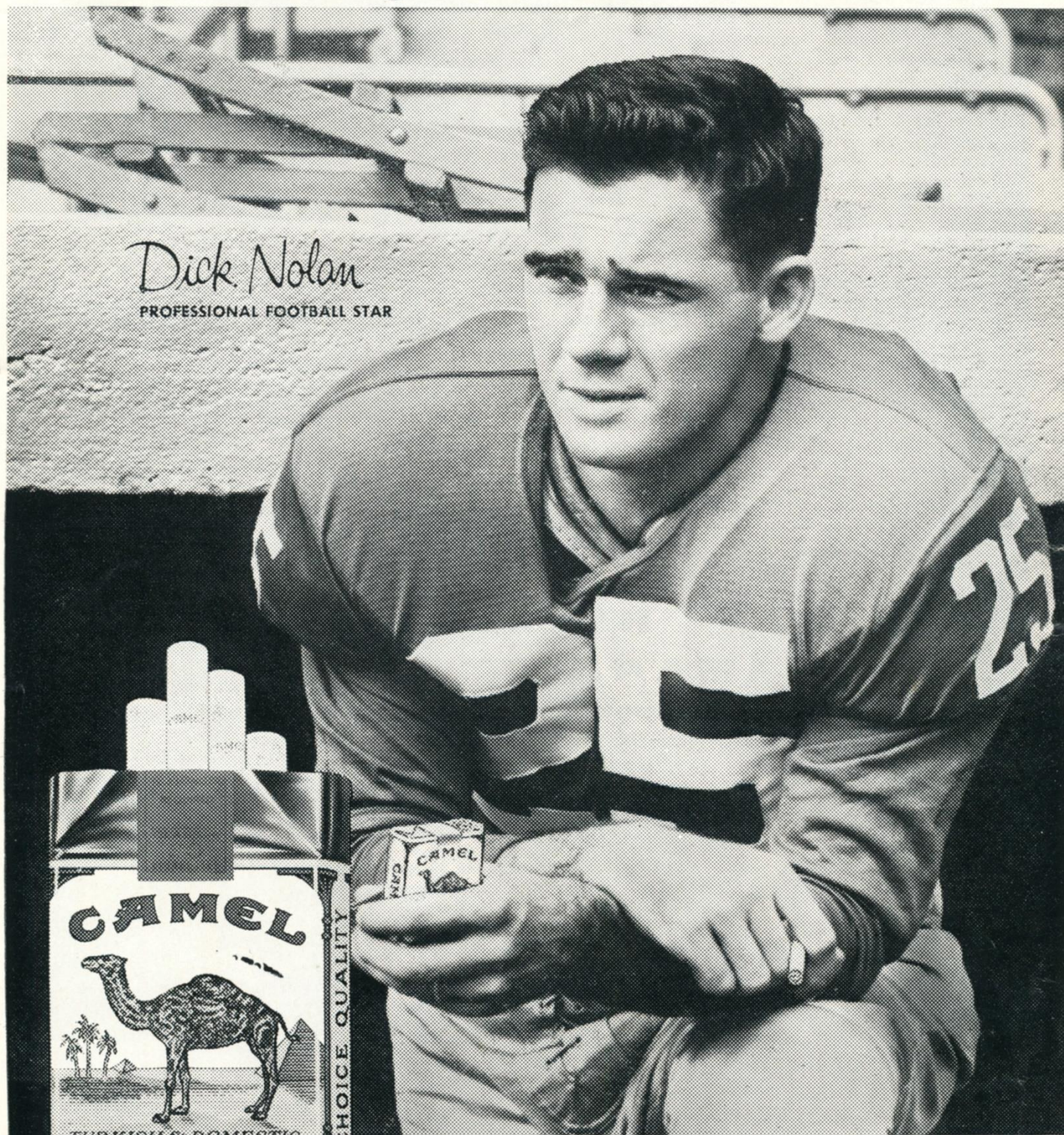
HOTEL  
*Manhattan*  
44TH TO 45TH STREETS  
AT EIGHTH AVENUE • JUDSON 2-0300





# Have a real cigarette—have a **CAMEL**

*Dick Nolan*  
PROFESSIONAL FOOTBALL STAR

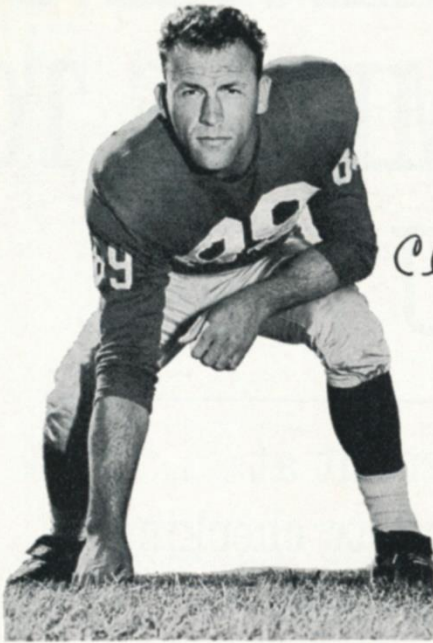


**The best tobacco makes the best smoke!**

R. J. Reynolds Tobacco Co., Winston-Salem, N. C.



# Giant Gallery



*Cliff Livingston*



*Rosie Brown*

Few players have more obvious relish for football than **Cliff Livingston (89)**. The U. C. L. A. graduate, whose brother, Howie, also played with the Giants, first caught the eye with his booming tackles on the kick-off and punting units. A couple of years ago, Cliff was installed as a regular line-backer, where he has added opportunity for action.

**Big Rosie Brown (79)** qualifies as one of pro football's greatest "sleeper" picks of all time. A 27th draft choice in 1953, the Morgan State alumnus was a Giant regular by 1955 and ever since has been one of the N. F. L.'s top offensive tackles. As fast as most halfbacks, he's a devastating blocker, on the line and in the open field.



Take a tip  
from  
**FRANK GIFFORD**

—backfield sensation of  
the New York Giants

## Get Palmolive Rapid-Shave

**SUPER-MOISTURIZED FOR THE FASTEST, SMOOTHEST SHAVES POSSIBLE**

*"My beard's the toughest  
—as rough as they come—  
but it shaves off fast  
and smooth with  
Palmolive Rapid-Shave."*



**Super-Moisturized Lather  
Soaks Whiskers With 17  
Beard-Softening Ingredients**



Rich Rapid-Shave lather is super-moisturized with 17 separate beard-softening ingredients that start to work on contact.



Rapid-Shave sets you up for a fast shave... a smooth shave... a complete shave... a comfortable shave from start to finish.



Try  
Rapid-Shave  
Regular  
or  
Rapid-Shave  
Menthol



**MAKE IT FAST AND MAKE IT SMOOTH—  
USE RAPID-SHAVE IN THE MORNING!**



# NEW KIND OF CHECKING ACCOUNT REMEMBERS TO SAVE FOR YOU { *with interest on your savings too* }

## New CHECK'nSAVE account at Chemical New York gives complete checking service plus painless savings

If you're one of the people who want to save but always seem to put it off, here's good news for you.

Now you can hang on to part of every paycheck in spite of yourself. Just come in and open a CHECK'nSAVE account at Chemical New York. This new kind of account lets you write the checks you want, and saves for you automatically, as well. And, of course, you get interest on your savings compounded every three months.

**How it works.** Just tell us how much a month you want to save—from \$10 on up. Then, on the 5th or 18th of the month—whichever is best for you—we automatically tuck that amount away for you.

We take care of all the details. No paper work, no standing in line, no bookkeeping for you. Every month you get a notice of the money transferred to your savings account—and a statement on your checking account (either Regular or Special).

**CHECK'nSAVE at any of our 105 offices.** You can open your CHECK'nSAVE account in just 15

minutes at any of our 105 offices in Greater New York. Wherever you go, you'll get the friendly, neighborhood bank service you'd expect from "the New York Bank with the hometown touch."

So, if you want to hang on to more than your check stubs, get started now on a program of regular and painless saving, through a CHECK'nSAVE account at Chemical New York.

**Pick your goal—then CHECK'nSAVE for it.**

Your goal	Amount to set aside each month		
	1 year	2 years	3 years
\$200	\$16.67		
300	25.00	\$12.50	
500	41.67	20.83	\$13.89
1000	83.33	41.67	27.77

(Does not include interest compounded every quarter)

Member Federal Deposit Insurance Corporation

**Chemical Bank**  
**New York Trust Company**  
*The New York Bank with the Hometown Touch*

105 Offices In  
Greater New York  
Founded 1824



# 1960 Giant Statistics

## NINE-GAME TEAM RECORD

GIANTS	OPPONENTS
68 First downs, rushing .....	62
79 First downs, passing .....	64
11 First downs, penalty .....	11
158 Total first downs .....	137
2891 Total yards gained .....	2258
1176 Yards gained, rushing .....	973
1715 Yards gained, passing .....	1285
312 Number of rushing attempts .....	313
246 Number of passing attempts .....	215
119 Passes completed .....	106
18 Passes intercepted by .....	18
39.2 Punting average .....	42.0
22 Punts returned .....	13
5.4 Punt return average .....	6.9
29 Kick-offs returned .....	29
20.3 Kick-off return average .....	21.0
39 Penalties .....	42
363 Yards penalized .....	430
36 Fumbles .....	21
9 Opponents fumbles recovered .....	12

## INDIVIDUAL RECORDS

### PASSING

	Att.	Comp.	Int.	Yds.	L.G.	TDs.	Pct.
Shaw .....	136	68	12	1114	71	9	.500
Conerly .....	94	44	4	620	44	4	.468
Grosscup .....	8	4	0	43	19	0	.500
Gifford .....	6	3	1	24	0	0	.500
Morrison .....	1	0	1	0	0	0	.000
Summerall .....	1	0	0	0	0	0	.000

## SCORING

	TD-R	TD-P	TDs	PAT	FG	SFY	Pts.
Summerall .....	0	0	0	22-22	9-19	0	49
Gifford .....	4	3	7	0	0	0	42
Rote .....	0	7	7	0	0	0	42
Triplet .....	4	1	5	0	0	0	30
Morrison .....	1	2	3	0	0	0	18
Crow .....	1	0	1	0	0	0	6
Grier .....	0	0	0	0	0	1	2

### RUSHING

	Att.	Yds.	L.G.	Avg.
Triplet .....	93	449	33	4.8
Morrison .....	86	300	19	3.5
Gifford .....	77	232	15	3.0
Sutton .....	8	71	34	8.9
King .....	12	56	11	6.6
Chandler .....	1	24	24	24.0
Webster .....	11	23	7	2.1
Conerly .....	10	15	17	1.5
Grosscup .....	2	7	5	3.5
Shaw .....	12	-1	11	0.0

### INTERCEPTIONS

	No.	Yds.	L.G.
Patton .....	4	100	34
Lunch .....	2	45	32
Svare .....	1	37	37
Nolan .....	3	32	20
Huff .....	1	16	16
Crow .....	2	3	3
Livingston .....	1	0	0

### KICK-OFF RETURNS

	No.	Yds.	L.G.
Stits .....	12	280	39
Sutton .....	12	223	26
Riley .....	3	67	24
Triplet .....	1	20	20
Brown .....	1	0	0

### RECEIVING

	Att.	Yds.	TDs.	L.G.
Rote .....	33	588	7	71
Sch'ker .....	25	361	0	43
Gifford .....	24	344	3	44
Mor'son .....	24	309	2	51
Webster .....	3	60	0	27
Simms .....	1	58	0	58
Triplet .....	4	38	1	24
Sum'all .....	1	15	0	15
Sutton .....	1	14	0	14
Kimber .....	1	7	0	7
King .....	1	4	0	4
Dess .....	1	3	0	3

### PUNT RETURNS

	No.	Yds.	L.G.
Stits .....	12	93	24
Riley .....	7	25	14
Crow .....	2	1	1
Patton .....	1	0	0

### PUNTING

	No.	Avg.	Lgst.
Chandler .....	16	44.6	54
Conerly .....	18	36.9	59

"He tried to take my  
**Drake's**  
**COOKIES**"





## Giants on Offense

R. H. MORRISON (40)		F. B. TRIPLETT (33)		Q. B. SHAW (15)		L. H. SUTTON (26)	
R. E. SCHNELKER (85)	R. T. YOUSO (72)	R. G. STROUD (66)	C. WIETECH (55)	L. G. CORDILEONE (74)	L. T. BROWN (79)	L. E. ROTE (44)	

## Cowboys on Defense

L. E. BORDEN (87)	L. T. HEALY (62)	M. L. B. TUBBS (50)	R.T. HERCHMAN (72)	R. E. GONZAGA (76)	
L. W. FRANCKHAUSER (32)	L. L. B. HANSEN (52)	L. S. BERCICH (20)	R. S. BUTLER (22)	R. L. B. CRONIN (85)	R. W. BISHOP (44)

## NEW YORK GIANTS ROSTER

No.	Player	Position	Weight	Height	Age	College	Yrs. Pro
11	Grosscup, Lee	QB	185	6:01	23	Utah	1
15	Shaw, George	QB	180	6:00	27	Oregon	6
20	Patton, Jimmy	HB	180	5:10	28	Mississippi	6
21	Riley, Lee	HB	190	6:01	27	Detroit	5
22	Lynch, Dick	HB	200	6:01	24	Notre Dame	3
24	King, Phil	HB-FB	225	6:04	24	Vanderbilt	3
25	Nolan, Dick	HB	185	6:01	28	Maryland	7
26	Sutton, Ed	HB	207	6:01	25	North Carolina	4
29	Webster, Alex	HB	225	6:03	29	N. Carolina State	6
30	Leo, Jim	E-LB	215	6:01	22	Cincinnati	1
33	Triplett, Mel	FB	215	6:01	28	Toledo	6
34	Chandler, Don	HB	205	6:02	25	Florida	5
40	Morrison, Joe	FB-HB	194	6:01	22	Cincinnati	2
41	Crow, Lindon	HB	205	6:01	27	U. S. C.	6
42	Conerly, Charles	QB	185	6:01	39	Mississippi	13
44	Rote, Kyle	E	200	6:00	32	S. M. U.	10
48	Stits, Bill	HB	195	6:00	28	U. C. L. A.	8
52	Schmidt, Bob	C-T	245	6:04	24	Minnesota	3
55	Wietecha, Ray	C	225	6:01	31	Northwestern	8
60	Crawford, Bill	G	235	6:01	23	British Columbia	1
62	Dess, Darrell	G	235	6:00	25	N. Carolina State	3
66	Stroud, Jack	T-G	235	6:01	31	Tennessee	8
70	Huff, Sam	LB	230	6:01	25	West Virginia	5
72	Youso, Frank	T	260	6:04	24	Minnesota	3
73	Jacobs, Proverb	T	255	6:05	25	California	2
74	Cordileone, Lou	T-G	240	6:00	23	Clemson	1
76	Grier, Roosevelt	T	285	6:05	27	Penn State	5
77	Modzelewski, Dick	T	260	6:00	29	Maryland	8
78	Boll, Don	T	272	6:02	33	Nebraska	8
79	Brown, Roosevelt	T	245	6:03	27	Morgan State	8
81	Robustelli, Andy	E	230	6:01	32	Arnold	10
82	Scott, Tom	LB	220	6:02	30	Virginia	8
83	Simms, Bob	E	210	6:01	22	Rutgers	1
84	Svare, Harland	LB	215	6:00	29	Washington State	8
85	Schnelker, Bob	E	215	6:04	30	Bowling Green	8
86	Kimber, Bill	E	190	6:02	24	Florida State	2
88	Summerall, Pat	E	235	6:04	30	Arkansas	9
89	Livingston, Cliff	LB	215	6:03	30	U. C. L. A.	7

### GIANT SPECIAL

Punting—Chandler (34)  
PAT, FG and Kicks—Offs—  
Chandler (1)  
Holding for PAT, FG—  
Kick Returns—Crow (1)  
Riley (21), Sutton (2)

### OFFICIALS

#### Referee

(3) William Downes,

#### Umpire

(20) Frank Sinkov

#### Head Lines

(19) George McA

#### Back Judge

(10) Samuel Giangre

#### Field Judge

(22) Charles Sweeney

### COWBOY SPECIAL

Punting—Sherer  
PAT, FG and Kick—Offs—  
Bielski (36), Lev  
Holding for PAT, FG—  
Heinrich (1)  
Kick Returns—Butler (2)  
(32).

PLEASE USE ENTRANCE RAMP

You deserve

# Calvert

...the whiskey with a "Star"  
insured for one mi



**KICK-OFF**  
**2:05 P.M.**

R. H.  
HOWTON (81)  
R. E.  
DORAN (83)

R. T.  
DICKSON (71)

F. B.  
KOWALCZYK (35)  
R. G.  
GUY (60)

C.  
HOUSER (67)

Q. B.  
HEINRICH (11)  
L. G.  
PUTNAM (61)

**Cowboys on Offense**

L. H.  
McILHENNY (42)  
L. T.  
FRY (75)  
L. E.  
DUGAN (89)

**Giants on Defense**

L. E.  
SCOTT (82)  
L. W.  
CROW (41)

L. T.  
MODZELEWSKI (77)  
L. L. B.  
LIVINGSTON (89)

M. L. B.  
HUFF (70)  
L. S.  
RILEY (21)

R. T.  
GRIER (76)  
R. S.  
PATTON (20)

R. E.  
ROBUSTELLI (81)  
R. L. B.  
SVARE (84)

R. W.  
LYNCH (22)

# **ANT SPECIALISTS**

andler (34), Conerly (42).  
Kicks-Offs—Summerall (88),  
Chandler (34).  
PAT, FG—Conerly (42).  
Crow (41), Stits (48),  
Sutton (26).

## **OFFICIALS**

### **Referee**

m Downes, Illinois Tech.

### **Umpire**

Frank Sinkovitz, Duke

### **Head Linesman**

George McAfee, Duke

### **Back Judge**

Giangreco, Manhattan

### **Field Judge**

Sweeney, Notre Dame

## **BOY SPECIALISTS**

ing—Sherer (86).  
Kick-Offs—Cone (31),  
Lewis (23).  
PAT, FG—LeBaron (14),  
Heinrich (11).  
Butler (22), Franckhauser  
(32).

## **DALLAS COWBOYS ROSTER**

No.	Player	Position	Weight	Height	Age	College	Yrs. Pro
11	Don Heinrich	QB	183	6:00	29	Washington	7
14	Eddie LeBaron	QB	160	5:07	30	C. O. P.	8
17	Don Meredith	QB	196	6:02	22	S. M. U.	1
20	Bob Bercich	HB	185	5:11	24	Michigan State	1
22	Bill Butler	HB	182	5:10	23	Chattanooga	2
24	Jim Mooty	HB	175	5:11	21	Arkansas	1
25	Ray Mathews	HB	205	6:00	32	Clemson	10
31	Fred Cone	FB	198	5:11	34	Clemson	8
32	Tom Franckhauser	HB	190	6:00	23	Purdue	2
33	Gene Babb	FB	220	6:03	25	Austin College	3
35	Walt Kowalczyk	FB	205	6:00	25	Michigan State	3
36	Dick Bielski	E	228	6:01	27	Maryland	6
42	Don McIlhenny	HB	200	6:01	25	S. M. U.	5
44	Don Bishop	HB	204	6:01	24	City Col. of L. A.	2
45	L. G. Dupre	HB	191	5:11	27	Baylor	6
50	Jerry Tubbs	LB	220	6:03	25	Oklahoma	4
51	Tom Braatz	LB	211	6:02	27	Marquette	4
52	Wayne Hansen	LB	228	6:00	32	Texas Western	10
54	Mike Connelly	C	235	6:03	24	Utah State	1
60	Buzz Guy	G	248	6:03	24	Duke	3
61	Duane Putnam	G	221	6:00	31	C. O. P.	9
62	Don Healy	T	273	6:03	23	Maryland	2
63	Mike Falls	G	240	6:01	26	Minnesota	1
66	Ed Husmann	T	230	6:00	28	Nebraska	6
67	John Houser	C	238	6:02	23	Redland University	3
71	Paul Dickson	T	250	6:05	23	Baylor	2
72	Bill Herchman	T	246	6:01	27	Texas Tech	5
75	Bob Fry	T	233	6:04	27	Kentucky	6
76	John Gonzaga	E	250	6:03	27	No College	5
77	Byron Bradfute	T	246	6:03	22	Miss. Southern	1
79	Dick Klein	T	255	6:04	25	Iowa	2
81	Bill Howton	E	195	6:02	29	Rice	8
82	Frank Clarke	E	210	6:01	26	Colorado	4
83	Jim Doran	E	216	6:02	32	Iowa State	9
85	Gene Cronin	LB	228	6:02	26	C. O. P.	5
86	Dave Sherer	E	234	6:03	23	S. M. U.	2
87	Nate Borden	E	240	6:01	27	Indiana	6
89	Fred Dugan	E	195	6:03	26	Dayton	3

ICE RAMP NEAREST YOUR SEAT *23 Woody Lewis*

# Reserve

"Standard of Excellence"  
e million dollars!





*Now...as in the Good Old Days...*

**PARK & TILFORD IS YOUR ASSURANCE OF QUALITY!**



**CONEY ISLAND... 1894** A view of the famous resort's main thoroughfare near the turn of the century. Note the exciting nickelodeon attraction "Corbett's Last Fight"...real "moving pictures" on Edison's Improved Kinetoscope.

**PARK & TILFORD... 1840** When this picture was taken, Park & Tilford was already 54 years old, already famous for its fine whiskeys. Today's Park & Tilford is the finest in its history... *a century of quality in every bottle.*

# PARK & TILFORD

*Fine Whiskeys Since 1840*

RESERVE, the finest-tasting whiskey of its type  
PRIVATE STOCK, America's rich, rare luxury whiskey



PARK & TILFORD, N. Y. • RESERVE, 70% GRAIN NEUTRAL SPIRITS • PRIVATE STOCK, BLEND OF STRAIGHT WHISKEYS • ALL 86 PROOF.



# Looking Over the Cowboys



**EDDIE LE BARON**

**T**OSSING a brand new team into the National Football League snakepit has been no happy lark for old buddy Tom Landry. The Dallas Cowboys, conjured up out of thin air as a thirteenth NFL entry since last season, haven't won a game as they prepare to face the Giants here.

That doesn't mean that the Cowboys don't have a good football team. It merely emphasizes the fact that more than just a good team is needed to make the grade in football's big league.

The record bars description of Dallas as one of the league's powers. But the Giants won't send the Cowboys galloping away in defeat merely by showing up and going through the motions. There are many fine players on this new NFL entry and, particularly here in the Big Town where Landry made his name, they'll be out to vindicate themselves.



**TOM LANDRY**

The Dallas roster consists of seven rookies plus thirty survivors of the thirty-six experienced players made available to the Cowboys from the 1959 rosters of the other twelve NFL members.

Let's run rapidly over the seasoned Cowboy contingent. Eddie LeBaron, for instance, needs no introduction to Giant fans. He gave the Giants many a fit here in the well-launched regalia of the Washington Redskins. Dallas has another quarterback of demonstrated talent in Don Heinrich, the former Giant.

The ball-carrying corps includes Don McIlhenny, L. G. Dupre, Gene Babb and Walt Kowalczyk. Jim Doran, Woodley Lewis, Leo Dugan, Dick Bielski, Billy Howton and Ray Mathews are available



**BILL HOWTON**

for service at the ends and flanker posts. The offensive line is headed by Duane Putnam, who won all-league honors several times with the Rams.

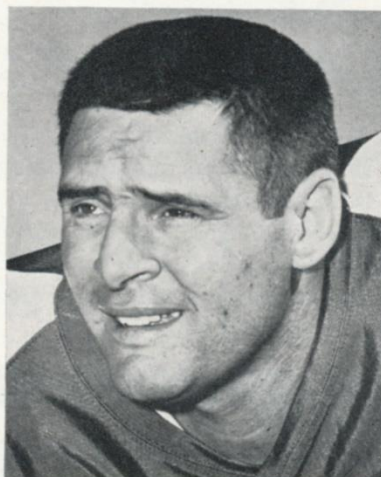
Among the leaders of the defensive platoon are Nate Borden and Don Healy, up front; Jerry Tubbs, middle line-backer, and Tom Franckhauser and Bill Butler, in the deep secondary.

These established pros are carrying the chief load but behind them some talented youngsters are beginning to work their way up. Among them are Don Meredith, S. M. U.'s All-America quarterback of 1959; Bob Bercich of Michigan State and Jim Mooty of Arkansas, defensive tigers in the back line, and Mike Connelly, a husky center from Utah State.

Dallas may be suffering now but the Cowboys have a bright future.



**JIM DORAN**



**DUANE PUTNAM**



**BILL BUTLER**



# NOW...A FILTER MADE OF TOBACCO ITSELF!

Kentucky Kings  
with the  
all-tobacco filter  
for that  
all-tobacco taste



All  
Tobacco  
Filter

SMOOTHS THE SMOKE  
NATURALLY...  
yet never dulls  
the taste as  
artificial filters do

KING-SIZE  
POPULAR PRICE

A NEW KIND OF CIGARETTE! NEW KENTUCKY KINGS WITH THE ALL-TOBACCO FILTER MADE OF GOLDEN TOBACCO CUT FILTER-FINE

Now comes the best news smokers ever had. New Kentucky Kings has discovered the way to make a filter of tobacco itself. Yes, Kentucky Kings is a new kind of cigarette—the only cigarette with the all-tobacco filter for that all-tobacco taste. Filters the smoke naturally for that

all-tobacco taste—never dulls the flavor as artificial filters do. Improves smoking with smoothness you miss in every other all-tobacco cigarette. Enjoy new Kentucky Kings with the all-tobacco filter... the great idea... the great taste in smoking today.

TAKE IT  
FROM A  
TOBACCO  
EXPERT



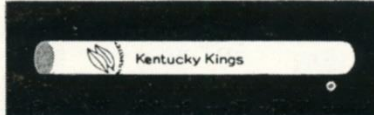
See how the all-tobacco filter is created from golden tobacco cut filter-fine.



Filter-fine tobacco is made into the all-tobacco filter by patented machines.



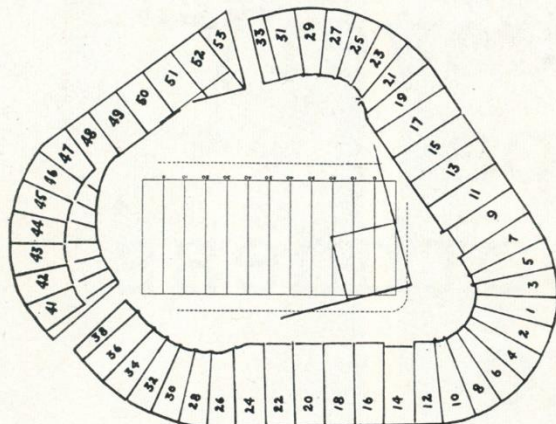
Kentucky Kings combines the all-tobacco filter with a luxury blend of tobaccos.



Only new Kentucky Kings with the all-tobacco filter smooths the smoke naturally, yet never dulls the taste as artificial filters do. Kentucky Kings—the all-tobacco filter for that all-tobacco taste.



# Yankee Stadium Services & Facilities



**LOST AND FOUND**—Direct inquiries and reports to James K. Thomson, the Stadium Manager. Any attendant will direct you to his office.

**REST ROOMS**—**Men:** Gate 2, Press Gate, Stadium Club (lower, upper), Gate 6; Lower Sections 34, 8, 6, 15, 21, 27; Mezzanine Sections 27, 15, 5, 18, 28; Upper Sections 34, 20, 6, 15, 21; Blyeacher Sections 43, 47, 52. **Women:** Gate 2, Gate 4, Stadium Club (lower, upper), Gate 6; Lower Sections 28, 20, 5, 15, 27; Mezzanine Sections 21, 15, 6, 18, 34; Upper Sections 28, 20, 5, 15, 29; Bleacher Sections 47, 52.

**PUBLIC TELEPHONES**—Gate 2, Gate 4, Press Gate, Stadium Club (lower, upper), Gate 6, Lower Sections 24, 14, 12, 11, 17, 27; Mezzanine Sections 27, 17, 7, 8, 22; South side 157th St., Ruppert Pl. to Cromwell Ave. Upper Sections 34, 20, 12, 8, 9, 19, 27; Bleacher Sections 41, 49, 51.

## PARKING AREAS YANKEE LOTS

South side 157th St., Ruppert Pl. to Cromwell Ave.  
Between Cromwell and River Aves., on 153rd St.  
163rd to 164th Sts., between River and Gerard Aves.  
151st St. and River Ave., opposite Bronx County jail.

## PRIVATELY-OWNED LOTS

West side Ruppert Pl., between 157th and 158th Sts.  
West side River Ave., between 151st and 153rd Sts.  
West side River Ave. and 157th St.  
East side River Ave., North of 153rd St.  
East side River Ave., North of 151st St.  
East side River Ave., 164th to 165th Sts.  
East side River Ave., South of 162nd St.  
Farmer's Square—Cromwell Ave. Roadway, and  
West of 151st St. Viaduct, opposite Bronx County Jail.  
East 168th St. and River Ave.

## GARAGES

Cromwell Ave. and 157th St.  
East side of River Ave., South side of 158th St.  
East side of River Ave., North side of 157th St.  
East side of River Ave., South side of 157th St.  
North side of 158th St., between River and Gerard Aves.

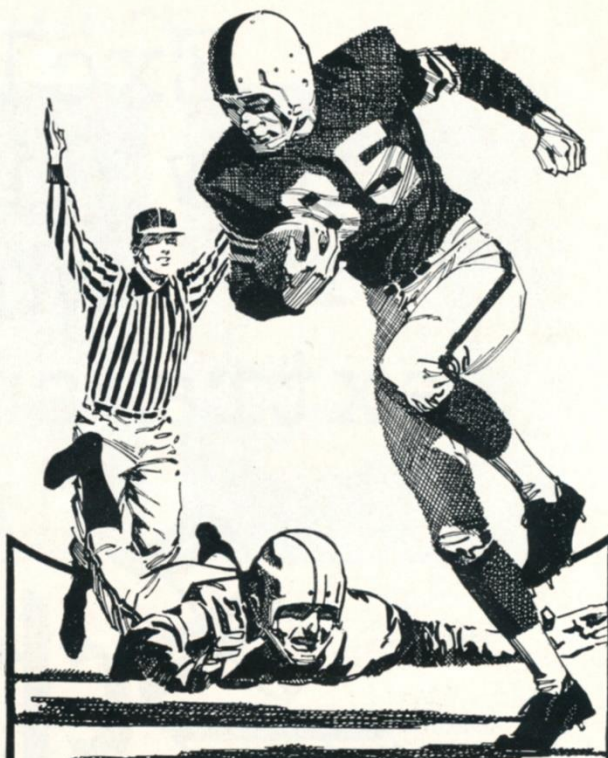
Also, the Polo Grounds lot again will be in service for all Giant games at the Stadium.

## SOUVENIR PRICE LIST

Rooter Badge (All Teams) ..	.25	Plastic Cushion .....	1.00
Picture Set (36 Players)...	.50	Stadium Cap (ear laps)....	2.00
Team Pennants (large) ..	.75	Knitted Hat .....	1.50
Pen and Pencil Set .....	.75	Football (small) .....	1.50
Player Doll (small) .....	.75	Football (large) .....	3.00
Giants Player Trophy .....	1.00		

Souvenir Stands located at Gates 2, 4, 6; Lower Sections 7, 14; Mezzanine Section 10; Bleacher Sections 43, 50.

These items also are available by mail from Harry M. Stevens, Inc., Souvenir Department, Yankee Stadium, Bronx 51, N. Y.



All 13 National League  
Professional football teams  
chose **UNITED AIR LINES**  
for team travel this year.



The big reason more athletic  
organizations chose **UNITED**  
is the *extra care* **UNITED**  
takes with every detail of  
their trips...from the  
planning to the personal,  
attentive, dependable service.

For reservations on United Jet  
Mainliners call your Travel Agent or  
United Air Lines.



THE EXTRA CARE LINE



Exclusive  
new discovery  
whips  
extra smoothness  
into

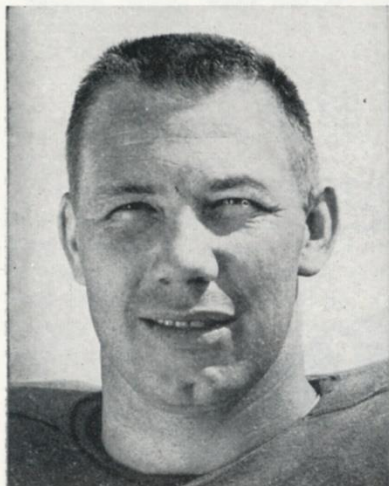
**Schenley**  
WHISKY



**AFTER THE GAME...TASTE THE DIFFERENCE**  
Schenley Distillers Co., N. Y. C. • Blended Whisky, 86 Proof, 65% Grain Neutral Spirits.



# Giant Gallery



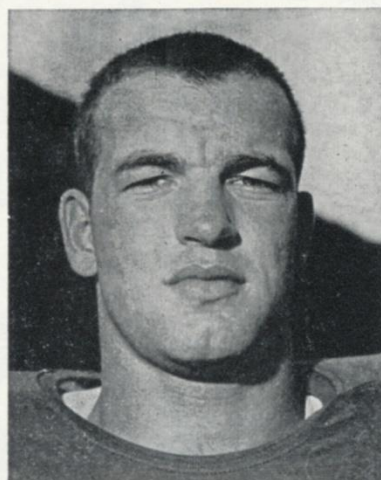
*Landon Crow*

**Landon Crow (41)** has been a key spoke in the Giants' deep secondary defense ever since his acquisition from the Cardinals in the 1958 trade that also brought Pat Summerall here. The 200-pound Southern California alumnus tackles fiercely and covers pass receivers tenaciously from the left wing position. He also is a reliable fielder of punts.



*Bob Schnelker*

In a quiet, inconspicuous way, **Bob Schnelker (85)** has become one of the N. F. L.'s best clutch pass catchers. From the tight end berth where he also provides solid blocking, he has busted out to haul down 27 TD passes in his six full seasons with the Giants, who acquired him from the Eagles in 1954. A Bowling Green grad, Bob was drafted by the Browns in 1953.



*Joe Morrison*

The way **Joe Morrison (40)** is shaping up, the Giants feel they have a real crackerjack in this bright young man from the University of Cincinnati. As a pro sophomore, Joe has taken a firm hold on a regular job in the offensive backfield. He fits in equally well at fullback and halfback. His running has been particularly impressive.

## Enjoy em at the Game and at Home

Here at the Yankee Stadium, reach for MRS. WAGNER'S delicious individual pies. At home, enjoy the fresh-baked goodness of MRS. WAGNER'S family-size pies. Both ways, you're in for real enjoyment.



## Why bake when you can buy

*Mrs. Wagner's Pies*



# League Leaders!

The Top Bourbon ... Like the Top  
Football Team ... has Quality!

## J.W. DANT WORLD'S LARGEST SELLING BONDED BOURBON



Take your choice of the two Kentucky favorites—Dant 100 Proof Bottled in Bond or J. W. Dant 86 Proof ... its mild, light, lower-priced partner.

### NATIONAL LEAGUE LEADERS

Rushing	Brown, Cleveland, 164-912 yds.
Passing	Plum, Cleveland, 115 of 170-1705 yds.
Receiving	Berry, Baltimore, 61-1147 yds.
Scoring	Hornung, Green Bay, 129 pts.
Punting	Green, Pittsburgh, 45.2-yd. avg.
Punt Returns	Woodson, San Francisco, 13-174 yds.
Kick-Off Returns	Mitchell, Cleveland, 9-293 yds.
Interceptions	Norton, St. Louis, 9-83 yds.





# Giant Blackboard: Draw Play

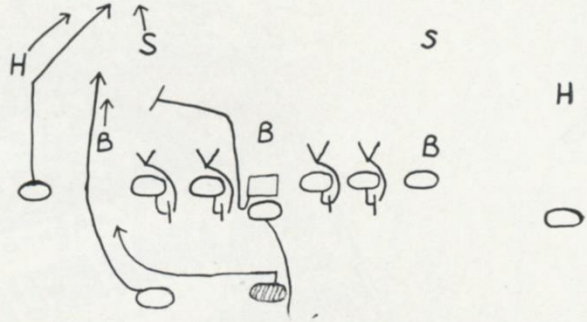
THE delayed buck or draw play has been a staple item in every team's attacking repertoire ever since pro football, influenced by the Chicago Bears, went whole hog for the T formation right after World War II. Old-line fans may still even call the play the Bear Trap.

Used most frequently in passing situations, the draw is designed to counter opposing defensive measures against the indicated pass. Standard defensive procedure in a pass situation calls for a hard rush of the passer by the line, with the linebackers dropping back to assume territorial responsibility in the shallow zones.

The draw diagrammed is a variation of the normal delayed thrust up-the-middle. This version, which has worked well for the Giants with Mel Triplett carrying, calls for the carrier to take an outside course.

On taking the snap, the quarterback retreats as though to pass. The interior offensive linemen wheel back, too, as though to set up the pass-protection pocket discussed in a previous issue. But instead of taking inside blocking positions to keep the middle open for the passer, the linemen maneuver so as to be between the men they are assigned to block and the direction of the ensuing run.

The quarterback slips the ball to the fullback, who has held position in blocking stance. He takes



one step forward, then swings to the side (left in this diagram).

At a glance, it can be seen that the right linebacker is the chief immediate threat. The hope is that he'll retreat to help cover the left halfback's break downfield into pass-catching territory.

If the backer doesn't take this bait, or is coming up irregardless on a "red-dog" assignment, the center probably won't be able to block him in time. Let this happen and when the play next is called, the center probably will pull and lead the carrier in the manner of a running guard.

Refinements like this help explain why even All-Americans generally have to put in a couple of seasons of apprenticeship before they qualify as real football pros.

## EVERYBODY GETS A KICK OUT OF THESE WONDERFUL GIFTS— WATCHBANDS

By *Forstner*®

EXCLUSIVE CREATIONS THAT LEND  
NEW BEAUTY TO EVERY WATCH!

Most admired because these ultra-thin, luxurious looking watch bracelets are so distinctively designed, so finely made. Smooth, cool, comfortable, completely flexible, instantly adjustable to wrist size. See a variety of KOMFIT and AMERICANA styles at better jewelers everywhere.

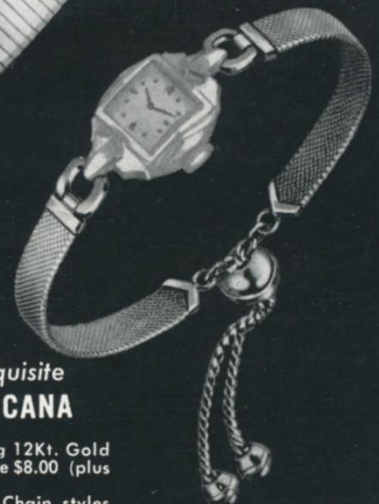
*Forstner*  
JEWELRY'S NAME FOR QUALITY

FORSTNER, INC., Irvington, N. J.



the unique  
**KOMFIT**® "Grand"

12Kt. Gold Filled with  
Stainless Steel lining  
\$15.40 (plus Fed. Tax).  
All Stainless Steel \$8.95  
(no tax)



the exquisite  
**AMERICANA**

New gleaming 12Kt. Gold  
Filled mesh style \$8.00 (plus  
Fed. Tax).  
Square Snake Chain styles  
from \$7.50.





# "THESE FRANKFURTS ARE HICKORY SMOKED!"

Enjoy 'em at home, the circus, the football field, *everywhere!*  
Take your choice—regular or all-beef franks—both are *all meat!* Both deliciously hickory-smoked! Available in jars and cellophane, too. By famous...

## Stahl-Meyer



FAMOUS FERRIS HICKORY SMOKED CANNED HAM AND FERRIS BACON ARE TWO  
MORE FINE PRODUCTS MANUFACTURED AND KITCHEN TESTED BY STAHL-MEYER INC.





## The most comfortable fashions are officially approved by the NFL!

Something new in boxer shorts! The young quarterback models Jockey® brand boxer shorts, 100% cotton, full cut Seamfree® one piece construction, \$1.50. The pass receiver wears the Jockey brief, acetate tricot knit with heat resistant waist band. Famous Jockey comfort features, \$1.95. Distinctive all over print of National Football League emblems or referee signals on light green, blue or gray.

The Textron pajamas are fine wash and wear cotton broadcloth, \$5. Matching Huddle coat, draped over chair, can be used for sleeping, shaving and as a robe, \$5. Pajamas and Huddle coat available in Him and Her sets. Your favorite team emblem is featured in the distinctive patterns styled by Harwood.

**OFFICIAL NFL TEAM MERCHANDISE IS FEATURED IN YOUR CITY AT:**

Abraham & Straus, 422 Fulton St., Brooklyn

Arnold Constable Corp. 435 Fifth Avenue

And other leading department stores, men's and boys' shops and sporting goods stores.



# RUPPERT PEOPLE

*have a thirst for living!*



A *thirst* for living means a *taste* for Ruppert! Ruppert is the light lively beer for people who live livelier lives. Four generations of the Ruppert family have seen to it *personally* that Ruppert has the finest flavor your money can buy. So live a little! Open up a Ruppert and swallow deep.

*Have a Ruppert! Brewed since 1867 by four generations of the Ruppert family!*



*Bright  
new  
label...  
same  
fine  
Ruppert!*

© 1960, JACOB RUPPERT, NEW YORK CITY



# Giant Jottings

(Continued from Page 11)

at Philadelphia last Sunday. In the first Eagles game here two weeks ago, George Shaw and Dick Modzelewski were the Coro winners. Modzelewski also bagged the Van Heusen Pleasure-Wear Award as the top Giant performer in the game. . . . Having his greatest year as a Giant, Rote, with three games to go, already has grabbed 33 passes for 588 yards, as against his top previous whole-season total of 31 catches for 580 yards in 1955.

**CHRISTMAS GIFT SUGGESTION:** Giant fans, young, old and in-between, will appreciate receiving copies of *THE NEW YORK GIANTS* (Coward-McCann) by Don Smith, the Giant publicity director; *THE FORWARD PASS* (E. P. Dutton), by Charlie Conerly, in collaboration with Tom Meany, and *THE FRANK GIFFORD STORY* (G. P. Putnam), also from the facile pen of Mr. Smith.

The Catholic Big Brothers of New York are represented 500 strong at today's Giant game. . . . Six hundred disabled war veterans are here as guests of the Department of New Jersey Marine Corps League. Brig. Gen. Walter A. Churchill, the national commandant of the Marine Corps League, is accompanying them. . . . Those pert costumes worn by the Giant cheerleaders are Perky Outfits, designed by Mona Roset for Modern Juniors.

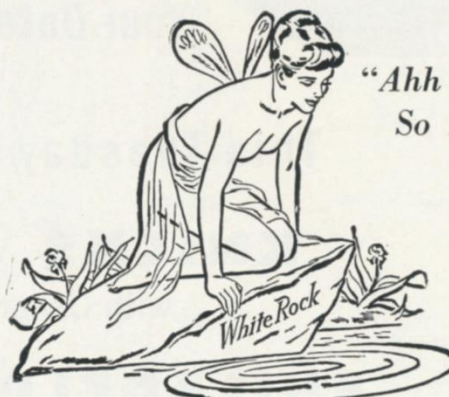
Bill Crawford, elevated to the Giant roster from the "taxi squad," is the first Canadian born and trained player to make the grade in the National Football League. A native of New Westminster, B. C., Bill attended British Columbia University. He's a promising guard. . . . Dr. Francis J. Sweeny is celebrating his thirty-first season as Giant team physician. Doc has only one complaint. He has been kept much, much too busy this season.

The Giants had won nine straight road games before they ran into that road block at Philadelphia last Sunday. . . . Kyle Rote will have Tex Schram, the general manager of the Dallas Cowboys, as his guest at tomorrow's luncheon meeting of the Pro Quarterback Club at Leone's Restaurant. Tom Landry also may be on hand. . . . Credit Dan Rubin for those photos of the Giants that you see in this and other Giant programs.

## GIANTS vs. ALL OPPONENTS

Opponent	W.	L.	T.	Pts.	Opp. Pts.
Baltimore Colts	2	3	0	88	102
Chicago Bears	14	20	2	451	554
Cleveland Browns	11	11	1	355	382
Detroit Lions	5	8	1	177	285
Green Bay Packers	15	14	2	425	396
Los Angeles Rams	3	7	0	208	224
Philadelphia Eagles	33	20	1	1011	838
Pittsburgh Steelers	29	19	2	899	699
St. Louis Cardinals	29	9	0	890	594
San Francisco 49ers	3	1	0	99	81
Washington Redskins	30	17	2	986	775

# SEASON AFTER SEASON . . .



"Ahh . . .  
So Pure!"

## She's New York's Best Girl!

# White Rock

for sparkling fine beverages

The White Rock Girl stays so popular because the brand she represents satisfies so completely! Thanks to *Superior carbonation*, a White Rock drink keeps sparkling from the first pour to the last sip. So for a lighter-livelier drink every time, don't just mix it . . . *White Rock it!*







This Tuesday **NBA Doubleheader**

**KNICKS vs CINCINNATI**

with Oscar "Big O" Robertson

**PHILADELPHIA WARRIORS**

with Wilt "The Stilt" Chamberlain

vs

**SYRACUSE NATIONALS**

Dolph Schayes & Co.

---

This Wednesday **HOCKEY**

**RANGERS vs DETROIT**

---

This Friday **COLLEGE BASKETBALL**

TRIPLEHEADER

**ST. JOHN'S vs KANSAS**

**MANHATTAN vs LAFAYETTE**

**SETON HALL vs CINCINNATI**

---

Next Sunday **HOCKEY**

**RANGERS vs BOSTON**

---



# NATIONAL LEAGUE OFFICIALS' SIGNALS



Offside



Crawling, Pushing,  
Helping Runner



Illegal Motion



Illegal Pass



Unsportsmanlike  
Conduct



Pass Interference



Holding, Illegal  
Use of Hands



Personal Foul  
(indication of  
offense follows)



Delay of Game,  
Excess Time-Out



Touchdown, Field  
Goal, Extra Point



Safety



Loss of Down



Penalty Declined,  
Incomplete Pass,  
Missed Goal



First Down



Dead Ball



No Time-Out or  
Time In with Whistle



Time-Out

Enjoy  
**MELROSE**  
Whiskey Born Great!



## "A Toast to Greatness"

There's royal pleasure for you in Melrose . . . an incredibly smooth blend selected from our treasured reserves. Rich and mellow—yet light and appealing. Tonight, make yours MELROSE—the toast to greatness.



SUPERLATIVE BLENDED WHISKEY, 86 PROOF, 65% GRAIN NEUTRAL SPIRITS, MELROSE DISTILLERS CO., NEW YORK, N. Y.



# NFL Pairings and Results

Home Team		Visiting Team		Home Team		Visiting Team	
NEW YORK		DALLAS		BALTIMORE		DETROIT	
Won 5, Lost 3, Tied 1		Won 0, Lost 10		Won 6, Lost 3		Won 4, Lost 5	
21—@ San Francisco .....	19	28—Pittsburgh .....	35	20—Washington .....	0	9—@ Green Bay .....	28
35—@ St. Louis .....	14	25—Philadelphia .....	27	42—Chicago .....	7	10—San Francisco .....	14
19—@ Pittsburgh .....	17	14—@ Washington .....	26	21—@ Green Bay .....	35	10—@ Philadelphia .....	28
24—Washington .....	24	7—Cleveland .....	48	31—Los Angeles .....	17	30—Baltimore .....	17
13—St. Louis .....	20	10—@ St. Louis .....	12	17—@ Detroit .....	30	35—@ Los Angeles .....	48
17—@ Cleveland .....	13	7—Baltimore .....	45	45—@ Dallas .....	7	24—@ San Francisco .....	0
27—Pittsburgh .....	24	13—Los Angeles .....	38	38—Green Bay .....	24	12—Los Angeles .....	10
10—Philadelphia .....	17	7—@ Green Bay .....	41	24—@ Chicago .....	20	7—@ Chicago .....	28
23—@ Philadelphia .....	31	14—San Francisco .....	26	22—San Francisco .....	30	23—Green Bay .....	10
—Dallas .....	—	7—@ Chicago .....	17	—Detroit .....	—	—@ Baltimore .....	—
—@ Washington .....	—	—@ New York .....	—	—@ Los Angeles .....	—	—Dallas .....	—
—Cleveland .....	—	—@ Detroit .....	—	—@ San Francisco .....	—	—Chicago .....	—
189	179	132	315	260	170	160	183
ST. LOUIS		PHILADELPHIA		CHICAGO		GREEN BAY	
Won 5, Lost 4, Tied 1		Won 8, Lost 1		Won 5, Lost 3, Tied 1		Won 5, Lost 4	
43—@ Los Angeles .....	21	24—Cleveland .....	41	17—@ Green Bay .....	14	14—Chicago .....	17
14—New York .....	35	27—@ Dallas .....	25	7—@ Baltimore .....	42	28—Detroit .....	9
27—@ Philadelphia .....	31	31—St. Louis .....	27	34—Los Angeles .....	27	35—Baltimore .....	21
14—@ Pittsburgh .....	27	28—Detroit .....	10	27—San Francisco .....	10	41—San Fran. @ Mil. .....	14
12—Dallas .....	10	31—@ Cleveland .....	29	24—@ Los Angeles .....	24	19—@ Pittsburgh .....	13
20—@ New York .....	13	34—Pittsburgh .....	7	7—@ San Francisco .....	25	24—@ Baltimore .....	38
44—Washington .....	7	19—Washington .....	13	20—Baltimore .....	24	41—Dallas .....	7
27—@ Cleveland .....	28	17—@ New York .....	10	28—Detroit .....	7	31—Los Angeles @ Mil. .....	33
26—@ Washington .....	14	31—New York .....	23	17—Dallas .....	7	10—@ Detroit .....	23
17—Cleveland .....	17	—@ St. Louis .....	—	—Green Bay .....	—	—@ Chicago .....	—
—Philadelphia .....	—	—@ Pittsburgh .....	—	—@ Cleveland .....	—	—@ San Francisco .....	—
—Pittsburgh .....	—	—@ Washington .....	—	—@ Detroit .....	—	—@ Los Angeles .....	—
244	203	242	185	181	180	243	175
CLEVELAND		WASHINGTON		LOS ANGELES		SAN FRANCISCO	
Won 5, Lost 3, Tied 1		Won 1, Lost 6, Tied 2		Won 3, Lost 5, Tied 1		Won 5, Lost 4	
41—@ Philadelphia .....	24	0—@ Baltimore .....	20	21—St. Louis .....	43	19—New York .....	21
28—Pittsburgh .....	20	26—Dallas .....	14	9—@ San Francisco .....	13	13—Los Angeles .....	9
48—@ Dallas .....	7	24—@ New York .....	24	27—@ Chicago .....	34	14—@ Detroit .....	10
29—Philadelphia .....	31	27—Pittsburgh .....	27	17—@ Baltimore .....	31	10—@ Chicago .....	27
31—@ Washington .....	10	10—Cleveland .....	31	24—Chicago .....	24	14—Green Bay @ Mil. .....	41
13—New York .....	17	7—@ St. Louis .....	44	48—Detroit .....	35	25—Chicago .....	24
28—St. Louis .....	27	13—@ Philadelphia .....	19	38—@ Dallas .....	13	0—Detroit .....	24
10—@ Pittsburgh .....	14	14—St. Louis .....	26	10—@ Detroit .....	12	26—@ Dallas .....	14
17—@ St. Louis .....	17	10—@ Pittsburgh .....	22	33—Green Bay @ Mil. .....	31	30—@ Baltimore .....	22
—Washington .....	—	—@ Cleveland .....	—	—San Francisco .....	—	—@ Los Angeles .....	—
—Chicago .....	—	—New York .....	—	—Baltimore .....	—	—Green Bay .....	—
—@ New York .....	—	—Philadelphia .....	—	—Green Bay .....	—	—Baltimore .....	—
245	167	131	227	227	236	151	175

## NATIONAL LEAGUE LEADERS

### RUSHING

1. Brown, Cleveland .....	164 for 912 yds.
2. Crow, St. Louis .....	142 for 773 yds.
3. Taylor, Green Bay .....	162 for 758 yds.

### PASSING

1. Plum, Cleveland .....	115 of 170 for 1705 yds.
2. Unitas, Baltimore .....	139 of 264 for 2400 yds.
3. Van Brocklin, Philadelphia .....	124 of 222 for 1934 yds.

### RECEIVING

1. Berry, Baltimore .....	61 for 1147 yds.
2. Randle, St. Louis .....	55 for 760 yds.
3. Gibbons, Detroit .....	42 for 451 yds.

### SCORING

1. Hornung, Green Bay .....	129 pts.
2. Walston, Philadelphia .....	86 pts.
3. Randle, St. Louis .....	72 pts.

## NATIONAL LEAGUE STANDINGS

### EASTERN CONFERENCE

	W.	L.	T.	Pct.	Points For	Points Against
Philadelphia .....	8	1	0	.889	242	185
NEW YORK .....	5	3	1	.625	189	179
Cleveland .....	5	3	1	.625	245	157
St. Louis .....	5	4	1	.556	244	203
Pittsburgh .....	4	5	1	.444	206	216
Washington .....	1	6	2	.143	131	227

### WESTERN CONFERENCE

Baltimore .....	6	3	0	.667	260	170
Chicago .....	5	3	1	.625	181	180
Green Bay .....	5	4	0	.556	243	175
San Francisco .....	5	4	0	.556	151	175
Detroit .....	4	5	0	.444	160	183
Los Angeles .....	3	5	1	.375	227	236
Dallas .....	0	10	0	.000	132	315

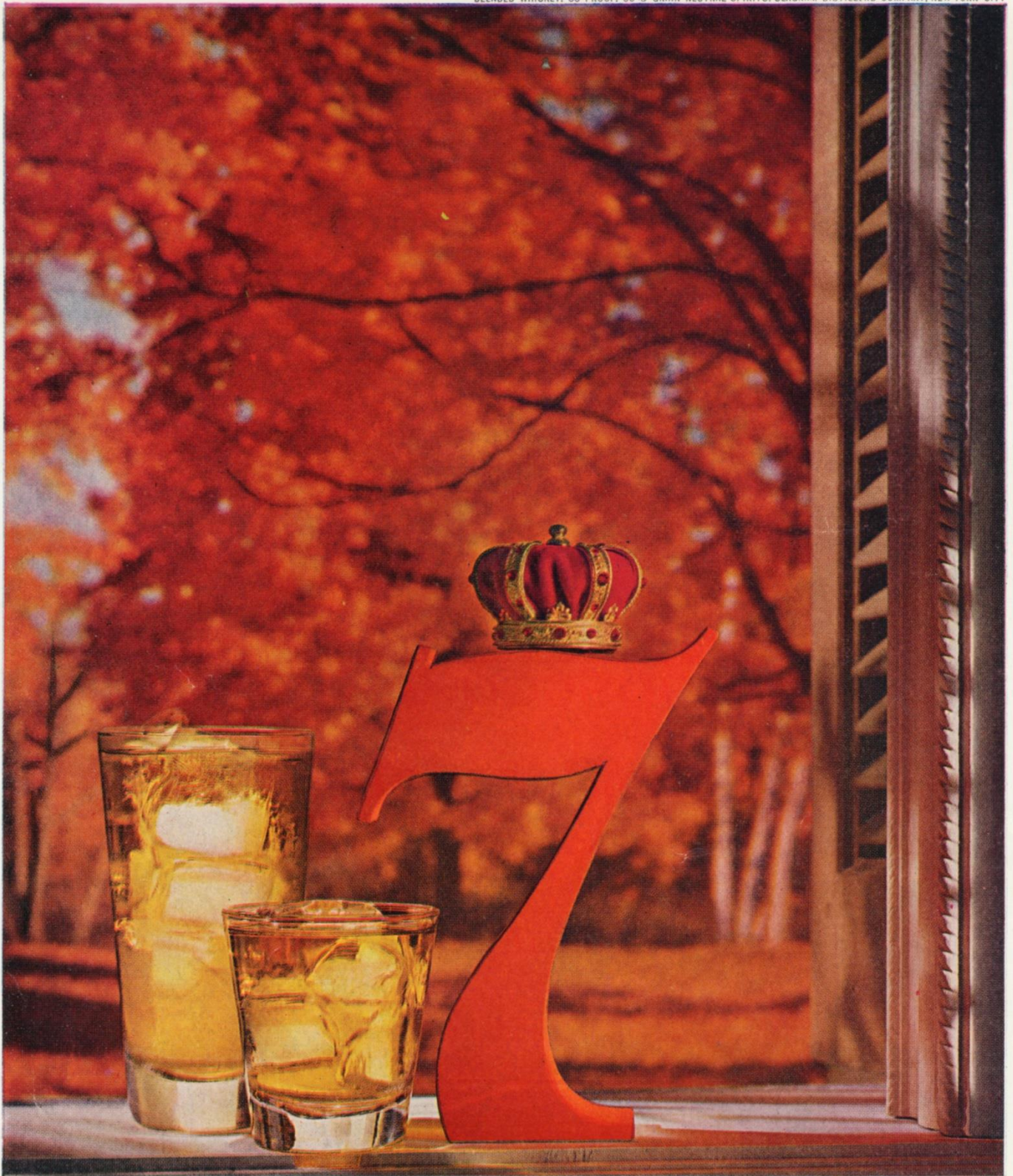
## PITTSBURGH — BYE

Won 4, Lost 5, Tied 1

35—@ Dallas .....	28
20—@ Cleveland .....	28
17—New York .....	19
27—St. Louis .....	14
27—@ Washington .....	27
13—Green Bay .....	19
7—@ Philadelphia .....	34
24—@ New York .....	27
14—Cleveland .....	10
22—Washington .....	10
—Philadelphia .....	—
—@ St. Louis .....	—
206	216

PLEASE USE ENTRANCE RAMP NEAREST YOUR SEAT





Invitation  
to Relaxation The time is twilight, the mood is mellow, the drink is  
7 Crown—the happiest combination to end a long day's labors. If you haven't savored these  
rewards of relaxation, do so tonight, keeping in mind the spirit of the hour is the whiskey that delivers  
clarity and character of taste surpassing any other. **SAY SEAGRAM'S AND BE SURE**





L&M TAKES YOU TO A DIFFERENT CAMPUS EVERY  
SATURDAY FOR COLLEGE FOOTBALL AT ITS BEST  
...ABC-TV, STARTS SEPT. 17.

**L&M**  
has found  
the secret  
that  
**UNLOCKS  
FLAVOR**  
in a filter  
cigarette



IN L&M, WITH THE PURE WHITE MIRACLE TIP... *FINE TOBACCOS CAN BE BLENDED*

*NOT TO SUIT A FILTER - BUT TO SUIT YOUR TASTE...* **REACH FOR FLAVOR - REACH FOR L&M**