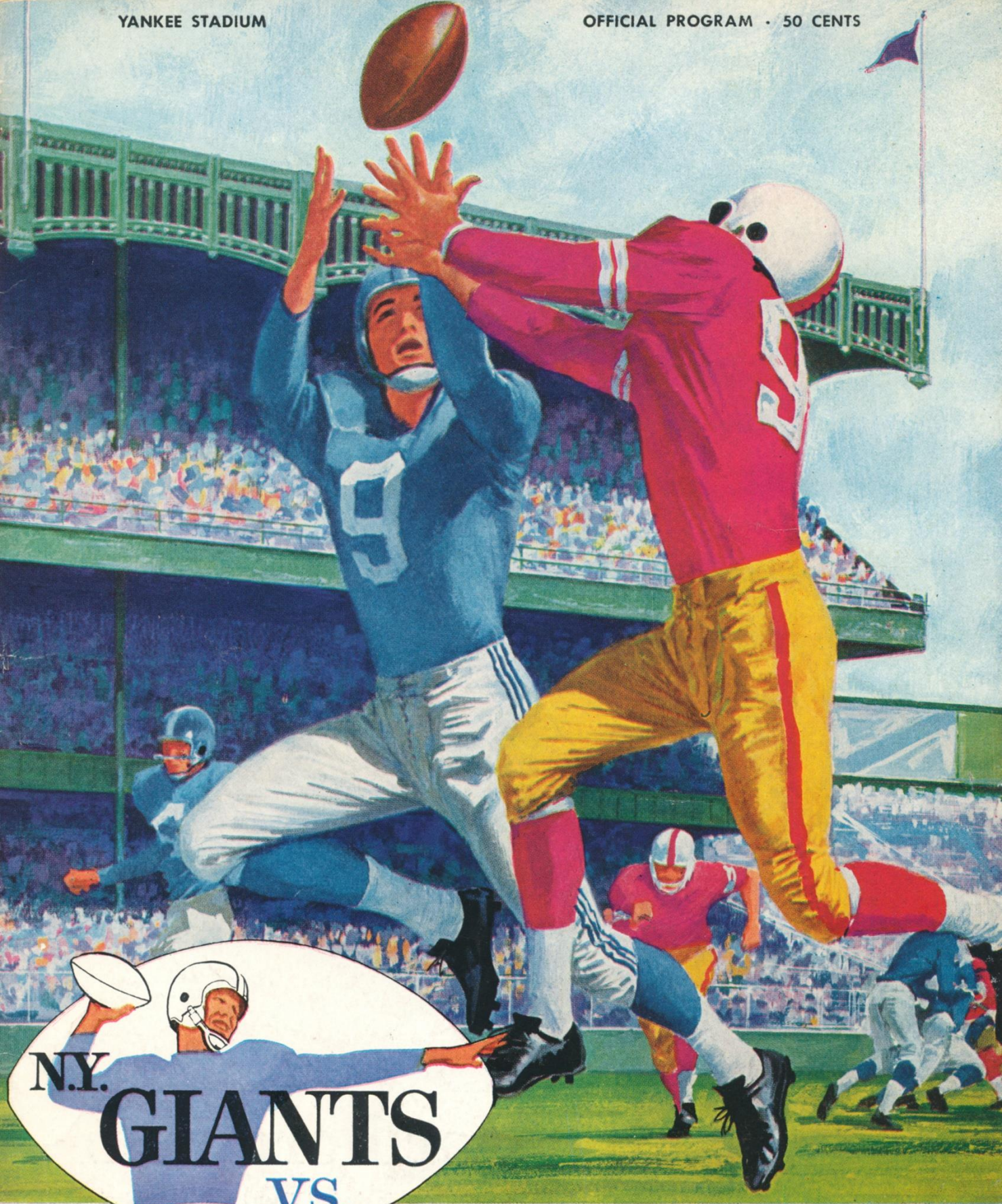


YANKEE STADIUM

OFFICIAL PROGRAM • 50 CENTS



N.Y.  
**GIANTS**  
VS.

CLEVELAND

DECEMBER 18, 1960

**BROWNS**





# Marlboro Men

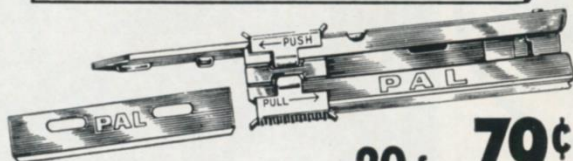
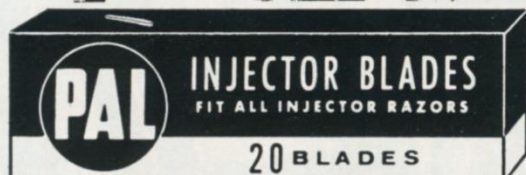
Recognize them in civvies? When they are not playing football, these five New York Giants are members of the Marlboro sales team. Here's the way they look as they travel around the country, making new friends for "the filter cigarette with the unfiltered taste". Take their advice and try Marlboro. You get a lot to like.



# PAL<sup>®</sup>

## INJECTOR BLADES

**SPONSOR**  
NATIONAL LEAGUE  
**PRO-FOOTBALL**  
EVERY SUNDAY  
**CBS-TV**




**20 for 79¢**

Why pay an extra 19¢ for Injector Blades? Pal Injector Blades are made of the finest steel, using the latest production methods, yet they cost 19¢ less! And, Pal Injector Blades fit all injector razors.

*Buy the Best  
for Less!*

**PAL**  
**INJECTOR BLADES**

PRECISION  PRODUCTS

A•S•R PRODUCTS COMPANY • NEW YORK 17, N. Y.

OFFICIAL PROGRAM

NEW YORK

GIANTS



**vs. CLEVELAND BROWNS**

YANKEE STADIUM • Dec. 18, 1960

Volume 36

Number 6

### CONTENTS

Salute to a Great Giant .....	3
Giant Gallery .....	5 and 13
Yankee 1961 Ticket Plans .....	7
Giant Coaching Staff .....	9
Giant 1961 Season Subscriptions .....	9
Jottings on the Giants .....	11
Giants' 1960 Statistics .....	15
Giants' Roster and Line-up .....	16
Browns' Roster and Line-up .....	17
Looking Over the Browns .....	19
Yankee Stadium Services .....	21
Giant Gallery .....	23
Giant Blackboard: Motion Series .....	25
Giants-Browns Series Review .....	29
Giants vs. All Opponents .....	29
N. F. L. Officials' Signals .....	31
Today's N. F. L. Pairings—1960 Results .....	32
N. F. L. Standings and Leaders .....	32

### New York Football Giants

JOHN V. MARA .....	President
WELLINGTON T. MARA .....	Vice-President
RAYMOND J. WALSH .....	General Manager
TIMOTHY J. MARA .....	Secretary-Treasurer
JIM LEE HOWELL .....	Head Coach
AL SHERMAN .....	Offensive Coach
HARLAND SVARE .....	Defensive Coach
ANDY ROBUSTELLI .....	Assistant Defensive Coach
JIM PATTON .....	Assistant Defensive Coach
ED KOLMAN .....	Line Coach
KEN KAVANAUGH .....	End Coach
WALT YOWARSKY .....	Assistant Coach and Scout
JOHN JOHNSON, SID MORET and JOHN DZIEGIEL .....	Trainers
DR. FRANCIS SWEENEY .....	Physician
DR. ARTHUR CROKER .....	Dentist
DON SMITH .....	Director of Publicity
DAN RUBIN .....	Team Photographer

Cover Illustration by Carol Johnson

This book published by  
HARRY M. STEVENS, Inc.  
320 Fifth Avenue  
New York 1, N. Y.



# Quality

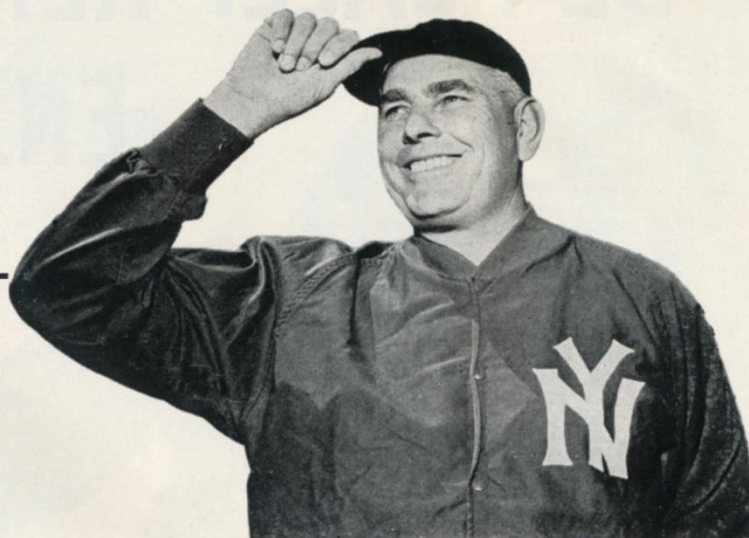


Products of *The American Tobacco Company*

"Tobacco IS OUR MIDDLE NAME"



# Salute to a Great Giant— Jim Lee Howell



JIM LEE HOWELL

WITH today's game, Jim Lee Howell steps down as Giant coach, at his own request.

We would be remiss on this occasion if we did not express our admiration of the smiling Senator from Arkansas and our appreciation to him for a great job well done. We know that the Giants of the front office, the coaching staff and the squad share these sentiments. We feel certain that so do Giant fans everywhere.

Since taking command of the Giants in 1954, when their fortunes were at their lowest ebb, Jim Lee has guided the team to a remarkable .667 record—53 victories, 26 defeats and four ties—in football's fastest company.

The Giants have not had a losing season under Howell and captured three divisional championships (1956-58-59) and one world championship (1956). They carry an unrivalled streak of six straight victories over the Browns into today's season-ending contest

with Cleveland, their arch-rival for Eastern leadership until the Eagles swooped off with the prize this year.

Jim Lee is the type of person who will shrug off this praise with an embarrassed grin. "I just blow up the footballs and keep order," he has said time and again after Giant victories. "The credit belongs to Allie Sherman (or Vince Lombardi, when he was here) . . . to Swede Svare (or Tom Landry when he was here) . . . to Ken Kavanagh . . . to Ed Kolman . . . to Walt Yowarsky . . . to the boys out on the field who got the job done."

This is no pose, no self-serving expression of false modesty. It isn't in Howell to dissemble, as those well know who have been acquainted with him since he first arrived on the Giant scene in 1937 as a gangling rookie end from Arkansas.

To Jim Lee, team considerations always outweigh individual interests and personal pride. As a

surprise choice to succeed Steve Owen seven years ago, he put this philosophy to practice as Giant head coach and built an organization unique for its togetherness. His record bears out the soundness of his thinking.

Whoever replaces Howell won't have an enviable job. However, the new Giant coach will have the comfort of Jim Lee's support and backing from the front office, where he will give his full attention to personnel problems with the same unselfish devotion he applied to the Giant cause as player, assistant and head coach.

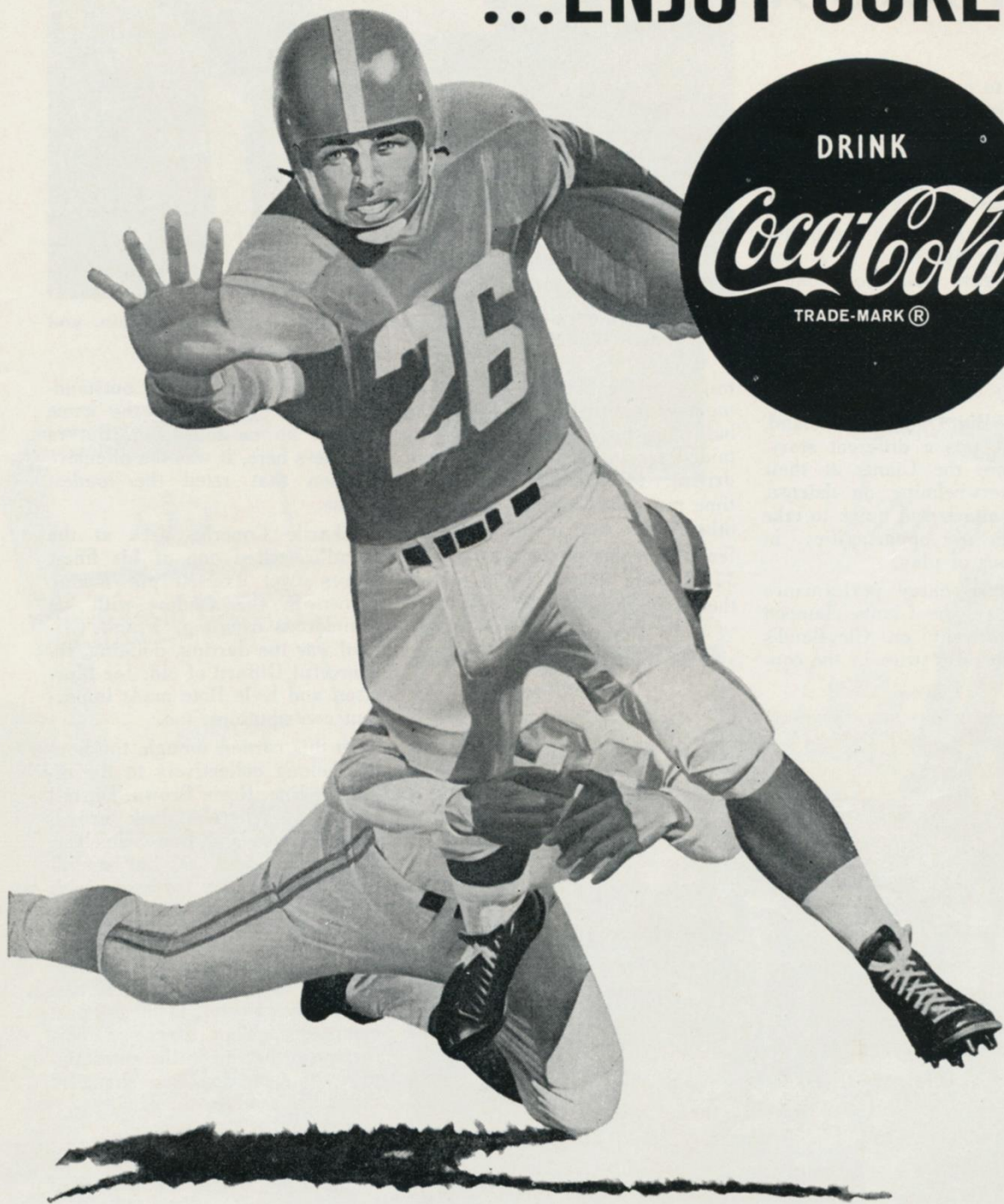
We're sorry to see this great Giant leave the role in which we came to know him best but also are mighty glad that he will remain a member of the Giant team.

As you know, this is the last rendezvous of 1960 at Yankee Stadium. . . . With Coach Howell joining in, all the Giants—and the Yankees, too—express their deepest gratitude for your loyal support and wish you a Merry Christmas and Happy New Year!

PLEASE USE ENTRANCE RAMP NEAREST YOUR SEAT

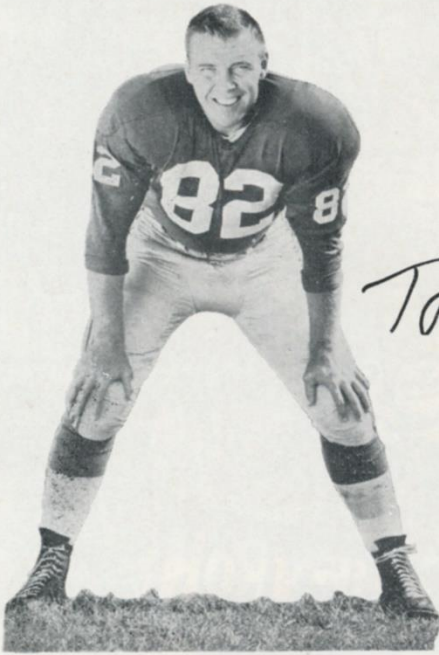


**BE REALLY REFRESHED!**  
**...ENJOY COKE!**





# Giant Gallery



*Tom Scott*

The Giants acquired **Tom Scott (82)** in a 1959 pre-season trade with the Eagles. A graduate of Virginia, where he also was an All-America in lacrosse, Scott is a rugged, knowing outside line-backer. A nephew of Lester Scott of Madison Square Garden's executive staff, Tom lives in Abington, Pa., with his wife, Joan, and their five youngsters.



*Proverb Jacobs*

The No. 2 draft choice of the Eagles in 1958, **Proverb Jacobs (73)**, was signed by the Giants as a free agent last spring. The 225-pound California graduate fits into the picture as a spare tackle. He is serviceable on both offense and defense. In a pinch, he also could handle the place-kicking assignment. He can really boom the ball.



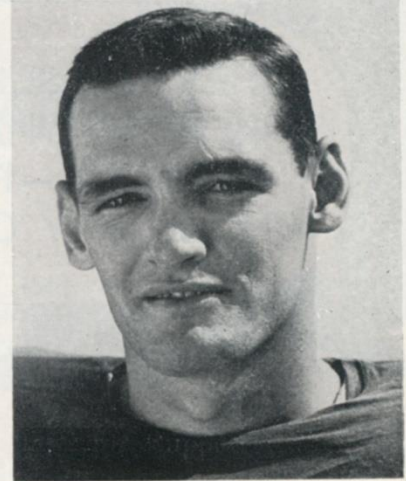
*Bob Schmidt*

**Bob Schmidt (52)** has been a reliable handyman on the Giant offensive line for three seasons. On frequent occasions, he has filled in at the tackles for Rosie Brown and Frank Youso. He also is the No. 1 replacement for Ray Wietecha at center. At Minnesota, Bob played both at tackle and end. He was drafted by the Cardinals in 1958.



*Bill Kimber*

Carried on the Giants' taxicab squad last year, blond **Bill Kimber (86)** was activated in midseason when injuries left the Giants short of ends. The rangy speedster from Florida State has been in the spotlight a couple of times, notably for his game-opening 41-yard reception against the Cowboys here two weeks ago.

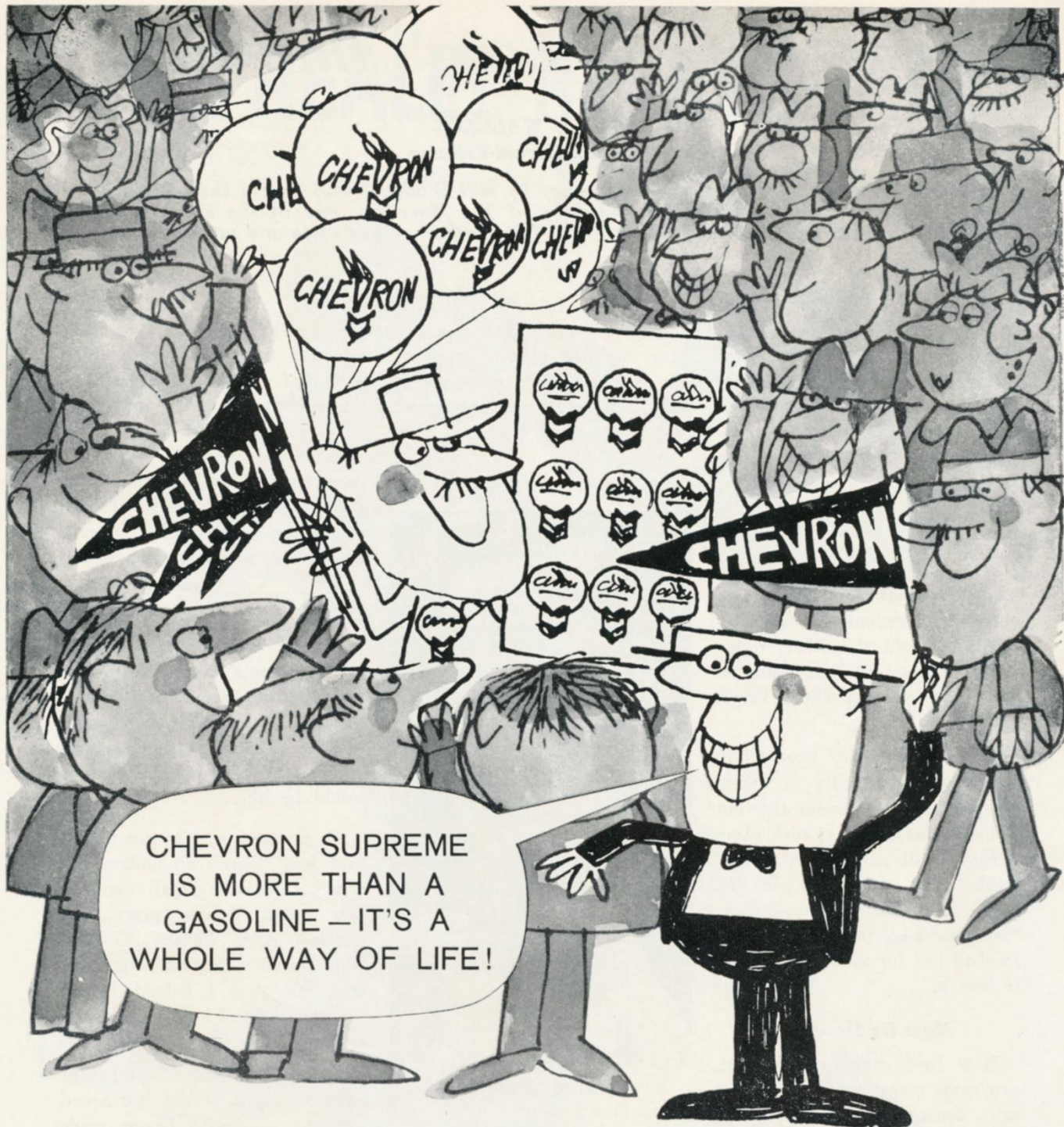


*Dick Lynch*

After one season with the Redskins, **Dick Lynch (22)** came to the Giants via a 1959 trade. He moved right into the defensive backfield, at right half, and has done a bang-up job. A Jerseyan, from Bound Brook, Dick won varsity fame at Notre Dame in 1957 by scoring the touchdown that ended Oklahoma's record 47-game winning streak.

PLEASE USE ENTRANCE RAMP NEAREST YOUR SEAT





You've gone too far this time, Hy Finn. Sure, Chevron Supreme fans are the most loyal anywhere. They're always bragging about the top-form performance Chevron Supreme gives 'em. They use their Chevron Credit Cards all the time, too. But really, Hy, there *are* other things in life. Like RPM Supreme, the motor oil that actually halts engine wear.

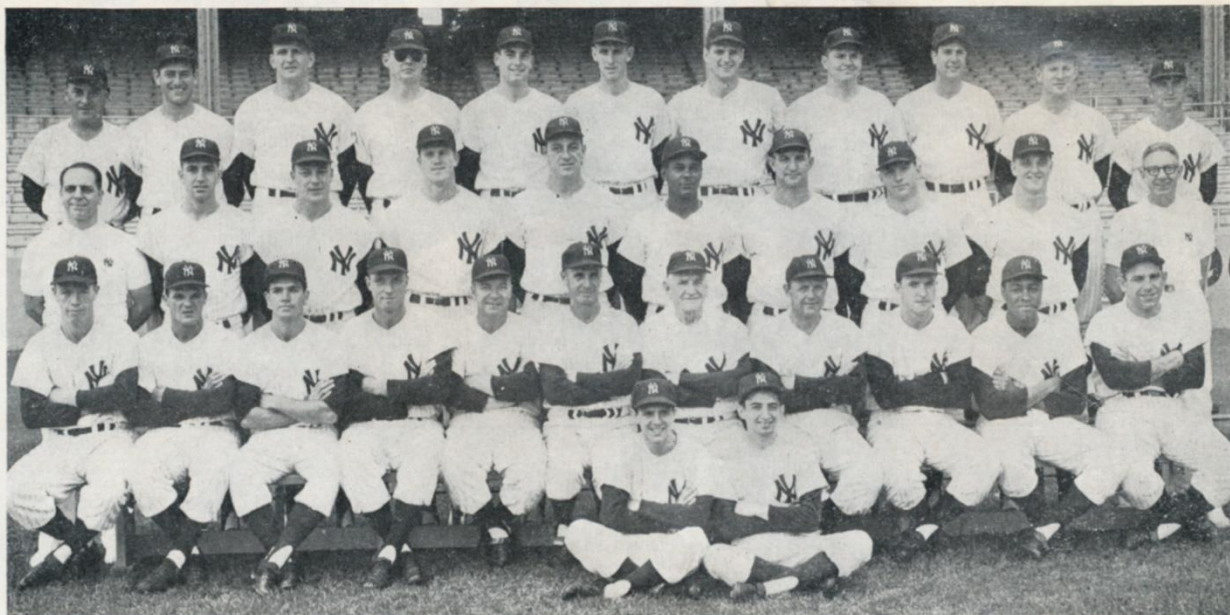


PRODUCTS OF  
CALIFORNIA  
OIL COMPANY



TM'S "RPM," "CHEVRON," "CHEVRON SUPREME," CHEVRON DESIGN®





*Rear row, left to right—Luis Arroyo, Duke Maas, Eli Grba, Ryne Duren, Bill Stafford, Jim Coates, Ralph Terry, Bob Turley, Art Ditmar, Whitey Ford, Bobby Shantz. Middle row—Joe Soares, Trainer; Cletis Boyer, Joe DeMaestri, Tony Kubek, Dale Long, Hector Lopez, Bob Cerv, Mickey Mantle, Roger Maris, Gus Mauch, Trainer. Front row—Gil McDougald, Bill Skowron, Bobby Richardson, Jim Hegan, Coach; Eddie Lopat, Coach; Frank Crosetti, Coach; Casey Stengel, Manager; Ralph Houk, Coach; Johnny Blanchard, Elston Howard, Yogi Berra. Seated in front—Frank Prudenti, Fred Bengis, Bat Boys.*

## Soon It Will Be "PLAY BALL" at



If the 1960 "down to the wire" pennant race is any indication, 1961 promises to be another great season; and to assure yourself of the best selection of seats for the BIG games, take advantage of the COMBINATION TICKET PLAN. This plan entitles you to the same choice seats for the crucial dates and the opportunity to obtain World Series tickets if the Yankees successfully defend their American League Championship.

## NEW YORK YANKEES

For further information phone CYpress 3-4300

or

Write — TICKET OFFICE, Yankee Stadium, Bronx 51, N. Y.

### NOVEL CHRISTMAS GIFT IDEA!

Looking for an unusual Christmas gift for the sports fans on your shopping list? Between halves today or right after the game, stop at the Advance Ticket Windows behind home plate and pick up Yankee Gift Tickets for 1961. Here's a gift that keeps on giving through the next baseball season. You can purchase any combination of box or reserved seats for one game or the Combination Plan for all Sundays, nights, holidays and the opener. Gift Tickets may be exchanged by the recipient for game tickets next season. Your personalized gift comes in an attractive gift folder. Stop at the ticket office here today for your Yankee Gift Tickets.





Your Dates at the Garden...

<p><b>Tonight 7 PM</b> <b>HOCKEY</b> — <b>RANGERS vs TORONTO</b></p>	<p><b>This Tuesday</b> <b>NBA Doubleheader</b> <b>KNICKS vs SYRACUSE</b> <b>BOSTON CELTICS</b> <b>vs CINCINNATI</b></p>	<p><b>This Wednesday</b> <b>HOCKEY</b> — <b>RANGERS vs CHICAGO</b></p>
<p><b>KEEP THIS HANDY CALENDAR OF HOLIDAY SPORTS EVENTS</b></p>		
<p><b>Christmas Night (Sunday)</b> <b>HOCKEY</b> — <b>RANGERS vs MONTREAL</b></p>	<p><b>Monday Night Dec. 26</b> <b>KNICKS vs LAKERS</b> — <b>GLOBETROTTERS</b> <b>vs GENERALS</b></p>	<p><b>Tuesday Dec. 27</b> <b>HOLIDAY BASKETBALL</b> <b>FESTIVAL</b>  AFT.: ST. JOHNS vs PROVIDENCE. ST. BONAVENTURE vs ST. JOSEPHS EVG.: UTAH vs PENNSYLVANIA OHIO STATE vs SETON HALL</p>
<p><b>Wed. Night Dec. 28</b> <b>HOCKEY</b> — <b>RANGERS vs DETROIT</b></p>	<p><b>Thurs. Dec. 29 Aft. &amp; Evg.</b> <b>HOLIDAY</b> <b>BASKETBALL</b> <b>FESTIVAL</b></p>	<p><b>Friday Night Dec. 30</b> <b>BASKETBALL</b> — <b>KNICKS vs</b> <b>BOSTON CELTICS</b></p>
<p><b>Sat. 6 PM — Dec. 31</b> <b>Tripleheader (Finals)</b> <b>HOLIDAY</b> <b>BASKETBALL</b> <b>FESTIVAL</b></p>	<p><b>NEW YEAR'S DAY (Sunday)</b> <b>HOCKEY</b> — <b>RANGERS vs TORONTO</b>  7 P.M.</p>	<p><b>TICKETS NOW ON SALE</b> <b>FOR ALL EVENTS</b> <b>AT</b> <b>GARDEN BOX OFFICE</b></p>



# They Lead the Giants



**GIANT COACHING STAFF:** *Back row, left to right:* Walt Yowarsky, head scout; Ed Kolman, line coach; Jim Lee Howell, head coach; Ken Kavanaugh, end coach; Harland Svare, defensive coach. *Front row:* Jimmy Patton, assistant defensive coach; Allie Sherman, offensive coach; Andy Robustelli, assistant defensive coach.

---

## Football Giants—1961 Season Subscription

*This season more Giant fans than ever before discovered the best way to solve their ticket problems was by season subscription. Many inquiries are now being received at the Giant office regarding subscription for 1961.*

*If you were a season subscriber this year, your same seats automatically are held in your name for 1961. Sometime in the spring you will receive a bill covering the seats which are registered in your name at the Giants office.*

*If you were not a subscriber in 1960 but wish to be one for 1961, we suggest you fill out and mail the blank appearing below.*

*Our 1961 Season Ticket Brochure will be ready in February and will include all necessary information, including the areas in which vacancies now exist.*

*If you prefer a personal visit, our Ticket Windows at 10 Columbus Circle will be open for that purpose as of February 1st.*

New York Football Giants, Inc.  
10 Columbus Circle  
New York 19, New York

Gentlemen:

Please send me your 1961 Season Ticket Brochure when it is ready for mailing:

Name .....

Address .....

City & Zone..... State.....

**This blank is for use of new applicants. 1960 Season reservations are automatically renewed.**

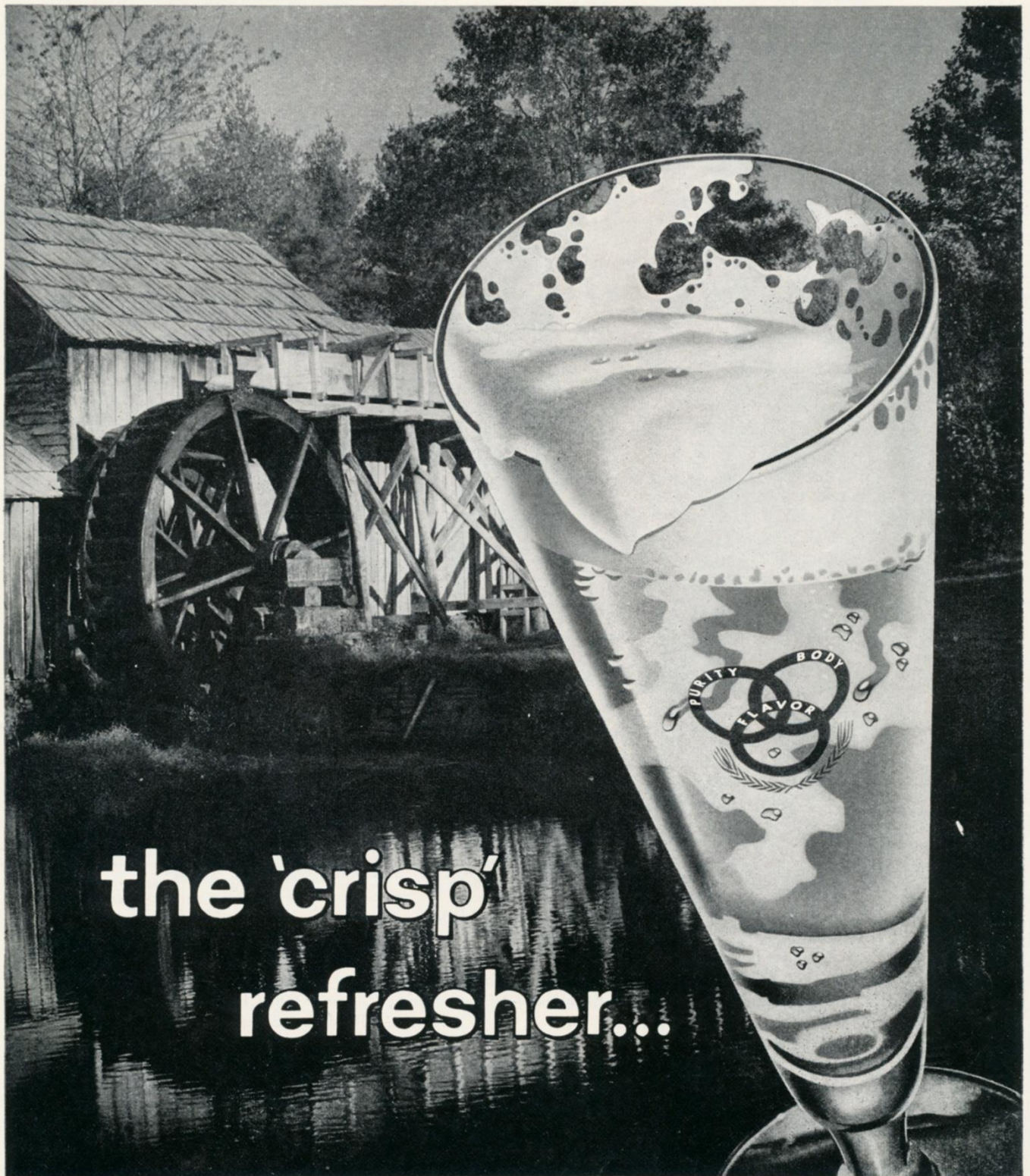
---

**SEASON TICKETS—YOUR BEST BUY IN ENTERTAINMENT**

---



# Ballantine LIGHT LAGER beer



the 'crisp'  
refresher...

® Is a Reg. T. M. of P. Ballantine & Sons, Newark, N. J.

the light beer with true lager flavor!

*No wonder Ballantine is the largest-selling beer in the East.*



# Jottings on the Giants

**L**AST Sunday's blinding blizzard kept three assigned newspapermen and assorted other Giant fans from being at fieldside for the snow-splashed game with the Redskins. With the weather still fair in New York, Bill Wallace of The Herald-Tribune, Gene Ward of the Daily News and Joe Sheehan of The New York Times boarded American Airlines Flight 365 from LaGuardia Airport at 10 A.M. At 1:30 P.M., Flight 365 touched down at LaGuardia. Between take-off and landing, Flight 365 circled Washington for an hour and a half and made two passes at landing in the Capital. Also aboard and headed for Griffith Stadium were Bill Shea, a pro football buff long before he became identified with the Continental League; Jack Kent Cooke, the owner of the Toronto Maple Leafs baseball team and their wives.

The more you think of it, Charlie Conerly's performance against the Redskins was amazing. Under conditions so miserable that two Washington passers failed to complete a pass, the old pro quarterback of the Giants managed to connect with his targets on six of eleven attempts, including the big one to Joe Morrison that accounted for the game-deciding touchdown. Hasty research reveals no other case of a no-hit passing game for a National League club, which gives Wash-

ington a distinction of a sort. Another record was set, in the 1:57 elapsed time of the contest.

The Coro Award jury, undoubtedly swayed by the unusual conditions, departed from the norm in picking its winners in the Washington game. The offensive prize went to Bill Stits, for his key fumble recovery, which set up the Giants' winning touchdown, and his daring punt returns. The defensive award was voted to Jim Leo, for his fumble recovery and, even more, for his booming tackles under punts and kick-offs. . . . The Coro Award winners for the Dallas game here were Kyle Rote, offense, and Sam Huff, defense. . . . Ed Sutton received the Van Heusen Pleasure-Wear Award as the top Giant performer over-all.

The chances are the Giants will play seven, instead of the usual six, home games next season. As you know, a fourteenth team, the Minneapolis-St. Paul Vikings, will join the National Football League in 1961. The new team will be manned by personnel selected from the thirteen existing clubs, each of whom will make available thirteen players from its thirty-eight man roster. In addition, the Vikings will get first choice on each of the twenty draft rounds scheduled for Dec. 27.

No one on the Giants could recall worse playing conditions than prevailed in Washington last Sun-

*(Continued on Page 29)*



## **HOTEL MANHATTAN**

### **HEADQUARTERS FOR PROFESSIONAL TEAMS IN NEW YORK CITY**

New York's newest . . . Hotel Manhattan offers 1400 air conditioned guest rooms, each with television and radio. Known as the "Home of Champions," this magnificent skyscraper hotel is ideally located in the heart of Times Square. Meet your friends at the Manhattan Bar or the new Playbill Restaurant for cocktails, luncheon, dinner and supper.

Express Subway Trains Speed You to  
Yankee Stadium from the Private  
Subway Entrance of Hotel Manhattan

**FRANK W. KRIDEL**

*Executive Vice President and General Manager*



**HOTEL**

*Manhattan*

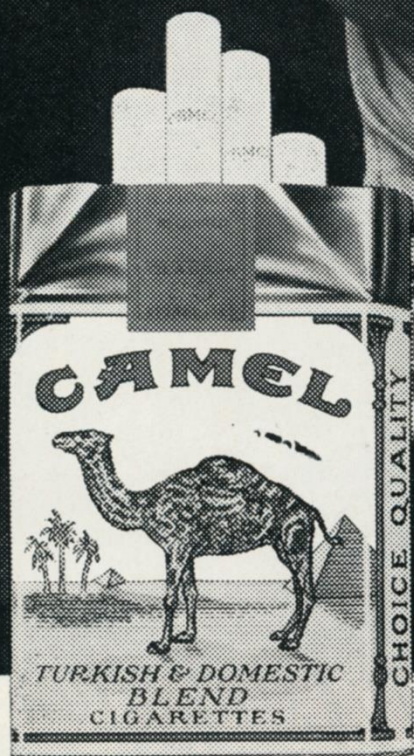
44TH TO 45TH STREETS  
AT EIGHTH AVENUE • JUDSON 2-0300





# Have a real cigarette—have a **CAMEL**

*Dick Nolan*  
PROFESSIONAL FOOTBALL STAR

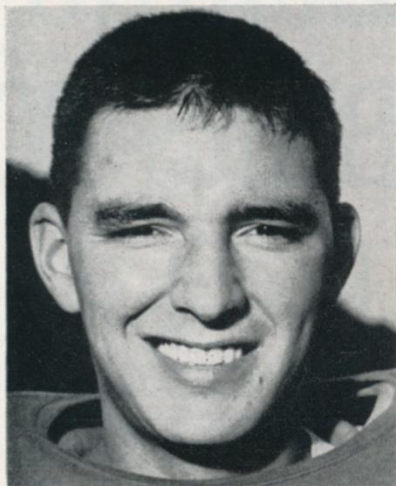


**The best tobacco makes the best smoke!**

R. J. Reynolds Tobacco Co., Winston-Salem, N. C.



# Giant Gallery



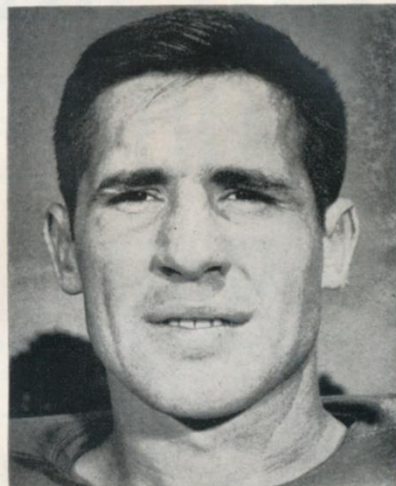
*Lee Grosscup*

Backing up Charlie Conerly and George Shaw at quarterback for the Giants is **Lee Grosscup (11)**. This young man from Utah is a rookie in name only. The Giants' No. 1 draft choice in 1959, he was on the "taxi squad" last year. A brilliant passer and clever ball-handler, he'll be heard from. As a collegian, he completed 20 passes vs. Army in 1957.



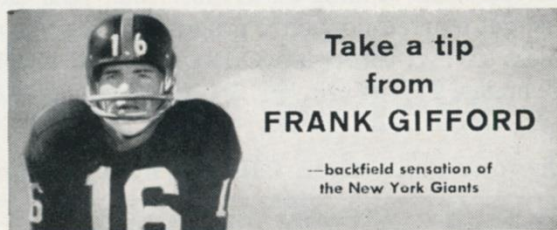
*Jim Leo*

**Jim Leo (30)**, a 1960 addition to the Giant roster, hails from Cincinnati, where he was a teammate of Joe Morrison for two years. The Giants' No. 3 draft selection, he distinguished himself against the Colts in the College All-Star game and is doing good work on the Giants' special units. He's also a capable end and linebacker.



*Bob Simms*

Rutgers has provided the Giants with an excellent rookie end in **Bob Simms (83)**. Blessed with size and speed, Bob can do a good job at either the "tight" or "loose" end. The Giants would not hesitate to use him on defense, either. As a member of the special unit that covers kicks, he has made some rib-rattling tackles. He's a man to watch.

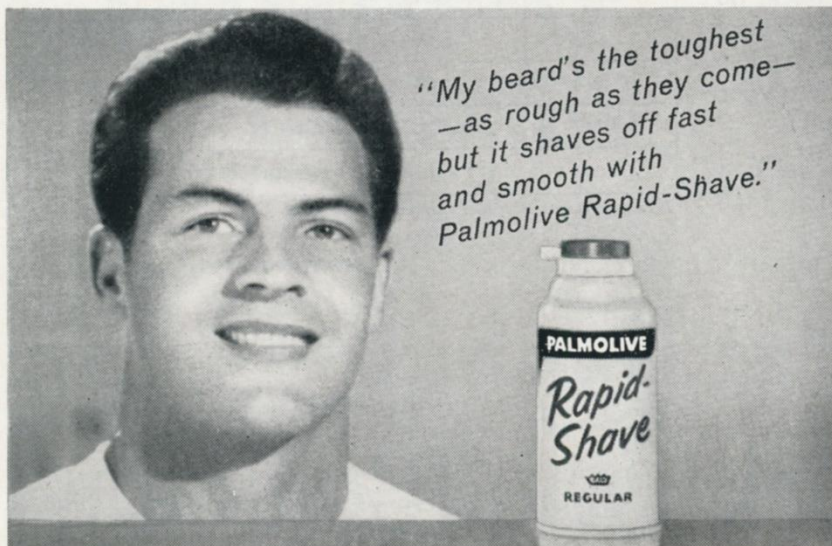


Take a tip  
from  
**FRANK GIFFORD**

—backfield sensation of  
the New York Giants

## Get Palmolive Rapid-Shave

**SUPER-MOISTURIZED FOR THE FASTEST, SMOOTHEST SHAVES POSSIBLE**



*"My beard's the toughest  
—as rough as they come—  
but it shaves off fast  
and smooth with  
Palmolive Rapid-Shave."*

**MAKE IT FAST AND MAKE IT SMOOTH—  
USE RAPID-SHAVE IN THE MORNING!**

**Super-Moisturized Lather  
Soaks Whiskers With 17  
Beard-Softening Ingredients**



Rich Rapid-Shave lather is super-moisturized with 17 separate beard-softening ingredients that start to work on contact.



Rapid-Shave sets you up for a fast shave... a smooth shave... a complete shave... a comfortable shave from start to finish.



Try  
Rapid-Shave  
Regular  
or  
Rapid-Shave  
Menthol





# NEW KIND OF CHECKING ACCOUNT REMEMBERS TO SAVE FOR YOU { *with interest on your savings too* }

## New CHECK'nSAVE account at Chemical New York gives complete checking service plus painless savings

If you're one of the people who want to save but always seem to put it off, here's good news for you.

Now you can hang on to part of every paycheck in spite of yourself. Just come in and open a CHECK'nSAVE account at Chemical New York. This new kind of account lets you write the checks you want, and saves for you automatically, as well. And, of course, you get interest on your savings compounded every three months.

**How it works.** Just tell us how much a month you want to save—from \$10 on up. Then, on the 5th or 18th of the month—whichever is best for you—we automatically tuck that amount away for you.

We take care of all the details. No paper work, no standing in line, no bookkeeping for you. Every month you get a notice of the money transferred to your savings account—and a statement on your checking account (either Regular or Special).

**CHECK'nSAVE at any of our 105 offices.** You can open your CHECK'nSAVE account in just 15

minutes at any of our 105 offices in Greater New York. Wherever you go, you'll get the friendly, neighborhood bank service you'd expect from "the New York Bank with the hometown touch."

So, if you want to hang on to more than your check stubs, get started now on a program of regular and painless saving, through a CHECK'nSAVE account at Chemical New York.

**Pick your goal—then CHECK'nSAVE for it.**

Your goal	Amount to set aside each month		
	1 year	2 years	3 years
\$200	\$16.67		
300	25.00	\$12.50	
500	41.67	20.83	\$13.89
1000	83.33	41.67	27.77
(Does not include interest compounded every quarter)			

*Member Federal Deposit Insurance Corporation*

**Chemical Bank**  
**New York Trust Company**  
*The New York Bank with the Hometown Touch*

105 Offices In  
Greater New York  
Founded 1824



# 1960 Giant Statistics

## ELEVEN-GAME TEAM RECORD

GIANTS	OPPONENTS
76 First downs, rushing .....	72
93 First downs, passing .....	77
12 First downs, penalty .....	13
181 Total first downs .....	162
3269 Total yards gained .....	2689
1289 Yards gained, rushing .....	1152
1980 Yards gained, passing .....	1537
374 Number of rushing attempts .....	379
284 Number of passing attempts .....	257
138 Passes completed .....	123
21 Passes intercepted by .....	18
39.0 Punting average .....	41.4
30 Punts returned .....	16
6.9 Punt return average .....	6.3
35 Kick-offs returned .....	40
20.7 Kick-Off return average .....	21.3
43 Penalties .....	52
393 Yards penalized .....	507
45 Fumbles .....	26
12 Opponents fumbles recovered .....	24

## INDIVIDUAL RECORDS

### PASSING

	Att.	Comp.	Int.	Yds.	L.G.	TDs.	Pct.
Shaw .....	152	76	13	1263	71	11	.500
Conerly .....	105	50	6	672	44	5	.476
Grosscup .....	19	9	0	118	26	1	.473
Gifford .....	6	3	1	24	13	0	.500
Morrison .....	1	0	1	0	0	0	.000
Summerall .....	1	0	0	0	0	0	.000

### SCORING

	TD-R	TD-P	TDs	PAT	FG	SFY	Pts.
Summerall .....	0	0	0	28-28	11-22	0	61
Rote .....	0	8	8	0	0	0	48
Gifford .....	4	3	7	0	0	0	42
Triplett .....	4	2	6	0	0	0	36
Morrison .....	2	3	5	0	0	0	30
Crow .....	1	0	1	0	0	0	6
Schnelker .....	0	1	1	0	0	0	6
Scott .....	1	0	1	0	0	0	6
Grier .....	0	0	0	0	0	1	2

### RUSHING

	Att.	Yds.	L.G.	Avg.
Triplett .....	117	501	33	4.3
Morrison .....	97	326	19	3.4
Gifford .....	77	232	15	3.0
Sutton .....	17	123	44	7.2
King .....	17	58	11	3.4
Webster .....	18	31	7	1.7
Chandler .....	1	24	24	24.0
Grosscup .....	2	7	5	3.5
Conerly .....	13	-1	17	0.0
Shaw .....	15	-12	15	0.0

### RECEIVING

	Att.	Yds.	TDs.	L.G.
Rote .....	38	670	8	71
Sch'ker .....	30	430	1	43
Gifford .....	24	344	3	44
Mor'son .....	26	339	3	51
Webster .....	6	88	0	27
Simms .....	1	58	0	58
Kimber .....	2	48	0	41
Triplett .....	5	48	2	24
Sutton .....	2	30	0	16
Sum'all .....	1	15	0	15
King .....	1	4	0	4
Dess .....	1	3	0	3

### INTERCEPTIONS

	No.	Yds.	L.G.
Patton .....	5	100	34
Lynch .....	2	45	32
Svare .....	1	37	37
Huff .....	2	33	17
Nolan .....	3	32	20
Scott .....	1	14	14
Crow .....	2	3	3
Riley .....	1	2	2
Livingston .....	1	0	0

### KICK-OFF RETURNS

	No.	Yds.	L.G.
Stits .....	16	389	39
Sutton .....	12	223	26
Riley .....	3	67	24
Triplett .....	1	20	20
King .....	1	18	18
Youso .....	1	7	7
Brown .....	1	0	0

### PUNTING

	No.	Avg.	Lg.-t.
Chandler .....	28	40.3	58
Conerly .....	18	36.9	59

### PUNT RETURNS

	No.	Yds.	L.G.
Stits .....	18	166	38
Riley .....	9	40	14
Crow .....	2	1	1
Patton .....	1	0	0

"He tried to take my

**Drake's**  
**COOKIES"**





## Giants on Offense

R. H. MORRISON (40)	F. B. TRIPLETT (33)	Q. B. CONERLY (42)	L. H. SUTTON (26)
R. E. SCHNELKER (85)	R. T. YOUSO (72)	R. G. STROUD (66)	C. WIETECH (55)
L. G. CORDILEONE (74)	L. T. BROWN (79)	L. E. ROTE (44)	

**KICK-OFF**  
**2:05 P.M.**

## Browns on Defense

L. E. WIGGIN (84)	L. T. GAIN (79)	M. L. B. COSTELLO (50)	R. T. PETERS (72)	R. E. MARSHALL (80)
L. W. PARRISH (30)	L. L. B. FISS (35)	L. S. FLEMING (46)	R. S. MOSTARDO (22)	R. W. SHOFNER (44)
R. L. B. MICHAELS (34)				

## NEW YORK GIANTS ROSTER

No.	Player	Position	Weight	Height	Age	College	Yrs. Pro
11	Grosscup, Lee	QB	185	6:01	23	Utah	1
15	Shaw, George	QB	180	6:00	27	Oregon	6
20	Patton, Jimmy	HB	180	5:10	28	Mississippi	6
21	Riley, Lee	HB	190	6:01	27	Detroit	5
22	Lynch, Dick	HB	200	6:01	24	Notre Dame	3
24	King, Phil	HB-FB	225	6:04	24	Vanderbilt	3
25	Nolan, Dick	HB	185	6:01	28	Maryland	7
26	Sutton, Ed	HB	207	6:01	25	North Carolina	4
29	Webster, Alex	HB	225	6:03	29	N. Carolina State	6
30	Leo, Jim	E-LB	215	6:01	22	Cincinnati	1
33	Triplett, Mel	FB	215	6:01	28	Toledo	6
34	Chandler, Don	HB	205	6:02	25	Florida	5
40	Morrison, Joe	FB-HB	194	6:01	22	Cincinnati	2
41	Crow, Lindon	HB	205	6:01	27	U. S. C.	6
42	Conerly, Charles	QB	185	6:01	39	Mississippi	13
44	Rote, Kyle	E	200	6:00	32	S. M. U.	10
48	Stits, Bill	HB	195	6:00	28	U. C. L. A.	8
52	Schmidt, Bob	C-T	245	6:04	24	Minnesota	3
55	Wietecha, Ray	C	225	6:01	31	Northwestern	8
60	Crawford, Bill	G	235	6:01	23	British Columbia	1
62	Dess, Darrell	G	235	6:00	25	N. Carolina State	3
66	Stroud, Jack	T-G	235	6:01	31	Tennessee	8
70	Huff, Sam	LB	230	6:01	25	West Virginia	5
72	Youso, Frank	T	260	6:04	24	Minnesota	3
73	Jacobs, Proverb	T	255	6:05	25	California	2
74	Cordileone, Lou	T-G	240	6:00	23	Clemson	1
76	Grier, Roosevelt	T	285	6:05	27	Penn State	5
77	Modzelewski, Dick	T	260	6:00	29	Maryland	8
78	Boll, Don	T	272	6:02	33	Nebraska	8
79	Brown, Roosevelt	T	245	6:03	27	Morgan State	8
81	Robustelli, Andy	E	230	6:01	32	Arnold	10
82	Scott, Tom	LB	220	6:02	30	Virginia	8
83	Simms, Bob	E	210	6:01	22	Rutgers	1
84	Svare, Harland	LB	215	6:00	29	Washington State	8
85	Schnelker, Bob	E	215	6:04	30	Bowling Green	8
86	Kimber, Bill	E	190	6:02	24	Florida State	2
88	Summerall, Pat	E	235	6:04	30	Arkansas	9
89	Livingston, Cliff	LB	215	6:03	30	U. C. L. A.	7

### GIANT SPECIALISTS

Punting—Chandler (34), Crow (41), PAT, FG and Kicks—Sutton (26), Chandler (34).  
Holding for PAT, FG—Conerly (42), Marshall (80).  
Kick Returns—Crow (41), Riley (21), Sutton (26).

### OFFICIALS

#### Referee

(23) Harry Brubaker, Loyola

#### Umpire

(17) James Biersdorf

#### Head Linesman

(36) Daniel Tehan, Xavier

#### Back Judge

(37) Cleo N. Diehl, North

#### Field Judge

(32) James Tunney, Occochee

### BROWN SPECIALISTS

Punting—Baker (38), PAT, FG and Kick-Offs—Brown (79), Holding for PAT, FG—Davies (16), Plum (16).  
Kick Returns—Mitchell (49),

PLEASE USE ENTRANCE RAMP NEAR

You deserve

# Calvert

...the whiskey with a "Standard"  
insured for one million



# KICK-OFF 2:05 P.M.

R. H.  
CLARKE (81)

F. B.  
BROWN (32)

Q. B.  
PLUM (16)

## Browns on Offense

L. H.  
MITCHELL (49)

R. E.  
NAGLER (86)

R. T.  
McCORMACK (74)

R. G.  
HICKERSON (66)

C.  
MORROW (56)

L. G.  
SMITH (64)

L. T.  
SCAFRATH (77)

L. E.  
KREITLING (88)

## Giants on Defense

L. E.  
SCOTT (82)

L. T.  
MODZELEWSKI (77)

M. L. B.  
HUFF (70)

R. T.  
GRIER (76)

R. E.  
ROBUSTELLI (81)

L. W.  
CROW (41)

L. L. B.  
LIVINGSTON (89)

L. S.  
RILEY (21)

R. S.  
PATTON (20)

R. L. B.  
SVARE (84)

R. W.  
LYNCH (22)

### ANT SPECIALISTS

Chandler (34), Conerly (42).  
Kicks-Offs—Summerall (88),  
Chandler (34).  
PAT, FG—Conerly (42).  
Crow (41), Stits (48),  
Sutton (26).

### OFFICIALS

#### Referee

Brubaker, Loyola (L. A.)

#### Umpire

James Biersdorfer

#### Head Linesman

Tehan, Xavier (Cinc.)

#### Back Judge

N. Diehl, Northwestern

#### Field Judge

James Tunney, Occidental

### OWN SPECIALISTS

Anting—Baker (38)  
and Kick-Offs—Baker (38)  
PAT, FG—Dawson (18),  
Plum (16)  
s—Mitchell (49), Shofner (44)

## CLEVELAND BROWNS ROSTER

No.	Player	Position	Weight	Height	Age	College	Yrs. Pro
16	Plum, Milt	QB	205	6:02	25	Penn State	4
18	Dawson, Len	QB	195	6:01	25	Purdue	4
20	Fichtner, Ross	HB	185	6:00	22	Purdue	1
22	Mostardo, Richard	QB	188	5:11	22	Kent State	1
24	Franklin, Bobby	HB	180	5:11	24	Mississippi	1
26	Renfro, Ray	HB	192	6:01	30	N. Tex. St.	9
30	Parrish, Bernie	HB	195	5:11	24	Florida	2
32	Brown, Jim	FB	228	6:03	24	Syracuse	4
34	Michaels, Walter	FB	237	6:00	31	Wash. & Lee	9
35	Fiss, Galen	FB	227	6:01	29	Kansas	5
36	Caleb, Jamie	HB	210	6:01	24	Grambling	1
38	Baker, Sam	FB	217	6:02	30	Oregon State	6
40	Gautt, Prentice	HB	195	6:00	22	Oklahoma	1
44	Shofner, Jim	HB	190	6:00	25	Texas Christian	3
46	Fleming, Don	HB	185	6:00	23	Florida U.	1
49	Mitchell, Bob	HB	188	6:00	25	Illinois	3
50	Costello, Vince	G	225	6:00	28	Ohio U.	2
52	Lloyd, Dave	C	248	6:03	23	Georgia	2
56	Morrow, John	C	240	6:03	27	Michigan	4
60	Wooten, John	G	248	6:02	24	Colorado	2
64	Smith, Jim Ray	G	245	6:03	28	Baylor	5
66	Hickerson, Gene	G	248	6:03	24	Mississippi	3
68	Stephens, Larry	T	248	6:04	22	Texas	1
70	Prestel, Jim	T	250	6:05	23	Idaho	1
54	Denton, Bob	T	240	6:04	26	Col. of Pac.	1
72	Peters, Floyd	T	250	6:04	24	San Fran. St.	2
74	McCormack, Mike	T	247	6:04	30	Kansas	8
77	Schafraath, Dick	T	245	6:03	23	Ohio State	2
78	Selawski, Gene	T	252	6:04	25	Purdue	2
79	Gain, Bob	T	260	6:03	31	Kentucky	8
80	Marshall, Jim	E	220	6:03	23	Ohio State	1
81	Clarke, Leon	E	234	6:04	26	U. & C.	4
82	Houston, Jim	E	230	6:02	23	Ohio State	1
83	Williams, A. D.	E	210	6:02	26	Col. of Pac.	2
84	Wiggin, Paul	E	240	6:03	26	Stanford	4
86	Nagler, Gern	E	190	6:02	28	Santa Clara	8
87	Murphy, Fred	E	205	6:03	22	Ga. Tech.	1
88	Kreitling, Rich	E	208	6:02	24	Illinois	2

ANCE RAMP NEAREST YOUR SEAT

# Reserve

"Standard of Excellence"

one million dollars!





*Now...as in the Good Old Days...*

**PARK & TILFORD IS YOUR ASSURANCE OF QUALITY!**



**CONEY ISLAND...1894** A view of the famous resort's main thoroughfare near the turn of the century. Note the exciting nickelodeon attraction "Corbett's Last Fight"...real "moving pictures" on Edison's Improved Kinetoscope.

**PARK & TILFORD...1840** When this picture was taken, Park & Tilford was already 54 years old, already famous for its fine whiskeys. Today's Park & Tilford is the finest in its history...*a century of quality in every bottle.*

# PARK & TILFORD

*Fine Whiskeys Since 1840*

RESERVE, the finest-tasting whiskey of its type  
PRIVATE STOCK, America's rich, rare luxury whiskey



PARK & TILFORD, N. Y. • RESERVE, 70% GRAIN NEUTRAL SPIRITS • PRIVATE STOCK, BLEND OF STRAIGHT WHISKEYS • ALL 86 PROOF.



# Looking Over the Browns

**I**N the last few years, the Cleveland Browns have had an almost complete turn-over in personnel. Gone are Otto Graham and Marion Motley, Dante Lavelli and Mac Speedie, Lou Groza and Don Colo and all the other striking originals of the great team that Paul Brown put together for Cleveland right after World War II.

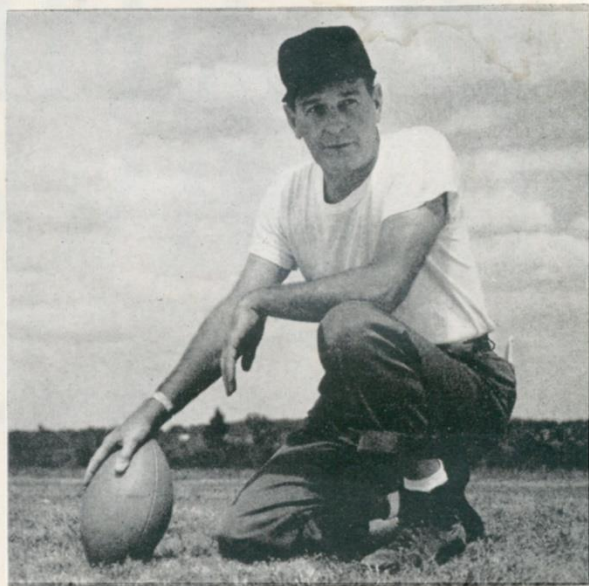
However, the Browns are so molded in the Paul Brown pattern that their distinct personality as a team has survived all changes. They still are marvelously precise in all their moves, solidly manned in all departments and in every way a model professional football team.

Cleveland's new personnel does not suffer a whit by comparison with the departed old Browns.

Their bulldozing Jimmy Brown has been the National League's unchallenged rushing leader for four years. Bobby Mitchell, his companion running back, is the most exciting and most dangerous ball-carrier on the pro circuit.

Milt Plum, at quarterback, is developing into a worthy successor to the mantle worn by Graham. Having his greatest season, the former Penn Stater is well on his way toward bagging the N. F. L. passing title. Among other things, Plum has a fantastic record of interception avoidance. Only one of his first 198 passes fell into enemy hands.

Cleveland has provided Plum with excellent receivers in Richie Kreitling, Gern Nagler, Leon Clarke, Fred Murphy and A. D. Williams. Len Dawson is a competent replacement for Plum. The rookies, Prentice Gautt and Jamie Caleb, have added running depth. Sam Baker, obtained from the Redskins, handles the punting and place-kicking chores.



**PAUL BROWN**

Mike McCormack, sound of knee again, leads a hard-blocking offensive line that has another player of all-star caliber in Jim Ray Smith. As always, the Browns have messenger guards — Gene Hickerson and Ray Wooten—who

deliver strategical advice from the bench before every play.

A tough-fibred defensive platoon, considerably rebuilt since last year, features Bob Gain up front; Galen Fiss, Vince Costello and Walt Michaels at the line-backing spots and Bernie Parrish and Jim Shofner at the corner posts.

Two fleet rookies—Don Fleming and Dick Mostardo—are used as safetymen and three other newcomers—Jim Houston, Jim Marshall and Jim Prestel—see a lot of action up front.

Significantly, thirty-two members of the thirty-eight man Brown squad have been in pro football five years or less. In other words, Cleveland has rebuilt almost completely. It's a tribute to Paul Brown that this was accomplished without any sharp drop in standard. Like the old Browns, the new Browns are a mighty football force.



**JIM BROWN**

EAST VS WEST  
**FOOTBALL**

THE GREATEST OF ALL THE  
BOWL GAMES

LOS ANGELES  
MEMORIAL

**COLISEUM**

**SUNDAY JAN. 15<sup>th</sup>**

11TH ANNUAL  
NATIONAL LEAGUE

**ALL-STAR**



**PRO BOWL**

**GAME**



# NOW...A FILTER MADE OF TOBACCO ITSELF!

Kentucky Kings  
with the  
all-tobacco filter  
for that  
all-tobacco taste

All  
Tobacco  
Filter

SMOOTHS THE SMOKE  
NATURALLY...  
yet never dulls  
the taste as  
artificial filters do



KING-SIZE  
POPULAR PRICE

A NEW KIND OF CIGARETTE! NEW KENTUCKY KINGS WITH THE ALL-TOBACCO FILTER MADE OF GOLDEN TOBACCO CUT FILTER-FINE

Now comes the best news smokers ever had. New Kentucky Kings has discovered the way to make a filter of tobacco itself. Yes, Kentucky Kings is a new kind of cigarette—the only cigarette with the all-tobacco filter for that all-tobacco taste. Filters the smoke naturally for that

all-tobacco taste—never dulls the flavor as artificial filters do. Improves smoking with smoothness you miss in every other all-tobacco cigarette. Enjoy new Kentucky Kings with the all-tobacco filter... the great idea... the great taste in smoking today.

TAKE IT  
FROM A  
TOBACCO  
EXPERT



KENTUCKY KINGS  
HAS A GREAT TASTE...  
RICH, MILD. AND  
EASY DRAW. YOU'VE  
NEVER SMOKED A  
CIGARETTE WITH SUCH  
SMOOTH FLAVOR!



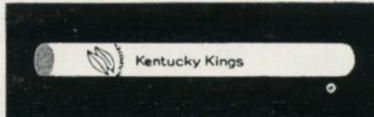
See how the all-tobacco filter is created from golden tobacco cut filter-fine.



Filter-fine tobacco is made into the all-tobacco filter by patented machines.



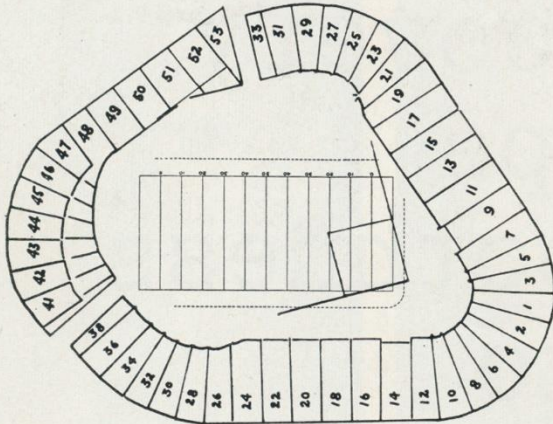
Kentucky Kings combines the all-tobacco filter with a luxury blend of tobaccos.



Only new Kentucky Kings with the all-tobacco filter smooths the smoke naturally, yet never dulls the taste as artificial filters do. Kentucky Kings—the all-tobacco filter for that all-tobacco taste.



# Yankee Stadium Services & Facilities



**LOST AND FOUND**—Direct inquiries and reports to James K. Thomson, the Stadium Manager. Any attendant will direct you to his office.

**REST ROOMS**—**Men:** Gate 2, Press Gate, Stadium Club (lower, upper), Gate 6; Lower Sections 34, 8, 6, 15, 21, 27; Mezzanine Sections 27, 15, 5, 18, 28; Upper Sections 34, 20, 6, 15, 21; Blyeacher Sections 43, 47, 52. **Women:** Gate 2, Gate 4, Stadium Club (lower, upper), Gate 6; Lower Sections 28, 20, 5, 15, 27; Mezzanine Sections 21, 15, 6, 18, 34; Upper Sections 28, 20, 5, 15, 29; Bleacher Sections 47, 52.

**PUBLIC TELEPHONES**—Gate 2, Gate 4, Press Gate, Stadium Club (lower, upper), Gate 6, Lower Sections 24, 14, 12, 11, 17, 27; Mezzanine Sections 27, 17, 7, 8, 22; South side 157th St., Ruppert Pl. to Cromwell Ave. Upper Sections 34, 20, 12, 8, 9, 19, 27; Bleacher Sections 41, 49, 51.

## PARKING AREAS YANKEE LOTS

South side 157th St., Ruppert Pl. to Cromwell Ave.  
Between Cromwell and River Aves., on 153rd St.  
163rd to 164th Sts., between River and Gerard Aves.  
151st St. and River Ave., opposite Bronx County jail.

## PRIVATELY-OWNED LOTS

West side Ruppert Pl., between 157th and 158th Sts.  
West side River Ave., between 151st and 153rd Sts.  
West side River Ave. and 157th St.  
East side River Ave., North of 153rd St.  
East side River Ave., North of 151st St.  
East side River Ave., 164th to 165th Sts.  
East side River Ave., South of 162nd St.  
Farmer's Square—Cromwell Ave. Roadway, and  
West of 151st St. Viaduct, opposite Bronx County Jail.  
East 168th St. and River Ave.

## GARAGES

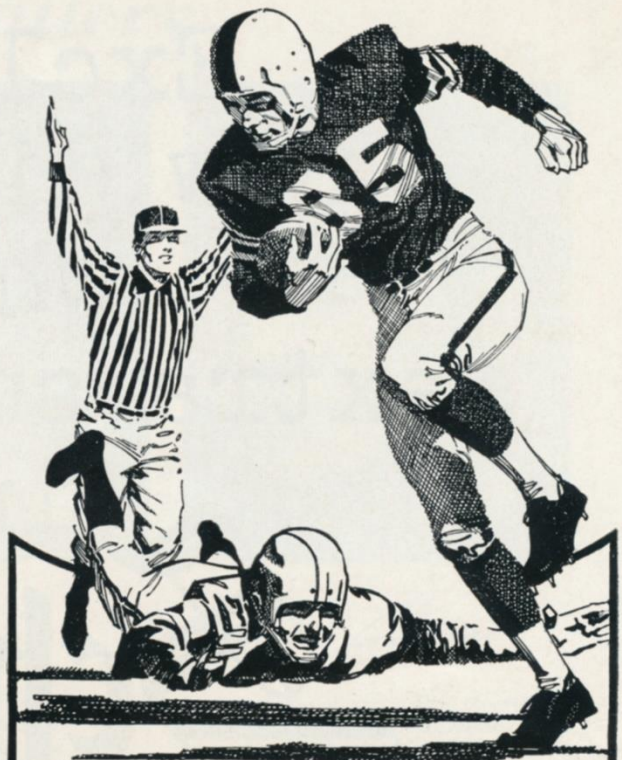
Cromwell Ave. and 157th St.  
East side of River Ave., South side of 158th St.  
East side of River Ave., North side of 157th St.  
East side of River Ave., South side of 157th St.  
North side of 158th St., between River and Gerard Aves.  
Also, the Polo Grounds lot again will be in service for all Giant games at the Stadium.

## SOUVENIR PRICE LIST

Rooter Badge (All Teams) .....	.25	Plastic Cushion .....	1.00
Picture Set (36 Players).....	.50	Stadium Cap (ear laps).....	2.00
Team Pennants (large) .....	.75	Knitted Hat .....	1.50
Pen and Pencil Set .....	.75	Football (small) .....	1.50
Player Doll (small) .....	.75	Football (large) .....	3.00
Giants Player Trophy .....	1.00		

Souvenir Stands located at Gates 2, 4, 6; Lower Sections 7, 14; Mezzanine Section 10; Bleacher Sections 43, 50.

These items also are available by mail from Harry M. Stevens, Inc., Souvenir Department, Yankee Stadium, Bronx 51, N. Y.



All 13 National League  
Professional football teams  
chose **UNITED AIR LINES**  
for team travel this year.



The big reason more athletic  
organizations chose **UNITED**  
is the *extra care* **UNITED**  
takes with every detail of  
their trips...from the  
planning to the personal,  
attentive, dependable service.

For reservations on United Jet  
Mainliners call your Travel Agent or  
United Air Lines.



THE EXTRA CARE LINE



Exclusive  
new discovery  
whips  
extra smoothness  
into

**Schenley**  
WHISKY



**AFTER THE GAME...TASTE THE DIFFERENCE**  
Schenley Distillers Co., N.Y.C. • Blended Whisky, 86 Proof, 65% Grain Neutral Spirits.



# Giant Gallery



*Ed Sutton*

Shortly after the season started, the Giants had the chance to pick up **Ed Sutton (26)** from the Redskins. They grabbed it, being well aware of Ed's talents from having seen him play against the Giants six times in his three seasons with Washington, where he was regular left halfback on offense. Sutton, a 207-pounder from North Carolina, is a powerful runner.



*Mel Triplett*

Giant fans know **Mel Triplett (33)** as a thunderous runner, particularly devastating on quick pops off tackle and delayed draw bucks. The Giant coaches will tell you Mel's even more valuable as a blocker and passer protector. A graduate of Toledo, Mel is in his sixth year with the Giants. He's the club's champion family man, the father of eight children.



*Don Boll*

**Don Boll (78)** is an 8-year pro who knows all the angles about blocking from the tackle slot. What's more, he has the heft—272 pounds—to implement his knowledge. The Giants acquired the former Nebraska Cornhusker from the Redskins in an early-season deal. He supplies valued support for Rosie Brown and Frank Youso on the offensive line.

## Enjoy em at the Game and at Home

Here at the Yankee Stadium, reach for **MRS. WAGNER'S** delicious individual pies. At home, enjoy the fresh-baked goodness of **MRS. WAGNER'S** family-size pies. Both ways, you're in for real enjoyment.



## Why bake when you can buy

*Mrs. Wagner's Pies*



# League Leaders!

The Top Bourbon ... Like the Top  
Football Team ... has Quality!

## J.W. DANT WORLD'S LARGEST SELLING BONDED BOURBON



Take your choice of the two Kentucky favorites—Dant 100 Proof Bottled in Bond or J. W. Dant 86 Proof ... its mild, light, lower-priced partner.

### NATIONAL LEAGUE LEADERS

Rushing	Brown, Cleveland, 201-1147 yds.
Passing	Plum, Cleveland, 132 of 210-2001 yds.
Receiving	Berry, Baltimore, 72-1278 yds.
Scoring	Hornung, Green Bay, 165 pts.
Punting	Norton, St. Louis, 45.6 avg.
Punt returns	Woodson, San Francisco, 13-174 yds.
Kick-Off Returns	Woodson, San Francisco, 17-498 yds.
Interceptions	Norton, St. Louis, 10-96 yds.



FOUNDER MEMBER



# Giant Blackboard: Motion Series

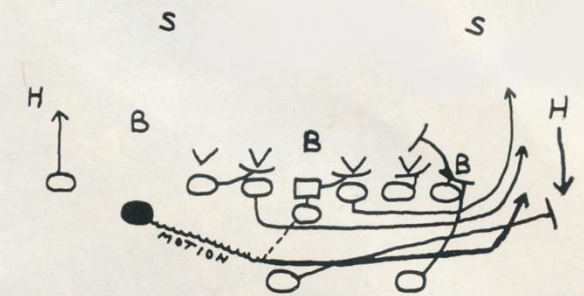
IN the last few weeks, the Giants have added to their offensive repertoire a highly-effective man-in-motion series. With Ed Sutton and Joe Morrison carrying, the basic play of the series, which is diagrammed here, netted some spectacular gains in the second game with the Eagles and against the Dallas Cowboys.

Modern football is filled with fakes and fripperies but when all is said and done, there still is no better way of moving the ball than knocking down your opponents and trampling on them.

The diagrammed play is designed to accomplish that objective. Note the power massed ahead of the ball. When the in-motion carrier, who starts from a slot position inside the split left end, takes the backward flip from the quarterback and heads around end, he is convoyed by both guards, the fullback and the right halfback.

The success of the play depends on crisp, decisive blocking. The left tackle and center have difficult fill-in assignments to plug the holes left by pulling guards. The right tackle and right end fire straight out against the defenders playing them head to head. The right halfback joins the right end in a double-team block on the left outside line-backer. This clamp is applied for just a moment, then the end releases in an attempt to pick off the middle line-backer.

Swift elimination of the upcoming defensive left



wing by the fullback is vitally important so the ball-carrier can get headed downfield fast. The guards hit the first targets that present themselves and the rest of the linemen hustle downfield to help out after fulfilling their primary missions.

There isn't a great deal of deception to this play, so provision has to be made for extreme defensive reaction when the slotback goes in motion. As you may have noticed against Dallas, Allie Sherman, the Giant offensive coach, was prepared for this contingency.

As checks off the basic man-in-motion power sweep, the Giants ran counters back to the weak side, with the fullback or right halfback carrying. They also had the quarterback roll out against the flow of the play pattern and pass. These variations, rounding out a complete play cycle, are designed to keep the defense honest.

## EVERYBODY GETS A KICK OUT OF THESE WONDERFUL GIFTS— WATCHBANDS

By *Forstner*®

**EXCLUSIVE CREATIONS THAT LEND  
NEW BEAUTY TO EVERY WATCH!**

Most admired because these ultra-thin, luxurious looking watch bracelets are so distinctively designed, so finely made. Smooth, cool, comfortable, completely flexible, instantly adjustable to wrist size. See a variety of KOMFIT and AMERICANA styles at better jewelers everywhere.

*Forstner*  
JEWELRY'S NAME FOR QUALITY

**FORSTNER, INC., Irvington, N. J.**



the unique  
**KOMFIT® "Grand"**

12Kt. Gold Filled with  
Stainless Steel lining  
\$15.40 (plus Fed. Tax).  
All Stainless Steel \$8.95  
(no tax)



the exquisite  
**AMERICANA**

New gleaming 12Kt. Gold  
Filled mesh style \$8.00 (plus  
Fed. Tax).  
Square Snake Chain styles  
from \$7.50.

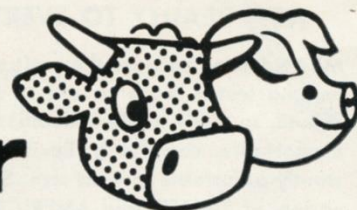




# "THESE FRANKFURTS ARE HICKORY SMOKED!"

Enjoy 'em at home, the circus, the football field, *everywhere!*  
Take your choice—regular or all-beef franks—both are *all meat!* Both deliciously hickory-smoked! Available in jars and cellophane, too. By famous...

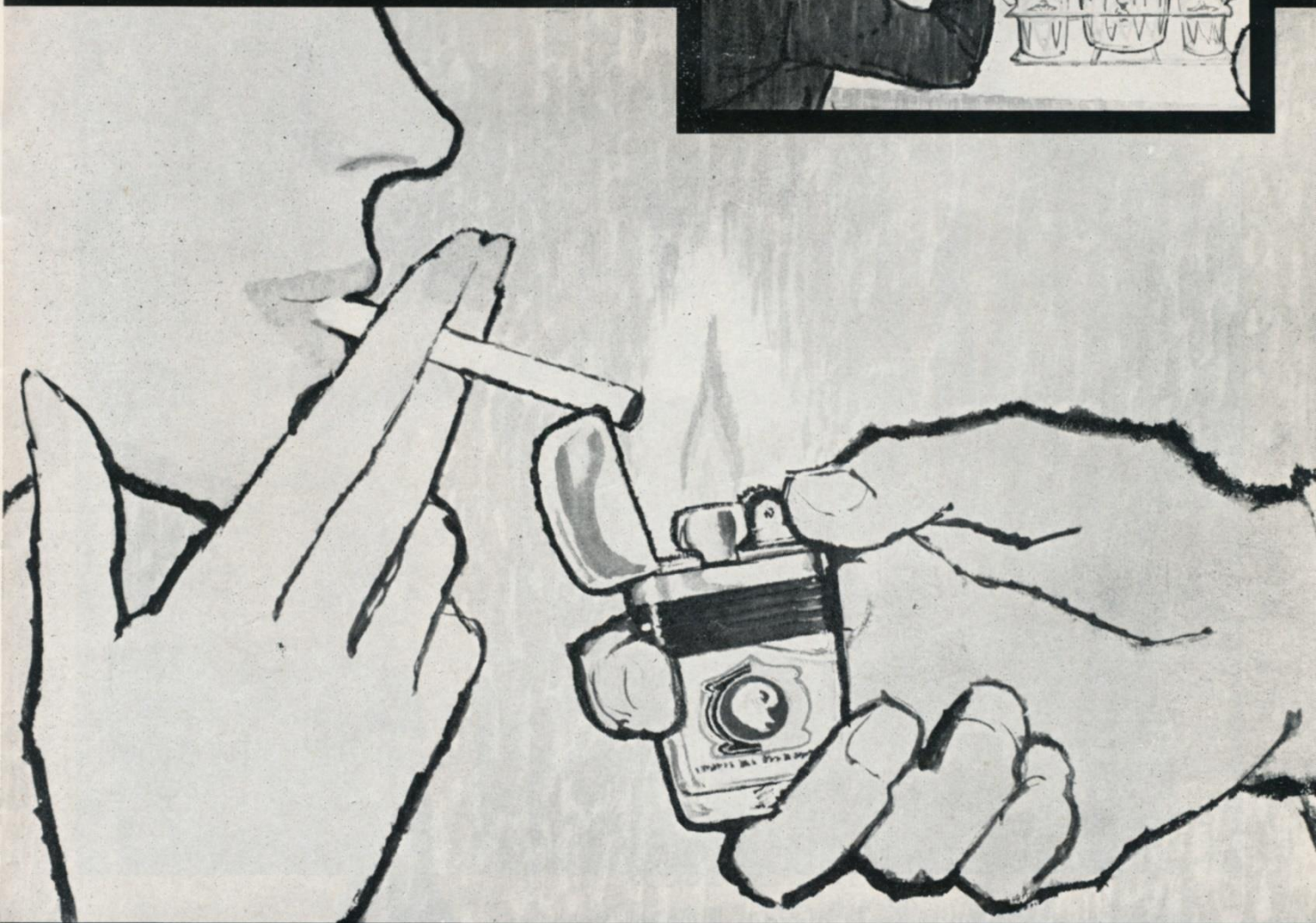
## Stahl-Meyer



FAMOUS FERRIS HICKORY SMOKED CANNED HAM AND FERRIS BACON ARE TWO MORE FINE PRODUCTS MANUFACTURED AND KITCHEN TESTED BY STAHL-MEYER INC.



# Fluid fashions – beautifully designed with your pro team emblem



On the lighter side, there's the exclusive Scripto Wind-guard VU-lighter. Your favorite team insignia floats free in the unique see-through fuel reservoir that *lets you know when the fuel is low*. It's filled, ready to light. Contains extra flint and is unconditionally guaranteed, \$3.95 including federal tax.

Sparkling glassware by Weico is decorated in gold

and team color, beautifully designed around your team insignia and name. Your choice of 8 or 13 piece sets of glasses with one or all 13 team emblems, in five different sizes, \$3.50 to \$9.50. Eleven piece ice bucket caddy set, \$10. Eight piece martini set, \$6. Chip & Dip set, \$7. Coaster-ash tray sets, \$2.50 and \$3.50. Twelve cup carafe with candle warmer, \$6.

**OFFICIAL NFL TEAM MERCHANDISE IS FEATURED IN YOUR CITY AT:**

**Abraham & Straus, 422 Fulton St., Brooklyn**

**Arnold Constable Corp. 435 Fifth Avenue**

And other leading department stores, men's and boys' shops and sporting goods stores.

Scripto lighters available also at your drug stores, tobacco stands and newsstands.



# RUPPERT PEOPLE

*have a thirst for living!*



A *thirst* for living means a *taste* for Ruppert! Ruppert is the light lively beer for people who live livelier lives. Four generations of the Ruppert family have seen to it *personally* that Ruppert has the finest flavor your money can buy. So live a little! Open up a Ruppert and swallow deep.

*Have a Ruppert! Brewed since 1867 by four generations of the Ruppert family!*



*Bright  
new  
label...  
same  
fine  
Ruppert!*

© 1960, JACOB RUPPERT, NEW YORK CITY



## Series Review:

### GIANTS vs. BROWNS

THE Giants carry a string of six straight victories over the Browns into this twenty-fourth meeting with their keen rivals from Cleveland.

On top of beating the Browns 10-6 and 48-7 last year en route to the Eastern championship, the Giants scored a 17-13 triumph at Cleveland in the first game of this season's home-and-home series.

Although the series between the Giants and Browns date back only to 1950, when Cleveland was admitted to the National League after the dissolution of the All-America Conference, it rates as one of pro football's classic rivalries.

The complete series record:

1950—Giants 6; Browns 0	1955—Browns 24; Giants 14
Giants 17; Browns 13	Browns 35; Giants 35
*Browns 8; iants 3	
1951—Browns 14; Giants 13	1956—Giants 21; Browns 9
Browns 10; Giants 0	Browns 24; Giants 7
1952—Giants 17; Browns 9	1957—Browns 6; Giants 3
Giants 37; Browns 34	Browns 34; Giants 28
1953—Browns 7; Giants 0	1958—Giants 21; Browns 17
Browns 62; Giants 14	Giants 13; Browns 10
1954—Browns 24; Giants 14	*Giants 10, Browns 0
Browns 16; Giants 7	1959—Giants 10, Browns 6
1960—Giants 17, Browns 13	Giants 48, Browns 7

\* Conference Playoff.

### GIANTS vs. ALL OPPONENTS

Opponent	W.	L.	T.	Pts.	Opp. Pts.
Baltimore Colts .....	2	3	0	88	102
Chicago Bears .....	14	20	2	451	554
Cleveland Browns .....	11	11	1	355	382
Dallas Cowboys .....	1	1	0	31	31
Detroit Lions .....	5	8	1	177	285
Green Bay Packers .....	15	14	2	425	396
Los Angeles Rams .....	3	7	0	208	224
Philadelphia Eagles .....	33	20	1	1011	838
Pittsburgh Steelers .....	29	19	2	899	699
St. Louis Cardinals .....	29	9	0	890	594
San Francisco 49ers .....	3	1	0	99	81
Washington Redskins .....	31	17	2	1003	778

### Giant Jottings

(Continued from Page 11)

day. There was something to be thankful for, at that. The weather might have been as bad as it was here early last Monday. Because of the record local pre-winter snow, the Giants will tackle the Browns without benefit of field practice. At this late stage of the season, when the bumps, bruises, wrenches, twists and strains accumulated in six exhibitions and eleven league games weigh heavily, that could be a blessing. One thing is sure. No Giant team ever will face the Browns better briefed. The boys have ben sitting in on double and triple-feature movies every day. The subject, of course, has been Giants vs. Browns, a series that has more thrills than the Perils of Pauline.

## SEASON AFTER SEASON . . .



"Ahh . . .  
So Pure!"

She's New York's  
Best Girl!

**White Rock**  
for sparkling fine beverages

The White Rock Girl stays so popular because the brand she represents satisfies so completely! Thanks to *Superior carbonation*, a White Rock drink keeps sparkling from the first pour to the last sip. So for a lighter-livelier drink every time, don't just mix it . . . *White Rock it!*





# **Spectating is more sparkling ...with Canada Dry Ginger Ale...**

**So is socializing after the game  
with Canada Dry Ginger Ale  
in your tall drinks.**





# NATIONAL LEAGUE OFFICIALS' SIGNALS



Offside



Crawling, Pushing,  
Helping Runner



Illegal Motion



Illegal Pass



Unsportsmanlike  
Conduct



Pass Interference



Holding, Illegal  
Use of Hands



Personal Foul  
(indication of  
offense follows)



Delay of Game,  
Excess Time-Out



Touchdown, Field  
Goal, Extra Point



Safety



Loss of Down



Penalty Declined,  
Incomplete Pass,  
Missed Goal



First Down



Dead Ball



No Time-Out or  
Time In with Whistle



Time-Out

Enjoy  
**MELROSE**  
Whiskey Born Great!



## "A Toast to Greatness"

There's royal pleasure for you in Melrose . . . an incredibly smooth blend selected from our treasured reserves. Rich and mellow—yet light and appealing. Tonight, make yours MELROSE—the toast to greatness.



SUPERLATIVE BLENDED WHISKEY, 86 PROOF, 65% GRAIN NEUTRAL SPIRITS, MELROSE DISTILLERS CO., NEW YORK, N. Y.



# NFL Pairings and Results

Home Team		Visiting Team		Home Team		Visiting Team			
NEW YORK		vs.	CLEVELAND	LOS ANGELES		vs.	GREEN BAY		
Won 6, Lost 3, Tied 2			Won 7, Lost 3, Tied 1	Won 4, Lost 6, Tied 1			Won 7, Lost 4		
21—@ San Francisco .....	19		41—@ Philadelphia .....	24	21—St. Louis .....	43	14—Chicago .....	17	
35—@ St. Louis .....	14		28—Pittsburgh .....	20	9—@ San Francisco .....	13	28—Detroit .....	9	
19—@ Pittsburgh .....	17		48—@ Dallas .....	7	27—@ Chicago .....	34	35—Baltimore .....	21	
24—Washington .....	24		29—Philadelphia .....	31	17—@ Baltimore .....	31	41—San Fran. @ Mil. ....	14	
13—St. Louis .....	20		31—@ Washington .....	10	24—Chicago .....	24	19—@ Pittsburgh .....	13	
17—@ Cleveland .....	13		13—New York .....	17	48—Detroit .....	35	24—@ Baltimore .....	38	
27—Pittsburgh .....	24		28—St. Louis .....	27	38—@ Dallas .....	13	41—Dallas .....	7	
10—Philadelphia .....	17		10—@ Pittsburgh .....	14	10—@ Detroit .....	12	31—Los Angeles @ Mil. ....	33	
23—@ Philadelphia .....	31		17—@ St. Louis .....	17	33—Green Bay @ Mil. ....	31	10—@ Detroit .....	23	
31—Dallas .....	31		27—Washington .....	16	7—San Francisco .....	23	41—@ Chicago .....	13	
17—@ Washington .....	3		42—Chicago .....	0	10—Baltimore .....	3	13—@ San Francisco .....	0	
—Cleveland .....			—@ New York .....		—Green Bay .....		—@ Los Angeles .....		
237		213	314	183	244		262	297	188

SAN FRANCISCO		vs.	BALTIMORE	WASHINGTON		vs.	PHILADELPHIA		
Won 6, Lost 5			Won 6, Lost 5	Won 1, Lost 8, Tied 2			Won 9, Lost 2		
19—New York .....	21		20—Washington .....	0	0—@ Baltimore .....	20	24—Cleveland .....	41	
13—Los Angeles .....	9		42—Chicago .....	7	26—Dallas .....	14	27—@ Dallas .....	25	
14—@ Detroit .....	10		21—@ Green Bay .....	35	24—@ New York .....	24	31—St. Louis .....	27	
10—@ Chicago .....	27		31—Los Angeles .....	17	27—Pittsburgh .....	27	28—Detroit .....	10	
14—Green Bay @ Mil. ....	41		17—@ Detroit .....	30	10—Cleveland .....	31	31—@ Cleveland .....	29	
25—Chicago .....	24		45—@ Dallas .....	7	7—@ St. Louis .....	44	34—Pittsburgh .....	7	
0—Detroit .....	24		38—Green Bay .....	24	13—@ Philadelphia .....	19	19—Washington .....	13	
26—@ Dallas .....	14		24—@ Chicago .....	20	14—St. Louis .....	26	17—@ New York .....	10	
30—@ Baltimore .....	22		22—San Francisco .....	30	10—@ Pittsburgh .....	22	31—New York .....	23	
23—@ Los Angeles .....	7		15—Detroit .....	20	16—@ Cleveland .....	27	—@ Washington .....		
0—Green Bay .....	13		3—@ Los Angeles .....	10	3—New York .....	17	20—@ St. Louis .....	6	
—Baltimore .....			—@ San Francisco .....		—Philadelphia .....		21—@ Pittsburgh .....	27	
174		195	278	200	150		271	283	218

DETROIT		vs.	CHICAGO	ST. LOUIS		vs.	PITTSBURGH		
Won 6, Lost 5			Won 5, Lost 5, Tied 1	Won 5, Lost 5, Tied 1			Won 5, Lost 5, Tied 1		
9—@ Green Bay .....	28		17—@ Green Bay .....	14	43—@ Los Angeles .....	21	35—@ Dallas .....	28	
10—San Francisco .....	14		7—@ Baltimore .....	42	14—New York .....	35	20—@ Cleveland .....	28	
10—@ Philadelphia .....	28		34—Los Angeles .....	27	27—@ Philadelphia .....	31	17—New York .....	19	
30—Baltimore .....	17		27—San Francisco .....	10	14—@ Pittsburgh .....	27	27—St. Louis .....	14	
35—@ Los Angeles .....	48		24—@ Los Angeles .....	24	12—Dallas .....	10	27—@ Washington .....	27	
24—@ San Francisco .....	0		7—@ San Francisco .....	25	20—@ New York .....	13	13—Green Bay .....	19	
12—Los Angeles .....	10		20—Baltimore .....	24	44—Washington .....	7	7—@ Philadelphia .....	34	
7—@ Chicago .....	28		28—Detroit .....	7	27—@ Cleveland .....	28	24—@ New York .....	27	
23—Green Bay .....	10		17—Dallas .....	7	26—@ Washington .....	14	14—Cleveland .....	10	
20—@ Baltimore .....	15		13—Green Bay .....	41	17—Cleveland .....	17	22—Washington .....	10	
23—Dallas .....	14		0—@ Cleveland .....	42	6—Philadelphia .....	20	27—Philadelphia .....	21	
—Chicago .....			—@ Detroit .....		—Pittsburgh .....		—@ St. Louis .....		
203		212	194	263	250		223	233	237

## NATIONAL LEAGUE LEADERS

### RUSHING

1. Brown, Cleveland .....	201 for 1147 yds.
2. Taylor, Green Bay .....	213 for 1059 yds.
3. Crow, St. Louis .....	159 for 868 yds.

### PASSING

1. Plum, Cleveland .....	132 of 210 for 2001 yds.
2. Unitas, Baltimore .....	178 of 342 for 2939 yds.
3. VanBrocklin, Phila. ....	145 of 269 for 2281 yds.

### RECEIVING

1. Berry, Baltimore .....	72 for 1278 yds.
2. Randle, St. Louis .....	57 for 778 yds.
3. Gibbons, Detroit .....	50 for 595 yds.

### SCORING

1. Hornung, Green Bay .....	165 pts.
2. Walston, Philadelphia .....	97 pts.
3. Moore, Baltimore .....	78 pts.

## NATIONAL LEAGUE STANDINGS

### EASTERN CONFERENCE

	W.	L.	T.	Pct.	For	Agst.
*Philadelphia .....	9	2	0	.818	283	218
Cleveland .....	7	3	1	.700	314	183
NEW YORK .....	6	3	2	.667	237	213
Pittsburgh .....	5	5	1	.500	233	237
St. Louis .....	5	5	1	.500	250	223
Washington .....	1	8	2	.111	150	271

### WESTERN CONFERENCE

Green Bay .....	7	4	0	.636	297	188
Baltimore .....	6	5	0	.545	278	200
Detroit .....	6	5	0	.545	203	212
San Francisco .....	6	5	0	.545	174	195
Chicago .....	5	5	1	.500	194	263
Los Angeles .....	4	6	1	.400	244	262
Dallas .....	0	11	1	.000	177	369

\* Clinched conference title.

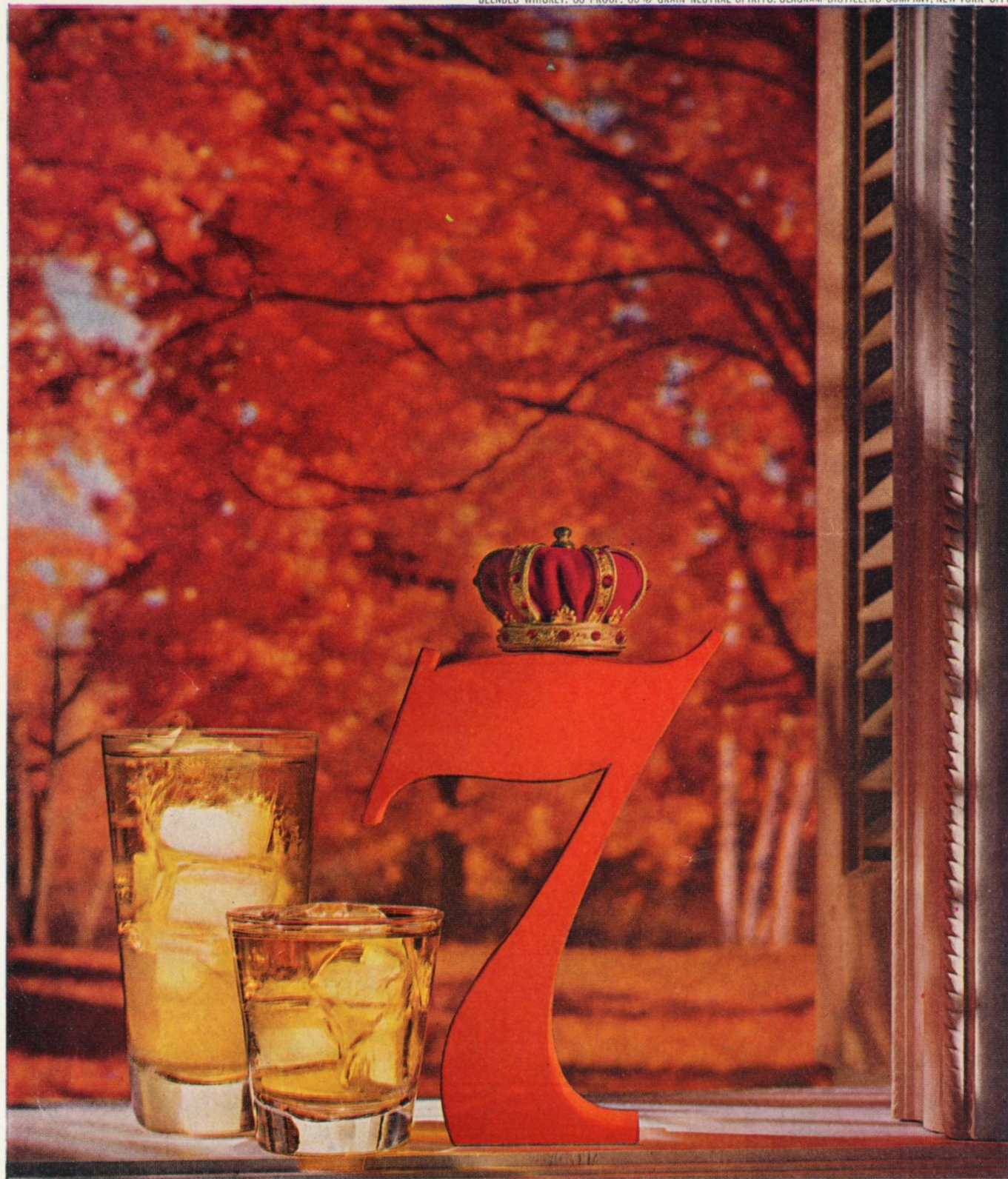
## DALLAS — BYE

Won 0, Lost 11, Tied 1

28—Pittsburgh .....	35
25—Philadelphia .....	27
14—@ Washington .....	26
7—Cleveland .....	48
10—@ St. Louis .....	12
7—Baltimore .....	45
13—Los Angeles .....	38
7—@ Green Bay .....	41
14—San Francisco .....	26
7—@ Chicago .....	17
31—@ New York .....	31
14—@ Detroit .....	23
177	369

PLEASE USE ENTRANCE RAMP NEAREST YOUR SEAT





# Invitation to Relaxation

The time is twilight, the mood is mellow, the drink is 7 Crown—the happiest combination to end a long day's labors. If you haven't savored these rewards of relaxation, do so tonight, keeping in mind the spirit of the hour is the whiskey that delivers clarity and character of taste surpassing any other. **SAY SEAGRAM'S AND BE SURE**





HERE'S A CHESTERFIELD EXCLUSIVE

The Big Clean Taste  
of top-tobacco end to end...  
...every puff air-softened  
by top-porosity paper



*They Satisfy!*

**BEST TASTING SMOKE IN THE U. S. A.!**

© Liggett & Myers Tobacco Co.