

OFFICIAL PROGRAM • 50 CENTS

YANKEE STADIUM



N.Y.

GIANTS

VS.

DALLAS

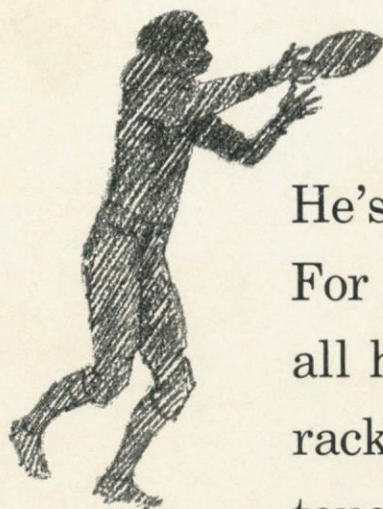
COWBOYS

OCTOBER 29, 1961

Marlboro joins the cheering section on



KYLE ROTE DAY!



He's earned this day—no doubt about it. For 11 years, now, he's given the Giants all he had. Last year was a big one—he racked up 750 yards and led the team in touchdowns. *Congratulations, Kyle!*

You get a lot to like with a

Marlboro

—the filter cigarette with the unfiltered taste

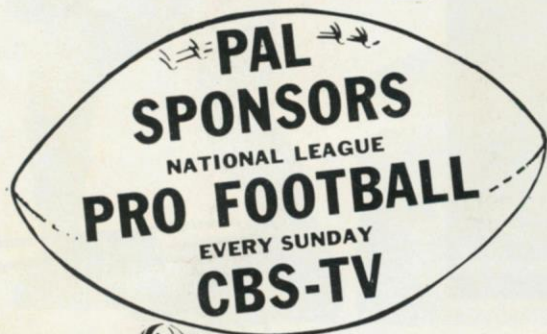


NEW

PAL®

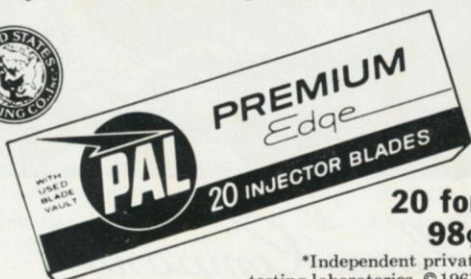
PREMIUM INJECTOR BLADES

**TAKE FRICTION OUT OF SHAVING...
PUT COMFORT IN!**



New Pal® Premium blade's *extra* sharp edge rides on a microscopic film of liquid ball bearings. This combination of *extra* sharpness and invisible liquid ball bearings makes new Pal blades as friction-free as a blade can be—takes friction out of shaving, puts comfort in. Pal Premium blades fit all injector razors. Shave with them soon. Your favorite store carries them.

United States Testing Company* certifies: Pal Premium Injector Blades . . . best buy for combined sharpness and durability.



**20 for
98¢**

*Independent private testing laboratories. ©1961, American Safety Razor Company, a division of Philip Morris, Inc.

OFFICIAL PROGRAM

NEW YORK GIANTS



vs. DALLAS COWBOYS

YANKEE STADIUM • Oct. 29, 1961

Volume 37

Number 3

CONTENTS

Quarterbacks in Number—Unnumbered	3
Kyle Rote Day Acknowledgments	5
Giants In Action	7
Redskins Here Next Sunday	9
Giant Close-Ups	11 and 29
Giant Jottings	13
Giants-Cowboys Series Review	15
Giant Statistics	17
Giant Roster and Line-Ups	18
Cowboys Roster and Line-Ups	19
Looking Over the Cowboys	21
Cowboy Leaders	23
NFL News and Notes; NFL Leaders	25
Giant Blackboard: Pass Routes	27
Yankee Stadium Services	33
NFL Officials' Signals	35
NFL Pairings and Results	36

New York Football Giants

JOHN V. MARA	President
WELLINGTON T. MARA	Vice-President
TIMOTHY J. MARA	Secretary-Treasurer
RAYMOND J. WALSH	Business Manager
AL SHERMAN	Head Coach
JIM LEE HOWELL	Director of Personnel
HARLAND SVARE	Defensive Coach
ANDY ROBUSTELLI	Assistant Defensive Coach
JIM PATTON	Assistant Defensive Coach
ED KOLMAN	Line Coach
KEN KAVANAUGH	End Coach
DON HEINRICH	Backfield Coach
JOHN JOHNSON, SID MCRET and JOHN DZIEGIEL	Trainers
DR. FRANCIS SWEENEY	Physician
DR. ARTHUR CROKER	Dentist
DON SMITH	Director of Publicity
DAN RUBIN	Photographer

Cover Illustration by Carol Johnson

This book published by
HARRY M. STEVENS, Inc.
320 Fifth Avenue
New York 1, N. Y.

Quality



Products of *The American Tobacco Company*

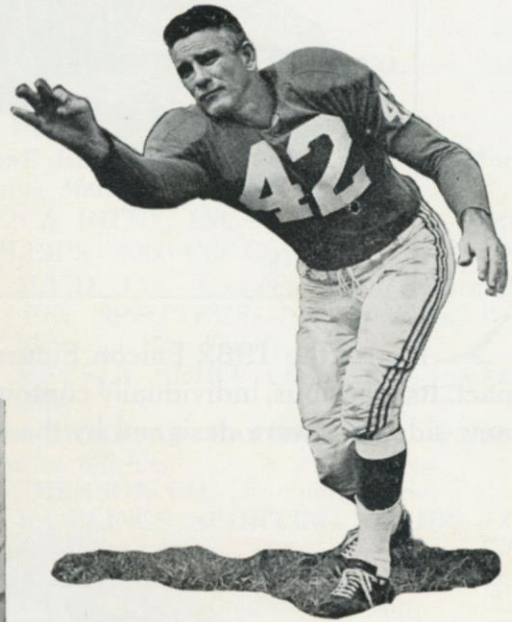
Quarterbacks in Number— But Unnumbered



Y. A. TITTLE



ALLIE SHERMAN



CHARLIE CONERLY

FOR better than a month, under questioning so probingly argumentative that it would try the patience of a saint, Allie Sherman has tried to explain that Y. A. Tittle and Charlie Conerly are an entry at quarterback for the Giants—not rival contenders for the job.

"We have no No. 1 quarterback, as far as I'm concerned," the Giant coach has said time and again. "We have two experienced men in Conerly and Tittle, both of whom have proved they have what it takes to play in the National Football League, and a young fellow in Grosscup who shows a lot of promise.

"There's a place for all three in the Giant picture or we wouldn't keep them around. From game to game, we may start either Tittle or Conerly and either may go all the way. I'm not much for making changes during a game just for the sake of change.

"We're happy to have two such good men on our side, with a third in reserve and, from where I sit, it's besides the point who is No. 1 or No. 2 or even No. 3. What

is important is that we have good protection at quarterback, which you have to have to get anywhere in this league."

Last Sunday in the stirring 24-14 victory over the Rams, Conerly and Tittle wrote Q. E. D. under the Sherman Theorem. Maybe the inquisitors will get off Allie's back for a while as a result.

Tittle, who had carried the greater share of the quarterbacking load since the road game in Washington and had started in St. Louis and Dallas (where Conerly did not play at all), put the Giants out in front of the Rams, 10-0, in the first half. Y. A. flipped to Alex Webster for the touchdown on an artfully contrived screen pass play that covered 59 yards.

In the third period, the Los Angeles powder keg exploded. The Rams got two quick touchdowns on long-range strikes and took a 14-10 lead.

So Conerly swung into action and the Giant attack rewoke to roaring life. On the second of four excitingly swift downfield drives, Charlie pegged a 10-yard touch-

down pass to Kyle Rote for the winning score, then combined with Del Shofner on a 37-yard masterpiece for a lock-up tally.

This was collaborative quarterbacking at its best and hail to its co-authors.

Hail also to the rest of the Giants. With Joel Wells and Allan Webb joining Webster, Bob Gaiters and Joe Morrison as effectives, the New Yorkers mounted their strongest running attack to date. Joe Walton, as well as Rote and Shofner, was a pass-catching hero. Holding the rampant Rams to two touchdowns was a defensive coup. Pat Summerall got his sixth 1961 field goal and stretched his string of conversions to ninety-nine.

Team effort like this will keep the Giants up there in their torrid race with the Eagles for the NFL title. But there's no slack for a let-down—today against the Cowboys, next Sunday against the Redskins, the Sunday after that against the Eagles themselves or on any Sunday.

PLEASE USE ENTRANCE RAMP NEAREST YOUR SEAT



FORD FALCON for 1962... best shape economy's ever been in!

Here's the 1962 Falcon Futura—the most elegant version of America's favorite compact. Its luxurious, individually contoured twin front seats, handy personal console and elegant new side trim were designed by the men who created the Thunderbird. The Futura also has Falcon's vacation-sized trunk . . . and the Falcon's famous gas economy. And it's just one of 13 new Falcons for '62 —the largest choice ever!



Now—take a look at the new Falcon Squire, the only compact wagon of its kind. Outside, it has steel side paneling with an elegant woodlike finish. Inside, it is available with the Futura's twin bucket seats and handy console. Under the hood, there is a new improved version of the Falcon Six engine that this year recorded the best gas mileage for a Six or Eight in the 25-year history of the Mobilgas Economy Run.

Ford Falcon '62
MORE FROM THE CAR AMERICA LOVES MOST



Peanuts Characters © 1950
United Feature Syndicate, Inc.



The Kyle Rote Day Committee Wishes to Thank the Following Organizations for Their Participation—

N. Y. FORD DEALER'S ASSOCIATION—1962 Thunderbird Landau Coupe
DALLAS, TEXAS, FANS—1962 Ford Ranch Wagon
PAN AMERICAN WORLD AIRWAYS—Transportation to and from Europe
AMERICAN EXPRESS WORLD TRAVEL SERVICE—Accommodations in Europe
WNEW RADIO—RCA Color TV, Stereo, AM-FM Radio Combination
HEREFORD ASSOCIATION—Champion Hereford Steer
PHILCO CORP.—2 1-ton Room Air Conditioners
FAIRCHILD CAMERA CORP.—16 mm. Sound Movie Camera and Projector
SAN ANTONIO, TEXAS, FANS—20 cu. ft. Home Freezer
E. LEITZ, INC.—35 mm. Leica Camera
BULOVA WATCH CO.—Accutron Wrist Watch
SAMSONITE CO.—10 pieces Samsonite Luggage
JOHNSTOWN, N. Y., FANS—Leather Goods for entire family
WESTMINSTER PRINTING CO.—All Printing for Kyle Rote Day
MACK KENNETH CO.—Fur Trimmed Women's Coat
P. BALLANTINE & SONS—U. S. Treasury Bond
THE NEW YORK FOOTBALL GIANTS, INC.—Silver Tea Service
THE PARK PLAZA HOTEL—Meeting Rooms
ESKA CORP.—Power Driven Snow Thrower

THE GARDEN EQUIPMENT CO.—Snow Plower and Lawn Sweeper
THE PARKER CO.—Lawn Sweeper
MORSE ELECTRIC PRODUCTS CO.—Morse Sewing Machine
MILES & RILEY, INC.—Cashmere Top Coat
TRIPLER'S—\$200 Gift Certificate
THE B.V.D. CO.—Complete B.V.D. Wardrobe
AMF PIN SPOTTERS—Bowling Balls, Bags and Shoes for Rote Family
VAN HEUSEN SHIRT CO.—Pleasurewear wardrobe
SAVIN BUSINESS MACHINE CO.—Portable Dictation Machine
THE EMERSON CO.—Portable TV Set
THE RAWLINGS SPORTING GOODS CO.—Golf Clubs and Bag
HARRY ROLNICK—\$100 Resistall Texas Hat
SECTION 5 CLUB—Gold Money Clip
J. P. STEVENS CO.—4 pairs Slacks for Mr. Rote and 3 Sons
GOLET ORIGINALS—Coat for Mrs. Rote
PEPSI COLA CO.—1 year Supply of Pepsi Cola
L. ABLESON & SONS—Blazers for 3 Rote Boys
SIMPSON CLOTHES—Sport Jacket
LOUIS MARX & CO.—Toys for Rote Children
CANADA DRY CORP.—Soda Cooler
FINKLE & CO.—Washer Drier Combination
NEPTUNE STORAGE CO.—Storing, Insuring and Transporting All Gifts

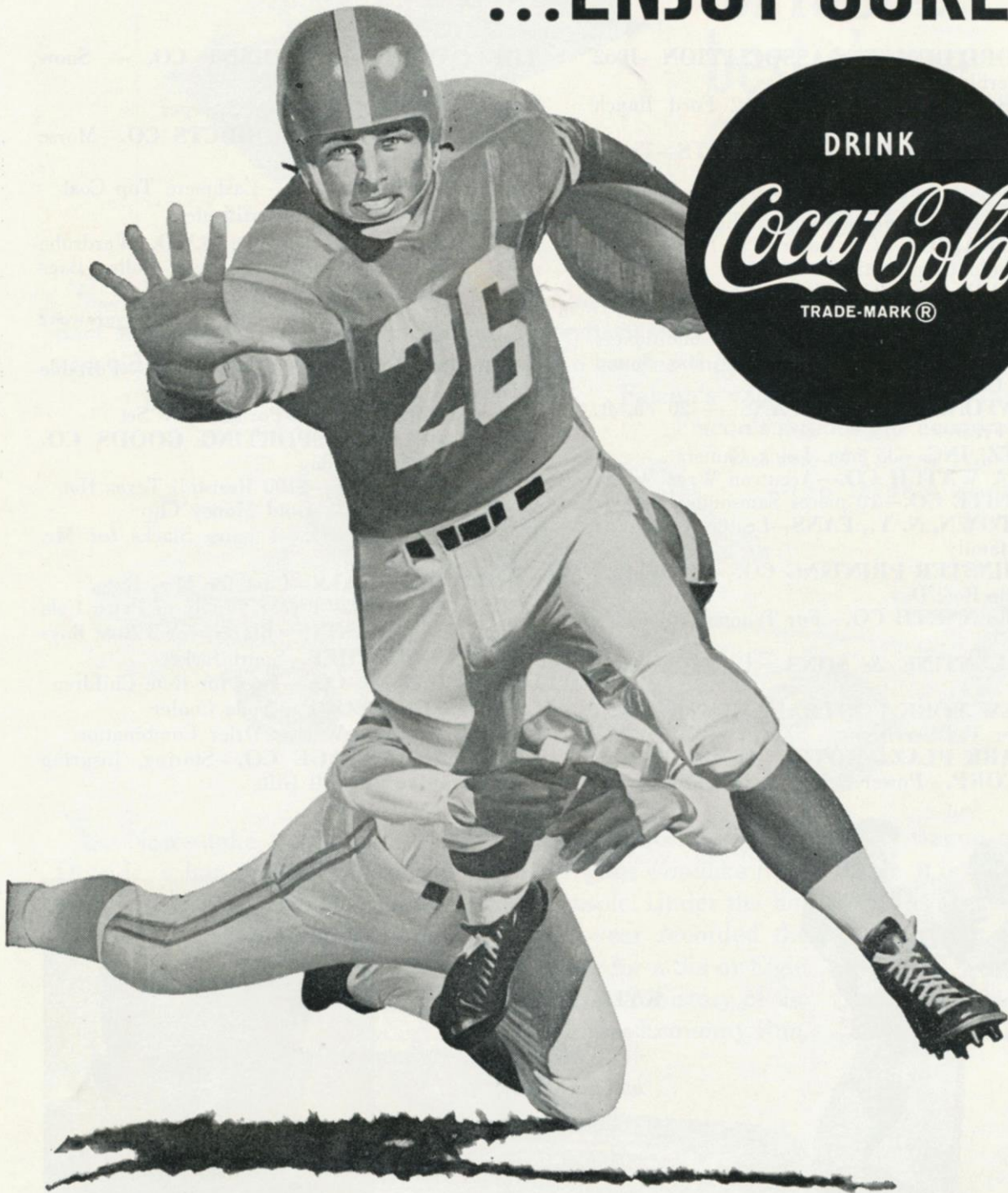


KYLE ROTE —

*Today
and Every Day,
a Giant
among Giants.*



BE REALLY REFRESHED!
...ENJOY COKE!



Giants in Action



BREAKTHROUGH—Rosy Grier and Mo Modzelewski barrel into the enemy backfield.



FREE AND CLEAR—Jimmy Patton off and running.



PASS POCKET—Giant line sets up a screen for Charlie Conerly.

Photographer Ken Regan brings you into the thick of the scrimmage with these rousing clips from his Giant action portfolio. Capturing the spirit of pro football, they illustrate the speed, power, determination and finesse that go into this wonderful game.



UP TO NO GOOD—Sam Huff poises himself for a "red-dog" pounce.



END OF LINE—Giant pursuit inundates a ballcarrier who thought he was going somewhere.

FILL YOUR TANK WITH CHEVRON SUPREME



You're always welcome at the Chevron Supreme pump — no matter what you drive! Chevron Supreme brings out the best in cars — particularly those with modern high-compression engines. It delivers all the power and mileage built into these engines. Makes 'em lively and keeps 'em lively. And right next to the Chevron Supreme pump, you'll find RPM Motor Oils . . . the only complete line of oils with ashless detergent! Could you ask for anything more? No. Because you never have to ask for the one other thing you want . . . that superb Chevron service!

***At the sign of the CHEVRON,
we take better care of your car.***

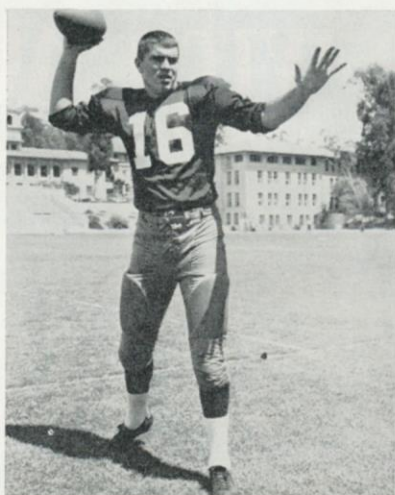


PRODUCTS OF CALIFORNIA OIL COMPANY

Redskins Here Next Sunday



DON BOSSELER



NORMAN SNEAD



JIM CUNNINGHAM

IN the third game of their five-game home stand at the Stadium next Sunday, the Giants will face their old foes, the Washington Redskins. Contests with the world champion Philadelphia Eagles and the Pittsburgh Steelers follow on the next two Sundays.

In the midst of an all-out rebuilding program under Bill McPeak, a new coach, the Redskins got off to a slow start. But their

numerous rookies are beginning to get the feel of National League football and they figure to be a lot tougher in the second half of the season, which opens with this game.

In any case, the Giants have plenty of respect for Washington. The young Skins gave the New Yorkers fits in the nation's capital on October 1, grabbing an early lead and sticking in contention to

the end of a 24-21 thriller won by the Giants.

Washington will introduce a bright young quarterback in Norm Snead and other talented newcomers in Jim Cunningham, Jim Kerr, Riley Mattson, Joe Krakoski and Fred Hageman. Their cast also includes Dynamic Don Bosseler, Dashing Dick James, Mean John Paluck, Battering Bob Toneff, Handy Andy Stynchula and other familiars.

COMING GIANT ATTRACTIONS AT STADIUM

GAME

4

NOV. 5

WASHINGTON

REDSKINS

with Norm Snead, Don Bosseler and Dick James

GAME

5

NOV. 12

PHILADELPHIA

EAGLES

with Sonny Jurgensen, Tommy McDonald and Ted Dean

GAME

6

NOV. 19

PITTSBURGH

STEELERS

with Bobby Layne, Tom Tracy and John Henry Johnson

GAME

7

DEC. 17

CLEVELAND

BROWNS

with Jimmy Brown, Bob Mitchell and Milt Plum

TICKET PRICES

\$5.00

**BOX
SEATS**

\$4.00

**RESERVED
SEATS**

Where to Buy Tickets in Person

YANKEE STADIUM
161st St. and River Ave.
Bronx, N. Y.
Mon.-Sat. 9-5 P.M.

YANKEE TICKET OFFICE
North Mezzanine
Grand Central Station
Mon.-Fri., 10-6 P.M.; Sat., 10-4

or

DAVEGA STORES

Hackensack—325 Main Street

Newark—110 Market Street

also

ANDY ROBUSTELLI'S SPORTS SHOP

in Stamford, Conn.

Address Mail Orders to:

TICKET MANAGER NEW YORK FOOTBALL GIANTS
10 Columbus Circle
New York 19, N. Y.

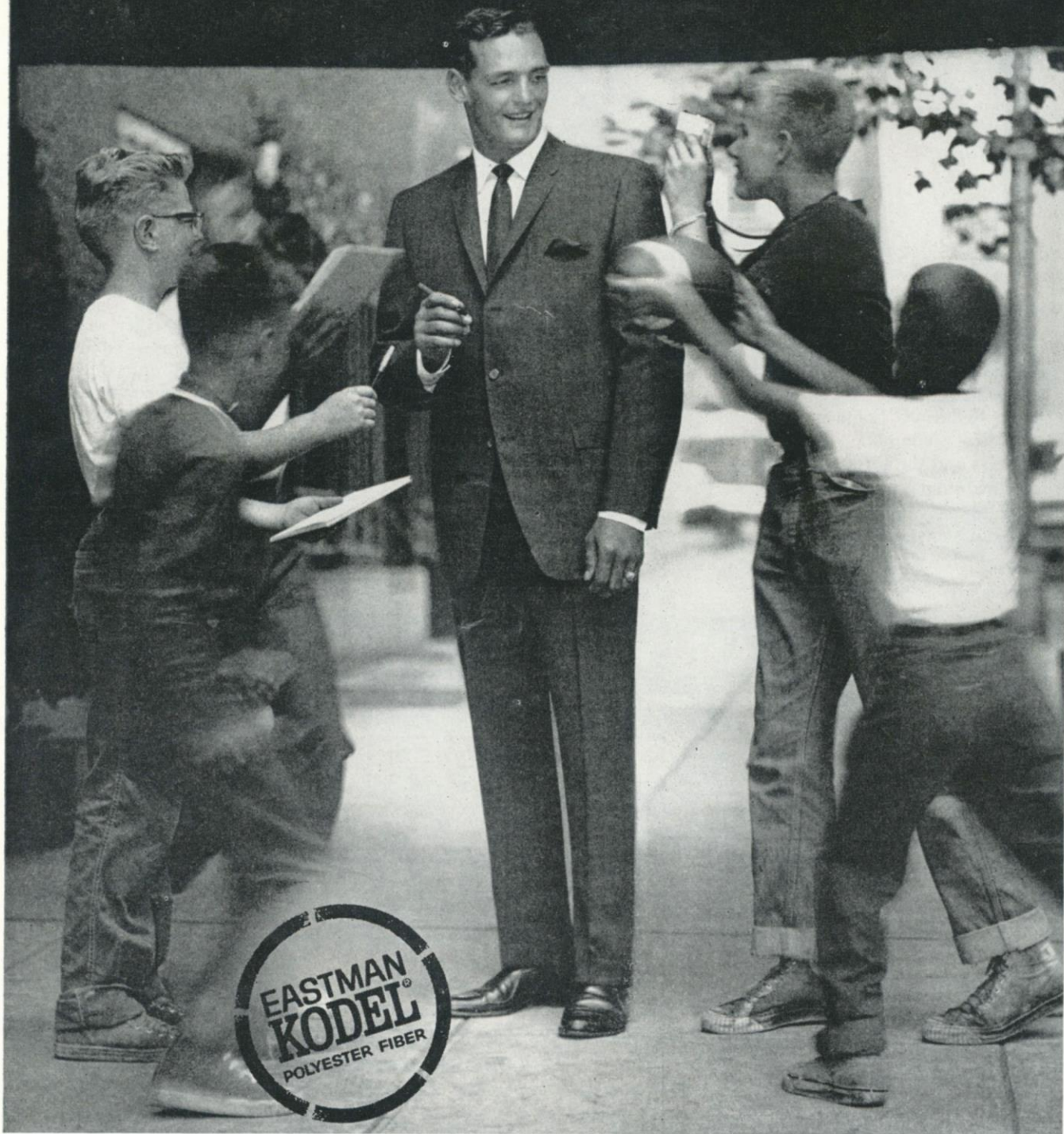
(Add 50c for mailing and handling)

Make certified check or money order payable:

NEW YORK FOOTBALL GIANTS, INC.

Tickets Now on Sale at Advance Sale Windows in Main Lobby of Stadium

score with KODEL



N. Y. Giants pro football star Dick Lynch has to look good off the gridiron, too. He's for Kodel. This stay-fresh polyester fiber has put first-string crispness and comfort into men's wear. You'll find Kodel in suits, slacks, shirts, ties, rainwear, topcoats . . . in all the clothes that make for America's best-pressed men.

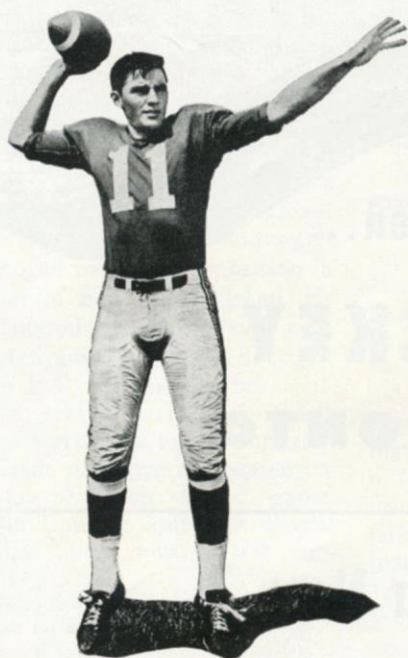
Kodel is the trademark for Eastman polyester fiber. Only the fiber is made by Eastman, not fabrics or clothing.

EASTMAN CHEMICAL PRODUCTS, INC., subsidiary of Eastman Kodak Company, 260 MADISON AVENUE, NEW YORK 16

**Headquarters for men's wear
blended with Kodel**

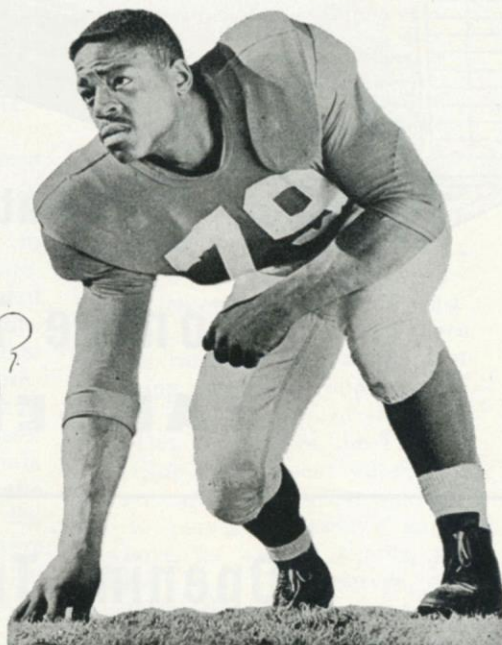
STERN'S
NEW YORK, N.Y. • PARAMUS, N.J. • PATERSON, N.J.

Giant Close-Ups



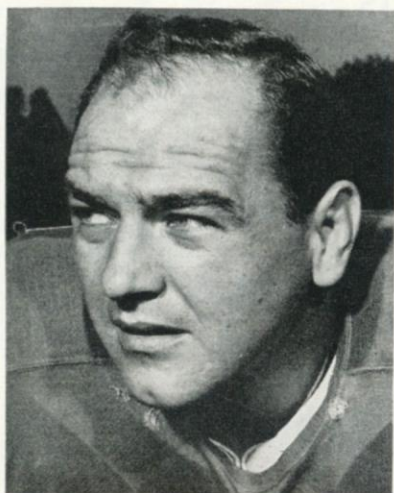
Rose Rosiny

Lee Grosscup



Lee Grosscup (11) begins his second official season with the Giants a long step closer toward being a well-rounded pro quarterback. The Giants drafted him No. 1 in 1959, trained him on their taxi squad that year and put him to work on a limited basis in 1960. One of the nation's top passers at Utah, Lee rates high in the Giants' future plans.

Roosevelt Brown (79), now in his ninth season with the Giants, has been a model performer at offensive left tackle for eight years. A 27th-round draft choice in 1953, Rosy ranks as one of the most inspired "deep dip" finds in Giant history. The 6 foot 3 inch, 225-pound Morgan State graduate has the speed of a halfback, blocks with shattering impact and is a key goal-line defender.



Ray Wietecha

Reliable **Ray Wietecha (55)** has been the Giants' "snapper" since 1954, after a year of rookie service as an offensive and defensive jack-of-all-trades. They don't make centers any better than this agile, 230-pound Northwestern graduate. Because of his exceptional mobility, Ray makes side blocks that few teams would even consider assigning to the man over the ball. An "iron man," Ray has played in more than 100 straight Giant games.



Cliff Livingston

The Giants couldn't lick **Cliff Livingston (89)** so they joined him, to give a reverse twist to the success story of a dedicated football player. A brother of Howie Livingston, Cliff was signed as a free agent in 1954. For a couple of seasons, he hung on, by the skin of his teeth, as a spare. His fiery play on the special units finally won attention and now he's solidly established at left linebacker.



Jim Katcavage

Jim Katcavage (75) has quietly developed into one of the NFL's most destructive defensive ends. The 6 foot 3 inch, 240-pound Dayton graduate has been a fixture on the left flank of the four-man Giant rushline since 1957, after a freshman season of utility work. He's a tirelessly powerful crasher who delights in making life miserable for opposing passers.



Your Dates at the Garden...

Tonite 7 PM HOCKEY
RANGERS vs TORONTO

Opening Tuesday thru Nov. 7

Twice Daily including Sunday

NATIONAL HORSE SHOW

INTERNATIONAL JUMPING CONTESTS

ARGENTINA • CANADA • IRELAND • MEXICO • UNITED STATES

THRILLING BEN HUR CHARIOT TEAMS

— HOMECOMING GAMES —

Wed., Nov. 8 HOCKEY 7:30 PM
RANGERS vs BOSTON

Fri., Nov. 10 BASKETBALL

Special Attraction

KNICKS vs DETROIT

HARLEM MAGICIANS vs CONNECTICUT ALL-STARS

Giant Jottings

KYLE Rote, who already holds the Giant career records for most yards gained on pass receptions and most touchdown passes caught, has moved to the top in another receiving category—number of receptions. The Mighty Mustang broke Frank Gifford's mark of 257 catches a couple of games ago. . . . Pat Summerall has moved into the top position in number of field goals kicked. He had entered the season tied with Ben Agajanian at 46 each. . . .

The J. P. Stevens Co. has instituted weekly awards of sports clothes wardrobes to the outstanding Giant offensive and defensive players of each home game. Charlie Conerly and Jim Patton won the initial awards last Sunday.

Nobody can say the Giants aren't an articulate group of football players. The journalists among them outnumber even the sportscasters. Giant scribes include Sam Huff (*Journal-American*), Charlie Conerly (*Daily*

Mirror), Joe Morrison (a weekly pro round-up for his hometown paper in Lima, Ohio), Lee Grosscup (has syndicate outlets in Santa Monica, Calif., and Salt Lake City) and Larry Hayes (keeps various Tennessee papers informed on the pros).

Many observers have been struck by the resemblance of Mickey Walker, the Giants' promising rookie offensive guard, to Mickey Mantle of Yankee baseball fame. . . . Chris Schenkel and Johnny Lujack, the Giants' road game telecasters over Channel 7, have picked up the nickname of Big Red that his teammates bestowed on Alex Webster a few seasons back. . . . Chalk up another NFL record for the Giants. No other team in the league ever has had two players (Andy Robustelli and Allen Webb) from a defunct college (Arnold) on its roster.

Jack Stroud, the Giants' stalwart running guard, is a weightlifting buff. He has totalled close to 1,000 pounds in the three

standard lifts and would be a prime prospect for international honors if he were eligible to compete as an amateur. . . . Bob Simms' younger brother, Steve, is having another brilliant season at fullback for Rutgers. . . . Cliff Livingston is an enthusiastic sailor, who has logged many a mile on the Pacific in his sailing schooner.

The marching band of North Carolina College of Durham, N. C., will provide today's between-the-halves entertainment. This fast-stepping, sweet-playing 120-piece unit is rated as one of the best marching musical groups in the nation. . . . As part of the Kyle Rote Day ceremonies, the Twenty-One Club will present watches to the outstanding offensive and defensive players in today's game. Cowboys, as well as Giants, are eligible. . . . All reserved seat tickets for the Nov. 12 game with the Eagles have been sold. . . . Phil King will be eligible for reinstatement on the Giant active list next Sunday.



HOTEL MANHATTAN

HEADQUARTERS FOR
PROFESSIONAL TEAMS
IN NEW YORK CITY

Hotel Manhattan offers 1400 new air conditioned guest rooms, each with television and radio. Known as the "Home of Champions," this magnificent skyscraper hotel is ideally located in the heart of Times Square. Meet your friends at the popular Playbill Restaurant for cocktails, luncheon, dinner and supper.

Express Subway Trains Speed You to
Yankee Stadium from the Private
Subway Entrance of the Hotel Manhattan

ERWIN O. SCHEL, Manager
CHARLES J. BORGES, Sports Representative



HOTEL

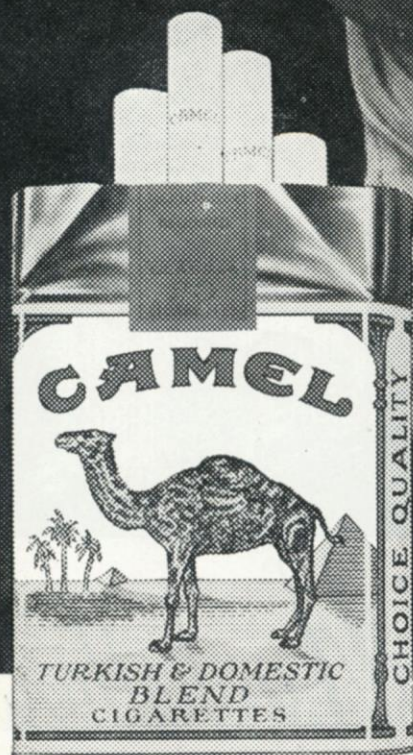
Manhattan
44TH TO 45TH STREETS
AT EIGHTH AVENUE • JUdson 2-0399



Have a real cigarette—have a **CAMEL**

Dick Nolan

PROFESSIONAL FOOTBALL STAR



The best tobacco makes the best smoke!

R. J. Reynolds Tobacco Co., Winston-Salem, N. C.

Series Review

THE Giants-Cowboys rivalry hasn't had time to acquire a patina . . . but it has started out in lustrous fashion.

First there was that 31-31 tie of last year at the Stadium, a real shocker for the Giants, because the freshly-organized Dallas team had arrived in New York with an 0-10 record.

Then, there was the stirring contest of two weeks ago at Dallas, when the Cowboys had the Giants roped in another tie until Don Chandler broke loose on a fake fourth-down punt to set up the lead touchdown and Erich Barnes applied the crusher with his record-tying 102-yard interception run. The final score of that one was 31-10 in favor of the Giants.

Tom Landry's long association with the Giants provides the basis for special incentive to Dallas in this third go-round. The Dallas coach has the advantage of intimate knowledge of Giant personnel and, needless to say, puts it to good use. This factor tends to make the sharply-improved Cowboys a tougher opponent for the Giants than for other teams.

Not one to refuse a challenge, Allie Sherman of the Giants relishes the duel of wits with his former colleague and close companion. Undoubtedly, Allie and his staff have planted false cues to garble Tom's reading of Giant plays and formations.

There'll be a lot of deep thinking, as well as hard hitting, on the field today in this third game between the Giants and Cowboys. And, to borrow a favorite term of the late Harry Balough, may the better adversary emerge triumphant.

GIANTS vs. ALL OPPONENTS

Opponent	W.	L.	T.	Pts.	Opp. Pts.
Baltimore Colts	2	3	0	88	102
Chicago Bears	14	20	2	451	554
Cleveland Browns	11	12	1	389	430
Dallas Cowboys	1	0	1	62	41
Detroit Lions	5	8	1	177	285
Green Bay Packers	15	14	2	425	396
Los Angeles Rams	4	7	0	232	238
Philadelphia Eagles	33	20	1	1011	838
Pittsburgh Steelers	30	19	2	925	726
St. Louis Cardinals	30	10	0	924	624
San Francisco 49ers	3	1	0	99	81
Washington Redskins	32	16	2	1027	799

FOR THE **Fastest, Smoothest Shaves Possible...**

Johnny Unitas

Star Quarterback of
the Baltimore Colts,
reveals his shaving secret!

Get Palmolive
Rapid-Shave

Super-Moisturized Lather
Soaks Whiskers With 17
Beard-Softening Ingredients



Rich Rapid-Shave lather is super-moisturized with 17 separate beard-softening ingredients that start to work on contact.



Rapid-Shave sets you up for a fast shave... a smooth shave... a complete shave... a comfortable shave from start to finish.



MENTHOL

REGULAR

SPICE

MAKE IT FAST AND MAKE IT SMOOTH—

USE RAPID-SHAVE IN THE MORNING!

Giant Statistics

SIX-GAME TEAM RECORD

GIANTS	OPPONENTS
46 First downs, rushing	36
64 First downs, passing	35
7 First downs, penalty	6
117 Total first downs	77
1,825 Total yards gained	1,499
849 Yards gained, rushing	769
976 Yards gained, passing	732
197 Number of rushes	185
193 Number of passes	147
91 Passes completed	63
13 Passes had intercepted	14
45.1 Punting average	43.3
25 Punts returned	13
5.8 Punt return average	6.0
15 Kick-Offs returned	22
21.9 Kick-Off return average	21.1
25 Penalties	30
268 Yards penalized	328
8 Fumbles lost	12

INDIVIDUAL STATISTICS

PASSING

	Att.	Comp.	Int.	Yds.	L.G.	TDs.	Pct.
Title	113	60	7	747	59	6	.531
Conerly	69	28	6	355	37	4	.406

SCORING

	TD-R	TD-P	TDs	PAT	FG	Pts.
Summerall	0	0	0	16-16	6-16	34
Shofner	0	4	4	0	0	24
Webster	1	2	3	0	0	18
Rote	0	3	3	0	0	18
Morrison	1	1	2	0	0	12
Title	1	0	1	0	0	6
Barnes	1	0	1	0	0	6
Hayes	1	0	1	0	0	6
Huff	1	0	1	0	0	6

RUSHING

	Att.	Yds.	L.G.	Avg.
Webster	74	402	59	5.4
Gaiters	44	223	29	5.1
Wells	21	69	17	3.3
Morrison	33	48	14	1.5
Webb	4	37	21	9.3
Conerly	10	22	7	2.2
Title	8	17	15	2.1

RECEIVING

	P.C.	Yds.	L.G.	TDs.
Shofner	28	397	44	4
Rote	22	317	48	3
Walton	18	283	37	0
Webster	6	68	59	2
Morrison	11	67	16	1
Gaiters	3	10	9	0
Hall	1	2	2	0
Wells	2	1	10	0

PUNT RETURNS

	No.	Yds.	L.G.
Stits	15	104	20
Wells	7	42	0
Morrison	1	0	0
Webb	2	0	0

KICK-OFF RETURNS

	No.	Yds.	L.G.
Gaiters	6	148	37
Stits	4	87	30
Wells	4	72	21
Morrison	1	21	21

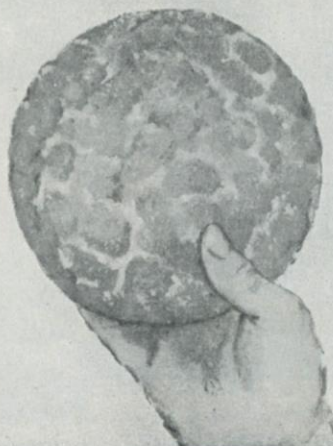
INTERCEPTIONS

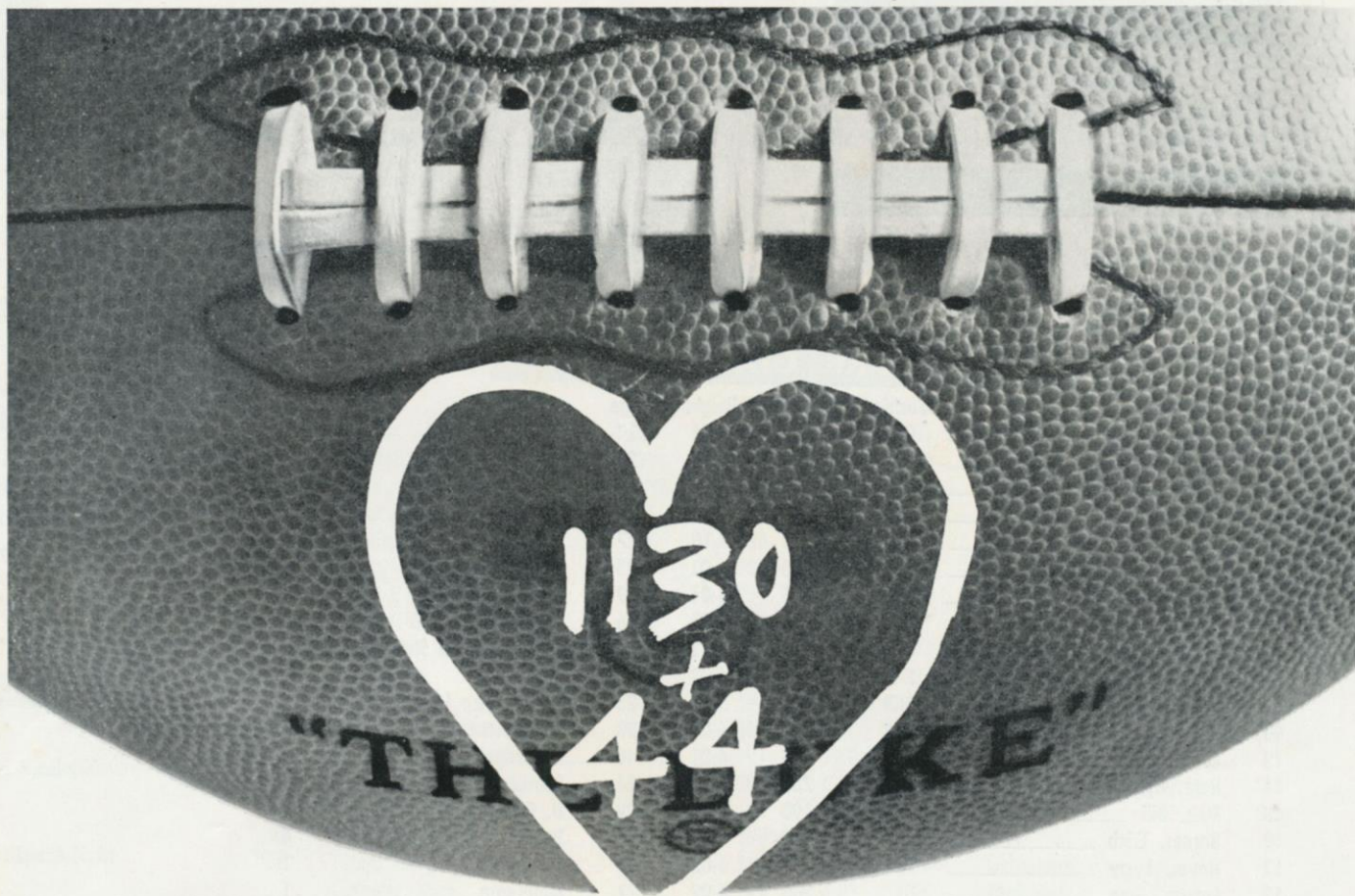
	No.	Yds.	L.G.
Barnes	4	121	102
Lynch	4	48	36
Patton	3	48	25
Livingston	2	0	0
Huff	1	13	13


PUNTING

	No.	Avg.	Lgst.
Chandler	30	45.1	66

"He tried to take my
Drake's
COOKIES"





WNEW RADIO LOVES KYLE ROE 

Giants on Offense

R. H. ROTE (44)	F. B. WEBSTER (29)	Q. B. TITTLE (14)	L. H. GAITERS (35)
R. E. WALTON (80)	R. T. LARSON (53)	R. G. STROUD (66)	L. T. BROWN (79)
	C. WIETECH (55)	L. G. DESS (62)	L. E. SHOFNER (85)

KICK-OFF
2:05 P.M.

Cowboys on Defense

L. E. LILLY (74)	L. T. HEALY (78)	M. L. B. TUBBS (50)	R. T. HERCHMAN (72)	R. E. BORDEN (87)
L. W. W. LIVINGSTON (41)	L. L. B. DOWDLE (30)	L. S. BERCICH (20)	R. S. MOEGLE (47)	R. W. BISHOP (44)
			R. L. B. BABB (33)	

NEW YORK GIANTS ROSTER

No.	Name	Position	Weight	Height	Age	College	Yrs. Pro.
11	Grosscup, Lee	QB	185	6:01	24	Utah	2
12	Hall, Pete	OE	200	6:03	23	Marquette	1
14	Tittle, Y. A.	QB	195	6:01	34	Louisiana State	10
20	Patton, Jim	DHB	185	5:10	29	Mississippi	7
21	Webb, Allan	D-OHB	180	5:10	27	Arnold	1
22	Lynch, Dick	DHB	200	6:01	25	Notre Dame	4
25	Nolan, Dick	DHB	185	6:01	29	Maryland	8
28	Wells, Joel	OHB	198	6:01	26	Clemson	1
29	Webster, Alex	OHB	220	6:03	30	North Carolina State	7
34	Chandler, Don	K-HB	205	6:02	26	Florida	6
35	Gaiters, Bob	OHB	215	5:11	23	New Mexico State	1
40	Morrison, Joe	OHB	212	6:01	23	Cincinnati	3
42	Conerly, Charlie	QB	185	6:01	40	Mississippi	14
44	Rote, Kyle	OE	200	6:01	34	Southern Methodist	11
48	Stits, Bill	D-OHB	190	6:00	29	U. C. L. A.	9
49	Barnes, Erich	DHB	198	6:03	26	Purdue	4
52	Hayes, Larry	LB	230	6:03	26	Vanderbilt	1
53	Larson, Greg	OT	240	6:02	22	Minnesota	1
55	Wietecha, Ray	C	230	6:01	32	Northwestern	9
61	Smith, Zeke	OG-LB	235	6:02	25	Auburn	2
62	Dess, Darrell	OG	245	6:00	26	North Carolina State	4
65	Walker, Mickey	OG	225	6:00	22	Michigan State	1
66	Stroud, Jack	OG	255	6:01	32	Tennessee	9
70	Huff, Sam	LB	230	6:01	26	West Virginia	6
72	Janerette, Charlie	OT	250	6:03	22	Penn. State	2
75	Katcavage, Jim	DE	240	6:03	26	Dayton	6
76	Grier, Roosevelt	DT	290	6:05	28	Penn. State	6
77	Modzelewski, Dick	DT	260	6:00	30	Maryland	9
79	Brown, Roosevelt	OT	255	6:03	28	Morgan State	8
80	Walton, Joe	OE	205	5:11	25	Pittsburgh	5
81	Robustelli, Andy	DE	230	6:01	33	Arnold College	11
82	Scott, Tom	LB	220	6:02	31	Virginia	9
83	Simms, Bob	LB	225	6:01	23	Rutgers	2
85	Shofner, Del	OE	185	6:03	26	Baylor	5
88	Summerall, Pat	K-OE	220	6:04	31	Arkansas	10
89	Livingston, Cliff	LB	215	6:03	30	U. C. L. A.	8

GIANT SPECIALS

PAT, FG and Kick-Offs—Sun
Chandler (34).
Punting—Chandler (34), Sh
Holding for PAT, FG—Co
Grosscup (11).
Kick Returns—Stits (48), G

OFFICIALS

Referee

(9) Emil Heintz, Pennsy

Umpire

(15) Ralph Morcroft, Oh

Head Linesman

(48) John Highberger, Car

Back Judge

(29) Stanley Jaworowski, C

Field Judge

(22) Charles Sweeney, No

COWBOY SPECIALS

Punting—Green (d
PAT, FG and Kick-Offs—C
Marsh (31)
Holding for PAT, FG—Le
Kick Returns—Perkins (43),
Livingston (41)

PLEASE USE ENTRANCE RAMP N

When it's Calvert Whiskey is delicious



KICK-OFF 2:05 P.M.

E. (85)

R. E. BIELSKI (36)

R. T. McCREARY (70)

F. B. MARSH (31)
R. G. FALLS (63)

C. CONNELLY (53)

Q. B. MEREDITH (17)
L. G. GROTTKAU (64)

L. T. FRY (75)

L. H. PERKINS (43)
L. E. HOWTON (81)

Cowboys on Offense

Giants on Defense

(87)
W. P (44)

L. E. KATCAVAGE (75)
L. H. BARNES (49)

L. T. MODELEWSKI (77)
L. L. B. LIVINGSTON (89)

M. L. B. HUFF (70)
L. S. NOLAN (25)

R. S. PATTON (20)

R. T. GRIER (76)
R. L. B. SCOTT (82)

R. E. ROBUSTELLI (81)
R. H. LYNCH (22)

DALLAS COWBOYS ROSTER

PIANT SPECIALISTS

and Kick-Offs—Summerall (88),
Chandler (34).
Chandler (34), Shofner (85).
for PAT, FG—Conerly (42),
Grosscup (11).
rns—Stits (48), Gaiters (35)

OFFICIALS

Referee

mil Heintz, Pennsylvania

Umpire

alph Morcraft, Ohio State

Head Linesman

Highberger, Carnegie Tech

Back Judge

ey Jaworowski, Georgetown

Field Judge

arles Sweeney, Notre Dame

WBOY SPECIALISTS

unting—Green (61).
and Kick-Offs—Green (61),
Marsh (31)
for PAT, FG—LeBaron (14)
ns—Perkins (43), Marsh (31),
Livingston (41)

No.	Name	Position	Weight	Height	Age	College	Yrs. Pro.
14	LeBaron, Eddie	QB	164	5:07	31	C. O. P.	9
17	Meredith, Don	QB	198	6:02	23	S. M. U.	2
20	Berich, Bob	DHB	199	6:01	24	Michigan State	2
21	Gregory, Glynn	OE	194	6:02	22	S. M. U.	1
30	Dowdle, Mike	LB	230	6:03	23	Texas	2
31	Marsh, Amos	FB	208	6:01	22	Oregon State	1
33	Babb, Gene	LB	216	6:03	26	Austin College	4
34	Douglas, Merrill	HB	204	6:00	25	Utah	4
35	Lockett, J. W.	FB-LB	230	6:02	25	Central State	1
36	Bielski, Dick	OE	225	6:01	27	Maryland	7
40	Harris, Jimmy	DHB	184	6:01	26	Oklahoma	3
41	Livingston, Warren	DHB	181	5:10	23	Arizona	1
43	Perkins, Don	OHB	191	5:10	23	New Mexico	1
44	Bishop, Don	DHB	208	6:01	27	City College of Los Angeles	3
45	Dupre, L. G.	OHB	185	5:11	28	Baylor	7
47	Moegle, Dick	DS	195	6:01	26	Rice	7
50	Tubbs, Jerry	LB	220	6:03	26	Oklahoma	5
53	Connelly, Mike	OC	238	6:03	25	Utah State	2
54	Howley, Chuck	LB	219	6:03	25	West Virginia	3
61	Green, Allen	KICK	216	6:02	22	Ole Miss.	1
62	Cvercko, Andy	OG	235	6:00	23	Northwestern	3
63	Falls, Mike	OG	248	6:01	27	Minnesota	2
64	Grottka, Bob	OG	230	6:04	23	Oregon	3
67	Houser, John	OG	245	6:04	26	Redlands University	5
70	McCreary, Bob	OT	256	6:05	22	Wake Forest	1
71	Granger, Charlie	OT	238	6:02	23	Southern University	1
72	Herchman, Bill	DT	249	6:01	28	Texas Tech	6
74	Lilly, Bob	DE	249	6:04	22	T. C. U.	1
75	Fry, Bob	OT	230	6:04	30	Kentucky	7
78	Healy, Don	DT	258	6:03	25	Maryland	4
79	Frost, Ken	DT	246	6:04	22	Tennessee	1
80	Murchison, Ola Lee	OE	205	6:03	23	Pacific University	1
81	Howton, Bill	OE	193	6:02	31	Rice	9
82	Clarke, Frank	OE	210	6:01	27	Colorado	5
83	Doran, Jim	OE	210	6:02	34	Iowa State	11
87	Borden, Nate	DE	234	6:01	28	Indiana	7

ANCE RAMP NEAREST YOUR SEAT

call for

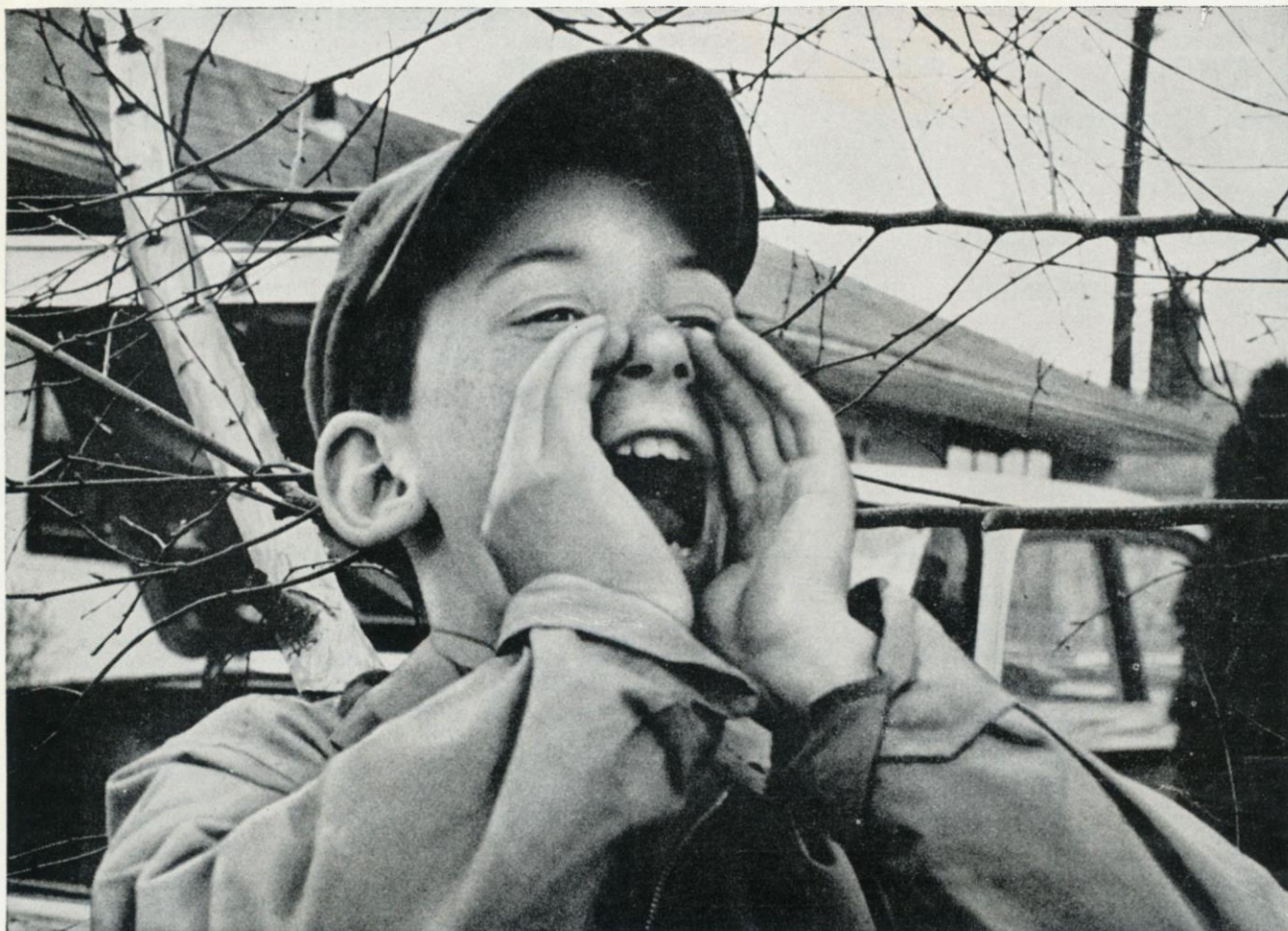
Calvert Reserve

—the right whiskey for today's taste

"Always Good as Gold"

HOUSE OF CALVERT, LOUISVILLE, KY. • FULL 86 PROOF • BLENDED WHISKEY • 65% GRAIN NEUTRAL SPIRITS.





Newest member of the “Come’n-See-Our-Brand-New-Car” Club

Your family, too, can trade in the old, drive home the new with an Auto Loan from Chemical New York

Their new car has Jimmy jumping, and the rest of the family are just as proud.

From here on, they'll be adding miles to family fun, going places they couldn't visit before. And so can you, if you join the "club". The "club", you see, is just what we call the thousands of families in our area who have financed their cars at Chemical New York.

Why did they come to us? Because we do just about everything but deliver the car.

See a "New York Banker with the hometown touch". At your nearest office of Chemical New York, you'll talk with a "hometown banker". He'll put together an Auto Loan that's planned to fit your budget. One with easy terms at low cost.

Puts you in the driver's seat in "no time flat". Come in today, and tomorrow he'll try to have the check in your hand.

Of course, if you've borrowed before from Chemical New York, you may have your loan in a matter of minutes. So, if you need a loan for a car (or for anything else to make living easier for you and your family), visit "The New York Bank with the hometown touch".

Three of our most popular Auto Loan Plans

Annual cost only \$4.25 per annum per \$100 of loan (deducted in advance)

AMOUNT OF LOAN	AMOUNT YOU RECEIVE	NUMBER OF MONTHS	YOU REPAY MONTHLY
\$1,440	\$1,378.80	12	\$120
	1,317.60	24	60
	1,256.40	36	40
2,160	2,068.20	12	\$180
	1,976.40	24	90
	1,884.60	36	60
3,240	3,102.30	12	\$270
	2,964.60	24	135
	2,826.90	36	90

Chemical Bank Founded 1824
New York Trust Company
The New York Bank with the hometown touch

Looking Over: The Cowboys



EDDIE LeBARON

WITH a makeshift, formative squad, the Cowboys shocked the Giants to the core last year by holding the New Yorkers to a 31-all tie at the Stadium. It was the only non-defeat for the Dallas entry in its initial National Football League season.

Now an established member of the NFL lodge, the Cowboys present a much stronger front. Until the forewarned Giants bumped them off, 31-10, at Dallas a couple of Sundays ago Tom Landry's charges were a party to a four-way tie for the Eastern Conference lead.

Since last season, Texas Tom, a perfectionist who won't be happy until he has a whole stack of blue chips to throw into the pot, has wheeled and dealed Cowboy personnel on a grand scale. To complete the renovation, he also added ten rookies. All in all, it's quite an imposing Dallas squad.

As television followers of the Giants know, Landry has hit on the idea of running a quarterback shuttle, a la the guard shuttle

used by Coach Paul Brown of the Browns. Eddie LeBaron, the Cowboys' cagy old pro, and Don Meredith, their rising young pro, call signals on alternate plays, with the benefit of between-downs briefing from Landry on the sidelines.

LeBaron and Meredith both throw well and they have able receivers in clever Billy Howton, Dick Bielski and Frank Clarke. In the Cowboys' three-end set-up, Howton and Clark are the flankers, with Bielski at the tight end. Veteran Jim Doran and the rookies, Glynn Gregory and Ola Lee Murchison are the spare receivers.

The Cowboys, perhaps, have even a sharper sting on the ground. In their first game against the Giants, they showed a quartet of fiery runners in Don Perkins, Amos Marsh, J. W. Lockett and Merrill Douglas. Besides these fast, hard-hitting youngsters, they also have the seasoned pros, L. G. Dupre and Don McIlhenny, who



DON MEREDITH

were sidelined with minor injuries two weeks ago.

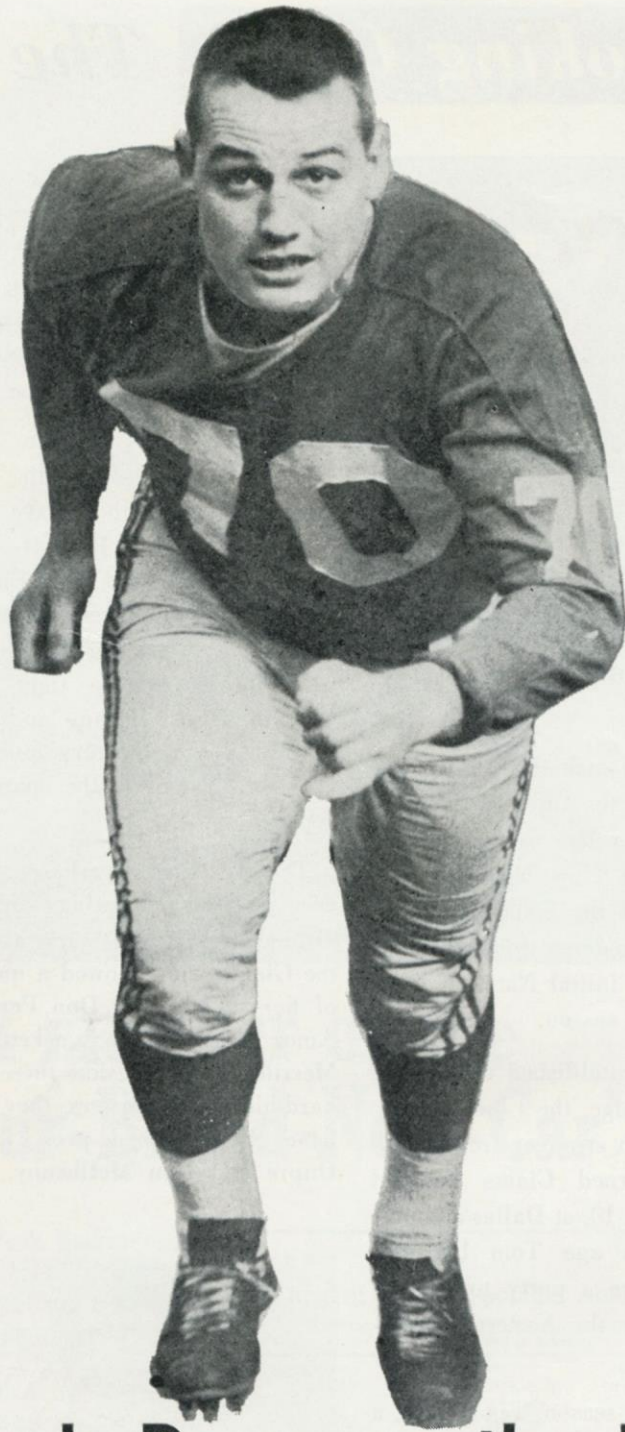
The offensive line also accents youth. Bob Fry at left tackle, a 7-year pro who is 30 years old, is its senior member. His running mate at right tackle, Charlie Granger, is a rookie. Mike Connelly, at center, is a pro sophomore, as is Mike Falls at right guard. Bob Grottkau, the left guard, is in his third NFL season.

The defense-conscious Landry has organized a tenacious deep secondary composed of Warren Livingston and Don Bishop on the wings and Bob Bercich and Dick Moegle in the safety slots. Bob Lilly, a 1960 All-America at T. C. U., has joined the veterans Don Healy, Bill Herchman and Nate Borden on the rushline, Jerry Tubbs, captain of the defensive platoon, is the middle line-backer, with Chuck Howley and Gene Babb on the corners. Against the Giants at Dallas, Ken Frost, a rookie defensive tackle from Tennessee, also was impressive.

The Cowboys definitely are an up-and-coming team.



TOM LANDRY



How Does It Look Down on the Field?

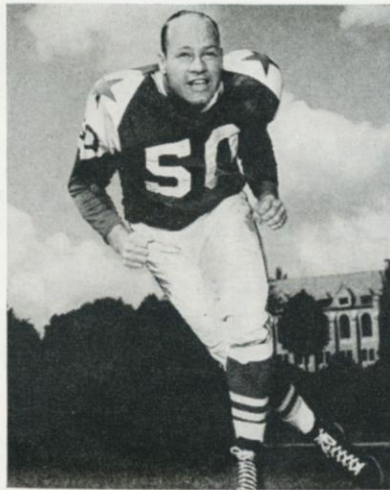
SAM HUFF . . . analyzes today's game from the player's point of view. What were the key plays? What worked for the Giants? Who played a particularly good game?

Why did Sam set up the defenses the way he did? **Read Sam Huff's**

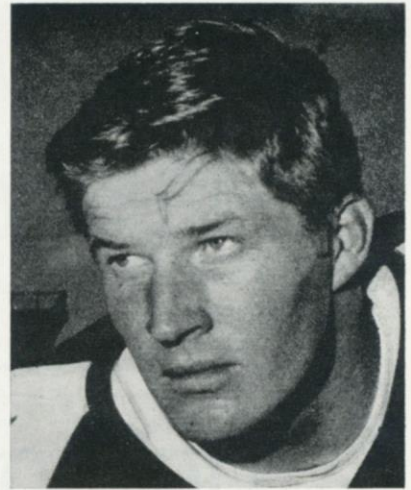
**Analysis — EXCLUSIVE in Tomorrow's
JOURNAL-AMERICAN**



BILL HOWTON



JERRY TUBBS



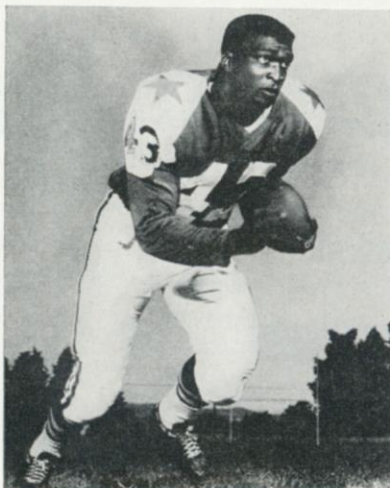
BOB LILLY

C
O
W
B
O
Y

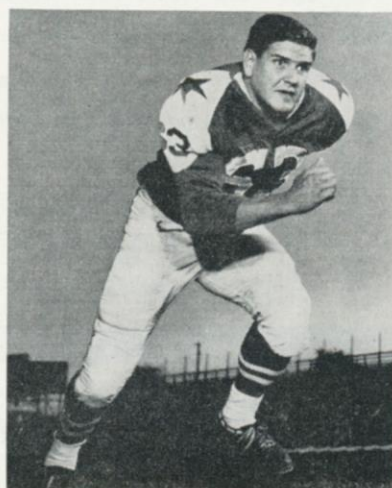


DICK MOEGLE

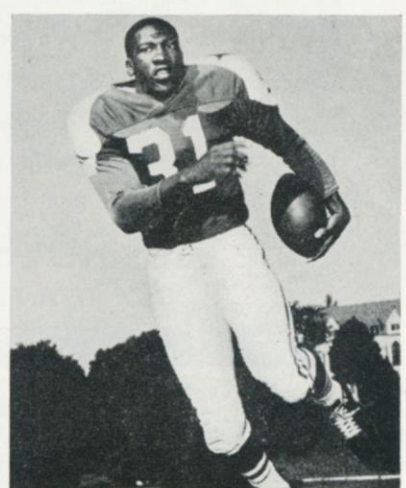
L
E
A
D
E
R
S



DON PERKINS



MIKE FALLS



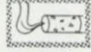
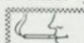


AMOS MARSH

Don't smoke another cigarette
until you learn what
VICEROY'S *Deep Weave** Filter
can do for your taste!




*Reg. U.S. Patent Office

Pure, Safe Filter Material Woven By Special Process. This remarkable filter starts with the same straight filter strands  as most good filters—then Viceroy weaves them by a special process into the amazing Deep-Weave Filter.  The Deep-Weave Filter weaves and reweaves the smoke—sends every puff deep through the filter to give you wonderful smoothness of taste  a taste that's never rough, never raw! This is the filter you can trust to give you good taste—the perfect filter to go with Viceroy's deep-cured blend.  That's why Viceroy tastes better than ever before! Don't smoke another cigarette until you learn what Viceroy can do for your smoking pleasure!

Only **VICEROY'S** Got It... At Both Ends!
GOT THE FILTER... GOT THE BLEND



© 1961, BROWN & WILLIAMSON TOBACCO CORPORATION  The Mark of Quality in Tobacco Products

NFL News and Notes

UNCLE Sam may have the deciding voice in the 1961 National Football League's conference title races. The activation of National Guard and reserve units has cost several teams the services of key players for the remainder of this season and, undoubtedly, there will be further disrupting call-ups before the campaign ends. The NFL is particularly susceptible to such military drafts because the rosters of its teams are crammed with red-blooded young college graduates who have pledged their readiness to come to the defense of their country when needed.

This is not a new situation. The NFL is properly proud of the glowing World War II record of its playing personnel. A V-J DAY (Aug. 14, 1945) tally by the league showed that 638 players who had participated in NFL games served in the Armed Forces. Of these, 355 were commissioned officers, 69 earned decorations and

21 sacrificed their lives. Among the casualties was Lieut. Al Blozis, who in pre-war service with the Giants, had displayed promise of being one of the NFL's greatest tackles. Blozis was killed by German machine gun fire in the Vosges Mountains of France on Jan. 31, 1945.

This has been the tradingest

season in NFL history. A recent check by the league office shows that 47 deals, involving 79 different players, were completed from the close of the 1960 campaign to the trading deadline earlier this month. The Giants were among the most active clubs in this department. They traded for nine players. The new Minnesota Vikings went into the mart most often, acquiring fifteen players.

* * *

The National League office based its ruling that Erich Barnes of the Giants had returned the ball 102 yards rather than 101 on his spectacular interception at Dallas on the position of his rear foot, on which he landed after making the catch. "The scorer couldn't be blamed for calling the play 101 yards," said Jim Kensil, the NFL's publicity director. "The ball itself was only a yard in back of the goal but Barnes took off from two yards back."

NATIONAL LEAGUE LEADERS

RUSHING

1. Taylor, Green Bay _____ 95 for 564 yds.
2. Brown, Cleveland _____ 125 for 501 yds.
3. Pietrosante, Detroit _____ 85 for 421 yds.

PASSING

1. Jurgensen, Philadelphia _____ 85 of 150 for 1288 yds.
2. Starr, Green Bay _____ 75 of 126 for 1080 yds.
3. Plum, Cleveland _____ 81 of 139 for 1022 yds.

RECEIVING

1. Phillips, Los Angeles _____ 30 for 543 yds.
2. Dial, Pittsburgh _____ 29 for 621 yds.
3. SHOFNER, NEW YORK _____ 28 for 397 yds.

SCORING

1. Hornung, Green Bay _____ 92 pts.
 2. Moore, Baltimore _____ 60 pts.
 3. Kilmer, San Francisco _____ 48 pts.
- Taylor, Green Bay _____ 48 pts.

Enjoy em at the Game and at Home

Here at the Yankee Stadium, reach for MRS. WAGNER'S delicious individual pies. At home, enjoy the fresh-baked goodness of MRS. WAGNER'S family-size pies. Both ways, you're in for real enjoyment.



Why bake when you can buy

Mrs. Wagner's Pies

After
the game,
enjoy
Schenley
the only whisky with whipped-in smoothness



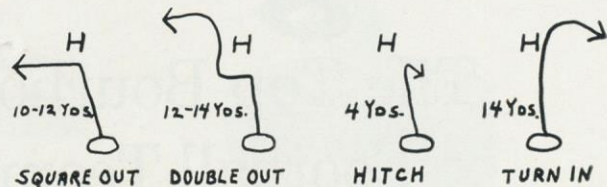
SCHENLEY DISTILLERS CO., N.Y.C. • BLENDED WHISKY, 86 PROOF, 65% GRAIN NEUTRAL SPIRITS

Giant Blackboard: Pass Routes

THOSE squiggles at the top of the opposite column represent some of the pass routes followed by the Giant ends in their highly successful 1961 efforts to get clear of covering halfbacks. Giant end coach Ken Kavanaugh, a doodler from way back at this type of thing, kindly supplied the basic drawings and descriptive captions.

The route names and the indicated distances are important because they figure in the play signal called in the Giant huddle. For instance, when Y. A. Tittle or Charlie Conerly calls a "square out" pass to Del Shofner, they and Shofner both immediately know that Del will go downfield from his split left end position, straight or on a slight slant, for 10 to 12 yards, then break sharply out toward the left sideline. This foreknowledge and mutual understanding make it easier for the passer to spot his receiver and defines the target area for the receiver.

The drawings trace only the basic routes. It takes a lot of artful dodging for the receiver to run them in such a way as to get free and clear to the proper place at the proper time. To gain that precious extra step on the covering defender before making his key cut, a receiver must fake and feint, stop and go, pivot and sidestep and what



have you. These are on-the-spot improvisations that can't be diagrammed.

In Shofner and Kyle Rote, the Giants have two of the master escape artists in pro football. Each has more moves than a shimmy dancer doing the buck-and-wing. It will be well worth while to take your eyes off the ball now and then and watch Del and Kyle operate on the corner halfbacks assigned to cover them.

"The receiver has the initiative and the advantage of knowing where he's finally going," Coach Kavanaugh points out. "But he can lose this edge in a hurry if he isn't devious in getting there. The secret of getting loose is to make a defender think you're going where you're not. That'll keep him off-balance and far enough away from you to give you room to operate."

SAM HUFF'S MR. DEFENSE

- SENSATIONAL NEW FOOTBALL GAME.
- REAL FOOTBALL STRATEGY WITH THE THRILLS OF OFFENSIVE PLAYS AND DEFENSIVE FORMATIONS.
- ON SALE AT ALL LEADING RETAIL OUTLETS.
- SAM WILL APPEAR IN PERSON AT B. ALEXANDER'S TOY DEPT. IN REGO PARK ON WEDNESDAY, NOVEMBER 1 FROM 7 TO 9 P.M.
- IN THE EVENT YOUR FAVORITE STORE IS TEMPORARILY OUT OF "MR. DEFENSE" PLEASE MAIL \$8.00 TO BOX 35, BROOKLYN 11, N. Y. AND THE GAME WILL BE MAILED TO YOU POSTPAID.
- PLAN TO SEE SAM.



MADE BY CARDINAL INDUSTRIES, BROOKLYN 11, N. Y.

League Leaders!

The Top Bourbon ... Like the Top Football Team ... has Quality!

J.W. DANT WORLD'S LARGEST SELLING BONDED BOURBON



Take your choice of the two Kentucky favorites—Dant 100 Proof Bottled in Bond or J. W. Dant 86 Proof ... its mild, light, lower-priced partner.

1961 NATIONAL LEAGUE LEADERS

Rushing	Taylor, Green Bay, 95 for 564 yds.
Passing	Jurgensen, Philadelphia, 85 of 150-1288 yds.
Receiving	Phillips, Los Angeles, 30 for 543 yds.
Scoring	Hornung, Green Bay, 92 pts.
Punting	Lary, Detroit, 47.7 avg.
Punt Returns	Wood, Green Bay, 7-176 yds.
Kick-Off Returns	Studstill, Detroit, 6-253 yds.
Interceptions	Sample, Pittsburgh, 8-141 yds.



Giant Close-Ups

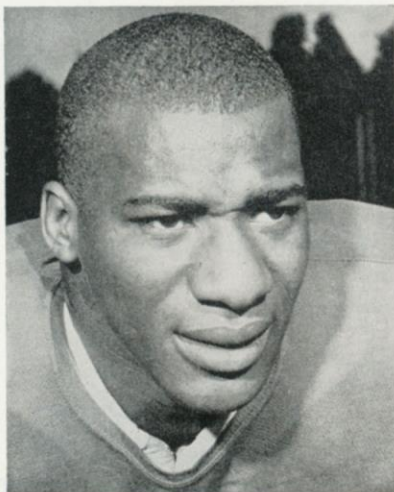


Dick Lynch

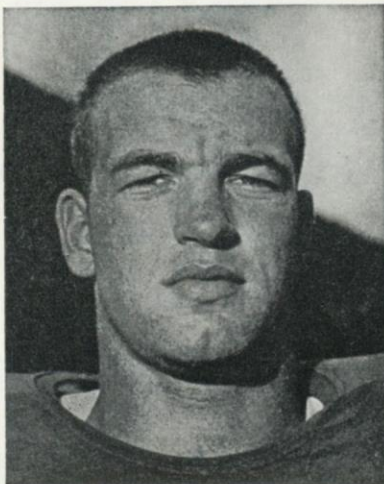
Tom Scott

Rugged, knowledgeable **Tom Scott (82)** fits into the Giant picture as an outside linebacker and spare end. An All-America at Virginia, Tom broke in with the Rams in 1953 but did most of his playing for the Eagles before being traded to the Giants in 1959 for Ken MacAfee and Gerry Huth. A regular for six years with the Eagles, he has taken over as first-string right-side linebacker with the Giants now that Swede Svarre has retired.

Dick Lynch (22) attained college fame by scoring the touchdown for Notre Dame that snapped Oklahoma's record 47-game winning streak in 1957. In the NFL, Dick is distinguishing himself equally as a defensive back. He joined the Giants via a spring 1959 trade after spending one season with Washington, and has done a whale of a job in the right corner spot of the defensive backfield. A native Long Islander, Dick lives in New York the year round.



Erich Barnes



Joe Morrison



Rosy Grier

A No. 4 1958 draft choice of the Bears, **Erich Barnes (49)** came to the Giants via a three-team deal that sent Landon Crow to Los Angeles. Barnes moved right into the defensive left halfback berth vacated by Crow. On the basis of what the fleet 198-pound Purdue graduate has shown to date, the Giants will stack him up against any man in the NFL at the position. Erich is a particularly adept pass-defender.

Joe Morrison (40) begins his third season with the Giants solidly established as the team's top all-purpose back. The 195-pound Cincinnati graduate, who does everything well, was slated to play on the wing in the revamped Giant attack. But he was moved back behind the ball when circumstances forced a change in plans. Joe was a No. 3 draft choice in 1959.

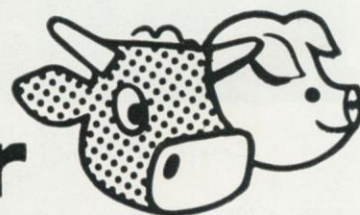
With one season out for military service, big **Rosy Grier (76)** has been a Giant defensive mainstay, at right tackle, since 1955. Although his 6 foot 5 inch frame is generously padded with 290 pounds, he is as quick as a cat on his feet. At Penn State, Rosy also was a champion shotputter and discus thrower. Off the field, he's beginning to make his mark as a singer and has cut several successful records.



"THESE FRANKFURTS ARE HICKORY SMOKED!"

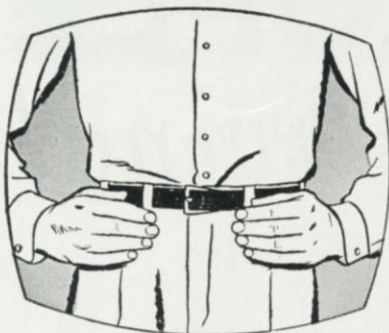
Enjoy 'em at home, the circus, the football field, *everywhere!*
Take your choice—regular or all-beef franks—both are *all meat!* Both deliciously hickory-smoked! Available in jars and cellophane, too. By famous...

Stahl-Meyer

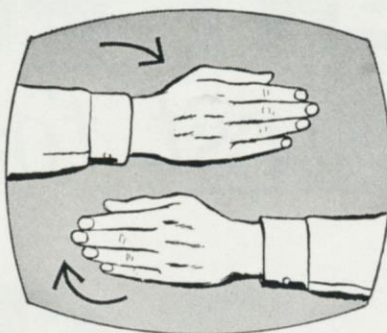


FAMOUS FERRIS HICKORY SMOKED CANNED HAM AND FERRIS BACON ARE TWO MORE FINE PRODUCTS MANUFACTURED AND KITCHEN TESTED BY STAHL-MEYER INC.

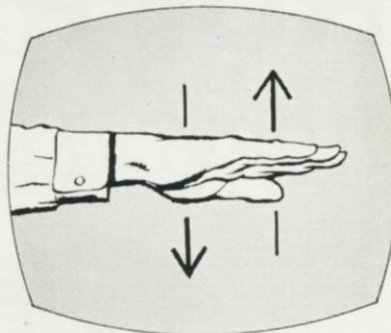
DO YOU KNOW YOUR SIGNS?



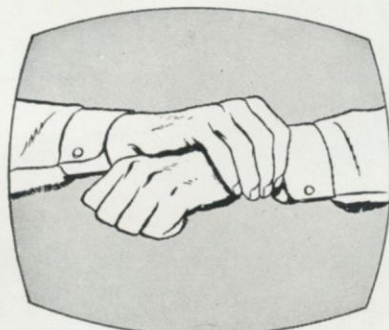
Arms akimbo signal flashed to indicate team off-side.



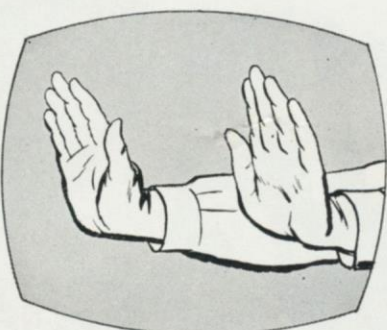
Signal used for illegal position or procedure.



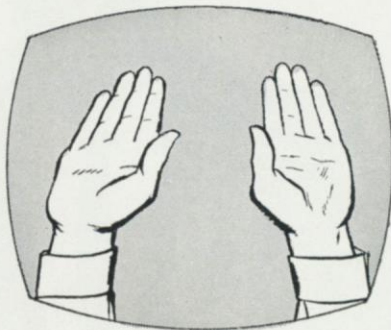
Official indicates player is charged with personal foul.



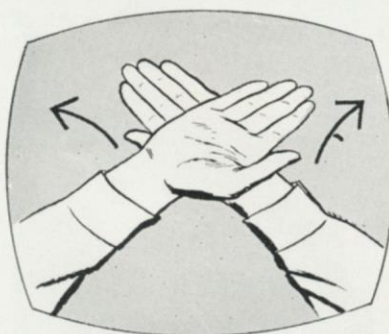
This signal means illegal use of hands or arms.



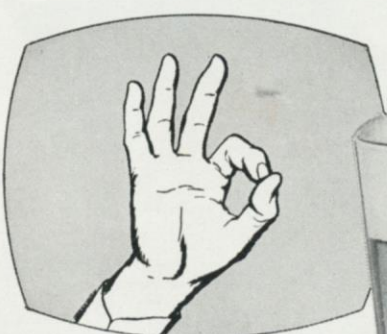
Signal for forward pass or kick catching interference.



Familiar signal for touch-down or field goal.



Team — or official — calls for time out.



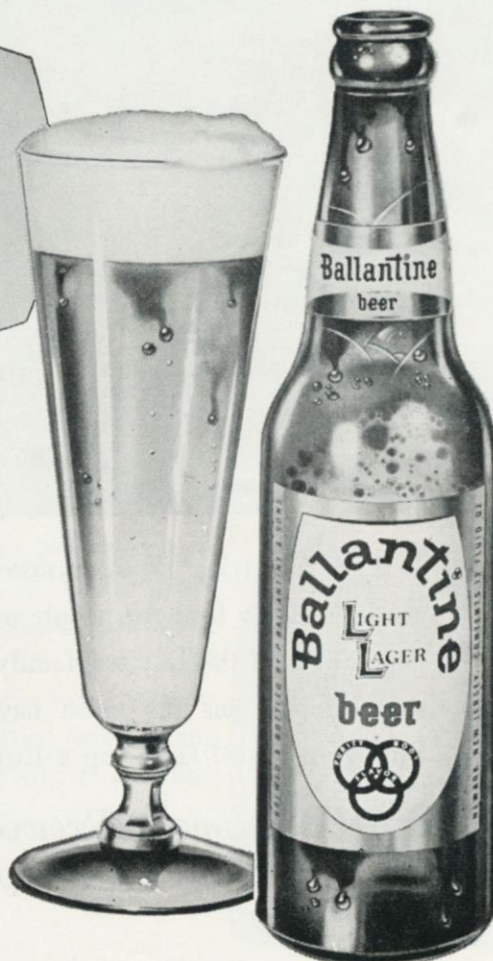
Fan calls for Ballantine beer—the 'crisp' refresher!

Ask the man for
Ballantine beer

SEE WHY OVER 5 MILLION GLASSES ARE ENJOYED EVERY DAY BY PEOPLE WHO KNOW QUALITY WHEN THEY TASTE IT!



P. BALLANTINE & SONS, NEWARK, N. J.



RUPPERT PEOPLE

have a thirst for living!



A *thirst* for living means a *taste* for Ruppert! Ruppert is the light lively beer for people who live livelier lives. Four generations of the Ruppert family have seen to it *personally* that Ruppert has the finest flavor your money can buy. So live a little! Open up a Ruppert and swallow deep.

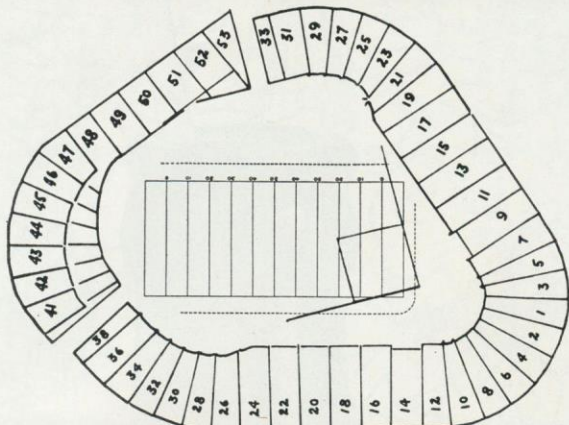
Have a Ruppert! Brewed since 1867 by four generations of the Ruppert family!



*Bright
new
label...
same
fine
Ruppert!*

© 1960, JACOB RUPPERT, NEW YORK CITY

Yankee Stadium Services & Facilities



LOST AND FOUND—Direct inquiries and reports to Jack White, the Stadium Superintendent. Any attendant will direct you to his office.

REST ROOMS—**Men:** Gate 2, Press Gate, Stadium Club (lower, upper), Gate 6; Lower Sections 34, 8, 6, 15, 21, 27; Mezzanine Sections 27, 15, 5, 18, 28; Upper Sections 34, 20, 6, 15, 21; Bleacher Sections 43, 47, 52. **Women:** Gate 2, Gate 4, Stadium Club (lower, upper), Gate 6; Lower Sections 28, 20, 5, 15, 27; Mezzanine Sections 21, 15, 6, 18, 34; Upper Sections 28, 20, 5, 15, 29; Bleacher Sections 47, 52.

PUBLIC TELEPHONES—Gate 2, Gate 4, Press Gate, Stadium Club (lower, upper), Gate 6, Lower Sections 24, 14, 12, 11, 17, 27; Mezzanine Sections 27, 17, 7, 8, 22; Upper Sections 34, 20, 12, 8, 9, 19, 27; Bleacher Sections 41, 49, 51.

PARKING AREAS

YANKEE LOTS

South side 157th St., Ruppert Pl. to Cromwell Ave.
Between Cromwell and River Aves., on 153rd St.
163rd to 164th Sts., between River and Gerard Aves.
151st St. and River Ave., opposite Bronx County Jail.

PRIVATELY-OWNED LOTS

West side Ruppert Pl., between 157th and 158th Sts.
West side River Ave., between 151st and 153rd Sts.
West side River Ave. and 157th St.
East side River Ave., North of 153rd St.
East side River Ave., North of 151st St.
East side River Ave., 164th to 165th Sts.
East side River Ave., South of 162nd St.
Farmer's Square—Cromwell Ave. Roadway, and
West of 151st St. Viaduct, opposite Bronx County Jail.
East 168th St. and River Ave.

GARAGES

Cromwell Ave. and 157th St.
East side of River Ave., South side of 158th St.
East side of River Ave., North side of 157th St.
East side of River Ave., South side of 157th St.
North side of 158th St., between River and Gerard Aves.
East side of River Ave., corner of 168th St.

Also, the Polo Grounds lot again will be in service for all Giant games at the Stadium.

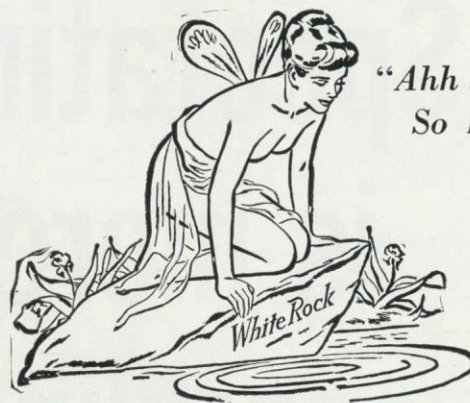
SOUVENIR PRICE LIST

PICTURES (12 Players)25
PAST AND PRESENT PICTURES (36 Players)50
PENNANT (Large)	1.00
LUCKY MASCOT (Action Doll)	1.00
KNITTED HAT (Colors)	1.50
OFFICIAL TYPE HELMET (All Sizes)	5.00

Souvenir Stands located at Gates 2, 4, 6; Lower Sections 7, 14; Bleacher Sections 43, 50.

These items also are available by mail from Harry M. Stevens, Inc., Souvenir Department, Yankee Stadium, Bronx 51, N. Y.

SEASON AFTER SEASON...



"Ahh ...
So Pure!"

She's New York's Best Girl!

White Rock

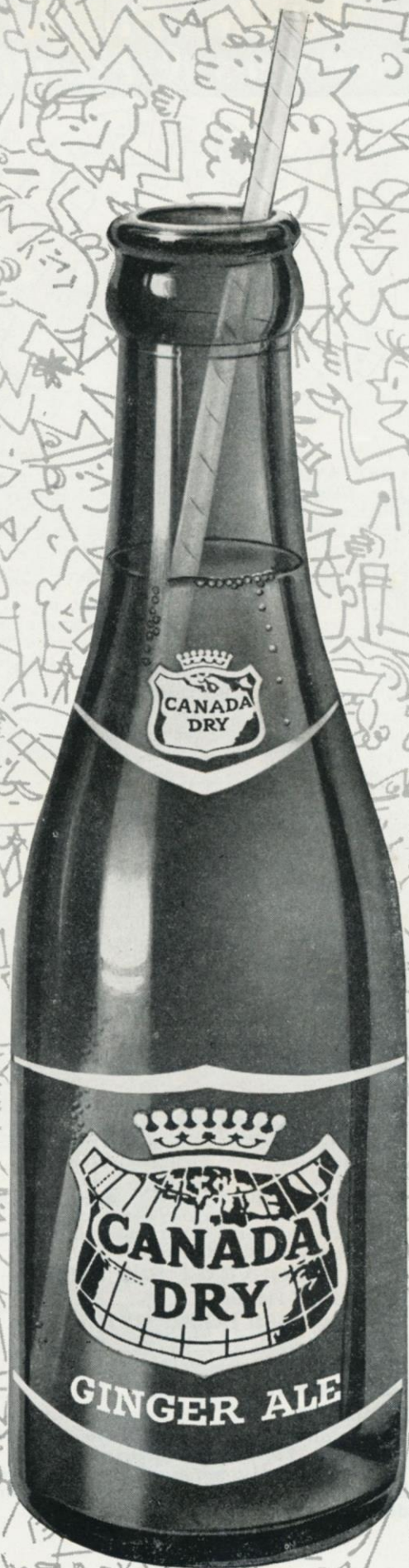
for sparkling fine beverages

The White Rock Girl stays so popular because the brand she represents satisfies so completely! Thanks to *Superior carbonation*, a White Rock drink keeps sparkling from the first pour to the last sip. So for a lighter-livelier drink every time, don't just mix it ... *White Rock it!*



Spectating is more sparkling ...with Canada Dry Ginger Ale...

**So is socializing after the game
with Canada Dry Ginger Ale
in your tall drinks.**



NFL Officials' Signals



Offside



Crawling, Pushing,
Helping Runner



Illegal Motion



Illegal Pass



Unsportsmanlike
Conduct



Pass Interference



Holding, Illegal
Use of Hands



Personal Foul
(indication of
offense follows)



Delay of Game,
Excess Time-Out



Touchdown, Field
Goal, Extra Point



Safety



Loss of Down



Penalty Declined,
Incomplete Pass,
Missed Goal



First Down



Dead Ball



No Time-Out or
Time In with Whistle



Time-Out

Enjoy
MELROSE
Whiskey Born Great!



"A Toast to Greatness"

There's royal pleasure for you in Melrose . . . an incredibly smooth blend selected from our treasured reserves. Rich and mellow—yet light and appealing. Tonight, make yours MELROSE—the toast to greatness.



SUPERLATIVE BLENDED WHISKEY, 86 PROOF, 65% GRAIN NEUTRAL SPIRITS, MELROSE DISTILLERS CO., NEW YORK, N. Y.

NFL Pairings and Results

Home Team NEW YORK

vs.

Visiting Team DALLAS

Won 5, Lost 1

Won 3, Lost 3

10—at St. Louis	21	27—Pittsburgh	24
17—at Pittsburgh	14	21—Minnesota	7
24—at Washington	21	7—at Cleveland	25
24—at St. Louis	9	28—at Minnesota	0
31—at Dallas	10	10—New York	31
24—Los Angeles	14	7—Philadelphia	43
—Dallas	—	—at New York	—
—Washington	—	—St. Louis	—
—Philadelphia	—	—at Pittsburgh	—
—Pittsburgh	—	—Washington	—
—at Cleveland	—	—at Philadelphia	—
—Green Bay at Milw.	—	—Cleveland	—
—at Philadelphia	—	—at St. Louis	—
—Cleveland	—	—at Washington	—

130 89 100 130

ST. LOUIS

vs.

CLEVELAND

Won 3, Lost 3

Won 4, Lost 2

21—at New York	10	20—at Philadelphia	27
17—at Cleveland	20	20—St. Louis	17
30—at Philadelphia	27	25—Dallas	7
9—New York	24	31—Washington	7
7—Philadelphia	20	17—Green Bay	49
24—at Washington	0	30—at Pittsburgh	28
—Cleveland	—	—at St. Louis	—
—at Dallas	—	—Pittsburgh	—
—Detroit	—	—at Washington	—
—at Baltimore	—	—Philadelphia	—
—at Pittsburgh	—	—New York	—
—Washington	—	—at Dallas	—
—Dallas	—	—at Chicago	—
—Pittsburgh	—	—at New York	—

108 101 143 135

PITTSBURGH

vs.

SAN FRANCISCO

Won 1, Lost 5

Won 4, Lost 2

24—at Dallas	27	35—Washington	3
14—New York	17	10—at Green Bay	30
14—at Los Angeles	24	49—at Detroit	0
16—at Philadelphia	21	35—Los Angeles	0
20—Washington	0	38—at Minnesota	24
28—Cleveland	30	0—at Chicago	31
—San Francisco	—	—at Pittsburgh	—
—at Cleveland	—	—Detroit	—
—Dallas	—	—at Los Angeles	—
—at New York	—	—Chicago	—
—St. Louis	—	—Minnesota	—
—Philadelphia	—	—at Baltimore	—
—at Washington	—	—Green Bay	—
—at St. Louis	—	—Baltimore	—

116 119 167 88

NATIONAL LEAGUE STANDING

EASTERN CONFERENCE

	W.	L.	T.	Pct.	Pts.	O.P.
NEW YORK	5	1	0	.833	130	89
Philadelphia	5	1	0	.833	152	87
Cleveland	4	2	0	.667	143	135
Dallas	3	3	0	.500	100	130
St. Louis	3	3	0	.500	108	101
Pittsburgh	1	5	0	.167	116	119
Washington	0	6	0	.000	38	148

WESTERN CONFERENCE

Green Bay	5	1	0	.833	194	58
Chicago	4	2	0	.667	120	105
San Francisco	4	2	0	.667	167	88
Baltimore	3	3	0	.500	110	156
Detroit	3	3	0	.500	78	138
Los Angeles	1	5	0	.167	92	135
Minnesota	1	5	0	.167	108	167

Home Team WASHINGTON

vs.

Visiting Team PHILADELPHIA

Won 0, Lost 6

Won 5, Lost 1

3—at San Francisco	35	27—Cleveland	20
7—at Philadelphia	14	14—Washington	7
21—New York	24	27—St. Louis	30
7—at Cleveland	31	21—Pittsburgh	16
0—at Pittsburgh	20	20—at St. Louis	7
0—St. Louis	24	43—at Dallas	7
—Philadelphia	—	—at Washington	—
—at New York	—	—Chicago	—
—Cleveland	—	—at New York	—
—at Dallas	—	—at Cleveland	—
—Baltimore	—	—Dallas	—
—at St. Louis	—	—at Pittsburgh	—
—Pittsburgh	—	—New York	—
—Dallas	—	—at Detroit	—

38 148 152 87

BALTIMORE

vs.

CHICAGO

Won 3, Lost 3

Won 4, Lost 2

27—Los Angeles	24	13—at Minnesota	37
15—Detroit	16	21—at Los Angeles	17
34—Minnesota	33	0—at Green Bay	24
7—at Green Bay	45	31—at Detroit	17
10—at Chicago	24	24—Baltimore	10
17—at Detroit	14	31—San Francisco	0
—Chicago	—	—at Baltimore	—
—Green Bay	—	—at Philadelphia	—
—at Minnesota	—	—Green Bay	—
—St. Louis	—	—at San Francisco	—
—at Washington	—	—Los Angeles	—
—San Francisco	—	—Detroit	—
—at Los Angeles	—	—Cleveland	—
—at San Francisco	—	—Minnesota	—

110 156 120 105

LOS ANGELES

vs.

DETROIT

Won 1, Lost 5

Won 3, Lost 3

24—at Baltimore	27	17—Green Bay at Milw.	13
17—Chicago	21	16—at Baltimore	15
24—Pittsburgh	14	0—San Francisco	49
0—at San Francisco	35	17—Chicago	31
13—at Detroit	14	14—Los Angeles	13
14—at New York	24	14—Baltimore	17
—Detroit	—	—at Los Angeles	—
—Minnesota	—	—at San Francisco	—
—San Francisco	—	—at St. Louis	—
—at Green Bay	—	—at Minnesota	—
—at Chicago	—	—Green Bay	—
—at Minnesota	—	—at Chicago	—
—Baltimore	—	—Minnesota	—
—Green Bay	—	—Philadelphia	—

92 135 78 138

GREEN BAY

vs.

MINNESOTA

Won 5, Lost 1

Won 1, Lost 5

13—Detroit at Milw.	17	37—Chicago	13
30—San Francisco	10	7—at Dallas	21
24—Chicago	0	33—at Baltimore	34
45—Baltimore	7	0—Dallas	28
49—at Cleveland	17	24—San Francisco	38
33—at Minnesota	7	7—Green Bay	33
—Minnesota at Milw.	—	—Green Bay at Milw.	—
—at Baltimore	—	—at Los Angeles	—
—at Chicago	—	—Baltimore	—
—Los Angeles	—	—Detroit	—
—at Detroit	—	—at San Francisco	—
—New York at Milw.	—	—Los Angeles	—
—at San Francisco	—	—at Detroit	—
—at Los Angeles	—	—at Chicago	—

194 58 108 167

Robert W. Kelly Publishing Corp.



86

PLEASE USE ENTRANCE RAMP NEAREST YOUR SEAT



Let the winning taste of Seagram's 7 Crown bring its own special satisfaction to a great Autumn day. After the game, say Seagram's and be Sure.

If you smoke for pleasure, not just from habit, discover the great taste of great tobaccos in Chesterfield King. Twenty-one vintage tobaccos are grown mild . . . aged mild . . . blended mild—not filtered mild—to be so truly satisfying. Your pleasure's long and true and filter-free. No wonder "They Satisfy."

21
GREAT
TOBACCOS
make
20
WONDERFUL
SMOKES!

They Satisfy!



THE SAME GREAT TOBACCOS ARE IN BOTH REGULAR CHESTERFIELD AND CHESTERFIELD KING