

OFFICIAL PROGRAM • 50 CENTS

# YANKEE STADIUM



N.Y.

GIANTS

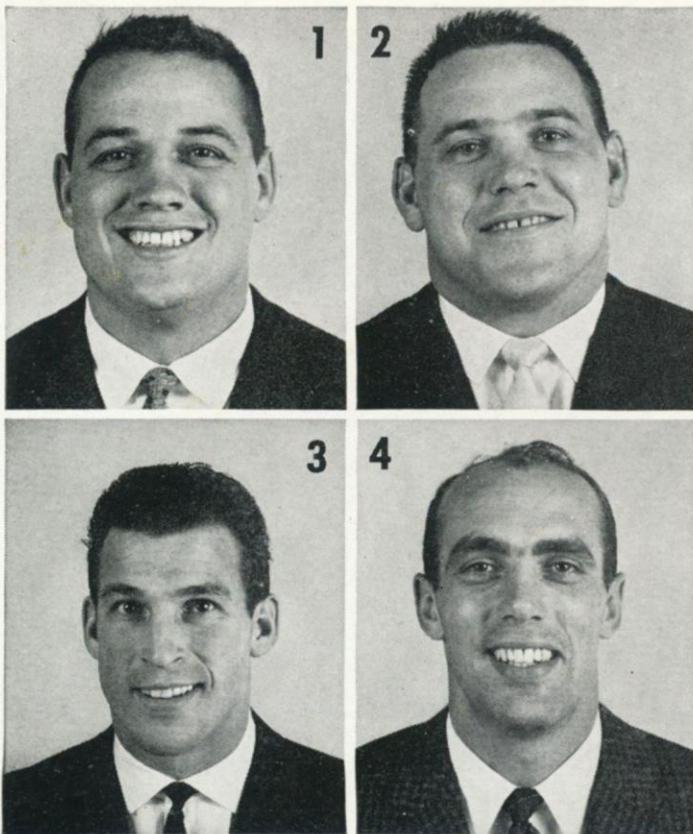
VS.

PHILADELPHIA

# EAGLES

NOVEMBER 12, 1961





# Do you recognize these Marlboro men?

*You should ...  
they're all N. Y. Giants  
—past or present*



You'll probably recognize Mister "42"—his picture is in just about every Marlboro advertisement you see these days.

One of them is a famous fullback from the prewar days. Remember?

The other four Giants are on the Marlboro team, too. Off-season, they travel all over the country, making new friends for this famous cigarette.

Speaking of new friends, more than 25,000 smokers are switching to Marlboro every month. The reason, of course, is *flavor*. It's the filter cigarette with the unfiltered taste.

Try today's Marlboro and judge for yourself.



See 8 of the all-time football greats in our Marlboro commercials. This fall, Marlboro is again sponsoring the NFL Pro Football telecasts. Don't miss the commercials—Ken Strong, Charley Conerly, Paul Hornung, Johnny Lujack, Bobby Layne, Jon Arnett, Don Hutson and Frankie Albert will be reliving highlights of their great careers.

You get a lot to like with a **Marlboro**

Answers:

1. Sam Huff
2. Dick Modzelewski
3. Jim Patton
4. Don Chandler
5. Ken Strong
6. Charley Conerly



**NEW**

**PAL®**

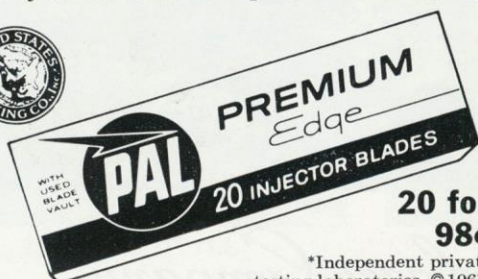
**PREMIUM INJECTOR BLADES**

**TAKE FRICTION OUT OF SHAVING...  
PUT COMFORT IN!**



New Pal® Premium blade's *extra* sharp edge rides on a microscopic film of liquid ball bearings. This combination of *extra* sharpness and invisible liquid ball bearings makes new Pal blades as friction-free as a blade can be—takes friction out of shaving, puts comfort in. Pal Premium blades fit all injector razors. Shave with them soon. Your favorite store carries them.

United States Testing Company\* certifies: Pal Premium Injector Blades . . . best buy for combined sharpness and durability.



**20 for  
98¢**

\*Independent private testing laboratories. ©1961, American Safety Razor Company, a division of Philip Morris, Inc.

**OFFICIAL PROGRAM**

# NEW YORK GIANTS



**vs. PHILADELPHIA EAGLES**

**YANKEE STADIUM • Nov. 12, 1961**

**Volume 37**

**Number 5**

## CONTENTS

Schedule Tough?	3
Before the Battle	5
Giant Close-Ups	7 and 11
Steelers Here Next Sunday	9
Giant Jottings	13
Giants-Eagles Series Review	15
Giant Statistics	17
Giant Roster and Line-Ups	18
Eagles Roster and Line-Ups	19
Looking over the Eagles	21
Eagle Stars	23
NFL News and Notes; NFL Leaders	25
Giant Blackboard: Weak-Side Play	27
Yankee Stadium Services	33
NFL Officials' Signals	35
NFL Pairings and Results	36

## New York Football Giants

JOHN V. MARA	President
WELLINGTON T. MARA	Vice-President
TIMOTHY J. MARA	Secretary-Treasurer
RAYMOND J. WALSH	Business Manager
AL SHERMAN	Head Coach
JIM LEE HOWELL	Director of Personnel
HARLAND SVARE	Defensive Coach
ANDY ROBUSTELLI	Assistant Defensive Coach
JIM PATTON	Assistant Defensive Coach
ED KOLMAN	Line Coach
KEN KAVANAUGH	End Coach
DON HEINRICH	Backfield Coach
JOHN JOHNSON, SID MORET and JOHN DZIEGIEL	Trainers
DR. FRANCIS SWEENEY	Physician
DR. ARTHUR CROKER	Dentist
DON SMITH	Director of Publicity
DAN RUBIN	Photographer

Cover Illustration by Carol Johnson

This book published by  
**HARRY M. STEVENS, Inc.**  
320 Fifth Avenue  
New York 1, N. Y.



# Quality



Products of *The American Tobacco Company*

"Tobacco IS OUR MIDDLE NAME"



# Schedule Tough? Yes, But Giants Can Be Tough, Too



Coach Allie Sherman and defensive captain Andy Robustelli size up things from the sideline.

**T**HE Giants get a chance to grab at the brass ring today. A victory over the Eagles would put them all square with the 1960 world champions with five games remaining on each club's schedule.

Today and for the rest of the way, the going will be tough. The Giants must play still another game with the Eagles, one with the Packers, two with the Browns and one with the Steelers.

But Coach Allie Sherman and his squad hardly could ask for more than this good shot at the Eastern title they now are getting by virtue of their better-than-expected showing over the first half of the campaign.

"Sure, the rest of the schedule is tough. But, as far as we're concerned, all games in this league are tough. The idea of facing the Eagles, Packers, Browns and Steelers doesn't bother us. In fact,

I'm looking for it to make us reach and play that much better."

That's how Sherman and the Giants view the situation.

It would be fatuous to predict that the Giants will sweep all before them from here on in. The opposition is too formidable to take so rash a stand.

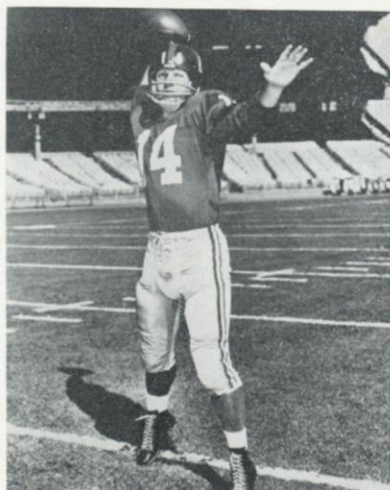
But there is an optimistic angle: this 1961 Giant team has yet to tap its full potential. It showed some of that potential last Sunday in the 53-0 rout of the Redskins.

"For the first time, we put things together and really looked like a football team," said Sherman, afterward. "But while we did many things well, there still are a lot we could do better. Somewhere along the line, we hope to get all the pieces to fall into place."

Along with the passing of Y. A. Tittle, the pass-catching of Del Shofner and Kyle Rote, the good line blocking and the devastating work of the defensive unit, the most pleasing aspects of the decisive triumph over the Redskins was the progress registered by Giants' younger players.

Bob Gaiters had his best home game and Joel Wells and Allan Webb provided further running support for the doughty Alex Webster, who has had to carry the chief burden for much of the season. Then there was the heart-warming performance of Lee Grosscup, who had been chafing at the bit waiting for his chance.

If the Giants continue to improve the way they have been improving, they'll be rough, tough opponents for the rough, tough opponents they face in the race down the stretch.



Y. A. TITTLE



BOB GAITERS



DEL SHOFNER

PLEASE USE ENTRANCE RAMP NEAREST YOUR SEAT





## ***RARE NEW SPECIES FOR 'BIRD WATCHERS***

A hitherto unknown species, the double-crested North American Thunderbird (var., Sports Roadster) has been sighted recently by alert 'Bird watchers. Even more brilliant than the more familiar Thunderbird, it can be recognized by a smooth tonneau cover with twin slip-stream headrests that present a virtually unbroken line to the tail, and by the flash of chrome wire wheels when in flight. Migratory by nature, it is a remarkable traveler and has been reported from Palm Beach to Palm Springs and from Canadian mountain passes to Southern resorts. Its usual habitat seems to be country club lawns, lake shores near regattas, the parking lots of smart restaurants, and other areas where unusual excitement and pleasure may be found. It can soar effortlessly for hours, covering immense distances. This new species cannot be caged but is easily domesticated, answering its master with the instant and proper obedience that is characteristic of all Thunderbirds.



***THUNDERBIRD '62***



# Before the Battle

Photographer Ken Regan covers the Giant dressing room.



Pete Previte and Pete Sheehy, the Giants' stalwart clubhouse team, make a pre-game security check of equipment.



End coach Ken Kavanaugh and Kyle Rote review pass-patterns.



Trainer Johnny Johnson gets Sam Huff ready for violence, as assistant trainer Vinnie Swerc looks on approvingly.



Trainer Sid Moret tapes Joe Morrison. Trainer Johnny Dziegiel will wait on the next customer.



Don Chandler, model punter, models the latest in football hose.



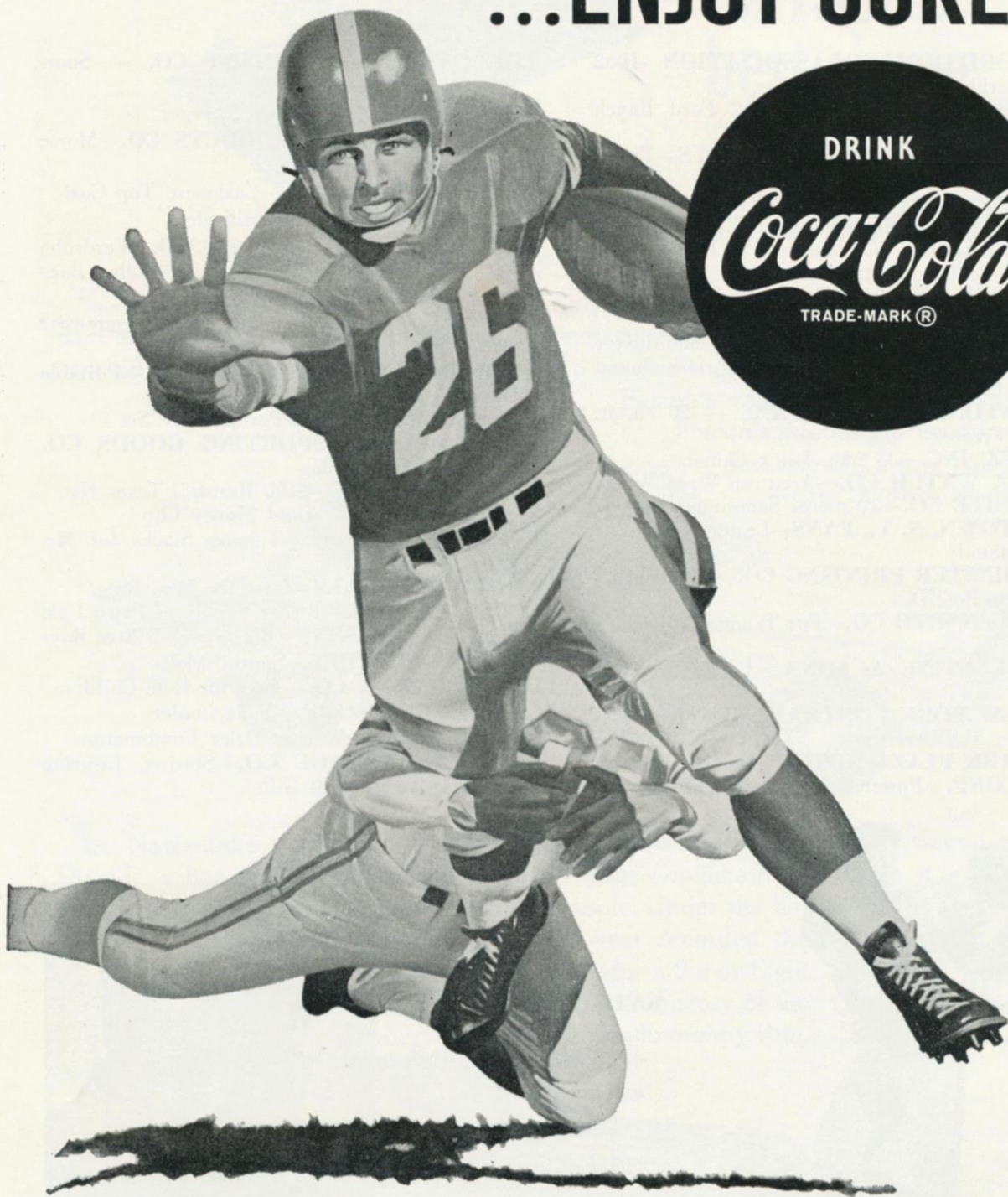
Linebacker Cliff Livingston dons his armor.



Charlie Conerly, an early dresser, has time to read the program.

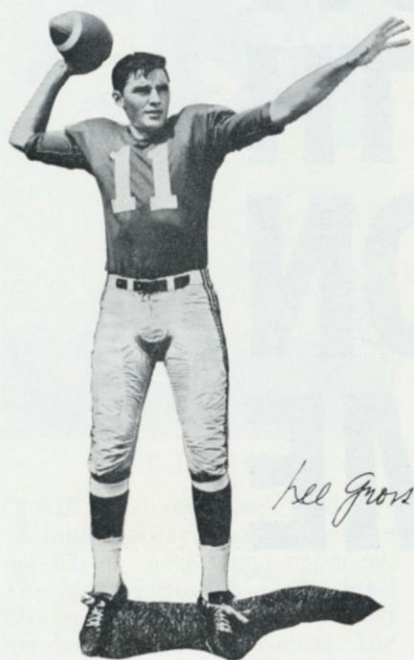


**BE REALLY REFRESHED!**  
**...ENJOY COKE!**





# Giant Close-Ups



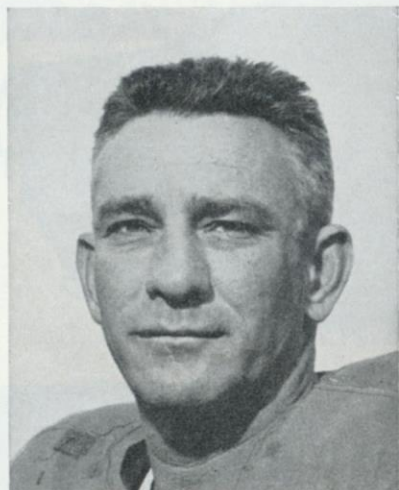
*Lee Grosscup*



*Greg Larson*

**Lee Grosscup (11)** begins his second official season with the Giants a long step closer toward being a well-rounded pro quarterback. The Giants drafted him No. 1 in 1959, trained him on their taxi squad that year and put him to work on a limited basis in 1960. One of the nation's top passers at Utah, Lee rates high in the Giants' future plans.

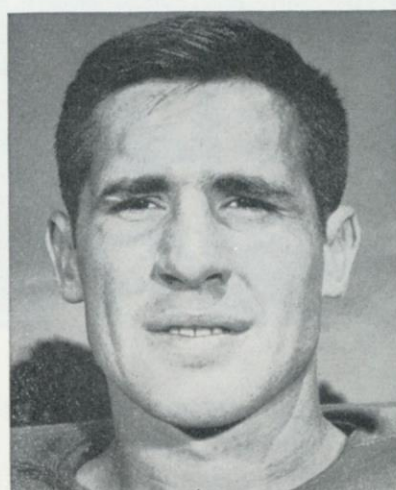
**Greg Larson (53)**, who played center on Minnesota's national collegiate champions of 1960, is one of the best-endowed rookie linemen the Giants have signed in years. The 6 foot 3 inch, 240-pound Golden Gopher stood in brilliantly for Ray Wietecha in a couple of pre-season games and more lately has taken over at offensive right tackle. Greg has all the attributes to become an NFL star.



*Charlie Conerly*



*Alex Webster*



*Bob Simms*

Although at 40, **Charlie Conerly (42)** is the oldest active player in the NFL, his zest for combat remains undiminished. This great, game performer has been the key cog in the Giant attack since 1948. His 1,374 pass completions have been good for 18,854 yards and 166 touchdowns. In addition, his inspirational value has been incalculable. The Ole Man from Ole Miss is one of the all-time greats.

One of the brightest Giant developments to date has been the apparent return of **Alex Webster (29)** to his former effectiveness as a running back after two injury-ridden seasons. When sound, Alex has few peers at getting the last inch a play has to offer. He was one of the Giants' prime movers on attack from 1955 through 1958. A North Carolina State product, Webster came to the Giants via Canada.

**Bob Simms (83)**, a Rutgers contribution to the Giants, has been cast in a new role this season. Used at offensive end as a 1960 rookie, he has been shifted to linebacker. Six-foot-two, 215 pounds and highly mobile, he has been shaping up well and his new post and figures to see a lot of service at the corners. Bob also is a key member of the various special units. He is a hard-hitting blocker and tackler.



# FILL YOUR TANK WITH CHEVRON SUPREME



You're always welcome at the Chevron Supreme pump — no matter what you drive! Chevron Supreme brings out the best in cars — particularly those with modern high-compression engines. It delivers all the power and mileage built into these engines. Makes 'em lively and keeps 'em lively. And right next to the Chevron Supreme pump, you'll find RPM Motor Oils . . . the only complete line of oils with ashless detergent! Could you ask for anything more? No. Because you never have to ask for the one other thing you want . . . that superb Chevron service!

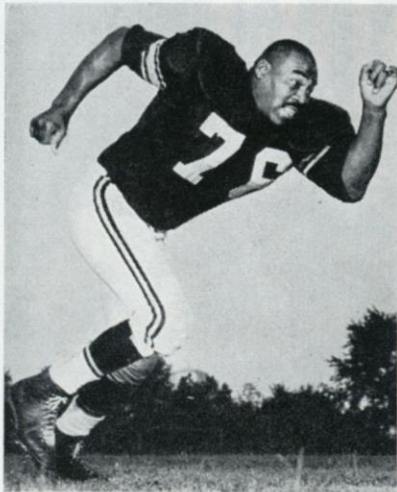
***At the sign of the CHEVRON,  
we take better care of your car.***



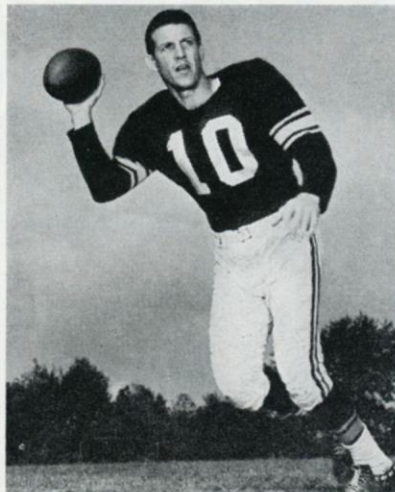
PRODUCTS OF CALIFORNIA OIL COMPANY



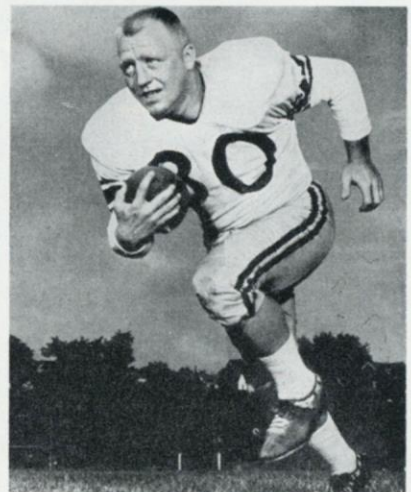
# Steelers Here Next Sunday



**GENE LIPSCOMB**



**RUDY BUKICH**



**TOM TRACY**

**T**HE Pittsburgh Steelers, always tough, always rugged, will be the Giants' next home opponent. The Men of Steel from the Steel City will be at the Stadium next Sunday. It's a return contest. The Giants edged the Steelers, 17-14, in a cliff-hanger at Pittsburgh.

Bobby Layne, the Steelers' great quarterback, got racked up in that game and his status remains in doubt. But Coach Buddy Parker has been getting good per-

formance under center from Rudy Bukich, an experienced replacement, so Layne has not been missed too much. At last look, Rudy had a .595 average.

Pittsburgh has swift receivers in Buddy Dial, Preston Carpenter and the rookies, Red Mack and Dick Hoak. There's also plenty of speed in the Steeler backfield. Tom Tracy, a nemesis of the Giants over the years, John Henry Johnson, Charlie Scales and Brady

Keys all can carry the mail.

The defensive unit, weak in 1960, has been refurbished. Big Daddy Lipscomb and Lou Michaels lend added muscle to the rushline. The rookie Mike Pottios has perked up the linebacking corps. Johnny Sample has improved the deep secondary.

Don't miss this one—especially since the Giants won't be home again until their finale against the Browns on Dec. 17.

## COMING GIANT ATTRACTIONS AT STADIUM

### TICKET PRICES

**\$5.00** BOX SEATS

**\$4.00** RESERVED SEATS

### Where to Buy Tickets in Person

**YANKEE STADIUM**  
161st St. and River Ave.  
Bronx, N. Y.  
Mon.-Sat. 9-5 P.M.

**YANKEE TICKET OFFICE**  
North Mezzanine  
Grand Central Station  
Mon.-Fri., 10-6 P.M.; Sat., 10-4

or

### DAVEGA STORES

Hackensack—325 Main Street

Newark—110 Market Street

also

**ANDY ROBUSTELLI'S SPORTS SHOP**  
in Stamford, Conn.

### Address Mail Orders to:

**TICKET MANAGER NEW YORK FOOTBALL GIANTS**  
10 Columbus Circle  
New York 19, N. Y.

(Add 50c for mailing and handling)

Make certified check or money order payable:  
**NEW YORK FOOTBALL GIANTS, INC.**

**Tickets Now on Sale at Advance Sale Windows in Main Lobby of Stadium**

GAME

**6**

NOV. 19

**PITTSBURGH STEELERS**

with Rudy Bukich  
Tom Tracy and  
John Henry Johnson

GAME

**7**

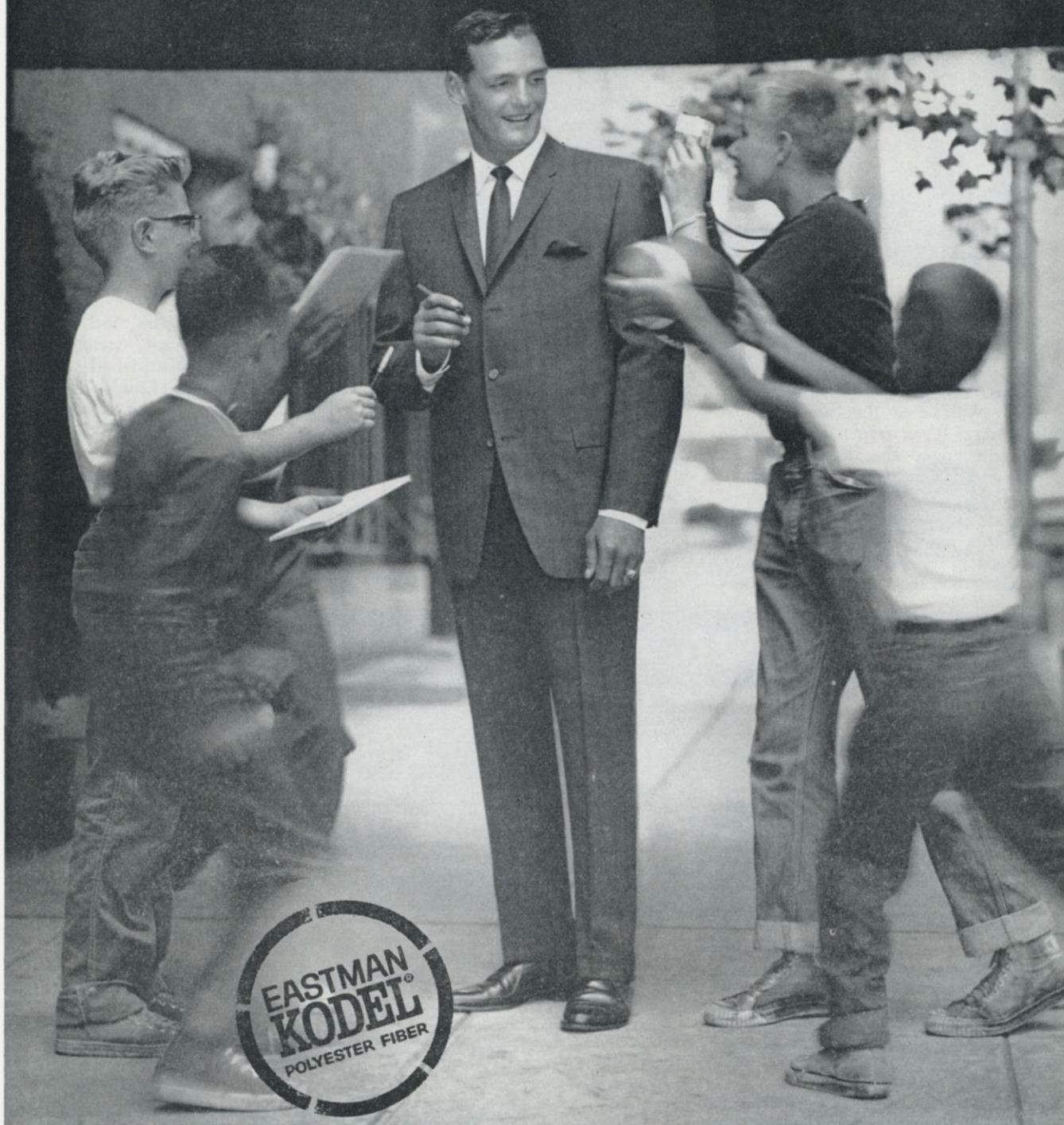
DEC. 17

**CLEVELAND BROWNS**

with Jimmy Brown, Ray  
Renfro and Milt Plum



# score with KODEL



N. Y. Giants pro football star Dick Lynch has to look good off the gridiron, too. He's for Kodel. This stay-fresh polyester fiber has put first-string crispness and comfort into men's wear. You'll find Kodel in suits, slacks, shirts, ties, rainwear, topcoats . . . in all the clothes that make for America's best-pressed men.

Kodel is the trademark for Eastman polyester fiber. Only the fiber is made by Eastman, not fabrics or clothing.

EASTMAN CHEMICAL PRODUCTS, INC., subsidiary of Eastman Kodak Company, 260 MADISON AVENUE, NEW YORK 16

Headquarters for men's wear  
blended with Kodel

**JOHN DAVID**  
fifth avenue new york

New York — White Plains — Washington



# Giant Close-Ups



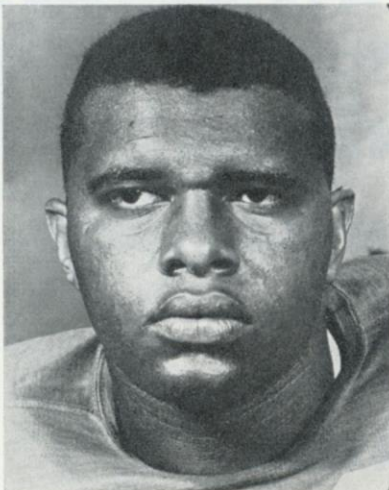
*Larry Hayes*



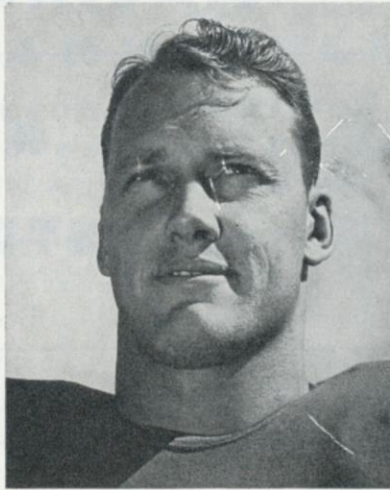
*Joel Wells*

The Giants, who have had good luck over the years with free agents, signed **Larry Hayes (52)** on that basis this season and are happy with the results. The 230-pound Vanderbilt graduate made the team as a spare linebacker and special unit man. A teammate of Phil King at Vanderbilt, Larry put in three seasons in Canada.

Mindful of the success they have had with Alex Webster, the Giants reached North of the Border again last winter to enlist another vaunted Canadian League running back. That's **Joel Wells (28)**, a husky 200-pounder who starred three years for the Montreal Alouettes. A Clemson graduate, Wells was a No. 2 draft choice of the Packers in 1957. Joel looks to have the stuff to make it in the NFL.



*Charlie Janerette*



*Jack Stroud*



*Dick Modzelewski*

The Giants believe they have come up with a major new addition in **Charlie Janerette (72)**. They obtained the 255-pound Philadelphian in a pre-season deal with Minnesota, which had acquired him from Los Angeles. A fifth draft choice of the Rams in 1960, Janerette made the team but did not play much. He's slated to see plenty of action with the Giants as a swing tackle. Penn State was Charlie's college.

**Jack Stroud (66)**, now in his ninth year with the Giants, has been a mainstay of the offensive line since 1953. There are few better running guards in the business and, although relatively light at 235 pounds, he also does a bang-up job at tackle. Handicapped by knee injuries in 1957 and 1958, Jack made a complete recovery and had peak years in 1959 and 1960. He won

Since 1956, the pile-driving thrusts at opposing lines by **Dick Modzelewski (77)** have been a distinguishing feature of the destructive Giant defense. Little Mo, all 260 pounds of him, plays football with a controlled fury that is almost terrifying. After starring at Maryland, he was drafted No. 2 by Washington in 1953, moved to Pittsburgh in 1955 and thence to the Giants. This is his ninth NFL season.



# MADISON SQ GARDEN

THIS WEEK'S  
SPORTS CALENDAR

## HOCKEY



Tonight  
7 PM

**RANGERS**  
vs  
**CHICAGO**

## BASKETBALL

Doubleheader  
Tuesday 7 PM

**KNICKS** vs  
**PHILA. WARRIORS**

**SYRACUSE** vs  
**CINCINNATI ROYALS**



Friday  
7:30

**KNICKS**  
vs  
**BOSTON CELTICS**

## HOCKEY

Saturday Aft.  
2 PM

**RANGERS**  
vs  
**MONTREAL**

Next Sunday

**RANGERS** vs **TORONTO**



# Giant Jottings

**T**HE 53-0 score the Giants rolled up on the Redskins last Sunday was the second highest in their 37-year history, exceeded only by a 56-0 thumping of the Eagles in 1933. . . . Bob Gaiters and Jim Katcavage were the winners of the sports clothes wardrobes, awarded at each Giant home game by the J. P. Stevens Co. to the outstanding performers on offense and defense. . . . For the first time last weekend, the Giants isolated themselves before a home game. The squad spent Saturday night at a downtown hotel and had dinner and Sunday breakfast as a group. "We wanted to get clear of the distractions that come up at home and also foster togetherness," explained Coach Allie Sherman. The reaction was so favorable that the plan will be continued and may become a permanent part of the Giant way-of-life.

All reserved tickets for today's game with the Eagles were disposed of more than two weeks ago. . . . After their Stadium contest with the Steelers next Sunday, the Giants will successively visit Cleveland, Milwaukee (for a game with the Packers) and Philadelphia before returning home to close their campaign against the Browns on Dec. 17. . . . The Giants have five ten-year pros on their roster, as follows: Charlie Conerly, 14 seasons; Kyle Rote and Andy Robustelli, 11 each, and Y. A. Tittle and Pat Summerall, 10 each.

The Giants have established an incentive program of cash awards for players who distinguish themselves. Prizes, ranging from \$5 to \$20, are distributed after the coaches have studied films of each game. They are bestowed for such things as pass interceptions, blocking a punt or field goal, recovering a fumble, touching down a kick inside a rival's 20-yard line, tackling a passer for a loss, running more than 20 yards with the ball, from scrimmage or after

catching a pass, highest blocking grades, etc. In addition there's a grand prize of \$250 which goes at the end of the season to the player who receives the most individual awards.

The Virginia State University band of Petersburg, Va., will supply today's between-the-halves entertainment. This is a return visit for the collegians from the Old Dominion. They put on a rousing show here last year. F. Nathaniel Gatlin, the head of Virginia State's music department, directs this crack marching unit, which has appeared all over the country.

An analysis of the 36-man Giant roster shows the South to have been the chief supplier of talent. Fourteen Giants attended Dixie schools. Eight hail from the Midwest, seven from the East, four from the Southwest and three from the Far West. The Southeastern Conference furnished seven players, the Atlantic Coast Conference six players, the Big Ten four players and the Southwest Conference three players.



## HOTEL MANHATTAN HEADQUARTERS FOR PROFESSIONAL TEAMS IN NEW YORK CITY

Hotel Manhattan offers 1400 new air conditioned guest rooms, each with television and radio. Known as the "Home of Champions," this magnificent skyscraper hotel is ideally located in the heart of Times Square. Meet your friends at the popular Playbill Restaurant for cocktails, luncheon, dinner and supper.

Express Subway Trains Speed You to  
Yankee Stadium from the Private  
Subway Entrance of the Hotel Manhattan

**ERWIN O. SCHEL, Manager**  
CHARLES J. BORGES, Sports Representative



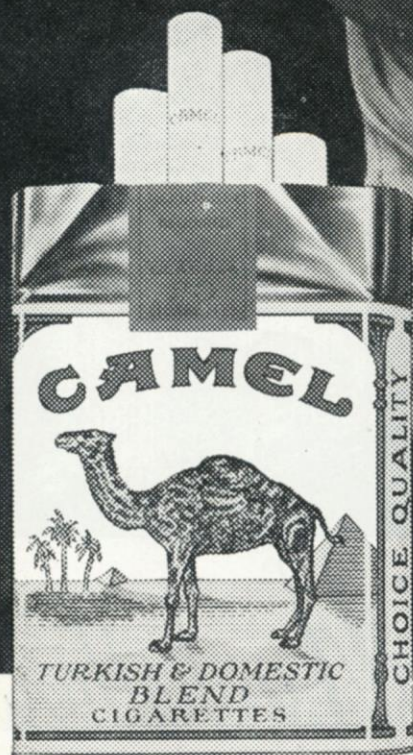
HOTEL  
*Manhattan*  
44TH TO 45TH STREETS  
AT EIGHTH AVENUE • JUdson 2-0300



# Have a real cigarette—have a **CAMEL**

*Dick Nolan*

PROFESSIONAL FOOTBALL STAR



**The best tobacco makes the best smoke!**

R. J. Reynolds Tobacco Co., Winston-Salem, N. C.



# Series Review

**A**LTHOUGH the Giants hold a commanding 33-20-1 edge over the Eagles in a series that began in 1933, Philadelphia has been a rough opponent for the New Yorkers in recent years.

En route to their first NFL championship since 1949, the Eagles took both of their 1960 games with the Giants, winning 49-21 at Philadelphia and 24-7 at the Stadium.

In each of the two preceding years, the teams split their annual home-and-home series. The Giants last scored a sweep in 1957.

The New Yorkers also won both games in 1933, 1935, 1937, 1939, 1940, 1941, 1942, 1950, 1951, and 1956—for a total of eleven sweeps. Philadelphia's other double victories were recorded in 1947, 1948 and 1949—for a total of four.

The complete series record:

1933—h Giants 56, Eagles 0	1939—Giants 13, Eagles 3
Giants 30, Eagles 14	h Giants 27, Eagles 10
1934—h Giants 17, Eagles 0	1940—Giants 20, Eagles 14
Eagles 6, Giants 0	h Giants 17, Eagles 7
1935—h Giants 10, Eagles 0	1941—Giants 24, Eagles 0
Giants 21, Eagles 14	h Giants 16, Eagles 0
1936—Eagles 10, Giants 7	1942—Giants 35, Eagles 17
h Giants 21, Eagles 17	h Giants 14, Eagles 0
1937—Giants 16, Eagles 7	1944—h Eagles 24, Giants 17
h Giants 21, Eagles 0	Giants 21, Eagles 21
1938—Eagles 14, Giants 0	1945—Eagles 38, Giants 17
h Giants 17, Eagles 7	h Giants 28, Eagles 21

1946—Eagles 24, Giants 14	1954—h Giants 27, Eagles 14
h Giants 45, Eagles 17	Eagles 29, Giants 14
1947—Eagles 23, Giants 0	1955—Eagles 27, Giants 19
h Eagles 41, Giants 24	h Giants 31, Eagles 7
1948—Eagles 45, Giants 0	1956—h Giants 20, Eagles 3
h Eagles 35, Giants 14	Giants 21, Eagles 7
1949—h Eagles 24, Giants 3	1957—Giants 24, Eagles 20
Eagles 17, Giants 3	h Giants 13, Eagles 0
1950—h Giants 7, Eagles 3	1958—Eagles 27, Giants 24
Giants 9, Eagles 7	h Giants 24, Eagles 10
1951—h Giants 26, Eagles 24	1959—Eagles 49, Giants 21
Giants 23, Eagles 7	h Giants 24, Eagles 7
1952—Giants 31, Eagles 7	1960—h Eagles 17, Giants 10
h Eagles 14, Giants 10	Eagles 31, Giants 23
1953—Eagles 30, Giants 7	
h Giants 37, Eagles 28	

## GIANTS vs. ALL OPPONENTS

Opponent	W.	L.	T.	Pts.	Opp. Pts.
Baltimore Colts	2	3	0	88	102
Chicago Bears	14	20	2	451	554
Cleveland Browns	11	12	1	389	430
Dallas Cowboys	1	1	1	78	58
Detroit Lions	5	8	1	177	285
Green Bay Packers	15	14	2	425	396
Los Angeles Rams	4	7	0	232	238
Philadelphia Eagles	33	20	1	1011	838
Pittsburgh Steelers	30	19	2	925	726
St. Louis Cardinals	30	10	0	924	624
San Francisco 49ers	3	1	0	99	81
Washington Redskins	33	16	2	1080	799

FOR THE **Fastest, Smoothest Shaves Possible...**

Johnny Unitas

Star Quarterback of the Baltimore Colts, reveals his shaving secret!

Get Palmolive Rapid-Shave

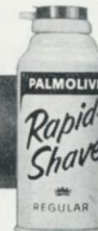
Super-Moisturized Lather Soaks Whiskers With 17 Beard-Softening Ingredients



Rich Rapid-Shave lather is super-moisturized with 17 separate beard-softening ingredients that start to work on contact.



Rapid-Shave sets you up for a fast shave... a smooth shave... a complete shave... a comfortable shave from start to finish.



MENTHOL

REGULAR

SPICE

MAKE IT FAST AND MAKE IT SMOOTH—

USE RAPID-SHAVE IN THE MORNING!



# Giant Statistics

## EIGHT-GAME TEAM RECORD

GIANTS	OPPONENTS
62 First downs, rushing .....	44
86 First downs, passing .....	49
8 First downs, penalty .....	8
156 Total first downs .....	101
2,470 Total yards gained .....	1,914
1,108 Yards gained, rushing .....	944
1,362 Yards gained, passing .....	970
262 Number of rushes .....	245
253 Number of passes .....	201
118 Passes completed .....	87
20 Passes had intercepted .....	19
45.6 Punting average .....	43.9
31 Punts returned .....	17
7.6 Punt return average .....	6.6
19 Kicks-Offs returned .....	31
21.6 Kick-Off return average .....	20.7
34 Penalties .....	41
343 Yards penalized .....	402
9 Fumbles lost .....	15

## INDIVIDUAL STATISTICS

### SCORING

	TD-R	TD-P	TDs	PAT	FG	Pts.
Summerall .....	0	0	0	24-24	9-22	51
Shofner .....	0	7	7	0	0	42
Rote .....	0	4	4	0	0	24
Webster .....	1	2	3	0	0	18
Morrison .....	1	1	2	0	0	12
Gaiters .....	1	1	2	0	0	12
Tittle .....	1	0	1	0	0	6
Barnes .....	1	0	1	0	0	6
Hayes .....	1	0	1	0	0	6
Huff .....	1	0	1	0	0	6
Patton .....	1	0	1	0	0	6
Wells .....	1	0	1	0	0	6

## PASSING

	Att.	Comp.	Int.	Yds.	L.G.	TDs.	Pct.
Tittle .....	154	79	11	1,008	59	9	.513
Conerly .....	78	33	7	437	37	4	.423
Grosscup .....	20	5	2	87	32	1	.250
Gaiters .....	1	1	0	6	6	1	1.000

## RUSHING

	Att.	Yds.	L.G.	Avg.
Webster .....	99	493	59	5.0
Gaiters .....	61	294	29	4.8
Wells .....	34	113	17	3.3
Webb .....	6	51	21	8.5
Morrison .....	33	48	14	1.5
Tittle .....	12	45	17	3.8
Chandler .....	1	30	30	30.0
Conerly .....	9	15	9	1.7
Grosscup .....	2	10	10	5.0
Shofner .....	1	6	6	6.0

## RECEIVING

	P.C.	Yds.	L.G.	TDs.
Shofner .....	38	585	44	7
Rote .....	30	429	48	4
Walton .....	19	289	37	0
Mor'son .....	11	67	16	1
Webster .....	9	98	59	2
Gaiters .....	5	26	14	1
Wells .....	4	22	19	0
Hall .....	2	22	20	0

## PUNT RETURNS

	No.	Yds.	L.G.
Stits .....	17	132	20
Wells .....	9	44	11
Webb .....	4	60	30
Morrison .....	1	0	0

## KICK-OFF RETURNS

	No.	Yds.	L.G.
Gaiters .....	7	198	49
Stits .....	4	87	30
Wells .....	4	72	21
Webb .....	3	34	11
Morrison .....	1	21	21

## INTERCEPTIONS

	No.	Yds.	L.G.
Barnes .....	6	160	102
Patton .....	5	99	51
Lynch .....	4	48	36
Huff .....	2	13	13
Livingston .....	2	0	0

## PUNTING

	No.	Avg.	Lgst.
Chandler .....	36	45.6	66

"He tried to take my

**Drake's**  
**COOKIES"**





Sponsored by: P. Ballantine & Sons/Howard Clothes/L&M Cigarettes/Parks Sausage.



**If you want to know what's really happening on the field,  
listen to the Giants on WNEW Radio.**

**Team:** New York Football Giants. **Station:** WNEW Radio (1130 on your dial).  
**Place:** All Giant games (home and away). **Play-by-play:** Marty Glickman,  
Al DeRogatis and Joe Hasel. **Pre-game show:** Kyle Rote. **Post-game show**  
(direct from locker room): Kyle Rote and guests. Be sure to stay tuned after  
the game. You'll hear what happened, why it happened, how it happened.

**(THE ONLY THING BETTER THAN WNEW'S COVERAGE IS TO BE AT THE GAME — WITH A RADIO)**

**WNEW RADIO**

**1130 KC / 102.7 FM / A METROPOLITAN BROADCASTING STATION**



## Giants on Offense

R. H. ROTE (44)	F. B. WEBSTER (29)	Q. B. TITTLE (14)	L. H. GAITERS (35)	KICK-OFF 2:05 P.M.
R. E. WALTON (80)	R. T. LARSON (53)	L. G. DESS (62)	L. T. BROWN (79)	R. E. SHOFNER (85)
	R. G. STROUD (66)	C. WIETECH (55)		R. W. WALST

## Eagles on Defense

L. E. SUGAR (84)	L. T. RICHARDSON (72)	M. L. B. WEBER (51)	R. T. GUNNELS (74)	R. E. M. CAMPBELL (78)
L. W. CARR (21)	L. L. B. PELLEGRINI (53)	L. S. FREEMAN (41)	R. S. BURROUGHS (45)	R. W. AMERSON (46)
			R. L. B. BAUGHAN (55)	

## NEW YORK GIANTS ROSTER

No.	Name	Position	Weight	Height	Age	College	Yrs. Pro.
11	Grosscup, Lee	QB	185	6:01	24	Utah	2
12	Hall, Pete	OE	200	6:03	23	Marquette	1
14	Tittle, Y. A.	QB	195	6:01	34	Louisiana State	10
20	Patton, Jim	DHB	185	5:10	29	Mississippi	7
21	Webb, Allan	D-OHB	180	5:10	27	Arnold	1
22	Lynch, Dick	DHB	200	6:01	25	Notre Dame	4
25	Nolan, Dick	DHB	185	6:01	29	Maryland	8
28	Wells, Joel	OHB	198	6:01	26	Clemson	1
29	Webster, Alex	OHB	220	6:03	30	North Carolina State	7
34	Chandler, Don	K-HB	205	6:02	26	Florida	6
35	Gaiters, Bob	OHB	215	5:11	23	New Mexico State	1
40	Morrison, Joe	OHB	212	6:01	23	Cincinnati	3
42	Conerly, Charlie	QB	185	6:01	40	Mississippi	14
44	Rote, Kyle	OE	200	6:01	34	Southern Methodist	11
48	Stits, Bill	D-OHB	190	6:00	29	U. C. L. A.	9
49	Barnes, Erich	DHB	198	6:03	26	Purdue	4
52	Hayes, Larry	LB	230	6:03	26	Vanderbilt	1
53	Larson, Greg	OT	240	6:02	22	Minnesota	1
55	Wietecha, Ray	C	230	6:01	32	Northwestern	9
61	Smith, Zeke	OG-LB	235	6:02	25	Auburn	2
62	Dess, Darrell	OG	245	6:00	26	North Carolina State	4
65	Walker, Mickey	OG	225	6:00	22	Michigan State	1
66	Stroud, Jack	OG	255	6:01	32	Tennessee	9
70	Huff, Sam	LB	230	6:01	26	West Virginia	6
72	Janerette, Charlie	OT	250	6:03	22	Penn. State	2
75	Katcavage, Jim	DE	240	6:03	26	Dayton	6
76	Grier, Roosevelt	DT	290	6:05	28	Penn. State	6
77	Modzelewski, Dick	DT	260	6:00	30	Maryland	9
79	Brown, Roosevelt	OT	255	6:03	28	Morgan State	8
80	Walton, Joe	OE	205	5:11	25	Pittsburgh	5
81	Robustelli, Andy	DE	230	6:01	33	Arnold College	11
82	Scott, Tom	LB	220	6:02	31	Virginia	9
83	Simms, Bob	LB	225	6:01	23	Rutgers	2
85	Shofner, Del	OE	185	6:03	26	Baylor	5
88	Summerall, Pat	K-OE	220	6:04	31	Arkansas	10
89	Livingston, Cliff	LB	215	6:03	30	U. C. L. A.	8

### GIANT SPECIALS

PAT, FG and Kick-Offs—Su  
Chandler (34).  
Punting—Chandler (34), S  
Holding for PAT, FG—Co  
Grosscup (11).  
Kick Returns—Stits (48), C

### OFFICIALS

#### Referee

(5) Ronald Gibbs, St.

#### Umpire

(18) Tony Sacco, St. A

#### Linesman

(19) George McAfee,

#### Back Judge

(25) Thomas Kelleher, H

#### Field Judge

(21) Fred Swearingen,

### EAGLE SPECIALS

Punting—Hill (10), Pea  
PAT, FG and Kick-Offs—W  
Wittenborn (6), Dea  
Holding for PAT, FG—Jur  
Kick Returns—Brown (22),  
Cross (27).

PLEASE USE ENTRANCE RAMP N

# When it's Calvert Whiskey is delicious





**KICK-OFF**  
**2:05 P.M.**

	R. H. McDONALD (25)	F. B. PEAKS (26)	Q. B. JURGENSEN (9)	L. H. BARNES (33)
(85)	R. E. WALSTON (83)	R. T. SMITH (76)	L. G. WITTENBORN (62)	L. E. RETZLAFF (44)
		R. G. S. CAMPBELL (67)	C. BEDNARIK (60)	

## Eagles on Offense

## Giants on Defense

L. E. KATCAVAGE (75)	L. T. MODELEWSKI (77)	M. L. B. HUFF (70)	R. T. GRIER (76)	R. E. ROBUSTELLI (81)
L. H. BARNES (49)	L. L. B. LIVINGSTON (89)	L. S. NOLAN (25)	R. L. B. SCOTT (82)	R. H. LYNCH (22)
		R. S. PATTON (20)		

## PHILADELPHIA EAGLES ROSTER

### ANT SPECIALISTS

l Kick-Offs—Summerall (88),  
Chandler (34).  
handler (34), Shofner (85).  
or PAT, FG—Conerly (42),  
Grosscup (11).  
s—Stits (48), Gaiters (35)

### OFFICIALS

#### Referee

ald Gibbs, St. Thomas

#### Umpire

ny Sacco, St. Ambrose

#### Linesman

George McAfee, Duke

#### Back Judge

mas Keliher, Holy Cross

#### Field Judge

d Swearingen, Ohio U.

### GLE SPECIALISTS

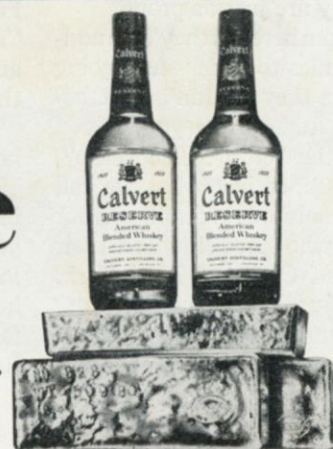
—Hill (10), Peaks (26).  
d Kick-Offs—Walston (83),  
born (60), Dean (35).  
r PAT, FG—Jurgensen (9).  
s—Brown (22), Dean (35),  
Cross (27).

No.	Name	Position	Weight	Height	Age	College	Yrs. Pro.
9	Jurgensen, Sonny	QB	200	6:00	27	Duke	5
10	Hill, King	QB	213	6:03	25	Rice	4
21	Carr, Jimmy	DHB	209	6:02	28	Morris Harvey	5
22	Brown, Tim	OHB	198	5:11	24	Ball St. Tchers	3
25	McDonald, T.	OHB	172	5:10	26	Oklahoma	5
26	Peaks, Clarence	FB	220	6:01	26	Michigan State	5
27	Cross, Irv	DHB	190	6:01	22	Northwestern	1
29	Nocera, John	LB	220	6:01	27	Iowa	3
30	Sapp, Theron	OHB	205	6:01	26	Georgia	3
33	Barnes, Bill	OHB	198	6:01	26	Wake Forest	5
35	Dean, Ted	OHB	210	6:02	23	Wichita	2
41	Freeman, Bob	DHB	200	6:01	28	Auburn	5
44	Retzlaff, Pete	OE	212	6:01	29	South Dakota State	6
45	Burroughs, Don	DHB	189	6:04	29	Colorado State	7
46	Amerson, Glen	DHB	186	6:01	22	Texas Tech	1
51	Weber, Chuck	LB	235	6:00	30	West Chester	7
53	Pellegrini, Bob	LB	235	6:02	26	Maryland	5
55	Baughan, Maxie	LB	226	6:01	23	Georgia Tech	2
60	Bednarik, Chuck	C-LB	235	6:03	36	Pennsylvania	13
61	Keys, Howard	OC	240	6:03	26	Oklahoma State	2
62	Wittenborn, John	OG	240	6:02	25	S. E. Missouri	4
66	Renfro, Will	DE	235	6:05	29	Memphis State	5
67	Campbell, Stan	OG	230	6:02	28	Iowa State	8
72	Richardson, Jess	DT	265	6:03	31	Alabama	9
73	Khayat, Ed	DT	248	6:04	26	Tulane	5
74	Gunnels, John	DT	250	6:03	24	Georgia	2
75	McCusker, Jim	OT	245	6:02	25	Pittsburgh	4
76	Smith, J. D.	OT	250	6:05	25	Rice	3
77	Oakes, Don	OT	245	6:03	23	Virginia Tech	1
78	Campbell, Marion	DE	250	6:03	31	Georgia	8
79	Gossage, Gene	OG	240	6:03	26	Northwestern	2
80	Tracey, John	OE	225	6:03	28	Texas A & M	3
83	Walston, Bobby	OE	195	6:00	32	Georgia	11
84	Sugar, Leo	DE	230	6:01	32	Purdue	8
87	Lucas, Dick	OE	216	6:02	27	Boston College	4

ANCE RAMP NEAREST YOUR SEAT

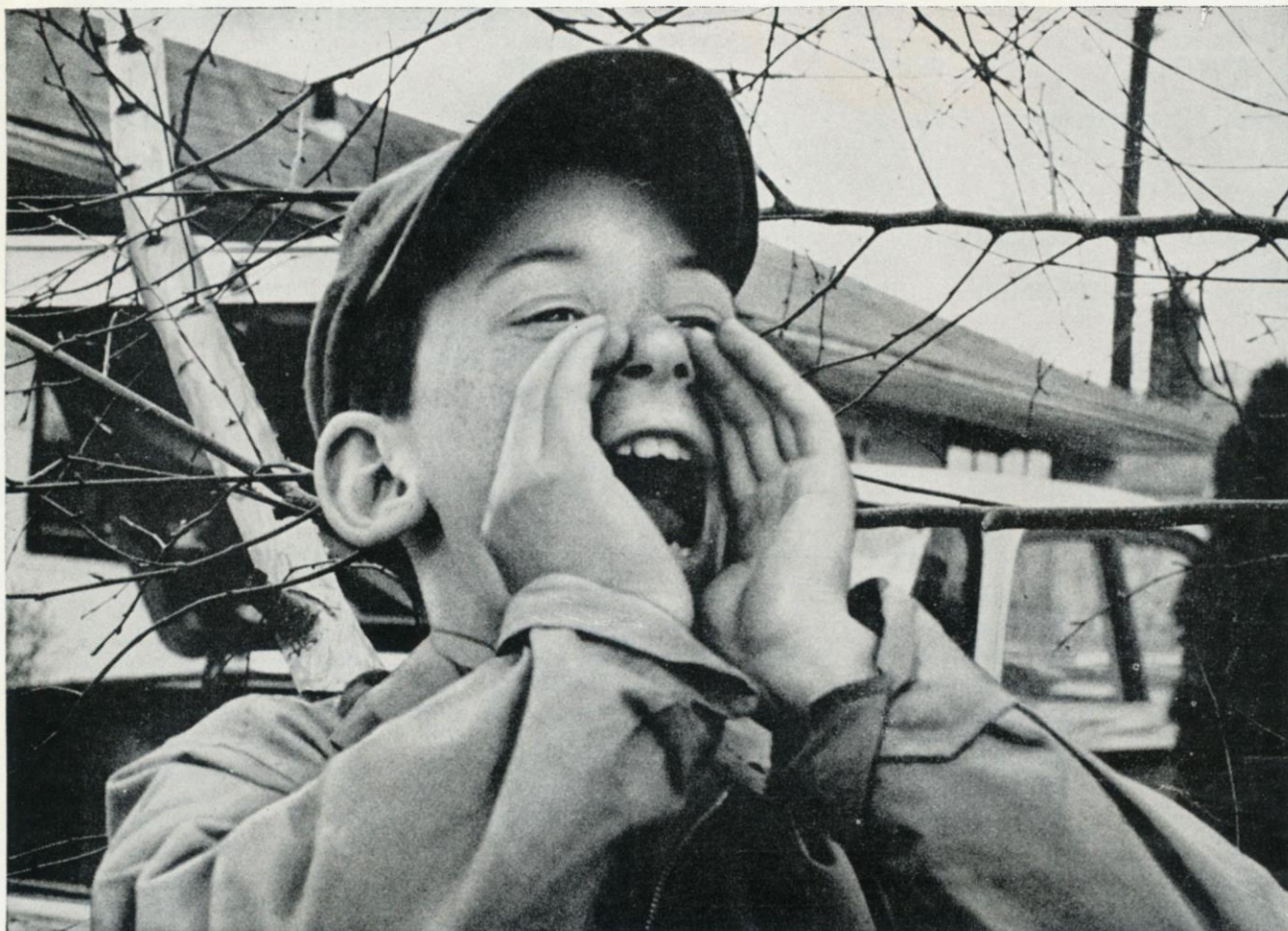
*call for*  
**Calvert Reserve**  
*—the right whiskey for today's taste*

"Always Good as Gold"



HOUSE OF CALVERT, LOUISVILLE, KY. • FULL 86 PROOF • BLENDED WHISKEY • 65% GRAIN NEUTRAL SPIRITS.





## Newest member of the “Come’n-See-Our-Brand-New-Car” Club

**Your family, too, can trade in the old, drive home the new with an Auto Loan from Chemical New York**

Their new car has Jimmy jumping, and the rest of the family are just as proud.

From here on, they'll be adding miles to family fun, going places they couldn't visit before. And so can you, if you join the "club". The "club", you see, is just what we call the thousands of families in our area who have financed their cars at Chemical New York.

Why did they come to us? Because we do just about everything but deliver the car.

See a "New York Banker with the hometown touch". At your nearest office of Chemical New York, you'll talk with a "hometown banker". He'll put together an Auto Loan that's planned to fit your budget. One with easy terms at low cost.

**Puts you in the driver's seat in "no time flat".** Come in today, and tomorrow he'll try to have the check in your hand.

Of course, if you've borrowed before from Chemical New York, you may have your loan in a matter of minutes. So, if you need a loan for a car (or for anything else to make living easier for you and your family), visit "The New York Bank with the hometown touch".

### Three of our most popular Auto Loan Plans

Annual cost only \$4.25 per annum per \$100 of loan (deducted in advance)

AMOUNT OF LOAN	AMOUNT YOU RECEIVE	NUMBER OF MONTHS	YOU REPAY MONTHLY
\$1,440	\$1,378.80	12	\$120
	1,317.60	24	60
	1,256.40	36	40
2,160	2,068.20	12	\$180
	1,976.40	24	90
	1,884.60	36	60
3,240	3,102.30	12	\$270
	2,964.60	24	135
	2,826.90	36	90

**Chemical Bank** Founded 1824  
**New York Trust Company**  
*The New York Bank with the hometown touch*



# Looking Over: The Eagles

**P**ROBABLY no championship team in any sport received more of a brush than the Eagles received from the pre-season evaluators of National Football League prospects for 1961.

Almost without exception, the experts airily dismissed Philadelphia's 1960 Eastern divisional victory and 17-13 triumph over the Packers in last December's world championship play-off as just one of those things that wouldn't and couldn't possibly happen again.

The reasoning behind this fallacious theory was that the Eagles' 1960 success was mainly attributable to the brilliant passing and fiery field leadership of Norm Van Brocklin . . . and that, without Van Brocklin, who hung up his cleats to become coach of the Minnesota Vikings, Philadelphia would be just another team in 1961.

Events have proved this size-up to have been grossly unfair to the surviving members of the Eagles' title-winning squad. Van Brocklin was a dominating personality, to be sure, but there were solid values in his supporting cast that were insufficiently appreciated.

Spurred by pride and stung, perhaps, by the lack of due respect displayed by the handicappers, the 1961 Eagles have rather convincingly demonstrated that 1960 was no fluke. At this late stage of the campaign, when a couple of the rivals that were supposed to give



NICK SKORICH

them their come-uppance already have taken the pipe, they remain the team to beat in the East.

Nick Skorich, the sharp young coach who stepped up into the boss spot with the retirement of Buck Shaw, has put together another fine team. In so doing, he has banished the indispensable man myth of Van Brocklin. The new hub of the offense is Sonny Jurgensen, who has been accomplishing everything Van Brocklin accomplished, perhaps even better. At last look, the 27-year-old Duke graduate, who sat patiently on the bench for four years awaiting his turn, was the NFL's top passer.

In the interests of not repeating a mistake that already has caused much embarrassment, it should be

stressed, however, that the Eagles are more, much more, than a superior quarterback and thirty-five other fellows. They have a solid cast from top to bottom.

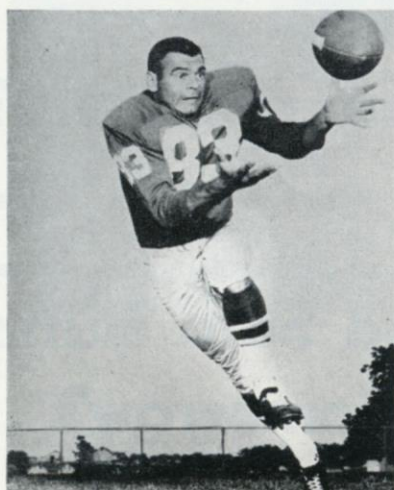
Philadelphia's pass-catching trio of Tommy McDonald, Bobby Walston and Pete Retzlaff compares with any set of receivers in the league. Billy Barnes, Clarence Peaks, Ted Dean, Theron Sapp and Tim Brown provide quality in depth at the backfield running positions. King Hill is a reliable back-up man for Jurgensen under center.

The offensive line, anchored by ageless Chuck Bednarik at center, provides crisp blocking. Its other members, from left to right, are Jim McCusker, John Wittenborn, Stan Campbell and J. D. Smith.

An experienced defensive unit has been bolstered up front by the addition of Leo Sugar at left end. He joins Jess Richardson, John Gunnell and Marion Campbell on a rugged rushline. The development of Maxie Baughan as a pro sophomore has solidified a line-backing corps that includes established stars in Chuck Weber and Bob Pellegrini.

All-Leaguer Tom Brookshier has been knocked out of action with a broken leg. But the deep secondary, led by Jimmy Carr, Bob Freeman and Don Burroughs, remains tough and tenacious.

Make no mistake about it. The Eagles are for real.



BOBBY WALSTON

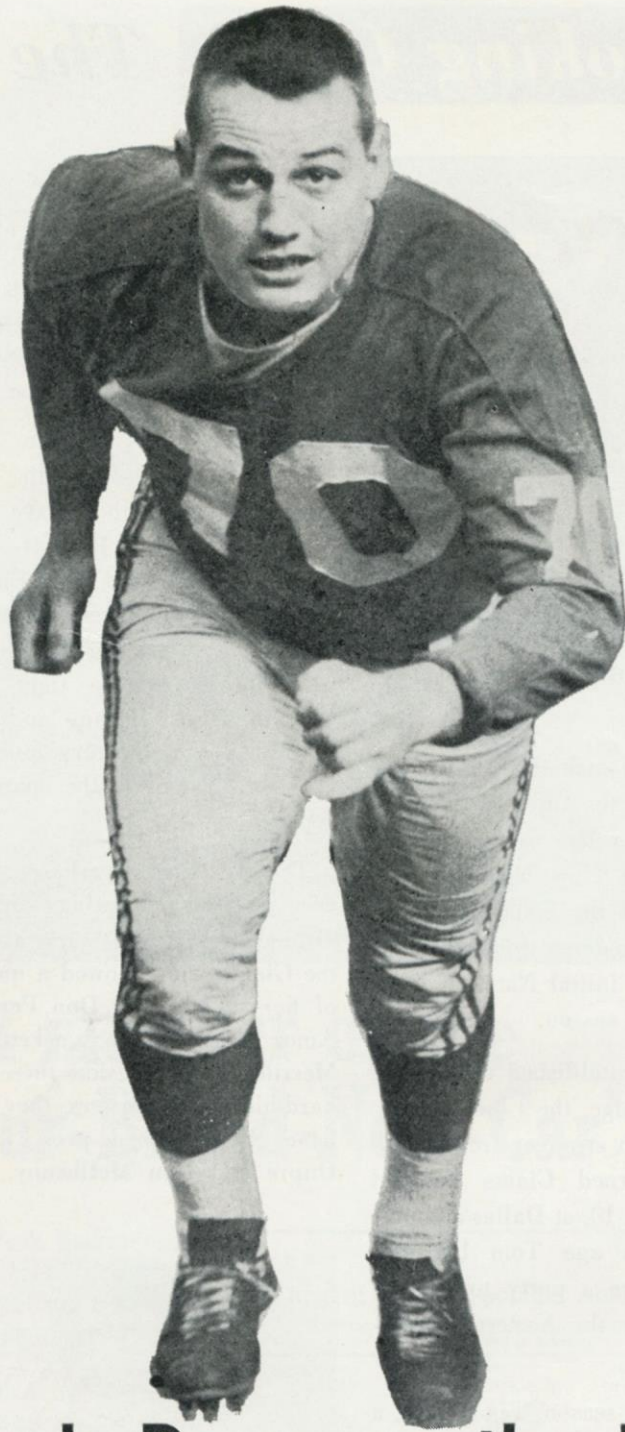


SONNY JURGENSEN



TOMMY McDONALD





**How Does It Look Down on the Field?**

**SAM HUFF** . . . analyzes today's game from the player's point of view. What were the key plays? What worked for the Giants? Who played a particularly good game? Why did Sam set up the defenses the way he did? **Read Sam Huff's**

**Analysis — EXCLUSIVE in Tomorrow's  
JOURNAL-AMERICAN**



# *Eagle*



CLARENCE PEAKS



LEO SUGAR



BOB PELLEGRINI



PETE RETZLAFF

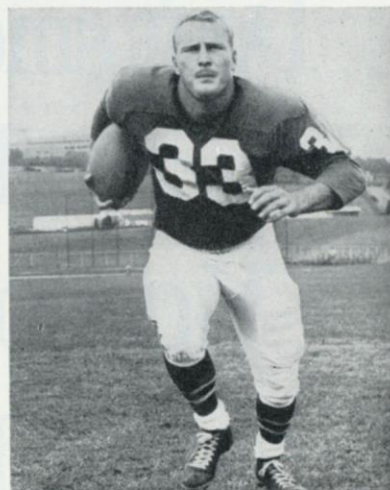


CHUCK BEDNARIK



TOM BROOKSHIER

# *Stars*



BILL BARNES



JESS RICHARDSON



TED DEAN



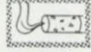
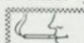
PLEASE USE ENTRANCE RAMP NEAREST YOUR SEAT



Don't smoke another cigarette  
until you learn what  
**VICEROY'S** *Deep weave*\* Filter  
can do for your taste!




\*Reg. U.S. Patent Office

Pure, Safe Filter Material Woven By Special Process. This remarkable filter starts with the same straight filter strands  as most good filters—then Viceroy weaves them by a special process into the amazing Deep-Weave Filter.  The Deep-Weave Filter weaves and reweaves the smoke—sends every puff deep through the filter to give you wonderful smoothness of taste  a taste that's never rough, never raw! This is the filter you can trust to give you good taste—the perfect filter to go with Viceroy's deep-cured blend.  That's why Viceroy tastes better than ever before! Don't smoke another cigarette until you learn what Viceroy can do for your smoking pleasure!

Only **VICEROY'S** Got It... At Both Ends!  
*GOT THE FILTER... GOT THE BLEND*



© 1961, BROWN & WILLIAMSON TOBACCO CORPORATION  The Mark of Quality in Tobacco Products



# NFL News and Notes

**C**HICAGO has been named as the site of the National League draft meeting, scheduled for Dec. 4, after the regular college season closes. . . . As a result of the 1960 college draft, NFL clubs added more than eighty crack rookies to their 1961 rosters (actually an even 100 rookies made the grade this season, but some were "future" selections picked in previous drafts or earlier draftees whose competitive debuts were delayed by military service or injuries). . . . There'll be keen competition for the unofficial rookie-of-the-year awards presented by various agencies. Among the leading candidates are Mike Ditka of the Bears, Francis Tarkenton of the Vikings, Norm Snead of the Redskins, Don Perkins of the Cowboys, Bob Gaiters of the Giants, Bobby Watkins of the Browns, Bob Harrison of the Colts, Pat Studstill of the Lions, Herb Adderley of the Packers, Pervis Atkins of the Rams, Myron Pottios

of the Steelers, Bill Kilmer of the Forty-Niners, Ernie McMillan of the Cardinals and Irv Cross of the Eagles.

The NFL's annual meeting will be held on Jan. 8 at the Shamrock Isle Hotel in Bal Harbor, Miami Beach. That's two days after the second annual NFL Play-Off Bowl game in the Orange Bowl Stadium at Miami. Incidentally, here are

## NATIONAL LEAGUE LEADERS

### RUSHING

1. Brown, Cleveland ..... 171 for 720 yds.
2. Taylor, Green Bay ..... 123 for 711 yds.
3. Pietrosante, Detroit ..... 121 for 575 yds.

### PASSING

1. Jurgensen, Philadelphia ..... 129 of 224 for 1973 yds.
2. Starr, Green Bay ..... 99 of 167 for 1455 yds.
3. Plum, Cleveland ..... 96 of 167 for 1279 yds.

### RECEIVING

1. Phillips, Los Angeles ..... 40 for 677 yds.
2. McDonald, Philadelphia ..... 40 for 628 yds.
3. SHOFNER, NEW YORK ..... 38 for 585 yds.

### SCORING

1. Hornung, Green Bay ..... 111 pts.
2. Moore, Baltimore ..... 72 pts.
3. Groza, Cleveland ..... 57 pts.
- Walston, Philadelphia ..... 57 pts.

some facts about the Play-Off Bowl game that may not be generally known. The game is between the teams that finish second in the two NFL divisions. Detroit defeated Cleveland, 17-16, in last January's inaugural contest. If there should be a tie for second place in either division (which is highly possible, considering the closeness of the races), the team qualifies which (1) has swept its two games against the team with which it is tied or (2) has outscored its deadlocked opponent in their two meetings in the event they split their series.

When Sonny Jurgensen of the Eagles passed for 436 yards against the Redskins a couple of weeks back, he came within one yard of tying Tommy Thompson's 1953 club record. However, a fellow named Norm Van Brocklin holds the way-out league record of 554 yards by passing. He set it against the defunct New York Yankees on Sept. 28, 1951.

# Enjoy em at the Game and at Home

Here at the Yankee Stadium, reach for MRS. WAGNER'S delicious individual pies. At home, enjoy the fresh-baked goodness of MRS. WAGNER'S family-size pies. Both ways, you're in for real enjoyment.



## Why bake when you can buy

*Mrs. Wagner's Pies*



After  
the game,  
enjoy  
**Schenley**  
the only whisky with whipped-in smoothness



SCHENLEY DISTILLERS CO., N.Y.C. • BLENDED WHISKY, 86 PROOF, 65% GRAIN NEUTRAL SPIRITS



# Giant Blackboard: Weak-Side Play

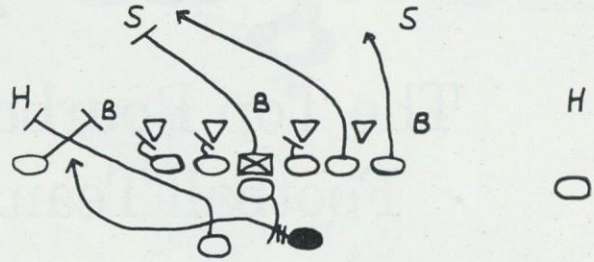
ONE requisite of a good running attack is that it strike effectively at the weak side, i.e. the side on which fewer linesmen are on the attacking front. To be sure, strong-side plays must be made to click, too, but, in general, they involve less maneuver and reduce to a showdown of sheer force.

The play diagrammed in the adjacent column, from information supplied by Don Heinrich, the Giant backfield coach, is one of the ways in which the New Yorkers attack the weak side. You've seen Alex Webster pick up yardage on this gambit, or assorted variations, on countless occasions.

With the Giants strong to the right in "three-end" formation, the quarterback spins out to the right and hands off to the fullback (represented by the solid black circle). The fullback, initially slanting toward the line, loops back and circles the defensive right end.

The left halfback, after feinting a thrust at the line, breaks sharply to the left to screen block the defensive right halfback. The split left end cross blocks in on the right corner linebacker. Except for the center and the two outside men on the strong side, who go downfield to clean out, the linemen aim at getting outside position blocks on the defenders playing opposite.

Obviously, the tough block here is the one by the Giant left tackle on the defensive right end, who usually will be lined up to his outside. The



quarterback's spin out to the right, the halfback's initial move forward and the fullback's feint of a tackle smash all are designed to influence the right end to charge inside—also to keep the middle line-backer from moving too soon in the ultimate direction of the play.

If these assignments don't work out against the defense presented, the quarterback will adjust them in the huddle or by an "automatic." For instance, if it proves impossible for the left tackle to get an outside block on the right end, the halfback, who has a better angle, might help out, with the left guard pulling to make the screen block on the corner halfback. Sometimes both guards are pulled on this general type of play.

One way or another, something must be worked out. If it isn't, the whole running game may be nullified. To make consistent progress on the ground, a team must hit strongly at the weak side.

## SAM HUFF'S MR. DEFENSE

- SENSATIONAL NEW FOOTBALL GAME.
- REAL FOOTBALL STRATEGY WITH THE THRILLS OF OFFENSIVE PLAYS AND DEFENSIVE FORMATIONS.
- ON SALE AT ALL LEADING RETAIL OUTLETS.
- SAM WILL APPEAR IN PERSON AT BARGAINTOWN ON ROCKAWAY TURNPIKE IN NORTH LAWRENCE, L. I. IN THE TOY DEPT. ON THURSDAY EVENING, NOVEMBER 16, FROM 7 TO 9 P.M.
- PLAN TO SEE SAM.
- IN THE EVENT YOUR FAVORITE STORE IS TEMPORARILY OUT OF "MR. DEFENSE" PLEASE MAIL \$8.00 TO BOX 35, BROOKLYN 11, N. Y. AND THE GAME WILL BE MAILED TO YOU POSTPAID.



MADE BY CARDINAL INDUSTRIES, BROOKLYN 11, N. Y.



# League Leaders!

The Top Bourbon ... Like the Top  
Football Team ... has Quality!

## J.W. DANT WORLD'S LARGEST SELLING BONDED BOURBON



Take your choice of the two Kentucky favorites—Dant 100 Proof Bottled in Bond or J. W. Dant 86 Proof ... its mild, light, lower-priced partner.

### 1961 NATIONAL LEAGUE LEADERS

Rushing	Brown, Cleveland, 171 for 720 yds.
Passing	Jurgensen, Phila. 129 of 224 for 1973 yds.
Receiving	Phillips, Los Angeles, 40 for 677 yds.
Scoring	Hornung, Green Bay, 111 pts.
Punting	Lary, Detroit, 48.2 yd. avg.
Punt Returns	Wood, Green Bay, 9-195 yds.
Kick-Off Returns	Studstill, Detroit, 8-298 yds.
Interceptions	Sample, Pittsburgh, 8-141 yds.





# Only from MacGregor



JOHNNY UNITAS,  
member of MacGregor  
Advisory Staff of Champions.

## Official NFL Youth Grid Sets

This young lad's football uniform and protective equipment is just like that worn by the Colts' great Johnny Unitas. It meets all of the exacting standards of quality set by the National Football League and is thoroughly tested for its safety and protective features.

The exclusive MacGregor NFL youth grid sets are available in authentic reproductions of every league team uniform. Each set contains a helmet, shoulder pad, jersey and pants. Get your boy a MacGregor uniform that

looks just like the one his favorite National Football League player wears.

Look for the NFL seal that identifies the official and approved youth football equipment... wherever MacGregor sports equipment is sold.

*MacGregor*®

The MacGregor Co., Cincinnati 32, Ohio  
DIVISION OF BRUNSWICK  
WORLD LEADER IN RECREATION



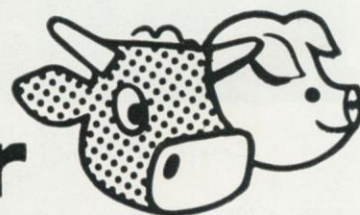




# "THESE FRANKFURTS ARE HICKORY SMOKED!"

Enjoy 'em at home, the circus, the football field, *everywhere!*  
Take your choice—regular or all-beef franks—both are *all meat!* Both deliciously hickory-smoked! Available in jars and cellophane, too. By famous...

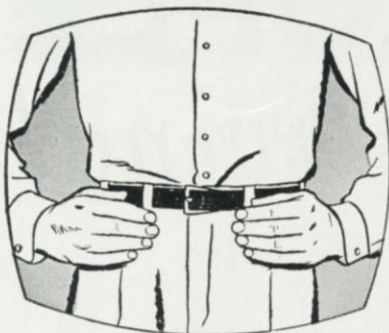
## Stahl-Meyer



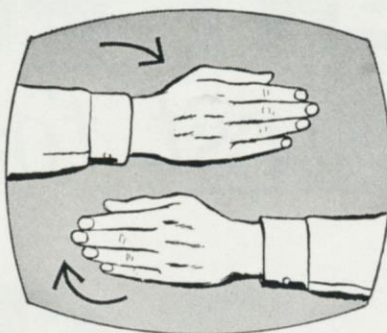
FAMOUS FERRIS HICKORY SMOKED CANNED HAM AND FERRIS BACON ARE TWO MORE FINE PRODUCTS MANUFACTURED AND KITCHEN TESTED BY STAHL-MEYER INC.



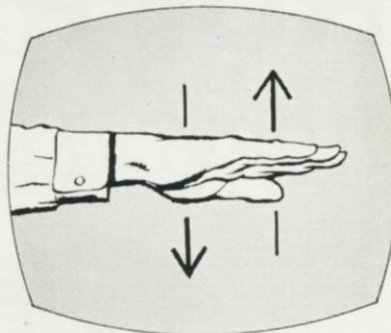
# DO YOU KNOW YOUR SIGNS?



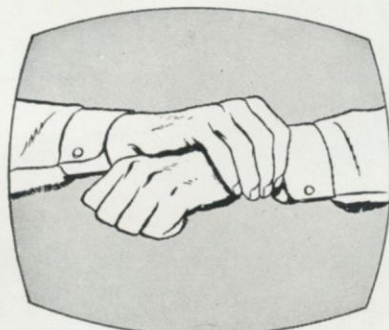
Arms akimbo signal flashed to indicate team off-side.



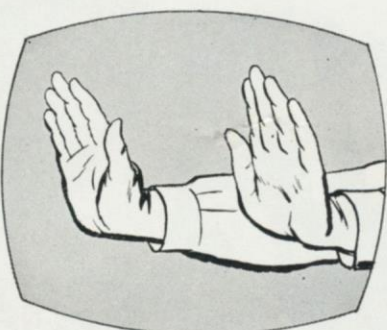
Signal used for illegal position or procedure.



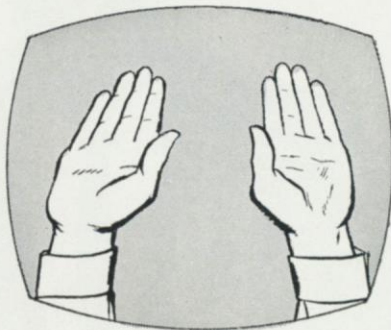
Official indicates player is charged with personal foul.



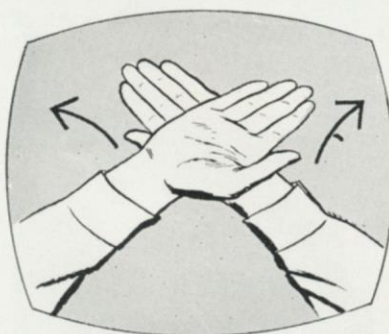
This signal means illegal use of hands or arms.



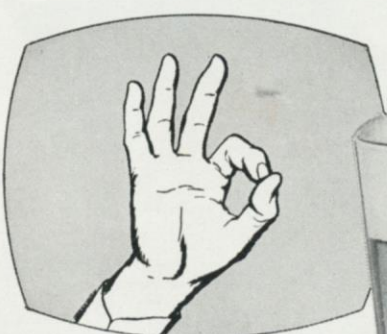
Signal for forward pass or kick catching interference.



Familiar signal for touch-down or field goal.



Team — or official — calls for time out.



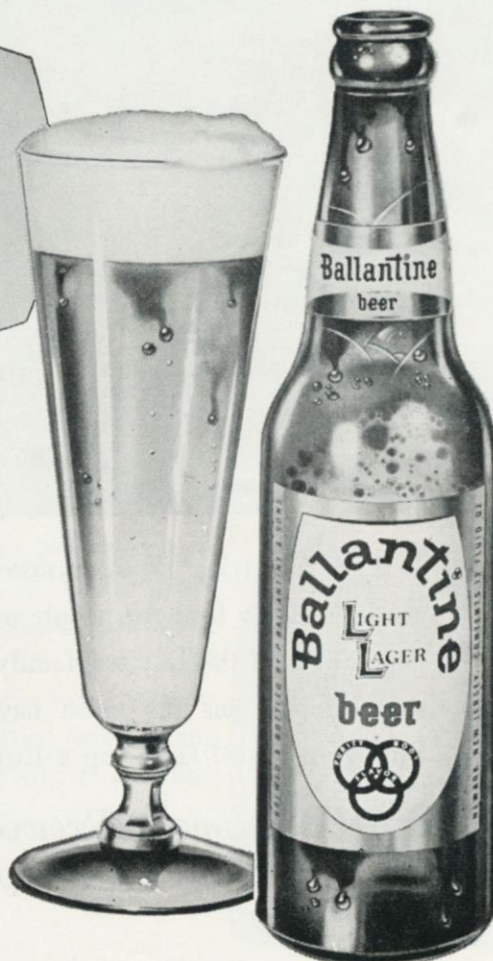
Fan calls for Ballantine beer—the 'crisp' refresher!

Ask the man for  
**Ballantine beer**

SEE WHY OVER 5 MILLION GLASSES ARE ENJOYED EVERY DAY BY PEOPLE WHO KNOW QUALITY WHEN THEY TASTE IT!



P. BALLANTINE & SONS, NEWARK, N. J.





# RUPPERT PEOPLE

*have a thirst for living!*



A *thirst* for living means a *taste* for Ruppert! Ruppert is the light lively beer for people who live livelier lives. Four generations of the Ruppert family have seen to it *personally* that Ruppert has the finest flavor your money can buy. So live a little! Open up a Ruppert and swallow deep.

*Have a Ruppert! Brewed since 1867 by four generations of the Ruppert family!*

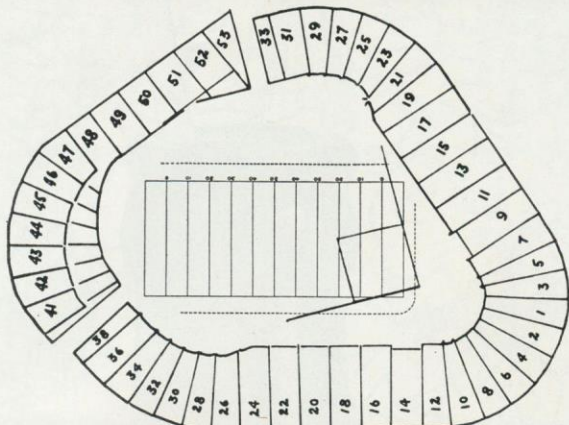


*Bright  
new  
label...  
same  
fine  
Ruppert!*

© 1960, JACOB RUPPERT, NEW YORK CITY



## Yankee Stadium Services & Facilities



**LOST AND FOUND**—Direct inquiries and reports to Jack White, the Stadium Superintendent. Any attendant will direct you to his office.

**REST ROOMS**—**Men:** Gate 2, Press Gate, Stadium Club (lower, upper), Gate 6; Lower Sections 34, 8, 6, 15, 21, 27; Mezzanine Sections 27, 15, 5, 18, 28; Upper Sections 34, 20, 6, 15, 21; Bleacher Sections 43, 47, 52. **Women:** Gate 2, Gate 4, Stadium Club (lower, upper), Gate 6; Lower Sections 28, 20, 5, 15, 27; Mezzanine Sections 21, 15, 6, 18, 34; Upper Sections 28, 20, 5, 15, 29; Bleacher Sections 47, 52.

**PUBLIC TELEPHONES**—Gate 2, Gate 4, Press Gate, Stadium Club (lower, upper), Gate 6, Lower Sections 24, 14, 12, 11, 17, 27; Mezzanine Sections 27, 17, 7, 8, 22; Upper Sections 34, 20, 12, 8, 9, 19, 27; Bleacher Sections 41, 49, 51.

### PARKING AREAS

#### YANKEE LOTS

South side 157th St., Ruppert Pl. to Cromwell Ave.  
Between Cromwell and River Aves., on 153rd St.  
163rd to 164th Sts., between River and Gerard Aves.  
151st St. and River Ave., opposite Bronx County Jail.

#### PRIVATELY-OWNED LOTS

West side Ruppert Pl., between 157th and 158th Sts.  
West side River Ave., between 151st and 153rd Sts.  
West side River Ave. and 157th St.  
East side River Ave., North of 153rd St.  
East side River Ave., North of 151st St.  
East side River Ave., 164th to 165th Sts.  
East side River Ave., South of 162nd St.  
Farmer's Square—Cromwell Ave. Roadway, and  
West of 151st St. Viaduct, opposite Bronx County Jail.  
East 168th St. and River Ave.

#### GARAGES

Cromwell Ave. and 157th St.  
East side of River Ave., South side of 158th St.  
East side of River Ave., North side of 157th St.  
East side of River Ave., South side of 157th St.  
North side of 158th St., between River and Gerard Aves.  
East side of River Ave., corner of 168th St.

Also, the Polo Grounds lot again will be in service for all Giant games at the Stadium.

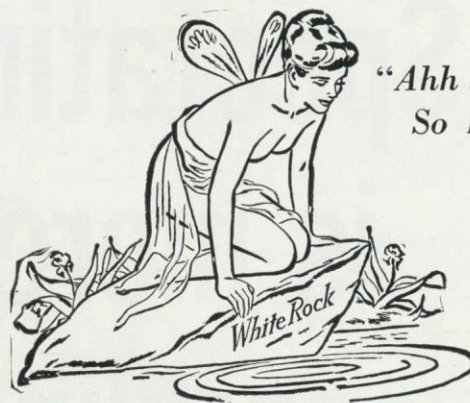
### SOUVENIR PRICE LIST

PICTURES (12 Players)	.25
PAST AND PRESENT PICTURES (36 Players)	.50
PENNANT (Large)	1.00
LUCKY MASCOT (Action Doll)	1.00
KNITTED HAT (Colors)	1.50
OFFICIAL TYPE HELMET (All Sizes)	5.00

Souvenir Stands located at Gates 2, 4, 6; Lower Sections 7, 14; Bleacher Sections 43, 50.

These items also are available by mail from Harry M. Stevens, Inc., Souvenir Department, Yankee Stadium, Bronx 51, N. Y.

## SEASON AFTER SEASON...



"Ahh ...  
So Pure!"

## She's New York's Best Girl!

# White Rock

for sparkling fine beverages

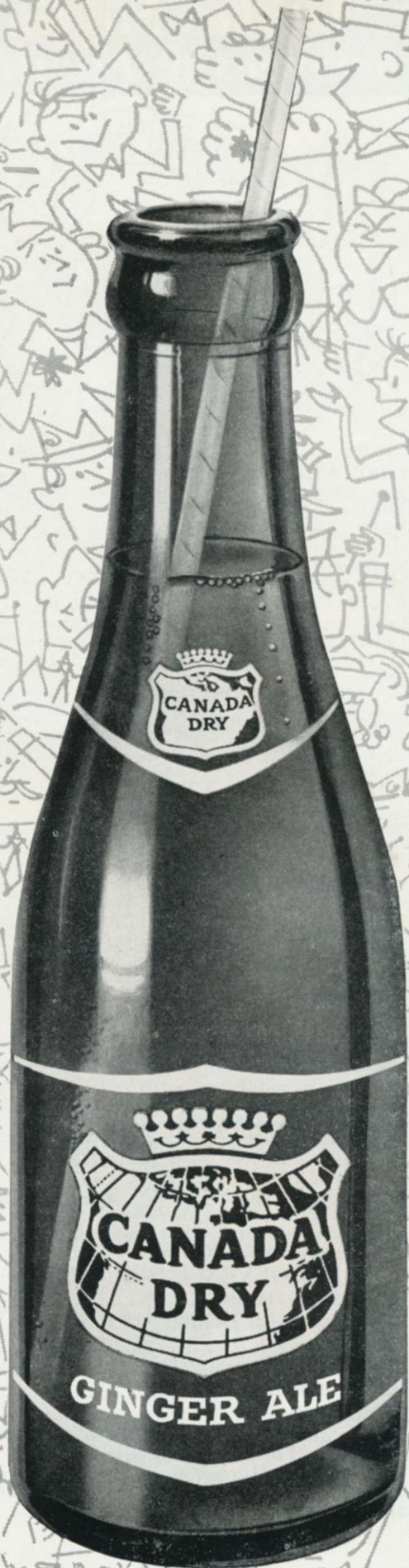
The White Rock Girl stays so popular because the brand she represents satisfies so completely! Thanks to *Superior carbonation*, a White Rock drink keeps sparkling from the first pour to the last sip. So for a lighter-livelier drink every time, don't just mix it ... *White Rock it!*





# **Spectating is more sparkling ...with Canada Dry Ginger Ale...**

**So is socializing after the game  
with Canada Dry Ginger Ale  
in your tall drinks.**





# NFL Officials' Signals



Offside



Crawling, Pushing,  
Helping Runner



Illegal Motion



Illegal Pass



Unsportsmanlike  
Conduct



Pass Interference



Holding, Illegal  
Use of Hands



Personal Foul  
(indication of  
offense follows)



Delay of Game,  
Excess Time-Out



Touchdown, Field  
Goal, Extra Point



Safety



Loss of Down



Penalty Declined,  
Incomplete Pass,  
Missed Goal



First Down



Dead Ball



No Time-Out or  
Time In with Whistle



Time-Out

Enjoy  
**MELROSE**  
Whiskey Born Great!



## "A Toast to Greatness"

There's royal pleasure for you in Melrose . . . an incredibly smooth blend selected from our treasured reserves. Rich and mellow—yet light and appealing. Tonight, make yours MELROSE—the toast to greatness.



SUPERLATIVE BLENDED WHISKEY, 86 PROOF, 65% GRAIN NEUTRAL SPIRITS, MELROSE DISTILLERS CO., NEW YORK, N. Y.



# NFL Pairings and Results

Home Team		Visiting Team	
NEW YORK	vs.	PHILADELPHIA	
Won 6, Lost 2		Won 7, Lost 1	
10—St. Louis	21	27—Cleveland	20
17—at Pittsburgh	14	14—Washington	7
24—at Washington	21	27—St. Louis	30
24—at St. Louis	9	21—Pittsburgh	16
31—at Dallas	10	20—at St. Louis	7
24—Los Angeles	14	43—at Dallas	7
16—Dallas	17	27—at Washington	24
53—Washington	0	16—Chicago	14
—Philadelphia	—	—at New York	—
—Pittsburgh	—	—at Cleveland	—
—at Cleveland	—	—Dallas	—
—Green Bay at Milw.	—	—at Pittsburgh	—
—at Philadelphia	—	—New York	—
—Cleveland	—	—at Detroit	—
199	106	195	125

PITTSBURGH	vs.	DALLAS	
Won 3, Lost 5		Won 4, Lost 4	
24—at Dallas	27	27—Pittsburgh	24
14—New York	17	21—Minnesota	7
14—at Los Angeles	24	7—at Cleveland	25
16—at Philadelphia	21	28—at Minnesota	0
20—Washington	0	10—New York	31
28—Cleveland	30	7—Philadelphia	43
20—San Francisco	10	17—at New York	16
17—at Cleveland	13	17—St. Louis	31
—Dallas	—	—at Pittsburgh	—
—at New York	—	—Washington	—
—St. Louis	—	—at Philadelphia	—
—Philadelphia	—	—Cleveland	—
—at Washington	—	—at St. Louis	—
—at St. Louis	—	—at Washington	—
153	142	134	177

ST. LOUIS	vs.	DETROIT	
Won 4, Lost 4		Won 4, Lost 3, Tied 1	
21—at New York	10	17—Green Bay at Milw.	13
17—at Cleveland	20	16—at Baltimore	15
30—at Philadelphia	27	0—San Francisco	49
9—New York	24	17—Chicago	31
7—Philadelphia	20	14—Los Angeles	13
24—at Washington	0	14—Baltimore	17
10—Cleveland	21	28—at Los Angeles	10
31—at Dallas	17	20—at San Francisco	20
—Detroit	—	—at St. Louis	—
—at Baltimore	—	—at Minnesota	—
—at Pittsburgh	—	—Green Bay	—
—Washington	—	—at Chicago	—
—Dallas	—	—Minnesota	—
—Pittsburgh	—	—Philadelphia	—
149	139	126	168

Home Team		Visiting Team	
CHICAGO	vs.	GREEN BAY	
Won 5, Lost 3		Won 6, Lost 2	
13—at Minnesota	37	13—Detroit at Milw.	17
21—at Los Angeles	17	30—San Francisco	10
0—at Green Bay	24	24—Chicago	0
31—at Detroit	17	45—Baltimore	7
24—Baltimore	10	49—at Cleveland	17
31—San Francisco	0	33—at Minnesota	7
21—at Baltimore	20	28—Minnesota at Milw.	10
14—at Philadelphia	16	21—at Baltimore	45
—Green Bay	—	—at Chicago	—
—at San Francisco	—	—Los Angeles	—
—Los Angeles	—	—at Detroit	—
—Detroit	—	—New York at Milw.	—
—Cleveland	—	—at San Francisco	—
—Minnesota	—	—at Los Angeles	—
155	141	243	113

LOS ANGELES	vs.	SAN FRANCISCO	
Won 2, Lost 6		Won 4, Lost 3, Tied 1	
24—at Baltimore	27	35—Washington	3
17—Chicago	21	10—at Green Bay	30
24—Pittsburgh	14	49—at Detroit	0
0—at San Francisco	35	35—Los Angeles	0
13—at Detroit	14	38—at Minnesota	24
14—at New York	24	0—at Chicago	31
10—Detroit	28	10—at Pittsburgh	20
31—Minnesota	17	20—Detroit	20
—San Francisco	—	—at Los Angeles	—
—at Green Bay	—	—Chicago	—
—at Chicago	—	—Minnesota	—
—at Minnesota	—	—at Baltimore	—
—Baltimore	—	—Green Bay	—
—Green Bay	—	—Baltimore	—
133	180	197	128

MINNESOTA	vs.	BALTIMORE	
Won 1, Lost 7		Won 4, Lost 4	
37—Chicago	13	27—Los Angeles	24
7—at Dallas	21	15—Detroit	16
33—at Baltimore	34	34—Minnesota	33
0—Dallas	28	7—at Green Bay	45
24—San Francisco	38	10—at Chicago	24
7—Green Bay	33	17—at Detroit	14
10—Green Bay at Milw.	28	20—Chicago	21
17—at Los Angeles	31	45—Green Bay	21
—Baltimore	—	—at Minnesota	—
—Detroit	—	—St. Louis	—
—at San Francisco	—	—at Washington	—
—Los Angeles	—	—San Francisco	—
—at Detroit	—	—at Los Angeles	—
—at Chicago	—	—at San Francisco	—
135	226	175	198

WASHINGTON	vs.	CLEVELAND	
Won 0, Lost 8		Won 5, Lost 3	
3—at San Francisco	35	20—at Philadelphia	27
7—at Philadelphia	14	20—St. Louis	17
21—New York	24	25—Dallas	7
7—at Cleveland	31	31—Washington	7
0—at Pittsburgh	20	17—Green Bay	49
0—St. Louis	24	30—at Pittsburgh	28
24—Philadelphia	27	21—at St. Louis	10
0—at New York	53	13—Pittsburgh	17
—Cleveland	—	—at Washington	—
—at Dallas	—	—Philadelphia	—
—Baltimore	—	—New York	—
—at St. Louis	—	—at Dallas	—
—Pittsburgh	—	—at Chicago	—
—Dallas	—	—at New York	—
62	228	177	162

## NATIONAL LEAGUE STANDING

### EASTERN CONFERENCE

	W.	L.	T.	Pct.	Pts.	O.P.
Philadelphia	7	1	0	.875	195	125
NEW YORK	6	2	0	.750	199	106
Cleveland	5	3	0	.625	177	162
Dallas	4	4	0	.500	134	177
St. Louis	4	4	0	.500	149	139
Pittsburgh	3	5	0	.375	153	142
Washington	0	8	0	.000	62	228

### WESTERN CONFERENCE

	W.	L.	T.	Pct.	Pts.	O.P.
Green Bay	6	2	0	.750	243	113
Chicago	5	3	0	.625	155	141
Detroit	4	3	1	.571	126	168
San Francisco	4	3	1	.571	197	128
Baltimore	4	4	0	.500	175	198
Los Angeles	2	6	0	.250	133	180
Minnesota	1	7	0	.125	135	226

Robert W. Kelly Publishing Corp. 86

PLEASE USE ENTRANCE RAMP NEAREST YOUR SEAT





Let the winning taste of Seagram's 7 Crown bring its own special satisfaction to a great Autumn day. After the game, say Seagram's and be Sure.



If you smoke for pleasure, not just from habit, discover the great taste of great tobaccos in Chesterfield King. Twenty-one vintage tobaccos are grown mild . . . aged mild . . . blended mild—not filtered mild—to be so truly satisfying. Your pleasure's long and true and filter-free. No wonder "They Satisfy."

**21**  
**GREAT**  
**TOBACCOS**  
make  
**20**  
**WONDERFUL**  
**SMOKES!**

*They Satisfy!*



THE SAME GREAT TOBACCOS ARE IN BOTH REGULAR CHESTERFIELD AND CHESTERFIELD KING