

OFFICIAL PROGRAM • 50 CENTS

YANKEE STADIUM



N.Y.

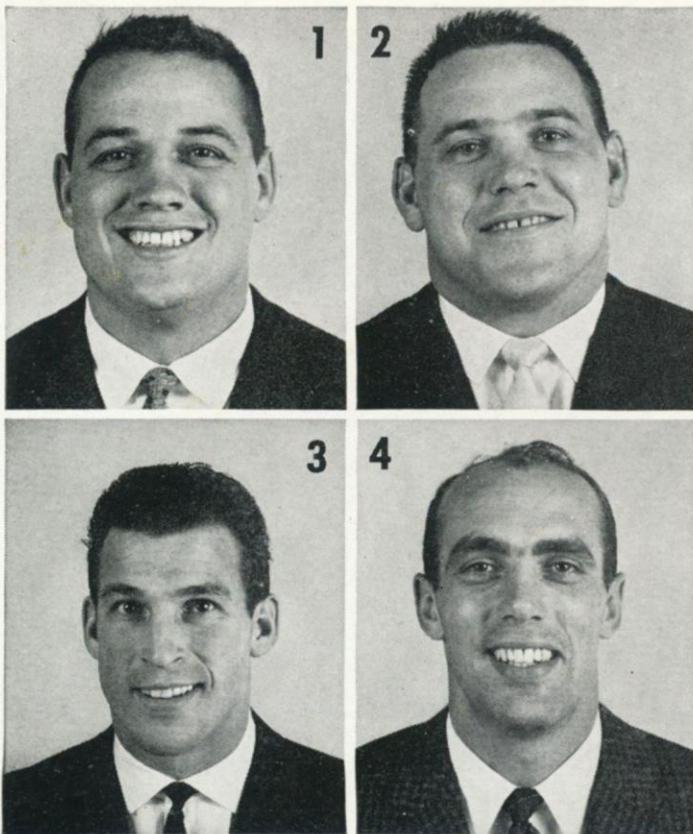
GIANTS

VS.

PITTSBURGH

STEELERS

NOVEMBER 19, 1961



Do you recognize these Marlboro men?

*You should ...
they're all N. Y. Giants
—past or present*



You'll probably recognize Mister "42"—his picture is in just about every Marlboro advertisement you see these days.

One of them is a famous fullback from the prewar days. Remember?

The other four Giants are on the Marlboro team, too. Off-season, they travel all over the country, making new friends for this famous cigarette.

Speaking of new friends, more than 25,000 smokers are switching to Marlboro every month. The reason, of course, is *flavor*. It's the filter cigarette with the unfiltered taste.

Try today's Marlboro and judge for yourself.



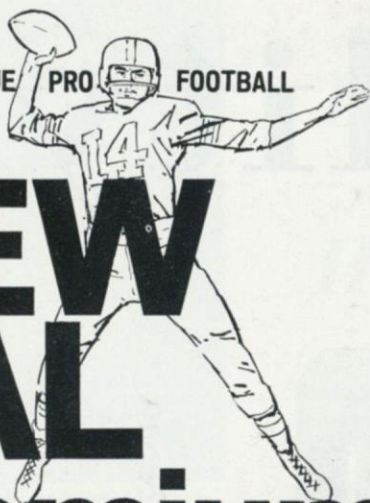
See 8 of the all-time football greats in our Marlboro commercials. This fall, Marlboro is again sponsoring the NFL Pro Football telecasts. Don't miss the commercials—Ken Strong, Charley Conerly, Paul Hornung, Johnny Lujack, Bobby Layne, Jon Arnett, Don Hutson and Frankie Albert will be reliving highlights of their great careers.

You get a lot to like with a **Marlboro**

Answers:

1. Sam Huff
2. Dick Modzelewski
3. Jim Patton
4. Don Chandler
5. Ken Strong
6. Charley Conerly

PAL[®] SPONSORS
NATIONAL LEAGUE
EVERY SUNDAY
CBS-TV

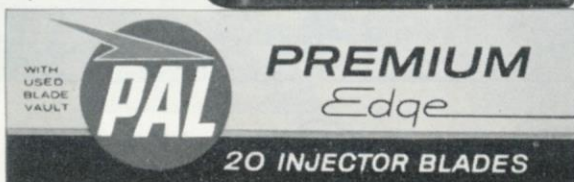


NEW PAL Premium Injector Blades Take friction out of shaving... Put comfort in!

■ New Pal Premium's extra sharp edge rides on microscopic ball bearings. This combination makes New Pal Premium friction-free as a blade can be—and you get 20 blades for only 98¢. United States Testing Company* certifies: Pal Premium Injector Blades... best buy for combined sharpness and durability.



20 FOR 98¢
Fit All
Injector Razors



©1961, American Safety Razor Company, a division of Philip Morris, Inc.
*Independent private testing laboratories

OFFICIAL PROGRAM

NEW YORK GIANTS



vs. PITTSBURGH STEELERS

YANKEE STADIUM • Nov. 19, 1961

Volume 37

Number 6

CONTENTS

Luck Doesn't Just Happen	3
Block! Block! Block!	5
Giant Close-Ups	7 and 11
Browns Here on Dec. 17	9
Giant Jottings	13
Giants-Steelers Series Review	15
Giant Statistics	16
Giant Roster and Line-Ups	18
Steeler Roster and Line-Ups	19
Looking Over the Steelers	21
Steeler Stars	23
NFL News and Notes; NFL Leaders	25
Giant Blackboard: Play Pass	27
Yankee Stadium Services	33
NFL Officials' Signals	35
NFL Pairings and Results	36

New York Football Giants

JOHN V. MARA	President
WELLINGTON T. MARA	Vice-President
TIMOTHY J. MARA	Secretary-Treasurer
RAYMOND J. WALSH	General Manager
AL SHERMAN	Head Coach
JIM LEE HOWELL	Director of Personnel
HARLAND SVARE	Defensive Coach
ANDY ROBUSTELLI	Assistant Defensive Coach
JIM PATTON	Assistant Defensive Coach
ED KOLMAN	Line Coach
KEN KAVANAUGH	End Coach
DON HEINRICH	Backfield Coach
JOHN JOHNSON, SID MORET and JOHN DZIEGIEL	Trainers
DR. FRANCIS SWEENEY	Physician
DR. ARTHUR CROKER	Dentist
DON SMITH	Director of Publicity
DAN RUBIN	Photographer

Cover Illustration by Carol Johnson

This book published by
HARRY M. STEVENS, Inc.
320 Fifth Avenue
New York 1, N. Y.

Quality



Products of *The American Tobacco Company*

"Tobacco IS OUR MIDDLE NAME"



PETE PREVITE had an idea . . .

WITH forceful nudges from Coach Allie Sherman's wheed-up heroes, the football took some wonderful bounces for the Giants last Sunday. The smashing 38-21 victory over the Eagles, which put our boys in a tie with Philadelphia's 1960 NFL champions for Eastern leadership, was a classic of resourcefulness.

Certainly, it was lucky that a bouncing ball hung up long enough for Del Shofner to grab it for the first Giant touchdown . . . that a messed-up end-around double reverse wound up in an 18-yard gain when Shofner flipped to Y. A. Tittle and Yat fired a spur-of-the-moment pass to Bob

Luck Doesn't Just Happen*

**("Luck is the residue of design"—
Branch Rickey, circa 1948)*

Gaiters . . . that Gaiters recovered his own double fumble in the end zone for a touchdown.

But don't forget that it took a lot of hustle for Shofner, Tittle and Gaiters to make those plays. The ball didn't come to them while they were standing around waiting . . . they stalked and pounced on it like tigers.

On the other hand, there was nothing fluky about the brilliant touchdown pass plays to Kyle Rote and Erich Barnes with which the Giants confounded the Eagle defense. On the pass to Rote, the Giants changed their normal pattern and put Rote on the same side as Shofner, who moved in to the slot and ran a decoy course. The pass to Barnes was off a novel spread formation, for which the fleet Barnes and Jim Patton were borrowed from the defense.

The idea of using Barnes and Patton was contributed by Pete Previte of the Giant clubhouse staff. Yes, indeed, all the Giants were hustling.

Nor was there anything fluky about the explosive Giant attack



. . . ALLIE SHERMAN went for it.

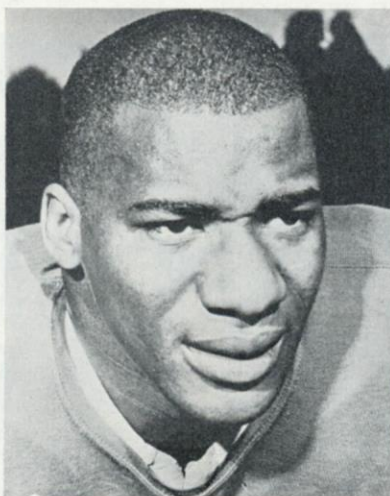
that gained an even quarter of a mile on the ground and through the air, with Alex Webster's thunderous running a co-feature with Tittle's passing . . . about the devastating play of the defensive unit when the game still was up for grabs . . . about Dick Lynch's three pass interceptions and Tom Scott's 65-yard scoring theft.

The great Giant effort left wounds. Dick Nolan, Bill Stits and Jack Stroud suffered injuries that probably will keep them out of action for a while and there were more than the normal number of other bangs and bruises.

But to win in the rough, tough NFL, a team must be willing to pay the price.



TOM SCOTT made TD steal.



ERICH BARNES, in new role.



DICK LYNCH filched three passes.

PLEASE USE ENTRANCE RAMP NEAREST YOUR SEAT

More of 'em...and more in 'em!



NEW FALCON SQUIRE. Brand new for 1962 . . . it's the only compact wagon of its kind! The Falcon Squire brings new sophistication to the compact field. Outside, it has steel side paneling with an elegant woodlike finish. Inside, it is available with bucket seats. And with every Squire; carpeting and power-operated rear window are standard!

1962 FALCON FORDOR WAGON.

For 1962 all eight Falcon wagons offer a choice of engines: the lively 170 Special or an improved version of the famous Falcon Six engine that registered the best gas mileage for a "six" or "eight"



ever recorded in the 25-year history of the Mobilgas Economy Run!

1962 FALCON DELUXE CLUB WAGON.

The new Club Wagons seat eight . . . have twice the room of the biggest full-size wagons . . . yet are priced below most compact wagons!



'62 FORD FALCON WAGONS

Peanuts Characters © 1950 United Feature Syndicate, Inc.

Block! Block! Block!

These recent Giant action pictures by Photographer Ken Regan help lift the shroud of anonymity from those unsung football heroes—the men on the offensive line.



Rosy Brown (79) and Jack Stroud (66) clear the path for Joel Wells (28).



Darrell Dess (62, partly obscured), Stroud (66) and Greg Larson (53) "fire out" to open a hole for Joe Morrison (40), about to take a hand-off from Charlie Conerly (42).



Dess (62) leads Bob Gaiters (35) around end after other bulldozing Giants have levelled the ground.



That man Stroud (66) is about to flatten an obstruction for Alex Webster (29).

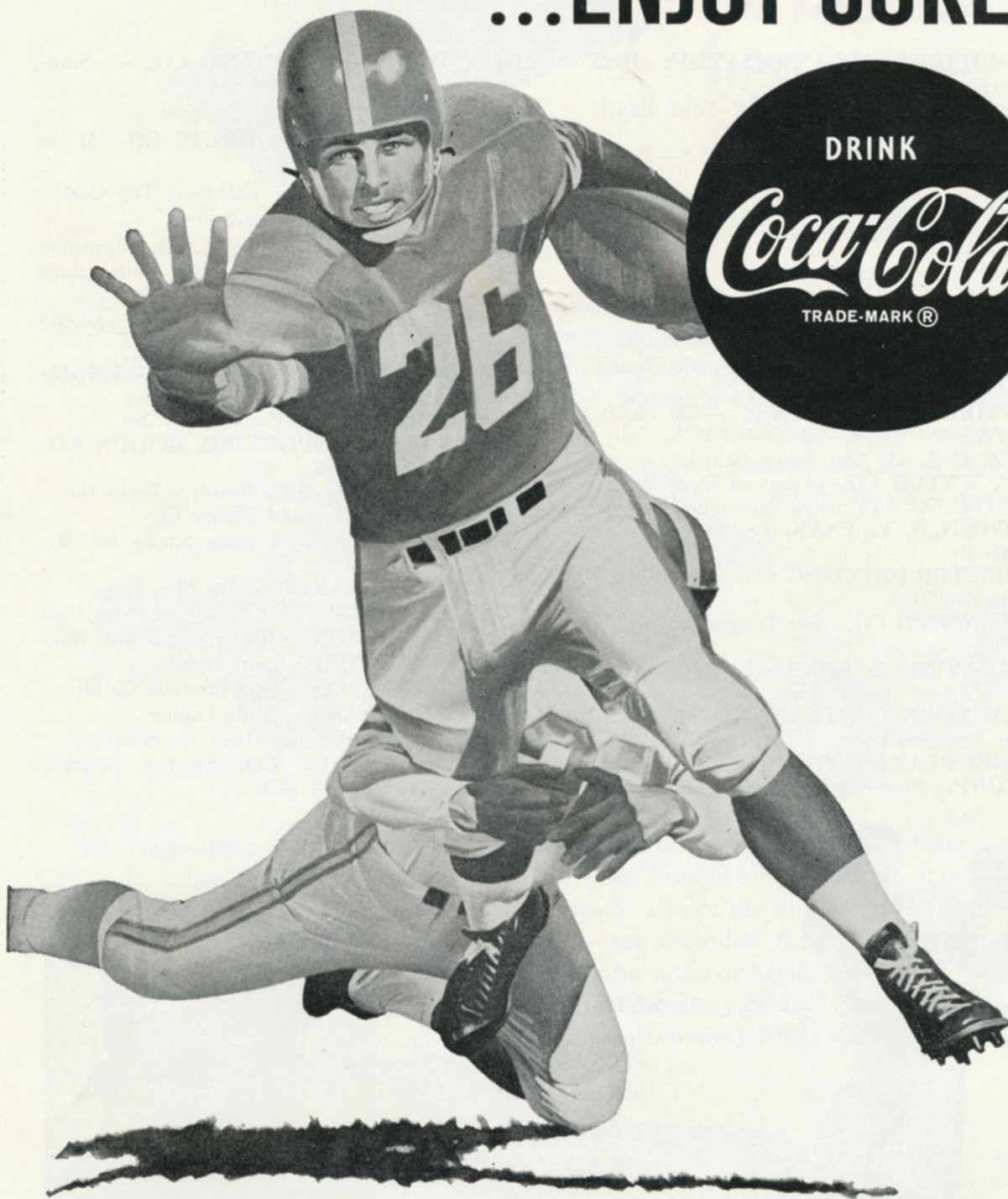


Ray Wietecha (55) and Stroud (66) set up a protective screen for Y. A. Tittle (14) on a pass play.

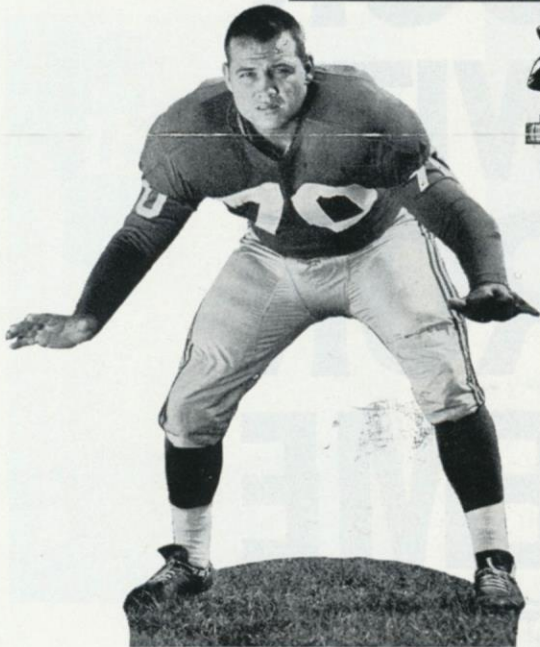


Brown (79) and Larson (53) provide Tittle (14) with that moment he needs to get off a pass.

BE REALLY REFRESHED!
...ENJOY COKE!



Giant Close-Ups



Sam Huff

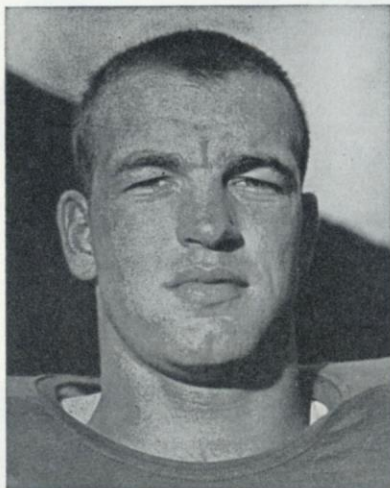
Sam Huff (70) has been an unanimous all-pro selection for the last four of his six years as a Giant. As middle linebacker, the baby-faced West Virginian has been a key spoke in the intractable New York defense. A hard-hitting 230-pounder who ranges from sideline to sideline, Sam delights in a personal challenge. He has authored classics of containment against Jim Brown and other noted NFL fullbacks.



Greg Larson

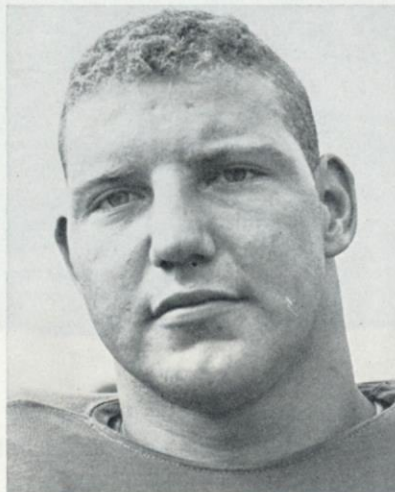


Greg Larson (53), who played center on Minnesota's national collegiate champions of 1960, is one of the best-endowed rookie linemen the Giants have signed in years. The 6 foot 3 inch, 240-pound Golden Gopher stood in brilliantly for Ray Wietecha in a couple of pre-season games and more lately has taken over at offensive right tackle. Greg has all the attributes to become an NFL star.



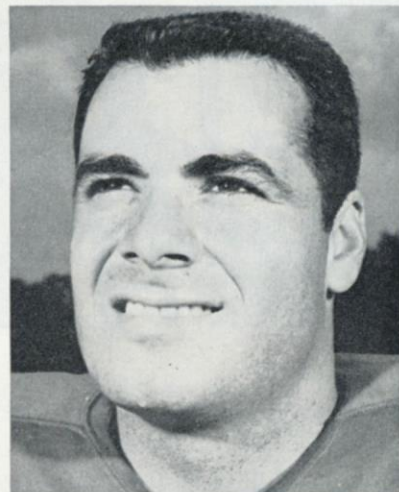
Joe Morrison

Joe Morrison (40), now in his third season with the Giants, is solidly established as the team's top all-purpose back. The 195-pound Cincinnati graduate, who does everything well, was slated to play on the wing in the revamped Giant attack. But he was moved back forced a change in plans. Joe was a behind the ball when circumstances No. 3 draft choice in 1959.



Mickey Walker

Another of the rising young players who have given the 1961 Giants a fresh look is **Mickey Walker (65)**. This stalwart rookie from Michigan State has the makings of a crack offensive guard. At 225 pounds, he's a bit light for the position but he minimizes this handicap by his speed and the tigerish intensity with which he carries out his blocking assignments. He was signed as a free agent.



Joe Walton

Joe Walton (80) is another of the topflight players the Giants have added to their roster since last season. An All-America at Pitt in 1956, he was a first-string offensive end for the Redskins for three seasons. He has moved into the Giant line-up at right end, where he provides solid blocking and sure-handed pass receiving. Joe isn't too fast but has good moves that get him loose.

FILL YOUR TANK WITH CHEVRON SUPREME



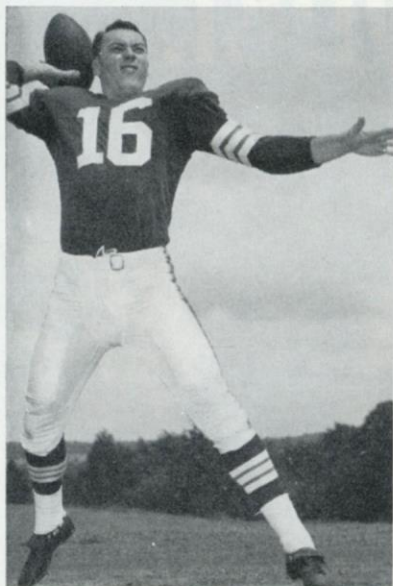
You're always welcome at the Chevron Supreme pump — no matter what you drive! Chevron Supreme brings out the best in cars — particularly those with modern high-compression engines. It delivers all the power and mileage built into these engines. Makes 'em lively and keeps 'em lively. And right next to the Chevron Supreme pump, you'll find RPM Motor Oils . . . the only complete line of oils with ashless detergent! Could you ask for anything more? No. Because you never have to ask for the one other thing you want . . . that superb Chevron service!

***At the sign of the CHEVRON,
we take better care of your car.***



PRODUCTS OF CALIFORNIA OIL COMPANY

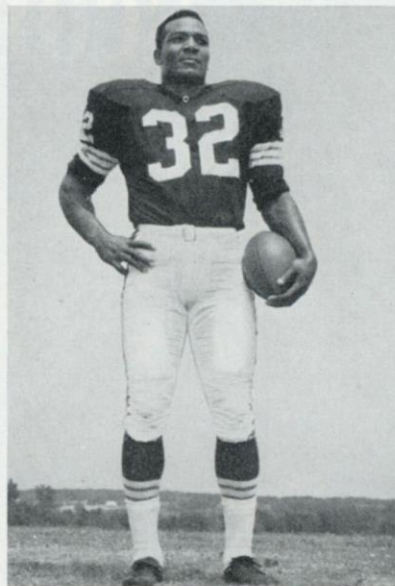
Browns Here on December 17



MILT PLUM



PAUL BROWN



JIMMY BROWN

THE Giants reluctantly leave the Stadium after today's contest for successive road TV (Channel 2) games with the Browns, Packers and Eagles. But they'll be back home four Sundays hence for a

final 1961 go-round against their arch-rivals, the Cleveland Browns.

With the incomparable Jimmy Brown and the rising Milt Plum as their prime movers, aloft and aloft, the Browns have another powerhouse. They'll surely come to town all wheeled up, because Paul Brown, a coach who considers every defeat a personal insult, bristles at the very thought of the indignities that have been heaped on him by the Giants in the past.

The way things stand, the game is likely to have a vital bearing on the Eastern title race, or at least the contest for the Eastern berth

in the NFL Play-Off Bowl. But no special incentive is needed when the Giants and Browns get together. Just put them in the pit together and they'll fight to the death, with or without a football.

COMING GIANT ATTRACTIONS AT STADIUM

Last Home Game
December 17

CLEVELAND BROWNS

with

Jimmy Brown	Bob Gain
Milt Plum	Jim Houston
Lou Groza	Paul Wigger
Gern Nagler	Dave Lloyd
Richie Kreitling	Golen Fiss
Ray Renfro	Walt Michaels
Bobby Crispino	Don Fleming
Mike McCormack	Jim Shofner
Jim Ray Smith	Bob Franklin

TICKET PRICES

\$5.00

**BOX
SEATS**

\$4.00

**RESERVED
SEATS**

Where to Buy Tickets in Person

YANKEE STADIUM
161st St. and River Ave.
Bronx, N. Y.
Mon.-Sat. 9-5 P.M.

YANKEE TICKET OFFICE
North Mezzanine
Grand Central Station
Mon.-Fri., 10-6 P.M.; Sat., 10-4

or

DAVEGA STORES

Hackensack—325 Main Street

Newark—110 Market Street

also

ANDY ROBUSTELLI'S SPORTS SHOP

in Stamford, Conn.

Address Mail Orders to:

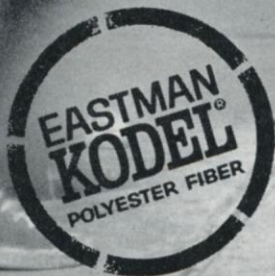
TICKET MANAGER NEW YORK FOOTBALL GIANTS
10 Columbus Circle
New York 19, N. Y.

(Add 50c for mailing and handling)

Make certified check or money order payable:
NEW YORK FOOTBALL GIANTS, INC.

Tickets Now on Sale at Advance Sale Windows in Main Lobby of Stadium

score with KODEL



N. Y. Giants pro football star Dick Lynch has to look good off the gridiron, too. He's for Kodel. This stay-fresh polyester fiber has put first-string crispness and comfort into men's wear. You'll find Kodel in suits, slacks, shirts, ties, rainwear, topcoats . . . in all the clothes that make for America's best-pressed men.

Kodel is the trademark for Eastman polyester fiber. Only the fiber is made by Eastman, not fabrics or clothing.

EASTMAN CHEMICAL PRODUCTS, INC., subsidiary of Eastman Kodak Company, 260 MADISON AVENUE, NEW YORK 16

**Headquarters for men's wear
blended with Kodel**

Broadstreet's

10 Men's Stores in New York and Chicago

Giant Close-Ups



Bob Gaiters



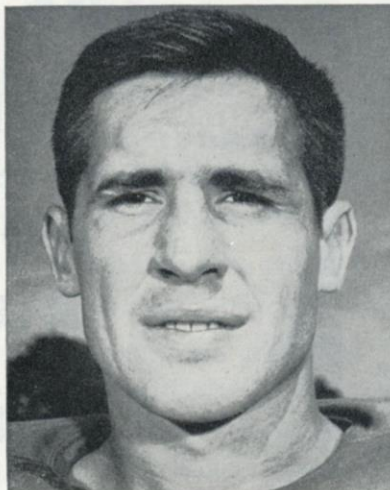
Andy Robustelli

The first player selected by the Giants in last winter's college draft, **Bob Gaiters (35)** has the look of a fellow who is going to make it big as a pro running back. He is one of the fastest Giants and, at 215 pounds, has the power to hit with authority. At New Mexico State last year, Bob led the nation in scoring with 145 points and rushing with 1,338 yards gained, averaging 6.7 yards per try.

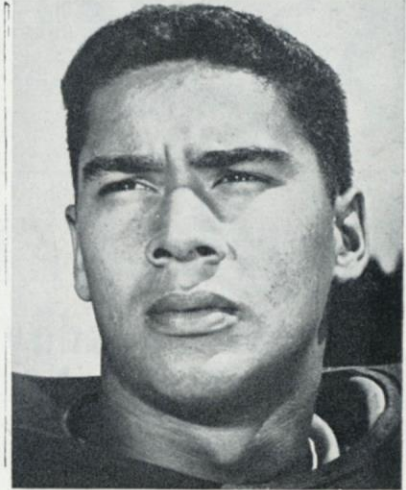
Andy Robustelli (81) has established himself over eleven seasons as one of the NFL's foremost defensive ends. Powerful, quick and heady, he has a rare genius for nipping running plays in the bud and harries opposing passers unmercifully. Andy, who hails from Stamford, Conn., and attended little Arnold College, was acquired from the Rams in 1956 for a future draft choice. It was a good deal. Robustelli is the Giants' defensive captain and also an assistant coach.



Rosy Grier



Bob Simms



Pete Hall

With one season out for military service, big **Rosy Grier (76)** has been a Giant defensive mainstay, at right tackle, since 1955. Although his 6 foot 5 inch frame is generously padded with 290 pounds, he is as quick as a cat on his feet. At Penn State, Rosy also was a champion shotputter and discus thrower. Off the field, he's beginning to make his mark as a singer and has cut several successful records.

Bob Simms (83), a Rutgers contribution to the Giants, has been cast in a new role this season. Used at offensive end as a 1960 rookie, he has been shifted to linebacker. Six-foot-two, 215 pounds and highly mobile, he has been shaping up well and his new post and figures to see a lot of service at the corners. Bob also is a key member of the various special units. He is a hard-hitting blocker and tackler.

Technically, **Pete Hall (12)** is a rookie, this being the first year the Giants have carried him on their in-season roster. Actually, Pete appeared on the scene last year and was carried on the Giants' 1960 "taxi" squad. A quarterback at Marquette, Hall was converted to an offensive end this summer. It was an inspired shift. The position suits him and vice versa. He's tall, fast and has good hands.

MADISON SQ GARDEN

THIS WEEK'S
SPORTS CALENDAR

HOCKEY



Tonight
7 PM

RANGERS
vs
TORONTO

BASKETBALL



Doubleheader
Tuesday
7 PM

KNICKS
vs
CHICAGO

LOS ANGELES
vs
DETROIT

HOCKEY



Wednesday
7:30

Thanksgiving Eve

RANGERS
vs
DETROIT

BASKETBALL



Friday
7:30

KNICKS
vs
LOS ANGELES

Giant Jottings

THERE was a tie for last Sunday's J. P. Stevens award to the outstanding Giant performer on attack against the Eagles. The jury split between Y. A. Tittle and Alex Webster. Tom Scott won the defensive award. The selectees receive a wardrobe of sports clothes. . . . Pat Summerall's five conversion kicks against the Eagles stretched his string to 112 in a row. . . . Jim Lee Howell, scouting college personnel for the Giants, rates Curtis McClinton of Kansas as the best varsity running back he has seen this season.

Today's between-the-halves entertainment will be provided by the New Britain (Conn.) High School band, which put on a grand show here last year. New Britain High, by the way, is the alma mater of Jack White of the Yankee front office. However, Jack thumped opposing tackles rather than the bass drum. . . . Alex Webster has moved into the No. 3 spot on the Giants' all-time ground-gaining list. With 3,262 yards gained through the Eagles' game, Big Red passed Tuffy Lee-

mans (3,117) and is moving up on Eddie Price (3,292) and Frank Gifford (3,674).

Follow the Giants on the road the next three Sundays on CBS-TV (Channel 2), with Chris Schenkel and Johnny Lujack reporting, and/or on WNEW (1130 on your radio dial), with Marty Glickman and Joe Hasel at the mike. . . . Please note also that CBS (Channel 2) will present the NFL's annual Thanksgiving Day classic between the Detroit Lions and Green Bay Packers in New York. . . . Another TV note: Today's Giants-Steelers game will be seen by countless millions of viewers all over the country. Besides being presented as usual by CBS on the Giant out-of-town network, it will be telecast nationally as NBC's NFL game-of-the-week.

Dick and Barry Winik, who take the official movies of Giant games, have two cameras trained on every play. Besides the standard black-and-white films used for coaching and scouting purposes, they shoot the games in color for

post-season editing into "Giant Highlights." This 30-minute feature, on 16mm film with Chris Schenkel providing the sound commentary, will be available free of charge to qualified club, church and school groups shortly after the first of the year. Make your reservations now with Film Department, New York Football Giants, 10 Columbus Circle, New York 19, N. Y.

An old Giant favorite, Bob Schnelker, will be in Steeler uniform today. One of the three players selected from the Giant roster by the new Minnesota Vikings in last winter's NFL stocking draft, Bob recently was traded to Pittsburgh. He had a big game for the Steelers against the Browns two weeks ago, catching 7 passes for 160 yards and scoring the winning touchdown. . . . Quote of the week: "It's nice to meet you in civilian clothes," said Norm Snead of the Redskins to Sam Huff of the Giants at the Giant Touchdown Club luncheon at Leone's following the 53.0 rout of the Redskins.



HOTEL MANHATTAN HEADQUARTERS FOR PROFESSIONAL TEAMS IN NEW YORK CITY

Hotel Manhattan offers 1400 new air conditioned guest rooms, each with television and radio. Known as the "Home of Champions," this magnificent skyscraper hotel is ideally located in the heart of Times Square. Meet your friends at the popular Playbill Restaurant for cocktails, luncheon, dinner and supper.

Express Subway Trains Speed You to
Yankee Stadium from the Private
Subway Entrance of the Hotel Manhattan

ERWIN O. SCHEL, Manager
CHARLES J. BORGES, Sports Representative



HOTEL

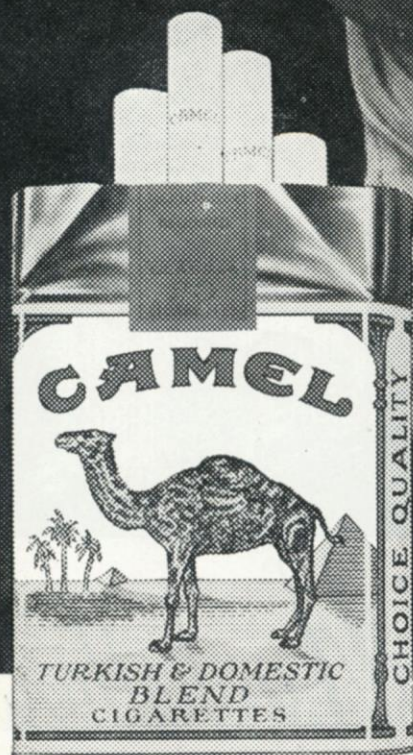
Manhattan
44TH TO 45TH STREETS
AT EIGHTH AVENUE • JUDSON 2-0300



Have a real cigarette—have a **CAMEL**

Dick Nolan

PROFESSIONAL FOOTBALL STAR



The best tobacco makes the best smoke!

R. J. Reynolds Tobacco Co., Winston-Salem, N. C.

Series Review

THIS is the fifty-second game between the Giants and the Steelers in a rivalry that dates back to 1933. The New Yorkers hold a 30-19-2 edge but those figures hardly are representative of the type of games that these teams usually play against each other.

Take the last three contests—all won by the Giants. Working backward, the scores were 17-14, 27-24 and 19-17. In 1959, the teams split, Pittsburgh winning by 14-9 and New York by 21-16.

Foregetting the over-all series tally, how could anyone ask for closer competition than these recent games produced? More of the same can be expected today.

The complete series record:

1933—Giants 23, Steelers 2	1940—Giants 10, Steelers 10
h Giants 27, Steelers 3	h Giants 12, Steelers 0
1934—Giants 14, Steelers 12	1941—Giants 37, Steelers 10
h Giants 17, Steelers 7	h Giants 28, Steelers 7
1935—Giants 42, Steelers 7	1942—Steelers 13, Giants 10
h Giants 13, Steelers 0	h Steelers 17, Giants 9
1936—Steelers 10, Giants 7	1945—Giants 34, Steelers 6
1937—Giants 10, Steelers 7	h Steelers 21, Giants 7
h Giants 17, Steelers 0	1946—Giants 17, Steelers 14
1938—Giants 27, Steelers 14	h Giants 7, Steelers 0
h Steelers 13, Giants 10	1947—h Steelers 38, Giants 21
1939—Giants 14, Steelers 7	Steelers 24, Giants 7
h Giants 23, Steelers 7	

1948—h Giants 34, Steelers 27	1955—Steelers 30, Giants 23
Steelers 83, Giants 28	h Steelers 19, Giants 17
1949—Steelers 28, Giants 7	1956—h Giants 38, Steelers 10
h Steelers 21, Giants 17	Giants 17, Steelers 14
1950—Giants 18, Steelers 7	1957—h Giants 35, Steelers 0
h Steelers 17, Giants 6	Steelers 21, Giants 10
1951—Giants 13, Steelers 13	1958—h Giants 17, Steelers 6
h Giants 14, Steelers 0	Steelers 31, Giants 10
1952—Steelers 63, Giants 7	1959—Giants 21, Steelers 16
1953—Steelers 24, Giants 14	h Steelers 14, Giants 9
h Steelers 14, Giants 10	1960—Giants 19, Steelers 17
1954—Giants 30, Steelers 6	h Giants 27, Steelers 24
h Giants 24, Steelers 3	1961—Giants 17, Steelers 14

GIANTS vs. ALL OPPONENTS

Opponent	W.	L.	T.	Pts.	Opp. Pts.
Baltimore Colts	2	3	0	88	102
Chicago Bears	14	20	2	451	554
Cleveland Browns	11	12	1	389	430
Dallas Cowboys	1	1	1	78	58
Detroit Lions	5	8	1	177	285
Green Bay Packers	15	14	2	425	396
Los Angeles Rams	4	7	0	232	238
Philadelphia Eagles	34	20	1	1049	859
Pittsburgh Steelers	30	19	2	925	726
St. Louis Cardinals	30	10	0	924	624
San Francisco 49ers	3	1	0	99	81
Washington Redskins	33	16	2	1080	799

FOR THE **Fastest, Smoothest Shaves Possible...**

Johnny Unitas

Star Quarterback of
the Baltimore Colts,
reveals his shaving secret!

Get Palmolive
Rapid-Shave

Super-Moisturized Lather
Soaks Whiskers With 17
Beard-Softening Ingredients



Rich Rapid-Shave lather is super-moisturized with 17 separate beard-softening ingredients that start to work on contact.



Rapid-Shave sets you up for a fast shave... a smooth shave... a comfortable shave from start to finish.



MENTHOL



REGULAR



SPICE

MAKE IT FAST AND MAKE IT SMOOTH—
USE RAPID-SHAVE IN THE MORNING!

Giant Statistics

NINE-GAME TEAM RECORD

GIANTS	OPPONENTS
70 First downs, rushing	51
100 First downs, passing	64
8 First downs, penalty	9
178 Total first downs	124
2,904 Total yards gained	2,286
1,272 Yards gained, rushing	1,076
1,632 Yards gained, passing	1,210
299 Number of rushes	272
277 Number of passes	241
136 Passes completed	106
20 Passes had intercepted	23
44.5 Punting average	44.1
33 Punts returned	21
7.7 Punt return average	8.1
23 Kick-Offs returned	38
21.4 Kick-Offs return average	21.7
40 Penalties	41
403 Yards penalized	402
10 Fumbles lost	16

INDIVIDUAL STATISTICS

SCORING

	TD-R	TD-P	TDs	PAT	FG	Pts.
Summerall	0	0	0	29-29	10-23	59
Shofner	0	8	8	0	0	48
Rote	0	5	5	0	0	30
Gaiters	2	1	3	0	0	18
Webster	1	2	3	0	0	18
Morrison	1	1	2	0	0	12
Barnes	1	1	2	0	0	12
Title	1	0	1	0	0	6
Hayes	1	0	1	0	0	6
Huff	1	0	1	0	0	6
Patton	1	0	1	0	0	6
Wells	1	0	1	0	0	6
Scott	1	0	1	0	0	6

PASSING

	Att.	Comp.	Int.	Yds.	L.G.	TDs.	Pct.
Title	178	97	11	1,315	62	12	.545
Conerly	78	33	7	437	37	4	.423
Grosscup	20	5	2	87	32	1	.250
Gaiters	1	1	0	6	6	1	1.000

RUSHING

	Att.	Yds.	L.G.	Avg.
Webster	115	593	59	5.2
Gaiters	73	318	29	4.4
Wells	41	131	17	3.2
Title	14	57	22	4.0
Webb	6	51	21	8.5
Morrison	33	48	14	1.5
Chandler	1	30	30	30.0
Conerly	9	15	9	1.7
Grosscup	2	10	10	5.0
Shofner	1	6	6	6.0

RECEIVING

	P.C.	Yds.	L.G.	TDs.
Shofner	46	722	44	8
Rote	33	486	48	5
Walton	19	289	37	0
Webster	11	128	59	2
Mor'son	11	67	16	1
Gaiters	9	47	14	1
Wells	4	22	19	0
Hall	2	22	20	0
Barnes	1	62	62	1

PUNT RETURNS

	No.	Yds.	L.G.
Stits	17	132	20
Webb	5	78	30
Wells	10	45	11
Morrison	1	0	0

INTERCEPTIONS

	No.	Yds.	L.G.
Lynch	7	48	36
Barnes	6	160	102
Patton	5	99	51
Huff	2	13	13
Livingston	2	0	0
Scott	1	65	65

KICK-OFF RETURNS

	No.	Yds.	L.G.
Gaiters	7	198	49
Wells	8	154	21
Stits	4	87	30
Webb	3	34	11
Morrison	1	21	21

PUNTING

	No.	Avg.	Lggt.
Chandler	42	44.5	66

"He tried to take my
Drake's
COOKIES"



Sponsored by: P. Ballantine & Sons/Howard Clothes/L&M Cigarettes/Parks Sausage.



**If you want to know what's really happening on the field,
listen to the Giants on WNEW Radio.**

Team: New York Football Giants. **Station:** WNEW Radio (1130 on your dial).
Place: All Giant games (home and away). **Play-by-play:** Marty Glickman,
Al DeRogatis and Joe Hasel. **Pre-game show:** Kyle Rote. **Post-game show**
(direct from locker room): Kyle Rote and guests. Be sure to stay tuned after
the game. You'll hear what happened, why it happened, how it happened.

(THE ONLY THING BETTER THAN WNEW'S COVERAGE IS TO BE AT THE GAME — WITH A RADIO)

WNEW RADIO

1130 KC / 102.7 FM / A METROPOLITAN BROADCASTING STATION

Giants on Offense

R. H. ROTE (44)	F. B. WEBSTER (29)	Q. B. TITTLE (14)	L. H. GAITERS (35)	KICK-OF 2:05 P.M.
R. E. WALTON (80)	R. T. LARSON (53)	R. G. SMITH (61)	C. WIETECHA (55)	L. G. DESS (62)
			L. T. BROWN (79)	L. E. SHOFNER (85)
				CARP

Steelers on Defense

L. E. MICHAELS (79)	L. T. KRUPA (75)	M. L. B. POTTIOS (66)	R. T. LIPSCOMB (76)	R. E. STAUTNER (70)
L. W. DANIEL (44)	L. L. B. HENRY (37)	L. S. BUTLER (20)	R. S. SIMPSON (47)	R. W. SAMPLE (24)
			R. L. B. REGER (50)	

NEW YORK GIANTS ROSTER

No.	Name	Position	Weight	Height	Age	College	Yrs. Pro.
11	Grosscup, Lee	QB	185	6:01	24	Utah	2
12	Hall, Pete	OE	200	6:03	23	Marquette	1
14	Tittle, Y. A.	QB	195	6:01	34	Louisiana State	10
20	Patton, Jim	DHB	185	5:10	29	Mississippi	7
21	Webb, Allan	D-OHB	180	5:10	27	Arnold	1
22	Lynch, Dick	DHB	200	6:01	25	Notre Dame	4
25	Nolan, Dick	DHB	185	6:01	29	Maryland	8
28	Wells, Joel	OHB	198	6:01	26	Clemson	1
29	Webster, Alex	OHB	220	6:03	30	North Carolina State	7
34	Chandler, Don	K-HB	205	6:02	26	Florida	6
35	Gaiters, Bob	OHB	215	5:11	23	New Mexico State	1
40	Morrison, Joe	OHB	212	6:01	23	Cincinnati	3
42	Conerly, Charlie	QB	185	6:01	40	Mississippi	14
44	Rote, Kyle	OE	200	6:01	34	Southern Methodist	11
48	Stits, Bill	D-OHB	190	6:00	29	U. C. L. A.	9
49	Barnes, Erich	DHB	198	6:03	26	Purdue	4
52	Hayes, Larry	LB	230	6:03	26	Vanderbilt	1
53	Larson, Greg	OT	240	6:02	22	Minnesota	1
55	Wietecha, Ray	C	230	6:01	32	Northwestern	9
61	Smith, Zeke	OG-LB	235	6:02	25	Auburn	2
62	Dess, Darrell	OG	245	6:00	26	North Carolina State	4
65	Walker, Mickey	OG	225	6:00	22	Michigan State	1
66	Stroud, Jack	OG	255	6:01	32	Tennessee	9
70	Huff, Sam	LB	230	6:01	26	West Virginia	6
72	Janerette, Charlie	OT	250	6:03	22	Penn. State	2
75	Katcavage, Jim	DE	240	6:03	26	Dayton	6
76	Grier, Roosevelt	DT	290	6:05	28	Penn. State	6
77	Modzelewski, Dick	DT	260	6:00	30	Maryland	9
79	Brown, Roosevelt	OT	255	6:03	28	Morgan State	8
80	Walton, Joe	OE	205	5:11	25	Pittsburgh	5
81	Robustelli, Andy	DE	230	6:01	33	Arnold College	11
82	Scott, Tom	LB	220	6:02	31	Virginia	9
83	Simms, Bob	LB	225	6:01	23	Rutgers	2
85	Shofner, Del	OE	185	6:03	26	Baylor	5
88	Summerall, Pat	K-OE	220	6:04	31	Arkansas	10
89	Livingston, Cliff	LB	215	6:03	30	U. C. L. A.	8

GIANT SPECIAL

PAT, FG and Kick-Offs—S
Chandler (34)
Punting—Chandler (34),
Holding for PAT, FG—C
Grosscup (11)
Kick Returns—Stits (48),

OFFICIALS

Referee

(3) William Downes, III

Umpire

(12) Cletus Gardner, V

Linesman

(31) Charles F. Berry,

Back Judge

(24) Bruce Alford, Texa

Field Judge

(32) James Tunney, O

STEELER SPECIAL

Punting—Green
PAT, FG and Kick-Offs—
Layne (22) Tracy
Holding for PAT, FG—
Kick Returns—Sample (24)
Keys (26), Haley

PLEASE USE ENTRANCE RAMP

When it's Calvert Whiskey is delicious



KICK-OFF
2:05 P.M.

Steelers on Offense

(85) R. H. CLEMENT (28) F. B. SCALES (34) Q. B. BUKICH (10) L. H. TRACY (30)
R. E. CARPENTER (40) R. T. BRADSHAW (71) R. G. NISBY (65) C. NUTTER (51) L. G. STEHOUWER (68) L. T. JAMES (77) L. E. DIAL (84)

Giants on Defense

(24) L. E. KATCAVAGE (75) L. T. MODELEWSKI (77) M. L. B. HUFF (70) R. T. GRIER (76) R. E. ROBUSTELLI (81)
L. H. BARNES (49) L. L. B. LIVINGSTON (89) L. S. WEBB (21) R. S. PATTON (20) R. L. B. SCOTT (82) R. H. LYNCH (22)

PITTSBURGH STEELERS ROSTER

NT SPECIALISTS

Kick-Offs—Summerall (88),
Chandler (34).
Chandler (34), Shofner (85).
PAT, FG—Conerly (42),
Grosscup (11).
Stits (48), Gaiters (35)

OFFICIALS

Referee
m Downes, Illinois Tech.

Umpire
us Gardner, Villanova.

Linesman
rles F. Berry, Lafayette.

Back Judge
Alford, Texas Christian.

Field Judge
es Tunney, Occidental.

ELER SPECIALISTS

ting—Green (89).
d Kick-Offs—Michaels (79),
ne (22) Tracy (30).
or PAT, FG—Bukich (10).
—Sample (24), Butler (20),
s (26), Haley (27).

No.	Name	Position	Weight	Height	College	Yrs. Pro.
10	Bukich, Rudy	QB	205	6:02	U. S. C.	7
18	Nofsinger, Terry	QB	205	6:04	Utah	1
20	Butler, Bill	HB	185	5:10	Chattanooga	3
22	Layne, Bobby	QB	210	6:02	Texas	14
23	Mack, Bill "Red"	HB	185	5:10	Notre Dame	1
24	Sample, John	HB	200	6:01	Maryland	4
26	Keys, Brady	HB	185	6:00	Colorado State	1
27	Haley, Dick	HB	195	5:10	Pittsburgh	2
28	Clement, Henry	B-E	205	6:03	North Carolina	1
30	Tracy, Tom	HB-FB	205	5:09	Tennessee	6
34	Scales, Charley	FB-HB	215	6:00	Indiana	2
35	Johnson, John Henry	FB	215	6:02	Arizona State (Tempe)	7
37	Henry, Mike	LB	215	6:00	U. S. C.	3
40	Carpenter, Preston	E	195	6:01	Arkansas	4
42	Hoak, Dick	HB	190	5:11	Penn State	1
44	Daniel, Bill	HB	185	5:11	Mississippi State	1
46	Coronado, Bob	E	195	6:01	University of Pacific	1
47	Simpson, Jackie	HB	185	5:11	Florida	4
50	Reger, John	LB	230	6:01	Pittsburgh	5
51	Nutter, Buzz	C	230	6:02	Virginia Polytechnic	8
62	Sandusky, Mike	G	230	6:01	Maryland	5
64	Kapele, John	G	240	6:00	Brigham Young	2
65	Nisby, John	G	230	6:01	College of Pacific	5
66	Pottios, Myron	LB	240	6:02	Notre Dame	1
67	Schmitz, Bob	G	235	6:01	Montana State	1
68	Stehouwer, Ron	T	230	6:02	Colorado State	2
70	Stautner, Ernie	T-E	230	6:02	Boston College	12
71	Bradshaw, Charles	T	254	6:06	Baylor	4
75	Krupa, Joe	T	225	6:02	Purdue	6
76	Lipscomb, Gene	T	288	6:06	Miller H. S. (Det.)	9
77	James, Dan	C-T	285	6:04	Ohio State	3
79	Michaels, Lou	T	235	6:02	Kentucky	4
82	Tarasovic, George	E-LB	245	6:04	Louisiana State	9
84	Dial, Buddy	E-B	195	6:01	Rice	3
88	Schnelker, Bob	E	215	6:04	Bowling Green	9
89	Green, Bobby Joe	Kicker	185	5:11	Florida	2

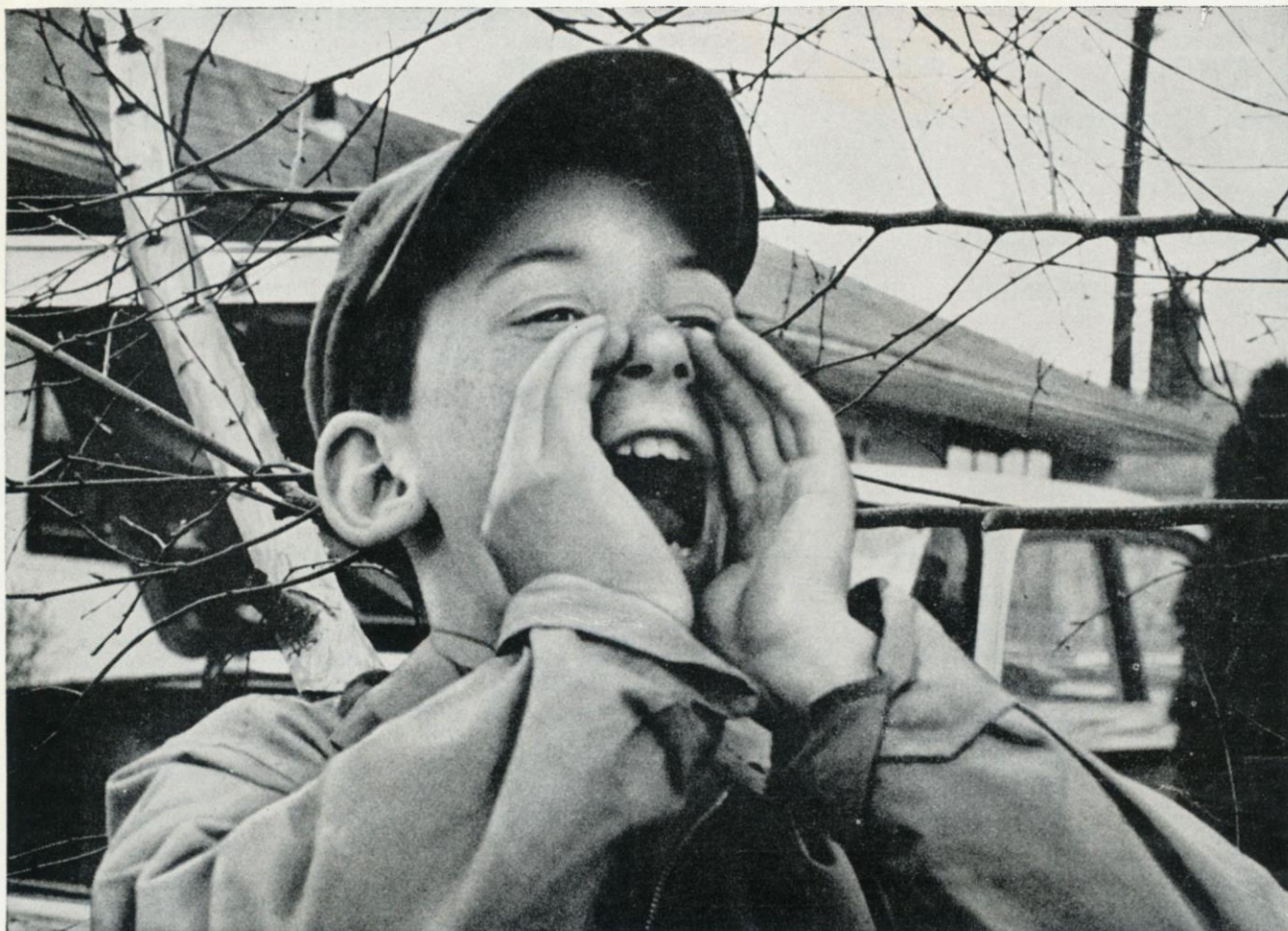
ANCE RAMP NEAREST YOUR SEAT

call for
Calvert Reserve
—the right whiskey for today's taste

"Always Good as Gold"

HOUSE OF CALVERT, LOUISVILLE, KY. • FULL 86 PROOF • BLENDED WHISKEY • 65% GRAIN NEUTRAL SPIRITS.





Newest member of the “Come’n-See-Our-Brand-New-Car” Club

Your family, too, can trade in the old, drive home the new with an Auto Loan from Chemical New York

Their new car has Jimmy jumping, and the rest of the family are just as proud.

From here on, they'll be adding miles to family fun, going places they couldn't visit before. And so can you, if you join the "club". The "club", you see, is just what we call the thousands of families in our area who have financed their cars at Chemical New York.

Why did they come to us? Because we do just about everything but deliver the car.

See a "New York Banker with the hometown touch". At your nearest office of Chemical New York, you'll talk with a "hometown banker". He'll put together an Auto Loan that's planned to fit your budget. One with easy terms at low cost.

Puts you in the driver's seat in "no time flat". Come in today, and tomorrow he'll try to have the check in your hand.

Of course, if you've borrowed before from Chemical New York, you may have your loan in a matter of minutes. So, if you need a loan for a car (or for anything else to make living easier for you and your family), visit "The New York Bank with the hometown touch".

Three of our most popular Auto Loan Plans

Annual cost only \$4.25 per annum per \$100 of loan (deducted in advance)

AMOUNT OF LOAN	AMOUNT YOU RECEIVE	NUMBER OF MONTHS	YOU REPAY MONTHLY
\$1,440	\$1,378.80	12	\$120
	1,317.60	24	60
	1,256.40	36	40
2,160	2,068.20	12	\$180
	1,976.40	24	90
	1,884.60	36	60
3,240	3,102.30	12	\$270
	2,964.60	24	135
	2,826.90	36	90

Chemical Bank Founded
1824
New York Trust Company
The New York Bank with the hometown touch

Looking Over: *The Steelers*



STEELER STALWARTS . . . Bobby Layne handing off to Tom Tracy—a Terrific Twosome.

WHAT with injuries and bad bounces of the football, this hasn't been too happy a season for Owner Art Rooney's Steelers. Barring sensational developments, they have just about been eliminated as a title-contender.

It would be a grievous error, however, to dismiss them lightly. It's been said, too often probably, that on any given day any NFL team can beat any other NFL team. There's nothing trite about the phrase when applied to the Steelers.

The Men of Steel from the Steel City have a tradition of hardnosed football and, b'gosh, no opponent ever is going to beat them just by showing up. Pittsburgh teams, good, bad and indifferent, always play the game to the hilt and Coach Buddy Parker's current Steelers are a good team, which the record belatedly is beginning to show.

Since losing their first four games (two by 3 points, one by 5 points), the Steelers have been mighty hard to shave. They whopped Washington, 20-0; lost a heart-breaker to Cleveland, 30-28; made San Francisco's shotgun backfire, 20-10, then got hunk with the Browns, 17-13, and Dallas, 37-7.

Perfectionist Parker had one prime objective going into this season. That was to rebuild a defense that crumbled into powder last year. He has succeeded. Big Daddy Lipscomb and Lou Michaels, obtained in off-season

trades, have restored vigor to a rushline on which Ernie Stautner remains outstanding, along with Joe Krupa and versatile George Tarasovic.

Mike Pottios, the Notre Dame All-America of 1959-60, has made it big as a rookie at middle line-backer, permitting John Reger to shift back to the right side spot where he excels. Wilbert Scott, another rookie from Indiana, has further bolstered the shallow secondary.

The deep secondary has been completely remodeled. Jackie Simpson and Bill Butler were obtained in trades, the fleet Johnny Sample was picked up after the season opened and Bill Daniel, an impressive newcomer from Mississippi, has been added.

With this solidified defense, the Steelers figured to be a contender going into the campaign, because their attack had as much sting as that of any rival.

As luck would have it, injuries struck down two of their key operatives before the season was hardly under way. Bobby Layne, the great quarterback, played a couple of subpar games with a bad back, then had to beg off. He's on the road back to health and the Steelers hope to have him ready to face the Giants today.

Tom Tracy, the destructive fire-plug halfback who has bedeviled the Giants on so many occasions with his running, passing, pass-catching and place-kicking, was another early casualty. However, he has been reactivated and is

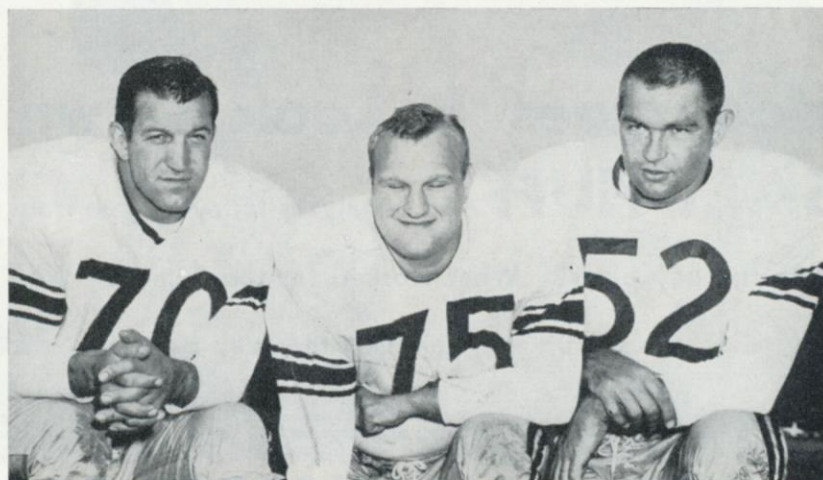


PITTSBURGH PERFECTIONIST... Coach Buddy Parker, who never lets up, on the Steelers or their foes.

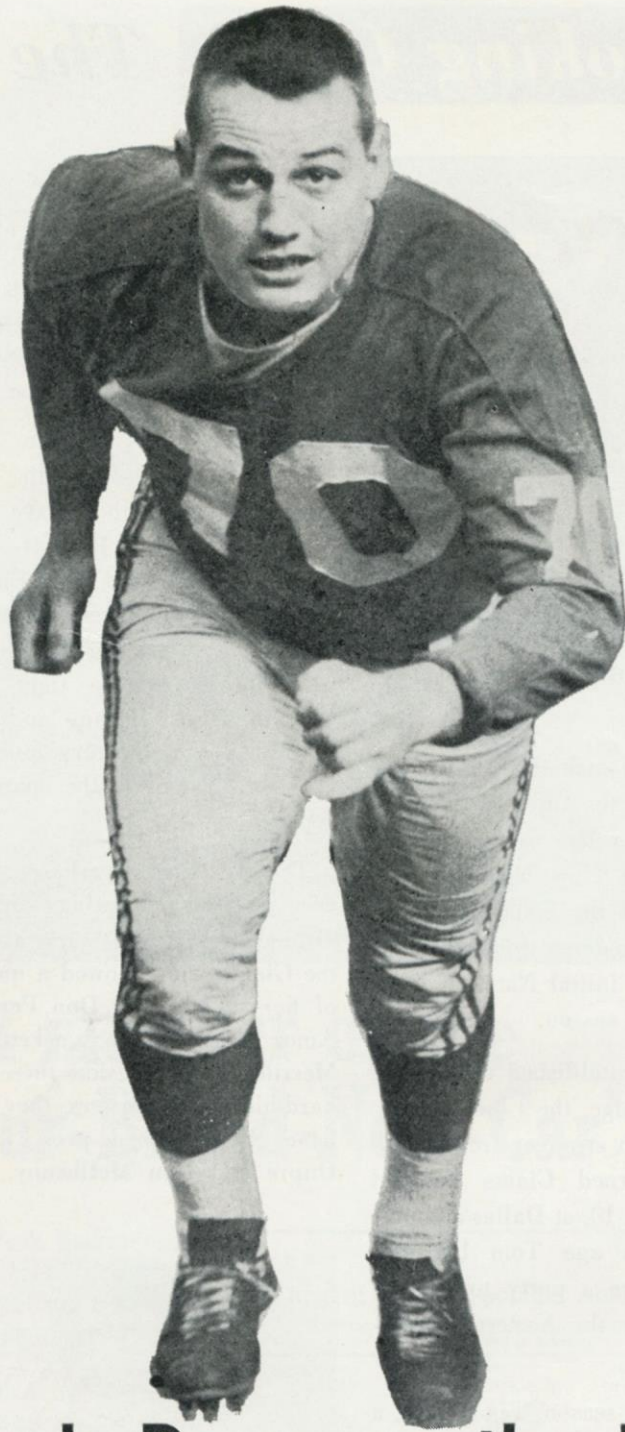
about ready to go full steam ahead.

With John Henry Johnson and Charlie Scales as alternating companions of Tracy, the Steelers generate a lot of running power. With or without Layne, their passing game is dangerous. Rudy Bukich has done an excellent job of standing in for Bobby. They have a super-receiver in Buddy Dial and other good catchers in Pres Carpenter, Bob Schnelker (the former Giant) and the rookies Henry Clement and Dick Hoak.

Up front on the firing line, Pittsburgh has outstanding performers in Madison Nutter at center, Mike Nisby at right guard and Dan James at left tackle. Make no mistake about it—the Steelers are a rough, tough team.



RUGGED RUSHLINERS — Ernie Stautner, Joe Krupa and George Tarasovic help keep the Steelers' furnace stoked up front.

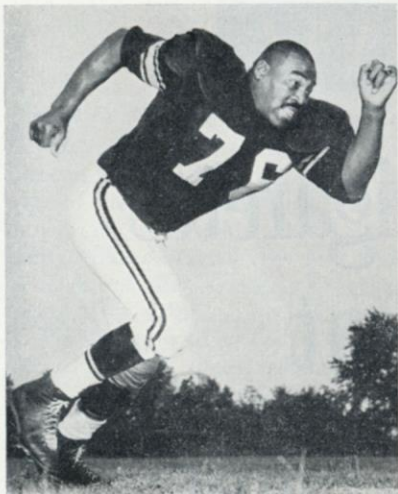


How Does It Look Down on the Field?

SAM HUFF . . . analyzes today's game from the player's point of view. What were the key plays? What worked for the Giants? Who played a particularly good game?

Why did Sam set up the defenses the way he did? **Read Sam Huff's**

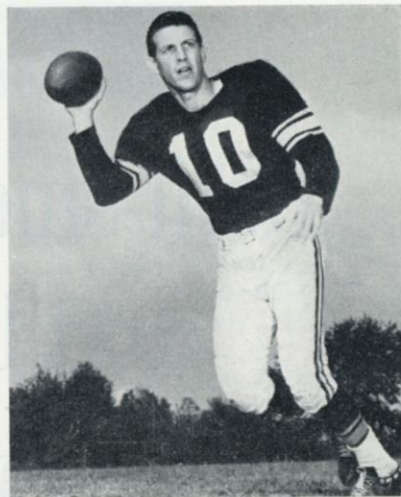
**Analysis — EXCLUSIVE in Tomorrow's
JOURNAL-AMERICAN**



GENE LIPSCOMB



BOBBY JOE GREEN



RUDY BUKICH



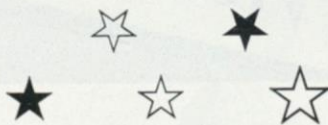
Steeler Stars



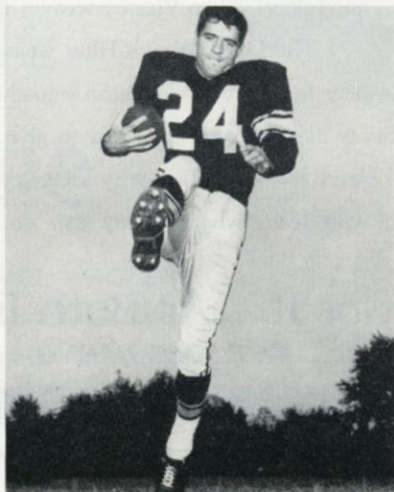
MYRON POTTIOS



JOHNNY SAMPLE



CHARLIE SCALES



DICK HOAK



BILL BUTLER

PLEASE USE ENTRANCE RAMP NEAREST YOUR SEAT

League Leaders!

The Top Bourbon ... Like the Top
Football Team ... has Quality!

J.W. DANT WORLD'S LARGEST SELLING BONDED BOURBON



Take your choice of the two Kentucky favorites—Dant 100 Proof Bottled in Bond or J. W. Dant 86 Proof ... its mild, light, lower-priced partner.

1961 NATIONAL LEAGUE LEADERS

Rushing.....	Brown, Cleveland, 191 for 853 yds.
Passing.....	Starr, Green Bay, 110 of 190 for 1615 yds.
Receiving.....	SHOFNER, NEW YORK, 46 for 722 yds.
Scoring.....	Hornung, Green Bay, 130 pts.
Punting.....	Lary, Detroit, 47.9 yd. avg.
Punt Returns.....	Wood, Green Bay, 10-200 yds.
Kick-Off Returns.....	Studstill, Detroit, 10-341 yds.
Interceptions.....	Sample, Pittsburgh, 8-141 yds.



NFL News and Notes

FORTY-SEVEN trades were made in the National Football League during 1961 and all but nine of the 79 players traded made the grade with their new clubs. Many, like Y. A. Tittle and Del Shofner of the Giants, Prentice Gautt of St. Louis, Johnny Sample of Pittsburgh and Johnny Olszewski of Detroit have played key roles. . . . Yale Lary of Detroit is a member of the Texas Legislature, Dave Middleton of Minnesota is an intern, Chuck Bednarik of Philadelphia is a successful salesman, Eddie LeBaron is a practicing lawyer, Kyle Rote of the Giants is sports director for radio station WNEW. These are just some of the off-season posts held by star NFL players. They have used their association with pro football to further themselves in various professions and business fields. All NFL rosters are dotted with players who are founding successful careers outside of football, many with the help of their front offices. . . . Players in this

year's NFL world championship play-off can look forward to participating in another record players' pool. Last year, the members of the world champion Eagles each received more than \$5,000 for beating the Packers in the title game. Since then, added money for broadcasting rights has increased the potential content of the play-off pot. Benefits aren't

limited to players actually participating in the play-off. All active NFL players share indirectly in the championship game receipts. A portion of the proceeds is set aside for the Player Benefit Plan. . . . The Bert Bell Player Benefit Plan, named after the late NFL commissioner now is in its third year. The plan covers major medical, sickness and accident benefits, group life insurance and future retirement benefits. All active NFL players and their families are covered, although the players pay NO premium. During the plan's first two years in effect, the players received more than \$50,000 to meet medical expenses. One player, who contracted a serious illness during the off-season, received more than \$6,000—money he otherwise would have had to pay himself. The plan is financed by the NFL through receipts of post-season games and business contracts made by the NFL on behalf of the players as a group.

NATIONAL LEAGUE LEADERS

RUSHING

1. Brown, Cleveland _____ 191 for 853 yds.
2. Taylor, Green Bay _____ 138 for 780 yds.
3. Pietrosante, Detroit _____ 132 for 637 yds.

PASSING

1. Starr, Green Bay _____ 110 of 190 for 1615 yds.
2. Jurgensen, Philadelphia _____ 144 of 257 for 2161 yds.
3. Plum, Cleveland _____ 108 of 182 for 1371 yds.

RECEIVING

1. SHOFNER, NEW YORK _____ 46 for 722 yds.
2. Phillips, Los Angeles _____ 45 for 744 yds.
3. Berry, Baltimore _____ 45 for 549 yds.

SCORING

1. Hornung, Green Bay _____ 130 pts.
2. Moore, Baltimore _____ 78 pts.
3. Groza, Cleveland _____ 62 pts.

Enjoy em at the Game and at Home

Here at the Yankee Stadium, reach for MRS. WAGNER'S delicious individual pies. At home, enjoy the fresh-baked goodness of MRS. WAGNER'S family-size pies. Both ways, you're in for real enjoyment.



Why bake when you can buy

Mrs. Wagner's Pies

After
the game,
enjoy
Schenley
the only whisky with whipped-in smoothness



SCHENLEY DISTILLERS CO., N.Y.C. • BLENDED WHISKY, 86 PROOF, 65% GRAIN NEUTRAL SPIRITS

Giant Blackboard: Play Pass

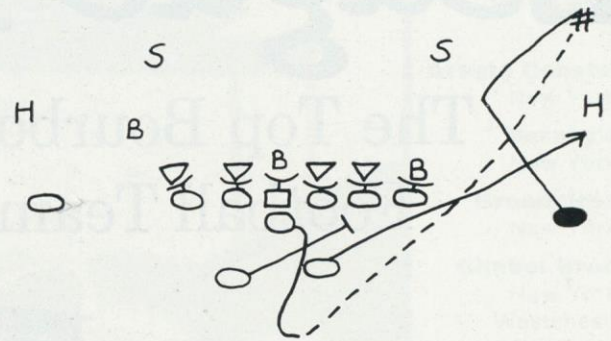
THERE'S more than one way to skin a cat—and launch a forward pass. Most passes are thrown without particular intent to deceive. The quarterback simply drops back and lets fire to one of three or four, or occasionally even five, receivers who deploy in patterns designed to shake a man loose in a defensive blind spot.

Against a vigilant defensive secondary, this method isn't always effective, no matter how skilled the passer and receivers. So other measures have to be taken. For instance, there's the option pass, on which the quarterback or a halfback to whom the ball is delivered has the on-the-spot choice of passing or running.

But the option pass, because of its extemporaneous choice of alternatives, is a scrambling type of play. The ultimate refinement in aerial operations is the play pass, diagrammed herewith.

On a play pass, there's a complete simulation of a standard running play before the overhead strike. The special value of the maneuver is that it withholds the normal keys that alert the defense.

In the example furnished by Don Heinrich, the Giant backfield coach, the Giants proceed, to the point of the pass, exactly as though they were going to run a power play at the opposing left side. With all linemen (including the tight right end who would be part of a normal pass pattern) zone blocking straight ahead, the quarterback wheels out and fakes a hand-off to the left halfback.



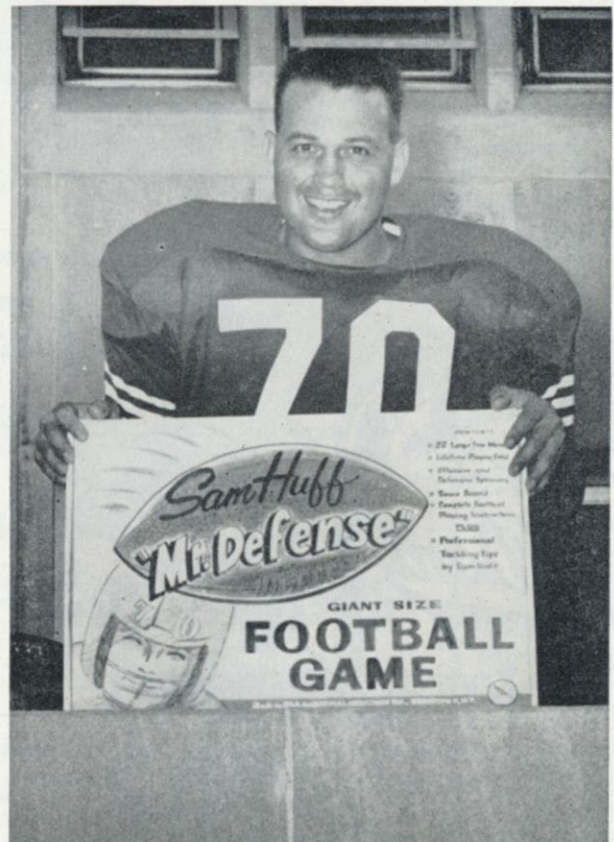
Led by the fullback, the left half slants at tackle, hitting into the hole if the line blocks have stuck, blocking short of the hole if there has been a breakthrough. Just as though it were a running play, the fullback heads on a blocking angle at the defensive left cornerman and the right side flanking back draws a beam on the left safety.

However, the quarterback has kept the ball and now is poised to throw. So the flanker, instead of carrying out his block, makes a sharp cut to the outside to take the pass.

It should be understood that the play pass must be reserved for certain situations—such as first down or second and third down with short yardage. If, for instance, it were to be used on third down with long yardage, the defense hardly could be expected to take the bait.

SAM HUFF'S MR. DEFENSE

- SENSATIONAL NEW FOOTBALL GAME.
- REAL FOOTBALL STRATEGY WITH THE THRILLS OF OFFENSIVE PLAYS AND DEFENSIVE FORMATIONS.
- ON SALE AT ALL LEADING RETAIL OUTLETS.
- THANKS TO THE THOUSANDS OF PEOPLE WHO HAVE MET SAM DURING HIS PERSONAL APPEARANCES—BE SURE TO GET YOUR GAME FOR CHRISTMAS AT KORVETTE'S, KLEIN'S, GRANDWAY STORES, ALEXANDER'S, ROCKAWAY SALES OR BARGAINTOWN.
- IN THE EVENT YOUR FAVORITE STORE IS TEMPORARILY OUT OF "MR. DEFENSE" PLEASE MAIL \$8.00 TO BOX 35, BROOKLYN 11, N. Y. AND THE GAME WILL BE MAILED TO YOU POSTPAID.



MADE BY CARDINAL INDUSTRIES, BROOKLYN 11, N. Y.

League Leaders!

The Top Bourbon ... Like the Top
Football Team ... has Quality!

J.W. DANT WORLD'S LARGEST SELLING BONDED BOURBON

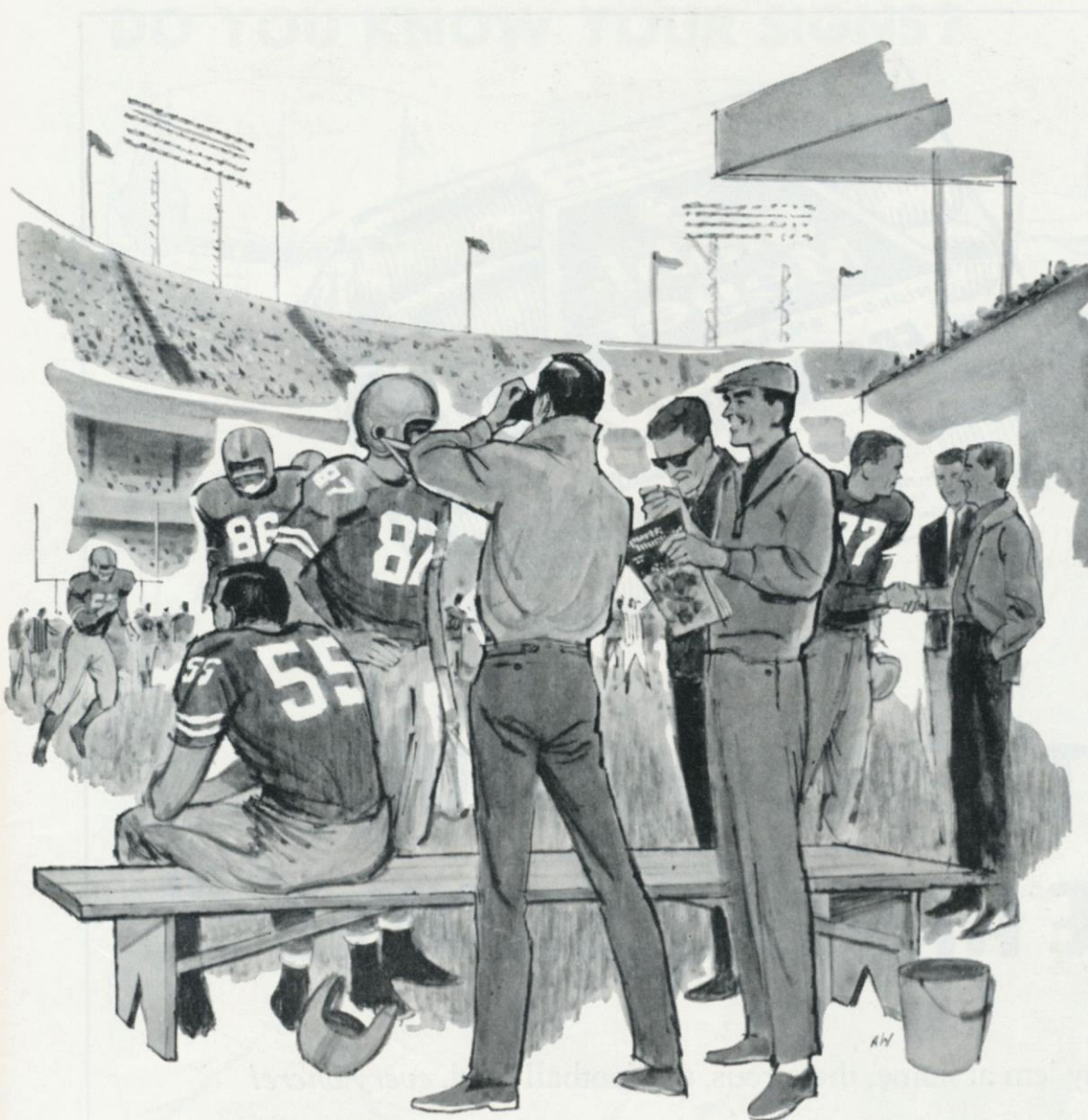


Take your choice of the two Kentucky favorites—Dant 100 Proof Bottled in Bond or J. W. Dant 86 Proof ... its mild, light, lower-priced partner.

1961 NATIONAL LEAGUE LEADERS

Rushing	Taylor, Green Bay, 95 for 564 yds.
Passing	Jurgensen, Philadelphia, 85 of 150-1288 yds.
Receiving	Phillips, Los Angeles, 30 for 543 yds.
Scoring	Hornung, Green Bay, 92 pts.
Punting	Lary, Detroit, 47.7 avg.
Punt Returns	Wood, Green Bay, 7-176 yds.
Kick-Off Returns	Studstill, Detroit, 6-253 yds.
Interceptions	Sample, Pittsburgh, 8-141 yds.





Spectators and players alike enjoy the "extra points" of **NATIONAL FOOTBALL LEAGUE SLACKS**

Both arm-chair athletes and players alike go for slacks made from Official National Football League Slack fabric. They're "built" for action living. Offer the wearer a real "pro" performance in looks, too, because these slacks keep their pressed look wearing after wearing...require a minimum of care. And...only Stevens Consort blend of Orlon® acrylic and wool offers warmth without weight for maximum wearing comfort. Why not make it a point to see them at leading stores listed on this page.



J. P. Stevens & Co., Inc. Fine Fabrics Made in America Since 1813

**At
these fine
stores:**

Arnold Constable Co.

New York

Barney's

New York

Broadstreet's

New York

Gimbel Brothers

New York

Westchester

Valley Stream

Paramus, N. J.

Martins

Brooklyn

Garden City

Babylon

Stern's

New York

Paramus

Paterson, N. J.

John Schoonmaker

& Son, Inc.

Newburgh

Beacon

Middletown

Barron's

Newton, Mass.

Coffin's

Rockland, Maine

Connell's

Middletown, Conn.

J. B. Farrell Co.

Augusta, Maine

Gibblee's

Salem, Mass.

S. Gourse & Sons

Fall River, Mass.

London's

Attleboro, Mass.

McQuade's

Lowell, Mass.

Lawrence, Mass.

Manchester, Mass.

Olken's

Wellesley, Mass.

Prep Shop

Cambridge, Mass.

Puritan Clothing Co.

Hyannis, Mass.

Plymouth, Mass.

Speare's

Nashua, N. H.

M. C. Swift

New Bedford, Mass.

Whiteman's Inc.

Quincy, Mass.

Yale-Genton

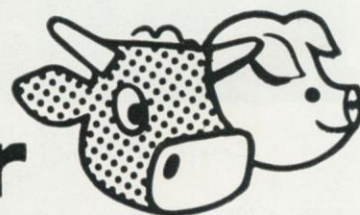
West Springfield, Mass.



"THESE FRANKFURTS ARE HICKORY SMOKED!"

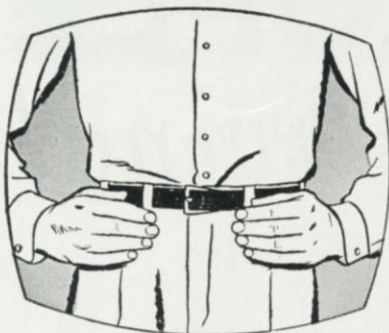
Enjoy 'em at home, the circus, the football field, *everywhere!*
Take your choice—regular or all-beef franks—both are *all meat!* Both deliciously hickory-smoked! Available in jars and cellophane, too. By famous...

Stahl-Meyer

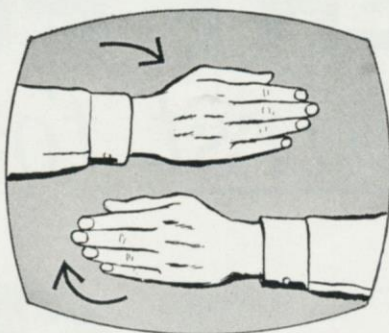


FAMOUS FERRIS HICKORY SMOKED CANNED HAM AND FERRIS BACON ARE TWO MORE FINE PRODUCTS MANUFACTURED AND KITCHEN TESTED BY STAHL-MEYER INC.

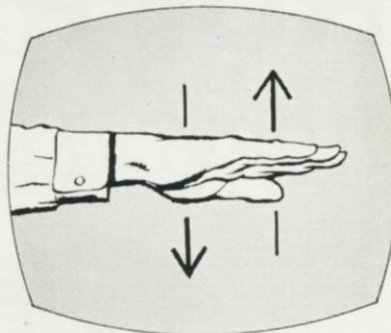
DO YOU KNOW YOUR SIGNS?



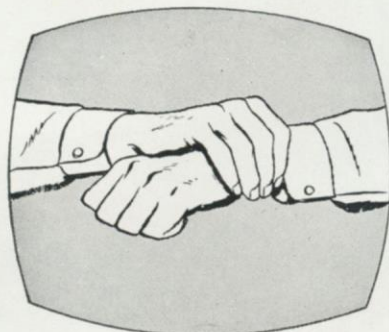
Arms akimbo signal flashed to indicate team off-side.



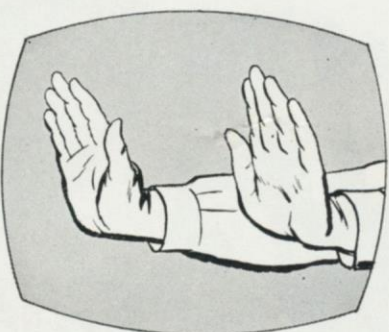
Signal used for illegal position or procedure.



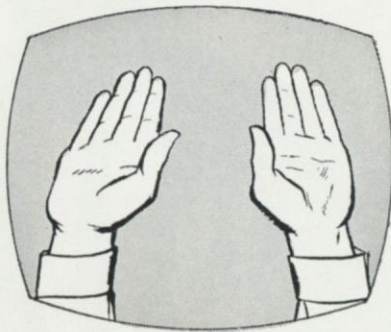
Official indicates player is charged with personal foul.



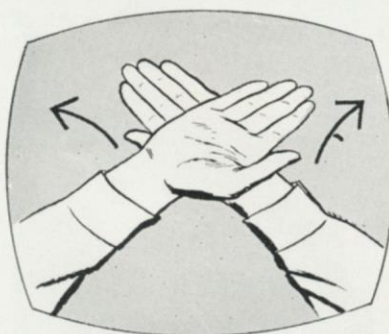
This signal means illegal use of hands or arms.



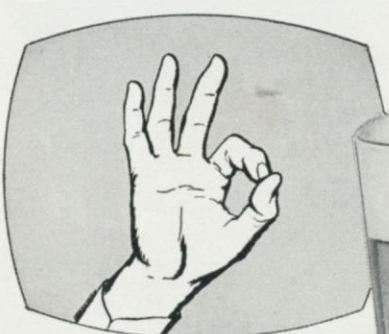
Signal for forward pass or kick catching interference.



Familiar signal for touch-down or field goal.



Team — or official — calls for time out.



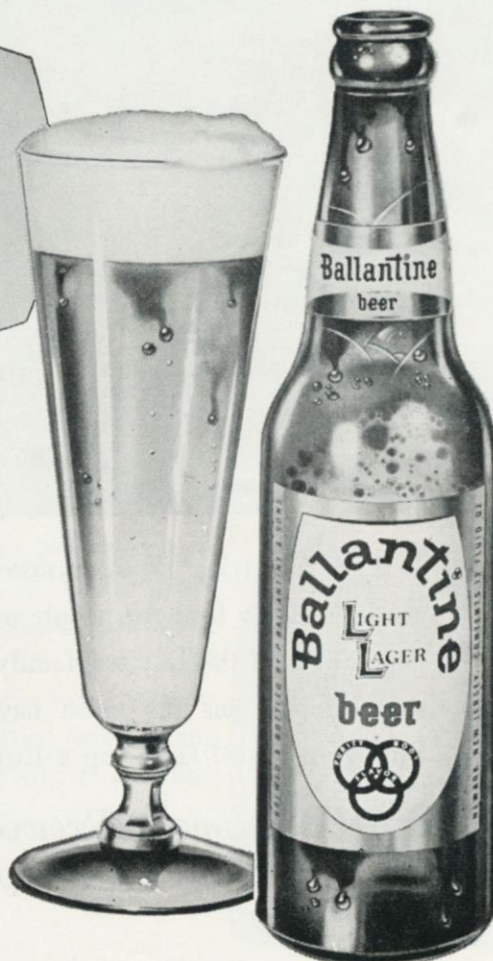
Fan calls for Ballantine beer—the 'crisp' refresher!

Ask the man for **Ballantine beer**

SEE WHY OVER 5 MILLION GLASSES ARE ENJOYED EVERY DAY BY PEOPLE WHO KNOW QUALITY WHEN THEY TASTE IT!



P. BALLANTINE & SONS, NEWARK, N. J.



RUPPERT PEOPLE

have a thirst for living!



A *thirst* for living means a *taste* for Ruppert! Ruppert is the light lively beer for people who live livelier lives. Four generations of the Ruppert family have seen to it *personally* that Ruppert has the finest flavor your money can buy. So live a little! Open up a Ruppert and swallow deep.

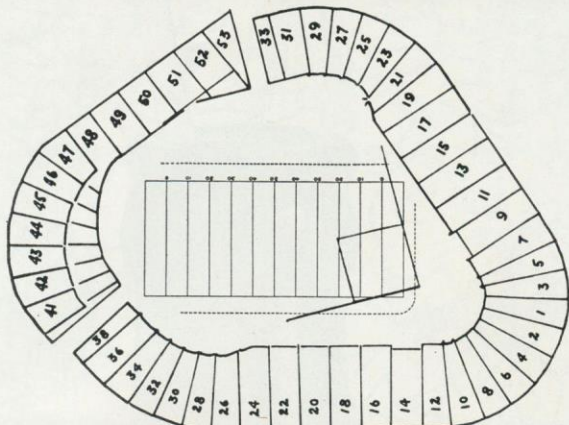
Have a Ruppert! Brewed since 1867 by four generations of the Ruppert family!



*Bright
new
label...
same
fine
Ruppert!*

© 1960, JACOB RUPPERT, NEW YORK CITY

Yankee Stadium Services & Facilities



LOST AND FOUND—Direct inquiries and reports to Jack White, the Stadium Superintendent. Any attendant will direct you to his office.

REST ROOMS—**Men:** Gate 2, Press Gate, Stadium Club (lower, upper), Gate 6; Lower Sections 34, 8, 6, 15, 21, 27; Mezzanine Sections 27, 15, 5, 18, 28; Upper Sections 34, 20, 6, 15, 21; Bleacher Sections 43, 47, 52. **Women:** Gate 2, Gate 4, Stadium Club (lower, upper), Gate 6; Lower Sections 28, 20, 5, 15, 27; Mezzanine Sections 21, 15, 6, 18, 34; Upper Sections 28, 20, 5, 15, 29; Bleacher Sections 47, 52.

PUBLIC TELEPHONES—Gate 2, Gate 4, Press Gate, Stadium Club (lower, upper), Gate 6, Lower Sections 24, 14, 12, 11, 17, 27; Mezzanine Sections 27, 17, 7, 8, 22; Upper Sections 34, 20, 12, 8, 9, 19, 27; Bleacher Sections 41, 49, 51.

PARKING AREAS

YANKEE LOTS

South side 157th St., Ruppert Pl. to Cromwell Ave.
Between Cromwell and River Aves., on 153rd St.
163rd to 164th Sts., between River and Gerard Aves.
151st St. and River Ave., opposite Bronx County Jail.

PRIVATELY-OWNED LOTS

West side Ruppert Pl., between 157th and 158th Sts.
West side River Ave., between 151st and 153rd Sts.
West side River Ave. and 157th St.
East side River Ave., North of 153rd St.
East side River Ave., North of 151st St.
East side River Ave., 164th to 165th Sts.
East side River Ave., South of 162nd St.
Farmer's Square—Cromwell Ave. Roadway, and
West of 151st St. Viaduct, opposite Bronx County Jail.
East 168th St. and River Ave.

GARAGES

Cromwell Ave. and 157th St.
East side of River Ave., South side of 158th St.
East side of River Ave., North side of 157th St.
East side of River Ave., South side of 157th St.
North side of 158th St., between River and Gerard Aves.
East side of River Ave., corner of 168th St.

Also, the Polo Grounds lot again will be in service for all Giant games at the Stadium.

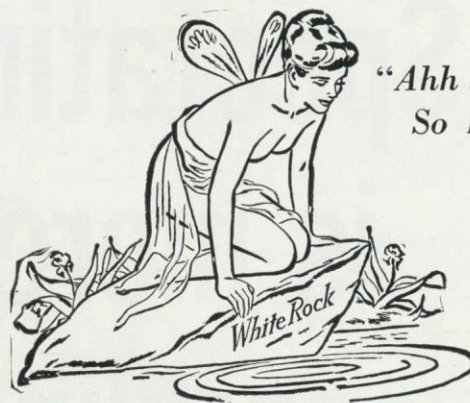
SOUVENIR PRICE LIST

PICTURES (12 Players)	.25
PAST AND PRESENT PICTURES (36 Players)	.50
PENNANT (Large)	1.00
LUCKY MASCOT (Action Doll)	1.00
KNITTED HAT (Colors)	1.50
OFFICIAL TYPE HELMET (All Sizes)	5.00

Souvenir Stands located at Gates 2, 4, 6; Lower Sections 7, 14; Bleacher Sections 43, 50.

These items also are available by mail from Harry M. Stevens, Inc., Souvenir Department, Yankee Stadium, Bronx 51, N. Y.

SEASON AFTER SEASON...



"Ahh ...
So Pure!"

She's New York's Best Girl!

White Rock

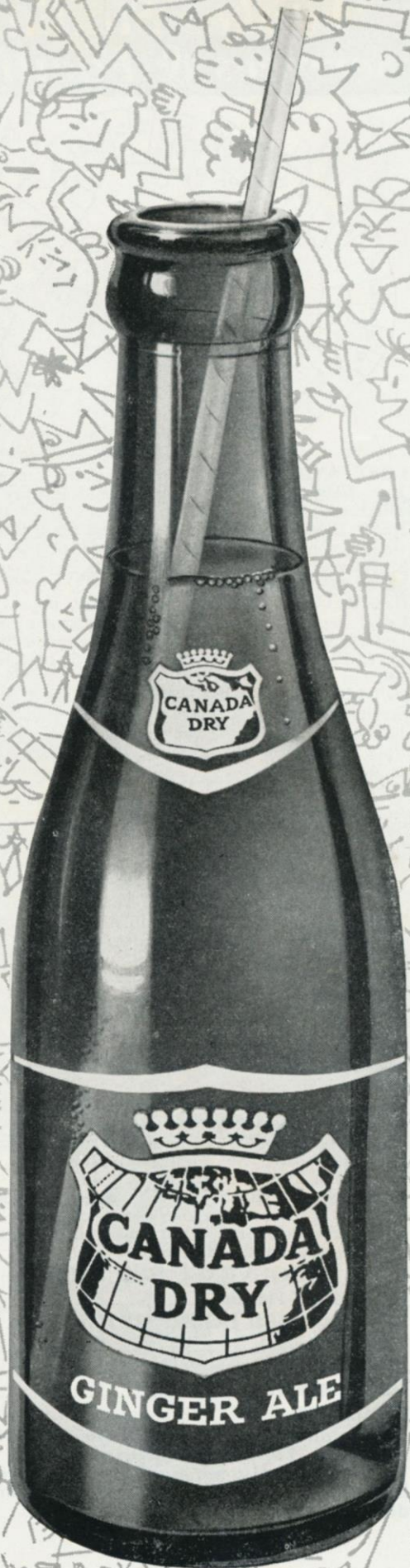
for sparkling fine beverages

The White Rock Girl stays so popular because the brand she represents satisfies so completely! Thanks to *Superior carbonation*, a White Rock drink keeps sparkling from the first pour to the last sip. So for a lighter-livelier drink every time, don't just mix it ... *White Rock it!*



**Spectating
is more
sparkling
...with
Canada Dry
Ginger Ale...**

**So is socializing after the game
with Canada Dry Ginger Ale
in your tall drinks.**



NFL Officials' Signals



Offside



Crawling, Pushing,
Helping Runner



Illegal Motion



Illegal Pass



Unsportsmanlike
Conduct



Pass Interference



Holding, Illegal
Use of Hands



Personal Foul
(indication of
offense follows)



Delay of Game,
Excess Time-Out



Touchdown, Field
Goal, Extra Point



Safety



Loss of Down



Penalty Declined,
Incomplete Pass,
Missed Goal



First Down



Dead Ball



No Time-Out or
Time In with Whistle



Time-Out

Enjoy
MELROSE
Whiskey Born Great!



"A Toast to Greatness"

There's royal pleasure for you in Melrose . . . an incredibly smooth blend selected from our treasured reserves. Rich and mellow—yet light and appealing. Tonight, make yours MELROSE—the toast to greatness.



SUPERLATIVE BLENDED WHISKEY, 86 PROOF, 65% GRAIN NEUTRAL SPIRITS, MELROSE DISTILLERS CO., NEW YORK, N. Y.

NFL Pairings and Results

Home Team NEW YORK

vs.

Visiting Team PITTSBURGH

Won 7, Lost 2

Won 4, Lost 5

10—St. Louis	21	24—at Dallas	27
17—at Pittsburgh	14	14—New York	17
24—at Washington	21	14—at Los Angeles	24
24—at St. Louis	9	16—at Philadelphia	21
31—at Dallas	10	20—Washington	0
24—Los Angeles	14	28—Cleveland	30
16—Dallas	17	20—San Francisco	10
53—Washington	0	17—at Cleveland	13
38—Philadelphia	21	37—Dallas	7
—Pittsburgh	—	—at New York	—
—at Cleveland	—	—St. Louis	—
—Green Bay at Milw.	—	—Philadelphia	—
—at Philadelphia	—	—at Washington	—
—Cleveland	—	—at St. Louis	—
237	127	190	149

CLEVELAND

vs.

PHILADELPHIA

Won 6, Lost 3

Won 7, Lost 2

20—at Philadelphia	27	27—Cleveland	20
20—St. Louis	17	14—Washington	7
25—Dallas	7	27—St. Louis	30
31—Washington	7	21—Pittsburgh	16
17—Green Bay	49	20—at St. Louis	7
30—at Pittsburgh	28	43—at Dallas	7
21—at St. Louis	10	27—at Washington	24
13—Pittsburgh	17	16—Chicago	14
17—at Washington	6	21—at New York	38
—Philadelphia	—	—at Cleveland	—
—New York	—	—Dallas	—
—at Dallas	—	—at Pittsburgh	—
—at Chicago	—	—New York	—
—at New York	—	—at Detroit	—
194	168	216	163

DALLAS

vs.

WASHINGTON

Won 4, Lost 5

Won 0, Lost 9

27—Pittsburgh	24	3—at San Francisco	35
21—Minnesota	7	7—at Philadelphia	14
7—at Cleveland	25	21—New York	24
28—at Minnesota	0	7—at Cleveland	31
10—New York	31	0—at Pittsburgh	20
7—Philadelphia	43	0—St. Louis	24
17—at New York	16	24—Philadelphia	27
17—St. Louis	31	0—at New York	53
7—at Pittsburgh	37	6—Cleveland	17
—Washington	—	—at Dallas	—
—at Philadelphia	—	—Baltimore	—
—Cleveland	—	—at St. Louis	—
—at St. Louis	—	—Pittsburgh	—
—at Washington	—	—Dallas	—
141	214	68	245

NATIONAL LEAGUE STANDING

EASTERN CONFERENCE

	W.	L.	T.	Pct.	Pts.	O.P.
NEW YORK	7	2	0	.778	237	127
Philadelphia	7	2	0	.778	216	163
Cleveland	6	3	0	.667	194	168
Dallas	4	5	0	.444	141	214
Pittsburgh	4	5	0	.444	190	149
St. Louis	4	5	0	.444	163	184
Washington	0	9	0	.000	68	245

WESTERN CONFERENCE

Green Bay	7	2	0	.778	274	141
Detroit	5	3	1	.625	171	182
Chicago	5	4	0	.556	183	172
San Francisco	4	4	1	.500	204	145
Baltimore	4	5	0	.444	195	226
Los Angeles	3	6	0	.333	150	187
Minnesota	2	7	0	.222	163	246

Home Team GREEN BAY

vs.

Visiting Team LOS ANGELES

Won 7, Lost 2

Won 3, Lost 6

13—Detroit at Milw.	17	24—at Baltimore	27
30—San Francisco	10	17—Chicago	21
24—Chicago	0	24—Pittsburgh	14
45—Baltimore	7	0—at San Francisco	35
49—at Cleveland	17	13—at Detroit	14
33—at Minnesota	7	14—at New York	24
28—Minnesota at Milw.	10	10—Detroit	28
21—at Baltimore	45	31—Minnesota	17
31—at Chicago	28	17—San Francisco	7
—Los Angeles	—	—at Green Bay	—
—at Detroit	—	—at Chicago	—
—New York at Milw.	—	—at Minnesota	—
—at San Francisco	—	—Baltimore	—
—at Los Angeles	—	—Green Bay	—
274	141	150	187

BALTIMORE

vs.

ST. LOUIS

Won 4, Lost 5

Won 4, Lost 5

27—Los Angeles	24	21—at New York	10
15—Detroit	16	17—at Cleveland	20
34—Minnesota	33	30—at Philadelphia	27
7—at Green Bay	45	9—New York	24
10—at Chicago	24	7—Philadelphia	20
17—at Detroit	14	24—at Washington	0
20—Chicago	21	10—Cleveland	21
45—Green Bay	21	31—at Dallas	17
20—at Minnesota	28	14—Detroit	45
—St. Louis	—	—at Baltimore	—
—at Washington	—	—at Pittsburgh	—
—San Francisco	—	—Washington	—
—at Los Angeles	—	—Dallas	—
—at San Francisco	—	—Pittsburgh	—
195	226	163	184

SAN FRANCISCO

vs.

CHICAGO

Won 4, Lost 4, Tied 1

Won 5, Lost 4

35—Washington	3	13—at Minnesota	37
10—at Green Bay	30	21—at Los Angeles	17
49—at Detroit	0	0—at Green Bay	24
35—Los Angeles	0	31—at Detroit	17
38—at Minnesota	24	24—Baltimore	10
0—at Chicago	31	31—San Francisco	0
10—at Pittsburgh	20	21—at Baltimore	20
20—Detroit	20	14—at Philadelphia	16
7—at Los Angeles	17	28—Green Bay	31
—Chicago	—	—at San Francisco	—
—Minnesota	—	—Los Angeles	—
—at Baltimore	—	—Detroit	—
—Green Bay	—	—Cleveland	—
—Baltimore	—	—Minnesota	—
204	145	183	172

MINNESOTA

vs.

DETROIT

Won 2, Lost 7

Won 5, Lost 3, Tied 1

37—Chicago	13	17—Green Bay at Milw.	13
7—at Dallas	21	16—at Baltimore	15
33—at Baltimore	34	0—San Francisco	49
0—Dallas	28	17—Chicago	31
24—San Francisco	38	14—Los Angeles	13
7—Green Bay	33	14—Baltimore	17
10—Green Bay at Milw.	28	28—at Los Angeles	10
17—at Los Angeles	31	20—at San Francisco	20
28—Baltimore	20	45—at St. Louis	14
—Detroit	—	—at Minnesota	—
—at San Francisco	—	—Green Bay	—
—Los Angeles	—	—at Chicago	—
—at Detroit	—	—Minnesota	—
—at Chicago	—	—Philadelphia	—
163	246	171	182

Robert W. Kelly Publishing Corp.



98

PLEASE USE ENTRANCE RAMP NEAREST YOUR SEAT




Let the winning taste of Seagram's 7 Crown bring its own special satisfaction to a great Autumn day. After the game, say Seagram's and be Sure.




Expect more, get more, from L&M

more body in the blend
more flavor in the smoke
more taste through the filter



The filter cigarette for people who really like to smoke . . . L&M in the "red-headed" pack or box.

It's the rich-flavor leaf  the longer-aged, extra-cured leaf among L&M's

choice tobaccos . . . that now lets you expect more, and get more, from filter smoking. There's actually more rich-flavor leaf in L&M than even in unfiltered cigarettes. You get more body in the blend,  more flavor in the smoke,  more taste through the filter.  So expect more . . . and get more . . . from filter smoking. Have an L&M . . . the cigarette that smokes heartier as it draws freely through the clean, pure-white Miracle Tip.