

OFFICIAL PROGRAM • 50 CENTS

# YANKEE STADIUM



N.Y.

**GIANTS**

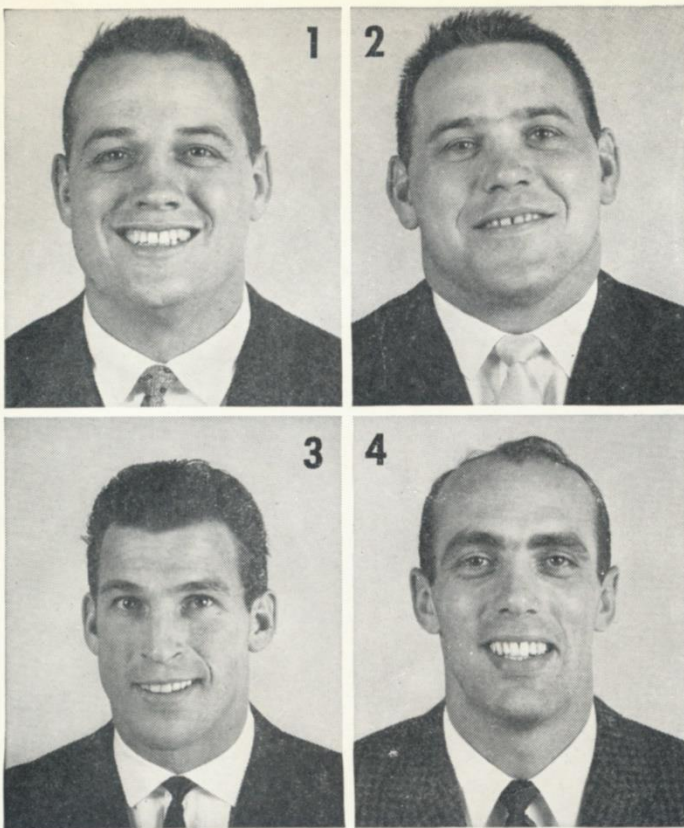
VS.

CLEVELAND

# BROWNS

DECEMBER 17, 1961





# Do you recognize these Marlboro men?



*You should ...  
they're all N. Y. Giants  
—past or present*

You'll probably recognize Mister "42"—his picture is in just about every Marlboro advertisement you see these days.

One of them is a famous fullback from the prewar days. Remember?

The other four Giants are on the Marlboro team, too. Off-season, they travel all over the country, making new friends for this famous cigarette.

Speaking of new friends, more than 25,000 smokers are switching to Marlboro every month. The reason, of course, is *flavor*. It's the filter cigarette with the unfiltered taste.

Try today's Marlboro and judge for yourself.



See 8 of the all-time football greats in our Marlboro commercials. This fall, Marlboro is again sponsoring the NFL Pro Football telecasts. Don't miss the commercials—Ken Strong, Charley Conerly, Paul Hornung, Johnny Lujack, Bobby Layne, Jon Arnett, Don Hutson and Frankie Albert will be reliving highlights of their great careers.

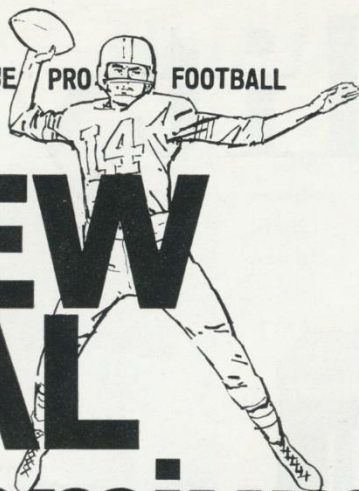
*You get a lot to like with a* **Marlboro**

Answers:

1. Sam Huff
2. Dick Modzelewski
3. Jim Patton
4. Don Chandler
5. Ken Strong
6. Charley Conerly

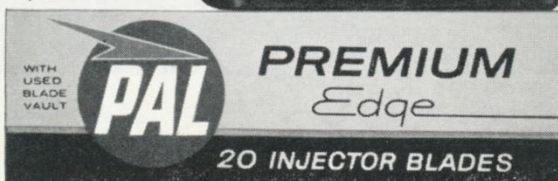


**PAL® SPONSORS  
NATIONAL LEAGUE PRO FOOTBALL  
EVERY SUNDAY  
CBS-TV**



# NEW PAL Premium Injector Blades Take friction out of shaving... Put comfort in!

■ New Pal Premium's extra sharp edge rides on microscopic ball bearings. This combination makes New Pal Premium friction-free as a blade can be—and you get 20 blades for only 98¢. United States Testing Company\* certifies: Pal Premium Injector Blades... best buy for combined sharpness and durability.



©1961, American Safety Razor Company, a division of Philip Morris, Inc.  
\*Independent private testing laboratories

**OFFICIAL PROGRAM**

## NEW YORK GIANTS



**vs. CLEVELAND BROWNS**

**YANKEE STADIUM • Dec. 17, 1961**

**Volume 37**

**Number 7**

### CONTENTS

Hail to the Giants!	3
In the Stadium Stands	5
Giant Close-Ups	7 and 9
Giant 1962 Tickets	9
Yankee 1962 Tickets	11
Giant Jottings	13
Giants-Browns Series Review	15
Giant Statistics	16
Giant Roster and Line-Ups	18
Browns Roster and Line-Ups	19
Looking Over the Browns	21
Brown Stars	23
NFL News and Notes; NFL Leaders	25
Giant Blackboard: Line Blocks	27
Yankee Stadium Services	33
NFL Officials' Signals	35
NFL Pairings and Results	36

### New York Football Giants

JOHN V. MARA	President
WELLINGTON T. MARA	Vice-President
TIMOTHY J. MARA	Secretary-Treasurer
RAYMOND J. WALSH	General Manager
AL SHERMAN	Head Coach
JIM LEE HOWELL	Director of Personnel
HARLAND SVARE	Defensive Coach
ANDY ROBUSTELLI	Assistant Defensive Coach
JIM PATTON	Assistant Defensive Coach
ED KOLMAN	Line Coach
KEN KAVANAUGH	End Coach
DON HEINRICH	Backfield Coach
JOHN JOHNSON, SID MORET and JOHN DZIEGIEL	Trainers
DR. FRANCIS SWEENEY	Physician
DR. ARTHUR CROKER	Dentist
DON SMITH	Director of Publicity
DAN RUBIN	Photographer

Cover Illustration by Carol Johnson

This book published by  
**HARRY M. STEVENS, Inc.**  
320 Fifth Avenue  
New York 1, N. Y.



# Quality



Products of *The American Tobacco Company*

"Tobacco IS OUR MIDDLE NAME"



# Hail to the Giants!



CHARLIE CONERLY

WITH the flaming desire, the indomitable spirit and great resourcefulness that has marked their play all year, the Giants clinched a tie for the National Football League's Eastern title by defeating the Philadelphia Eagles, 28-24, last Sunday.

They can nail down the crown by beating or tying the Cleveland Browns in today's home finale. Even if they should lose to the Browns, the Giants would take the title if the Eagles were to lose to or be tied by the Lions in Detroit.

If the Giants lose and the Eagles win today, the teams would finish in a tie. In that case, they would play off for the Eastern title at the Stadium next Sunday.

The ultimate Eastern winner, be it the Giants or the Eagles, will meet the Packers, who already have clinched the Western title, for the league championship in Green Bay two weeks hence.

That the Giants have reached the happy position in which they now stand constitutes one of the brightest chapters in the glowing history of New York's National Football League entry.

In all honesty, the Giants were not expected to be a prime contender this season. Many of those

closest to the team had written off the campaign in advance as a building year, to be devoted to breaking in new players and patching a line-up that had begun to wear thin in spots.

When an unusually large number of pre-season injuries afflicted key operatives and the Giants, looking very bad, lost their opener to the Cardinals, 21-10, the aspirations of well-wishers were scaled down even farther. "Let's just hope they improve enough to be respectable" sums up the late September attitude of Giant camp-followers.

Even in these dark moments, Coach Allie Sherman and the Giants stuck grimly by their guns and, more importantly, kept faith in themselves. Though still less than impressive, they reeled off three straight road victories, in Pittsburgh, Washington and St. Louis, then put on their first real show of strength in a fourth consecutive victory at Dallas.

Back at the Stadium for a five-game home stand, the Giants beat the Rams handily enough, then came a cropper against the Cowboys. This unlooked-for setback seemed to supply the Giants with new impetus. Catching fire on at-



ALLIE SHERMAN

tack, they downed the Redskins, 53-0; the Eagles, 38-21 and the Steelers, 42-21, and, at Cleveland, carried on to a 37-21 triumph over the Browns.

Then after a heart-breaking 20-17 loss to the Packers at Milwaukee, they bounced back to win the big one at Philadelphia and now today get the shot at gold and glory that no one dared to hope for three months ago.

Charlie Conerly, Del Shofner and the defensive platoon, led by Captain Andy Robustelli, were the particular heroes of the Philadelphia Story. But this season has seen a parade of Giant heroes on a closely-knit Giant team.

So hail to all the Giants, to Sherman and his dedicated assistant coaches and to an alert front office that helped so much by arranging so many inspired trades. They all have the right to be proud of themselves.

On what may be their last 1961 appearance at the Stadium, the Giants, one and all, also wish to express their appreciation for the rousing support you have given them. The great team on the field is rightfully proud of the great team in the stands, too.

Merry Christmas and Happy New Year!

## PLAY-OFF TICKET PLANS

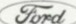
If the Giants wind up in a tie with the Eagles, unallotted tickets for next Sunday's Eastern play-off at the Stadium will go on public sale immediately after today's game in the ticket booths outside the Stadium.

Season subscribers who wish to attend the play-off will receive their usual locations. They may pick up their tickets, at the Stadium ticket office *only*, starting tomorrow at 10 A.M.

Regular season ticket prices will prevail: \$5 for box seats, \$4 for reserved seats. The unreserved bleacher seats, priced at \$2, will go on sale at 10 A.M. the day of the game.



# Just right – for just about everybody!

There's no new car anything like it! A foot shorter than the big ones, the new Ford Fairlane 500 fits in your garage as prettily as it sits on a beach. Its bigness is *inside*—where it's as roomy as some of the biggest Fords ever built. The all-new Challenger V-8 (optional) is the world's first economy Eight—and is as quick to save a dollar as it is to save time. Service has been reduced to a minimum—30,000 miles on many items, no more than twice a year or 6,000 miles on the rest. A dream car? It was until this year. Now you can drive it at your Ford Dealer's. PRODUCT OF  MOTOR COMPANY



'62 FORD

**FAIRLANE 500**

ONLY THE NAME'S THE SAME!



# In the Stadium Stands

For a change of pace, Photographer Ken Regan trains his seeing eye camera on the stands



GRANDSTAND QUARTERBACK . . . "What he should have done was . . ."



FOR ALL THE GIANTS . . . and especially Sam.



THAT'S THE WAY . . . "I couldn't have called it better myself."



HOW ABOUT THAT . . . "Chandler sure put that one into orbit."



THIRSTY? HUNGRY? . . . Stevens serves everything anyone would want.



FULL HOUSE AGAIN . . . Order your 1962 tickets now.



**BE REALLY REFRESHED!**  
**...ENJOY COKE!**





# Giant Close-Ups



*Andy Robustelli*

*Y. A. Tittle*



**Andy Robustelli (81)** has established himself over eleven seasons as one of the NFL's foremost defensive ends. Powerful, quick and heady, he has a rare genius for nipping running plays in the bud and harries opposing passers unmercifully. Andy, who hails from Stamford, Conn., and attended little Arnold College, was acquired from the Rams in 1956 for a future draft choice. It was a good deal. Robustelli is the Giants' defensive captain and also an assistant coach.



*Alex Webster*

One of the brightest Giant developments this season has been the return of **Alex Webster (29)** to his former effectiveness as a running back after two injury-ridden seasons. When sound, Alex has few peers at getting the last inch a play has to offer. He was one of the Giants' prime movers on attack from 1955 through 1958. A North Carolina State product, Webster came to the Giants via Canada.



*Jimmy Patton*

When **Jimmy Patton (20)** first showed at Giants' camp from Ole Miss in 1955, the feeling was that he'd never make it as a pro. "Too small to stand the gaff" was the snap judgment. Fortunately, no hasty action was taken. Now, seven years later, Jimmy, still a scant 180 pounds, is one of the "big" defensive backs in the NFL. Besides holding down right safety, he again is serving as assistant coach.



*Ray Wietecha*

Reliable **Ray Wietecha (55)** has been the Giants' "snapper" since 1954, after a year of rookie service as an offensive and defensive jack-of-all-trades. They don't make centers any better than this agile, 230-pound Northwestern graduate. Because of his exceptional mobility, Ray makes side blocks that few teams would even consider assigning to the man over the ball. An "iron man," Ray has played in more than 100 straight Giant games.



# FILL YOUR TANK WITH CHEVRON SUPREME



You're always welcome at the Chevron Supreme pump — no matter what you drive! Chevron Supreme brings out the best in cars — particularly those with modern high-compression engines. It delivers all the power and mileage built into these engines. Makes 'em lively and keeps 'em lively. And right next to the Chevron Supreme pump, you'll find RPM Motor Oils . . . the only complete line of oils with ashless detergent! Could you ask for anything more? No. Because you never have to ask for the one other thing you want . . . that superb Chevron service!

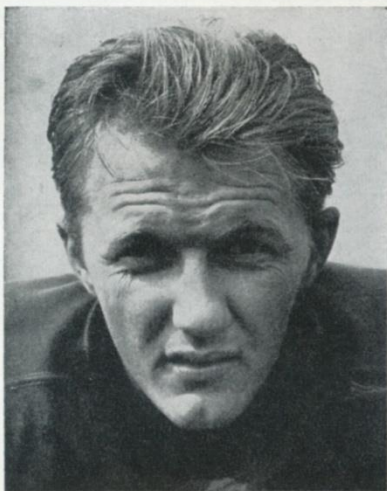
***At the sign of the CHEVRON,  
we take better care of your car.***

PRODUCTS OF CALIFORNIA OIL COMPANY





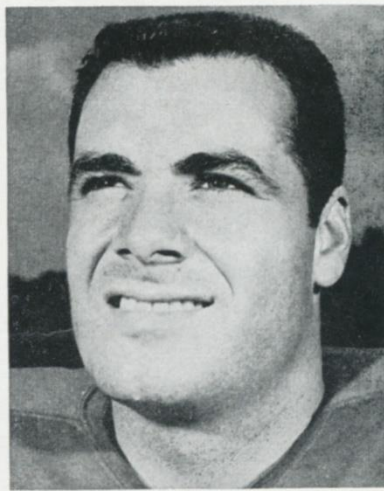
# Giant Close-Ups



*Del Shofner*



*Kyle Rote*



*Joe Walton*

For years the Giants suffered for lack of deep pass receivers. They remedied this situation radically by obtaining **Del Shofner (85)** from the Rams in exchange for surplus talent. The fleet, rangy Baylor graduate has few equals in shagging long tosses downfield and has dazzling evasive moves on short patterns. In addition, Del is a superior punter and proven defensive back.

**Kyle Rote (44)**, the offensive captain of the Giants, holds the club record for passes caught and yards gained on pass receptions. An All-America halfback at S. M. U., the Mighty Mustang was the Giants' bonus draft choice of 1951. He broke in as a halfback, shifted to end after a series of knee injuries and has become one of the NFL's best wingmen.

**Joe Walton (80)** is another of the topflight players the Giants have added to their roster since last season. An All-America at Pitt in 1956, he was a first-string offensive end for the Redskins for three seasons. He has moved into the Giant line-up at right end, where he provides solid blocking and sure-handed pass receiving. Joe isn't too fast but has good moves that get him loose.

## Football Giants—1962 Season Subscription

*This season more Giant fans than ever before discovered the best way to solve their ticket problems was by season subscription. Many inquiries are now being received at the Giant office regarding subscription for 1962.*

*If you were a season subscriber this year, your same seats automatically are held in your name for 1962. Sometime in the spring you will receive a bill covering the seats which are registered in your name at the Giant office.*

*If you were not a subscriber in 1961 but wish to be one for 1962, we suggest you fill out and mail the blank appearing below.*

*Our 1962 Season Ticket Brochure will be ready in February and will include all necessary information, including the areas in which vacancies now exist.*

*If you prefer a personal visit, our Ticket Windows at 10 Columbus Circle will be open for that purpose as of February 13.*

New York Football Giants, Inc.

10 Columbus Circle

New York 19, New York

Gentlemen:

Please send me your 1962 Season Ticket Brochure when it is ready for mailing:

Name .....

Address .....

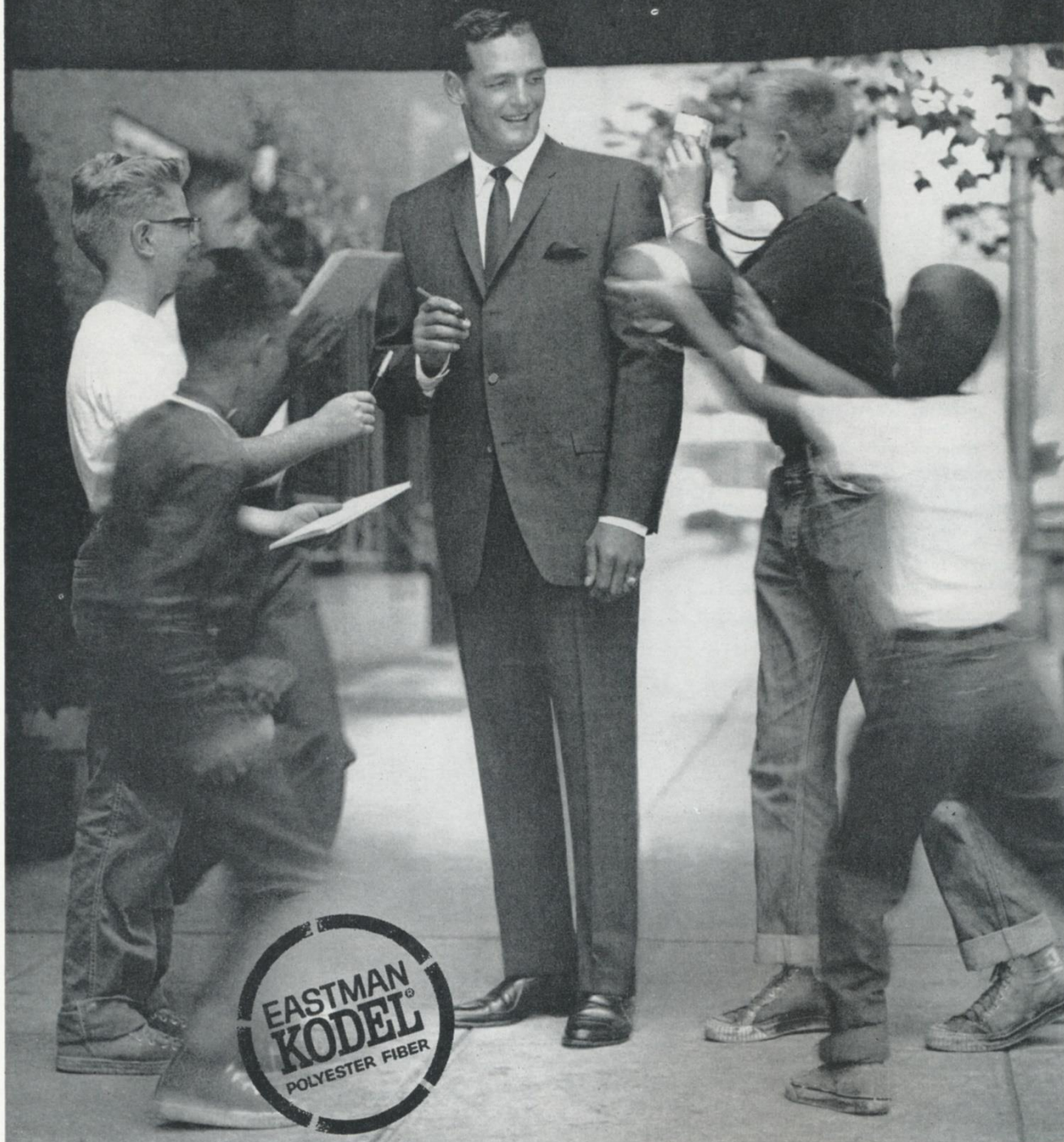
City & Zone..... State.....

**This blank is for use of new applications. 1961 Season reservations are automatically renewed.**

**SEASON TICKETS—YOUR BEST BUY IN ENTERTAINMENT**



# score with KODEL



N. Y. Giants pro football star Dick Lynch has to look good off the gridiron, too. He's for Kodel. This stay-fresh polyester fiber has put first-string crispness and comfort into men's wear. You'll find Kodel in suits, slacks, shirts, ties, rainwear, topcoats . . . in all the clothes that make for America's best-pressed men.

Kodel is the trademark for Eastman polyester fiber. Only the fiber is made by Eastman, not fabrics or clothing.

EASTMAN CHEMICAL PRODUCTS, INC., subsidiary of Eastman Kodak Company, 260 MADISON AVENUE, NEW YORK 16

**Headquarters for men's wear  
blended with Kodel**

**JOHN DAVID**  
*fifth avenue new york*

**New York — White Plains — Washington**





*First row, left to right: Whitey Ford, Bill Skowron, Hal Reniff, Jim Hegan, Frank Crosetti, Ralph Houk, John Sain, Wally Moses, Earl Torgeson, Cletis Boyer, Yogi Berra, Mickey Mantle. Second row: Gus Mauch (Trainer), Billy Gardner, Bob Hale, Joe De Maestri, Tony Kubek, Tex Clevenger, Ralph Terry, Hector Lopez, Bob Cerv, Elston Howard, Roger Maris, Bob Turley, Joe Soares (Trainer). Third row: Bobby Richardson, Al Downing, Luis Arroyo, John Blanchard, Bill Stafford, Roland Sheldon, Jim Coates, Spud Murray (Batting Practice Pitcher), Bud Daley, Bruce Henry (Training Secretary). Seated on ground in front: Batboys Frank Prudenti, Fred Bengis.*

# IT WON'T BE LONG NOW, YANKEE FANS!

Soon the New York Yankees will be defending their 1961 World Championship in what has all the makings of another thrilling season. To assure yourself of a choice seat to watch the power-laden Bombers in 1962, take advantage of the COMBINATION TICKET PLAN which entitles you to the same choice seat for the BIG games as well as the opportunity to obtain World Series tickets if the Yankees again are participants in the fall classic.

## NEW YORK YANKEES

For further information write—Ticket Office, Yankee Stadium, Bronx 51, N. Y.  
or phone CYpress 3-4300

### NOVEL CHRISTMAS GIFT IDEA!

Looking for an unusual Christmas gift for the sports fans on your shopping list? Between halves today or right after the game, stop at the Advance Ticket Windows behind home plate and pick up Yankee Gift Tickets for 1962. Here's a gift that keeps on giving through the next baseball season. You can purchase any combination of box or reserved seats for one game or the Combination Plan for all Sundays, nights, holidays, and the opener. Gift Tickets may be exchanged by the recipient for game tickets next season. Your personalized gift comes in an attractive gift folder. Stop at the ticket office here today for your Yankee Gift Tickets.



# Holiday Sports Calendar



For your convenience in planning your holiday entertainment and securing your tickets, we are pleased to give this complete schedule of outstanding coming events.

**TONIGHT**  
**KNICKS**  
**VS**  
**BOSTON**

**THIS TUESDAY**  
**KNICKS vs**  
**ST. LOUIS**  
**—**  
**SYRACUSE vs**  
**DETROIT**

**THIS WEDNESDAY**  
**RANGERS**  
**VS**  
**DETROIT**

**THIS THURSDAY**  
ECAC Holiday Hockey Tournament  
**ST. LAWRENCE vs**  
**BOSTON COLLEGE**  
**—**  
**CLARKSON vs**  
**BOSTON UNIVERSITY**

**THIS FRIDAY**  
**ECAC**  
**HOLIDAY HOCKEY**  
**TOURNAMENT**  
(Finals)

**THIS SATURDAY**  
**RANGERS**  
**VS**  
**CHICAGO**

**CHRISTMAS NIGHT**  
**MONDAY, DEC. 25**  
**KNICKS vs**  
**PHILA. WARRIORS**  
**CHICAGO vs DETROIT**

**TUESDAY, DEC. 26**  
ECAC Holiday Basketball Festival  
Aft. LA SALLE vs DARTMOUTH  
ST. JOHN'S vs CINCINNATI  
**—**  
Evg. NYU vs DAYTON  
PROVIDENCE vs WISCONSIN

**WEDNESDAY, DEC. 27**  
**RANGERS**  
**VS**  
**MONTREAL**

**THURSDAY, DEC. 28**  
**HOLIDAY**  
**BASKETBALL**  
**FESTIVAL**  
(Afternoon; Evening SEMI-FINAL)

**FRIDAY, DEC. 29**  
**KNICKS**  
**VS**  
**BOSTON CELTICS**

**SATURDAY, DEC. 30**  
**HOLIDAY**  
**BASKETBALL**  
**FESTIVAL**  
(Finals 6 PM)

**NEW YEAR'S EVE**  
**SUNDAY, DEC. 31**  
**RANGERS**  
**VS**  
**BOSTON**

*Tickets Now on Sale for All Events — Garden Box Office*

SHIPSTADS  
and JOHNSON

**ICE FOLLIES OF 1962**

Tues. Jan 9 thru Sun. Jan. 21 — Mats. Sats. & Suns.

Res. \$2, \$2.50, \$3, \$4, \$5, \$6 tax incl. Mail orders promptly filled.

**MADISON SQ. GARDEN**



# Giant Jottings



**SAM HUFF**, the Giants' linebacker, received public recognition from President Kennedy at the recent National Football Foundation and Hall of Fame dinner. During his rousing address to 1,500 dignitaries at the Waldorf-Astoria, the President got to talking about football players he had known, seen and particularly

admired. In this connection, he said: "... and Sam Huff, who campaigned with me through the coal mines of West Virginia—and he's even better at that than he is on Sundays." This glowing tribute from the Chief Executive saved the night for Sam. The famed "red-dogger" had spent an hour vainly trying to crash through the line of Secret Service men who guarded the dais to pay his respects to JFK. Huff finally did crack the barrier, with an assist from Bob Hall, the Hall of Fame's secretary.

The handsome craft depicted below will be presented before today's game to the Giant player-of-the-year, as selected by the fans who cast ballots in Howard Clothes stores throughout the metropolitan area. It's a 1962 Owens Sea Skiff Cruiser. The fully-equipped \$5,100 pleasure craft measures 25 feet and sleeps four. The Howard Award nominees, selected by Giant writers, are Sam Huff, Jim Katcavage, Jim Patton, Del Shofner, Y. A. Tittle and Alex Webster. Kyle Rote declined listing because of his ties with Howard.



## HOTEL MANHATTAN

**HEADQUARTERS FOR  
PROFESSIONAL TEAMS  
IN NEW YORK CITY**

Hotel Manhattan offers 1400 new air conditioned guest rooms, each with television and radio. Known as the "Home of Champions," this magnificent skyscraper hotel is ideally located in the heart of Times Square. Meet your friends at the popular Playbill Restaurant for cocktails, luncheon, dinner and supper.



**HOTEL**

*Manhattan*

44TH TO 45TH STREETS  
AT EIGHTH AVENUE • Judson 2-0300



Express Subway Trains Speed You to  
Yankee Stadium from the Private  
Subway Entrance of the Hotel Manhattan

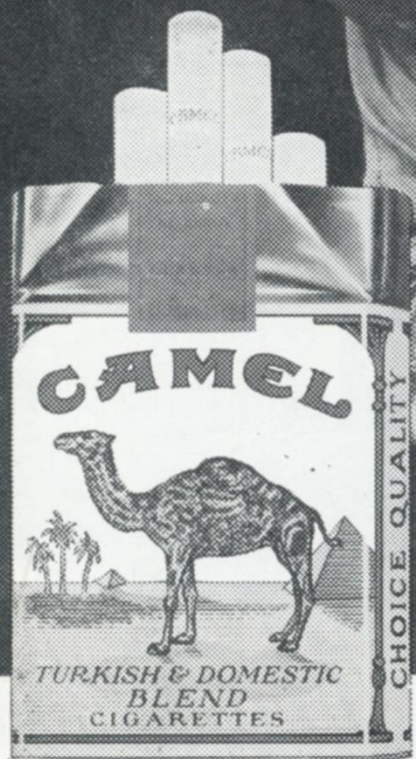
**ERWIN O. SCHEL, Manager**  
CHARLES J. BORGES, Sports Representative



# Have a real cigarette—have a **CAMEL**

*Dick Nolan*

PROFESSIONAL FOOTBALL STAR



**The best tobacco makes the best smoke!**

R. J. Reynolds Tobacco Co., Winston-Salem, N. C.



# Series Review

**T**HE Giants and Browns enter today's game all even in a twenty-five game series that began in 1950. Each team has scored twelve victories and there has been one tie.

The series ledger includes two play-offs for the National League's Eastern Conference title. These too have been a stand-off. The Browns, after losing both regular season games, beat the Giants, 8-3, in a 1950 play-off. In 1958, the Giants followed up two regular-season victories by scoring a 10-0 play-off triumph.

Along the way, each team has registered six straight victories. The Browns swept the 1953, 1954 and 1955 home-and-home series. The Giants' string embraced the three 1958 meetings, two in 1959 and the first 1960 game.

With a couple of exceptions, the games have been remarkably close. The departures from norm occurred in 1953, when the Browns clobbered the Giants, 62-14, and in 1959 when the Giants walloped the Browns, 48-7.

The complete series record:

1950—Giants 6, Browns 0	1952—Giants 17, Browns 9
h Giants 7, Browns 13	h Giants 37, Browns 34
*Browns 8, Giants 3	
1951—Browns 14, Giants 13	1953—h Browns 7, Giants 0
h Browns 10, Giants 0	Browns 62, Giants 14

1954—Browns 24, Giants 14	1958—Giants 21, Browns 17
h Browns 16, Giants 7	h Giants 13, Browns 10
	*Giants 10, Browns 0
1955—Browns 24, Giants 14	1959—Giants 10, Browns 6
h Giants 35, Browns 35	h Giants 48, Browns 7
1956—Giants 21, Browns 9	1960—Giants 17, Browns 13
h Browns 24, Giants 7	h Browns 48, Giants 34
1957—Browns 6, Giants 3	1961—Giants 37, Browns 21
h Browns 34, Giants 28	

\* Conference Playoff.

## GIANTS vs. ALL OPPONENTS

Opponent	W.	L.	T.	Pts.	Opp. Pts.
Baltimore Colts	2	3	0	88	102
Chicago Bears	14	20	2	451	554
Cleveland Browns	12	12	1	426	451
Dallas Cowboys	1	1	1	78	58
Detroit Lions	5	8	1	177	285
Green Bay Packers	15	15	2	442	416
Los Angeles Rams	4	7	0	232	238
Philadelphia Eagles	35	20	1	1077	873
Pittsburgh Steelers	31	19	2	967	747
St. Louis Cardinals	30	10	0	924	624
San Francisco 49ers	3	1	0	99	81
Washington Redskins	33	16	2	1080	799

FOR THE **Fastest, Smoothest Shaves Possible...**

Johnny Unitas

Star Quarterback of  
the Baltimore Colts,  
reveals his shaving secret!

Get Palmolive  
Rapid-Shave

Super-Moisturized Lather  
Soaks Whiskers With 17  
Beard-Softening Ingredients



Rich Rapid-Shave lather is super-moisturized with 17 separate beard-softening ingredients that start to work on contact.



Rapid-Shave sets you up for a fast shave... a smooth shave... a complete shave... a comfortable shave from start to finish.



MENTHOL REGULAR SPICE

MAKE IT FAST AND MAKE IT SMOOTH—  
USE RAPID-SHAVE IN THE MORNING!



# Giant Statistics

## NINE-GAME TEAM RECORD

GIANTS	OPPONENTS
95 First downs, rushing .....	83
147 First downs, passing .....	107
16 First downs, penalty .....	15
258 Total first downs .....	205
4,300 Total yards gained .....	3,784
1,721 Yards gained, rushing .....	1,654
2,579 Yards gained, passing .....	2,130
424 Number of rushes .....	392
387 Number of passes .....	361
200 Passes completed .....	169
22 Passes had intercepted .....	32
43.9 Punting average .....	42.6
38 Punts returned .....	29
7.1 Punt return average .....	7.4
36 Kick-Offs returned .....	57
22.7 Kick-Offs return average .....	21.9
57 Penalties .....	67
599 Yards penalized .....	703
18 Fumbles lost .....	20

## INDIVIDUAL STATISTICS

	SCORING						
	TD-R	TD-P	TDs	PAT	FG	Pts.	
Summerall .....	0	0	0	45-45	14-32	87	
Shofner .....	0	11	11	0	0	66	
Rote .....	0	7	7	0	0	42	
Gaiters .....	6	1	7	0	0	42	
Webster .....	2	3	5	0	0	30	
Barnes .....	2	1	3	0	0	18	
Title .....	3	0	3	0	0	18	
Morrison .....	1	1	2	0	0	12	
Walton .....	0	2	2	0	0	12	
Hayes .....	1	0	1	0	0	6	
Huff .....	1	0	1	0	0	6	
Patton .....	1	0	1	0	0	6	
Wells .....	1	0	1	0	0	6	
Scott .....	1	0	1	0	0	6	

## PASSING

	Att.	Comp.	Int.	Yds.	L.G.	TDs.	Pct.
Title .....	266	153	12	2,156	62	16	.575
Conerly .....	96	39	7	557	37	7	.406
Grosscup .....	22	5	3	87	32	1	.227
Gaiters .....	3	3	0	42	27	2	1.000

## RUSHING

	Att.	Yds.	L.G.	Avg.
Webster .....	175	837	59	4.8
Gaiters .....	116	460	29	4.0
Wells .....	49	164	17	3.3
Title .....	24	95	17	4.0
Webb .....	6	51	21	8.5
Morrison .....	33	48	14	1.5
Chandler .....	3	30	30	10.0
Conerly .....	11	17	9	1.5
Grosscup .....	2	10	10	5.0
King .....	4	7	4	1.8
Shofner .....	1	6	6	6.0

## RECEIVING

	P.C.	Yds.	L.G.	TDs.
Shofner .....	62	1033	46	11
Rote .....	50	780	57	7
Walton .....	35	513	37	2
Webster .....	23	277	59	3
Mor'son .....	11	67	16	1
Gaiters .....	11	54	14	1
Wells .....	4	22	19	0
Hall .....	2	22	20	0
Barnes .....	2	74	62	1

## PUNT RETURNS

	No.	Yds.	L.G.
Stits .....	17	132	20
Wells .....	14	77	18
Webb .....	5	61	30
Morrison .....	2	1	1

## INTERCEPTIONS

	No.	Yds.	L.G.
Lynch .....	9	60	36
Patton .....	8	163	51
Barnes .....	7	195	102
Huff .....	3	13	13
Livingston .....	3	0	0
Scott .....	1	65	65
Morrison .....	1	18	18

## KICK-OFF RETURNS

	No.	Yds.	L.G.
Gaiters .....	10	268	49
Wells .....	11	261	49
Webb .....	8	156	40
Stits .....	4	87	30
Morrison .....	2	32	21
Simms .....	1	14	14

## PUNTING

	No.	Avg.	Lgst.
Chandler .....	60	43.9	66

"He tried to take my

**Drake's**  
**COOKIES"**





Sponsored by: P. Ballantine & Sons/Howard Clothes/L&M Cigarettes/Parks Sausage.



**If you want to know what's really happening on the field,  
listen to the Giants on WNEW Radio.**

**Team:** New York Football Giants. **Station:** WNEW Radio (1130 on your dial).  
**Place:** All Giant games (home and away). **Play-by-play:** Marty Glickman,  
Al DeRogatis and Joe Hasel. **Pre-game show:** Kyle Rote. **Post-game show**  
(direct from locker room): Kyle Rote and guests. Be sure to stay tuned after  
the game. You'll hear what happened, why it happened, how it happened.

**(THE ONLY THING BETTER THAN WNEW'S COVERAGE IS TO BE AT THE GAME—WITH A RADIO)**

**WNEW RADIO**

**1130 KC / 102.7 FM / A METROPOLITAN BROADCASTING STATION**



## Giants on Offense

R. H. ROTE (44)	F. B. WEBSTER (29)	Q. B. TITTLE (14)	L. H. GAITERS (35)
R. E. WALTON (80)	R. T. LARSON (53)	L. G. DESS (62)	L. T. BROWN (79)
	R. G. SMITH (61)	C. WIETECH (55)	L. E. SHOFNER (85)

## Browns on Defense

L. E. HOUSTON (82)	L. T. GAIN (79)	M. L. B. LLOYD (52)	R. T. PETERS (72)	R. E. WIGGIN (84)
L. W. PARRISH (30)	L. L. B. FISS (35)	L. S. FLEMING (46)	R. S. FRANKLIN (24)	R. W. SHOFNER (44)
			R. L. B. MICHAELS (34)	

## NEW YORK GIANTS ROSTER

No.	Name	Position	Weight	Height	Age	College	Yrs. Pro.
11	Grosscup, Lee	QB	185	6:01	24	Utah	2
12	Hall, Pete	OE	200	6:03	23	Marquette	1
14	Tittle, Y. A.	QB	195	6:01	34	Louisiana State	10
20	Patton, Jim	DHB	185	5:10	29	Mississippi	7
21	Webb, Allan	D-OHB	180	5:10	27	Arnold	1
22	Lynch, Dick	DHB	200	6:01	25	Notre Dame	4
24	King, Phil	OHB	225	6:04	25	Vanderbilt	4
28	Wells, Joel	OHB	198	6:01	26	Clemson	1
29	Webster, Alex	OHB	220	6:03	30	North Carolina State	7
34	Chandler, Don	K-HB	205	6:02	26	Florida	6
35	Gaiters, Bob	OHB	215	5:11	23	New Mexico State	1
40	Morrison, Joe	OHB	212	6:01	23	Cincinnati	3
41	Johnson, Gene	DHB	185	6:00	26	Cincinnati	3
42	Conerly, Charlie	QB	185	6:01	40	Mississippi	14
44	Rote, Kyle	OE	200	6:01	34	Southern Methodist	11
49	Barnes, Erich	DHB	198	6:03	26	Purdue	4
52	Hayes, Larry	LB	230	6:03	26	Vanderbilt	1
53	Larson, Greg	OT	240	6:02	22	Minnesota	1
55	Wietecha, Ray	C	230	6:01	32	Northwestern	9
61	Smith, Zeke	OG-LB	235	6:02	25	Auburn	2
62	Dess, Darrell	OG	245	6:00	26	North Carolina State	4
65	Walker, Mickey	OG	225	6:00	22	Michigan State	1
66	Stroud, Jack	OG	255	6:01	32	Tennessee	9
70	Huff, Sam	LB	230	6:01	26	West Virginia	6
72	Janerette, Charlie	OT	250	6:03	22	Penn. State	2
75	Katcavage, Jim	DE	240	6:03	26	Dayton	6
76	Grier, Roosevelt	DT	290	6:05	28	Penn. State	6
77	Modzelewski, Dick	DT	260	6:00	30	Maryland	9
79	Brown, Roosevelt	OT	255	6:03	28	Morgan State	8
80	Walton, Joe	OE	205	5:11	25	Pittsburgh	5
81	Robustelli, Andy	DE	230	6:01	33	Arnold College	11
82	Scott, Tom	LB	220	6:02	31	Virginia	9
83	Simms, Bob	LB	225	6:01	23	Rutgers	2
85	Shofner, Del	OE	185	6:03	26	Baylor	5
88	Summerall, Pat	K-OE	220	6:04	31	Arkansas	10
89	Livingston, Cliff	LB	215	6:03	30	U. C. L. A.	8

### GIANT SPEC

PAT, FG and Kick-Offs—  
Chandler (34)  
Punting—Chandler (34)  
Holding for PAT, FG—  
Grosscup (1)  
Kick Returns—Stitts (48)

### OFFICIAL

#### Referee

(23) Harry Brubaker, I

#### Umpire

(17) James Beier

#### Linesman

(30) George Murphy, Sou

#### Back Judge

(10) Sam Giangreco,

#### Field Judge

(32) James Tunney,

### BROWN SPEC

Punting—Bake  
PAT, FG and Kick-Off  
Baker (38)  
Holding for PAT, FG—  
Plum (16)  
Kick Returns—Mitchell (1)

PLEASE USE ENTRANCE RAM

# When it's Calvert Whiskey is delicious





**KICK-OFF  
05 P.M.**

R. E. NAGLER (86)	R. H. RENFRO (26)	F. B. BROWN (32)	Q. B. PLUM (16)	L. H. MITCHELL (49)
R. T. McCORMACK (74)	R. G. WOOTEN (60)	C. MORROW (56)	L. G. SMITH (64)	L. E. KREITLING (88)

## Browns on Offense

## Giants on Defense

L. E. KATCAVAGE (75)	L. T. MODELEWSKI (77)	M. L. B. HUFF (70)	R. T. GRIER (76)	R. E. ROBUSTELLI (81)
L. H. BARNES (49)	L. L. B. LIVINGSTON (89)	L. S. WEBB (21)	R. L. B. SCOTT (82)	R. H. LYNCH (22)

## CLEVELAND BROWNS ROSTER

### SPECIALISTS

Kick-Offs—Summerall (88),  
andler (34).  
andler (34), Shofner (85).  
AT, FG—Conerly (42),  
ossup (11).  
Stits (48), Gaiters (35)

### FFICIALS

#### Referee

ubaker, Loyola (L. A.)

#### Umpire

nes Beiersdorfer

#### Linesman

phy, Southern California

#### ack Judge

iangreco, Manhattan

#### eld Judge

Tunney, Occidental

### N SPECIALISTS

g—Baker (38).  
Kick-Offs—Groza (76),  
aker (38).  
AT, FG—Dawson (18),  
Plum (16).  
Mitchell (49), Shofner (44).

No.	Name	Position	Weight	Height	College	Yrs. Pro.
16	Plum, Milton	QB	205	6:02	Penn State	5
18	Dawson, Len	QB	190	6:01	Purdue	5
20	Fichtner, Ross	DHB	185	6:00	Purdue	2
22	Watkins, Tom	OHB	195	6:01	Iowa State	1
24	Franklin, Bob	DHB	182	5:11	Mississippi	2
26	Renfro, Ray	OHB	192	6:01	North Texas State	10
30	Parrish, Bernie	DHB	195	5:11	Florida	3
32	Brown, Jim	FB	228	6:03	Syracuse	5
34	Michaels, Walter	LB	237	6:00	Washington and Lee	10
35	Fiss, Galen	LB	227	6:01	Kansas	6
38	Baker, Sam	FB	217	6:02	Oregon State	7
40	Powell, Preston	FB	225	6:02	Grambling	1
42	Crespino, Bob	OE	217	6:04	Mississippi	1
44	Shofner, Jim	DHB	192	6:00	Texas Christian	4
46	Fleming, Don	DHB	188	6:00	Florida	2
49	Mitchell, Bob	OHB	188	6:00	Illinois	4
50	Costello, Vince	LB	232	6:00	Ohio University	5
52	Lloyd, Dave	LB	248	6:03	Georgia	3
56	Morrow, John	OC	240	6:03	Michigan	5
60	Wooten, John	OG	250	6:02	Colorado	3
62	Putnam, Duane	OG	233	6:00	C. O. P.	12
64	Smith, Jim Ray	OG	245	6:03	Baylor	6
68	Stephens, Larry	DT	260	6:04	Texas	2
70	Linden, Errol	OT	260	6:05	Houston	1
72	Peters, Floyd	DT	250	6:04	San Francisco State	3
74	McCormack, Mike	OT	250	6:04	Kansas	9
76	Groza, Lou	OT	248	6:03	Ohio State	16
77	Schafraath, Dick	OT	255	6:03	Ohio State	3
79	Gain, Bob	DT	260	6:03	Kentucky	9
81	Clarke, Leon	OE	234	6:04	U. S. C.	5
82	Houston, Jim	DE	235	6:02	Ohio State	2
83	Brewer, John	DE	235	6:04	Mississippi	1
84	Wiggin, Paul	DE	245	6:03	Stanford	5
85	Ferguson, Charles	OE	217	6:05	Tennessee State U.	1
86	Nagler, Gern	OE	190	6:02	Santa Clara	9
88	Kreitling, Rich	OE	208	6:02	Illinois	3

E RAMP NEAREST YOUR SEAT

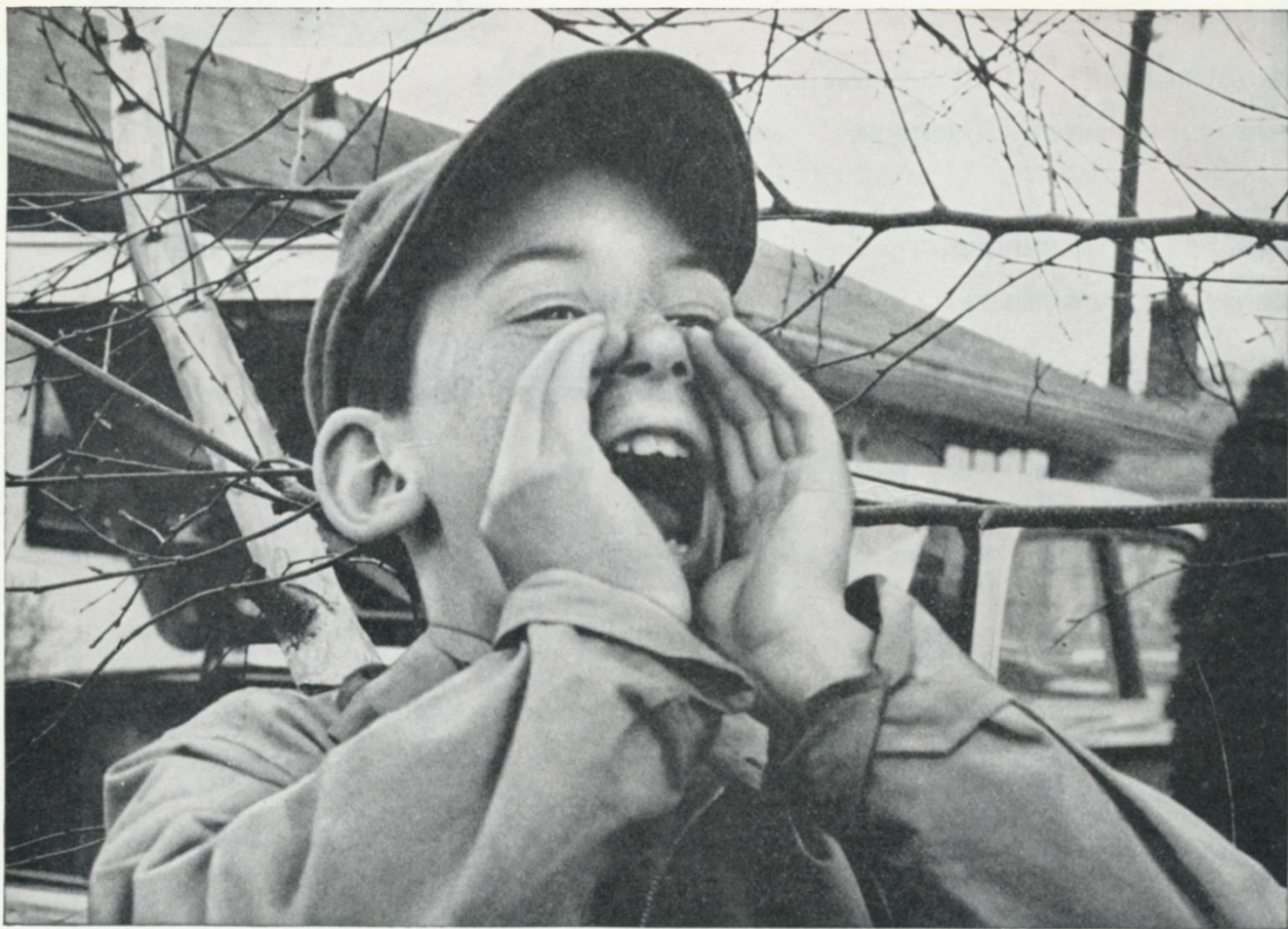
*call for*  
**Calvert Reserve**  
*—the right whiskey for today's taste*

"Always Good as Gold"

HOUSE OF CALVERT, LOUISVILLE, KY. • FULL 86 PROOF • BLENDED WHISKEY • 65% GRAIN NEUTRAL SPIRITS.







## Newest member of the “Come’n-See-Our-Brand-New-Car” Club

**Your family, too, can trade in the old, drive home the new with an Auto Loan from Chemical New York**

Their new car has Jimmy jumping, and the rest of the family are just as proud.

From here on, they’ll be adding miles to family fun, going places they couldn’t visit before. And so can you, if you join the “club”. The “club”, you see, is just what we call the thousands of families in our area who have financed their cars at Chemical New York.

Why did they come to us? Because we do just about everything but deliver the car.

See a “New York Banker with the hometown touch”. At your nearest office of Chemical New York, you’ll talk with a “hometown banker”. He’ll put together an Auto Loan that’s planned to fit your budget. One with easy terms at low cost.

**Puts you in the driver’s seat in “no time flat”.** Come in today, and tomorrow he’ll try to have the check in your hand.

Of course, if you’ve borrowed before from Chemical New York, you may have your loan in a matter of minutes. So, if you need a loan for a car (or for anything else to make living easier for you and your family), visit “The New York Bank with the hometown touch”.

### Three of our most popular Auto Loan Plans

Annual cost only \$4.25 per annum per \$100 of loan (deducted in advance)

AMOUNT OF LOAN	AMOUNT YOU RECEIVE	NUMBER OF MONTHS	YOU REPAY MONTHLY
\$1,440	\$1,378.80.....	12.....	\$120
	1,317.60.....	24.....	60
	1,256.40.....	36.....	40
2,160	2,068.20.....	12.....	\$180
	1,976.40.....	24.....	90
	1,884.60.....	36.....	60
3,240	3,102.30.....	12.....	\$270
	2,964.60.....	24.....	135
	2,826.90.....	36.....	90

**Chemical Bank** Founded 1824  
**New York Trust Company**  
*The New York Bank with the hometown touch*



# Looking Over: *The Browns*

TO most Giant fans, the Browns are almost as familiar as the Giants. The Cleveland team has been a favorite in New York ever since it first was organized by Coach Paul Brown in 1946 as an All-America Conference entry.

In their sixteen years, the Browns naturally have undergone many changes in personnel. Gone are Otto Graham, Marion Motley, Mac Speedie, Dante Lavelle, Horace Gillom and the other shining lights of the original cast. But because Brown is a coach who believes in sticking to a standard pattern of operations, the Browns, perhaps more than any team in football, have retained their identity.

Nor do today's Browns suffer by comparison with the great Browns of the past. To succeed those who have played out the string is another batch of fine players, headed by the incomparable Jimmy Brown, Bobby Mitchell, Milt Plum, Ray Renfro, Jim Ray Smith and Bob Gain.

Then there is the remarkable Lou Groza. Reactivated this season after a year on the sidelines, this superb place-kicker bridges the gap between the old and the new Browns.

It has been said of the Browns that they rarely try to fool an opponent. Paul Brown's philosophy

is to play what might be termed "showdown football." In effect, he says "we're going to do what we always do; stop us, if you can."

Cleveland's glowing record over the years indicates how successful these tactics have been. After dominating the All-America Conference for four straight seasons, the Browns moved into the National League starting in 1950. They won six straight Eastern titles, plus another in 1957, and went on to capture the world championship three times.

The Giants have fared better than any other rival against the Browns, holding them to a stand-off in twenty-five meetings. Despite this relative success, the New Yorkers have nothing but the highest respect for Cleveland. The Giants enjoy the challenge of the show-down that the Browns ask. At the same time, they realize there is no margin for error in playing this precision-drilled, uncompromisingly hard-nosed team.

The current Browns feature a balanced attack. In Brown, the peerless fullback who perennially wins the National League rushing title, and Mitchell, a mercurial speedster, they have as potent inside-outside running punch as football has to offer.

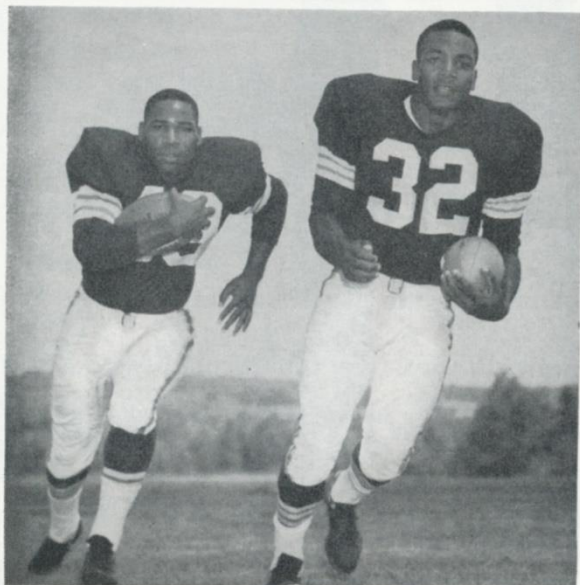
These ace ball-carriers also

figure prominently in a diversified passing game. Plum, still on the rise, has one of the highest pass-completion averages in the National League over the last few years and a fine record of interception avoidance. Another Cleveland receiver the Giants have reason to respect is Ray Renfro. This fleet flanker back gave the New Yorkers fits in Cleveland earlier this season and always has been a thorn in their sides. Richie Kreitling and Gern Nagler, at the ends, also are competent pass-grabbers.

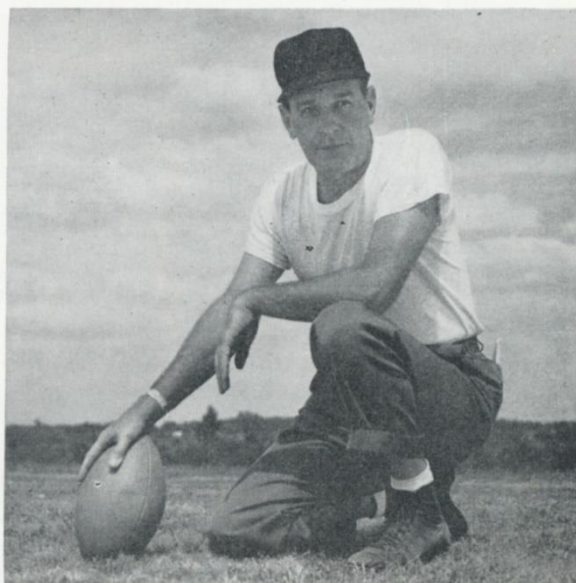
A crisp-blocking offensive line features John Morrow at center, Smith at left guard and Mike McCormack at right tackle. It does a particularly good job of pass protection.

Cleveland's defense, still being rebuilt, does not quite measure up to its offense—but it is formidable enough. Up front, the veteran Gain and young Jim Houston are outstanding. Dave Lloyd, Galen Fiss, Walt Michaels and Vince Costello compose a rugged linebacking group. A young deep secondary has good corner men in Jim Shofner and Bernie Parrish.

In a nutshell, this is a typical Brown team. Even without supporting details, that's enough of an endorsement.

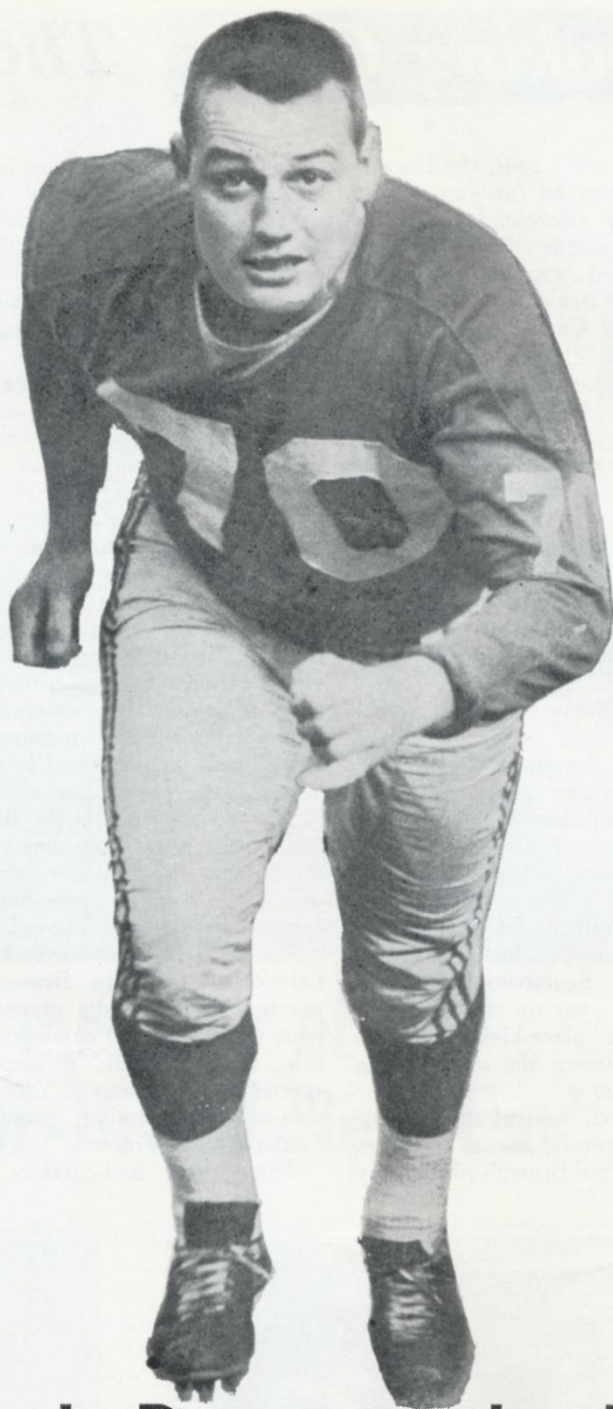


**BOBBY MITCHELL AND JIMMY BROWN**



**COACH PAUL BROWN**





**How Does It Look Down on the Field?**

**SAM HUFF** . . . analyzes today's game from the player's point of view. What

were the key plays? What worked for the Giants? Who played a particularly good game?

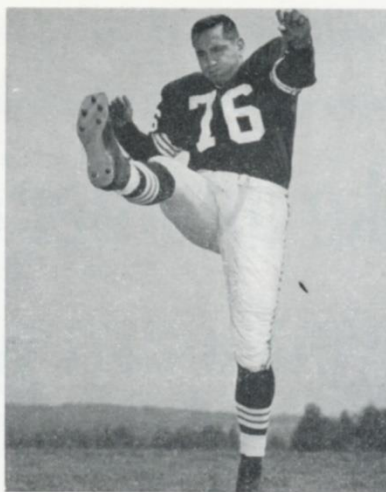
Why did Sam set up the defenses the way he did? **Read Sam Huff's**

**Analysis — EXCLUSIVE in Tomorrow's  
JOURNAL-AMERICAN**





RAY RENFRO



LOU GROZA



JIM RAY SMITH

★  
★  
★  
*BROWN*  
★  
★  
★



MILT PLUM

★  
★  
★  
*STARS*  
★  
★  
★



MIKE McCORMACK



WALT MICHAELS



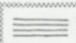

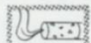
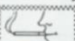
BOB GAIN



# Don't smoke another cigarette until you learn what VICEROY'S *Deep weave*\* Filter can do for your taste!




\*Reg. U.S. Patent Office

Pure, Safe Filter Material Woven By Special Process. This remarkable filter starts with the same straight filter strands  as most good filters—then Viceroy weaves them by a special process into the amazing Deep-Weave Filter.  The Deep-Weave Filter weaves and reweaves the smoke—sends every puff deep through the filter to give you wonderful smoothness of taste  a taste that's never rough, never raw! This is the filter you can trust to give you good taste—the perfect filter to go with Viceroy's deep-cured blend.  That's why Viceroy tastes better than ever before! Don't smoke another cigarette until you learn what Viceroy can do for your smoking pleasure!

Only VICEROY'S Got It... At Both Ends!  
*GOT THE FILTER... GOT THE BLEND*



© 1961, BROWN & WILLIAMSON TOBACCO CORPORATION  The Mark of Quality in Tobacco Products



# NFL News and Notes

THE most authentic 1961 college All-America squad of all is herewith presented. It is the two-deep, position-by-position list of players selected in the NFL college draft of Dec. 4. The number before each player's name indicates his selection order among the 280 players drafted. The drafting team is parenthesized. The honor roll:

**ENDS**—4—Gary Collins, Maryland (Browns); 13—Jerry Hillebrand, Colorado (Giants); 29—Bob Mitinger, Penn State (Redskins); 30—Bill Miller, Miami (Vikings),

**TACKLES**—3—Merlin Olsen, Utah State (Rams); 6—Fate Echols, Northwestern (Cards); 16—Joe Carollo, Notre Dame (Rams); 17—Charles Hinton, North Carolina College (Browns).

**GUARDS**—28—Ed Blaine, Missouri (Packers); 43—Roy Winston, L.S.U. (Vikings); 53—Stan Sczurek, Purdue

(Browns); 55—Bill Byrne, Boston College (Eagles).

**CENTERS**—12—Irv Goode, Kentucky (Cards); 22—Ed Pine, Utah (49ers).

**QUARTERBACKS** — 2—Roman Gabriel, North Carolina State (Rams); 10—John Hadl, Kansas (Lions).

**OTHER BACKS**—1—Ernie Davis, Syracuse (Redskins); 5—Bob Ferguson, Ohio State (Steelers); 7—Ronnie Bull, Baylor (Bears); 8—Lance Al-

worth, Arkansas (49ers); 9—Wendell Harris, L.S.U. (Colts); 11—Leroy Jackson, Western Illinois (Browns).

\* \* \*

Pro football fans can do their part toward helping the Pro Football Hall of Fame get under way. The Hall of Fame Committee in Canton, Ohio (P. O. Box 550), is canvassing the nation for memorabilia which will be displayed in the shrine. Anyone possessing collector's items or knowing where they can be found is asked to write. Ground will be broken in Canton next spring, with completion scheduled for mid-1963. Dedication ceremonies, including the enshrinement of the first eleven former great pro players will be held in conjunction with an NFL pre-season game at Canton late next summer.

## NATIONAL LEAGUE LEADERS

### RUSHING

1. Brown, Cleveland ..... 279 for 1,300 yds.
2. Taylor, Green Bay ..... 225 for 1,229 yds.
3. WEBSTER, NEW YORK ..... 175 for 837 yds.

### PASSING

1. Plum, Cleveland ..... 170 of 277 for 2,325 yds.
2. Jurgensen, Philadelphia ..... 208 of 374 for 3,320 yds.
3. Starr, Green Bay ..... 156 of 268 for 2,257 yds.

### RECEIVING

1. Berry, Baltimore ..... 71 for 805 yds.
2. Phillips, Los Angeles ..... 65 for 991 yds.
3. SHOFNER, NEW YORK ..... 62 for 1,033 yds.

### SCORING

1. Hornung, Green Bay ..... 146 pts.
2. Taylor, Green Bay ..... 96 pts.
3. Moore, Baltimore ..... 90 pts.

# Enjoy em at the Game and at Home

Here at the Yankee Stadium, reach for MRS. WAGNER'S delicious individual pies. At home, enjoy the fresh-baked goodness of MRS. WAGNER'S family-size pies. Both ways, you're in for real enjoyment.

## Why bake when you can buy

*Mrs. Wagner's Pies*





After  
the game,  
enjoy  
**Schenley**  
the only whisky with whipped-in smoothness



SCHENLEY DISTILLERS CO., N.Y.C. • BLENDED WHISKY, 86 PROOF, 65% GRAIN NEUTRAL SPIRITS



## ***Giant Blackboard:***

**T**HE big bruisers who man the defensive rush lines in pro football are highly resistant to head-on blocking assault. So most plays are designed to set up angle blocks, on which the target lineman is hit from the side or moved in the direction he already is induced to head.

Line blocks do not lend themselves too readily to diagramming but Ed Kolman, the Giants' offensive line coach, has obliged with a few drawings that may help to put across the general idea. His contributions have been reproduced in the adjacent column.

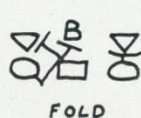
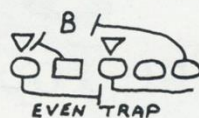
They show three different patterns of interior line blocking, all more or less designed to produce the same effect.

On the “odd trap,” the center and right guard shoot through for angle blocks on the defensive right tackle and middle linebacker. The left guard pulls to the right and sideswipes the defensive left tackle, who is let through unimpeded.

On the "even trap," the center again cross blocks on the right tackle. But this time the tight right end or, it could be, the right tackle goes through for the middle-linebacker, and both guards pull.

The left guard again blocks the left tackle, who is expected to be further influenced to charge by the pulling of the right guard, who takes the defender playing opposite the tight end.

Why the “odd” and “even” descriptions? This



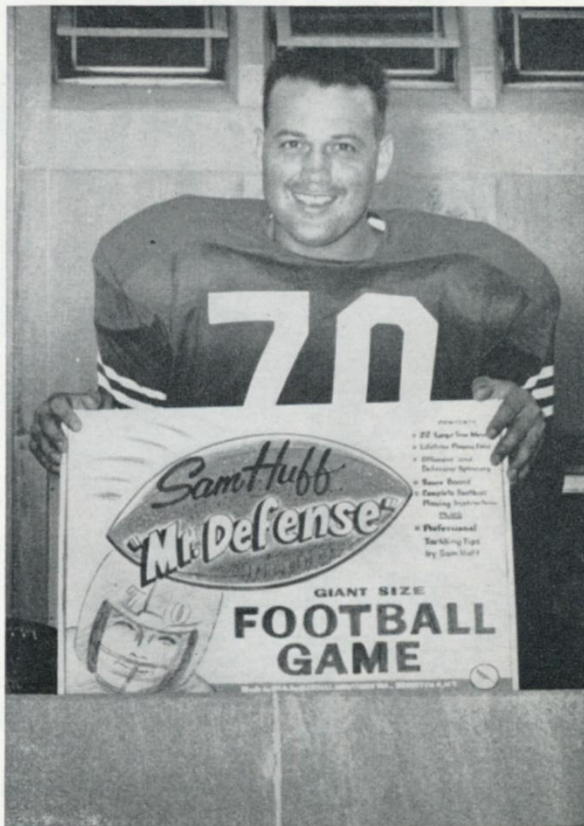
is coachy mumbo-jumbo. "Odd" means that the middle linebacker is considered as playing on the defensive line, head-and-head to the offensive center, a characteristic of an "odd" (number of men on the line) defense. "Even" means that the middle line-backer is considered as playing out of the line, leaving the offensive center frontally unopposed, a characteristic of an "even" (number of men on the line) defense.

On the "fold," the center crosses as before on the right tackle and the right guard fires out straight ahead (in a zone block) on the left tackle. The left guard takes a lateral step to the right, then slants behind the center and hits the middle linebacker.

These three blocking patterns might be used at different times on basically the same play. The variation helps disguise the point of attack. So now you know everything—well a little bit, any way—about line blocking.

# SAM HUFF'S MR. DEFENSE

- SENSATIONAL NEW FOOTBALL GAME.
- REAL FOOTBALL STRATEGY WITH THE THRILLS OF OFFENSIVE PLAYS AND DEFENSIVE FORMATIONS.
- ON SALE AT ALL LEADING RETAIL OUTLETS.
- THANKS TO THE THOUSANDS OF PEOPLE WHO HAVE MET SAM DURING HIS PERSONAL APPEARANCES — BE SURE TO GET YOUR GAME FOR CHRISTMAS AT KORVETTE'S, KLEIN'S, GRANDWAY STORES, ALEXANDER'S, ROCKAWAY SALES OR BARGAINTOWN.
- IN THE EVENT YOUR FAVORITE STORE IS TEMPORARILY OUT OF "MR. DEFENSE" PLEASE MAIL \$8.00 TO BOX 35, BROOKLYN 11, N. Y. AND THE GAME WILL BE MAILED TO YOU POSTPAID.



MADE BY CARDINAL INDUSTRIES, BROOKLYN 11, N. Y.



# League Leaders!

The Top Bourbon... Like the Top Football Team... has Quality!

## J.W. DANT WORLD'S LARGEST SELLING BONDED BOURBON



Take your choice of the two Kentucky favorites—Dant 100 Proof Bottled in Bond or J. W. Dant 86 Proof... its mild, light, lower-priced partner.

### 1961 NATIONAL LEAGUE LEADERS

Rushing .....	Brown, Cleveland, 279 for 1,300 yds.
Passing .....	Plum, Cleveland, 170 of 277 for 2,325 yds.
Receiving .....	Berry, Baltimore, 71 for 805 yds.
Scoring .....	Hornung, Green Bay, 146 pts.
Punting .....	Lary, Detroit, 48.3-yd. avg.
Punt Returns .....	Wood, Green Bay, 13 for 212 yds.
Kick-Off Returns .....	Bass, Los Angeles, 20 for 636 yds.
Interceptions .....	LYNCH, NEW YORK, 9 for 60 yds.





# **WEAR Official National Football League**

**CARDIGAN  
FLEECERS**

SIZES 6-16

**T-SHIRTS**

SIZES 2-16

**HOODED  
FLEECERS**

SIZES 6-16

**CREW NECK  
FLEECERS**

SIZES 2-16



**NATIONAL FOOTBALL**



**LEAGUE**

made EXCLUSIVELY by

**Norwich<sup>®</sup>**

Multi-color NFL design • Washable • Shrink-resistant

Available in stores everywhere!

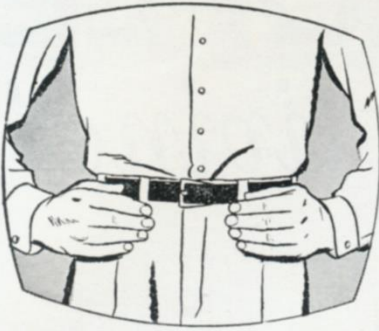
**NORWICH MILLS INC., NORWICH, N.Y.**



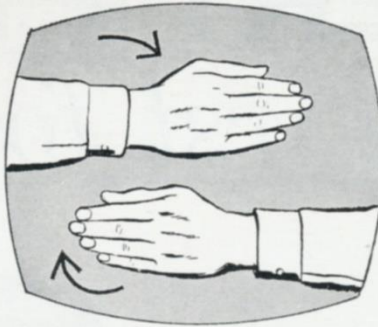




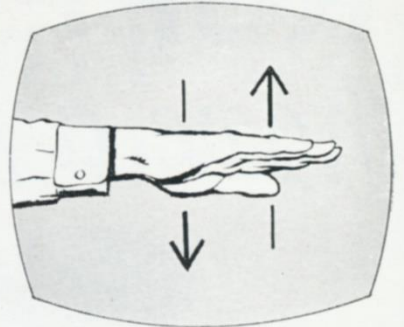
# DO YOU KNOW YOUR SIGNS?



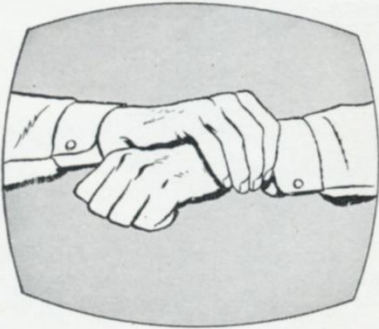
Arms akimbo signal flashed to indicate team off-side.



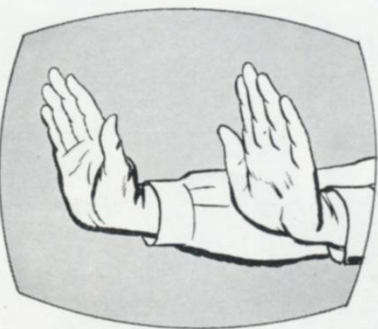
Signal used for illegal position or procedure.



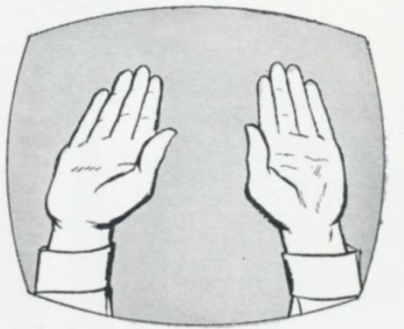
Official indicates player is charged with personal foul.



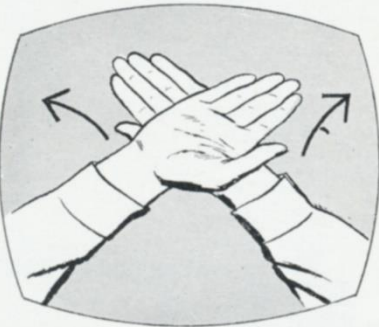
This signal means illegal use of hands or arms.



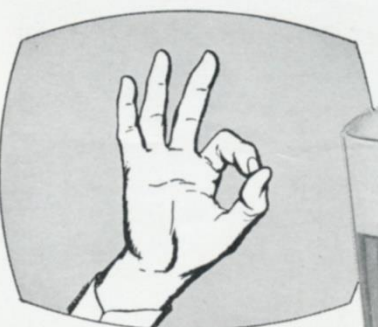
Signal for forward pass or kick catching interference.



Familiar signal for touch-down or field goal.



Team — or official — calls for time out.



Fan calls for Ballantine beer—the 'crisp' refresher!

Ask the man for  
**Ballantine beer**

SEE WHY OVER 5 MILLION GLASSES ARE ENJOYED EVERY DAY BY PEOPLE WHO KNOW QUALITY WHEN THEY TASTE IT!



P. BALLANTINE & SONS, NEWARK, N. J.





# RUPPERT PEOPLE

have a thirst for living!



A *thirst* for living means a *taste* for Ruppert! Ruppert is the light lively beer for people who live livelier lives. Four generations of the Ruppert family have seen to it *personally* that Ruppert has the finest flavor your money can buy. So live a little! Open up a Ruppert and swallow deep.

*Have a Ruppert! Brewed since 1867 by four generations of the Ruppert family!*

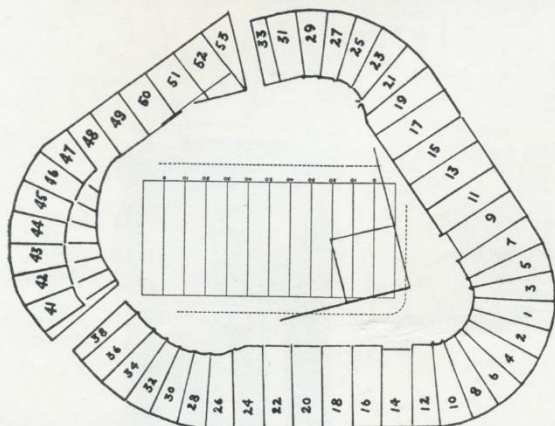


*Bright  
new  
label...  
same  
fine  
Ruppert!*

© 1960, JACOB RUPPERT, NEW YORK CITY



## Yankee Stadium Services & Facilities



**LOST AND FOUND**—Direct inquiries and reports to the office of the Yankee Stadium superintendent.

**REST ROOMS**—Men: Gate 2, Press Gate, Stadium Club (lower, upper), Gate 6; Lower Sections 34, 8, 6, 15, 21, 27; Mezzanine Sections 27, 15, 5, 18, 28; Upper Sections 34, 20, 6, 15, 21; Bleacher Sections 43, 47, 52. Women: Gate 2, Gate 4, Stadium Club (lower, upper), Gate 6; Lower Sections 28, 20, 5, 15, 27; Mezzanine Sections 21, 15, 6, 18, 34; Upper Sections 28, 20, 5, 15, 29; Bleacher Sections 47, 52.

**PUBLIC TELEPHONES**—Gate 2, Gate 4, Press Gate, Stadium Club (lower, upper), Gate 6, Lower Sections 24, 14, 12, 11, 17, 27; Mezzanine Sections 27, 17, 7, 8, 22; Upper Sections 34, 20, 12, 8, 9, 19, 27; Bleacher Sections 41, 49, 51.

### PARKING AREAS

#### YANKEE LOTS

South side 157th St., Ruppert Pl. to Cromwell Ave.  
Between Cromwell and River Aves., on 153rd St.  
163rd to 164th Sts., between River and Gerard Aves.  
151st St. and River Ave., opposite Bronx County Jail.

#### PRIVATELY-OWNED LOTS

West side Ruppert Pl., between 157th and 158th Sts.  
West side River Ave., between 151st and 153rd Sts.  
West side River Ave. and 157th St.  
East side River Ave., North of 153rd St.  
East side River Ave., North of 151st St.  
East side River Ave., 164th to 165th Sts.  
East side River Ave., South of 162nd St.  
Farmer's Square—Cromwell Ave. Roadway, and  
West of 151st St. Viaduct, opposite Bronx County Jail.  
East 168th St. and River Ave.

#### GARAGES

Cromwell Ave. and 157th St.  
East side of River Ave., South side of 158th St.  
East side of River Ave., North side of 157th St.  
East side of River Ave., South side of 157th St.  
North side of 158th St., between River and Gerard Aves.  
East side of River Ave., corner of 168th St.

Also, the Polo Grounds lot again will be in service for all Giant games at the Stadium.

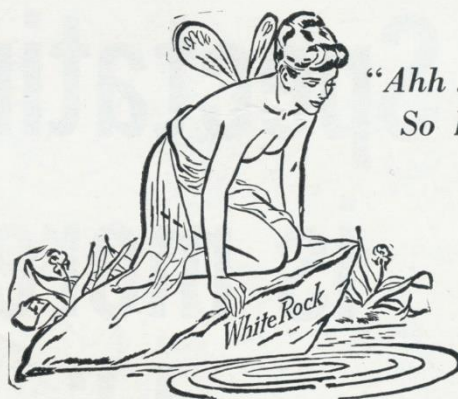
### SOUVENIR PRICE LIST

PICTURES (12 Players)	.25
PAST AND PRESENT PICTURES (36 Players)	.50
PENNANT (Large)	1.00
LUCKY MASCOT (Action Doll)	1.00
KNITTED HAT (Colors)	1.50
OFFICIAL TYPE HELMET (All Sizes)	5.00

Souvenir Stands located at Gates 2, 4, 6; Lower Sections 7, 14; Bleacher Sections 43, 50.

These items also are available by mail from Harry M. Stevens, Inc., Souvenir Department, Yankee Stadium, Bronx 51, N. Y.

## SEASON AFTER SEASON...



"Ahh ...  
So Pure!"

She's New York's  
Best Girl!

**White Rock**  
for sparkling fine beverages

The White Rock Girl stays so popular because the brand she represents satisfies so completely! Thanks to *Superior carbonation*, a White Rock drink keeps sparkling from the first pour to the last sip. So for a lighter-livelier drink every time, don't just mix it... *White Rock it!*





**Spectating  
is more  
sparkling  
...with  
Canada Dry  
Ginger Ale...**

**So is socializing after the game  
with Canada Dry Ginger Ale  
in your tall drinks.**





# NFL Officials' Signals



Offside



Crawling, Pushing,  
Helping Runner



Illegal Motion



Illegal Pass



Unsportsmanlike  
Conduct



Pass Interference



Holding, Illegal  
Use of Hands



Personal Foul  
(indication of  
offense follows)



Delay of Game,  
Excess Time-Out



Touchdown, Field  
Goal, Extra Point



Safety



Loss of Down



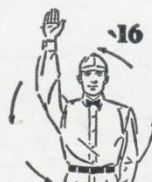
Penalty Declined,  
Incomplete Pass,  
Missed Goal



First Down



Dead Ball



No Time-Out or  
Time In with Whistle



Time-Out

Enjoy  
**MELROSE**  
Whiskey Born Great!



## "A Toast to Greatness"

There's royal pleasure for you in Melrose . . . an incredibly smooth blend selected from our treasured reserves. Rich and mellow—yet light and appealing. Tonight, make yours MELROSE—the toast to greatness.



SUPERLATIVE BLENDED WHISKEY, 86 PROOF, 65% GRAIN NEUTRAL SPIRITS, MELROSE DISTILLERS CO., NEW YORK, N. Y.



# NFL Pairings and Results

Home Team	Visiting Team
NEW YORK	CLEVELAND
Won 10, Lost 3	Won 8, Lost 5
10—St. Louis _____ 21	20—at Philadelphia _____ 27
17—at Pittsburgh _____ 14	20—St. Louis _____ 17
24—at Washington _____ 21	25—Dallas _____ 7
24—at St. Louis _____ 9	31—Washington _____ 7
31—at Dallas _____ 10	17—Green Bay _____ 49
24—Los Angeles _____ 14	30—at Pittsburgh _____ 28
16—Dallas _____ 17	21—at St. Louis _____ 10
53—Washington _____ 0	13—Pittsburgh _____ 17
38—Philadelphia _____ 0	17—at Washington _____ 6
42—Pittsburgh _____ 21	45—Philadelphia _____ 24
37—at Cleveland _____ 21	21—New York _____ 37
17—Green Bay at Milw. _____ 20	38—at Dallas _____ 17
28—at Philadelphia _____ 24	14—at Chicago _____ 17
—Cleveland _____	—at New York _____
361	213 312 263

WASHINGTON	DALLAS
Won 0, Lost 12, Tied 1	Won 4, Lost 8, Tied 1
3—at San Francisco _____ 35	27—Pittsburgh _____ 24
7—at Philadelphia _____ 14	21—Minnesota _____ 7
21—New York _____ 24	7—at Cleveland _____ 25
7—at Cleveland _____ 31	28—at Minnesota _____ 0
0—at Pittsburgh _____ 20	10—New York _____ 31
0—St. Louis _____ 24	7—Philadelphia _____ 43
24—Philadelphia _____ 27	17—at New York _____ 16
0—at New York _____ 53	17—St. Louis _____ 31
6—Cleveland _____ 17	7—at Pittsburgh _____ 37
28—at Dallas _____ 28	28—Washington _____ 28
6—Baltimore _____ 27	13—at Philadelphia _____ 35
24—at St. Louis _____ 38	17—Cleveland _____ 38
14—Pittsburgh _____ 30	13—at St. Louis _____ 31
—Dallas _____	—at Washington _____
140	368 212 346

CHICAGO	MINNESOTA
Won 7, Lost 6	Won 3, Lost 10
13—at Minnesota _____ 37	37—Chicago _____ 13
21—at Los Angeles _____ 17	7—at Dallas _____ 21
0—at Green Bay _____ 24	33—at Baltimore _____ 34
31—at Detroit _____ 17	0—Dallas _____ 28
24—Baltimore _____ 10	24—San Francisco _____ 38
31—San Francisco _____ 0	7—Green Bay _____ 33
21—at Baltimore _____ 20	10—Green Bay at Milw. _____ 28
14—at Philadelphia _____ 16	17—at Los Angeles _____ 31
28—Green Bay _____ 31	28—Baltimore _____ 20
31—at San Francisco _____ 41	10—Detroit _____ 37
28—Los Angeles _____ 24	28—at San Francisco _____ 38
15—Detroit _____ 16	42—Los Angeles _____ 21
17—Cleveland _____ 14	7—at Detroit _____ 13
—Minnesota _____	—at Chicago _____
274	267 250 355

## NATIONAL LEAGUE STANDING

### EASTERN CONFERENCE

	W.	L.	T.	Pct.	Pts.	O.P.
NEW YORK _____	10	3	0	.769	361	213
Philadelphia _____	9	4	0	.692	334	273
Cleveland _____	8	5	0	.615	312	263
Pittsburgh _____	6	7	0	.462	295	267
St. Louis _____	6	7	0	.462	259	267
Dallas _____	4	8	1	.333	212	346
Washington _____	0	12	1	.000	140	368

### WESTERN CONFERENCE

*Green Bay _____	10	3	0	.769	367	206
Detroit _____	8	4	1	.667	246	231
San Francisco _____	7	5	1	.583	322	245
Baltimore _____	7	6	0	.538	275	283
Chicago _____	7	6	0	.538	274	267
Los Angeles _____	4	9	0	.308	246	309
Minnesota _____	3	10	0	.231	250	355

\*Clinched Conference Championship.

Home Team	Visiting Team
DETROIT	PHILADELPHIA
Won 8, Lost 4, Tied 1	Won 9, Lost 4
17—Green Bay at Milw. _____ 13	27—Cleveland _____ 20
16—at Baltimore _____ 15	14—Washington _____ 7
0—San Francisco _____ 49	27—St. Louis _____ 30
17—Chicago _____ 31	21—Pittsburgh _____ 16
14—Los Angeles _____ 13	20—at St. Louis _____ 7
14—Baltimore _____ 17	43—at Dallas _____ 7
28—at Los Angeles _____ 10	27—at Washington _____ 24
20—at San Francisco _____ 20	16—Chicago _____ 14
45—at St. Louis _____ 14	21—at New York _____ 38
37—at Minnesota _____ 10	24—at Cleveland _____ 45
9—Green Bay _____ 17	35—Dallas _____ 13
16—at Chicago _____ 15	35—at Pittsburgh _____ 24
13—Minnesota _____ 7	24—New York _____ 28
—Philadelphia _____	—at Detroit _____
246	231 334 273

LOS ANGELES	GREEN BAY
Won 4, Lost 9	Won 10, Lost 3
24—at Baltimore _____ 27	13—Detroit at Milw. _____ 17
17—Chicago _____ 21	30—San Francisco _____ 10
24—Pittsburgh _____ 14	24—Chicago _____ 0
0—at San Francisco _____ 35	45—Baltimore _____ 7
13—at Detroit _____ 14	49—at Cleveland _____ 17
14—at New York _____ 24	33—at Minnesota _____ 7
10—Detroit _____ 28	28—Minnesota at Milw. _____ 10
31—Minnesota _____ 17	21—at Baltimore _____ 45
17—San Francisco _____ 7	31—at Chicago _____ 28
17—at Green Bay _____ 35	35—Los Angeles _____ 17
24—at Chicago _____ 28	17—at Detroit _____ 9
21—at Minnesota _____ 42	20—New York at Milw. _____ 17
34—Baltimore _____ 17	21—at San Francisco _____ 22
—Green Bay _____	—at Los Angeles _____
246	309 367 206

ST. LOUIS	PITTSBURGH
Won 6, Lost 7	Won 6, Lost 7
21—at New York _____ 10	24—at Dallas _____ 27
17—at Cleveland _____ 20	14—New York _____ 17
30—at Philadelphia _____ 27	14—at Los Angeles _____ 24
9—New York _____ 24	16—at Philadelphia _____ 21
7—Philadelphia _____ 20	20—Washington _____ 0
24—at Washington _____ 0	28—Cleveland _____ 30
10—Cleveland _____ 21	20—San Francisco _____ 10
31—at Dallas _____ 17	17—at Cleveland _____ 13
14—Detroit _____ 45	37—Dallas _____ 7
0—at Baltimore _____ 16	21—at New York _____ 42
27—at Pittsburgh _____ 30	30—St. Louis _____ 27
38—Washington _____ 24	24—Philadelphia _____ 35
31—Dallas _____ 13	30—at Washington _____ 14
—Pittsburgh _____	—at St. Louis _____
259	267 295 267

## SAN FRANCISCO vs. BALTIMORE

San Francisco	Baltimore
Won 7, Lost 5, Tied 1	Won 7, Lost 6
35—Washington _____ 3	27—Los Angeles _____ 24
10—at Green Bay _____ 30	15—Detroit _____ 16
49—at Detroit _____ 0	34—Minnesota _____ 33
35—Los Angeles _____ 0	7—at Green Bay _____ 45
38—at Minnesota _____ 24	10—at Chicago _____ 24
0—at Chicago _____ 31	17—at Detroit _____ 14
10—at Pittsburgh _____ 20	20—Chicago _____ 21
20—Detroit _____ 20	45—Green Bay _____ 21
7—at Los Angeles _____ 17	20—at Minnesota _____ 28
41—Chicago _____ 31	16—St. Louis _____ 0
38—Minnesota _____ 28	27—at Washington _____ 6
17—at Baltimore _____ 20	20—San Francisco _____ 17
22—Green Bay _____ 21	17—at Los Angeles _____ 34
—Baltimore _____	—at San Francisco _____
322	245 275 283

Robert W. Kelly Publishing Corp.

PLEASE USE ENTRANCE RAMP NEAREST YOUR SEAT





Let the winning taste of Seagram's 7 Crown bring its own special satisfaction to a great Autumn day. After the game, say Seagram's and be Sure.






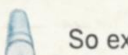
# Expect more, get more, from L&M

*more body in the blend*  
*more flavor in the smoke*  
*more taste through the filter*



The filter cigarette for people who really like to smoke... L&M in the "red-headed" pack or box.

It's the rich-flavor leaf  the longer-aged, extra-cured leaf among L&M's

choice tobaccos... that now lets you expect more, and get more, from filter smoking. There's actually more rich-flavor leaf in L&M than even in unfiltered cigarettes. You get more body in the blend,  more flavor in the smoke,  more taste through the filter.  So expect more... and get more... from filter smoking.

Have an L&M... the cigarette that smokes heartier as it draws freely through the clean, pure-white Miracle Tip.