



**YANKEE STADIUM**

**NEW YORK  
GIANTS**

**DALLAS  
COWBOYS**

OCTOBER 20, 1963

OFFICIAL PROGRAM 50 CENTS





# Marlboro

You get a lot to like

FILTER, FLAVOR, PACK OR BOX



OFFICIAL PROGRAM

# NEW YORK GIANTS



vs. DALLAS COWBOYS

YANKEE STADIUM • Oct. 20, 1963

Volume 39

Number 2

## CONTENTS

Giants Heads Stay High .....	3
They Coach the Giants .....	5
Close-Ups of New Giants .....	7
Giant Linebackers .....	9
Giant Receivers .....	11
Next: The Eagles .....	13
Giant Jottings .....	15
Giant Statistics .....	16
A Record for Y. A. ....	17
Giant Linemen .....	19
Giant Deep Backs .....	21
Giants Roster .....	22
Giants Line-Ups .....	23-24
Cowboys Line-Ups .....	23-24
Cowboys Roster .....	27
The Cowboys .....	29
Cowboy Players .....	31
Sizing Up Today's Games .....	33
Giants for Kicks .....	35
Giant Runners .....	37
NFL Officials' Signals .....	39
Giant Rushliners .....	41
Yankee Ticket Information .....	43
Yankee Stadium Services .....	45
NFL Statistics .....	47
NFL Pairings, Results and Standings .....	48

## New York Football Giants

JOHN V. MARA .....	President
WELLINGTON T. MARA .....	Vice-President
TIMOTHY J. MARA .....	Secretary-Treasurer
RAYMOND J. WALSH .....	General Manager
AL SHERMAN .....	Head Coach
JIM LEE HOWELL .....	Director of Personnel
ED KOLMAN .....	Line Coach
KEN KAVANAUGH .....	End Coach
KYLE ROTE .....	Backfield Coach
ANDY ROBUSTELLI .....	Defensive Player-Coach
JIM PATTON .....	Assistant Defensive Player-Coach
EMLEN TUNNELL .....	Assistant Coach-Scout
KEN STRONG .....	Kicking Coach
JOHN JOHNSON, SID MORET and JOHN DZIEGIEL .....	Trainers
DR. FRANCIS SWEENEY .....	Physician
DR. ARTHUR CROKER .....	Dentist
DON SMITH .....	Director of Publicity
DAN RUBIN .....	Photographer

Cover Illustration by Carol Johnson

This book published by

HARRY M. STEVENS, Inc., 320 Fifth Ave., New York 1, N.Y.

Care  
who wins  
today?

Naturally  
I care.



The fan  
who cares prefers  
**CARSTAIRS**

(It's always in good taste)

VICTOR FISCHEL & CO., INC., N.Y. CARSTAIRS BLENDED WHISKEY, 86 PROOF, 72% GRAIN NEUTRAL SPIRITS



# Quality



Products of *The American Tobacco Company*

*"Tobacco IS OUR MIDDLE NAME"*



# Giants Heads Stay High



**GIANTS OF THE ATTACK:** Left to right, Hugh McElhenny, Alex Webster, Y. A. Tittle, Del Shofner, Frank Gifford.

**L**IKE the rest of us, the Giants were bitterly disappointed at last Sunday's loss to the Browns. The defeat makes the road ahead a lot rougher to travel. But, even in disappointment, Coach Al Sherman and his men held their heads high.

They had nothing to be ashamed of. They had played a good game. Unfortunately, the Browns had played even a better one, as Jimmy Brown, unquestionably the greatest running back who has ever sunk a cleat into the barred turf of the gridiron, turned in one of his greatest performances by gaining 209 yards by running and pass-catching and scoring three touchdowns.

Today, in the Dallas Cowboys, the Giants face another stern test. Like Cleveland, Dallas packs a heavy ground wallop and has superlative runners in Don Perkins and Amos Marsh. And the Cowboys, after a sorry start, got clicking last Sunday and upended the Detroit Lions, a Western stalwart, 17-14.

As a former Giant player and coach, Tom Landry can be depended to have his Dallas squad "up" for this game. The Cowboys

have given the Giants fits here on other occasions.

The defeat by the Browns left the Giants two games behind Cleveland and one game in back of the St. Louis Cardinals in the Eastern standings. With nine games to play, this deficit is nothing to get panicky about. The Browns, and the Cardinals, will have days when the ball doesn't bounce right for them, too. No team can hold a peak for 14 weeks in the rugged competition of the National Football League.

However, the Giants are in a situation where they have precious little margin for error. To stay in the race, they must function at their best for the rest of the way. Over recent years, that best Giant output has produced gratifying results. There's no reason to believe that, if it is forthcoming, it won't do so again.

The Giants still have the assets that made them the East's top power during the last few years. Y. A. Tittle continues to pass magnificently and to direct the attack with resourcefulness and imagination. Del Shofner, Frank Gifford, Joe Walton, Joe Morrison and their fellow pass-catchers of the receiving brigade retain the

knack of getting clear.

The offensive line has protected Tittle well, by and large, and has blocked solidly for Phil King, Alex Webster and Hugh McElhenny, when these proven runners have been able to play, and for Morrison, who has done the bread-and-butter work in the absence of the others.

For the most part, the defensive platoon has been up to snuff, too, and again has displayed that opportunism that has been a Giant trademark for years.

If anything has been lacking, it has been coordination of all these abilities that have made the Giants a great football team. The stuff to win is there. The job is to make the pieces fall into place and put it all together.

But against Cleveland, except in that unhappy third quarter, the signs were that the Giants are beginning to mesh. This defeat by the Browns was no Pittsburgh debacle. In losing to Cleveland, the Giants certainly played better than in winning against Philadelphia and Washington.

So, all is not lost. There's bright hope yet for the Giants. Don't give up on them. They haven't given up on themselves—and won't.





FAIRLANE 500 SPORTS COUPE

“Dad says he’s solved the car problem once and for all.  
Says his Fairlane has everything!  
Handles like a sports car.  
Has room for all of us  
—and didn’t cost very much.  
That’s why he went up there on that cliff.  
To look for new worlds to conquer.”

TRY TOTAL PERFORMANCE  
FOR A CHANGE!

**FORD**

Falcon • Fairlane • Ford • Thunderbird



# They Coach The Giants



**GIANT COACHING STAFF:** Left to right, Head Coach Al Sherman, Jimmy Palton, Kyle Rote, Andy Robustelli, Emlen Tunnell, Ed Kolman, Ken Kavanaugh.

**T**HE Giant coaching staff is symbolic of the tremendous advances that pro football has made since World War II. From head coach Allie Sherman on down, the men who call the shots for the Giants are 100 percent NFL-trained. That is, they have come up through the NFL ranks as players and have done all their coaching in pro football.

In dedication and know-how, the Giant staff matches any in football and, in line with a long-standing Giant tradition, no group could be more tightly-knit or more mutually-respecting.

Head Coach Sherman's senior aides are Ed Kolman, Ken Kavanaugh and Kyle Rote, all great pro players of the past who are proving themselves as great pro coaches. Andy Robustelli and Jimmy Patton, two great pro players of the present, double up as player-coaches. And, available for consultation and special assignments, are two more great pros of the past, Emlen Tunnell and Ken Strong.

Big Ed Kolman, a Brooklynite who played varsity football at Temple University and earned post-graduate acclaim as a tackle for the Chicago Bears in their 1940-42 heyday, coaches the Giant line. He put in a seven-year term from 1950-56, retired for three years to enter private business, then returned to the Giants in 1960. Ed's enlightened, patient teaching has had much to do with the development of such outstanding Giant linemen as Rosey Brown, Ray Wietecha, Jack Stroud and Darrell Dess.

Ken Kavanaugh, another former Chicago Bears star, coaches the Giant ends and helps Sherman create the pass patterns that have worked so well in recent years. Ken, a college All-America at Louisiana State University who last winter was enshrined in the National Football Foundation's Hall of Fame, has been on the Giant staff since 1955. To such current and recent Giant pass-catching stars as Del Shofner, Frank Gifford, Joe Walton and Kyle Rote, he has imparted the knowledge that enabled him to grab 55 touchdown passes for the Bears.

Kyle Rote retired as an active player at the start of the 1962 season, which would have been his 12th as a Giant. Al Sherman immediately appointed him offensive backfield coach. The Mighty Mustang, as Kyle is called in honor of his legendary varsity feats at Southern Methodist University, is exceptionally well qualified for his new role. He was a brilliant player, both as a halfback and an end; has a keen understanding of all phases of football and enjoys the sincere respect of all those who have played with and against him over the years. Rote's well on his way to high honors in other fields, too. He's the year-round sports director of Station WNEW and much in demand as a radio and TV performer.

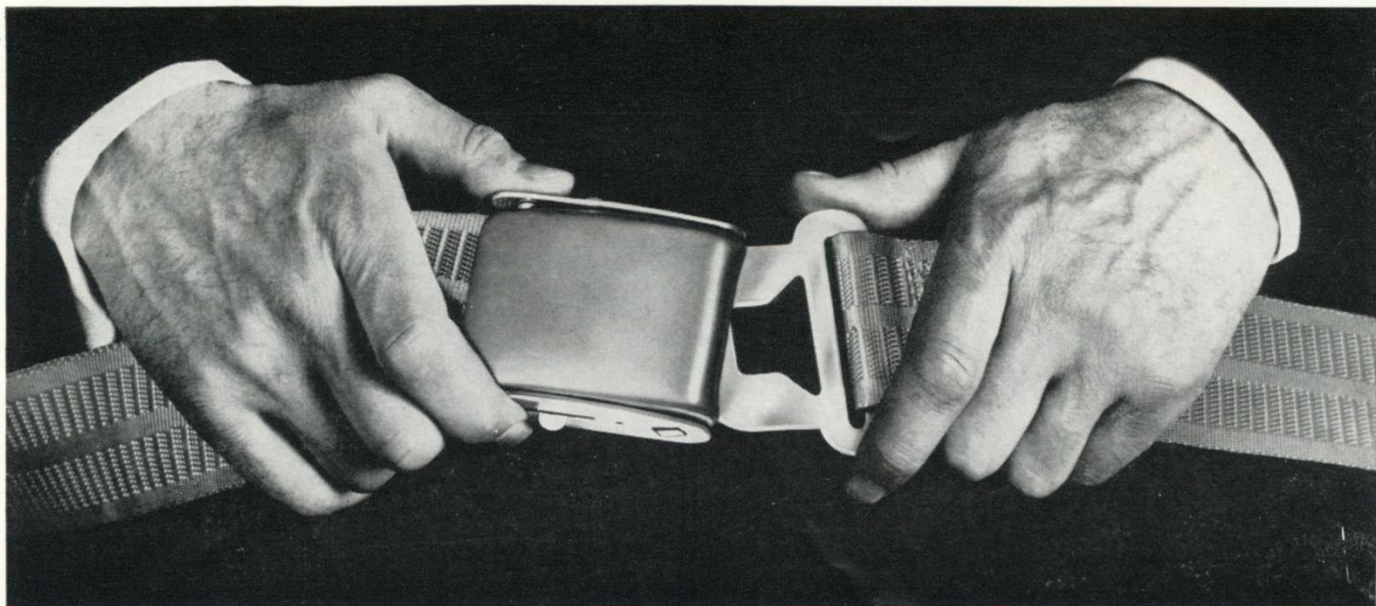
Having been kingpins of the doughty Giants defense since it was put together in its basic present form in 1956, Andy Robustelli and Jimmy Patton are uniquely well-suited to direct it. They know from practice, as well as theory, what will work and, on the field, are in position to make adjustments as necessary. It's a tribute to both that they are able to maintain their personal high standards of play while carrying this added burden.

Em Tunnell's main duties with the Giants are scouting opposing teams and bird-dogging college prospects. But when he's in town, he pitches in and passes along to the active Giants the exhaustive knowledge he acquired in 14 seasons as a crack defensive back and kick-returner for the Giants and, at the end of his career, for Green Bay.

Ken Strong, one of the all-time titans of the pro gridiron, serves as Giant kicking coach. To him belongs much of the credit for Don Chandler's development into an outstanding place-kicker as well as an outstanding punter.

They would insist that the credit for any Giant success belongs to the players, but these men who coach the Giants unquestionably rate a generous share. Hats off to them!





Isn't it time a Chevron Dealer put seat belts in *your* car?

You pay only \$5.95 per belt, including installation. And he can handle the whole job in a few minutes.

Such a small investment. But think about the dividends.

Did you pass a Chevron Station on the way to the game? Then *stop* there on the way back. Your Dealer will make arrangements to install belts in your car this week — and he'll explain why the National Safety Council believes they belong in *every* car.

The belts your Chevron Dealer is offering are made by Davis Aircraft of rugged, 100% nylon. They have strong, two-piece metal buckles that can be opened instantly with one hand. The

belts are lightweight, comfortable, fully adjustable. They exceed all SAE standards, and even meet the tough GSA requirements established by the U.S. government.

If you haven't had belts installed yet, have it done at a Chevron Station. And while you're there, be sure to ask your Chevron Dealer to fill your tank with Chevron Supreme — the great super-premium gasoline for "top-form" performance.



*At the sign of the CHEVRON we take better care of your car*





# Close-Ups of New Giants

Photographer Ken Regan's camera provides close-up views of the new Giants in action during pre-season and early-season games on the road. There are many familiar names on the Giants but Allie Sherman, who does not believe in standing still, also has made many key additions. You'll be seeing a lot of these new Giants, and others, as the season unfolds.



Eddie Dove (48) returns kicks.



Glynn Griffing (15) has poise and promise.



Hand-fighting John LoVetere (76) is hard to hold out.



Hugh McElhenny (39) has a genius for finding daylight.

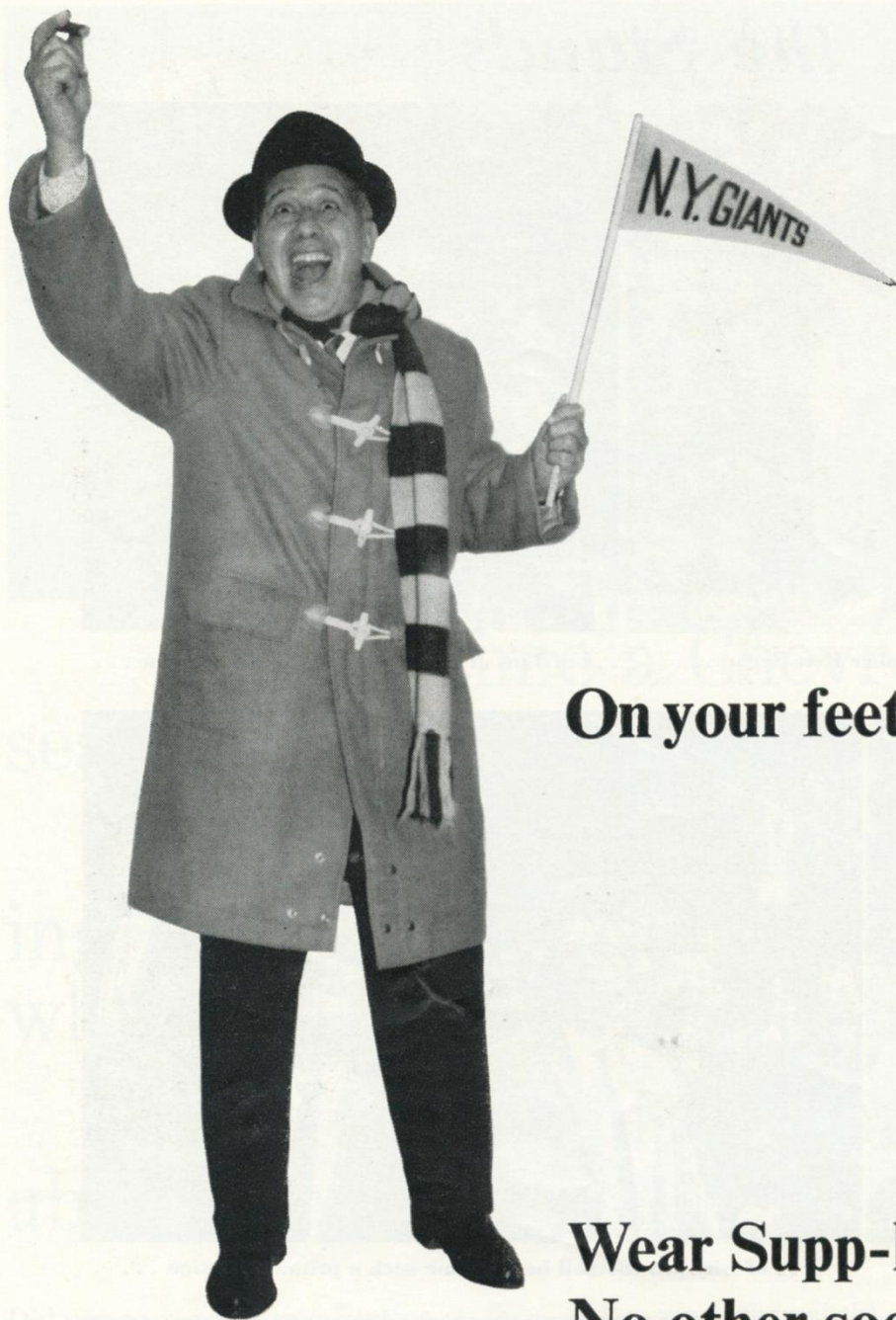


Charlie Killett (37) runs fast and fearlessly.



Leo Kirouac (71) bolsters the special units and kicks, too.





**On your feet a lot?**

**Wear Supp-hose® Socks.  
No other sock can do as  
much for you.**

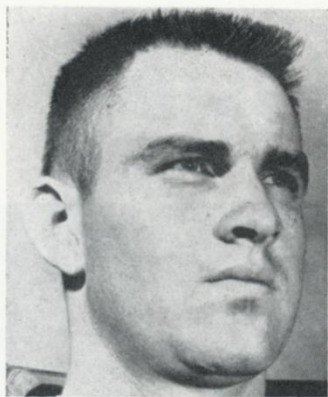
Only Supp-hose has the patented\* two-way rib that gives you the support you want and need. And Supp-hose are as good looking as they are comfortable. \$4.95 a pair

Another fine product of  Kayser-Roth

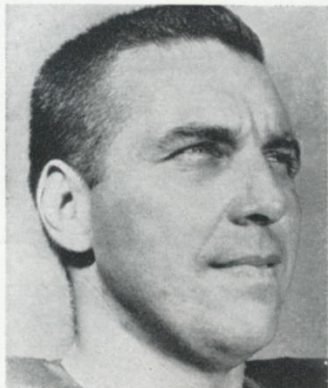
**Supp-hose®**  
SOCKS FOR MEN







BILL WINTER



TOM SCOTT



JERRY HILLEBRAND

# GIANT

## L I N E B A C K E R S



SAM HUFF



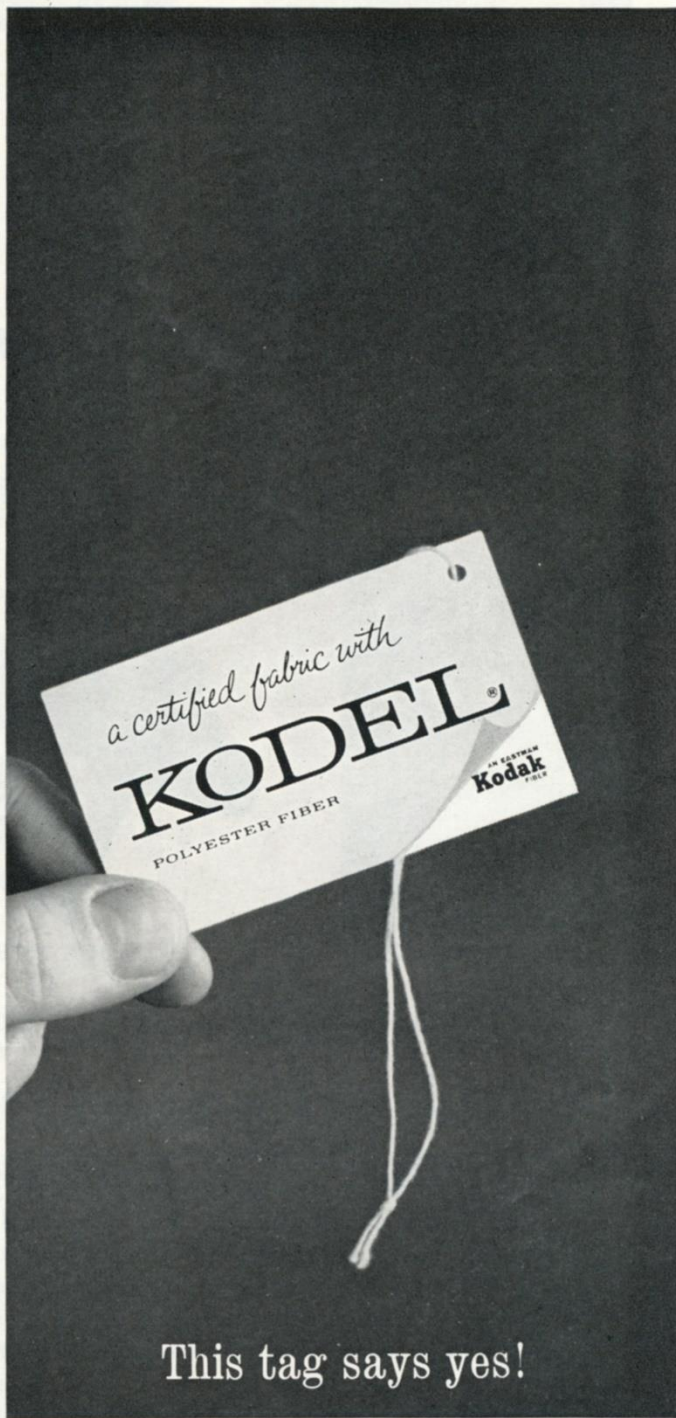
**T**HE way defense is played today in pro football, linebacker is a key position. Certainly, a wider range of responsibilities falls on the linebacker than any other defensive man. He must have the size and power to smash through on "red dog" assignments, the strength and determination to stand up under massive head-on assaults and the speed and range to cover pass-receivers in the flat zones. The Giants are fortunate in having men who possess these qualifications. Their close-support trio is composed of Bill Winter, Sam Huff and Tom Scott, reading from left to right as they line up on the field. The 220-pound Winter, who hails from little St. Olaf College, cracked the line-up as a rookie last year. Huff, 230, is an eight-year pro who has won all-league rating several times. Scott, a topnotch end in the days of the five-man rushline, was acquired from the Eagles in a 1959 trade. In the bullpen is 240-pound Jerry Hillebrand, the No. 1 draft choice of 1962 who spent last season on the taxi squad. And, if further help is needed, handyman Mickey Walker pitches in.



Look for clothing with Kodel at **Weber & Heilbroner**  
New York and New Jersey



Will the sporty new look last?



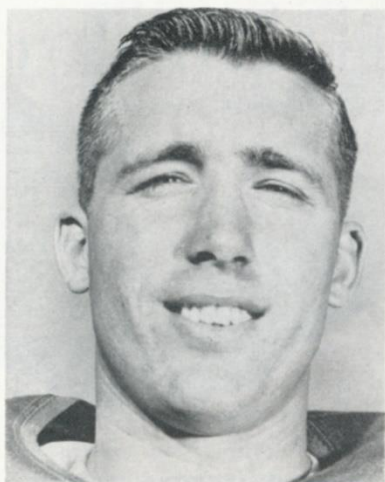
This tag says yes!

Block those wrinkles! Call signals for softness! Score points for fabrics that keep their new look! How? Look for Kodel polyester in the blend when you buy sweaters, shirts, suits, sports coats and slacks. Want to be sure you're getting the *stay*-fresh fiber in the fabric? Check the tag!

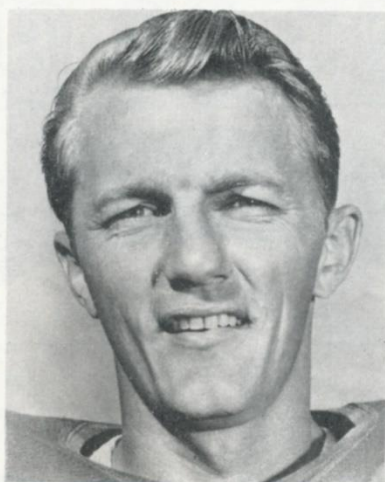
**Count on Kodel...member of the Eastman Kodak family**

EASTMAN CHEMICAL PRODUCTS, INC., subsidiary of Eastman Kodak Company, 260 MADISON AVENUE, NEW YORK 16, NEW YORK. Kodel is the trademark for Eastman polyester fiber





AARON THOMAS



DEL SHOFNER



FRANK GIFFORD

*G  
I  
A  
N  
T*



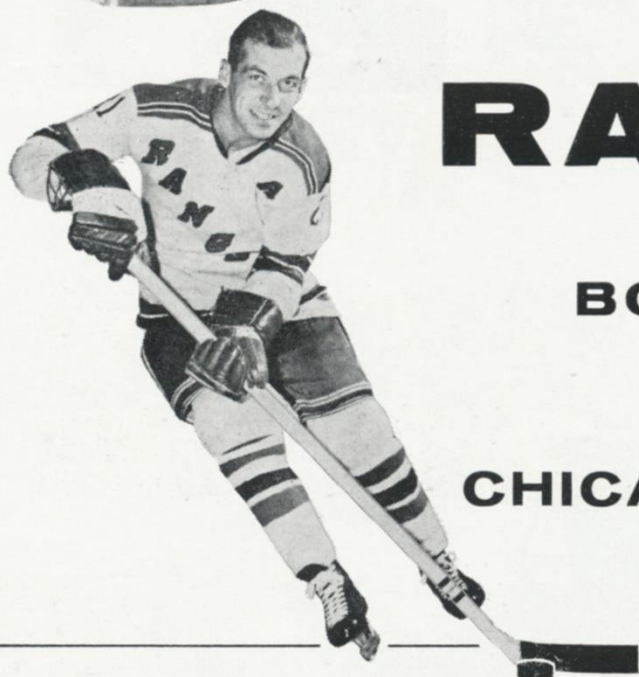
JOE WALTON

*R  
E  
C  
E  
I  
V  
E  
R  
S*



FOLLOWERS of the Giants are poignantly aware that the pass is the New York team's most lethal offensive weapon. But, although from what you read you might sometimes think it, the Giants don't get their aerial touchdowns simply as the result of Y. A. Tittle's launching spirals into the empty air. As he would be the first to admit, the admirable YAT has an admirable set of receivers. Del Shofner and Frank Gifford, the Giant flankers, are geniuses at getting loose for breakaway gains down the deep middle and on those short but vital first-down tosses to the sidelines. Joe Walton, the unsung Giant tight end, also has a rare knack of getting to the right spot at the right time and Aaron Thomas, who spells all three, is developing the same instincts. The Giant inside backs—Alex Webster, Phil King, Hugh McElhenny and Joe Morrison, who also plays on the flank when needed—are gifted receivers, too. As much as any team in football, the Giants are equipped to inundate the defense with flood pass patterns.





# RANGERS

Tonite 7:00 PM

**BOSTON BRUINS**

Next Sunday 7:00 PM

**CHICAGO BLACK HAWKS**

Res: \$1.50, \$2, \$3, \$3.50, \$4, \$5, \$6 tax incl.

# KNICKS

Tuesday 8:30 PM

**LOS ANGELES LAKERS**

Saturday 8:30 PM

**PHILADELPHIA '76ers**

Res: \$2, \$2.50, \$3, \$3.50, \$5 tax incl.

*Reserved Seats at Box Office*





# Next: The Eagles

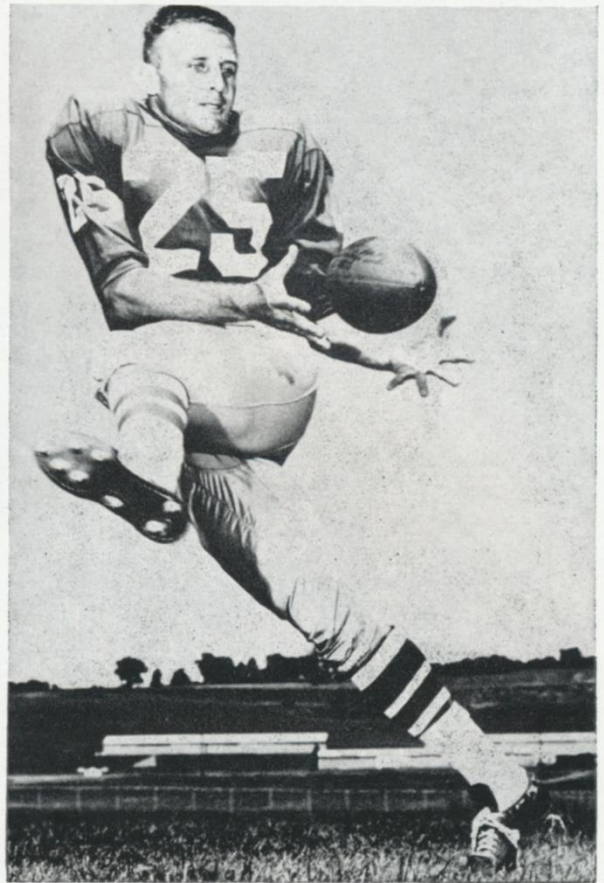
**I**N the next Giant home game, on Nov. 10, the Philadelphia Eagles will bring their high-flying act to the Yankee Stadium. The Giants did better than fair against the Eagles in their first 1963 meeting at Franklin Field three weeks ago, winning 37-14. But that did not reduce the respect Coach Allie Sherman and his men hold for this dynamic Philadelphia team.

The Eagles have long-range striking power calculated to make any foe uneasy. Any point on the field is scoring territory for such breakaway artists as Tommy McDonald and Pete Retzlaff, on pass receptions, and Timmy Brown and Ted Dean, on scrimmage runs or kick returns.

Sonny Jurgensen's normally lethal passing has suffered because of arm trouble but he is beginning to get sound of limb again and, meanwhile, King Hill has been doing a good job of spelling him at quarterback.

This game has the makings of a real thriller and those able to get to the Stadium to see it can count themselves as lucky to be members of one of the nation's most exclusive clubs—Giant Ticket-Holders, Inc.

Meanwhile, the Giants will be on TV, for all to behold, from Cleveland and Dallas the next two Sundays.



**TOMMY McDONALD**

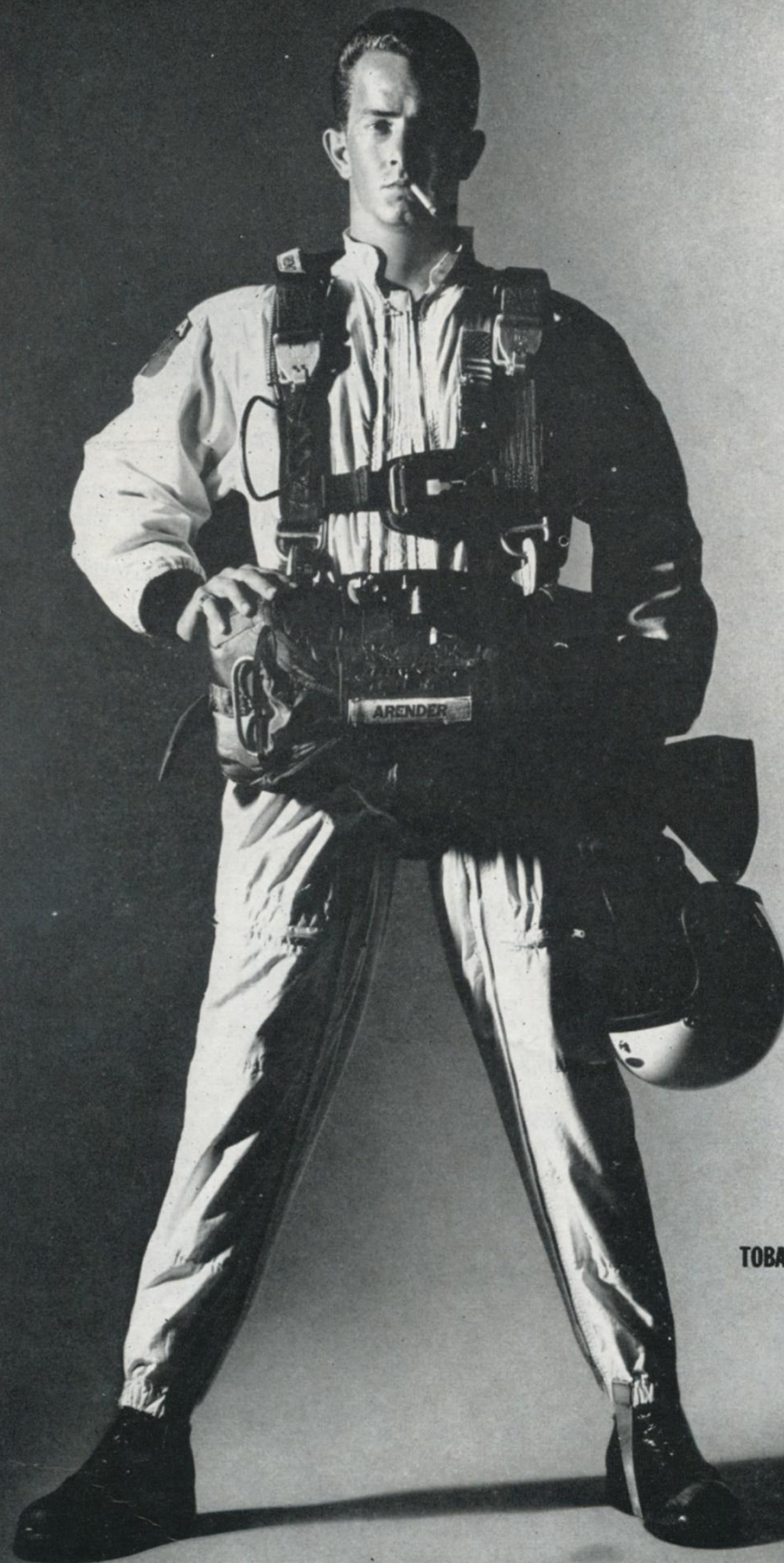
livelier lather  
for really  
smooth shaves!  
1.00

glides on  
deodorant  
protection  
you can trust!  
1.00

cool, exciting—  
brisk as an  
ocean breeze!  
1.25

*Old Spice* —with that clean, crisp, masculine aroma!





# CAMEL

## EVERY INCH A MAN'S SMOKE!

Camel has taste that talks a man's language ... flavor that runs deep. Clean-cut. Alert. All there. Get with Camel. Every inch a man's smoke ...his kind of mildness, too!

THE BEST  
TOBACCO MAKES  
THE BEST  
SMOKE!



**JIM ARENDER**—World's Champion Sports Parachutist. His cigarette? Camel, a real smoke!



# Giant Jottings

**T**ODAY'S between-the-halves music-lovers will be the members of the Midland Park (N.J.) High School marching band. From all advance reports, it's a red-hot outfit.

Seldom have tickets for a Giant game been in such great demand as they were for last Sunday's contest with Cleveland. There even were reports of \$5 to \$10 bribe offers by thwarted ticket-seekers to the volunteer chair-tenders or the paraplegics who are the weekly guests of the Giants.

The West Side Association of Commerce of the City of New York will present Y. A. Tittle with a trophy before today's game for being the most valuable Giant player of 1962. Alex Webster received the association's first award, for 1961. The presentation to Tittle will be made by Adm. John M. Will, president of American Export Lines; Robert W. Tuttle, president of Airlines Term-

inal Corp. and James W. Danahy, executive vice-president of the association . . . Jim Katcavage received the Kinney Award (one year's free use of a Kinney System rental car) for being the outstanding Giant against Cleveland.

Jimmy Patton's Stamford, Conn., neighbors will honor the popular Giant safetyman and player-coach, on Sunday night, Dec. 5, following the Redskins game. The party will take place at Laddin's Terrace in Stamford. Tickets, priced at \$12.50 each, may be obtained from William De Leo, P.O. Box 2182, Glenwood, Conn. . . . Another must item on the social calendar is the Section Five Club's annual dinner dance at the Hotel Astor, Nov. 10, after the next home game with the Eagles. Coach Al Sherman of the Giants will be the guest of honor.

The Pro Quarterbacks Club held the first of its seven 1963 luncheons (the club meets after each Giant home game) at Mama Leone's Ristorante last Mon-

day. At the affair, Cleveland's Jimmy Brown demonstrated to the 200 guests that he's just about as fast on his feet on the dais as he is on the football field . . . Among the conversation pieces in football circles these days is Cover Artist Robert Riger's exhibition of football drawings and photographs, entitled "The Pros." The show, which will continue through Nov. 1, is in the main floor gallery of the Bankers Trust Building at Forty-Eighth Street and Park Ave. (280 Park Ave.).

Bill Winter, the Giants' crack sophomore linebacker won eight varsity letters at St. Olaf College in Northfield, Minn. He starred in baseball and basketball, as well as in football. . . . Joe Walton, the Giants' tight end, is a son of the late Frank (Tiger) Walton, one of the Redskins' greatest players. . . . Other Giants may dispute this, but defensive back Dick Pesonen probably is the best golfer on the team. He holds the competitive course record at his home club in Proctor, Minn.

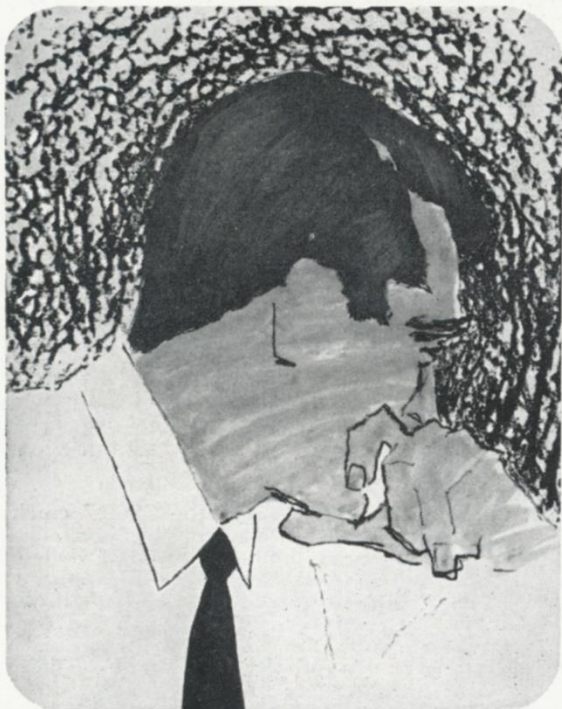
---

# SEE THE GIANTS AWAY ( CLEVELAND OCT. 27 ST. LOUIS NOV. 3 DALLAS DEC. 1 ) GAMES ON CBS 2

( OTHER NFL GAMES ON CHANNEL 2 - GREEN BAY AT DETROIT NOV. 28 / GREEN BAY AT LOS ANGELES DEC. 7 / GREEN BAY AT SAN FRANCISCO DEC. 14 )

CBS ALSO BRINGS YOU "SUNDAY SPORTS SPECTACULAR" SUNDAYS AT 5 PM





## What's the score on Truval Golden Pima?

Only \$4 for a Golden Pima shirt—and yet it's tailored of SuPima—a broadcloth whiter than white, silkier than silk. Lavishly styled in medium spread and snap tab collars. Fashion and value meet in Truval Shirts. See them at Saks 34th, New York and branches and other fine stores everywhere:

350 FIFTH AVENUE, NEW YORK 1  
**Truval**  
**shirts**

## Giant Statistics

### FIVE-GAME TEAM RECORD

GIANTS	OPPONENT
89 Total first downs .....	90
28 First downs, rushing .....	47
50 First downs, passing .....	37
11 First downs, penalty .....	6
1,557 Yards gained (net) .....	1,488
581 Yards gained rushing (net) .....	774
1,121 Yards gained, passing .....	840
145 Yards lost passing .....	126
141 Passes attempted .....	122
75 Passes completed .....	68
6 Passes had intercepted .....	9
9 Passes intercepted by .....	6
94 Yards returned interceptions .....	36
23 Punts .....	26
44.5 Average yards per punt .....	39.4
16 No. of punts returned .....	13
7 No. of fair catches .....	5
208 Yards of punt returns .....	123
20 Kickoffs returned .....	18
430 Yards kickoffs returned .....	507
21 Penalties (number) .....	30
206 Yards penalized .....	302
8 Number of fumbles .....	7
3 Own fumbles recovered .....	6
16 Total touchdowns .....	17
6 Touchdowns running .....	7
10 Touchdowns passing .....	10
7 Field goals attempted .....	4
4 Field goals made .....	1

### INDIVIDUAL STATISTICS

#### SCORING

	TD-R	TD-P	TDs	PAT	FG	Pts.
Chandler .....	0	0	0	14-15	4	26
Walton .....	0	4	4	0	0	24
Morrison .....	2	1	3	0	0	18
King .....	0	2	2	0	0	12
Shofner .....	0	2	2	0	0	12
Webster .....	2	0	2	0	0	12
Lynch .....	1	0	1	0	0	6
McElhenny .....	0	1	1	0	0	6
Title .....	1	0	1	0	0	6

#### PASSING

	Atts.	Comp.	Yds.	L.	TDs	Int.	Pct.
Title .....	113	67	930	46	10	1	59.3
Guglielmi .....	17	5	89	32	0	3	29.4
Griffing .....	11	3	102	64	0	2	27.3

#### RUSHING

	Atts.	Yds.	LG	Avg.
Morrison .....	42	243	70	5.8
King .....	50	169	17	3.4
Webster .....	22	67	12	3.0
McEl'ny .....	15	60	23	4.0
Title .....	6	31	11	5.2
Gifford .....	1	12	12	12.0
Guglielmi .....	3	3	2	1.0
Chandler .....	1	0	0	0.0
Anderson .....	1	-2	-2	—
Griffing .....	1	-2	-2	—

#### RECEIVING

	No.	Yds.	LG	TDs
Shofner .....	20	341	44	2
Gifford .....	13	236	64	0
King .....	13	218	46	2
Walton .....	11	185	43	4
Morrison .....	11	80	28	1
McEl'ny .....	4	20	19	1
Webster .....	2	26	16	0
Thomas .....	1	15	15	0

#### PUNT RETURNS

	No.	Yds.	LR
Dove .....	4	95	83
Webb .....	3	45	23
McElhenny .....	6	46	13
Pesonen .....	3	22	9

#### INTERCEPTION

	No.	Yds.	LR	TDs
Lynch .....	4	70	47	1
Huff .....	2	2	2	0
Webb .....	1	21	21	0
Pesonen .....	1	1	1	0
Patton .....	1	0	0	0

#### KICKOFF RETURNS

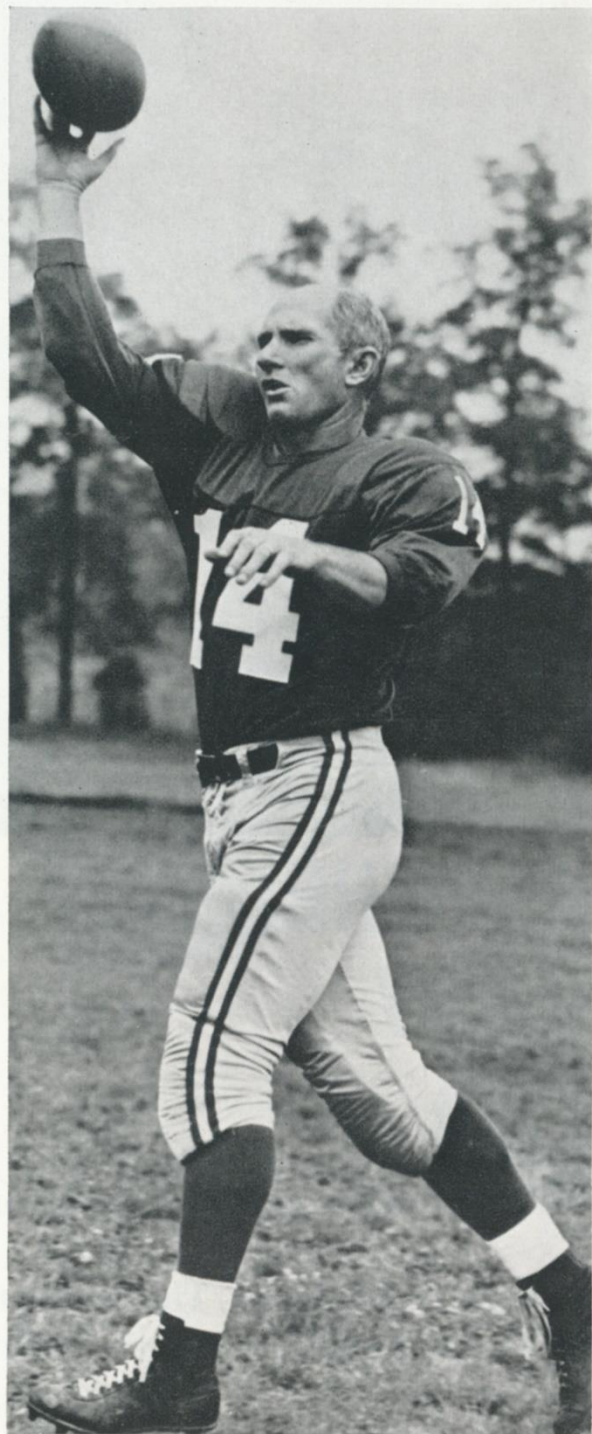
	No.	Yds.	LR
Pesonen .....	7	169	30
Morrison .....	1	23	23
Webb .....	3	62	24
Killett .....	8	164	28
Dove .....	1	12	12

#### PUNTING

	No.	Avg.	LG
Chandler .....	23	44.5	64



## Record for Y. A.



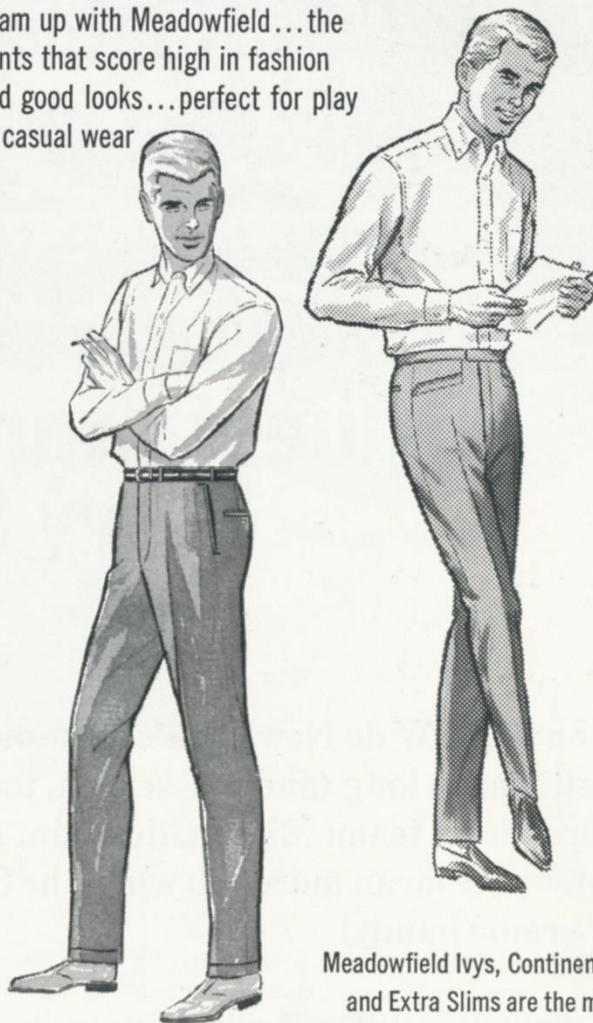
Y. A. TITTLE

**Y. A. TITTLE**, the pass-master of the Giants has added another major record to his collection. By connecting with 17 of 31 passes against the Cleveland Browns last Sunday, Y. A. increased his career total of completions to 1817. That tops by three the listed N. L. record held by Bobby Layne. Last year, Tittle set a league mark by passing for 33 touchdowns in the season. And he's got a bead on several more career standards, such as most touchdown passes, most passing yardage and most passes thrown.

## THE ALL-TIME PRO IN CASUAL WEAR

**MEADOWFIELD**  
*Sportswear*  
by **SWEET-ORR**

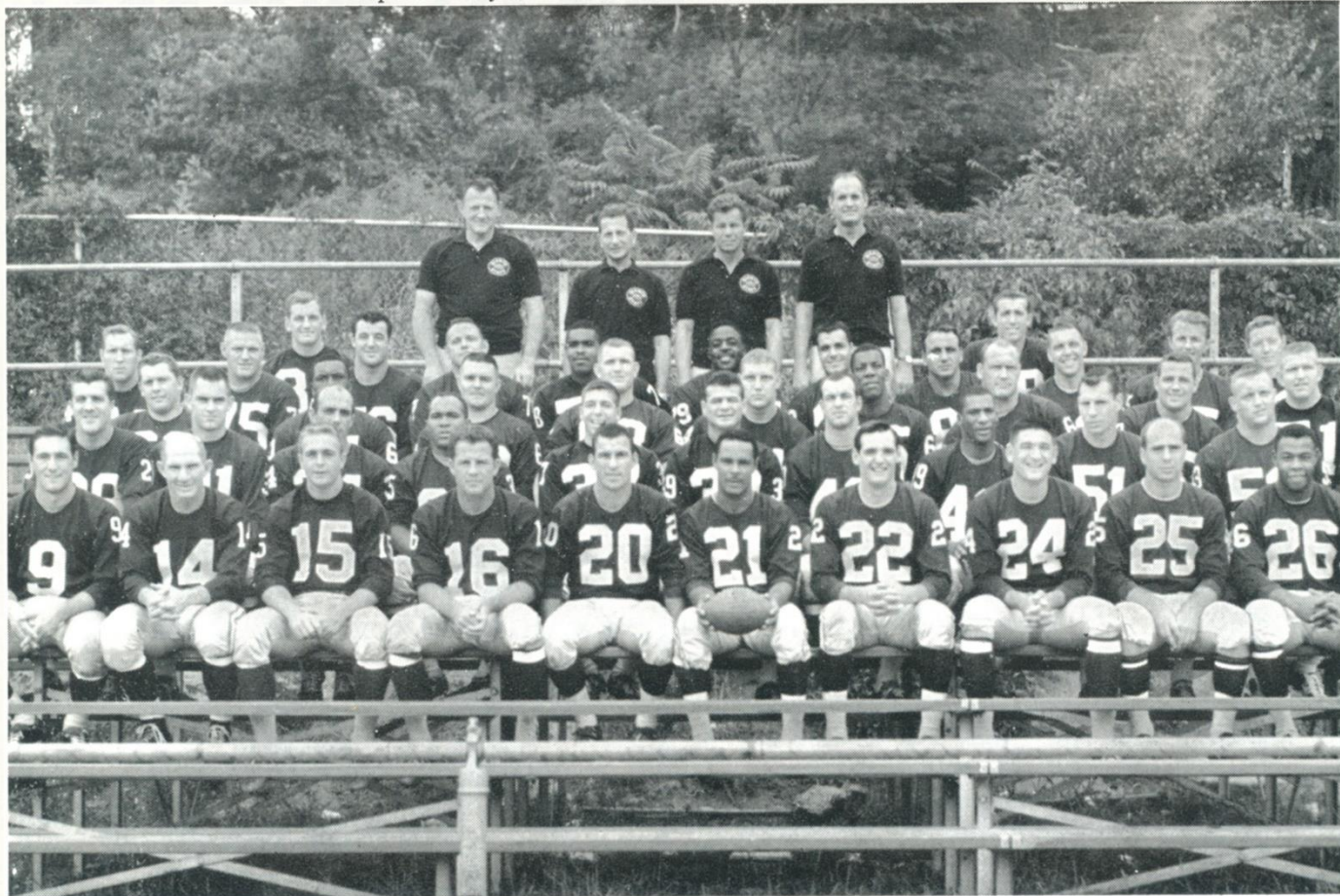
Team up with Meadowfield...the pants that score high in fashion and good looks...perfect for play or casual wear



Meadowfield Ivys, Continentals and Extra Slims are the most versatile pants...superbly styled and detailed...the newest fashions for the wardrobes of men of all ages. Handsomely tailored, proportioned to fit, cut for comfort-in-action. They come in today's most-wanted colors and materials. You'll outrun the field for quality and good looks when you buy Meadowfield pants.

**Meadowfield pants, available at fine stores everywhere.**





## Guest Stars On WNEW— Every Sunday

Only on WNEW do New York's fabulous Football Giants come alive *every* Sunday, all season long (and pre-season, too).

Our broadcast team: Marty Glickman, Al DeRogatis, Joe Hasel. They make the play-by-play mean more—so when the Giants are on the field, *wherever* you are keep a radio handy!

Before every game: **“Pro Football Preview”**—predictions, analysis, interviews by two great pros, Kyle Rote and Al DeRogatis thirty minutes before every kickoff.

After every game: **Kyle Rote’s “Locker Room Report”**—Kyle and “DeRo” discuss how it happened, and why, with the players who made it happen (direct from Giants’ dressing room).

New York’s Giant Station

# WNEW RADIO

1130Kc/102.7FM/Metropolitan Broadcasting Radio/Div. of Metromedia





KEN BYERS



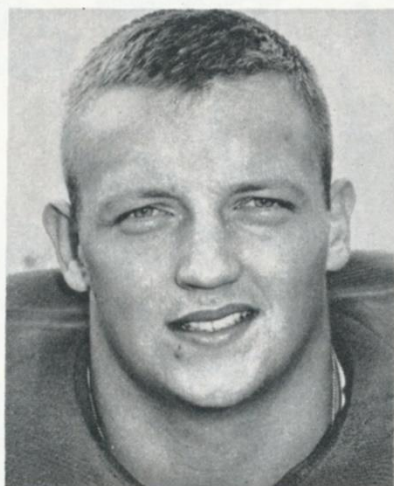
ROOSEVELT BROWN



MICKEY WALKER



JACK STROUD



GREG LARSON



DARRELL DESS

G  
I  
A  
N  
T

**P**RO offensive linemen carry the heavy burden of having to rout out king-sized defensive linemen on running plays and shield their quarterback from enemy assault on passing plays. It takes size, speed, agility and a lot of know-how to discharge these duties effectively. The Giants' offensive line is anchored at the tackles by two great old pros—trigger-quick Roosevelt Brown on the left side and deep-chested Jack Stroud on the right. Between them are Darrell Dess, who in the last two seasons has developed into one of the league's best left guards; Greg Larson, a rising youngster who was shifted to center this season with the departure of Ray Wietecha, and Ken Byers, a sophomore pro who has settled down at right guard after playing a little bit of everything as a rookie. Available for fill-in duty are a couple of other upcoming young players—Bookie Bolin and Mickey Walker.

L  
I  
N  
E  
M  
E  
N



# Scores... Success... and Schenley



# Schenley

RESERVE

*...the life of your party!*

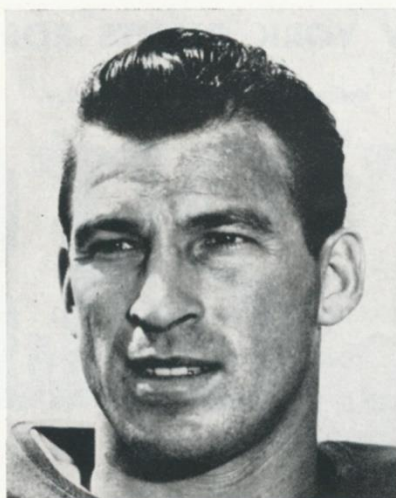


Schenley has the happy flavor that scores every time!  
Serve Sociable Schenley — and put life in your party!





ERICH BARNES



JIM PATTON



DICK PESONEN



G  
I  
A  
N  
T



DICK LYNCH



ALLAN WEBB

D  
E  
E  
P  
B  
A  
C  
K  
S

**D**EFENSE, the coaches will tell you, is the sine qua non of success in pro football. Reliable defensive performance is particularly important in the back line of the secondary, where there is no margin for error and where any mistake almost has to be fatal. On the corners and in the safety slots, the Giants have men who commit a minimum of errors. Erich Barnes, on the left corner, and Dick Lynch, on the right, are vigilant, far-ranging pass defenders with the speed and savvy to keep pace with the most artful dodgers of the flanker set. At safety, player coach Jimmy Patton, on the right side, has been the league's best at that position for his nine years as a Giant and Allan Webb, on the left, has learned fast since breaking in as a regular last year. Supporting this starting quartet are two seasoned pros, Dick Pesonen and Eddie Dove, both fast and knowing, too. Individually and as a unit, the Giant deep defenders leave little to be desired.



# NEW YORK GIANTS ROSTER

No.	Player	Position	Weight	Height	Age	College	Yrs. Pro.
41	Anderson, Bob	OHB	215	6-2	25	Army	R
49	Barnes Erich	DHB	198	6-3	28	Purdue	6
63	Bolin, Bookie	G	240	6-2	23	Mississippi	2
79	Brown, Roosevelt	OT	255	6-3	31	Morgan State	10
60	Byers, Ken	G-DE	240	6-1	23	Cincinnati	2
34	Chandler, Don	OHB	210	6-2	29	Florida	8
62	Dess, Darrell	G	245	6-0	28	No. Carolina State	6
48	Dove, Ed	DHB	184	6-1	26	Colorado	5
16	Gifford, Frank	OHB	190	6-1	33	Southern California	11
15	Griffing, Glynn	QB	200	6-1	21	Mississippi	R
87	Hillebrand, Jerry	LB	240	6-3	23	Colorado	R
78	Howell, Lane	DT-OT	255	6-4	22	Grambling	R
70	Huff, Sam	LB	230	6-1	29	West Virginia	8
75	Katcavage, Jim	DE	240	6-3	29	Dayton	8
37	Killett, Charlie	OHB	205	6-1	22	Memphis State	R
24	King, Phil	OHB	218	6-4	27	Vanderbilt	6
71	Kirouac, Lou	DE	240	6-3	23	Boston College	R
53	Larson, Greg	C	250	6-3	24	Minnesota	3
76	LoVetere, John	DT	285	6-4	27	Compton College	5
22	Lynch, Dick	DHB	198	6-1	27	Notre Dame	6
39	McElhenny, Hugh	OHB	190	6-1	34	Washington	12
77	Modzelewski, Dick	DT	260	6-0	32	Maryland	11
40	Morrison, Joe	O-DHB	212	6-1	26	Cincinnati	5
20	Patton, Jim	DHB	185	5-10	30	Mississippi	9
25	Pesonen, Dick	DHB	190	5-11	25	Minnesota (Duluth)	4
81	Robustelli, Andy	DE	235	6-1	36	Arnold College	13
82	Scott, Tom	LB	220	6-2	33	Virginia	11
85	Shofner, Del	OE	185	6-3	28	Baylor	7
66	Stroud, Jack	G	250	6-1	35	Tennessee	11
65	Taylor, Bob	DE	240	6-3	23	Maryland State	R
88	Thomas, Aaron	OE	210	6-3	25	Oregon State	3
14	Tittle, Y. A.	QB	195	6-0	36	L. S. U.	14
64	Walker, Mickey	LB-C	235	6-0	24	Michigan State	3
80	Walton, Joe	OE	200	6-0	27	Pittsburgh	7
21	Webb, Allan	DHB	180	5-11	29	Arnold College	3
29	Webster, Alex	FB	220	6-3	32	No. Carolina State	9
31	Winter, Bill	LB	220	6-3	23	St. Olaf	2

HEAD COACH — Al Sherman

ASSISTANT COACHES — Ed Kolman, Ken Kavanaugh, Kyle Rote, Andy Robustelli, Jimmy Patton, Emlen Tunnell, Ken Strong.

TRAINERS — John Johnson, Sid Moret, John Dziegiel.



# SCORES BIG...

*with the  
quick opener*



The aluminum top with  
the built-in opener...  
another new idea from Alcoa

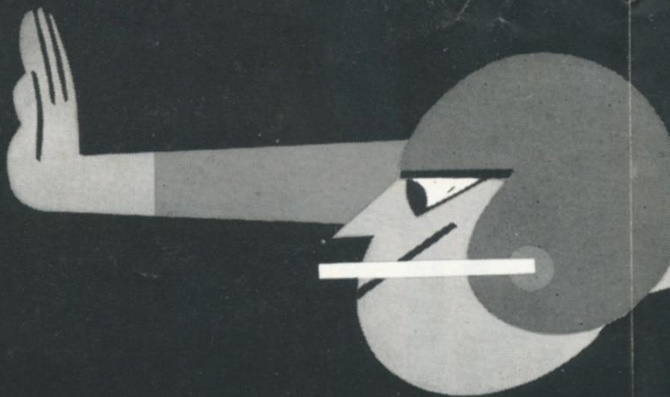
Beer in cans is great . . . and here's the  
greatest—the can top with a built-in opener.  
Lift the tab . . . roll it off . . . it's open!  
The top is made of Alcoa® Aluminum—  
light, strong, friendly to flavor. Most popular  
brands now open this easily. This great top  
is one of the many new packaging ideas  
for food, beverages and other products  
coming to you these days from Alcoa.

*What next from Alcoa!*





# 'TOP BRASS' FIGHTS DANDRUFF!



## Giants on Offense

Punter—CHANDLER (34)

Kicker—CHANDLER (34)

2:05 P  
KICK-C

<b>FL</b>		<b>RB</b>		<b>RB</b>		<b>QB</b>	
16—GIFFORD		29—WEBSTER		24—KING		14—TITTLE	
88—THOMAS		40—MORRISON		39—McELHENNY		15—GRIFFING	
		41—ANDERSON		37—KILLETT			
<b>TE</b>		<b>RT</b>		<b>RG</b>		<b>LT</b>	
80—WALTON		66—STROUD		60—BYERS		79—BROWN	
88—THOMAS		78—HOWELL		63—BOLIN		71—KIROUAC	
				53—LARSON		85—SHOFNER	
				64—WALKER		40—MORRISON	
				62—DESS			
				64—WALKER			
<b>LE</b>		<b>LT</b>		<b>RT</b>		<b>RE</b>	
		74—LILLY		78—MEYERS		66—ANDRIE	
		79—STEPHENS				79—STEPHENS	
<b>LLB</b>		<b>MLB</b>		<b>RLB</b>			
54—HOWLEY		50—TUBBS		55—JORDAN			
52—EDWARDS		56—HAYS		56—HAYS			
<b>LC</b>		<b>LS</b>		<b>RS</b>		<b>RC</b>	
34—GREEN		42—RIDLON		41—LIVINGSTON		44—BISHOP	
27—GAECHTER		20—OVERTON		27—GAECHTER		41—LIVINGSTON	

## Cowboys on Defense

### GIANTS BY NUMBERS

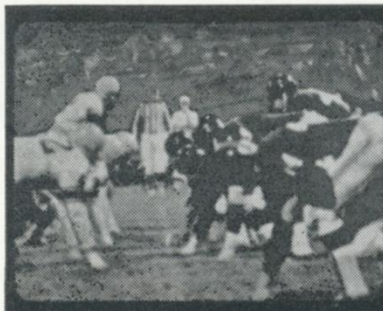
No.	Name	Pos.	No.	Name	Pos.	No.	Name	Pos.	No.	Name	Pos.
14	Tittle, Y. A.	QB	34	Chandler, Don	OHB	62	Dess, Darrell	G	77	Modzelewski, Dick	DT
15	Griffing, Glynn	QB	37	Killett, Charles	OHB	63	Bolin, Bookie	G	78	Howell, Lane	DT-OT
16	Gifford, Frank	OHB-E	39	McElhenny, Hugh	OHB	64	Walker, Mickey	LB	79	Brown, Roosevelt	OT
20	Patton, Jim	DHB	40	Morrison, Joe	O-DHB	65	Taylor, Bob	DE	80	Walton, Joe	OE
21	Webb, Allan	DHB	41	Anderson, Bob	OHB	66	Stroud, Jack	OT	81	Robustelli, Andy	DE
22	Lynch, Dick	DHB	48	Dove, Ed	DHB	70	Huff, Sam	LB	82	Scott, Tom	LB
24	King, Phil	OHB	49	Barnes, Erich	DHB	71	Kirouac, Lou	DE	85	Shofner, Del	OE
25	Pesonen, Dick	DHB	53	Larson, Greg	C-G	75	Katcavage, Jim	DE	87	Hillebrand, Jerry	LB
29	Webster, Alex	FB	60	Byers, Ken	DE	76	LoVetere, John	DT	88	Thomas, Aaron	OE
31	Winter, Bill	LB									

Referee  
Bernard Ulm  
Umpire  
Joseph L. Conn  
Linesman  
Samuel E. Cooper  
Field Judge  
Michael Lister  
Back Judge  
Frank Luzar

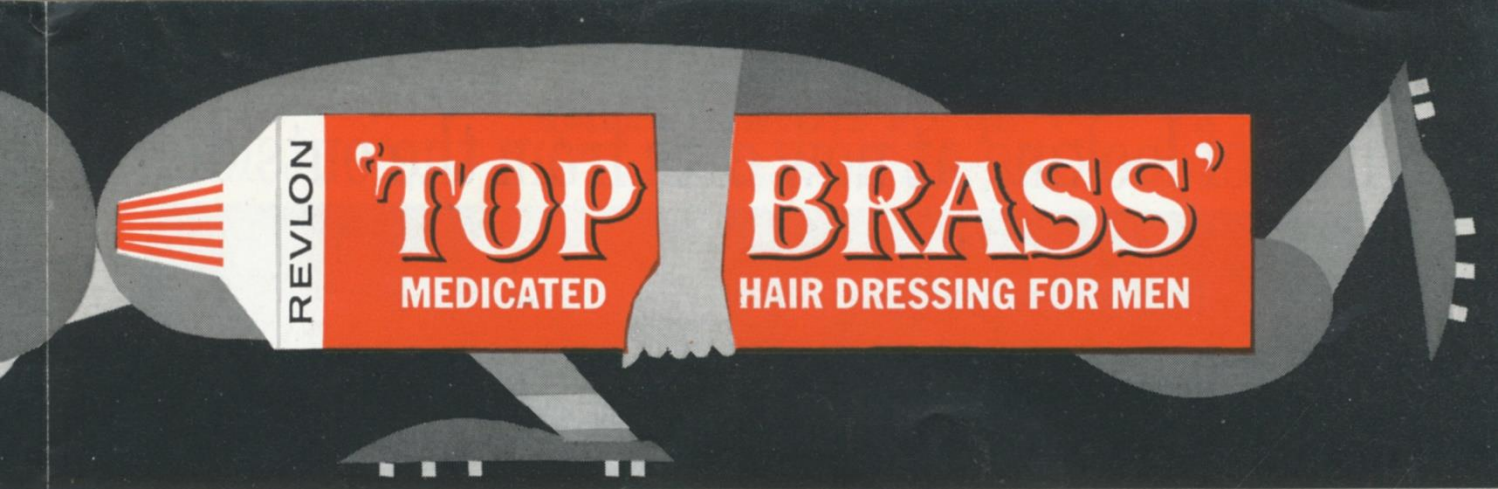
Complete Giant Roster on Page 22

# Refresh...Have a Coke

TRADE-MARK ®







5 P.M.  
CK-OFF

Punter—BAKER (38) Kicker—BAKER (38)

### Cowboys on Offense

FL		RB		RB		QB	
82—CLARKE		31—MARSH		22—BULLOCKS		17—MEREDITH	
80—BARNES		40—STIGER		43—PERKINS		14—LeBARON	
						11—GIBBS	
TE		RT		RG		C	
83—FOLKINS		76—NUTTING		69—ISBELL		53—CONNELLY	
84—NORMAN		65—SCHOENKE		70—MEMMELAAR		51—HOYEM	
LG		LT		LE		LE	
64—SMITH		75—FRY		81—HOWTON		84—NORMAN	
51—HOYEM		76—NUTTING					
LE		LT		RT		RE	
5—KATCAVAGE		77—MODZELEWSKI		76—LoVETERE		81—ROBUSTELLI	
71—KIROUAC		78—HOWELL		78—HOWELL		65—TAYLOR	
LLB		MLB		RLB		RLB	
31—WINTER		70—HUFF		82—SCOTT		87—HILLEBRAND	
87—HILLEBRAND		64—WALKER					
LC		LS		RS		RC	
49—BARNES		21—WEBB		20—PATTON		22—LYNCH	
25—PESONEN		48—DOVE		48—DOVE		25—PESONEN	

### Giants on Defense

#### COWBOYS BY NUMBERS

Referee	No.	Name	Pos.	No.	Name	Pos.	No.	Name	Pos.	No.	Name	Pos.
Hard Ulman (6)	11	Gibbs, Guy	QB	41	Livingston, Warren	DHB	55	Jordan, Lee Roy	LB	75	Fry, Bob	OT
Umpire	14	LeBaron, Eddie	QB	42	Ridlon, Jim	DHB	56	Hays, Harold	LB	76	Nutting, Ed	OT
L. Connell (57)	17	Meredith, Don	QB	43	Perkins, Don	OHB	60	Isabell, Joe Bob	G	78	Meyers, John	DT
Linesman	20	Overton, Jerry	DHB	44	Bishop, Don	RHB	64	Smith, Jim Ray	G	79	Stephens, Larry	DE
E. Cooperman (45)	22	Bullocks, Amos	OHB	50	Tubbs, Jerry	LB	65	Schoenke, Ray	OT	80	Barnes, Gary	OE
Field Judge	27	Gaechter, Mike	DHB	51	Hoyem, Lynn	C-G	66	Andrie, George	DE	81	Howton, Billy	OE
Michael Listeski (16)	31	Marsh, Amos	FB	52	Edwards, Dave	LB	68	Reese, Guy	DT	82	Clarke, Frank	OHB
Back Judge	34	Green, Cornell	DHB	53	Connelly, Mike	C	70	Memmlaar, Dale	G	83	Folkins, Lee	OE
Bank Luzar (14)	38	Baker, Sam	K	54	Howley, Chuck	LB	74	Lilly, Bob	DE	84	Norman, Pettis	OE
	40	Stiger, James	OHB									

Complete Cowboys Roster on Page 27

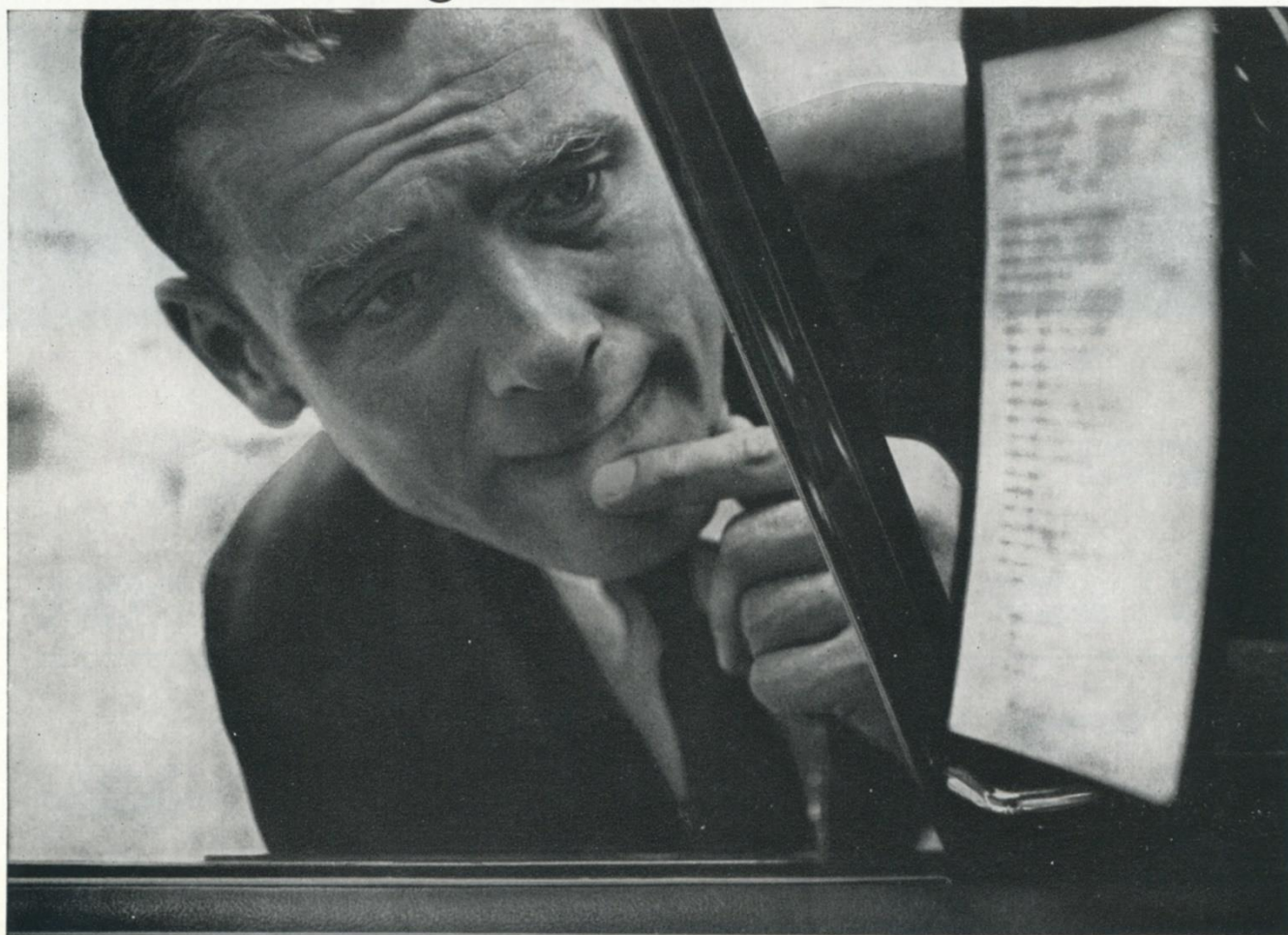


... enjoy the game more





# Tired of looking at new cars from the outside?



## Then reach for this Helping Hand.



Our loan specialists at Chemical New York can work out the best auto loan for you and present you with a check in a matter of hours. And you can spread your small payments over 36 months.

Your low-cost loan includes life insurance on the unpaid balance. Call on the Helping Hand at any of our 111 convenient offices. Chemical Bank New York Trust Company. *Member F. D. I. C.*



## DALLAS COWBOYS ROSTER

No.	Player	Position	Weight	Height	Age	College	Yrs. Pro.
66	Andrie, George .....	DE	264	6-7	23	Marquette	2
38	Baker, Sam .....	K	220	6-2	32	Oregon State	9
80	Barnes, Gary .....	OE	210	6-4	23	Clemson	2
44	Bishop, Don .....	DHB	215	6-1	29	Los Angeles C. C.	5
22	Bullocks, Amos .....	OHB	202	6-1	24	So. Illinois	2
82	Clarke, Frank .....	OHB	215	6-1	29	Colorado	7
53	Connelly, Mike .....	C	242	6-3	27	Utah State	4
52	Edwards, Dave .....	LB	213	6-2	24	Auburn	R
83	Folkins, Lee .....	OE	220	6-5	24	Washington	3
75	Fry, Bob .....	OT	238	6-4	32	Kentucky	9
27	Gaechter, Mike .....	DHB	196	6-0	23	Oregon	2
11	Gibbs, Guy .....	QB	235	6-7	22	T. C. U.	R
34	Green, Cornell .....	DHB	220	6-4	23	Utah State	2
56	Hays, Harold .....	LB	235	6-3	22	Southern Miss.	R
54	Howley, Chuck .....	LB	223	6-3	27	West Virginia	5
81	Howton, Billy .....	OE	194	6-2	33	Rice	11
51	Hoyem, Lynn .....	C-G	253	6-4	23	Long Beach C. C.	2
60	Isbell, Joe Bob .....	G	250	6-1	23	Houston	2
55	Jordan, Lee Roy .....	LB	215	6-2	22	Alabama	R
14	LeBaron, Eddie .....	QB	169	5-7	33	U. O. P.	11
74	Lilly, Bob .....	DE	251	6-4	24	T. C. U.	3
41	Livingston, Warren .....	DHB	185	5-10	25	Arizona	3
84	Norman, Pettis .....	OE	218	6-3	23	J. C. Smith	2
76	Nutting, Ed .....	OT	246	6-4	24	Georgia Tech	3
31	Marsh, Amos .....	FB	225	6-1	24	Oregon State	3
70	Memmelaar, Dale .....	G	248	6-2	26	Wyoming	5
17	Meredith, Don .....	QB	205	6-2	25	S. M. U.	4
78	Meyers, John .....	DT	276	6-6	23	Washington	2
20	Overton, Jerry .....	DHB	190	6-2	22	Utah	R
43	Perkins, Don .....	OHB	196	5-10	25	New Mexico	3
68	Reese, Guy .....	DT	258	6-5	23	S. M. U.	2
42	Ridlon, Jim .....	DHB	181	6-1	28	Syracuse	7
65	Schoenke, Ray .....	OT	234	6-3	21	S. M. U.	R
64	Smith, Jim Ray .....	G	245	6-3	31	Baylor	8
79	Stephens, Larry .....	DE	260	6-4	25	Texas	4
40	Stiger, James .....	OHB	200	5-11	22	Washington	R
50	Tubbs, Jerry .....	LB	218	6-3	28	Oklahoma	7

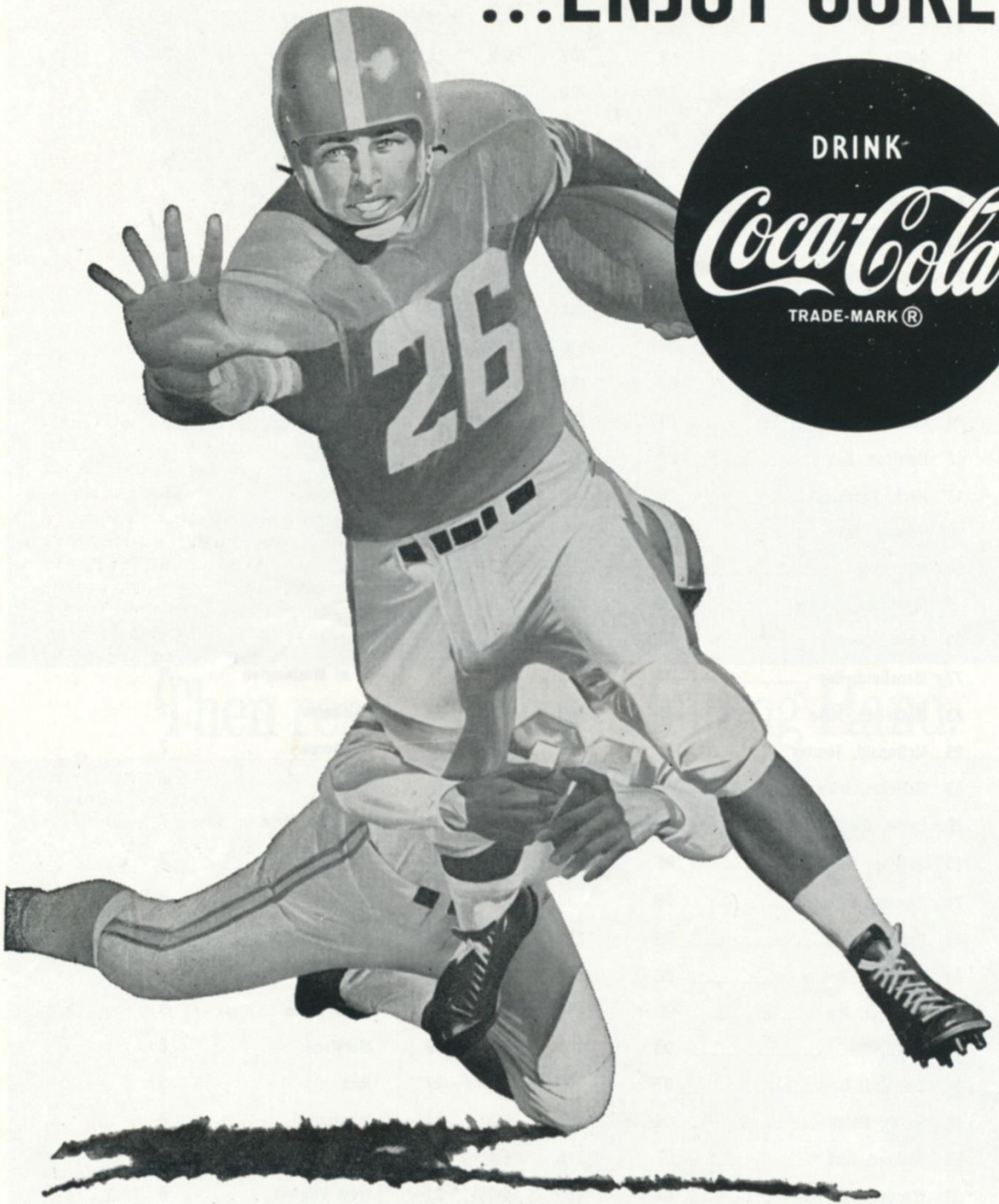
HEAD COACH — Tom Landry

ASSISTANT COACHES — Ermal Allen, Jim Myers, Brad Ecklund, Dick Nolan

TRAINER — Clint Houy



**BE REALLY REFRESHED!**  
**...ENJOY COKE!**





# The Cowboys

**P**ICKED by some experts to win the Eastern Division title and rated highly in all the pre-season polls, the Dallas Cowboys got off to a miserable start and arrived here today with only one victory. This sad state of affairs, which has old buddy Tom Landry mighty unhappy, could bode ill for the Giants. This Dallas team has too much basic merit to remain a patsy. Last Sunday's triumph over Detroit showed that.

The Cowboys are particularly formidable on attack. They pack a heavy punch both on the ground and overhead. In Don Perkins and Amos Marsh, they have two of the best running backs in the league and there's a good man behind them in Amos Bullocks. All three have smashing power plus breakaway speed.

This season, young Don Meredith has been doing the bulk of the quarterbacking. But still on hand and frequently in action is old pro Eddie LeBaron, who alternated with Meredith, play for play, last year. The Cowboys also are bringing along a third quarterback, Guy (Sonny) Gibbs. At 6 foot 7 inches and 235 pounds, Gibbs, a shining light at TCU for three seasons, is the biggest quarterback in captivity.

Nifty Billy Howton, who soon will have caught more passes and gained more yards on pass receptions than any player in NFL history, and Frank Clarke, whose 14 touchdown receptions led the league last year, head a nifty group of pass receivers that also includes Lee Folkins, Pettis Norman and Gary Barnes.

Mike Connelly, at center, anchors a developing offensive line and Sam Baker provides superior punting and placekicking.

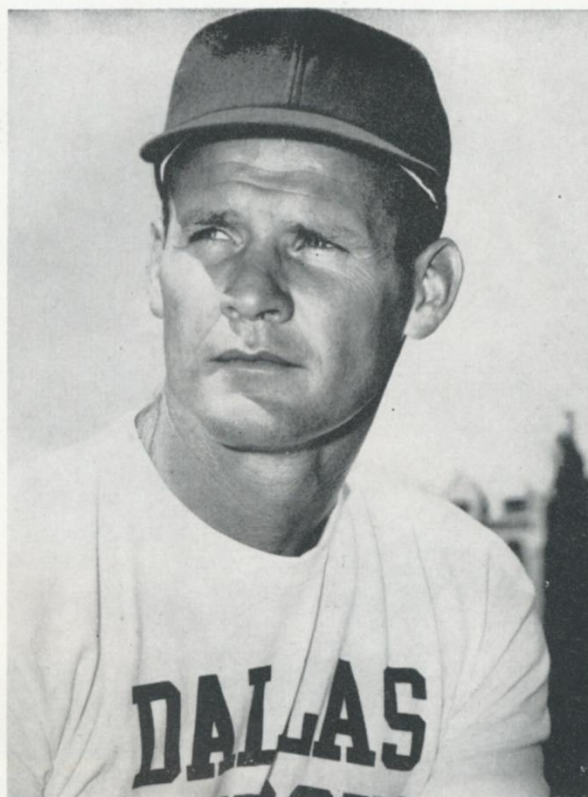
Defense has been a Dallas weakness since the Cowboys were organized in 1960 and it remains a shaky department, although Landry, a defensive genius, has made progress toward bolstering it. Tom feels definite gains have been made in the secondary and rates his deep quartet of Cornell Green, Warren Livingston, Mike Gaechter and Don Bishop highly. The addition of Lee Roy Jordan, a 1962 All-America at Alabama, Harold Hays and Dave Edwards has improved the linebacking and, up front, Bob Lilly and George Andrie are developing into blue-chip performers.

---

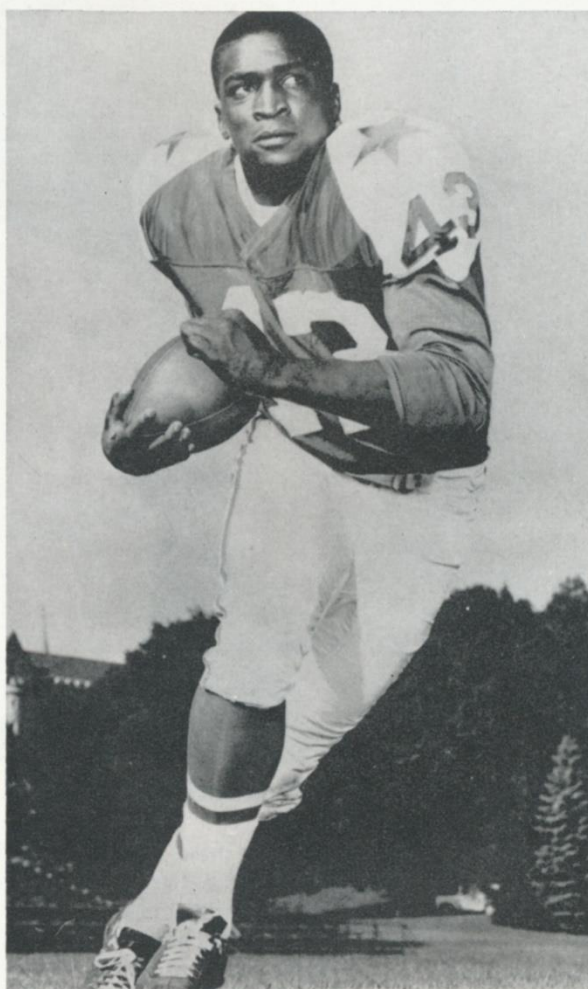
## Giant-Cowboys Series Record

1960—Giants 31, Dallas 31  
1961—Giants 31, Dallas 10  
Dallas 17, Giants 16

1962—Giants 41, Dallas 10  
Giants 41, Dallas 31

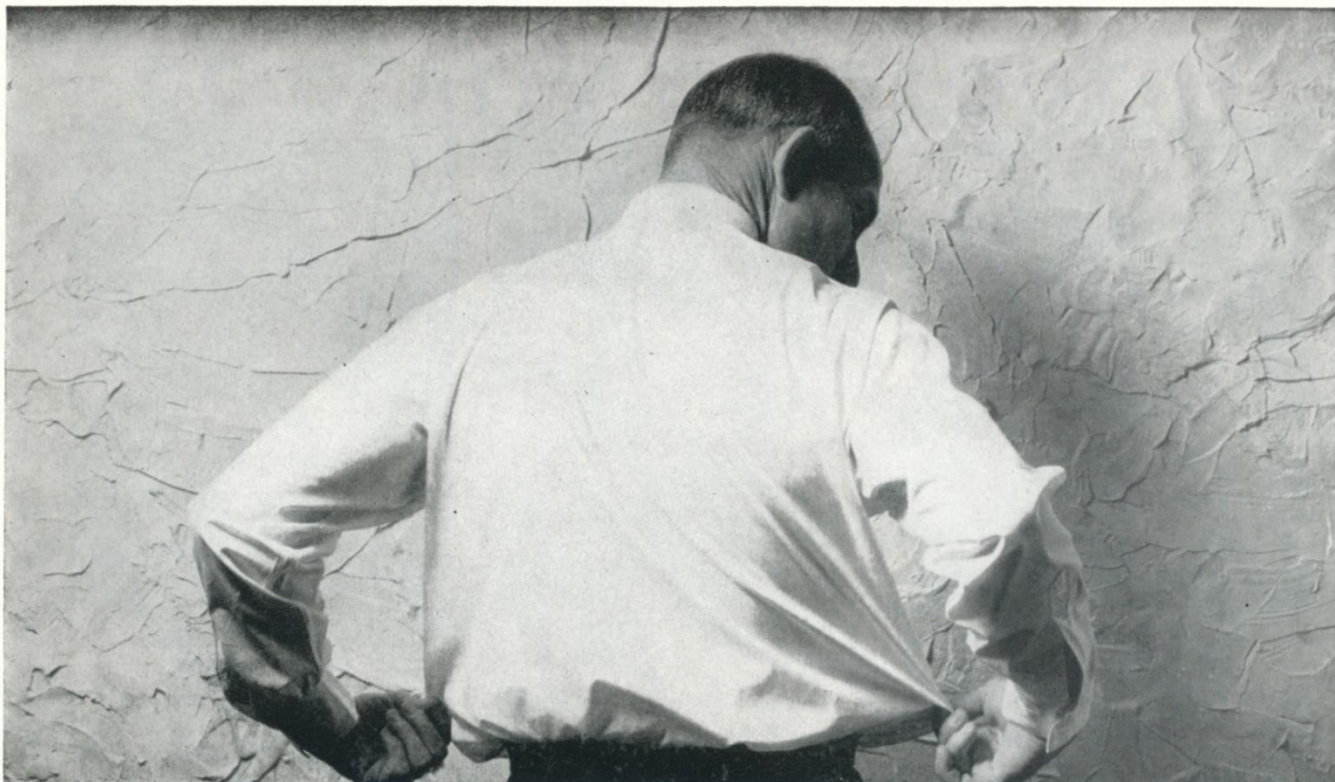


COACH TOM LANDRY

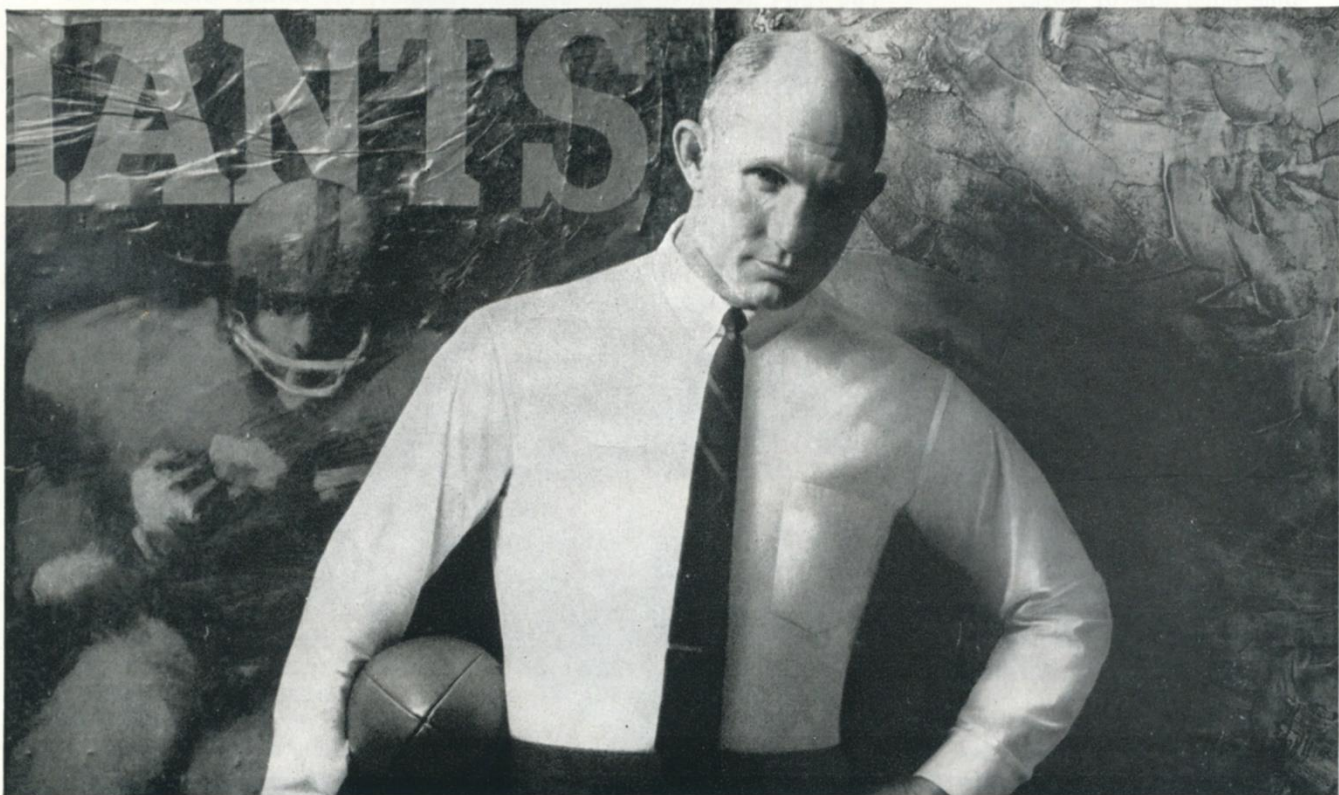


DON PERKINS





**Y. A. Tittle has switched from tent-shaped shirts**



**to the man-shaped shirt...Manhattan® Mantrim®**

Mantrim shirts are shaped to fit a man. No extra handfuls of fabric to pull out and hang over. No bulges. Neat. Comfortable. Any shaped man looks better in the man-shaped shirt because the taper is proportioned to size. Only Manhattan® gives you Mantrim contour cut in so many styles, fabrics, colors, collars. Example: **SPINSMOOTH®**, the shirt that hangs, tumbles or spins dry ready to wear—because it's tailored of 100% self-ironing Belfast® cotton. Reserve neatness keeps it wrinkle-free all day. In Grip-Tab Collar. \$5.00.

 **Manhattan**  
Internationally known mark of quality.  
And Lady Manhattan® □ 1271 Ave. of Americas, N.Y. 20





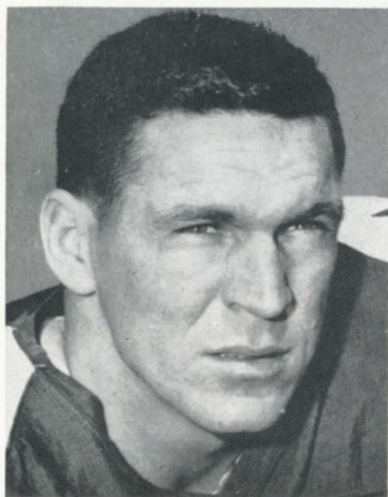
EDDIE LeBARON



FRANK CLARKE



DON MEREDITH

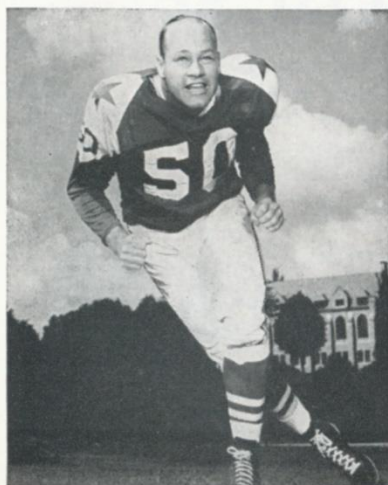


LEE ROY JORDAN

## COWBOY PLAYERS



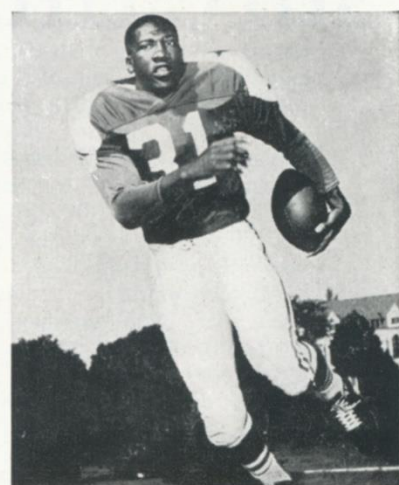
GEORGE ANDRIE



JERRY TUBBS

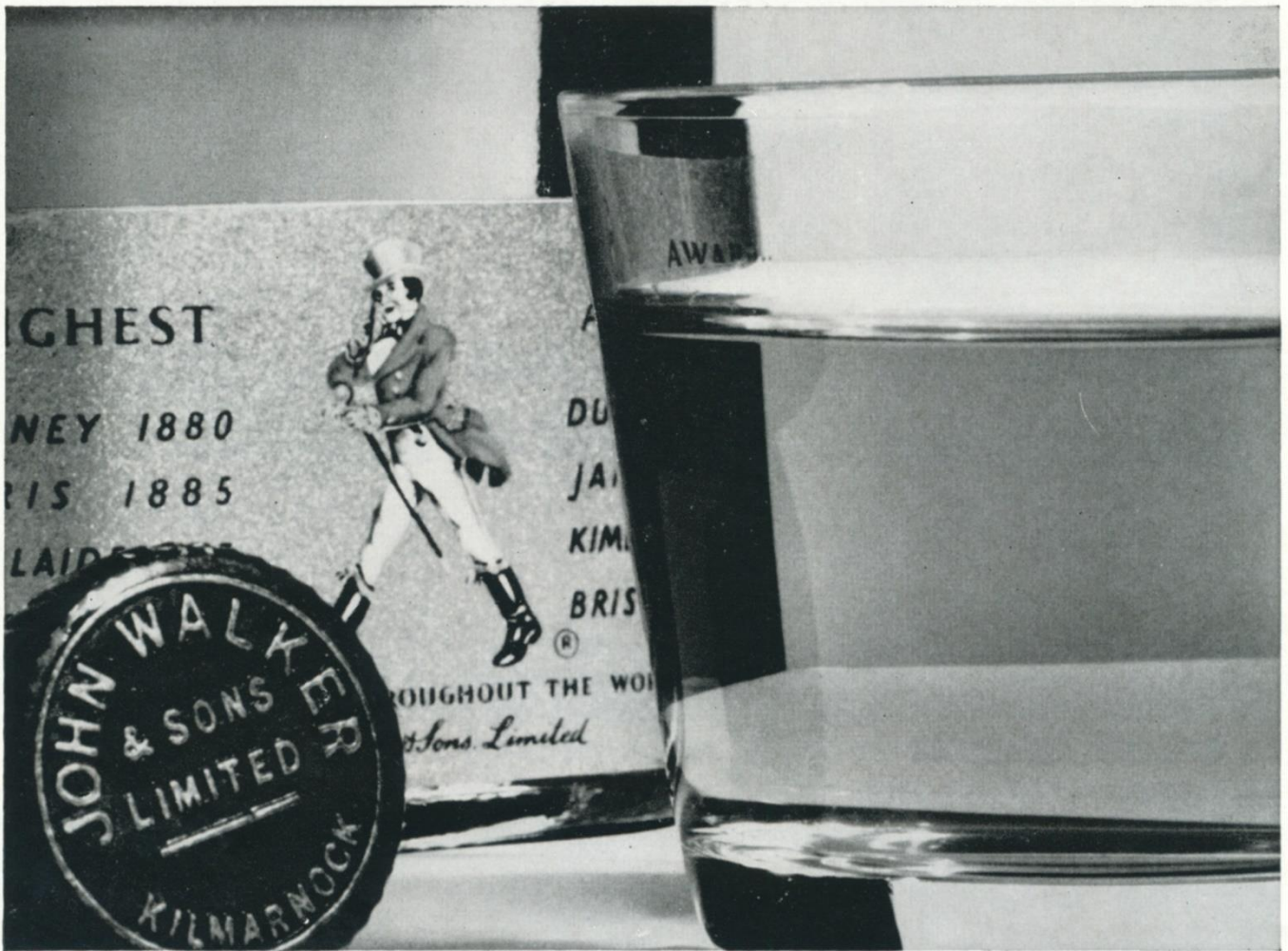


BILLY HOWTON



AMOS MARSH





Since there are 208 different Scotches...how can you be sure this is the smoothest?

Smoothness is what people want most in the Scotch they drink. So the smoothest Scotch must also be the one more people prefer. And Johnnie Walker Red is the largest-selling Scotch whisky in the entire world.

**Johnnie Walker Red**  
—just smooth, very smooth





# Sizing Up Today's Games

*The following NFL release points up the issues at stake, the potential high spots and other interesting facets of today's NFL games.*

## DALLAS AT NEW YORK

2:05 P.M. (EDT)

Cowboys, after four straight losses, finally clicked last week and beat Detroit 17-14. . . . Fullback Amos Marsh, who didn't start for the first time in his three-year career, came off the bench to gain 77 yards in 11 carries. . . . Dallas still using Don Meredith most of time at QB. . . . Giant QB Y. A. Tittle pushed lifetime completion total to 1,817, an NFL record, during Giants loss to Browns and retained league passing leadership. . . . Fullback Alex Webster saw action for NY after missing two games. . . . Cowboys also have lost to Cleveland. . . . However, NY has wins over both Philadelphia and Washington, teams that have beaten Dallas. . . . In '62, New York swept season series, 41-10 and 41-31.

## PHILADELPHIA AT CLEVELAND

2:05 P.M. (EDT)

When Browns returned home from 35-24 victory at New York last week thousands of fans met them at the airport and many thousands more will be in Cleveland Stadium in expectation of sixth straight victory. . . . But Eagles have turned hot in last two weeks; first with King Hill passing them to victory over Dallas, then last Sunday with Sonny Jurgensen throwing four TDs in 37-24 win over Washington. . . . Browns, too, have beaten Cowboys and Redskins, but whereas Cleveland beat N. Y., Eagles lost to Giants. . . . Both have also played Pittsburgh. . . . Eagles tied Steelers, Browns beat them. . . . Game matches two league leaders, the Brown boys. Cleveland's Jim leads rushers and needs only 50 yards to match Joe Perry's all-time individual yardage total. . . . Philadelphia's Tim tops the kickoff return table. . . . Eagles scored their biggest margin ever over Browns, winning 35-7 at Philadelphia last year.

## WASHINGTON AT PITTSBURGH

2:05 P.M. (EDT)

One of three Steeler home games scheduled for Pitt Stadium. . . . Redskins need victory to reach .500 and Steelers need one

to stay above it. . . . Washington defensive backfield still makeshift. Skins had to play just-activated rookie Tod Rzempoluch at safety last week in loss to Eagles. . . . Pitt's Ed Brown hit only 8 passes in narrow loss to Cards but made them good for 235 yards. . . . Steeler fullback John Henry Johnson still doubtful this week. . . . Washington has gone seven straight against Pittsburgh without winning. . . . Both have been beaten by Cleveland. Steelers defeated N. Y. 31-0, Washington lost to Giants 24-14. . . . Steelers have tie with Philadelphia, Skins lost to Eagles.

## GREEN BAY AT ST. LOUIS

1:35 P.M. (CDT)

Sixth inter-conference game of season, and the West hasn't won one yet. . . . And it could be the most important East-West match of the year. . . . Both Cards and Packers are 4-1, and each trails its conference leader by a game. . . . You can be sure the West's unbeaten Bears and East's unbeaten Browns will be keeping an eye on this one. . . . St. Louis' league-leading offense faces the league's most opportunistic defense. . . . Packers cashed five breaks into scores in last week's narrow 37-28 victory over Minnesota. . . . St. Louis QB set team passing record of 428 yards in come-from-behind 24-23 victory over Pittsburgh, and Cards took over team passing lead in NFL. . . . Cards' Joe Childress and Packers' Jim Taylor rank 2-3 in individual league rushing.

## CHICAGO AT SAN FRANCISCO

1:36 P.M. (PDT)

How good are the undefeated Bears? Well, they scored 52 points last Sunday against Los Angeles and netted only 286 yards (201 passing, 85 rushing) in doing it. . . . It makes a person wonder what a 500-yard day would result in. . . . Chicago hasn't lost yet in five games, and San Francisco hasn't won yet. . . . Teams have split in each of the last four seasons. . . . Bears won 30-14 on Coast in '62, then 49ers won 34-27 in Chicago. . . . Chicago's

Roosevelt Taylor and Bennie McRae each have intercepted four passes to share first place with three others, and Chicago's Mike Ditka has caught more TD passes (7) than any other NFL receiver. 49ers used both Bobby Waters and Lamar McHan at QB in 20-3 loss to Baltimore. . . . Bears used both Billy Wade and Rudy Bukich against LA, and latter hit 8 of 9 passes for 99 yards and two TDs.

## BALTIMORE AT DETROIT

1:36 P.M. (EST)

Don Shula, who for the last three years coached Detroit's defensive backfield, returns to face his old teammates for the first time. . . . So does Colt placekicker Jim Martin, longtime Lion stand-out traded to Baltimore this year. . . . Awaiting Shula and his QB, Johnny Unitas, will be what is still the NFL's toughest pass defense. The Lions have given up only 506 yards through the air in five games but have had trouble getting their own offense going. . . . Colts beat Lions only once in three years Shula was at Detroit, and Lions swept 29-20 and 21-14 in '62. . . . Both are 2-3 so the winner comes out a .500 club. . . . Records are remarkably similar. . . . Both have lost to Chicago and Green Bay and both have beaten San Francisco (Colts did it twice). . . . Both have also lost to Eastern foe.

## MINNESOTA AT LOS ANGELES

1:35 P.M. (PDT)

The Rams used rookie Terry Baker at quarterback for part of the time in their loss to the Bears, and the Heisman Trophy winner responded with 5 completions in 7 attempts for 68 yards. . . . Baker faced Vikings in pre-season game won 27-3 by Vikings in August. . . . Minnesota came within a blocked field goal of knocking off world champion Packers last week. . . . Viking rookie receivers continue hot. . . . Paul Flatley caught four for 90 yards and a TD against Packers, and Ray Poage pulled in three for 103 yards. . . . Vikings beat Rams 38-14 on Coast last year, but Rams rebounded for 24-24 tie later in Minnesota.



Viceroy's got

the taste that's right!

not too strong...not too light...  
Viceroy's got the taste that's right!

### SMOKE ALL 7

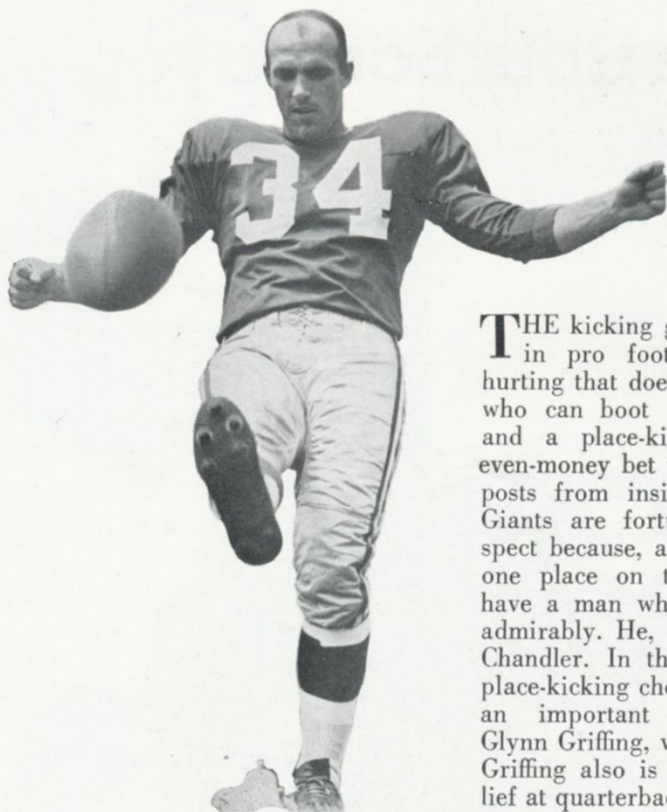
Smoke all 7 filter brands and you'll agree: some taste too strong ... others taste too light. But Viceroy — with the Deep-Weave Filter — tastes the way you'd like a filter cigarette to taste. That's right!

*Deep  
Weave  
Filter*





# GIANTS FOR KICKS



DON CHANDLER

**T**HE kicking game is important in pro football. A team is hurting that doesn't have a punter who can boot it out of trouble and a place-kicker who is an even-money bet to bisect the goal-posts from inside midfield. The Giants are fortunate in this respect because, at the cost of only one place on their roster, they have a man who does both jobs admirably. He, of course, is Don Chandler. In the practice of his place-kicking chores, Chandler has an important collaborator in Glynn Griffing, who spots the ball. Griffing also is Y. A. Tittle's relief at quarterback. You'll be hearing more of this gifted young fellow from Ole Miss.



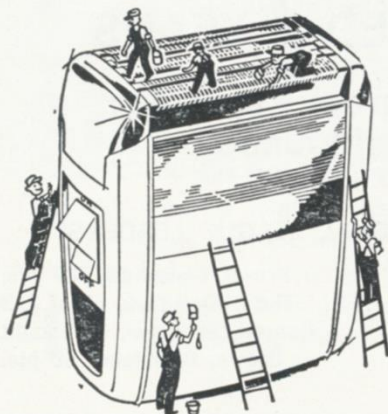
GLYNN GRIFFING



## SCHICK

the inventors of  
electric shaving

### WILL SERVICE



## Any Make ELECTRIC SHAVER

**SCHICK  
NORELCO  
REMINGTON  
RONSON  
SUNBEAM**

We're always glad to be of service to **you**—and your electric shaver.

Any problem, any make . . . when it comes to shaving, come to Schick!

**SCHICK**  
ELECTRIC SHAVER  
CENTERS

Stamford, Conn.  
298 Bedford Street

New York  
20 East 40th Street

Jamaica  
164-01A 89th Avenue

Hempstead, L. I.  
109 Jackson Street

2 Maiden Lane  
New York 38

White Plains  
156 Mamaroneck Avenue

Newark  
1183 Raymond Blvd.

Brooklyn  
101 Court Street

Bronx  
127A East Fordham Road

Grand Central Station

IF YOU CAN'T ATTEND  
THE  
GIANTS GAMES HEAR THEM  
ON WNEW AM—FM  
1130 ON YOUR DIAL  
COURTESY OF SCHICK.



*"There's nothing to life but good living"*

**Be a heads-up Bourbon buyer**



**Count the extra years of quality you get!**

***J.W. Dant*** **AGED 7 YEARS**  
**SINCE 1836** **KENTUCKY STRAIGHT BOURBON**



Luxury whisky...

at a **\$5<sup>45</sup>**  
 low price 4/5 Qt.

**NATIONAL LEAGUE LEADERS**

Rushing .....	Brown, Cleveland, 787 yds.
Passing .....	Tittle, New York, 67 of 113
Receiving .....	Conrad, St. Louis, 30 caught
Scoring .....	Brown, Cleveland, 60 pts.

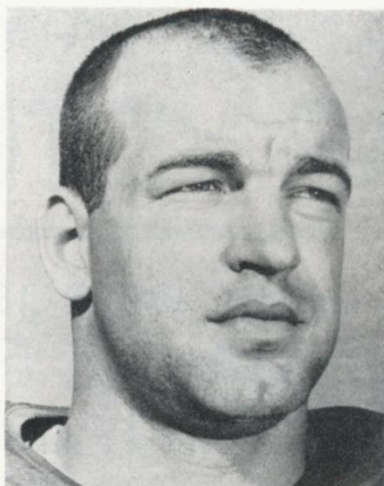
Newt Kook  
 President  
 Dant Distillery Co.

*"Live life each day-don't just pass through it"*





BOB ANDERSON



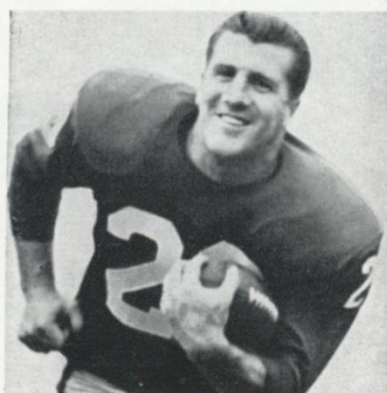
JOE MORRISON



CHARLIE KILLETT



HUGH McELHENNY



ALEX WEBSTER



PHIL KING

G  
I  
A  
N  
T

THE Giants in recent years have been air-oriented on attack, thanks to the passing virtuosity of Charlie Conerly and, more recently, Y. A. Tittle and the availability of a corps of good pass-receivers. But the Giant approach to offense, under Allie Sherman, as it was under Steve Owen and Jim Lee Howell before him, always has been to stress balance. This season, more than in the last few years, the Giants are equipped with a ground threat calculated to keep the defense honest. They are three deep at both running positions. Old pros Alex Webster, that bread-and-butter first-down maker and touchdown-scorer, and dynamic Phil King, who has come into his own this year, are backed up by the mercurial Hugh McElhenny and Joe Morrison, a model football player who does everything well. And behind the top quartet of Giant ball-carriers are two up-an-coming young pros who also have what it takes—Bob Anderson, the two-time Army All-America halfback, and Charlie Killett, a “sleeper” rookie from Memphis State. Never have the Giants been so deeply manned with capable leather-luggers.

R  
U  
N  
N  
E  
R  
S



# **9 YEAR VETERAN**

Ballantine beer brings you the  
New York Giants on Radio and  
on TV for the Ninth Great Year!



P. BALLANTINE & SONS,  
NEWARK, N. J.



## **GO·O·O·O GIANTS!**



# NFL Officials' Signals



Offside



Crawling, Pushing,  
Helping Runner



Illegal Motion



Illegal Pass



Unsportsmanlike  
Conduct



Pass Interference



Holding, Illegal  
Use of Hands



Personal Foul  
(indication of  
offense follows)



Delay of Game,  
Excess Time-Out



Touchdown, Field  
Goal, Extra Point



Safety



Loss of Down



Penalty Declined,  
Incomplete Pass,  
Missed Goal



First Down



Dead Ball



No Time-Out or  
Time In with Whistle



Time-Out



## WHITE HORSE

### THE DRY SCOTCH

100% SCOTCH WHISKIES  
BOTTLED IN SCOTLAND

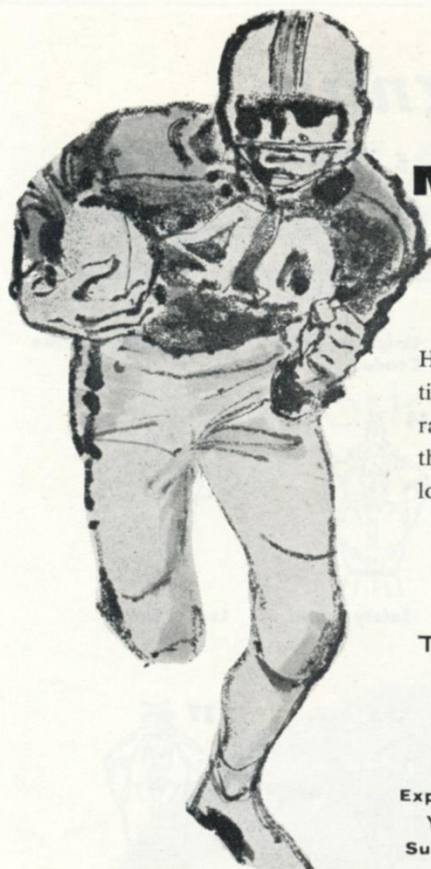


BY APPOINTMENT TO HER MAJESTY THE QUEEN  
SCOTCH WHISKY DISTILLERS  
WHITE HORSE DISTILLERS LTD., GLASGOW



BLENDED, 86.8 PROOF, SOLE DISTRIBUTORS: BROWNE-VINTNERS CO., N.Y.C.





# HOTEL MANHATTAN

HEADQUARTERS FOR  
ATHLETIC TEAMS  
IN NEW YORK CITY

Hotel Manhattan offers 1400 new air-conditioned guest rooms, each with television and radio. Known as the "Home of Champions," this magnificent sky-scraper hotel is ideally located in the heart of Times Square.

\*\*\*\*\*

*Before and after the game,  
meet your friends at*

**THE PLAYBILL RESTAURANT**

*where you'll enjoy delicious luncheons,  
cocktails, dinners and suppers.*

\*\*\*\*\*

Express Subway Trains Speed You to  
Yankee Stadium from the Private  
Subway Entrance of Hotel Manhattan

**CHARLES J. BORGES**  
Dir. Sports Activities

**ERWIN O. SCHEL**  
V.P. and Gen. Mgr.



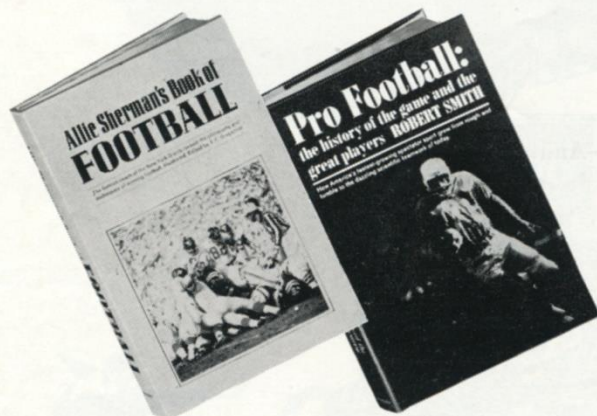
HOTEL

*Manhattan*  
44TH TO 45TH STREETS  
AT EIGHTH AVENUE • JUDSON 2-0300

## THE '63 SEASON'S TWO BIG WINNERS!

### ALLIE SHERMAN'S BOOK OF FOOTBALL

The "Coach-of-the-Year" has written the book-of-the-year for everyone who wants to follow the game with an insider's knowledge of philosophy and techniques. Coach Sherman analyzes every offensive and defensive position; evaluates the various formations used in the pro game; and outlines his favorite running and passing attacks, giving the theory and timing of each play. This is the expert's guide for every high school and college player—and must reading for anyone who follows the Giants. With over 100 diagrams and photographs; edited by J. F. Dreyspool. \$3.95



### PRO FOOTBALL: The History of the Game and the Great Players

**Robert Smith** takes the pro game from its brawling, no-helmet beginnings right up to its present lightning perfection. He relives the big games of the past 60 years, including the unforgettable Giants-Colts playoff of 1958. And he follows the careers of the all-time greats—players like Thorpe, Grange, Baugh, Graham, and Hornung and coaches like Halas, Brown, and Lombardi. This is PRO FOOTBALL—as it was and as it is today, by a top sports writer who makes the telling nearly as exciting as the game itself. With 24 pages of photographs, \$4.50.

### MONEY-BACK GUARANTEE! MAIL COUPON TODAY

To any bookstore or  
DOUBLEDAY & COMPANY, INC.  
Dept. NYG, Garden City, New York

Please send me \_\_\_\_\_ copies of ALLIE SHERMAN'S BOOK OF FOOTBALL @ \$3.95 a copy and \_\_\_\_\_ copies of PRO FOOTBALL: THE HISTORY OF THE GAME AND THE GREAT PLAYERS @ \$4.50 a copy. Enclosed is my ☐ check ☐ money order. I understand you will pay all shipping costs, and that I may return the books within 10 days for full refund if not completely satisfied.

NAME \_\_\_\_\_

ADDRESS \_\_\_\_\_

CITY \_\_\_\_\_ ZONE \_\_\_\_\_ STATE \_\_\_\_\_

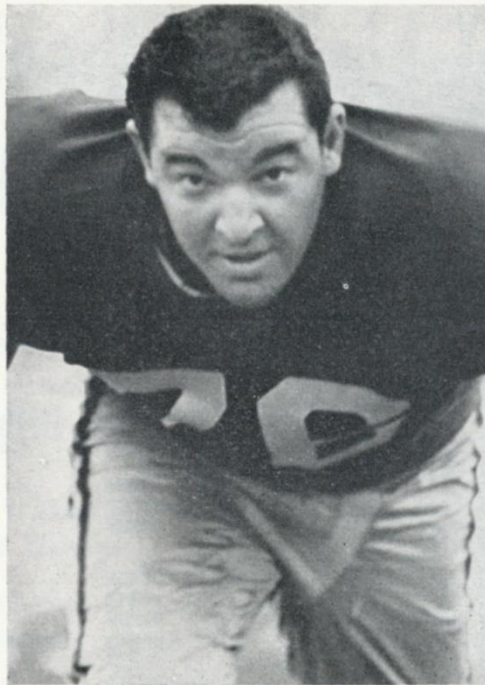


# GIANT

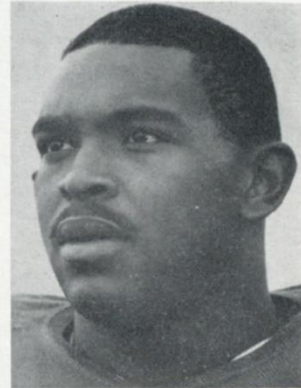
# R U S H L I N E R S



BOB TAYLOR



JOHN LoVETERE



LANE HOWELL



A STALWART defense has been the bedrock of the current era of Giant ascendancy in the National League's Eastern Conference—an era which began back in 1956. It was in that season that the great Giant rushline was formed. Three original members of the fearsome Front Four remain—Andy Robustelli, now defensive captain and a player coach; Dick (Little Mo) Modzelewski and Jim Katcavage, initially a handyman reserve. These hardy pioneer survivors of one of the gridiron's most formidable frontal firing lines have been joined this season by John LoVetere, a 285-pound passer-rushing terror who was acquired from the Los Angeles Rams in exchange for Roosevelt Grier, and Lane Howell and Bob Taylor rookies who, as spares, have exhibited the same destructive instincts as their seasoned fellow Giant frontiersmen. Big, strong, fast and knowing, these intractable Giants of the rushline relentlessly carry the fight to the foe. To them belongs much of the credit for the success the Giants have enjoyed over most of the past decade.



ANDY ROBUSTELLI



JIM KATCAVAGE



DICK MODZELEWSKI





**The beer drinker's word for the beer drinker's beer**

# Knickerbocker

---



# The Headlines Told The Story Of The 1963 Yankees

**Downing Refuels Bombers Heavy Bat Hoists Howard's HR Count**  
**With Dazzling Whiff Feats**

**TOPPING RIPS 'YANKS CRUMBLING' YARN**

**Linz Torpedoes Rivals as Yankees' Super-Sub**  
**Hollywood Couldn't Match Mickey's Merriwell Homer**

**Tresh Waves Magic Bat--**  
**Heals Yank Picket Malady**

**Lopez Wins N.Y. Hearts as Houk's Yankee-Do Boy**

**Bulldog Bouton Earns Top-Dog Rating**  
**Pepitone Kayoes Qualms--**  
**Rates Huzzahs From Houk**

**Bob and Tony Mind-Reading Midway Act**

**Slider Giving Ford Added Miles as Yank Big Wheel**

**Pepitone, Bouton Plug Gaps as Yankees Stop Challengers**

**Boyer Moves In as Bomber Blaster With Outside Belts**

**CRIPPLED YANKS MAKE RIVALS EAT DUST**

**Yogi Votes Yea for '63 Yankees as Best of His Era**

**Forecasts of Bomber Skid Exploded by Strong Bench**


**Did Yanks Do It With Mirrors? Nope--Just Gilt-Edged Defense**

**Williams, Hamilton, Bright Deals Paved Path to Pennant**

**Bombers' Rog Rams Shots Through Hole in 'Stacked Defense'**

**Yogi Berra**  
**LOP**  
**LI**  
**BLAN**  
**DEIG**

**HAPPINESS IS JUST A FINE-LETTER WORD!**



## DO YOUR CHRISTMAS SHOPPING NOW!

Looking for something different this Christmas for the sports fan on your shopping list? The Yankees have available Gift Tickets for 1964—a unique gift that can be enjoyed throughout the baseball season. You can purchase any combination of box or reserved seats for one or more games or the COMBINATION TICKET PLAN for all Sundays, nights, holidays, and the opener. Gift Tickets, which come in an attractive gift folder, are exchangeable by the recipient for game tickets for next season. Between halves today or right after the game, stop at the Stadium Ticket Office for your Yankee Gift Tickets.

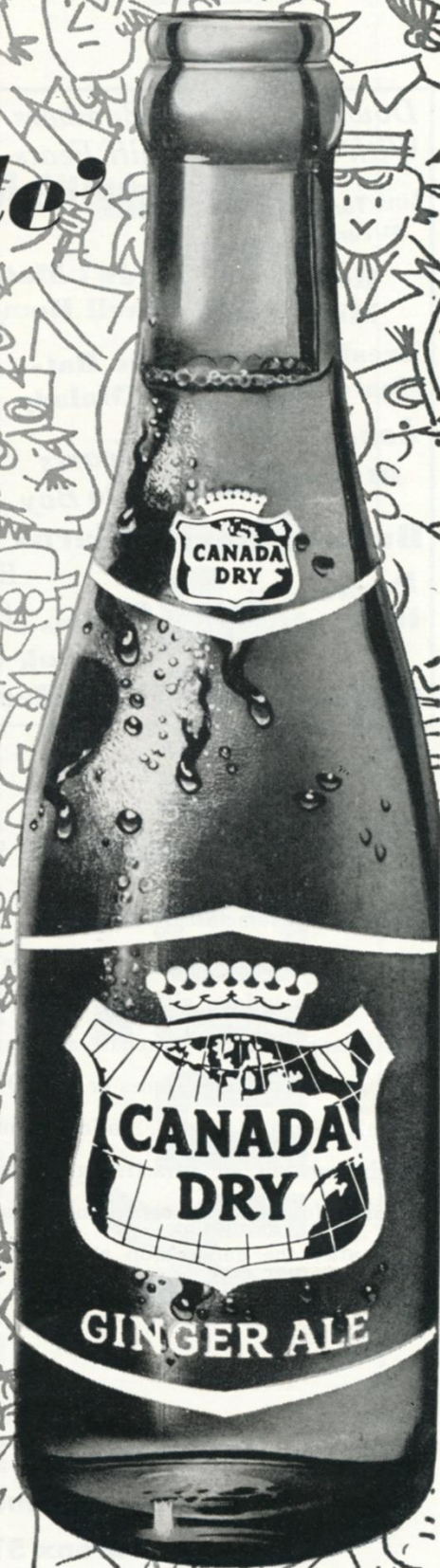
## NEW YORK YANKEES

**For further information write—Ticket Office, Yankee Stadium  
 Bronx 51, N. Y. or phone CYpress 3-6000**



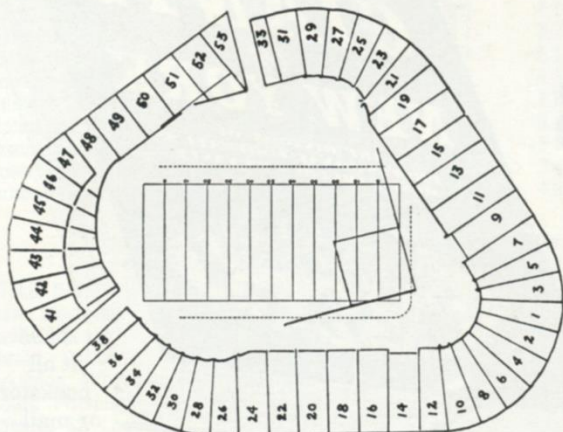
***good sports  
go for the  
'special sparkle'  
of  
Canada Dry  
Ginger Ale***

**...You'll go for its fast-paced,  
lively taste during the game  
and afterwards!**





# Yankee Stadium Services & Facilities



**LOST AND FOUND**—Direct inquiries and reports to Robert Ahern, the Stadium manager. Any attendant will direct you to his office.

**REST ROOMS—Men:** Gate 2, Press Gate, Stadium Club (lower, upper), Gate 6; Lower Sections 34, 8, 6, 15, 21, 27; Mezzanine Sections 27, 15, 5, 18, 28; Upper Sections 34, 20, 6, 15, 21; Bleacher Sections 43, 47, 52. **Women:** Gate 2, Gate 4, Stadium Club (lower, upper), Gate 6; Lower Sections 28, 20, 5, 15, 27; Mezzanine Sections 21, 15, 6, 18, 34; Upper Sections 28, 20, 5, 15, 29; Bleacher Sections 47, 52.

**PUBLIC TELEPHONES** — Gate 2, Gate 4, Press Gate, Stadium Club (lower, upper), Gate 6, Lower Sections 24, 14, 12, 11, 17, 27 Mezzanine Sections 27, 17, 7, 8, 22; Upper Sections 34, 20, 12, 8, 9, 19, 27; Bleacher Sections 41, 49, 51.

## PARKING AREAS

### YANKEE LOTS

South side 157th St., Ruppert Pl. to Cromwell Ave.  
Between Cromwell and River Aves., on 153rd St.  
163rd to 164th Sts., between River and Gerard Aves.  
151st St. and River Ave., opposite Bronx County Jail.

### PRIVATELY-OWNED LOTS

West side Ruppert Pl., between 157th and 158th Sts.  
West side River Ave., between 151st and 153rd Sts.  
West side River Ave. and 157th St.  
East side River Ave., North of 153rd St.  
East side River Ave., North of 151st St.  
East side River Ave., 164th to 165th Sts.  
East side River Ave., South of 162nd St.  
Farmer's Square—Cromwell Ave., Roadway, and  
West of 151st St. Viaduct, opposite Bronx County Jail.  
East 168th St. and River Ave.

### GARAGES

Cromwell Ave. and 157th St.  
East side of River Ave., South side of 158th St.  
East side of River Ave., North side of 157th St.  
East side of River Ave., South side of 157th St.  
North side of 158th St., between River and Gerard Aves.  
East side of River Ave., corner of 168th St.

Also, the Polo Grounds lot again will be in service for all Giant games at the Stadium.

## SOUVENIR PRICE LIST

GIANT PICTURE SETS .....	\$ .50
GIANT YEARBOOK .....	1.00
PENNANT (Large) .....	1.00
LUCKY MASCOT (Action Doll) .....	1.00
COTTON SPORT HAT .....	1.50
FOOTBALL BANK—DOLL SET .....	1.50
KNITTED HAT (Colors) .....	1.50 & 2.00
GIANT SWEATSHIRTS .....	2.00 & 3.00
STADIUM CHAIR (Fits all plank seats) .....	5.00

These items also are available by mail from Harry M. Stevens, Inc., Souvenir Department, Yankee Stadium, Bronx 51, N. Y.



## Standard Athlete's Foot Protection In Nearly All NFL Locker Rooms

Professional trainers are as scientific about their job as a coach planning a play. It's up to them to keep their players 100% fit! That's why nearly all National Football League trainers use Desenex®. Infectious Athlete's Foot . . . blisters, itching and spreading irritation could mean trouble. Thanks to Desenex, no problem.

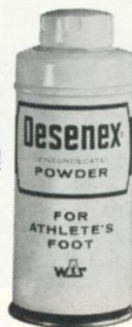
Desenex helps prevent spreading Athlete's Foot infection. Relieves its maddening itching. Promotes rapid healing. (It's the Athlete's Foot treatment most often prescribed and recommended by doctors.) Use Desenex Ointment at night, Powder during the day.

Get Desenex medicated Soap, Powder, Ointment. Solves Athlete's Foot problems for men of action!

© 1963 WTS Pharmaceuticals, Rochester 23, N.Y.



Johnny Dziegiel and Johnny Johnson, well-known Giants trainers, recommend Desenex to all their players for prevention and treatment. They find it really works!



**The Athlete's Foot Treatment  
used by nearly all  
National Football League Trainers**

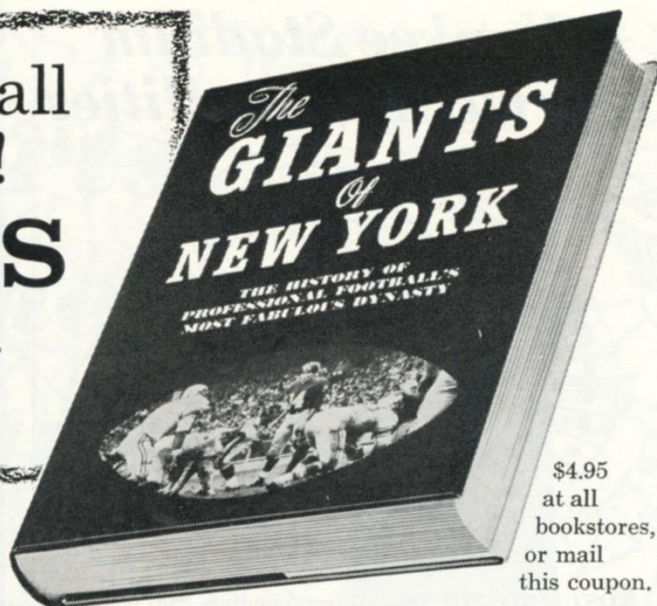


"Must" reading for all  
true Giant fans!

# THE GIANTS OF NEW YORK

By BARRY GOTTEHRER

Sports Editor of *Newsweek*



\$4.95  
at all  
bookstores,  
or mail  
this coupon.

Here's the whole exciting story of pro football's most fabulous dynasty — 39 thrill-packed years of football at its toughest and best! Filled with anecdotes about the stars. Lavishly illustrated with action shots and individual player photos. With a 10-page appendix of "All-Time Records" chalked up by the Giants.

"It is lively, colorful and exact, like the team itself."

— PETE ROZELLE,  
NFL Commissioner

"The best book yet written about the New York Giants. A touchdown all the way."

— FRANK GIFFORD

"Great reading for anyone interested in pro football. An exciting story about an exciting team." — TOOTS SHOR

"Must reading for all followers of New York Giant football." — STEVE GELMAN,  
Managing Editor, *Sport Magazine*

## MONEY-BACK GUARANTEE

GFP

G. P. PUTNAM'S SONS, 200 Madison Ave., N. Y. 10016

Enclosed is \$\_\_\_\_\_ check/money order. Please rush me, postpaid, my copy of THE GIANTS OF NEW YORK @ \$4.95. If not delighted, I may return the book within 10 days for a full refund.

Name \_\_\_\_\_

Address \_\_\_\_\_

City \_\_\_\_\_ Zone \_\_\_\_\_ State \_\_\_\_\_

(Add 20¢ sales tax for delivery in New York City)

"He tried to take my

# Drake's COOKIES"





# NFL Statistics

## LEADING RUSHERS

	Att.	Yds.	L. G.	Avg.
Brown, Cleveland	101	787	80	7.8
Childress, St. Louis	87	333	24	3.8
Taylor, Green Bay	73	328	26	4.5
Hoak, Pittsburgh	109	324	13	3.0
Brown, Philadelphia	72	307	27	4.3
Moore, Green Bay	61	299	77	4.9
Triplet, St. Louis	52	291	63	5.6
MORRISON, NEW YORK	42	243	70	5.8
Mason, Minnesota	66	231	11	3.5
Perkins, Dallas	56	227	19	4.1

## LEADING PASSERS

	Att.	Comp.	Pct.	Yds.	Tds.	Avg. Yds. Gain.
TITTLE, NEW YORK	113	67	59.3	930	10	8.23
Ryan, Cleveland	101	62	61.4	991	12	9.81
Johnson, St. Louis	146	82	56.2	1279	9	8.76
Wade, Chicago	132	76	57.6	765	9	5.80
Jurgensen, Philadelphia	90	50	55.6	853	7	9.48
Unitas, Baltimore	168	93	55.4	1115	4	6.64
Tarkenton, Minnesota	127	70	55.1	1034	6	8.14
Brown, Pittsburgh	124	59	47.6	938	6	7.56
Morrall, Detroit	63	22	34.9	499	6	7.92
Starr, Green Bay	122	62	50.8	844	8	6.92

## LEADING PASS RECEIVERS

	No.	Yds.	L.G.	Tds.
Conrad, St. Louis	30	369	29	3
Retzlaff, Philadelphia	24	417	46	1
Dial, Pittsburgh	23	434	46	3
Ditka, Chicago	23	309	36	7
Flatley, Minnesota	23	289	45	1
McDonald, Philadelphia	22	429	75	5
Matte, Baltimore	22	205	21	0
SHOFNER, NEW YORK	20	341	44	2
Mitchell, Washington	19	418	99	3
Randle, St. Louis	19	416	68	5

## LEADING SCORERS

	Tds.	PATs	FGs	Pts.
Brown, Cleveland	10	0—0	0—0	60
Michaels, Pittsburgh	0	10—12	13—19	49
Ditka, Chicago	7	0—0	0—0	42
Brown, Philadelphia	6	0—0	0—0	36
Groza, Cleveland	0	21—22	5—9	36
Kramer, Green Bay	0	16—18	6—12	34
Bakken, St. Louis	0	20—20	4—7	32
Martin, Baltimore	0	10—10	7—10	31
Cogdill, Detroit	5	0—0	0—0	30
Mason, Minnesota	5	0—0	0—0	30
McDonald, Philadelphia	5	0—0	0—0	30
Randle, St. Louis	5	0—0	0—0	30

## LEADING PUNTERS

	No.	Avg.	Long.
Lary, Detroit	24	50.3	73
Davis, San Francisco	30	47.3	64
Green, Chicago	22	47.1	66
Villanueva, Los Angeles	29	46.3	61
Norton, Green Bay	18	45.4	57
Hill, Philadelphia	25	44.6	62
CHANDLER, NEW YORK	23	44.5	64

## PUNT RETURN LEADERS

	No.	Yds.	Avg.	L.R.
Watkins, Detroit	19	325	17.1	90
Keys, Pittsburgh	11	185	16.8	82
James, Washington	7	105	15.0	39
Butler, Minnesota	10	127	12.7	60
Wood, Green Bay	7	88	12.6	41

## KICKOFF RETURN LEADERS

	No.	Yds.	Avg.	L.R.
Brown, Philadelphia	7	266	38.0	100
Woodson, San Francisco	12	445	37.1	103
Adderley, Green Bay	8	297	37.1	98
Reed, Minnesota	8	264	33.0	51
Gros, Green Bay	7	216	30.9	51

## INTERCEPTION LEADERS

	No.	Yds. Ret.	Tds.	Long.
Taylor, Chicago	4	93	0	46
Lynch, New York	4	70	1	47
Thomas, Pittsburgh	4	58	0	31
McRae, Chicago	4	45	1	35
Lane, Detroit	4	37	0	18

# SEASON AFTER SEASON...



"Ahh...  
So Pure!"

She's New York's  
Best Girl!

**White Rock**  
for sparkling fine beverages

The White Rock Girl stays so popular because the brand she represents satisfies so completely! Thanks to *Superior carbonation*, a White Rock drink keeps sparkling from the first pour to the last sip. So for a lighter-livelier drink every time, don't just mix it... *White Rock it!*





# NFL Pairings and Results

HOME TEAM		VISITING TEAM		HOME TEAM		VISITING TEAM	
NEW YORK		VS.	DALLAS	ST. LOUIS		VS.	GREEN BAY
Won 3, Lost 2			Won 1, Lost 4	Won 4, Lost 1			Won 4, Lost 1
37—at Baltimore .....	28	7—St. Louis .....	34	34—at Dallas .....	7	3—Chicago .....	10
0—at Pittsburgh .....	31	24—Cleveland .....	41	28—at Philadelphia .....	24	31—Detroit—at Milw. ....	10
37—at Philadelphia .....	14	17—at Washington .....	21	10—at Pittsburgh .....	23	31—Baltimore .....	20
24—at Washington .....	14	21—at Philadelphia .....	24	56—at Minnesota .....	14	42—Los Angeles .....	10
24—Cleveland .....	35	17—Detroit .....	14	24—Pittsburgh .....	23	37—at Minnesota .....	28
—Dallas .....		—at New York .....		—Green Bay .....		—at St. Louis .....	
—at Cleveland .....		—at Pittsburgh .....		—at Washington .....		—at Baltimore .....	
—at St. Louis .....		—Washington .....		—New York .....		—Pittsburgh—at Milw. ....	
—Philadelphia .....		—San Francisco .....		—Washington .....		—Minnesota .....	
—San Francisco .....		—Philadelphia .....		—at Cleveland .....		—at Chicago .....	
—St. Louis .....		—at Cleveland .....		—at New York .....		—San Francisco—at Milw. ....	
—at Dallas .....		—New York .....		—Cleveland .....		—at Detroit .....	
—Washington .....		—Pittsburgh .....		—Philadelphia .....		—at Los Angeles .....	
—Pittsburgh .....		—at St. Louis .....		—Dallas .....		—at San Francisco .....	
122	122	86	134	152	91	144	78

CLEVELAND		PHILADELPHIA		SAN FRANCISCO		CHICAGO	
Won 5, Lost 0		Won 2, Lost 2, Tied 1		Won 0, Lost 5		Won 5, Lost 0	
37—Washington .....	14	21—Pittsburgh .....	21	20—Minnesota .....	24	10—at Green Bay .....	3
41—at Dallas .....	24	24—St. Louis .....	28	14—Baltimore .....	20	28—at Minnesota .....	7
20—Los Angeles .....	6	14—New York .....	37	14—at Minnesota .....	45	37—at Detroit .....	21
35—Pittsburgh .....	23	24—Dallas .....	21	3—at Detroit .....	26	10—Baltimore .....	3
35—at New York .....	24	37—at Washington .....	24	3—at Baltimore .....	20	52—at Los Angeles .....	14
—Philadelphia .....		—at Cleveland .....		—Chicago .....		—at San Francisco .....	
—New York .....		—at Chicago .....		—at Los Angeles .....		—Philadelphia .....	
—at Philadelphia .....		—Cleveland .....		—Detroit .....		—at Baltimore .....	
—at Pittsburgh .....		—at New York .....		—Dallas .....		—Los Angeles .....	
—St. Louis .....		—at Dallas .....		—at New York .....		—Green Bay .....	
—Dallas .....		—Washington .....		—Green Bay—at Milw. ....		—at Pittsburgh .....	
—at St. Louis .....		—at Pittsburgh .....		—Los Angeles .....		—Minnesota .....	
—at Detroit .....		—at St. Louis .....		—at Chicago .....		—San Francisco .....	
—at Washington .....		—Minnesota .....		—Green Bay .....		—Detroit .....	
168	91	120	131	54	135	137	48

PITTSBURGH		WASHINGTON		DETROIT		BALTIMORE	
Won 2, Lost 2, Tied 1		Won 2, Lost 3		Won 2, Lost 3		Won 2, Lost 3	
21—at Philadelphia .....	21	14—at Cleveland .....	37	23—at Los Angeles .....	2	28—New York .....	37
31—New York .....	0	37—at Los Angeles .....	14	10—Green Bay—at Milw. ....	31	20—at San Francisco .....	14
23—St. Louis .....	10	21—Dallas .....	17	21—Chicago .....	37	20—at Green Bay .....	31
23—at Cleveland .....	35	14—New York .....	37	26—San Francisco .....	3	3—at Chicago .....	10
23—at St. Louis .....	24	24—Philadelphia .....	37	14—at Dallas .....	17	20—San Francisco .....	3
—Washington .....		—at Pittsburgh .....		—Baltimore .....		—Green Bay .....	
—Green Bay—at Milw. ....		—St. Louis .....		—Minnesota .....		—at Detroit .....	
—Cleveland .....		—at Dallas .....		—at San Francisco .....		—Chicago .....	
—at Washington .....		—at St. Louis .....		—at Baltimore .....		—Detroit .....	
—Dallas .....		—Pittsburgh .....		—Los Angeles .....		—at Minnesota .....	
—Chicago .....		—at Philadelphia .....		—at Minnesota .....		—at Los Angeles .....	
—Philadelphia .....		—Baltimore .....		—Green Bay .....		—at Washington .....	
—at Dallas .....		—at New York .....		—Cleveland .....		—Minnesota .....	
—at New York .....		—Cleveland .....		—at Chicago .....		—Los Angeles .....	
121	90	110	129	94	90	91	95

## NATIONAL LEAGUE STANDING

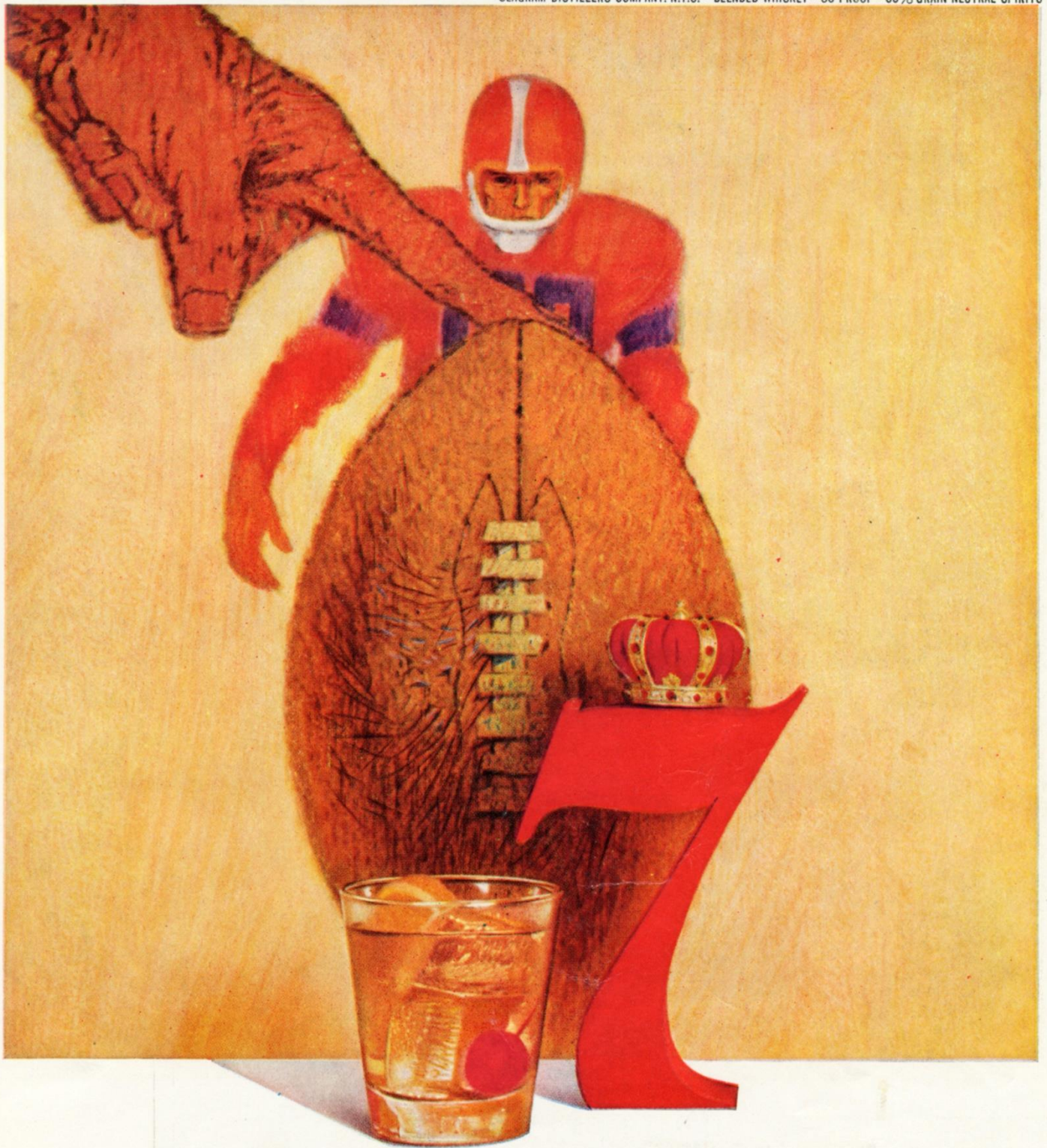
EASTERN CONFERENCE							
	W.	L.	T.	Pct.	Pts.	O.P.	
Cleveland .....	5	0	0	1.000	168	91	
St. Louis .....	4	1	0	.800	152	91	
NEW YORK .....	3	2	0	.600	122	122	
Pittsburgh .....	2	2	1	.500	121	90	
Philadelphia .....	2	2	1	.500	120	131	
Washington .....	2	3	0	.400	110	129	
Dallas .....	1	4	0	.200	86	134	

WESTERN CONFERENCE							
	W.	L.	T.	Pct.	Pts.	O.P.	
Chicago .....	5	0	0	1.000	137	48	
Green Bay .....	4	1	0	.800	144	78	
Baltimore .....	2	3	0	.400	91	95	
Detroit .....	2	3	0	.400	94	90	
Minnesota .....	2	3	0	.400	118	155	
Los Angeles .....	0	5	0	.000	46	174	
San Francisco .....	0	5	0	.000	54	135	

LOS ANGELES		VS.		MINNESOTA	
Won 0, Lost 5				Won 2, Lost 3	
14—Washington .....	37	24—at San Francisco .....	20	7—Chicago .....	28
2—Detroit .....	23	45—San Francisco .....	14	14—St. Louis .....	56
6—at Cleveland .....	20	28—Green Bay .....	37	28—Green Bay .....	37
10—at Green Bay .....	42	—at Los Angeles .....		—at Detroit .....	
14—Chicago .....	52	—Los Angeles .....		—at Green Bay .....	
—Minnesota .....		—Baltimore .....		—at Baltimore .....	
—San Francisco .....		—Detroit .....		—at Chicago .....	
—at Minnesota .....		—at San Francisco .....		—at Baltimore .....	
—at Chicago .....		—at Philadelphia .....		—at Philadelphia .....	
—at Detroit .....					
—Baltimore .....					
—at San Francisco .....					
—Green Bay .....					
—at Baltimore .....					
46	174	118	155		





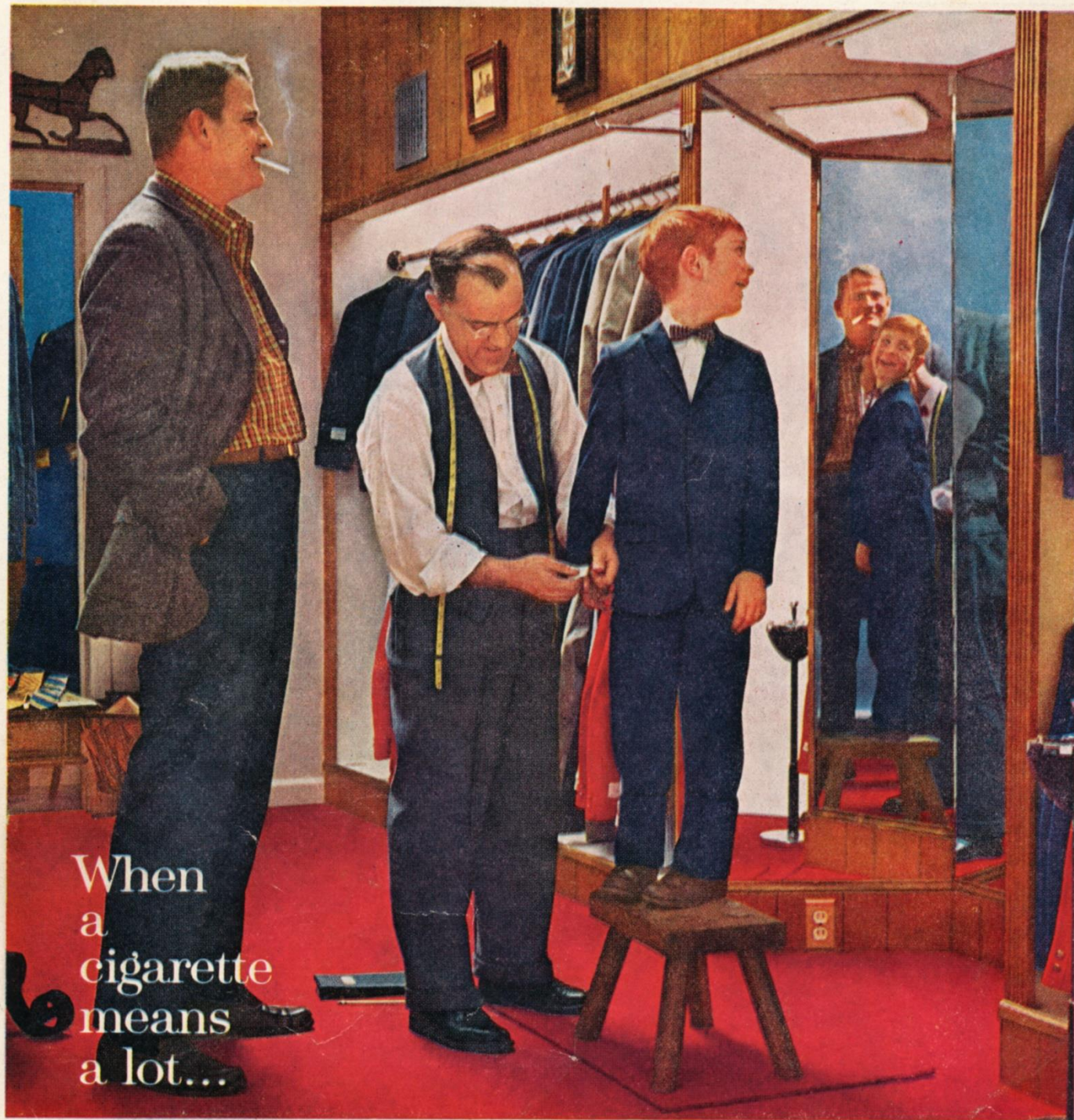
## Play it sure, make it 7



You know a drink will taste right when it's made with 7 Crown, the whiskey that's so good all by itself. Tall drink or short, plain drink or fancy, 7 Crown makes it smooth and memorable as nothing else can. No wonder 7 Crown has so many more fans than any other whiskey ever had.

After the game, **say Seagram's and be Sure**





When  
a  
cigarette  
means  
a lot...

get Lots More from L&M



more body in the blend  
more flavor in the smoke  
more taste through the filter

It's the rich-flavor leaf that does it! L&M has more rich-flavor leaf than even some unfiltered cigarettes. And L&M's filter is the modern filter—all white—inside and outside—so only pure white touches your lips.

*L&M's the filter cigarette for people who really like to smoke.*

