

TWENTY-FIVE CENTS



CHICAGO CARDINALS

POLO GROUNDS . . . OCTOBER 20, 1946



"Boy, That's Tobacco!" Painted from life in the tobacco country by James Chapin.

YES! Lucky Strike Means Fine Tobacco!

**So Round, So Firm, So Fully Packed—
So Free and Easy on the Draw...**





Breathless by Charbert



Perfume that spins a moment into a memory



**DESIGNED
FOR YOUR
PLEASURE**

*Today,
Tomorrow
and Always*



CHEER LEADER... For good cheer,
for good fellowship, for friendliness, Seagram's
7 Crown has proved itself a natural leader. And
no wonder. It's been in training for this particular
position for exactly 89 years!

Say Seagram's and be Sure of Pre-War Quality

Seagram's *Seven* **7** *Crown*

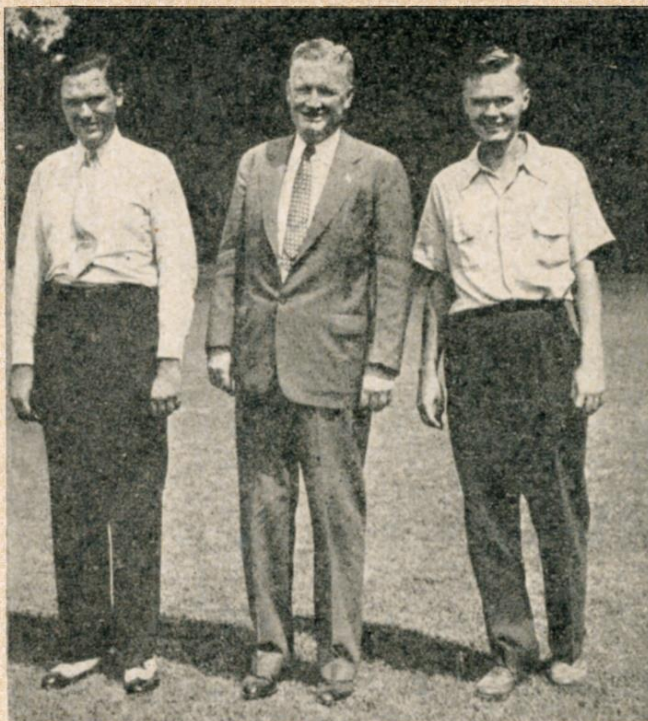
Seagram's 7 Crown Blended Whiskey. 65% Grain Neutral Spirits. 86.8 Proof. Seagram-Distillers_Corporation, Chrysler Building, New York

Welcome Again from the Football Giants



The New York Football Giants welcome you back to the Polo Grounds today as your team opens its twenty-second year in the National Football League.

"Football at its Best" is the slogan of the National Football League and it is the standard on which your New York Football Giants have patterned their 1946 home schedule at the Polo Grounds. Seven home games have been scheduled by the Giants for your enjoyment, bringing to New York the best National League teams, including the big bad Chicago Bears next Sunday, October 27th; the thrilling Philadelphia Eagles on November 10th (remember last year?); the Boston Yanks with Columbia's Paul Governali and Notre Dame's Boley Danciewicz on November 17th; Jock Sutherland and an old style smashing Pitt team on November 24th, and Bob Waterfield and the champion Los Angeles Rams on December 1st. And for December 8th, George



THE MARAS
Jack, Tim and Wellington

Preston Marshall brings to New York the colorful Washington Redskins with brilliant Sammy Baugh.

The Football Giants management extends a special welcome to its ever growing group of loyal season subscribers. We trust that you enjoy your season locations. To our other patrons who like the seats they are in today and who are not already season subscribers, we suggest you write or drop into our office and place these seats in your name as subscribers for 1947.

So another year begins—another series of those enjoyable Sunday afternoons we all have enjoyed so much in the past. In this first year of peace the Giants have once again brought together a strong, resourceful, thrill-packed squad—a squad from which Coach Steve Owen has moulded a real Giant team which it is our hope will bring to you the finest football in America and the 1946 championship of the National League.

We welcome you back, especially our service men, and to you all we express our sincere thanks for your loyal and continued patronage.

The New York Football Giants

GIANTS' HOME SCHEDULE

Today, Oct. 20	Chicago Cardinals
Sunday, Oct. 27	Chicago Bears
Sunday, Nov. 10	Philadelphia Eagles
Sunday, Nov. 17	Boston Yanks
Sunday, Nov. 24	Pittsburgh Steelers
Sunday, Dec. 1	Los Angeles Rams
Sunday, Dec. 8	Washington Redskins

"They suit me
to a T"





TEACHER AND TWO STAR PUPILS

No wonder Coach Steve Owen of the New York Giants smiles. He's holding an informal huddle with his prize rookie All-American tackles. Left to right—Jim White, Notre Dame, 1943; Coach Owen and DeWitt (Tex) Coulter, West Point, 1945.

Introducing Eleven New Giants

ELEVEN new Giants have added much power and resourcefulness to your 1946 New York Football Giants. The 33-player roster is composed of thirteen hold-overs from the 1945 team, eleven first-year players and nine veteran Giants directly back from war service around the world.

Among the newcomers are three stand-outs. They are Frank Filchock, Sammy Baugh's shadow six years with the Washington Redskins, and a pair of former All-America tackles, DeWitt (Tex) Coulter, West Point's 1945 famed performer, and Jim White, Notre Dame's 1943 line ace.

Filchock has added great aerial power to the Polo Grounds club, surprising running talent and natural leadership calling plays. He quickly made good his long ambition to be the No. 1 player on a big pro club. Frankie holds his new mates in high esteem. All the Giants reciprocate that feeling.

Steve Owen was a fortunate coach indeed to come up with two rookie All-American tackles. Coulter and White, big, strong and fast, brought

strength where it was most needed. Unlike most freshmen linemen, Tex and Jim quickly became regulars. Joe Byler, 255-pound, 6:05 rookie tackle from Nebraska, is another promising forward.

Other first-year Giants are backs Cecil Hare, 195-pound, 5:11 ex-Redskin secured from the Packers; Peter Gorgone, 220-pound, 6:00 from Muhlenberg; and Jerry Niles, 195-pounds, 6:02, from Iowa. Ends Don McCafferty, converted Ohio State tackle, and Jack Mead, 210 pounds, 6:02, from Wisconsin. Also guard Bob Dobelstein, 210 pounds, 6:00 from Tennessee, and center Lou Palazzi, 195 pounds, 6:00, from Penn State.

The freshmen crop is exceptionally effective because its strength is so well distributed in places that needed the most reinforcing. The "rookies" also hail from the nation's top-ranking gridiron colleges like West Point, Ohio State, Notre Dame, Wisconsin, Tennessee and Nebraska.

Rogers Peet... A label that spells character.

The Approach to Perfection!

Football belongs largely to speed, brawn, brain and the unending desire to approach perfection, with the goal line as its reward.

Clothes by the modern Rogers Peet also express the approach to perfection.

Indeed, perfection is always uppermost in the mind of Rogers Peet's Master-Designer—perfection in fabric, style, tailoring and fit—perfection in clothes for young men, and men who never grow old.

- With our compliments! Call, phone or write for Rogers Peet's Football Handbook for 1946.

*Rogers Peet
Company*
Makers of Fine Clothes



In New York:
Fifth Avenue
at 41st Street

13th Street
at Broadway

Warren Street
at Broadway

And in Boston:
Tremont St.
at Bromfield St.

NOW! MEDICAL SCIENCE OFFERS

PROOF POSITIVE!

says **Bill Stern**

Favorite Sportscaster of Millions

No other leading cigarette is safer
to smoke! No other gives you

**Less Nicotine
Less Throat Irritants**

than the NEW, Moisturized,
Better Tasting

Raleigh



PLAIN OR TIPPED

UNION MADE

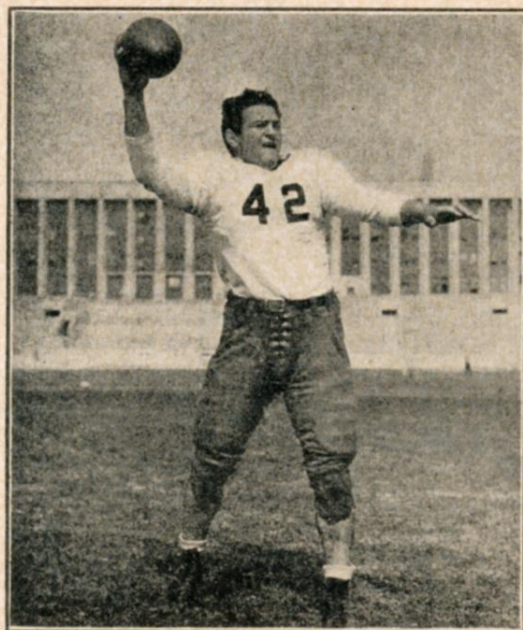
YES! Tests based on a method used by the United States Government—certified by a jury of 14 distinguished doctors, including eminent throat specialists—now offer you *proof positive*: No other leading cigarette gives you *less nicotine, less throat irritants* . . . is actually *safer to smoke*—than the new,

moisturized, better tasting Raleigh! All 6 leading brands were tested!

The New Raleighs are Moisturized to stay fresh longer—Moisturized to taste better—Moisturized to smoke milder! So switch to the New Raleighs today!



The Big Bad Bears Are Next!



SID LUCKMAN



BILL OSMANSKI

THE Monsters of the Midway, better known as the Chicago Bears, will move into the Polo Grounds next Sunday to do battle with the Giants. The Bears are the Big Bad Bears of old now that George Halas has his pre-war stars back in action again. Sid Luckman, Bill and Joe Osmanski, Hugh Gallarneau, George McAfee, Ray McLean, Dante Magnani, Monk Maznicki in the backfield; Ken Kavanagh, George Wilson, George Stydahr, Rudy Mucha, Ray Bray and Bulldog Turner in the line—what an array that is!

One of the few teams in the National League that hold an edge over the Giants in all-time rivalry, the Bears, on their first visit to New York since 1943 when they won 56-7, will be shooting for their nineteenth victory over Steve Owen's squad. The Giants have been able to win only eleven of the thirty contests they have played with the Bears, last beating them in 1939 when they won by a score of 16-13. However it turns out, this is a game that will be played for keeps. Fans with weak hearts are warned to stay away!

SEATS ON SALE NOW FOR GIANT HOME GAMES.

Seats for all the Football Giants' home game are now on sale at the New York Baseball Giants office, 104 West 42nd Street, and the Football Giants office, 11 West 42nd Street. Mail orders are handled only at the Football Giants office.

<i>All reserved seats</i>\$3.00 each	<i>Lower box seats</i>\$4.00 each
(Tax Included)	(Tax Included)

REMAINING GAMES AT POLO GROUNDS

OCT. 27—CHICAGO BEARS	NOV. 24—PITTSBURGH STEELERS
NOV. 10—PHILADELPHIA EAGLES	DEC. 1—LOS ANGELES RAMS
NOV. 17—BOSTON YANKS	DEC. 8—WASHINGTON REDSKINS

Tickets for next Sunday's game with the Chicago Bears are on sale today at the booth in the rear of Section 16 in the Lower Grandstand.

FOR THOSE WHO ARE SATISFIED
WITH NOTHING BUT THE FINEST

GALLAGHER & BURTON'S

White Label



A Luxury Blend
CREATED ESPECIALLY FOR
"The Carriage Trade"



The football matches of yesteryear were played to "the carriage trade." And many a victory toast was poured from a Gallagher & Burton's bottle.

Gallagher & Burton's White Label is a whiskey for "the carriage trade" of today. A luxury blend agreeably smooth and light, yet rich in taste and distinctive in character.



Giants to Watch Today



GEORGE FRANCK represents a possible touchdown every time he gets his hands on the ball. One of the fastest runners in the game, he is a constant threat from scrimmage, returning punts and catching passes.



BILL PASCHAL needs just a glimpse of daylight to be gone. He is at his best on quick openers through the line. Fast off the mark, he fairly flies through a hole and he can cut and dodge with the best of them in the open field.

Filehock, Franck and Paschal Make the Attack Roll



FRANK FILCHOCK has come into his own as one of the great stars of the game since his shift to the Giants from the Redskins brought him out from under the shadow of Sammy Baugh. Noted chiefly as a passer heretofore, he has blossomed out as a ball-carrying star this season and, with 218 yards in three games, stands second among the ground-gainers in the National League.



PROBABLE CHICAGO CARDINALS LINE-UP

STAR

2:3

Left End	Left Tackle	Left Guard	Center	Right Guard	Right Tackle	Right End
DEWELL (41)	SZOT (36)	ARMS (76)	BANONIS (32)	RAMSEY (20)	ZIMMY (15)	IVY (51)
Parker (47)	Foster (64)	Colhauer (55)	Blackburn (57)	Conoly (63)	Bulger (67)	Kutner (80)
Hust (24)	Mauldin (77)	Maddock (49)	Campbell (53)	Apolskis (75)	Kearns (70)	Plasman (16)
Rucinski (19)						

Quarterback
CHRISTMAN (44)
Mallouf (22)

Left Halfback
GOLDBERG (99)
Strausbaugh (48)
Cuff (14)

Right Halfback
ANGSMAN (7)
Johnston (31)
Seno (54)

Fullback
HARDER (34)
Montgomery (43)
Rankin (42)

CHICAGO CARDINALS ROSTER

No.	Player	Position	Weight	Height	Age	College	Years in N.L.
7	Angsman, Elmer	Back	190	5:11	20	Notre Dame	1
14	Cuff, Ward	Back	195	6:01	33	Marquette	10
15	Zimny, Robt.	Tackle	235	6:01	24	Indiana	2
16	Plasman, Dick	End	225	6:03	32	Vanderbilt	6
19	Rucinski, Edward	End	202	6:02	29	Indiana	6
20	Ramsey, Garrard	Guard	210	6:01	26	William & Mary	1
22	Mallouf, Raymond	Back	180	5:11	28	S. M. U.	2
24	Hust, Albert	End	220	6:02	25	Tennessee	1
31	Johnston, James	Back	195	6:02	29	Washington	3
32	Banonis, Vince	Center	230	6:01	25	Detroit	2
34	Harder, Marlin	Back	205	5:11	24	Wisconsin	1
36	Szot, Walter	Tackle	225	6:01	26	Bucknell	1
41	Dewell, William	End	210	6:04	29	S. M. U.	4
42	Rankin, Walter	Back	197	5:11	27	Texas Tech.	4
43	Montgomery, William	Back	205	6:00	23	L. S. U.	1
44	Christman, Paul	Back	210	6:00	28	Missouri	2
47	Parker, Joe	End	215	6:01	25	Texas	1
48	Strausbaugh, James	Back	180	5:09	28	Ohio State	1
49	Maddock, Robt.	Guard	200	6:00	26	Notre Dame	2
51	Ivy, Frank	End	220	6:03	30	Oklahoma	5
53	Campbell, William	Center	203	6:00	26	Oklahoma	2
54	Seno, Frank	Back	190	6:00	25	Geo. Washington	4
55	Colhauer, J. C.	Guard	205	6:00	24	Oklahoma A & M.	1
57	Blackburn, William	Center	225	6:06	23	Rice	1
63	Conoly, William	Guard	227	6:01	25	Texas	1
64	Foster, Ralph	Tackle	230	6:00	29	Oklahoma A. & M.	2
67	Bulger, Chet	Tackle	238	6:03	29	Auburn	5
70	Kearns, Thomas	Tackle	258	6:04	27	Miami	2
75	Apolskis, Raymond	Center-Guard	215	5:10	27	Marquette	4
76	Arms, Lloyd	Guard	215	6:02	26	Oklahoma A. & M.	1
77	Mauldin, Stanley	Tackle	220	6:02	25	Texas	1
80	Kutner, Malcolm	End	197	6:02	25	Texas	1
99	Goldberg, Marshall	Back	190	5:11	28	Pittsburgh	6

Head Coach: James L. Conzelman.

Assistants: Phil Handler, Raymond Parker, Carl Brumbaugh, Richard Plasman.



WHEN THE GOAL

Clear Heads Choose

Calvert Distillers Corporation, New York City. BLENDED WHISKEY 86.8 Proof. Calvert "Reserv

PROBABLE NEW YORK GIANTS LINE-UP

Left End	Left Tackle	Left Guard	Center	Right Guard	Right Tackle	Right End
POOLE (80)	COULTER (79)	DOBELSTEIN (67)	GLADCHUK (51)	YOUNCE (60)	WHITE (77)	HOWELL (81)
McCafferty (87)	Cope (1)	Edwards (66)	De Filippo (55)	Lunday (65)	Ragazzo (71)	Mead (85)
Liebel (88)	Byler (70)	Tuttle (61)	Palazzi (57)		Carroll (90)	Weiss (83)

Quarterback	Left Halfback	Right Halfback	Fullback
GORGONE (25)	FILCHOCK (40)	FRANCK (37)	PASCHAL (38)
Filipowicz (23)	Nix (41)	Doolan (11)	Hapes (30)
Hare (22)	Niles (45)	Livingston (10)	Soar (15)
			Strong (50)

NEW YORK GIANTS ROSTER

No.	Player	Position	Weight	Height	Age	College	Years Giant
1	Cope, Frank (Capt.)	LT	230	6:02	30	Santa Clara	8
10	Livingston, Howie	RH	190	6:01	24	Fullerton J. C.	3
11	Doolan, Jack	RH	195	6:00	26	Georgetown	2
15	Soar, Hank	RH	215	6:00	30	Providence	9
22	Hare, Cecil	FB	195	5:11	27	Gonzaga	1
23	Filipowicz, Steve	QB	200	5:08	26	Fordham	2
25	Gorgone, Peter	QB	220	6:00	25	Muhlenberg	1
30	Hapes, Merle	FB	195	5:11	27	Mississippi	2
37	Franck, George	FB	190	6:00	27	Minnesota	3
38	Paschal, Bill	FB	200	6:00	24	Georgia Tech	4
40	Filchock, Frank	LH	190	5:11	29	Indiana	1
41	Nix, Emery	LH	180	5:11	26	T.C.U.	2
45	Niles, Jerry	LH	195	6:02	26	Iowa	1
50	Strong, Ken	FB	210	6:01	39	New York U.	8
51	Gladchuk, Chester	C	245	6:05	29	Boston College	2
55	DeFillippo, Lou	C	230	6:01	29	Fordham	3
57	Palazzi, Lou	C	195	6:00	25	Penn State	1
60	Younce, Len	LG	210	6:01	29	Oregon State	4
61	Tuttle, Orville	RG	215	5:09	32	Oklahoma City	6
65	Lunday, Ken	LG	220	6:03	32	Arkansas	6
66	Edwards, Bill	RG	215	6:00	25	Baylor	4
67	Dobelstein, Bob	RG	210	6:01	24	U. of Tenn.	1
70	Byler, Joe	RT	255	6:05	23	Nebraska	1
71	Ragazzo, Phil	RT	220	6:02	30	West. Reserve	2
77	White, James	LT	225	6:02	25	Notre Dame	1
79	Coulter, DeWitt	LT	225	6:04	21	West Point	1
80	Poole, Jim	LE	225	6:03	30	Mississippi	6
81	Howell, Jim Lee	RE	215	6:06	30	Arkansas	7
83	Weiss, John	RE	205	6:03	24	H. Snyder H. S.	3
85	Mead, Jack	RE	210	6:03	24	Wisconsin	1
87	McCafferty, Don	LE	220	6:04	25	Ohio State	1
88	Liebel, Frank	RE	220	6:01	27	Norwich	5
90	Carroll, Victor	RT	230	6:04	32	Nevada	4

Head Coach.....Steve Owen, Phillips U.
Assistant Coach...Richard (Red) Smith, Notre Dame
Line Coach.....Bill Owen, Phillips U.
Dentist.....

Backfield Coach.....Mike Palm, Penn State
Trainers.....Gus Mauch, Charley Porter
Physician.....Francis J. Sweeny, M.D.
Arthur C. Croker, D.D.S.

IS ENJOYMENT...

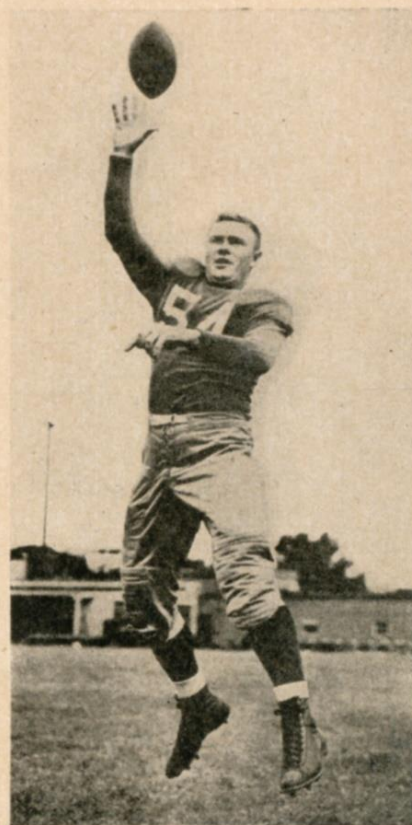
Calvert



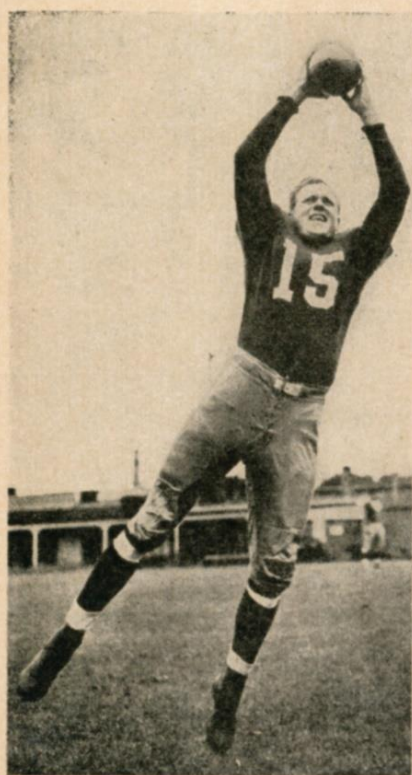
Cardinals in Action



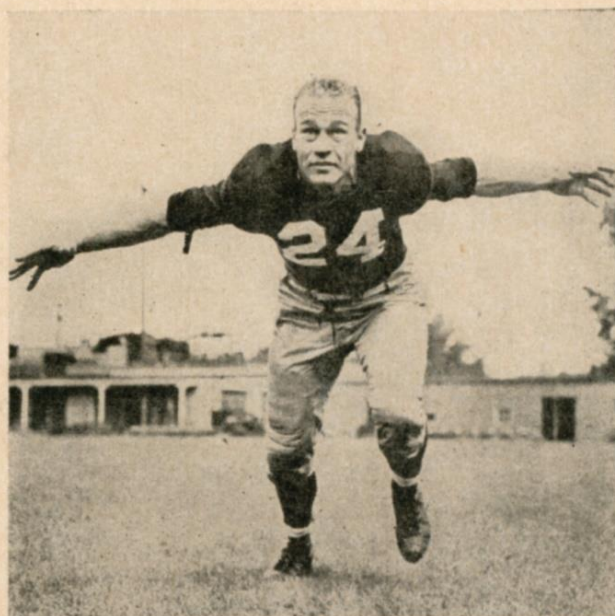
GEORGE SUTCH



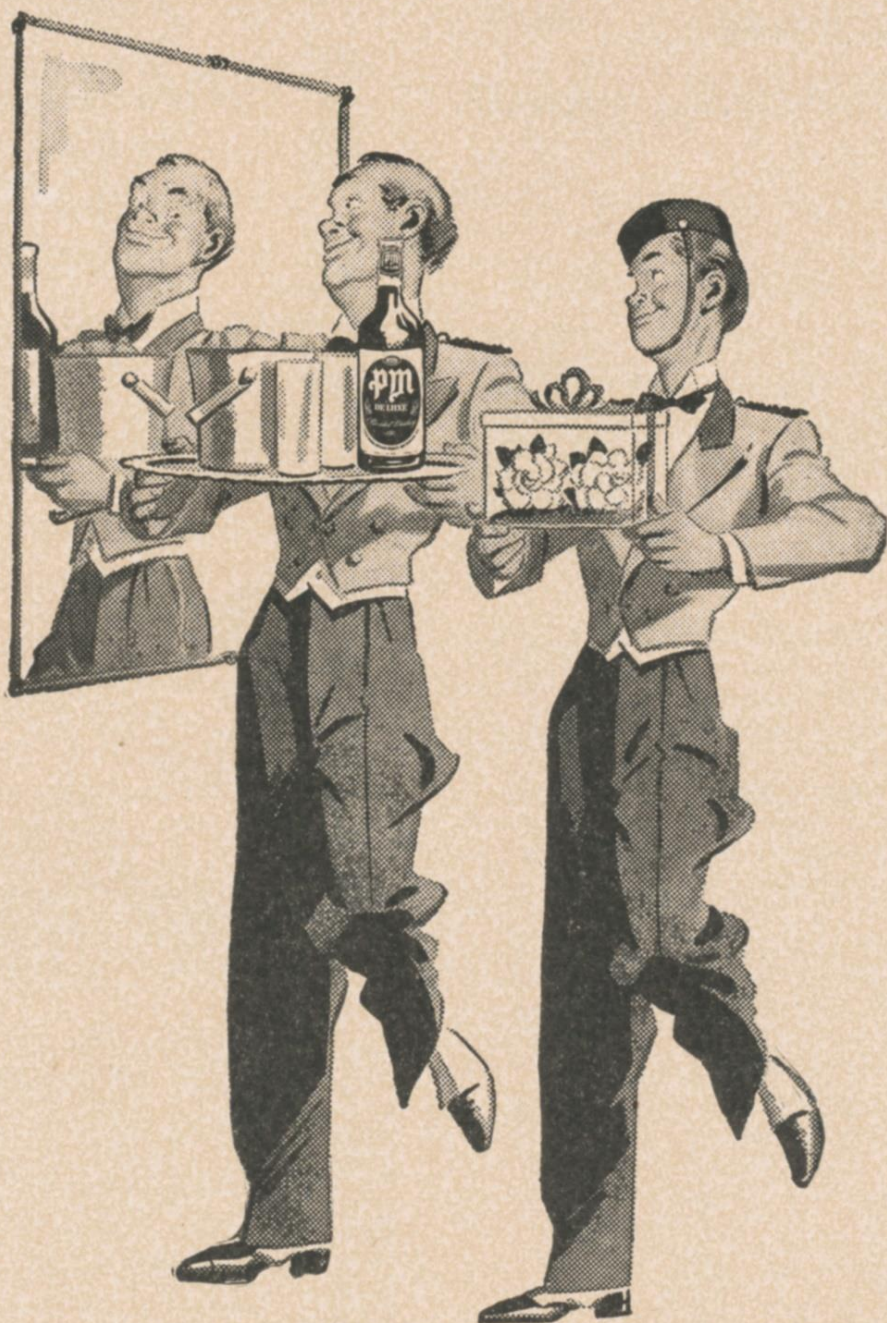
PAUL CHRISTMAN



MAL KUTNER



STAN MAULDIN



*"FOR PLEASANT MOMENTS"—Pass Me PM,
the Perfect Mixer after every game!
Win or lose, the Pleasure's Mutual . . .
Its Polished Mellowness, its supreme good taste
Always call for a celebration.*



IF IT ISN'T

PM

IT ISN'T AN EVENING

National Distillers Products Corp., N. Y. Blended Whiskey. 86.8 Proof. 71% Grain Neutral Spirits.

The light of your life!



Enjoy
a treat...
instead of
a treatment

Official timing watch for the



NEW YORK GIANTS — CHICAGO CARDS FOOTBALL GAME

Longines

The World's Most Honored Watch
winner of 10 world's fair grand prizes,
28 gold medals, and more honors for
accuracy than any other timepiece



Product of Longines-Wittnauer Watch Co.

A Tribute to Ward Cuff

Old Polo Grounds Hero Returns In Uniform of the Cards

By WELLINGTON T. MARA

*Vice President-Secretary
N. Y. Football Giants*

IN his nine years with the club, Ward Cuff was truly a "Giant Among Giants." From the very first he was a regular. He scored more points for the Giants than anyone has ever scored for them. He paved the way for many more with his unselfish blocking. When an important game hung in the balance for want of a field goal or point after touchdown he never failed. He was always the best pass defender and tackler on a team that excelled in defense.

The records tell only part of the story. The players, coaches and trainers of the Giants could tell you more. For they knew and appreciated the great competitive spirit, the sense of team play that made him a player's player. Football is running and blocking and tackling and Cuff ran and blocked and tackled with all he had—and that little bit more.

When he was a 180-pound rookie, Cuff blocked one of the Chicago Bears' 250-pound tackles with such fervor that he deposited him at the feet of George Halas. "You oughtn't to play that rough, sonny," cautioned the



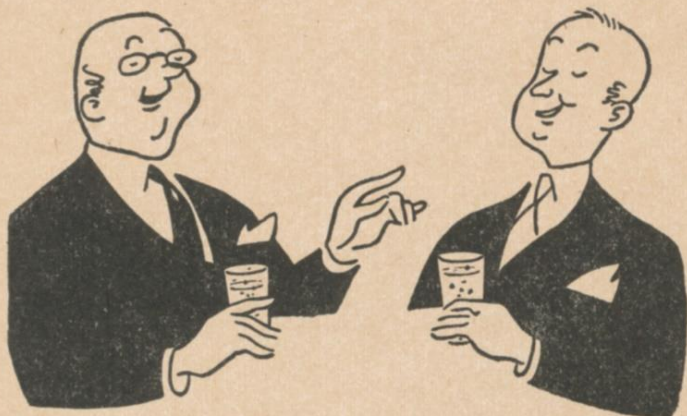
WARD CUFF, rehearsing an old act with a new partner, Quarterback Ray Mallouf holds the ball for his place-kicks now that he is with the Cards.

father Bear. "I guess you're right," grinned Cuff, "One of those little Bears is liable to get hurt."

The Giants miss Cuff. They miss his running and blocking and tackling but most of all they miss him "in the clutch." For when the chips were down he was always there to say "I'll make it, let me try it," when a first down was needed or a field goal would mean the ball game.

This year, when family ties and business interests were such that Cuff couldn't come east, arrangements were made to permit him to play near his Milwaukee home. That explains his presence with the Cardinals today. No one can ever take his place on the Giants nor will anyone ever wear his No. 14 jersey. That number has been retired for all time.

AFTER THE GAME...
ENJOY THE BUBBLE DANCE!



PLEASE DON'T KNOCK ANYBODY DOWN

getting to the exit, but at the nearest grill or night spot there's a little treat in store for you.

It's the bubble dance inside every sparkling drop of... but

DON'T FLIP THIS PAGE... we've another secret to tell you. This titillating treat won't cost you one red cent more than the rather ordinary mixer you might get if you just look meek when you give your order.

SO WHY CHEAT that nice palate of yours out of a good time? Give it a break—let it utter: “—and Canada Dry Water” or “—and Canada Dry Ginger Ale, please.”

Pin-point carbonation, you know.

ON THE WAGON? “The Champagne of Ginger Ales” will make things a lot easier.



Where There's Life There's

CANADA DRY
 WORLD FAMOUS

GINGER ALE—WATER

For quick refreshment right now—call the boy!
 Canada Dry products sold here.

TACKLE
 A COCKTAIL
 at the bar of

Majors
CABIN GRILL

33 WEST 33rd STREET
 between Broadway & Fifth Avenue

GET INTO A HUDDLE
 WITH YOUR FRIENDS
 over our nationally famous
CHARCOAL BROILED STEAKS

"GLORIFYING THE AMERICAN GRILL"

"TRIPLE THREAT" APPEAL

STYLE
 COMFORT
 LONG WEAR

W.L. Douglas Shoes

W.L. DOUGLAS SHOE CO.,
 BROCKTON 15, MASS.

NEW YORK ADDRESSES

New York City: 144 West 42nd St. 2202 Third Ave.
 52 E. Fordham Rd. 1452 Third Ave.

4 stores in Brooklyn—other stores in Jamaica, Yonkers, Jersey City, Union City, Hoboken, Orange, Newark and Paterson.

STORES IN PRINCIPAL CITIES—GOOD DEALERS EVERYWHERE

League Standings

Eastern Division

	W.	L.	T.	Pts.	Opp. Pts.
Washington.....	2	0	1	55	44
New York.....	2	1	0	48	38
Philadelphia.....	2	1	0	81	58
Pittsburgh.....	2	1	1	58	45
Boston.....	0	3	0	32	82

Western Division

Chicago Bears.....	2	0	1	92	52
Los Angeles.....	1	1	1	63	70
Chicago Cardinals.....	2	2	0	94	76
Green Bay.....	1	2	0	43	58
Detroit.....	0	3	0	44	87

Individual Statistics

Leading Ground Gainers

	Atts.	Yards Gained	Long Gain	Ave.
Dudley, Pittsburgh.....	56	236	41	4.2
Filchock, New York.....	34	218	70	6.3
Angsmen, Chi. Cards.....	26	180	43	6.9
Van Buren, Philadelphia.....	28	177	30	6.3
Magnani, Chi. Bears.....	33	166	32	5

Longest gain—84 yards, by T. Harmon, Los Angeles, vs. Chicago Bears, Oct. 13.

Leading Passers

	Atts.	Com.	Int.	Yds. G.	Td. P.	Pct. Com.
Christman, Chi. Cards.....	63	33	4	529	6	.524
Baugh, Washington.....	50	28	4	461	5	.560
Luckman, Chi. Bears.....	63	28	4	543	7	.444
Sherman, Philadelphia.....	19	12	1	182	3	.631
Thompson, Philadelphia.....	19	13	1	172	2	.684
Waterfield, Los Angeles.....	54	27	6	306	2	.500

Longest completion—82 yards, by P. Christman, Chicago Cardinals, vs. Chicago Bears, Oct. 6.

Standing computed on completions, percent completed, touchdown passes, yards gained and percent intercepted.

Leading Pass Receivers

	Received	Yards Gained	Long. Gain	Touch-downs
Benton, Los Angeles.....	14	178	23	1
Ferrante, Philadelphia.....	12	216	48	2
Dewell, Chi. Cardinals.....	10	300	82	4
McLean, Chi. Bears.....	9	221	48	2
Bagarus, Washington.....	9	151	51	2

Longest completion—82 yards, by W. Dewell, Chi. Cardinals, vs. Chicago Bears, Oct. 6.

Leading Scorers

	Td. R.	Td. P.	Tot. Pts.	X.P.	X.P.M.	F.G.	F.G.A.	Tot. Pts.
Fritsch, Green Bay.....	2	1	3	4	0	2	2	28
Cuff, Chi. Cardinals.....	0	1	1	11	1	3	5	26
Dewell, Chi. Cards.....	0	4	4	0	0	0	0	24
Hapes, New York.....	3	0	3	0	0	0	0	18
Harmon, Los Angeles.....	2	1	3	0	0	0	0	18

National Football League Officials for 1946:

Referees

Samuel Weiss.....	2	Thomas Dowd.....	4
William Downes.....	3	Carl Rebele.....	8
Ronald Gibbs.....	5	Rawson Bowen.....	6
Emil Heintz.....	9	Jack Mashin.....	32

Umpires

John Kelly.....	18	Harry Robb.....	15
Carl Brubaker.....	14	Cletus Gardner.....	12
Joseph Crowley.....	11	James Blewett.....	16
Samuel Wilson.....	19		

Field Judges

William McHugh.....	28	Eugene Miller.....	26
Charles Sweeney.....	22	John Fox.....	24
Henry Haines.....	21	Orian Landreth.....	23
William Grimberg.....	27		

Head Linesmen

Samuel Pecoraro.....	37	Yans Wallace.....	34
Daniel Tehan.....	36	Charles Gault.....	39
Lloyd Brazil.....	38	Rawson Bowen.....	6
Charles Berry.....	31	Clarence Savage.....	30



"You know, I never really cared much for the sport until you got rid of your '5 o'clock Shadow'."

Avoid

'5 o'clock Shadow'

with

GEM

Gem Division
American Safety Razor Corp.
Brooklyn 1, N. Y.



The only razor
with the
**SKIN-LEVEL
BEVEL**

Three Cheers FOR THAT SUNNY MORNING FLAVOR!

*You'll stand and cheer each time you savor
this whiskey's Sunny Morning Flavor!*

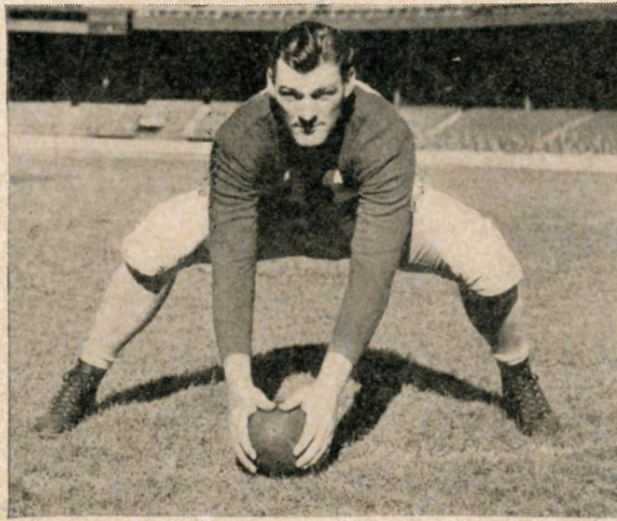


SCHENLEY

RESERVE

Blended Whiskey 86 proof. 65% grain neutral spirits. Copr. 1946, Schenley Distillers Corp., N. Y. C.

Filling A Big Pair of Shoes



CHET GLADCHUK, whose unenviable assignment it is to plug the gap left by the retirement of the great Mel Hein.

"It's up to you to fill Mel Hein's shoes."

That was the toughest order ever given by Steve Owen since he started coaching the New York Football Giants in 1930. It was addressed to Chet Gladchuk last August when the New York club was taking form at its Superior, Wis., training camp. Hein retired last December after fifteen continuous years in which time he set numerous records as the game's all-time No. 1 center and for ironman achievements. When Ole Mel finally bowed out, the Giants were agreed no one would ever match, or even come close, to his tremendous record.

Gladchuk, All-American center on Boston College's outstanding 1940 eleven, isn't the sort to shy at big orders. When Chet received Owen's edict to take over for Hein he quickly got busy with increased enthusiasm. And the towering New Englander is doing a swell job. Giant coaches believe he'll finish the season as the top center in the National League, which is well stocked with star pivots. Especially Bull-

dog Turner of the Bears and Charley Brock of the Packers.

Gladchuk is nearly twenty pounds bigger than was Hein at his peak. He is a more punishing backer-up than was Mel. Chet really likes to rack up opponents until he hears the musical tune of their teeth rattling. Chet also is a consistent accurate passer. And he loves to play football.

After receiving his diploma Gladchuk desired to continue on the gridiron. He was on the Giants' player-draft and joined the club in 1941. Quickly realizing he had little chance to supplant the peerless Hein, Chet asked and received permission to try out at tackle. He made good there. Shortly after the 1941 campaign Gladchuk joined the Navy. He found time to do some football coaching during his Navy stint, which lasted until last spring.

Gladchuk is twenty-nine, 245 pounds, 6 feet, 4 inches. Strangely, his address is 72 Tom Thumb Street, Bridgeport, Conn.

Giants Back to Full Strength



The New York Giants of the National Football League will make their '46 championship bid with a squad that's been immeasurably strengthened over the club's wartime teams. Steve Owen rates his current aggregation of big-name players one of the strongest he ever coached. The added power is well distributed.

Heading the stars are the following All-Americans—George Franck, Minnesota, Merle Hapes, Mississippi, backs DeWitt Coulter, Westpoint, Jim White, Notre Dame, tackles; Chet Gladchuk, Boston College, center. Also these former All-National League choices—Bill Paschal, twice champion ground gainer, Len Younce and Bill Edwards, guards; Frank Cope, tackle; Jim Poole, end.

The acquisition of Frank Filchock from the Washington Redskins gives the Polo Grounders one of their greatest all-time passers. Frank won the circuit's 1944 passing championship. Never before has the New York club mobilized so many swift ball carriers. They are Frank Reagan, Pennsylvania; Dave Brown, Alabama, and Merle Hapes. They are back from war service. Speed-



LEN YOUNCE

sters from the 1945 squad are George Franck, Jack Doolan, Bill Paschal and Howie Livingston.

Two rookie former All-American tackles, Coulter and White, soon earned starting assignments. Veterans Frank Cope and Phil Ragazzo are in support. Joe Byler, 255 and 6:05 freshman from Nebraska, will see plenty of action.

Len Younce and Bill Edwards, returning from service, are first-string guards. Rookies Bob Dobelstein, 210, 6:01, Tennessee, and veterans Kayo Lunday and Orville Tuttle round out the guards. Chet Gladchuk, 245, 6:05, center, is back from service. He is supported by Lou DeFilippo, former Fordham star.

Jim Poole and Jim Lee Howell, returning veterans, are back to man the outposts. Frank Liebel, who caught ten touchdown passes last season, also is back. Owen came up with two promising ends in Jack Mead, fine pass receiver from Wisconsin, and Don McCafferty, former Ohio State tackle, who was quickly converted into a wingman.

In addition to Filchock, the Giants have four other high-class passers. They also have more fine punters than at any other time in the club's history.



FRANK COPE



*New York's
Finest Food*

in the

HUNTING ROOM
•
COLUMBIA ROOM
•
ASTOR BAR

HOTEL ASTOR

TIMES SQUARE
R. K. Christenberry,
President

ESTABLISHED 1853

CORN EXCHANGE BANK TRUST COMPANY

HEAD OFFICE

William and Beaver Streets

New York

o

74 BRANCHES CONVENIENTLY LOCATED IN

GREATER NEW YORK

Member Federal Deposit Insurance Corporation

In New York City it's
ABC

Chesterfield is the big favorite
in the Big Town, outselling
all other cigarettes by far.



**ALWAYS
MILDER**

**BETTER
TASTING**

**COOLER
SMOKING**

ALWAYS BUY CHESTERFIELD

RIGHT COMBINATION ★ WORLD'S BEST TOBACCOS · PROPERLY AGED